

Sweeny--Howard.

D.A.R.Lineage, vol. 72 page 160: Mrs. Kate Mussey Poyd (wife of Douglass Poyd), born in Columbus Ga., joined as #71445 from Brigadier-General Charles Scott (1732-1813) born in Cumberland Co.Va., died in Woodford Co.Ky., who commanded the Va. troops at Trenton & was made Brigadier-General, of Continental Army in 1777, was at Valley Forge, Princeton, & Monmouth, was captured at Charleston & on parole till close of war. (See #66520). She is a daughter of William W. Mussey & wife Charlotte Estes; granddaughter of Henson Scott Estes & wife Martha Gray; great-granddaughter of Joel Dodd Estes & wife Charlotte Scott; great-great-granddaughter of Charles Scott & wife Frances Howard Sweeney.

Book 18 page 570; Nov. 12 1803, John Howard--no wife signs--lets the heirs of deceased Jonathan Biles (they are not named)--all of Rowan Co.N.C.-- have 298 acres on both sides of Deals Creek, beginning on the corner of Daniel Biles at the head of the blackberry patch on the west bank of said creek, going with the line of Daniel Biles, north 35 chains & 40 links to the line of Charles Boiles, east with his line 34 chains & 66 links to a hickory grub on his corner, with his line again north 17 chains & 37 links to a stake on the line of the meadow land of Charles & Thomas Biles, south with their lines 85 degrees west 3 chains to a poplar on their corner, south again 7 chains to Laurel Spring, north with their lines again 84 degrees east 3 chains to a stake on their line, south 52 chains to a stake on the line of the original survey, west with it 17 chains & 18 links to a hickory saplin on the corner of Thomas Biles, north 2 chains to the channel of Laurel Branch, then with its meanders to a poplar on the line of George Monro, north with his line 47 degrees west 20 chains to a post oak on his corner, north with his line again 15 chains to an ash on the south bank of Deals Creek, then up its meanders to the beginning, for 200 pounds witnessed by Peter Brown & Ja Fisher & acknowledged in Nov. 1803. (This had been willed by the deceased Thomas Biles to his son, John Biles).

Book 27 page 734 or 730: Aug. 20 1823, John Howard--no wife signs--lets John Hall--both of Rowan Co. N.C.--have 379 $\frac{1}{2}$ acres on both sides of Deals Creek, beginning 23 poles east of Benjamin Howard, at a stake & a small pine corner, going north from the stake & crossing Poplar Draft at 30 chains, passing the original corner stake at 38 $\frac{1}{2}$ chains (in all 47 chains & 25 links) to a stake on the line of Daniel Biles, west with his line & crossing said Draft again at 9 chains (in all 46 chains & 25 links) to a stake at a dead pine on the corner on the old line of James Kincaid, south with the said line 9 $\frac{1}{2}$ (?) chains crossing a branch to a stake on his corner, west with his line 36 $\frac{1}{2}$ chains to a dead post oak stump (formerly the corner of David Woodson), south with his line 42 chains & 25 links to a post oak on the corner of Benjamin Howard, east with his line 48 $\frac{1}{2}$ chains to a walnut near the lowgrounds of the creek to his corner, north with his line 38 degrees east 4 $\frac{1}{2}$ chains, crossing the creek to an ironwood or horsebeam on his corner, east with his line, passing his corner pine at 26 chains (in all 31 chains & 75 links) to the beginning, for \$1000.00, witnessed by Benjamin Howard & A. Cheshier & acknowledged in May 1824.

Book 33 page 381: A petition filed in Oct. 1835 showing that Benjamin Howard died in 1834 leaving seven children & possessed of seven separate tracts of land of inferior quality which would better be sold & the money divided among them. So it was sold publicly on Dec. 10 1835 at his homeplace. One of the tracts was bought in by one of the petitioners, Alpheus Howard, for \$905.00 & consists of 317 $\frac{1}{4}$ acres on Second Creek next Matthew Howard, Jesse Kincaide, Christian Waggoner, Samuel Owans & James Kincaide, acknowledged by Samuel Silliman (C.M.E.) in Nov. 1837.

Page 383: Another of these tracts was bought in by Isaac A. Hall for \$1125.00, & consists of 191 $\frac{3}{4}$ acres next Mathew Howard, --- Thompson, George Tomason, Bias Tomason, near the public road, Mrs. Kelly & Alpheus Howard.

Page 389: Samuel Craige

Book 38 page 25: Aug. 21 1847, Alphas Howard--no wife signs--lets William Townsley (both of Rowan Co. N.C.) have 57 $\frac{1}{2}$ & ~~200~~ acres next Wiley Kincaid, Christian Waggoner, William Townsley, for \$200.12 $\frac{1}{2}$, witnessed by A. J. Fleming & A. Weant & acknowledged in Feb. 1847.

Equity Minutes 1837-1861 : MAR. 1837, Matthew Howard vs Joseph Blackwell & others. It is ordered that the Clerk be appointed guardian of Maria L., Nancy J. & Margaret Howard (infants of & deceased Benjamin Howard). The decree is that the trust was personal & did cease with the death of said intestate so the complainant must pay Robert A. Craige & wife Mary & Samuel Craige & wife Elizabeth the amount of hire for the slaves since the death of said intestate

Book 29 page 72: On April 9 1824, Jane Triplet of Alexandria, District of Columbia, lets Jacob Crider of Rowan Co.N.C., have her rights in the 620 acres on Second Creek next Thomas Gheen, Thomas Inness, John Allabaugh, John Marlin, Samuel Lewis, John Howard, William Inness, John Fraley, David F. Caldwell & others, (which came to her from the estate of her deceased uncle, Robert Baird who bought it from the heirs of his deceased wife, Rachel Baird)

Book 31 page 252: Oct. 13 1826, Samuel Silliman as Clerk of County (by a decree of April Court 1824 directing him to sell the lands of late Robert Baird of Rowan Co.N.C., for the benefit of his heirs, sold publicly to the highest bidder, Daniel Wood, for \$2500.00, then by another decree of Oct. 1825 directing him to deliver the land) lets Daniel Wood have 714 acres on Second Creek on the great road from Salisbury to Wilkesborough next Samuel Lewis, Philip Rice, John Howard, --- Jones, Isaac Lirely, John Fraley, Thomas Gheen & John Holobaugh, acknowledged in May 1831.

Book 69 page 282: Dec. 9 1882, John H. Howard makes a deed of trust to A.L. Hall (whom he owes \$500.00)--both of Rowan Co.N.C.--for 240 acres on the Wilkesboro road next Rachel Sloan, Andrew Shuping, John Gheen & others, for \$1.00.

Book 18 page 66: May 7 1801, John Howard--no wife signs--let Gideon Howard (both of Rowan Co.N.C.), have 150 acres on the waters of the Yadkin River, beginning on the corner of the whole tract in the line of William Pinkston, going east partly with the old & partly with the new lines, in all 45 chains & 60 links to a small black gum, north 33 chains to a small black oak bush in the old line of John Howard, west with the same 45 chains & 60 links to a post oak on the corner of William Pinkston, then with his line 33 chains to the beginning, for 100 pounds current money
(This is part of a State Grant to the said John Howard).

Gideon Howard

Feb. 6 1798: Administration on the estate of deceased Gideon Howard, as the widow relinquished, is granted to John Howard, who gave bond of 200 pounds, with Thomas Dent & Henry Giles as security.

Wednesday Nov. 5 1800: The sheriff is ordered to bring in the orphan of Gideon Howard (Gideon) who is now in the keeping of John Howard, to court

Feb. 3 1801: Gideon orphan of deceased Gideon Howard, being of lawful age, chose Matthew Howard as his guardian, who gave bond of 150 pounds with Henry Giles as security.

William Howard (Hunting Creek)

Book 11 page 383; Aug. 9th 1787, The State grants (#1599 at 50 shillings the 100 acres) to William Howard 536 acres on Hunting Creek, beginning on the corner of Abraham Branaon at a post oak, going east 8 chains to a stake, north 28 chains chains to the corner of said Howard, east 10 chains to a stake on the said Howards corner, north 56 chains to an ironwood on the corner of said Howard in the line of William Patterson, north with his line 58^{degrees} west 5 chains to a pine on the corner of said Patterson, west 25 chains to a black oak, south 63 chains to a black oak on the corner of John Patterson, then to the beginning.

Thomas Howard

Marriage bond: Thomas Howard to Harriet Gaither Oct. 20 1792? signed by Eli Gaither

Nov. 6 1803: Administration on the estate of Thomas Howard is granted to Harriett Howard & Vetchel James who gave bond of 200 pounds with Beal James. Ordered that Francis Keely, John Little Sr., John Little Jr. & Charles Anderson be commissioners to lay off one years provision for Harriet Howard

William Howard Jr. (Waters of William Giles Mill Branch)
Book 10 page 219: Nov. 4 1784, The State grants (#713 at 50 shillings the 100
acres) to Joshua Whitehead, 150 acres, beginning on the west side of William
Giles Mill Branch, in the fork of the Yadkin River, on the corner of Jessy Buck-
ner at a red oak, going with his line east 46 chains & 50 links to a stake on
the corner of James Harwood, north with his line 2 chains to a black oak on his
corner, east with his line again 18 chains to a red oak on the corner of Ob-
diah Smith, south with his line 30 chains to a black oak on his corner & the
line of Jacob Blewough, west with the same 54 chains & 50 links to a stake,
then to the beginning.

: Deed from Joshua Whitehead & wife to Levi Walter for 150 acres
Nov. 14 1785 proved by Philip Dowell.
Book 10 page 511: Nov. 14 1785, Joshua Whitehead & wife Mary let Levi Walter
all of Rowan Co. N.C., have 150 acres, beginning on the west side of William
Giles Mill Branch, in the forks of the Yadkin, next Jos? Buckner, James Harro-
wood, Obadiah Smith & James Blewough, for 60 pounds, witnessed by Benjamin
Gilpin & Philip Dowell & proved by the latter in Nov. 1786.

Book 11 page 449: Nov. 20 1786, Levi Walter & wife Priscilla let William How-
ard Jr.--all of Rowan Co. N.C.--have 150 acres, as above, for 50 pounds, wit-
nessed by James Pally & Benjamin Gilpin & proved by the latter in May 1788.
May 10 1788: Deed from Levi Walter & wife to John(?) Howard Jr. for 150 acres
Nov. 20 1786 proved by Benjamin Gilpin.

Benjamin Howard (Dutchmans Creek

Book 25 page 694; Sept. 18 1818, Charles Catlett and wife signs--lets Benjamin Howard (both of Rowan Co.N.C.), have 50 acres on Dutchmans Creek next Elizabeth Admire & others, beginning at a post oak & going south 25 chains to a post oak, west 20 chains to a pine, north 25 chains to a post oak, then east to the beginning, for \$100.00, witnessed by John Haden Sr. & John Beard & proved by the latter in Feb. 1820.

Howard

: Ad ministration on the will of Christopher Howard is granted to George & Polly Howard who gave bond of 400 pounds with James Dowell & Jelson Berryman. Ordered that Esq. Jilson Berryman, Jacob March, Norman Ows & John Caters lay off one years provision for the widow & family of Christopher Howard.

Administration on the estate of Henry Howard is granted to George & Polly Howard who gave bond of 400 pounds with James Dowell & Jilson Berryman

Cornelius Howard (waters of Buffelow Creek)

Book 32 page 679: Dec. 16 1793. The State grants (#2258 at 50 shillings the 100 acres) to Cornelius Howard 112 acres on the waters of Buffelow Creek, beginning on the corner of Abraham Sheek in the line of Abraham Welty, going south with it 33 $\frac{1}{2}$ chains to a hickory on the corner of George March, east 30 chains & 34 links to a post oak on the corner of said March, north 9 chains & 84 links to a pine on the corner of Rafort, east 4 chains & 80 links to a stake in the line of said Howard, north with it 23 chains & 66 links to a stake on his corner & in the line of the said Sheek, then west to the beginning.

George Howard

Book 27 page 807: Oct. 11 1822, George Howard of Floyd Co., Kentucky,--no wife signs--lets Thomas Hanline of Rowan Co.N.C., have 56 acres, beginning on the old corner & the line of Henry Howard, at a stake, going south 34 chains to a post oak on the original corner, east 16 $\frac{1}{2}$ chains to a red oak on the old line, north 34 chains to a stone on the line of Henry Howard, then to the beginning, for \$113.00, witnessed by John Phillips & James Spry & proved in Feb. 1824. (This is part of the State Grant to Christopher Howard, who was the father of the said George Howard).

Book 30 page 4: Dec. 20 1827, George Howard--no wife signs--lets David Howard (both of Rowan Co.N.C.), have 227 $\frac{1}{2}$ acres, beginning at a stone at or near the beginning corner of the Grant to Christopher Howard, (of which this is a part,) going south 47 chains & 30 links to a dogwood on the original line, east with the old line & passing the corner to a stone, 47 chains & 90 links, --- 47 chains & 30 links to the line of John Cawl & a hickory on the corner of George Howard, then west with the line of Cawl to the beginning, for \$1500.00, witnessed & proved by John Tomlinson in Feb. 1828.

Christopher Howard
Book 23 page 866; Dec. 8 1815, The State grants (#3082 at 50 shillings the 100 acres), to Christopher Howard, 150 acres beginning on the corner of William Hamby (?), going north 61 chains & 40 links to a stake on the line of Henry Howard, west with his line 12 chains & 25 links to a post oak on the corner of Henry Howard, north 21 chain & 10 links to a stake on the corner of said Christopher Howard, west 9 chains & 7 links to a hickory on the line of the heirs of Aquila Cheshier, south 82 $\frac{1}{2}$ chains to a stake on the line of Hamby, then to the beginning. (This had been entered Jan. 30 1815.)

Henry, Cornelias & Christopher Howard (Henlys Creek & Carters Creek)
Book 9 page 587; Oct. 10 1783, The State grants (#368 at 50 shillings the 100 acres) to Christopher Howard 286 acres on Henleys Creek, beginning at a pine on the line of Joseph Briant, going west 50 chains to a post oak, south 20 chains to a stake, west 20 chains to a stake, south 21 chains to a black oak on the line of Elizabeth Admire, south with her line 80 degrees east 49 chains & 9 links to a nickory on her corner, east 21 chains & 60 links to a nickory, then to the beginning.

Book 21 page 31; June 17 1807, Christopher Howard & wife Rachel let Cornelius Howard of ---, have 286 acres beginning on the line of Joseph Bryan at a pine & going west with the line of Hinkle 50 chains to a stake?, south 20 chains to a stake, west 20 chains to a stake, south 21 chains to a stake on the line of Elizabeth Admire, south with her line 80 degrees east 49 chains & 40 links to a hickory on her corner, east 21 chains & 60 links to a hickory, then north to the beginning, for 50 pounds, witnessed by Mehetable Mumford & George Mumford & proved by the latter in Aug. 1807.

Book 25 page 725:--- -- 1819, Cornelius Howard of Henderson Co., KY.--
--lets Benjamin Howard of Rowan Co.N.C., have 286 acres, beginning on the line of Joseph Bryan at a pine, going west with the line of Hinkles 50 chs. to a post oak, south 20 chains to a stake, west 20 chains to a stake, south 21 chains to a black oak on the line of Elizabeth Admire, south with her line 80 degrees east 49chains & 40 links to a hickory on her corner, east 21 chains & 60 links to a hickory, then north to the beginning, for \$600.00, witnessed by Squire Marsh & William S. Jones & proved by the latter in Feb. 1820. (This is what Christopher Howard & wife let said? Cornelius Howard have on June 17 1807, see book 21 page 31).

Christopher Howard (Carters & Henlines Creeks)

Book 9 page 587: Oct. 10 1783, The State grants (7554 at 50 shillings the 100 acres) to Christopher Howard 300 acres on the waters of Carters & Henlines beginning on or near the line of Joseph Bryant & going south 36 chains to a dogwood on the line of Philip Howard, east with his line & the line of Vinson Williams 18 chains to a hickory on the corner of Williams, south with his line 26 chains to a white oak, east 38 chains to a white oak, north 68 chains to the line of John Johnston, then with his & the line of Joseph Bryant to the beginning.

N.C. Society Colonial Dames of America (1912) page 181: General John Haywood, of North Carolina (1740-1758) Treasurer of the Northern Counties of the Province from 1752-1758. Those joining on his services: Mrs. Owen Haywood Guion & Miss Lida Tunstall Rodman.

Page 106: Miss Lida Tunstall Rodman of Washington, N.C., joined as #336, sixth in descent from Thomas Harvey. Supplementary claims: Benjamin Lakar, James Blount, Lyonell Reading, Thomas Harvey again, Thomas Blount, John Haywood, Sir John Pell & Jacob Blount.

Page 199: Sir John Pell (-----) Second Lord of the Manor. Those joining on his service: Mrs. Owen Haywood Guion & Miss Lida Tunstall Rodman

William Howard (Johnstons Branch waters of Hunting Creek)

Book 12 page 726; April 6 1792, William Howard--no wire signs--lets John Howard (both of Rowan Co.N.C.), have 162 acres on Johnstons Branch waters of Hunting Creek, beginning at a post oak on the corner of Elisha Howard on the line of Stephen Caton, south with his line 58 degrees east 52 chains to a dogwood on his corner on Johnstons Branch, up the various courses of the branch to a dogwood on its east side, south 5 degrees west $7\frac{1}{2}$ chains to a dogwood on the side of an old field, south 60 degrees west 42 chains to a post oak on the line of Stephen Caton, then north with it to the beginning, for 62 pounds & 16 shillings, witnessed by William Summers Jr. & Thomas Prather & proved by the latter in Aug. 1792. (This is part of a State Grant to the said William Howard).

; Deed from William Howard to John Howard for 162 acres April 6 1792 proved by Thomas Prather.

William Howard (Johnstons Branch of Hunting Creek)

Book 12 page 719: May 6 1792, William Howard--no wife signs--lets Elisha Howard (both of Rowan Co.N.C.), have 26 acres on Johnstons Branch waters of Hunting Creek, beginning at a pine on the corner of Stephen Caton, going south 5 chains to a post oak on the corner of John Howard on the line of Stephen Caton, south with his line 58 degrees east 52 chains to a dogwood on the west side of Johnstons Branch to the corner of John Howard, down the various courses of said branch to a white oak on the original line, then with the said line north 58 degrees west 54 chains to the beginning, for 10 pounds & 8 shillings N.C. money, witnessed by William Summers Jr. & Thomas Prather & proved by the latter in Aug. 1792. (This is part of a State Grant to the said William Howard).

: Deed from William Howard to Elisha Howard for 26 acres May 6 1792 proved by Thomas Prather.

Elisha & William Howard (Johnstons Branch of Hunting Creek)

: Deed from William Howard to Elisha Howard for 26 acres May 6 1792 proved by Thomas Prather.

Book 12 page 719: May 6 1792, William Howard--no wife signs--lets Elisha Howard (both of Rowan Co.N.C.) have 26 acres on the west side of Johnstons Branch of Hunting Creek next Stephen Caton & John Howard, for 10 pounds & 8 shillings, witnessed by William Summers Jr. & Thomas Prather & proved by the latter in Aug. 1792. (This is part of a State Grant to said William Howard.) This begins at a pine on the corner of Stephen Caton, goes south 5 chains to a post oak on the corner of John Howard on the line of Stephen Caton, south with his line 58 degrees east 52 chains to a dogwood on the west side of Johnstons Branch to the corner of John Howard, down the various courses of said branch to a white oak on the original line, then with the said line north 58 degrees west 54 chains to the beginning.

Book 24 page 815: Nov. 6 1816, Elisha Howard of Montgomery Co. Maryland--no wife sig lets Abia Hodgson of Rowan Co.N.C., have 37½ acres on Hunting Creek next the said Elisha Howard's, for \$103.00, witnessed by John Prather & William Henaley & proved by the latter in Nov. 1818.

William Howard (Hunting Creek)

Iredell Co.N.C., book A page 219; Oct. 20 1789, William Howard of Rowan Co.N.C.--no wife signs--lets Stephen Caton of Iredell Co.N.C., have 200 acres on Hunting Creek next Edward Jacobs, William Patterson & William Summers, for 80 pounds, witnessed by Zachariah Jacob & Edward G. Jacob & proved by the latter in Dec. 1790.

Book H page 862 in Iredell County N.C.: Sept. 29 1824, Thomas H. Prather--no wife signs--lets Zachariah Gaither (both of Iredell Co.N.C.) have 111 acres on Hunting Creek next Richardson Straud, Will Howard for \$200.00
(This is what William Howard let Stephen Caton have who willed it to James Caton who let Thomas H. Prather have it).

William Howard (West bank of Hunting Creek near Holman's)

Book 11 page 324; Oct. 25 1786, The State grants (#1303 at 50 shillings the 100 acres) to William Howard 166 acres on the west bank of Hunting Creek beginning near Holmans Ford at the corner of Thomas Prather, going south with his line 30 degrees west 42 $\frac{1}{2}$ chains to his corner, in all 48 $\frac{1}{2}$ chains to black oak, west 8 chains to the line of said Howard, north with it 64 $\frac{1}{2}$ chains to a stake on the corner of William Patterson, with the line of said Patterson north 45 degrees east 20 chains to a chestnut on his corner, east with his line 16 chains to a hickory on the creek bank, then with its meanders to the beginning.

Book 12 page 718; June 27 1792, William Howard--no wife signs--lets Thomas Swan (both of Rowan Co.N.C.), have 166 acres on both sides of Hunting Creek, beginning on the south bank of said creek on the corner of Thomas Prather at a white oak, going south with said Prather's line 30 degrees west 38 chains to a black oak on his corner, west with his line to a post oak on his corner & the line of William Howard, north with his line 59 chains to a stake on the corner of said William Howard & William Patterson, north 55 degrees east 12 chains to a chestnut on his corner, with his east line 16 chains to a hickory on the creek bank, then down its meanders to the beginning, for 100 pounds N.C. money, witnessed by William Taylor & Thomas Prather & proved by the latter in Aug. 1792. (The State patented this to the said William Howard Oct. 25 1786).

;Deed from William Howard to Thomas Swan for 166 acres June 27 1792 proved by Thomas Prather.

William Howard (Waters of Hunting Creek)

Book 11 page 337; Oct. 25 1786, The State grants (#1171 at 50 shillings the 100 acres) to William Howard 430 acres on the waters of Hunting Creek, beginning on the corner of William Patterson at a pine, going with his line east $30\frac{1}{2}$ chs. to a stake on said Howard's corner, south with his line 67 chains to a stake, north 39 chains to a white oak, east 10 chains to a hickory, north $47\frac{1}{2}$ chains to a hornbeam saplin on the line of said Patterson, then with it to the beginning.

ROYAL LINES OF GEORGIANS (Atlanta American of last week, I think)

Charlemagne, Roman Emperor 782-814, married Lady Hildegard--Pepin IV., King of Lombardy 800, married Lady Bertha--Bernard, King of Italy, married Lady Cinguard of Laon--Pepin V. Lord of Saint Quentin 840--Herbert I. Count of Vermandois 902, married Princess Anne of France--Herbert II. Count of Vermandois 943, married Lady Hilda, of Anjou--Albert, Count of Vermandois 983, married Princess Gerberger of France--Herbert III. Count of Vermandois 1015, married Ermengarde de Bourgoines--Otto I. Count of Vermandois 1145, married Princess Patia--Herbert IV. Count of Vermandois 1079, married Lady Adelaide, of Valois--Hugh the Great, Count of Vermandois 1120, married Lady Adelaide--Lady Isabel de Vermandois married Robert de Beaumont--Robert de Beaumont, Earl of Leicester (1104-1158) married Amicia de Waer--Robert de Beaumont, Earl of Leicester (1196), married Lady Petronilla--Lady Margaret de Beaumont married Saher de Quincey--Robert de Quincey, a Crusader (died 1218), married Lady Hawyse de Kovelock--Lady Margaret de Quincey married John de Lacie, Earl of Lincoln (died 1240)--Lady Laude de Lacie married Richard de Clare, Earl of Ferford (died 1262)--Lady Rose de Clare married Roger de Lowbray, Lord Lowbray (died 1298)--John de Lowbray, Lord Lowbray (died 1321) married Lady Alini de Braose--John de Lowbray, Lord Lowbray (died 1361) married Lady Joan Plantagenet--John de Lowbray, Baron Lowbray (died 1368) married Lady Elizabeth Segraves--Thomas de Mowbray, Duke of Norfolk (died 1425) married Elizabeth Fitz Alan--Lady Margaret de Mowbray married Sir Robert Howard knight, of Winenhall--John Howard, Duke of Norfolk, K.G. (1485) married Katherine de Loleyns--Thomas Howard, Duke of Norfolk, K.G. (died 1524), married Lady Agnes Tilney--Lady Katherine Howard married Sir Rhys ap Griffith, of Dynevor--William Rhys, of Buckinghamshire, England (born 1522), married Katherine--Thomas Rice, of Buckinghamshire, England (born 1555), married Elizabeth--Edmund Rice (1594-1663), of Sudbury, Mass., married Tamazine Hosmer--Edward Rice (1619-1712) married Agnes Bent (1630-1713)--John Rice (1647-1719) married Tabitha Stone (born 1655)--Moses Rice (1694-1755) married Sarah King--Aaron Rice (1724-1808) married Freedom French (1730-1809)--John Rice (1758-1829) married Ruth Rice (1758-1820)--William Green (1787-1863) married Ruth Rice (1790-1844)--Harvey Green (1812-1863) married Katherine Parker (1814-1880)--George W. Foote (1838-1916) married Ruth Amy Green (1837-1914)--Erna Foote married Elmer R. Kirk--HAZEL KIRK." Arms of Rice & Mowbray families given, also pictures of Charlemagne & Hildegard in royal

Edmond Howard (Now Creek)

Book 13 page 572: March 21 1794, Edmond Howard & wife Elizabeth let John Stinchcomb--all of Rowan Co.N.C.--have 50 acres on & crossing Now Creek next Edmond Howard, for 20 pounds, witnessed by Jesse Adams & John March & proved by the latter in May 1794.

Book 19 page 452; Feb. 3 1806, Edmond Howard--no wife signs--lets William Howard (both of Rowan Co.N.C.), have 50 acres on the east waters of No Creek, beginning on the corner of Haley Tatum at a black oak, going with his line south $9\frac{1}{2}$ poles to a post oak on the corner of Edmond Howard & ---Tatum, west $43\frac{3}{5}$ poles to a hickory bush, north $77\frac{1}{5}$ poles to a post oak, east to the corner of John Stinchcomb, east with his line $11\frac{3}{5}$ poles, south 70 poles with the line of John Buckner to a stake on the corner of said Buckner, then north to the beginning, for 10 pounds N.C. money, witnessed by John Howard & John Stinchcomb & proved by the latter in Feb. 1806.

Book 21 page 503: Oct. 31 1808, William Howard--no wife signs--lets John Stinchcomb (both of Rowan Co.N.C.), have 50 acres on the east waters of No Creek next Haley Tatum, John Stinchcomb & Buckner, for 62 pounds & 10 shillings, witnessed by John Bowan, Elisha Tomson & Haley Tatum & proved by the last named in May 1809.

Edmond Howard (Creek No Creek)

- Book 9 page 514: Oct. 10 1783, The State grants (#489 at 50 shillings the 100 acres) to Edmond Howard 250 acres on Creek No Creek, beginning on the corner of John March at a hickory saplin, going south with his line & that of Elijah Owen 55 chains to a gum, east 45 chains to a post oak, north 55 chains to a post oak on the line of said March, then west with his line to the beginning.

James Arrowood (Waters of Dutchmans Creek)

Book 9 page 666: July 16 1795, The State grants (#2409 at 50 shillings the 100 acres) to James Wallace 113 acres on the waters of Dutchmans Creek, beginning on the corner of Charles Biles at a pine & going north 7 chains & 70 to the corner of ---Coone west 5 chains to a white oak on the corner of Caleb Osborn, south 14 chains & 40 links to a dead pine on the corner of Samuel Barnes, east 78 chains to a formed maple on the corner of said Barnes, south 12 chains & 20 links to a pine on the line of Samuel Barnes, east 10 chains & 15 links to a black Jack on the corner of said Barnes, south 40 chains & 50 links to a pine on the corner of James Arrowood, east 14 chains to a red oak on said Arrowood's corner, north 24 chains to a pine on the line of Elijah Owens, west with his line to a post oak on the corner of said Owen, north 35 chains to a hickory on the corner of Charles Biles & line of said Owen, then west to the beginning.

Monday Feb. 2 1801: Ordered that the constable, John Smith, bring the children of Nancy Arrowood (who are Nicholas Nadson, Jean Nadson, William Arrowood & Charles Busey) to be dealt with &c.

Feb. 6 1801: William Arwood a base born child, age 17 years, is bound to Robert Benson to learn the shoe-makers trade & is to receive a set of tools as expiration of his term Richard Arwood, a base born child age 8 years is bound to Basil Gaither Jr. to learn the trade of a wheelwright

Charles Busey, a poor child age 19 years & 10 mos. is bound to John Smith, a farmer

Mary Arwood a poor child age 9 years is bound to David Marling

Jean Nodson, a poor child, age 16 years, is bound to Benjamin Hodgen

Wednesday May 6 1801: Nicholas Nodson, a poor child aged 13 years, is bound to Thomas Gaither to learn the trade of a hatter.

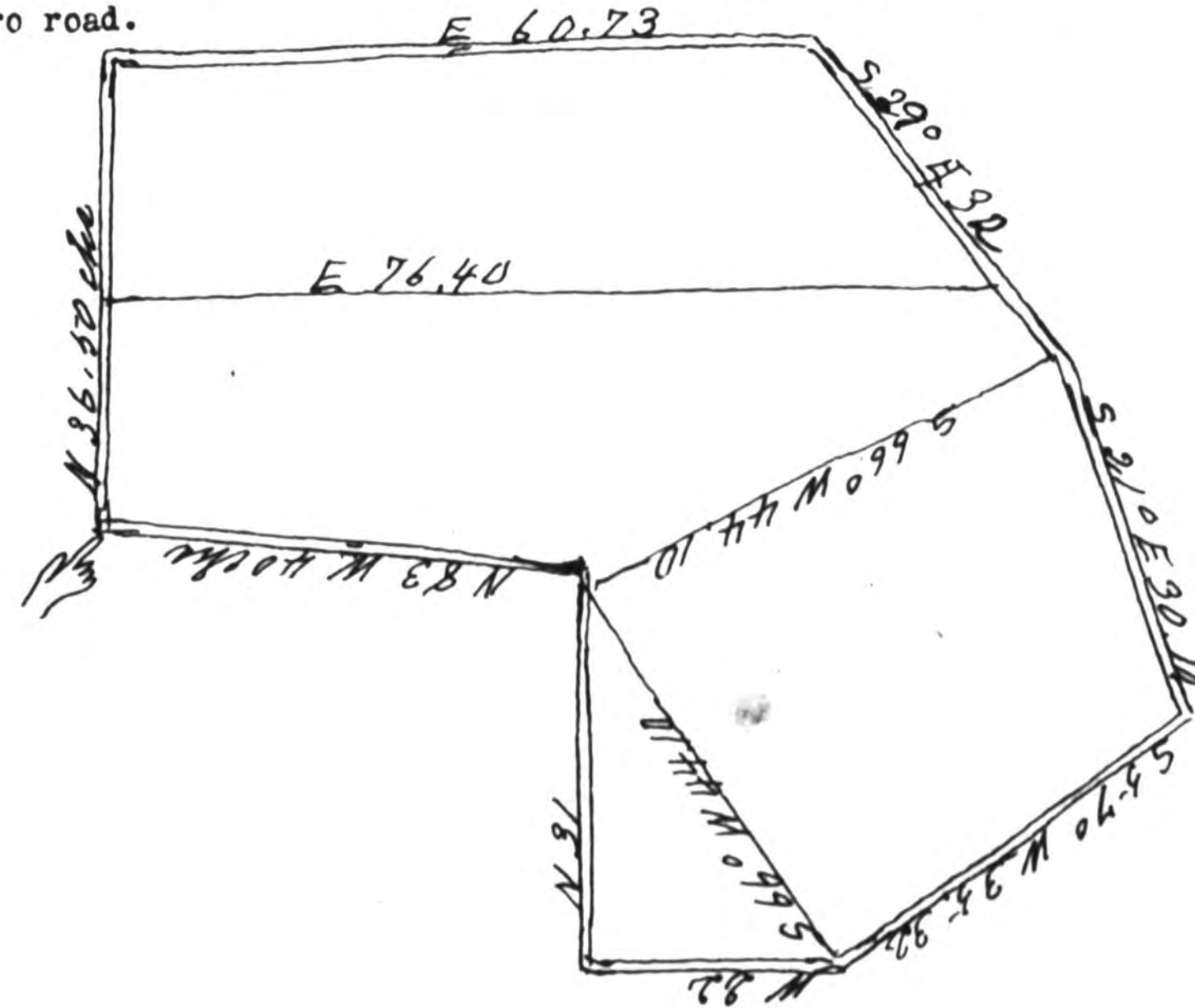
Marruage bonds: Jeny Natson to John Lagel Sept. 21 1807 signed by James Johnes

Matthew Howard's estate.

Division of Estates page 57; June 7 1850, the 432 acres of deceased Matthew Howard is divided, (being next Joseph T. Burris, Nelly Dunn, Burgess Thomason, Mary Hall, Long's road, crossing the Wilkesboro road, Abner S. Elliott) by R. Lowery, M.S. Fraley, John Julian, Joseph T. Burris & Burgess Thomason (Refer to his will) appointed June 6 1850. Lot #1 of 163 1/2 acres is allotted to Thomas Howard being next Abner S. Elliott & Burgess Thomason; valued at \$516.00;

Lot #2 of 135 1/2 acres is allotted to Andrew Howard being next Joseph T. Burris, crossing the Wilkesboro road, next Burgess Thomason; valued at \$366.00 Matthew?

Lot #3 of 133 acres is allotted to Wiley Kincaid next --- Burris & crossing the Wilkesboro road.



Matthew Howard

Census of School District # Aug. 22 1850: Robert N. Craig, age 45 years, born in N.C. a farmer, had \$2,000.00 in real estate.

Mary L.	"	"	34	"	"	"	"
Margaret E.	"	"	5	"	"	"	"
William W.	"	"	4 months	"	"	"	"
Sarah C	"	"	11 years	"	"	"	"
John	"	"	43	"	"	"	"
George	"	"	13	"	"	"	"
Cletus	"	"	5	"	"	"	"

Book 34 page 28: Sept. 28 1838, John Basinger--no wife signs--lets Burgess Thomason have 120 3/10 acres on Deals Creek next Benjamin Howard & Wm. H. Kincaid on the north side of the Ridge-road, for \$400.00, witnessed by Matthew Howard & Wiley Kincaid & proved by the latter in Nov. 1838. (This is part of the Saunders tract)

The will of Mathew Howard (book & page 108) made March 7 1845 & probated in Feb. 1850. Wife: Elizabeth B. (where I live while a widow, then to be equally divided among Willie Kincaid & the sons of Alpheus Howard (Andrew & Thomas). Wiley Kincaid is to keep up the graveyard. The personal estate is to be sold & proceeds divided among Catherine & Any L. (daughters of John Howard), Benjamin (son of A. Howard), Sarah (daughter of Samuel Craige) & Mary (wife of R.N. Craige--he gets nothing). Exr: friend Richard Locke. Witnesses: George Tomason & Burgess Tomason.

Alphaus Howard

Book 37 page 386: June 3 1843, Samuel, Jesse, Wiley, two Thomas Kincaides, James I? Andrew J?, William, Sarah W., Lucinda, Archibald & John Kincaid, Alphius Howard, Chambers Winders Rebecca Childers, Elizabeth Robinson, Sabret S. Trott & James Jones let George E. Gheen have 56 acres next John Hulin, Samuel Kincaid & George E. Gheen, for \$152.00, witnessed & proved by Samuel Elliott in Aug. 1845. (This is their interests in the land of Mary & Elizabeth Kincaid in the estate of their father James Kincaid).

George Howard (of Floyd Co. Ky & ...
Book page 807; Oct. 11. 1822, George Howard of Floyd Co., Ky.--no wife signs--
lets Thomas Hanline of Rowan Co. N.C., have 56 acres, beginning on the old corner
next Henry Howard at a stake, going south 34 chains to a post oak on the origi-
nal corner, east 16 $\frac{1}{2}$ chains to a red oak on the old line, north 34 chains to a
stone on the line of Henry Howard, then to the beginning, for \$113.00, witnessed
by John Phillips & James Spry in Feb. 1824. (This is part of a Grant from the
State to said George's father Christopher Howard.)

John Howard (South side of the Yadkin River)
Book 9 page 389; Oct. 10 1783, The State, grants (#395 at 50 shillings the 100 acres) to John Howard 185 acres on the south side of the Yadkin River, beginning on the corner of Benjamin Howard at a lightwood stake, going south with his line 40 chains to a small white oak on the line of Valentine Beard, east with his line 21 chains & 50 links to a black oak on his corner, south with his line 25 chains to a black oak, east 15 chains & 24 links to a pine, north with his line to a pine on the corner of William Pinkston Turner, west, partly with his line & the line of the said Howard's other tract, 36 chains & 75 links to the beginning.

May 8 1786; Deed from John Howard to John Coughinour for 185 acres March 28 1786? is acknowledged.

Book 10 page 429; March 28 1785, John Howard, a planter--no wife signs--lets John Coughenour (both of Rowan Co. N.C.), have 185 acres on the south side of the Yadkin River, next Benjamin Howard, Valentine Beard, William Pinkston & William Pinkston Turner, (which had been conveyed said Howard by the Secretary's Office), for 120 pounds, witnessed by Ad: Osborn & acknowledged in May 1786.

John Howard Jr. (South bank of the Yadkin River)

Book 9 page 390: Oct. 10 1783, The State grants (#391 at 50 shillings the 100 acres) to John Howard Jr. 382 acres on the south bank of the Yadkin River, beginning on the corner of John Howard Sr., & going west with his line 80 chains & 50 links to a small post oak on the corner of William Pinkston, south 33 chs. to a post oak saplin, east 13 chains to a pine, south 45 degrees east 26 chains & 50 links to the corner of William Pinkston's line & corner pine, south 20 chs. to the line of Benjamin Howard, east 34 chains & 25 links to the line of William Pinkston Turner, north 30 degrees west 22 chains to a pine, north 10 chains & 50 links to a hickory, north 47 degrees & 50 links with said Turner's line to a hickory on his corner on the south bank of the said river, then up its various to the beginning.

Howard (Third Creek)

Book 24 page 741: May 23 1818, John Howard--no wife signs--lets Richard Swan (both of Rowan Co.N.C.) have 146 $\frac{1}{2}$ acres on the south bank of Third Creek next Samuel Steel & his spring-branch, & William Steel, for \$300.00, witnessed by Dan Campbell & John Fraley & acknowledged in Aug. 1818.

Book 29 page 388: March 8 1827, Richard Swann--no wife signs--lets Nathan Neely (both of Rowan Co.N.C.) have 146 $\frac{1}{2}$ acres on south side of Third Creek next what was formerly Samuel Steel & William Steele's corners (formerly property of James Steel), for \$700.00, witnessed by R.N.Fleming & Baker Johnson & proved by the former in May 1827.

Book 31 page 8: April 14 1830, Robert I.Fleming & wife Elizabeth, Alexander Neely, Samuel Luckey & wife Rebecca, Isaac Holman & wife Mary, Alexander Smoot & wife Temperance, out of love for the infant, Elizabeth A.Loury, give her 146 $\frac{1}{2}$ acres (excepting the one seventh of Washington Neely out of it), witnessed by William Barber & James Smith & proved in Aug. 1830. (This land is next Samuel & William Steele, being the land which the now deceased Nathan Neely bought from Richard Swann.)

Howard (Third Creek)

Book 18 page 896; Feb. 11 1804, Robert Steele--no wife signs--lets John Howard (both of Rowan Co. N.C.) have 30 $\frac{1}{2}$ acres on Third Creek, beginning on the third corner of Abel Armstrong; also acres on both sides Third Creek, beginning on Steele's spring-branch & said Steele's mill-dam, thence to John Young's line & Abel Armstrong, including all the land of John Tait which was dammed by Steele's mill-dam, (both of these tracts being subdivided from the tract which Robert Steele Tate let John Tait have who conveyed them to the said Robert Steele); also 9 acres on the south side of Third Creek next ---Young, thence to ---Young & --- Armstrong & said Steele, being all of the land of Abel Armstrong which had been damaged by said Steele's mill-dam (this being land which Abel Armstrong let the said Steele have); also 3 $\frac{1}{2}$ acres on the north side of the said Creek on the east end of John Young's plantation next John Tait, including all of the damaged land of said Young & Steele's mill dam, (being part of the tract willed by Samuel Young to John Young) for 1000 pounds, witnessed by Ls. Beard & Benjamin

Book 22 page 150; May 18 Esq. Benjamin Howard--no wife signs--of Rowan Co. N.C. lets the merchant, Peter Brown of Salisbury N.C., have 60 $\frac{1}{2}$ acres on the east side of Third Creek at the mouth of a small branch on the south bank of said creek, beside the main road next ---Steele, on the north side of said creek near the mill-pond, crossing the said creek having an unknown quantity of land covered by the water, for \$2000.00, witnessed by Daniel Wood & Abner T. Caldwell & acknowledged in May 1811.

Esq. Benjamin Howard (Third Creek & a mill pond).

Book 22 page 150; May 18 1811, Esq. Benjamin Howard of Rowan Co. N.C.--no wife signs--lets the merchant, Peter Brown, of Salisbury, N.C., have 60 $\frac{1}{2}$ acres on both sides of Third Creek, beginning near the mill pond on the southeast side near the mouth of a small branch, at a small pine, going south 55 poles to a stake in the old road, between four hickory pointers, east 42 poles to a black Jack on the west side of the road in the line of ---Steel, north with the line of said Steel 115 poles to a stake on the south bank of said creek, then up its various courses to a poplar just below the sawmill, crossing said creek to a small maple on the north bank of said creek, north 30 $\frac{1}{2}$ degrees west 44 poles to a stone on the corner, north of the stable, north 87 degrees west 24 poles & 13 links to a small hickory, south east 12 poles to a large white oak near the mill pond, up the said creek, or pond, on the edge of the water at its highest overflow in the low grounds, crossing said creek again & going down its various courses on the south side of the edge of the water as before, for \$2000.00, witnessed by Daniel Wood & Abner L. Caldwell & acknowledged in May 1811.

John Howard (Waters of Third Creek)

John Howard (Waters of Third Creek)

Book 20 page 45: May 13 1807, Samuel Rice--no wife signs--of Rowan Co. N.C., lets John Howard of N.C., have 9 acres, 3 rods & 27 poles on the waters of Third Creek, "Bounded on the East by John Howards Milkseat", beginning at a poplar near a spring, & going north 65 degrees east 22 $\frac{3}{10}$ poles to a post oak saplin, north $30\frac{1}{2}$ degrees west 14 $\frac{6}{14}$ poles to a hickory saplin, north 90 degrees west 30 poles to a hickory saplin, south 4 degrees east 60 $\frac{8}{10}$ poles to a hickory, north 78 degrees east 17 $\frac{6}{10}$ poles to a large white oak on the edge of the millpond, north with the mill 20 degrees east 6 poles, north 35 degrees -- 26 poles to the mouth of the spring branch, then with it to the beginning, for 20 pounds current money,

John Howard Robert Sanders (Deals Creek)
Book 16 page 434: Dec. 13 1798, The State grants (#2546 at 50 shillings the 100 acres) to Robert Sanders 217 acres on Deals Creek, beginning on the corner of Thomas Pinkston at a stake, going north 80 degrees east 8 chains & 25 links to a stake in the line of John Lewis Beard, south with his line 58 chains to a pine on his corner, west with Beard's line again 18 chains & 25 links to a post oak saplin on the corner of John Howard, north with the line of John Howard 40 degrees west 62 chains & 25 links to a small hickory on the line of said Thomas Pinkston, then with the same to the beginning. (the warrant is dated May 5 1778).

Benjamin Howard (Deals Creek)

Book 22 page 479 or 579 (numbered twice). Dec. 20 1811, John Howard--no wife signs--lets Benjamin Howard (both of Rowan Co.N.C.), have 344 $\frac{1}{2}$ acres on Deals Creek, beginning on the line of James Sanders at a stone & going north 20 degrees east 40 poles to a pine, north 76 or 707 degrees east 33 poles to the line of ---Biles, north 17 degrees east 38 poles to a walnut, north 30 degrees east 38 poles to a large black oak, south 70 poles to the corner of--Biles on the old line of said Howard, 136 poles to a pine on the original line, north 36 degrees 128 poles to a pine on the original corner, south 216 poles to a black beech in the creek bottom, south 38 degrees west 18 poles to a walnut near the entrance of a branch into the creek, west 194 poles to a post oak on the original line, south with it 134 poles to a pine on the old original corner, east 62 poles to a large poplar near the branch, south with the branch 20 degrees east 102 poles to a beech near the creek, then up another branch east 58 poles to the beginning, for \$1021.50, witnessed by A.Thorn & James Huie & proved by the latter in Aug. 1812.

Elisha Howard (Johnstons Branch of Hunting Creek)

Book 12 page 721; Feb. 21 1791, John Brandon (as executor of deceased William Patterson & agreeable to his will that it be sold), lets Elisha Howard (both of Rowan Co.N.C.) have 150 acres on the south side of Hunting Creek, beginning on the west side of Johnstons Branch on the original line at a small black oak, going west with the out line of said tract 29 chains to a post oak, north 32 chains to a black oak on the line of James Taylor, west 22 chains & 50 links to a pine, south 22 chains to a pine, south 50 degrees east 66 chains to a Spanish oak on the line of William Howard, then north 34 chains to the beginning, being part of a State Grant to the said deceased, for 46 pounds N.C. money, witnessed by Samuel Ellis, John Howard & Thomas Prather & proved by the last named in Aug. 1792.

John Howard (Irish Second Creek
Book 18 page 16; Feb. 6 1801, John Cross of Buncombe Co. N.C.--no wife signs--
lets John Howard of Rowan Co. N.C., have 300 acres on Irish Second Creek, begin-
ning on the corner of David Craig & the line of Thomas Frohock, going west 4
chains to his corner & two willow oaks on the line of Moses Linster, south with
the same 22 chains to a green ash on his corner on the north bank of the creek,
west 80 chains & 50 links, crossing the creek six times, to a hickory on the
east side of a pond, south 5 chains & 50 links to a Spanish oak on the corner
of John Paterson, with Paterson's line in all 42 chains to a hickory on the
corner of Charles Biles, east with his line 45 chains to a hickory grub, north
Biles, 48 chains to a stake on the line of David Craig, north with his line 12
degrees west 43 chains to the beginning, for 300 pounds current money, witness-
ed by Ls. Beard & Peter Brown & acknowledged in Feb. 1801. (This had originally
been granted Martin Beefe).

Book 28 page 285; Nov. 22 1825, Esq. Benjamin Howard (as executor of deceased
John Howard), let William Heathman--both of Rowan Co. N.C.--have 300 acres on
Irish Second Creek, beginning on the corner of David Craige on the line of Tho-
mas Frohock at a small persimmon, going west 4 chains to his corner at two wil-
low oaks on the line of Moses Linster, south with the same 22 chains to his cor-
ner at a green ash on the north bank of the creek, west 80 chains & 50 links,
crossing the creek six times, to a hickory on the east side of a pond, south 5
chains & 50 links to a Spanish oak on the corner of John Patterson, ---with the
line of Patterson 42 chains to a hickory on the corner of Charles Biles, east
with his line 45 chains to a hickory grub, north with his line 20 chains to a
black gum, east partly with the line of Charles Biles & partly with Joseph Biles
48 chains to a stake on the line of David Craige, north with his line 12 degrees
west 43 chains to the beginning, for \$500.00, witnessed by J.W. Walton & W. Howard
& acknowledged in Nov. court of 1825. (This had originally been granted to Mar-
tin Beefe).

Book 13 page 455; Nov. 27 1792, The State grants (#2232 at 10 pounds the 100
acres) to Martin Beefe 300 acres on both sides of Irish Second Creek next Da-
vid Craige, Thomas Frohock, Moses Linster, John Patterson, Charles Biles & Jo-
eph Biles on the east side of a pond.

John Howard (Waters of Grants Creek)

Book 2 page 375: Oct. 10 1783, The State grants (#386 at 50 shillings the 100 acres) to Martin Beffle 600 acres on the waters of Grants Creek, beginning on the corner of Valentine Beard at a pine, going south 73 chains to a hickory grub on the line of ---Phifer, west with his line 36 chains & 50 links to a black oak near the corner hickory of John Lewis Beard, north with his line 46 chains to a stake on his corner, west 28 chains & 25 links to a post oak on his corner, north 59 chains to a black oak, east 80 chains to a black oak, south 29 chains & 75 links to a dead pine on the line of Valentine Beard, then west to the beginning.

William Howard (Carters Creek & Bedford Co. Tenn.)

Book 25 page 295: April 19 1819, William Howard of Bedford Co. Tenn. & his wife signs--lets Henry Howard of Rowan Co. N.C.--have 46 $\frac{1}{2}$ acres on the waters of Carters Creek, beginning at a black oak & going west 9 chains & 50 links to a stone in the edge of an old field, north 11 chains & 62 $\frac{1}{2}$ links to a stone in the old field, west 15 chains & 12 $\frac{1}{2}$ links to a hickory, north 14 chains & 85 links to a hickory grub, east 24 chains & 22 links to the line of the said Henry Howard on the edge of an old road, then south with his line & passing his corner, to the beginning, for \$100.00, witnessed by B. Berryman & Samuel Jones & proved by the latter in May 1819

Henry Howard (Carters Creek waters)

Book 25 page 297; April 4 1819, Henry Howard--no wife signs--lets George Howard (both of Rowan Co. N.C.,) have 255 acres on the waters of Carters Creek, beginning at a post oak, going east 60 chains & 50 links to a pine stump on the line of Henry Faw, northwith his line 27 chains & 50 links to a white oak on the corner of said Faw, south 85 degrees west 7 chains & 70 links with his line to a white oak on said Faw's corner, north with said Faw's line 16 chains & 35 links to a stone on the corner of said Faw & the line of John Spry, west with the line of said Spry 25 chains & 75 links to a black oak on the corner of said Spry, south 4 chains to a hickory saplin on the corner of said Spry, north 75 degrees west 13 chains & 25 links to the corner of said Spry & the line of ---Armsworthy, south with his line 1 chain to a stone on his corner, west with the line of Armsworthy, passing his corner to the line of Daniel Call 9 chains to a hickory saplin, south 26 chains & 70 links to a stone on the edge of the old field, east 9 chains & 50 links to a black oak, then north to the beginning, for \$1000.00, witnessed by B. Berryman & Samuel Jones & proved by the latter in May 1819

89°

with Samuel Jones & proved by the latter in May 1819

Howard. (Deals Creek)

Book 14 page 71: Nov. 27 1793, The State grants (#2192 at 50 shillings the 100 acres) to John Howard 638 acres on both sides Deals Creek 'known by the name of the long dispute' next the land formerly surveyed for Albertus Spring, Thomas Giles, James Kincaid, David Woodson, John Howard, Robert Sanders, Eleazer Cummings & John Lewis Beard. It begins on the line of a tract formerly surveyed for Albertus Spring & goes north with the same 26 chains to a stake on his corner, east 22 chains & 50 links to a forked pine on line of Thomas Bilas; north with his line 8 chains & 75 links to a white oak, west 2 chains & 25 links to a stake in the line of James Kincaid, south with his line 7 chains & 50 links to a stone on his corner, with the same again west 35 chains & 50 links to a post oak on the corner of David Woodson, with it south 74 chains to a pine in the line of John Howard, with his line east 15 chains & 50 links to a poplar, south 40 degrees east 1 chain & 75 links to a hickory grub on the corner of Robert Sanders, with the said Sander's line 80 degrees east 51 chains to a stake in the conditional line of Ebenezer Cummings, with the same north 17 degrees east 11 chains & 50 links to a hickory, with the same north 30 degrees east 9 chains & 50 links to a small black oak in the line of John Lewis Beard, north with his line 9 chains & 5 links to his corner post oak, then east again 5 chains to a stake on the corner of aforesaid Spring's line to the beginning.

Book 5 page 138; Aug. 27 1762, Earl Granville lets John Howard of ---, have 560 acres on the west side of the South Yadkin & both sides of Deals Creek, beginning on the bank of the Main Yadkin at a black oak & going west 85 chains to a pine, north 80 chains to a post, east 55 chains to the South Yadkin then down the South Yadkin to the beginning, for 10 shillings, with a yearly rental of 1 pound 2 shillings & 5 pence (at the rate of 3 shillings sterling the 100 acres), witnessed

(over)

John Howard (Deals Creek)

Book 7 page 19: July 9 1768, John Howard--no wife signs--lets Catharine Howard Sr., Gideon Howard, John Howard & Benjamin Howard (who now occupy this)--all of Rowan Co.N.C., have 160 acres on the west side of the Yadkin River & on both sides Deals Creek, beginning on the bank of the main river at a black oak & going west 45 chains to a pine, north 80 chains to a post, east 15 chains to the South Yadkin, then down the South Yadkin to the beginning, for 100 pounds current money of N.C., witnessed by Jason Frissell & W.Pinkstone & recorded in Oct. 1768.

Book 19 page 601: Dec.5 1805, John Pinkston--no wife signs--lets John Howard (both of Rowan Co.N.C.) have 320 acres on both sides Deals Creek next --- McClane, Hugh McNary, a branch & the conditional line, for 300 pounds, witnessed by John Pinkston Jr. & Benjamin Howard & proved by the latter in Feb. 1806.

1. James Fenner, born July 9, 1843, married June 28, 1866, Mary Cornelia Carroll, nee Read, born Dec. 25, 1839 & had:

1. Mary Cornelia, born July 8 1867 died Nov. 1875.
2. Arthur Fenner, born June 28, 1869 died Feb. 3 1892.
3. Sarah Fenner, born Dec. 17 1870, married John H. Walker.
4. James Fenner, born June 9, 1872 married William Waltham.
5. Emily Fenner, born Feb. 1874 died Feb. 1876.
6. Sophia Howard, born Jan. 21, 1876, married Nov. 22 1897, James Briscoe Jr. (son of James Briscoe by Anne Sedgewick Humpman) of "Sotterley", St. Mary's Co., Md., & had 1. Cornelia Lee, 2. Arthur Fenner Lee Briscoe.

Founders of Anne Arundel & Howard Counties Maryland (by Warfield) page 240: Joshua Howard, of Manchester, England, was an officer in the army of the Duke of York during the Monmouth Rebellion, came to Maryland about 1685, with his wife, Joanna O'Carroll, of Ireland, & took up a tract of land near Pikesville, Baltimore County. His son, Cornelius Howard married Ruth, the daughter of John Eager by Jemima (Murray), and had Gov. John Eager Howard, a soldier & the fifth Governor of Maryland, born June 4, 1752, died in 1827, shortly after the death of his wife, who was Peggy Chew, by whom he had John H. Howard (the eldest son) who married Annabella Read, General Benjamin Chew (who married Jane Grant Gilmore), the second son of William ^{George} ~~George~~ ^{George} Prudence Gough Ridgely & became Governor, ~~his second wife was~~ ^{his second wife was} married Prudence Ridgely Charles married Elizabeth Key, while the daughters became Mrs. John McHenry & Mrs. William George Read. (Note this in the dark v. James Colonial Families of the United States, Vol. II page 389: James Howard, son of Col. John Eager Howard by Margaret (Chew), married in 1832, Catherine Mary, the daughter of William Ross of Frederick, Md. (son of Major William Ross, born in Ross-shire

John Eager Howard of Maryland.

Colonial Families of the United States (by McKenzie) Vol. II page 435: Julian Henry Lee of Baltimore, Md., born Nov. 2 1845, married there at "Ruscombe" June 3 1873 to Elizabeth Dawson Tyson (daughter of James Wood Tyson by Elizabeth Williams Dawson, Jr.), gave his lineage (he is secretary of the Society of Colonial Wars & of the Maryland Historical Society), as follows:

Sir Robert Lee, born at Bridge North, Shropshire, England, Lord Mayor of London in 1602, died Jan. 28, 1605. He had:

Henry Lee, one of the Captains of the City of London, He had:

Francis Lee, of Bridgetown, Barbadoes, is said to have been the son as above, married Mary----. He had:

Thomas Lee, born at Bridgetown, Barbadoes, Feb. 6 1710, died Aug. 8, 1769, married at Charleston, S.C., May 26, 1732, Mary Giles, who died April 1, 1751. He had:

I. Francis, born Jan. 16 1734, died Nov. 29 1767.

II. Mary, born Jan. 7 1738, married Joshua Lockwood

III. Susannah, born Oct. 2 1740, died Dec. 20 1760, married April 19 1759

IV. ~~Jessiah~~ Pinkney.

IV. Joseph born Nov. 11, 1742 died Nov. 15 1814, married 1st Agnes Harper, married 2nd, June 29, 1764, Mary Hay Thorne, born April 1740, died 1784.

V. Rebecca, born March 10, 1743 died in infancy.

VI. Hannah, " July 17, 1745, " " "

VII. Col. William of Charleston, S.C., born June 24 1747 died Nov. 29, 1803, married Ann Thens, born Aug. 4 1750, died Aug. 5 1797.

VIII. Rachel.

IX. SERPENT, born Jan. 21, 1750 at Charleston, S.C., died Nov. 7 1807. He was held as a hostage by the British during the Revolutionary War, on board the schooner, "Pack Horse," in Charleston Harbor, S.C., married 1784, Dorothea Alison, nee (OVER)

John Roger Howard of Maryland.

III Hillyard Cameron born Dec. 18 1854.

- IV. Amabel, born June 14, 1858, died March 1 1895, married Dec. 18 1879, John Cowman George. By whom had 1. Stephen Lee George born Aug. 26 1882, married Lillian Kelley.
2. Amabel Lee George, born July 27, 1885, married Heyward E. Boyce
3. Henrietta G. George, born Dec. 5 1887, married Dr. Marshall L. Price.
4. Sarah Fenner George, born Nov. 11, 1889.

Arms: Argent, a fesse sable, in chief three pellers, in base a martlet of the second.
Crest: A talbot's head, erased.

Sons of American Revolution, page 934; James Fenner Mallett of Milo, Ill., joined the Rhode Island society as #6820, son of Edward F. Mallett by Sarah F. (Fenner), grandson of James Fenner by Sarah (Jenckes), great-grandson of Arthur Fenner, Member of Rhode Island General Assembly, grandson of Peter Mallett, Commissary of the Fifth North Carolina Regiment.

Page 443; Arthur Fenner Lee, died Jan. 10 1892, joined the Maryland Society as #1097 son of James Fenner Lee by Mary Cornelia (Read); grandson of William George Read by Sophia Catherine (Howard) & of Stephen States Lee by Sarah Fenner (Mallett); great-grandson of John Roger Howard, Lieutenant-Colonel of the Second Battalion of Maryland Flying Camp, & of Jacob Read, Major of the South Carolina Militia, a prisoner, & Delegate to Continental Congress, & of Edward J. Mallett & Sarah (Fenner); great-great-grandson of Arthur Fenner, Captain of Jinnett's Second Rhode Island Regiment, & of Peter Mallett, Commissary of North Carolina Militia & of James Fenner by Sarah (Jenks).

Smiser, widow of Rev. Hugh Allison. They had:

- I. PAUL S.H. born Sept. 22 1784--see below.
 - II. Francis Joseph who married May 1 1812, Ann Beekman
 - III. Maria.
 - IV. Carolina who married Joshua Lockwood
 - V. Joseph.
 - VI. Wm. States, M.D., of Edisto Island, S.C., born July 22 1793, married 1st I.C. Villepontaux, married 2nd Henrietta Gaillard.
- Paul S.H. Lee, born Sept. 22 1784, died April 20 1852, married Jan. 10 1809 at Charleston, S.C., Jane Elizabeth Martin (daughter of Jacob & Rebecca (Hurray) Martin, married 2nd Lynch Van Rybare. By first marriage had: I. Eliza.
II. J. Martin married Rebecca Fishburne.
III. STEPHEN STATES, born Nov. 8 1812 (see below)
IV. Theodore married Julia Reynolds.
V. Francis A. Issue by second marriage:
I. Hutson
II. I. Allison
III. P. Van Rhyme.

Stephen States Lee, born Nov. 8 1812 died Aug. 22 1892, married April 30, 1840, at Providence, R.I., Sarah Fenner Mallett, b. Aug. 14, 1821, (daughter of Gen. Edward Jones Mallett, born in Fayetteville, N.C., May 1, 1797, died Aug. 20, 1883, married Sept. 11, 1820, Sarah Fenner, born May 13, 1797, died May 17, 1841). They had:

- I. James Fenner, born July 9, 1843, married June 28, 1866, Mary Cornelia Carroll, nee Read, born Dec. 25 1839 (See next page)
- II. JULIAN HENRY (subject of this memoir)
- III

Book 22 page 82: March 25 1811, Joseph Hinkle of Rowan Co. N.C.--no wife signs-- lets Nathaniel Chaffin of Surry Co. N.C., have 296 acres on the south bank of the Yadkin River, where it begins, at a white oak, on the corner of William Phillips, going south with his line 30 degrees west 21 chains to a white oak, west 17 chains to a stake, north 2 chains & 50 links to a stake, west 52 chains to the original corner in a mill-pond, north 44 chains to a dead hickory near a marked white oak for a corner, on a road, east 42 chains to a Spanish oak on the river bank, then down its meanders to the beginning, for \$2100.00, witnessed by --- Neal---, Joseph Chaffin & proved in May court of 1811. (This is where Joseph Hinkle lived, being conveyed to him on April 18 1808 by Samuel Bryant, & it is also where Samuel Bryant Sr. lived, but he is now deceased).

John Howard (Second Creek)

Book 20 page 377: April 15 1809, George Smith--no wife signs--lets Moses Thompson Jr. & his son Squire Thompson (all of Rowan Co. N.C.) have 215 acres next Andrew Ferguson, Jacob Link & Richard Robison, for \$280.00 witnessed by James Hart, whose signature is proven by Thomas Galloway & James Gay in Feb. 1814.
Nov. 5 1806; "Squire Thompson Natural Son of Moses Thompson Junr". came into Court and chose Moses Thompson who gave bond with --- in ---"

Nov. 7 1806; Thomas Pinkston, guardian of Squire Thompson, gave bond of 200 pounds with Adam Shrote

Book 20 page 511; Dec. 18 1811, Squire Thompson of Blunt Co. Tenn.--no wife signs--lets John Howard of Rowan Co. N.C., have 101 acres & 2 chson Second Creek on the southeast corner of the tract, for 75 pounds, witnessed by Nancy Howard & A. Thorn & proven by the latter in Feb. 1816.

Book 20 page 501; Nov. 19 1814, John Howard--no wife signs--lets Thomas Pinkston (both of Rowan Co. N.C.) have 101 acres & 2 chains on Second Creek next Thomas Gheen & Hugh Ferguson, for \$175.00, witnessed by Townshent Dent & George Dunn & acknowledged in Feb. 1816. (This is part of the land formerly owned by the now deceased Andrew Ferguson.)