



1956

L-Book



H. WILLIAMS







Presenting The 1956 L-Book



Gary Gast

Maurice Katzman

Gerald Brines

David Galbraith

Editor-in-Chief

Business Manager

Associate Editor

Candid Photographer

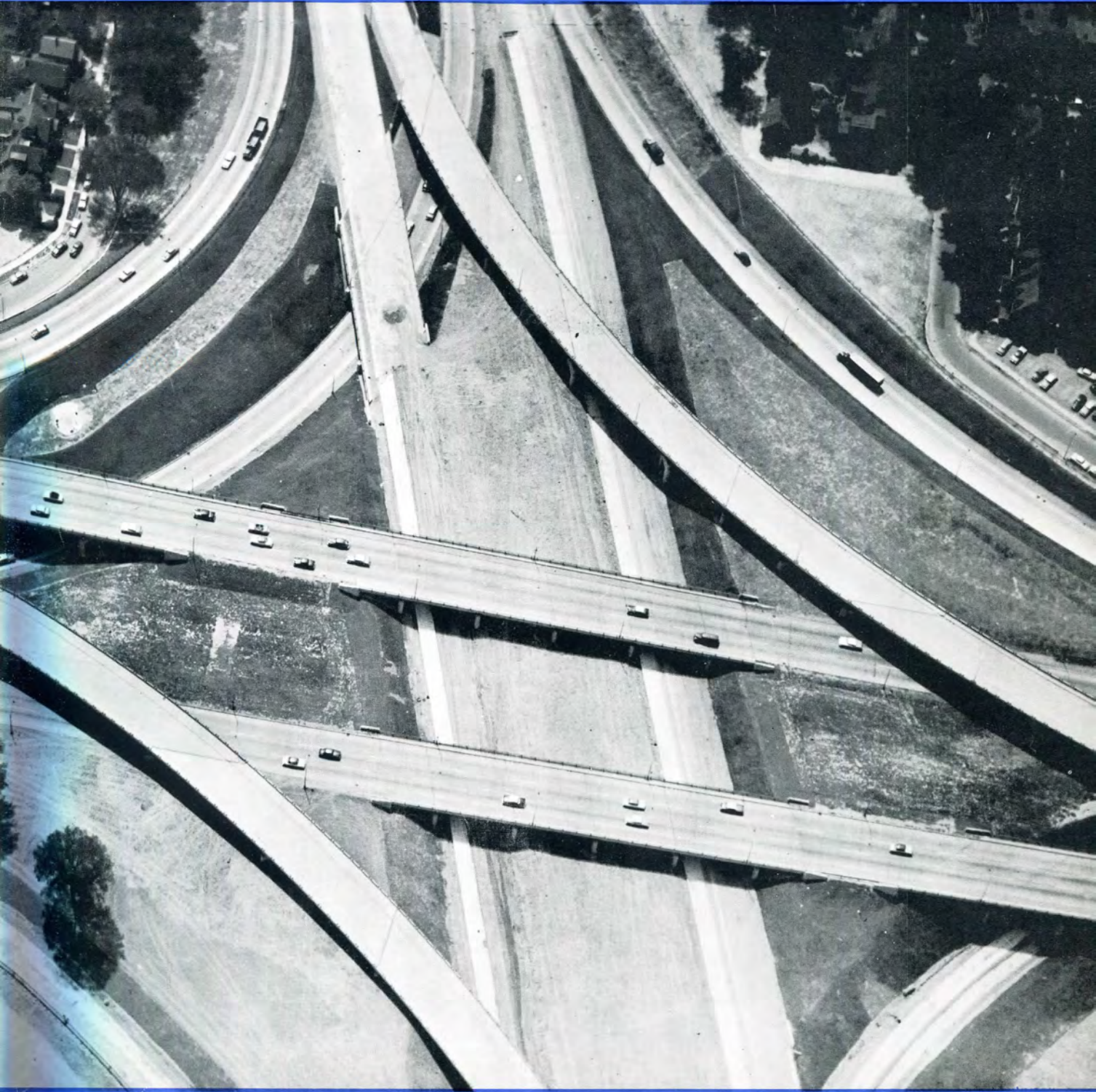
Foreword

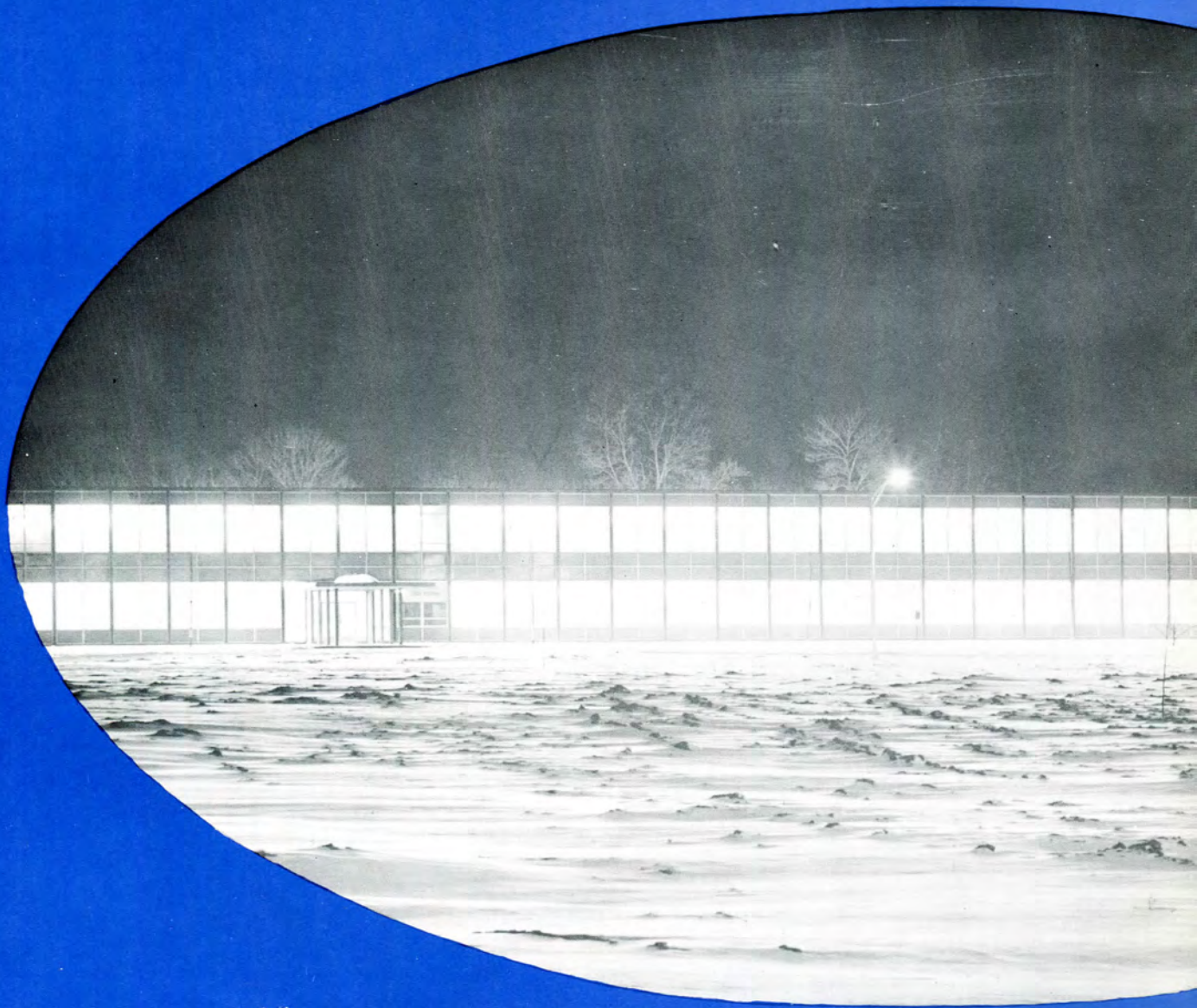
After leaving the bewildering sequences of college behind, there remains a melancholy feeling. "What does the future hold in store?" As is soon realized, ours is the future, and the future is bright.

Being the first graduating class of the new campus has a greater meaning than could at first be comprehended. It is soon realized that this edifice is one of the many symbols of man's struggle to improve himself, both intellectually and scientifically. This can only be accomplished by continually forging ahead.

Progress is our future theme. Individually or as a collective group we will strive to better ourselves, our community and our position in life and in this way be a credit to our nation and our alma mater. Only in this way can we help to benefit the world. Let us go ahead!







Our Alma Mater at night.

Table of Contents

FOREWORD	2
FROM DREAMS	6
TO REALIZATIONS	8
DEDICATION	14
ACADEMIC HEADS	16
DEPARTMENT CHAIRMEN	18
FACULTY	20
ADMINISTRATION	24
CANDIDATES FOR DEGREE	29
MESSAGE TO SENIORS	30
CLASSES AND ACTIVITIES	53
ATHLETICS	97
FRATERNITIES	113
ACKNOWLEDGMENTS	148



From Dreams . . .



DEAN RUSSELL ELLSWORTH LAWRENCE

Founder

1889-1934

"Lawrence Institute of Technology: Founded 1932" — these words have been repeated many times, yet they tell only part of the story. They tell nothing of the educator who, with firmness of purpose, founded Lawrence Institute of Technology.

Dean Russell Ellsworth Lawrence saw in his imagination the creation and future development of a college of engineering, dedicated to the education of engineers as leaders in a dynamic society. The dream was rich and fertile, as was the mind of the dreamer.

The depression was full upon the nation, magnifying the difficulties of birth a hundredfold. Dean Russell Ellsworth Lawrence accepted the challenge with characteristic enthusiasm, fortitude, and dedication. Thus the dream began to take form.

Due to his untimely death two years later, Dean Lawrence did not see the full realization of his dream. Although his part of making the dream come true was short-lived, it is difficult to believe that, without his convictions and inspiration, Lawrence Institute of Technology could have attained its present status as a leading college of engineering.

To Realization . . .



President E. G. LAWRENCE

In the face of seemingly insurmountable odds George E. Lawrence grasped the dream that had been his brother's and devoted his life to fulfill it. Thus he became one of the country's youngest college presidents. George Lawrence breathed hope and vitality into the young college and it grew and matured into the fine institution it is today.

The transition from Lawrence Tech's first conception to our present day of prosperity was the direct result of the wise planning and foresight of President Lawrence. Years of planning, hoping, and hard work culminated in Lawrence Tech finding a new home of her own in 1955.

This beautiful edifice shall stand as a lasting monument to a man who, with faith and determination, brought one man's dream to vivid reality. Our beloved President, George E. Lawrence.



Visitors and students, upon entering the main entrance, are greeted by this picturesque view of the lobby.



Students taking full advantage of the extensive facilities available in the new library.



Pictured above is an example of the modernistic mode of architecture prevalent throughout the new school. This is a view of the new physics lecture room.



For inspiration the students in the architectural drawing room need only turn to the windows and gaze upon the beauty of the ravine below . . .

Dedicatee



JOHN S. RACKWAY
1887-1955

Not only the L-Book staff, but every member of the student body of Lawrence Institute of Technology, unanimously chose as their dedicatee the recent, well loved Professor John S. Rackway.

The many ways in which he assisted us to greater heights . . . the friendly way he greeted us in classes . . . the way he responded to each of our particular needs in his field . . . all of these are but a part of our knowing this fine educator, this friend of students and men. The more one called upon him for advice, the more one felt that he was great in all fields of engineering, and that his advice was sound, basic and effective in advancing students in their engineering endeavors.

Men of this stature do not pass our way often in life . . . he is not only missed by the student body, but by the whole faculty and administrative body of our institution.

A man of many accomplishments, he was a State Examined (Dip. Eng.) Diploma Engineer. Technical University of Berlin, 1912; Instructor, 1920-23 and Professor, 1923-35 at School of Engineering, Berlin; Assistant Professor of Higher School of Engineering, Berlin, 1924-26. Technical University of Berlin, 1925-33; Instructor of Mathematics, Shanghai, China 1939-40. Shortly thereafter, and until his demise, he was associated with us as Department Head of Engineering Drawing.

As an Artist, Educator, Humorist, Eloquent Speaker, and an active member of Phi Kappa Upsilon Fraternity he participated in all school functions, activities, dances, and parties.

To all of us who knew him, we still feel his presence among us . . . his guiding hand encouraging us on and on . . . his friendly warmth still shining . . . and we will ever know the advantages of his technical know-how that he generously showered upon us.

Each of us feels that he, who has given so much to each of our lives, must surely be in for a reward and each of us knows that he must be at peace with His Maker . . . just as he was among us . . .



**MORDICA M. RYAN, DEAN, Engineering College,
DIRECTOR, Technical Institute**

Dean Ryan became a member of the faculty of Lawrence Institute of Technology in 1945, as Head of the Chemistry Department. In 1952 Dean Ryan left Lawrence Tech for a two-year period to accept a position as chief chemist for the Kaiser Engine Division of Kaiser Motors. In 1954 he returned to Lawrence Tech to become Director of the Technical Institute.

As Director, Dean Ryan arranged the curricula for the various programs offered and supervised their presentation. In this capacity he kept in close contact with both high schools and industry.

In July, 1955, Dean Ryan accepted new responsibilities when he became Dean of the Engineering College. Aside from his duties at Lawrence Tech, he is an active member of The American Society of Engineering Education, The American Society for Metals, The Michigan Training Council, and is a Commander in the United States Naval Reserve.



DOCTOR EDWIN O. GRAEFFE, DEAN Industrial Management College

Doctor Graeffe was one of a small group of men, along with Dean Russell E. Lawrence, who first recognized the need of establishing a new engineering college. Through the years the college has grown from a small handful of students to a major engineering college of nearly three thousand students under the helpful guidance of Doctor Graeffe.

Experience and background are valuable assets which provide Doctor Graeffe with a broad understanding of world affairs. He received his college education at the University of Tübingen,

Germany. In addition to these assets his work has carried him to various parts of the world.

This vast background of experience is interwoven into his many interesting lectures on accounting, economics, and business law. Having once been a lawyer himself, Doctor Graeffe stresses the necessity of clean, logical thinking on all decisions we find it necessary to make.

Doctor Graeffe has proved himself an excellent administrator as well as teacher in his capacity as Dean of the Industrial Management College.

Department Chairmen

When the successive events of college life draw to an end at graduation, the students remember with pride the faculty of the Lawrence Institute of Technology. The faculty consists of full-time and part-time instructors. Many of the part-time instructors are men who hold key positions in industry. In this manner the school is in direct contact with the everchanging problems of industry and the students are exposed to the basic problems of the modern day. Therefore the student, the school, industry, and the community prosper. It is with due respect and humility that these men are presented.



PROFESSOR EARL W. PELLERIN
Architectural Engineering



PROFESSOR ELWYN D. HANCOCK
Electrical Engineering



PROFESSOR HANS G. ERNEMAN
Mechanical Engineering



PROFESSOR HENRY NACE
Mathematics



PROFESSOR HAROLD C. BOOTH
Chemistry



PROFESSOR GAIL P. BREWINGTON
Physics

PROFESSOR HERBERT G. WILLI
English



PROFESSOR WILLARD O. KEIGHTLEY
Civil Engineering



Faculty

Presented on these facing pages are the men who really correlate the many varied curriculums of Lawrence Tech, besides meeting with the Deans.

GEORGE G. ALLISON
Mechanical Drawing



ARNOLD J. BLYTHE
Social Science

GEORGE F. BUTTS
Mechanical Engineering

GEORGE H. CLARK
Air Conditioning

GEORGE R. BINGHAM
Civil Engineering



MELVIN DIETZ
Electrical Engineering

EDMUND J. DOMBROWSKI
Chemical Engineering

WILLIAM F. S. DOWLDING
Industrial Engineering

ARTHUR D. HART
Electrical Engineering





JAMES B. HUGHES
Architectural Engineering

WILLIAM L. HUNLEY
Electrical Engineering

ROBERT J. KAMPHAUS
Chemistry

IRVING J. LEVINSON
Mechanical Engineering



LEONARD REAUME
Mechanical Engineering

JOHN L. SAFFER
Mechanical Engineering

ROY W. SCHENKEL
Mathematics

GEORGE W. SIERANT
Mechanical Engineering



FRANK J. ULLRICH
Industrial Engineering

CHARLES VRANIAN
Mechanical Engineering

JOHN L. WALKER
Mechanical Engineering

HURST E. J. WULF
Mathematics



Administrators & Staff



JAMES W. HOBSON
Business Manager



GENEVIEVE G. DOOLEY
Registrar



MICHAEL L. MITCHELL
Internal Auditor



WILLIAM C. BURKE
Director of Veteran Affairs and Student
Placement



CLAUDE BREAM



MARY LANDUYT
Librarian



EMMA HASSINGER
Book Store



MARGARET R. DALE
Receptionist

Administrators & Staff (Continued)



JEANNE PRESTON



MARION ROGERS



THELMA KRAUSE



VIRGINIA LUCIK



LAURENE D. STEVENS

Cafeteria



MARTHA KARL
Cafeteria Manager

LUISE HANKE
Cashier



On January 18, 1956, the new cafeteria at Lawrence Institute of Technology opened its doors for its first customers. This was possible only through the many generous donations the cafeteria fund received.

May we, the student body of Lawrence Tech, take this opportunity to thank the Kresge Foundation, industrial firms of Detroit, and all the individuals who so generously contributed to Lawrence Tech's building fund.



Above: Students taking their choice of delicacies. Below: eating their dinners in the pleasing atmosphere of the new cafeteria.





Candidates for Degrees



Message to Seniors . . .

LAWRENCE INSTITUTE OF TECHNOLOGY

21000 WEST TEN MILE ROAD

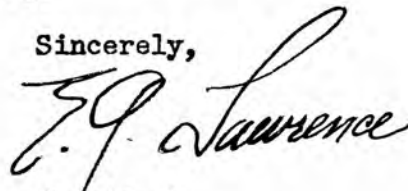
DETROIT 19, MICHIGAN

Dear Senior:

This is your big year, the one in which you graduate from college. How long have you been going to school? It has been a long, difficult grind, hasn't it? I am proud of you for the courage and resolute spirit which has made this achievement possible. With such solemn proof of your moral fiber and intellectual maturity, I have no questions about your future success. You can and you will make LIT proud to be known as your Alma Mater.

We can build many buildings and win many victories but the real, lasting reputation of the college rests with you. Your college will never be any better than the career you build for yourself. Make it big.

Sincerely,



E. J. Lawrence

President

College of Engineering

The general purposes of the Lawrence Institute of Technology are two-fold: first, to provide a high standard of college education, and second, to provide the nation with young men who are specifically trained to maintain and develop its industry and commerce.

Lawrence Institute of Technology was incorporated in 1932. The charter provides full authority to confer Bachelor of Science and also advanced degrees in the following fields of engineering: Architectural, Civil, Industrial, Electrical, Mechanical, and Industrial Management.

Upon completion of the required subjects the following men will be eligible.



ABBAY, GERALD G., B.S.E.E.
S.A.E.



ABRAHAM, PAUL R., B.S.I.M.



ACCAVITTI, FRANK, B.S.I.M.



ANDERSEN, GUDMUND, B.S.M.E.
Rho Delta Phi
S.A.E.



AUER, RICHARD A., B.S.M.E.
S.A.E.
I.F.C.
Bowling Team



BASILICO, JOHN, B.S.I.M.
Basketball



BINSFIELD, JOHN E., B.S.E.E.
Senior Secretary-Treasurer (night) '56



BOYD, WILLIAM J., B.S.E.E.
Rho Delta Phi
S.A.E.

BRATT, KENNETH T., B.S.E.E.
Phi Kappa Upsilon, Recording and
Corresponding Secretary
Lambda Iota Tau
S.A.E.
Student Council, Recording Secretary



BRAUN, THOMAS M., B.S.M.E.
Phi Kappa Upsilon, President '55-'56
Pledgemaster '54-'55
Council Representative '54-'55
Junior Class President
Senior Class President
S.A.E.

BRAUN, ROY, B.S.M.E.



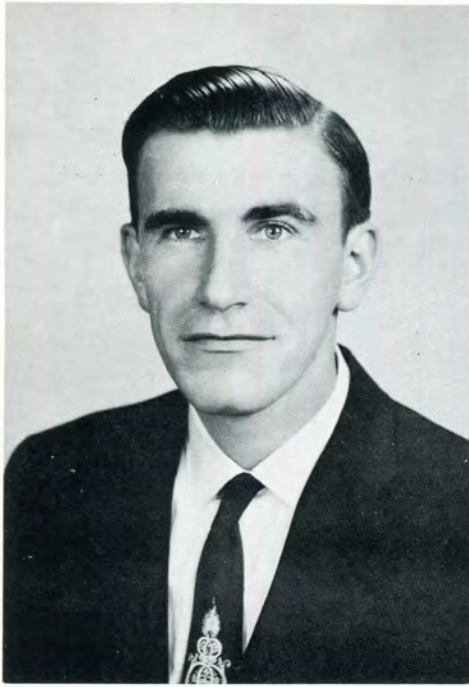
BRINES, GERALD, B.S.M.E.
S.A.E.
L-Book Staff

BUTTS, WILLIAM E., B.S.M.E.



CAMILLETTI, ANTHONY M., B.S.M.E.
Rifle Team
Varsity Club
S.A.E.





CARMODY, ALFRED J., B.S.M.E.
S.A.E.

COOPER, DAVID P., B.S.M.E.
Phi Kappa Upsilon



CORBACS, EARL P., B.S.C.E.

COZZARIN, EDWARD, B.S.I.E.



CUMMING, JAMES C., B.S.M.E.
Kappa Sigma Kappa, Vice-President
'49
Rifle Team
Pistol Team

DAILEY, KARL WILLIAM, B.S.M.E.
S.A.E.

DONAHUE, JAMES L., B.S.I.E.



DOTY, WILLIAM, B.S.M.E.

Kappa Sigma Kappa, Treasurer '55-'56
Fraternity Representative KSK
Freshman Vice-President
Sophomore Vice-President
Student Council, Parliamentarian
Treasurer
S.A.E.
Class Secretary '55-'56



DRAKE, WALTER, B.S.I.E.



DRIVER, KENNETH H., B.S.M.E.

Student Council, Recording Secretary
'55-'56



EDWARDS, KEITH P., B.S.I.M.

Alpha Gamma Upsilon, President '55
Pledgemaster '55
Recording Secretary '50-'54-'55
Sophomore Secretary-Treasurer
Society of Automotive Engineering
American Chemical Society



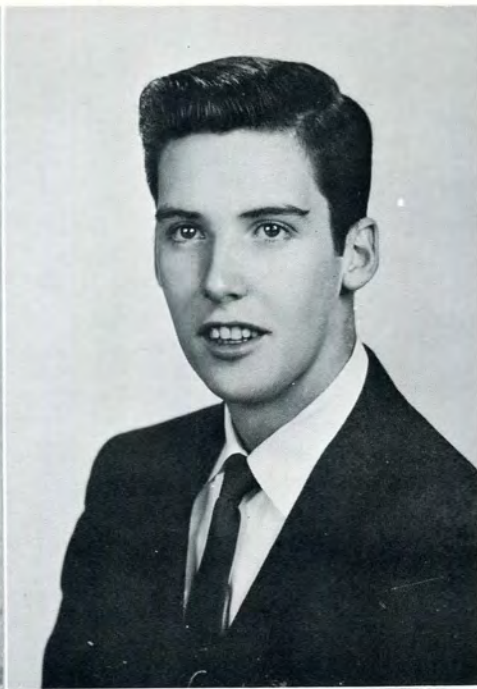
FLESHNER, JOE, B.S.Ar.E.

Rho Delta Phi
Tech News Representative '55-'56
Editor '55-'56
Architectural Club
Junior Class Treasurer
Senior Class Treasurer





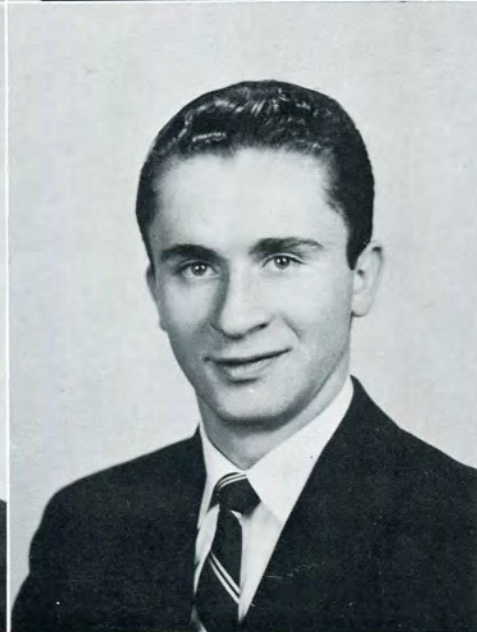
GALBRAITH, DAVID ALEXANDER,
B.S.I.E.
Rho Delta Phi
S.A.E.
L-Book, Photographer '56
S.A.M.
A.S.T.E.



GAST, GARY C., B.S.E.E.
Rho Delta Phi, Pledgemaster '54
Vice-President '55
I.F.C. Representative '56
L-Book, Assistant Editor '55
L-Book, Editor-in-Chief '56



GIELDOWSKI, CHESTER, B.S.M.E.
Phi Kappa Upsilon, Warden '55
Senior Vice-President (night) '56



GOLDBERG, MORTON J., B.S.E.E.
Rho Delta Phi
S.A.E.



GORAN, LEO, B.S.E.E.
Phi Kappa Upsilon, Representative
Student Council
S.A.E.



HEATER, RICHARD W., B.S.I.E.
Rho Delta Phi
S.A.E.

HENRY, CHARLES L., B.S.I.E.
 Alpha Gamma Upsilon
 Lambda Iota Tau
 Junior Class President
 Sophomore Class Election Comm.
 Chairman
 S.A.E., Treasurer
 American Chemical Society,
 Vice-President '50-'51
 Recording Secretary '49-'50
 Student Council, Recording Secretary



HODNICKSAK, JOHN, B.S.M.E.



JACKS, JR., MARSHALL, B.S.M.E.
KANON, WILLIAM J., B.S.M.E.
 S.A.E.



KATZMAN, MAURICE, B.S.M.E.
 S.A.E., Vice-President '54-'55
 President '55-'56
 Tech News Reporter
 L-Book, Business Manager '55-'56
 Student Council Representative
 Camera Club
 Frosh Fling Committee '53-'54
 J-Prom Committee '54-'55
 Mechanical Engineering Club
 A.S.T.E.

KILANDER, SHERWOOD, B.S.M.E.



KISELIS, LAWRENCE E., B.S.M.E.
Phi Kappa Upsilon, Pledgemaster
'53-'54
President '54-'55
Freshman Class Vice-President
Sophomore Class President
S.A.E.
Math Club

KOENIG, ELMER E., B.S.E.E.



KOPEC, JR., ANDREW, B.S.I.M.

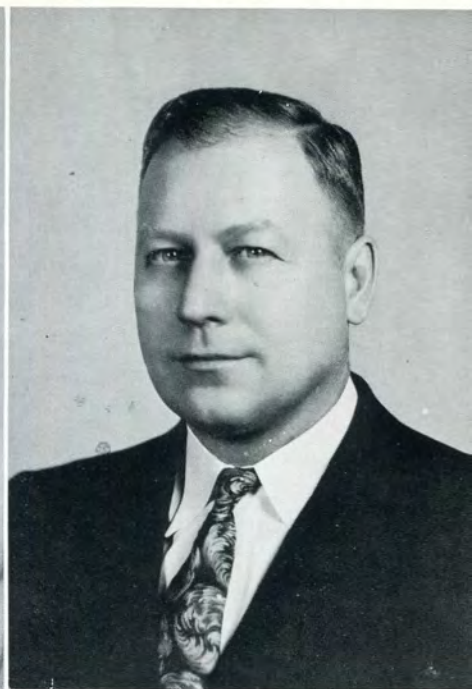
KORENKIEWICZ, STANLEY, B.S.E.E.



KORT, WERNER W., B.S.M.E.

KOURTJIAN, JERAIR, B.S.Ar.E.
Alpha Gamma Upsilon, President '55
Treasurer '54
Architectural Club

KRONBACH, ROLAND G., B.S.M.E.
Kappa Sigma Kappa



LaGRANT, ROY, B.S.E.E.

LARGES, ERNEST R., B.S.I.E.



LARSEN, JOHN O., B.S.C.E.



OMAS, ROSENDO, B.S.M.E.



MILLER, ROBERT A., B.S.I.M.
Alpha Gamma Upsilon, Recording
Secretary '53
Treasurer '54
Fencing Team, Co-Captain '54-'55-'56





MOLLON, LESLIE, B.S.M.E.
Alpha Gamma Upsilon, Corresponding
Secretary '49-'50



MONTGOMERY, JAY, B.S.Ar.E.
Kappa Phi Sigma, Corresponding
Secretary '53-'54
Recording Secretary '55-'56
Treasurer '54-'55
Architectural Club
Tech News, Reporter
Assistant Editor '55-'56
Architectural Club, President '55-'56
S.A.E.



MOSHER, ROBERT R., B.S.I.E.



NOWICKI, QUENTIN WILLIAM,
B.S.M.E.
Kappa Sigma Kappa
S.A.E.

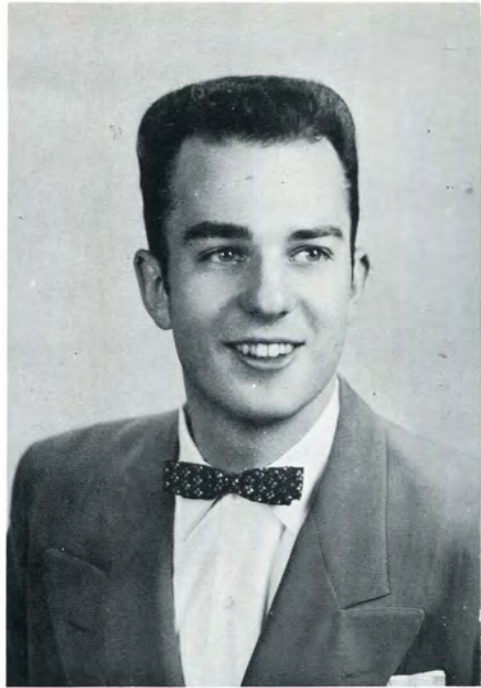


ORLICH, JOHN JOSEPH, B.S.C.E.



PATTERSON, VAUGHN, B.S.M.E.
Phi Kappa Upsilon
S.A.E., Treasurer '53-'54
S.A.M.
S.A.T.E.
Freshman Secretary-Treasurer

PELLER, ROBERT VINCENT, B.S.M.E.
Kappa Sigma Kappa, Pledgemaster
'55-'56
S.A.E.
Tech News Reporter
Mechanical Engineering Club



PEYCHICK, GEORGE M., B.S.M.E.

PRIEBE, EDWARD T., B.S.M.E.
Rho Delta Phi, Treasurer '51-'52
Recording Secretary '52-'53



QUANDT, HENRY, B.S.M.E.
Rho Delta Phi

REA, GENE G., B.S.I.M.
Kappa Phi Sigma, Recording
Secretary '53-'54
S.A.M., Representative '52-'53



RICHTER, CALVIN E., B.S.C.E.

TECHLOW, JEROME, B.S.E.E.
THOMPSON, LAWRENCE R., B.S.I.E.
Rho Delta Phi, Treasurer '53-'54
Vice-President '55-'56
S.A.E.



STRETN, EDGAR G., B.S.E.E.
S.A.E.
SWANSON, NORMAN G., B.S.E.E.



SOBSON, RONALD W., B.S.M.E.
SOLGAN, ROBERT, B.S.M.E.
Phi Kappa Upsilon



SOBSON, RONALD W., B.S.M.E.

SOLGAN, ROBERT, B.S.M.E.

Phi Kappa Upsilon



STRETEN, EDGAR G., B.S.E.E.
S.A.E.

SWANSON, NORMAN G., B.S.E.E.



TECHLOW, JEROME, B.S.E.E.

THOMPSON, LAWRENCE R., B.S.I.E.

Rho Delta Phi, Treasurer '53-'54

Vice-President '55-'56

S.A.E.





TIMLIN, JR., JAMES E., B.S.I.M.
S.A.M., Vice-President '55-'56



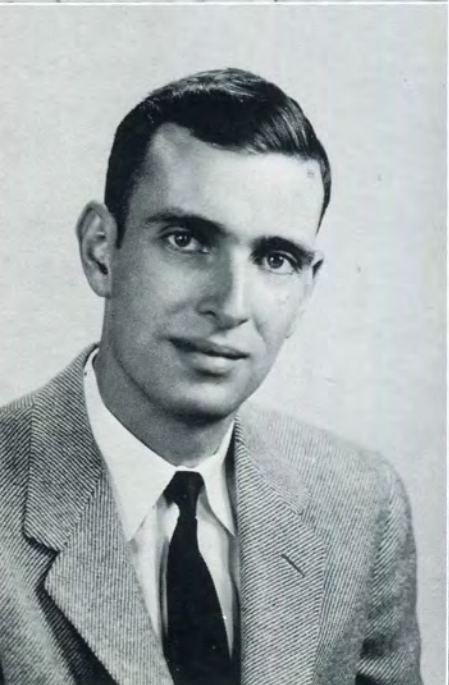
TOAL, FREDERICK L., B.S.M.E.
Math Club, President '54-'55
S.A.E.
Tech News Reporter



TOMICH, RAYMOND P., B.S.I.M.
Basketball



TREVITHICK, THOMAS C., B.S.I.M.
Rho Delta Phi



TRUESDELL, LOUIS P., B.S.I.M.



UGO, JOHN W., B.S.E.E.

URQUHART, ROBERT J., B.S.E.E.

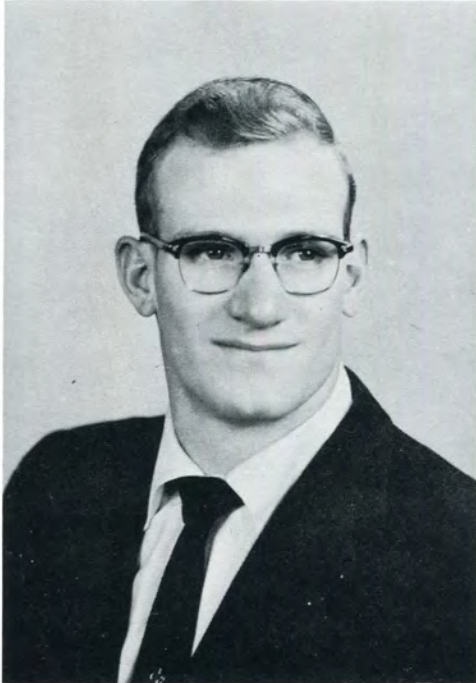
Rho Delta Phi, Secretary
Fraternity Reporter
S.A.E.
Tech News Reporter
Lamda Iota Tau



VEIGHEY, GILBERT, B.S.M.E.

WHEELER, GLENN R., B.S.I.M.
Basketball

WHITFIELD, GENE H., B.S.I.M.
S.A.M., Secretary



YASENCHAK, RONALD S., B.S.I.M.

Fencing Team, Captain '53
Co-Captain '54-'55

ZOYA, WALTER J., B.S.I.E.



The Technical Institute

In the past decade industry has rapidly increased in mechanization and in its requirements for skilled engineering technicians, and in turn decreased its requirements for physical labor. These technicians require a working knowledge of physics, chemistry, mathematics, electricity, technical drawing and English, as well as a general knowledge of the problems confronting industry today. They must through actual experience have developed initiative, reasoning ability, discrimination, judgment and self-confidence so that they can apply the knowledge they have acquired to practical technical problems and produce satisfactory results in a minimum of time.

The Technical Institute offers specialized programs of study designed to meet the demand for engineering technicians. These programs closely parallel engineering college curriculums.

The Engineers' Council for Professional Development is one nationally recognized agency which accredits technical institute curricula. This body has defined programs of study which are of the technical institute type by stating the purpose is to prepare individuals for various technical positions or lines of activity encompassed within the field of engineering.

The Technical Institute has used this definition as a guide in the organization, development and operation of its programs of study. Upon completion of the required subjects the following men will be eligible for an Associate in Engineering degree in Building Construction, Electrical and Electronic, Industrial Supervision, Refrigeration and Air Conditioning, or Mechanical Technology.



ALLISON, CHARLES, A.E.M.T.



ANDRESICK, MARVIN V., A.E.E.E.T.

ASHBAUGH, ALBERT M., A.E.P.T.D.T.

BIEN, ALFRED A., A.E.M.T.
Sigma Kappa Psi



BOSWELL, ADRIAN A., A.E.E.E.T.

BRISKEY, LAWRENCE D., A.E.M.T.



BUMLER, ROLLAND, A.E.A.C.R.T.

COON, JOSEPH A., A.E.M.T.





EVANCHO, ROBERT, A.E.M.T.
Sigma Kappa Psi, Pledgemaster '56
Student Council, Secretary-Treasurer,
'55-'56
A.S.T.E.



GREEN, RICHARD D., A.E.M.T.
Sigma Kappa Psi, President '56
Class President, 4th and 5th Terms
A.S.T.E.



HENNESSEY, EDWARD J., A.E.E.E.T.



HUNTLEY, JOHN H., A.E.M.T.
Sigma Kappa Psi
S.A.E.



KEMP, JAMES E., A.E.E.E.T.



KOSLA, ANTHONY, A.E.A.C.R.T.

KRYWYJ, JAROSLAW S., A.E.M.T.
Secretary Class of '56
S.A.E.



LEISBERG, ARMAND, A.E.M.T.
Sigma Kappa Psi
A.W.S.



MARTINICO, ANTHONY V., A.E.M.T.
Sigma Kappa Psi
A.S.T.E.



MERCATANTE, FRANK J., A.E.M.T.



MEECH, CURTIS, A.E.E.E.T.

MYHREN, WILLIAM G., A.E.M.T.





NOBLE, GILBERT E., A.E.E.E.T.



PALLISTER, RICHARD, A.E.M.T.



PERPICH, FRANK, A.E.A.C.R.T.



POSTLETHWAITE, JOHN R., A.E.M.T.
Sigma Kappa Psi, Secretary-Treasurer
'56
Class Vice-President, 5th Term
A.S.T.E.



ROWE, RICHARD G. A.E.I.S.T.



SCANLON, JEROME M., A.E.M.T.
Sigma Kappa Psi

SPADAFORE, TONY, A.E.I.S.T.

Sigma Kappa Psi, Vice-President '56
Senior Class President '56
Student Council, Election Committee
Chairman
S.A.E.



TOMCZYK, STANLEY, A.E.M.T.

TURCZYN, PETER A., A.E.M.T.

Vice-President Senior Class '56
S.A.E.



VANDERKAY, WILLIAM, A.E.M.T.

WIK, JOHN A., A.E.M.T.

Sigma Kappa Psi, Pledge Committee

ZIOLE, SAM B., A.E.M.T.



Camera Shy

College of Engineering

DONALD G. BAMFORD	B.S.I.E.
ROBERT J. CHESNEY	B.S.I.E.
WALTER E. DZURUS	B.S.I.M.
FREDERICK C. HOWES	B.S.E.E.
WERNER M. KILLEN	B.S.I.M.
HAROLD A. KUYPERS	B.S.M.E.
WILLIAM MADALIN	B.S.C.E.
ALBERT R. OLSON	B.S.M.E.
BRUCE C. PEUTERBAUGH	B.S.I.E.
ROBERT POPE	B.S.Ar.E.
GEORGE RUPINSKI	B.S.I.E.
JOHN A. TURCHAN	B.S.E.E.
DAVID F. ZUHLKE	B.S.M.E.

Technical Institute

CHARLES D. ALLISON	A.E.M.T.
JOSEPH CHEEK	A.E.I.T.
SYLVESTER DRITAR	A.E.M.T.
JAMES QUINN	A.E.M.T.
ROGER WEST	A.E.I.T.



While the city sleeps . . . the future engineers
and associates are preparing for their future.



Classes and Activities



Senior Class Officers



Left to Right: W. Doty, Secretary; D. Moore, Vice-President; T. Braun, President; J. Fleschner, Treasurer.

Day School



Left to Right: J. S. Krywyj, Secretary; T. Spadafore, President; P. A. Turczyn, Vice-President.

I.T.I. - Section 5 & 6



Architectural Seniors Jay Montgomery and Joe Fleshner humorously discussing their forthcoming senior projects.



Above, seniors T. Braun, G. Gast, W. Levon, and D. Nakoneczny preparing to run an experiment in the Heat Engines Laboratory. Below, Professor Erneman and a group of seniors inspect a new Studebaker-Packard Engine donated to the school.





A Job Well Done

During the second term, the Mechanical Engineering Seniors constructed a furnace for melting aluminum.

This was not just another project. It required extra work of all participating on the project. Besides the regular class meetings, Professor Levinson and the seniors donated their free time on Saturdays to make this project a reality.



Electrical Engineering Seniors, under the close supervision of Professor Hart, puzzle out an experiment in the Electrical Laboratory.



President Tom Braun conducting a senior class meeting to appoint committees for the forthcoming Senior Stag.

A group of the seniors enjoying a well-deserved coffee break.



Senior Stag

This year the Senior Class of 1956 held its annual Senior Stag at Haven Hall, on Thursday, April 5. In attendance were many of the Seniors and Faculty. Pictured below from left to right are Mr. Nace, Mr. Burke, Mr. Levinson, Senior Class President T. Braun, and Secretary W. Doty.



Seniors dig into the delicious food. . . .



Junior Class Officers



Left to Right: D. Wilson, Secretary; J. Albrecht, Vice-President; D. Fitzsimons, President; R. Marbrey, Treasurer.

Day School



Left to Right: C. Hall, Vice-President; T. McHenry, Secretary-Treasurer.

J-Prom Committee

Rounding out Tech's annual social events is the J-Prom, which will take place this year some time in the latter part of May.

This event, which proved last year to be one of the most popular social events on campus, is sponsored by the junior class and is hoped to be bigger and better than last year.

The J-Prom committee at the present is deciding the exact date and place for this dance. We wish to them the best of luck in making this dance a huge success.



Standing, left to right: D. Marbrey, D. Wilson, J. Albrecht.

Seated, left to right: E. Gengenbach, D. Fitzsimons.



The junior year consists of a long succession of laboratory experiments. There are electrical, mechanical, and surveying experiments to be performed by the juniors. After the gathering of data the student interprets its significance in the form of a report.

Juniors in the process of collecting data.



Professor Hancock standing by to help correct the set-up or answer any questions.





Civil Engineering students at work on a field experiment, and one of the obstacles they encountered.





THEORY AND PRACTICE. . .

Sophomore Class Officers



Left to Right: D. Zinger, Vice-President; W. Zachary, Treasurer; R. Daily, Secretary. Seated: J. Judge, President.

Day School



Seated, Left to Right: J. R. Judge, D. Zinger. Standing: R. Daily, W. Zachary, and V. Boynes.

Each fall the Freshman Class of Lawrence Tech is subjected to the rigors of "Hell Week", which is rewarded by the Frosh Fling. It is the responsibility of the Sophomore Class to put the freshmen through these rigors and sponsor the Frosh Fling.

This year the Frosh Fling was held on October 8, 1955, at 9 p.m. to the excellent music of Don Pablo in the Colonade Room at the Masonic Temple.

This, the first social event of the year, proved to be a huge success financially as well as socially. This can be attributed to generous support of the student body and the outstanding work of this year's Frosh Fling Committee. The committee has the responsibility of selecting a suitable site for the dance, obtaining and selling tickets, and hiring an orchestra that offers fine music.

For such an enjoyable evening, congratulations are extended to the Sophomore Class.

Frosh Fling Committee

The sophomore class of 1956 will well remember the many hours spent in connection with their physics laboratory experiments. It was in this laboratory that the sophomores applied their theory, gained from the lectures, to the experimental problems of mechanics, electricity, heat, light, and sound.





Having gained invaluable theory in descriptive geometry, the sophomores now undertook the task of applying these principles to the solution of complicated drawings.

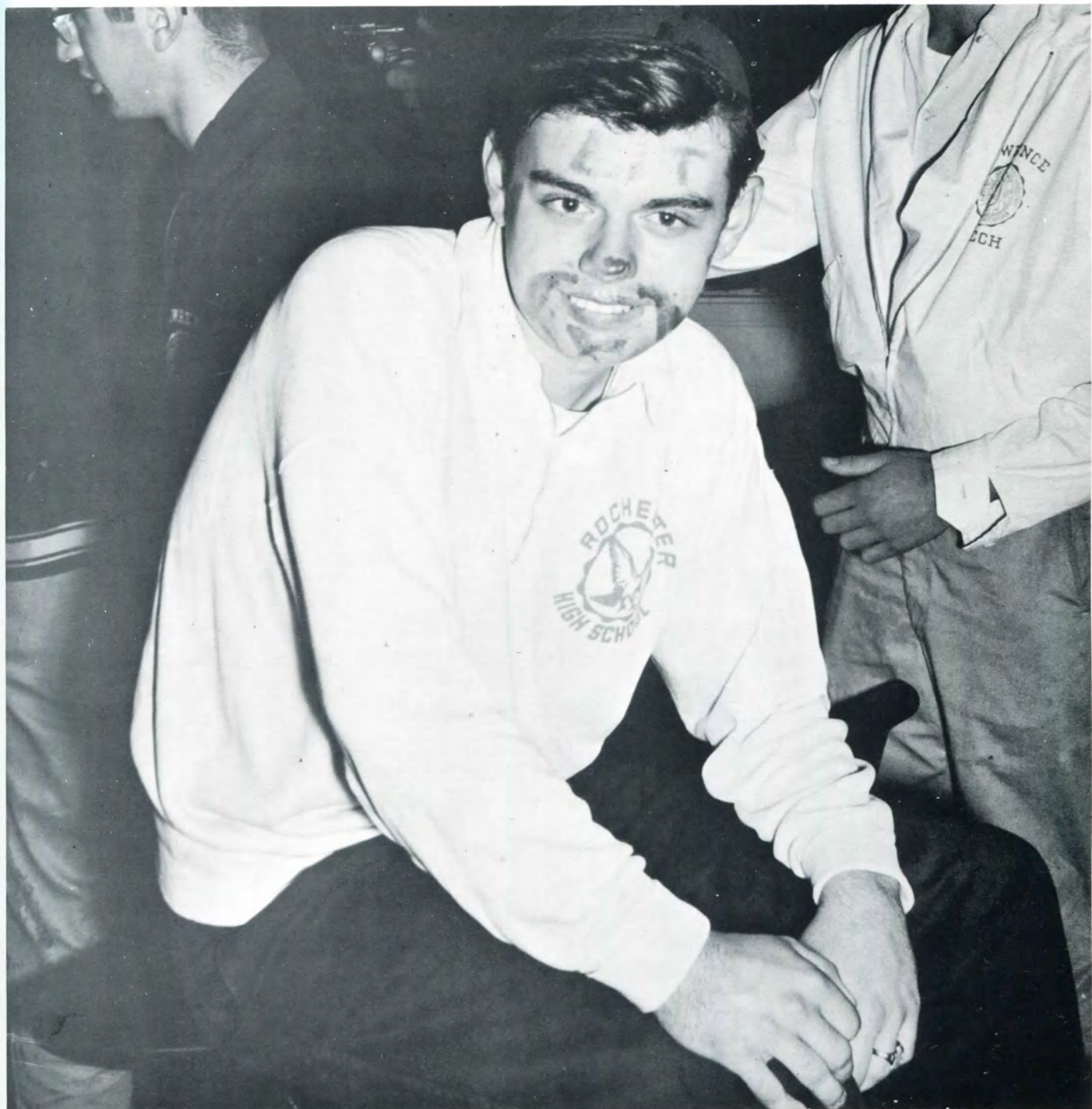
Freshmen Class Officers



Left to Right, Seated: J. Liske, President; M. Busch, Secretary. Standing: G. Stucky, Vice-President; T. Gossett, Treasurer.

Day School

Hell Week

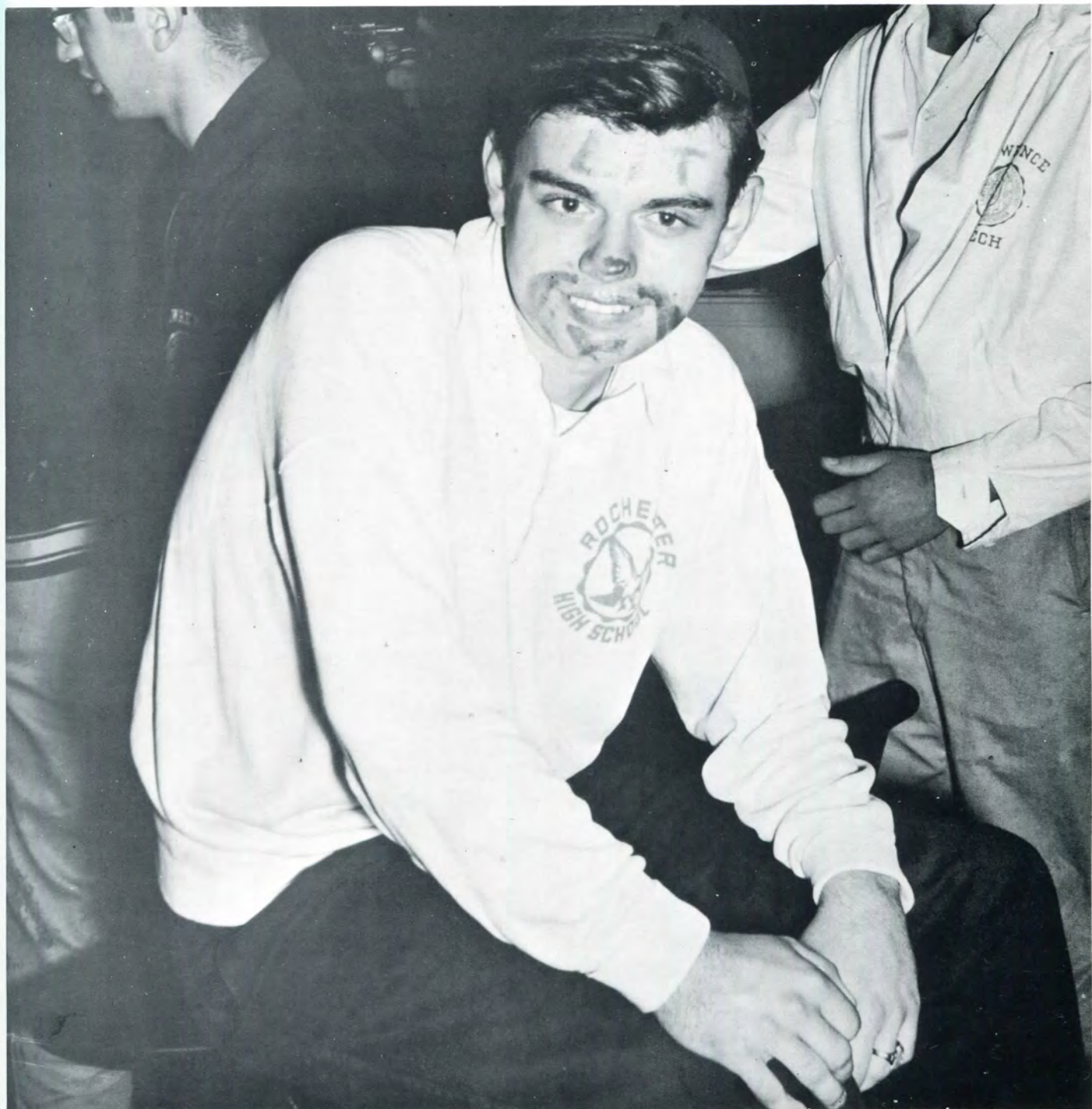


Each fall one week is set aside and is known as "Hell Week".

The purpose of "Hell Week" is to acquaint the upper classmen and fraternities on campus with the incoming Freshmen. During this week the Freshmen are required by Sophomore Law to wear beanies, with attached balloons, and to have their right pant leg rolled up to the knee, in addition to carrying matches and showing respect to upper classmen.

On Friday of "Hell Week" a Kangaroo Court is held to judge the violators of the Sophomore Law. The guilty are now presented!

Hell Week



Each fall one week is set aside and is known as "Hell Week".

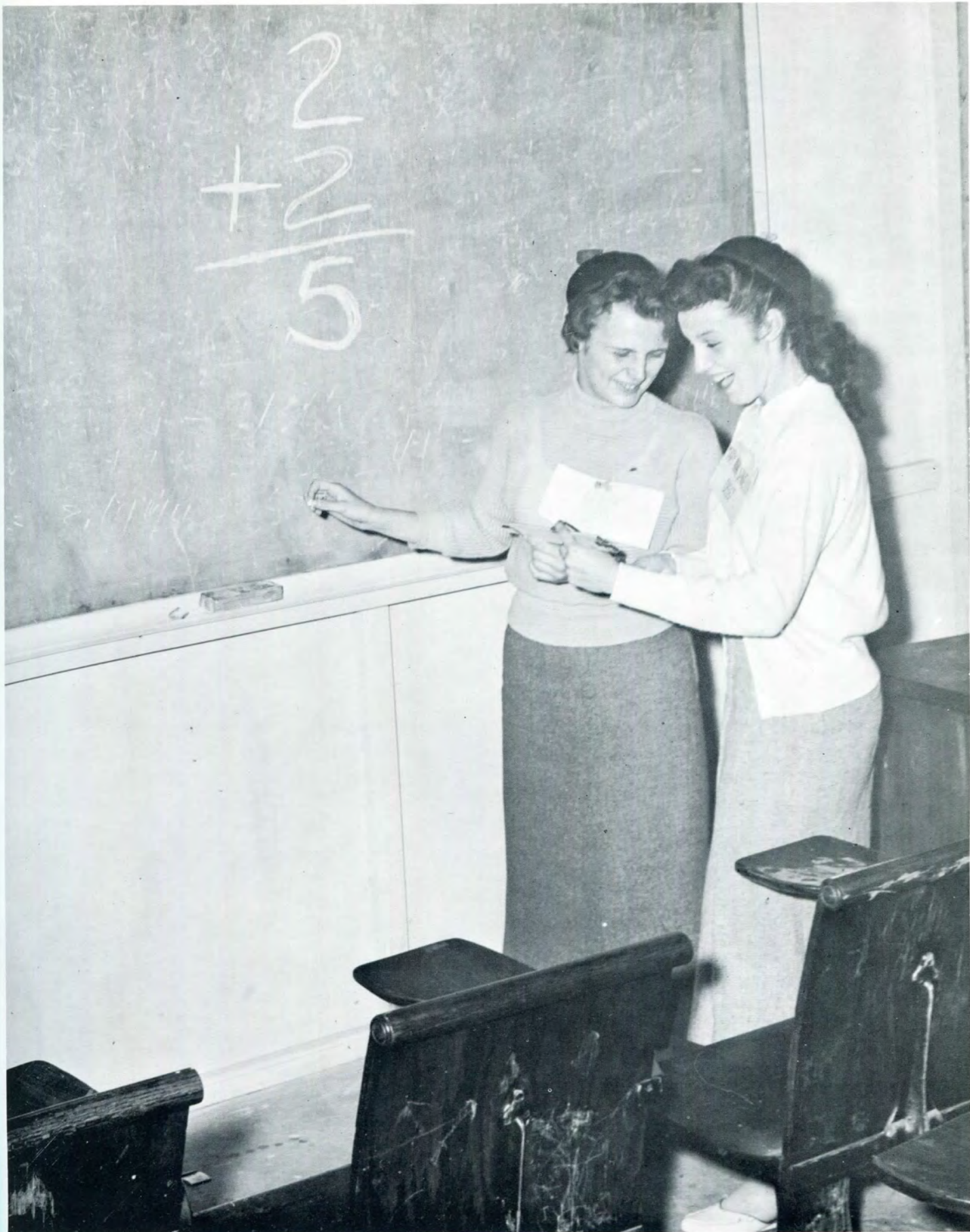
The purpose of "Hell Week" is to acquaint the upper classmen and fraternities on campus with the incoming Freshmen. During this week the Freshmen are required by Sophomore Law to wear beanies, with attached balloons, and to have their right pant leg rolled up to the knee, in addition to carrying matches and showing respect to upper classmen.

On Friday of "Hell Week" a Kangaroo Court is held to judge the violators of the Sophomore Law. The guilty are now presented!



Above: Keeping a cool head. Below: The Four Musketeers.





Introduction to calculus?

Frosh Fling



Part of the large crowd enjoying the first social event of the year. . . .

To climax Freshmen Initiation the Sophomore Class sponsors a dance in honor of the Freshmen called the Frosh Fling. It is at this dance that past experiences are forgotten and the Freshmen are officially welcomed.

This year the Frosh Fling was held at the Masonic Temple on Saturday evening, October 8. The music was presented by Don Pablo and his orchestra.

Student Council



The council officers are, left to right: R. Judge, Social Chairman; J. Parker, Election Chairman; J. Kourtjian, President; W. Doty, Treasurer; H. Barnett, Recording Secretary.

Student government at Lawrence Tech is evidenced by the working of the Student Council. The bimonthly meetings serve as a sounding board for the student and organizational problems. During the past school year, the Council has been headed by President Jerry Kourtjian.

Heated discussions are the rule, rather than the exception at these meetings. However, in a true democratic spirit, minority yields to majority and in harmony the work is carried on.

Any student organization must have a close liason with the Administration to be successful. The 1955-56 Council has chosen Mr. I. Levinson, of the Mechanical Engineering Department as the Faculty Advisor. Mr. Levinson's comments and suggestions have proven invaluable when important issues had to be ruled upon.



Above is the Student Council in action solving one of the many problems that confronted them during the year.

Below, the class listened very intently.





This year the Student Council sponsored a Building Fund Raffle. The first prize, pictured above, was raffled off at a dance on April 21, 1956, at the State Fair Coliseum. Entertainment was provided by Pat Boone, Buddy Morrow, Lillian Briggs, and an All-Star Cast.

Architectural Club



*Seated, Left to Right: J. Prosser, Vice-President; J. Montgomery, President; J. Zaccagni, Treasurer.
Standing: D. Leash, Secretary; C. Danowski, Activity Chairman.*

The Architectural Club was founded for the purpose of increasing student interest in architecture by providing extra-curricular activities for them. The club is a junior chapter of the American Institute of Architecture, and all members are entitled to its benefits. Many lectures, by world renown architects, are sponsored each year by the A.I.A., as well as banquets and business meetings promoting the advancement of the profession.

Early in the school year the club sponsored field trips to: Midland, Michigan, the work site of Alden Dow; and to Chicago, Illinois, to see some of the works of Mies Van De Rohe, and of Frank Lloyd Wright. During the winter months several very successful day-night meetings were

held. Highlighting these meetings were movies and slides of historical and contemporary architecture both in the United States, and in Europe.

An outstanding event of the Club year is the annual banquet, at which an outstanding speaker is present. This banquet also serves to renew old friendships and to acquaint student members with the Alumni.

Through these varied activities, the club enables the student member to broaden his outlook, the reliability of his judgment, and the quickening of his personal accomplishment, as well as enables him to enrich himself through new friendships, prestige, and opportunity.

A.S.T.E

On November 22, 1955, the students of Lawrence Institute of Technology were honored in receiving a charter for the eleventh student chapter of the American Society of Tool Engineers. The charter was presented to the students at a dinner at the Rackham Memorial Building. This chapter is the newest and largest A.S.T.E. Student Chapter in the area.

The primary purpose of this organization is to advance the scientific knowledge in the field of Tool Engineering, which encompasses all phases of engineering related to manufacturing, and the means and methods of applying this knowledge in practice and education.

As a member of the Student Chapter, the student attends the meetings and functions of the Detroit and the National Section of the A.S.T.E., at which time he becomes familiar with the recent advances and developments of the tool engineering industry. These reports are presented to the student by many of the nations top engineers. Also included in the meetings are documentary films that relate to the profession.

The American Society of Tool Engineers is composed of men interested in furthering the development, interest, and education of their profession.



Civil Club



Left to Right: G. Custer, Secretary; J. Albrecht, President; V. Olesko, Vice-President; E. Jankowski, Treasurer.

The objectives of the Lawrence Institute of Technology Civil Club are to encourage the development of a professional consciousness, to afford an opportunity for civil engineering students to become acquainted, to practice working together effectively, to promote a spirit of congeniality among themselves, and to provide friendly contact with the engineering profession.

The club, reorganized in November, 1955, has about 20 members that attend the monthly meetings, which consist of movies pertaining to the subject and speakers from local engineering firms.

Campus activities range from the installation of the flume in the stream to the installation of the stairs into the valley for use by the student body.

The society is primarily technical and membership is open to all students majoring in civil engineering. The group functions through the Civil Engineering department with Mr. Keightley currently acting as its faculty advisor.

Mechanical Engineering Club

On November 4, 1955, a new organization was formed with the cooperation of Mr. Levinson and the senior class of 1956. This group of interested people founded the club with the express hope and belief that something constructive could be accomplished by the seniors of Lawrence Tech in their spare time. The primary purpose of such an organization would be to translate engineering principles and theory into practical applications.

The members worked together in designing and constructing apparatus for laboratory purposes. A fine example is the gas furnace that will be used to melt metals in future heat treat classes. In addition to the furnace, a table to make molds, tongs to grip and pour the melting pot, cope and drag molding sets, riddles to sift sand, bottom boards, and various other accessories were produced. With such a fine project completed, it is hoped that future members will also endeavor to continue this fine organization. A smoke tunnel is planned for the near future.

Seated, Left to Right: I. Levinson, Faculty Advisor; G. Brines, Chairman. Standing: M. Katzman, S. Seiner, Co-Chairmen.



Society of Automotive Engineers



Seated, Left to Right: M. A. Spinelli, Treasurer; Doctor Brewington, Faculty Advisor; M. Katzman, President. Standing: A. Krause, Vice-President; R. Rowe, Secretary.

The Society of Automotive Engineers is an organization whose object is to promote the Arts and Sciences, Standards, and Engineering Practices connected with the design, construction, and utilization of automotive apparatus.

As a member of the Student Branch, the Engineering Student may attend the regular meetings of the Detroit Section of the S.A.E. and become familiar with the recent advances in engineering techniques, while hearing many of the country's top engineers. Included in the Student Membership is a year subscription to the S.A.E. Journal,

which contains technical reports on the improvements and developments in all phases of engineering.

Each year the Student Branch enjoys a field trip to observe engineering practices in industry. This year the members went to Chevrolet Gear and Axle plant for a dinner and plant tour.

Student Branch meetings are held for the purpose of acquainting student members with the many facts of engineering. The Branch meetings are supplemented by regular Detroit Section meetings and the S.A.E. Journal.

Society for Advancement of Management

"Through research, discussion, publication, and other appropriate means to conduct and promote scientific study of the principles governing organized effort in industrial and economic life . . . for the general betterment of society . . ." S.A.M. Constitution.

The Society for the Advancement of Management is the recognized national professional organization of management people in industry, commerce, government, and education.

The university chapters attempt to bring the student closer to the business world by bringing them into contact

with business leaders through publications and direct contact at meetings. It also serves as a medium for the exchange and circulation of information on the problems, policies, and techniques of the industry and management. The society aspires to instill in the manager and employee alike, the conception of individual and collective social responsibilities through the use of improved management practices.

Through the development of management philosophy, the student becomes better equipped to cope with the problems of the profession and improve relations with those people with which he comes in contact.

Left to Right: G. H. Whitfield, Secretary; J. Timlin, Vice-President; W. Richardson, Treasurer; B. Hamilton, President.



Camera Club



Left to Right: D. Haun, E. Gengenbach, T. Easterday, and B. Chapman.

The Camera Club of Lawrence Institute of Technology was re-organized this year. Besides conducting business meetings, the club sponsored a contest. The subject had to be a winter scene at Lawrence Tech that was suitable for reproduction on Christmas cards.

Publications



The core of the publications for 1955-56 are, *Left to Right*: J. Fleshner, Editor, Tech News; D. Mulrenin, Business Manager, Tech News; Mr. J. Hobson, Faculty Advisor; G. Gast, Editor, L-Book; M. Katzman, Business Manager, L-Book.

L-Book



Editor-in-Chief, Gary Gast

The Annual of Lawrence Institute of Technology is called the "L-Book." The editor must be a senior and is selected by his classmates and the Student Council.

Upon completion of the editor's work, the publisher's work begins. To help understand the problems of the publisher and to realize the necessity of meeting the deadline, this year's staff toured the publisher's plant.

On the following pages are shown some of the operations involved in producing a yearbook after the book is handed in for publication.

Staff

Editor-in-Chief	Gary Gast
Associate Editor	Gerald Brines
Business Manager	Maurice Katzman
Assistant Editor	Gerald Wixson
Editorial Assistant	Walter Gosky
Photographer	David Galbraith
Typist	Robert Urquhart
Typist	Ernestine Houston

Mr. Al Weatherly, sales representative of Litho Arts, conducted the staff on the tour. The first stop was the layout and art department. Here, pictures are touched up, if necessary, and pages are pasted up.



Next, the pages are photographed four to five at a time by the mammoth camera on the right.

Left to Right: J. Wixson, Al Weatherly, J. Brines, G. Gast, and M. Katzman inspect a negative from the camera.



Al shows the staff a layout of pages produced by the negative on light-sensitive metal sheets.



The operations of the presses are pointed out to the staff. After the pages are printed, they are sent, along with the covers, to the binders to be bound. The finished book is then sent to the school for distribution.



Business Manager Maurice Katzman explains how he makes his spending money.



Tech News



Editor Joe Fleshner

Lawrence Institute of Technology's newspaper is known as the "Tech News." The Tech News is published every other Wednesday by the undergraduate students at Lawrence Tech and is a member of the Associated Collegiate Press.

Editorial Staff

Editor	Joe Fleshner
Assistant Editor	Jay Montgomery
News Editor	Rich Stewart
Photographic Editor	Eric Gengenbach
Staff	Declan Haun, Sam Weiner
Office Reporter	Robert Urquhart
Cartoonist	Herb Barnett
Sports Editor	Gerry Klees
Reporters	David Leash, Bill Doty, Fred Toal, Don Pierro
	Maurice Katzman
Typists	Judy Kessler, Mary Ann Spinelli, Marilyn Busch

Business Staff

Business Manager	Don Mulrenin
Circulation Manager	Wayne Phillips
Staff	Bill Shaver, Jerry Gross
Faculty Advisor	Mr. James W. Hobson

It is obvious from the quality of the Tech News that a tremendous amount of work is involved. To aid Joe in his work, Jay Montgomery stepped forward and offered his experience. Thus Jay deservedly became Assistant Editor.



Management of the financial attributes of the Tech News became the job of Business Manager Don Mulrenin. His job involved securing advertisements and establishing a budget.



Declan Haun served as photographer for the Tech News.

Robert Urquhart, as office reporter, gathered all announcements and news from the administration.





The typing for the Tech News was done by Judy Kessler, above, and Marilyn Busch, right.



David Leash was the reporter for the Architectural Department.

Alumni Dinner Dance



The alumni dinner dance, which was held March 3, 1956, at the Latin Quarter, was well worth the price of entertainment for the evening. Featured during the evening was dinner music by the Don Barie Trio, music for dancing was provided by Fred Netting and his orchestra.

The alumni dinner dance, always the outstanding alumni social event of the year, was planned bigger and better than ever this year. Those who have been to these affairs in the past, and this year included, know the wonderful time had by all in renewing old acquaintances and enjoying the company of fellow alumni.



Dancing to the excellent music of Fred Netting and his orchestra. . . .



Athletics



Basketball



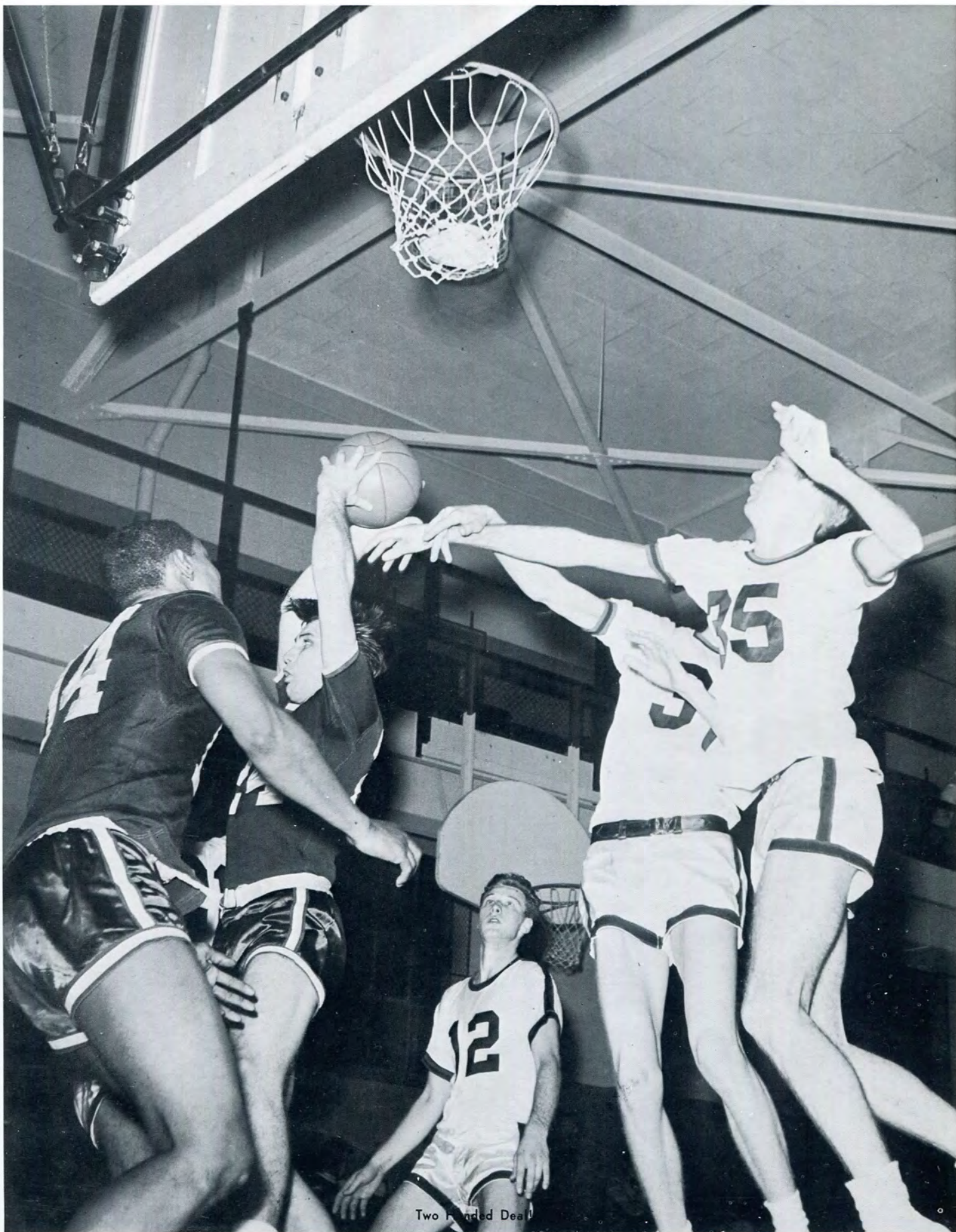
The 1955-1956 Basketball Squad. *Standing, Left to Right:* Coach Ray Mawhorter; Elvin Porter, C; Robert McGillviray, F; Frank Rothwell, F; Stan Sylvester, F; Ronald Wegert, C; Ray Tomich, G; Frank Accavitti, G; Walter Dzurus, F; John Basilico, F; Ken Kisabeth, G. *Kneeling, Left to Right:* Harry Mandziara, G; James Johnson, G; Glenn Wheeler, G.

Season Results

SCHOOL	SCORE	TECH	DATE
Alumni (L.I.T.)	65	66	November 29
Hanover	61	69	December 1
Assumption	73	87	3
Selfridge Air Force	61	68	6
Bliss	83	80	13
Findlay	92	87	15
Otterbein	72	75	20
Hope	98	67	29
Wheaton	99	52	30
Indiana Tech	85	73	January 3
Olivet	48	79	10
Flint J. C.	87	90	12
Baldwin-Wallace	98	77	14
Detroit Tech	72	65	18
Youngstown	92	66	21
Selfridge Air Force	71	83	25
Hanover	82	84	28
DePaul	98	58	30
Findlay	96	95	February 1
Indiana Tech	79	64	3
Steubenville	92	73	6
McMasters University	65	103	8
Siena	77	68	11
Assumption	96	86	14
Bliss	93	90	18
Rio Grande	84	79	21
Detroit Tech	68	74	28



Successful Block?



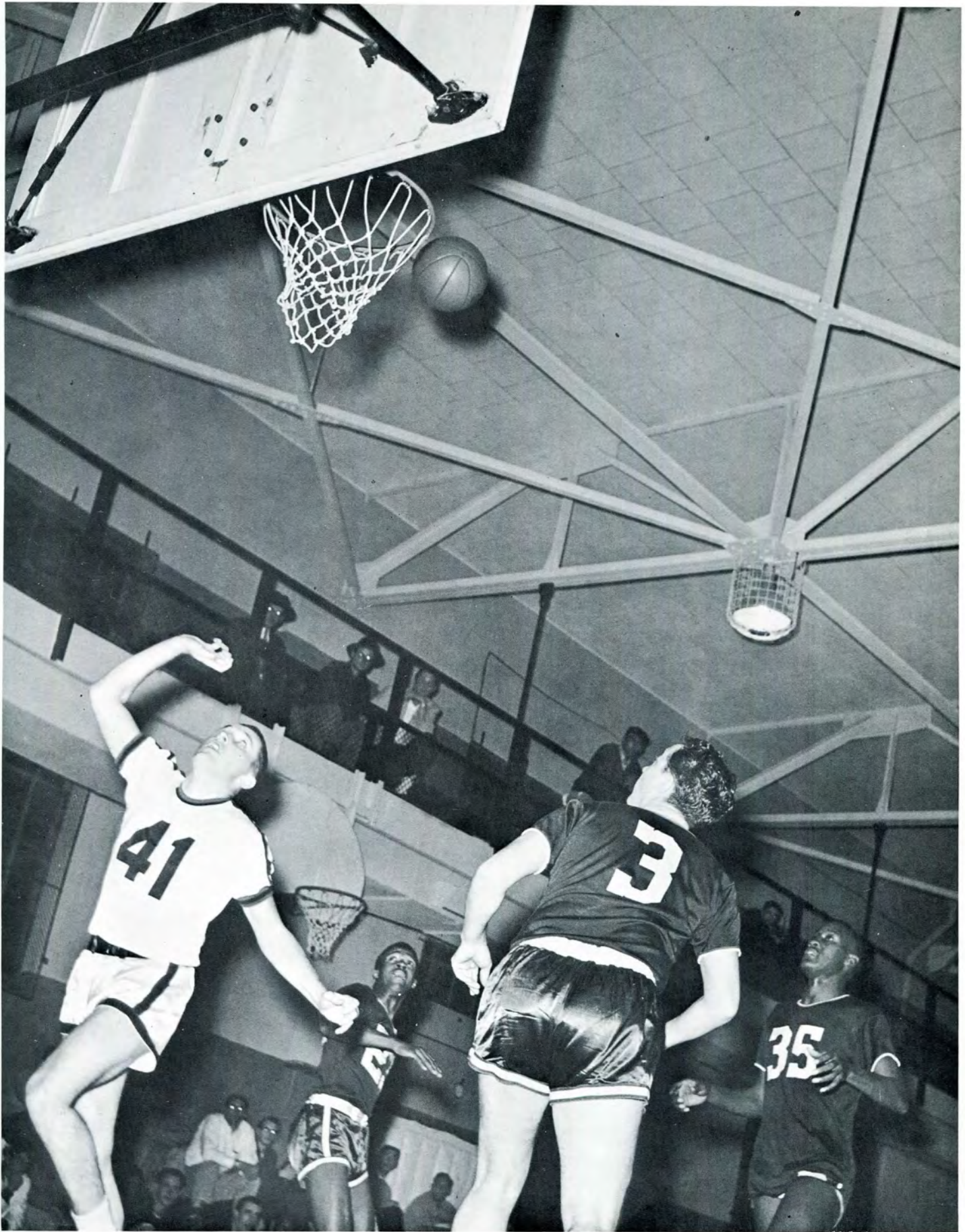
Two Handed Deal



Sylvester arches one in against the alumni.

What happened?





Tense moments!



Blue Devils in a





during the season.





Bowling Teams

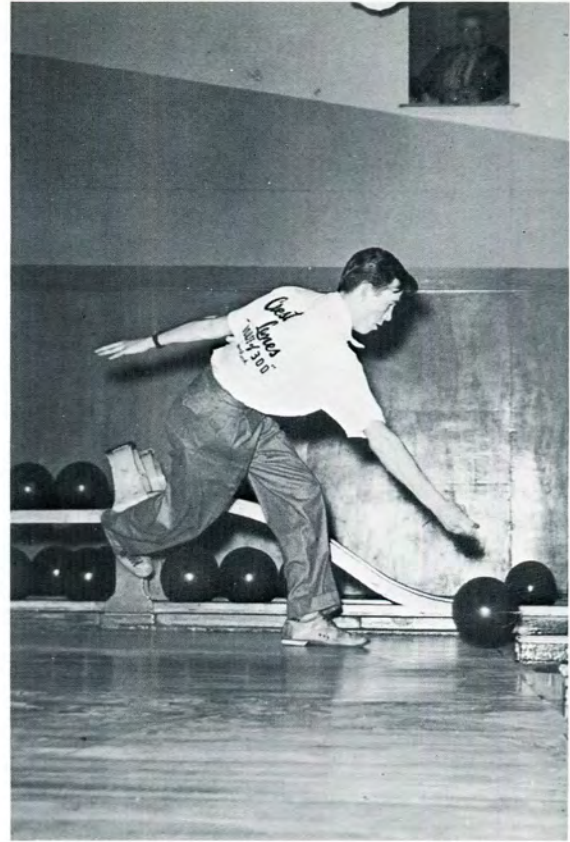


Above is the first team of Buzenski, Moore, Sobson, Sambrook, and Pearl. Below, the second team of Elliott, Kanon, Nieman, Doty, and Cooper.



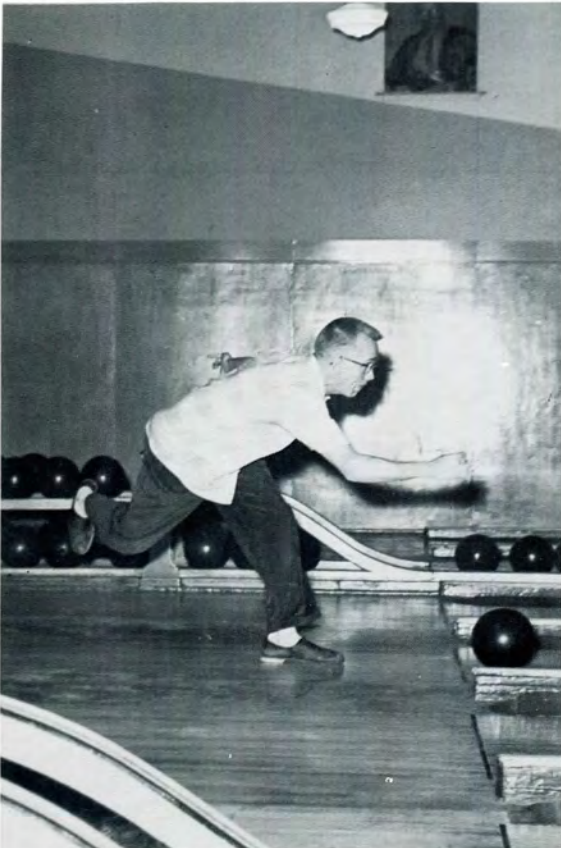


MOORE



SAMBROOK

BUZENSKI



PEARL



Fencing



Standing, Left to Right: J. Gross, F. Kostusyk, R. Konistney, E. Ritenour. Front Row, Left to Right: W. Rupp, R. Shiner, R. Yasenchak, Captain; V. Lefty R. Judge.



Above: Epee Team of R. Yasenchak, R. Shiner and R. Konistney. Below: Foil Team of E. Ritenour, W. Rupp, and F. Kostusyk.





Sabre Team of J. Gross, R. Judge, and V. Lefty.



Action shots during practice.



Fraternities



Lambda Iota Tau



Day school members are, *Left to Right*: Gerald Brines, Robert Urquhart, and Joe Fleshner. Missing is Richard Stewart.

The Lambda Iota Tau Honor Award was founded by Dean Russel Lawrence in 1934, only two years after he had founded Lawrence Tech.

The key of this honor society is presented each year to those students who stand out above average in activities and grades. These men combine a high standard of scholarship, with an active interest in extra-curricular activities. Since the founding of Lambda Iota Tau, its key has become the most coveted of awards.



Night school members are, *Left to Right*: Nick De Marco, Ken Driver, and Richard Exler.

Inter-Fraternity Council



Seated, Left to Right: J. Judge, P.K.U.; D. Mulrenin, Chairman, K.P.S.; J. Parker, A.G.U. Standing, Left to Right: S. Seiner, K.S.K.; G. Gast, R.D.P.; R. Simbutger, P.K.U.

Realizing that all fraternities on campus were basically formed for the betterment of high ideals at Lawrence Tech, a council composed of representatives from the five fraternities was formed to correlate certain activities and interests for their mutual benefit.

One of the primary functions of the council is to screen all pledge candidates for scholarship requirements necessary for application to anyone of the five fraternities on campus. Regulation of the opening dates of the rushing season are also controlled by the council. During the school year the social calendar dates of each fraternity are supervised to discourage conflicts.

The Chairmanship of the council rotates annually and during the past school year Donald Mulrenin of Kappa Phi Sigma Fraternity acted as chairman.

Alpha Gamma Upsilon



Seated, Left to Right: H. Barnett, Vice-President; J. Kourtjian, President; H. Nace, Faculty Advisor;
Standing: S. Sajewski, Secretary; J. Parker, Treasurer.

Since its formation in 1933 as the fifth chapter of Alpha Gamma Upsilon, the Epsilon chapter has been a driving force in the growth of Lawrence Tech. In 1937, the chapter became the first fraternity on campus to have its own house, which it retained until World War II. It became a regular supplier of Student Council officers and representatives in the various organizations at LIT. Epsilon was instrumental in the formation of the Inter-Fraternity Council and has always had its members on Tech's athletic teams.

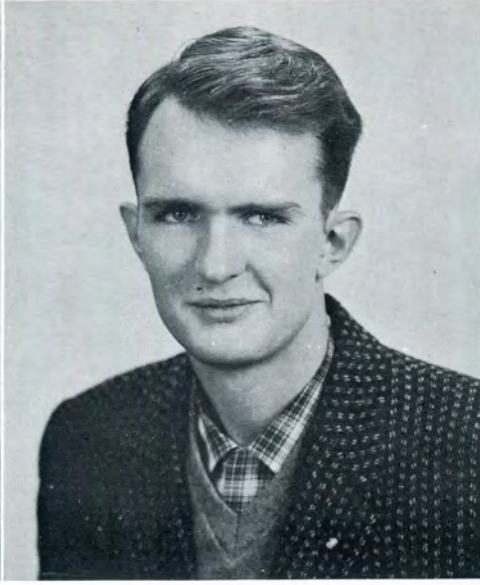
Nationally, Alpha Gamma Upsilon is one of the fastest growing fraternities in the country. It achieved national status in 1949 and has since expanded from the Midwest into the East with more expansion imminent.

This year saw the introduction of Epsilon's "Winter Waltz," a very successful dance, which was held in January. The success of the event has established it as an annual affair, and one of the highlights of Tech's social season.

With an ever-increasing membership and the formation of an alumni chapter, as well as the backing of such projects as the "Winter Waltz," Epsilon can look forward to an age of progress and prosperity.



H. Barnett



G. Brewer



R. Brosey



P. Bucci



K. Edwards



K. Grimm



G. Hardy



M. Hofmann



E. Jankowski



J. Kourtjian



R. Marbrey



R. Miller



J. Parker



A. Polisano



J. Prosser



W. Rankin



W. Rupp



S. Sajewski



R. Schueller



G. Shelton



G. Youschuk



Groups of the large turnout at the semi-annual pledgemixer.





The happy groups toast
. . . and sing?





Some eat . . . others play cards.



Kappa Phi Sigma



Standing, Left to Right: J. Montgomery, Recording Secretary; R. Shiner, Corresponding Secretary; W. Shaver, Pledgemaster; W. Burke, Faculty Advisor. Seated, Left to Right: W. Phillips, Treasurer; R. Stewart, President; D. Mulrenin, Vice-President.

Kappa Phi Sigma fraternity may be the youngest fraternity in the school but this does not deter its social activities or participation in school functions.

This year has proved to be an outstanding one for Kappa Phi Sigma both socially and financially. It marks the largest drive to raise funds for a fraternity house and the initiating of the policy to hold an annual convention. The fund raising campaign was partially assisted by funds from the 200 club.

This first annual convention was held this year and noted the beginning of a grand event. This convention helps to further promote the over all good will among members. Another big social event which turned out to be a big success was a tile laying party. This helping hand gesture is indigenous to fraternity life.



P. Bush



W. Cornacchini



H. Freigruber



E. Gengenbach



J. Gross



R. Gross



R. Jackson



K. Kuhn



H. Manziara



R. McClusky



J. Montgomery



D. Mulrenin



D. Petrak



W. Phillips



W. Shaver



R. Shiner



R. Stewart



At the Functions

Smiling Jack at the Pledge Mixer
 St. Pat's show
 Supporting President Lawrence's
 Testimonial Dinner
 Strohs Incorporated
 Alone and conniving





REMEMBER

The late John S. Rackway leading the
group in song.
Happy New Year . . .
Hal Haupt's surprise . . .
After the Frosh Fling . . .
Two lost souls . . .



Kappa Sigma Kappa



Seated, Left to Right: R. Barto, Vice-President; J. Pavlik, President; W. Doty, Treasurer. Standing, Left to Right: J. McDonald, Sergeant-at-Arms; L. Reaume, Faculty Advisor.

. The Michigan Beta Chapter of Kappa Sigma Kappa Fraternity was founded at Lawrence Institute of Technology in 1948 by twelve men seeking to develop a spirit of brotherhood and to promote interest in social and scholastic activities.

Achievement of this goal was obtained by sundry social activities such as the food concession at the Michigan State Fair and the annual Millionaires' Party, which are the prime fund-raising activities. The money earned from these various events were put into the Kappa Sigma Kappa Building Fund which, some day, will be used to build a fraternity house on the proposed "Fraternity Row."

Social events for the year included the Presentation Banquet held at Bill's Northern Inn, weiner roasts, softball games, bowling team, Halloween and New Year's Eve parties.

The spirit of brotherhood and constructive thinking is a valuable integration of Kappa Sigma Kappa and its actions are a function of our fraternity.



R. Barto



W. Doty



J. Pavlak



R. Peller



S. Seiner



J. Strunk

Phi Kappa Upsilon



Standing, Left to Right: R. Kluba, Warden; R. Simburger, Master of Ritual; Doctor E. Graffee, Faculty Advisor; D. Nakoneczny, Treasurer; G. Klees, Chaplain. *Seated, Left to Right:* W. Levon, Secretary; T. Braun, President; D. Fitzsimons, Vice-President.

Phi Kappa Upsilon is represented at Lawrence Tech by Alpha Chapter in night school and by Delta Chapter in day school. Phi Kappa Upsilon, which is the oldest fraternity on campus, was founded August 17, 1932, at the suggestion of the late Dean Russell E. Lawrence, the founder of Lawrence Tech.

This past summer saw many of our members working at our State Fair Stand. In a short-time to come this stand should become a real going outfit.

On April 28, our twenty-third annual Dinner Dance was held at the Hotel Fort Shelby with the music presented by the old favorite Fenby-Carr and his orchestra. More than one hundred and fifty couples took part in this wonderful affair. New Year's Eve found many couples ushering in the new year for Phi Kappa Upsilon. At both the Frosh Fling and the J-Prom were found about twenty-five couples supporting these school functions.

This past school year saw Phi Kappa Upsilon welcome in approximately thirty new members into Delta Chapter and fifteen into Alpha Chapter.

To round out a successful year P.K.U. held its convention in Detroit on May 19, with seventy members present to discuss the future plans of P.K.U.



R. Bladowski



E. Borushko



L. Boynes



K. Bratt



T. Braun



W. Burke



L. Burpee



D. Cooper



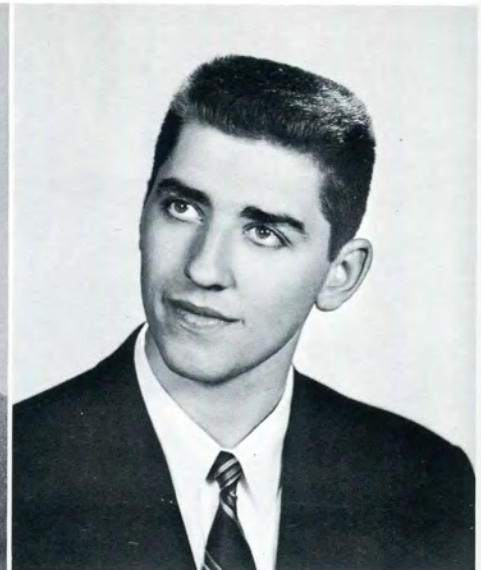
R. Covietz



E. Curme



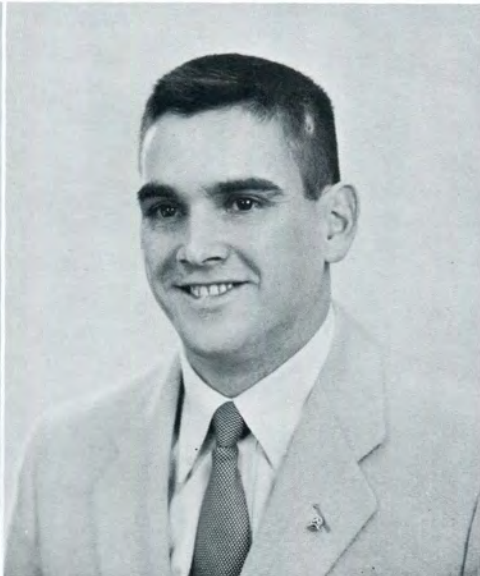
R. Daily



D. DeClerk



N. DeMarco



R. Dickinson



S. Dukes



R. Gendjar



C. Gieldowski



L. Goran



F. Hebenstreit



J. Judge



C. Junker



A. Kazak



T. Keffer



L. Kiselis



R. Konitsney



G. Kotlier



J. Lademan



V. Lefty



W. Levon



R. Masi



S. Mazzola



H. Merle



D. Nakoneczny



V. Patterson



H. Pennartz



J. Petrunak



E. Plante



S. Pochron



D. Polich



M. Richardson



W. Schultz



R. Simburger



R. Solgan



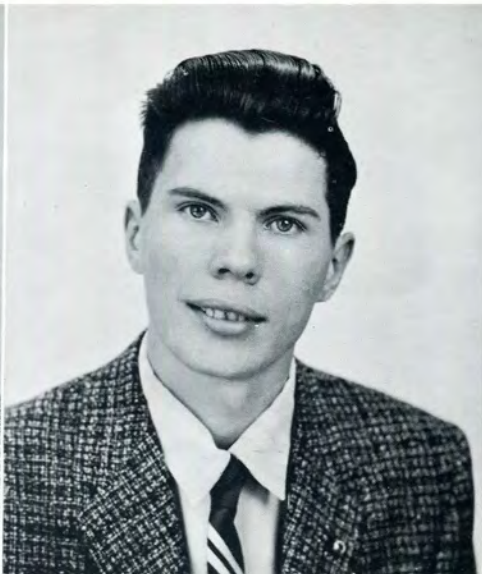
P. Stephens



R. Van Havermaat



J. Waither



K. Wurn



W. Zachary



D. Zinger



Phi Kappa Upsilon's concession stand at the Michigan State Fair.

EVENTS OF THE YEAR

The New Year's Eve Party . . .

The Weiner Roast . . .

Intitation . . .



PLEDGEMIXER

Entertainment . . .

Refreshments . . .

Ping-pong and Cards . . .



Rho Delta Phi



Left to Right: R. Sambrook, Treasurer; G. Andersen, Vice-President; R. Urquhart, Secretary.

"To develop a high standard of morals and character, encourage scholarship, and develop honor and loyalty among the students of the Alma Mater" is the purpose of Rho Delta Phi Fraternity.

In early 1938 sixteen men realized the need for a new social fraternity. With the help of Dean Hendrickson they banded together to form the Alpha Chapter of Rho Delta Phi Fraternity in November, 1938. Many hours into weeks were spent planning and organizing the constitution, the pledge manual, and the pledge season. March 5, 1939, marked the official inception of Rho Delta Phi as fourteen charter members received their pins and certificates. Later the Fraternity formed additional Beta and Alpha-Omega Chapters for day school and alumnae members respectively.

Members have always been active in school activities since the beginning of the Fraternity. As an example, this year the editors of the Tech News and the L-Book are Brothers Joe Fleshner and Gary Gast.

Throughout the year there have been many successful social functions, both stag and drag.



G. Andersen



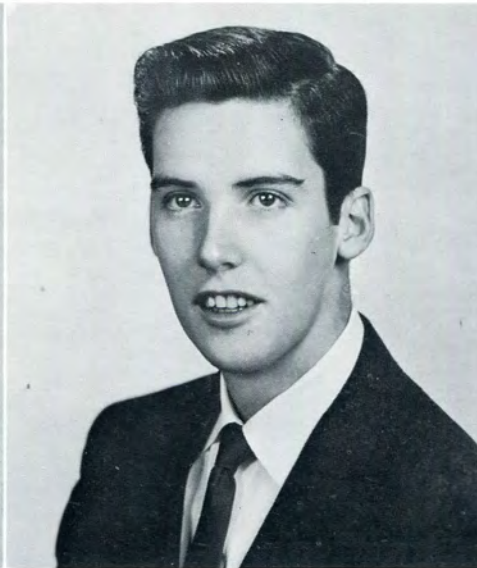
W. Boyd



J. Fleshner



D. Galbraith



G. Gast



M. Goldberg



G. Gravila



H. Quandt



R. Sambrook



D. Schaening



R. Smith



L. Thompson



R. Urquhart



Alumni and members enjoying a game of bluff at the semi-annual Pledge-mixer held at Brother Rod Sambrook's house.



Misspent youth?

He who hesitates,
is lost . . .



Who me?



Presentation Dinner

Dinner . . .

Movies . . .

Small talk . . .



Sigma Kappa Phi



Left to Right: R. Evancho, Pledgemaster; T. Spadafore, Vice-President; R. Green, President, J. Postlethwaite, Secretary-Treasurer.

In its comparatively young life, Sigma Kappa Psi Fraternity has kept pace with the changing scene and progress of Lawrence Tech. At the time of Sigma Kappa Psi's inception, the Technical Institute was located in the building at Harper and Mt. Elliot. The construction of the Edsel Ford Expressway forced the move to the building on Woodward where the college classes were being held. Then came the move to the beautiful new permanent campus. Sigma Kappa Psi, composed of Technical Institute students, is proud to have been a part of this progress.



C. Allison



A. Bien



R. Evancho



R. Green



J. Huntley



R. Landahl



A. Leisberg



R. Marrone



A. Martinico

Sigma Kappa Phi



Left to Right: R. Evancho, Pledgemaster; T. Spadafore, Vice-President; R. Green, President, J. Postlethwaite, Secretary-Treasurer.

In its comparatively young life, Sigma Kappa Psi Fraternity has kept pace with the changing scene and progress of Lawrence Tech. At the time of Sigma Kappa Psi's inception, the Technical Institute was located in the building at Harper and Mt. Elliot. The construction of the Edsel Ford Expressway forced the move to the building on Woodward where the college classes were being held. Then came the move to the beautiful new permanent campus. Sigma Kappa Psi, composed of Technical Institute students, is proud to have been a part of this progress.



C. Allison



A. Bien



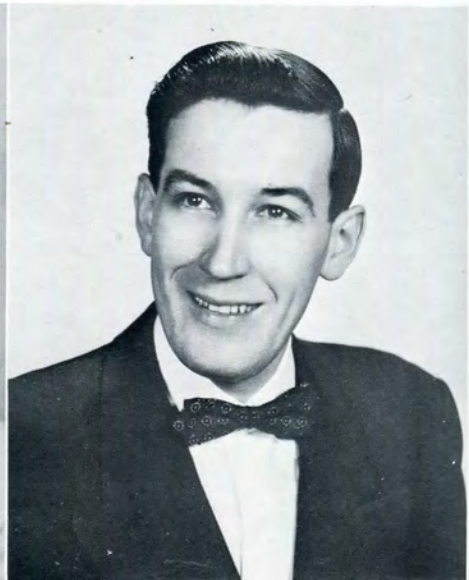
R. Evancho



R. Green



J. Huntley



R. Landahl



A. Leisberg



R. Marrone



A. Martinico



J. Postlethwaite



R. Rowe



J. Scanlon



T. Spadafore



J. Wik

Acknowledgement

Cover Design	G. Gast and M. Katzman
Candid Photography	D. Galbraith
Dedication	M. Katzman
Faculty Advisor	J. Hobson
Technical Advisor	Al Weatherly
Lithographers	Litho Art Incorporated
Portrait Photography	Metropolitan Art Studios
Covers	Becktold Company
Binders	Triangle Bookbinding Company

Editor's Note

Preparing the 1956 edition of the "L-Book" wasn't all fun . . . there were moments of toil, sweat and anxiety. The scheduling of pictures, copy preparation and meeting of deadlines all were but a few of the tasks to be completed. The fact that this issue reached you in time was due to the fine cooperation of all listed above . . . there were others who helped in minor ways, offering encouragement and suggestions, but memory slips their names. To each and everyone who assisted in the least may I express a sincere thanks and that it was perhaps you . . . the forgotten ones . . . that really became the force behind my efforts . . .

GARY GAST,
Editor.

NAVARRE DIE & TOOL CO.

TOOLS — DIES

13864 Elmira

Detroit, Michigan

Congratulations from

I. T. WEDIN CORP.

1221 East 9 Mile Road

Ferndale, Michigan

Courtesy of

ACE TOOL & MACHINE CO.

3801 TRENTON

Detroit 10

Best Wishes

**AUTOMOTIVE
PATTERN CO.**

DETROIT, MICHIGAN

Congratulations

— From —

SCHROEDER MACHINE CO., INC.

DETROIT 3, MICHIGAN

Compliments of

THE READY - POWER CO.

Manufacturers of

GAS-ELECTRIC POWER UNITS
For Electric Industrial Truck Operation

**READY-POWER ENGINE
GENERATORS**
Dependable, Independent Electric Power
For All Purposes

**READY-POWER ENGINED
REFRIGERATION**
Gasoline, Natural Gas, Butane or Diesel Powered
Air Conditioning or Refrigeration

Plants: 3826 Grand River Avenue
and
11231 Freud Avenue, Detroit

Taylor - Thompson Machinery Co.

8095 Livernois Detroit, Michigan

Compliments of

SIEWEK TOOL CO.

2862 EAST GRAND BLVD.

Detroit, Michigan

THE WAYNE OAKLAND BANK

Complete Banking Services

Six Conveniently Located Offices

Royal Oak Highland Park
Berkley Clawson

Member Federal Deposit Insurance Corporation

"I Want to Be Your Milkman"



Townsend 8-5250

9700 Oakland Avenue

Congratulations

Mechanical Engineering Service Co.

21 Henry St.

Detroit, Michigan

GEORGE LEGGATT

R. C. FAIRCHILD

ARMSTRONG STEAM TRAPS, HUMIDIFIERS, GAS PURGERS, JOHNSON STEAM JOINTS, HEATERS, AIR SEPARATORS, SOLENOID VALVES, PUMPS, CONTROLS, METERING PUMPS, SCHADE PRESSURE AND LEVEL REGULATORS.

MERLO Steam Equipment

Successor to A. F. Squier

1506 E. STATE FAIR

DETROIT 26

Twinbrook 1-7005—If no answer call Wo. 3-1233

OFFICIAL CLASS RING JEWELERS
TO LAWRENCE INSTITUTE
Diamonds — Watches — Fine Jewelry

WEYHING BROS. MFG. CO.
JEWELERS

Downtown Salesroom
4th Floor David Broderick Tower

HYDE & BOBBIO

EATON MFG. CO.

MODERN INDUSTRIAL ENG. CO.

Compliments of

WELTRONIC COMPANY

MANUFACTURERS OF RESISTANCE WELDER CONTROLS
and SPECIAL ELECTRONIC CONTROLS

19500 West 8 Mile Rd.

Phone KEnwood 2-2800

DETROIT 19, MICHIGAN

Congratulations Graduates

From

UNISTRUT CORP.

Wayne, Mich.

Manufacturers

National Bank of Detroit

OFFICES IN DETROIT, DEARBORN,
GROSSE POINTE WOODS, HIGHLAND PARK,
MELVINDALE, PLEASANT RIDGE,
REDFORD, VAN DYKE

Banking for Everybody

Member Federal Deposit Insurance Corporation

Investigate The Opportunities For Engineers At

**CARBOLOY DEPARTMENT
of
GENERAL ELECTRIC COMPANY**

DETROIT 32, MICHIGAN

Manufacturer of Created-Metals for Industry



CONGRATULATIONS

Detroit Broach Company

.

Rochester, Michigan

GUSTAV VON REIS, *Pres.*



*Congratulations
from*

**MOHAWK METAL
& TOOL FORMING CORP.**

Dearborn, Mich.

Work with Seasoned Engineers

Long prides itself on its engineering personnel. Their research, development and manufacturing know-how have enabled us to lead the field with new automotive and air conditioning products.

We're always looking for talented young engineers to train with our skilled staff. The future in heat exchangers, drive-line units, clutches and torque converters offers great opportunity. If you want to get in on it, if you'd like to use extensive engineering facilities—come in and talk it over with us.



**LONG MANUFACTURING DIV., BORG-WARNER
12501 Dequindre Street • Detroit, Mich.**

Compliments of

DIE INDUSTRIES INC.

595 E. 10 MILE RD.

Hazel Park, Mich.

COMPLIMENTS OF

**HOWARD-ELECTRIC
COMPANY**

- DETROIT -

R. H. McMANUS & CO.

CONTRACTING ENGINEERS

DETROIT
CINCINNATI
PEORIA, ILL.

ENTERPRISE MACHINE PARTS CORP.

"Tool Makers Since 1920"

Home of Empco Products

2731 Jerome

Twinbrook 1-7900

Detroit Electric Hoists are built in capacities of $\frac{1}{4}$ to 15 tons. They are made in various designs for practically every kind of material handling problem.

Ask for illustrated Bulletin with interesting information on many types of Detroit Electric Hoists.

DETROIT HOIST & MACHINE CO.

EST. 1905

8222 MORROW ST., DETROIT, MICH.

*Also Manufacturers of
Air Hoists and Cranes*

KEUFFEL & ESSER COMPANY

EST 1867

Drafting, Reproduction, Surveying
Equipment and Materials

Slide Rules

Measuring Tapes

37 W. Palmer

A Recognized

QUALITY SOURCE

for

- DIES
- TOOLS
- JIGS
- FIXTURES

RICHARD BROTHERS DIV.

ALLIED PRODUCTS CORPORATION

Detroit and Hillsdale

need location
lighting... fast?

*Call on Jack Frost, one of the
nation's largest suppliers of
temporary lighting facilities.*

Wherever you are, whatever your lighting needs, you can depend on Jack Frost's expert handling and complete range of equipment, from a 100 watt inkie to 228 amp arc with mobile power plants. In the studio too, we can supplement your present equipment to meet any situation, anywhere. We've been doing it for years for many of the top shows.

Our service includes complete installation and removal at one low cost.

free estimates

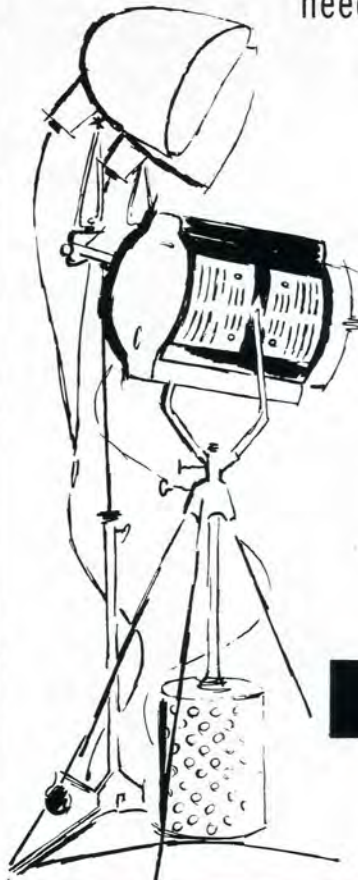
*Write or wire for a free estimate and
a Free Catalog of Equipment.*

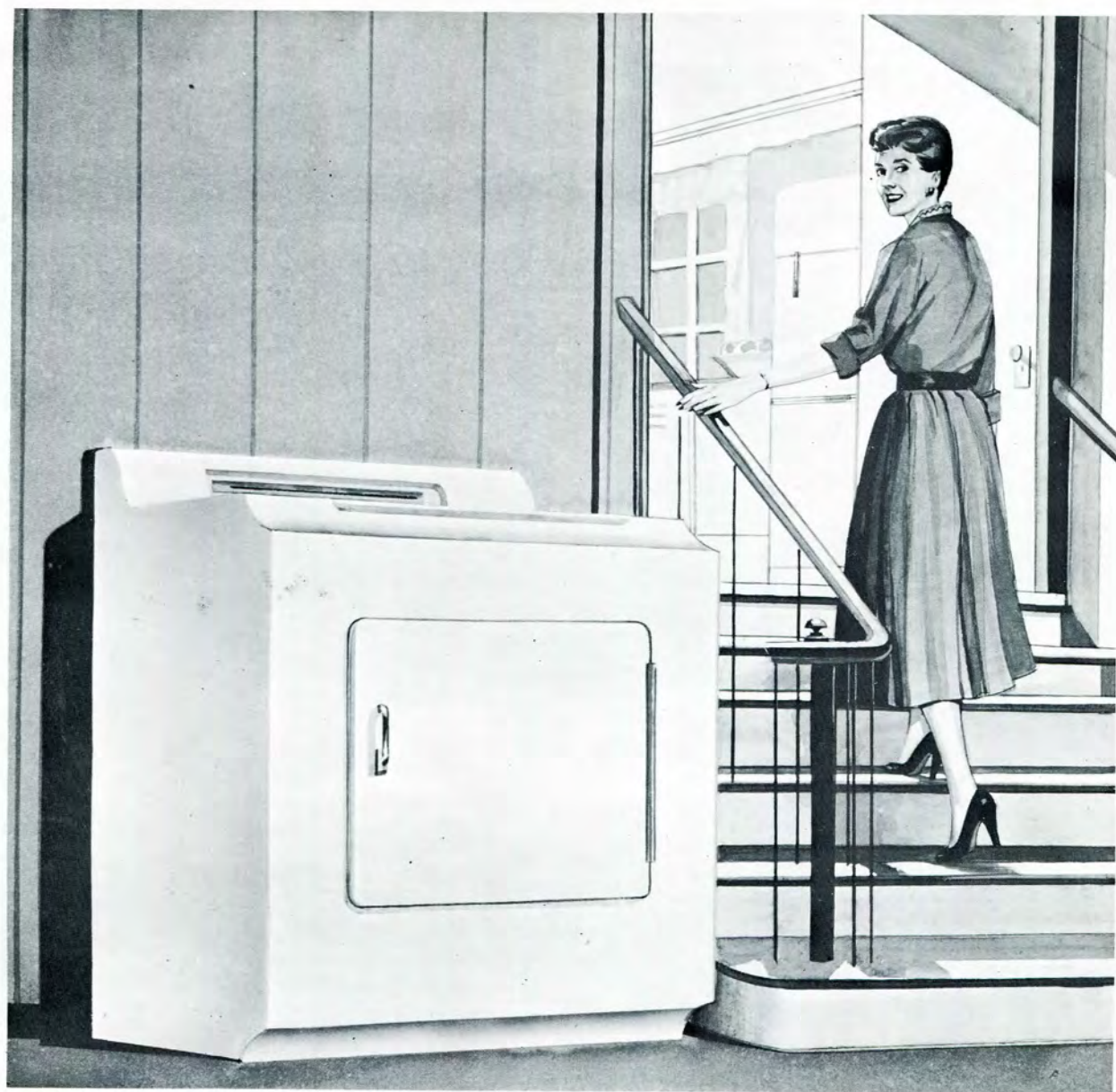
JACK A. FROST

Department TY

234 Piquette Ave., Detroit 2, Michigan

425 Burnamthorpe Road, Toronto 18, Ontario





it's "touch and go" these days

There's little lingering in the laundry anymore. The washing is disposed of the automatic electric way. Set washer or dryer dial and away you go . . . to other jobs . . . even out of the house.

And the interesting thing is, by the time you change from Miss to Mrs., automatic electric work savers will have made your life more than ever "touch-and-go."

DETROIT EDISON

THE *FORWARD* LOOK '56



wraps up the idea of go in one clean front-to-back sweep!

Millions of Americans have now seen the five all-new cars of THE *FORWARD* LOOK '56 — Plymouth, Dodge, De Soto, Chrysler and Imperial.

Their judgment and their hearts tell them: here are cars that must be wonderful to drive, to ride in, to be seen in!

Take a good look yourself. Compare these cars with *any* new cars today—from any standpoint . . . in any price class.

What catches your eye first is THE FLIGHT-SWEEP—the freshest new note in car design. From jutting headlight to crisply upswept tail, this simple, clean line says *power* and *motion*! This is design that borrows from tomorrow!

Look at the people driving these cars, their faces tell you they know they couldn't have made a better choice!

See how they get into "Drive"—*they just press a button* of the new Pushbutton PowerFlite! See how they go—with *the finest new engines*: more powerful, more efficient, more economical. See how smoothly they ride—with an *all-road comfort* in a class by itself. See how easily they stop with *new braking systems* unequaled for sureness and ease. See how effortlessly they steer—with *Safety Touch Power Steering* that works *all* the time, not part time.

You'll see new safety too—for THE *FORWARD* LOOK '56 brings you the best-made bodies and frames . . . new Life-Guard door latches that are the safest you can have around you . . . and Safety Seat Belts, if you wish.

Visit your dealer soon. In THE *FORWARD* LOOK '56 cars you'll discover a new kind of riding and driving pleasure!



CHRYSLER CORPORATION
PLYMOUTH, DODGE, DE SOTO, CHRYSLER, IMPERIAL

See Chrysler Corporation's Great TV Shows, "Shower of Stars" and "Climax!" Thursday nights, CBS-TV

Are You Looking For

A REAL OPPORTUNITY?

- As a young graduate engineer of one of the country's leading engineering schools, you undoubtedly desire to start your professional career with a firm offering a real opportunity to get ahead. Pioneer offers you that opportunity in the industrial engineering field.
- Your desires, naturally, are to obtain a firm start, to get practical engineering experience, to increase your knowledge by working in many phases of engineering, an opportunity to advance to the top rungs.
- As the largest and today the most progressive company in the industrial engineering field, Pioneer offers you all of these.
- A leader in the independent engineering industry since the 1930's, Pioneer has developed its present reputation through its proven capability to handle every detail of the most complete program. Highest calibre production engineers have joined and remained with Pioneer because the firm has eliminated the high peaks and deep valleys of employment by consistently cutting for industry both cost and time of re-tooling, improving of product design and devising of new techniques. At Pioneer variety is substituted for repetitiousness, challenges for stagnation.
- Pioneer officials will be glad to tell you personally of the opportunity they can offer you.



19669 JOHN R STREET

DETROIT 3, MICHIGAN

DARIN &
ARMSTRONG
Inc.

GENERAL CONTRACTORS



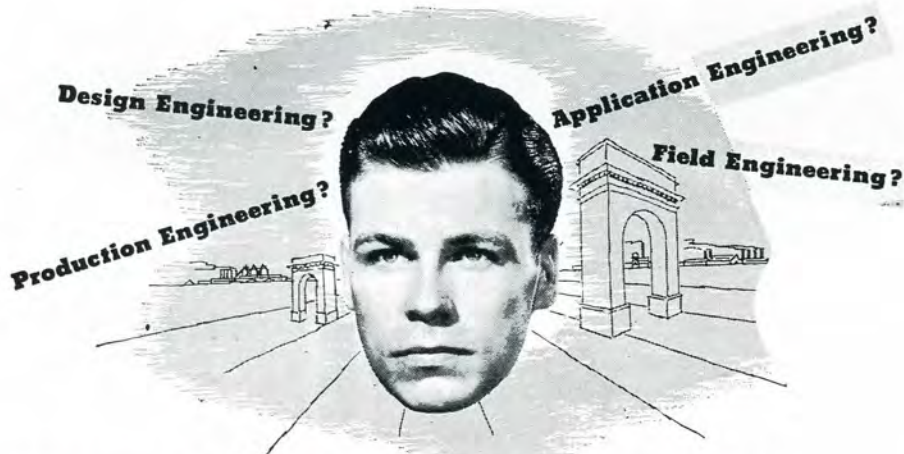
2041 Fenkell

Detroit,

Michigan

HOLLEY
CARBURETOR
CO.

DETROIT, MICHIGAN



Which is *Your* choice for the future?

• It takes all kinds of engineers to design, produce and distribute SQUARE D's broad line of electrical equipment. .

• Throughout its years of expansion Square D's prime source of engineering talent has been schools such as yours. Not only electrical engineers. Mechanical and industrial engineers, too.

Would you like to know more about Square D and the opportunities we offer?



SQUARE D COMPANY

DETROIT

MILWAUKEE

LOS ANGELES

SQUARE D COMPANY CANADA LTD., TORONTO • SQUARE D de MEXICO, S. A., MEXICO CITY, D. F.

Best Wishes

**DISTEL
TOOL & MACHINE CO.**

2585 Beaufait

WA. 1-3071

Detroit, Mich.

Congratulations

from

**WAYNE FOUNDRY &
STAMPING CO.**

Manufacturers of

SHORT RUN AUTOMOTIVE

and

AIRCRAFT STAMPINGS

DETROIT 10, MICH.

Compliments of

**MILLER - SELDON
ELECTRIC CO.**

1930 McGRAW

DETROIT



***Peninsular*
STEEL COMPANY**

TOOL STEELS

PLATE

COLD FINISHED BARS

HOT ROLLED BARS

ALLOY BARS

DRILL RODS

FLAT GROUND DIE STEEL

24401 Groesbeck - P. O. Box 3853

Detroit 5, Michigan

DR. 1-9400

PR. 8-2121

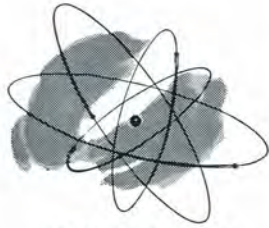
Other Warehouses

Cleveland	-	Toledo	-	Grand Rapids
Akron	-	Chicago	-	Indianapolis
		Dayton	-	Buffalo

12 of the basic industries in which Bendix products play a vital role



ELECTRONICS



ATOMIC ENERGY



AUTOMOTIVE



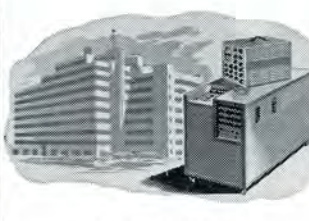
AVIATION



GUIDED MISSILES



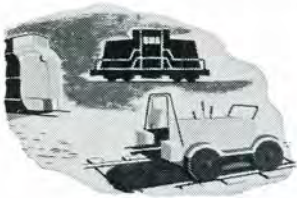
RADAR



COMPUTERS



MARINE



RAILROAD



PETROLEUM



CONSTRUCTION



AGRICULTURE

A SOUND REASON WHY *Bendix* OFFERS TODAY'S ENGINEERING GRADUATE AN UNLIMITED FUTURE!

Diversification is an important asset in business.

Especially so from the viewpoint of the engineer because:

It encourages and promotes freedom of ideas. Keeps engineering ingenuity flexible and adaptable. In short, gives full vent to an engineer's creative ability . . .

While at the same time it provides a healthy, stable, secure foundation for both the company and the individual to build and expand.

If diversification in business appeals to you as a graduate engineer, you'll be greatly interested in the Bendix Aviation Corporation.

For Bendix is unlike any other company in America in its versatility, facilities, experience, range of products and different fields of engineering endeavor. Nearly a

thousand different products are produced by our 24 manufacturing divisions.

As a result, we not only offer a wide choice of locations coast to coast but also career-building opportunities as broad as your ambition and ability in mechanical engineering . . . hydraulic mechanisms . . . electronics . . . magnetics . . . computers . . . servo-mechanisms . . . radar research . . . metallurgy . . . solid-state physics . . . instrumentation . . . radiation detection . . . nuclear physics . . . guidance and control systems plus many more engineering fields of challenge.

Write for your copy of "Bendix and Your Future." It gives the full story about Bendix, its products and employment opportunities.

BENDIX AVIATION CORPORATION

Fisher Building • Detroit 2, Michigan



BRUCE PRODUCTS CORPORATION

Manufacturers

Buffing Compositions—Buff & Polishing Wheels

Drawing Lubricants — Grinding Compounds

Spray Booth Coating — Non-Rust Oils

Soldering and Tinning Fluxes

Trade BRUKO Mark



Detroit Sales Office

Plant & Gen. Offices

6519 Grand River

Howell, Mich.

TY. 6-4594

1090

Manufacturers of

AIRCRAFT AND AUTOMOTIVE

PARTS

THOMPSON PRODUCTS, Inc.

Factories in Cleveland, Detroit and Los Angeles

Subsidiaries—

Thompson Aircraft Products Co., Euclid Ohio

Toledo Steel Products Co., Toledo, Ohio

Thompson Products, Ltd., St. Catharines, Ont.

Best Wishes

CHICAGO RAWHIDE

MANUFACTURING CO.

Compliments of

**ZENI-MAGUIRE
COMPANY**

MECHANICAL ENGINEERS

12216 Woodrow Wilson

TO 8-3070

Detroit, Mich.

COMPLIMENTS OF

French Electric Co.

— ELECTRICAL CONTRACTOR —



9328 CHALMERS

DR. 1-9100

DETROIT, MICHIGAN

Congratulations

LAWRENCE INSTITUTE OF TECHNOLOGY

Compliments

DETROIT REAMER & TOOL COMPANY

SPAULDING ELECTRIC COMPANY

Power Apparatus Specialists

Application — Installation — Maintenance
Repair — Motors — Generators — Transformers
Switchgear — Substations — Speed Reducers
Couplings

1350 Michigan Ave. Woodward 2-6200

DETROIT 26, MICHIGAN

Compliments of

J. C. WESTPHAL Company



DETROIT, MICHIGAN

AJAX STEEL & FORGE CO.

•
FORGINGS
•

205 Adair

Lorain 7-0755

INDUSTRIAL WIRE CLOTH PRODUCTS CORP.

•
*INDUSTRIAL WIRE CLOTH
PRODUCTS*
•

3927 FOURTH ST. WAYNE, MICHIGAN

KOESTLIN TOOL & DIE CORP.

STAMPING SPECIALISTS

NO WORK TOO LARGE



Complete Body Die Facilities



Humboldt and Magnolia Aves.

TA. 5-1490

Success
To The Graduates
From

LAMINA-DIES & TOOLS

INCORPORATED

BERKLEY

MICHIGAN

THE STANDARD TUBE CO.

“STANDARD”

ROUND, SQUARE AND SPECIAL SHAPE

Welded and Butted Steel Tubing

Fabricated Tubular Parts

Upset Tubes and Forgings

Stainless Steel Tubing

24400 Plymouth Road

KEenwood 1-9300

Detroit 39, Mich.

Have You An Assembly Problem?

**LET OUR
SPECIALISTS
HELP YOU**

Are you still using slow uphill hand methods that keep your assembly department in low gear and labor costs in high? Discard them and get on to the rapid straight-away of speedy, inexpensive production offered by D.P.S. power-driven machines.

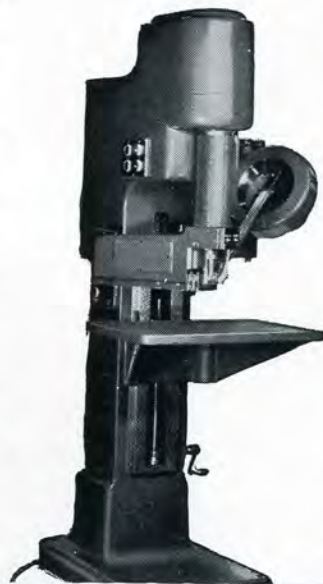


DETROIT POWER SCREWDRIVERS

Drive screws as fast as one a second—all types of screws—no marring of heads or stripping threads—all screws driven to uniform tension—Hopper-fed—SCREWS ALWAYS IN SIGHT OF OPERATOR—3 models, one to fit your requirements.

SPECIAL ASSEMBLING MACHINES

For light assembly operations using Hopper Units to feed component parts.



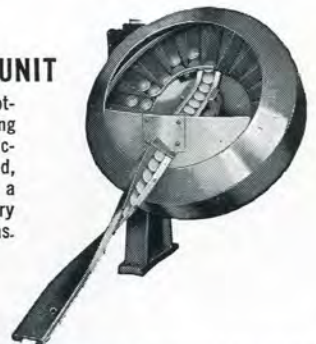
DETROIT POWER NUT DRIVER

A revolutionary new machine that drives nuts with amazing speed, either semi-automatically, or it can be adapted to full automatic operation entirely eliminating the manual handling of nuts. Capacity: nuts, $\frac{3}{16}$ " min. to $\frac{1}{4}$ " max. across flats.

THE HOPPER UNIT

Motorized—Highly Adaptable—A selective feeding device whereby production parts are selected, oriented and fed in a given position for primary and secondary operations.

*Write for
Catalog*



DETROIT POWER SCREWDRIVER CO.

2797 W. FORT ST.
DETROIT 16, MICH.

THE CHAS. A.
STRELINGER
CO.

149 E. Larned St. Detroit 26, Mich.
WO. 2-7474

MACHINE TOOLS
(Metal Working Machinery)

CUTTING TOOLS

INDUSTRIAL SUPPLIES

"ACE" Drill Jig Bushings
"BOSTON" Gears, Sprockets, Speed Reducers,
Ratiomotors
"Bost-Bronz" Bearings
"MORSE" Drills, Reamers, Taps, Dies
"BLACK & DECKER" Electric Tools
"YALE" Hoists—Electric and Hand
"DODGE" Power Transmission Equipment
"MINNESOTA MINING & MFG. CO. 3M
Abrasives and Industrial Tapes
"SIMONDS ABRASIVE CO." Grinding Wheels
"CARBOLOY" Tools
"ARMSTRONG" Wrenches, Lathe Tools, Tool Bits
"BERYLCO" Beryllium Copper Non-Sparking Tools
"SCHRADER" Air Control Products

Serving Industry Since 1884

Chas. T. Bush - President



Executive Jobs For Engineers

Bell Telephone companies pick many of their top executives from among their engineers. More than half the Presidents of all Bell companies have engineering degrees—as does the President of the American Telephone and Telegraph Company.

What kind of engineering interests you most as a life work? Michigan Bell has unusual opportunities for engineering abilities of every type . . . well-paid, satisfying, permanent jobs in the rapidly-growing field of communications.

Find out today about your Future Unlimited from your Placement Office, or call WOODWARD 3-9900, Ext. 541.

SCHURRER CONSTRUCTION CO.

BUILDING CONTRACTOR

Pontiac - Michigan



**MICHIGAN BELL
TELEPHONE COMPANY**

Best Wishes

MARTIN ELECTRIC CO.

3040 E. Outer Drive TW. 2-2285

Detroit, Michigan

**ROYAL OAK
TOOL & MACHINE CO.**



TOOLS - DIES - JIG AND FIXTURE
SPECIALIST

Manufacturers of J. S. Radial Relief Grinders



29800 Stephenson Highway

Royal Oak, Michigan

H. A. MONTGOMERY CO.

Manufacturing Chemists

17191 SWIFT

Detroit, Michigan U. S. A.

The Wayne Way

GOOD PRODUCTS PLUS GOOD SERVICE

Metal Working Lubricants
Rust Preventives
Paste Solders
Chemical Specialties

**Wayne Chemical Products
Company**

Established 1899

Copeland Street & M. C. R. R.

Detroit 17, Michigan



Congratulations L. I. T.

**MICHIGAN TOOL
COMPANY**

7171 East McNichols Road

Detroit, Mich., U. S. A.



Congratulations . . . L. I. T. !

from

DETROIT MOLD ENGINEERING CO.

Originators and Manufacturers of

Standard Mold Bases for

Plastic Molding & Die Casting

Metal Working Machinery

**RIORDAN
MACHINERY
COMPANY**



213 Curtis Building

Detroit 2

Congratulations
L. I. T.
from

HAMILL ELECTRIC CO.

Detroit, Michigan

CONGRATULATIONS!!

TO THE

FACULTY AND STUDENT BODY

OF

LAWRENCE INSTITUTE OF TECHNOLOGY

ANCHOR STEEL AND CONVEYOR COMPANY » »

DESIGNERS • MANUFACTURERS
6908 KINGSLEY AVE. • DEARBORN, MICHIGAN



STUDENTS

Many members of your alumni, as outstanding American citizens, have set high standards in a profession which has done so much to make this country of ours a world leader.

We need more and more engineers like that who can think straight and act vigorously to keep American the land of opportunity.

You gentlemen have the equipment for that leadership. We are depending on YOU.



NATIONAL BROACH & MACHINE CO.

5600 St. Jean

Detroit, Mich.

N. I. TIMCO

Member L. I. T. Alumni



DeLUXE DIE WORKS

20201 HOOVER ROAD

DETROIT, MICHIGAN

CONGRATULATIONS, GRADUATES

from

Danly Machine Specialties, Inc.

1549 Temple Avenue

Detroit 16, Michigan

WOodward 3-6666

DIE SETS — NEW FEATURES

DIE MAKERS' SUPPLIES

NEW and IMPROVED LINE OF DIE SPRINGS

NEW STOCK GUIDES FOR DIES

PUNCH PRESSES

*Be Sure Always Set Dies in Danly Die Sets
and Run in Danly Presses*

Congratulations to

Lawrence Tech on past achievements and

best wishes for future success

ECLIPSE COUNTERBORE CO.

MANUFACTURERS OF FINE END
CUTTING TOOLS

1600 Bonner Avenue

Detroit 20, Michigan

COMPLIMENTS OF

WOLVERINE TUBE

Division of
CALUMET & HECLA, INC.
1411 Central
Detroit 9, Michigan

CONGRATULATIONS

The Peninsular Grinding Wheel Division
Of Abrasive & Metal Prod. Co.

A Michigan Corporation

*Engineers—Save by
Standardizing on*



**FIXTURE CLAMPS
AND COMPONENTS**

15 STYLES
CLAMPS

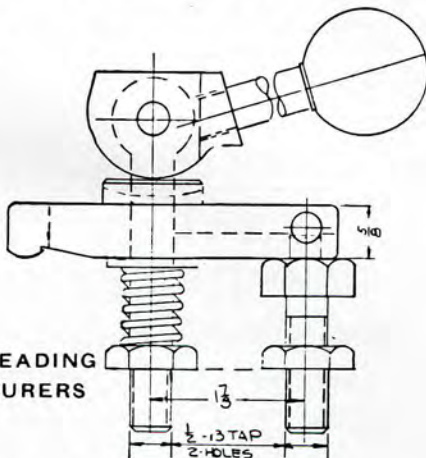
100
SIZES

* * *

OVER
350
FIXTURE
PARTS

* * *

USED BY LEADING
MANUFACTURERS
IN U. S. A.



WEST POINT MFG. CO.
26935 W. 7 Mile Rd., Detroit 19, Michigan

Detroit Stamping Company

Established 1915

MANUFACTURERS OF
**Pressed Metal
Parts and Products**
Medium Size and Smaller Stampings
"DE-STA-CO" Toggle Clamps
Arbor Spacers, Shims,
Packaged Shim Stock

350 MIDLAND AVENUE
Highland Park Station
DETROIT 3, MICHIGAN

Townsend 8-5080

W. T. ANDREW CO.

PLUMBING SUPPLIES

15815 Hamilton Ave. Highland Park, 3, Mich.

TUlsa 3-2000

Industrial City Boring Co.

EXTRUSTION TOOLS

JIGS, FIXTURES AND GAGES

11474 E. 9 Mile Road

Van Dyke, Michigan

Steel City Testing Machines, Inc.

Manufacturers of Machines for Testing
the Physical Properties of Metals

8817 Lyndon

Detroit 38, Michigan

WEbster 3-3500

END MILLS, COUNTERBORES, REAMERS,
FLAT AND DOVE TAIL FORM TOOLS,
CIRCULAR, FORM RELIEVED MILLING
CUTTERS, SPECIAL TOOLS, BOTH IN
CARBIDE AND HIGH SPEED STEEL. (Ask
for Catalog.) SEE OUR POSITIVE, RIGID
T. I. DRIVE.

FALCON TOOL COMPANY

P. O. Box 4605

Detroit 34, Michigan

20771 Ryan Road

INTERNATIONAL

CONVEYOR

& WASHER

CORP.

DETROIT, MICHIGAN

Compliments of

Lawn Equipment Corp.

"EVERYTHING FOR THE LAWN"

518-520 W. 11 Mile Road

Royal Oak, Mich.

LI. 2-1721

SMITH, HINCHMAN & GRYLLS, INC.

ARCHITECTS

800 Marquette Bldg.

Detroit, Michigan

SCHMIEG INDUSTRIES

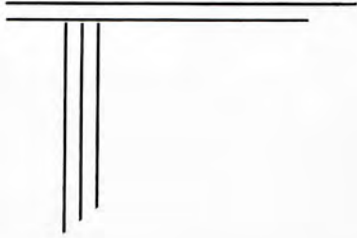
ENGINEERS AND MANUFACTURERS

23930 Sherwood

Centerline, Michigan

Phone JEFFerson 9-1030

Congratulations
On Your Graduation



**Detroit
Electrical
Contractors
Association**

Congratulations

W. BIDDLE WALKER CO.

•
Industrial Contractors
•

4375 SECOND

DUnkirk 2-1500

ECORSE, MICHIGAN

Congratulations

Lawrence Tech.

•

**U. S.
BROACH
CO.**

DETROIT 34, MICH.

•

Best Wishes to All the Graduates

**COMMERCIAL
STEEL TREATING CORPORATION**

Metal Treating Specialists

6100 TIREMAN

DETROIT, MICHIGAN

MICHIGAN DRILLING CO.

Soil Testing and Soil Analysis

**Diamond Drilling in Bed Rock
and in Reinforced Concrete**

13911 PRAIRIE

WE. 3-8717

Detroit, Mich.

CONGRATULATIONS

LAWRENCE TECH.

from

**KELSEY-HAYES
WHEEL CO.**

- DETROIT -



