

the 1949

L Beck



Main Entrance
Lawrence Institute
of
Technology

15100 Woodward Ave., Detroit, Michigan

the 1949

L Beck

Presented by the Graduating Class

— of —

LAWRENCE INSTITUTE OF TECHNOLOGY

DEDICATION

"Education must be lifelong" is the motto of Professor John S. Rackway, genial chairman of the Drawing Department. Always willing, always helpful, always considerate, and always conscientious is "Uncle John," under whose tutelage all students must directly or indirectly come.

Ready to aid every student, "Uncle John" carries an amazing assortment of knowledge and teaching experience under his portentous "belt." Starting his teaching career at the Municipal Engineering School of Berlin, where he later occupied a professor's chair, Professor Rackway fled the inhumanities of the Nazi's to teach the refugee Chinese students in Shanghai. From China he was called in 1940 to teach at Lawrence Tech.

Though amazingly versatile in his knowledge of Mechanics, Strength of Materials, Physics, Engineering Drawing, Music, and Architecture (what he terms "frozen music"), he still finds time to be an active member of various engineering and educational societies in addition to collecting stamps, directing a choir, translating technical German works, studying architectural history and remembering the first and last names of most of his past and present students.

For wit and wisdom, "Uncle John" acknowledges no peer; for his untiring efforts in making us realize the importance of the dictum "to learn is to learn thinking," we, the class of 1949, respectfully and gratefully dedicate this book to Professor John S. Rackway.

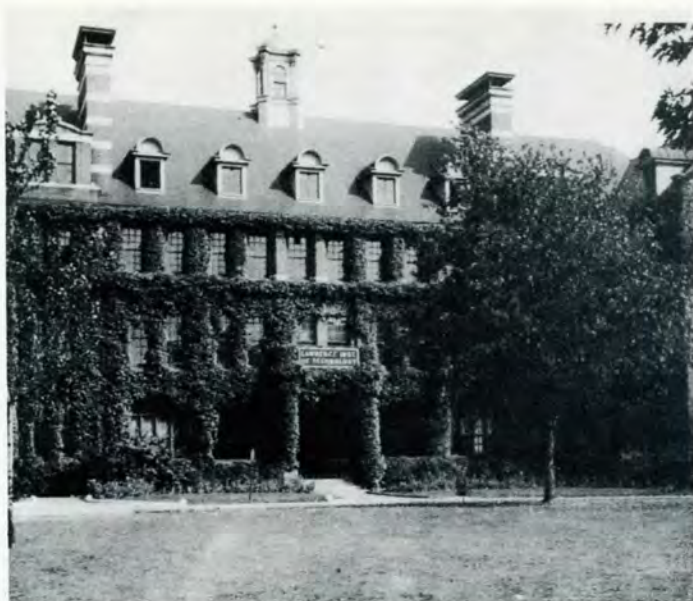


PROFESSOR JOHN S. RACKWAY

FOUNDER



Russell E. Lawrence
1889 - 1934



YESTERDAY,

TODAY,

With the acquisition of a new campus, and the government's endowment of a million dollar building, Lawrence Tech takes on the rightful aspect of the engineering school of tomorrow.

The story of Lawrence Tech is a unique one in the history of the development of engineering schools. Starting in an unpretentious building with a handful of students, the faculty and administration worked day and night to fulfill a *dream*—Lawrence Tech of Today. And the dream was achieved. Students from the four corners of the world now gather in the halls and classrooms in preparation for the educational accolade awarded in graduation. Yesterday and today are realized; Tomorrow awaits.

You, the Graduates of 1949, are the Lawrence Tech of Tomorrow. To you have been given the tasks of tomorrow's achievements. You have been endowed with the golden seeds of yesterday's knowledge. It is your task to make this knowledge blossom forth into the tree of fulfillment. Guard it jealously for it embodies the hopes of the world. Use it well for it is the heritage of your children.

In you is our Tomorrow!

— TOMORROW





TABLE OF CONTENTS

ADMINISTRATION

AND FACULTY

CANDIDATES FOR DEGREES

UNDERGRADUATES

FRATERNITIES

ORGANIZATIONS

SPORTS

The pathway to life and responsibility is paved in three integrated parts: environment, individual, and education. The first two portions are combined and solidified by the time the student enters a school of higher learning. The third is in the formative stage and awaits the final mold and polish that can be added only by those instructors who, by their example, teach us to think independently and to use the tools of knowledge for their final application in our future life. These embody the qualities of the faculty of the Lawrence Institute of Technology.

Thus, what we are upon graduation and what we shall be in our future lives is the example of the devotional ideals of these men. That they have succeeded we know; that we shall uphold the quality of their example is the task set before us.

Therefore, we, the graduates, gratefully take this opportunity to present the faculty and administration of the Lawrence Institute of Technology.

ADMINISTRATION AND FACULTY



PRESIDENT



E. George Lawrence

DEAN OF ENGINEERING



George A. Hendrickson

REGISTRAR AND STAFF



Miss Genevieve Dooley
Registrar



Marion T. Rogers



Violet A. Evanovich



Grace M. Swink

ADMINISTRATIVE AIDE



Philip Marcus

Murrill K. Woolford

STUDENT GUIDANCE



STUDENT COUNSELOR



Edmund W. Jositas

Lawrence E. Long

STUDENT PLACEMENT



PUBLICITY



Richard O. Frederick

Harold B. Van Bussum

PERSONNEL



SECRETARY TO PRESIDENT



Mildred G. Swink

SECRETARY TO DEAN



Jane L. Frederick

SWITCH BOARD



Edalene B. Rink

RECEPTIONIST



Jeanne M. Preston

LIBRARIANS



Margaret Tomkins and Mary Landuyt

BOOK STORE

Alice Woods, Irma Blue,
and Emma Hassinger



VETERANS' OFFICE



Donna Tully and Doris McMenemy

DEPARTMENT HEADS



PROF. LLOYD C. BAGBY
Mathematics
Industrial Eng.



PROF. GAIL P. BREWINGTON
Physics



PROF. HENRY L. BYERLAY
Electrical Eng.



PROF. GERALD P. CONNELL
Chemical Eng.



PROF. HANS G. ERNEMAN
Mechanical Eng.



PROF. EDWIN O. GRAEFFE
Business Adm.



PROF. GEORGE MARTIN
Aeronautical Eng.



PROF. WILLIAM E. MENZEL
Civil Eng.



PROF. EARL W. PELLERIN
Architectural Eng.



PROF. JOHN S. RACKWAY
Engineering Draw'g



PROF. MORDICA M. RYAN
Chemistry



PROF. HERBERT G. WILLIAMS
English

FACULTY

GEORGE G. ALLISON
 CAVINS BAUGHMAN
 HAROLD R. BELL
 ALLEN L. BERNSTEIN



G. R. BINGHAM
 HAROLD G. BOOTHROYD
 THERAN H. BRAY
 MATTHEW BRONER



JAMES BROOKES
 ALBERT F. COLLIER
 DONALD G. DeBRODT
 EDMUND J. DOMBROWSKI



WILLIAM DOWLDING
 CARL M. EINHORN
 RALPH C. EMIG
 JOHN R. FAWCETT



ROBERT H. GARMEZY
 BURTON S. GARRELL
 J. R. GUMP
 MORRIS A. GREENBERG



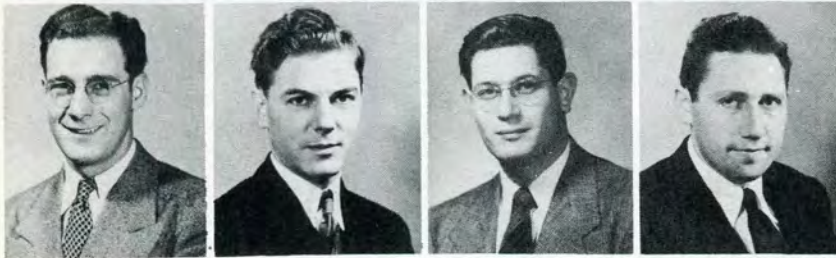
EDWIN I. HAIRE
 ELWYN D. HANCOCK
 RICHARD E. HANSLIP
 ARTHUR D. HART



FACULTY



FRANCIS V. HIGGINS
 JAMES B. HUGHES
 ROBERT J. KAMPHAUS
 JOSEPH A. KECK



GEORGE H. KNIPPLE
 CARL LARIME
 IRVING J. LEVINSON
 HARRY LOBERMAN



CHARLES P. McMILLAN
 ROBERT W. MacKENZIE
 L. MANN, JR.
 ROBERT W. MEDLER



RAYMOND L. MOY
 HENRY W. NACE
 CLEO H. NEVEU
 MILTON G. PARSONS



HAROLD PENN
 THEODORE W. POHRTE
 ALBERT REMDE
 ARTHUR J. REYNOLDS



GEORGE W. SIERANT
 CLARENCE A. STERN
 JOHN B. THOMSON
 J. V. TIERNEY, JR.

FACULTY



JOSE M. TORRES
JAMES L. VAN VLIET
HURST E. J. WULF

FACULTY NOT PICTURED

David H. Burger
William C. Burke
Donald W. Davidson
Emmet J. Donnelly
George Gibson
Joseph Hoste
Alexander M. Karchon
William H. Kelly

Fritz Kramrisch
John G. Locklin
Paul G. Maganus
William Mann
William L. McClurg
James S. McCoy
Foster H. Middleton
Ira Nichol

Russell Noble
Deo F. Reynolds
Doris Smith
Harry O. Warner
Alan Warnick
Maxwell E. Wright
Robert W. Wright

LABORATORY TECHNICIANS



HUGH
ATTO

TONY
PARAFIN

PAUL
RISSMAN

DON C.
ZIEGLER

Registration day in the fall of 1945 was a strange morning in the halls of Lawrence Tech. Greetings and shouts of welcome could be heard all over the school as groups of war-worn veterans came back to the school in which they had started their engineering education. It was strange to be back in a sanctuary of study; it was familiar to them and yet everything was new.

For the next two years, other groups came home and took their places in the class rooms of Lawrence Tech. Here they joined pre-war friends and other classmates, readjusted themselves to students' life, and continuously strove towards the goal which they had set for themselves.

This, in brief, is the story of the men pictured on the following pages. Young men who carried the banner of freedom on the battlefields of the world so that they could practice that ideal in the classrooms of American colleges.

These are the graduates of 1949. Respect them. They have conquered once and they are to conquer again.

CANDIDATES FOR DEGREES



SENIOR CLASS OFFICERS



DAY SCHOOL

President William Dryburgh
 Vice-President Walter Brown
 Secretary Charles Gray
 Treasurer Robert Ruger

Left to Right; Robert Ruger, Charles Gray, Walter Brown, and William Dryburgh.

NIGHT SCHOOL

President..... Edward Tait
 Vice-President..... Walter Johnson
 Secretary-Treasurer...Therese Shepard
 Comm. Chairman.....George Brenz



Left to Right; George Brenz, Walter Johnson, Therese Shepard, and Edward Tait.

CANDIDATES FOR DEGREES



ADAMS, WILLIAM J., B.S.A.E.
Rho Delta Phi



AHLAND, WALTER, B.S.C.E.
Phi Kappa Upsilon



ANDRE, ALEXANDER R.,
B.S.M.E.
S.A.E.
AERO CLUB



APODACA, MAX, B.S.E.E.

Don Bolle passes on the word in one of the many sessions held in the cafeteria between classes. Listening intently are (left to right) Irv Rudolph, James Timm, Elvin Gerard, Ben Mason and Earl Bishop.



CANDIDATES FOR DEGREES



AUDRETSCH, L. MARTIN,
B.S.M.E.

Radio Club

BARBOUR, CHARLES R.
B.S.M.E.

S.A.E.



BARNOWSKE, ROBERT H.,
B.S.E.E.

S.A.E.

BAZYLEWICZ, WALTER,
B.S.B.A.

A.S.I.E.
Varsity Club—Pres.
Football—Capt.
Basketball
Track
Athletic Award—1947
Frosh Basketball Coach
Tech News Staff
Sports Editor—L-Book

BEAMISH, JOHN M., B.S.Ch.E.

Vice-Pres. Soph. Class
Student Council
Senior Social Committee
A.C.S.
L-Book Staff
Basketball

BEHM, DONALD H., B.S.Ch.E.

Phi Kappa Upsilon
A.C.S.



BELSKY, ARNOLD, B.S.M.E.

BIELAWSKI, WALTER J.,
B.S.M.E.

Alpha Gamma Upsilon
S.A.E.
Rifle Team
Varsity Club



CANDIDATES FOR DEGREES



BISHOP, E. EARL, B.S.E.E.

BLANK, MARSHALL A.,
B.S.C.E.
Astronomy Club—Pres.
Lawrence Lensmen
C.E.S.



BLODGETT, ALVAH H.,
B.S.Ch.E.

BLOETSCHER, DOUGLAS K.,
B.S.A.E.

BOLAND, RUSSELL, B.S.I.E.

Phi Kappa Upsilon

BOLLE, DONALD R., B.S.E.E.

Student Council—Vice-Pres.
Vice-Pres. Junior Class
Rho Delta Phi—Treas.



BOSKER, DONALD C., B.S.M.E.

Rho Delta Phi

BOUNKER, JOHN C., B.S.Ch.E.

Student Council
Phi Kappa Upsilon—Sec.
Bus. Mgr. Tech News
Co-Editor Tech News



CANDIDATES FOR DEGREES



BOUTIN, NORMAN M., B.S.A.E

Baseball
Varsity Club

BOWLING, LEE E., B.S.M.E.

Phi Kappa Upsilon



BOWSER ROBERT W., B.S.E.E.

Senior Social Committee

BOYD, RALPH A., B.S.Ch.E.

A.C.S.—Pres.

BRENZ, GEORGE, B.S.M.E.

BREWIN, BRUCE A., B.S.E.E.

Rho Delta Phi



**BROWN, WALTER W.,
B.S.Ae.E.**

Student Council—Cor. Sec.
Vice-Pres. Senior Class
Kappa Sigma Kappa
I.F.C. Representative
I.A.S.

BURCH, ROBERT M., B.S.I.E.

A.S.I.E.
S.A.E.



CANDIDATES FOR DEGREES



BYLUND, JOHN, B.S.I.E.

Treas. Soph. Class
Phi Kappa Upsilon
A.S.I.E.

CAMPOLI, JAMES A., B.S.I.E.

Fencing Coach
Tech News Staff
S.A.E.



CANEVER, CLIFFORD J.,
B.S.E.E.

Rho Delta Phi

CARDWELL, LAMPTON J.,
B.S.M.E.

Rho Delta Phi

CHAMBERS, RUSSELL, JR.,
B.S.A.E.

Kappa Sigma Kappa
I.A.S.
Glider Club

CHANDLER, JACK, B.S.M.E.

Phi Kappa Upsilon
S.A.E.

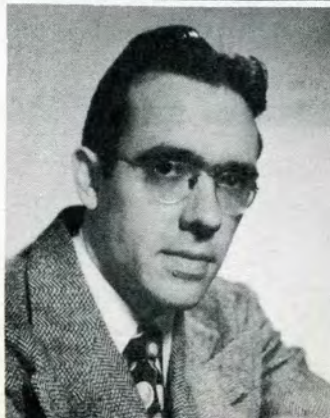


CHARBONNEAU, HARVEY C.,
B.S.I.E.

Sec. Soph. Class
A.S.I.E.
S.A.E.

CHAYIE, WILLIAM D., B.S.I.E.

A.S.I.E.
S.A.E.



CANDIDATES FOR DEGREES



CHESTER, EDWARD B.,
B.S.E.E.
Lambda Iota Tau
Phi Kappa Upsilon
Man. Editor—Tech News
I.F.C. Representatives
I.R.E.

CHIROTA, WILLIAM W.,
B.S.E.E.
Student Council
Kappa Sigma Kappa
S.A.E.



CHURCHILL, CHARLES E.,
B.S.M.E.

CLARK, LLOYD E., B.S.M.E.
S.A.E.

CONROY, THOMAS R., B.S.M.E.
S.A.E.

COOK, WILLIAM E., B.S.I.E.
Rho Delta Phi
S.A.E.
A.S.I.E.
Basketball
Baseball



CORBETT, JOHN T., B.S.E.E.
Phi Kappa Upsilon

DABICH, SAM, B.S.M.E.
Lambda Iota Tau
Senior Planning Committee
S.A.E.
L-Book Assoc. Editor



CANDIDATES FOR DEGREES



DADDOW, JOHN L., B.S.M.E.

Rho Delta Phi
S.A.E.
A.S.I.E.

D'AGOSTINO, PHILIP D.,
B.S.M.E.

Alpha Gamma Upsilon
S.A.E.
Camera Club



DAILEY, ROBERT W., B.S.E.E.

Lambda Iota Tau
Student Council—Sec.
Pres. Soph. Class
Kappa Sigma Kappa—Sec.
S.A.E.
A.S.I.E.
Tech News Staff

DATE, DONALD W., B.S.A.E.

Arch. Club

DAVIDSON, ROBERT E.,
B.S.M.E.

S.A.E.

DEAN, DOUGLAS C., B.S.M.E.

Phi Kappa Upsilon
I.F.C.



DELLER, STANLEY C., B.S.I.E.

S.A.E.
A.S.I.E.
A.S.M.E.

DENZIN, PAUL W., B.S.E.E.



CANDIDATES FOR DEGREES

ELY, FRED C., B.S.A.E.

Phi Kappa Upsilon—Pres.
Arch. Club



EMERSON, JAMES O., B.S.I.E.

Kappa Sigma Kappa
A.S.I.E.
S.A.E.



FALLEN, HARVEY, B.S.M.E.

S.A.E.



FENNER, JAMES H., B.S.M.E.

S.A.E.



Mr. Hancock of the Electrical Engineering Department gives some Electrical seniors a few tips before they run a test on one of the various dynamometers.

CANDIDATES FOR DEGREES



FORD, WILLIAM W., B.S.M.E.

GAITHER, HARRY C., B.S.M.E.



GARDNER, BENNETT R., B.S.M.E.

B.S.M.E.
Football

GATES, LYNA L., B.S.M.E.

GERARD, ELVIN E., B.S.E.E.
S.A.E.

GERIN, LEONARD H., B.S.M.E.
Phi Kappa Upsilon
S.A.E.



GOLIA, FLORIAN M., B.S.E.E.

Student Council
Phi Kappa Upsilon
I.R.E.
A.S.I.E.

GOULASARIAN, JOHN.,
B.S.M.E.
Lambda Iota Tau
Treas. Freshman Class
S.A.E.
Varsity Club
Frosh Basketball



CANDIDATES FOR DEGREES



GRANT, GORDON, B.S.M.E.
Phi Kappa Upsilon
S.A.E.

GRAY, CHARLES F., B.S.M.
Sec. Senior Class
S.A.E.
Varsity Club
Baseball



GROGG, LEON R., B.S.Ch.E.
A.C.S.

GUSS, LAWRENCE, B.S.M.E.
S.A.E.
Basketball
Football—Std. Mgr.
Varsity Club

HANSEN, LESLIE W., B.S.M.E.

HAMEL, GILBERT, B.S.E.E.
Rho Delta Phi



HANSEN, JOHN W., B.S.I.E.

HAPP, GERALD R., B.S.M.E.
S.A.E.

Kappa Sigma Kappa
A.S.I.E.—Pres.



CANDIDATES FOR DEGREES



HAWLEY, HENRY H., B.S.M.E.

HAYMAN, THEODORE R.,
B.S.Ch.E.
A.C.S.



HEADY, ROY T., B.S.Ae.E.

I.A.S.—Pres.
S.A.E.
Glider Club

HENDRICKS, LEONARD G.,
B.S.C.E.
C.E.S.

HENDRICKS, ROBERT V.,
B.S.Ae.E.

I.A.S.—Vice Chair.
Aero Club
A.S.I.E.
S.A.E.

HENRY, ROBERT M., B.S.E.E.



HERRSCHER, WILLIAM A.,
B.S.M.E.

S.A.E.

HESS, VERNON M., B.S.E.E.

S.A.E.
Camera Club



CANDIDATES FOR DEGREES



HICKS, SHERBURNE, B.S.M.E.

HOBSON, JAMES W., B.S.I.E.
 Sec. Soph. Class
 Rho Delta Phi
 S.A.E.
 A.S.I.E.



HOCKING, LLOYD JOHN,
 B.S.E.E.

Tech News Photographer
 L-Book Photographic Editor

HOLM, WALTER M., B.S.M.E.

HOUSE, NEAL J., B.S.M.E.

JACKSON, HOWARD S.,
 B.S.E.E.



JACQUES, CHARLES F.,
 B.S.M.E.

JANISSE, LAWRENCE G.,
 B.S.Ae.E.

Aero Club
 I.A.S.



CANDIDATES FOR DEGREES



JEFFERS, RICHARD E., B.S.M.E.
S.A.E.

JENDRUSCH, DONALD
B.S.M.E.



JESSEN, WERNER, H., B.S.I.E.
Phi Kappa Upsilon
A.S.I.E

JOHNSON, EDWARD, B.S.M.

JOHNSON, WALTER A.,
B.S.M.E.

Vice-Pres. Senior Class (N) JONASSEN, RAYMOND R.,
B.S.E.E.

Aero Club—Vice Pres.
S.A.E.
I.A.S.
I.R.E.
Tennis



JOYNT, JACK W., B.S.C.E.
C.E.S.—Vice-Pres.

KAFARSKI, HENRY A., B.S.I.E.



CANDIDATES FOR DEGREES



KAYSER, RICHARD C., B.S.M.E.

KEHOE, NORMAN T., B.S.E.E.
S.A.E.



KELLER, GEORGE B.,
B.S.M.E.

Alpha Gamma Upsilon
S.A.E.

KELLY, JAMES H., B.S.M.E.

KEMSLEY, WILLIAM R.,
B.S.C.E.
C.E.S.

KENNEDY, JOSEPH E., B.S.M.E.
Student Council
Vice-Pres. Soph. Class (N)



KENNEDY, ROBERT L., B.S.A.E.

Phi Kappa Upsilon
A.I.A.
A.S.I.E.

KORTHALS, RONALD E.,
B.S.E.E.
Rho Delta Phi
S.A.E.



CANDIDATES FOR DEGREES



KOSOWAN, MICHAEL B.
B.S.M.E.

S.A.E.



KOSTYO, JOHN W., B.S.M.E.

S.A.E.



KREUGER, FRED, B.S.Ch.E.



KUCZMA, BUD, B.S.Ch.E.

Lambda Iota Tau
Student Council
A.C.S.

LAMB, JACK I., B.S.A.E.

Student Council
Arch. Club
A.I.A.

LANG, RICHARD L., B.S.A.E.

Arch. Club
A.I.A.
A.S.I.E.



LANG, ROBERT J., B.S.E.E.

Kappa Sigma Kappa
A.S.I.E.

LaPADO, ROBERT L., B.S.Ch.E.

A.C.S.



CANDIDATES FOR DEGREES

LAYMAN, HAROLD C., B.S.M.E.
Phi Kappa Upsilon
S.A.E.



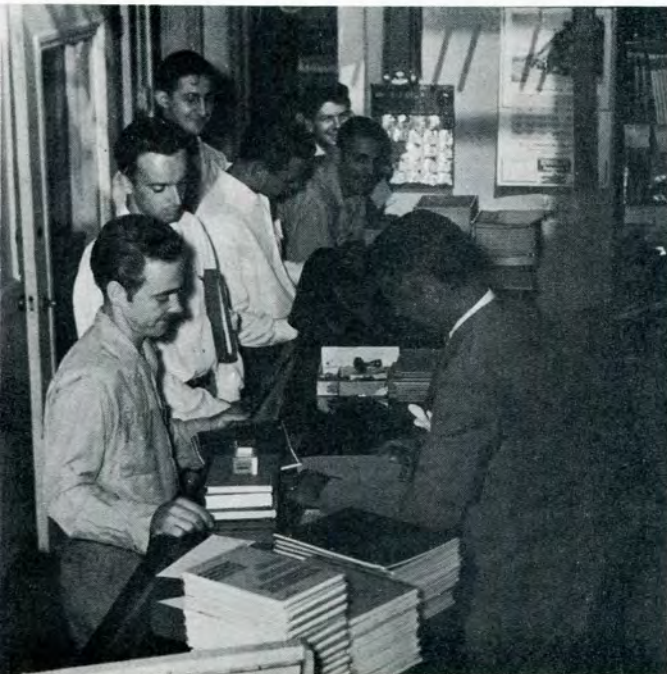
LAZAR, ANDREW J., B.S.M.E.
Kappa Sigma Kappa
S.A.E.



**LEININGER, KENNETH F.,
B.S.E.E.**
Tech News Staff



LEMON, ROBERT W., B.S.M.E.
Aero Club
Soaring Society
S.A.E.



CANDIDATES FOR DEGREES



LEWIS, STANLEY T., B.S.I.E.
Rho Delta Phi
A.S.I.E.

LIDTKE, WILBERT G., B.S.Ch.
A.C.S.



LITTLE, FLOYD W., B.S.M.E.
S.A.E.
I-Book Staff

LLOYD, JOHN R., B.S.I.E.
S.A.E.
A.S.I.E.

LOFSTROM, CARL A., B.S.I.E.
A.S.I.E.—Vice Chair.
S.A.E.

LOOMIS, DAVID C, B.S.E.E.



LOWE, ROBERT J.,
B.S.E.E. - B.S.M.E.
Kappa Sigma Kappa
Lawrence Lensmen
S.A.E.
A.S.I.E.
I.R.E.

LYON, BRUCE A., B.S.I.E.
Student Council—Jud. Chair.
Kappa Sigma Kappa—
V. Pres.
A.S.I.E.—Vice Pres.
S.A.E.



CANDIDATES FOR DEGREES



MACEWKA, NICK, B.S.E.E.
I.R.E.
S.A.E.

MacILREATH, JAMES A.,
B.S.M.E.



MANSUR, GEORGE A.,
B.S.M.E.
S.A.E.

MARKLOW, EDWARD J.,
B.S.M.E.

MARRA, FRANK S., B.S.M.E.

Lambda Iota Tau
Rho Delta Phi
Student Council
Editor—Tech News
Editor—L-Book
S.A.E.

MASON, BEN V., B.S.E.E.
A.S.I.E.



MASON, DEAN F., B.S.E.E.

Alpha Gamma Upsilon
I.F.C. Representative
Radio Club

MATOSH, VICTOR G.,
B.S.Ch.E.
A.C.S.
S.A.E.



CANDIDATES FOR DEGREES



MONHEIT, MAX, B.S.E.E.

MONTEITH, RICHARD L.,
B.S.M.E.
S.A.E.



MOORE, ELLSWORTH A.,
B.S.M.E.

Rho Delta Phi—Pres.
S.A.E.

MORITZ, EDWARD W.,
B.S.Ch.E.

MORKIN, ROBERT M., B.S.M.E.
S.A.E.

MULLIGAN, DONALD E.,
B.S.I.E.

Kappa Sigma Kappa
S.A.E.
A.S.I.E.



MULLIGAN, GEORGE V.,
B.S.I.E.

Kappa Sigma Kappa—Pres. NAGEL, MARK L., B.S.C.E.
Bus. Mgr.—Tech News C.E.S.
S.A.E. S.A.E.
A.S.I.E.



CANDIDATES FOR DEGREES



NELSON, EARL H., B.S.M.E.

Rho Delta Phi
S.A.E.

NEUMANN, JAMES N., B.S.M.E.

Rho Delta Phi—Rec. Sec.
S.A.E.—Vice Chair.
A.S.I.E.
I.F.C. Representative



NICOL, MAX E., B.S.I.E.

S.A.E.
A.S.I.E.

NOAKES, THOMAS E, B.S.M.E.

Phi Kappa Upsilon
S.A.E.

NOELLERT, ARTHUR T.,
B.S.E.E.

Rho Delta Phi

NORING, FELIX P., B.S.I.E.
A.S.I.E.



NOWINSKI, JEROME J.,
B.S.Ch.E.
Alpha Gamma Upsilon
A.C.S.

O'BRIEN, MICHAEL K., B.S.I.E.



CANDIDATES FOR DEGREES



OSEMLAK, FRED C., B.S.Ch.E.
A.C.S.—Pres.

PACIFICO, FRANK, B.S.M.E.



PARK, RODERICK A., B.S.I.E.

A.S.I.E.
S.A.E.
Varsity Club
Baseball

PARR, RAYMOND T., B.S.I.E.

Kappa Sigma Kappa
A.S.I.E.
S.A.E.

PAYNE, WILLIAM J., B.S.Ae.E.

I.A.S.
S.A.E.
A.S.I.E.
Glider Club

PAYOR, CHARLES L., B.S.I.E.

Kappa Sigma Kappa—Treas.
S.A.E.
A.S.I.E.



PELAK, WALTER, B.S.E.E.

PELL, WENCE P., B.S.M.E.

Phi Kappa Upsilon—Treas.
Pres.—Frosh Class
Sec.—Junior Class



CANDIDATES FOR DEGREES



PENN, MARVIN J., B.S.C.E.

C.E.S.—Sec.
A.S.I.E.
Camera Club

PENNANEN, WILLIAM, B.S.E.E.



PERAINO, JOHN, B.S.M.E.

S.A.E.

PERSON, DONALD L., B.S.M.E.

Tech News Staff
S.A.E.

PETRYKOWSKI, LEONARD J.,
B.S.C.E.

C.E.S.—Treas.

PIERRON, GILBERT D., B.S.M.E.

Rho Delta Phi
S.A.E.



POLAN, FELIX P., B.S.I.E.

Phi Kappa Upsilon—Treas.
A.S.I.E.—Pres.
Baseball

PONKSHE, HARI D.,
B.S.M.E. - B.S.I.E.

A.S.I.E.



CANDIDATES FOR DEGREES

POZAREK, JEROME J., B.S.M.E.



PRANGE, JAMES M., B.S.M.E.
Phi Kappa Upsilon—Treas.
A.S.I.E.



RAUCH, MELVIN L., B.S.Ch.E.
A.C.S.



REGAL, ELDON L., B.S.M.E.
S.A.E.



Frank Schuster and Leo Swanson man the switches before running a test on the Marine Diesel in the Mechanical Engineering Laboratory.



CANDIDATES FOR DEGREES



REMBOWICZ, VENCE J.,
B.S.M.E.

S.A.E.
A.S.I.E.

RHODES, DONALD J., B.S.M.E.

Rho Delta Phi
S.A.E.



RINEHART, WILLIAM E.,
B.S.E.E.

S.A.E.
Sec.—Junior Class
"L" Book Staff

ROBINSON, LLOYD R.,
B.S.Ch.E.

A.C.S.—Vice Pres.

ROESCH, DONALD A., B.S.M.E.

Phi Kappa Upsilon
Pres.—Frosh Class
Vice-Pres.—Soph. Class
Student Council
Camera Club
Fencing

ROGERS, BENJAMIN F.,
B.S.I.E.

Kappa Sigma Kappa



ROUGEAU, VERNON B.,
B.S.C.E.

Kappa Sigma Kappa
C.E.S.

RUDOLPH, IRVIN W., B.S.E.E.

Rho Delta Phi
S.A.E.



CANDIDATES FOR DEGREES



RUGER, ROBERT D., B.S.I.E.

Rho Delta Phi—Pres.
Treas.—Senior Class
S.A.E.

RUPINSKI, GEORGE, B.S.M.E.
S.A.E.



RYFF, ANTHONY S., B.S.E.E.

I.R.E.
S.A.E.

SAM, SAMUEL G., B.S.Ae.E.
I.A.S.
Aero Club

SANKER, LEO E., B.S.M.E.
S.A.E.

SCHMIDT, LOUIS R., B.S.M.E.
Varsity Club
Track



SCHULERT, ROBERT D.,
B.S.M.E.
S.A.E.

SCHULTZ, CLAYTON J.,
B.S.M.E.
Alpha Gamma Upsilon
Tennis



CANDIDATES FOR DEGREES



SCHUSTER, FRANK M., B.S.E.E.
Rho Delta Phi
S.A.E.

SHEPARD, THERESE, B.S.E.E.
S.A.E.
I.R.E.



SHOEBOTTOM, ROBERT,
B.S.M.E.
S.A.E.
Astronomy Club

SHUGART, JOE L., B.S.C.E.
Kappa Sigma Kappa
C.E.S.
S.A.E.

SHUMAN, RICHARD T.,
B.S.M.E.
S.A.E.
Baseball
Golf

SMILLIE, DONALD G., B.S.Ae.E.
I.A.S.—Sec.-Treas.
Aero Club
S.A.E.
A.S.I.E.



SMITH, WILLIANDRES, B.S.M.E.
S.A.E.

SNOOKS, H. RAYMOND,
B.S.C.E.
C.E.S.



CANDIDATES FOR DEGREES



SCHUSTER, FRANK M., B.S.E.E.
Rho Delta Phi
S.A.E.

SHEPARD, THERESE, B.S.E.E.
S.A.E.
I.R.E.



SHOEBOTTOM, ROBERT,
B.S.M.E.
S.A.E.
Astronomy Club

SHUGART, JOE L., B.S.C.E.
Kappa Sigma Kappa
C.E.S.
S.A.E.

SHUMAN, RICHARD T.,
B.S.M.E.
S.A.E.
Baseball
Golf

SMILLIE, DONALD G., B.S.Ae.E.
I.A.S.—Sec.-Treas.
Aero Club
S.A.E.
A.S.I.E.



SMITH, WILLIANDRES, B.S.M.E.
S.A.E.

SNOOKS, H. RAYMOND,
B.S.C.E.
C.E.S.



CANDIDATES FOR DEGREES



SOBAK, STEVE, B.S.M.E.

Kappa Sigma Kappa
S.A.E.—Treas.
A.S.I.E.
Tech News Staff

SOOD, HERBERT, B.S.M.E.
S.A.E.



SOUDER, RICHARD D., B.S.I.E.

Lambda Iota Tau
A.S.I.E.
S.A.E.
Astronomy Club
Tech News Staff

SPARRER, HENRY R., B.S.I.E.

STASZEWSKI, A. M., B.S.M.E.

Phi Kappa Upsilon
S.A.E.

STEVENS, RAYMOND H.,
B.S.M.E.

Phi Kappa Upsilon
S.A.E.
Sports Editor—Tech News



STEWART, BILLY D., B.S.M.E.

Lambda Iota Tau
Pres.—Frosh Class

STRAUSS, CARL E., B.S.M.E.

Phi Kappa Upsilon
Tech News Staff



CANDIDATES FOR DEGREES



STRILCOV, BERNARD G.,
B.S.M.E.

S.A.E.
A.S.I.E.
Varsity Club
Rifle Team
Fencing

SULIKOWSKI, EDMUND J.,
B.S.Ch.E.

S.A.E.
A.C.S.



SULLIVAN, WILLIAM N.,
B.S.M.E.

SWANSON, CHARLES W.,
B.S.I.E.

Phi Kappa Upsilon
A.S.I.E.—Treas.
S.A.E.

SWANSON, LEO E., B.S.E.E.

Kappa Sigma Kappa
S.A.E.
A.S.I.E.

TAIT, EDWARD, B.S.E.E.

Pres.—Senior Class (N)



TAYLOR, JAMES, B.S.C.E.

C.E.S.—Pres.
S.A.E.

THOMAS, PAUL P., B.S.M.E.

Phi Kappa Upsilon—
Vice-Pres.
S.A.E.



CANDIDATES FOR DEGREES



THOMPSON, CARL, B.S.M.E.
Alpha Gamma Upsilon

TIBEDEAU, JAMES H., B.S.A.E.
Arch. Club



TIMM, JAMES L., B.S.C.E.
Rho Delta Phi
C.E.S.

TODD, ARTHUR H., B.S.M.E.
Phi Kappa Upsilon—
Vice-Pres.
S.A.E.
Aero Club

TOPALIAN, JACK N., B.S.M.E.

TOTH, PAUL E., B.S.Ch.E.
Phi Kappa Upsilon
I.F.C. Representative



VALERIO, JOHN G., B.S.M.E.

VAN NORMAN, GEORGE M.,
B.S.E.E.



CANDIDATES FOR DEGREES



VAN SKIVER, FREDERICK A.,
B.S.E.E.
S.A.E.

VERALDI, FRANK A., B.S.M.E.
Student Council
Rifle Club—Pres.
S.A.E.
Varsity Club
Rifle Team
Tech News Staff



VICARY, JOHN D., B.S.M.E.

VRANIAN, CHARLES, B.S.M.E.
Rho Delta Phi
Soaring Society—Pres.
Aero Club
S.A.E.

VOGT, JOHN R., B.S.Ch.E.
Alpha Gamma Upsilon

WALDEN, JACK R., B.S.Ae.E.
Lambda Iota Tau
Student Council—Treas.
Aero Club—Pres.
S.A.E.—Sec.
I.A.S.



WEBER, WILLIAM F., B.S.Ae.E.
I.A.S.
Aero Club
S.A.E.

WECK, EDWIN W., B.S.M.E.
S.A.E.



CANDIDATES FOR DEGREES



WEIDEL, EDWARD E., B.S.Ch.E.

Kappa Sigma Kappa

WELLS, CHESTER F., B.S.M.E.

S.A.E.

A.S.I.E



WILLIAMS, WHALLEY H.
B.S.M.E.

S.A.E.

Track

WILSON, JAMES T., B.S.M.E.

Student Council

S.A.E.

Varsity Club

Fencing

WISE, DEAN M., B.S.M.E.

S.A.E.

A.S.I.E

WNEK, ALFRED B., B.S.M.E.

S.A.E.



WOODRUFF, GERALD E.,
B.S.E.E.

YERKE, RENE H., B.S.E.E.

Kappa Sigma Kappa

A.S.I.E.

Varsity Club

Basketball



CANDIDATES FOR DEGREES

YOUNG, ARTHUR E., B.S.M.E.
Alpha Gamma Upsilon



YUGOVICH, MICHAEL, B.S.E.E.
S.A.E.



ZAREND, EDWIN F., B.S.M.E.



ZIMELOW, JACK L., B.S.E.E.
Phi Kappa Upsilon—Treas.
S.A.E.
Camera Club—Sec. Treas.
Varsity Club
Tennis



This scene taken at the Annual New Year's Eve Dance appropriately indicates the jubilation felt by the members of this year's graduating class.

By signifying the end of one year and the beginning of another it also signifies the completion of a part of each graduate's education and the beginning of his role in industry.



CANDIDATES FOR DEGREES

Not Pictured

Kenneth M. Boyd, B.S.B.A.
Allen Carpenter, B.S.M.E.
William Clemons, B.S.C.E.
Seymour Handelman, B.S.E.E.
Norman Hankins, B.S.I.E., B.S.B.A.
Henry Mattila, B.S.M.E.
Benjamin Monast, B.S.I.E.

Earl Muntean, B.S.M.E.
George Popa, B.S.A.E.
Bruce Reno, B.S.E.E.
Robert Robinson, B.S.B.A.
Harold Roscoe, B.S.I.E.
Robert Van Allen, B.S.E.E.
Thaddeus Ziemicki, B.S.C.E.

SENIOR SPRING SWING

Committee Chairman Cliff Canever greets Tex Beneke at the Senior Class Spring Swing. Committee looking on are: (left to right) Earl Nelson, Gil Pieron, Alex Andre, Bruce Brewin and Lloyd Clark.

When relieved of their duties the committee joined the happy throng with their dates and wives (below-right).



On the next few pages are pictured those who aspire to the accolade and robe of future graduation. First, we have the Juniors—acutely aware of their coming responsibilities as school leaders; next, the Sophomores—who are sure they know it all now but are willing to wait two more years; and finally, the Freshmen—who will be proud to show the incoming students all "the ropes."

To these men we leave the feeling of pride in being students at Lawrence and carrying on the traditions of character, scholarship, and interest which we formed here. We promise them all our support and wish them the best of luck.

UNDERGRADUATES



JUNIOR CLASS



DAY SCHOOL OFFICERS

PresidentJohn Erickson
Vice-President.....Robert Fontaine
Secretary-Treasurer.....Kenneth West

Left to right: Kenneth West, John Erickson, and Robert Fontaine.

NIGHT SCHOOL OFFICERS

PresidentDon Parker
Vice-PresidentJohn Lauer
SecretaryEarl Ogger
TreasurerRobert Meeker



Left to right: Don Parker, John Lauer, Earl Ogger and Robert Meeker.

JUNIOR CLASS

JUNIOR CLASS

This year's J-Prom committee really came up with an efficient promotion plan to foster ticket sales. The plan incorporated the sale of "shares of stock" initially to capitalize the event. The wide approval of the student body was evident as witnessed by the immediate sale of the limited shares. Share holders were rewarded by a dividend on all of the profits in addition to taking part in one of the finest J-Proms at Lawrence.

Committee men for this gala event were: left to right; Bruce Polkinghorne, Robert Fontaine, Edward Kennedy, and John Erickson.



JUNIOR CLASS

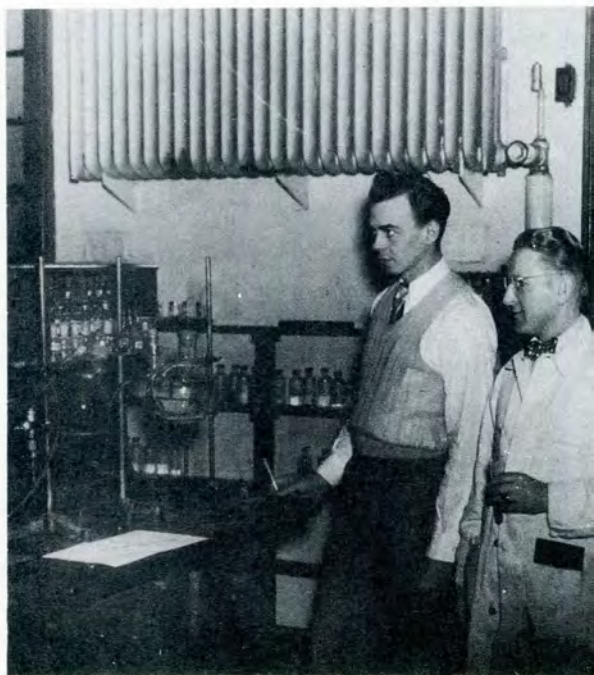


Practical experience through extensive use of the school's laboratory equipment prepare students for future role in industry.

(Left) A junior sets up one of the metal hardness testing machines prior to an experimental run in the Strength of Materials laboratory.

(Below Left) The study hall in the "Old Library" is continually filled to capacity with students making use of their spare time and the wealth of reference material available. Student math tutors are made available to assist undergraduates in their work.

(Below Right) Mr. Moy, of the Chemistry Department (right), checks over a student's "set-up" before a chemical test is run.



JUNIOR CLASS



SOPHOMORE CLASS



Left to Right; Al Prevost, Ed Marcum, Chuck Gibson, and Ralph Wilhelm.

DAY SCHOOL OFFICERS

PresidentChuck Gibson
Vice-PresidentAl Prevost
SecretaryRalph Wilhelm
TreasurerEdward Marcum



SOPHOMORE CLASS



The Sophomore Class willingly assumed the responsibility of hazing the incoming Freshmen during "Hell Week." At the left the hazing committee started the proceedings by issuing "beanies" and copies of "Dear Old L.I.T." to the Freshmen. With this underway . . .

. . . they directed the Frosh to the special entrance in the left wing of the school. The hazing rules included name-cards to be worn by the Freshmen, adequate supplies of matches and nickels, and a general attitude of respect towards the "upper-classmen."



The Sophomores took their minds off the Freshmen long enough to sponsor a "real old time barn dance" which was held at Bill's Barn. Impromptu entertainment was supplied by members of the Sophomore Class and informality was the keynote of the evening. This affair, followed by the Sophomore Shuffle, gave the Sophomores a social season to be envied by all the classes.



SOPHOMORE CLASS



(Opposite—Right) Investigating the "insides" of an automobile transmission in the physics laboratory gives these sophomores some added data in the calculations necessary for the completion of an experiment on speed reduction.

(Above) Orderly handling of Sophomore business is accomplished through parliamentary procedure at all class meetings. This past year's crop of officers successfully sponsored a "Barn Dance" and a "Sophomore Shuffle" in addition to their efficient handling of elections and student council relations.

(Opposite — Below) Pausing long enough to pose for the photographer, these sophomores are checking the angular deflection of a metallic rod on the "torsionometer" in the physics laboratory.

(Right) Machine shop practice in Lawrence Tech's well equipped "plant" has proven a valuable asset in the development of practical engineers. Mugging the camera are Mr. Rissman and Mr. Wright of the machine tools department.



SOPHOMORE CLASS



FRESHMAN CLASS



DAY SCHOOL OFFICERS

President Skip Drane

Skip Drane assumed active and complete control of the Day School Freshman Class when the remaining officers left school.

NIGHT SCHOOL OFFICERS

President Otto Jensen
Vice-President George Ferguson
Secretary Irene Salvatore



Left to right: Irene Salvatore and George Ferguson

FRESHMAN CLASS



FRESHMAN CLASS



(Left) At the outset of the school year and the traditional Frosh Hell Week, the new batch of "Freshies" send up a cry of approval as an indication to the Sophs that they "can take it," but . . .

(Below) . . . their exuberance subsided as the "week" wore on. Below—left they are shown using the special entrance provided for them, under the watchful "care" of the Sophs.



FRESHMAN CLASS

When the scars of Hell Week wore off the Sophomores showed that they were "right guys" by setting the Frosh off on the right foot in electing their class officers. Here, Walt Richardson is shown giving his campaign speech which won him the support of the Freshman Class and Presidency.



The Freshman Class constituents gave their candidates full support in one of the largest election turn-outs in the history of the school. Their efforts were rewarded as . . .

. . . the elected officers provided them with a "Frosh Fling" to offset the school routine. Woody Herman and his band were booked for the occasion and the affair was the highlight of the Frosh social season.



Fraternities play a prominent role on the campuses of all American colleges.

It is a natural sociological fact that people with common interests, desires, and backgrounds tend to gather and work together towards their singular purposes.

At Lawrence Tech fraternities play a leading part in the social and scholastic advances of the school. They form the background of most of the important school activities.

Whether on the field or in the classroom, the fraternity man takes pride in making his contribution to the school by building up school spirit and making school life interesting. It is this attitude that has made fraternities so important at Lawrence Tech.

FRATERNITIES



LAMBDA IOTA TAU

HONOR SOCIETY



The Lambda Iota Tau honor award committee appointed by the student council for 1949 consisted of John Lauer (Chairman), James Wilson, Irving Rudolph, and Skip Drane. Here, James Wilson is presenting the honor keys to some of the seniors selected as members of the honor society. Left to Right; Sam Dabich, Robert Dailey, Billy Stewart, Wilson, Richard Souder, John Goulasarian and Donald Bolle.

Since its inception in 1934, Lambda Iota Tau has been an inspiration to students of Lawrence Tech to encourage a high scholastic standing and participation in extra-curricular activities.

Subject to the strict approval and control of the student council, those seniors who have maintained a "B" average or better and have taken part in a prescribed amount of extra-curricular activities, are honored by membership in the honor fraternity, Lambda Iota Tau, which represents the Greek letters for L. I. T.

Graduates who have received the award for this year are:

Alexander Andre
Donald Bolle
John Bunker
Edward Chester
Sam Dabich
Robert Dailey

William Dryburgh
John Goulasarian
Harry Haaxma
Norman Hankins
Raymond Jonassen
Walter Johnson

Bud Kuczma
Robert LaPado
Frank Marra
Irving Rudolph
Bernard Strilcov
Richard Souder

Billy Stewart
Jack Walden
Dean Wise
James Wilson
Rene Yerke

ALPHA GAMMA UPSILON



President Roger Pasqual
Vice President Robert Lund
Recording Secretary John Moran
Corresponding Secretary Al Ratush
Treasurer Robert Huggett
Sergeant-at-Arms Ray Kempton
House Manager Edward Mish



Standing (left to right): Robert Lund, John Moran, Robert Huggett, Al Ratush, Ray Kempton, Edward Mish.
Seated: Roger Pasqual.

Alpha Gamma Upsilon is the second oldest social fraternity on the campus. Lawrence Tech's chapter, Epsilon, founded in June, 1933, is the fifth chapter of Alpha Gamma Upsilon. This year, with the founding of the tenth chapter the fraternity has attained the status of a national organization.

This year the fraternity has the largest and most active membership list in its history. Alpha Gamma men have participated in many extra curricular interests here at Lawrence Tech. Among these are their activeness in student-government which can be seen by the high percentage of members holding responsible positions in undergraduate organizations.

The fraternity's journalistic zeal paid off as the "Epsilonian" won the Journalism cup award last year. The chapter paper is a strong contender again this year.

Included in the past season's social calendar were bowling leagues, bridge tournaments, challenge games in all sports and a Christmas Party given for needy children.

In addition to the many social functions provided for by the fraternity, Alpha Gamma Upsilon has always endeavored to brighten and enlarge the future of Lawrence Tech.

ALPHA GAMMA UPSILON



H. Backstrand
T. Berry
W. Bielawski
R. Blask
C. Boike
W. Brady
G. Burke

P. D'Agostino
W. Daniels
E. Davison
E. Donaldson
A. Dulchavsky
R. Huggett
G. Keiller

R. Kempton
E. Kennedy
R. Lund
R. Macan
D. Mason
L. McGrail

D. McIntyre
W. McCoskey
H. McMenemy
J. Moran
J. Nowinski
J. Ouellete

R. Parker
R. Pasqual
E. Pawlak
M. Pawlowski
P. Petrak
R. Pitts

P. Pompeii
A. Prevost
A. Ratush
B. Reynolds
D. Schnabel
C. Schultz
R. Schoof

L. Sibal
C. Thompson
D. Thornton
D. Valentine
J. Vogt
D. Yasenchak
A. Young

ALPHA GAMMA UPSILON



The Alpha Gamma choir serenades the throng attending one of Lawrence Tech's fabulous basketball-entertainment programs. The Alpha Gamma's won the fraternity competition by giving out with a fine rendition of the school song.



The Epsilonian staff poses with the Journalism Award presented to them for their journalistic merit by the national organization. The staff members on the prize winning publication were; (left to right) John Moran, Doug Thornton, Edward Kennedy, Bob Lund, Don McIntyre, and Al Ratush.



A group of prospective Alpha Gammas are set through their paces during the intensive pledge season engaged in by the fraternity.



KAPPA SIGMA KAPPA



BETA CHAPTER

President.....George V. R. Mulligan
Vice-President.....Bruce A. Lyon
Secretary.....Donald J. McCormick
Treasurer.....Charles L. Payor

Left to Right; George Mulligan, Henry Molenveld
and Bob Dailey.

Kappa Sigma Kappa, represented on the Lawrence Tech campus by the Michigan Chapter, is the second of a triumvirate of national fraternities that sprang from the Virginia Military Institute in the Civil War Reconstruction days—Alpha Tau Omega in 1865, Kappa Sigma Kappa in 1867, and Sigma Nu in 1869.

Although the Kappa Sigma Kappa history spans eighty-two years, the Lawrence Tech chapter's affiliation is of more recent date—January, 1948.

High spots of the past year's social activities were the Spring Dance at Bonnie Brook Country Club and several joint social affairs with Michigan Alpha Chapter of Kappa Sigma Kappa at Detroit Institute of Technology. In December, 1948, Michigan Beta organized and executed a blood donor campaign for the Veterans Administration Hospital in Dearborn.

KAPPA SIGMA KAPPA



C. Barbour	R. Chambers	R. Dean	O. Jackson	B. Lyon	C. Payor	S. Sobak
W. Berklich	W. Chirota	E. Dika	J. Janki	E. Matthews	R. Pensak	L. Swanson
L. Berlin	J. Cooley	J. Emerson	R. Lang	D. McCormick	G. Popa	J. Thomas
H. Bizon	H. Cromwell	W. Finlayson	A. Lazar	H. Molenveld	B. Rogers	H. Vessels
W. Broker	L. Cromwell	I. Gersich	D. Lewis	D. Mulligan	V. Rougeau	M. Vila
W. Brown	J. Cumming	L. Hall	R. Lowe	G. Mulligan	H. Selling	E. Weidel
T. Campbell	R. Dailey	J. Hansen		R. Parr	J. Shugart	R. Yerke

KAPPA SIGMA KAPPA



The latest batch of Kappa Sig pledges congregate for their daily noon-time song fest. Their daily rendition of "Dear Old L. I. T." became more listenable as the pledge season wore on.



Prexy George V. R. Mulligan grins his approval as he checks the ticket sales on one of the Kappa Sig raffles. Left to right are: Bruce Lyon, Mulligan, and Steve Sobak.

PHI KAPPA UPSILON



DELTA CHAPTER

President Fred Ely
 Vice President Arthur Todd
 Secretary Bill Comb
 Treasurer Felix Polan
 Master of Rituals Jack Chandler



Left to right: Bill Comb, Jack Chandler, Fred Ely, Felix Polan, and Arthur Todd.

As the 1949 school year comes to a close the members of Phi Kappa Upsilon can look back on a year of merit and ahead to a promising future.

A healthy and active fraternity can be one of the greatest assets of Lawrence Tech; this is the prime purpose of the fraternity. Phi Kappa has been pledged to the betterment of the school and its activities from its founding and each passing year has shown progress to this goal.

The progress that has been made since its reactivation after the return of the members that were in the service has been largely due to the men that are leaving at this time due to graduation; the job ahead of them was big and they have done well.

The fraternity activities of the last year included two pledge seasons, the annual dinner dance, the inter-frat dance and several picnics.



ALPHA CHAPTER

President..... Dick Bristow
 Vice-PresidentSteve Toth
 Secretary.....Harry Foster
 TreasurerDon Rausch

Left to Right: Harry Foster, Dick Bristow, Steve Toth, and Don Rausch.

PHI KAPPA UPSILON



W. Ahland
S. Anucinski
D. Behm
R. Boland
J. Bunker
L. Bowling
J. Bylund

R. Bristow
J. Chandler
E. Chester
L. Clifton
J. Corbett
J. Crittenden
D. Dean

O. DeClerq
F. Dimijian
H. Egan
F. Ely
J. Erickson
L. Esch
J. Fehlberg

M. Finazzo
W. Foglia
R. Fontaine
T. Fraser
L. Gerin
F. Golia
F. Goring

G. Grant
W. Haddow
H. Hall
B. Hart
M. Howland
R. Jenzen
W. Jessen

P. Jochan
J. Kelly
R. Kennedy
H. Layman
J. Mance
J. McLean
A. Nicotra

T. Noakes
C. Ogar
F. Parker
W. Pell
F. Polan
B. Polkinghorne
J. Prange

PHI KAPPA UPSILON



D. Roesch	R. Skupny	C. Slapinskas	R. Sinko	M. Stajich	J. Stanley	A. Staszewski
W. Stetler	R. Stevens	C. Strauss	C. Swanson	P. Thomas	A. Todd	P. Toth
T. Treciak	C. Trestrial	J. Ulaich	R. Vaillancourt	L. Valente	B. Varnum	J. Zimelow

At Right: Members of Alpha and Delta chapters of Phi Kappa begin to congregate before starting out on one of their well known outings. Below: The Phi Kappa choir in true barber shop style give out with a well-received version of the school song at the Fraternity "choir competition."



RHO DELTA PHI



BETA CHAPTER

President	Robert Ruger
Vice-President.....	Ellsworth Moore
Secretary	James Neumann
Treasurer.....	Don Bolle

Left to Right; Don Bolle, Robert Ruger and Ellsworth Moore.

There are two chapters of the Rho Delta Phi Fraternity on campus at the present time. The Alpha Chapter is composed of night school students and the Beta Chapter is made up of day school students.

Rho Delta Phi is purely a social fraternity, but it takes an active interest in all school affairs and endeavors at all times to promote the interests of the school and to promote cooperation and good will among all of the campus groups.

The Rho Deltas took an active lead in the setting up of the Inter-fraternity Council and its associated activities. The Rho Deltas have taken an active part in student government and publications and have placed many leaders in other campus groups.

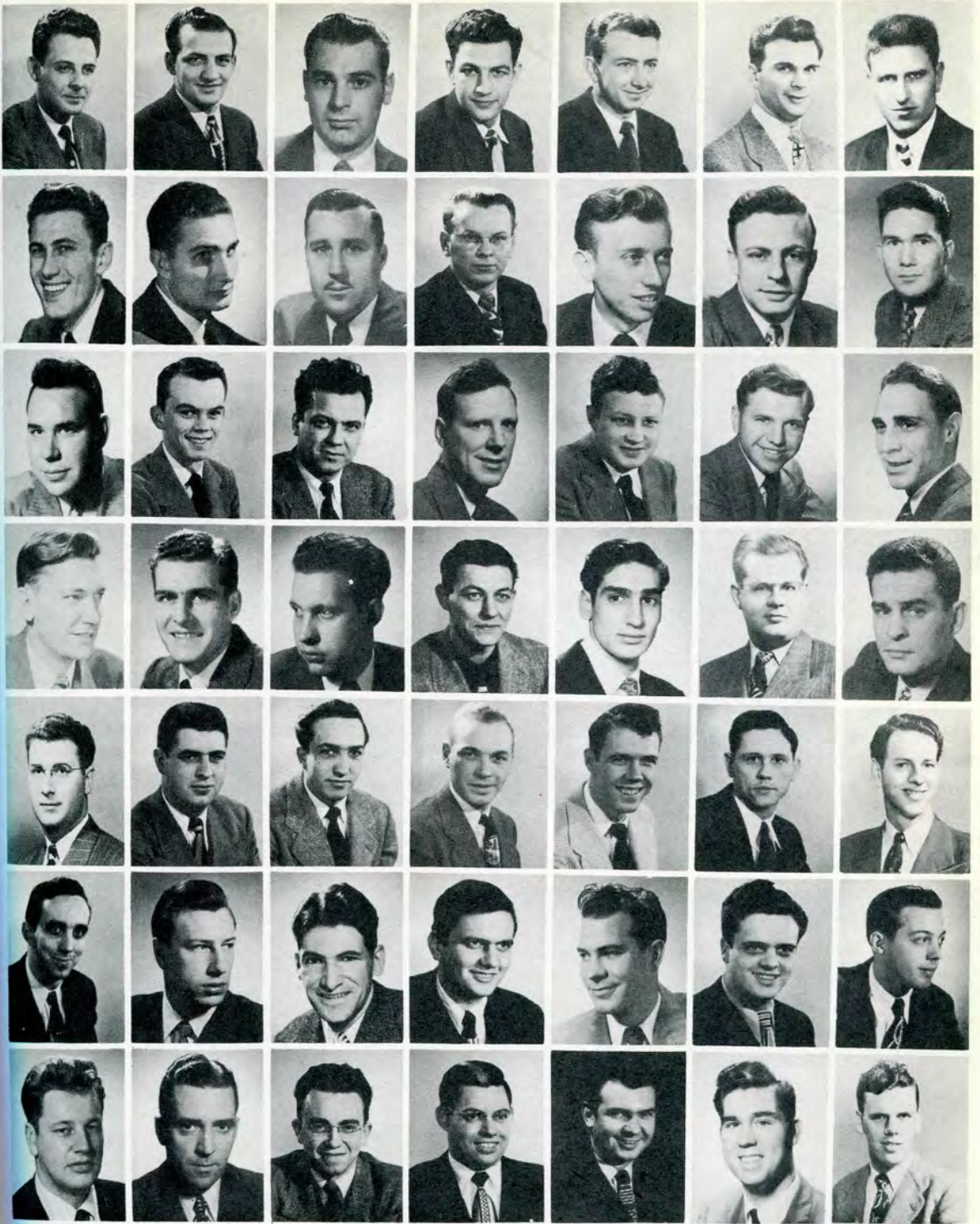
The year 1949 was a banner year for the Rho Deltas. The fraternity reached a record membership with two good pledge seasons. This year marked the launching of the Alpha Omega Chapter for alumni members.

The fraternity maintains a bowling league throughout the winter month and assembles frequently for summer outings during the vacation months.

ALPHA CHAPTER

President	Joe Tocco
Vice-President	Ferdinand Bolle
Rec. Sec.	Richard Larkins
Corr. Sec.	Matt Hunter
Sgt. at Arms	Paul Stenberg

RHO DELTA PHI



W. Adams
D. Bolle
D. Bosker
B. Brewin
D. Bush
F. Button
C. Canever

J. Cappello
J. Cardwell
J. Clanton
W. Cook
W. Croll
J. Daddow
V. Dorwin

W. Dow
W. Dryburgh
C. Gilgallon
G. Hamel
H. Haytor
J. Hobson
M. Hunter

G. Jamgochian
L. Jankowski
E. Korthals
E. Kuzel
J. Lagergren
R. Larkins
W. Lavalli

W. Lenn
S. Lewis
C. Lystad
F. Marra
D. Miller
E. Moore
B. Mosher

E. Muntean
E. Nelson
J. Neumann
M. Noble
A. Noellert
J. Pelamatti
G. Pierron

H. Price
R. Rhodes
I. Rudolph
R. Ruqer
L. Scarlett
F. Schuster
J. Shuring

RHO DELTA PHI



P. Stenberg



J. Stewart



E. Tavora



J. Timm



J. Tocco



C. Vranian



C. Zyla



INTER-FRATERNITY COUNCIL



Members of the four fraternities on campus raise up their voices in unison displaying the integration of a common ideal of brotherhood among men. This scene took place at the Annual Inter-Fraternity Dance where all the fraternities combined their promotion talents to put on one of the highlights of the combined fraternity social season.

Realizing that all the fraternities on campus were basically formed for the betterment of high ideals at Lawrence Tech a council composed of representatives from the four fraternities was formed to correlate certain activities and interests for their mutual benefit.

One of the primary functions of the council is to screen all pledge candidates for scholarship and regulate the opening dates of the rushing season. The council also keeps record of a calender of activity dates and in conjunction with the Student Council facilitates a smoother and more enjoyable social season for the active Tech student.



Pictured above is the committee composed of members from the four fraternities that was responsible for the various arrangements which made the Inter-Fraternity Dance the success that it was. Standing (Left to Right); Joe Shugart, Kappa Sigma Kappa; Wally Croll, Rho Delta Phi; and Edward Kennedy, Alpha Gamma Upsilon. Seated; Ray Stevens, Phi Kappa Upsilon; and Jack Clanton; Rho Delta Phi.



A scene at the Inter-Fraternity Dance which will be remembered as one of the highlights of the combined fraternitiy season. Members of the four fraternities with their wives or dates dined, danced, and displayed a feeling of mutual association.

The worth of a school is not entirely measured in the classrooms. This is especially true of a technical school, where the student must keep abreast of technological advances as well as provide social outlets for himself. For these multiple purposes, various organizations have come into being at Lawrence Tech as an outgrowth of student interests.

Among the variety of organizations active on campus are the Soaring Society, the Tech News, the S. A. E., and the Lawrence Lensmen—all with a definite purpose and each actively engaged in bringing objects of interests to their members and the student body.

Their job is to lighten the load of study and they have done it well.

ORGANIZATIONS



AMERICAN CHEMICAL SOCIETY



OFFICERS

President	Ralph Boyd
Vice-President.....	Lloyd Robinson
Secretary.....	Walter Melenofsky
Treasurer	Harold Bell
S. C. Representative.....	Doug Denton

Standing (Left to Right): Doug Denton and Harold Bell.

Seated: Lloyd Robinson, Ralph Boyd, and Walter Melenofsky.

The interesting and colorful displays seen around school for the past year which have attracted students in every branch of engineering hold forth the American Chemical Society's activeness in their work. The A. C. S. brings to the Chemical major here at Lawrence Tech a closer relationship to the chemical profession in keeping with L.I.T.'s motto of "Theory and Practice."

Sponsored by Mr. Ryan of the Chemical Engineering Department, the society conducted field trips which included a tour through the chemical laboratories of the Great Lakes Steel Corporation.

The showing of educational film at their meetings proved to be a great asset in fostering closer ties with the student and industry.

The intricate displays and models constructed by members of the Society included an attractive feature on Neon Lighting and a miniature scale model of the mineral extracting process of a copper mine.

Highlight of the Society's social season was when the Tech Chapter acted as host to the Detroit Section of the American Chemical Society at the Rackham Memorial.

Members of the A.C.S. receive copies of the Chemical and Engineering News and incorporate contemporary advancements in their study of the field of chemistry.

ASTRONOMY CLUB



Left to Right: Al Petrilli, Tadeusz Baran, Mr. J. B. Thomson (Faculty Advisor), Ted Anderson, Bill Sisson, Ed Romanowski, and Marshall Blank.

OFFICERS

President Art Litheredge
Vice-President Edward Pawlak
Sec.-Treas. Carmine Cervi

A desire to encourage interest and advance their knowledge in the field of astronomy prompted a group of students, sponsored by Mr. Thomson of the Math Department, to organize the Astronomy Club. Since their organization in September of 1948 the members have designed and constructed a 6 inch reflector telescope as one of the constructive projects planned by the group.

In conjunction with the telescope construction, the members conducted a tour of the Observatory at Cranbook Academy. While there the members observed many stellar phenomenon including double stars and the rings of Saturn through an eight inch variable power telescope.

Since the formation of the club, the members have had the pleasure of hearing many interesting lectures pertaining to the field of astronomy. Here at Lawrence Tech they heard Dr. Brewington's interesting account of "The Expanding Universe" and Mr. Bagby's lecture on "The Extent of the Universe." The group also journeyed to Ann Arbor to hear Dr. George Gamon, who is an expert on Astrophysics, lecture on "The Evolution of the Universe."

In addition to the lectures given by prominent members of the faculty and experts in the field, the members held seminars and round table discussions on topics in the field of astronomy for which they have special interest.

The club has shown itself to be one of the most rapidly growing organizations on campus with an increasing number of activities planned to accommodate the interest here at Lawrence. An interest in the field of astronomy is the only requisite for membership in the club.

SOCIETY OF INDUSTRIAL ENGINEERS



OFFICERS

Chairmen.....

Felix Polan, Carl Lofstrom, Bruce Lyon

Vice-Chair.....John Hansen, Stan Lewis

Secretary.....Vivus Dorwin

Treasurer.....Charles Swanson

Standing (Left to Right); Charles Swanson, Bruce Lyon, Carl Lofstrom, Vivus Dorwin, Stanley Lewis.

Seated (Left to Right); Prof. L. C. Bagby, Felix Polan, Dr. Edwin Graeffe.

The purpose of this organization is primarily to facilitate the exchange of knowledge in industrial engineering problems and to give the student engineer a clearer understanding of how such problems are met and dealt with in actual practice. The society also keeps abreast of new ideas and important events in the industrial field.

This has been done in the past by tours through local industrial plants, lectures by men who are engaged in this type of work, literature from various companies and State examinations for registered engineers.

At present the Industrial Society is in the process of reorganization. The primary purposes will, of course, remain the same and many of the old functions will continue as in the past. Fortunately, however, there is expected to be a broader and more complete coverage of interesting material available to all members of the society.

Prof. L. C. Bagby, Industrial Engineering department head, and Dr. Edwin Graeffe, Dean of the Business Administration School, are faculty advisors for the society.

CIVIL ENGINEERING SOCIETY



Left to Right: Ray Snooks, Ray Tygielski, Robert Pangburn, and Ray Pensak.

OFFICERS

President	Robert Pangburn
Vice-President	Raymond Pensak
Secretary	Raymond Snooks
Treasurer	Raymond Tygielski

Membership in the Civil Engineering Society at Lawrence Tech has become a "must" for students majoring in the field of Civil Engineering. The society has been instrumental in the development of the Civil Engineering department and has done much to advance the required relations between classroom work and the latest developments in the field.

Field trips during the past year have taken members out to actual job sites where professional methods and techniques can be observed and made valuable to the engineering student.

The members also carry out experimental tests and prepare soil specimens for use in the laboratory sessions. The compilation of data of this nature has proved invaluable to the student as well as the engineer in the field.

Affiliation with professional groups and the obtaining of current periodicals and data have been another important factor in bringing about closer ties with the latest practices.

The society is primarily technical and membership is open to all students majoring in civil engineering. The group functions through the Civil Engineering department with Mr. McClurg currently acting as its faculty advisor.

INSTITUTE OF AERONAUTICAL SCIENCES

Student Branch

OFFICERS

Chairman Roy Heady
Vice Chairman Russ Chambers
Secretary-Treasurer Joseph Chalk
Recording Secretary.....Tom Campbell



Standing (Left to Right); Tom Campbell, Joseph Chalk, Adam Shostak, Walter Brown, George Popa, Jack Walden, Wm. Payne, and Carlton Ambler. Seated: Mr. Martin, Roy Heady, Russ Chambers, and Mr. Locklin.

The rapid growth of the Aeronautical Engineering Department at Lawrence Tech gave rise to the need for an organization of professional standing for the advancement and dissemination of knowledge of the theory and practice of the aeronautical sciences.

The Lawrence Tech Student Branch of the I.A.S. has been very active in the encouragement of professional consciousness by presenting films, sponsoring lectures and attending national discussion meetings.

Some of the films presented during the past year have featured the theory and characteristics of rockets, jets and gliders. Highlight of the year's activity was the Second Annual Dinner at the Rackham Engineering Memorial in conjunction with the Tri-University Aeronautical Paper Competition.

LAWRENCE LENS MEN

OFFICERS

President Louis Sibal
Secretary Robert Lund
Treasurer John Moran



Left to right: Louis Sibal, John Moran, Robert Lund.

The Lawrence Lensmen camera club was re-organized in September 1948, after it had remained dormant for two years. The main purpose of the club is to acquaint interested students with photography and supply them with a suitable darkroom in which to develop the proper photographic techniques.

At the present time the club has a darkroom with a complete line of accessories for the amateur photographer. In the past lectures have been held to familiarize the members with the basic fundamentals of photography. Meetings are held regularly but are open to members only.



SOARING SOCIETY



Standing (Left to Right); Wm. Payne, Bill Stairs, Adam Shostak, James Svenson, Roy Heady, and Tom Campbell. Bottom row; Robert Lemon, Charles Vranian, Mr. Martin, Mr. Erneman, and Mr. Locklin.

OFFICERS

President Charles Vranian
Secretary Thomas Campbell
Treasurer Robert Lemon

Since its inception in 1946, the Lawrence Tech Soaring Society has made enviable progress in the advancement of motorless flight at Lawrence Tech. The present society, under the sponsorship of Prof. George Martin, is a re-organization of the pre-war Soaring Society.

Beginning with a limited amount of materials and facilities, the Soaring Society has constructed and flown a Midwest utility glider, now being used for training purposes. The Society has acquired a set of wings for converting the present glider to an intermediate sailplane. Plans are now being made for the construction of a second fuselage for use with the sailplane wings. This will make it possible for the society to represent the school at the National Soaring Meet during the summer of 1949.

The members are now eagerly attempting to log sufficient flights to obtain their private licenses. They hope to accomplish this feat by summer of 1949 to enable the society to sponsor an intercollegiate gliding meet, a project which all the members are anxious to see realized.

The society has many other plans for the future, plans which, it is felt, will make the Lawrence Tech Soaring Society the most active and progressive organization in this area, and truly an asset to Lawrence Tech.

The glider group poses in front of their Midwest utility glider before a flight at the Windsor Airport. This glider was designed and built at Lawrence Tech. Standing (left to right): Russ Chambers, Dave Paver, Roy Heady, Wm. Payne, Adam Shostak, James Svenson. Kneeling: Charles Vranian, Bill Stairs, and Bob Lemon.



SOCIETY OF AUTOMOTIVE ENGINEERS

ChairmanJoseph Ouellette
Vice-Chair.....Al Ratush, Doug Thornton
Secretary.....Bruce Polkinghorne
Treasurer.....John Goulasarian



Standing (Left to Right); Bruce Polkinghorne, Al Ratush, John Goulasarian.

Seated (Left to Right); Doug Thornton, Joseph Ouellette, Dr. G. P. Brewington (Faculty Advisor).

One of the most important functions of the S. A. E. is to give the engineering student an opportunity to serve himself, the college, the society and the engineering profession. This objective is accomplished by active participation in the student organization, by attending technical meetings with outstanding men from business and industry as speakers, and by keeping abreast of the latest technical developments in the transportation field through the S. A. E. Journal and technical papers.

The Lawrence Tech Student Branch of the S. A. E. is the largest organization on the campus and one of the largest student branches in the world.

Dr. Gail P. Brewington of the physics department was instrumental in the forming of the organization at Lawrence Tech and acts as its faculty advisor.

OFFICERS

STUDENT



Left to Right; Don Bolle, Gerard Burke, Robert Fontaine, and Richard Macan.

President.....
 Vice-President.....
 Secretary.....
 Treasurer.....

The Student Council was organized to provide a group that would be truly representative of the student body and of the established organizations in the school. The Council also provides a means of expression for the opinions of all members, singly or collectively, towards the end of self-government.

In addition to its legislative, executive and judicial duties the Council also controls Lawrence Tech's campus publications, regulates all social activities, selects candidates for the Lambda Iota Tau Honor Society and awards activity keys to deserving members of the various organizations.

A seat on the council is authorized for all classes, clubs, fraternities and recognized student organizations having thirty-five or more members.

The President is elected in a school-wide poll and inaugurated at the annual banquet where the Council is host to President Lawrence and the department heads.

Mr. Edmund Jositas, representing the faculty and administration, acted as faculty advisor for the past year.

CLASS REPRESENTATIVES

ACTION ON THE FLOOR



Standing (Left to Right); Chuck Gibson (Pres. Day-Soph), Skip Drane (V. P. Day-Frosh), Walt Brown (V. P. Day-Sr.), Bill Dryburgh (Pres. Day-Sr.), Walt Richardson (Pres. Day-Frosh), Irv Rudolph (Sr. Honor Soc. Rep.).
 Seated (Left to Right); Al Prevost (V. P. Day-Soph), John Erickson (Pres. Day-Jr.), Robert Fontaine (V. P. Day-Jr.), George Ferguson (V. P. Night-Frosh), Otto Jensen (Pres. Night-Frosh).



Don Bolle clarifies some rule of action as part of his duties on the Judiciary Committee.

COUNCIL

..... Gerard Burke

..... Donald Bolle

..... Richard Macan

..... Robert Fontaine



Secretary Richard Macan looks on as Prexy Gerard Burke makes like Harry T.

CLUBS AND ORGANIZATIONS



Left to Right; Edw. Kennedy (SAE), Jas. Timm (CES), Jas. Wilson (Varsity Club), Harold Price (Tech News), and John Lauer (Member-at-Large).

FRATERNITIES



Left to Right; Herb Cromwell (KSK), Don McIntyre (AGU), Bruce Polkinghorne (PKU) and Dick Larkins (RDP).

REPORTING



William Finlayson and Jim McMenemy

RE-WRITE



Edward Kuzel

GALLEY PROOFS



Richard Larkins and Bob Lund

No corner of the school escapes the prying eyes of the Lawrence TECH NEWS. A steady stream of information pours into the TECH NEWS Office daily to be channeled into columns of newsprint. The editorial staff picks out the facts, dolls them with a headline, garnishes the news with a few pictures and the result is the eight page bi-weekly tabloid that functions as the school newspaper.

These efforts were ably guided by Editor Harold Price. Harold was assisted by Edward Chester, Wallace Croll, and Dick Larkins who filled the more responsible editorial positions on the staff.

Leo Berlin and L. John Hocking handled the photographic assignments, George Mulligan held up the business end of the publication and Herbert Cromwell did a fine job in handling the circulation department. Mr. Carl Einhorn of the English Department was the faculty advisor.

Top news story of the year was the account of the acquisition of the aircraft engine testing building, which the school had acquired from the War Surplus Board. Headlines from the TECH NEWS for the last year would read like a roll call of name bands, thanks to the ambitious policy of the Athletic Department.

The TECH NEWS acting as a function of the student council consistently presented the students' viewpoint with a broad-minded scope of "both sides of the question."

PAGE MAKE-UP



Editor Harold Price

NEWS

EDITORIAL STAFF

TECH NEWS STAFF

EditorHarold B. Price

Associate Editor.....Richard Larkins

Day EditorWallace Croll

Reporters: Al Ratush, Ed Kennedy, Lee Cromwell, Michael Yugovich, Elbert Matthews, Bob Dean, Bill Finlayson, James Hobson, Edward Kuzel, Roy Lewis, and Therese Shepard.

Sports EditorBob Lund

Reporters: Dale Miller, Dick Souder.

Photographic EditorLeo Berlin

Photographers: L. John Hocking, Edward Weidel, and Richard Macan.

Business Mgr.....Geo. V. R. Mulligan

Circulation Mgr.....Herb Cromwell

Staff: Martin Villa, Osie Jackson, Jack Cooley.

Faculty Advisor: Mr. Carl Einhorn.



Standing behind Editor Harold Price are (Left to Right): Wally Croll, James Wilson, Richard Larkins, Bob Lund and Leo Berlin.

ADVERTISING MANAGER

DISTRIBUTION



Left to Right: Herb Cromwell, Martin Villa, Jack Cooley, and Osie Jackson.



George V. R. Mulligan

TELEVISION SOCIETY

OFFICERS

ChairmanClark Quinn
Vice-ChairmenWm. Deitrich
..... Steve Ambrozy
.....Joseph Musial



Left to Right; William Deitrich, Steve Ambrozy, Clark Quinn, and Joseph Musial.

The Lawrence Tech Television Society consists of a group whose main interests are the technical details of television, receiving and transmitting practice. They have built their own receivers and are currently working on a high frequency transmitter. They have built all their own testing and checking equipment, most of which during the time when materials were very hard to get and most items were made by hand from the basic raw materials.

Membership is not limited to Lawrence Tech alumni, for students and several outsiders have joined. The group has been in existence slightly over 10 years and has pioneered the use of television in education. The complete presidential inauguration was received on a projection type receiver, both at Lawrence Tech and at the Lincoln High School in Van Dyke, Michigan. The work done is entirely voluntary on the part of members as well as the support of the organization and its equipment. Meetings are held the first and third Thursday of each month.



VARSITY CLUB

OFFICERS

PresidentRichard Sinko
Vice-PresidentKen West
Secretary-Treas.....Richard Yassenchak



Left to Right: Ken West, Dick Sinko and Richard Yassenchek.

The Varsity Club is an organization consisting of letter winners in the various intercollegiate sports engaged in by the Lawrence Tech Blue Devils.

The purpose of the club is to promote good sportsmanship and to create a goal for all undergraduates to work toward in their athletic endeavors.

The principal duty of the club is to award varsity sweaters and pins to letter winners in all sports. Graduating members of the varsity club are given emblem blankets by the club.

The highlight of the season's social functions was the huge banquet held at one of the downtown hotels honoring the outstanding athlete in each sport. Noted sport celebrities were speakers at the banquet.

THE 1949

The Lawrence Tech L-Book, that final and most prized addition to every Techman's library, is proof for their coming generations that at least Daddy was exposed to a formal education.

The make-up and compilation of copy for this year's annual was accomplished with the mutual cooperation of each and every staff member. Frank Marra as Editor with the able assistance of an editorial staff composed of Sam Dabich, Floyd Little, Charles Gray, and Jack Beamish have each contributed a proportionate share of their time and efforts towards the common goal: that of presenting, in behalf of the Senior Class, a year book worthy of the extensive activities and concerted efforts of the students of Lawrence Tech.

The staff expresses its sincere and humble thanks to the many organizations and active groups that cooperated in the completion of this year's book.

In addition to the editorial staff the diligent labors of Photographic Editor L. John Hocking, Sports Editor Walter Bazylewicz, and Faculty Advisor Mr. Carl Einhorn, can only be realized by being on the staff of a publication such as the L-Book.

We, the staff, submit this book to you, the Graduate and Undergraduate members of the student body, in hope that it fulfills its purpose; that of recording for posterity the pleasant and fond memories coupled with the persistent striving for knowledge of your college days. Someday in the far future, may you shed a tear over the wilted and dusty pages in fond recollection of the days "back at Lawrence."



L. John Hocking
Photographic Editor



Mr. Carl Einhorn
Faculty Advisor



Walter Bazylewicz
Sports Editor

L-BOOK STAFF

Pictured at the right is the editorial staff of this year's L-Book. Editor Marra's downcast gaze may be interpreted as his own humble acknowledgment of the forthcoming completion of the year book. The smiling faces of his confident staff pulled him through the many dark and seemingly hopeless moments of the "supreme task."



Left to right: Charles Gray, Frank Marra, Floyd Little, and Sam Dabich.



James Wilson
Distribution Manager



Jack Beamish
Copy Editor

The Greeks followed the maxim that a "sound mind in a sound body" was the best formula for success. This has been carried over into the life of the Lawrence Tech student. After pursuing full schedules during the week, the men pictured on the following pages have found time to devote themselves to basketball, baseball, fencing, golf and other sports as representatives of the school.

It is a natural truism that the impression given by a college team to the general public is often the sole impression of the school that the public retains. In fostering favorable impressions and in awakening a lively school spirit, the Blue Devil teams have been more than successful. Their exhibitions of good sportsmanship and fair play, winning or losing, have enhanced the reputation of the school they represent and have developed the respect of their opponents.

SPORTS



ATHLETIC DEPARTMENT

DON RIDLER
Athletic Director
and
Basketball Coach



Dave Anderson
Golf Coach



Ralph C. Emig
Tennis Coach



Walter Bazylewicz
Baseball Coach



James Campoli
Fencing Coach



BASKETBALL

The 1948-49 basketball season, packed with spine-tingling thrills, found the Blue Devils of Lawrence Tech with a season record of 15 victories as compared to 10 defeats.

The Blue Devils had played the toughest schedule in the school's history and proved itself a basketball power to be respected by large universities and state colleges.

Following the successful pattern of the 1947-48 season, Athletic Director and Coach, Don Ridler presented the Detroit sport fans as well as Lawrence Tech students with a season of big name basketball contests along with many evenings of sparkling entertainment. Once again through the auspices of Charles Bauervic and Arlington Motors the Tech home contests were broadcast by Al Nagler and televised over WWJ-TV.

The basketball season, in conjunction with its great entertainment program, started off with a bang on Dec. 3, 1948, when the Blue Devils played host to Carnegie Tech. The Blue Devils outscored the Tartars by a score of 55-44. The brilliant post-game stage show featured Louis Armstrong, Ethel Waters, Fletcher Henderson, Jack Teagarden and the Day, Dawn and Dusk Trio.

Coach Don Ridler's dream of Lawrence Tech having a big time basketball team was realized to some extent, as 9,300 fans jammed the State Fair Coliseum to witness this game and the entertainment program.

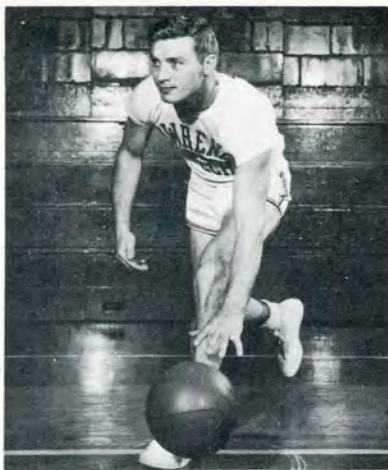
The Blue Devils continued their winning ways by trouncing Tri-State College of Indiana 83-43 at Hackett Field House.

In the third game of the season Tech's rampaging Blue Devils, led by senior Carl Campbell, defeated the North Dakota State Bisons by the sound score of 65 to 52. The 6,000 fans that witnessed the





Norman Hankins
Captain



Dave Talbert



Carl Campbell



Tech victory were treated to a piano recital by the nationally famous Jan August.

In the fourth game L.I.T. took on another state college of the West. The South Dakota State Coyotes gave the boys a fight to the finish but again led by Campbell, the Blue Devils emerged victorious by the score of 55-51. Buddy Moreno and his orchestra, and a great stage show, were on hand following the game to round out the evening.

The powerful Arkansas State team invaded the Coliseum, only to have their dreams of victory snapped. The game ended with Tech on top to the tune of 64-54. The entertainment followed with loyal students and fans enjoying Leroy Smith and his Chocolate Revue.

In the sixth game of the season Tech played South Carolina University. Once again the Blue Devils court formula proved effective as another victory was chalked up—66-53.

The seventh victory came after a hard fought 45-43 encounter with the University of Colorado. Walt Maconochie came up with the winning basket with five seconds remaining in the contest. Walt's sensational 40 foot shot received the thunderous approval of the packed Coliseum. The evening also brought the music of Ray Garrell and his orchestra coupled with an entertaining stage show.

The sensational New Year's Eve Party was a huge success as Tech downed the University of Delaware quintet, 66-48. Gene Krupa and his orchestra supplied the music for 6,000 dancing people who greeted the New Year in and cheered out the old. This fabulous party was complete with balloons, noisemakers and all of the trimmings necessary for such a gala celebration.



At this point in the season, Lawrence Tech was on the exclusive list of unbeaten major colleges with only twelve others having survived defeat.

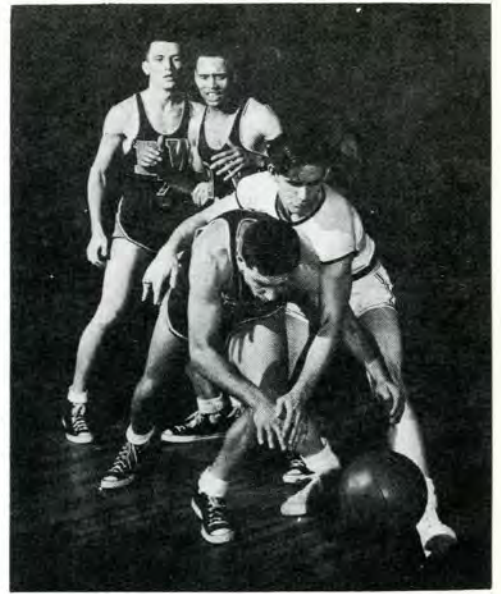
On January 6 the Blue Devils took their first road trip of the season. The squad traveled by plane and the take off, via the American Air Lines, was a shaky one. The entire squad felt the wind squalls all the way to Syracuse. The results at Hartwick College were just as sickening as Tech ran into a foul-calling spree which saw a total of 34 personals called against the Blue Devils who had averaged about 12 personals a game previously. In the end Hartwick edged out Tech 73-68.

At Syracuse on January 8, Tech ran into a red hot team which hit over 70 per cent of shots taken. The final score indicated as much with the Syracuse Indians victorious by a 91 to 39 margin.

The Blue Devils returned to slap down Tiffin University 84-47 and to take on one of the nation's leading quintets in Baldwin-Wallace University. The Yellow Jackets were red hot, having just downed the national invitational finalist, Bowling Green University, and the leading team of the East, namely, La Salle College. L.I.T., who walked on the court as the underdog, toppled the powerful Baldwin-Wallace team in a breath taking game. Dave Talbert pulled a "Maconochie" and popped in a basket with five seconds remaining in the overtime period giving Tech a stunning upset victory.

The 12th victory in 14 starts, came at a cost to John Carroll University. The Blue Devils produced another thriller as the score indicates. Tech 69 — John Carroll 68.

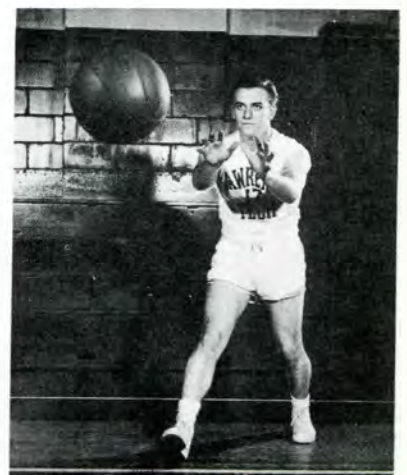
January 29 found the Blue Devils in new surroundings. Lawrence Tech forced to vacate their home court at the Coliseum, squared off against Niagara University at the Olympia stadium. This game furnished a thrill a second



Jim Stepler



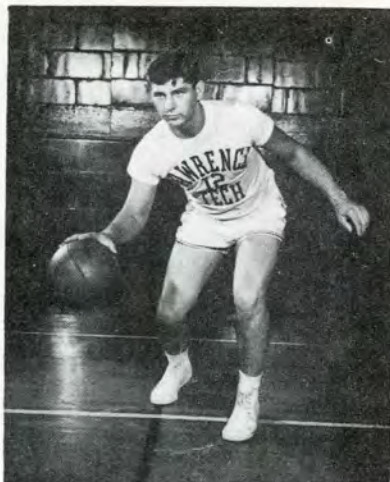
Walt Maconochie



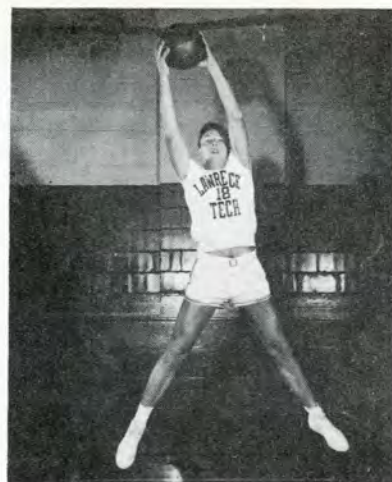
Chuck Cacicedo



Johnny Polance



Joe Knurek



Bob Ulles



as it ventured into a double overtime before Niagara managed to best the Blue Devils 72-70 for Tech's third loss in 16 starts.

Tech hit the road after this classic at Olympia. The Blue Devils failed to change their road luck as they bowed to St. Bonaventure 47-36 at the Memorial Auditorium in Buffalo, New York.

The Blue Devils on a Southern swing were tripped up by Florida University 64-58 in their third overtime battle of the season. Then the first road victory came as Tech downed John Stetson 71-67. The next evening the Blue Devils managed to quell their "road-trip-jinx" and defeated Florida Southern 72-58.

The fourth game of the Southern Invasion found the Blue Devils tiring as they were downed by Tampa University 66-61 after holding the lead for 37 minutes of play.

Cumberland College of Nashville, Tennessee, was easy prey as the Blue Devils rolled on to win 94-57 with the entire squad figuring in the scoring.

The toll of playing ten games in seven days proved too much as Lawrence Tech bowed to a scrapping Tennessee Tech team 64-59.

The long trip home after the Southern Swing found the Blue Devils facing St. Bonaventure after but one day of rest. The visitors' slow tantalizing style of play subdued the Tech cagers as they wound up on the short end of a 58-41 score.

Led by senior Norm Hankins, Lawrence Tech recovered their vim and downed the University of Virginia quintet 71-56.

Creighton University took the honors at the close of the regular season by edging Lawrence out with a close score of 45-41.

Lawrence Tech climaxed the season with an invitation to represent the State of Michigan in the National Inter-Collegiate Basketball Tournament at Kansas City. This marked the third successive year and the fourth time in six years that Lawrence Tech had been selected to represent the State. Tech fought a terrific battle but lost to San Jose College of California 63-52.

The end of the 1948-49 basketball season at Lawrence Tech left the Blue Devil fans with applause and praise for the team, Coach Don Ridler and a successful sports program.

1948-49 SEASON RECORD

Lawrence Tech	Opponents
55	Carnegie Tech 44
83	Tri-State (Ind.) 43
65	North Dakota State 52
55	South Dakota 51
64	Arkansas State 54
66	South Carolina U. 53
45	Colorado State 43
66	Delaware 48
68	HARTWICK 73
39	SYRACUSE U. 91
84	Tiffin 47
64	Baldwin-Wallace 63
63	Tri-State 55
69	John Carroll U. 68
70	NIAGARA 72
36	ST. BONAVENTURE 47
58	FLORIDA U. 64
71	John Stetson 67
72	Fla. Southern 58
61	TAMPA U. 66
94	Cumberland 57
59	TENNESSEE TECH. 64
41	ST. BONAVENTURE 58
41	CREIGHTON 45

N.A.I.B. Tournament
Kansas City, Missouri

Lawrence Tech 52

San Jose 63



Jim McHale



Ray Chojnowski



Ray Khoury

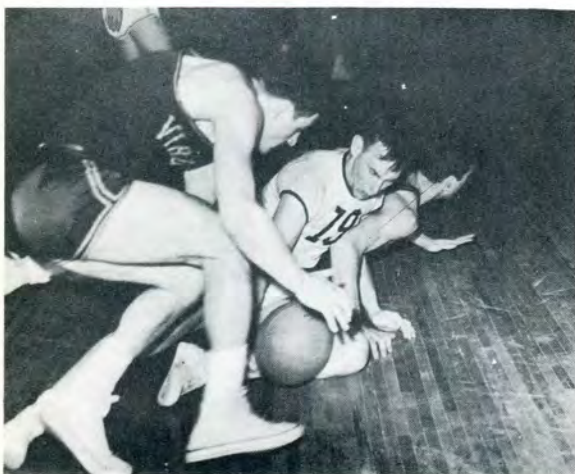


Gene Proch



Ray Mawhorter

AT HOME . . .



Jim Stepler hits the deck in a mad scramble for a loose ball.



President Lawrence gives out with cheer as Mrs. Lawrence beams approval.

. . . AND AWAY



Tech's Blue Devils and Coach Ridler shove off for their "Southern Invasion" . . .



. . and after arrival found "Doc" Graeffe on hand to be sure it wasn't "all play and no work."

FROSH BASKETBALL



Top row: Coach Bazylewicz, Gene Khoury, Lee Houtteman, Bob McManamay, Emil Jones, Blaine Der-
ning. Bottom row: Tom Grove, Roger Adams, Barney Petty, Doug Ross, Sam Smith, Gene Wagner.

Lawrence Tech's Little Blue Devils had a successful season, winning eighteen of twenty starts.

The Frosh team played the preliminary games to the Varsity home schedule. The early attending fans were provided with many thrills as the future Varsity displayed a fine style of basketball.

The highlights of the season were victories over Highland Park J. C., Flint J. C., Hillsdale J. V., Michigan Normal J. V., and University of Michigan J. V.

1948-49 FROSH SEASON RECORD

Lawrence Tech	Opponents	
46	Southeastern A. S.	38
47	Adam Motors	25
59	Annunciation C.Y.O.	41
55	Highland Park J. C.	36
40	HILLSDALE J. V.	51
59	Grosse Ile Naval	24
58	First Presbyterian	24
54	El Toro A. C.	44
52	Trinity Methodist	40
57	Michigan Normal J. V.	48
79	St. Benedict C.Y.O.	40
44	MICHIGAN NORMAL J. V.	47
62	Allen Club	42
76	Grosse Pte. A. S.	60
83	Grosse Ile Naval	27
59	Univ. of Michigan J. V.	49
51	Hillsdale J. V.	39
61	Flint J. C.	43
51	Univ. of Michigan J. V.	40
63	Resurrection C.Y.O.	42

One Hundred-seventeen

BASEBALL



Standing (left to right): Joe Knurek, Bill Bowman, Ray Mawhorter, Ray Chojnowski, Bob Ulles, Coach Bazylewicz, Jim Loepp, John Fontanesi, Bill Di Bartolomeo, and Don Jendrusch. Bottom row: Felix Polan, Don Harlow, Edmund Wojciechowski, Lillard Cobb, Dick Sinko, Irv Cohen, and Bob Theisen.

The 1949 season brings out a team composed chiefly of veterans under the tutelage of a new coach, Walt Bazylewicz. This is Walt's first venture into the realm of squeeze plays, cut-off plays, batting orders, temperamental ball players, and the lingering headache of starting pitchers. Spring drills have shown that Bazylewicz is quite capable of moulding a spirited, winning team from the ranks of returning varsity letter winners.

A brief tour of the diamond reveals the following players and their respective positions.

The pitching staff is led by southpaw Lillard Cobb and two snappy righthanders, Jimmy, "ala Blackwell," Loepp and Ray "boom boom," Mawhorter. For the important relief roles; Lefty, Bill Bartolomeo, and newcomer, Bob Ulles, round out a well-balanced staff.

Behind the plate the catching duties are shared by Bill Bowman, spark-plug of the Blue Devil squad, and Don Harlow, who is playing his first season with the varsity.

Around the horn we have Dick Sinko, whose freak accidents are synonymous with his first base position. An unbeatable keystone combination composed of Bill Hane, a valuable clutch player, and Ray, "Spider" Chojnowski, a smooth fielder and hitter. At third base are two capable veterans, Bob Theisen and Irving Cohen. For added strength a new addition, Don Jendrusch, serves as utility man about the infield.

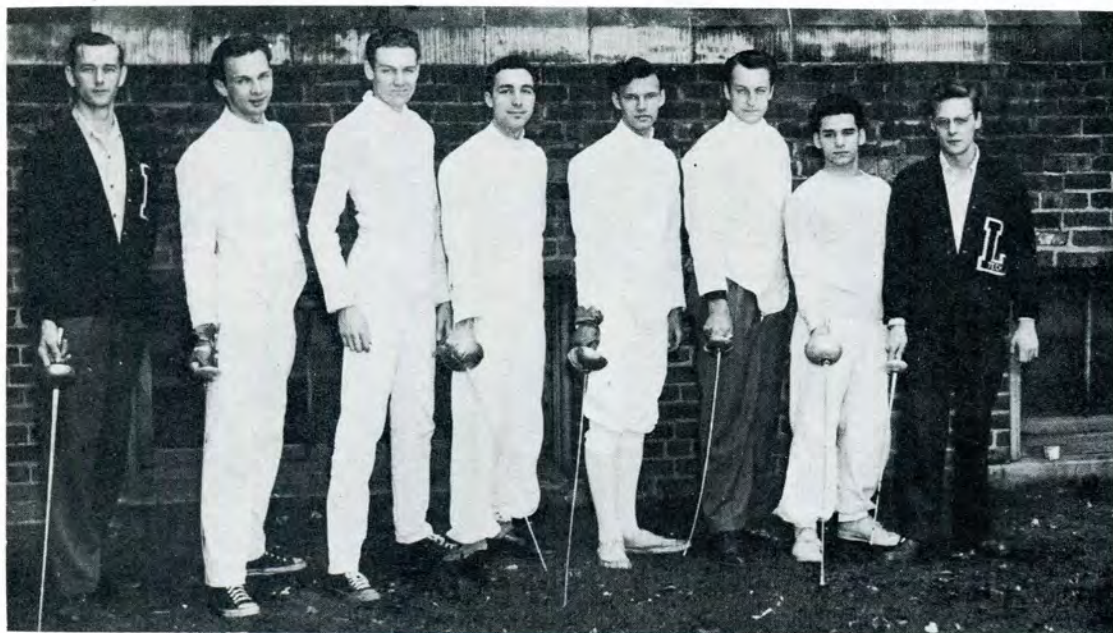
Looking out to the Blue Devils' outfield, we find Edmund Wojciechowski, a colorful left fielder with a mania for vicious hitting; "Big John" Fontanesi, a hard hitting right fielder, and Felix "the cat" Polan.

The 1949 season will offer a real test to the Blue Devil squad as can be seen from the following schedule:

April		L.I.T. Opp.	
14	Michigan Normal (there)	3	6
18	Hillsdale (home)	Rained out	
26	Bowling Green (there)	0	13
27	Wittenberg (there)	Rained out	
28	Dayton (there)	12	7
May			
4	Michigan Normal (there)	10	17
7	Bowling Green (home)	4-7	3-12
9	Tri-State (home)	12	3
14	Calvin (home)		
20	Ferris (there)		
21	Ferris (there)		
28	Tri-State (there)		



FENCING



Left to right: Paul Engle, Leon Yulkowski, Earl Williams, James Campoli (Coach), Dick Yasenchak, Richard Stickley, Al Petrilli, and Tom Howell.



The past season revealed the fencing team in its strongest position since its inaugural after the war. It has been organized on a self-sustaining basis with the team members coaching new candidates. This eliminated the dependency of the team on any one individual and resulted in finer skill on the part of all team members involved.

The training of freshmen helped fill the gap left by the loss of three varsity members of the team through graduation.

The team completed the season with an enviable record of six victories to one defeat. The loss to the University of Illinois marked the first time the electrical epee had been used by the Lawrence Tech team.

The closing out of this season brings to a close Coach Jim Campoli's collegiate fencing competition. He organized and coached the team during his three years of competition and was instrumental in establishing Lawrence Tech as a fencing power. He was ably assisted in his coaching duties by Dick Yasenachak who will foster the team after Campoli's graduation.

Yasenachak has achieved a perfect record for this past season chalking up 21 individual victories without a defeat. This record is unequalled in the entire MidWest collegiate fencing circle.

Along with a winning season of collegiate competition, Tech fencers have been highly successful in State fencing tournaments, winning nine out of eleven contests.

INDIVIDUAL SEASON RECORD

	Bouts		Average
	Won	Lost	
FOIL			
Yasenachak	18	0	1.000
Yulkowski	11	7	.612
Donohue	10	8	.556
SABRE			
Campoli	17	1	.945
Stickely	11	7	.612
Klei	11	7	.612
EPEE			
Engle	13½	4½	.750
Williams	6	12	.333
Petrilli	4	14	.222

TEAM SEASON RECORD

Foil	39	15	.724
Sabre	39	15	.724
Epee	23½	30½	.436



Coach James Campoli



GOLF



Standing (left to right): Harold Helms (Captain), William Kargetta, George Warner, and Bob Lund. Bottom row: Pete Gurski, J. MacDonald, and Al Tunia.

Harold Helms and George Warner, Tech's two mainstays, are this season's major hope for a good showing. Of the first five games played this season Tech's Blue Devils can boast but one victory.

The victory over Michigan Normal marked the first time in fifteen years that Tech has come up victorious over the golfers from Ypsilanti.

Last season Helms' polished performance netted him a record of 10 victories, one defeat and one tie game. His action in the early sessions of this season's schedule indicates this record may be bettered.

The schedule this season is set up as a challenge with Tech meeting the rougher competition in the earlier games. Six of the scheduled eleven games remain to be played at this writing.

TEAM SCORES

	L.I.T.	Opponents	
April 26	7½	Alma	10½
April 28	5½	Hillsdale	12½
April 30	10	Michigan Normal	8
May 2	1½	Canisius	21½
May 3	7½	Niagara	8½
May 6	Tri-State
May 7	Heidelberg
May 10	Alma
May 12	Detroit Tech
May 19	Detroit Tech
May 28	Tri-State

TENNIS



Back row (left to right): John Landis, Don Ryder, Ed Larson, and Harry Braga.

Front row (left to right): John Blossom, Ralph Emig (Coach), and Marvin Smith. Not pictured: Adolph Swiecki, Mike Kosowan, and Ted Malpass.

This year's tennis team, under the expert tutelage of Coach Ralph Emig, jumped into their schedule by capturing victories in four of the first five games scheduled. With veteran Blue Devil court-masters as John Blossom, Harry Braga, Don Ryder, and Marvin Smith returning and talented additions like John Landis and Adolph Swiecki, Tech's racketeers have shown victories over Ferris, Hillsdale, Canisius, and Niagara.

With five of the season's ten scheduled games played at this writing the Blue Devil's only threat to a victorious season lies in the match with Calvin, who have handed Tech their only defeat to date.

Veteran John Blossom entered this season showing better court action and will probably complete the season undefeated. Harry Braga's fine form has made him a consistently unbeatable mainstay of the squad. This season also showed Don Ryder as the most improved player on the squad.

Top doubles combination for the season were composed of: Blossom and Smith; Braga and Ryder; and Landis and Swiecki.

TEAM SCORES

	L.I.T.	Opponents	
April 15	8	Ferris	1
April 26	1	Calvin	8
April 28	6	Hillsdale	3
May 2	7	Canisius	2
May 3	8	Niagara	1
May 6	Tri-State
May 7	Calvin
May 12	Highland Park J. C.
May 19	Highland Park J. C.
May 24	John Carroll Univ.

RIFLE TEAM



Standing: (left to right): Jim Whately (Coach), Lew Alward, Ray Jupp, Bob Dean, Lee Brooke, and Carl Thompson. Bottom row (left to right): Ray Keranen, Ralph Wilhelm, Jim Cumming (Captain), Tom Howell, Richard Macan, and Richard McBrien. Not pictured: William Finlayson.

Tech's Rifle Team completed this year's season of rough competition with a season record of nine wins and five losses in their postal matches while losing the three scheduled shoulder-to-shoulder matches.

This season's team showed victories over Iowa State, University of Dayton, Harvard, University of Wisconsin, Cornell, Louisiana State, and University of Alaska. The three shoulder-to-shoulder matches, which were all played away, were lost to Ohio State University, Michigan State, and University of Michigan.

The five high men for the season who will receive varsity letters are Lee Brooke, Jim Cumming, Ralph Wilhelm, Bob Dean, and Tom Howell.

Team scores for the postal matches are compiled by running off a practice elimination of the members of the Rifle Club. From the resulting scores the ten competing members are chosen. Of these ten men the five best scores are chosen for competition in the match.

TEAM SCORES

L.I.T.	(Postal Matches)	Opponents
1805	Iowa State	1782
1805	Univ. of Dayton	1798
1338	Harvard	1330
1338	Georgia Tech	1400
1355	Univ. of Wisconsin	1349
1355	Univ. of Washington	1394
1354	Michigan Tech	1362
1355	Cornell	1350
1369	Louisiana State	1259
1369	Kenyon College	1330
1364	Penn State	1404
1380	Univ. of Cincinnati	1404
1380	University of Alaska	1351
1384	Calif. State Teachers	1271
	(Shoulder to Shoulder)	
1272	Ohio State University	1358
1320	Michigan State	1361
1247	University of Michigan	1292

THE 1949 L-BOOK



Covers by . . .

S. K. SMITH CO.

CHICAGO, ILLINOIS



Printing by . . .

ARONSSON PRINTING CO.

2001 WEST LAFAYETTE BOULEVARD

DETROIT, MICHIGAN



Graduates' Photos by . . .

H Y F I S H E R

TYler 5-7021

3411 ATKINSON

DETROIT, MICHIGAN

MOTOR PRODUCTS CORPORATION

11801 MACK AVENUE

DETROIT, MICHIGAN, U. S. A.

EDUCATION *is Our Business, Too!*

- DANGER SIGNALS
- EARLY DIAGNOSIS
- PROMPT TREATMENT

—
**AMERICAN CANCER
SOCIETY**

4811 JOHN R

DETROIT

Are You Engineers?

The World desperately needs engineers today—with vision, integrity, accuracy, resourcefulness and courage. The engineer's task is that of building the structure of civilization and of ever increasing man's productiveness. Young men, there is your challenge. Are you to become engineers?

**NATIONAL BROACH &
MACHINE COMPANY**

5600 ST. JEAN

DETROIT, MICH.

ENGINEERS

TO DESIGN IT

ENGINEERS

TO TOOL IT

ENGINEERS

TO GET PRODUCTION STARTED

ENGINEERS

TO KEEP PRODUCTION FLOWING

PIONEER ENGINEERING & MANUFACTURING CO.

ENGINEERS — CONSULTANTS — DESIGNERS — PRODUCTION ENGINEERING SPECIALISTS
TOOLS — DIES — SPECIAL EQUIPMENT

19669 JOHN R

DETROIT 3, MICH.

Pioneering Better Production Methods

CAMPBELL CONSTRUCTION CO.

*Industrial Building Engineers
Complete Building Service*

3255 GOLDNER
TA. 5-2710

ESSEX WIRE CORPORATION

*Magnet Wire • Automotive Wire
and Cable*

14310 WOODWARD AVENUE
HIGHLAND PARK

MALLORY RESEARCH CO.

12416 CLOVERDALE

HIGHLAND PARK MOTORS

TOwnsend 8-3300

13324 Woodward Highland Park, Mich.
Nights, Sundays and Holidays Call TE. 1-6033

W. T. ANDREW CO.

PLUMBING SUPPLIES

15815 HAMILTON AVENUE
TOwnsend 8-4288

Compliments of

F O R T DIE CASTING CORP.

897 Lawndale Ave.
DETROIT, MICHIGAN

OVERHEAD CONVEYOR CO.

944 E. Congress St.
DETROIT 7, MICHIGAN

THE PIONEERS

of tool and die
WELDING ELECTRODES



... can help you save **4** ways

Save many man hours, conserve valuable tools and dies and minimize production delays with the aid of EUREKA TOOL and DIE WELDING ELECTRODES. Here's how it can be done:

- 1** REPAIRING DIES. . . . Existing units that may fail in operation can be EUREKA welded, either partially or wholly, resulting in a minimum of "down-time."
- 2** COMPOSITE FABRICATING. . . . Die units can be compositely fabricated, when practical, by EUREKA welding, resulting in numerous advantages.
- 3** CORRECTING DESIGN. . . . EUREKA welding facilitates making changes in contour, corners or edges during die "try-out" or "change-over" periods.
- 4** RECTIFYING ERRORS. . . . EUREKA welding permits the correction of errors made in tool and die manufacturing, resulting in great savings. *Write for Literature*

WELDING EQUIPMENT & SUPPLY CO.
225 LEIB STREET • DETROIT, MICHIGAN

Congratulations and Best Wishes

DOUGLAS & LOMASON CO.

5836 Lincoln Avenue
DETROIT 8, MICHIGAN

Compliments of

The Greater City Council

of The

Armenian Relief Society

Compliments of

CAMERON-FREDERICKS

PHOTO SERVICE

VE. 5-2687

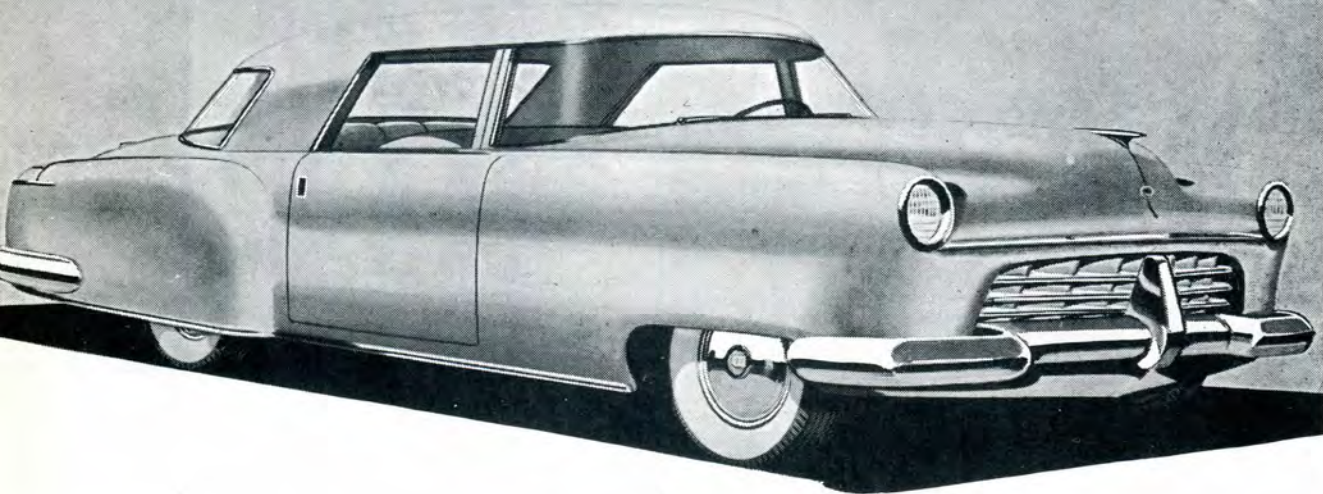
the trend is to

N-A-X

HIGH-TENSILE STEEL

for

BUMPERS GRILLES HOODS
FENDERS BODY PANELS DECK LIDS
FRAMES BRACINGS WHEELS HUB CAPS
AND OTHER AUTOMOTIVE PARTS



for High Strength • Finer Grain Structure • Good Formability • Great Impact-Toughness • Excellent Weldability
High Corrosion-Resistance • High Fatigue-Resistance

N-A-X HIGH-TENSILE MEETS ALL REQUIREMENTS OF S.A.E. 950



GREAT LAKES STEEL CORPORATION • N-A-X ALLOY DIVISION • DETROIT 18, MICHIGAN
Unit of National Steel Corporation

Compliments of

THE **READY-POWER** CO.

Manufacturers of

GAS - ELECTRIC POWER UNITS

For Electric Industrial Truck Operation

READY - POWER ENGINE GENERATORS

Dependable, Independent Electric Power for all Purposes

READY - POWER ENGINED REFRIGERATION

*Gasoline, Natural Gas, Butane or Diesel Powered Air
Conditioning or Refrigeration*

Main Office: 76 West Adams, Detroit 26, Mich.

Plants: 3820 Grand River Avenue and 11231 Freud Avenue, Detroit

Manufacturers National Bank of Detroit

WOODWARD AT MANCHESTER

Highland Park, Michigan

Member Federal Deposit Insurance Corporation

FREUHAUF TRAILERS

*"WORLD'S LARGEST BUILDERS
OF TRUCK TRAILERS"*

General Office and Factory

10940 **HARPER**

WALNUT 1-2410

West Side Factory Branch

4005 **WEST FORT**

TASHMOO 5-7400

Better-Built

FOR THE LONG PULL

Engineered in GMC's modern, new Engineering Laboratories . . . among the finest in the industry . . . and only one example of the complete facilities of this largest exclusive producer of commercial vehicles.

Tested on the famous General Motors Proving Ground . . . where GMCs are subjected to exhaustive engineering tests and operated for thousands of miles under some of the world's roughest, toughest road conditions.

Proved for millions of economical, dependable miles. Endorsed by hundreds of thousands of owners and operators covering every truck transport vocation. Backed by forty years of truck building experience.

**These are some of the reasons
why GMC Trucks are Worth More**



THE KEY  TO GREATER TRUCK VALUE

GMC TRUCK & COACH DIVISION • GENERAL MOTORS CORPORATION

KOESTLIN TOOL & DIE CORP.

STAMPING DIE SPECIALISTS

No Work Too Large

Complete Body Die Facilities

Humboldt and Magnolia Aves.

TA. 5-1490

*Good Luck
to
Lawrence Tech*

CHECKER CAB COMPANY

CERRY 7000

Detroit, Michigan

TOM'S QUALITY MARKET

*The Finest Foods at Michigan's
Finest Market*

12811 Woodward Avenue, Cor. Glendale

Convenient Parking

PLATING • RUSTPROOFING
ANODIZING — HOT CASTINGS
SAND BLASTING — ELECTRO POLISHING

UNITED PLATERS, INC.

982 MADISON AVE.

BILL SAGE

COMMERCIAL BINDERY CO.

854 HOWARD

ALPHA Try Out Press

Tries Dies Under Actual Production Conditions

ALPHA TOOL WORKS

9281 FREELAND AVENUE

"I Want to Be Your Milkman"

H. A. McDONALD CREAMERY CO.

LOCAL — FRIENDLY

MILK - CREAM - ICE CREAM

TOWNSEND 8-5250

9700 OAKLAND AVENUE



Dearborn Dealers Sell and Serve in Michigan!

We are glad that Lawrence Institute of Technology is realizing its dream of expansion.

As farm equipment people, we too have an educational obligation. Our job is to promote faster, easier farming—to make less work for the farmer—to help him earn more income per acre by use of Ford Tractors and Dearborn Farm Equipment.

We have another obligation to the State at large—that of aiding Institutions which promote better farming in Michigan.

We pledge our aid to the New Lawrence Institute of Technology.

***The Ford Tractor and Dearborn Farm Equipment
Dealers of Michigan***

Ford Farming

**MEANS LESS WORK . . .
MORE INCOME PER ACRE**

GRAY MARINE MOTOR CO.

MARINE - DIESEL and GASOLINE ENGINES

25 to 225 HP

710 CANTON AVENUE

DETROIT, MICHIGAN

The Wayne Way
Good Products Plus Good Service

Metal Working Lubricants
Rust Preventives
Paste Solder
Chemical Specialties

Wayne Chemical Products Co.

Division The Wayne Soap Co.

Established 1899

Copeland Street & M. C. R. R.
Detroit 17, Michigan

PARAMOUNT ENGINEERING COMPANY

PRODUCT ENGINEERING

Tool, Die and Special Machine Designers
Wood Patterns and Models

1625 East Grand Boulevard
DETROIT 11, MICHIGAN

BURTON ABSTRACT & TITLE CO.

ABSTRACTS - TITLE INSURANCE - ESCROWS
"Serving Continuously Since 1866"

Main Office, 350 W. Congress

WOODWARD 2-9800

FRAZER PAINT

Buy Quality Paint—Paint Right From the MAKER
BUY FRAZER PAINT

2475 HUBBARD

TAshmo 5-3440

CANTEEN CO.

"At Your Service"

FOR SERVICE CALL

CANTEEN CO. 3939 Bellevue

WAlnut 1-0950

TARNOW ELECTRIC SUPPLY CO.

Wholesale Electrical Supplies

45 E. MILWAUKEE

CONGRATULATIONS LAWRENCE TECH

ON 16 YEARS OF REMARKABLE PROGRESS

May the coming years witness the fulfillment of the fondest hopes of your faculty . . . of a beautiful campus, surrounded by administrative, class room, research and other facilities.

We are confident your graduate engineers will have a good word for the Palmer-Bee equipment they come in contact with when they become established in industry . . . for Palmer-Bee has designed, manufactured and erected many miles of good materials handling systems and thousands of dependable speed reduction drives since it was founded in 1905.

PALMER-BEE CO.

DETROIT 12, MICHIGAN

ENGINEERS AND MANUFACTURERS OF

Conveyor Systems for Every Purpose
Power Transmitting Machinery

Steel Mill Auxiliary Equipment
Speed Reducers and Gearing

Plant No. 1, Westminster & GTRR, Detroit



A COMPLETE MATERIALS
HANDLING SERVICE

**GORDON,
KINNEY &
STANINGER, INC.**

FORD TRUCKS: 1,000 lb. to 60,000 lb. capacity.
DIE HANDLERS: Up to 55 ton capacity.
TRANSPORTERS: Both Platform and Pallet, 4,000 lb. and
6,000 lb. capacities.
TRANSTACKERS: Telescopic and Non-Telescopic.
TRANSTRACTORS: Also Semi-Live Skid Models.
HYDRAULIC LEVELING DOCKS.
PALLET: Expandable, Collapsible, Steel, Wood.

410 STEPHENSON BUILDING
DETROIT 2, MICHIGAN
TRinity 3-8600

CONGRATULATIONS
ON THE GROWTH
OF
LAWRENCE TECH

**DANLY
MACHINE SPECIALTIES, INC.**

1549 TEMPLE AVE., DETROIT, MICH.

DANLY DIE SETS
DIE MAKERS
SUPPLIES

DANLY ADVANCE
DESIGNED
PUNCH PRESSES

Safway Steel Scaffolds Inc.

SCAFFOLDS
OF EVERY DESCRIPTION

Interiors—Exteriors—Rolling Scaffolds—
Suspended Scaffolds—Bleacher Seats

RENTED OR SOLD
By Day, Week, Month or Contract

57 E. Canfield

TEmples 3-0420

Detroit Electric Hoists are built in capacities of $\frac{1}{4}$ to 15 tons. They are made in various designs for practically every kind of material handling problem.

Ask for illustrated Bulletin with interesting information on many types of Detroit Electric Hoists.

Detroit Hoist & Machine Co.

8222 MORROW ST., DETROIT, MICH.

SCHWARZ FOUNDRY CO.

2001 W. FORT STREET
DETROIT, MICHIGAN

MARVEL-SCHEBLER CARBURETORS

Factory Central Distributor

PARTS DEPOT

KNORR-MAYNARD INC.

5743 WOODWARD

DE LUXE DIE WORKS

DIES - JIGS - FIXTURES
KELLER JOBBING

TOOLS - DIES

"Promptly"

20201 HOOVER

2314 S. Santa Fe Ave Long Distance
Los Angeles, Cal. Lucas 7101

TRANSFORMERS and REACTORS

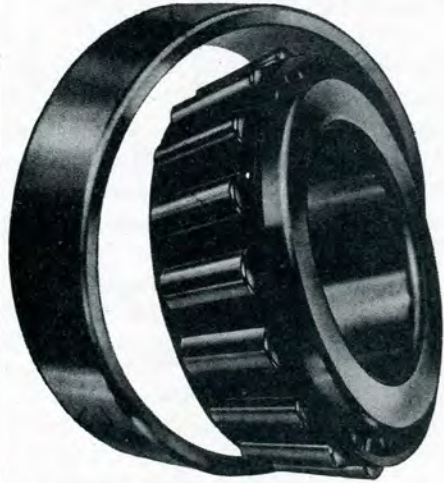
Designed and manufactured to your specifications for experimental or production use in sizes up to 25 KVA

*Prompt Delivery on Small or Large
Quantities*

OSBORNE TRANSFORMER CORP.

948 EAST LAFAYETTE
DETROIT 7, MICHIGAN

SPHER-O-HONED
BOWER BEARINGS ARE



SOMETHING EVERY BEARING USER SHOULD KNOW

The meaning of the word Spher-O-honed is something that every bearing user should know.

It sums up important advantages that make Bower bearings unique . . . truly outstanding in the tapered bearing field. It stands for such different and greatly improved design features as spherical roll-ends and flange surfaces, the large oil groove; plus the most advanced production techniques that make possible the smooth, hard, durable races that you find in Bower bearings.

In short, Spher-O-honed really means smoother performance, greater dependability, and longer bearing life for your product. That's why Bower bearings are your best bearing buy.

For more complete information, write for the new Bower engineering catalog.

BOWER ROLLER BEARING COMPANY
Detroit 14, Michigan



BOWER

ROLLER BEARINGS

STANDARD TUBE CO.

"STANDARD"

WELDED and BUTTED STEEL TUBING
FABRICATED TUBULAR PARTS
UPSET TUBES and FORGINGS

24300 PLYMOUTH ROAD

Kenwood 1-9300

Ecclestone Chemical Co., Inc.

CHEMICALS

Basic and Specialized

For the Manufacturing and Industrial Trade

Large Stocks Carried

Prompt Delivery

The Ecclestone Chemical Co., Inc.

2669-79 Guoin St.

LOrain 7-4650

HETTCHE MOTOR SALES

Ford - Mercury - Lincoln Zephyr

SALES -- SERVICE

2475 West Grand Boulevard

INDUSTRIAL CASTINGS CO.

8955 THADDEUS

EFFICIENT ENGINEERING CO.

Registered Professional Engineers

Designers of Products, Tools, Dies, Jigs, Fixtures
Special Machines, Die Casting and Plastic Equipment

1040 WEST FORT

DETROIT, MICHIGAN

INDUSTRIAL HEATING EQUIPMENT CO.

3570 FREMONT PLACE

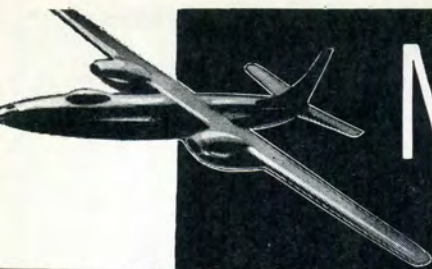
DETROIT, MICH., U. S. A.

GREGORY MAYER & THOM CO.

OFFICE OUTFITTERS

CAdillac 9330

DETROIT

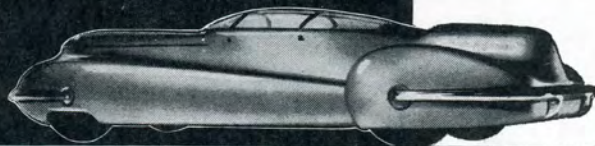


McLOUTH

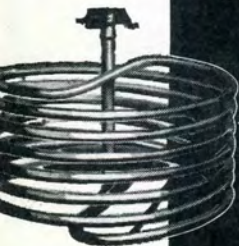
STAINLESS



STEEL



McLOUTH STEEL CORPORATION



DETROIT and TRENTON

IT'S THE FERGUSON SYSTEM
THAT MAKES THE DIFFERENCE!
. . . AND SOUND ENGINEERING
PLAYED ITS PART

HARRY FERGUSON, INC.

3639 E. MILWAUKEE
DETROIT 11, MICHIGAN



*Ferguson Tractors
and Ferguson System Implements*

Metal Working Machinery

RIORDAN MACHINERY COMPANY

213 CURTIS BUILDING
DETROIT 2

PARAMOUNT RUBBER CO.

*Synthetic Rubber and Plastic Engineers
and Manufacturers*

10401 NORTHLAWN AVENUE
Telephone HOgarth 3050
DETROIT 4, MICH.

THE FREDERICK POST CO.

561 East Jefferson, Detroit
Michigan Branch

FEDERAL MOGUL CORP.

BRONZE BEARINGS

11031 SHOEMAKER
PLaza 0750

CAdillac 4806

TECLA CO., INC.

Technical Work

1507 CASS AVE.
DETROIT 26, MICHIGAN

TO THE 250 new Lawrence Tech graduates Colonial Broach Company — leader among Detroit's machine tool and cutting tool producers — extends its congratulations. Colonial has long been an excellent source of employment for technically trained men. Here, under the best of working conditions, the superstructure of "know-how" is laid upon the academic background. It is from such schools as Lawrence Tech that we hope to continue to draw the men we need to keep Colonial at the top.



INDUSTRIAL WIRE CLOTH PRODUCTS CO.

Industrial Wire Cloth Products

29274 Brush

Wayne, Michigan

WALWAY CO.

METAL STAMPINGS

19270 WEST 8 MILE ROAD

DETROIT, MICHIGAN, U. S. A.

S.O.S.

— SIGN OF SUPERIORITY
— SYMBOL FOR SHOWROOM SUCCESS
AND LASTING SATISFACTION!

Leading manufacturers of finished products find that products by L. A. Young, included in them, add greatly to their successful showroom acceptance. Your use of any of the following—research developed and quality fabricated by L. A. Young—will give your products greater Showroom Superiority and lasting satisfaction:

For Automotive:

Spring Units (Including Famous Adjustable "Select-O-Seat" Units) and "Flex-O-Lator" Padding Supports for Seat and Back Cushions . . .
Garnish Mouldings—Decorative Trims . . .
Precision Mechanical Springs—Such As Valve, Clutch and Brake Springs . . .
Instrument Dash Panel Stampings . . .

For Home Furnishings:

Inner-Spring Units for Mattresses . . .
Bed Springs of Various Designs . . .
Flex-O-Lator Padding Supports for Bedding and Furniture Industries . . .

For Appliances:

Refrigerator Shelves and Baskets . . . Oven Racks

For Apparel:

Star Service All-Wire & Paper-Strut Hangers

L. A. Young Specialists in Design and Fabrication of Superior Springs and Metal Products Will Be Glad to Consult With You On Better Product Applications.



L. A. YOUNG SPRING & WIRE CORPORATION MAIN OFFICES: 9200 RUSSELL STREET, DETROIT 11, MICH.
SERVING THE NATION THROUGH 13 STRATEGICALLY LOCATED PLANTS

**DETROIT
HARVESTER CO.**

DETROIT, MICHIGAN

DURA CO., Division

TOLEDO, OHIO

"You Will Find It At"

FROMM'S

SPORTING GOODS

Hunting and Fishing Supplies
Photography, Drafting Supplies, Tools

You Will Enjoy Shopping at

FROMM'S

13975 WOODWARD

*Open Friday and Saturday Evenings
for Your Convenience*

**ALLIED PRODUCTS CORP.
RICHARD BROTHERS DIVISION**

Designers and Builders of Sheet Metal Dies
None Too Large—None Too Small

1560 EAST MILWAUKEE
DETROIT, MICHIGAN

WAYNE OAKLAND BANK

ROYAL OAK
BERKLEY

HIGHLAND PARK
CLAWSON

Resources Over \$35,000,000.00

Member Federal Deposit Insurance Corporation

HIGHLAND PARK LUMBER CO.

15853 HAMILTON
HIGHLAND PARK 3, MICHIGAN

STEEL TERMINAL CO.

1122 BOOK BUILDING
J. P. JUDD
WOODWARD 1-7867

THE CHAS. A. STRELINGER CO.

149 EAST LARNED ST., DETROIT 26

TEL. WO. 2-7474

Machine Tools

Gears

Industrial Brushes

Safety Equipment

Cutting Tools

Speed Reducers

Abrasives

Air Control Equipment

Welding Electrodes and Gas Welding Rod

Power Transmission Equipment

Material Handling Equipment

Aluminum, Brass, Copper, Bronze

Wire Rope and Wire Rope Fittings

Electric Tools and Motors

Home Workshop Equipment

Industrial Supplies

CHAS. T. BUSH
President

CHARLES E. ALLINGER
Secy-Treas.

Walnut 1-0280

QUALITY DIE & MOLD CO.

DIE CASTING DIES

Plastic Molds (injection and compression)

8726 E. WARREN AVENUE
DETROIT 13, MICH.

BROWN HUTCHINSON IRON WORKS

STRUCTURAL IRON WORK

1831 CLAY

MADISON 3092

Resistance Welder Controls
Electronic Rectifiers
Electronic Motor Controls
Induction and Dielectric Heaters
Special Electronic Controls

WELTRONIC CO.

19500 W. 8 Mile Rd., Detroit 19, Mich.
KENwood 2-2800

GLIDDEN

TIME TESTED PAINTS RIPOLIN ENAMEL
and JAPALAC

Complete, Reliable and Authentic information or Color
Treatments for Home Painting

A Glidden Agent in Your Neighborhood

See Telephone Book Classified Section Page 688

PAINTS-VARNISHES-LACQUERS-ENAMELS

THE GLIDDEN COMPANY

Distributors

7502 WOODWARD, DETROIT, MICHIGAN

Best Wishes for the Success of All Graduates

**COMMERCIAL
STEEL TREATING CORPORATION**

Metal Treating Specialists

6100 TIREMAN

DETROIT, MICHIGAN