



LIT 1968

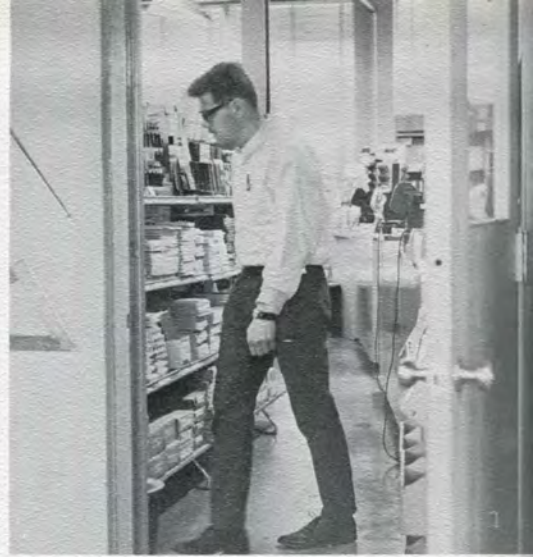
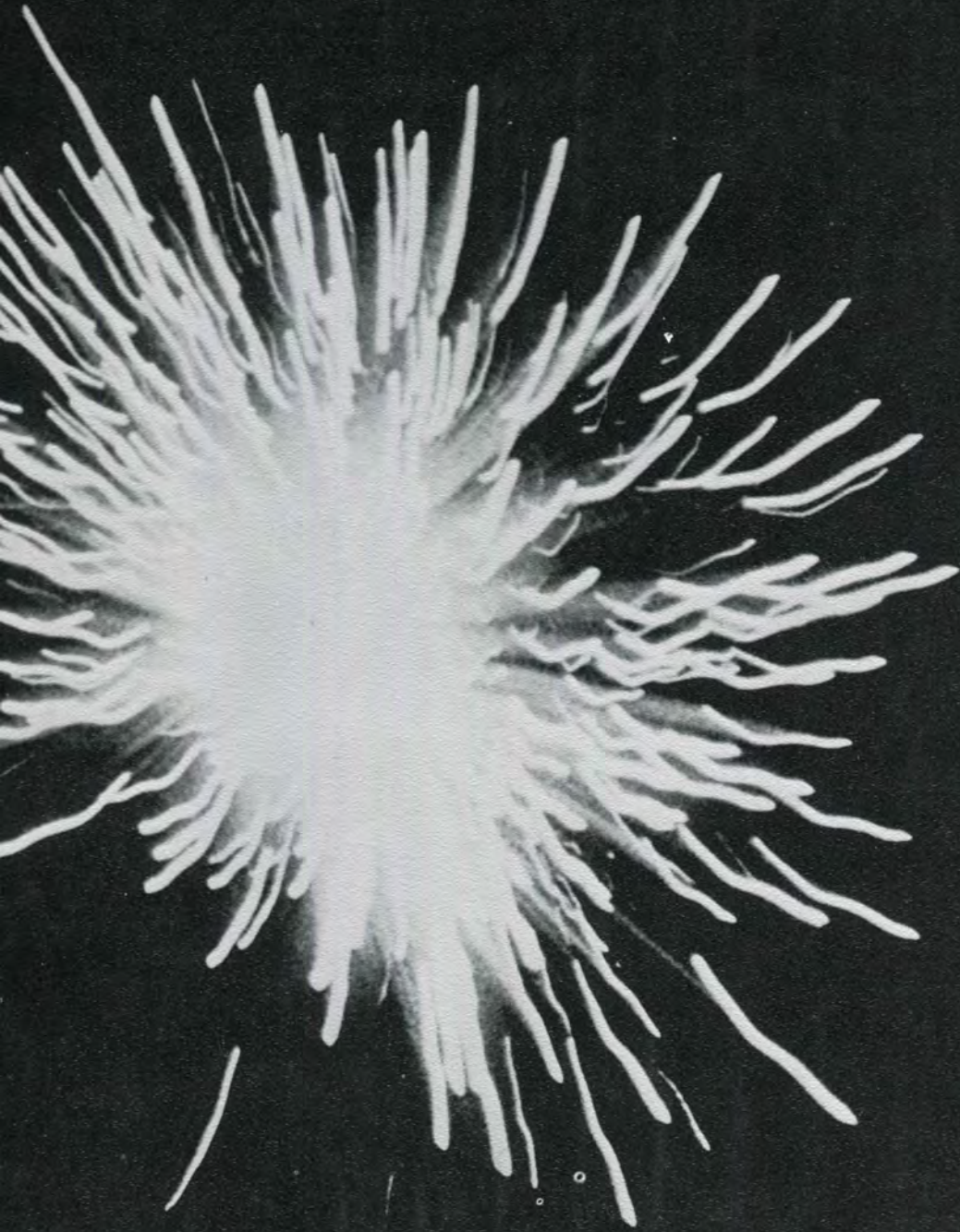




LAWRENCE INSTITUTE of TECHNOLOGY

S O U T H F I E L D

M I C H I G A N





CONTENTS

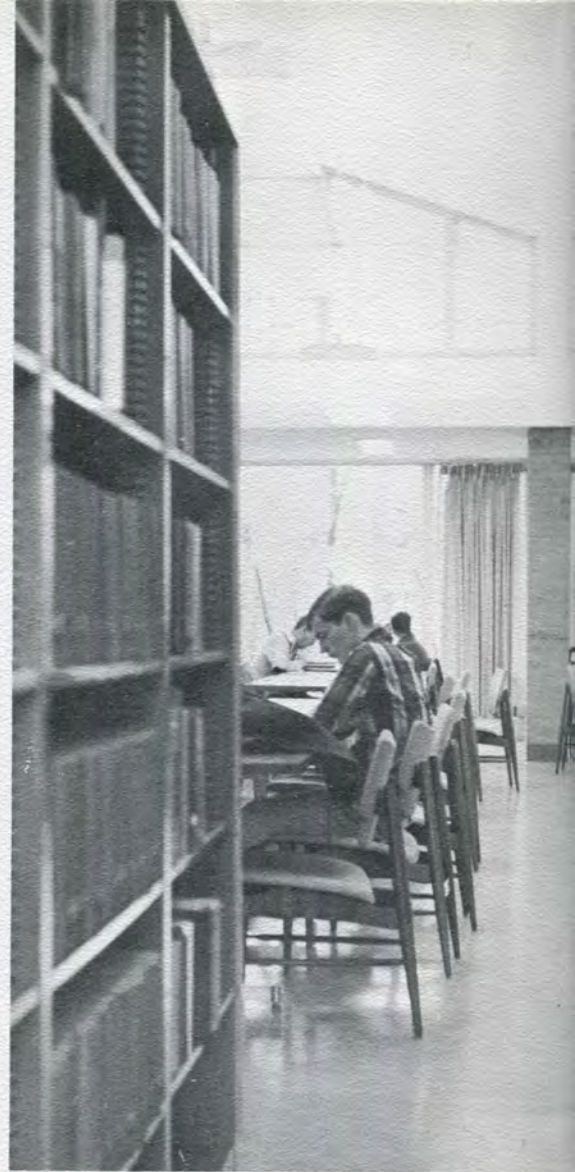
EDITORIAL.....	6
ADMINISTRATION.....	21
FACULTY:	31
ARCHITECTURE	32
ARTS and SCIENCE	36
ENGINEERING	42
INDUSTRIAL MANAGEMENT ...	44
SENIORS:	46
ARCHITECTURE	48
CIVIL ENGINEERING.....	54
INDUSTRIAL MANAGEMENT ...	56
ELECTRICAL ENGINEERING ...	82
MECHANICAL ENGINEERING... ..	92
TECHNICAL INSTITUTE.....	104
ACTIVITIES	110
ORGANIZATION	118
ADVERTISING.....	172

C. Ron Johnston — Editor
 Lester L. Jones — Asst. Editor
 Jim Barrett — Photographer
 Jacquie Arredondo — Special Asst.
 Don Cerget — Business Manager

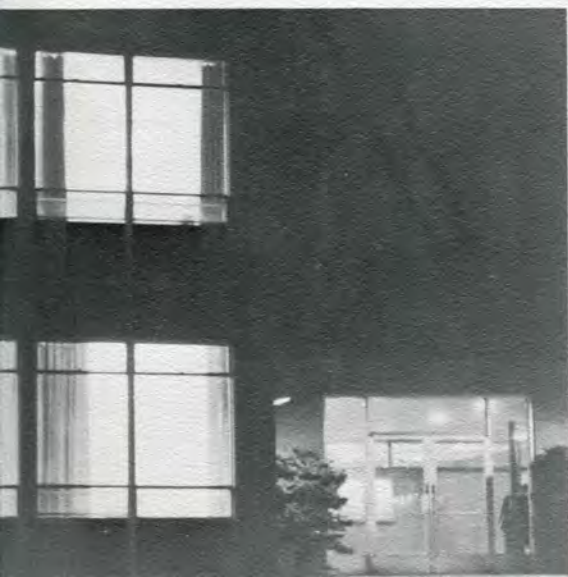
Senior and Club Photography:
 John Huff
 Kahler Studio

Publisher:
 Midwest Yearbook Company

Cover Design and Photography:
 Ron Johnston
 Cover Model:
 Sharon Obeler



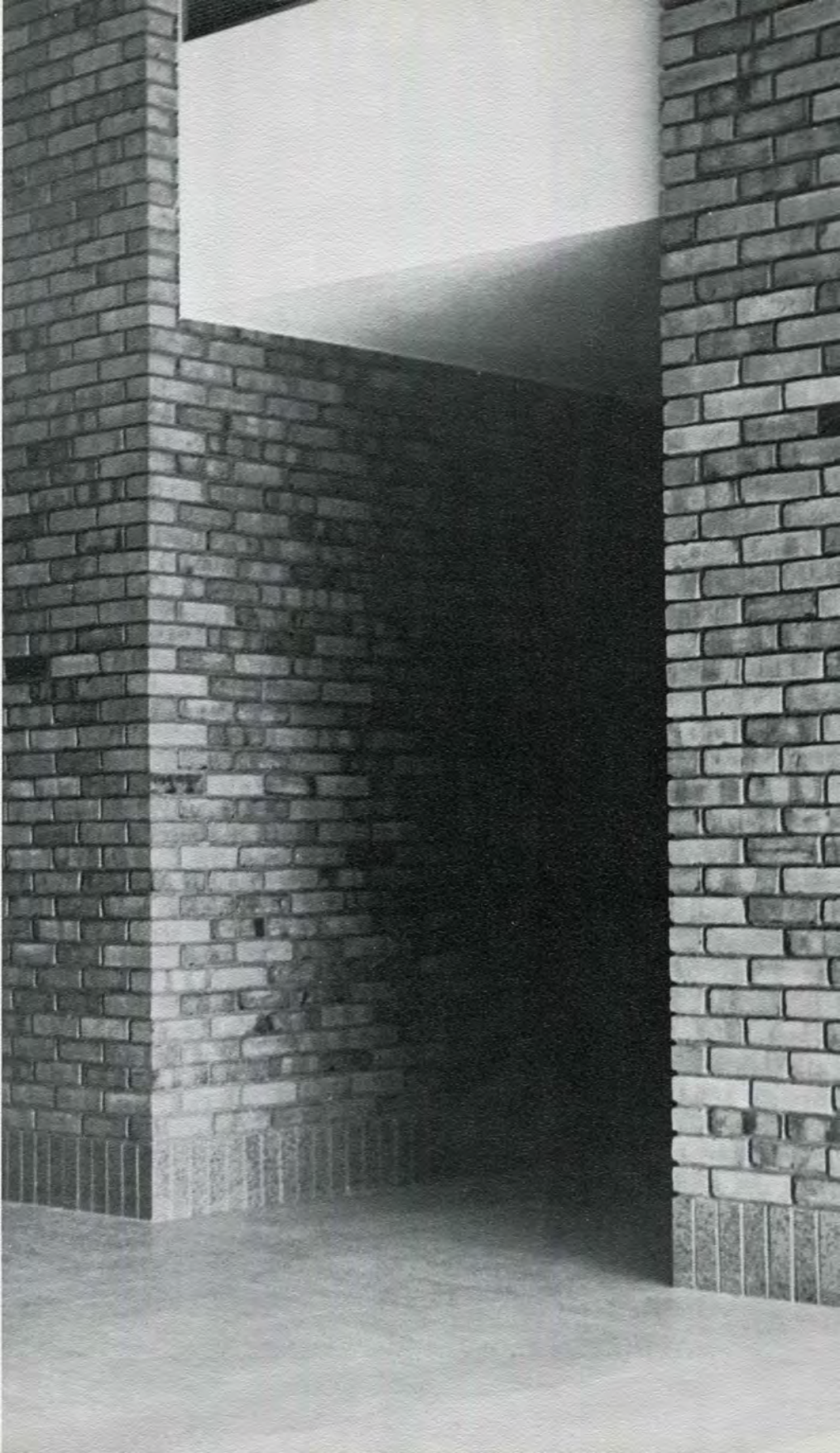
Memories and friends
are all that are left
of the hardwork,
dedication and time
which make up college life.
This brief interlude
is filled with fun and rewards,
but also disappointments.







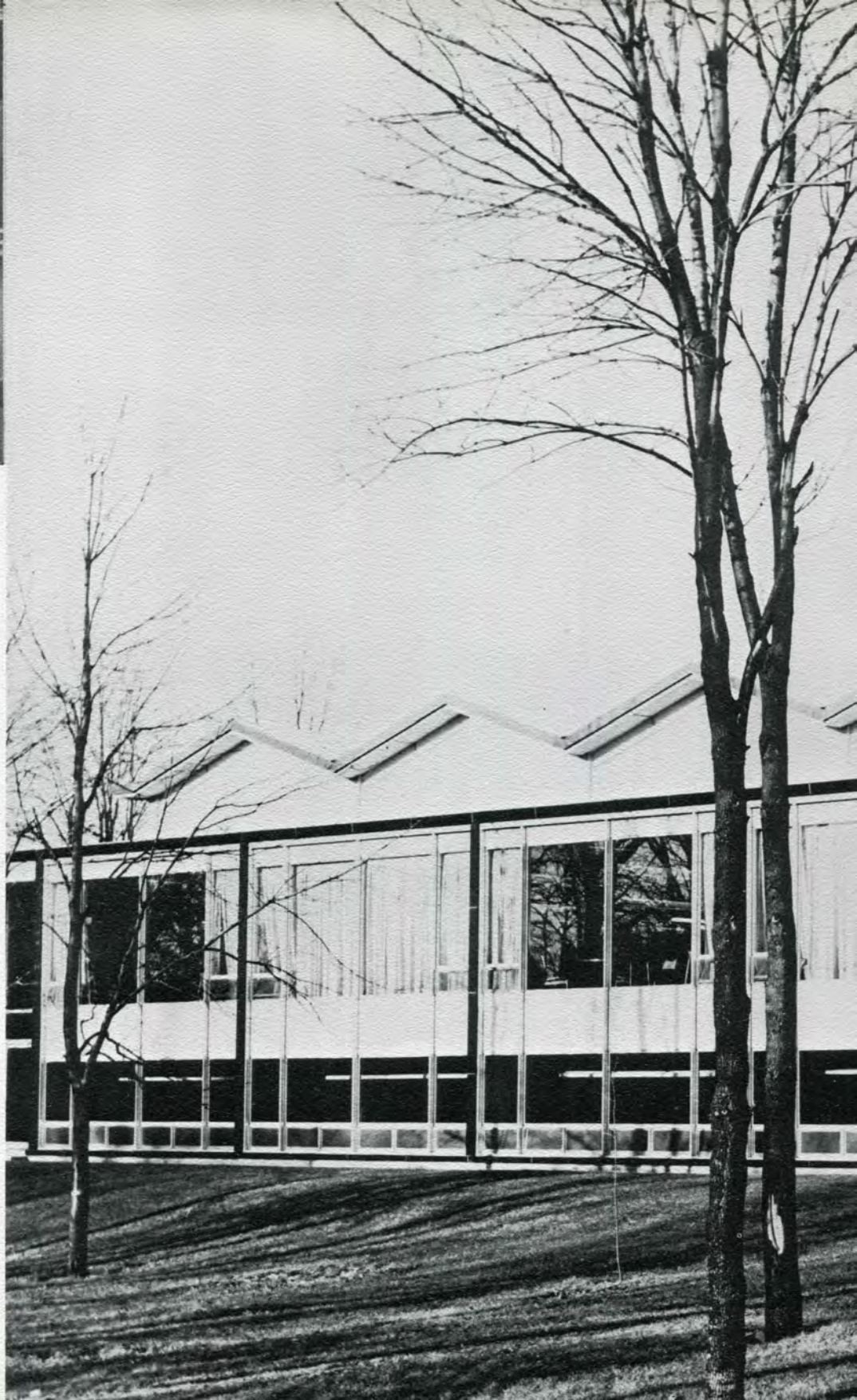
The student now must leave
the shelter of the academic
environment and fare for
himself in the world beyond.







Just as new trees grow,
schools and curriculum evolve.
Faces change and
the school is no longer as it was
the day first entered.
Not only is the change physical
but the school now is viewed
through more mature and
understanding eyes.





CLASSIFIED
UNCLASSIFIED
CONFIDENTIAL
SECRET

1950	1951	1952	1953	1954	1955	1956	1957	1958	1959	1960
1	2	3	4	5	6	7	8	9	10	11
12	13	14	15	16	17	18	19	20	21	22
23	24	25	26	27	28	29	30	31	32	33
34	35	36	37	38	39	40	41	42	43	44
45	46	47	48	49	50	51	52	53	54	55
56	57	58	59	60	61	62	63	64	65	66
67	68	69	70	71	72	73	74	75	76	77
78	79	80	81	82	83	84	85	86	87	88
89	90	91	92	93	94	95	96	97	98	99
100	101	102	103	104	105	106	107	108	109	110



The task of preparing the student
is complete for another year,
but preparations for the new
students are just beginning.
The experiences of the past
make the future brighter
and more enlightened.
The cycle of education continues
as does life.





REPORT BY JOURNALISM & COMMUNICATIONS CLASS

School District Fights for Life

BY WILLIAM FAYRELL
 The school district of North Carolina, which has the longest record of being a "closed shop" in the state, is fighting for its right to maintain the status quo. The school board, which has been in existence since 1912, is now being challenged by a group of teachers who want to unionize. The school board has a long history of being a "closed shop" and has been successful in maintaining its status quo for many years. The school board has a long history of being a "closed shop" and has been successful in maintaining its status quo for many years.

The school board has a long history of being a "closed shop" and has been successful in maintaining its status quo for many years. The school board has a long history of being a "closed shop" and has been successful in maintaining its status quo for many years. The school board has a long history of being a "closed shop" and has been successful in maintaining its status quo for many years.

The school board has a long history of being a "closed shop" and has been successful in maintaining its status quo for many years. The school board has a long history of being a "closed shop" and has been successful in maintaining its status quo for many years. The school board has a long history of being a "closed shop" and has been successful in maintaining its status quo for many years.



Gov. Oregon (left) and Senator Rogers enjoy a moment of conversation during the signing of the Vietnam War.

War Protesters Split Sharply

On Backing Vietnam War

War Protesters Are Staged Across U.S.

The anti-war movement has been a major force in the United States since the beginning of the Vietnam War. Protesters have staged demonstrations across the country, demanding an end to the war. The anti-war movement has been a major force in the United States since the beginning of the Vietnam War. Protesters have staged demonstrations across the country, demanding an end to the war.

The anti-war movement has been a major force in the United States since the beginning of the Vietnam War. Protesters have staged demonstrations across the country, demanding an end to the war. The anti-war movement has been a major force in the United States since the beginning of the Vietnam War.



The turbulence of the world around
and the tensions of an educational system,
often lead the student to question
his position in the total picture.
These pressures direct the course
of human development.
The answers are demanded
with the impatience and idealism of youth.





The views of the students

differ from extreme to extreme.

This age,

this school year,

1967 - 1968,

has proved to be one of unrest

and driving enthusiasm

to bring about social change

both home and abroad.

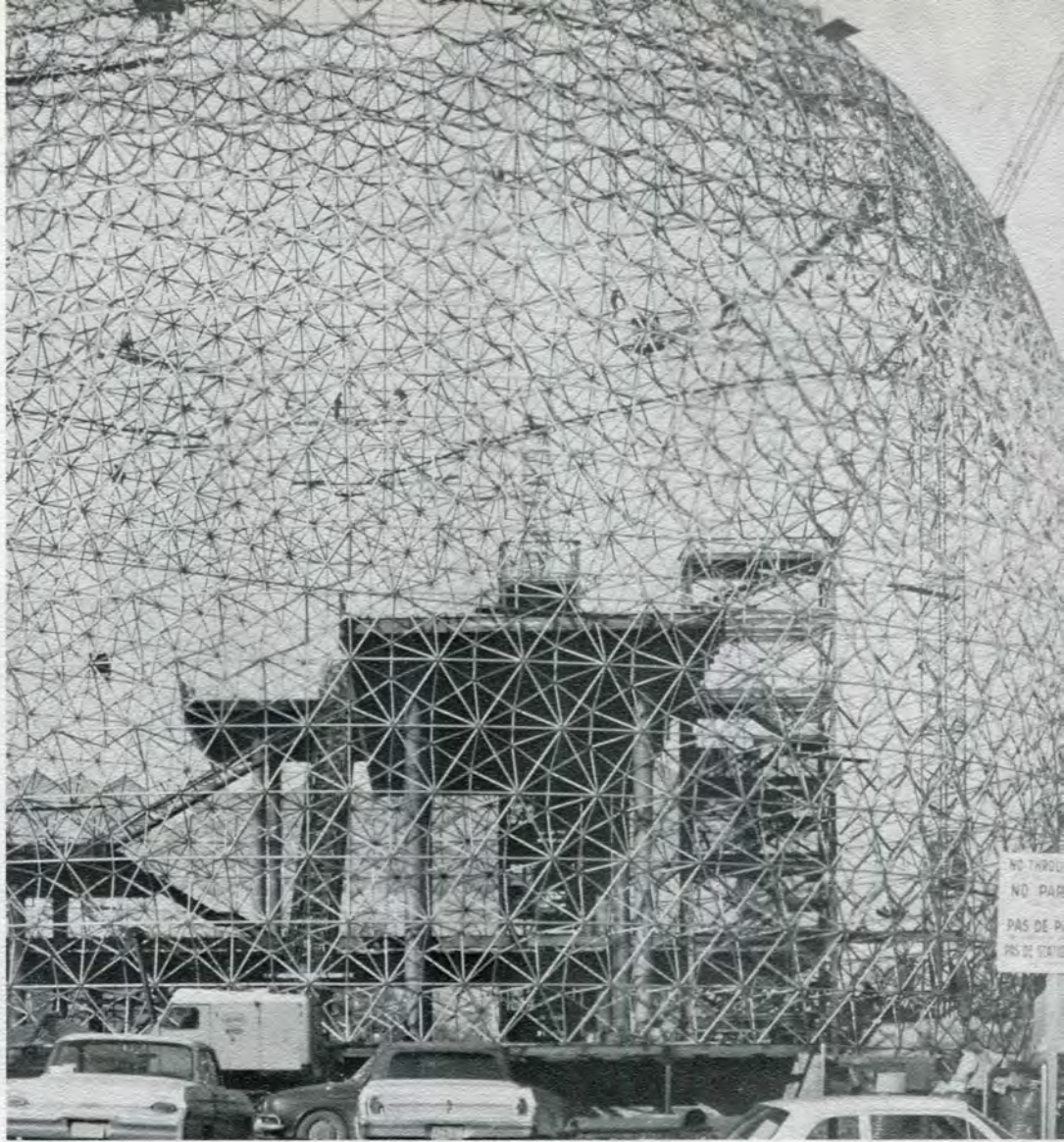
The fulfilled goals of education

raise the standards of

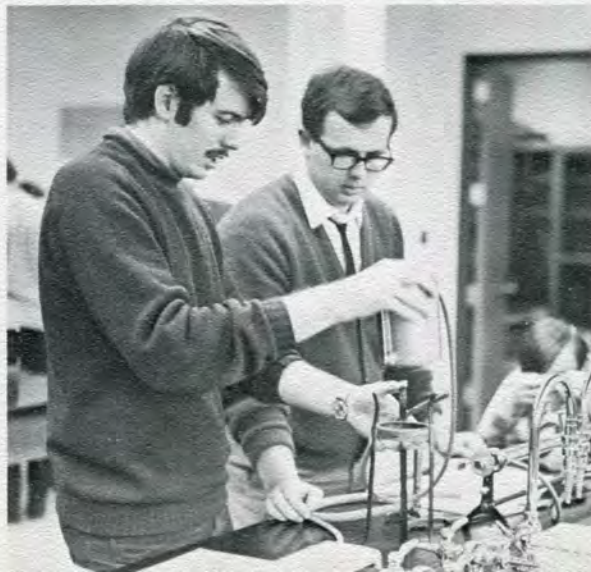
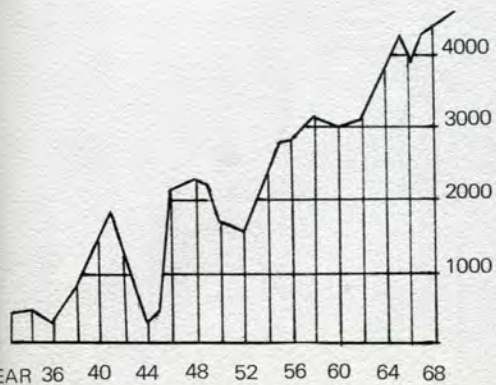
human value and direction.

Hopefully the education of today

will solve the problems of tomorrow.



ENROLLMENT L.I.T. STUDENTS







The increase in both
population and technology
makes it imperative that
the ground work be laid
to seek solutions.

The school function of creating
a total awareness
is a valuable resource for
the future.

If you leave with no answers,
but yet consider this:
a system which has all the answers
cannot progress.
Then you have a starting place.





ADMINISTRATION



Wayne H. Buell
President

Robert L. Hart
Director of Student Services





Mordica M. Ryan
Dean of Academic Affairs



Charles Jankowske
Director of Admissions and Registrar



Gilder D. Jackson
Assistant to the Dean



William C. Burke
Director of Placement



Edward T. Darling
Director of Industry Relations





Michael L. Mitchell
Director of Business Affairs



J. William Hoban
Director of High School Relations



Harold B. Van Bussum
Manager of Campus Store



Herbert G. Williams
Director of Library

Lewis Moon
Director of Counseling and Student Activities



Modele Lee



Jay H. Montgomery
Superintendent of Campus Facilities



Marge Dale



Mrs. B. Buck



Deloros Larkins





Margaret De Marios



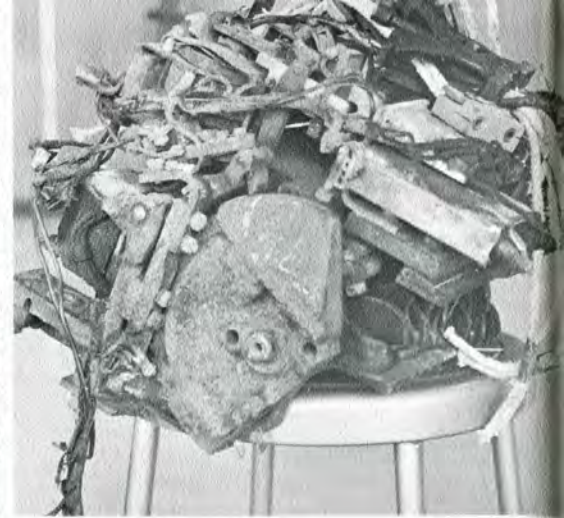
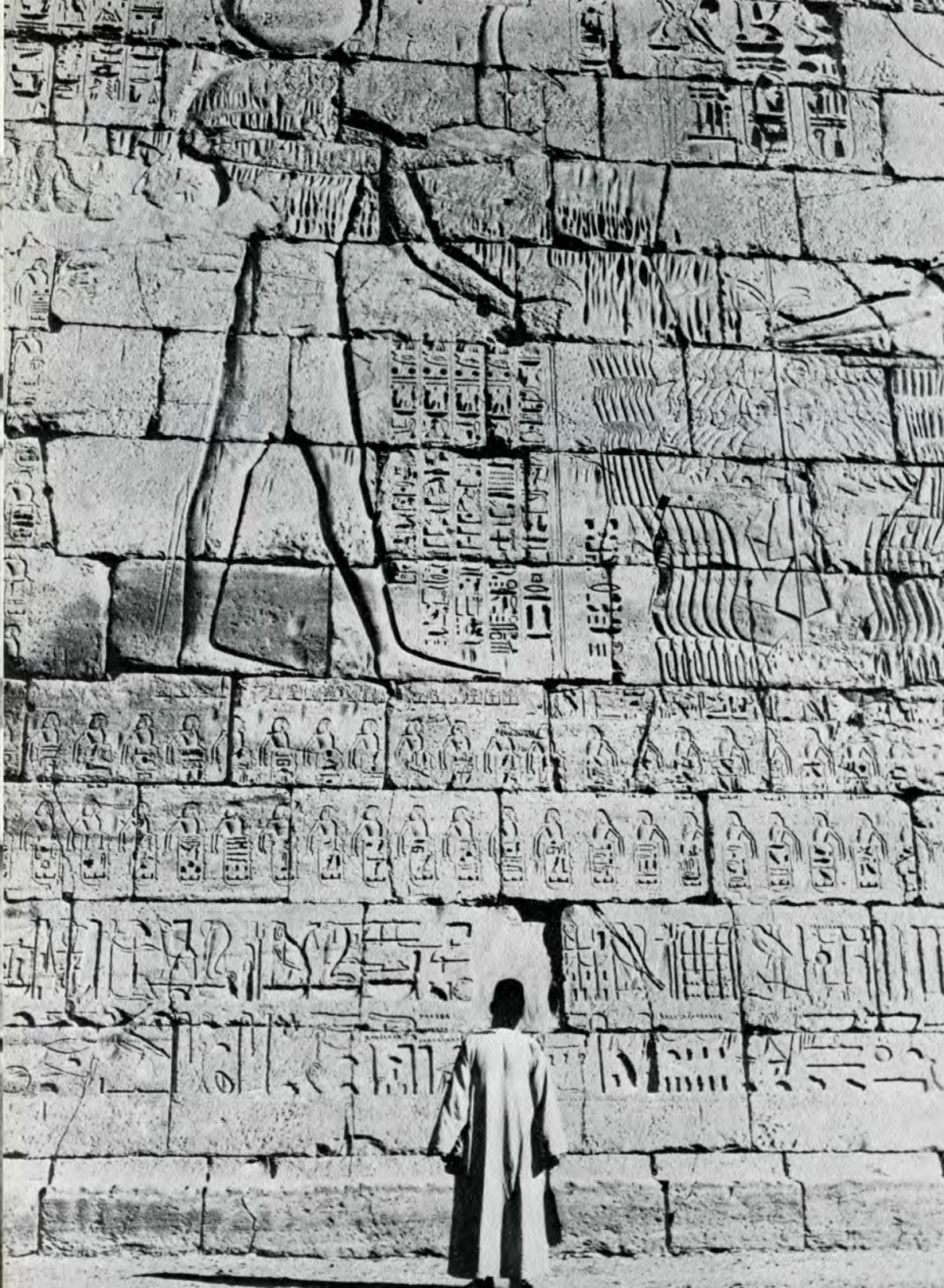
Phyllis Matheson



Catherine L. Graeffe

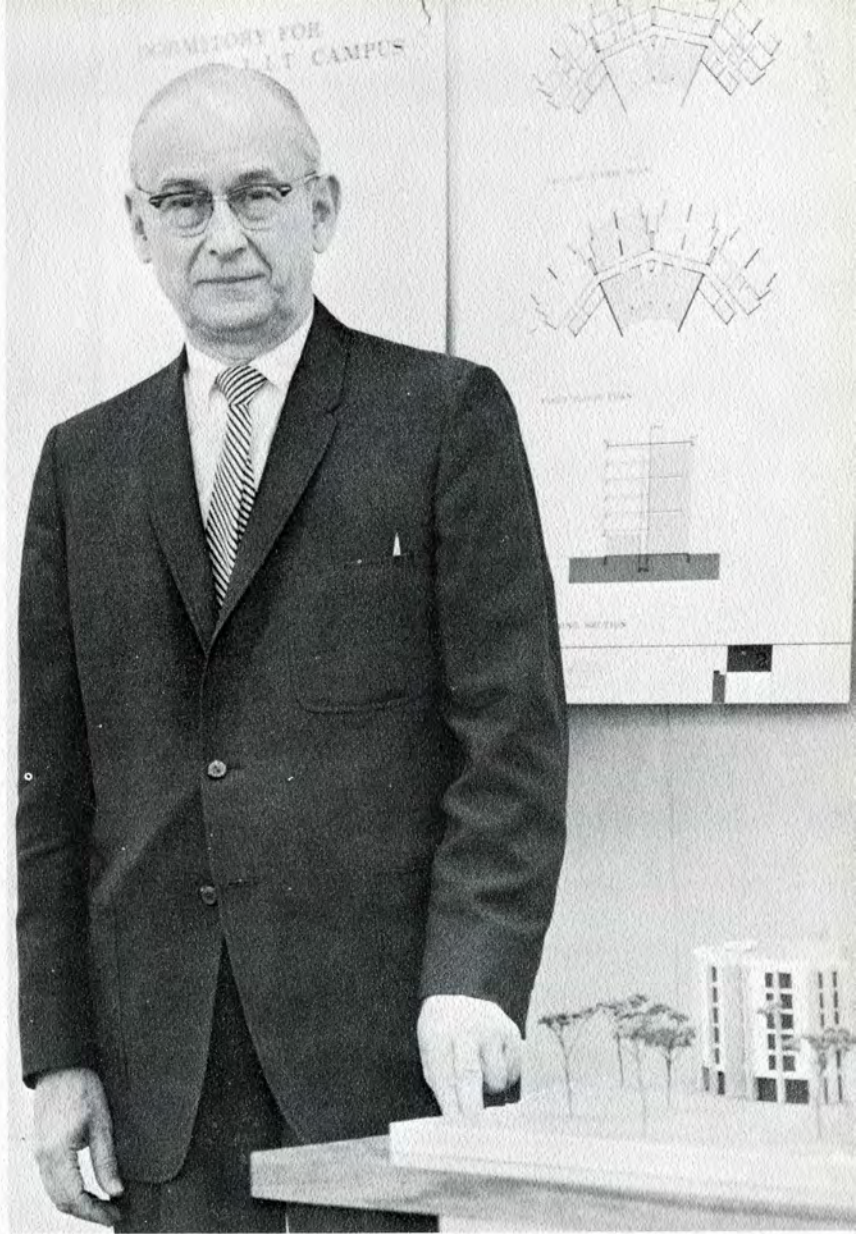


FACULTY

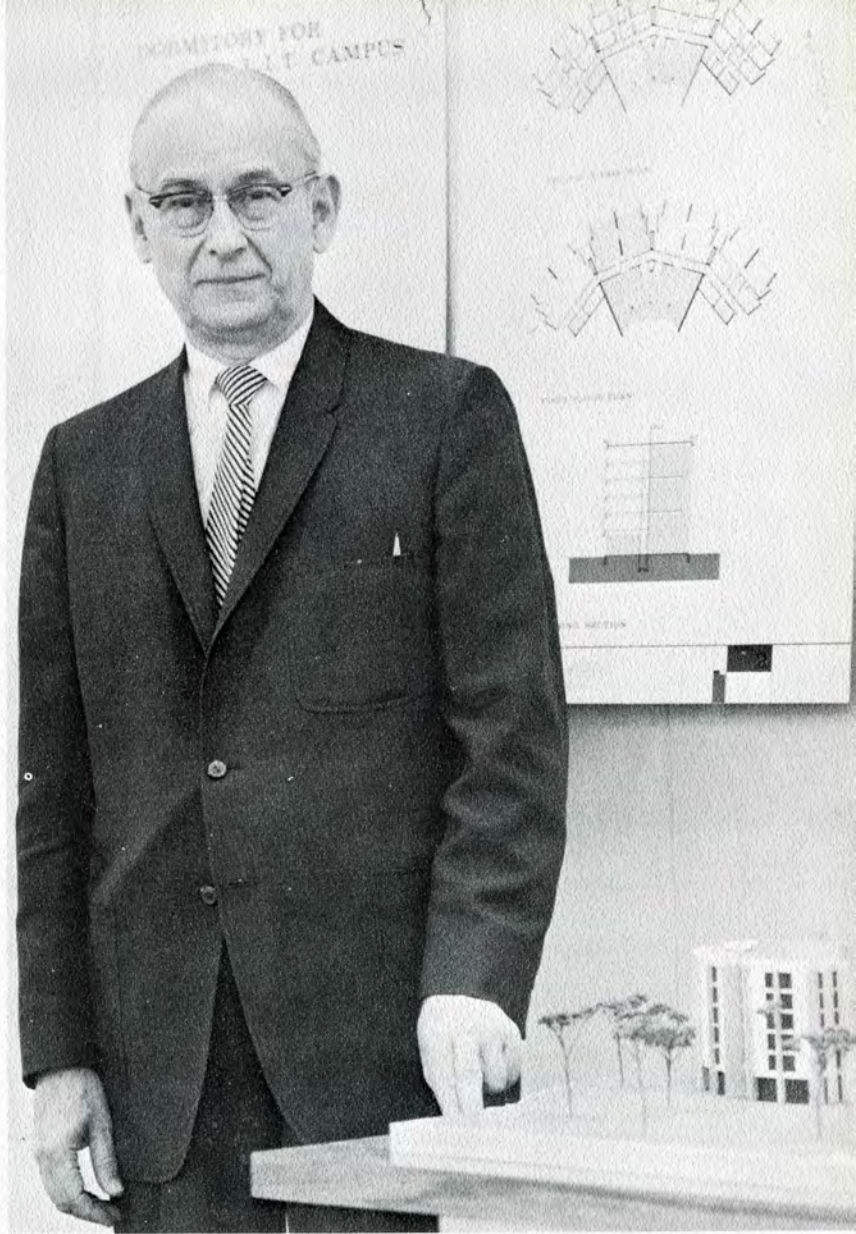


ARCHITECTURE

Earl W. Pellerin
Director of School of Architecture



Earl W. Pellerin
Director of School of Architecture





Glenn H. Small

William Wernet



Mr. Rochon



Harold F. VanDine



George B. Zonars



R. Darrow Chaplin



James Weeks

Ada L. Steinberg





ARTS and SCIENCE

Robert L. Luttermoser
Director of School of Arts and Science





Mildred B. Linn

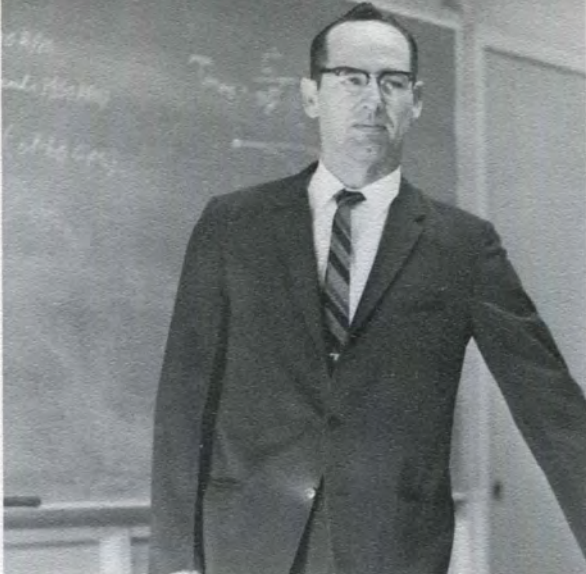


Nandor J. Zimmersmann
Head of Physics Department



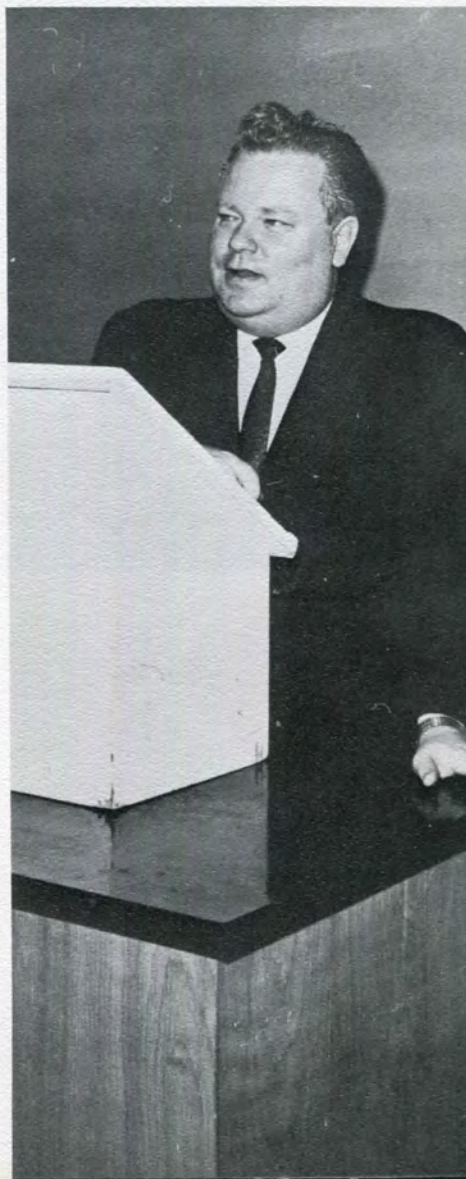
Frederick Thompson

Thomas D. Odle
Head of Social Sciences Department



Henry W. Nace
Head of Mathematics Department

Frazier Wattenbarger



Charles Jankowske
Head of Psychology Department



Joseph L. Byers



Bernard Lis

George W. Mach
Head of Chemistry Department

Edmund Jositas



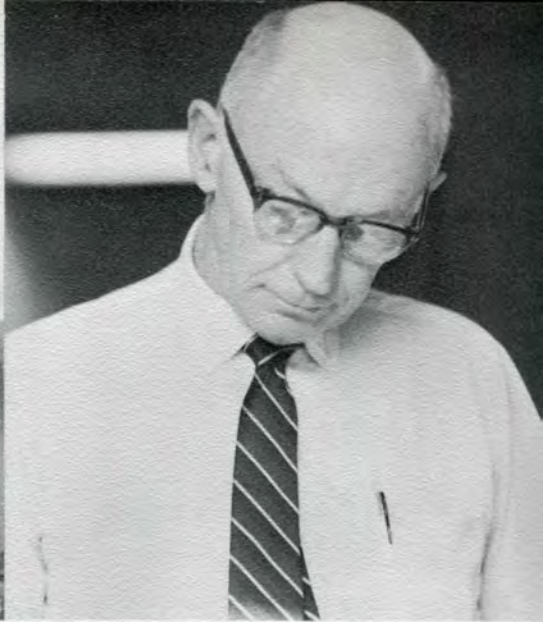
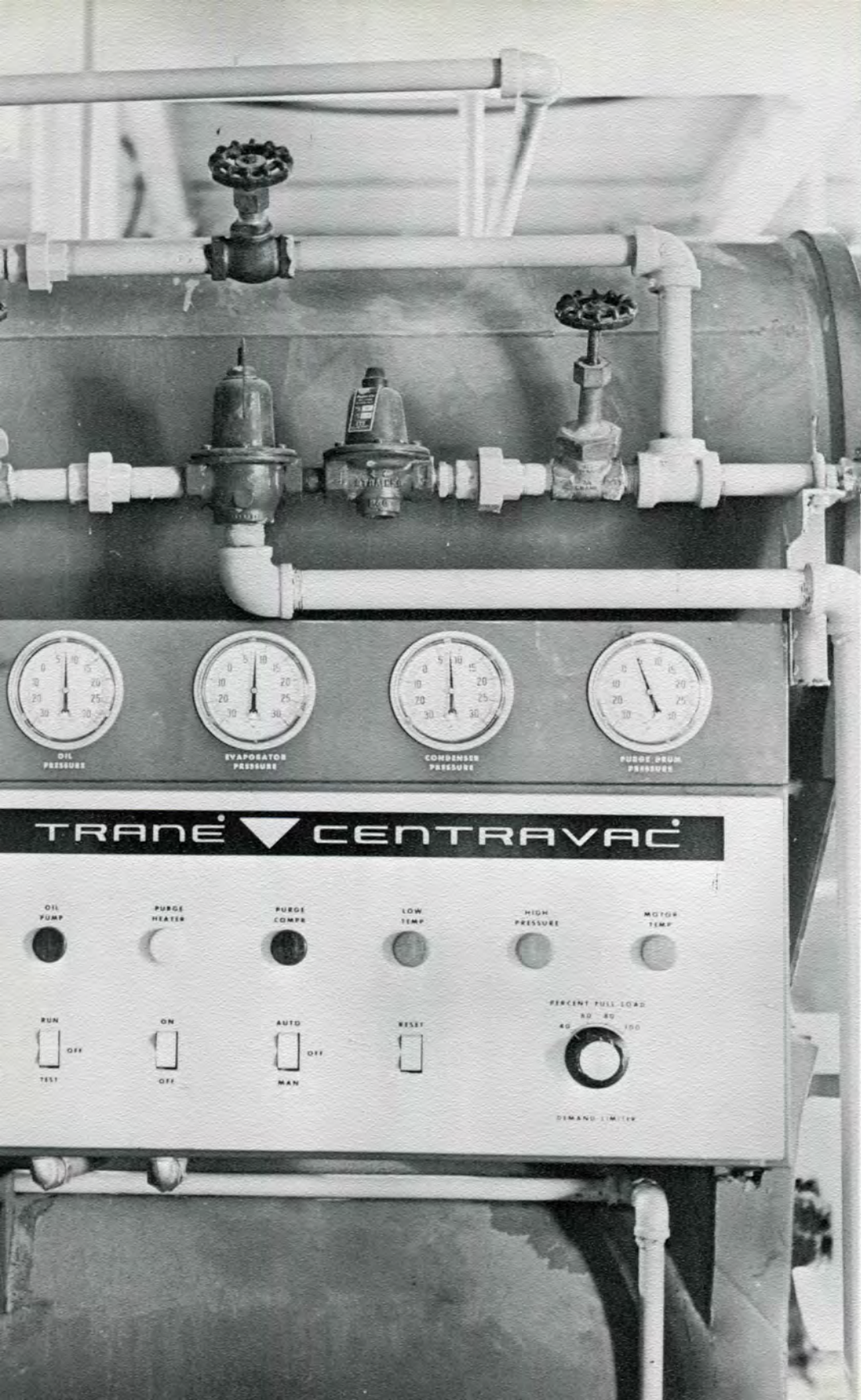
Roy W. Schenkel



John D. Petersen
Head of English Department

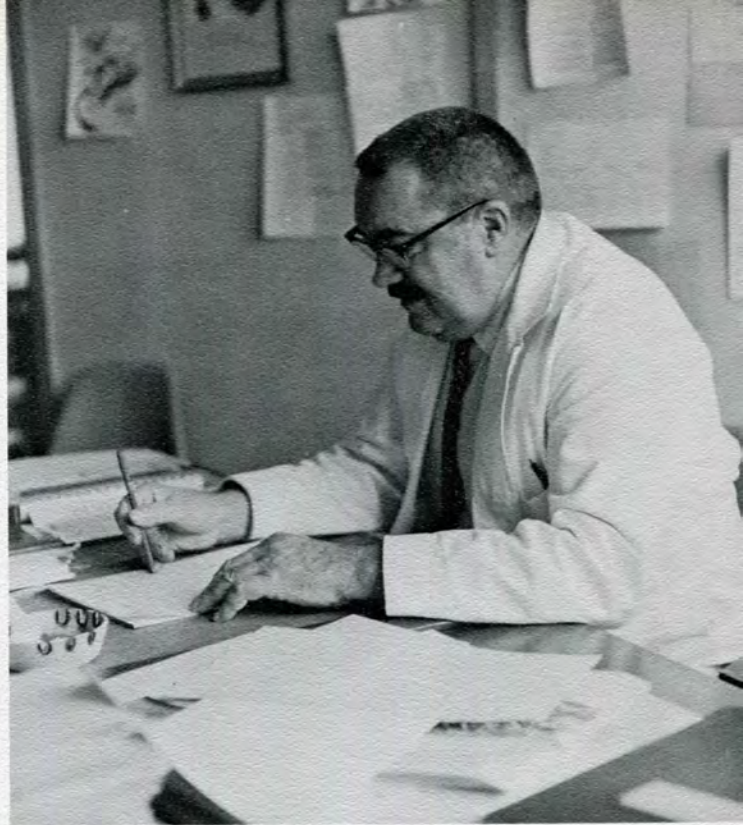


Leland A. Lahr



ENGINEERING

Donald C. Beard



Hans G. Erneman
Director of School of Engineering



Clarence G. Chambers



INDUSTRIAL MANAGEMENT

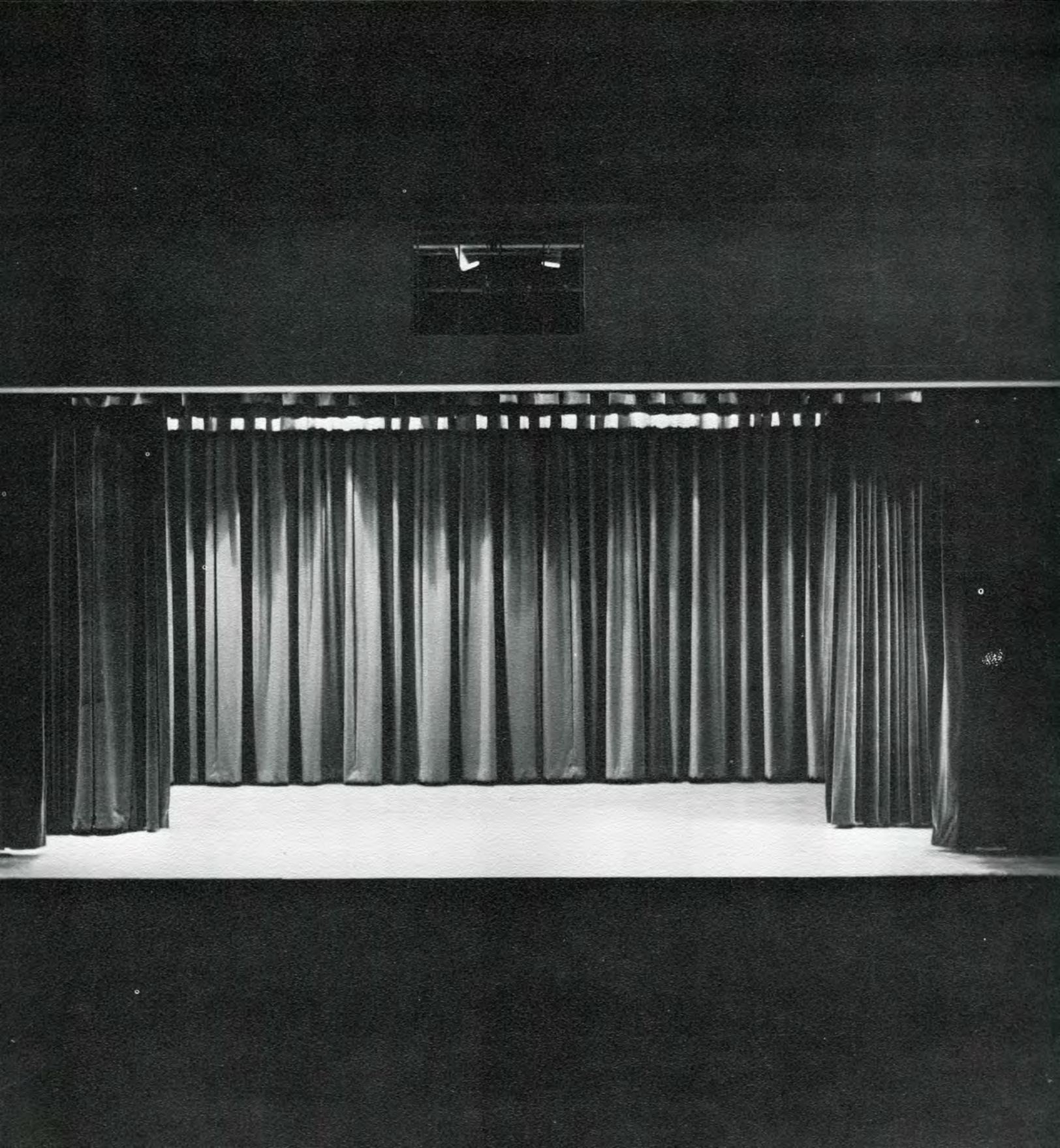
Richard W. Rosenbaum



Edwin O. Graeffe
Director of School of Industrial Management



Cleophas M. Buck



SENIORS



ARCHITECTURE



Claude Allen Cady

A. I. A.



Chester Frank Bartosik

A. I. A.



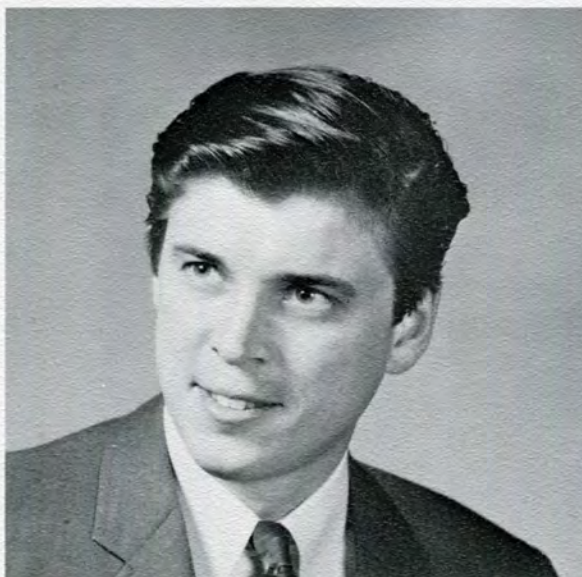
Louis N. Des Rosiers





Dennis B. Doebler

A. I. A.

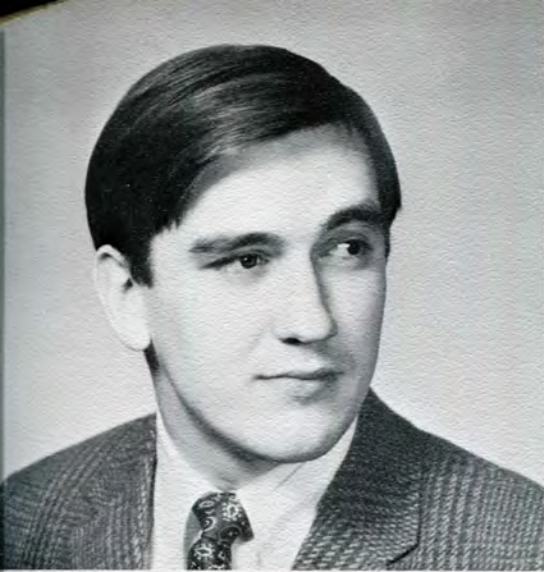


Arthur C. Eckner

A. I. A.



Julio Grabiell



Thomas E. Hansz

Student Council - President 1966-67
Alpha Sigma Phi
A. I. A.



C. Ronald Johnston

Yearbook Editor
Student Government
A. S. T. D.
Social Committee - Chairman
I. M. Club
Ski Club
A. I. A.



Lester L. Jones

A. I. A.
Yearbook - Assistant Editor
Tech News Staff Writer
Student Government
Forum '66 - Chairman
Omega Psi Phi



Michael Kosnic

James P. Sieradzinski
A. I. A.



Badie J. Murr
A. I. A.



Charles Thomas Skinner

Alpha Gamma Upsilon
A. I. A.
Ski Club



Frank Weber, Jr.

A. I. A.



William Whitaker





**CIVIL
ENGINEERING**



Lloyd Ramseyer
Civil Club



James D. Schick



INDUSTRIAL MANAGEMENT

Clifton Frank Ashley II

A. S. T. D.
I. M. Club
Intramural sports



Donald R. Ashton

Dean's Honor Roll
Marketing Team Captain
A. M. A.
A. S. T. D.
S. A. E.
I. M. Club



Keith F. Baker

Student Government - Vice-President
A. S. T. D.
I. M. Club
Alpha Sigma Phi



Robert Bartnicki

I. M. Club - Secretary-Treasurer
A. M. A. - President
A. S. T. D.
S. A. M.



Harold B. Brown

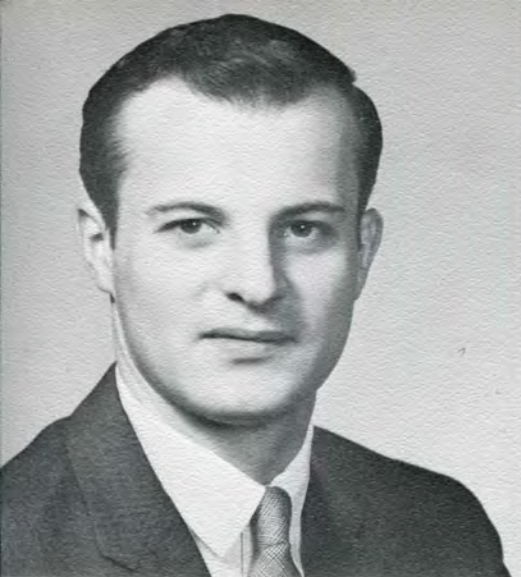
A. M. A.



John Arthur Brown

I. M. Club
A. S. T. D.
Ski Club
Senior Class Secretary-Treasurer
A. M. A.





David J. Carruthers

I. M. Club
A. A. A.



Hugh M. Diamond

A. S. T. D.
I. M. Club

James R. Collins





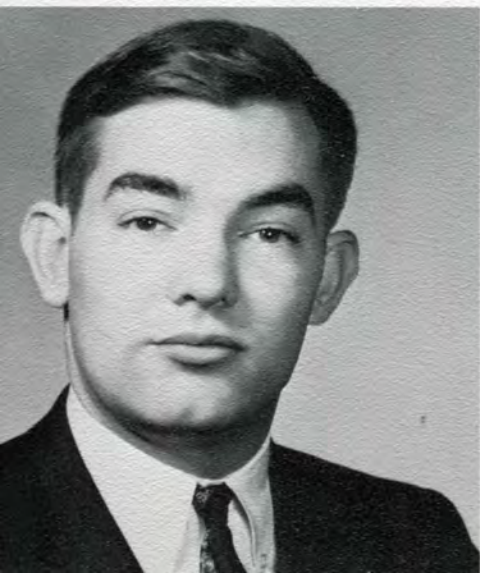
Gary L. Dikin

Marketing Team
A. S. T. D.
I. M. Club
Dean's Honor Roll



Louie Dorka

Kappa Sigma Kappa
A. S. T. D.



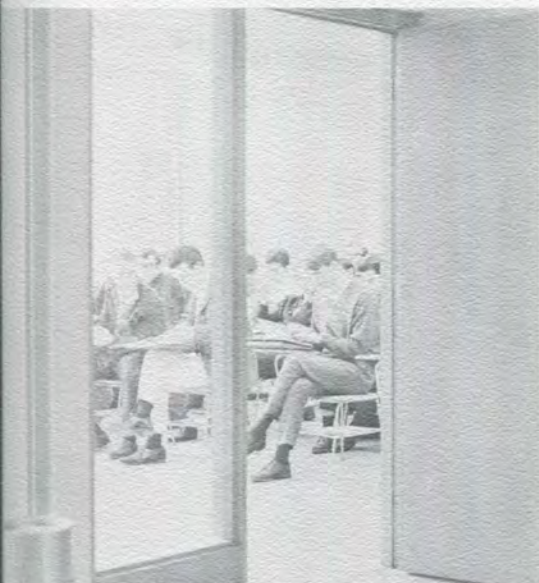
E. Michael Feeney





Daniel Fifer

Kappa Sigma Kappa - Treasurer



Alan L. Fitzpatrick

Kappa Sigma Kappa - Treasurer



Kenneth P. Ford





David M. Fulton

A.S.T.D.
I.M. Club



Lawrence Hugh Goldsmith

A. S. T. D.
Intramural Sports - Student Director
Basketball Team - Captain
Student Government
Glee Club
I. M. Club

John Dennis Gondol

S. A. E.
A. S. T. D. - Treasurer
I. M. Club
1967 Homecoming Committee
Spring Fair
Tech News writer



Thomas Stephen Gray

A.S.T.D.
Psychology Club



Max E. Harris

A. S. T. D.
I. M. Club



Irwin Harrison

Harrison
I. M. Club - President
Marketing Team
A. S. T. D.
A. A. A.
Student Government
Intramural Sports





Mark F. Haskamp



Lane A. Hautau

Student Government
M. S. P. E.
S. A. E.
A. S. T. M. E.
A. M. A.



Kent B. Henze

Kappa Phi Sigma

Richard G. Hickson
I. M. Club



Bruce Hobaugh
A. S. T. D.



Steve Hudak
I. M. Club
Intramural Sports
Political Action Group



Richard E. Huntley



Gary Jensen

Circle K
Intramural bowling
Intramural baseball
A.A.A.
I.M. Club



Robert Douglas Jupp

Bachelor of Science Industrial Engineering 1958
A. S. T. M. E.

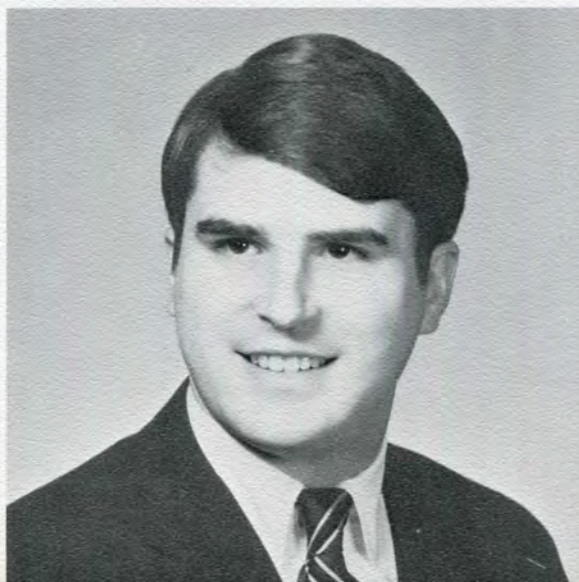


Lyle L. Kaarle

A. S. T. D.
I. M. Club



Fred Kluska



Kenneth J. Knott

I. M. Club
A. A. A.
Intramural Sports
1968 Homecoming Committee



Dennis C. Kristoff

Kappa Sigma Kappa

Daniel Laird

A.S.T.D.
Newman Association



Melvin L. Lang





Lawrence Richard Langbeen



William R. Latham



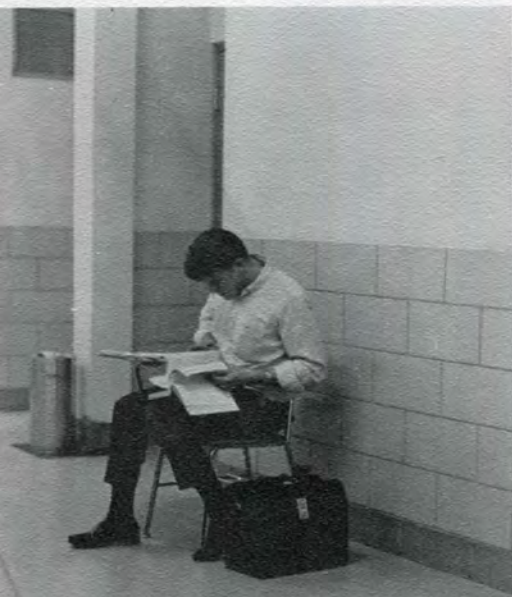
Errol R. Lecz

Kappa Sigma Kappa
A. S. T. D.

Kenneth D. Lumsden



Kenneth H. Mahnick



Thaddeus Carl Maslowski

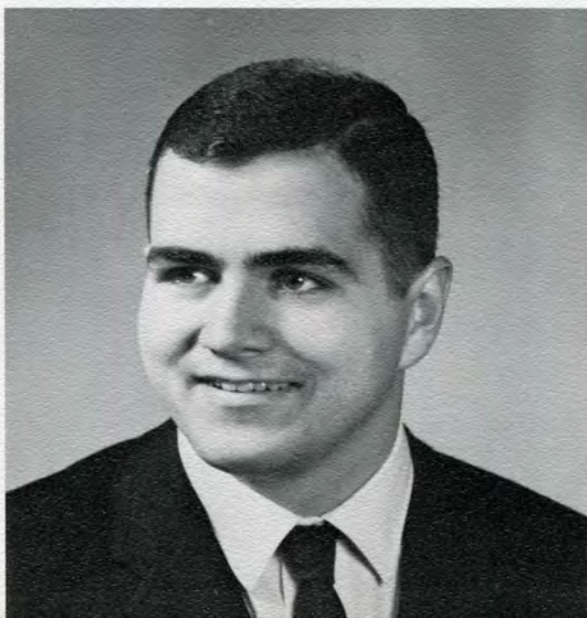
Senior Class Vice-President



Kenneth G. Masters

Senior Class Secretary-Treasurer

Jack E. Miettunen



Gary W. Millikan

Senior Class President
Dean's Honor Roll
I. M. Club



Michael D. Murphy

I. M. Club
Intramural Sports
Hockey Club
Student Activities - Student Assistant



Robert Neumann

I. M. Club
A. A. A.



Randall G. Nylund

Spring Fair - Ass't. Finance Chairman,
Drawing & Exhibits Chairman
Student Government Treasurer
Social Committee
Tech News
I. M. Club
A. M. A.
A. S. T. D.





Michael D. Phillips



Bodo Reinholz

I. M. Club
Intramural Sports
Student Activities - Student Assistant



Robert Allan Rew

I.M. Club
Intra-mural Sports





Thomas Ricker

Circle K. Club
I. M. Club



Richard J. Rymas



Douglas R. Scheider





Gary T. Simpson



Russell Sheh

I. M. Club
Intercollegiate-Marketing Team
Intramural Sports



Charles R. Smolky

S. A. A.

Thomas D. Smyth

*S. M. Club - Vice-President
Marketing Team
S. M. A.*



Maurice St. Germain

Senior Class President

Joseph F. Dunbar





Daniel A. Szlaga

A. M. A.
A. S. T. D.
I. M. Club
Intramural Sports



James J. Tokarczyk

A. S. T. D.
I. M. Club



James A. Taylor

A.S.T.D.
I.M.C.
Circle K
Intercollegiate basketball





Ronald C. Tegge



Steve Varjabedian

S. A. E.
M. S. P. E.
A. M. A.
L. I. T. Alumni Association



Ronnie C. Voorheis

A. S. T. M. E.
A. M. A.



Larry J. Wilson

Senior Class Vice-President
I. M. Club
A. A. A.
Circle K. Club



Raymond Wolfe

Circle K



E. E. Wrask

A. I. D. D.



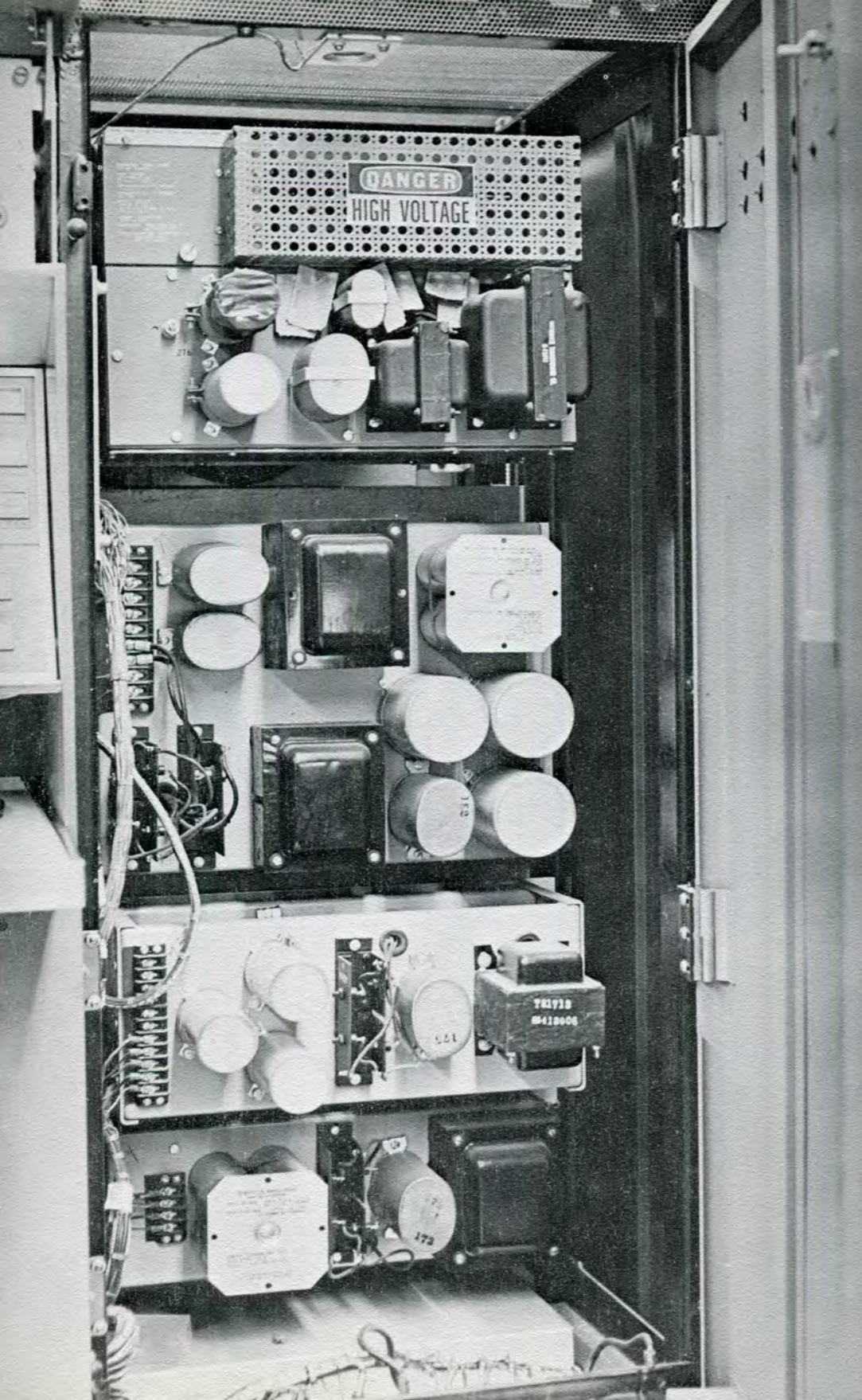
Craig Zaremborg

A. S. T. D.
I. M. Club



Stanley R. Zukin

Circle K, sec.
I.M.C.ub
A.A.A.
Intramural bowling
Intramural baseball



ELECTRICAL ENGINEERING

Richard Charles Anderson

I. E. E. E.
Newman Association - Secretary, Publicity
Intramural Baseball
Chemistry Tutor



Frank Beno

Newman Club - Vice President
I. E. E. E.
Dean's Honor Roll, Scholarship
Tech News Club Writer
Intramural Baseball Captain
Tutor

Donald A. Cerget

Alpha Sigma Phi - President, Treasurer
Junior Class President
Publications Business Manager
Social Committee Chairman
Student Government
I. E. E. E.
Intramural Baseball, Football



Larry D. Creech

W. S. S.



Dennis John Durans

W. S. S. - Vice-President
W. S. S. - Vice-President
Student Government
Other's Office

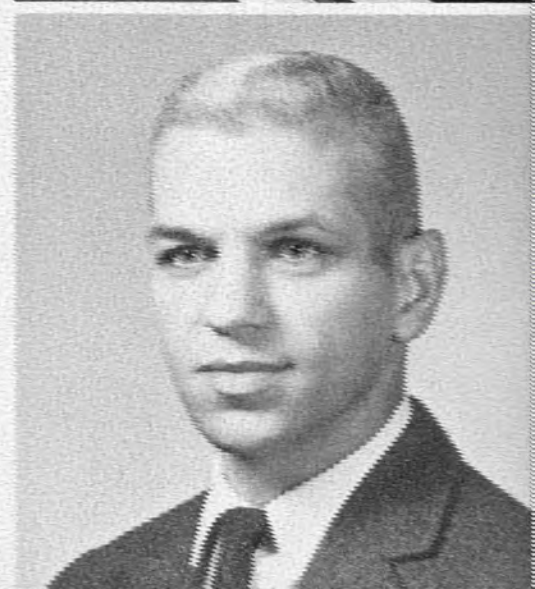


Robert L. Caswell



Charles V. Davis

W. S. S.





James E. Egan



Robert E. Ford

I. E. E. E.
M. S. P. E.

Kenneth J. Gerus

I. E. E. E. - Chairman, Secretary-Treasurer
Dean's Honor Roll, Scholarship
Who's Who





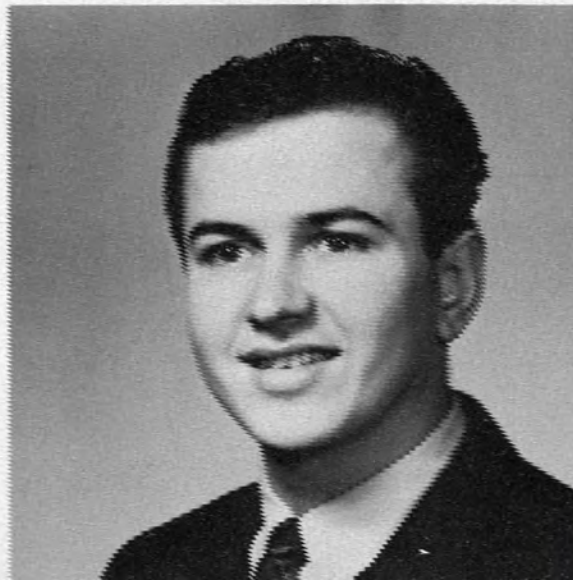
George A. Herantz



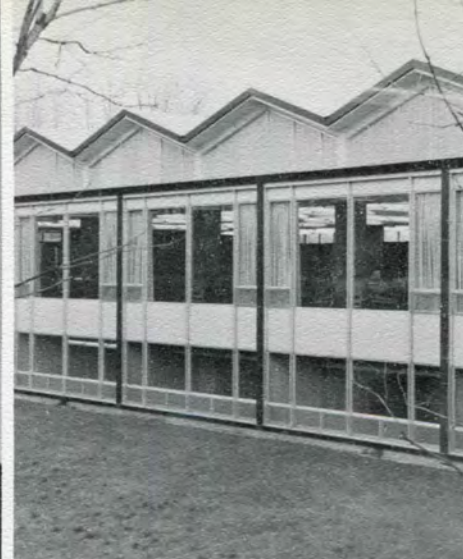
James W. Herantz
C. E. P. P.



Charles W. Herantz
C. E. P. P.
C. E. P. P.
C. E. P. P.
C. E. P. P.
C. E. P. P.



James R. Jones



James W. Koepke

Gary Lee Ludeke

I.E.E.E.
Amateur Radio Club, sec.-treas.,
vice-pres., pres.



Nicholas Phillip Jr.



Robert Floyd Pierce

W. M. M.



David A. Roberts

Donald C. Simpson



Dave R. Skubik



Kenneth L. Smith



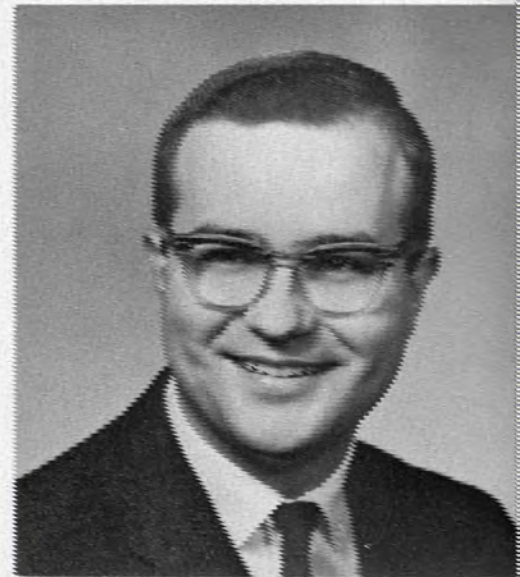


Thomas Szpakowski

W. E. E.

Richard M. Stodola

*Newman Association - President
W. E. E.
Horn Club, Secretary-Treasurer
Intramural Sports
Walter's Wagon*



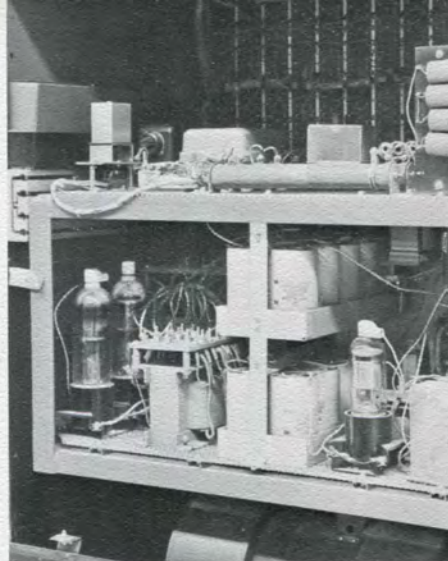
Eugene A. Taurainen





Dominic Vani

I. E. E. E.



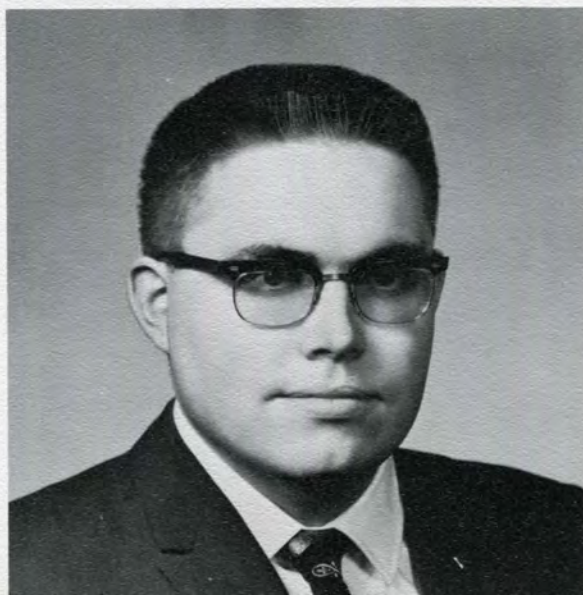
Gary Walker

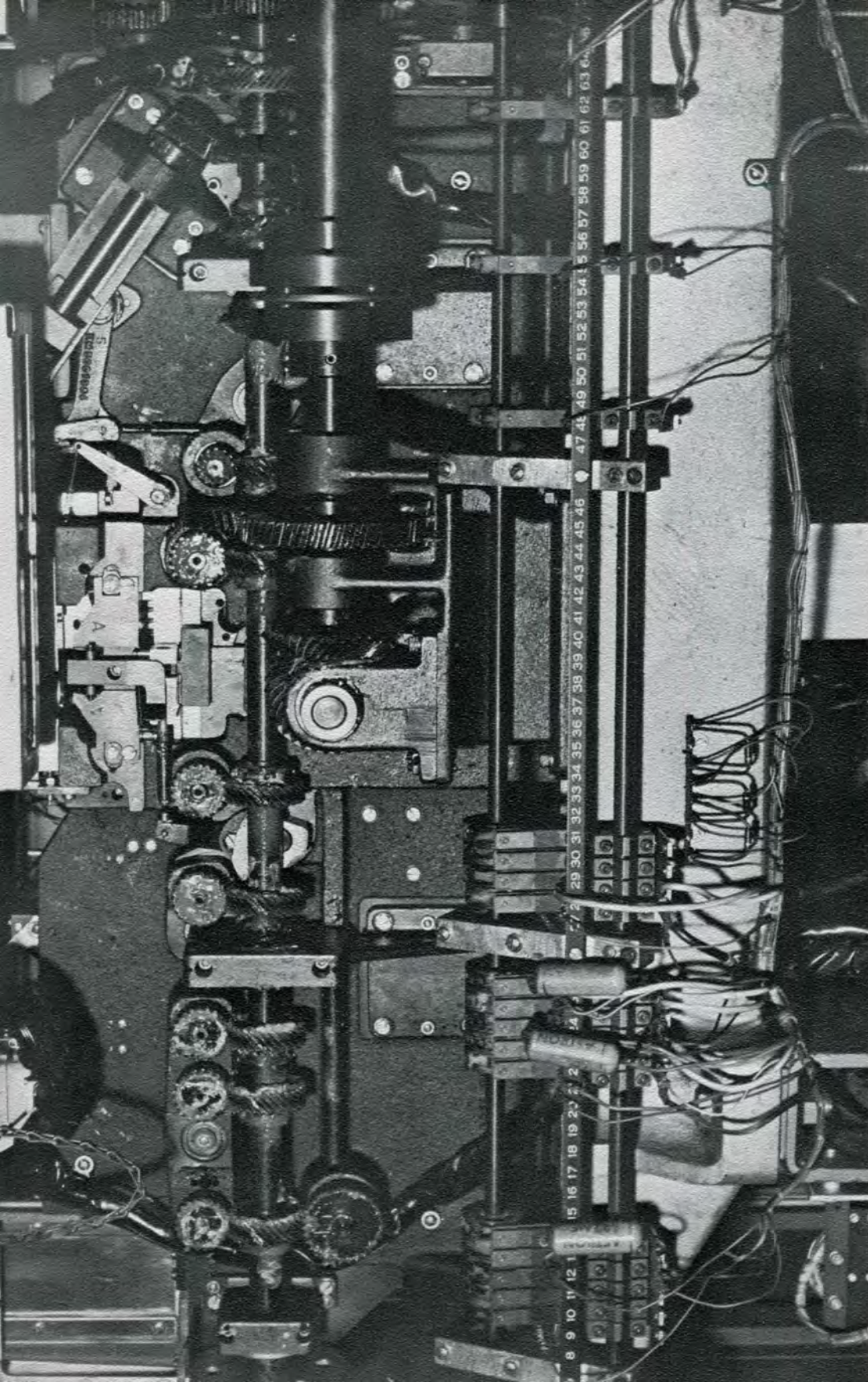
I. E. E. E. - Treasurer



Alan R. Watson

I. E. E. E.





MECHANICAL ENGINEERING

Robert Badya



Carl E. Ballard

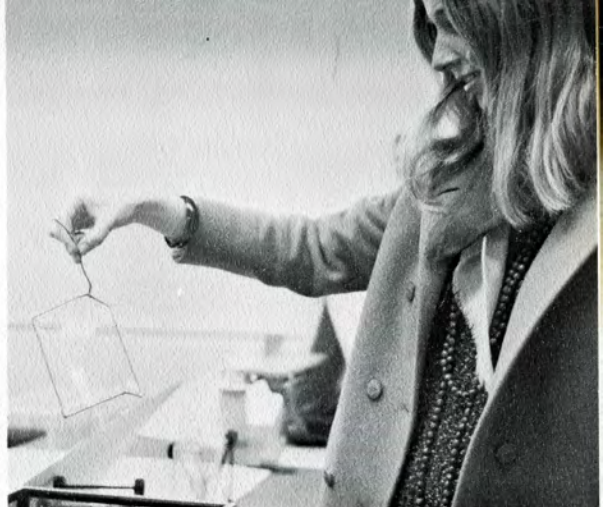
S. A. E.



George C. Balos



Timothy Dawkins

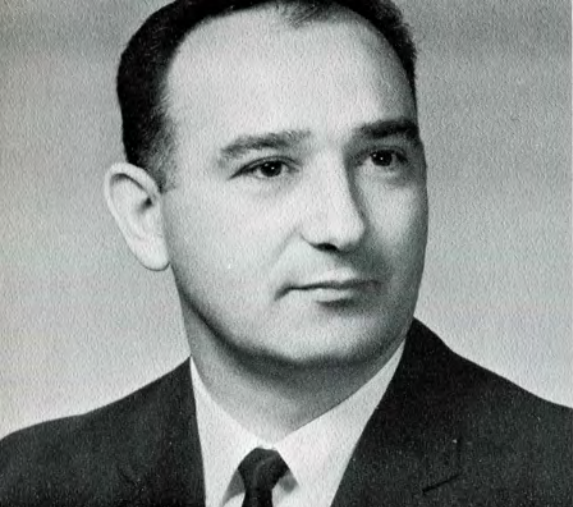


Ronald Flor

S. A. E. - Chairman
Intramural Bowling, Baseball



Gerald T. Hargraves



Lenny J. Borrisove



Carson E. Brown

Ski Club
S. A. E.
M. S. P. E.

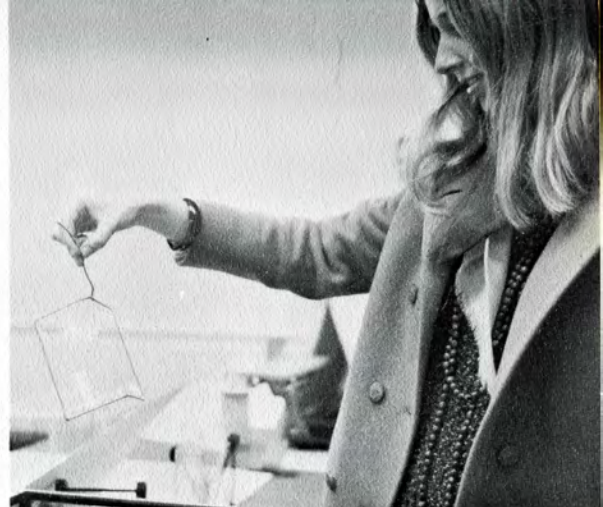


Marion C. Czarnota





Timothy Dawkins



Ronald Flor

S. A. E. - Chairman
Intramural Bowling, Baseball



Gerald T. Hargraves



John W. Honkala

S. A. E.
M. S. P. E.
Student Government
Intramural Sports



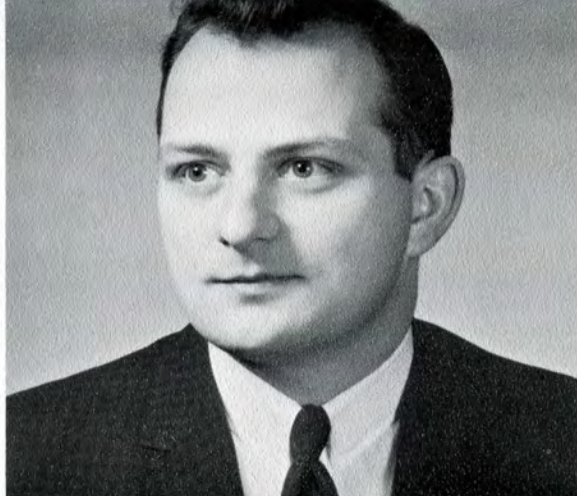
Ronald K. Kelsey

I.M. Club



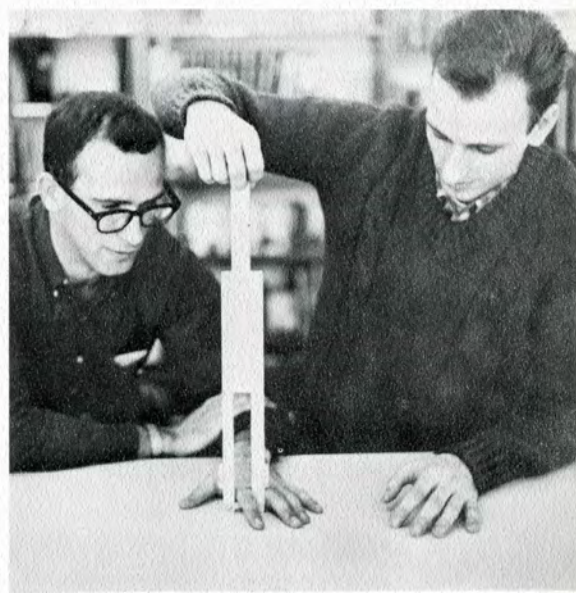
James M. Korby

Brian A. Krainz



John B. Lovelace

S. A. E.
M. S. P. E.
Intramural Sports
Psychology Club
Ski Club



Anthony M. Matelski

S. A. E.
M. S. P. E.
Newman Club
Student Government
Intramural Sports



Bernard J. Mazur



Wayne D. McAuley

S. A. E.
M. S. P. E.

Daniel Orban

S. A. E.



Joseph A. Palazzolo



Kirit R. Patel

S. A. E.
M. S. P. E.

Dennis L. Peters

S. A. E.
M. S. P. E. - President
Newman Association
Intramural Sports



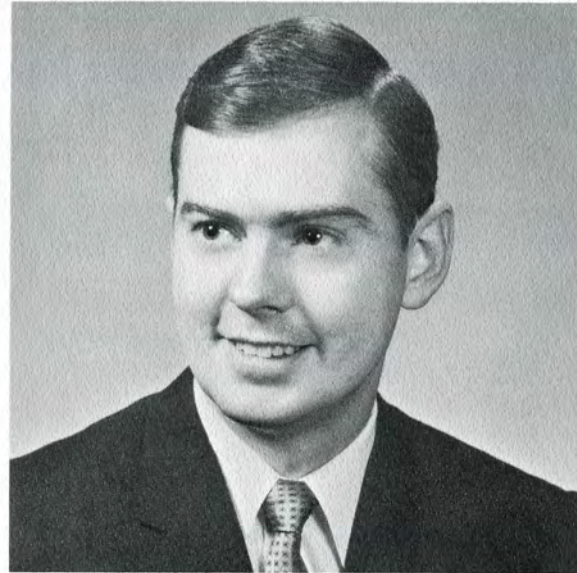


Roy Radakovich

S. A. E.
M. S. P. E.



Douglas W. Ruffley



Leo P. Singer

Randall J. Ryszewski

S. A. E.
M. S. P. E. - Executive Secretary
Newman Association





Kurt Schweigert

S. A. E.
M. S. P. E.
Intramural Sports



Thomas E. Spettel

S. A. E. Secretary-Treasurer
M. S. P. E.



Robert J. Szkotnicki

S.A.E.
M.S.P.E.





Leslie L. Ternner



John A. Urbonas



Gary M. Wilson
S. A. E.





Jerry Wrublewski

S. A. E.
M. S. P. E.



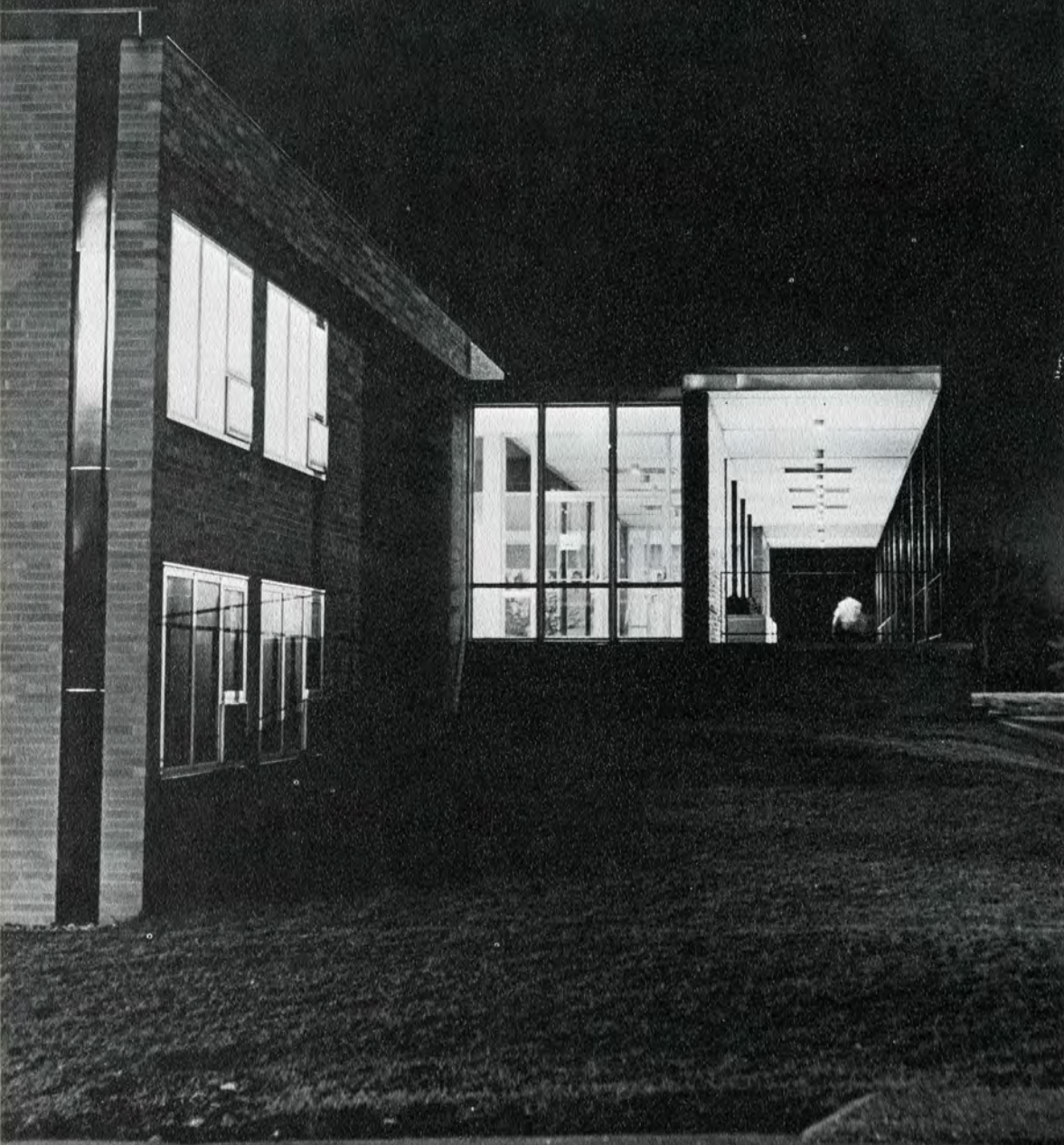
Harold R. Yates

S. A. E.
M. S. P. E.
Sophomore Class Vice-President
Student Council
Intramural Sports



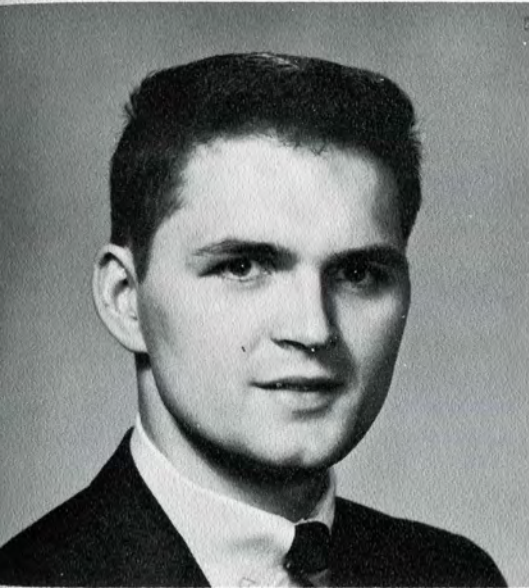
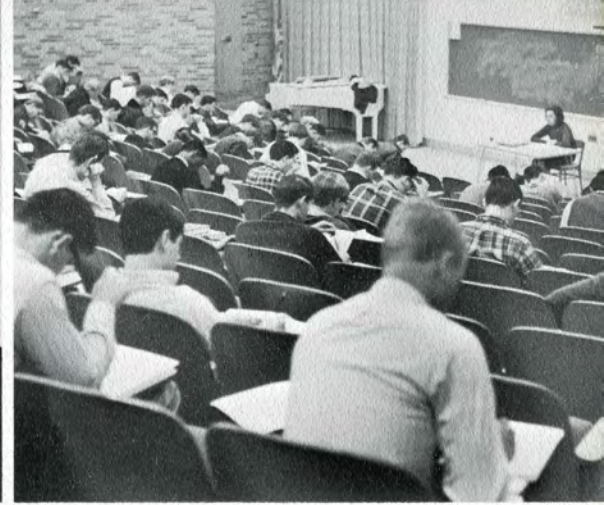
Taylor Robert Zeiss

S. A. E.



**TECHNICAL
INSTITUTE**

Franz H. Breidenich
Electrical and Electronic Technology



Ronald E. Borke
Mechanical Technology

A. S. T. M. E.
Senior Class Vice-President



Sire Costantini
Mechanical Technology



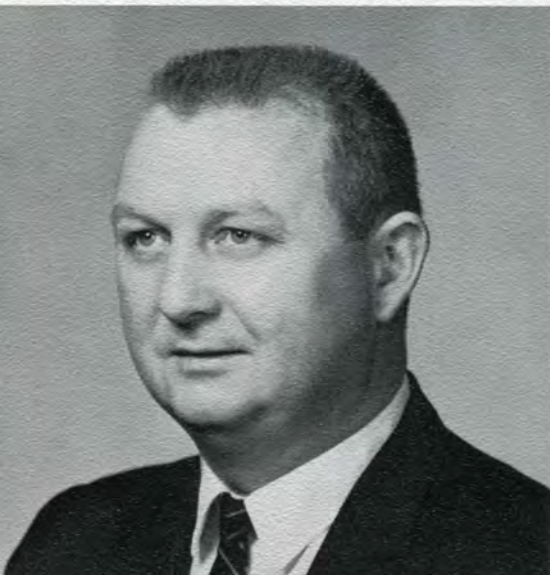
Frank A. Dioszegi
Building Construction Technology

Sigma Kappa Psi

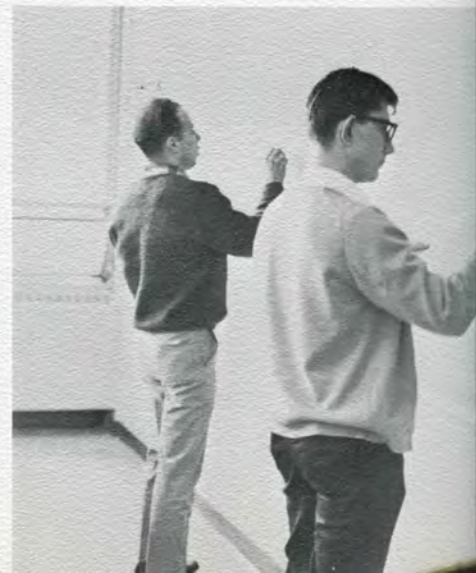
Peter M. Giacom
Electrical and Electronic Technolo



James Ford
Industrial Supervision Technology



Thomas John Fries
Electrical and Electronic Technology





Alvin Hart
Electrical and Electronic Technology



Carl M. Kaniwski
Building Construction Technology
Sigma Kappa Psi



Gary Frederick Kulju
Mechanical Technology

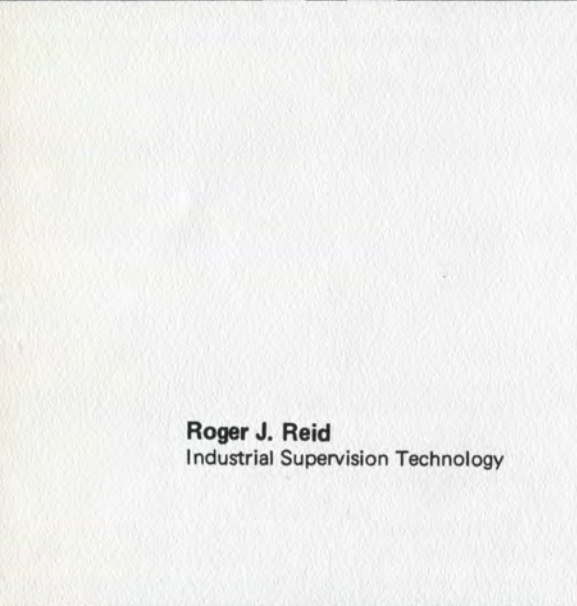


A. S. T. M. E.



John J. Mathe
Electrical and Electronic Technology

Dave Sproule
Mechanical Technology



Roger J. Reid
Industrial Supervision Technology



James Serafino
Mechanical Technology
Senior Class President





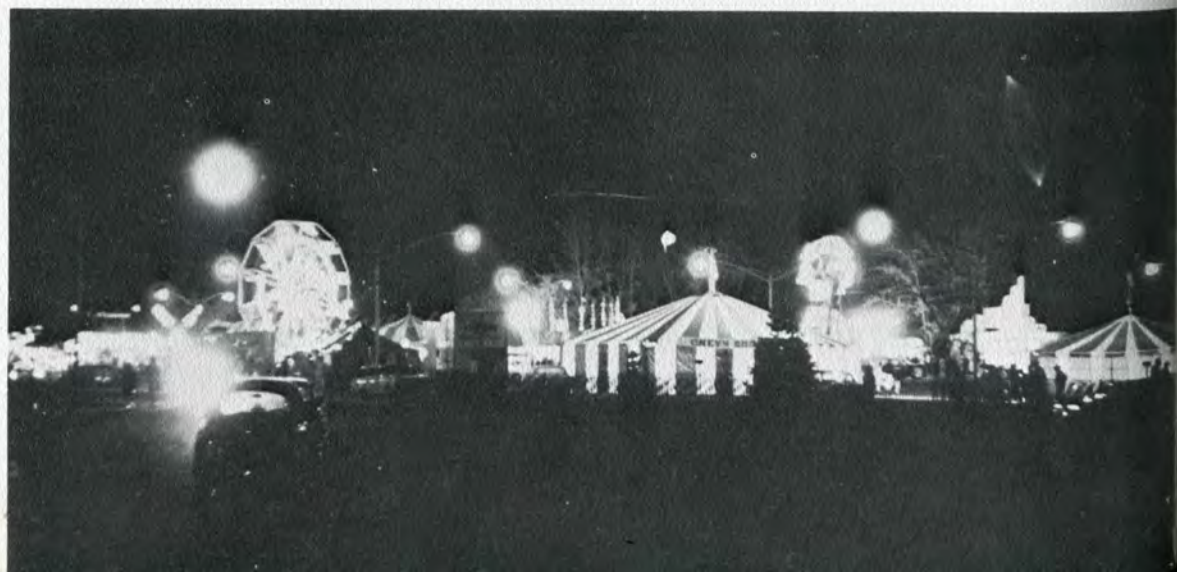
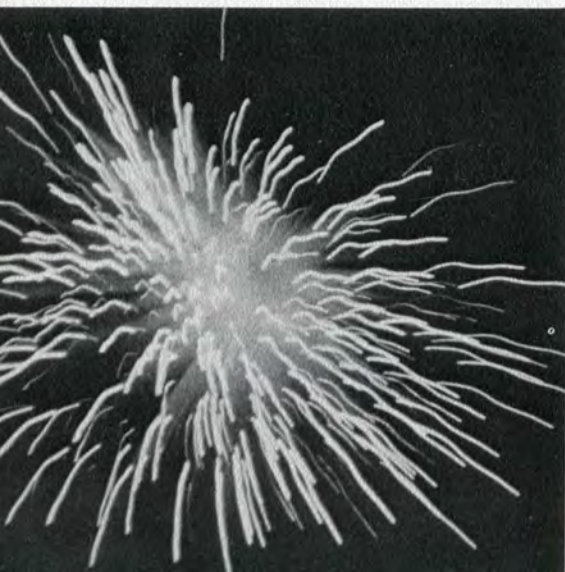
Fred J. Strozeski
Electrical and Electronic Technology

I. E. E. E.

Gary Taylor
Electrical and Electronic Technology



Ernest E. Wise
Mechanical Technology



ACTIVITIES



Hockey Team





GOLF TEAM

1st row

Jim McClellan
Edmund Jositas
Mike Philips
Roger Somerville

2nd row

Dave Franz
Gerry Weber
Bob Alonzo
Chuck Anderson

not pictured

Bill McCormick, Co-capt.
Jim Warner
Dennis Block

OFFICERS

Mike Philips, Co-capt.
Edmund Jositas, Coach
Roger Somerville, Co-capt.





MARKETING TEAM

Thomas Smyth
Russell Sheh
Irwin Harrison
Gary Dikin
Donald Ashton, Captain

not pictured
Prof. L. Lahr, Faculty Advisor





ORGANIZATIONS



STUDENT GOVERNMENT

MEMBERS - left

1st row
 Art Sutter
 Keith Baker
 Jacquie Arredondo
 Homer Harrison
 Tom Weir

2nd row
 Tom Smyth
 Tim O'Connor
 Don Cergel
 Terry Bilovus
 Chuck Lyons
 John Smith
 Peggy Shuart

3rd row
 Louis Vassilakos
 Doug Rudy
 Steve Shotwell
 Mike Ross
 Dean Yost
 Jim Storfer
 Ira Jannet
 Larry Wilson

5th row
 Norm Hughes
 John Fosset
 John Honkala
 Jack Koepfgen
 Anthony Matelski
 Mr. Lackey, Faculty Advisor

4th row
 Philip Quidort
 Bob Prange
 Frank Gaddy
 Randy Nylund
 Frank Farina
 Jim Wiggins
 Al Webb



Spring Fair Committee

Mark Stypinski
 Art Sutter
 Frank Farina
 Randy Nylund
 Dennis Kapp
 Keith Baker
 Bob Pasko
 Frank Goode



OFFICERS

Tom Weir, Rec-sec.
 Keith Baker, Vice-pres.
 Art Sutter, Pres.



SENIOR CLASS

Gary Millikan, Pres.
Larry Wilson, Vice-pres.
John Brown, Sec-treas.



JUNIOR CLASS

Joe Kwiatkowski, Sec-treas.
Jim DeDobbeleer, Pres.
Tom Weir, Vice-pres.



SOPHOMORE CLASS

Bill Bennett, Vice-pres.
Al Webb, Pres.
Dean Yost, Sec-treas.



FRESHMAN CLASS

Doug Rudy, Sec-treas.
Steve Shotwell, Pres.
Louis Vassilakos, Vice-pres.



YEARBOOK

"L" BOOK

STAFF

on roof
Jim Barrett, Photographer

standing
Connie Schoensee
Sharon Obeler
Ron Johnston, Editor
Lester Jones, Asst. Editor

sitting
Don Cerget
Jacquie Arredondo

not pictured
Linda Lathan
Leonard Gyselink

"We get by with a little help from our friends."





TECH NEWS

STAFF - left

seated

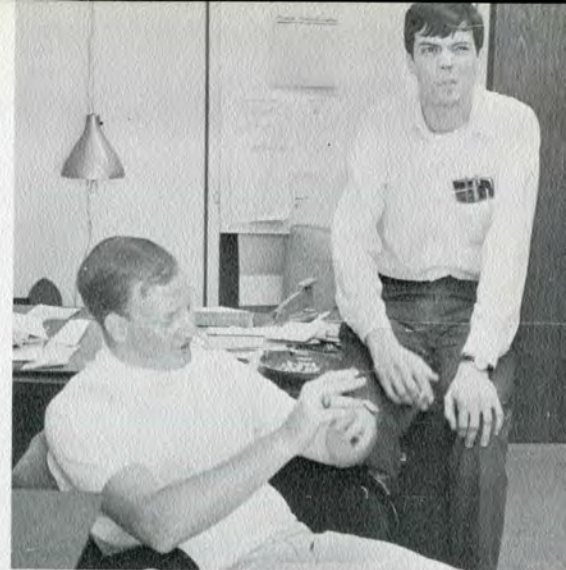
Cheryl Wrobel (Tech Daily Editor)
Sue Willard
Jim Storfer, Editor-in-chief
Dennis Ziolkowski

standing

Mike Ross, News Editor
Joe Hanks, Exchange Editor
Don Cerget, Business Mngr.
Randy Nylund (Tech Daily Editor)
Quint Greene, Feature Editor
Emil Silarski, Photographer

not pictured

Gary Theunick
John Smith
Perry Valle
Harold Jackson
Terry Burke
Joe Smith
Wilson Daugherty, Faculty Advisor
Leland Lahr, Faculty Advisor





ALUMNI

Officers and Directors of the
Alumni Association &
Russell Lawrence Foundation

1st row

Leo A. Sanker
Hurst Wulf
John S. Ellis
Michael L. Mitchell
Sam E. Dukes
Murray Lidkea

2nd row

Henry J. Murawski
Heiko Thieme
Wallace J. Kaum
Arthur W. Fischer
Robert Offenstein
John F. Austermann
John Fawcett



CIRCLE K CLUB



LAWRENCE
INSTITUTE OF TECHNOLOGY
SOUTHERN MICHIGAN



CIRCLE K

MEMBERS - left

1st row

Mike Lenz
Mark Cooperman
Roman Fotchuk
Domenick Veneri
Gary Jensen
Rob Champlin
Robert Bott

2nd row

Nick Velch
Jim Jaster
Tom Rickker
Mark Stypinski
Andy DiMartino
Patrick Bracken
Stan Zukin

OFFICERS - right

seated

Gary Jensen, Pres.

standing

Jim Jaster, Treas.
Nick Velch, Vice-pres.
Stan Zukin, Sec.





DELTA TAU SIGMA

MEMBERS - left

Emily Loizon
Becky Sinclair
Sue Willard
Peggy Shuart
Debby Walker
Connie Schoensee
Chris Fritsch
Mrs. A. Steinberg
Jacquie Arredondo
Linda Lathon
Ellen Gersh

not pictured
Sharon Obeler
Cheryl Wrobel

THE OFFICERS - right

Sue Willard, Parliamentarian
Peggy Shuart, Vice-pres.
Ellen Gersh, Treas.
Jacquie Arredondo, Pres.
Mrs. A. Steinberg, Advisor
Linda Lathon, Sec.





MEMBERSHIP:

1st row

Paul Ross
 Quintus Greene, Co-chairman
 Robert Smith
 Terrence Jones
 Gregory Ross
 Victor Cook

2nd row

Lester Jones, Chairman
 Walter McNeil
 Thomas Rhodes
 Andrew Manning
 Linda Lathon
 Ezra Carroll
 Arthur Wise
 Harvey Wade
 Calvin Harbour

3rd row

Ronald Owens
 John Crockett
 Philip Varner
 Leslie Wardell
 Ronald Miller
 Juan Haygood, Treas.
 Rodney Dryden, Rec-sec.
 Harold Jackson

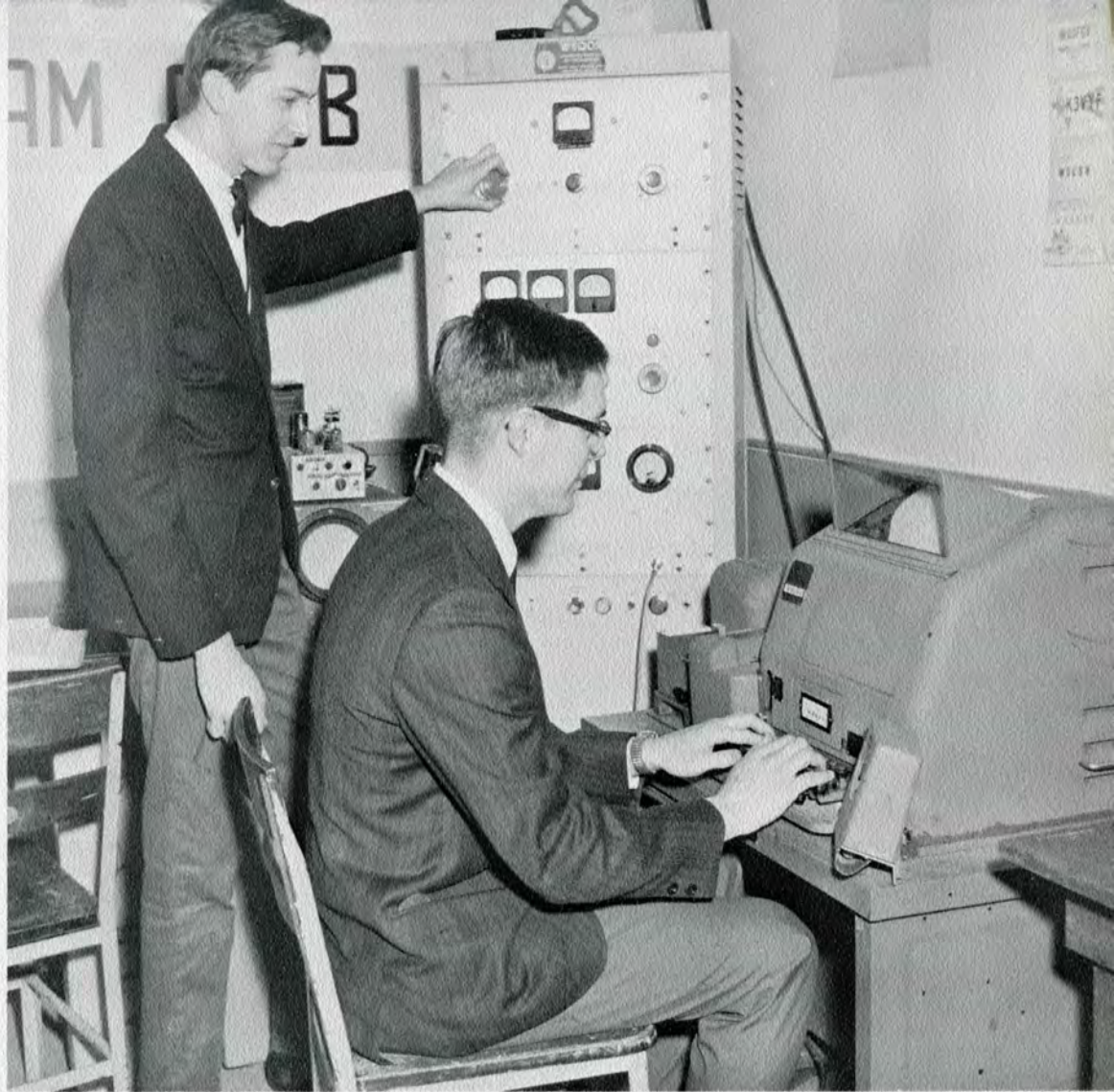




HAM CLUB

seated
Steve Maki

back
Steve Shotwell
Rick Mark, Pres.
Ed. Rojowski
Nandor Zimmersmann, Advisor
Bill Lutz





NEWMAN ASSOCIATION

MEMBERS - left

1st row

Rich Hayford
Gerry Hoefflein
Terry Burke
Tom Soboczynski
John Smith
Rudy Unger

2nd row

Fr. Steve Reckker
Cheryl Wrobel
Rich Srodawa
Frank Beno
Art Sutter
Dennis Rushlau

3rd row

Tom Truphcouich
Rich Anderson
Jim McClellan
Jack Koeffghon
Joe Hanks F
Fr. Bagley

OFFICERS

front

Terry Burke, off-campus Social Chairman
Gerry Hoefflein, on-campus Social Chairman
Rich Anderson, Publicity Chairman

back

Fr. Bagley, Co-director
Frank Beno, Vice-pres.
Fr. Reckker, Director
Cheryl Wrobel, Business Manager
Tom Soboczynski, Treas.
John Smith, Pres.
Jim McClellan, Sec.





PSYCHOLOGY CLUB

MEMBERS - left

kneeling

Robert Hubbard
Dean Yost
John Smith

1st row

Jim Kirk
Frank Farina
Terry Bilovus
Peggy Shuart
Al Webb
Van Churchill
Jim DeDobbeleer
Joe Kaye
Karl Kandler

2nd row

Art Sutter
Doug Rudy
Frank Gaddy
Gary Theunick
Ron Mucioli
Ken Hojnacki
Jim Wiggins

THE OFFICERS - right

Frank Gaddy, Pres.
Mr. Jankowske, Faculty Advisor
Peggy Shuart, Sec-treas.
Frank Farina, Vice-pres.





SKI CLUB

THE OFFICERS - right

Tom Evans, Corres-sec.
Dean Yost, Sec-treas.
Terence Bilovus, Pres.
Frank Nardoni, Vice-pres.
Al Rossi, Pub. Chairman



MEMBERS - left

1st row
Erick Riese
Doug Rudy
Bob Seeley
Michel Miklasewski
Don Nance
Dick Nelden
Dean Yost
Karl Kandler
Frank Nardoni

2nd row

A. Yost
Bob Prange
Tony Taccogna
Peggy Shuart
Sue Willard
Chris Fritsch
Connie Schoensee
Terence Bilovus
Tom Evans
Al Rossi



3rd row

Bill Lutes
Frank Farina
Mike Mapes
Ken Cyll
Steve Krystoff
Frank Gaddy
Don Kinn
B. Yost
Gerrit Stemmer
Ron Johnston





MEMBERS

kneeling
 Dan Ventmugua
 Bill Abbe
 Bruce Meinert
 Claude Cady
 Terril Tompkins
 Gordon Petrous
 Jerry Hoeflein
 John Hall
 Rick Hall

1st row
 Dr. E. W. Pellerin
 Phil Quidort
 Don Fullerton
 Frank Lakish
 Sue Willard
 Terrence Biernat
 John Pesavento
 Blake Green
 Doug Shoemaker
 Bob Hubbard
 Tony Bair
 Don Pratt
 Gordon Burnham

2nd row
 Frank Zmuda
 Robert Bay
 Cliff Drochak
 Phil Forsyth
 Jim Nichols
 Ted Manos
 Doug Brower
 Jim Eastman
 Dale Hurttgam
 Ron Dean
 Steve Yagian

3rd row
 Fred Brauning
 Add Igleheart
 John Ziulkowski
 Don Kinn
 Lynn Silkworth
 Carlos Garcia
 Leo Salvaggio
 Barry Hobbs
 Patrick Landon
 Roger Marshall
 Rick Smith



OFFICERS - right

kneeling
John Pesavento
Leo Salvaggio, Vice-pres.
Lynn Silkworth
Frank Zmuda, Sec.

standing
Patrick Landon
Don Pratt, Treas.
Frank Lakish, Sec.
Dr. E. W. Pellerin, Advisor
Terril O. Tompkins, Pres.
Rick Smith, Vice-pres.
Phil Quidort



A. S. T. D.

1st row

Don Ashton
David Pearson
Merle Henderson
Tom Smyth
Robert Bartnicki
Daniel Szlaga
Sergio Gougiolay
Jim DeDobbeleer
Don Jackson

2nd row

Robert Pillow
Sheldon Woodard
Randy Nylund
Frank Goode
Art Sutter
Keith Baker
Ron Muccioli
Jim Jaster
Nick Velch

3rd row

Gary Dikin
John Gondol
Irwin Harrison
Howard Hendricks
Gary Simpson
Hugh Diamond
Lyle Kaarle
Tom Sata
Walter Sedlar
Gerald Bania

4th row

Gerald Miles
Michael Zaks
William Brown
Ron Johnston
Gil Lewis
Orville Busby
Andrew DiMartino
Max Harris
Vytautas Mystykus
Robert Pasko



THE OFFICERS

Gerald Miles, Vice-pres.
Gilbert Lewis, Pres.
John Gondol, Treas.
William Brown, Sec.





MEMBERS

1st row

Joe Kaye
 Jim Dedobbeleer
 Don Jackson
 Don Ashton
 Mike Phillips
 Merle Henderson
 Dave Pearson
 Mike Zaks
 Gary Dikin
 Tom Smyth

2nd row

Bob Pillow
 J. Rouls
 Howard Hendricks
 Ken Knott
 Robert Bartnicki
 Dan Szlaga
 Bob Pasko
 Walt Sedlar

3rd row

Gil Lewis
 Mike Finney
 Max Harris
 Steve Hudak
 Jim Jaster
 Ron Mucioli
 Russ Sheh
 Sergio Goquiolay

4th row

Gerry Miles
 Orville Busby
 Sheldon Woodward
 Tom Sata
 Vytautas Musteikis
 Gary Simpson
 Hugh Diamond
 Dennis Hankin
 Lyle Koarle

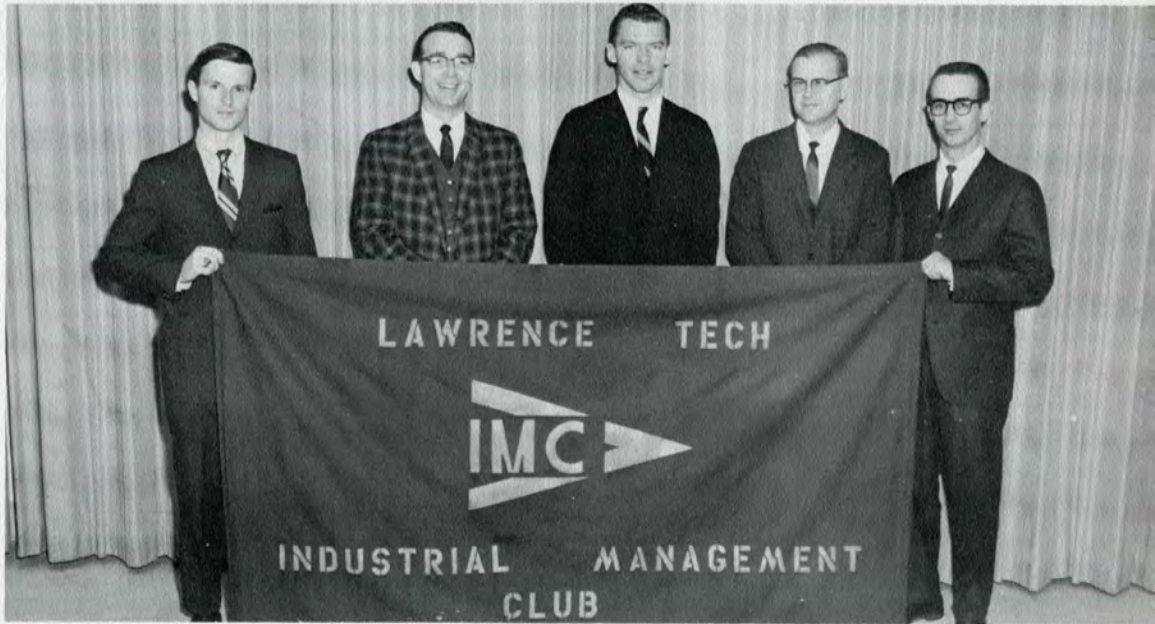
5th row

Nick Velch
 Andy DeMartino
 Ray Spence
 Randy Nylund
 Jerry Bania
 John Gondol
 Art Sutter
 Kieth Baker
 Frank Goode
 John Brown

6th row

Professor Buck
 Bill Brown
 Ron Johnston
 Irwin Harrison
 Professor Lahr

INDUSTRIAL MANAGEMENT CLUB



THE OFFICERS

Thomas Smyth, Vice-pres.
Professor Lahr, Advisor
Irwin Harrison, Pres.
Professor Buck, Advisor
Robert Bartnicki, Sec. Treas.





A. M. A.

MEMBERS - left

1st row

Donald Ashton
Robert Bartnicki, Pres.
Thomas Smyth
Daniel Szlaga

2nd row

Randy Nylund
Robert Pascoe
Irwin Harrison
John Brown
Raymond Spence

not pictured

Leland Lahr, Faculty Advisor
John Beedell
Joseph R. Binder
Thomas C. Bowen
Ralph A. Brandi
Rocklin G. Brandstadt
Harold B. Brown
Michael F. Dalton
Gary Dumas
Steven W. Heaton
Raymond J. Jouick
Larry Lentner
Richard R. Lovelace
Dennis M. MacPetrie
Larry L. Martin
Lawrence Miller
Louis Paull
R. L. Rainson
James E. Roulo
Joe Schmidt
Philip Schuricht
Charles R. Smith
Robert J. Spencer
Charles B. Vaughn
Jerry Viene
James J. Viviano
John Watson
Marvin L. Wehr





I. E. E. E.

THE MEMBERS - left

1st row

David Deering
Joseph Sequin
James Gentry
Kenneth Gerus
James Hemp
Thomas Szpakowski
Kenneth Vankarsen
Don Odle
Paul Banasak
Larry Lacey

2nd row

Gary Ludeke
Frank Beno
Robert Czewski
Paul Wal
Gary Walker
Paul Riethmeier
Dominic Vani
Greg Dickerhoof
Don Richards
Daniel Agnello
John Lundquist
Herschel Frinblatt
Charles Davis
Donald Cerget

3rd row

Robert Pierce
Larry Creech
Dennis Dureno
Jerry Nelson
Larry Woodard
Daniel Huber
Kenneth Smith
Robert Desoff
Richard Anderson
John Schmalzel
Allen Watson
Michael Patty



THE OFFICERS - right

Mr. D. C. Beard, Advisor
Kenneth Gerus, Chairman
Dennis Dureno, Vice-Chairman
Gary Walker, Treas.
James Gentry, Sec.



A. S. T. M. E.

MEMBERS - left

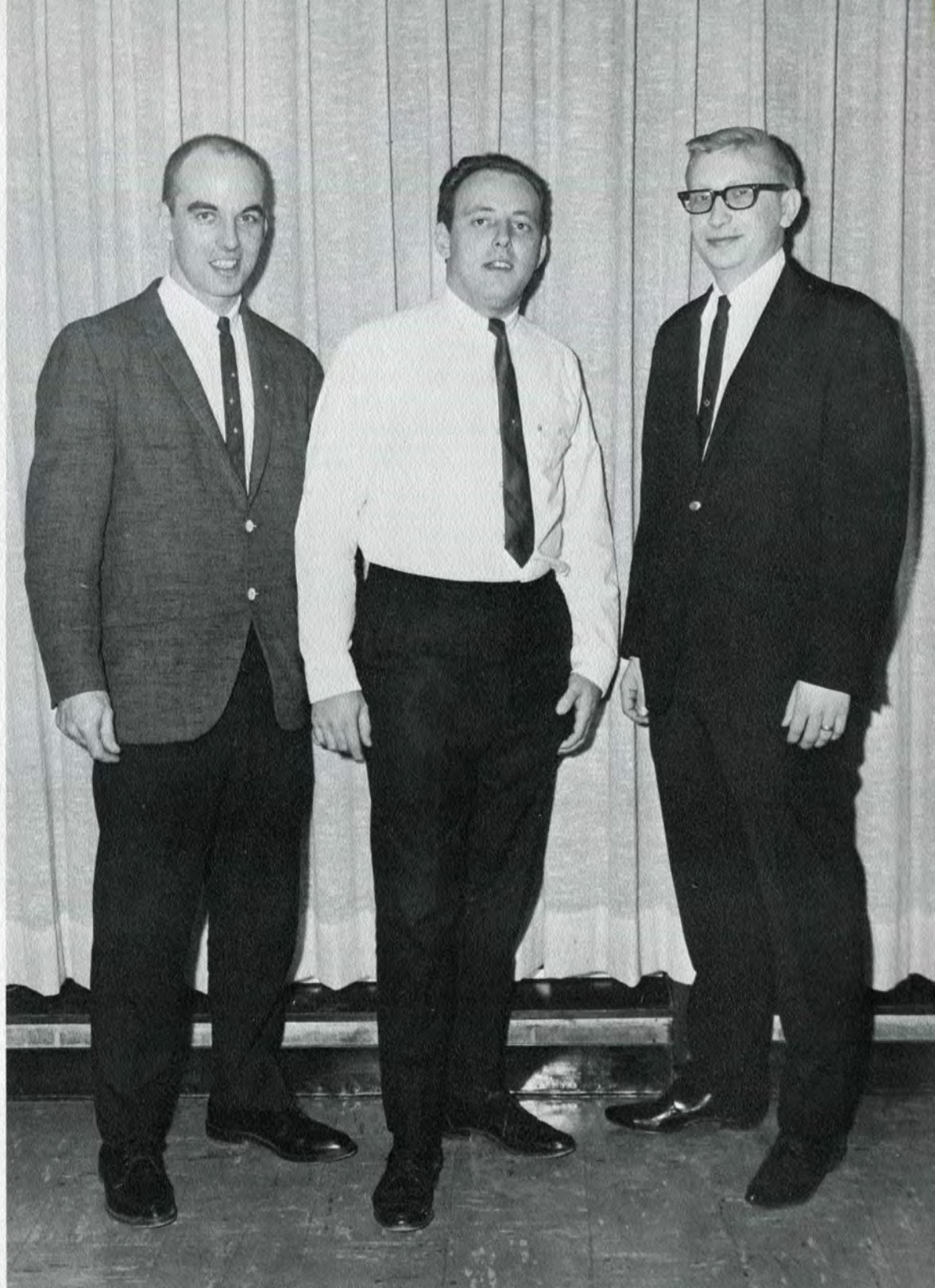
Mardon V. Murphy
James A. Pachmayer
Fredrick D. Schrafft, Jr.
Arnold J. Blythe, Faculty Advisor
Louis Barbieri
David F. Cyplik
Thomas W. Rogers

not pictured

Stephen K. Kurtice, Chairman
Richard Crowe, Sec-treas.
Charles C. Johnson, Coordinator

THE OFFICERS - right

Thomas W. Rogers, 3rd Vice-Chairman
James A. Pachmayer, 1st Vice-chairman
David F. Cyplik, 2nd Vice-chairman





M.S.P.E.

kneeling

James M. Barrett
Kirit R. Patel
Kenneth E. Van Karsen
Randall J. Ryszewski
Harold R. Yates
Wayne D. McAuley

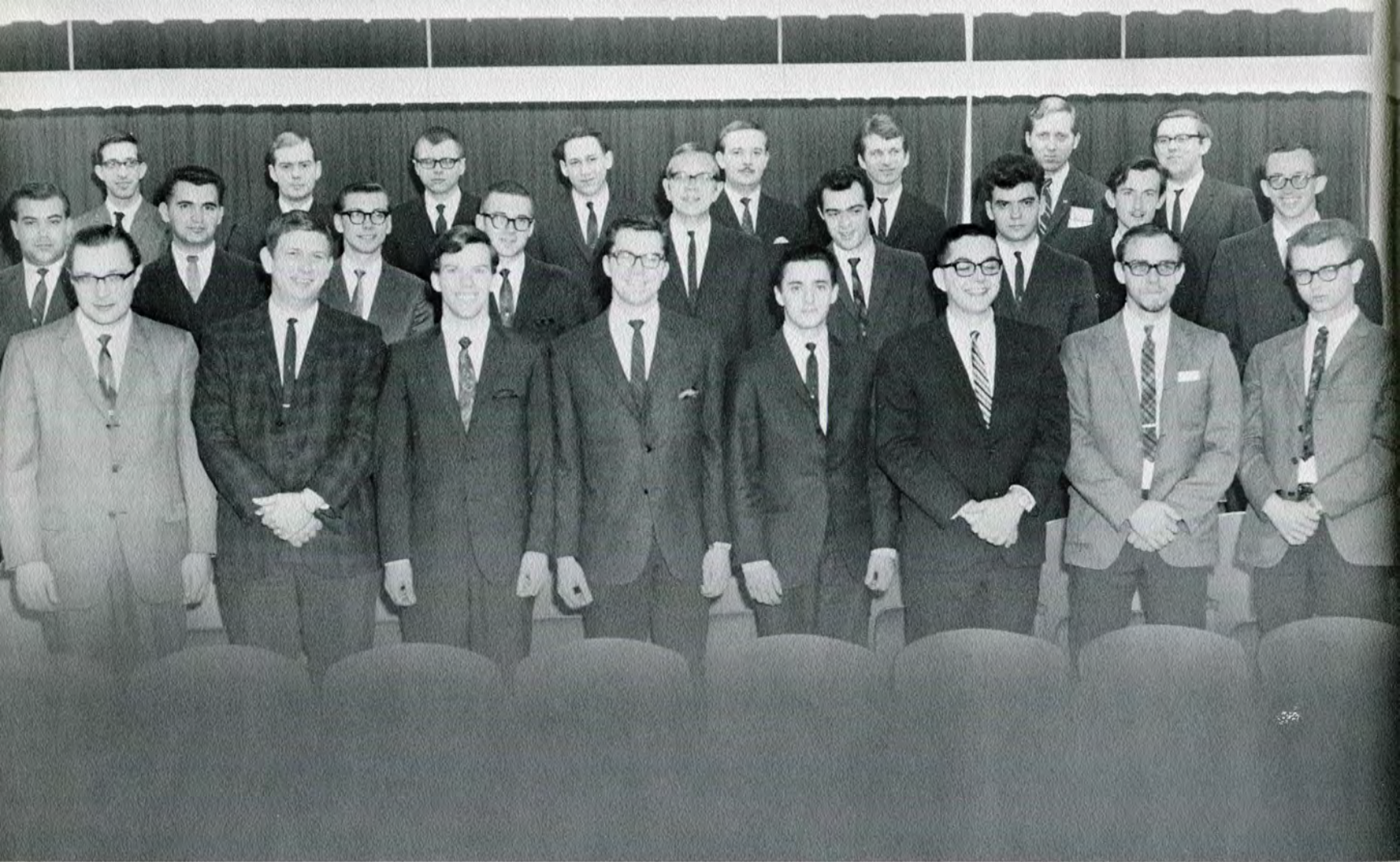
back

Dennis J. Dureno
Paul R. Reithmeier
Robert Serlin
Roy Radakovich
Philip T. Koneda
John B. Lovelace
Taylor R. Zeiss
John W. Honkala
Harold Parker
Carson E. Brown
Thomas E. Spettel
Anthony M. Matelski
Dennis L. Peters
Kurt L. Schweigert

THE OFFICERS

Randall J. Ryszewski, Exec. sec.
Roy Radakovich, Treas.
Dennis J. Dureno, Vice-pres.
Dennis L. Peters, Pres.





S. A. E.

THE MEMBERS - left

1st row
Mr. Skuta
Harold Parker
Donald Ashton
James Barrett
Perry Valle
Thomas Spettel
Donald Odle
Harold R. Yates.

2nd row
Wayne McAuley
Roy Radakovich
Randall Ryszewski
Dennis Peters
John Honkala
Marty Withkop
Robert Serlin
Don Richards
Ron Flor

3rd row
Philip Koneda
Doug Ruffley
Tony Matelski
T. Robert Zeiss
Kurt Schweigert
Jerry Wrublewski
John B. Lovelace
Robert Desoff

THE OFFICERS - right

Ronald Flor, Chairman
Douglas W. Ruffley, Vice-Chairman
Thomas Spettel, Sec-treas.





INTER-FRATERNITY COUNCIL

Charles Lyons, Treas.
Paul Reithmeier, Sec.
James Wiggins, Chairman
Andy Farrell





PHI KAPPA UPSILON

THE BROTHERS - left

kneeling

Jim DeDobbeleer
Warren Halley
Phil Musto
Tim O'Connor

back

Arno Hellthaler
Harry Downs
Andy Farrell
Ron Muccioli
Mike Fitzpatrick
Joe Kaye
Don Jackson
Bud Varnum
Craig Lyons
Ron Colcernian
Larry Krajewski
Larry Deniston
Duane Lowell

THE OFFICERS - right

Phil Musto, Vice-Pres.
Tim O'Connor, Rec-sec.
James DeDobbeleer, Pres.
Warren Halley, House Mngr.
Mike Fitzpatrick, Treas.





ALPHA SIGMA PHI

THE BROTHERS - left

1st row

Dan Huber
Paul Riethmeier
Brian Judge
Gary Churchill
Tom Krauth
Don Cerget
Keith Baker
Ed Gordon
Tom Jenzen

2nd row

Bill Steim
Don Glaser
Bill Bennett
Bill Whitaker
Tom Weir
Marvin Peck
Tom Hansz

not pictured
James Tabb
Thomas Schlarman
Rich Rodgers

THE OFFICERS - right

Paul Riethmeier, Rec-sec.
Tom Weir, Treas.
Tom Krauth, Sgt-at-arms
Bill Whitaker, Vice-pres.
Don Cerget, Pres.
Tom Jenzen, Corres-sec.
Tom Hansz, Marshal



THE PLEDGES

Dennis Schlitt
Sevy Martin
John Lambert
Rick Oldberg
Rick Hall
Dennis Slavin
Mal Nark



KAPPA SIGMA KAPPA

THE BROTHERS - left

1st row

Dan Fifer
Dennis Kristoff
Paul Daniel
Jim Gentry
Roger Somerville

2nd row

James Richardson
Terry Carlson
Gerry Weber
Al Fitzpatrick
Dick Czubaj
Jim Kirk
Louie Dorka

not pictured
Bill McCormick
Chuck Lyons
Paul Hunter
George Drake
Larry Lack
Steve Becker
Ron Koller
Jerry Najarian
Joe Magnio
Errol Letz
Doug Kass
John Szlenkier
Gary Ambrozy
John Warner

THE OFFICERS - right

Roger Somerville, Pledgemaster
Paul Daniel, Vice-pres.
Al Fitzpatrick, Treas.
Jim Kirk, Sgt-at-arms
Jim Gentry, Sec.





KAPPA PHI SIGMA

THE BROTHERS - left

Dean Yost
Frank Farina
Jim Wiggins
Frank Gaddy
Terry Bilovus
Gerrit Stemmer
Al Webb
Ken Hojnacki
Van Churchill
Gary Theunick

not pictured
Bob Prange
Jerry Obdziejewski, Treas.



THE OFFICERS - right

Mr. Williams, Advisor
Terry Bilovus, Vice-pres.
Al Webb, Rec-sec.
Mr. Jankowske, Advisor
Frank Farina, Pres.



THE PLEDGES

Frank Gaddy (brother)
Tom Soboczynski
Karl Kandler, jr.
Dick Nelden
Rob Hubbard



LAWRENCE
INSTITUTE OF TECHNOLOGY

ADVERTISING



Continued Success to L.I.T.

TAYLOR & GASKIN, INC.

Engineers * Equipment Fabricators* Erectors

6440 Mack Avenue Detroit, Michigan - 48207 925-9550

Congratulations to the class of 1968.

**We welcome
you into the membership of The Alumni Association.**

Board of Directors

ALUMNI ASSOCIATION

LAWRENCE INSTITUTE OF TECHNOLOGY

ADVANCE

Stamping Company

SMALL STAMPINGS
SPECIALISTS

12025 DIXIE DETROIT 39, MICHIGAN

CADMET CORP.

PRECISION CASTINGS
LOST WAX PROCESS

JE 9-2220

20801 Ryan Road Detroit 39, Michigan

HOSPITAL HOST

DIVISION OF

CANTEEN CORPORATION



CAMPUS HOST

Complete Food

&

Vending Service

AJAX FORGING

&

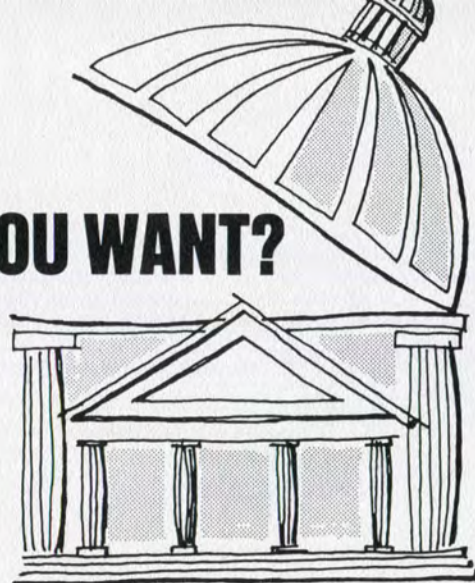
CASTING CO.

205 ADAIR STREET

DETROIT MICHIGAN

WHAT KIND OF FUTURE DO YOU WANT?

The American free enterprise system lets you call the shots, lets you decide your own future. Consumers Power is part of this system as a business-managed, investor-owned, tax-paying electric and natural gas utility. Looking for challenge and opportunity? Join our public service oriented team.



Where "CP" stands for continuing progress



**Consumers
Power**

General Offices: Jackson, Mich.

" CELEBRATING OUR 40TH YEAR "



UTICA, MICHIGAN
731-8110

BIRMINGHAM, MICHIGAN
644-9000

WALLED LAKE, MICHIGAN
624-1595

Congratulations . . . L. I. T. !

from

D-M-E Corporation

Originators and Manufacturers of

Standard Mold Bases for

Plastic Molding & Die Casting

STUDENTS

Many members of your alumni, as outstanding American citizens, have set high standards in a profession which has done so much to make this country of ours a world leader.

We need more and more engineers like that who can think straight and act vigorously to keep America the land of opportunity.

You gentlemen have the equipment for that leadership. We are depending on YOU.

NATIONAL BROACH & MACHINE CO.

5600 St. Jean Detroit, Michigan

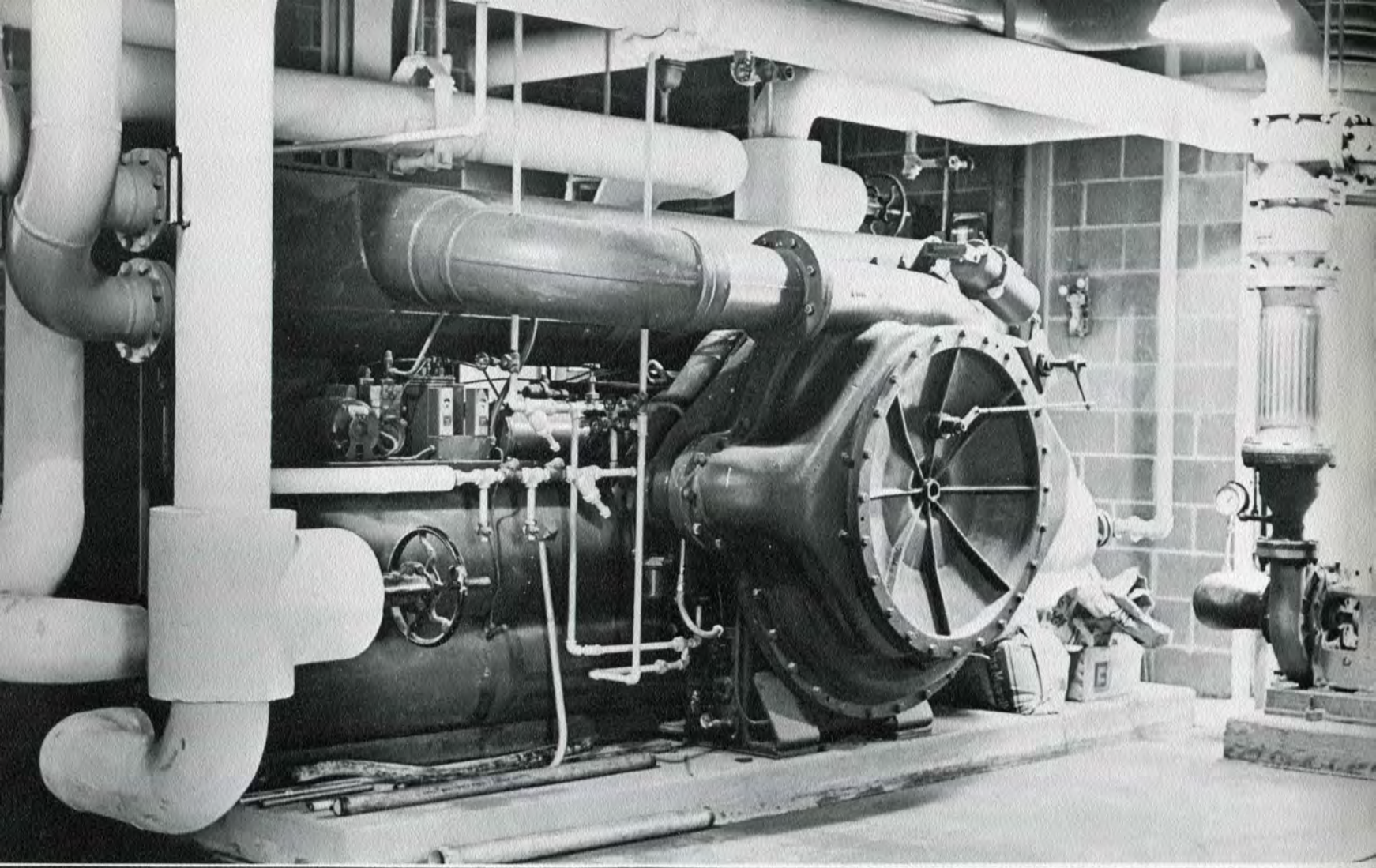
Success

To The Graduates

From

LAMINA INCORPORATED

BERKLEY, MICHIGAN



ZENI AND MAGUIRE CO.

30850 Industrial Road

Livonia, Mich. 48150

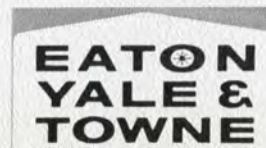
(313) 261-3200



Eaton Yale & Towne Products Bearing These Trademarks
GO TO MARKET IN MANY WAYS

The diversity of Eaton Yale & Towne's domestic and world-wide distribution methods fully matches the diversity of its product lines. Today — over 37,000 employees in 87 plants manufacture and market more than 3,000 highly engineered products throughout the world. □ Customers know that the practical application of advanced technology is what Eaton Yale & Towne engineers

do best. Special emphasis is given to the dynamics of control systems, transportation, materials movement, security systems, metallurgy, construction, and to products for your comfort, convenience and safety. □ For more about Eaton Yale & Towne, write today for our 28-page book, "PANORAMA."





In all that man is, he is good
and in all that he tries,
when it comes from the heart,
is also.

For he was born onto the world
and the world is his home.

Just as the sand journies
through the apex of an hour-glass
so journey we -- from the Ivy Halls



"Will you age this well?"

CONGRATULATIONS TO CLASS OF '68

THE YEARBOOK STAFF

MIDWEST YEARBOOK COMPANY
P.O. BOX 307
BIRMINGHAM, MICHIGAN