

1951

BOOK



L-BOOK

1951



GOING TO COLLEGE; THE RESULT...

Today's freshman, upon entering college, has been indoctrinated with the importance of task consciousness in a world torn by strife and political dissensions. He came to college imbued with an idea of the seriousness of his place in the world. Frequently, this indoctrination causes him to lose sight of the fact that education has a two-fold purpose in life: 1—subject

learning, and 2—social adjustment.

We, the graduating class of 1951, have found that these two features of college life must be harmoniously pursued so that in gaining the status of a professional ranking, we can reflect the ideals placed by the world on the professional man. This we feel has been accomplished. It is true that

at times we slipped and did not see "the forest for the trees," but now we can look back with pride, secure in the sense of accomplishment at our commencement.

For most of us, professional life is beginning. We must maintain the standards that society has placed on our diploma. We are ready.



Professor George Martin—With deep appreciation for his unfailing aid and understanding, we dedicate this book.

L-BOOK

1951

CONTENTS

Scenes	4- 7
Tech News	8- 9
Registrations	10-11
Frosh Initiation	14-15
Fencing	17
Basketball	20-37
Tennis	38
Administration	39-41
Dept. Heads	42-43
Faculty	44-46
Student Council	47
Founder's Day	48-50
Senior Class	51
Senior Stag	81-82
Interfraternity Council	83-84
Alpha Gamma Upsilon	85-86
Kappa Sigma Kappa	87-90
Phi Kappa Upsilon	91-93
Rho Delta Phi	94-95
Advertisements	96-114
Autographs	115-116



Professor Carl M. Einhorn, faculty sponsor of the L-Book and the Tech News.



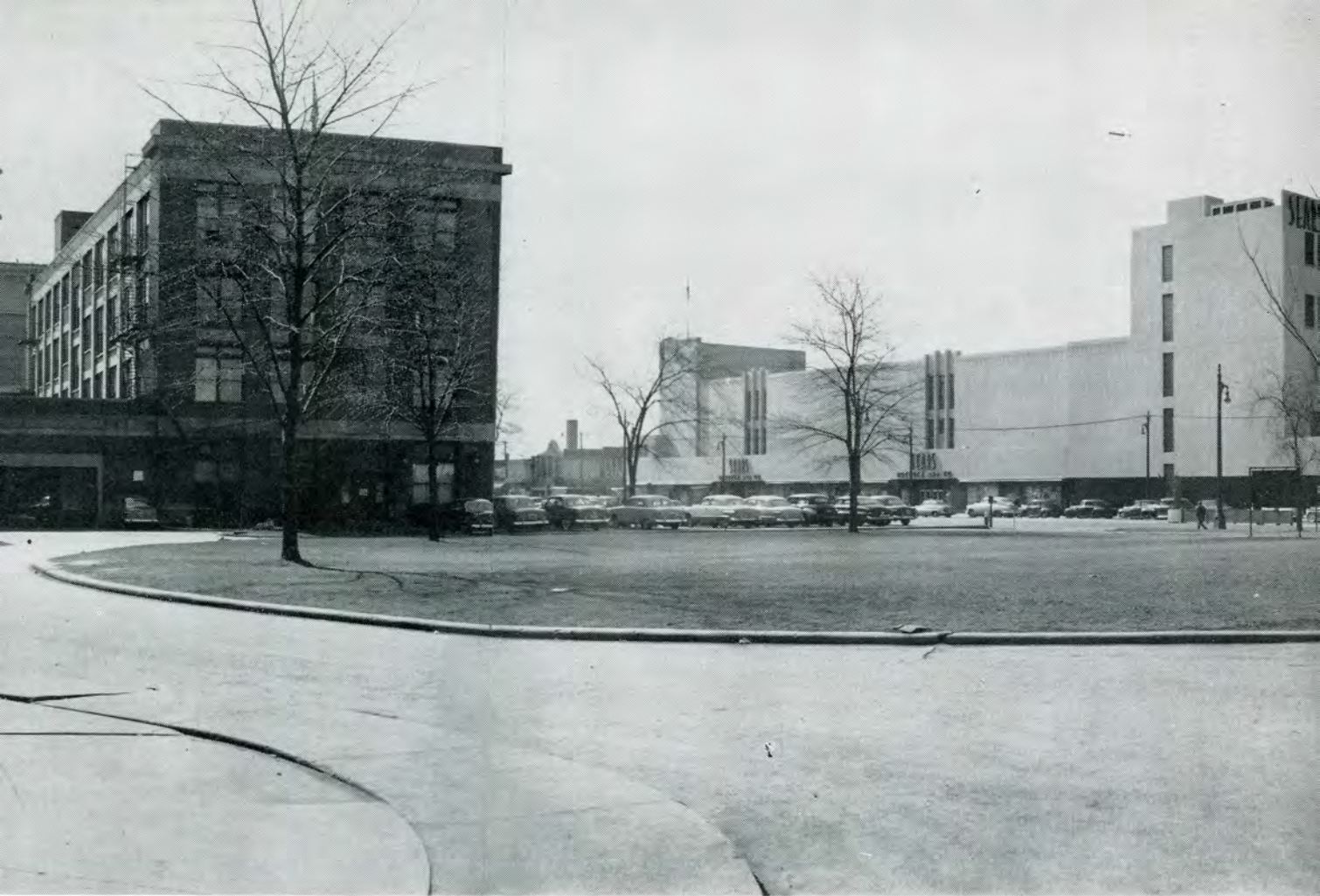
Associate Editor Skip Drane, Editor Wally Croll, and Associate Editor Jim Saunders of the 1951 L-Book staff.

1951

L-BOOK'S COVER

This year's L-Book cover was designed by Skip Drane.









After the weekend comes Monday.



Tanking up for the next class.



Deep in the study of structures and palaces.



What's new?



Lost in thought.



A COMPLETE LINE of materials may be found at the Bookstore.

THE LIBRARY IS showing signs of improvement every



TECH



Helping the linotypist prepare the Tech News.



This page is finished.



Another issue finished.



Editor Marcum, Lee Cromwell, Leo Berlin and Chuck Gibson pasting the next issue.



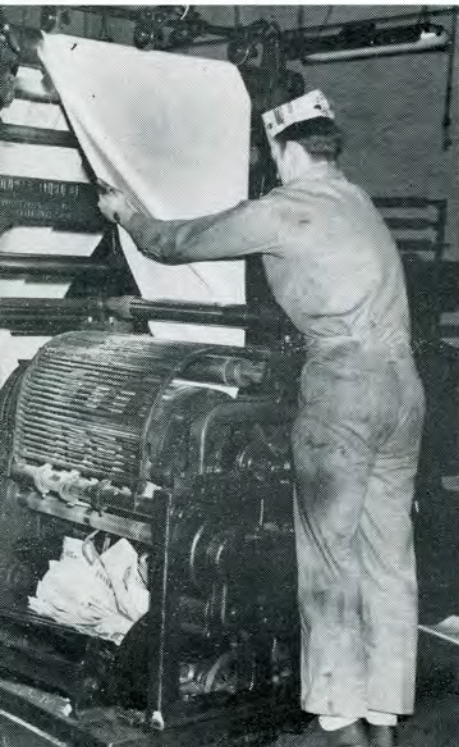
NEWS



It'll look like this.



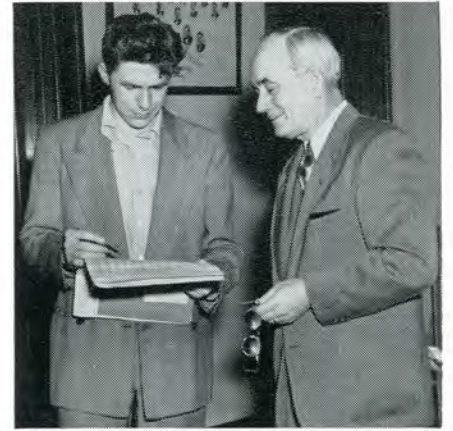
The presses roll.



Let's let everybody see



HERE IS WHERE you receive your I.B.M. registration cards.



REGISTRATION

With the introduction of the new and modern International Business Machine methods of student registration speed and accuracy of class scheduling are foremost. Put into operation by Mr. Hobson and his assistants the students now pick up cards for each class they wish to enroll.

After choosing their schedule from the Registration Issue of the TECH NEWS and proceeding through the card table the students then are interviewed by members of the faculty who check and double check their programs and pre-requisites. In this way the sections are filled with a predetermined number.

The cards when processed by the I.B.M. equipment provide the professor with a complete list of students for each class that he is teaching.

The long wait for the report cards at the end of each term is no longer a months wait but is reduced in time to that of only two days from the time the faculty turn in their grades to the registrar.



THE FACULTY ASSISTS the student with his class scheduling.





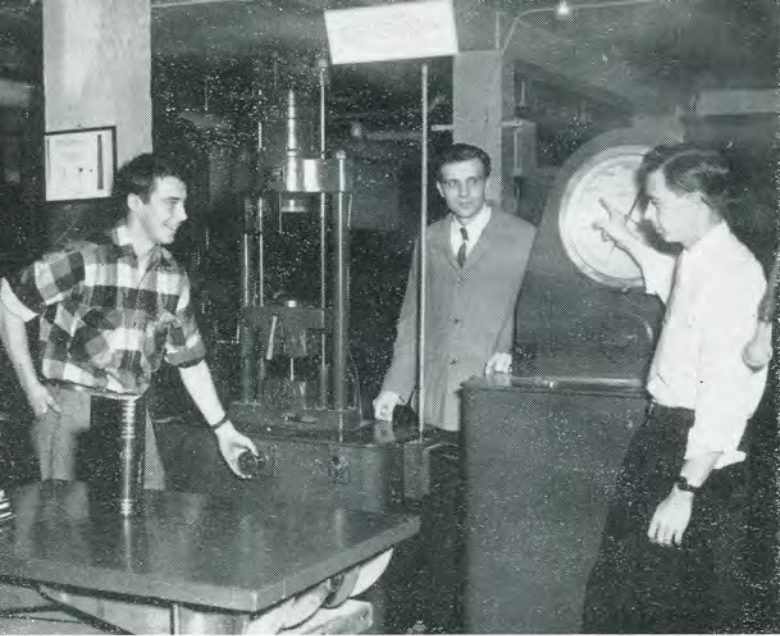
Each student now has a Student Number. The number is what must be correct on all correspondence pertinent to his registration and credits.

The study hall is turned into a processing department during registration period with designated sections for each engineering major and level of work.



And last but not least here is where your money goes. Mrs. Rogers and Mrs. Lucik are always happy to accept a payment in full or partial payment for your future education.

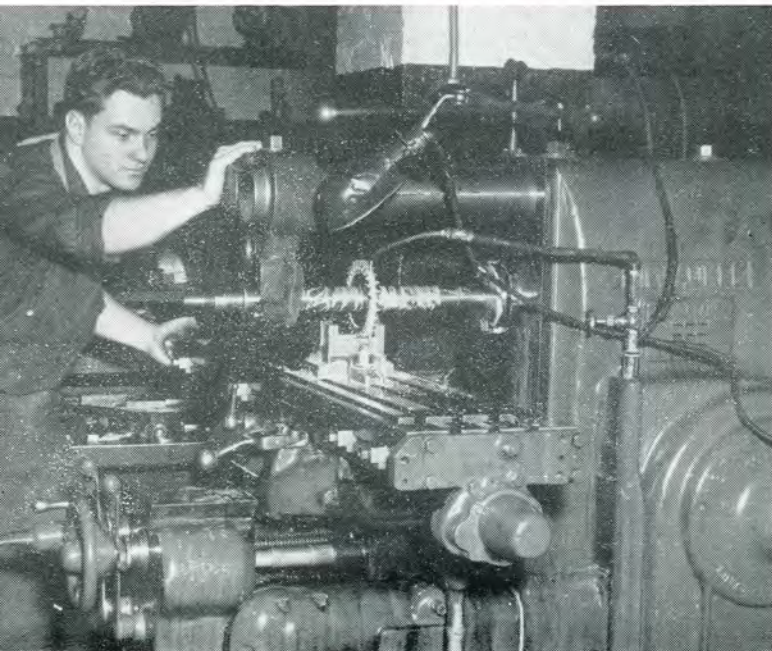
CLASSES and GROUPS



The juniors performed strength of material experiments under the helpful eye of Mr. Sierant.



The "bathtub" in the fluids lab looked rather crowded.



Sophomores learned the true meaning of "Theory and Practice."



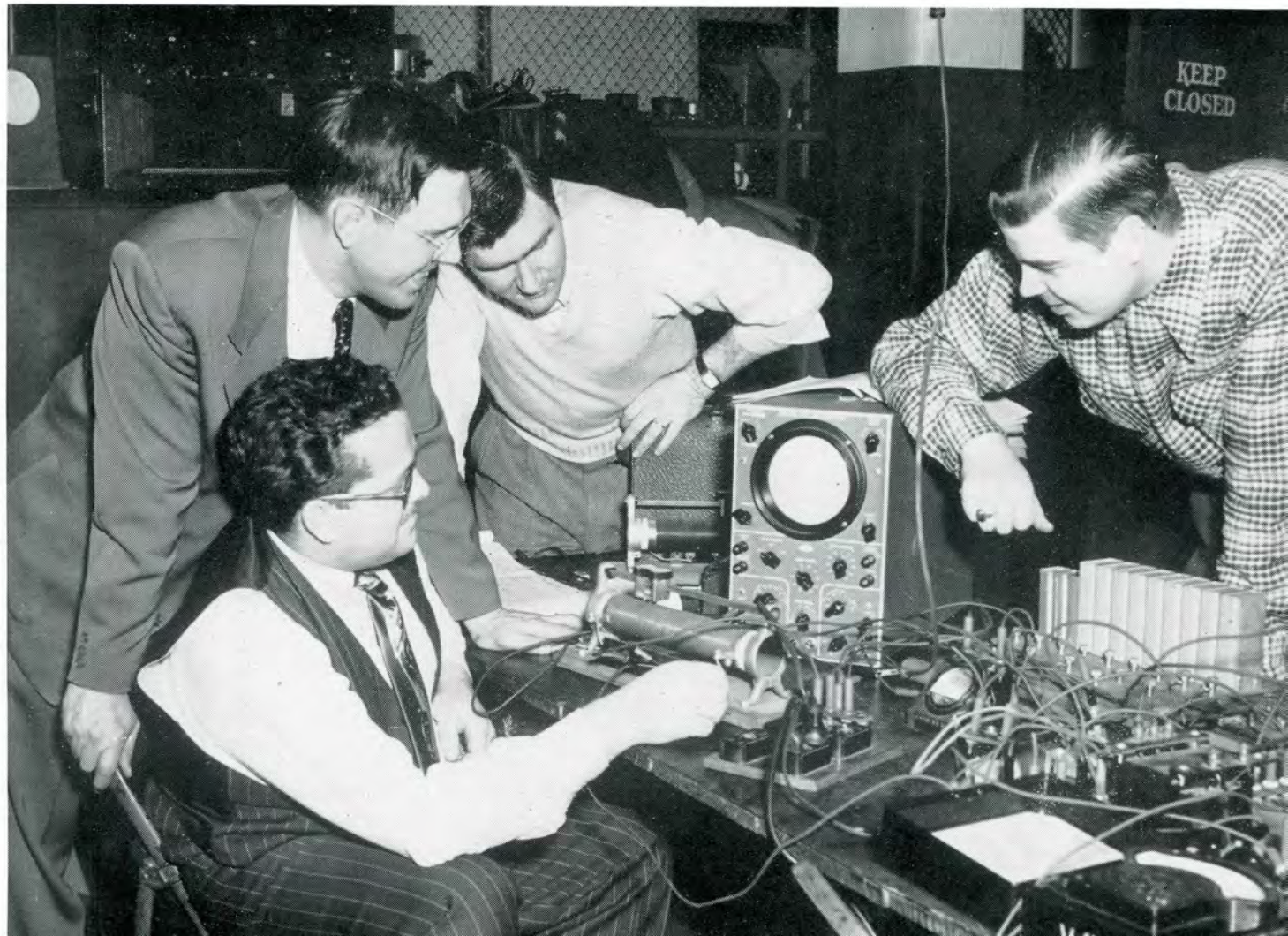
The Society of Automotive Engineers was represented by the above group of officers.



A series of technical lectures was presented by the S.A.E.



The architectural design class was conducted by Mr. Wright. The EE's were always found with a maze of circuits and swi





“FROSH INITIATION”

To the new freshmen entering college, the day is filled with golden opportunities. The opportunity of attending classes and gaining knowledge that he never knew existed. A large part of “going to college” is the attitude that the new student has towards the activities which are provided for him by the more initiated students of Lawrence Tech.

Once each year the Sophomore class members provide the Freshmen with a chance to be of service to every student in the college. During Freshmen Initiation Week, or better known as “hell week”, the freshie is directed to do certain acts which must measure up to the requirements of the upper classmen.

If the frosh takes the attitude of not caring he is sure to end up as one of those students who carries with him only a degree in his respective engineering major. But if the new student can take the experiences of initiation and pledging a fraternity with a sense of humor he has gained much in the knowledge of getting along with his fellow men.

In any event there is more to “going to college” than attending classes and religiously doing homework. A large part of “going to college” is getting a well rounded education in human nature.

Of course all this extra-curricular fun is taken in good stead and usually turns out for the best if not slightly well worn.



Emerging victorious from the Freshman Class elections were President George Hayter, Secretary-Treasurer Tom Worden, and Vice President Dick Neigebauer.



Sophomore President Jerry Roll "seized up" two helpless Frosh for the full treatment.



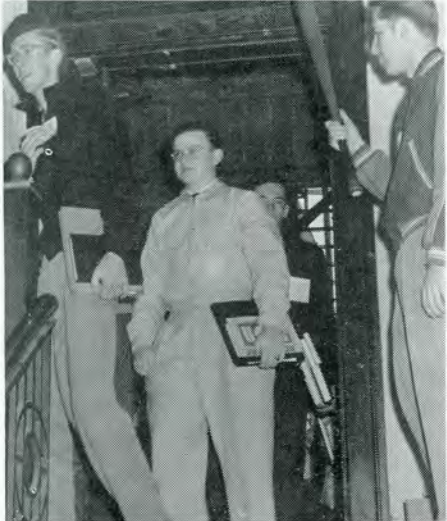
The day of reckoning arrived for the Frosh who didn't take the initiation seriously.



A special Kangaroo Court was held for every Frosh who failed to cooperate fully during the initiation.



The "Frosh Choir" was given an opportunity to present their rendition of "Dear Old L.I.T."



No reprieve was given the Frosh as they changed classes.



Each Freshman purchased a beanie after a convincing sales talk by the Sophomores.



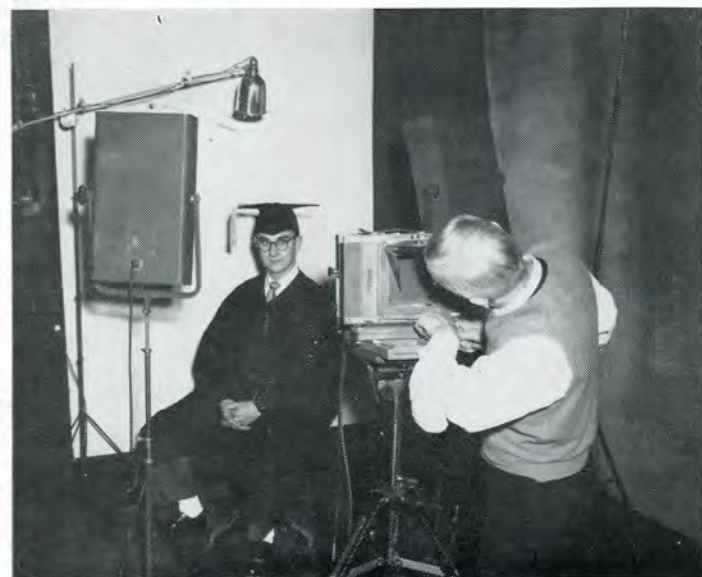
The proper attitude was displayed by two of the "victims".



Pictured above are the Square Club officers for the 1950-51 school year.



The Square Club's largest social function was the annual dinner dance.



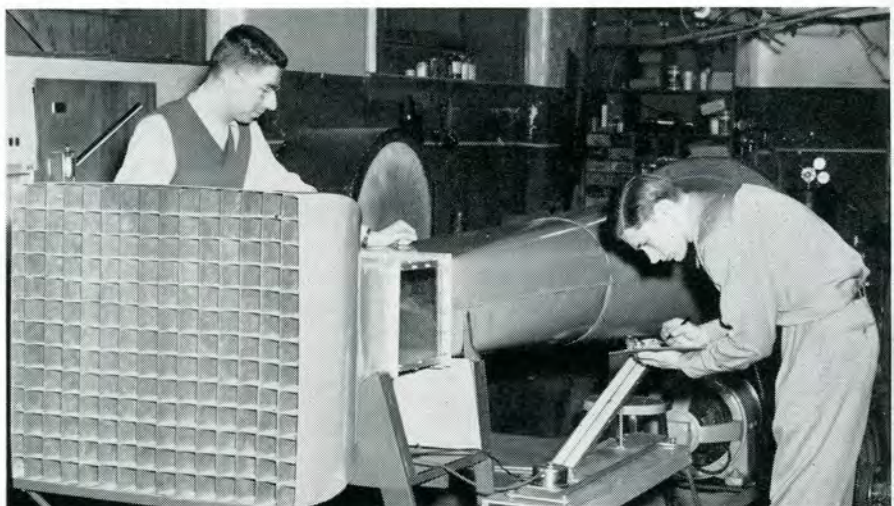
After waiting four years Lee Cromwell couldn't manage a smile.



Varsity Club Officers



The Institute of Aeronautical Sciences was represented by the above officers.



A new addition to the aero lab was the wind tunnel.



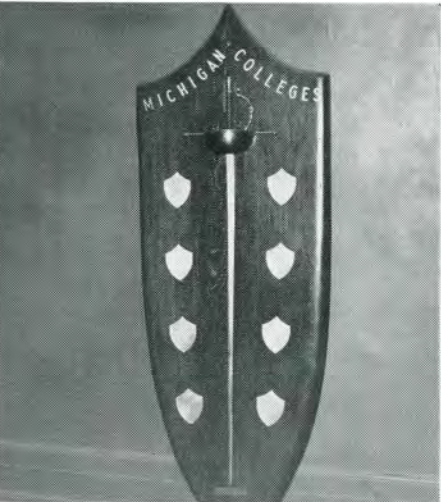
Coach James Campoli is actively participating in amateur fencing in addition to his efforts with the Tech team. He ranked near the top in the trials for this year's Pan American Games.



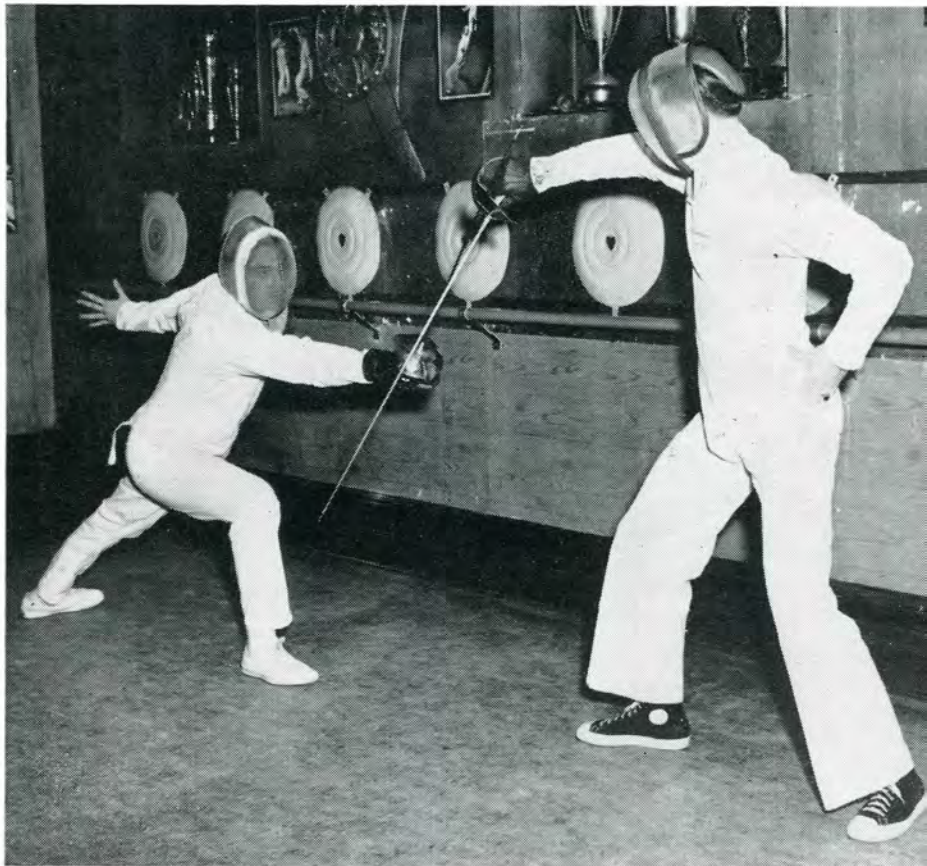
The members of this year's fencing team are Leon Yulkowski, Dick Grey, Paul Salazer, Dick Sharp, Jim Lepley, Jim Donahue and Howard Lang.

FENCING

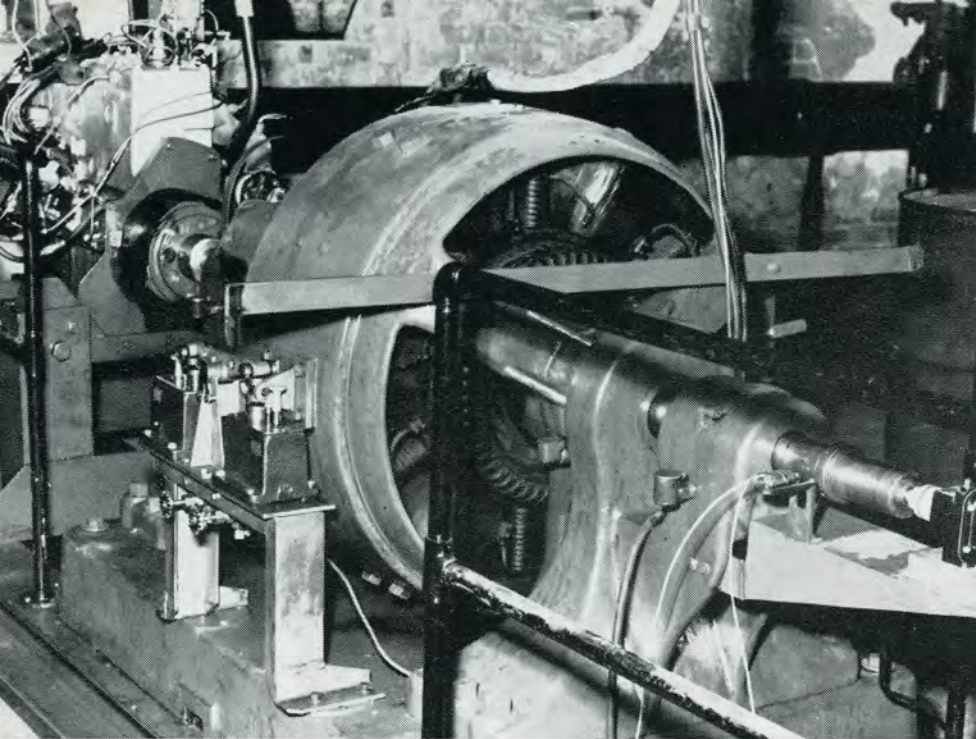
The L.I.T. fencing team has completed a successful season with five victories and three defeats. This year's newcomers who secured a position are Dick Grey, Jim Lepley, and Howard Lang. In addition to the regular collegiate schedule several team members have participated in Regional and National Inter-Collegiate Tournaments.



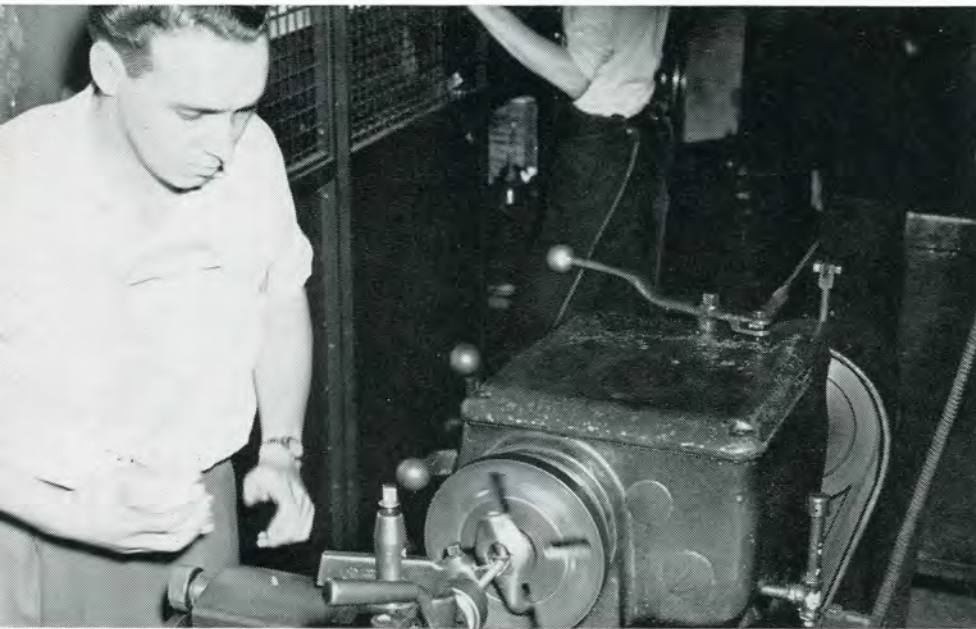
The Michigan Inter-Collegiate Fencing Championship Trophy was captured by the team in competition with U. of D., Wayne U., and other Michigan colleges.



Dick Sharp parries as Paul Salazar attempts a chest cut during practice at Bela de Tuscon.



The engine looks like this.



We find out how to use it.



The smiling faces of the Junior politicians: Tom Limperis, Bob Alfater, Chuck Henry, and John Calvert.



ACS leaders: Chuck Henry, Stan Kukawa, Moves Movsesian, and Dale Boyd.



Soph prexy Jerry Roll and Secretary.

CLASSES and GROUPS

To make college life of real value, learning must be achieved in the classrooms. But at Lawrence Tech, faculty and students know that college life begins, in many instances, in the halls, offices, and multiple outside activities that make these years the happiest in our lives.



THE MYSTERY OF trig identities were solved under the watchful eye of Mr. Bray.

LEARNING THAT THE draftsman's most important tool the eraser proves quite a task.





WALT BAZYLEWICZ
Assistant Coach



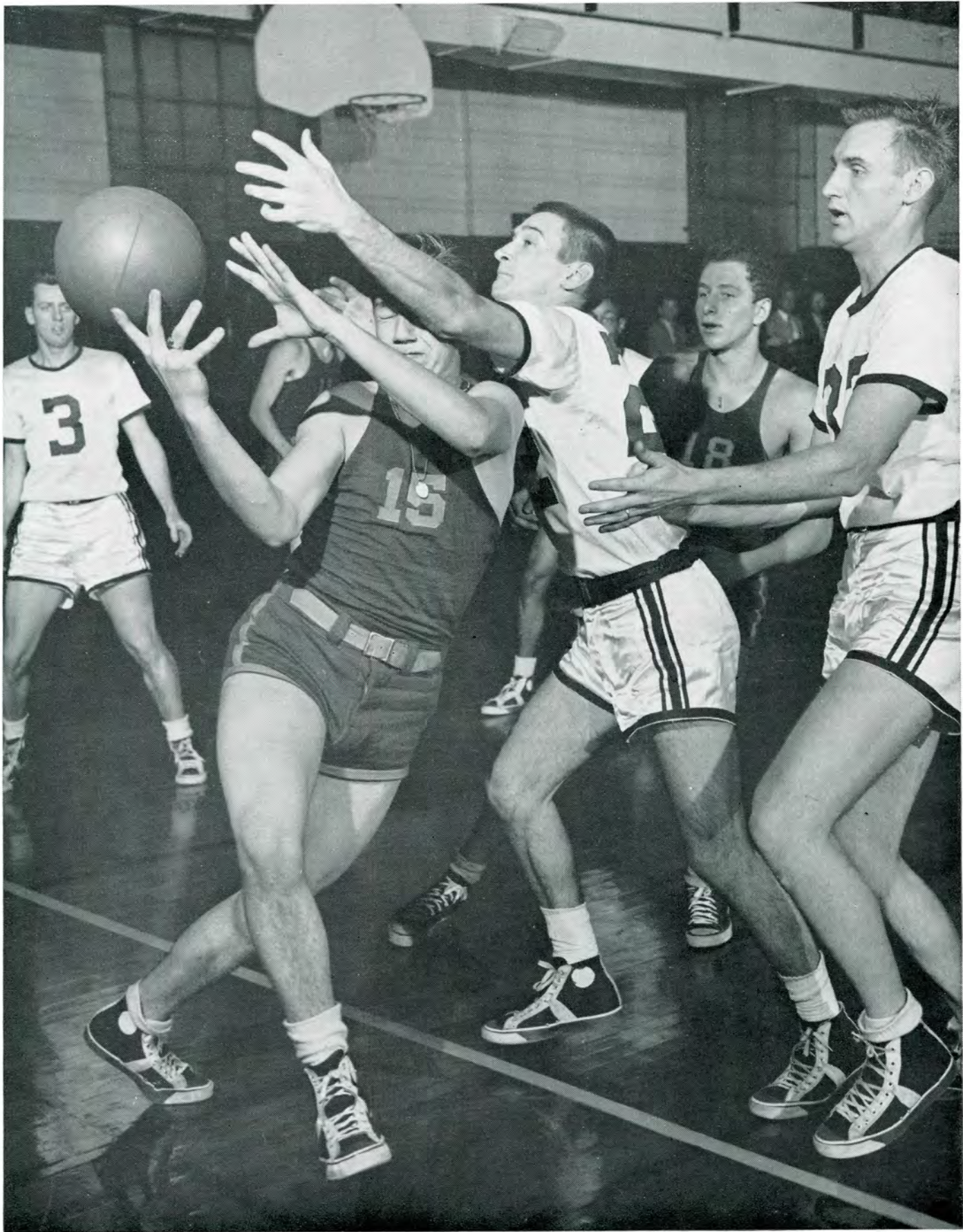
DON RIDLER
Athletic Director and Head Coach

BASKETBALL

1951 proved the predictions of many sportswriters who said that L.I.T. is one of the top basketball powers in the nation. Led by Don Ridler, rotund Athletic Director and Head Coach, the "Blue Devils" took of their games and wound up in the National Invitation Tournament at Madison Square Garden in New York. The following pages show the tense moments in several of the big games and the relaxed jubilation of the victory parties and dances after them.



CARL CAMPBELL
Freshman Basketball Coach



FRESHMAN TEAM

First Row, L. to R.—George Woods, Art Jonhowski, Frank Occovetti, Richard Boomer, Stud. Mgr., Bob Wulbrechth, Robert Loch, Zelma Hines
 Second Row, L. to R.—Frank Anzeto, Joe Auer, Ben Zabowski, Carl Campbell, Coach Warner Kellan, Carl Schulte



First Row, L. to R.—Roger Adams, Roy Schrieber, George Adams, Herman, Pett, Sam Smith, Ray Mawhorter
 Second Row, L. to R.—Gene Khoury, Blaine Denning, Barney Petty, Bill Wagner, Ken Burrell, Ray Chojnowski
 Third Row, L. to R.—Richard Boomer, Stud. Mgr., Walt Bazylewicz, Coach, Ralph Okie, Lee Houtteman, Jim Stepler, Bob McManamy, Don Ridler, Coach, Charles McCarthy

VARSITY TEAM





Again this year Coach Don Ridler presented well known dance bands to augment the basketball program at the Coliseum.



The Homecoming Game with the University of Delaware was snowed out. When played the score was L.I.T. 62, U. of D. 58.



Some fans couldn't see the game.

But a lot came anyway.



Denning's going in—It's in the bag.

Let's do it again.







Providing the music.

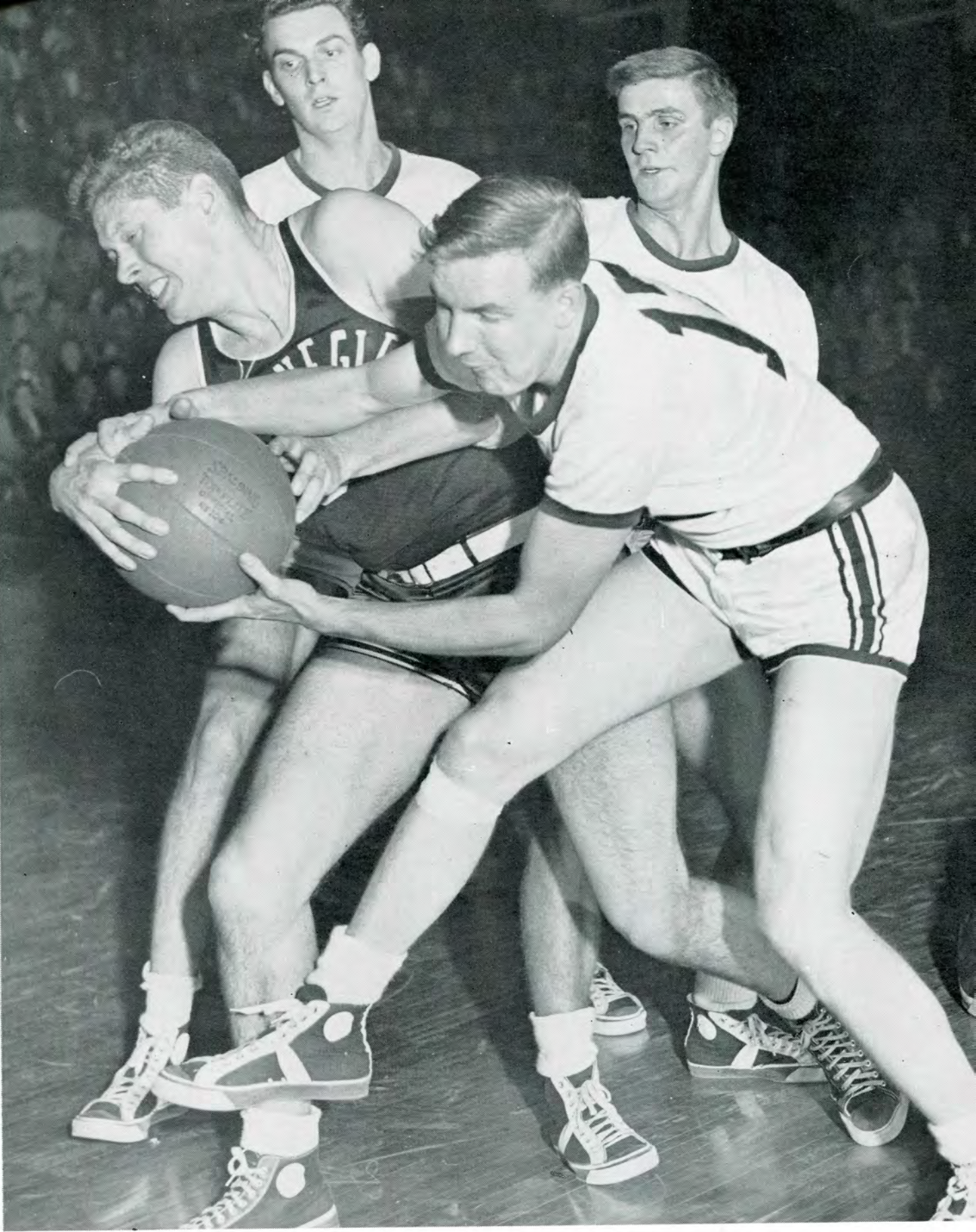
ARCH CLUB DANCE



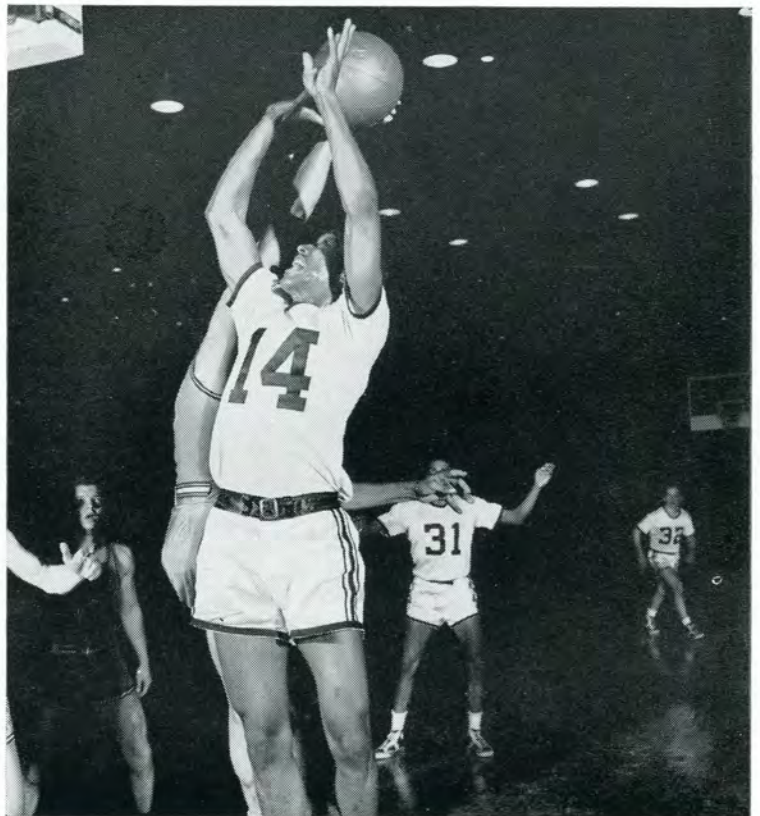
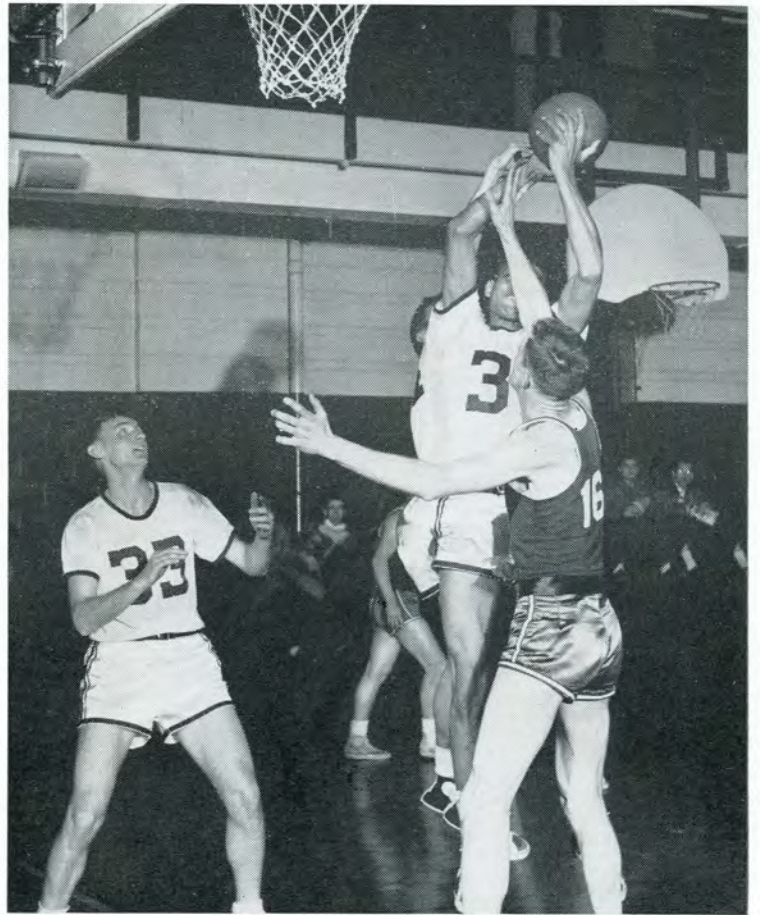
They worked to make it a success.

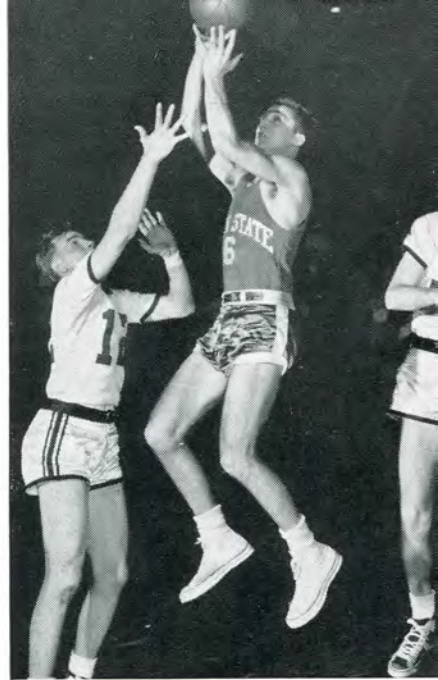
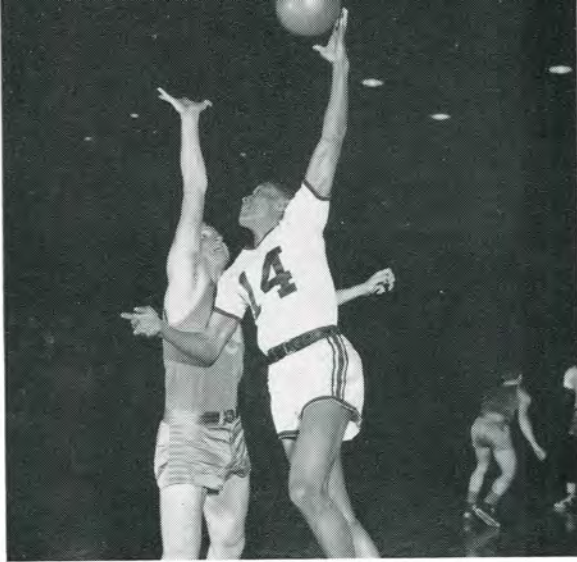


And everyone had a good time.



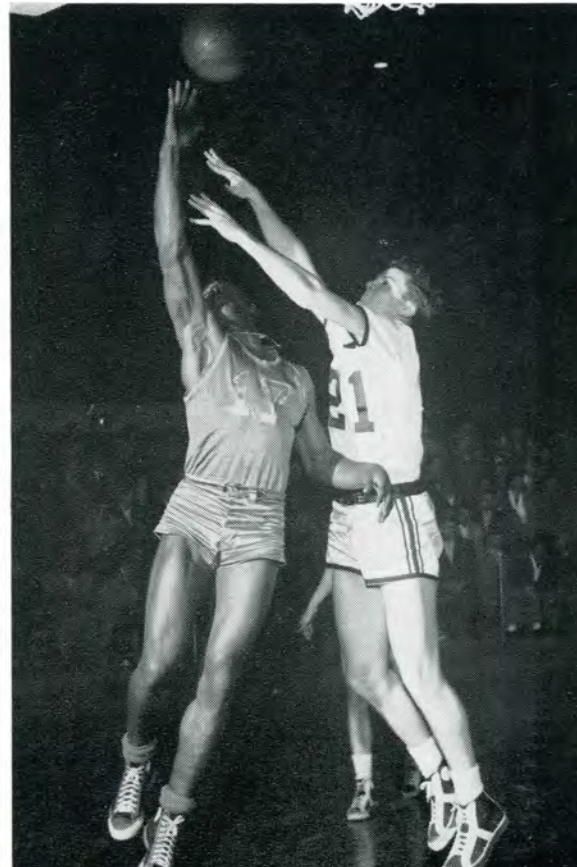
BASKETBALL Cont'd



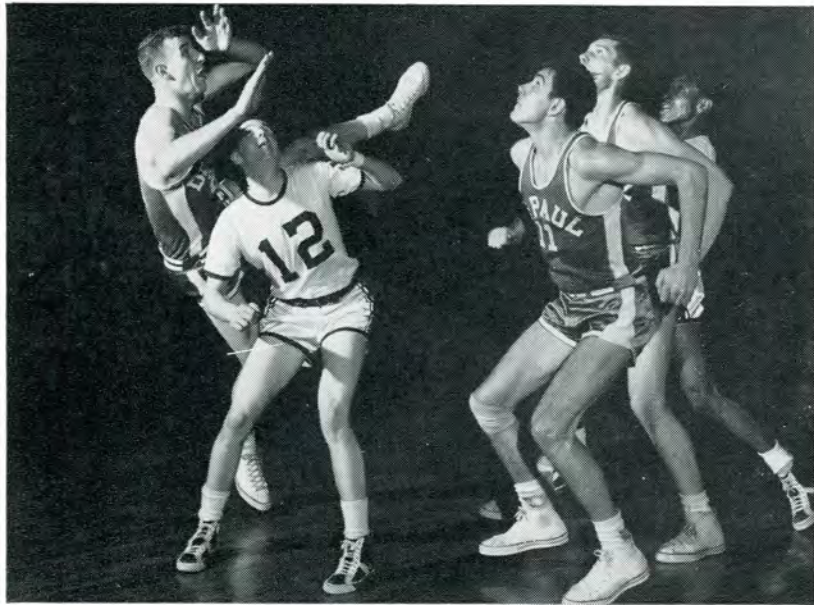


SCORES

Lawrence Tech	71	Selfridge Field	48
Lawrence Tech	83	Arkansas State	71
Lawrence Tech	84	Tiffin	55
Lawrence Tech	52	Colorado State	42
Lawrence Tech	87	Mississippi College	45
Lawrence Tech	67	Penn State	56
Lawrence Tech	88	John Carroll	66
Lawrence Tech	68	South Dakota	56



BASKETBALL Cont'd



SCORES

Lawrence Tech	65	DePaul University	63
Lawrence Tech	74	Creighton	59





Lawrence Tech	60	Bowling Green	54
Lawrence Tech	80	Vermont	61
Lawrence Tech	81	Western Ontario	67

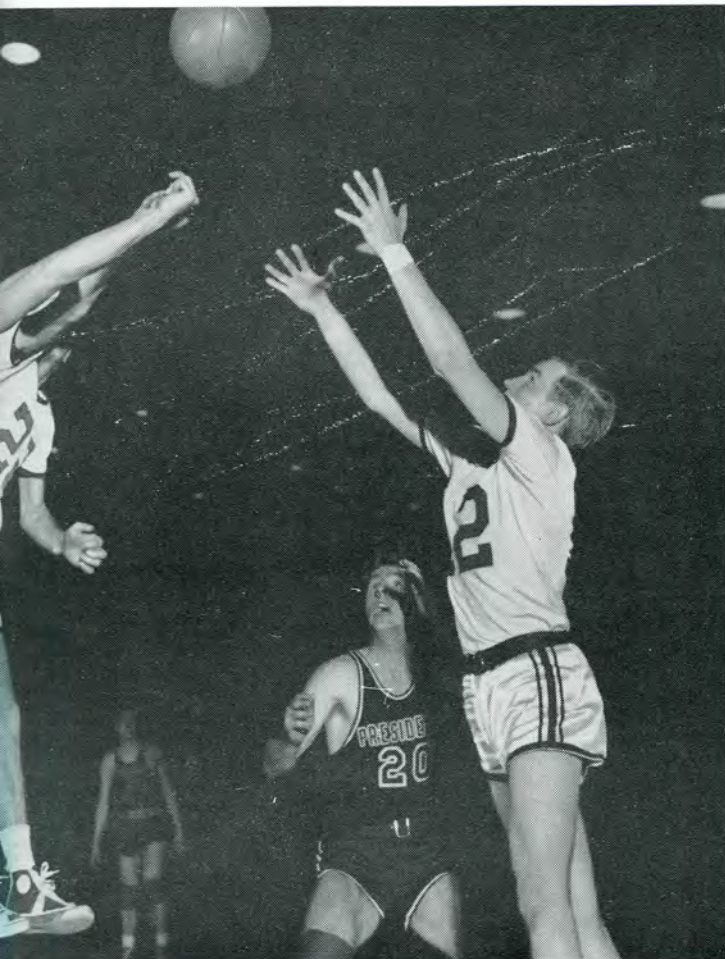


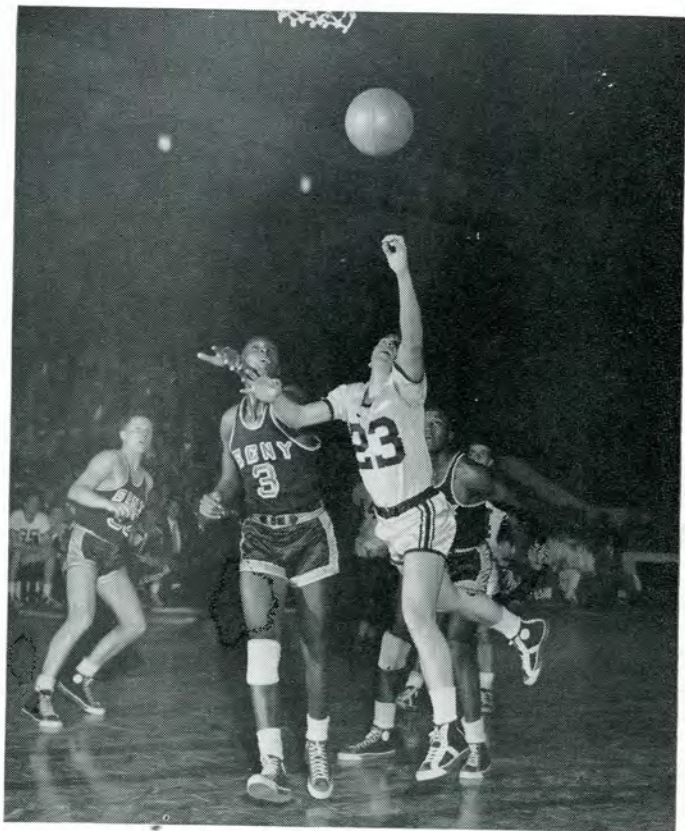
Lawrence Tech	65	Washington & Jefferson
Lawrence Tech	79	Selfridge Field
Lawrence Tech	78	Toronto University

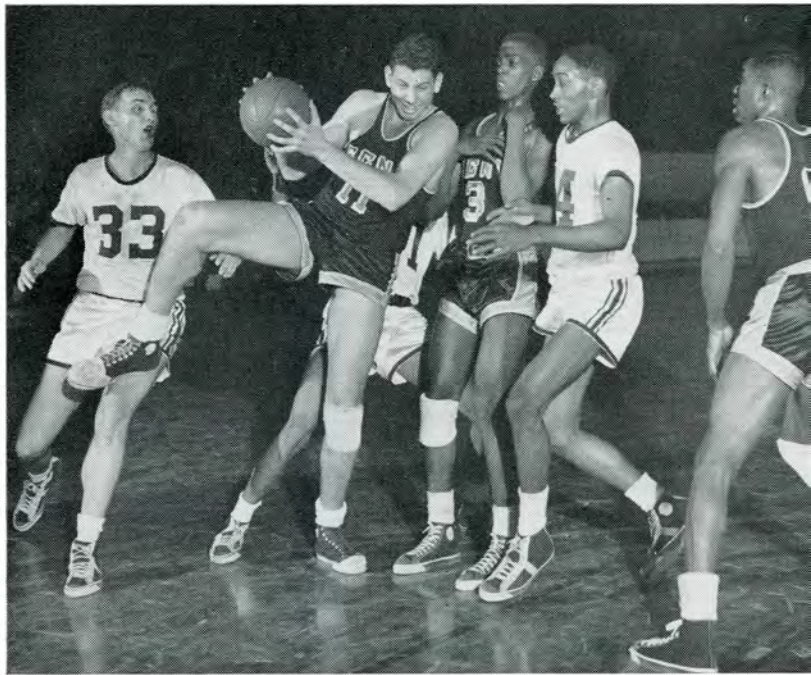
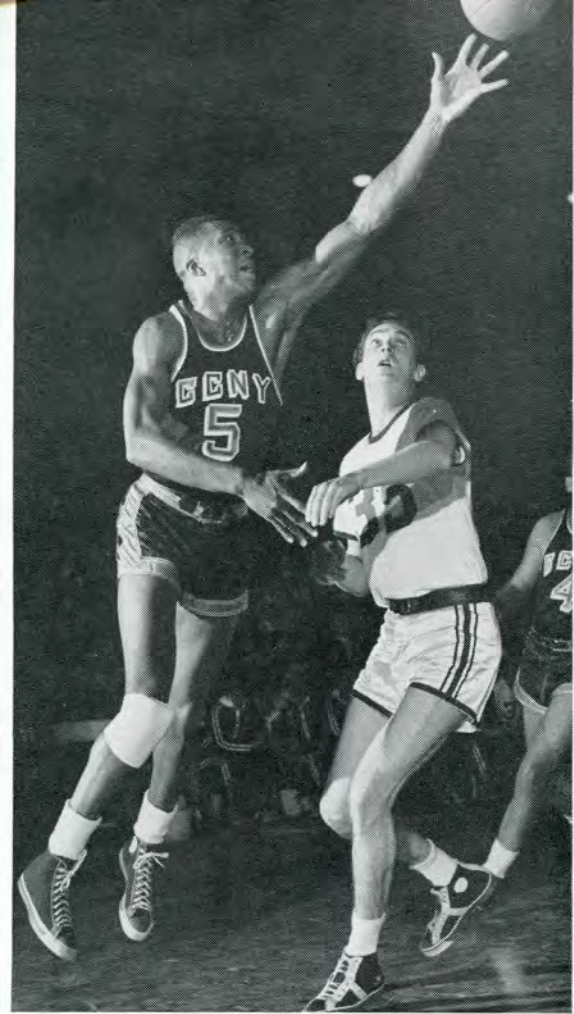




Lawrence Tech	69	Niagara University	53
Lawrence Tech	111	Tiffin	74
Lawrence Tech	83	McMasters University	73

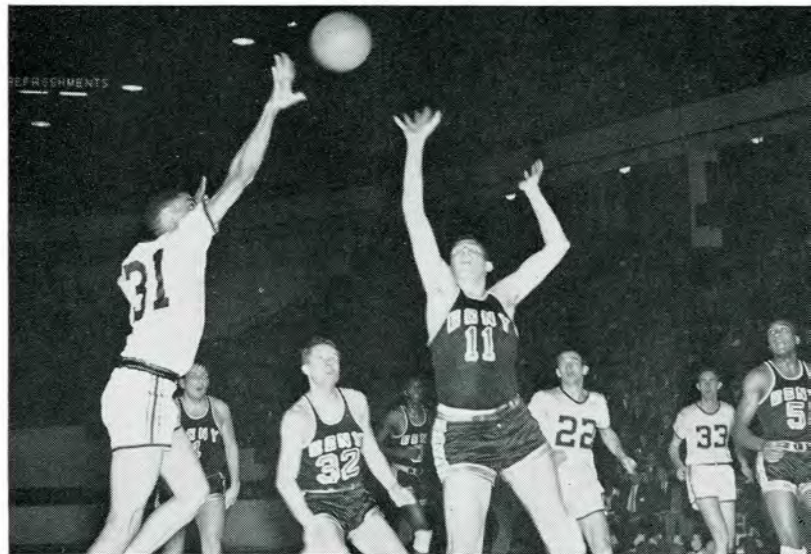






LAWRENCE v.s. C.C.N.Y.

Lawrence Tech 66 C.C.N.Y. 68



L.I.T. to N.I.T.





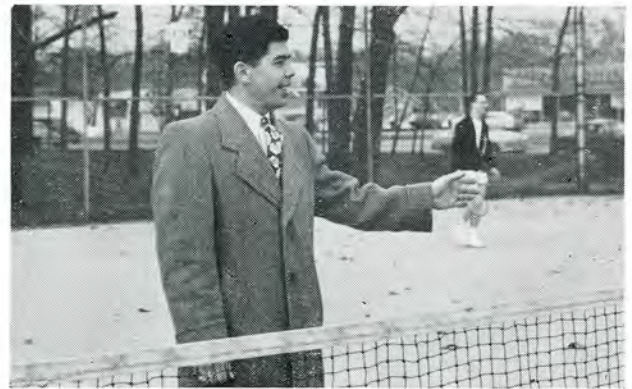
TENNIS



This year's tennis team includes Marv Smith, Lee Cromwell, Don Brehmer, John Dean, John Grinrod, Carlo Corte, Ed Larson, John Swiecicki, Don Ryder, and Coach Ralph Emig.



John Swiecicki tries a bankhand and it looks like strike one.



Coach Emig directs the team during a practice session at Palmer Park.

SCORES

L.I.T.	4	CALVIN	3	(Home)
L.I.T.	1	HILLSDALE	6	(Home)
L.I.T.	0	TOLEDO U.	7	(Home)
L.I.T.	4	NIAGARA U.	5	(There)
L.I.T.	0	BOWLING GREEN U.	7	(There)
L.I.T.	1	CALVIN	6	(There)
L.I.T.	4	HILLSDALE	3	(There)



Marv Smith perfects his cannonball.



PRESIDENT E. GEORGE LAWRENCE



MISS GENEVIEVE DOOLEY, Registrar



JAMES HOBSON, President's Aide

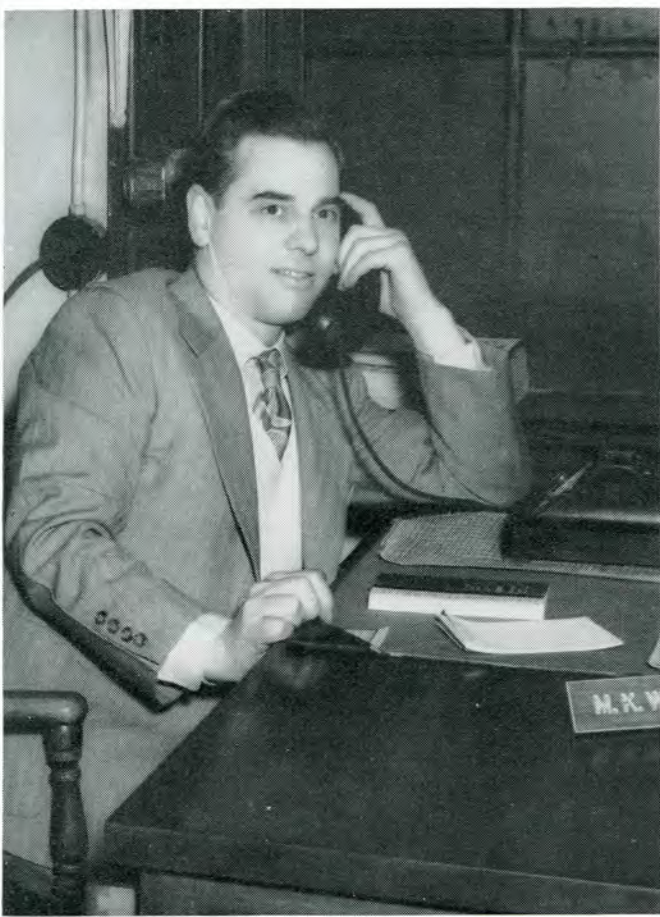
ADMINISTRATION

One of the advantages gained in attending a smaller college is the close association that is developed between the student and the administration. Here at Lawrence Tech we are especially proud of our record in this field.

President Lawrence has extended his open door policy throughout the college and the student knows that his problems, whether personal or not, will be handled with care and understanding. We, of the graduating class, have made many lasting friendships with the administration and feel that this association has furthered our education appreciatively.



GEORGE A. HENDRICKSON, Dean of Engineering



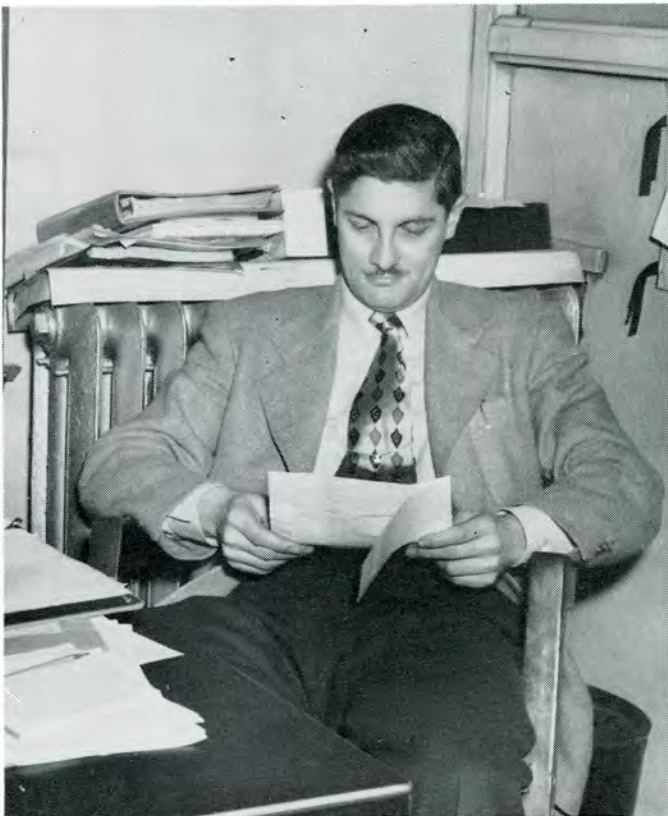
MURRIEL WOOLFORD, Student Guidance



HAROLD VanBUSSUM, Purchasing Agent



BRUCE LYON, Bookstore Manager



WILLIAM BURKE, Employment Director



NICKOLI TERBOJEVICH, Administrative Aide



PROFESSOR GERALD P. CONNELL
Chemical Engineering



PROFESSOR HANS G. ERNEMAN
Mechanical Engineering



PROFESSOR GEORGE P. MARTIN
Aeronautical Engineering

DEPARTMENT HEADS



PROFESSOR WILLIAM E. MENZEL
Civil Engineering



PROFESSOR LEONARD E. FISCHER
Electrical Engineering



PROFESSOR LLOYD C. BAGBY
Industrial Engineering and Mathematics



PROFESSOR EARL W. PELLERIN
Architectural Engineering



DR. EDWIN O. GRAEFFE
Social Science



PROFESSOR JOHN S. RACKWAY
Engineering Drawing



PROFESSOR MORDICA M. RYAN
Chemistry



DR. GAIL P. BREWINGTON
Physics



PROFESSOR HERBERT G. WILLIAMS
English

FACULTY



George G. Allison
Mechanical Drawing



Irving Appleblaff
Mechanical Eng.



Kenneth J. Baune
Civil Eng.



Harold C. Boothroyd
Chemistry



Theran H. Bray
Mathematics



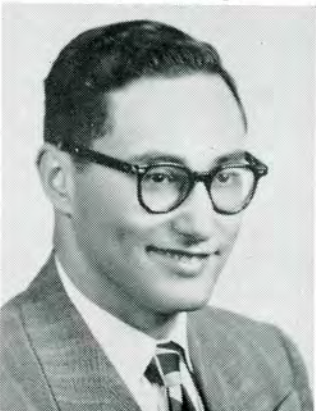
Edmund J. Dombrowski
Industrial Eng.



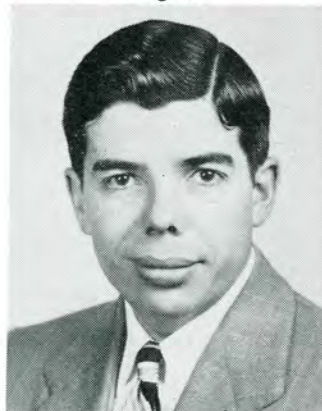
Emmet J. Donnelly
English



William F. S. Dowlding
Industrial Eng.



Carl M. Einhorn
English



Ralph C. Emig
Mathematics



John R. Fawcett
Mathematics

FACULTY



Robert H. Garmezy
Electrical Eng.



Burton S. Garrell
Mechanical Eng.



George W. Gibson
Electrical Eng.



Charles F. Gottschalk
Industrial Eng.



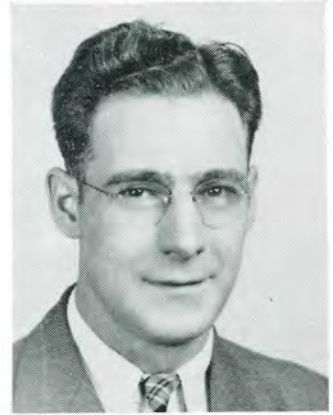
Edwin Haire
Mathematics



Arthur D. Hart
Electrical Eng.



James B. Hughes
Architecture



G. Harvey Knipple
Chemistry



Irving J. Levinson
Mechanical Eng.



William Mann
Mechanical Eng.



James S. McCoy
Mechanical Eng.

FACULTY



Henry W. Nace
Mathematics



Cleo H. Neveu
Chemistry



Lloyd L. Paulson
Bus. Adm.



Theodore W. Ponrte
Physics



Robert Shirley
Bus. Adm.



George W. Sierant
Eng. Drawina



Jose M. Torres
Mechanical Eng.



James L. Van Vliet
Physics



Donald R. Warnick
Electrical Eng.



Robert W. Wright
Industrial Eng.



Hurst E. J. Wulf
Mathematics

STUDENT COUNCIL

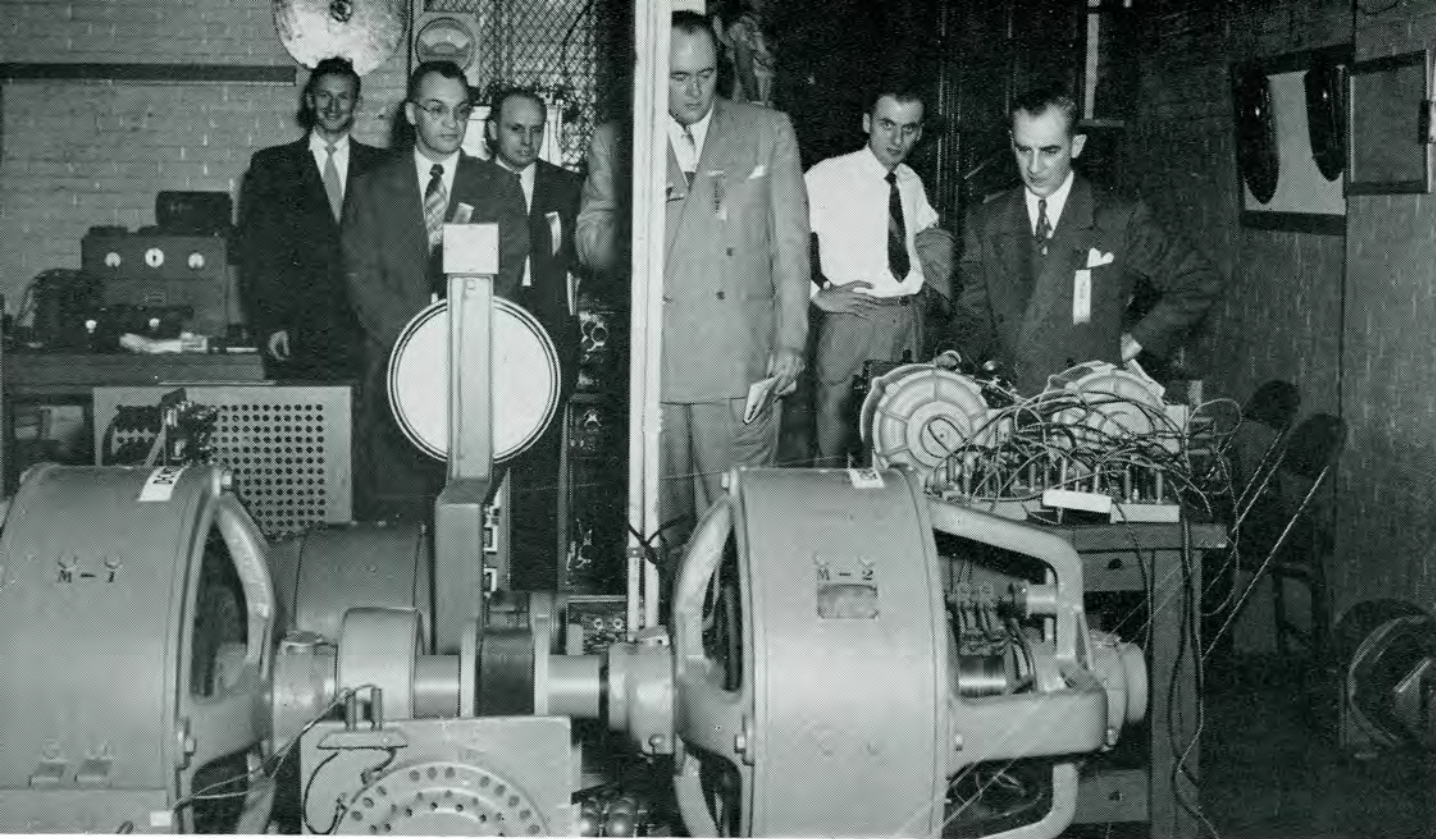


JUDICIAL CHAIRMAN LOU Alward clears up a legal point for the Student Council.



THE STUDENT COUNCIL officers are: Judicial Chairman Alward, President John Lauer, Treasurer Carlo Corte, Faculty Adviser Mr. Woolford, and Secretary Skip Drane.





The Phi Kappa Upsilon's exhibit "Science For Peace" won first prize in the organizational competition.

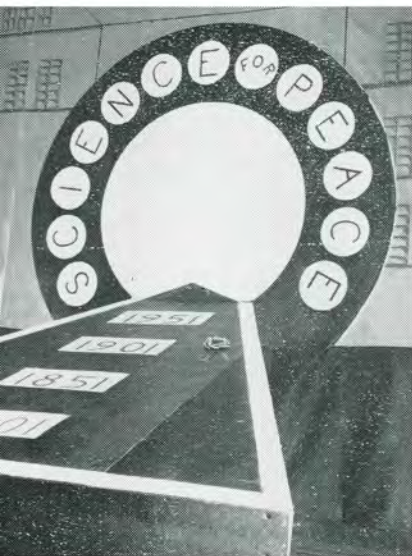
The judging committee inspects the Electrical Department's exhibit.

Each year a few days are set aside in memory of Dean Russell E. Lawrence, who founded Lawrence Tech in the lean days of 1932. His foresight is held in evidence at this time by men who, since graduation, have become leaders in industry throughout the nation.

Exhibits, set up on a competitive basis by departments, classes,

FOUNDERS DAY

Professor Erneman explains the Hansmobile to Dean Hendrickson and party.



The Phi Kappa's came through again in the "Rat Race".





The S.A.E. "hotrods" built a test track and raced their midjet jet cars.

clubs, and fraternities, were judged on Founder's Day. The departmental winner was the Industrial Engineering Department. Their exhibit consisted of plant layouts, safety displays, and an actual time and motion mechanism. In the organizational judging, the first place plaque was awarded to the Phi Kappa Upsilon Fraternity. The fraternity displayed a fully automatic slide projector which depicted the advancements made

since 1701 in housing, communication, lighting, and transportation. Another highlight of the celebration was the attendance of Governor G. Mennen Williams and other notables. The Governor was very impressed by the many fine exhibits and was completely absorbed in the technical nature of them. The Hansmobile seemed to arouse his interest and he asked Prof. Erneman to bring it up to Lansing upon completion.

An S.A.E. speedster prepares a trial run.



"The winner!"

The Architectural Club designed and built this ultra modern room for the judging.





Professor Lloyd Bagby of the Industrial Engineering Department receives first prize from Student Council President John Lauer.

The Physics Department's exhibit is explained to the Judges by Norbert Ratalsky.

The Board of Trustees and invited guests attended the annual Founder's Day Luncheon.



“L” Book



presents



Class of

'51

SENIOR CLASS



Day School Officers are Treasurer Edward Hamperian, Secretary Dick Cotter, Vice President Carlo Corte, President Clayton Baker.



Night School Officers are Vice President Bob Gould, Treasurer John S. Remski, President Earl Ogger, Secretary Oppertbauer.

CANDIDATES FOR DEGREES CONT'D

ABEND, Donald, B.S.E.E.

Double 'E' Club
S.A.E.

ALWARD, Lewis, B.S.B.A.

Judicial Chairman, S.C.
President Rifle and Pistol Club
Manager Rifle Team
Secretary Varsity Club



AMARANTIDES, John, B.S.Ar.E.

President Arch. Club
A.I.A. Member

ANATONICH, Peter, B.S.C.E.



ARMSTRONG, Jerry H., B.S.B.A.

ASADOURIAN, Michael, B.S.B.A.



BACKSTRAND, Henry, B.S.M.E.

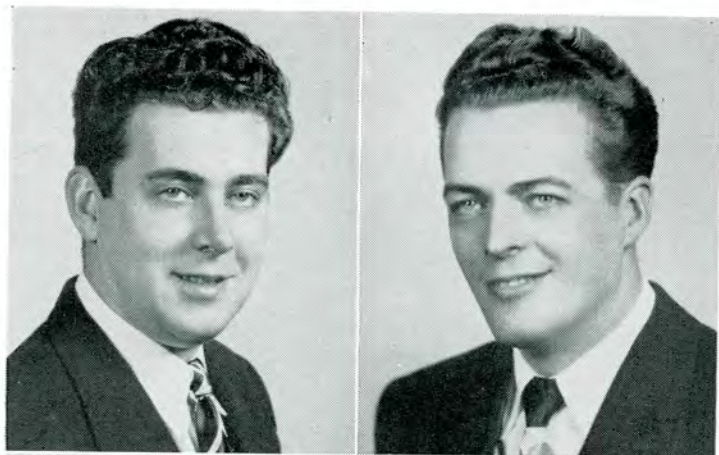
V-President, A.G.U.
J-Prom Committee
Camera Club
S.A.E.
S.A.M.

BADARAK, Kenneth M., B.S.B.A.

Manager Pistol Team
Varsity Club
S.A.M.



CANDIDATES FOR DEGREES CONT'D



BAK, Edwin, B.S.C.E.

BAKER, Clayton, B.S.I.E.

President Senior Class
Student Council Chairman
TECH NEWS Staff
Varsity Club
Rifle & Pistol Team
J-Prom Committee
V-President, S.A.M.

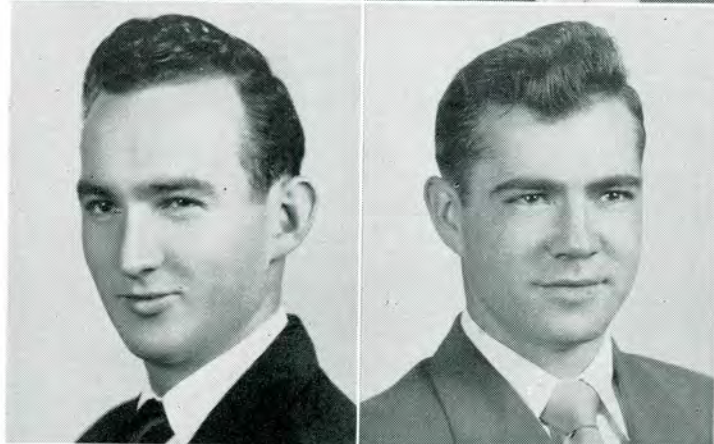


BARAN, Thaddeus, B.S.C.E.

Rho Delta Phi
Astronomy Club
S.C.E.

BARKLEY, Thomas, B.S.B.A.

S.A.E.
S.A.M.



BARNES, Joslyn T., B.S.C.E.

Chairman C.E.S.

BECKMAN, Joel Jr., B.S.E.E.

Chairman Employment Comm.
Double 'E' Club
S.A.E.



BELAVICH, John, B.S.B.A.

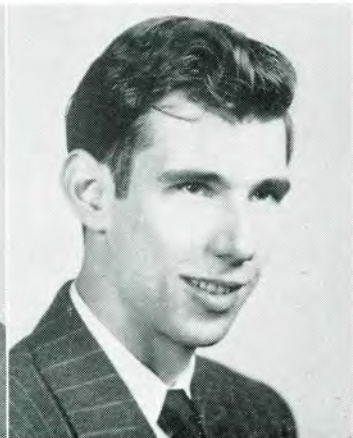
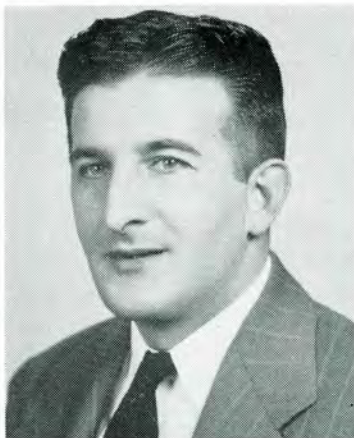
Rho Delta Phi
Chairman I.F.C.
S.A.M.

BERKLICH, Louis W., B.S.Ar.E.

CANDIDATES FOR DEGREES CONT'D

BERKLICH, Walter J., B.S.M.E.

Kappa Sigma Kappa
S.A.E.



BERR, Robert, B.S.E.E.

Double 'E' Club

BETTS, Douglas, B.S.I.E.

BIELECKI, Anthony, B.S.B.A.

Rifle & Pistol Club
Varsity Club



BLIVEN, Arthur R., B.S.Ar.E.

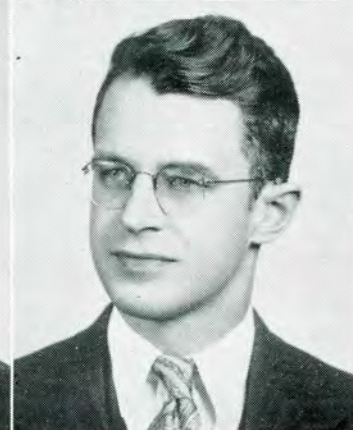
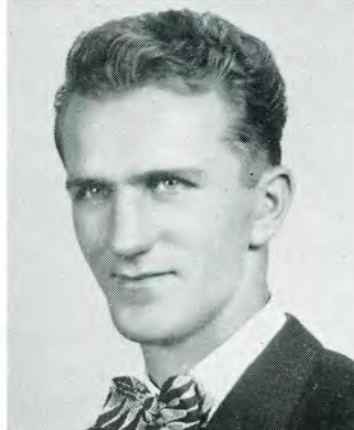
Arch. Club
A.I.A. Member



BODENHORN, Glen, B.S.B.A.

BOGDAN, Edward A., B.S.Ar.E.

Arch. Club
A.I.A. Member



BOUND, Keith C., B.S.M.E.

A.S.T.E.

CANDIDATES FOR DEGREES CONT'D



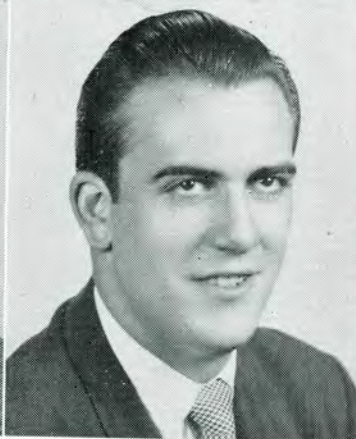
BOWLING, John C., B.S.I.E.
Alpha Gamma Upsilon
S.A.M.
S.A.E.

BROOKE, Lee H., B.S.I.E.
Rifle & Pistol Club
Varsity Club



BRYNIARSKI, Stanley, B.S.M.E.

BUDOWICK, John, B.S.B.A.



BUSH, Donald R., B.S.I.E.
Rho Delti Phi
S.A.E.

CACICEDO, Emilio R., B.S.B.A.
Basketball Team
Varsity Club



CALALUCA, Alex M., B.S.M.E.
Astronomy Club

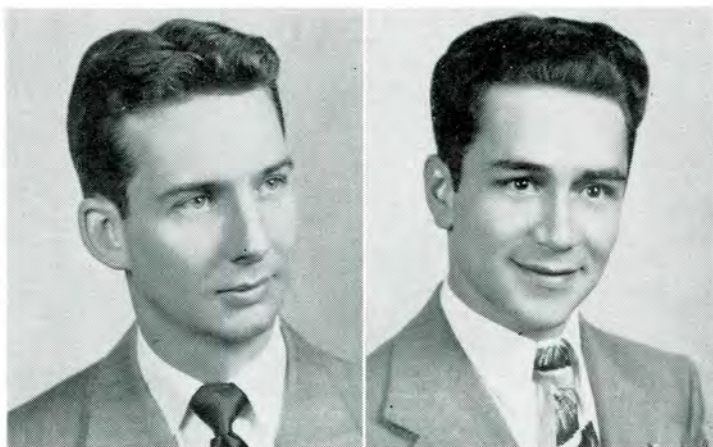
CANNON, Thomas, B.S.B.A.

CANDIDATES FOR DEGREES CONT'D

CARMICHALE, Alan, B.S.C.E.

CERVI, Carmine, B.S.M.E.

Astronomy Club
Camera Club
S.A.E.



CHAMNES, Ralph J., B.S.M.E.

CHIAVEROTTI, Aldo, B.S.B.A.



CLANTON, Jack M., B.S.M.E.

Rho Delta Phi
I.F.C.
Square Club
S.A.E.

CLARK, James E., B.S.M.E.

S.A.E.

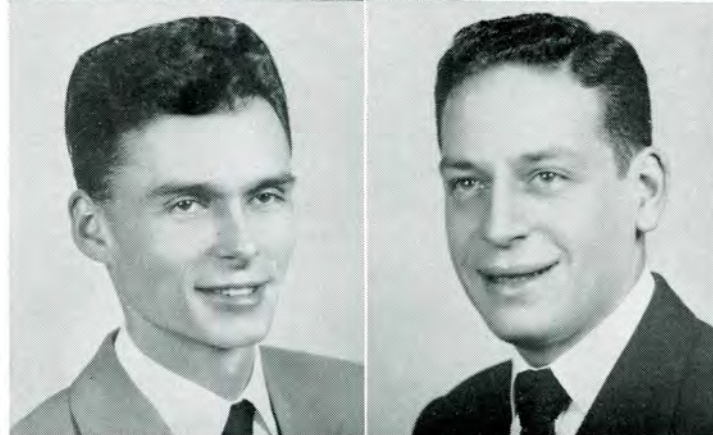


CLIFFORD, Eugene T., B.S.I.E.

Kappa Sigma Kappa
S.A.E.

COHEN, Irving H., B.S.B.A.

Baseball Team
Varsity Club
S.A.M.

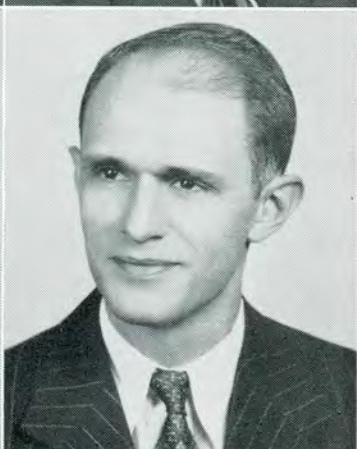


CANDIDATES FOR DEGREES CONT'D



CONTI, Girard N., B.S.B.A.

COONS, Joseph D., B.S.Ch.E.



COOPER, Jack E, B.S.B.A.
S.A.M.

COREY, Ralph I., B.S.M.E.



CORTE, Carlo, B.S.M.E.
V-President S.C.
Treasurer Junior Class
S.A.E.

COTTER, Richard, B.S.E.E.
Secretary Senior Class
Alpha Gamma Upsilon
Double 'E' Club
S.A.E.



COZZARIN, Edward C., B.S.M.E.
S.A.E.

CRAMER, Victor R., B.S.Ar.E.
Secretary Arch. Club
A.I.A. Member

CANDIDATES FOR DEGREES CONT'D

CROLL, Wallace J., B.S.B.A.

Rho Delta Phi
Editor TECH NEWS
Editor L-Book
Student Council
I.F.C.
S.A.E.
S.A.M.
J-Prom Committee



CROMWELL, Lee E., B.S.M.E.

Lambda Iota Tau
President K.S.K.
Bus. Mgr. TECH NEWS
Varsity Club
Tennis Team
I.F.C.
S.A.E.



CROWELL, Lee, B.S.Ar.E.

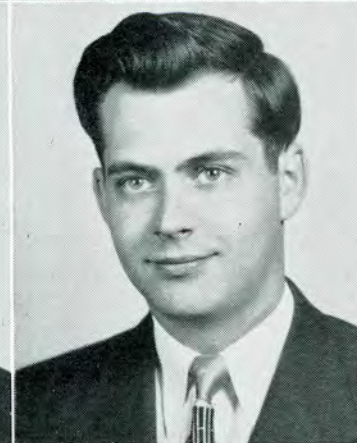
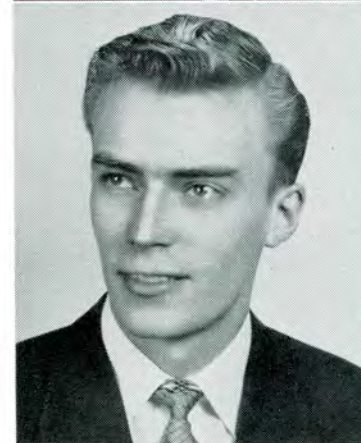
Arch. Club
A.I.A. Member

DAVIS, Kenneth, B.S.Ar.E.

Arch. Club
A.I.A. Member

DEAN, Robert F., B.S.M.E.

Kappa Sigma Kappa
Rifle Team
Varsity Club
S.A.E.



DeBUCK, Morris, Jr., B.S.B.A.

DeFRAYNE, Garry, B.S.Ch.E.

A.C.S.



DENOLF, Henry V., B.S.E.E.

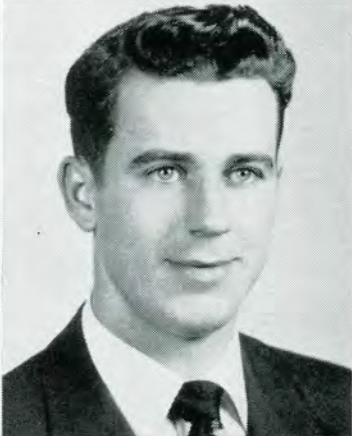
Double 'E' Club

CANDIDATES FOR DEGREES CONT'D



DIAMOND, Hugh, Jr., B.S.E.E.
Social Comm. Senior Class
Secretary Double 'E' Club

DITON, Irving, B.S.E.E.
Kappa Sigma Kappa
Double 'E' Club
S.A.E.



DOERFLINGER, Kenneth E., B.S.B.A.

DONOVAN, Joseph A., B.S.E.E.
Kappa Sigma Kappa
Double 'E' Club



DOW, Lawrence F., B.S.B.A.
S.A.E.

DOWNEY, James A., B.S.B.A.



DURRETT, Charles D., B.S.M.E.
Kappa Sigma Kappa

DZIATKOWSKI, Richard V., B.S.I.E.
Kappa Sigma Kappa
S.A.E.

CANDIDATES FOR DEGREES CONT'D

EFTHEMIU, Raymond W., B.S.Ar.E.

Arch. Club
A.I.A. Member

EISENMANN, John H., B.S.E.E.

ELWARD, Dean, B.S.C.E.

C.E. Club

FABA, Eugene J., B.S.Ch.E.

Rho Delta Phi
A.S.E.
A.C.S.

FARLEY, Richard R., B.S.M.E.

FERGUSON, Edward J., B.S.C.E.

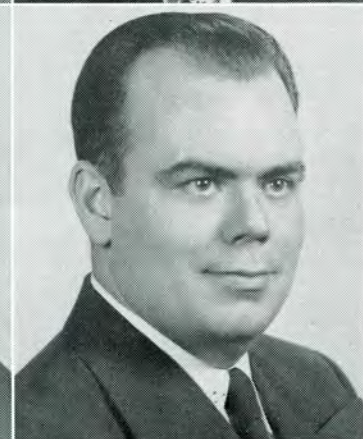
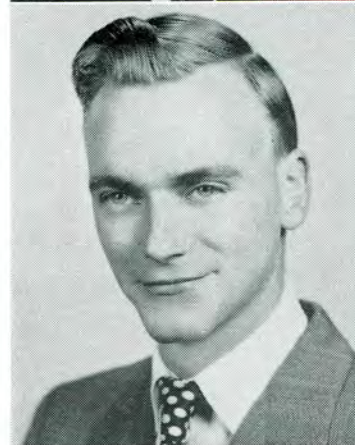
C.E.S.

FIDZINA, Frank, B.S.Ch.E.

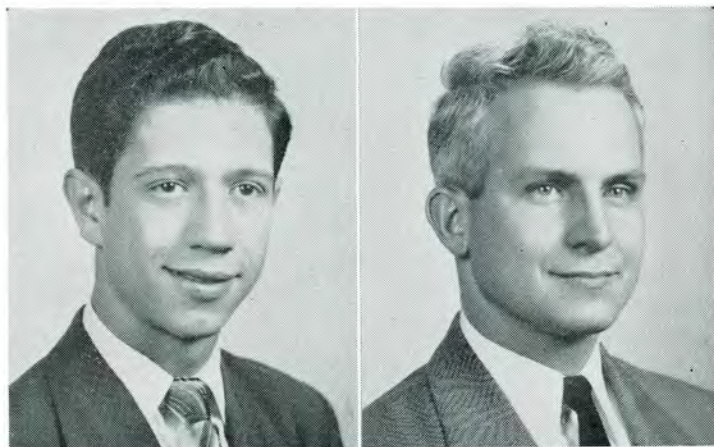
C.E.S.

FIELD, Frank E., B.S.E.E.

Double 'E' Club
S.A.E.



CANDIDATES FOR DEGREES CONT'D

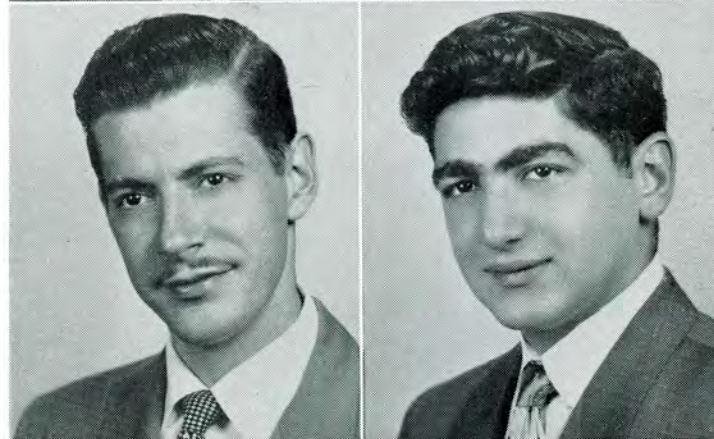


FINAZZIO, Mariano, B.S.B.A.

Phi Kappa Upsilon
S.A.E.

FLOOD, Francis R., B.S.I.E.

Rho Delta Phi



FOLEY, Douglas

Secretary K.S.K.
S.A.E.

FORGIONE, Joseph, B.S.M.E.

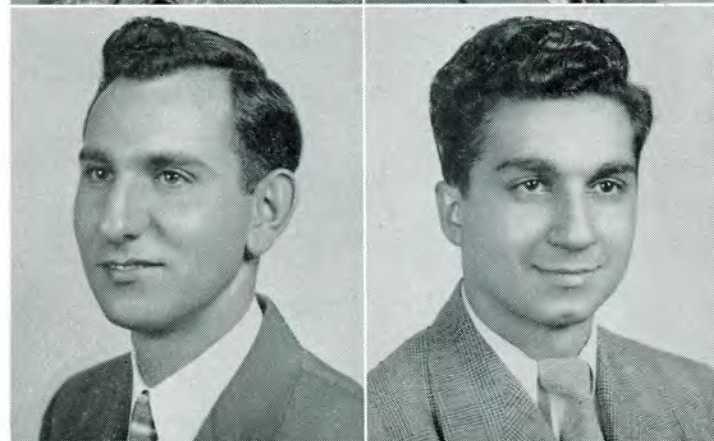
Alpha Gamma Upsilon



FUHRMAN, Helma, B.S.Ar.E.

GARVEY, William A., B.S.E.E.

Double 'E' Club
S.A.E.



GERSELL, William D., B.S.B.A.

S.A.M.

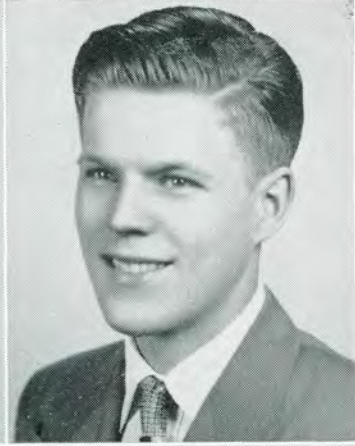
GIANNETTI, Mario P., B.S.I.E.

Rho Delta Phi
S.A.M.
S.A.E.

CANDIDATES FOR DEGREES CONT'D

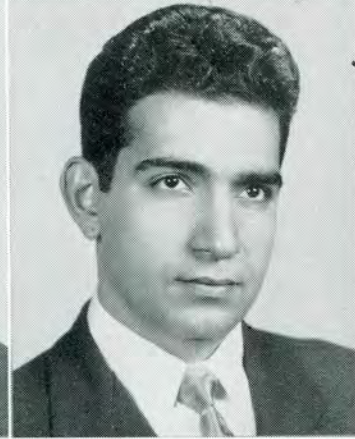
GIERATOWSKI, Arthur, B.S.M.E.

GIETZEN, Joseph, B.S.M.E.
S.A.E.



GILGALLON, Carl, B.S.M.E.
Rho Delta Phi

GODOSHIAN, Masis, B.S.C.E.
S.A.E.
C.E.S.



GOHL, Harry J., B.S.E.E.
S.A.E.

GOLEC, Thomas Jr., B.S.M.E.
Secretary P.K.U.
V-Chairman S.A.E.



GONIEA, John S., B.S.Ar.E.
Arch. Club
A.I.A. Member

GOOCH, Joseph M., B.S.E.E.
Double 'E' Club



CANDIDATES FOR DEGREES CONT'D



GOULD, Robert E., B.S.M.E.

Phi Kappa Upsilon
V-President S.C.

GRAF, Ernest H., B.S.M.E.

Secretary A.G.U.



GRIBENAS, Richard A., B.S.E.E.

HALL, Lloyd C., B.S.I.E.

Kappa Sigma Kappa
S.A.M.



HAMPARIAN, Edward, B.S.M.E.

Treasurer Senior Class
Rifle Team
Varsity Club
S.A.E.

HARRISON, William Lee, B.S.C.E.

Treasurer Varsity Club
L-Book Staff Photographer



HART, Benjamin F., B.S.Ae.E.

Phi Kappa Upsilon
Square Club
S.A.E.
I.A.S.

HART, Robert J., B.S.I.E.

Alpha Gamma Upsilon
Football Team
S.A.M.
S.A.E.

CANDIDATES FOR DEGREES CONT'D

HEBERT, Russell B., B.S.Ae.E.
Secretary I.A.S.
S.A.E.



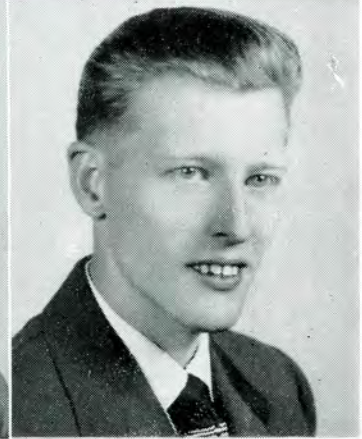
HEINS, Edward J., B.S.Ar.E.
Arch. Club
A.I.A. Member

HEINTZ, Robert E., B.S.M.E.
Alpha Gamma Upsilon
Lensmen Club
S.A.E.



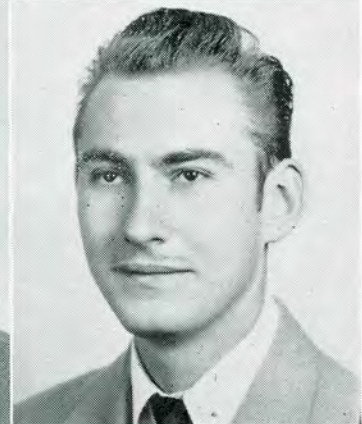
HEMAN, George H., B.S.Ch.E.
S.A.E.
A.C.E.

HIBBINS, Fred W., B.S.M.E.
Kappa Sigma Kappa
S.A.E.



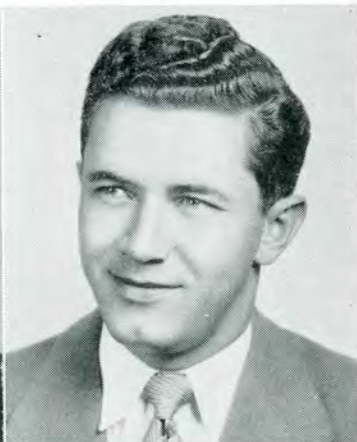
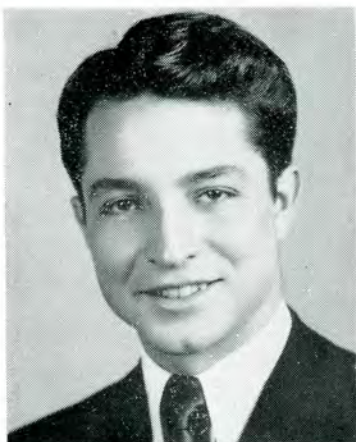
HODGES, William W., B.S.E.E.
V-President Senior Class
Student Council
Radio Club

HOLLINGER, Joseph B., B.S.B.A.



HORKAVSON, Daniel R., B.S.B.A.
S.A.M.

CANDIDATES FOR DEGREES CONT'D



HUEBNER, Melburn E, B.S.M.E.
S.A.E.

HURST, Ralph, B.S.Ae.E.
S.A.E.
I.A.S.



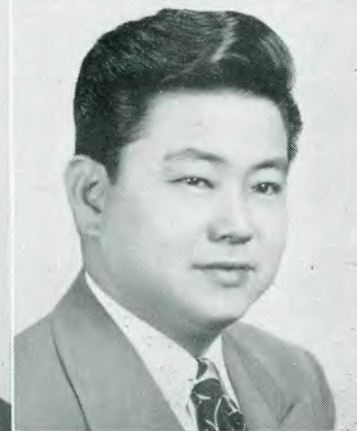
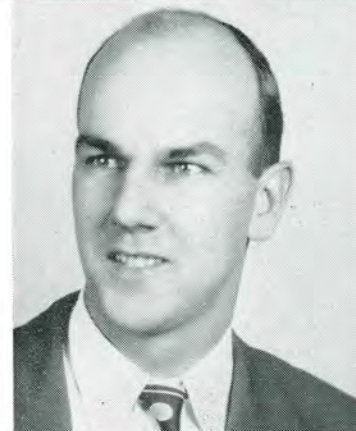
JAKIMOVICH, Anthony, B.S.E.E.
Kappa Sigma Kappa
Double 'E' Club
S.A.E.

JAKUBOWSKI, Robert J., B.S.I.E.
S.A.M.



JARAMILLO, Gilberto, B.S.Ar.E.
Arch. Club
A.I.A. Member

KAHN, Harold Z., B.S.Ar.E.
V-President Arch. Club
TECH NEWS



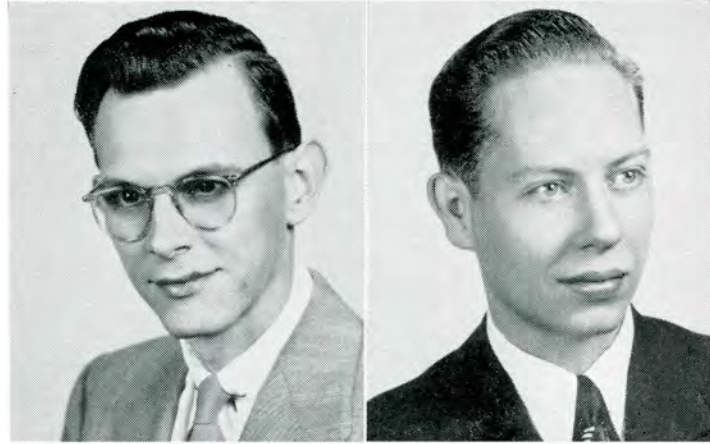
KARGETTA, William, B.S.M.E.

KAYAHARA, Koji, B.S.Ar.E.
Arch. Club
A.I.A. Member

CANDIDATES FOR DEGREES CONT'D

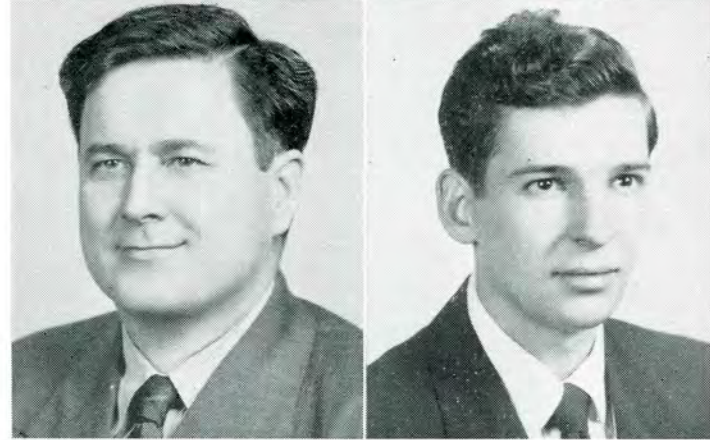
KELLER, Harry W., B.S.M.E.

KENNEDY, Alfred C., B.S.B.A.
Treasurer S.A.M.



KERANEN, Reynold, B.S.E.E.
Rifle & Pistol Club
Varsity Club

KING, Robert B.S.M.E.
Alpha Gamma Upsilon
S.A.E.



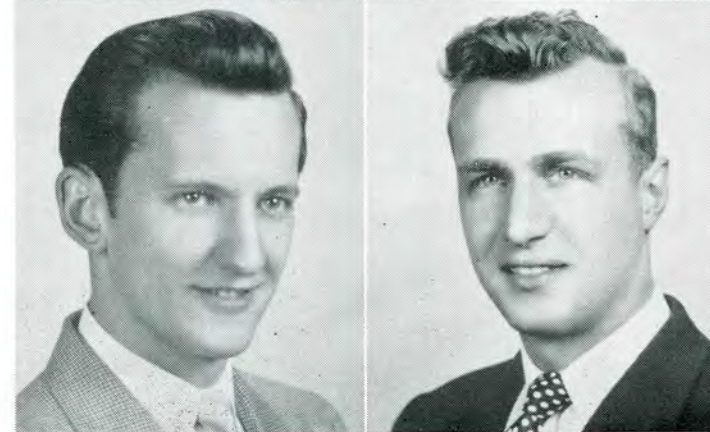
KIRKENMEIER, Milton, B.S.I.E.
Treasurer S.A.M.
S.A.E.
A.S.I.E.
Rifle Team

KIRSCH, Kendall E., B.S.B.A.
Square Club
S.A.M.



KMIEC, Leonard F., B.S.E.E.
Kappa Sigma Kappa
TECH NEWS
Double 'E' Club
S.A.E.

KNOTH, Marvin C., B.S.M.E.
Phi Kappa Upsilon
S.A.E.



CANDIDATES FOR DEGREES CONT'D



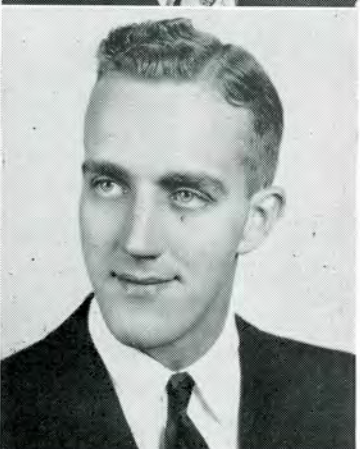
KOEPKE, Frederick Jr., B.S.M.E.
S.A.E.

KOSSAREK, Edward L., B.S.B.A.
Basketball Team
Varsity Club
S.A.M.



KUDER, Del A., B.S.E.E.
Double 'E' Club
S.A.E.

KUHN, Theodore E., B.S.Ar.E.
Arch. Club
A.I.A. Member



KURI, Edmundo, B.S.Ar.E.
Arch. Club
A.I.A. Member

LARSON, Edward V., B.S.B.A.
Student Council
V-President Varsity Club
Tennis Team



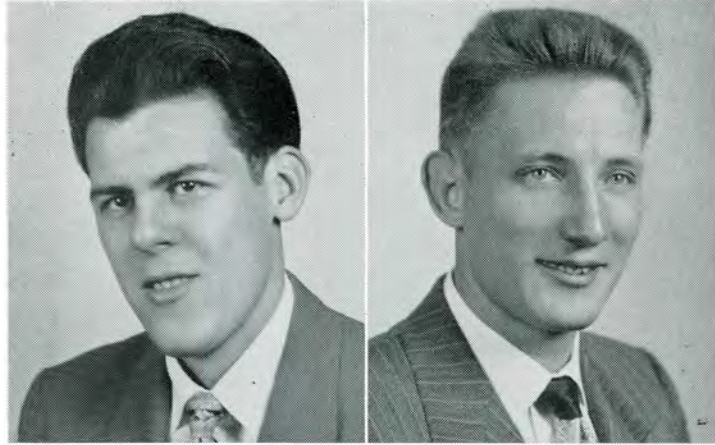
LAZAR, John W., B.S.I.E.
Alph Gamma Upsilon
S.A.M.
S.A.E.

LEITH, Charles R., B.S.M.E.
S.A.E.

CANDIDATES FOR DEGREES CONT'D

LEPRI, Frank A., B.S.M.E.

LIMBURG, George M., B.S.M.E.
President P.K.U.
S.A.E.



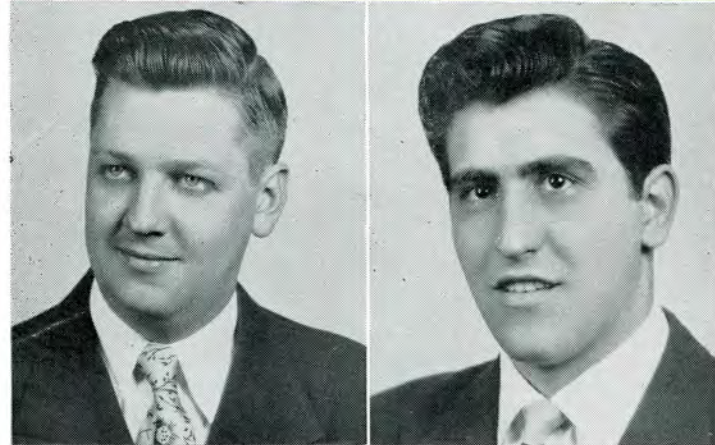
LINDH, Delwin A., B.S.B.A.

LOPEZ, Joseph M., B.S.E.E.
Double 'E' Club
S.A.E.



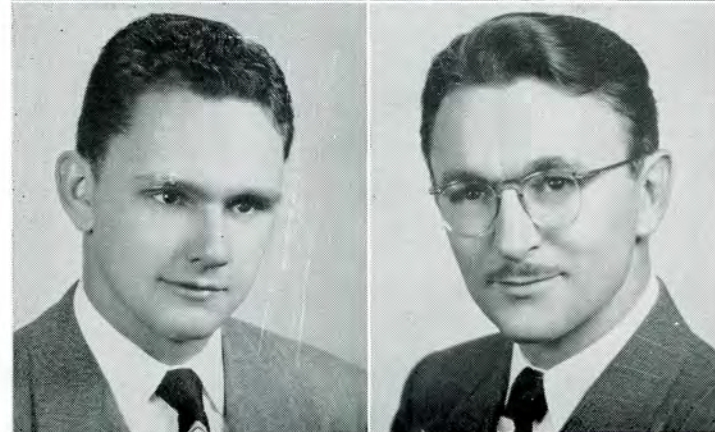
LOUNSBERY, George N., B.S.M.E.
S.A.E.
L-Book Staff

LOVALENTI, Sam, B.S.E.E.
Double 'E' Club
S.A.E.

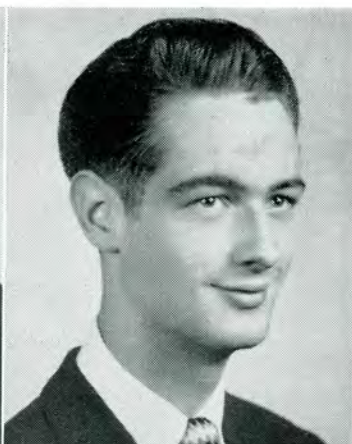
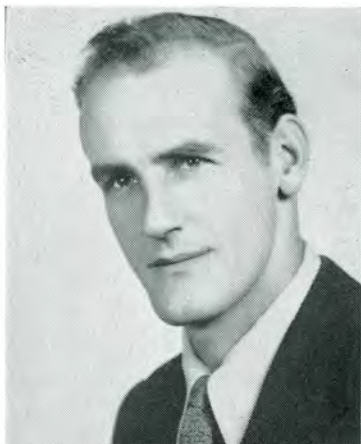


MALSTROM, John C., B.S.M.E.

MANCE, John J., B.S.M.E.
President P.K.U.
President Junior Class



CANDIDATES FOR DEGREES CONT'D

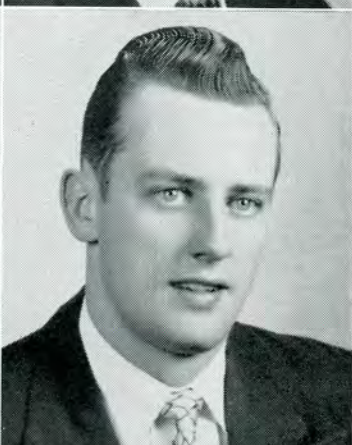


MARCINKOWSKI, Alex, B.S.B.A.

President Varsity Club
Football
Track

MARCUM, Edwin, B.S.M.E.

Treasurer Soph. Class
President Junior Class
Editor TECH NEWS
Student Council

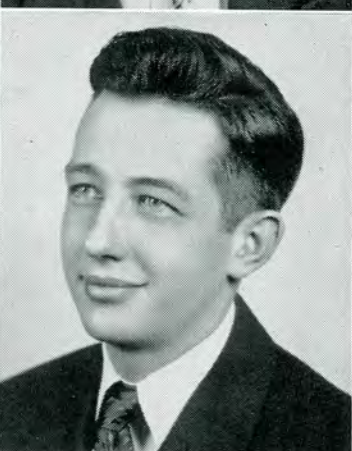
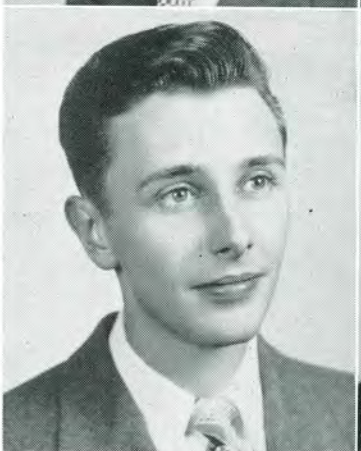


MATUSZEWSKI, Stanley, B.S.M.E.

S.A.E.

MAWHORTER, Raymond, B.S.B.A.

Basketball Team
Baseball Team
Varsity Club



McCALDEN, Arthur G., B.S.M.E.

Phi Kappa Upsilon
S.A.E.

McCARTHY, Charles L., B.S.B.A.

Student Mgr. Basketball
Varsity Club



McCOSKEY, Walter F., B.S.M.E.

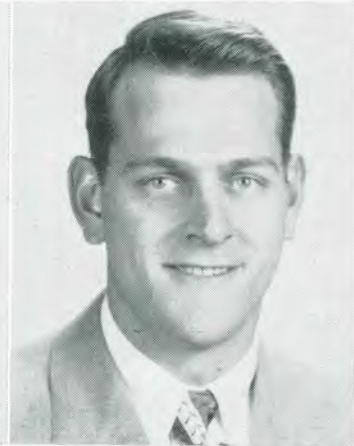
Alpha Gamma Upsilon
S.A.E.

McDONALY, Jesse T., B.S.I.E.

Golf Team
Varsity Club
C.E.S.

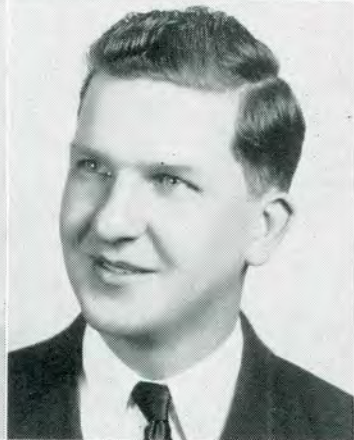
CANDIDATES FOR DEGREES CONT'D

McLEAN, William E., B.S.M.E.
S.A.E.



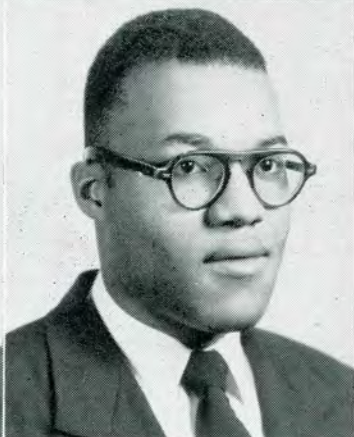
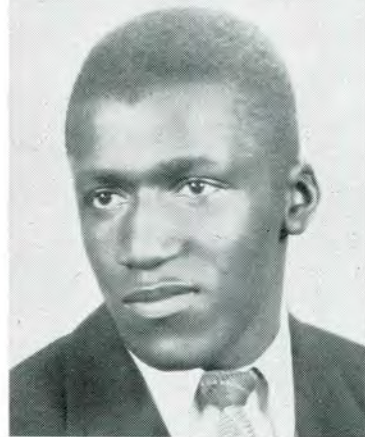
MEYER, John, B.S.M.E.

MICHAELS, Michael, B.S.M.E.
Kappa Sigma Kappa
S.A.E.



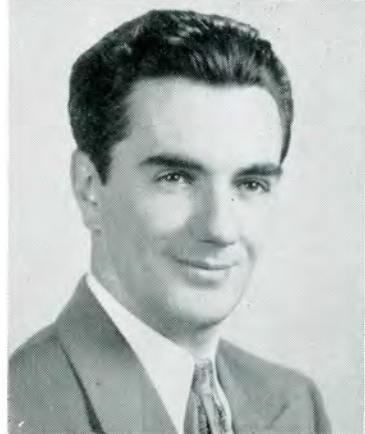
MILEK, Theodore, B.S.M.E.
Alpha Gamma Upsilon
S.A.E.

MORRIS, Wingfield, B.S.C.E.
C.E.S.



MOORE, Robert, B.S.I.E.

MORRISON, Grant A., B.S.M.E.
Phi Kappa Upsilon
S.A.E.



MULLER, Arthur J., B.S.Ch.E.
A.C.S.

CANDIDATES FOR DEGREES CONT'D



NICKELSON, Thomas S., B.S.M.E.

O'DELL, Theodore L., B.S.I.E.

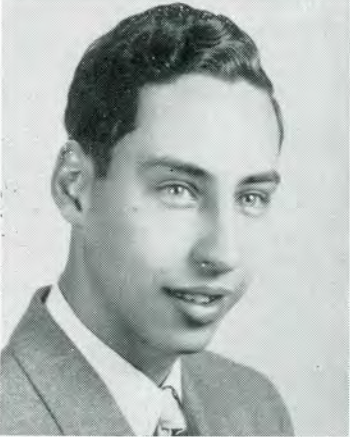


OGGER, Earl G., B.S.M.E.

Lambda Iota Tau
President Senior Class
Phi Kappa Upsilon
Secretary Junior Class
Student Council
S.A.E.

OPPERTHAUSER, Calvin, B.S.E.E.

Secretary Senior Class



OSTLER, Donald R., B.S.E.E.

Double 'E' Club
S.A.E.

PARKER, Donald H., B.S.M.E.

Secretary P.K.U.
President Junior Class
Student Council



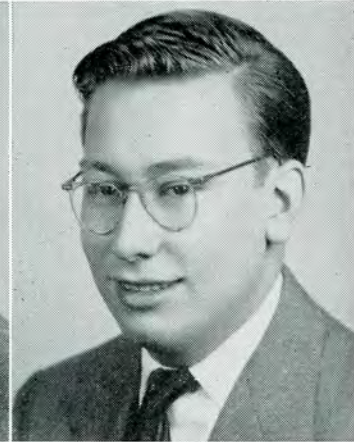
PARKER, Kenneth L., B.S.I.E.
S.A.M.

PATERSON, David, B.S.M.E.

CANDIDATES FOR DEGREES CONT'D

PATTON, Richard E., B.S.E.E.

Rho Delta Phi
Double 'E' Club
S.A.E.

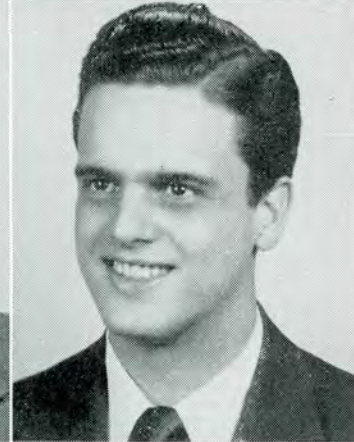


PAVER, Donald F., B.S.E.E.

Glider Club
Double 'E' Club

PAYNE, Edwin, B.S.Ch.E.

Square Club

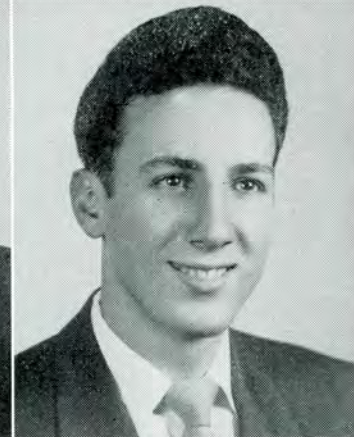


PELAMATI, Jack R., B.S.E.E.

Rho Delta Phi
Lambda Iota Tau
TECH NEWS
Double 'E' Club
S.A.E.

PENOZA, Frank J., B.S.I.E.

Rho Delta Phi



PERFETTO, Gino, B.S.M.E.

Phi Kappa Upsilon
S.A.E.

PERRONE, Michael J., B.S.E.E.

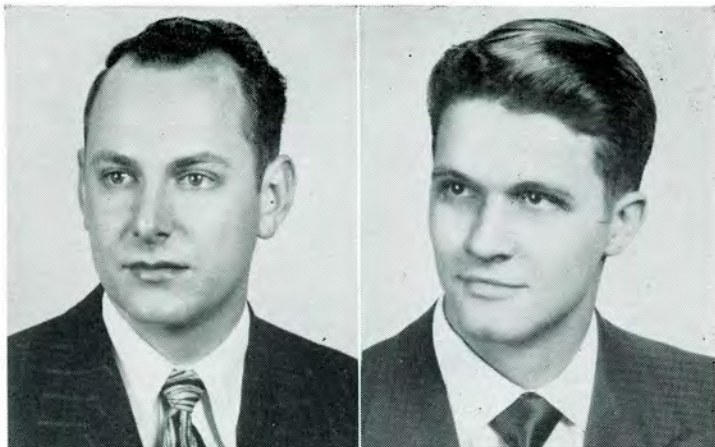
Alpha Gamma Upsilon
Double 'E' Club



PETRAK, Henry N., B.S.M.E.

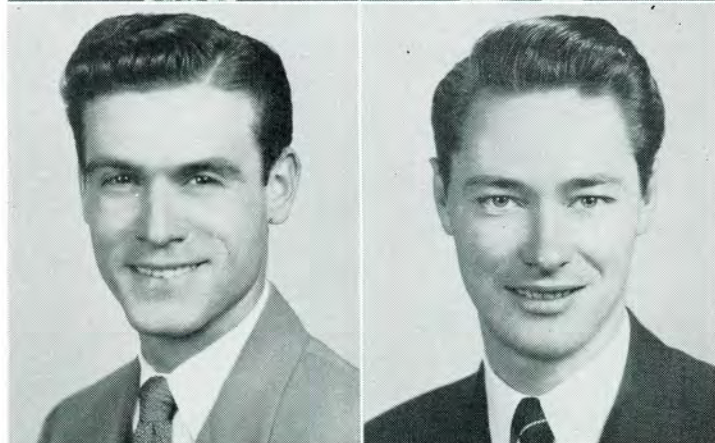
President A.G.U.

CANDIDATES FOR DEGREES CONT'D



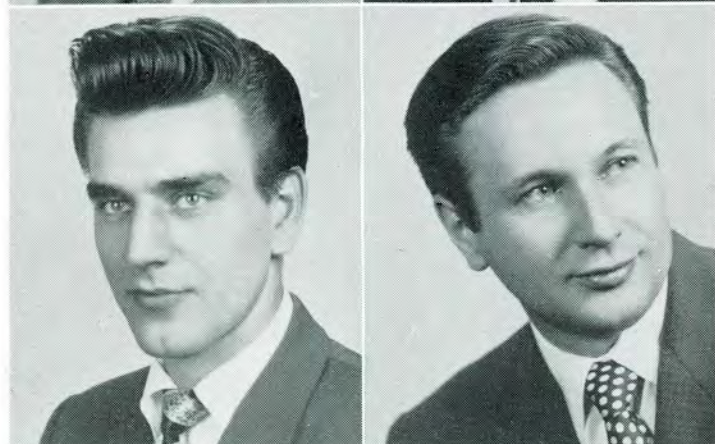
POCHERT, Gerald, B.S.B.A.

**POLESCHUK, Nicholas Jr., B.S.M.E.
S.A.E.**



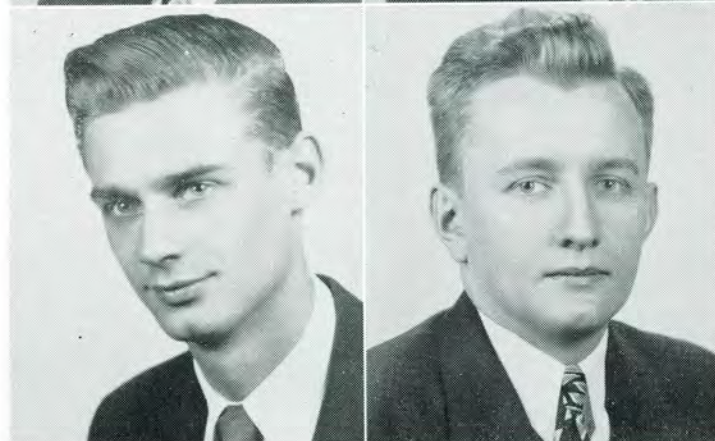
POMPEII, Phillip, B.S.M.E.
Treasurer A.G.U.
S.A.E.

PRECHT, Gordan, B.S.B.A.



PREVOST, Alvin R., B.S.Ar.E.
President A.G.U.
V-President S.C.
A.I.A. Member

PRICE, Richard F., B.S.I.E.
S.A.M.
S.A.E.

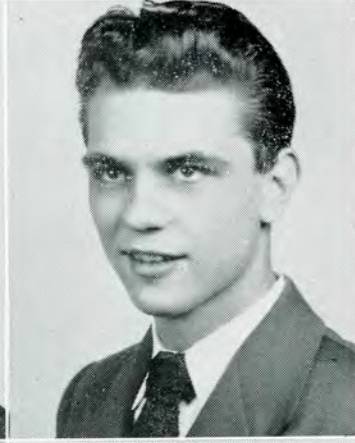


PRUSAITIS, William, B.S.Ar.E.
Phi Kappa Upsilon
Arch. Club

PRZYBYLSKI, Edward, B.S.I.E.
S.A.M.
S.A.E.

CANDIDATES FOR DEGREES CONT'D

PUIEWSKI, Robert, B.S.E.E.
Double 'E' Club



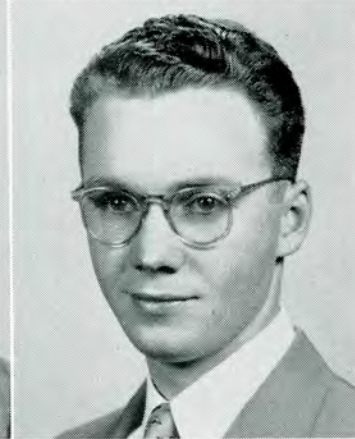
REID, Richard R., B.S.Ar.E.
Arch. Club
A.I.A. Member

REMSKI, John F., B.S.E.E.
Kappa Sigma Kappa
Treasurer Senior Class



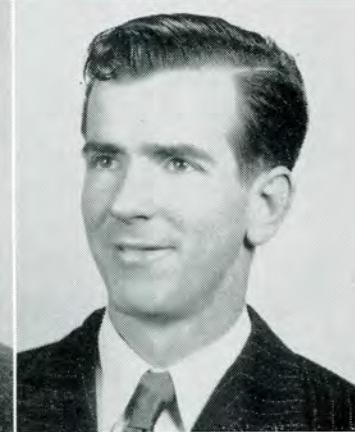
RICHARDSON, William, B.S.M.E.
Rho Delta Phi
I.A.S.
S.A.E.

RILEY, Thomas O., B.S.B.A.



ROLLER, Donald, B.S.I.E.

ROMANOWSKI, Edward, B.S.Ch.E.
Kappa Sigma Kappa
A.C.S.



RUNYAN, Thomas F., B.S.M.E.
Rho Delta Phi
S.A.E.

CANDIDATES FOR DEGREES CONT'D

PUIEWSKI, Robert, B.S.E.E.
Double 'E' Club



REID, Richard R., B.S.Ar.E.
Arch. Club
A.I.A. Member

REMSKI, John F., B.S.E.E.
Kappa Sigma Kappa
Treasurer Senior Class



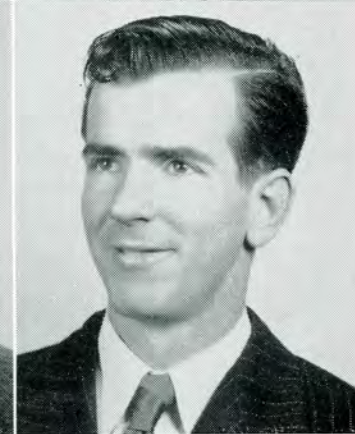
RICHARDSON, William, B.S.M.E.
Rho Delta Phi
I.A.S.
S.A.E.

RILEY, Thomas O., B.S.B.A.



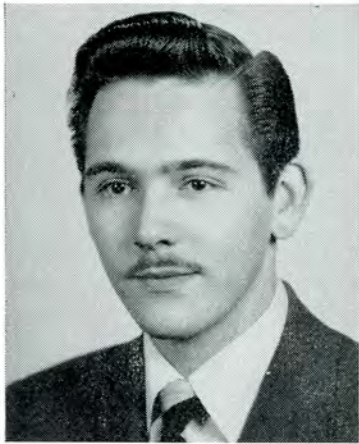
ROLLER, Donald, B.S.I.E.

ROMANOWSKI, Edward, B.S.Ch.E.
Kappa Sigma Kappa
A.C.S.



RUNYAN, Thomas F., B.S.M.E.
Rho Delta Phi
S.A.E.

CANDIDATES FOR DEGREES CONT'D

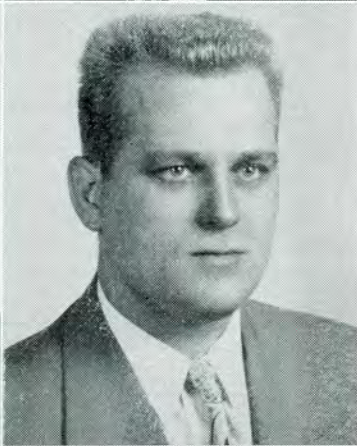


RUPINSKI, John L., B.S.B.A.

L-Book Staff
TECH NEWS Staff
Student Council
Student Mgr. Basketball
Varsity Club
S.A.E.

SALAZAR, Paulino, B.S.Ar.E.

Fencing Team
Arch. Club



SCHENKEL, Roy W., B.S.E.E.

Phi Kappa Upsilon
Double 'E' Club
I.R.E.

SCHMIDT, Carleton C., B.S.E.E.

Double 'E' Club
S.A.E.



SCHOENHEIT, Albert, B.S.Ae.E.

Phi Kappa Upsilon
I.A.S.
S.A.E.

SCHUELKE, George, B.S.I.E.



SCHUR, LaVerne, B.S.B.A.

SCHUTZKY, Alex H., B.S.M.E.

CANDIDATES FOR DEGREES CONT'D

SCHWARZE, Karl H., B.S.M.E.
S.A.E.



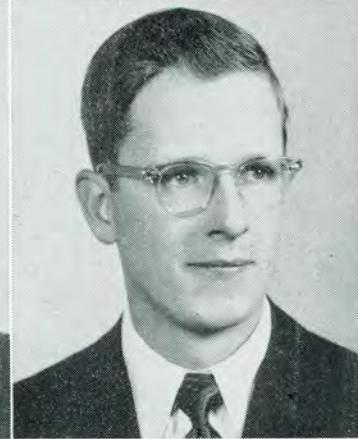
SKELLY, Jerome L., B.S.B.A.

SLIMAN, Fouad A., B.S.B.A.



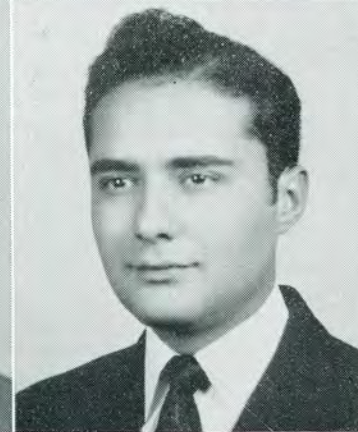
SMITH, Marvin M., B.S.E.E.
Tennis Team
Varsity Club

SOLSKI, Frank A., B.S.M.E.



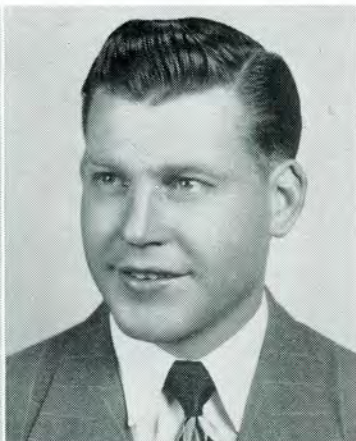
SPILSBURY, Maxwell, B.S.M.E.
Kappa Sigma Kappa
S.A.E.

STAPLETON, Clarence, B.S.M.E.



STEIN, Leo I., B.S.Ae.E.
Arch. Club
A.I.A. Member

CANDIDATES FOR DEGREES CONT'D

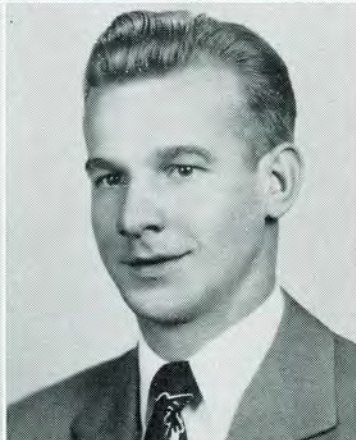


STEINBERGER, George, B.S.E.E.

Kappa Sigma Kappa
Double 'E' Club

STENBERG, Paul J., B.S.Ae.E.

Rho Delta Phi
I.A.S.



STUART, Clark D., B.S.B.A.

Phi Kappa Upsilon
Secretary I.F.C.

SUCHOSKI, Anthony, B.S.M.E.

S.A.E.

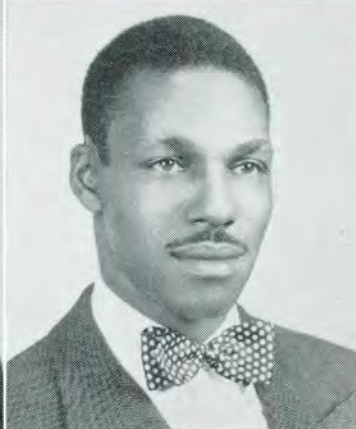


SWIECICKI, Adolph, B.S.I.E.

Kappa Sigma Kappa
Tennis Team
Varsity Team
S.A.M.

TACEY, Wesley J., B.S.Ch.E.

A.C.S.



TAMANGE, Henry J., B.S.M.E.

Astronomy Club
S.A.E.

TEAMOR, Jeffrey, B.S.B.A.

S.A.M.

CANDIDATES FOR DEGREES CONT'D

THOMAS, Stephen D., B.S.I.E.

Kappa Sigma Kappa

TILLEY, Robert J., B.S.E.E.

Student Council
Double 'E' Club

TOBIAS, Charles M., B.S.Ae.E.

I.A.S.
S.A.E.

TOMAC, Anthony, B.S.M.E.

S.A.E.

TRACZYK, Richard, B.S.Ae.E.

I.A.S.

ULRICH, Glenn, B.S.M.E.

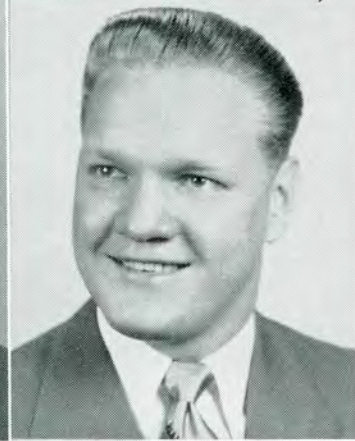
S.A.E.

VAGNETTI, John D., B.S.M.E.

Phi Kappa Upsilon
S.A.E.

VALENTINE, Donald, B.S.M.E.

Alpha Gamma Upsilon
S.A.E.



CANDIDATES FOR DEGREES CONT'D



VAN LEUVEN, William C., B.S.M.E.

WAGAR, Richard A., B.S.B.A.
Rho Delta Phi
S.A.E.

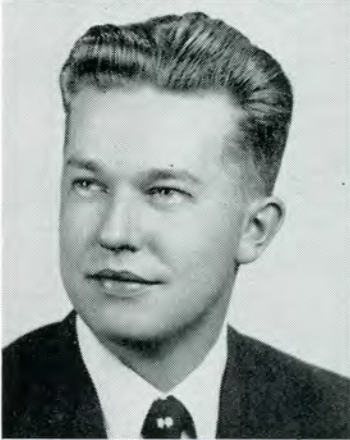


WEBER, Howard L., B.S.M.E.

Rho Delta Phi
S.A.E.

WHEELER, Clarence, B.S.E.E.

TECH NEWS Staff Photographer
Double 'E' Club
S.A.E.



WILHELM, R.

WISE, Joseph, B.S.B.A.
S.A.E.
Manager, Baseball



WOLCOTT, Lyle A., B.S.E.E.
S.A.E.

YULKOWSKI, Leon B., B.S.Ar.E.

Lambda Iota Tau
Fencing Team
Arch. Club
Varsity Club
A.I.A. Member

SENIOR STAG

A college loses most of its value if it does not have several individual traditions to make it unique among the number of institutions of higher learning in the United States. At L.I.T., one of the things each senior looks forward to is the date, during the last term of his college life, that is set aside for the SENIOR STAG.

As the following pages show, this is the time when the administration, faculty, and seniors let their hair down in a night of fun, friendship, and frolic. It's one night that none of us will ever forget.



Some told jokes



Speeches too

But what is Mr. Garrell doing?



SENIOR STAG Cont'd



Early in the evening we posed



Even the frat pledges are allowed to eat



Austerity reigns

INTERFRATERNITY COUNCIL

The Interfraternity Council is composed of representatives of all four fraternities and acts as a forum for the discussion of mutual problems. The two main functions of the council are to establish uniform pledge seasons and to maintain a standard scholastic level for all pledges. The council also regulates the social calendar of the fraternities in conjunction with the Student Council.

The two social activities sponsored by the I.F.C. are the annual Interfraternity Dance and the Founder's Day Dance.

The Chairmanship of the council rotates annually and during the past school year John Belavich of Rho Delta Phi acted as Chairman and Clark Stuart of Phi Kappa Upsilon was Secretary-Treasurer.



Chairman John Belavich



INTERFRATERNITY COUNCIL Cont'd



ALPHA GAMMA UPSILON

Epsilon Chapter, of Alpha Gamma Upsilon, has completed a full season of social activities during the past school year. The social highlights included two pledge seasons and the national fraternity convention which was held in Toledo, Ohio.

Each pledge season was marked by the parties held for the members by the pledges and by the traditional A.G.U. "hazing day". The Alpha Gams sponsored several hayrides and bowling parties with the other L.I.T. fraternities.

The national convention was attended by most of the Epsilon members and proved to be a great success. At the Formal Ball George Hendrickson had the pleasure of seeing his date crowned "Fraternity Queen." Epsilon Chapter is to be host for the convention next year and plans are already under way to make the event successful.

The fraternity participated in the annual Founder's Day program and won honorable mention in the organizational awards.



The Alpha Gamma pledges are always distinguished with their gold bricks and bow ties.



The A.G.U. officers are Bob King, Kieth Edwards, C. Ortolf, Al Prevost, Hank Backstrand, Larry Diedrich, Don Brewster.

ALPHA GAMMA UPSILON Cont'd



H. Backstrand
W. Holzer
J. Lazar

D. Brewster
C. Henry
W. McCosky
P. Pompeii

R. Cotter
W. Hietala
C. Ortolf
A. Prevost

J. Forgione
R. Klann
R. Parker
R. Sharp

E. Graf
R. King
L. Pincheck

KAPPA SIGMA KAPPA



Eggs a la "Greek".

Kappa Sigma Kappa, a national fraternity, is represented at L.I.T. by the Michigan Beta Chapter. The fraternity had its origin at the Virginia Military Institute shortly after the Civil War. At first the fraternity was extended only to southern colleges and universities but has since expanded on an international scale.

The outstanding social event of the past school year was the "Sweetheart Ball". This gala event was held at the Veteran's Memorial in the Grand Ballroom. Formal initiations took place at the Leland Hotel and the Van Dyke Club. "Operation Skitski", an all pledge function, was held at Plewa Hall. The annual spring outing was staged at Homestead Park.

The Kappa Sig national convention met at Indianapolis and was attended by several Beta members.



KAPPA SIGMA KAPPA Cont'd



"GREEKS" IN ACTION



KAPPA SIGMA KAPPA Cont'd



W. Berklich
L. Cromwell
R. Ferrari
F. Hibbins

R. Calleja
R. Dean
D. Foley
A. Jakimovich

M. Cardon
I. Ditton
G. Gray
R. King

E. Clifford
J. Dovovan
F. Gessler
L. Kmiec

R. Crawford
R. Dzaitkowski
L. Hall
J. Lelpy

KAPPA SIGMA KAPPA Cont'd



H. Lang

D. Leech

M. Spilsbury

Ed Shayamski

M. Michels

G. Steinburg

A. Swiecicki

S. Thomas

R. Wilhelm

PHI KAPPA UPSILON



The officers of Delta Chapter are Jack Ferrel, George Limburg, Bill Pursaitus, and Tom Golec.

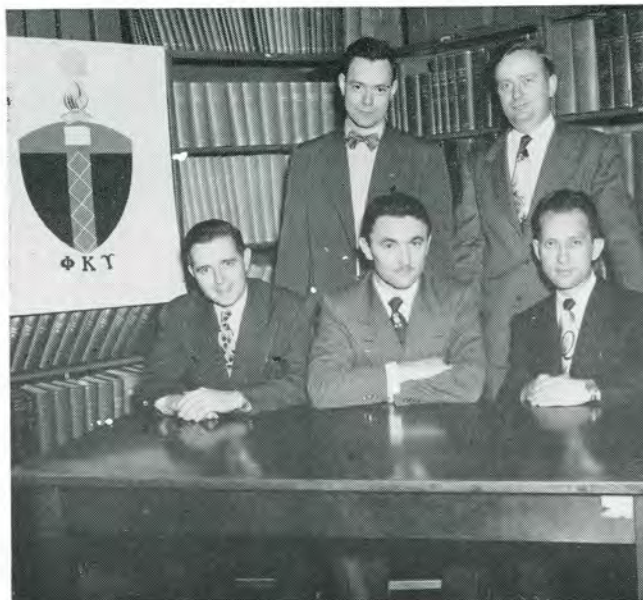


Never a peaceful moment for the Phi Kappa pledges.

The activities of Alpha and Delta Chapters, Phi Kappa Upsilon, were many and varied during the past school year. Delta chapter held two pledge seasons in day school. Several hayrides and bowling parties were staged with the other fraternities.

The social event of the year was the annual dinner dance held at the Forest Lake Country Club. Phi Kappa participated in this year's Founder's Day program and won first prize for the organizations. Also, the fraternity won first prize in the "Rat Race" at Founder's Day.

Alpha Chapter politicians are, Don Parker, John Mance, Bob Gould, and George Crittendon.



PHI KAPPA UPSILON Cont'd



D. Bain
O. DeClercq
T. Golec
J. Kmiecick

F. Bell
L. Esch
R. Gould
M. Knoth

L. Brenz
A. Fahrner
M. Hackewicz
C. Lazar

N. Borocus
J. Farrel
M. Harris
J. Lauer

G. Crittenden
R. Geshwender
G. Hutzel
G. Limburg

PHI KAPPA UPSILON Cont'd



S. Lutz

J. Nickelson

R. Pniewski

C. Stuart

J. Mance

E. Ogger

W. Pursaitus

P. Thompson

A. McCalden

D. Parker

J. Saunders

T. Todd

G. Morrison

W. Parker

J. Sobieraj

J. Vagnetti

F. Nowik

G. Perfetto

A. Schoeniet

J. Williamson

RHO DELTA PHI

Rho Delta Phi Fraternity is represented at Lawrence Tech by Alpha Chapter in night school and Beta Chapter in day school.

Rho Delta is purely a social fraternity whose primary function is the promotion of good fellowship and friendship. The fraternity always takes an active part in college activities, student government, and publications.

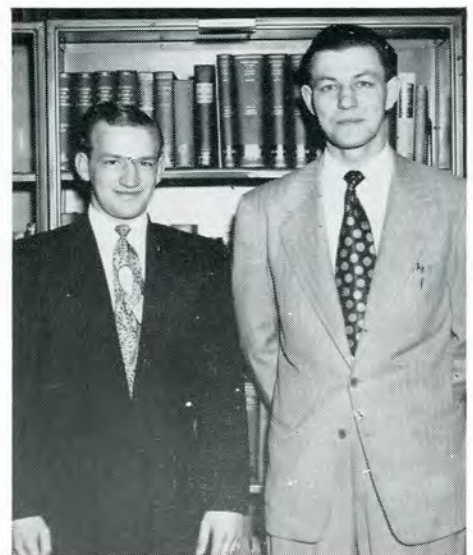
The highlights of this year's social season were the Fall and Spring Presentation Dances that were held at the Lee Plaza. The formal initiation dinners were staged at Huyler's. Other social events included two pledge seasons, a golf meet and several hayrides and bowling parties.



The Rho Delta Phi officers are Stan Kukawka, Bill Mullaly, George Jamgochian and Jim Butera.



Pledge Master George Jamgochian and his "wards" were very amiable at the pledge mixture.



The Alpha Chapter officers

RHO DELTI PHI Cont'd



Belavich, John
Flood, Francis
Mullay, Wm.
Solomon, Michael

Bush, Donald
Giannitti, Mario
Patton, Richard
Rupinski, Dorn

Chaldekos, Wm.
Harrison, Robert
Pelamati, Jack
Wagar, Richard

Croll, Wallace
Jamgochian, George
Penoza, Frank
Weber, Howard

Donaldson, Clare
Kuzel, Edward
Richardson, Wm.
Wheeker, Richard



— SIGN OF SUPERIORITY
 — SYMBOL FOR SHOWROOM SUCCESS
 AND LASTING SATISFACTION!

Leading manufacturers of finished products find that products by L. A. Young, included in them, add greatly to their successful showroom acceptance. Your use of any of the following—research developed and quality fabricated by L. A. Young—will give your products greater Showroom Superiority and lasting satisfaction:

For Automotive:

Spring Units (Including Famous Adjustable "Select-O-Seat" Units) and "Flex-O-Lator" Padding Supports for Seat and Back Cushions . . .
 Garnish Mouldings—Decorative Trims . . .
 Precision Mechanical Springs—Such As Valve, Clutch and Brake Springs . . .
 Instrument Dash Panel Stampings . . .

For Home Furnishings:

Inner-Spring Units for Mattresses . . .
 Bed Springs of Various Designs . . .
 Flex-O-Lator Padding Supports for Bedding and Furniture Industries . . .

For Appliances:

Refrigerator Shelves and Baskets . . . Oven Racks

For Apparel:

Star Service All-Wire & Paper-Strut Hangers

L. A. Young Specialists in Design and Fabrication of Superior Springs and Metal Products Will Be Glad to Consult With You On Better Product Applications.



L. A. YOUNG SPRING & WIRE CORPORATION

GENERAL OFFICES: DETROIT 11, MICH. . . . IN CANADA: L. A. YOUNG INDUSTRIES, LTD., WINDSOR, ONT.

STEEL GOES TO SCHOOL, TOO!



Yes, steelmakers must be students! They must study constantly ways and means to make steel more useful. They must continue to improve today's products . . . must make better products for the future.

Better autos . . . better trains . . . better buildings . . . better housing—all depend on improvements in the steel they're made from.

That's why the men at Great Lakes Steel constantly work and study to make better steel for better products tomorrow.

- N-A-X HIGH-TENSILE steel is used in various parts of most automobiles.
- Stran-Steel framing members frame many modern apartment houses.
- Stran-Steel Quonset buildings are used throughout America for all kinds of storage, commercial and industrial buildings . . . for housing farm machinery and livestock.
- More and more NAILABLE STEEL FLOORS are being installed in freight cars, trucks and trailers.

GREAT LAKES STEEL CORPORATION

Ecorse, Detroit 29, Michigan • Offices in Principal Cities

NATIONAL STEEL CORPORATION



PRODUCER
OF



HIGH-TENSILE
STEEL

TO THE LAWRENCE GRADUATE

FOUR trying years are now behind you. Four years of hard study and the anxieties and hopes for the future. College graduates, especially young men in the technical branches, are faced with the uncertainties of both civilian and military life.

For the second time within our generation America is called upon to assume the leadership of free peoples everywhere. America is challenged to mobilize and furnish leadership for industrial supremacy. Development of future talent and leadership in the Materials Handling Equipment Field must come from the young graduates of our Colleges and Universities. Management, seeking new and improved ways to step up production is turning to Materials Handling Equipment to solve vital production problems.

Conveyors — as one of the oldest, yet newest, of production aids — now take on greater importance than ever before to speed up production in industry.

**OPPORTUNITIES IN THE CONVEYOR FIELD
ARE UNLIMITED!**

PALMER-BEE COMPANY

— ENGINEERS — FOUNDERS — MACHINISTS — STEEL FABRICATORS —

WESTMINSTER & G. T. R. R.

DETROIT 12 MICHIGAN

KOESTLIN TOOL & DIE CORP.

Stamping Specialists

NO WORK TOO LARGE



Complete Body Die Facilities



Humboldt and Magnolia Aves.

TA. 5-1490

FALLS SPRING AND WIRE

Division of

STANDARD STEEL SPRING CO.

Springs

8635 Conant Road — Detroit 11, Mich.

Metal Working Machinery

**RIORDAN
MACHINERY
COMPANY**



**213 Curtis Building
Detroit 2**

**It's the Ferguson System
That Makes the Difference!
. . . and Sound Engineering
Played Its Part.**

HARRY FERGUSON, INC.

**3639 E. Milwaukee Ave.
Detroit 11, Michigan**

**Plant:
12601 SOUTHFIELD**

**Ferguson Tractors
and Ferguson System Implements**

**AJAX STEEL &
FORGE CO.**

F O R G I N G



205 Adair

LOrain 7-0755

**SPAULDING ELECTRIC
COMPANY**

Power Apparatus Specialists

**Application — Installation — Maintenance
Repair — Motors — Generators — Transformers
Switchgear — Substations — Speed Reducers
Couplings**

1350 Michigan Ave.

WOODWARD 2-6200

DETROIT 26, MICHIGAN

**Manufacturers
National Bank of Detroit**

•
WOODWARD at MANCHESTER

Highland Park, Michigan

•
Member Federal Deposit Insurance Corporation

**DAVIS TOOL AND
ENGINEERING CO.**

Tools, Dies and Special Machinery

•
DAVIS STAMPING CO.

Sheet Metal Stampings and Assemblies

•
19250 Plymouth Road Detroit 28, Mich.

VERMONT 5-6000

**INDUSTRIAL WIRE
CLOTH PRODUCTS CO.**

Industrial Wire Cloth Products

•
3927 Fourth St.

Wayne, Michigan

**ESSEX WIRE
CORPORATION**

Magnet Wire ★ Automotive Wire
and Cable

•
14310 WOODWARD AVENUE

HIGHLAND PARK

CONGRATULATIONS

J. Alex Gordon & Co.

Materials — Handling Equipment
810 Stephenson Building

Detroit 2, Mich.

TRinity 3-8600

Paul A. Willsie Co.

Academic Costumers

1437 Randolph

WOODward 5-0078

Gregory Mayer & Thom Co.

ENGINEERING SUPPLIES

WOODward 1-9330

41 Cadillac Sq.

DETROIT

CONGRATULATIONS

Hudson Tool & Machine Co.

ROYAL OAK, MICHIGAN

Cadmet Corp.

PRECISION CASTINGS
LOST WAX METHOD

15515 Tuller

Detroit

M. N. Duffy & Co.

RADIO and ELECTRONIC
SUPPLIES

2040 Grand River Avenue

WOODward 3-2270

Compliments of

Lawn Equipment Corp.

518-520 W. ELEVEN MILE RD.

Royal Oak, Mich.

LI. 2-1721

"Everything for the Lawn"

Ask for illustrated Bulletin with interesting
information on many types of
Detroit Electric Hoists

**Detroit
Hoist and Machine Co.**

8201 Morrow St.

Detroit, Mich.

Huron Forge & Machine Co.

DROP FORGINGS

9041 Alpine

Congratulations from

I. T. Wedin Corp.

1221 EAST 8 MILE RD.

Ferndale,

Michigan

Compliments of

Piston Service Co., Inc.

4430 CASS AVE.

Detroit 1,

Michigan

Progressive Industries Co.

MANUFACTURING - PROCESSING AND
DESIGNING OF TOOLS - GAUGES
DIES AND FIXTURES

8770 Linwood

TYler 7-7550

**Detroit Flame Hardening
Company**

Flame Hardening Spot and Surface
Hardening of Iron and Steel Parts,
Gear-Teeth, Rails, Wheels, Cams, Dies
and All Wearing and Cutting Edges.

116 Manchester

TOWNSEND 8-2925

Brooker Electric Co., Inc.

ELECTRICAL CONTRACTORS

962 East Congress Street

DETROIT 7, MICHIGAN

Congratulations to the Graduates and Faculty
of L. I. T. on Their Past Endeavors

Thompson Products, Inc.

CLEVELAND

—:—

DETROIT

"I Want to Be Your Milkman"

**H. A. McDONALD
CREAMERY CO.**

LOCAL — FRIENDLY

Milk — Cream — Ice Cream

TOWNSEND 8-5250

9700 Oakland Avenue

**HIGHLAND PARK
LUMBER CO.**

15853 Hamilton Ave.
HIGHLAND PARK 3, MICHIGAN

W. T. ANDREW CO.
PLUMBING SUPPLIES

15815 Hamilton Avenue
TULSA 3-2000

McINNES DESMOND

--:-- FUNERAL DIRECTORS --:--

TOWNSEND 8-4798
15941 WOODWARD

Best Wishes to
Lawrence Tech Students

MORSE CHAIN CO.

Division of
BORG-WARNER CORP.

**ENTERPRISE
MACHINE PARTS CORP.**

"Tool Makers Since 1920"

Home of
EMPCO PRODUCTS

2731 Jerome TWINBROOK 1-7900

**John E. Green Plumbing &
Heating Co., Inc.**

INDUSTRIAL PIPING — PLUMBING
HEATING

220 Victor — Highland Park
TO. 8-2400

FEDERAL MOGUL CORP.

{ BRONZE }
{ BEARINGS }

11031 Shoemaker WA. 1-0750

The Wayne Way

GOOD PRODUCTS PLUS GOOD SERVICE

Metal Working Lubricants
Rust Preventives
Paste Solders
Chemical Specialties

**Wayne Chemical Products
Company**

Established 1899

Copeland Street & M. C. R. R.
Detroit 17, Michigan

GOOD LUCK
to
LAWRENCE TECH

CHECKER CAB COMPANY

WOODWARD 3-7000
Detroit - - - Michigan

WO. 1-4806

TECLA CO., INC.

Experimental Work

1507 Cass Ave. Detroit 26, Mich.

S. S. KRESGE CO.

14551 WOODWARD

•
5c - 10c and 25c Stores

KEUFFELL & ESSER COMPANY

Est. 1867

Drafting, Reproduction, Surveying
Equipment and Materials

Slide Rules Measuring Tapes

37 W. PALMER

Wayne Oakland Bank

ROYAL OAK HIGHLAND PARK
BERKLEY CLAWSON

Resources Over \$43,000,000.00

Member Federal Deposit Insurance Corporation

UNION TWIST DRILL COMPANY

5527 Woodward Ave.

DETROIT

Tom's Woodward Markets

The Finest Foods at Michigan's
Finest Market

12811 Woodward Avenue, Cor. Glendale

— Convenient Parking —

906 No. Woodward Cor. Catalpa Drive

LIncoln 3-5504

Royal Oak

SMITH, HINCHMAN & GRYLLS, Inc.

ARCHITECTS

•
800 Marquette Bldg.

Detroit, Michigan

Bendix Power Brakes
Truckstell Conversions
Wheelbase Changes
Carburetors — Magnetos
Fuel Pumps — Diesel Injection
Specialized Truck Equipment

Knorr-Maynard, Inc.

5743 Woodward

Congratulation and Best Wishes

Douglas & Lomason Co.

5836 Lincoln Avenue

Detroit 8,

Michigan

HETTCHE MOTOR SALES

FORD SALES — SERVICE

●
2475 West Grand Boulevard

Ecclestone Chemical Co., Inc.

CHEMICALS

Basic and Specialized

For the Manufacturing and Industrial Trade
Large Stocks Carried
Prompt Delivery

The Ecclestone Chemical Co., Inc.

2669-79 Guoin St.

LOrain 7-4650

Efficient Engineering Co.

Registered Professional Engineers

Designers of Products, Tools, Dies, Jigs, Fixtures,
Special Machines, Die Casting and
Plastic Equipment

1040 West Fort

Detroit, Michigan

Paramount Engineering Company

PRODUCT ENGINEERING

Tcol, Die and Special Machine Designers
Wood Patterns and Models

1625 East Grand Blvd.

Detroit 11, Mich.

Michigan Tool Company

CONE DRIVE DIVISION
SPEED REDUCERS — GEAR



7171 East McNichols Rd.

DETROIT, MICH., U. S. A.

Paramount Rubber Co.

Synthetic Rubber and Plastic Engineers
and Manufacturers

10401 NORTHLAWN AVENUE

Telephone WEBster 3-3050

DETROIT 4, MICH.

N. I. TIMCO

Member L. I. T. Alumni



DeLUXE DIE WORKS

20201 Hoover Road

DETROIT, MICHIGAN

STUDENTS

Many members of your alumni, as outstanding American citizens, have set high standards in a profession which has done so much to make this country of ours a world leader.

We need more and more engineers like that who can think straight and act vigorously to keep America the land of opportunity.

You gentlemen have the equipment for that leadership. We are depending on YOU.



NATIONAL BROACH & MACHINE CO.

5600 St. Jean

Detroit, Mich.

ROSS OPERATING VALVE COMPANY

John Sainsbury



120 East Goldengate
DETROIT 3, MICH.

L. J. LORANGER



WISHES YOU SUCCESS

Congratulations on the Growth
of
LAWRENCE TECH

DANLY
Machine Specialties, Inc.

1549 Temple Ave., Detroit, Mich.

DANLY DIE SETS
DIE MARKERS
SUPPLIES

DANLY ADVANCE
DESIGNED
PUNCH PRESSES

**THE MOUNT CLEMENS
METAL PRODUCTS CO.**

•
Production Stampings, Clinch Nut
Assemblies and Metal Specialties
•

145 S. ROSE STREET

Mt. Clemens, Mich.

WALWAY CO.
METAL STAMPINGS



19270 West 8 Mile Road
DETROIT, MICHIGAN, U. S. A.

Compliments of

THE READY-POWER CO.

Manufacturers of

GAS-ELECTRIC POWER UNITS
For Electric Industrial Truck Operation

**READY-POWER ENGINE
GENERATORS**
Dependable, Independent Electric Power
For All Purposes

**READY-POWER ENGINED
REFRIGERATION**
Gasoline, Natural Gas, Butane or Diesel Powered
Air Conditioning or Refrigeration

Plants: 3826 Grand River Avenue
and
11231 Freud Avenue, Detroit

When a Job Calls for Precision, Call for VINCO



GEARS

The ability for achieving accuracies of very high degree has brought Vinco into the field of high quality and commercial gears. Jet engines and radar equipment are two modern developments that require gears accurate in all elements to .0001 or .0002. Vinco-produced commercial gears are more accurate and have a finer finish than generally found in this gear classification. That is why Vinco should be called when good gearing is needed.

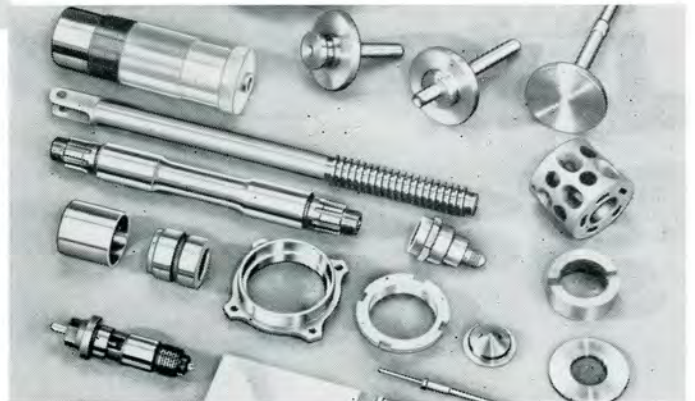


GEAR ROLLING INSPECTION FIXTURES

The fixture, shown at the left, is designed for inspection of gears being made in quantity production. It provides a fast, accurate check of concentricity, backlash, and rolling action. Fixtures are made for external or internal gears and will accommodate any tooth form . . . spur, helical, spiral or worm.

PRECISION PRODUCTION PARTS

This group of precision-machined parts is typical of the wide variety of work produced by Vinco in this field. Machining operations performed on these parts include lathe work, milling, slotting, hobbing, broaching, thread grinding, surface grinding, external grinding, jig grinding and lapping. Much of this work was performed on special equipment designed and made by Vinco.



SPLINE GAGES

Vinco pioneered in the development of spline gaging and created inspection and manufacturing equipment which now makes possible the absolute control of all essential elements of spline gages during production. Vinco is now the accepted leader in the field of spline gages. Their involute, serration and straight sided spline plug and ring gages set the pace for accuracy. That is why men who "know" call Vinco whenever they need spline gages or splined parts.



VINCO CORP. 9111 Schaefer Highway
Detroit 28, Mich.

M I L L I O N T H S O F A N I N C H F O R S A L E

E N G I N E E R S

TO DESIGN IT

E N G I N E E R S

TO TOOL IT

E N G I N E E R S

TO GET PRODUCTION STARTED

E N G I N E E R S

TO MAINTAIN QUALITY AND EFFICIENCY

PIONEER ENGINEERING & MANUFACTURING CO.

ENGINEERS — CONSULTANTS — DESIGNERS — PRODUCTION ENGINEERING SPECIALISTS
TOOLS — DIES — SPECIAL EQUIPMENT

19669 JOHN R

DETROIT 3, MICH.



Tied with a Red, White and Blue Ribbon

You receive it *proudly*, of course.
You've *graduated*. But isn't there a *deeper* reason why you feel your chin go up as you reach for your diploma? Isn't it the fact that you've received it from an *American* school? Where every student has an equal chance not just to "learn"... but to learn undistorted truths? Where every student has an equal right, not just to do "good enough"... but to *excel*... in the classroom, on the athletic field, in activities of all kinds? For that is the strength of America. That is why it is... and will continue to be... a great nation.



THE OHIO OIL COMPANY

Producers of Petroleum since 1887

Shop Equipment of Every Description

Machine Tools
Cutting Tools
Industrial Brushes
Industrial Supplies
Grinding Wheels
Screw Products
Electric Tools
Electric Motors
Abrasives
Drills — Reamers
Taps — Dies
Truck Casters
Fire Extinguishers

Power Transmission Eqpt.
Material Handling Eqpt.
Industrial Safety Eqpt.
Precision Tools
Drop-Forged Tools
Industrial Trucks
Air Control Eqpt.
Gear and Speed Reducers
Hydraulic Power Tools
Wire Rope and Fittings
Home Workshop Eqpt.
Air Compressors
V-Belt Drives

THE CHAS. A. STRELINGER CO.

149 E. Larned St., Detroit 26, Mich. — WO. 2-7474

CHAS. T. BUSH, Pres.

CHARLES E. ALLINGER, Sec'y-Treas.

METROPOLITAN ART STUDIOS

Official Photographers

for the

“L” BOOK

and the

Graduating Class of 1951

SERVICE ENGRAVING COMPANY

Engravers for the “L” Book

FOREST PRINTERS

Printers for the “L” Book

TRIANGLE BOOKBINDING COMPANY

Binders for the “L” Book

BECKTOLD COMPANY of ST. LOUIS, MO.

Cover for the “L” Book

Autographs
