

N



E

LAWRENCE INSTITUTE OF TECHNOLOGY

W

S

Cover Design Stimulus

To depict the administration's intention to relocate L.I.T. at a new campus in 1956, a graphic illustration was conceived for the cover design. A compass, with needle point offset, is intended to symbolize the true northwest position of the new campus.

Presenting

The

1955

L Book

JOHN TURCHAN
EDITOR

BERNARD KNOTEK
BUSINESS MANAGER

RICHARD MITCHELL
ASSOCIATE EDITOR

DEDICATEE



As we all know him . . .

The familiar smile and sincere interest in the welfare of the student will mark the graduates memory of Murrill K. Woolford. His friendly interest in all phases of student activity comprise a major part of the education at Lawrence Institute of Technology.

Mr. Woolford began his career at Lawrence Tech. in 1936 as a part time night-school instructor. A dynamic personality, Mr. Woolford progressed through the stages of being head of the English Department in September 1943, head of testing and guidance in September 1947, to his present position of Assistant Dean.

Mr. Woolford's personal life exemplifies his vitality and interest in just about everything. An Elder in the Presbyterian Church, president of an adult bible class, and chairman of the reception committee for a local lodge are a few of the various activities in which he is engaged aside from his duties at Lawrence Tech. An avid hobbyist, Mr. Woolford has a woodworking shop in his home complete in every detail. Another of his hobbies is traveling. Having toured Mexico and Canada, he hopes to take a trip to Alaska next fall.

Ability to gain a student's confidence almost at sight is one of the remarkable facets of Mr. Woolford's personality.

It serves him well in his public relations work with Michigan high schools and freshman orientation classes.

We the graduates of Lawrence Tech. offer our gratitude for events too innumerable to mention. Perhaps our greatest gratitude takes form in our memories of you, which will always be a part of us. We gratefully dedicate this yearbook to you, Mr. Woolford, a great man and true friend.



MURRILL K. WOOLFORD

As he appears . . . ever so often
to his affectionate Mrs. Woolford.

LAWRENCE INSTITUTE OF TECHNOLOGY

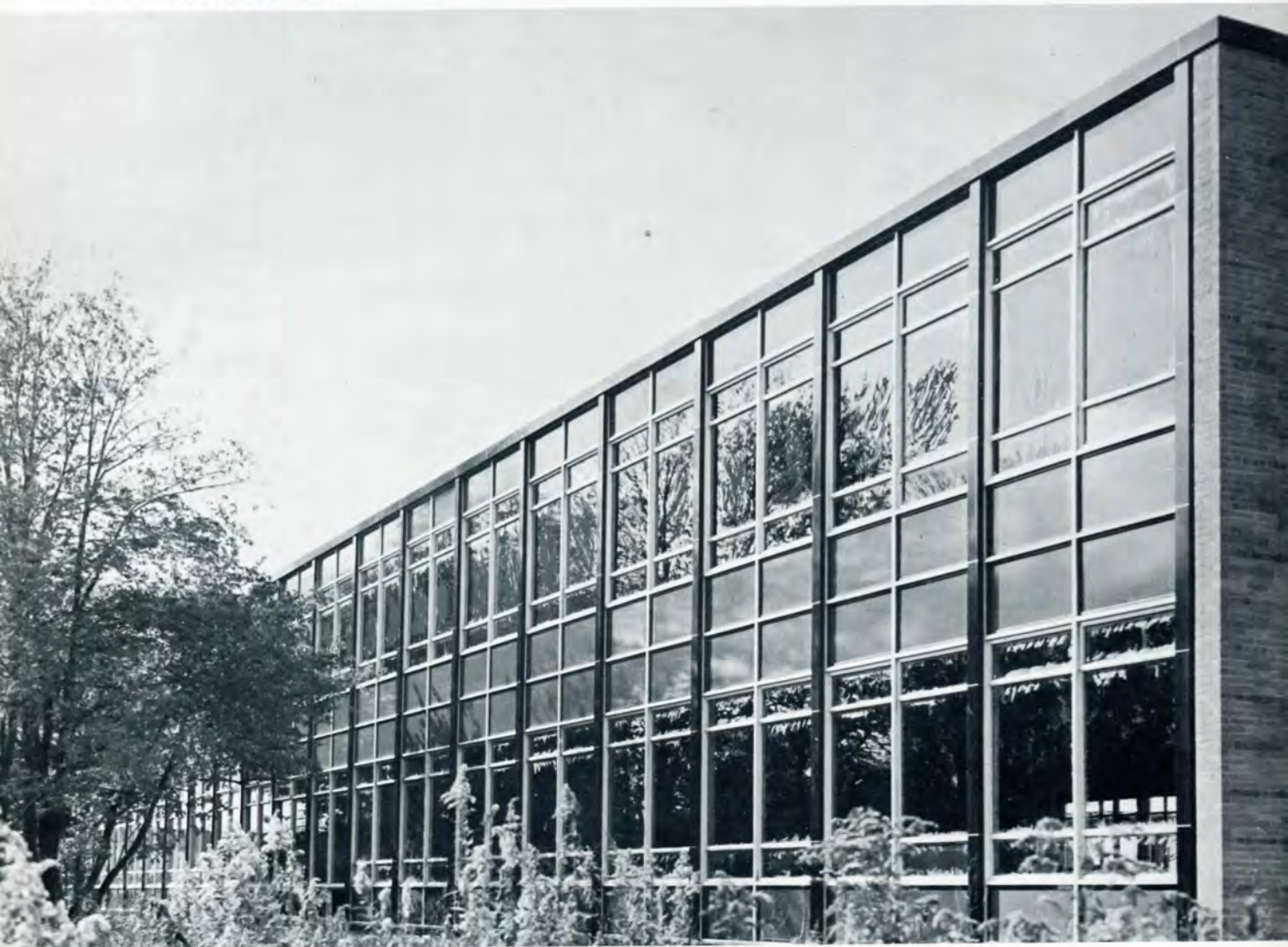


Table of Contents

DEDICATEE	3
FOREWORD	6
FAITH of the ENGINEER	7
MESSAGE to the SENIORS	17
ACADEMIC HEADS	18
CHAIRMEN	20
FACULTY	22
ADMINISTRATORS	26
CANDIDATES FOR DEGREE	31
THEIR FUTURE	50
CLASSES and ORGANIZATIONS	51
SPORTS	89
FRATERNITIES	107
ACKNOWLEDGEMENTS	140



Foreword . . .



Pictured above is a western exposure viewing unit A of the new school.

Progress is more than a mere word. Within its full meaning lies the greatest accomplishments of world history. Without it, all would be futile . . . life indeed would be reduced to a mere shamble . . . nations would become decadent . . . cities would rust and crumble . . .

It is fortunate that within the minds of great men, this word is uppermost in their thoughts. It is more than just thoughts, it is an ever-present challenge . . . the challenge to go on to greater heights, to achieve that which to many seems just beyond reach . . .

We at Lawrence Institute of Technology are fortunate indeed . . . privileged to have within our walls, men of great caliber, men willing to gamble on tomorrow's horizons . . . men who will go and go, that we may learn the full meaning of the word progress . . .

Thus it is with pride that we direct not only our "L-Book," but our entire student body's attention to the community in which we will soon become a part of . . . a community already enhanced by the nationally famous "Northland", by wonderful highways and more to come, with gracious homes of many progressive minded citizens . . .

That we should become a part of this community is an honor . . . an honor that we shall endeavor to have returned to us when we have shown to those who are our new neighbors, the fullness of our being among them. We look forward to the time when we shall hear . . . "You are no longer a portion of this community, but the heart of its wonderful progress . . ."

FAITH OF THE ENGINEER

I AM AN ENGINEER. In my profession I take deep pride, but without vainglory; to it I owe solemn obligations that I am eager to fulfill.

As an Engineer, I will participate in none but honest enterprise. To him that has engaged my services, as employer or client, I will give the utmost of performance and fidelity.

When needed, my skill and knowledge shall be given without reservation for the public good. From special capacity springs the obligation to use it well in the service of humanity; and I accept the challenge that this implies.

Jealous of the high repute of my calling, I will strive to protect the interests and the good name of any engineer that I know to be deserving; but I will not shrink, should duty dictate, from disclosing the truth regarding anyone that, by unscrupulous act, has shown himself unworthy of the profession.

Since the Age of Stone, human progress has been conditioned by the genius of my professional forbears. By them have been rendered usable to mankind Nature's vast resources of material and energy. By them have been vitalized and turned to practical account the principles of science and the revelations of technology. Except for this heritage of accumulated experience, my efforts would be feeble. I dedicate myself to the dissemination of engineering knowledge, and especially to the instruction of younger members of my profession in all its arts and traditions.

To my fellows I pledge, in the same full measure I ask of them, integrity and fair dealing, tolerance and respect, and devotion to the standards and the dignity of our profession; with the consciousness, always, that our special expertness carries with it the obligation to serve humanity with complete sincerity.

Reprinted by courtesy of Engineers' Council for Professional Development

Retrospect 1955

"Technical skill can achieve most any kind of a miracle—whether it be new forms of entertainment or better working conditions. The engineer's work is that of the pioneer. Already he is using that pioneering instinct in business. Soon the technically trained men will take the reins of industry and government."

It was this firm belief in the future of the engineer that motivated Dean Russell Ellsworth Lawrence to found an engineering college in the midst of economic chaos. While less farsighted men came forth with prediction of gloom in 1932, Dean Lawrence began the fulfillment of a dream, to educate engineers as leaders. He did not live to see its completion, as death came two years later. His legacy to the people of Detroit was a rich one, Lawrence Institute of Technology, a gleaming new campus school that has become a reality.

We, the graduating seniors, will not have the opportunity of using the new school. But like Dean Lawrence, we the spirit of LIT will see Lawrence Institute of Technology rise to even greater heights.

As we take our places as men in the world, our heart felt gratitude extends to the man whose undying faith and courage in the face of seemingly insurmountable obstacles made it possible.



DEAN RUSSELL ELLSWORTH LAWRENCE
Founder
1889 - 1934

Vicissitude of Locality

The students of Lawrence Institute of Technology, during the fall term of 1955, will attend classes in a magnificently new building.

A new school is more than merely a new building. It is a visage of future greatness.

Prospective engineering students will view the new building as a concrete example of the school's progressive ability. As future graduates, they will benefit greatly by the prestige of the superbly new educational institution that Lawrence Institute of Technology has become.

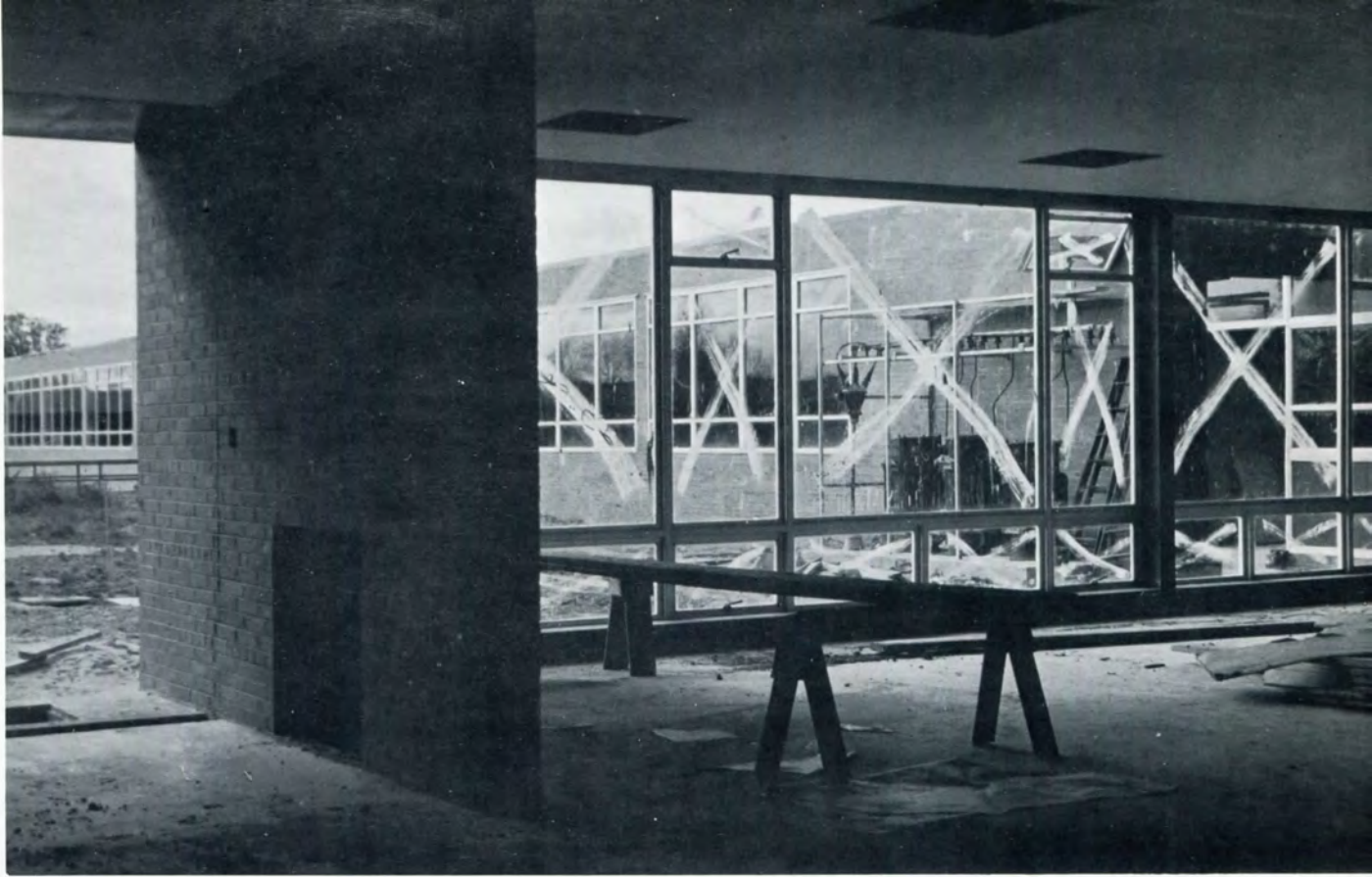
The graduate of past years will sense a feeling of pride and accomplishment in the growth of his Alma Mater.



Retrospect (continued)



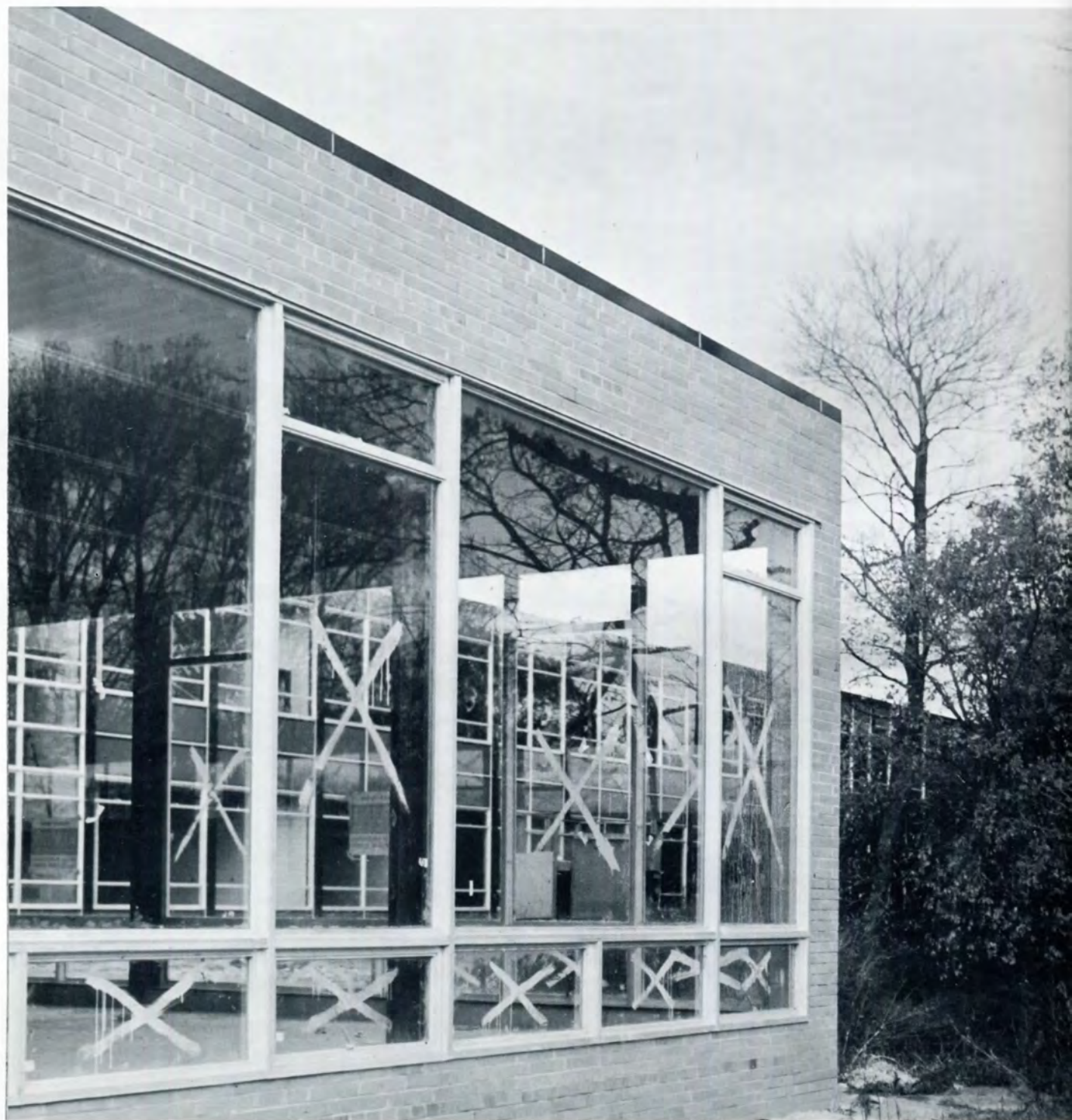
... An exterior scene as viewed from unit A in the midst of winter.



Pictured above is the proposed student lounge area in unit B of the new school. The classroom atmosphere, in unit A pictured below, is enhanced by the marvelous view of the countryside.



Retrospect (continued)



A corner view of the cafeteria with unit A to the rear, and a wooded ravine to the right.



The cafeteria, unit B, is shown above. A composite picture of the partially completed units of the new school is shown below.



Retrospect (continued)

NORTHLAND

Situated at Northwestern and Eight Mile Road is Northland. This sprawling shopping center occupies the land which Lawrence Institute of Technology had originally planned to use as its new campus site, however, the location was later changed and now occupies a tract of land bordering Northwestern and Ten Mile Road.

Now it is possible for residents of Northwest Detroit and surrounding suburbs to shop in leisure amid well planned retail variety stores.

With the construction of Lawrence Institute of Technology and Northland in this area, it is foreseen that the two, both unique in their respective fields, will set the pattern for future communities.

Parking lot area and main entrance to Hudson's Northland is pictured below.





The example of contemporary design, above, and the graciously landscaped flower garden, below, enhances the appearance of the variety stores on the south concourse.





President

E. G. LAWRENCE

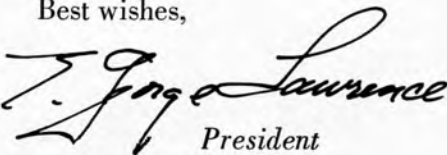
Dear Graduates of '55:

You have the distinction of being the last graduating class in the original building of our College. Yours will be the memory of ivy-covered walls and dusty, well-used classrooms and laboratories which have housed all of your alumni predecessors. As we walk through these ancient halls we see signs of many graduates: the carved initials of a man who didn't come home from Iwo Jima; the "temporary" partition, fifteen years of age, which a top engineer of one of America's greatest corporations, helped to build as a student working his way through Tech. Yes, there are signs everywhere of men we have worked with and of men whose friendships are dear to us.

Yours is the responsibility of keeping alive the traditions of our college—not only those which are enjoyable, but also the traditions of hard work and conscientious study which have always marked the L.I.T. man. These traditions must be transplanted to our new campus. By your example, through fraternal and social associations with undergraduates of the future, you can and you will make this vital transition of the L.I.T. tradition a reality.

We hope you will come to feel in your hearts that the new campus is your Alma Mater. Be sure to visit your old college friends in their new surroundings at every opportunity. They will be happy to see you.

Best wishes,



J. J. Lawrence
President

Message to Seniors . . .

Academic Heads



Doctor EDWIN O. GRAEFFE, Dean of Day School

Doctor Graeffe has been with Lawrence Institute of Technology since its beginning in 1932. He was one of the three associates who joined Dean Russell E. Lawrence in the venture of founding an engineering college.

During the early days of the school, Doctor Graeffe, in addition to teaching, found himself involved in such various duties, as working in the book store, counseling students, and coaching the fencing team. Doctor Graeffe has since devoted himself to teaching and administrative duties.

During the forthcoming fall term at the new campus, his duties as dean of day school will be greatly intensified, as the day school facilities are to be greatly expanded. Nevertheless, Doctor Graeffe will continue teaching, believing a dean should keep in close contact with the student.

A magnificent speaker, scholar, and world traveler, Doctor Graeffe has enthralled students with his lectures for years.

He plans to travel throughout Europe with his family this summer.

HANS G. ERNEMAN, Dean of Night School

Professor Erneman came to Lawrence Institute of Technology in 1941, as an instructor in the Mechanical Engineering Department. In 1944 he became assistant head of the Department, and head of the Department in 1945. In the fall of 1953 he became Dean of Night School.

Professor Erneman typifies the engineer. As a graduate of the Technical University of Berlin, he possesses a remarkable knowledge of his profession. This capacity of judging soundly and dealing broadly with facts has permitted him to become an accomplished instructor in both the analytical and practical aspects of engineering.

In teaching, Professor Erneman employs a combination of logic, rollicking good humor, and a vigorous personality to accentuate his daily lectures. At present, Professor Erneman is correlating the laboratory installation at the new school. Great effort is being placed in improving the laboratory facilities of the new campus. Foreseeing the trend toward the gas turbine in future power development, Professor Erneman is guiding the new Mechanical engineering installation in this direction.

MORDICA M. RYAN, Director of Technical Institute

Professor Ryan became a member of the faculty of Lawrence Institute of Technology in 1945. In 1952 Professor Ryan left Lawrence Tech. for a two-year period to accept a position as chief chemist for the Kaiser Engine division. In 1954 he returned to Lawrence Tech. in a new capacity—Director of the Technical Institute.

As Director of the Institute, Professor Ryan arranged the curricula for the various programs offered and supervised their presentation. In this capacity he keeps in close contact with both high schools and industry. In his relationships with high schools, Professor Ryan counsels both college and institute students. As head of the institute he must anticipate the future needs of industry and provide the training facilities called for. In addition he keeps industry informed of the availability of prospective institute graduates.

We the graduates of 1955 remember Professor Ryan as our chemistry instructor, being one of the last fortunate classes to have him serve in this capacity. One of the finest instructors ever to teach at Lawrence Tech., Professor Ryan always enjoyed the respect and admiration of his students. Sincere, conscientious, these qualities that endeared him to us as a teacher serve him and in good stead as Director of the Technical Institute.

Department Chairmen

The faculty of Lawrence Institute of Technology is composed of full-time and part-time teachers. The basis for the selection of this faculty is three-fold. Consideration is given to the academic preparation of the teacher, his knowledge of the relationship of his work to industrial practices, and his previous teaching experience. Many of the part-time instructors in the evening program are drawn from local industries where they apply on their daily job the knowledge and techniques they teach in their classes at Lawrence Institute of Technology. This not only keeps the content of the various courses practical and up-to-date, but also gives the students an opportunity to get acquainted with the kind of persons who will be their future co-workers and supervisors. It is with this basic forethought that the department chairmen supervise the activity of each department.

PROFESSOR EARL W. PELLERIN
Architectural Engineering



PROFESSOR ELWYN D. HANCOCK
Electrical Engineering



PROFESSOR WILLIAM F. S. DOWLDING
Industrial Engineering





PROFESSOR HENRY W. NACE
Mathematics



PROFESSOR WILLIAM E. MENZEL
Civil Engineering



PROFESSOR GAIL P. BREWINGTON
Physics



PROFESSOR HAROLD C. BOOTHROYD
Chemistry



PROFESSOR JOHN S. RACKWAY
Engineering Drawing



PROFESSOR HERBERT G. WILLIAMS
English

Faculty

GEORGE G. ALLISON
Mechanical Drawing



GEORGE R. BINGHAM
Civil Engineering

ARNOLD J. BLYTHE
Social Sciences



HAROLD C. BOOTHROYD
Chemistry

GEORGE F. BUTTS
Mechanical Engineering





GEORGE H. CLARK
Air Conditioning



ROGER H. COMPTON
Electrical Engineering



EDMUND J. DOMBROWSKI
Chemical Engineering



GEORGE E. DUMAS
Electrical Engineering



GEORGE W. GIBSON, JR.
Electrical Engineering



JAMES B. HUGHES
Architecture

ROBERT J. KAMPHAUS
Chemistry

WILLARD O. KEIGHTLEY
Civil Engineering



EUGENE A. KIFFNER
Mechanical Engineering

G. HARVEY KNIPPLE
Physics



IRVING J. LEVINSON
Mechanical Engineering

JOHN L. SAFFER
Mechanical Engineering





ROY W. SCHENKEL
Mathematics



GEORGE W. SIERANT
Mechanical Engineering



FRANK J. ULLRICH
Industrial Engineering



CHARLES VRANIAN
Mechanical Engineering



JOHN L. WALKER
Mechanical Engineering



HURST E. J. WULF
Mathematics



JAMES W. HOBSON
Business Manager

Administrators & Staff

MURRILL K. WOOLFORD
Assistant Dean

GENEVIEVE G. DOOLEY
Registrar





HAROLD B. VANBUSSUM
Personnel Director



DONALD G. RIDLER
Director of Student Activities

WILLIAM BURKE
Director of Veterans Affairs

EDWARD JOSITAS
Director of Student Placement



Administrators & Staff (Continued)



MICHAEL L. MITCHELL
Controller



VIRGINIA LUCIK
Office Manager



CLAUDE BREAM
Auditor



MARION ROGERS
Bursar



JEANNE PRESTON
I.B.M.



MARY C. LANDUYT
Librarian



HELEN M. COOPER
Assistant Librarian



ETHYL LIGHTNER
Duplicating



JOSEPHINE SHOOP
Athletic Office



MARGARET R. DALE
Receptionist

Presenting



Candidates for Degrees

College of Engineering

Upon completion of the required subjects the following men will be eligible for a Bachelor of Science degree in Industrial Management or one of the following fields of engineering; Architectural, Civil, Industrial, Chemical, Electrical, and Mechanical Engineering. A complete listing of each individual's extra curricular activities is included with his course of major study.



ABT, REED, B.S.C.E.



ALVERSON, RICHARD T., B.S.Ar.E.
Alpha Gamma Upsilon
Architectural Club



AGY, WILLIAM, B.S.I.E.
Phi Kappa Upsilon



AUER, RICHARD A., B.S.M.E.
Kappa Phi Sigma

BAGANZ, THERON, B.S.I.E.



BONUCCHI, DARIO, B.S.Ar.E.
Architectural Club

BOROWICZ, MITCHELL



BOSETTI, EUGENE, B.S.E.E.

BROWN, ROBERT E., B.S.M.E.



BROWN, ROGER C., B.S.M.E.
Kappa Sigma Kappa
S.A.E., Secretary '52
S.A.E., President '53

BRYANT, ALFRED T., B.S.M.E.



BURKS, THOMAS H., B.S.E.E.





CHIKOS, FRANK, B.S.M.E.



CHRISTO, CHRIST, B.S.M.E.
Kappa Sigma Kappa
Lambda Iota Tau
S.A.E.



CISLO, JEROME J., B.S.M.E.
Rho Delta Phi
Camera Club
S.A.E.



COBB, SIDNEY, B.S.Ar.E.
Architectural Club



COOK, JEAN R., B.S.Ar.E.



DANCEY, DONALD W., B.S.M.E.
Kappa Phi Sigma
Sophomore Secretary-Treasurer
Junior Secretary-Treasurer
Senior Secretary-Treasurer
Math Club
S.A.E.



DERECKI, JOHN A., B.S.C.E.



DIETZ, MELVIN, B.S.E.E.

DONALDSON, GEORGE, B.S.

DOWNING, ROBERT W., B.S.E.E.



DUNTZ, HAROLD H., B.S.E.E.
Kappa Phi Sigma, Pledgemaster
Tech News, Assistant Editor
Tech News, Reporter
Math Club
S.A.E.

DUTZY, EUGENE J., B.S.I.E.



DZENDEL, GEORGE, B.S.E.E.
Kappa Sigma Kappa

EASTMAN, JOSEPH P., B.S.M.E.



FALENDYSZ, EUGENE L., B.S.M.E.
Kappa Sigma Kappa
Tech News, Circulation Manager

FERRERO, HARVEY, B.S.Ar.E.
Architectural Club, Vice-President





FOSTER, VINCENT W., B.S.M.E.
 Kappa Phi Sigma, Council
 Representative
 Lambda Iota Tau, Chairman Awards
 Committee
 Senior Class President
 Math Club, President
 Tech News, Business Manager,
 Reporter
 Student Council Delegate at Large

FRANCZAK, STANLEY P., B.S.M.E.



GAUTHIER, DONALD E., B.S.M.E.
 L-Book, Fraternity Editor '55
 S.A.E.

GIUDICI, PETER C., B.S.E.E.
 Kappa Sigma Kappa, President,
 Sergeant-at-Arms
 S.A.E.



GROGAN, WILLIAM, B.S.I.M.

GUTHRIE, LEROY C., B.S.M.E.



HEINS, EDWARD J., B.S.C.E.

HERBY, DONALD, B.S.I.M.
 Kappa Sigma Kappa, Chaplain
 S.A.M.
 Tech News

HERLDT, HENRY B., B.S.I.E.

HOUSER, F. H., B.S.M.E.

Rho Delta Phi
RDP, President '53
RDP, Secretary '51
RDP, Treasurer '52
Vice-President, Sophomore Class
S.A.E.
Student Council



HOWES, FREDERICK C., B.S.E.E.

Kappa Sigma Kappa
S.A.E.

HUNLEY, WILLIAM LEIGHTON,
B.S.E.E.

Kappa Sigma Kappa, Treasurer '54
Tech News, Circulation
Radio Club '52



HYSEN, TED, B.S.M.E.

Kappa Sigma Kappa

JANKOWSKI, ARTHUR, B.S.I.M.

Basketball



KASPERS, CONRAD, B.S.M.E.

Kappa Phi Sigma, Vice-President
S.A.E.

KELCHNER, JAMES C., B.S.M.E.





KING, LUTHER S., B.S.I.E.
Basketball

KLINE, BRUCE M., B.S.I.M.
S.A.M.



KNIGHT, GORDON G., B.S.C.E.
Civil Club, Secretary '51

KNIGHTON, CHARLES L., B.S.M.E.
Sophomore Class Secretary '50



KNOTEK, BERNARD F., B.S.M.E.
L-Book, Business Manager '55
S.A.E.

KOCOL, LEON P., B.S.M.E.



KOHL, LEON, B.S.Ar.E.
Kappa Phi Sigma
Student Council, Treasurer '55
Architectural Club, Representative
to Student Council '54
Architectural Club, President '55

KOVAC, NICHOLAS P., B.S.M.E.

KRAMER, JACK M., B.S.M.E.

KUBISKE, EDWARD, B.S.C.E.



LEPRI, LOUIS, B.S.M.E.

LEVULIS, RAYMOND J., B.S.I.E.
Kappa Sigma Kappa, Secretary '54,
Vice-President '55
Junior Class President '54



LICHTENHELD, ROBERT, B.S.Ch.E.

LIGNOWSKI, CASMIR, B.S.I.M.
S.A.M.



LISHOCK, WALTER JAMES, B.S.E.E.

LOGAN, ROBERT, B.S.C.E.





LOIZOS, GUST C., B.S.I.M.
Kappa Sigma Kappa

LONERGAN, GERALD, B.S.C.E.
Phi Kappa Upsilon



MACLEAN, RODNEY M., B.S.I.E.

MARSHMAN, MAX, B.S.M.E.



McINTYRE, GILBERT N., B.S.M.E.
S.A.E.
Bowling Team

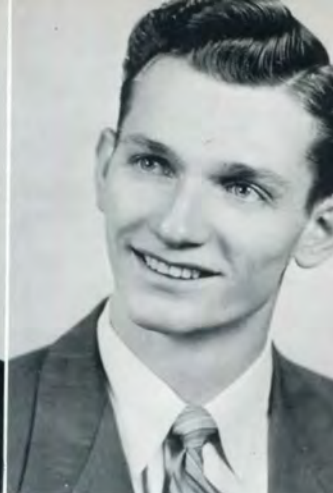
MEEKS, NORTON L., B.S.I.M.
Rho Delta Phi, Sergeant-at-Arms



MERCURE, ROBERT A., B.S.M.E.

MITCHELL, RICHARD G., B.S.I.E.
Rho Delta Phi, President, Social
Chairman
S.A.M.
S.A.E.
Tech News Reporter
L-Book, Associate Editor
I.F.C., Chairman

MOHR, CARL E., B.S.M.E.
S.A.E.



MUHLING, SAMUEL G., B.S.M.E.
S.A.E.
Match Club

NEWTON, RICHARD, B.S.E.E.



NOBLE, MASON A., B.S.E.E.
Rho Delta Phi
Sophomore Class Vice-President
S.A.E.
Lambda Iota Tau

NOLAN, JEROME, B.S.I.E.



NOWAK, RICHARD, B.S.C.E.

OLSON, ALBERT, B.S.M.E.
Rho Delta Phi



PACK, NEVILLE M., B.S.M.E.
Kappa Sigma Kappa
I.F.C., Chairman '53
Student Council, Vice-President '54,
Judicial Chairman '53
Tech News, Fraternity Editor '54
S.A.E.



PATTERSON, VAUGHN, B.S.M.E.
 Phi Kappa Upsilon, Secretary '54
 S.A.E., Student Council
 Representative '53
 S.A.E., Treasurer '53
 Freshman Secretary-Treasurer '52
 I.F.C.
 Tech News, Reporter '53

PAYNE, DONALD G., B.S.I.M.
 S.A.M., Treasurer
 Camera Club



PICKETT, DAVID A., B.S.M.E.
 Kappa Phi Sigma, Pledgemaster '52,
 '53, President '54
 Student Council '54
 S.A.E.

PODNAR, LAWRENCE E., B.S.M.E.
 S.A.E.



POPENAS, MICHAEL, B.S.E.E.

RADULOVICH, SAM, B.S.E.E.
 Phi Kappa Upsilon
 I.F.C.
 S.A.E.



REITZEL, E. DAVID, B.S.Ar.E.
 Kappa Phi Sigma
 Architectural Club

SAMBROOK, RODNEY E., B.S.I.E.
 Rho Delta Phi, Secretary '53
 Tennis Team, Captain '52-'55

SCHWANKE, WILLIAM, B.S.M.E.

SEMERJIAN, HARRY, B.S.M.E.
S.A.E.



SMITH, DONALD J., B.S.E.E.

SOKOLOWSKI, HENRY, B.S.C.E.



STANESA, ELI, B.S.I.E.

Rho Delta Phi, Treasurer '51

STEPANSKI, JOHN, B.S.Ch.E.



STIELER, CARL F., B.S.M.E.

TAKALA, T. THOMAS, B.S.C.E.





TASSON, BRUNO, B.S.E.E.

TIMLIN, JOSEPH R., B.S.I.M.
S.A.M.
S.A.E.



TURCHAN, JOHN A., B.S.E.E.
Rho Delta Phi, President '55,
Vice-President '54, Student
Council Representative '54
Tech News, Reporter
L-Book, Editor '55
L-Book, Feature Editor '53
S.A.E.
Student Council

UHLAR, JOSEPH J., B.S.M.E.
L-Book, Editorial Assistant '55



VARGA, THOMAS, B.S.E.E.

WAGNER, ROBERT CLARENCE,
B.S.M.E.



WALTER, WILLIAM, B.S.I.M.

WEBER, DONALD E., B.S.Ar.E.
Kappa Phi Sigma
Architectural Club, Treasurer '55

WERKEMA, MILTON J., B.S.Ch.E.
Student Council
L-Book, Copy Editor
Tech News, News Editor '54
Tech News, Editor in Chief '55
American Chemical Society



WILLUWEIT, WILLIAM, B.S.E.E.

ZANDER, RICHARD E., B.S.Ar.E.
Architectural Club



ZAJAC, FREDERICK, B.S.I.E.
President (night) '55
Basketball '46

ZIEHM, RAYMOND G., B.S.M.E.
Alpha Gamma Upsilon
S.A.E.



ZUHLKE, DAVID F., B.S.M.E.
S.A.E.

The Technical Institute

The Technical Institute offers specialized, intensive programs of study designed to meet the demand for technically trained persons. Graduates receive an Associate Engineering diploma which qualifies them as detailers, foreman trainees, junior time-study engineers, sample checkers, estimators, job analysts, architectural draftsmen, building inspectors, tool and die designers, technical salesmen, and similar kinds of trained engineering technicians.



ALBERTS, RICHARD J., A.E.E.E.T.

BANASIK, JOHN M., A.E.P.T.D.T.



BRAUN, JOHN, A.E.A.C.R.T.

CHAMPINE, BERNARD J., A.R.M.T.

COTTER, GEORGE L., A.E.E.E.T.

DeSANTIS, SAM, A.E.B.C.



FIELEK, WALTER J., A.M.E.T.

GRIFFIN, RAY M., A.E.A.T.



HAZEN, RALPH, A.E.A.T.

MacKENZIE, BRUCE, A.E.E.E.T.



MALOUF, JOSEPH N., A.E.B.C.

McMILLAN, DONALD ROY,
A.E.A.C.R.T.





McQUILLEN, JAMES, A.E.M.T.

MILLER, RICHARD E., A.E.M.T.



MONROE, DAVID, A.E.M.T.

MURZEN, STANLEY, A.E.A.C.R.T.



NICHOLS, LEMIAL DEVOE,
A.E.A.C.R.T.

NIMLIN, SAMUEL, A.E.M.T.



PAPAS, EDWARD E., A.E.I.S.T.

PAGANO, MARIO MARCO,
A.E.A.C.R.T.

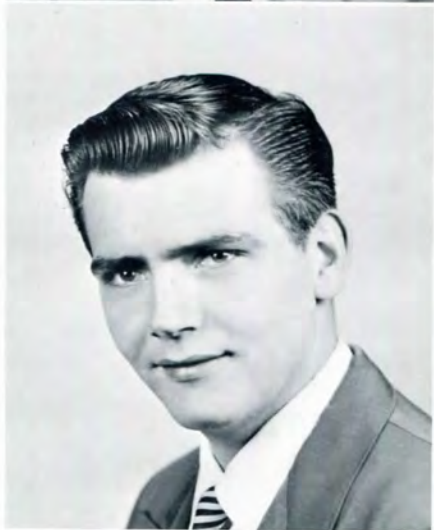
REID, KLYCE WAYNE, A.E.I.S.T.
SAVAGE, AUGUST P., A.E.A.C.R.T



SCHELHAAS, MARTIN, A.M.E.T.
STAIF, NASEEF, A.E.P.T.D.T.



STRONG, DONALD, A.E.E.E.T.
THINSCHMIDT, ALFRED, A.E.M.T.



WARNER, RAY J., A.E.M.T.
WEXEL, CARL J., A.E.M.T.





THEIR FUTURE

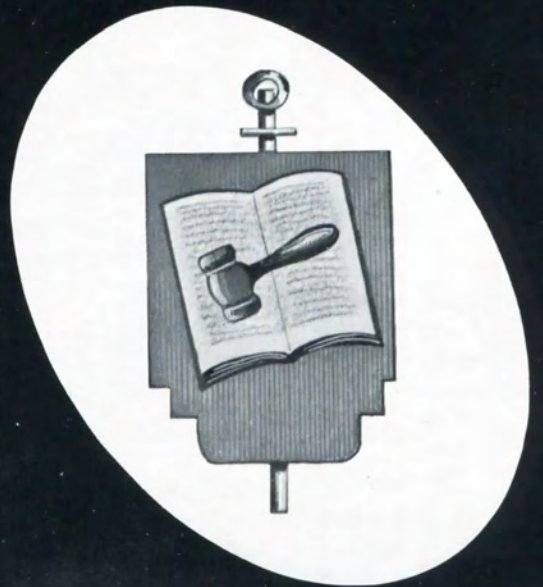
The graduates of 1955 will soon be asked to take their places in the world. What shall be their destiny?

These men of tomorrow must now imprint upon society the value of their past four years of education. Although for most, the years of formal education have come to an end, they realize that the search for knowledge never ends. Each individual in order to provide or improve theories in his chosen field must begin his real education. The education that only life and experience can give, for knowledge alone does not constitute wisdom.

It is an uncertain era that these men are entering, but surely an era that can be the greatest in our country's history. It is these graduates and others like them who must look to the future. The engineer, whatever his respective field, possesses great potential for improving the lives of his fellow men. Civilization is never ending progress. We see it everywhere. In our schools, our bridges, technical advancements, etc. It is the future work of these graduates to ensure this continuation of progress.

As these men leave the comparative tranquility of L.I.T. for the fiercely competitive world, they carry with them the knowledge that they have been more than adequately prepared. Their confidence in their school has been transmitted to confidence in themselves, the basis of success. Knowledge, confidence, faith, and time will prove their destiny.

Presenting



Classes and Organizations

Seniors



Left to Right: Milton Werkema, Vice President; Vincent Foster, President; Donald Dancy, Secretary-Treasurer.

OFFICERS - DAY SCHOOL

M. E. LABORATORY

A four cycle, four cylinder, twenty horsepower, 5700 rpm, internal combustion engine proved to be quite a problem for the second term seniors.



Left to Right: Professor I. Levinson, N. Pack, F. Houser, T. Hysen, Q. Nowicki, J. Kramer, V. Foster, A. Olson, H. Semerjian, D. Pickett, G. McIntyre, L. Podnar, D. Gauthier, S. Muhling.

Seniors (continued)

RADIO LABORATORY

Standing from left to right are William Hunley, Thomas Burks, Harold Duntz, Eugene Bosetti, James Pavlak, George Dzendzel, and John Turchan. Seated are Melvin Dietz and Peter Giudici, Jr.





Left to Right: N. Pack, M. Marshman, C. Stieler, T. Hysen, R. Mercure, D. Zuhlke, A. Olson, E. Falendysz, J. Kramer, L. Podnar, D. Gauthier.



A JOB WELL DONE

During the second term, the seniors studying Mechanical Engineering developed and constructed a heat treat oven under the close supervision of Professor Levinson. The combined efforts of the class are to be commended.

Seniors (continued)



Intermingled with the lower classmen are a few seniors during the hasty noon lunch hour.



Next stop, Lawrence Tech. The carborundum mobil abrasive workshop gave a magnificent exhibition on January 13th and 14th. Coated abrasives and their industrial usage was the primary topic of discussion during their transcontinental tour of the United States.



Seniors (continued)

SENIOR STAG

Entertainment was provided by the "EXLAX KIDS", alias Max Marshman and Roger Brown.





Senior Stag

On April 21, 1955, the annual Senior Stag was held at Buckingham Hall on Harper avenue in the city of Detroit.

Everyone enjoyed a very delicious roast beef dinner.

Entertainment was provided by the Exlax Kids. A picture of the group appears on the opposite page illustrating perfectly to what degree they had prepared their southern folk songs. Mr. Wulf, a member of the school faculty, also entertained by telling a few interesting stories. One of which explained how to improve the growing of pineapples.

After dinner, the men found themselves quite engrossed in the variety of card games.

Juniors



Left to Right: Donald Leonard, Vice President; Thomas Braun, President; William Doty, Secretary; Joe Fleshner, Treasurer (not shown).

OFFICERS - DAY SCHOOL



In order to facilitate correct procedure, Professor Hancock is making final adjustments on the electrical panel for his Junior class students.



With the correction made, the students proceed to perform the experiment.

Juniors (continued)

J-PROM

One of the most popular social events of the year is the J-Prom sponsored by the junior class.

Faced with the decision on the part of the school administration to perhaps cancel this event due to repeated financial loss, a meeting was held at which an extremely earnest endeavor was guaranteed to insure success. With the results of this meeting presented to the administration, a green light was given for the preparation of the J-Prom. Very quickly the wheels of operation began to produce. Tickets were printed; a band and location secured immediately. A large advertising poster was prepared. It read J-Prom, Saturday, April 2, music by Fred Netting and his orchestra, semi-formal, Veterans Memorial Building. For several weeks this large poster occupied a position opposite the main entrance.

When the activity had subsided, a profit was recorded as expected by the juniors.





J-PROM

Some of the crowd . . .

The happy couples . . .

Intermission for the men . . .

Sophomores



Left to Right Sitting: Jerry Klees, Vice President; Dennis Fitzsimons, President. Standing are Eric Gengenbach, Treasurer; Earl Ritenour, Secretary.

OFFICERS - DAY SCHOOL

PHYSICS LABORATORY



COEFFICIENT OF HEAT CONDUCTIVITY EXPERIMENT

Sophomores (continued)

FROSH FLING

Under the excellent orchestration of Don Pablo, a pleasant evening was enjoyed by all who attended the Frosh Fling at the Masonic Temple.

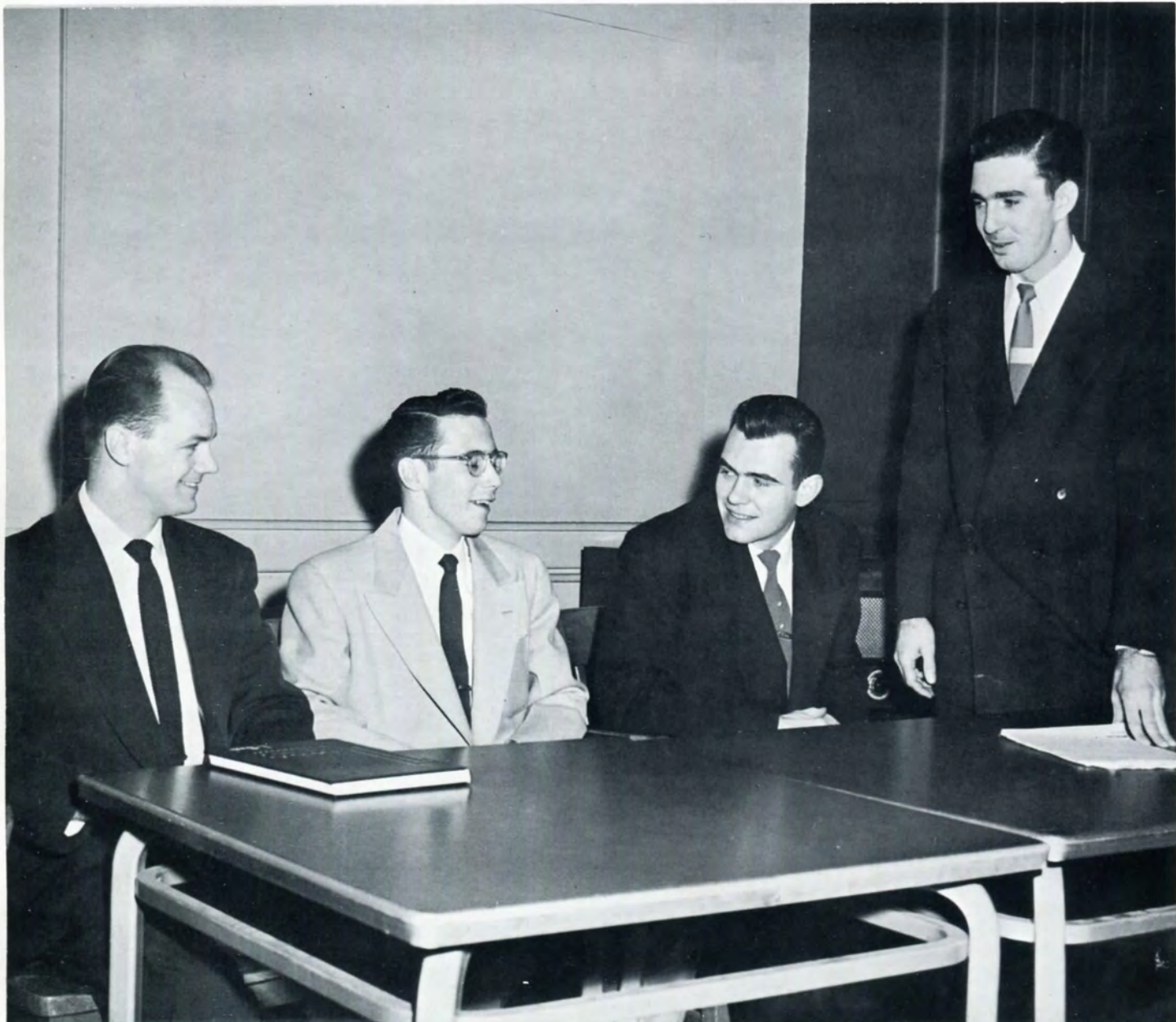
Sponsorship of the dance, by tradition, was in the capable hands of the sophomore class. Their success in producing a profit for this type of engagement has not been equaled for some time. As a result, congratulations are extended to the class.





May I have this dance? A popular refrain spoken at the annual Frosh Fling.

Freshmen



Left to Right: Marvin Hofmann, Secretary; James R. Judge, President; James A. Parker, Vice President; F. Thomas O'Toole, Treasurer.

OFFICERS - DAY SCHOOL

HELL WEEK



Freshman! You look a bit pale, a little makeup will improve your disposition greatly.

Freshmen (continued)



Well freshmen, shall we take a ride into town . . . below . . . step lively! head up! chest out!





My! What an arrogant group of freshmen.

The Student Council



Officers standing left to right are L. Kohls, Treasurer; H. Nace, Faculty Advisor; J. Kourtjian, Chairman of the Election Committee; K. Bratt, Recording Secretary. Seated are R. Marshall, Corresponding Secretary; D. McKinley, President; N. Pack, Vice President; W. Doty, Judicial Chairman.

AS QUOTED FROM THE CONSTITUTION

PREAMBLE

We, the students of Lawrence Institute of Technology, realizing that a sound system of student government will best serve the interests of all concerned, do hereby adopt these means to provide for the exchange of opinions and ideas, and to govern ourselves both as individuals and as groups or organizations, for the mutual benefit of ourselves and the college.

PURPOSE

The purpose of this organization shall be to provide a group that will be truly representative of the student body and of the established organizations in the school. It shall further provide a means of expression for the opinions of all members of the Council on behalf of their organizations towards the goal of self-government. The Council shall initiate any action or activity deemed necessary for the attainment of these purposes.



Leon Kohls, during the regular meeting of the student council, gave the financial statement along with other pertinent information. Below, Edith Mogridge proves to be in good spirits rather than in her usual campaign for the extraordinary.



Architectural Club



Left to right: E. David Reitzel, Secretary; Harvey Ferrero, Vice President; Leon Kohls, President; Bruce Boore, Acting Chairman; Donald Weber, Treasurer.

The Architectural Club was founded for the purpose of increasing interest in architecture by providing extra-curricular activities for the student. The Club is a junior chapter of the American Institute of Architecture, and all members are entitled to its benefits. Many lectures, by world renown architects, are sponsored each year by the A.I.A., as well as banquets and business meetings promoting the advancement of the profession.

Early in the school year the Club sponsored a field trip to Midland, Michigan, the

work site of Alden Dow. This was followed shortly by a guided tour of the General Motors Technical Center, designed by Eero Saarinen. During the winter months, two meetings, featuring lectures and slides on recent developments were held.

With the coming of spring an extended tour of the world famous Taliesin North, the home of Frank Lloyd Wright, was organized. At the end of the year a banquet in honor of the seniors was held, which terminated activities for the season.

Society for Advancement of Management



Chairmen seated left to right are Roger Mullin, Donald Payne. Standing are William Dowling, Robert Hamilton, and William Walter.

The individual member of SAM is presented with the opportunity for well rounded development in the field of management, not only by taking what the Society has to offer, but also by contributing his own ideas. Through the media of publications, meetings, and personal contact with other members, he is able to acquire a vast amount of the newest information concerning techniques, procedures, methods. Through writing, speaking, and round table discussions, he is able to express himself. Through the constant development of his management philosophy as he progresses in his profession, he becomes equipped to aid in the improvement of relations with other managers and executives within and outside of his own organization. All of these enhance the broadening of his outlook, the reliability of his judgment and the quickening of his personal accomplishment, as well as enable him to enrich himself through new friendships, prestige, and opportunity.

Society of Automotive Engineers



Left to Right sitting: M. Katzman, Vice President; Doctor G. P. Brewington, Faculty Advisor; G. Brines, President.

Left to right standing: G. Andersen, Secretary-Treasurer; W. Levon, Student Council Representative.

On April 11, 1947, the Lawrence Institute of Technology Student Branch of the Society of Automotive Engineers was chartered. This society is an organization whose object is to promote the Arts and Sciences, Standards, and Engineering Practices connected with the design, construction, and utilization of automotive apparatus.

As a member of the Student Branch, the engineering student may attend the regular meetings of the Detroit Section of the S.A.E. and become familiar with the recent advances in engineering techniques, while hearing many of the country's top engineers. Included in the Student Membership is a year subscription to the S.A.E. Journal, which contains technical reports on the improvements and developments in all phases of engineering.

Each year the Detroit Section of the Society promotes a field trip to which all student members are invited. Scene of the 1955 trip was the United States Rubber Company. The field trip included a plant tour, dinner, and a talk on high speed tires. Films and slides on the subject were also shown.

A Student Branch is established with the purpose of acquainting student members with the many facets of engineering. This purpose is fulfilled by regular Section meetings and the S.A.E. Journal in conjunction with meetings of the Student Branch itself.

Inter-Fraternity Council



Seated from left to right are Richard Mitchell, representative of Rho Delta Phi and chairman of the council for the year 1955; Allen Patterson, representative of Phi Kappa Upsilon. Standing are Hal Duntz, representative of Kappa Phi Sigma; Donald Herby, representative of Kappa Sigma Kappa.

Realizing that all the fraternities on campus were basically formed for the betterment of high ideals at Lawrence Tech. A council composed of representatives from the five fraternities was formed to correlate certain activities and interests for their mutual benefit.

One of the primary functions of the council is to screen all pledge candidates for scholarship requirements necessary for application to anyone of the five fraternities on campus. Regulation of the opening dates of the rushing season are also controlled by the council. During the school year the social calendar dates of each fraternity are supervised to discourage conflicts.

The Chairmanship of the council rotates annually and during the past school year Richard Mitchell of Rho Delta Phi acted as chairman.

It was a brisk October day when final arrangements for the Associated Collegiate Press Convention had reached their final stages. Mr. Hobson gave advice for the time of departure, hotel, and transportation accommodations to the Tech News and L-Book representatives.





PUBLICATIONS

He placed the T-square against the untrimmed edge of the mounted pictures which lay on the table before him.

Pressing hard on the square, he moved a razor blade along the pictures. Removing the square, he spilled the excess picture edges from the board.

He straightened his shoulders and held the board at arm's length.

His arms shook. He tried to hold them steady, but he couldn't. He placed the board back on the table.

He stretched his fingers. They felt as though they were going to drop from his hands.

He tried to remember what it was like not to be deadly tired.

He couldn't.

He tried to remember a Saturday night date when his mind hadn't strayed to his work all during the movie at the Fox theatre.

He couldn't.

He tried to remember what it was like to sleep late in the morning, to nap in the afternoon, and not to work in the basement or the balcony.

He couldn't.

He slid off his chair and pulled his coat from the hook on the wall. He put it on, picked up a handful of unedited copy, and walked out of the office, locking the door behind him.

As he walked up the stairs into the out-of-doors, he straightened his shoulders again.

They ached.

The L-Book Publication



Members from left to right are John Turchan, Bernie Knotek, Eddie Mogridge, Rod Sambrook, Dick Mitchell, Jerome Uhlar, and Gary Gast.

STAFF

EDITOR-IN-CHIEF	John Turchan
ASSOCIATE EDITOR	Dick Mitchell
BUSINESS MANAGER	Bernie Knotek
ASSISTANT EDITOR	Gary Gast
EDITORIAL ASSISTANT	Jerome Uhlar
FRATERNITY EDITOR	Don Gauthier
PHOTOGRAPHER	Jerome Cislo
TYPIST	Eddie Mogridge



Enthusiastically scrutinizing L-Book copy, Editor-in-chief John Turchan cuts class to fulfill requirements of the job.



"Too many seniors" kept Associate Editor Dick Mitchell busy for weeks collecting the necessary material for the graduate section.



Business Manager Bernie Knotek made arrangements for all money transactions, whenever the event arose.



Fraternity Editor Don Gauthier broke his leg in mid-winter. However, this did not hamper Don's willingness to help on the staff, although it was decided to give him a helping hand by distributing some of the work over the rest of the staff.



Eddie Mogridge did a great deal of typing for the 1955 L-Book.



Top Left: Photographer Jerome Cislo prepares a few prints for the L-Book between classes. Top Right: Assistant Editor Gary Gast snips prints for final layout sheets. Bottom Right: Editorial Assistant Jerome Uhlar prepares copy and titles for a few pages in the L-Book during lunch hour.

The Tech News

BI-MONTHLY PUBLICATION



Members of the Tech News staff from left to right are Hal Duntz, Dick Stewart, Wayne Phillips, and Don Mulrenin.

STAFF

EDITOR-IN-CHIEF	Milt Werkema
NEWS EDITOR	Hal Duntz
ASSISTANT EDITOR	Dick Stewart
NIGHT EDITOR	Stan Simpson
PHOTOGRAPHER	Eric Gengenbach
SPORTS EDITOR	Gerry Klees
SPORTS WRITER	Stan King
FEATURE WRITER	Will Slack
OFFICE REPORTER	Eddie Mogridge
CARTOONIST	Herb Barnett
DISTRIBUTION MANAGER	Don Mulrenin
CIRCULATION STAFF	Wayne Phillips
BUSINESS MANAGER	Vince Foster
FACULTY ADVISOR	Mr. James W. Hobson



A DAY AT THE PRINTERS

When all of the copy has been compiled and edited for printing of the Tech News, a final layout sheet representing the paper must be made at the printers. On this page are a few pictures depicting this work at the printers. Milt Werkema, editor-in-chief, is preparing the layout pages. Sometimes an occasional check on the type is necessary in the make-up room. After the layout pages are complete, the type is set in its correct position for printing. In the printing room the paper is put to press after all final checks on the operation of the press are completed.

Tech News (continued)



It was time for the next issue of the Tech News to come off the press. For this purpose Eric Gengenbach, the staff photographer, was recruited for a proof reading assignment in order to help meet the deadline. After the paper had been printed, Don Mulrenin and Wayne Phillips, in the lower picture, prepared the paper for distribution to the student body.



Key men in the preparation of the Tech News are from top to bottom Herb Barnett, Dick Stewart, Vince Foster, and Hal Duntz. From the combined efforts of these men and their associates emerges the bi-monthly edition of the Tech News.

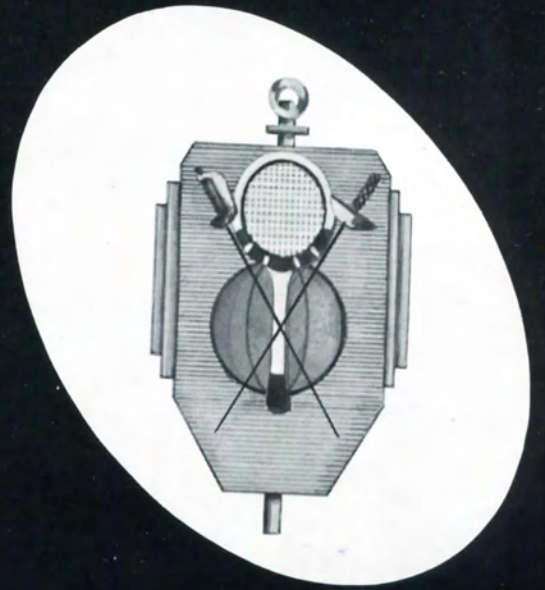
Tech News (continued)

ASSOCIATED COLLEGIATE PRESS CONVENTION WASHINGTON, D. C.



Seated from left to right are Bernie Knotek, Vince Foster, Milton Werkema, Pat Kelly, Susan Mann, Laura Schloff, Barbara Myers, John Turchan, James Hobson, and Hurst Wulf. The feminine portion of the table are representatives of the publication staff from Notre Dame of Maryland, while the men represent Lawrence Institute of Technology.

Presenting



Sports

Basketball



SEASON RESULTS

SCHOOL	WE	THEY	DATE
Evansville	72	108	December 1
Assumption	78	94	4
Olivet	77	62	7
Findlay	83	117	11
Evansville	80	76	14
Colorado State	72	58	18
DePaul	60	109	28
Central Michigan	80	107	29
Hillsdale	60	66	30
University of West Ontario	54	72	January 1
Gonzaga	74	106	3
Indiana State Teachers	60	84	8
Huntington	94	83	11
Arkansas State Teachers	95	73	15
Wheaton	77	82	18
Toronto	66	72	22
Manchester	76	63	25
Assumption	68	88	27
Hanover	75	66	29
Detroit Technical	89	67	February 1
Goodyear Tire (exhibition game)	72	104	4
St. Francis	53	99	5
Detroit Technical	54	68	12
Findlay	68	80	15
Wabash	57	75	19
Tri-State	50	68	22

Basketball (continued)

THE STARTING FIVE



Left to Right: James Johnson, right guard; Wally Dzurus, right forward; Ron Wegert, center; Stan Sylvester, left forward; Ray Tomich, left guard; Ray Mawhorter, coach.



Last minute instructions, final preparations, and game strategy are the components of a pregame conference.

Basketball (continued)



An attempt for a basket is made from the foul line for Lawrence Tech.

JUMP BALL!



Basketball (continued)



Lawrence Tech. recovers on a jump ball at mid-court.

Wally Dzurus, number twelve, attempting to tip the ball to Ray Tomich, number eleven, during the Colorado State game.



Basketball (continued)





Will somebody please find the ball? It must be there someplace.

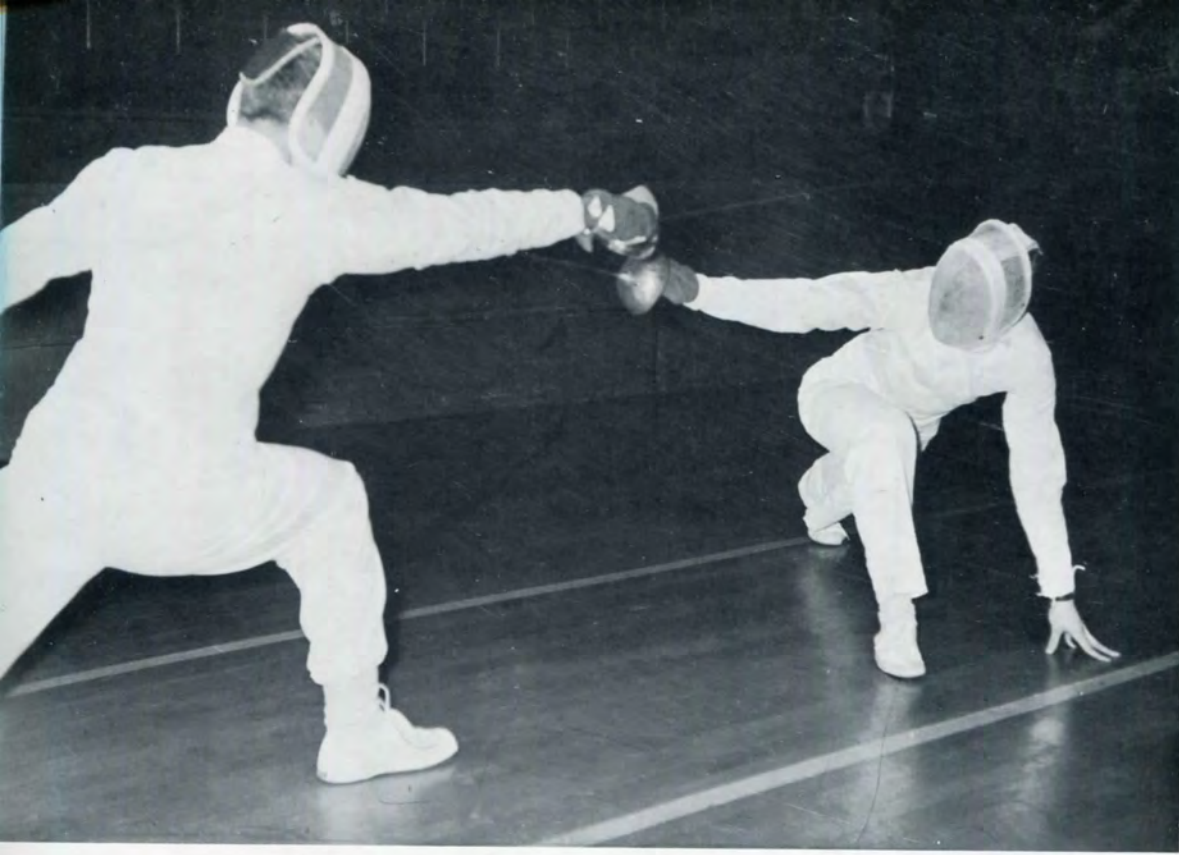
Fencing



Members of the team standing from left to right are Richard Shiner, Epee; Joseph Zaccagni, Foil; Captain, Ronald Yasenchak, Epee; Richard Rowe, Foil. Kneeling are Jerry Gross, Sabre; Bob Miller, Sabre; Bill Rupp, Foil; Ronald Judge, Sabre.

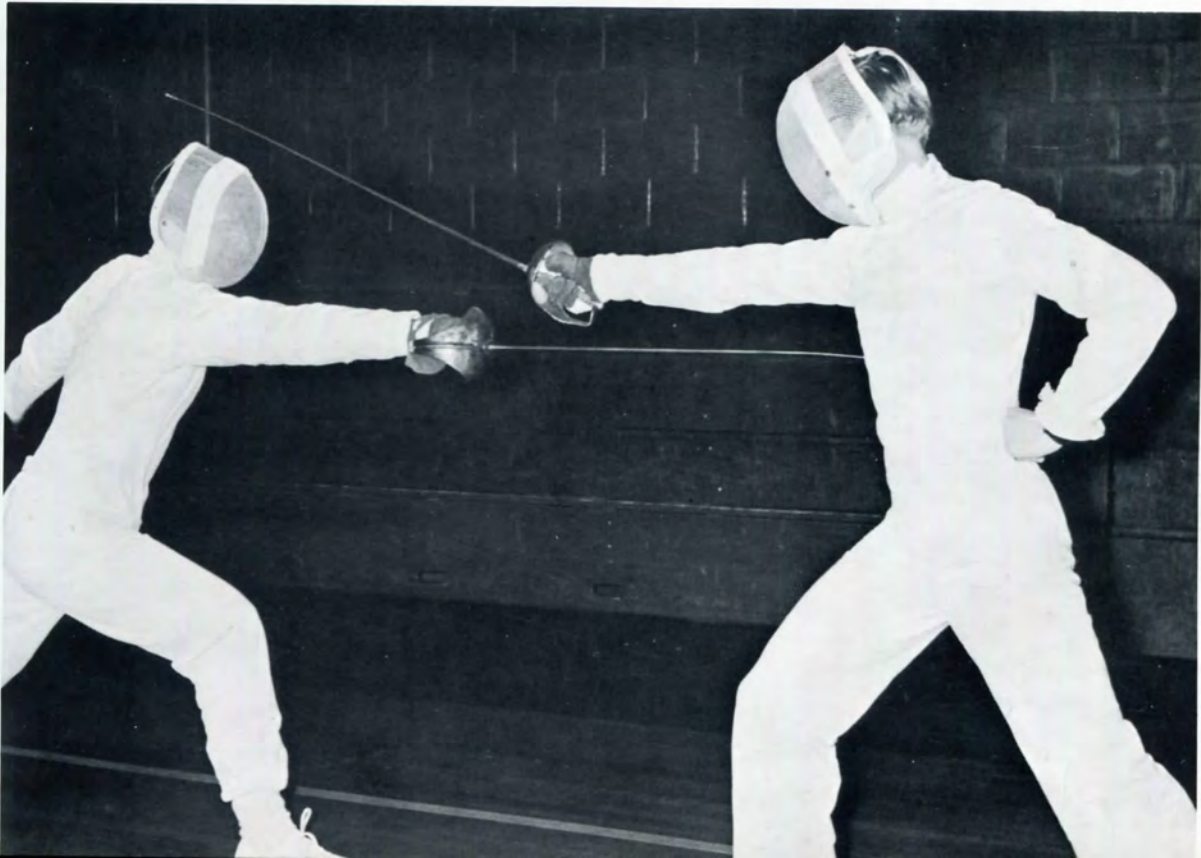
... COUPE'





... A LOW STOP THRUST TO THE CHEST

... PARRY REPOSTE' TO THE HEAD

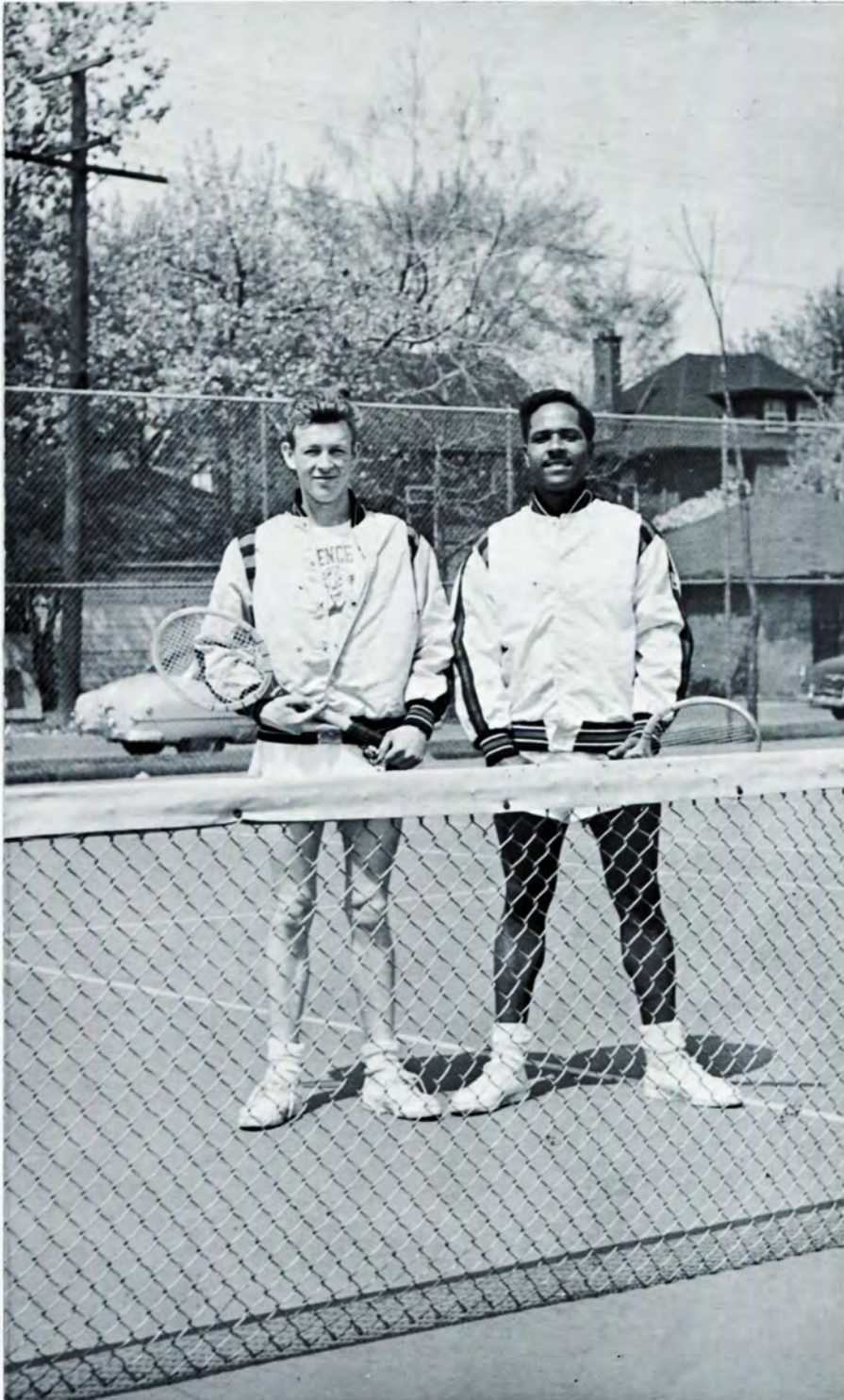


The Tennis Team

VARSITY TEAM

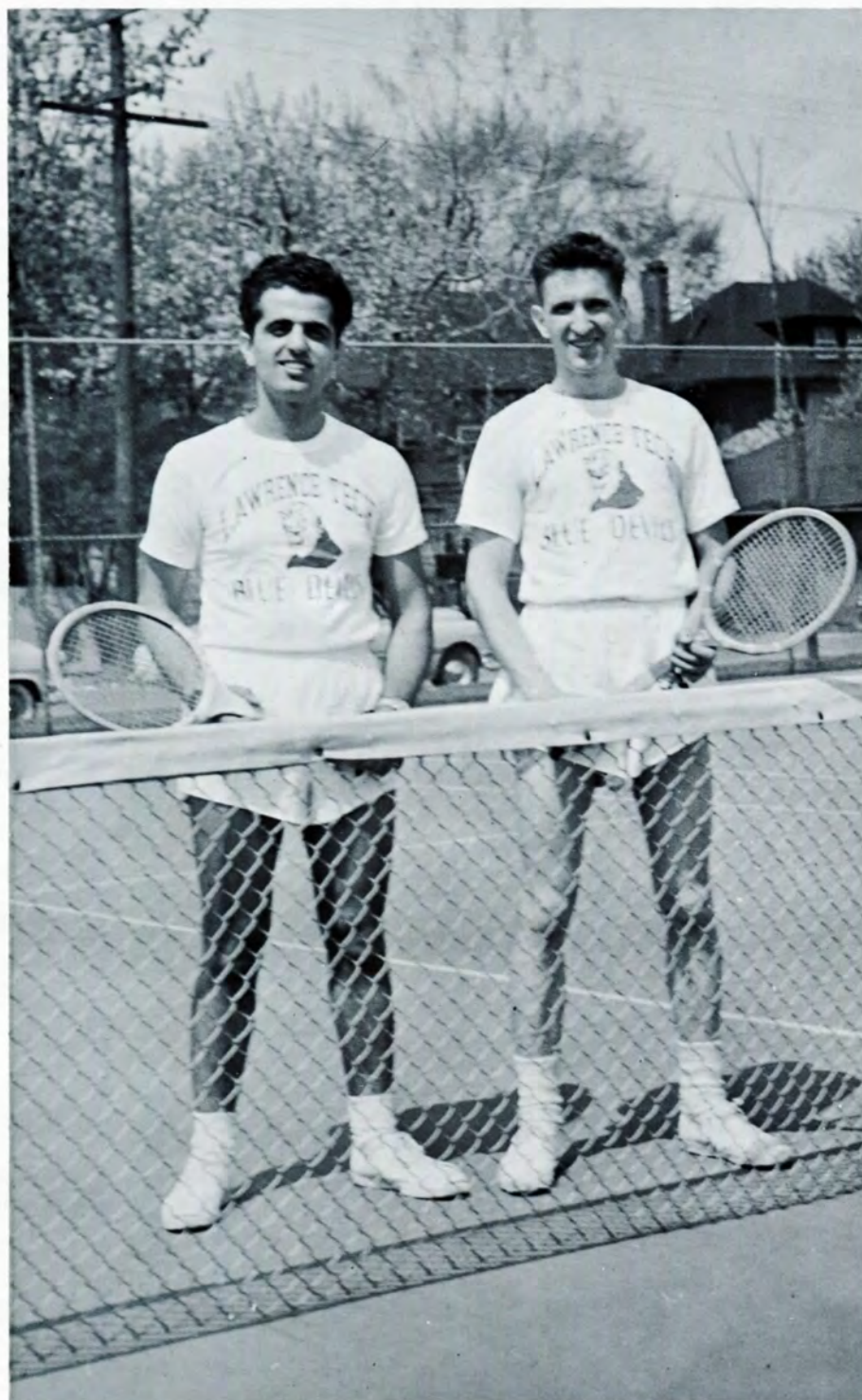


Standing from left to right are Tom Solaka, Wayne Phillips, Carl Hamilton, and Rod Sambrook.



Rod Sambrook and Carl Hamilton compose the first team of doubles.

The Tennis Team (continued)



Tom Solaka and Wayne Phillips
compose the second team of
doubles.



Here are a few pictures of the two doubles team in action on the court during a close game of tennis.

The Bowling Team

The victors in the Toledo University Bowling tournament are from left to right Tony Polisano, Rod Sambrook, John Grindrod, and Earl Boik. For the second consecutive year the Lawrence Tech. bowling team has taken honors at this annual intrafraternity meet sponsored by the Toledo University.



Presenting



Fraternities

Lambda Iota Tau

LAMBDA IOTA TAU COMMITTEE



Left to right: C. Christo, V. Foster, M. Werkema.

Lambda Iota Tau is an honorary award instituted in 1934 by Dean Russell Lawrence. Each year the award is made to those seniors who have been able to combine outstanding scholastic work with active participation in campus activities dur-

ing their sojourn as an undergraduate at Lawrence Institute of Technology.

These men are in fact the campus leaders and maintain the standards and ideals that are the real base for a growing college.

CANDIDATES FOR LAMBDA IOTA TAU

Seated from left to right are Jerome Uhlar, Conrad Kaspers, Donald Dancey, Leon Kohls, and Harold Duntz. These men represent the candidates for the Lambda Iota Tau award. If accepted, presentation will be made at the last student council meeting of the year.



Alpha Gamma Upsilon



Officers seated left to right are Vince Miller, President; George Fell, Vice President. Standing are Keith Edwards, Recording Secretary; Dick Marbrey, Corresponding Secretary; Jerry Kourtjian, Treasurer.

In 1933, with the help of Mr. Kenneth Mead, head of the Physics Department at Lawrence Tech., the Epsilon chapter of Alpha Gamma Upsilon was founded. Necessitated by the rather spontaneous growth of the Epsilon chapter, a fraternity room was constructed on the fourth floor of L.I.T. In 1937, the purchase of a home in Highland Park, Michigan, permitted A.G.U. to become the first fraternity on campus to have quarters separated from the school. During World War II, the obligations concerning the chapter house became too great, whereupon the Epsilon chapter sold the house and returned to the fourth floor room for meetings.

Epsilon made the first step in the formation of an Inter-Fraternity Council in March of 1940. Representa-

tives from each fraternity assembled to discuss the drafting of a constitution. In May of that year, the constitution was passed and the I.F.C. became an official organization of L.I.T., largely through the efforts of A.G.U.

Last May, Alpha Gamma Upsilon held its 29th national convention in Fort Wayne, Indiana. Festivities included a song feast at the annual stag party, followed in the morning by a bowling tournament, at which Epsilon chapter took honors for the third consecutive year. At 8:00 P.M. a convention ball was held, a prelude to the climax of the convention which was a breakfast banquet held the next morning.



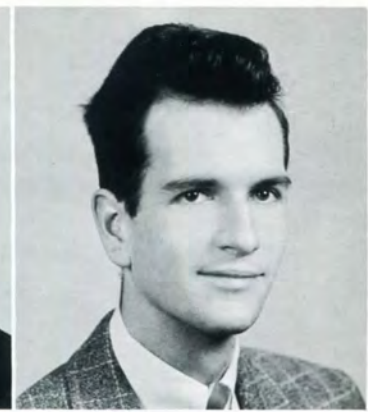
F. Cole



K. Edwards



G. Fell



R. Heimbecker



D. Jacobek



J. Kourtjian



R. Marbrey



N. Miller



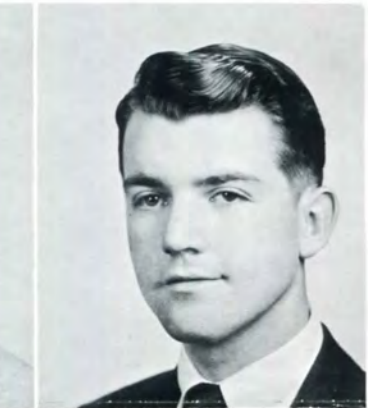
R. Miller



G. Noble



J. Prosser



D. Williams



G. Wixson

Alpha Gamma Upsilon (continued)



Spending the day in the country are Dick Marbrey, Jim Prosser, and Jerry Wixson. The location happens to be Jim Prosser's farm.



Everyone was pleased with the turnout for the pledgemixer. Several members of the faculty also attended. During the course of the evening some of the members enjoyed a friendly game of cards.



Alpha Gamma Upsilon (continued)



REMEMBER

The Four Musketeers . . .
When the chips were down . . .



INITIATION

It was eggs for an appetizer . . .

Notice the empty pails or are they . . .

Kappa Phi Sigma



Officers seated left to right: Conrad Kaspers, Vice President; David Pickett, President; Jay Montgomery, Treasurer. Standing are Hal Duntz, Pledgemaster; Don Mulrenin, Corresponding Secretary; and Gene Rea, Recording Secretary.

Kappa Phi Sigma is the youngest fraternity on campus. Since its inception in January of 1951, Kappa Phi Sigmas' development has been due to the warm feelings of sincerity and congeniality that is shared by all of the brothers.

The main function of our fraternity is to provide an environment for emotional adjustment and intellectual growth of the individual. To accomplish emotional adjustment we encourage support of all school functions and activities, as well as our own social functions. We believe such an attitude is advantageous not only to our own fraternity but to

campus life in general. Since having the ability to lead is of great importance to the engineer, we encourage the individual to accept this responsibility placed upon him while he is a student at Lawrence Tech.

We are proud of our accomplishments, but even more proud of the accomplishments of our members after leaving Lawrence Tech.

Our goal is perpetual, our job is continuous, as long as young men seeking an education attend Lawrence Tech. and participate in campus affairs.



R. Auer



D. Dancey



M. Dietz



H. Duntz



V. Foster



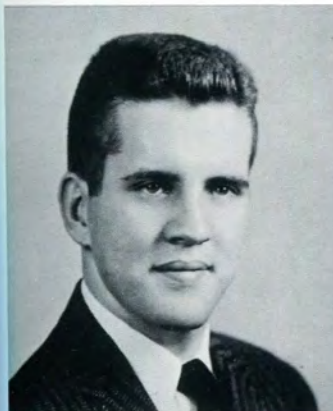
E. Gengenbach



C. Kaspers



L. Kohls



J. Montgomery



W. Phillips



D. Pickett



D. Reitzel



R. Stewart



D. Weber

Kappa Phi Sigma (continued)



HAPPY DAYS

Mel and Bob are off to the golf course . . .

Caught stag and contented . . .

AT THE FUNCTIONS

Present Honeymooners . . .

Future Honeymooners . . .

A cheerful group . . .

Party Pooper . . .



Kappa Phi Sigma



DINNER DANCE - TASSIE'S TAVERN

Group shots of the members . . .
And Bob Morrison took pictures . . .





DINNER DANCE

A candid shot . . .

A posed shot . . .

Friends? Lovers? Countrymen? . . .



Kappa Sigma Kappa



Officers seated left to right: James Pavlak, Secretary; Peter Giudici, Jr., President; Raymond Levulis, Vice President. Standing are Leonard Reaume, Faculty Advisor; and Donald Herby, Chaplain.

The Michigan Beta Chapter of Kappa Sigma Kappa Fraternity was founded at Lawrence Institute of Technology in 1948 by twelve men seeking to develop a spirit of brotherhood and to promote interest in social and scholastic activities.

In an attempt to achieve the fulfillment of this goal, many constructive as well as social activities were undertaken this year. A food concession at the Michigan State Fair and the annual Millionaires' Party were the prime fund-raising activities. The money earned was used for the annual Christmas Party put on for a needy family in the Detroit area. A Christmas tree and all the trimmings, a Santa Claus, and gifts for the entire family helped to make

a less fortunate family a little happier at Christmas. From the proceeds of this year's Millionaires' Party, \$100 was donated to the Lawrence Tech. Building Fund by the fraternity.

Social events for the year included the Presentation Banquet held at Bill's Northern Inn, steak and weiner roasts, a Halloween and a New Year's Eve Party.

Two very successful pledge seasons were initiated and carried out this past year.

Mr. James Hobson became the new faculty advisor for the fraternity.



D. Barto



R. Brown



C. Christo



G. Dzendzel



E. Falendysz



P. Giudici



W. Grogan



D. Herby



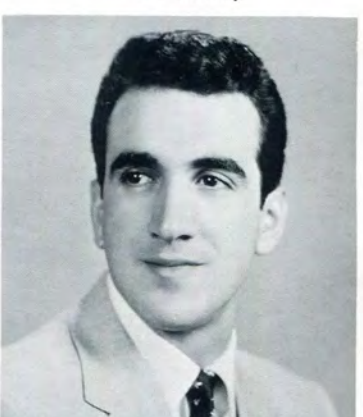
W. Hunley



T. Hysen



R. Levulis



G. Loizos



M. Marshman



N. Pack



J. Pavlak



R. Peller



S. Seiner



E. Sienko



J. Strunk



D. Watson



Let's all go to the State Fair. Gene Falendysz, the master chief, and company will be there at the KSK refreshment stand.

Ah! a cold vernors for a fair maiden, perhaps a hot dog too, was expertly prepared by Leonard Reaume as seen in the top photograph.





AT THE STATE FAIR

- Preparing the food . . .
- A final check . . .
- A toast by the President . . .

Kappa Sigma Kappa (continued)

MILLIONAIRES PARTY

From the proceeds of the Millionaires' Party a donation of one hundred dollars was given towards the building fund. The check for the full amount was handed to Mr. Hobson in the main office in front of the picture illustrations of the new campus.

To this date Kappa Sigma Kappa is the only fraternity on campus to have made a personal donation toward the construction of the new school.

Standing left to right are Mr. Hobson, P. Guidici, L. Reaume, and R. Barto.





George Dzendzel and Ted Hysen relieve the losers of their unfortunate wagers, while below, David Pickett tries his hand at blackjack.



Phi Kappa Upsilon



Officers seated left to right: Donald Leonard, Vice President; Dave Moore, President; Allen Patterson, Secretary. Standing are William Thumm, Chaplain; Walter Levon, Warden; and Ralph Kaphengst, Treasurer.

Phi Kappa Upsilon is represented at Lawrence Tech by the Alpha Chapter in night school and the Delta Chapter in day school. The oldest fraternity on campus, Phi Kappa Upsilon, was founded August 17, 1932, at the suggestion of the late Dean Russell E. Lawrence, the founder of Lawrence Institute of Technology. At present, the fraternity boasts a collegiate membership at Lawrence Tech of fifty-seven and an alumni membership of over nine hundred.

The fraternity actually had its beginning back at the University of Detroit where Dean Lawrence had just completed his fifteenth year as Dean of Engineering. The Dynamics Club (an engineering society at U. of D.) was the organization out of which Phi Kappa Upsilon grew.

As the oldest and largest professional engineering fraternity in the Detroit area, Phi Kappa Upsilon has long endeavored to better serve the colleges and the students where chapters have been organized. Here at L.I.T. the members of the fraternity gave their untiring support to such school functions as the Frosh Fling and the J-Prom.

Phi Kappa Upsilon was also active socially. Several outdoor functions, a weiner roast and a Halloween Party, were held. In addition, Delta Chapter held a New Year's Eve Party which helped to usher the new year in for the fraternity. Alpha Chapter sponsored the Third Degree Dinner held at Carl's Chop House, which climaxed the last pledge season and saw nine men admitted to the Alpha Chapter. The highlight of the last year for Phi Kappa Upsilon was the twenty-second annual dinner dance which was held at the Hawthorne Valley Country Club. More than one hundred and fifty couples, including a hundred alumni, took part in last year's dinner dance. An even more ambitious social calendar is being planned for the coming year.

During the coming years the chapter at L.I.T. plans to put forth an even greater effort to help the college and its students progress towards making Lawrence Tech one of the finest engineering colleges in the mid-west.



W. Agy



R. Bladowski



K. Bratt



T. Braun



D. Cooper



N. DeMarco



J. Fischer



C. Geldowski



D. Fitzsimons



J. Gulau



T. Keffer



L. Kiselis



G. Klees



R. Klubba



W. Levon



H. Mitchell



D. Moore



A. Patterson



J. Prusaitis



S. Radulovich



W. Richardson



R. Simburger



W. Sinclair



R. Solgan



... A wiener roast



... What a card party



EVENTS OF THE YEAR

The Delta Pledges . . .

The Halloween Party . . .

A spy for the Rho Dels . . .

REMEMBER

The Alpha pledges . . .

A Halloween Party . . .

The Valentine Party . . .





THIRD DEGREE DINNER

Preparation of a menu . . .

Boy! Are we hungry . . .

Later, pins were distributed . . .



Rho Delta Phi



Officers seated left to right: Richard Smith, Treasurer; John Turchan, President. Standing are Gudmund Andersen, Secretary; Gary Gast, Vice President.

In early 1938 sixteen men realized the need for a new social fraternity. With the help of Dean Hendrickson they banded together to form the Alpha Chapter of Rho Delta Phi Fraternity in November 1938. Many hours into weeks were spent planning and organizing the constitution, the pledge manual, and the pledge season. March 5, 1939 marked the official inception of Rho Delta Phi as fourteen charter members received their pins and certificates.

Since its beginning Rho Delta Phi has constantly remained active. The Fraternity has formed additional Beta and Alpha-Omega Chapters for day school and alumnae members respectively.

Members are now planning a summer dance and other events to help raise funds for the future Fraternity house.

Rho Delta Phi activities were many, including two pledge mixers, one stag and one drag formal dinners, wienie roasts, house warmings, and stag parties.



E. Bosetti



W. Boyd



T. Burks



D. Chamberlain



J. Cislo



G. Gast



M. Goldberg



F. Houser



R. Houser



D. Mitchell



A. Olson



J. Probyn



H. Quandt



E. Rozkuszka



R. Sambrook



D. Smith



J. Turchan



R. Urquhart

EMISSAIRES TO THE NEW CAMPUS



Standing from left to right: The Nubert Kid, Hardknee Hamhook, Mr. Number One, and The Buttermilk Kid. After spending a sunny afternoon at the new campus a few Rho Delts posed for a character portrait. After the camera click, the campus debutants dashed back to the fraternity room for a game of hearts.



REMEMBER

Bosetti's Pizza Party . . .

First Business Meeting . . .

Clay's Stag Party . . .

Rho Delta Phi (continued)



A few pictures of the great group that turned out for the pledge mixer at brother Chamberlain's.



INITIATION



Jim Probyn, Bill Boyd, and Ed Rozkuszka perform the duck walk under the careful supervision of the members of Rho Delta Phi fraternity.

Acknowledgement

PORTRAIT PHOTOGRAPHY Metropolitan Art Studios

COVER DESIGN Mr. John Turchan

CANDID PHOTOGRAPHY Mr. Jerome Cislo

TECHNIQUE ADVISOR Mr. Elvin Weatherly

DEDICATION Mr. Jerome Uhlar

LITHOGRAPHERS Litho Art Incorporated

COVERS Beckett Company

FACULTY ADVISOR Mr. James Hobson

BINDERS Triangle Bookbinding Company

EDITOR'S THANKS

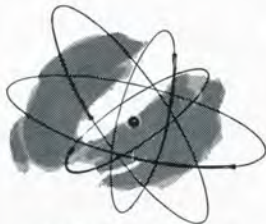
I wish to extend my gratitude to everyone who was a part of the 1955 L-Book. If in the hustle and bustle of getting this issue to press, I have forgotten anyone, I am sure you were the cog that made the wheels turn.

Sincerely,
JOHN TURCHAN
Editor-in-Chief

12 of the basic industries in which Bendix products play a vital role



ELECTRONICS



ATOMIC ENERGY



AUTOMOTIVE



AVIATION



GUIDED MISSILES



RADAR



COMPUTERS



MARINE



RAILROAD



PETROLEUM



CONSTRUCTION



AGRICULTURE

A SOUND REASON WHY *Bendix* OFFERS TODAY'S ENGINEERING GRADUATE AN UNLIMITED FUTURE!

Diversification is an important asset in business.

Especially so from the viewpoint of the engineer because:

It encourages and promotes freedom of ideas. Keeps engineering ingenuity flexible and adaptable. In short, gives full vent to an engineer's creative ability . . .

While at the same time it provides a healthy, stable, secure foundation for both the company and the individual to build and expand.

If diversification in business appeals to you as a graduate engineer, you'll be greatly interested in the Bendix Aviation Corporation.

For Bendix is unlike any other company in America in its versatility, facilities, experience, range of products and different fields of engineering endeavor. Nearly a

thousand different products are produced by our 24 manufacturing divisions.

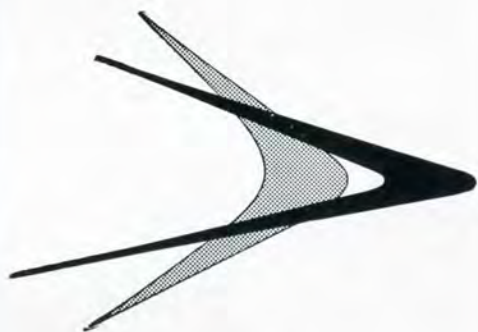
As a result, we not only offer a wide choice of locations coast to coast but also career-building opportunities as broad as your ambition and ability in mechanical engineering . . . hydraulic mechanisms . . . electronics . . . magnetics . . . computers . . . servo-mechanisms . . . radar research . . . metallurgy . . . solid-state physics . . . instrumentation . . . radiation detection . . . nuclear physics . . . guidance and control systems plus many more engineering fields of challenge.

Write for your copy of "Bendix and Your Future." It gives the full story about Bendix, its products and employment opportunities.

BENDIX AVIATION CORPORATION

Fisher Building • Detroit 2, Michigan





An invitation

TO YOUNG MEN WITH AN EYE ON TOMORROW

YOU VERY LIKELY have heard about THE *FORWARD LOOK* at Chrysler Corporation. True, it's a bright new style in our cars, and a new contemporary approach to engineering advances to make our cars safer, easier to drive and more pleasurable.

But at Chrysler Corporation, you'll find THE *FORWARD LOOK* is much *more* than this. It is a way of thinking, a way of planning, a way of building for the future. It stands for *people*, too—men with foresight and the ability to take advantage of the tremendous opportunities this vast automobile business offers.

Young men with their eye on *tomorrow* as well as today, will like THE *FORWARD LOOK* at Chrysler Corporation.

The Chrysler Institute of Engineering with advanced courses leading to a Master's degree in Automotive Engineering is the finest of its kind in the world. On-the-job training with top calibre engineering teams can put you right next to the challenge and promise of the future of this great industry.

A career with Chrysler Corporation offers many advantages to the graduate. A position with responsibility, financial rewards and security. Room to grow and move up. Opportunity to contribute to and be a part of THE *FORWARD LOOK* at Chrysler Corporation.

We extend a cordial invitation to each of you to call us or stop in—to find out where your talent can best be put to use.

PLYMOUTH • DODGE • DESOTO • CHRYSLER • IMPERIAL

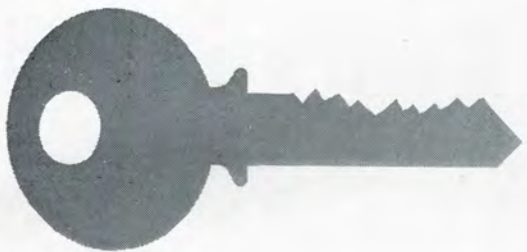
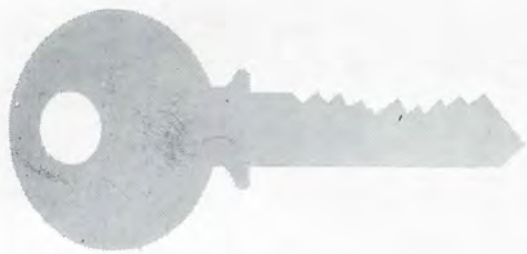
CHRYSLER CORPORATION

THE *FORWARD LOOK*

Dodge Trucks • Chrysler Marine and Industrial Engines • Oilite Metal Powder Products • MoPar Parts and Accessories • Airtemp Heating and Air Conditioning • Cycleweld Cement Products

Copyright 1955 by Chrysler Corporation

See "Climax!" and "Shower of Stars"—Thursdays, CBS-TV, 8:30 P.M. EST.



3 keys to interchangeability

ANALYTICAL ENGINEERING • CORRECT INSPECTION TOOLS • MANUFACTURING SKILL

This applies to all component parts. Vinco is noted for spline gages and master gears; two inspection tools that provide the most practical and rapid means for checking splined parts and gears. The use of these tools is vital in achieving interchangeability of splined parts and gears.

You can rely upon Vinco to analyze any spline problem and supply the proper gages for the complete quality control of splined parts.

Vinco master gears have proved to be the most practical means for checking the rolling action of production gears.

VINCO CORP., 9111 Schaefer Hwy., Detroit 28, Mich.

TRADEMARK OF DEPENDABILITY ®



Are You Looking For

A REAL OPPORTUNITY?

- As a young graduate engineer of one of the country's leading engineering schools, you undoubtedly desire to start your professional career with a firm offering a real opportunity to get ahead. Pioneer offers you that opportunity in the industrial engineering field.
- Your desires, naturally, are to obtain a firm start, to get practical engineering experience, to increase your knowledge by working in many phases of engineering, an opportunity to advance to the top rungs.
- As the largest and today the most progressive company in the industrial engineering field, Pioneer offers you all of these.
- A leader in the independent engineering industry since the 1930's, Pioneer has developed its present reputation through its proven capability to handle every detail of the most complete program. Highest calibre production engineers have joined and remained with Pioneer because the firm has eliminated the high peaks and deep valleys of employment by consistently cutting for industry both cost and time of re-tooling, improving of product design and devising of new techniques. At Pioneer variety is substituted for repetitiveness, challenges for stagnation.
- Pioneer officials will be glad to tell you personally of the opportunity they can offer you.



19669 JOHN R STREET

DETROIT 3, MICHIGAN

Best Wishes to All the Graduates

**COMMERCIAL
STEEL TREATING CORPORATION**

Metal Treating Specialists

6100 TIREMAN

DETROIT, MICHIGAN

Success
To The Graduates

From

LAMINA-DIES & TOOLS

INCORPORATED

BERKLEY

MICHIGAN

Something to remember . . .

Edison will help you . . .

- Plan your kitchen
- Select your lamps
- Do the laundry easier

- Plan a menu
- Plan a one-dish meal
- Preserve foods easier
- Plan party refreshments

One of these days, perhaps very soon, you'll be starting a home of your own. When that time comes, look to the trained young women in the Home Service Division at Detroit Edison. They can help you solve many of the homemaking problems that frequently puzzle a new bride.

Without charge, they will answer your questions over the telephone . . . send booklets and folders . . . or in some cases make a personal visit.

In Detroit, telephone Woodward 2-2100. In other areas, call your nearest Edison Office.

P.S. Mother might be interested in some of their answers right now.



DETROIT EDISON

Have You An Assembly Problem?

**LET OUR
SPECIALISTS
HELP YOU**

Are you still using slow uphill hand methods that keep your assembly department in low gear and labor costs in high? Discard them and get on to the rapid straight-away of speedy, inexpensive production offered by D.P.S. power-driven machines.



DETROIT POWER SCREWDRIVERS

Drive screws as fast as one a second—all types of screws—no marring of heads or stripping threads—all screws driven to uniform tension—Hopper-fed—SCREWS ALWAYS IN SIGHT OF OPERATOR—3 models, one to fit your requirements.

SPECIAL ASSEMBLING MACHINES

For light assembly operations using Hopper Units to feed component parts.



DETROIT POWER NUT DRIVER

A revolutionary new machine that drives nuts with amazing speed, either semi-automatically, or it can be adapted to full automatic operation entirely eliminating the manual handling of nuts. Capacity: nuts, $\frac{3}{16}$ " min. to $\frac{1}{4}$ " max. across flats.

THE HOPPER UNIT

Motorized—Highly Adaptable—A selective feeding device whereby production parts are selected, oriented and fed in a given position for primary and secondary operations.

*Write for
Catalog*



DETROIT POWER SCREWDRIVER CO. 2797 W. FORT ST. DETROIT 16, MICH.

CONGRATULATIONS!!

TO THE

FACULTY AND STUDENT BODY

OF

LAWRENCE INSTITUTE OF TECHNOLOGY

ANCHOR STEEL AND CONVEYOR COMPANY » »

DESIGNERS • MANUFACTURERS

6908 KINGSLEY AVE. • DEARBORN, MICHIGAN



THE STANDARD TUBE CO.

“STANDARD”

ROUND, SQUARE AND SPECIAL SHAPE

Welded and Butted Steel Tubing

Fabricated Tubular Parts

Upset Tubes and Forgings

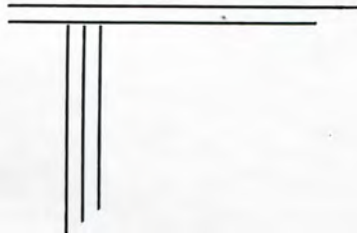
Stainless Steel Tubing

24400 Plymouth Road

KEenwood 1-9300

Detroit 39, Mich.

Congratulations
On Your Graduation



**Detroit
Electrical
Contractors
Association**

Manufacturing

The hardest metal

CEMENTED CARBIDES

The most magnetic metal

ALNICO PERMANENT MAGNETS

The most thermally sensitive material

THERMISTORS

The densest metal

HEVIMET

Investigate the opportunities for

Engineers

at

CARBOLOY

DEPARTMENT OF GENERAL ELECTRIC COMPANY
DETROIT 32, MICHIGAN



CONGRATULATIONS

Detroit Broach Company

.

Rochester, Michigan

GUSTAV VON REIS, *Pres.*



**SPAULDING ELECTRIC
COMPANY**

Power Apparatus Specialists

**Application — Installation — Maintenance
Repair — Motors — Generators — Transformers
Switchgear — Substations — Speed Reducers
Couplings**

1350 Michigan Ave. Woodward 2-6200

DETROIT 26, MICHIGAN

**Engleside Tool
& Mfg. Co.**

SPECIALISTS IN

AUTOMOTIVE BODY FIXTURES

DIES AND JIGS

6100 East Davison

TWinbrook 1-2165

DETROIT 12

Michigan Drill Head Co.

DESIGNERS—BUILDERS

**Tapping and Drilling
Single and Multiple Spindle**

11449 Timken

JEfferson 9-4200

Van Dyke, Mich.

CONGRATULATIONS

Gorham Tool Co.

14401 Woodrow Wilson

Detroit 38, Michigan

Metal Working Machinery

**RIORDAN
MACHINERY
COMPANY**



213 Curtis Building

Detroit 2

CONGRATULATIONS

LAWRENCE TECH.

from

**KELSEY-HAYES
WHEEL CO.**

- DETROIT -

**AJAX STEEL &
FORGE CO.**

•
FORGINGS
•

205 Adair

Lorain 7-0755

**INDUSTRIAL WIRE CLOTH
PRODUCTS CORP.**

•
*INDUSTRIAL WIRE CLOTH
PRODUCTS*
•

3927 FOURTH ST. WAYNE, MICHIGAN

KOESTLIN TOOL & DIE CORP.

STAMPING SPECIALISTS

NO WORK TOO LARGE



Complete Body Die Facilities



Humboldt and Magnolia Aves.

TA. 5-1490

DARIN &
ARMSTRONG
Inc.

GENERAL CONTRACTORS



2041 Fenkell

Detroit,

Michigan

HOLLEY
CARBURETOR
CO.

DETROIT, MICHIGAN



Which is *Your* choice for the future?

• It takes all kinds of engineers to design, produce and distribute SQUARE D's broad line of electrical equipment.

• Throughout its years of expansion Square D's prime source of engineering talent has been schools such as yours. Not only electrical engineers. Mechanical and industrial engineers, too.

Would you like to know more about Square D and the opportunities we offer?



SQUARE D COMPANY

DETROIT • MILWAUKEE • LOS ANGELES

SQUARE D COMPANY CANADA LTD., TORONTO • SQUARE D de MEXICO, S.A., MEXICO CITY, D.F.

Today-

AS FOR THE PAST **53** YEARS

ENGINEERS LOOK TO LONG FOR LEADERSHIP

TORQUE CONVERTERS - CLUTCHES
RADIATORS - OIL COOLERS - AIR
CONDITIONING AND REFRIGERA-
TION UNITS



LONG MANUFACTURING DIV., BORG-WARNER
12501 Dequindre Street • Detroit, Mich.



Executive Jobs For Engineers

Bell Telephone companies pick many of their top executives from among their engineers. More than half the Presidents of all Bell companies have engineering degrees—as does the President of the American Telephone and Telegraph Company.

What kind of engineering interests you most as a life work? Michigan Bell has unusual opportunities for engineering abilities of every type . . . well-paid, satisfying, permanent jobs in the rapidly-growing field of communications.

Find out today about your Future Unlimited from your Placement Office, or call Woodward 3-9900, Ext. 541.



**MICHIGAN BELL
TELEPHONE COMPANY**

THE CHAS. A. **STRELINGER**

CO.

149 E. Larned St. Detroit 26, Mich.
WO. 2-7474

MACHINE TOOLS
(Metal Working Machinery)

CUTTING TOOLS

INDUSTRIAL SUPPLIES

- "ACE" Drill Jig Bushings
- "BOSTON" Gears, Sprockets, Speed Reducers, Ratiomotors
- "Bost-Bronz" Bearings
- "MORSE" Drills, Reamers, Taps, Dies
- "BLACK & DECKER" Electric Tools
- "YALE" Hoists—Electric and Hand
- "DODGE" Power Transmission Equipment
- "MINNESOTA MINING & MFG. CO. 3M
Abrasives and Industrial Tapes
- "SIMONDS ABRASIVE CO." Grinding Wheels
- "CARBOLOY" Tools
- "ARMSTRONG" Wrenches, Lathe Tools, Tool Bits
- "BERYLCO" Beryllium Copper Non-Sparking Tools
- "SCHRADER" Air Control Products

Serving Industry Since 1884

Chas. T. Bush - President

Compliments of

WELTRONIC COMPANY

MANUFACTURERS OF RESISTANCE WELDER CONTROLS
and SPECIAL ELECTRONIC CONTROLS

19500 West 8 Mile Rd.

Phone KEnwood 2-2800

DETROIT 19, MICHIGAN

*Congratulations Graduates
From*

UNISTRUT CORP.

Wayne, Mich.

CONGRATULATIONS

U. S. BROACH CO.

DETROIT 34, MICHIGAN

CONGRATULATIONS GRADUATES

**C. W. SMITH
ENGINEERING**

DESIGNERS OF TOOLS, JIGS AND
FIXTURES

66 East Forest Avenue Detroit 1, Michigan
TE. 2-7662

Best Wishes

SCHURRER CONSTRUCTION CO.

BUILDING CONTRACTOR

Pontiac - Michigan

Manufacturers of

AIRCRAFT AND AUTOMOTIVE
PARTS

THOMPSON PRODUCTS, Inc.

Factories in Cleveland, Detroit and Los Angeles
Subsidiaries—

Thompson Aircraft Products Co., Euclid Ohio
Toledo Steel Products Co., Toledo, Ohio
Thompson Products, Ltd., St. Catharines, Ont.

BRUCE PRODUCTS CORPORATION

Manufacturers

Buffing Compositions—Buff & Polishing Wheels

Drawing Lubricants — Grinding Compounds

Spray Booth Coating — Non-Rust Oils

Soldering and Tinning Fluxes

Trade BRUKO Mark



Detroit Sales Office
6519 Grand River
TY. 6-4594

Plant & Gen. Offices
Howell, Mich.
1090

**Manufacturers
National Bank of Detroit**

WOODWARD AT MANCHESTER

Highland Park, Michigan

Member Federal Deposit Insurance Corporation

**ENGINEERING
REPRODUCTION, INC.**

•

*Precision Metal Drawing Reproductions
and Layout Panels.*

•

13550 CONANT

Detroit, Michigan

Compliments Of

Dearborn Tool & Die Co.

10200 Ford Rd.

Dearborn, Michigan

CONGRATULATIONS

from

SIMPSON MANUFACTURING CO.

LITCHFIELD, MICHIGAN

Best Wishes

**CHICAGO RAWHIDE
MANUFACTURING CO.**

Compliments of

**ZENI-MAGUIRE
COMPANY**

MECHANICAL ENGINEERS

12216 Woodrow Wilson TO 8-3070
Detroit, Mich.

“Congratulations”

**L. I. T.
WALBRIDGE ALDINGER
COMPANY**

General Contractors

Detroit, Michigan

Courtesy of

**STEEL SASH
& ERECTING CO.**

19320 West McNichols Road

Detroit 19, Michigan

Advance Stamping Co.

SMALL STAMPING SPECIALISTS



7075 LYNDON

DETROIT, MICH.

ENTERPRISE TOOL AND GEAR CORPORATION



8320 E. McNICHOLS ROAD

DETROIT 32, MICHIGAN

TW 1-5780

CONGRATULATIONS, GRADUATES

from

Danly Machine Specialties, Inc.

1549 Temple Avenue

Detroit 16, Michigan

WOODWARD 3-6666

DIE SETS — NEW FEATURES

DIE MAKERS' SUPPLIES

NEW and IMPROVED LINE OF DIE SPRINGS

NEW STOCK GUIDES FOR DIES

PUNCH PRESSES

Be Sure Always Set Dies in Danly Die Sets

and Run in Danly Presses

Congratulations to

Lawrence Tech on past achievements and

best wishes for future success

ECLIPSE COUNTERBORE CO.

MANUFACTURERS OF FINE END
CUTTING TOOLS

1600 Bonner Avenue

Detroit 20, Michigan

Best Wishes

**DISTEL
TOOL & MACHINE CO.**

2585 Beaufait

WA. 1-3071

Detroit, Mich.



**Peninsular
STEEL COMPANY**

TOOL STEELS

PLATE

COLD FINISHED BARS

HOT ROLLED BARS

ALLOY BARS

DRILL RODS

FLAT GROUND DIE STEEL

24401 Groesbeck—P. O. Box 3853

Detroit 5, Michigan

DR. 1-9400

PR. 8-2121

Other Warehouses

Cleveland	-	Toledo	-	Grand Rapids
Akron	-	Chicago	-	Indianapolis
Dayton	-	Buffalo		

CRESCENT BRASS & PIN CO.

Manufacturers Of

RADIATOR AND SHOULDER CHAPLETS
DOUBLE HEAD AND MOTOR CHAPLETS

CORE PLATES, TAPER PLUGS

SIMPLEX ROOFING NAILS

SPECIAL WIRE FORMATIONS

AND METAL STAMPINGS

Office and Factory 5760-5800 Trumbull Ave.
at Viaduct

Detroit 8, Mich., U.S.A.

CONGRATULATIONS. TECH

on a 22 year record

from the pioneers of

FLUTED GUIDE

RATE-OF-FLOW METERS

and

SPECIAL TESTING EQUIPMENT

**Commercial Research Laboratories,
Incorporated**

20 Bartlett Avenue Highland Park 3, Michigan

Manufacturers of

COX INSTRUMENTS

Established 1912

STUDENTS

Many members of your alumni, as outstanding American citizens, have set high standards in a profession which has done so much to make this country of ours a world leader.

We need more and more engineers like that who can think straight and act vigorously to keep American the land of opportunity.

You gentlemen have the equipment for that leadership. We are depending on YOU.



NATIONAL BROACH & MACHINE CO.

5600 St. Jean

Detroit, Mich.

Detroit Stamping Company

Established 1915

MANUFACTURERS OF

Pressed Metal

Parts and Products

Medium Size and Smaller Stampings

"DE-STA-CO" Toggle Clamps

Arbor Spacers, Shims,

Packaged Shim Stock

350 MIDLAND AVENUE

Highland Park Station

DETROIT 3, MICHIGAN

TOWNSEND 8-5080

N. I. TIMCO

Member L. I. T. Alumni



DeLUXE DIE WORKS

20201 HOOVER ROAD

DETROIT, MICHIGAN

Compliments of

CLYDE BICKEL COMPANY

Detroit, Michigan

Congratulations

from

**WAYNE FOUNDRY &
STAMPING CO.**

Manufacturers of
**SHORT RUN AUTOMOTIVE
and
AIRCRAFT STAMPINGS**

DETROIT 10, MICH.

Best Wishes

MAUL MACOTTA CORPORATION

Detroit, Michigan

Compliments of

**MILLER - SELDON
ELECTRIC CO.**

1930 McGRAW

DETROIT

Congratulations
L. I. T.
from

HAMILL ELECTRIC CO.

Detroit, Michigan

COMPLIMENTS OF

WOLVERINE TUBE

Division of
CALUMET & HECLA, INC.
1411 Central
Detroit 9, Michigan

CONGRATULATIONS

The Peninsular Grinding Wheel Division
Of Abrasive & Metal Prod. Co.

A Michigan Corporation

*Engineers—Save by
Standardizing on*



**FIXTURE CLAMPS
AND COMPONENTS**

15 STYLES
CLAMPS

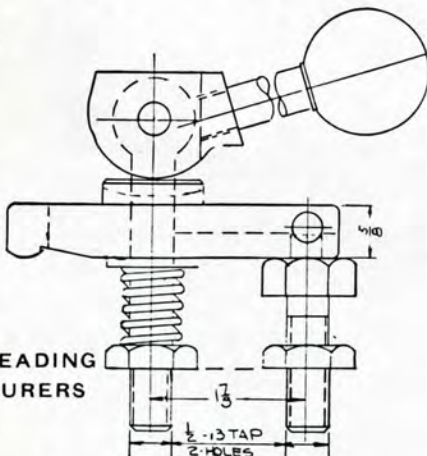
100
SIZES

* * *

OVER
350
FIXTURE
PARTS

* * *

USED BY LEADING
MANUFACTURERS
IN U. S. A.



WEST POINT MFG. CO.
26935 W. 7 Mile Rd., Detroit 19, Michigan

A Recognized

QUALITY SOURCE

for

- **DIES**
- **TOOLS**
- **JIGS**
- **FIXTURES**

RICHARD BROTHERS DIV.

ALLIED PRODUCTS CORPORATION

Detroit and Hillsdale

The Wayne Way

GOOD PRODUCTS PLUS GOOD SERVICE

Metal Working Lubricants
Rust Preventives
Paste Solders
Chemical Specialties

**Wayne Chemical Products
Company**

Established 1899

Copeland Street & M. C. R. R.

Detroit 17, Michigan

R. H. McMANUS & CO.

CONTRACTING ENGINEERS

DETROIT
CINCINNATI
PEORIA, ILL.

Our Best Wishes

CONCRETE STEEL CORPORATION

REINFORCING STEEL
WIRE MESH and
MISCELLANEOUS IRON

2411 Vinewood

Detroit 16

**ENTERPRISE
MACHINE PARTS CORP.**

"Tool Makers Since 1920"

Home of Empco Products

2731 Jerome

Twinbrook 1-7900

NAVARRE DIE & TOOL CO.

TOOLS — DIES



13864 Elmira

Detroit, Michigan

Detroit Electric Hoists are built in capacities of $\frac{1}{4}$ to 15 tons. They are made in various designs for practically every kind of material handling problem.

Ask for illustrated Bulletin with interesting information on many types of Detroit Electric Hoists.

DETROIT HOIST & MACHINE CO.

EST. 1905

8222 MORROW ST., DETROIT, MICH.

*Also Manufacturers of
Air Hoists and Cranes*

PARAMOUNT ENGINEERING COMPANY

PRODUCT ENGINEERING

Tool, Die and Special Machine Designers

Wood Patterns and Models

Graphic Engineering

1625 East Grand Blvd. Detroit 11, Michigan

BRANCH OFFICE

7633 E. Davison, Detroit, Michigan

STEEL SCAFFOLDS
and
STEEL BLEACHERS
FOR SALE or RENT

Safway Steel Scaffolds

57 EAST CANFIELD

TEmpLe 3-0420



HETTCHÉ MOTOR SALES

FORD SALES — SERVICE

2475 West Grand Boulevard

KEUFFEL & ESSER COMPANY

EST 1867

Drafting, Reproduction, Surveying
Equipment and Materials
Slide Rules Measuring Tapes

37 W. Palmer

INTERNATIONAL

CONVEYOR & WASHER

CORP.

DETROIT, MICHIGAN

Congratulations and Best Wishes

DOUGLAS & LOMASON CO.

5836 Lincoln Avenue

Detroit 8,

Michigan

SMITH, HINCHMAN & GRYLLS, INC.

ARCHITECTS

800 Marquette Bldg.

Detroit, Michigan

Congratulations from

I. T. WEDIN CORP.

1221 East 9 Mile Road

Ferndale, Michigan

Congratulations

Mechanical Engineering Services Co.

21 Henry St.

Detroit, Michigan

GEORGE LEGGATT

R. C. FAIRCHILD

THE WAYNE OAKLAND BANK

Royal Oak Highland Park

Berkley Clawson

Stephenson Highway at 11 Mile Road

Member Federal Deposit Insurance Corporation

ANDERSON BROS.

Engineers and Manufacturers of Precision Parts

1113 W. Philadelphia

Detroit 2, Michigan

TRinity 1-0072

SCHMIEG INDUSTRIES

ENGINEERS AND MANUFACTURERS

23930 Sherwood

Centerline, Michigan

Phone JEfferson 9-1030

W. T. ANDREW CO.

PLUMBING SUPPLIES

15815 Hamilton Ave. Highland Park, 3, Mich.

TUlsa 3-2000

Compliments of

Saratoga General Hospital

15000 Gratiot

DETROIT

LA. 6-5100

Steel City Testing Machines, Inc.

Manufacturers of Machines for Testing
the Physical Properties of Metals

8817 Lyndon

Detroit 38, Michigan

WEbster 3-3500

END MILLS, COUNTERBORES, REAMERS,
FLAT AND DOVE TAIL FORM TOOLS,
CIRCULAR, FORM RELIEVED MILLING
CUTTERS, SPECIAL TOOLS, BOTH IN
CARBIDE AND HIGH SPEED STEEL. (Ask
for Catalog.) SEE OUR POSITIVE, RIGID
T. I. DRIVE.

FALCON TOOL COMPANY

P. O. Box 4605

Detroit 34, Michigan

20771 Ryan Road

HIGHLAND PARK LUMBER CO.

BUILDINGS SUPPLIES

15853 Hamilton Ave.

Highland Park 3, Mich.

TO. 8-8246

Compliments of

Lawn Equipment Corp.

"EVERYTHING FOR THE LAWN"

518-520 W. 11 Mile Road

Royal Oak, Mich.

LI. 2-1721

Gregory Mayer & Thom Co.

ENGINEERING SUPPLIES

41 Cadillac Square Detroit 26, Michigan

WOODWARD 1-9330

Branch at Lansing, Michigan

Compliments of

SIEWEK TOOL CO.

2862 EAST GRAND BLVD.

Detroit, Michigan

H. A. MONTGOMERY CO.

Manufacturing Chemists

17191 SWIFT

Detroit, Michigan

U. S. A.

Taylor - Thompson Machinery Co.

8095 Livernois

Detroit, Michigan

OFFICIAL CLASS RING JEWELERS
TO LAWRENCE INSTITUTE
Diamonds — Watches — Fine Jewelry

**WEYHING BROS. MFG. CO.
JEWELERS**

Downtown Salesroom
4th Floor David Broderick Tower

"I Want to Be Your Milkman"



Townsend 8-5250

9700 Oakland Avenue

Industrial City Boring Co.

EXTRUSTION TOOLS
JIGS, FIXTURES AND GAGES

11474 E. 9 Mile Road

Van Dyke, Michigan

ARMSTRONG STEAM TRAPS, HUMIDIFIERS, GAS
PURGERS, JOHNSON STEAM JOINTS, HEATERS,
AIR SEPARATORS, SOLENOID VALVES, PUMPS,
CONTROLS, METERING PUMPS, SCHADE PRESS-
URE AND LEVEL REGULATORS.

MERLO Steam Equipment

Successor to A. F. Squier

1506 E. STATE FAIR

DETROIT 26

Twinbrook 1-7005—If no answer call Wo. 3-1233