

# WHERE TEACHERS ARE TAUGHT.



GEORGE PEABODY COLLEGE FOR TEACHERS

The College year is divided into four quarters of approximately twelve weeks each. Each quarter is divided into two terms, each term carrying full College credit for work completed.

## CALENDAR

### SUMMER QUARTER, 1930

First Term: June 9 - July 18  
Second Term: July 19 - August 27

### FALL QUARTER, 1930

First Term: September 26 - November 6  
Second Term: November 7 - December 19

### WINTER QUARTER, 1931

First Term: January 2 - February 10  
Second Term: February 11 - March 21

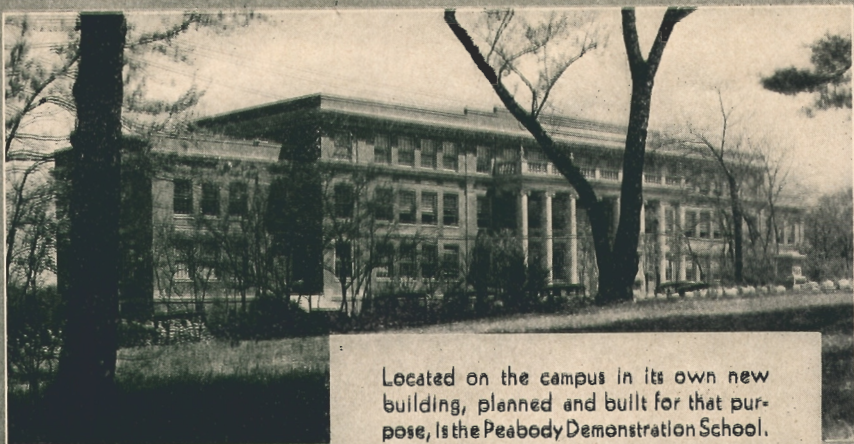
### SPRING QUARTER, 1931

First Term: March 23 - April 29  
Second Term: April 30 - June 6

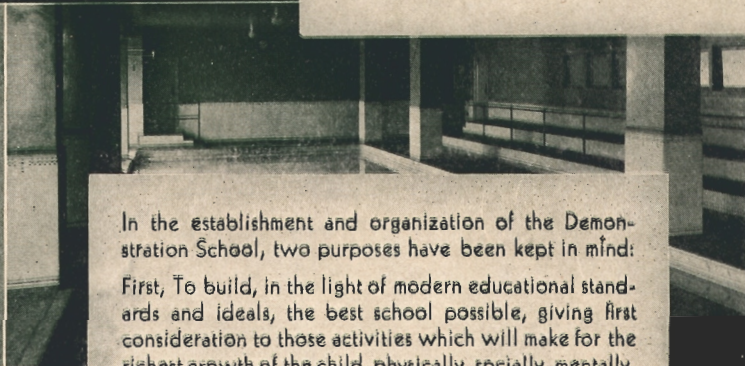
Write the Recorder for Catalogs  
Nashville, Tennessee

NEW SERIES                      MAY, 1930                      VOL. XIX No. 5

Published monthly by George Peabody College for Teachers at Nashville, Tennessee. Entered as Second Class Matter at the Post Office at Nashville, Tennessee.

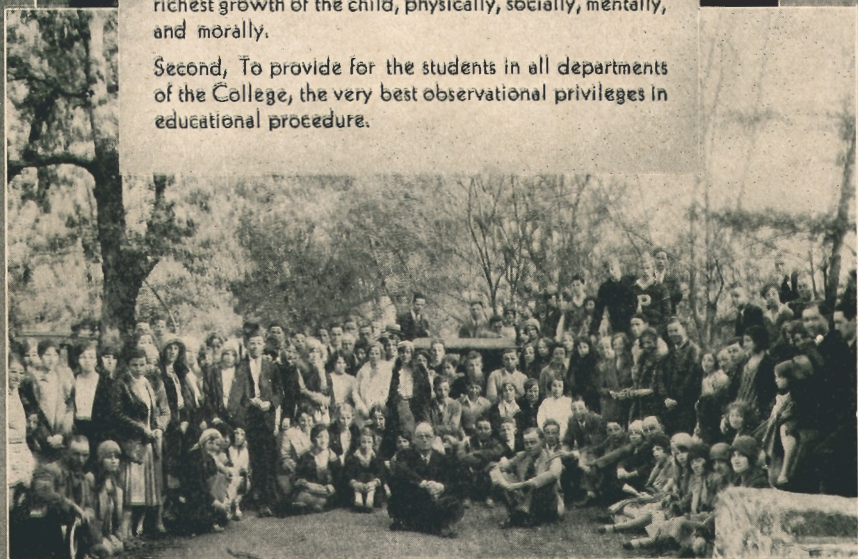


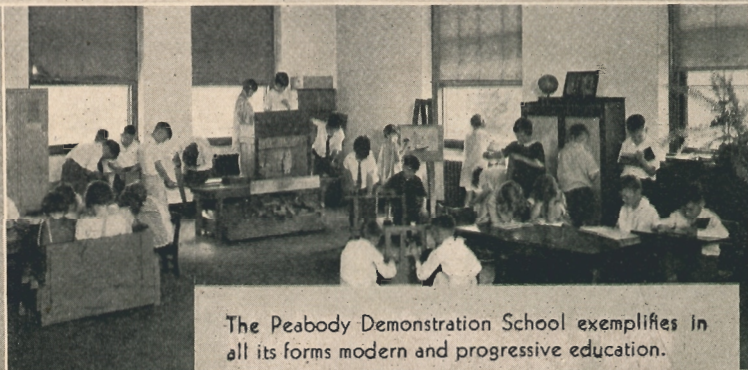
Located on the campus in its own new building, planned and built for that purpose, is the Peabody Demonstration School.



In the establishment and organization of the Demonstration School, two purposes have been kept in mind: First, To build, in the light of modern educational standards and ideals, the best school possible, giving first consideration to those activities which will make for the richest growth of the child, physically, socially, mentally, and morally.


Second, To provide for the students in all departments of the College, the very best observational privileges in educational procedure.





The Peabody Demonstration School exemplifies in all its forms modern and progressive education.



An aerial photograph of the George Peabody College for Teachers campus in 1914. The image shows a large, well-planned campus with numerous buildings, many featuring classical architectural styles with columns and porticos. The campus is surrounded by trees and greenery, with a prominent central lawn area. The buildings are arranged in a grid-like pattern, with some larger, more ornate structures and many smaller, rectangular buildings. The overall appearance is that of a well-maintained and organized educational institution.

Eleven new buildings have been completed since the College was reorganized on the new campus in 1914. A definite campus layout was planned before building was commenced.

**George Peabody College for Teachers** is located on one of the most beautiful college campuses in the country, comprising about 50 acres of ground. Extensive planting of trees and shrubbery gives abundant shade.