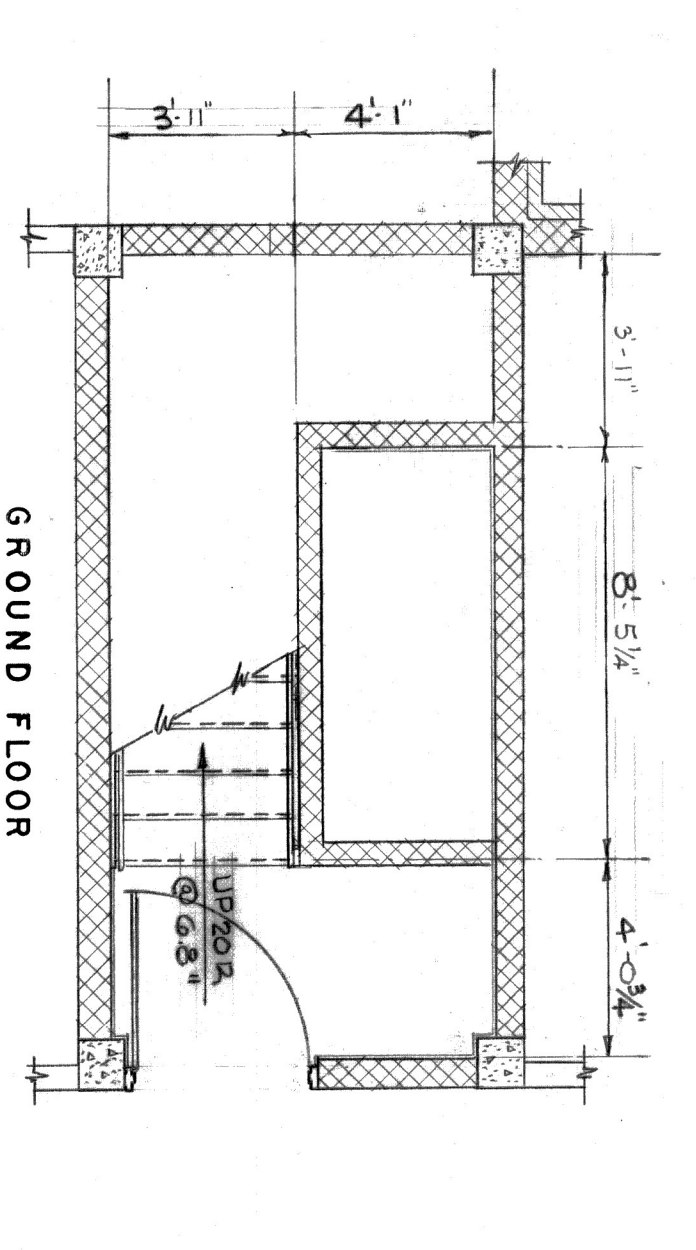
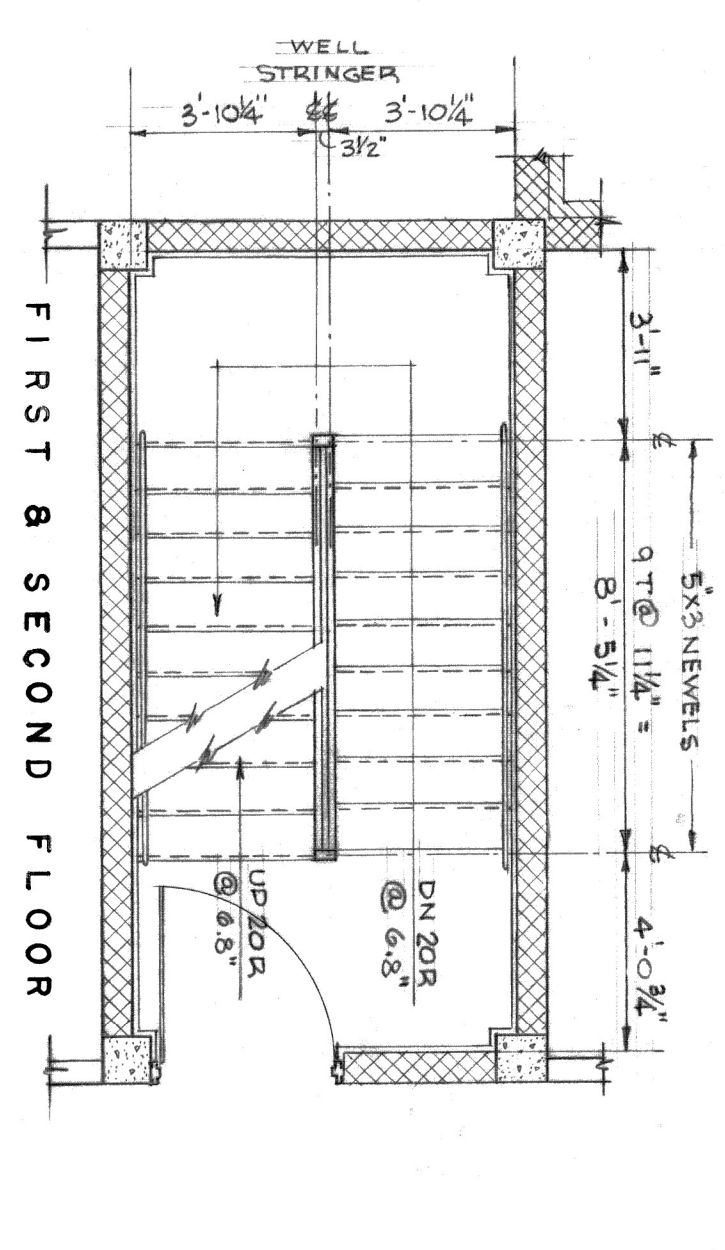
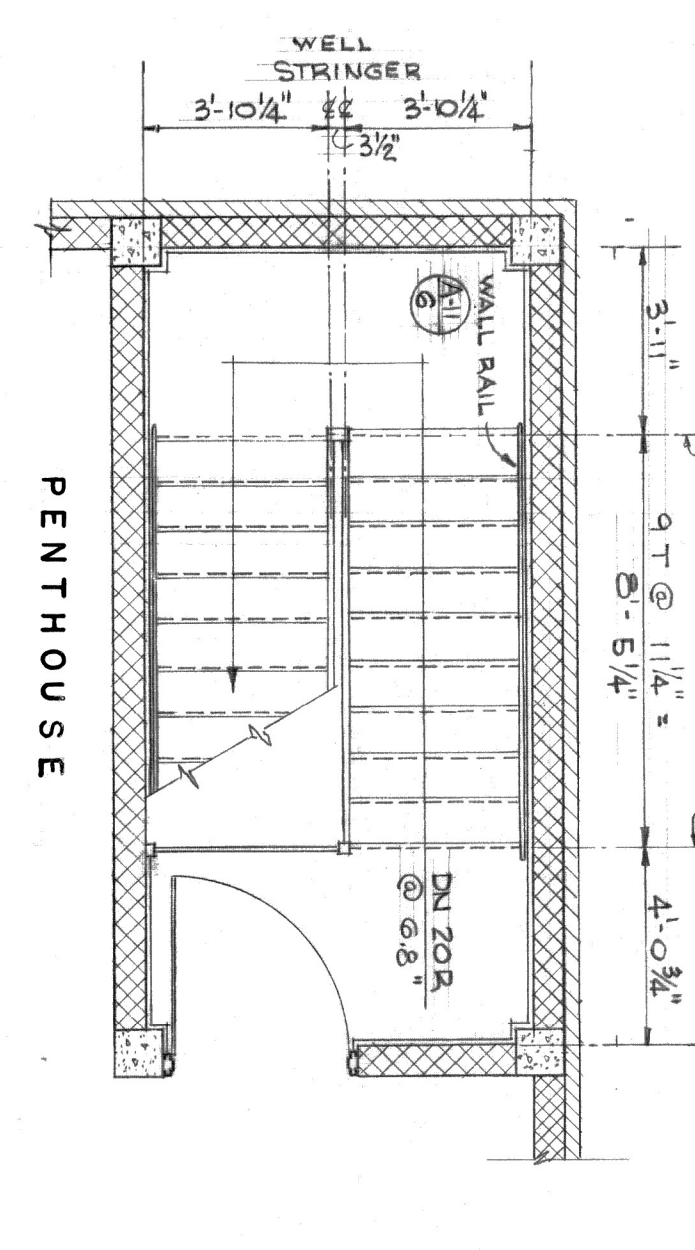
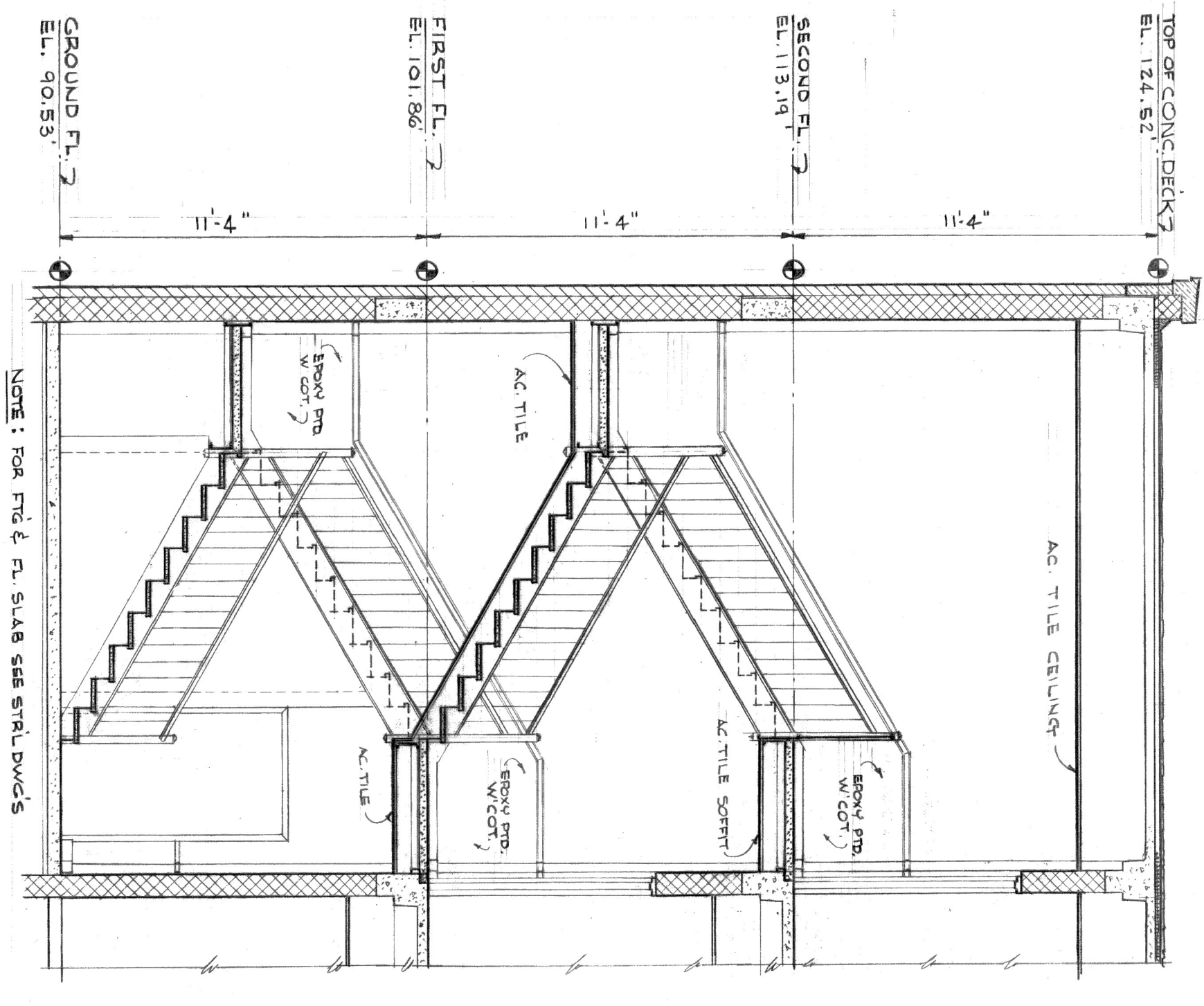


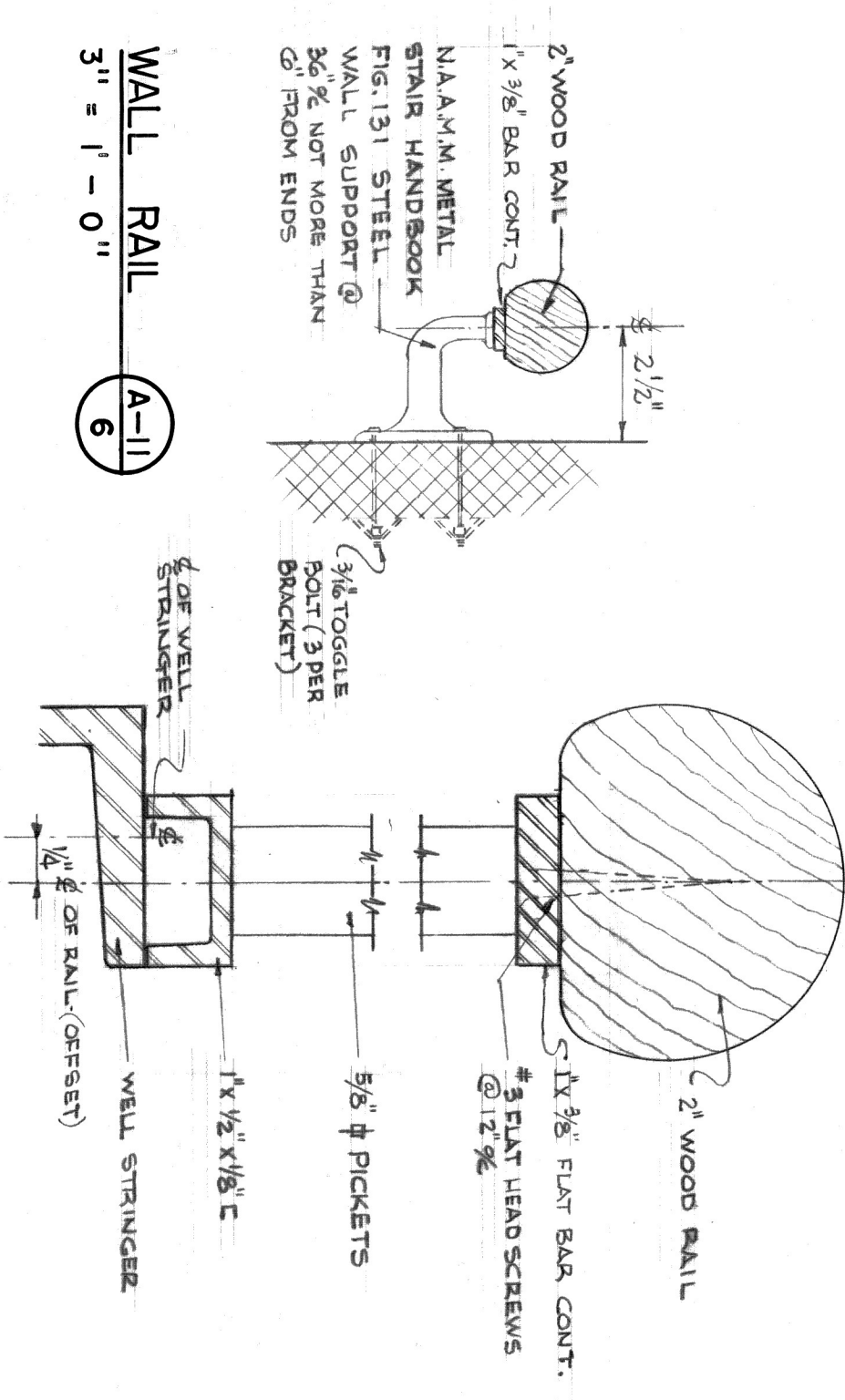
PLANS OF STAIR S-2 & S-4
1/4" = 1'-0"



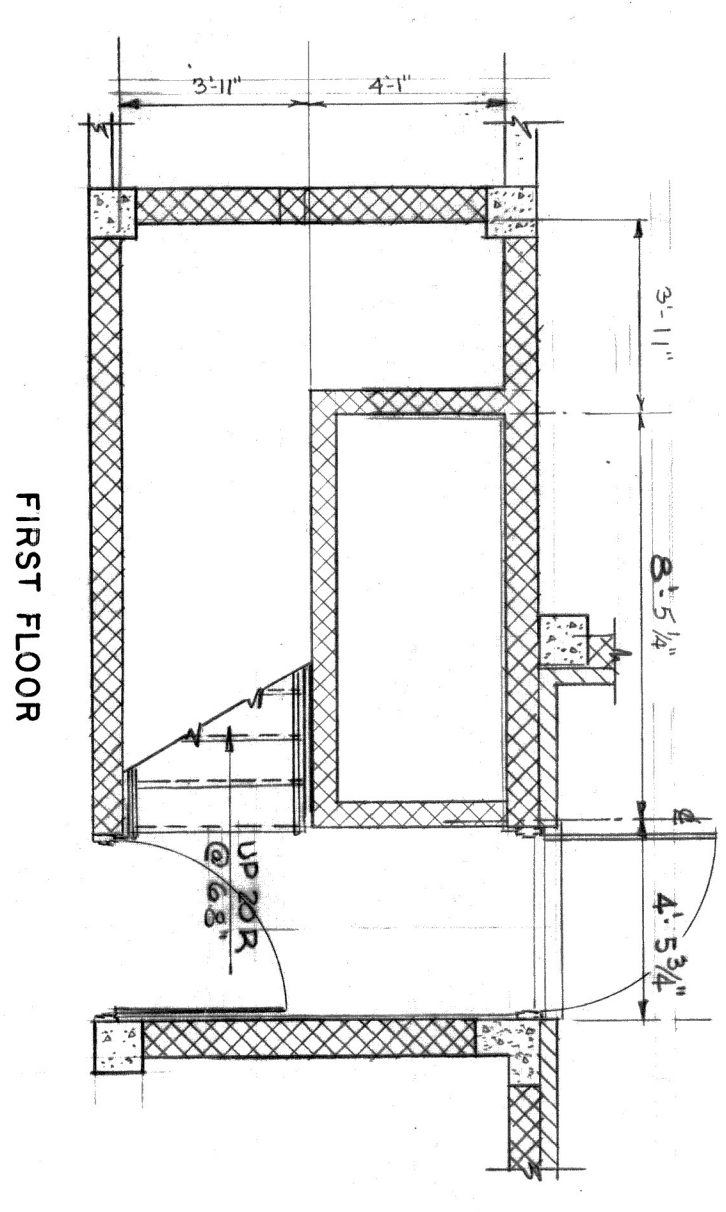
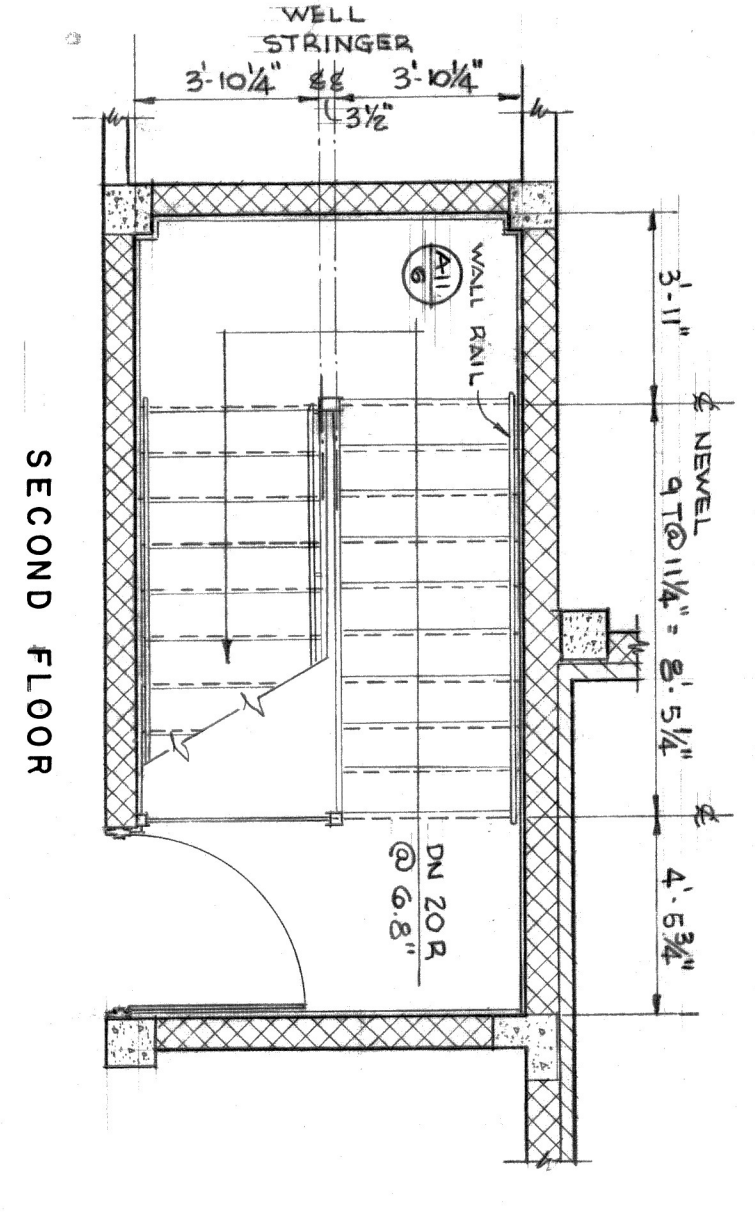
PLAN OF STAIR S-3
1/4" = 1'-0"



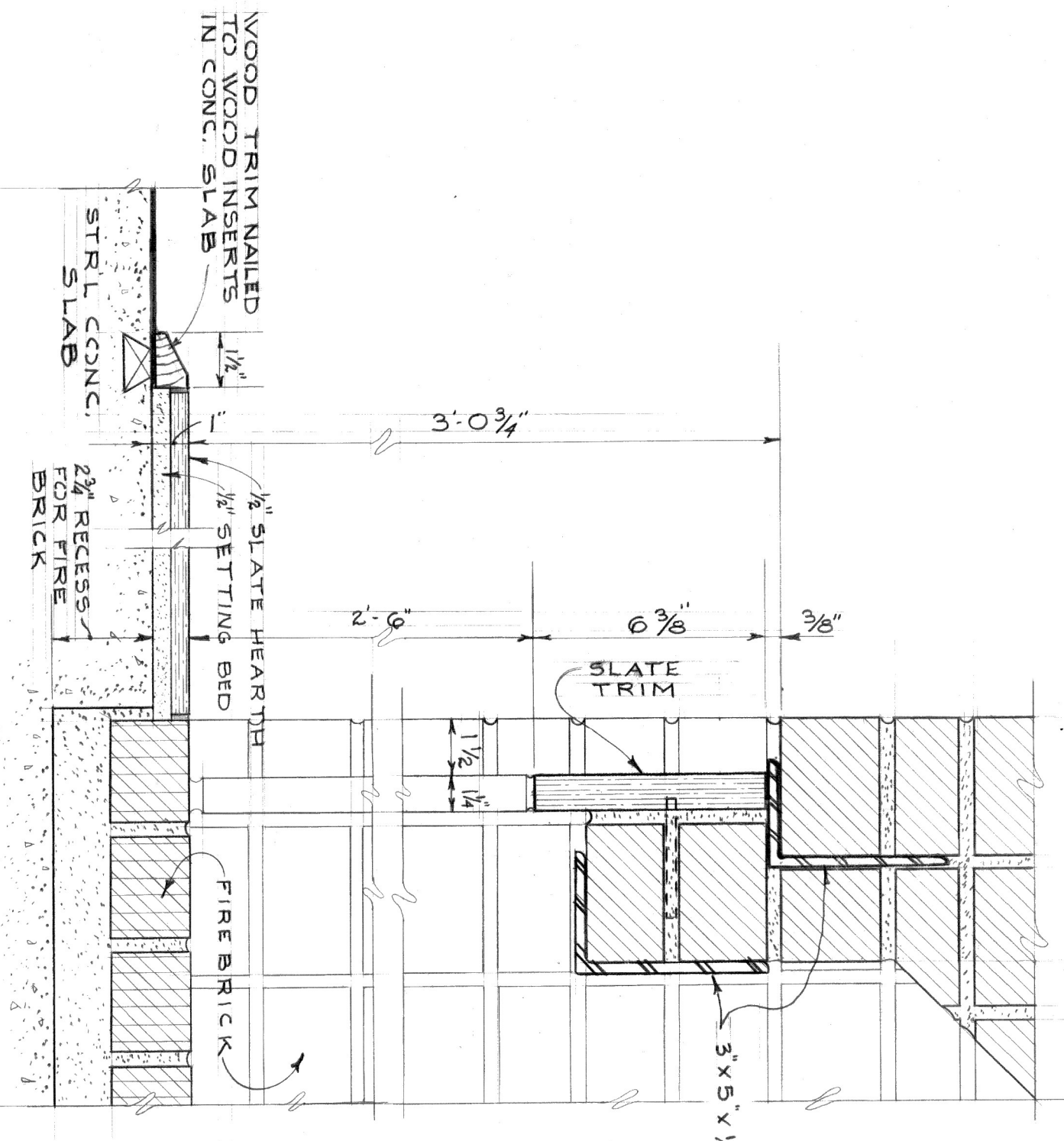
THRU STAIR S-2 & S-4
1/4" = 1'-0"



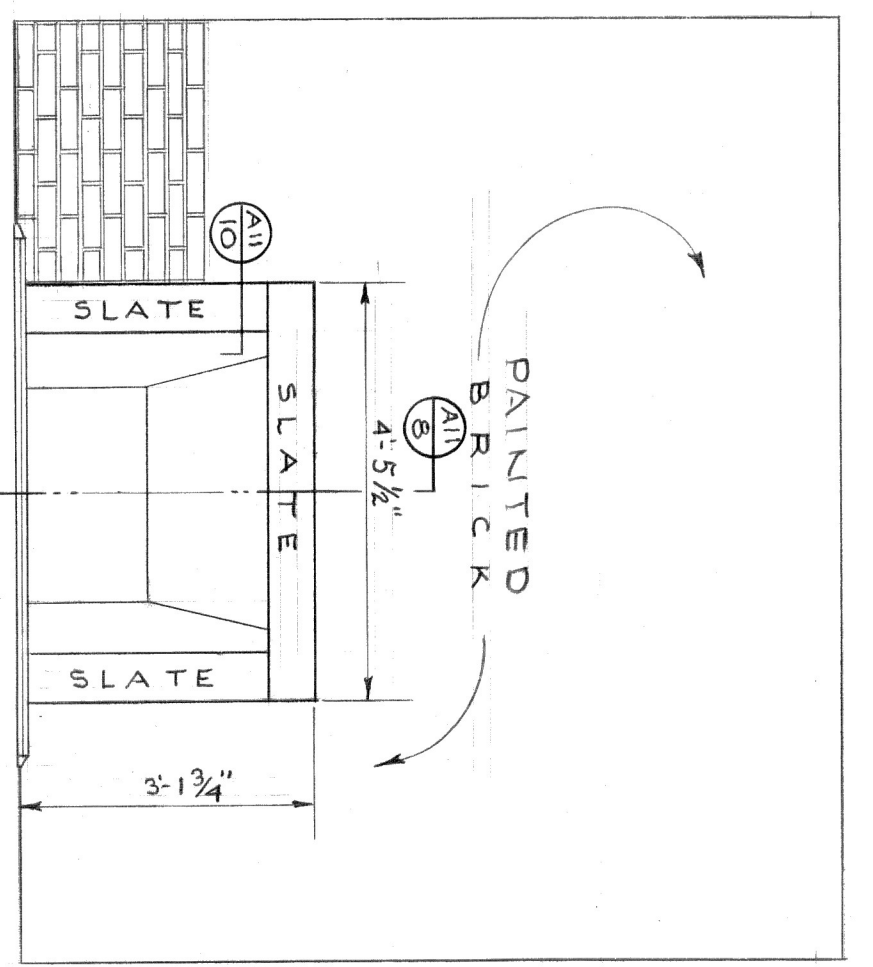
HANDRAIL DETAIL
FULL SIZE



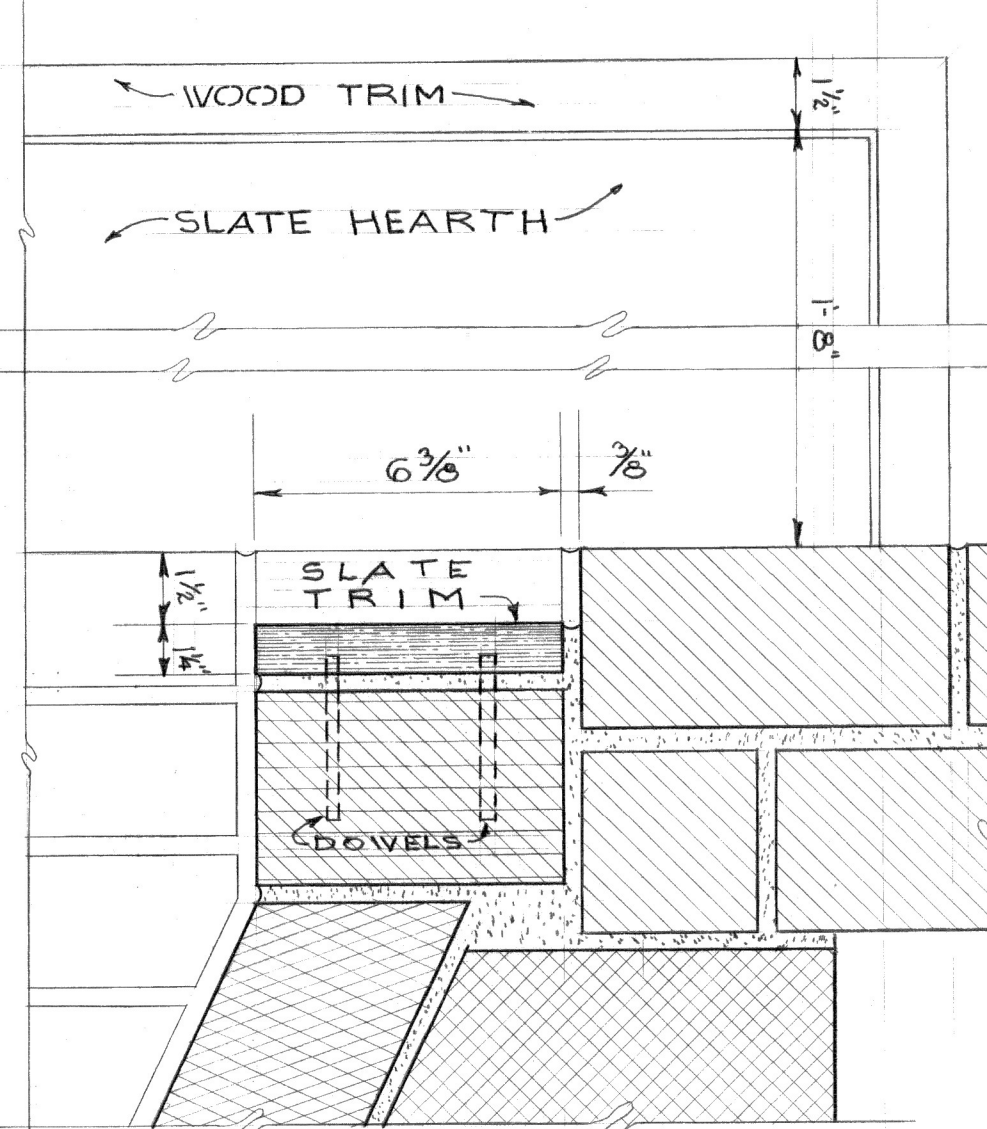
PLAN OF STAIR S-1
1/4" = 1'-0"



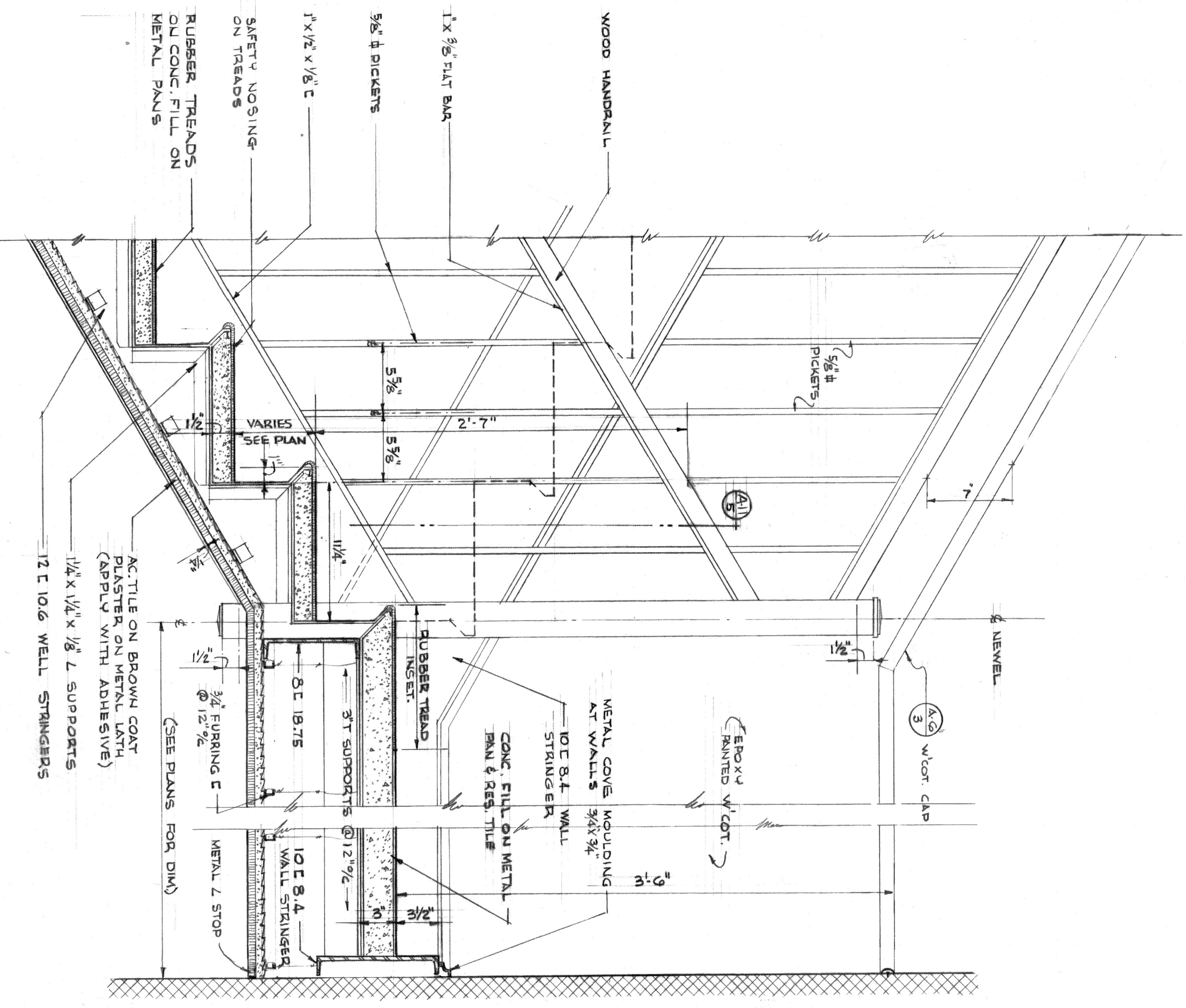
SECTION THRU FIREPLACE
3/8" = 1'-0"



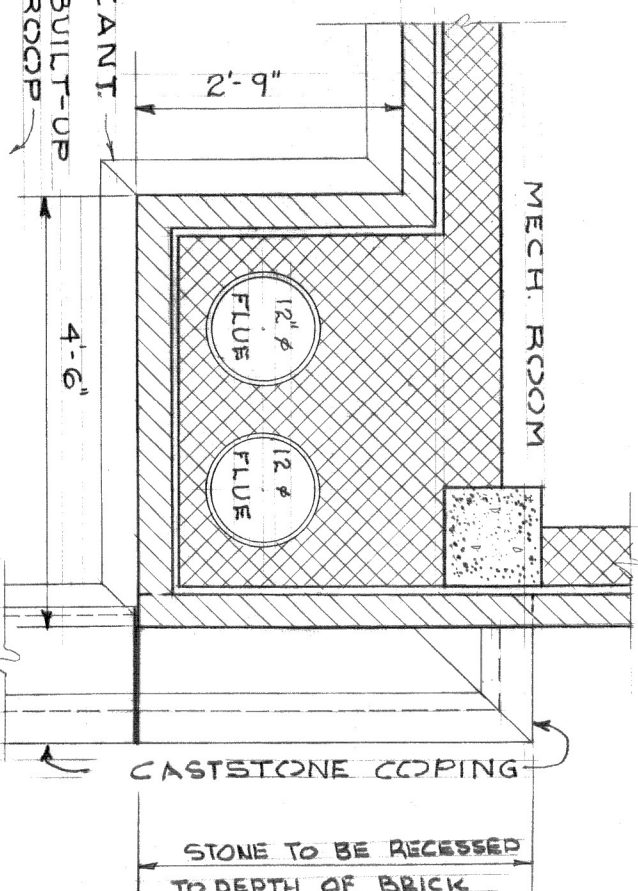
ELEVATION "A"
1/2" = 1'-0"



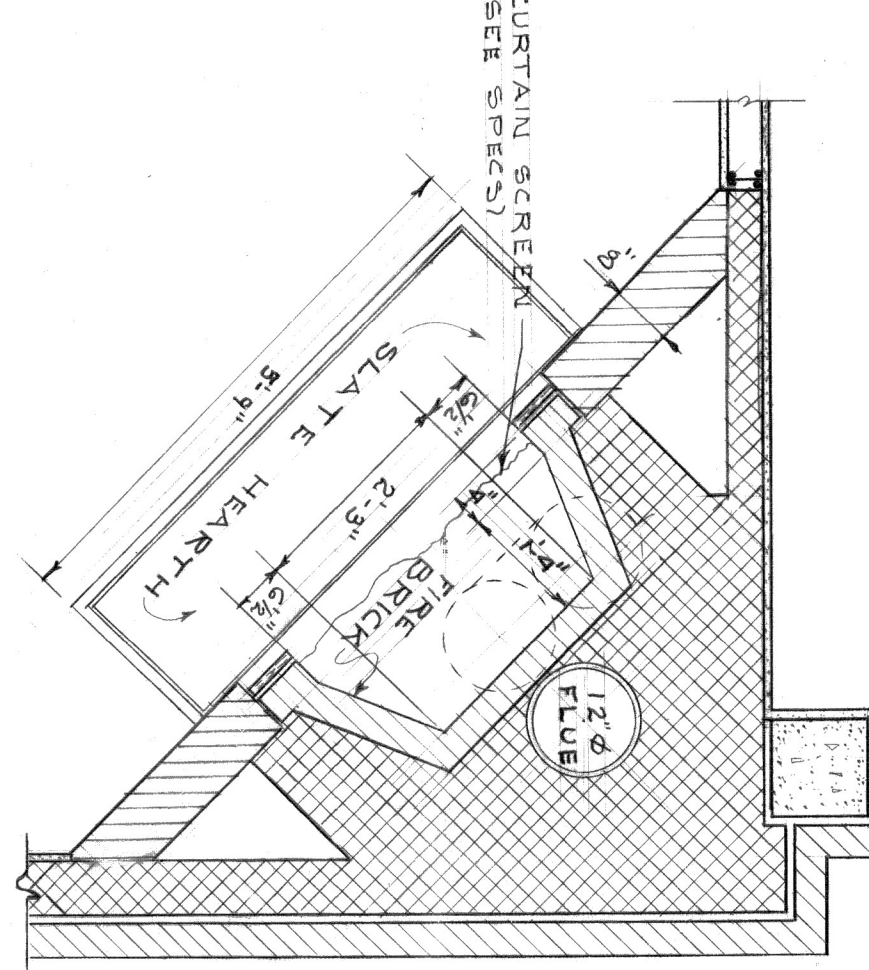
JAMB OF FIREPLACE
3/8" = 1'-0"



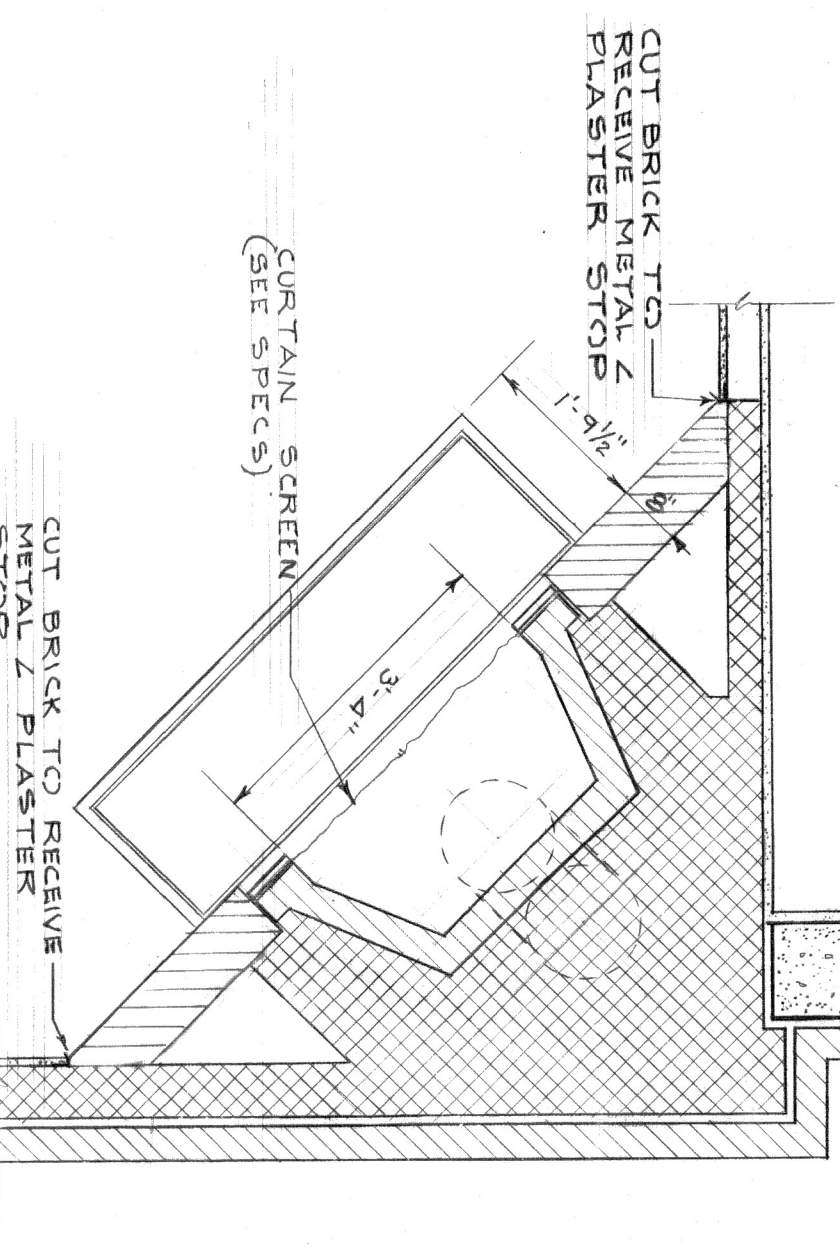
SECTION
1 1/2" = 1'-0"



CHIMNEY PLAN
1/2" = 1'-0"



SECOND FLOOR PLAN
1/2" = 1'-0"



FIRST FLOOR PLAN
1/2" = 1'-0"

FIRE PLACE DETAILS
SCALE: AS NOTED



PROJECT NO. VA-208
ALTERATIONS & ADDITIONS
TO
GUGGENHEIMER MEMORIAL
HOSPITAL
LYNCHBURG, VIRGINIA

DESIGNED BY	CLARK MESER & OWEN - ARCHITECTS
DATE	LYNCHBURG, VIRGINIA
DRAWN BY	STAIR DETAILS
CHECKED BY	DATE
DATE	NO. 513
SCALE	A-11