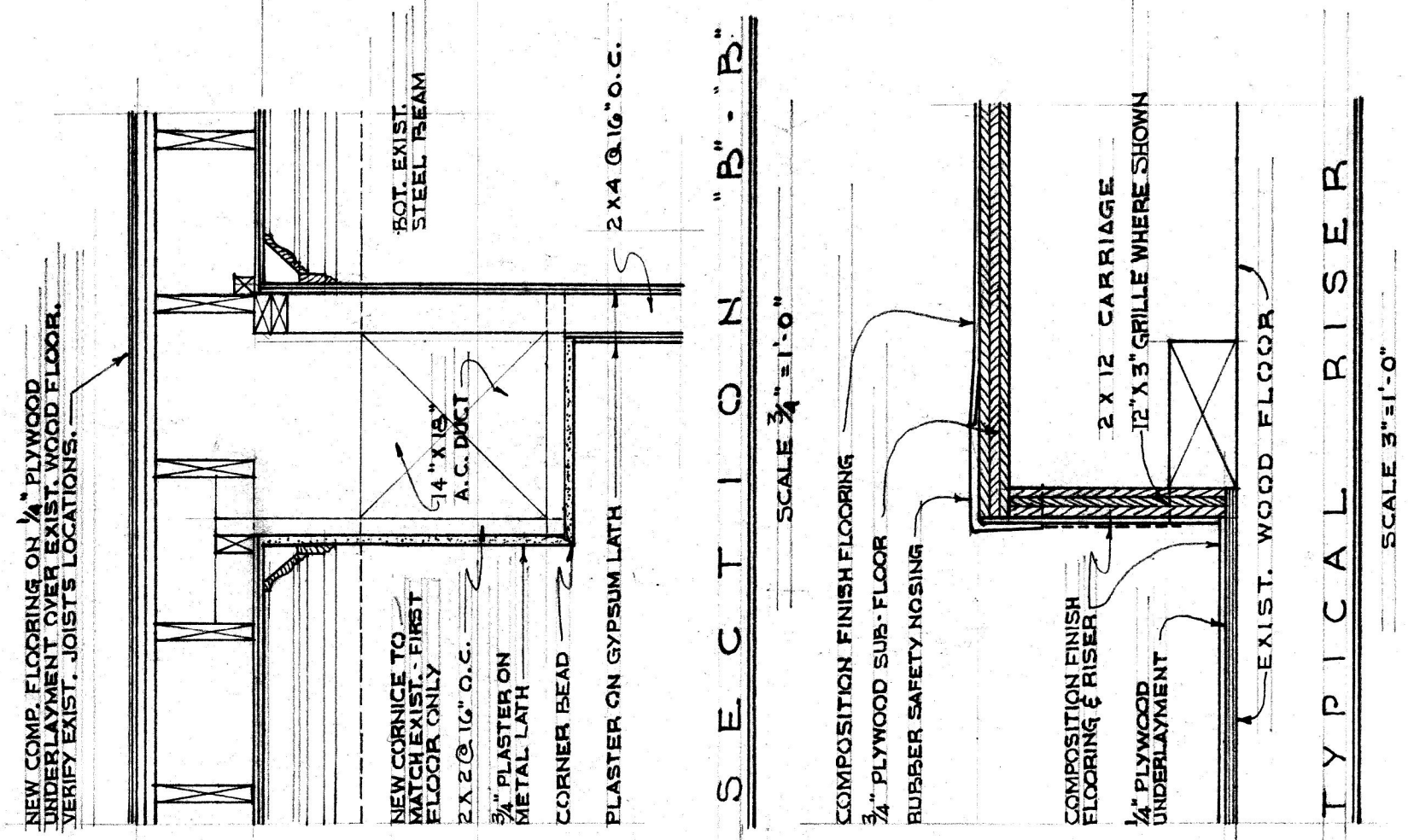
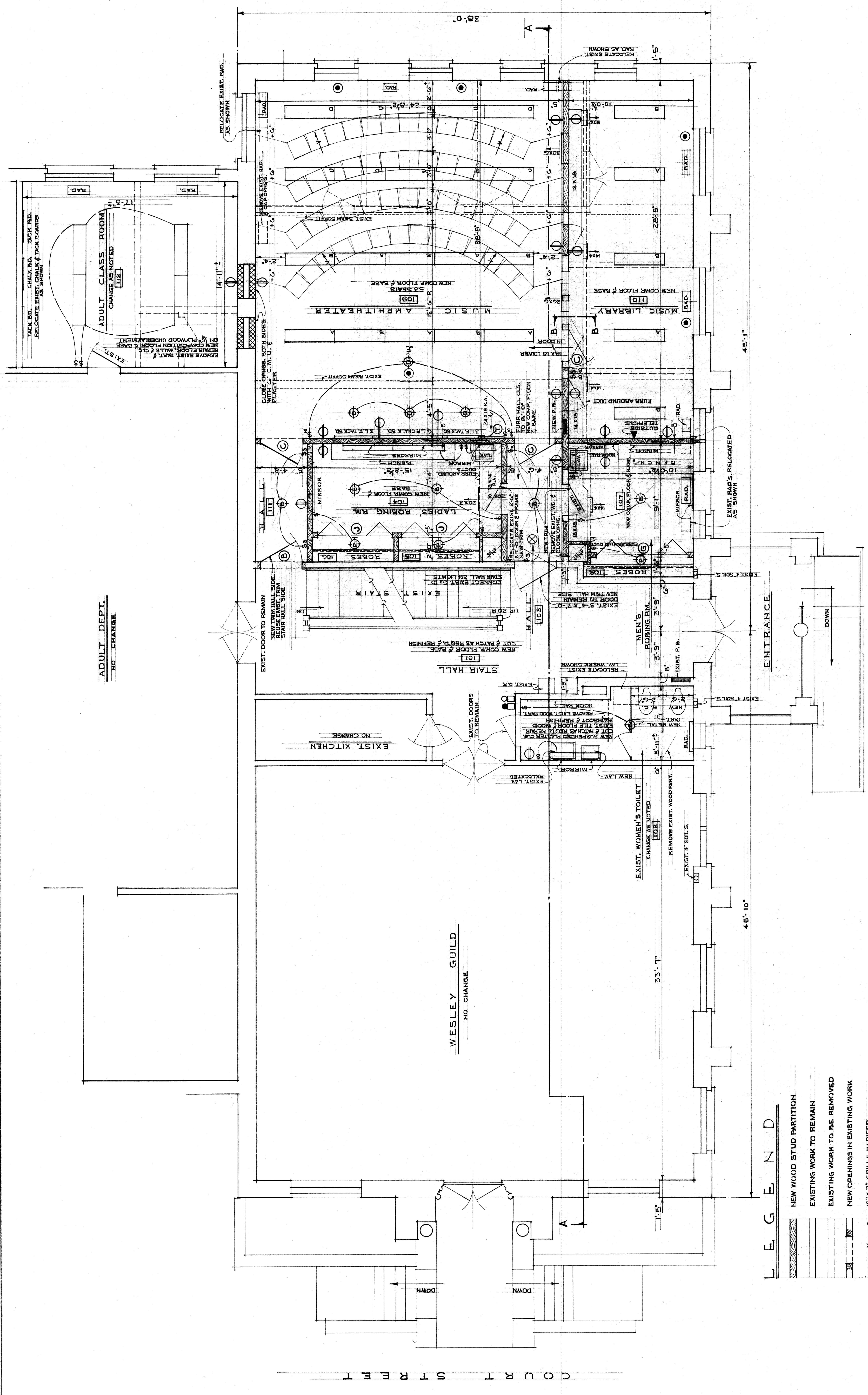


**ELECTRICAL SYMBOLS**

- LIGHTOLIER "OPTIFLEX" # 13542 - 2 - 40 WATT
- LIGHTOLIER "PRISMALUX" # 10234 - 2 - 40 WATT
- LIGHTOLIER "PRISMALUX" # 10232 - 2 - 20 WATT
- LIGHTOLIER "CALCULITE" # 4352 - 2 - 75 WATT
- LIGHTOLIER "CALCULITE" # 4351 - 2 - 60 WATT
- PORCELAIN BRACKET OUTLET - 100 WATTS
- PORCELAIN CEILING OUTLET - 100 WATTS
- LIGHTOLIER "ELLIPSOIDAL" # 7154 - 100 WATTS
- DUPLEX 110 VOLT CONVENIENCE OUTLET
- DUPLEX 110 VOLT FLOOR CONVENIENCE OUTLET
- SINGLE POLE SWITCH
- THREE WAY SWITCH
- JAMB SWITCH
- OUTSIDE TELEPHONE
- JANITOR'S CALL BELL & RETURN - CONNECT TO EXISTING SYSTEM
- CLASS BELL - CONNECT WITH EXISTING SYSTEM
- EXIT LIGHT - KIPLIN # 3506 B (RED LIGHT)



**FIRST FLOOR PLAN**  
SCALE 1/4" = 1'-0"  
NEW COMPOSITION FLOOR & BASE WHERE NOTED

**LEGEND**

- NEW WOOD STUD PARTITION
- EXISTING WORK TO REMAIN
- EXISTING WORK TO BE REMOVED
- NEW OPENINGS IN EXISTING WORK
- 12" X 3" GRILLE IN RISER
- NEW CONCRETE MASONRY UNIT (C.M.U.) WALL