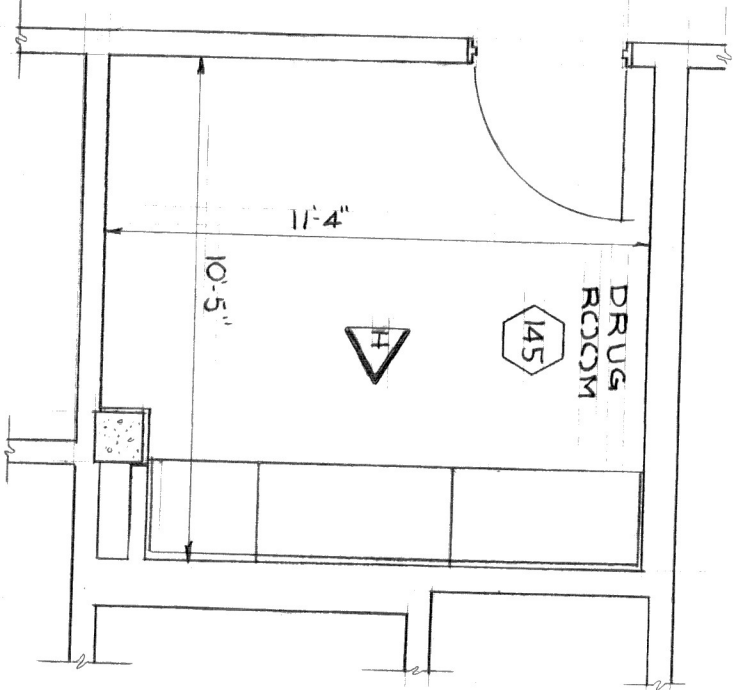
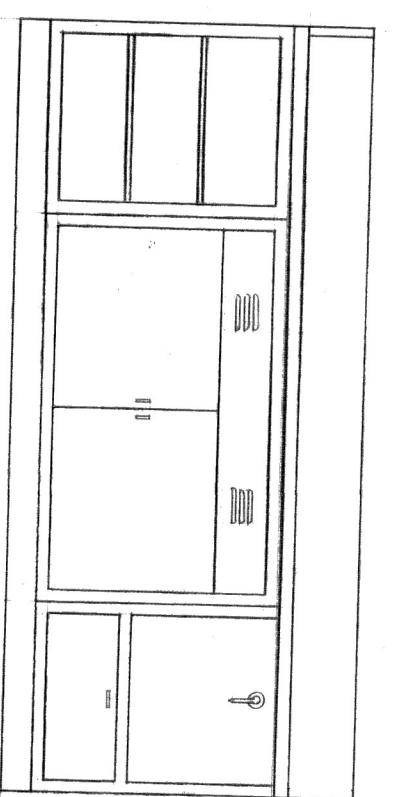


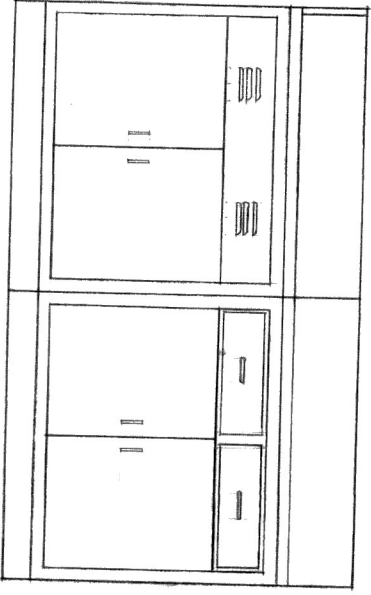
PLAN OF SPACES
150, 250, 151, 251, 152 & 252
1/4" = 1'-0"



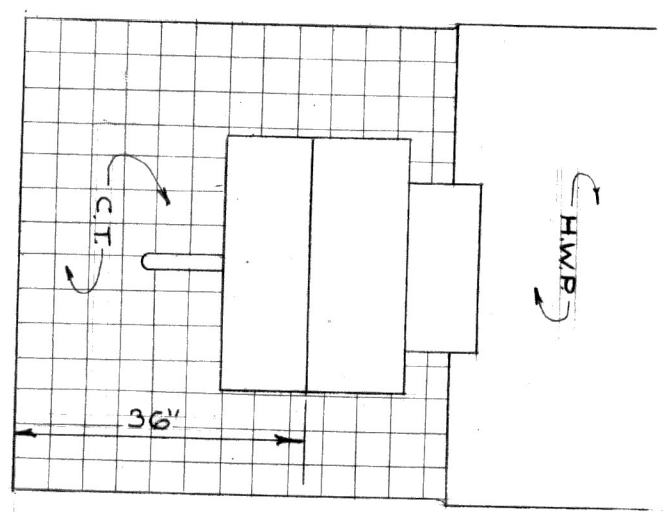
PLAN OF ROOM 145
1/4" = 1'-0"



ELEVATION "A" ITEM 1
1/2" = 1'-0"



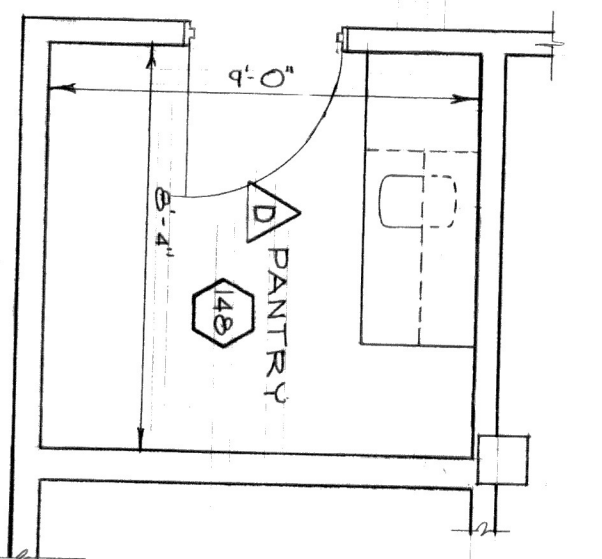
ELEVATION "B" ITEM 2
1/2" = 1'-0"



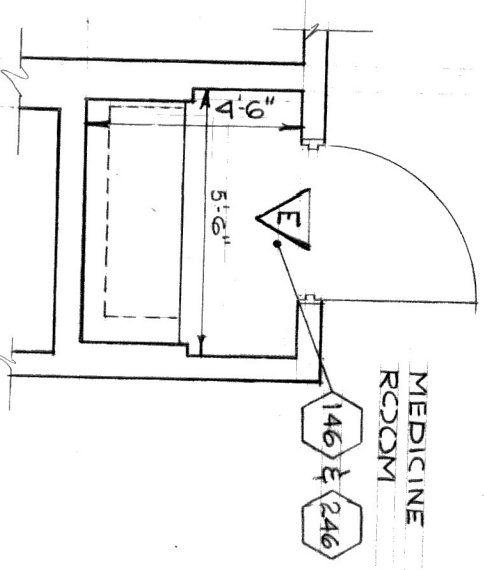
ELEVATION "C" ITEM 3
1/2" = 1'-0"



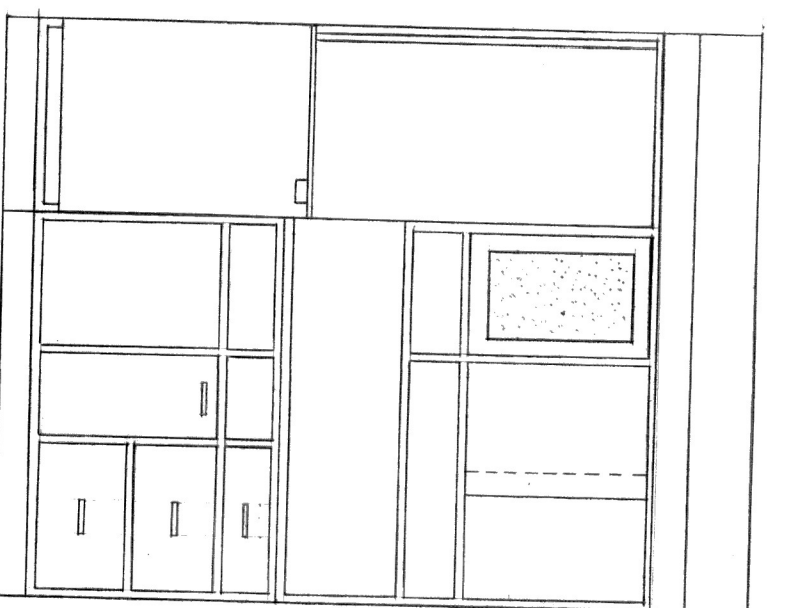
ELEVATION "H" ITEM 8
1/2" = 1'-0"



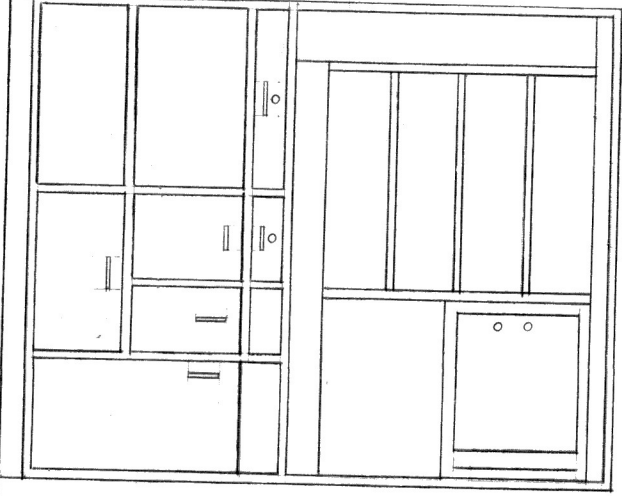
PLAN SPACE 148
1/4" = 1'-0"



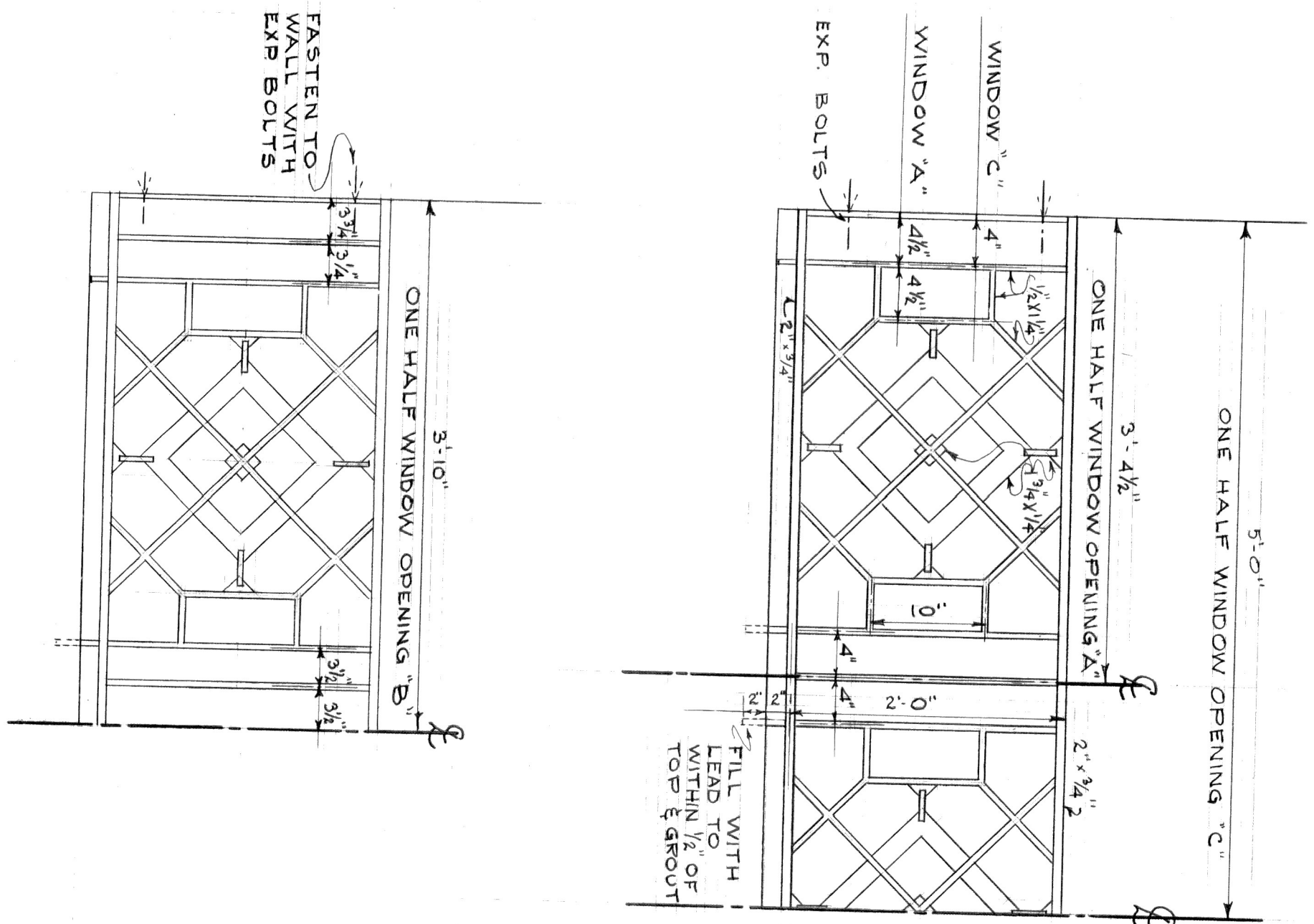
PLAN OF SPACES
146 & 246
1/4" = 1'-0"



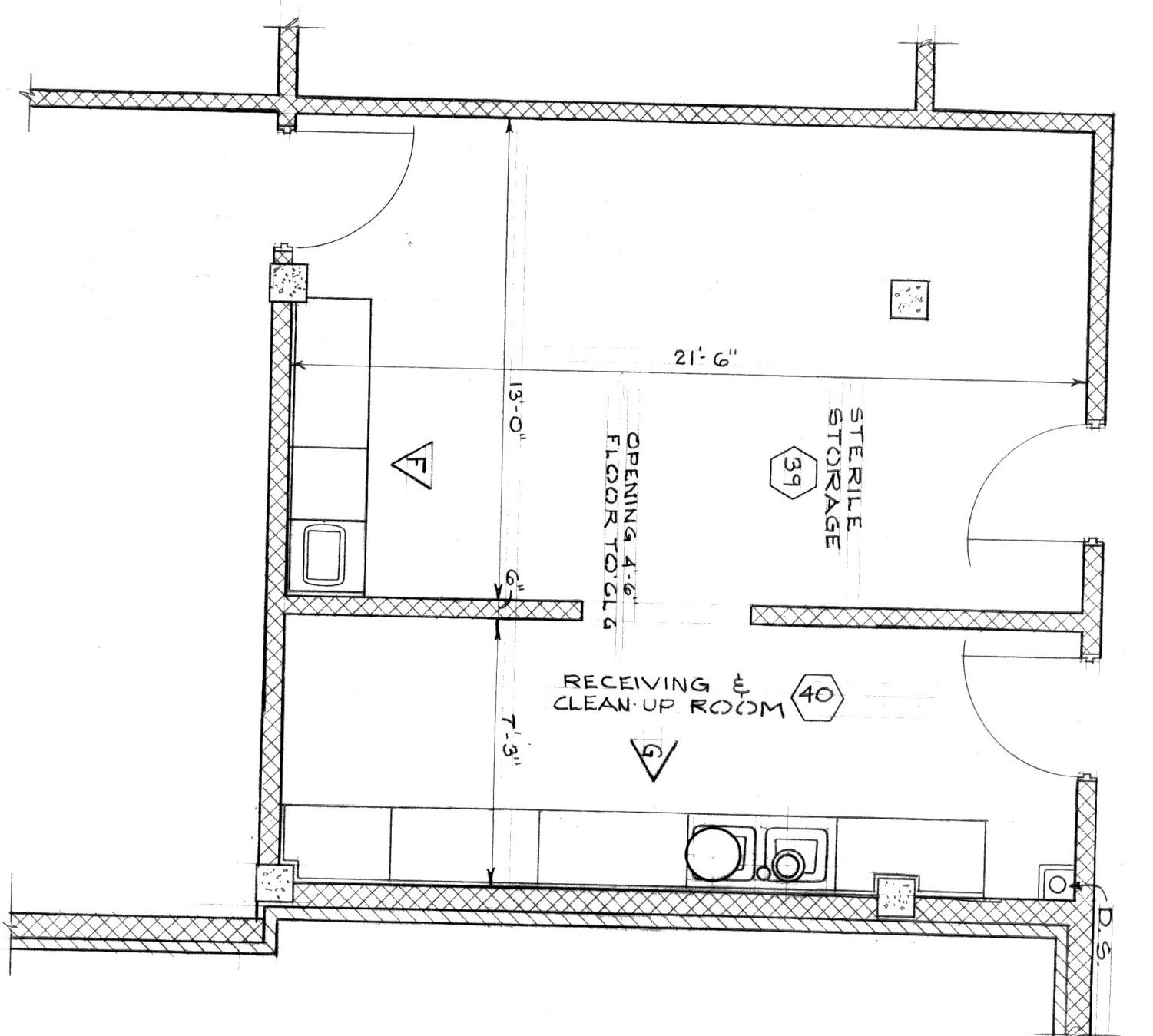
ELEVATION "D" ITEM 4
1/2" = 1'-0"



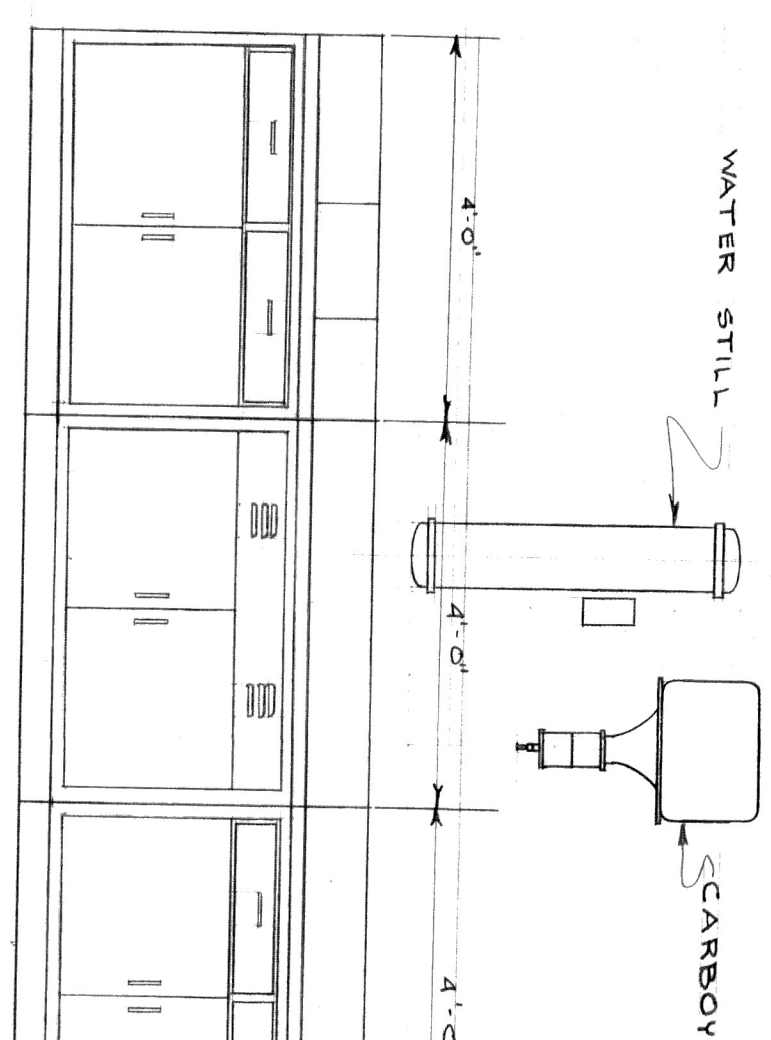
ELEVATION "E" ITEM 5
1/2" = 1'-0"



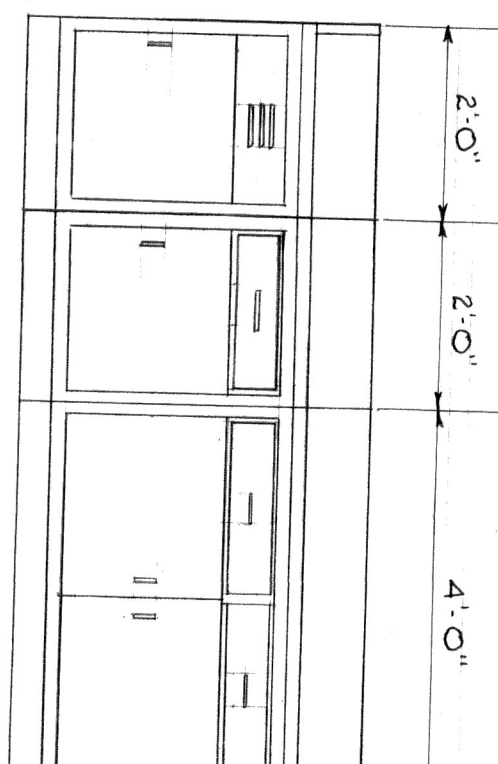
METAL RAILING ELEVATIONS
1" = 1'-0" (A-10)



PLAN OF SPACES 39 & 40
1/4" = 1'-0"



ELEVATION "G" ITEM 7
1/2" = 1'-0"



ELEVATION "F" ITEM 6
1/2" = 1'-0"



PROJECT NO. VA-208
ALTERATIONS & ADDITIONS
TO
GUGGENHEIMER MEMORIAL
HOSPITAL
LYNCHBURG, VIRGINIA

CLARK, NIXSEN & OWEN - ARCHITECTS
LYNCHBURG, VIRGINIA
NORFOLK, VIRGINIA

SPECIAL EQUIPMENT
DATE: JAN. 1958 (AS NOTED)
SCALE: AS SHOWN
DRAWN BY: S.W.D.
CHECKED BY: S.F.L.
DWG. NO.: A-10