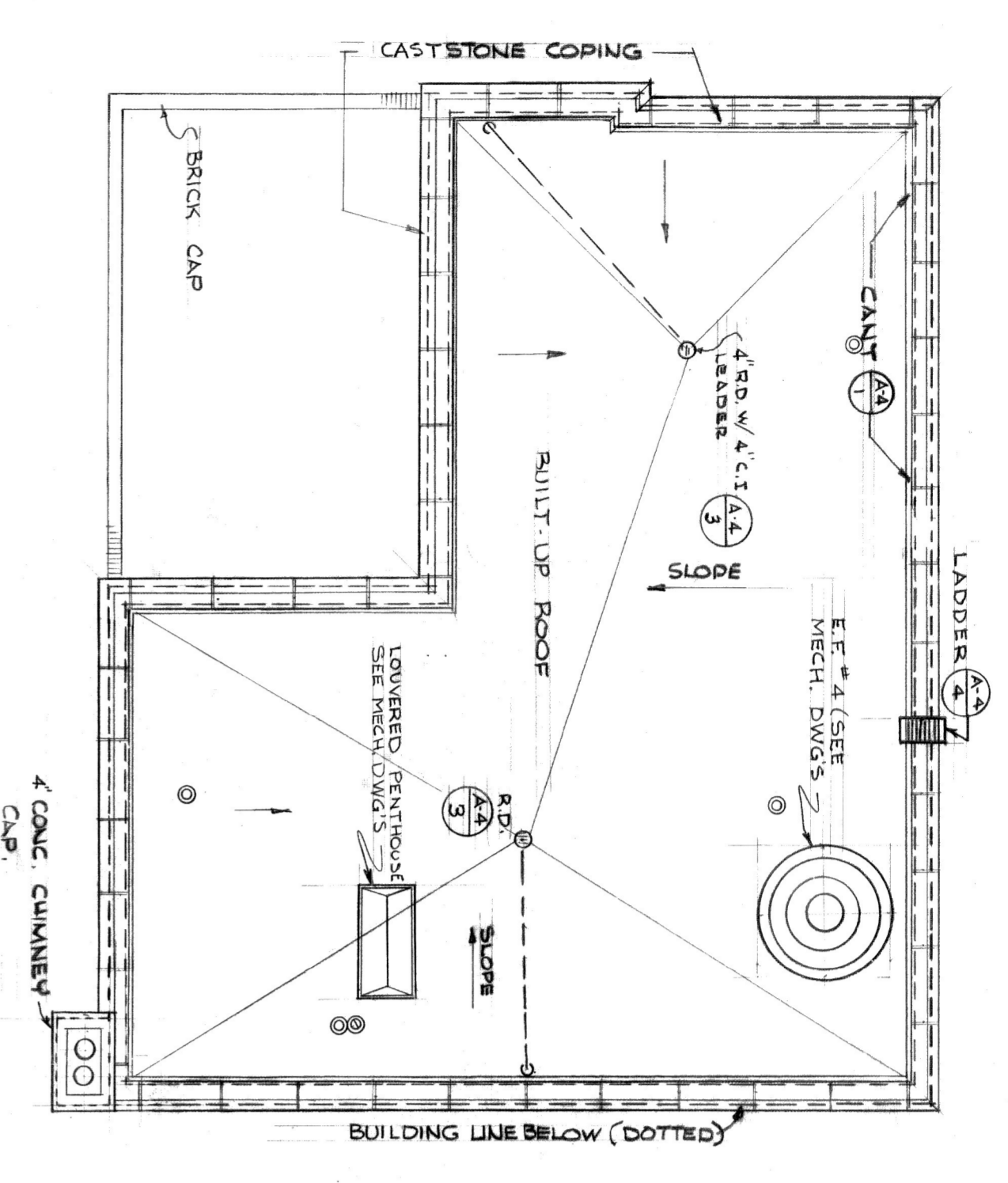
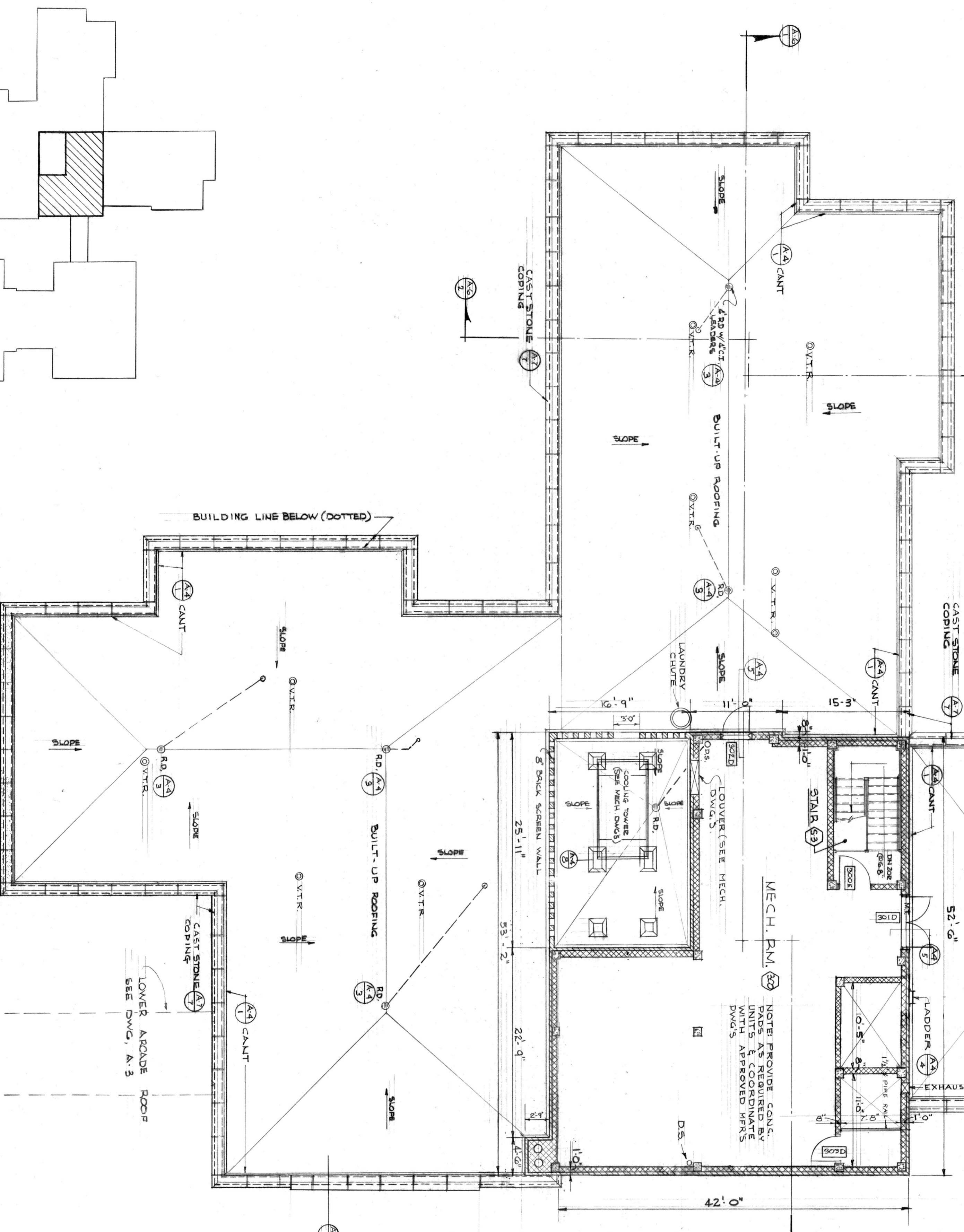


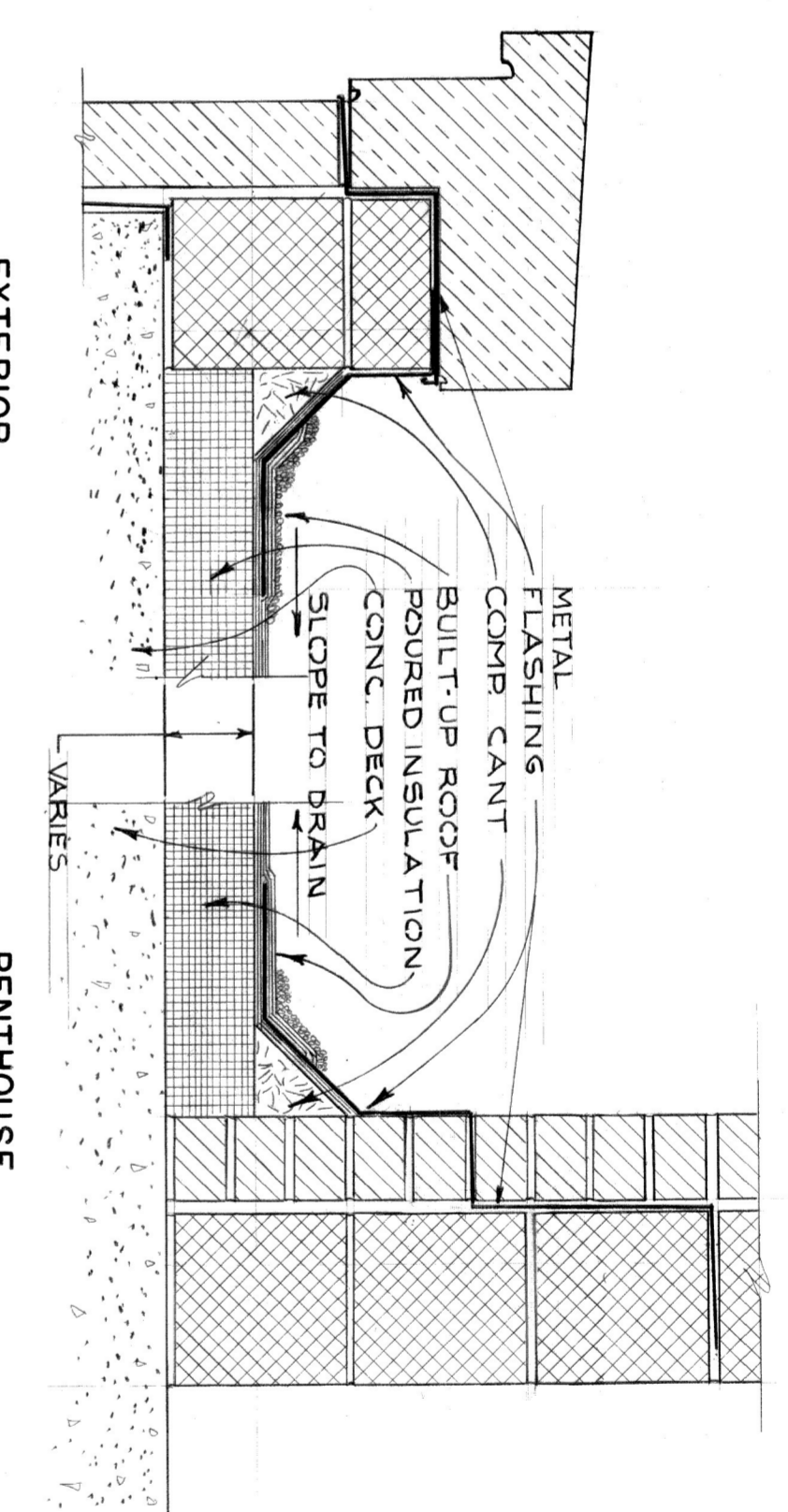
FINISH SCHEDULE		DETAILS & REMARKS					
SPACE NO.	SPACE NAME	FLOOR	BASE	WALLS	WCOT	CEILING	CEILING HEIGHT
300	MECHANICAL RM	CONC	NONE	PAINTED	W/UP	EXPOSED	12'-4"
5.3	STAIR	V.A.T	METAL	H.W.P.	3'-0" HANG	SPRINTS	8'-0"



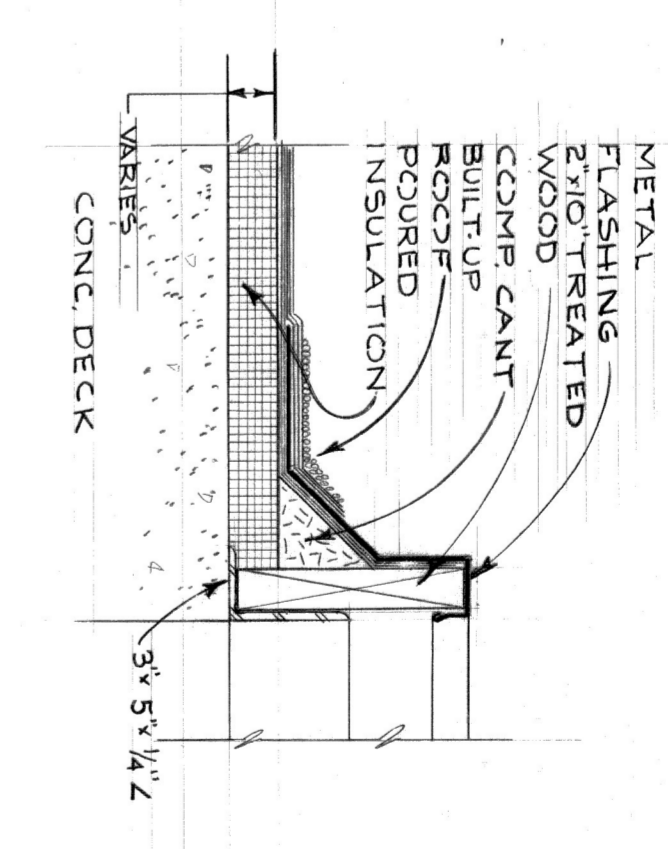
PENTHOUSE ROOF PLAN
1/8" = 1'-0"



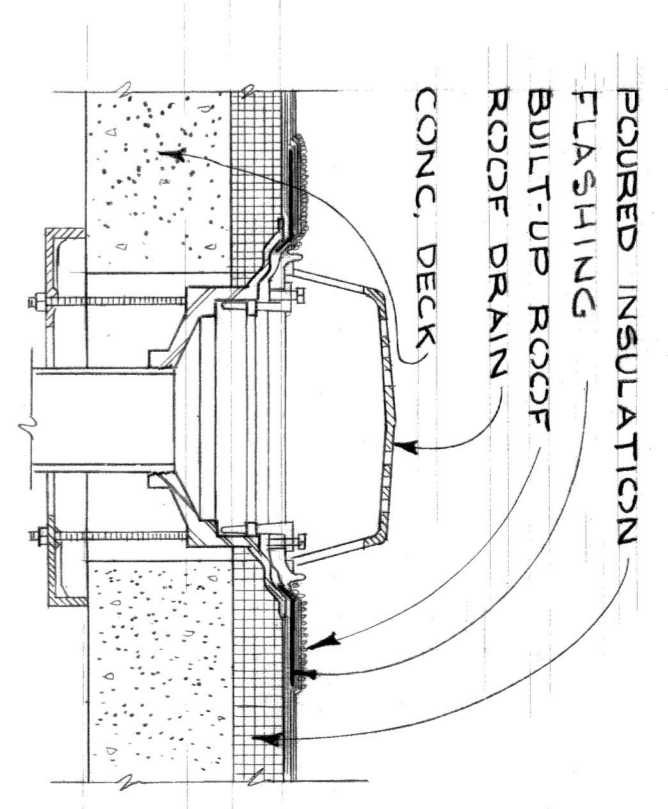
KEY PLAN



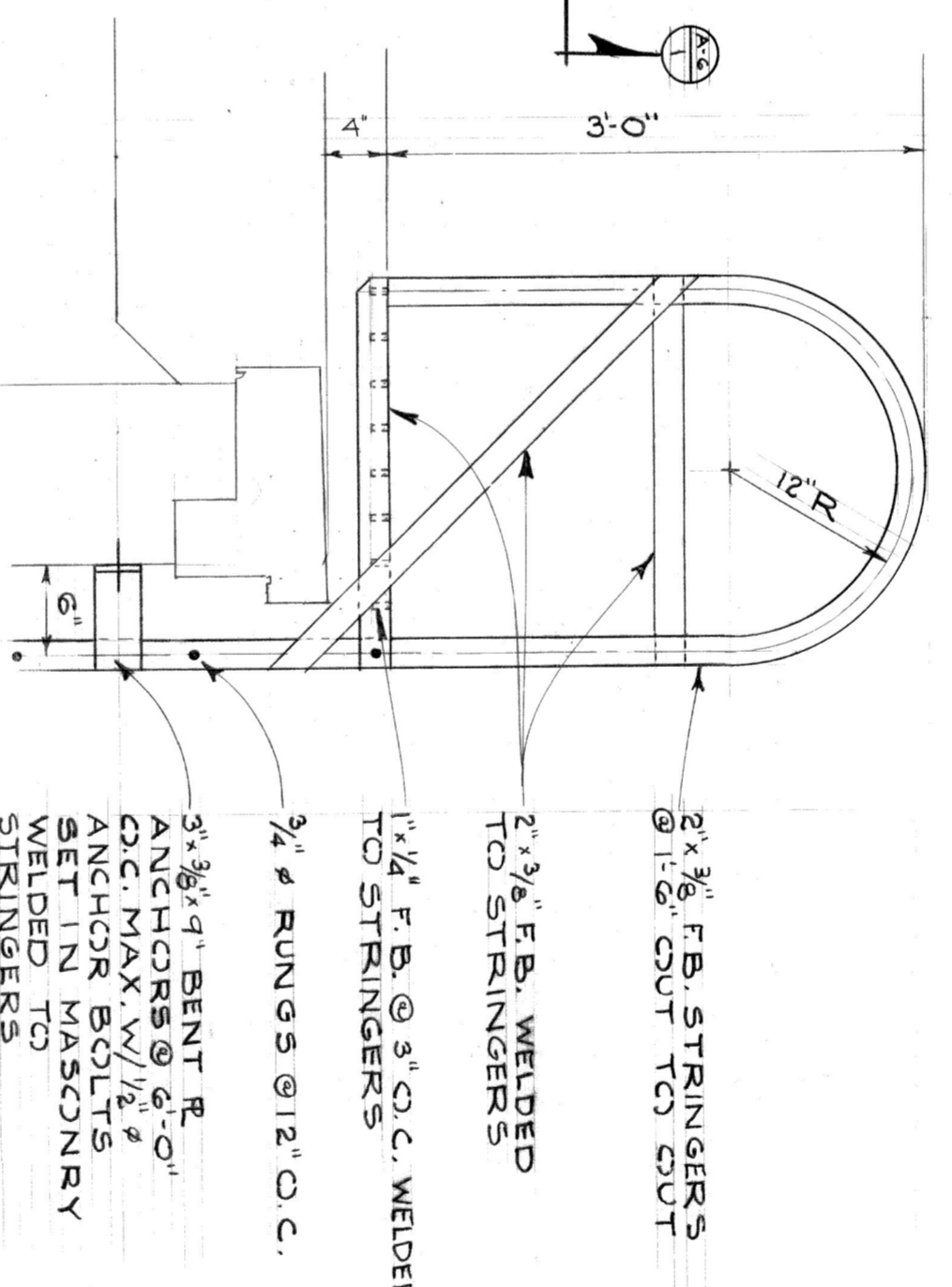
TYPICAL CANT DETAIL
1/2" = 1'-0"



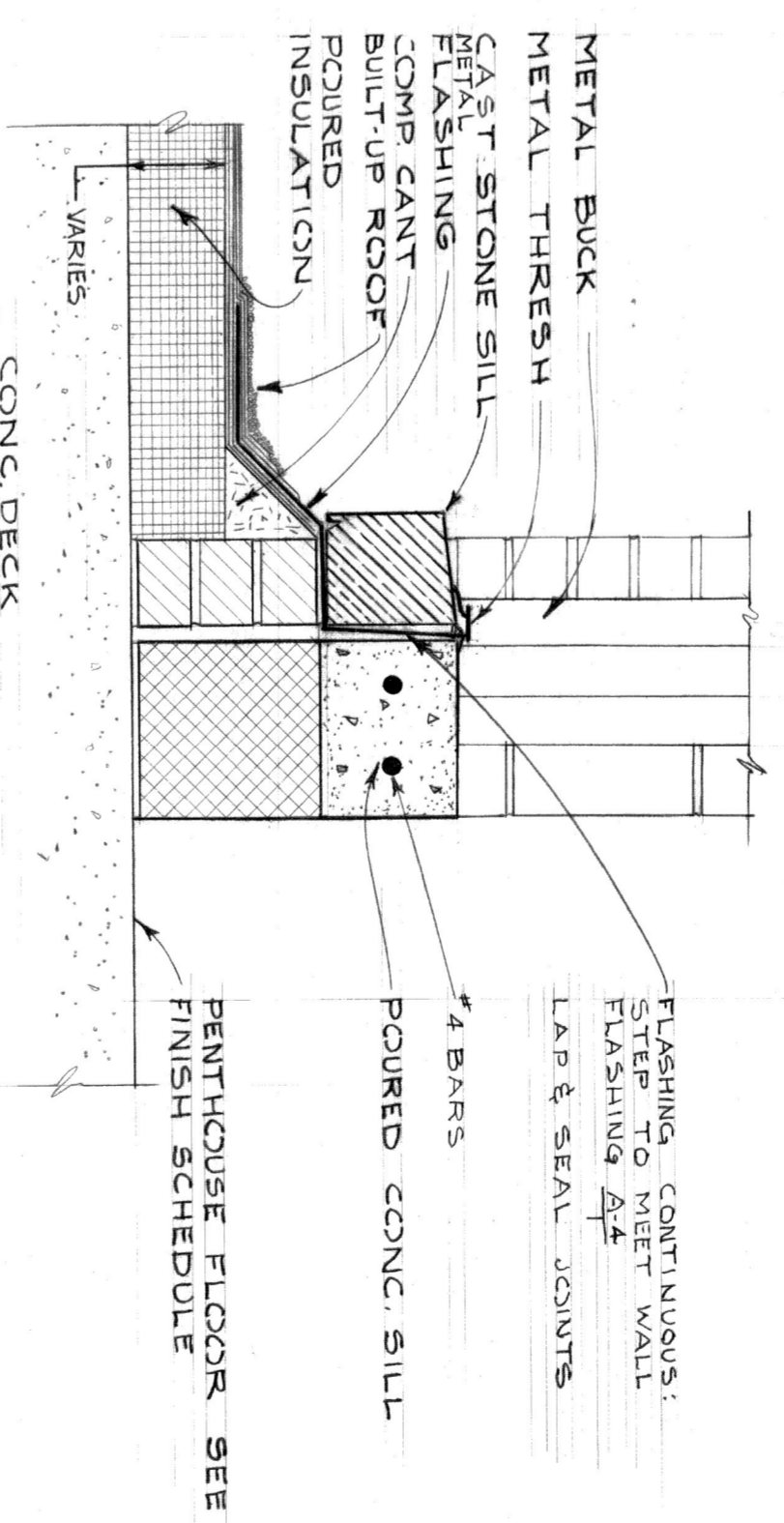
TYPICAL ROOF OPENING
1 1/2" = 1'-0"



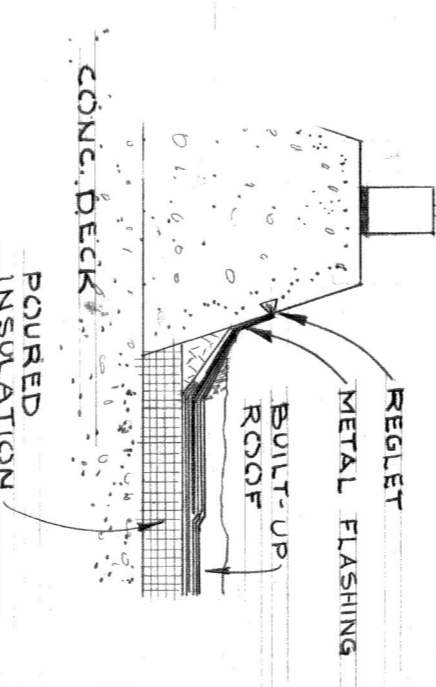
ROOF DRAIN
1 1/2" = 1'-0"



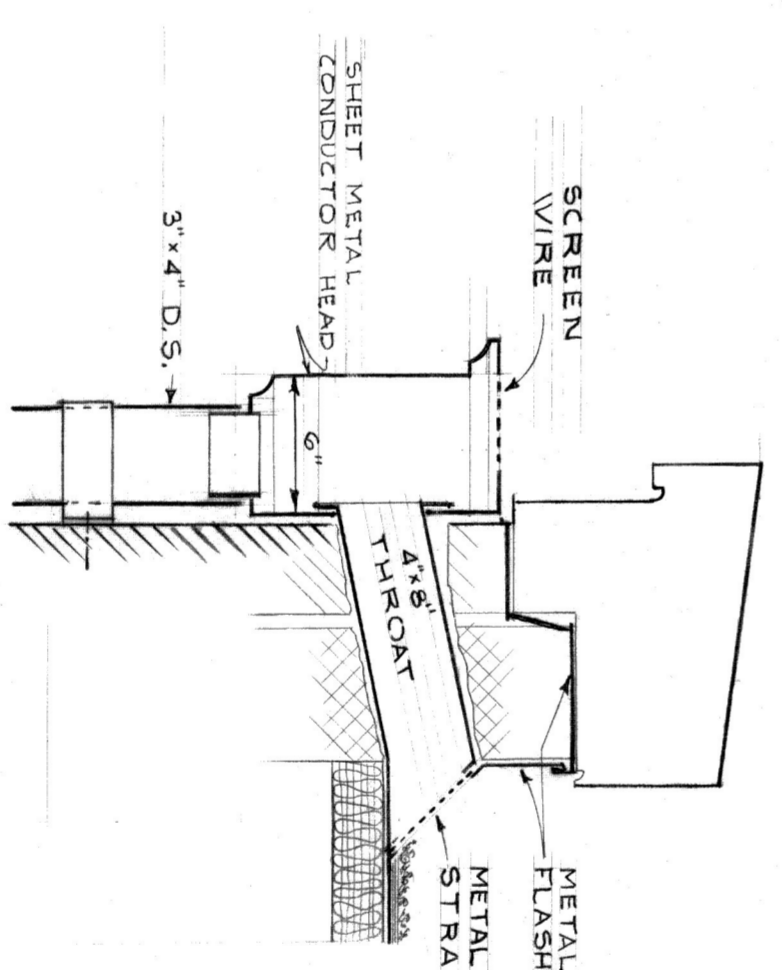
STEEL LADDER DETAIL
1" = 1'-0"



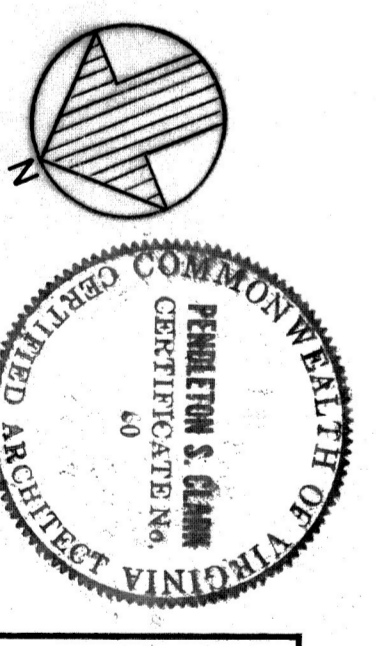
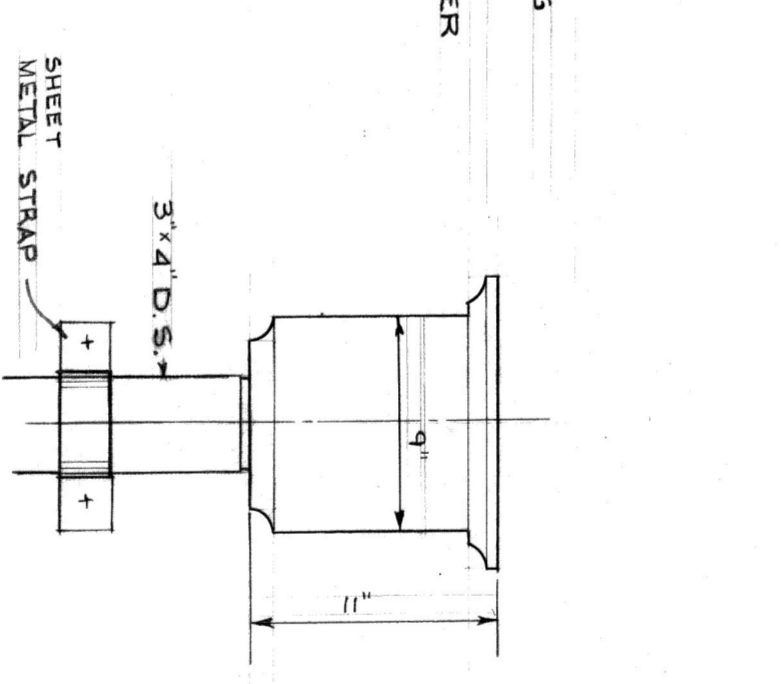
SILL AT DOOR 301 & 302
1 1/2" = 1'-0"



PEDESTAL FLASHING DETAIL
3/4" = 1'-0"



CONDUCTOR HEAD & DOWN SPOUT DETAIL
1 1/2" = 1'-0"



PROJECT NO. VA-208
ALTERATIONS & ADDITIONS TO GUGGENHEIMER MEMORIAL HOSPITAL LYNCHBURG, VIRGINIA
CLARK NEXSEN & OWEN - ARCHITECTS
LYNCHBURG, VIRGINIA
MONROE, VIRGINIA
NOVEMBER 1988
DATE: JAN. 1988
SCALE: AS NOTED
DRAWN BY: S.W.D.
CHECKED BY: C.L.B.
DWG. NO.: A-4