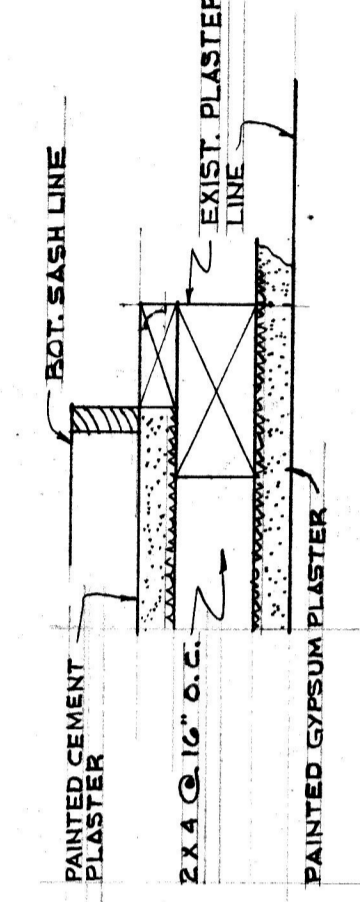


SENIOR DEPT.
NO CHANGE

SECOND FLOOR PLAN

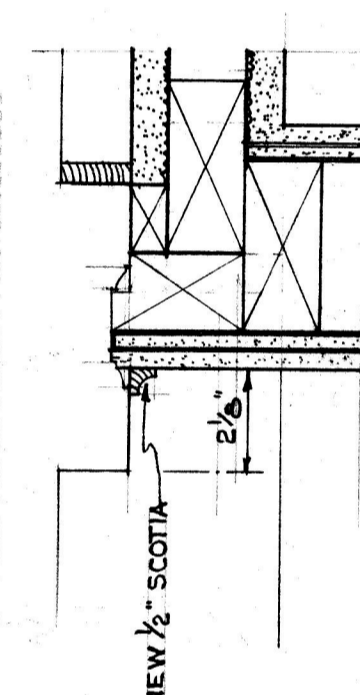
SCALE 1/4" = 1'-0"
NEW COMPOSITION FLOOR BASE OVER 1/2" PLYWOOD UNDERLAYMENT



SECTION 2-2

DUMMY WINDOW DETAILS

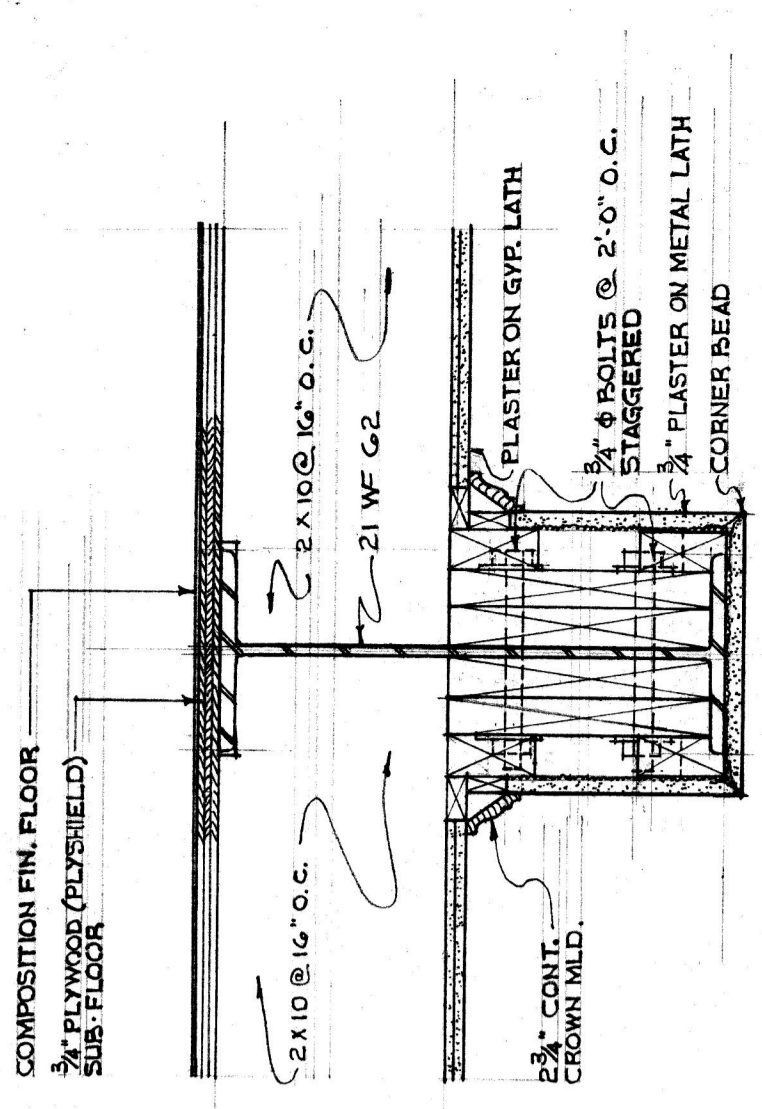
SCALE 3/8" = 1'-0"



SECTION 1-1

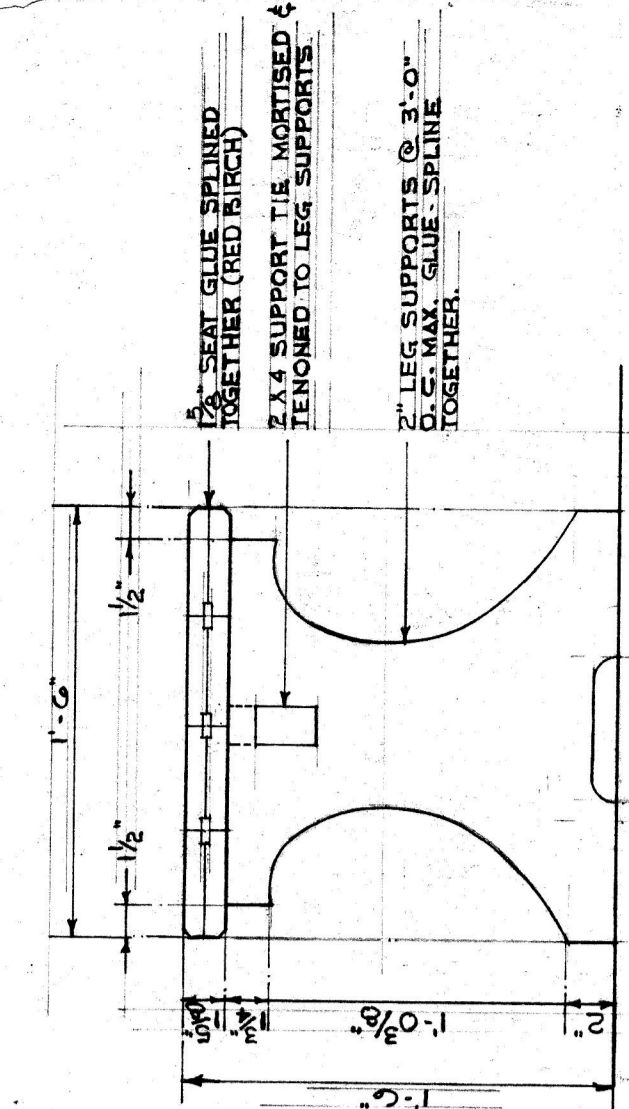
DUMMY WINDOW DETAILS

SCALE 3/8" = 1'-0"



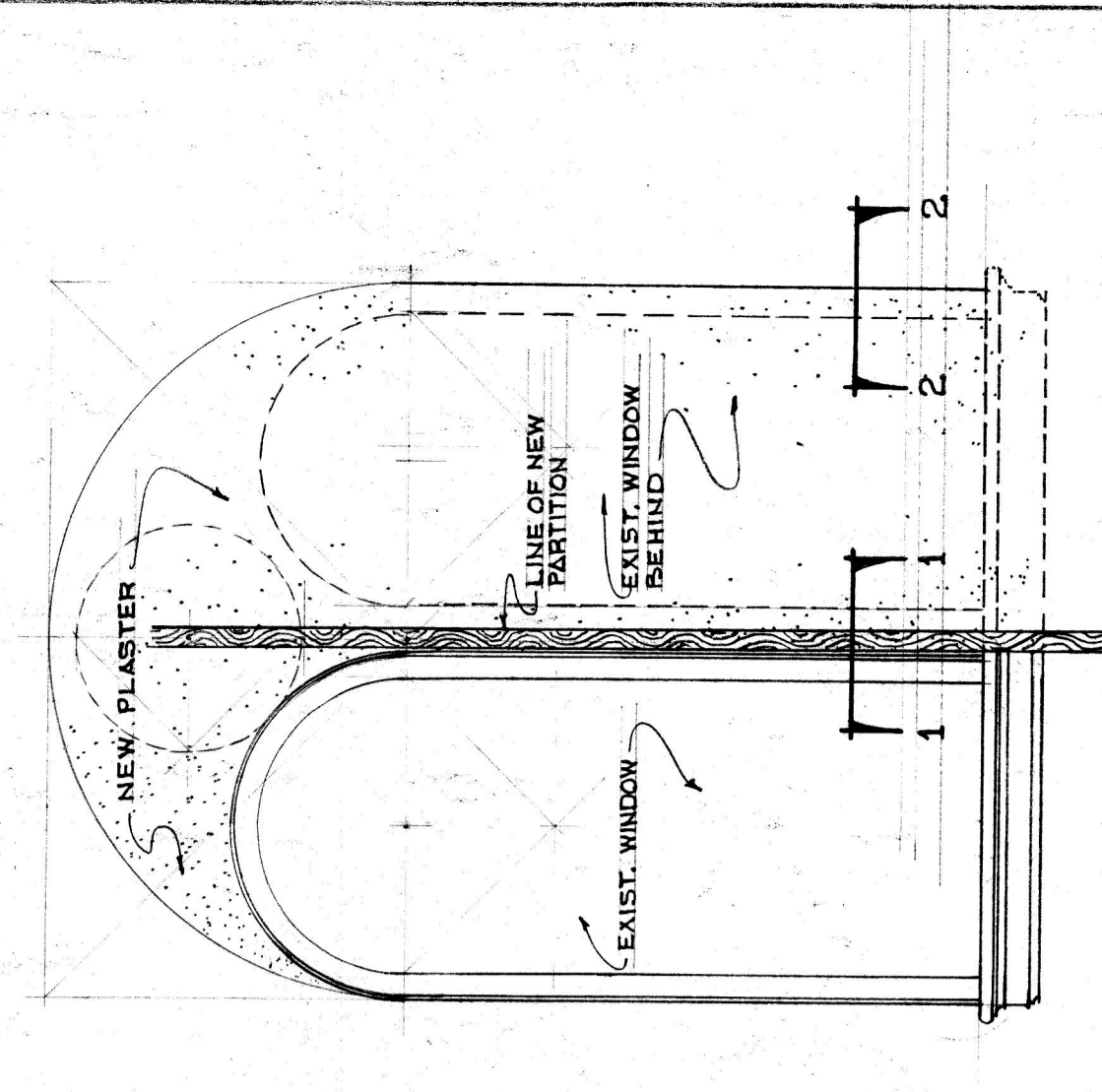
S E C T I O N

SCALE 1/2" = 1'-0"



TYPICAL ELEVATION

SCALE 1/2" = 1'-0"



THIRD FLOOR DUMMY WINDOW ELEVATION

SCALE 3/8" = 1'-0"

ALTERATIONS TO SUNDAY SCHOOL
COURT STREET METHODIST CHURCH
LYNCHBURG, VIRGINIA
STANHOPE S. JOHNSON • ARCHITECT
16 MAY 1966
11 JULY 1966
DRAWING NO. 3