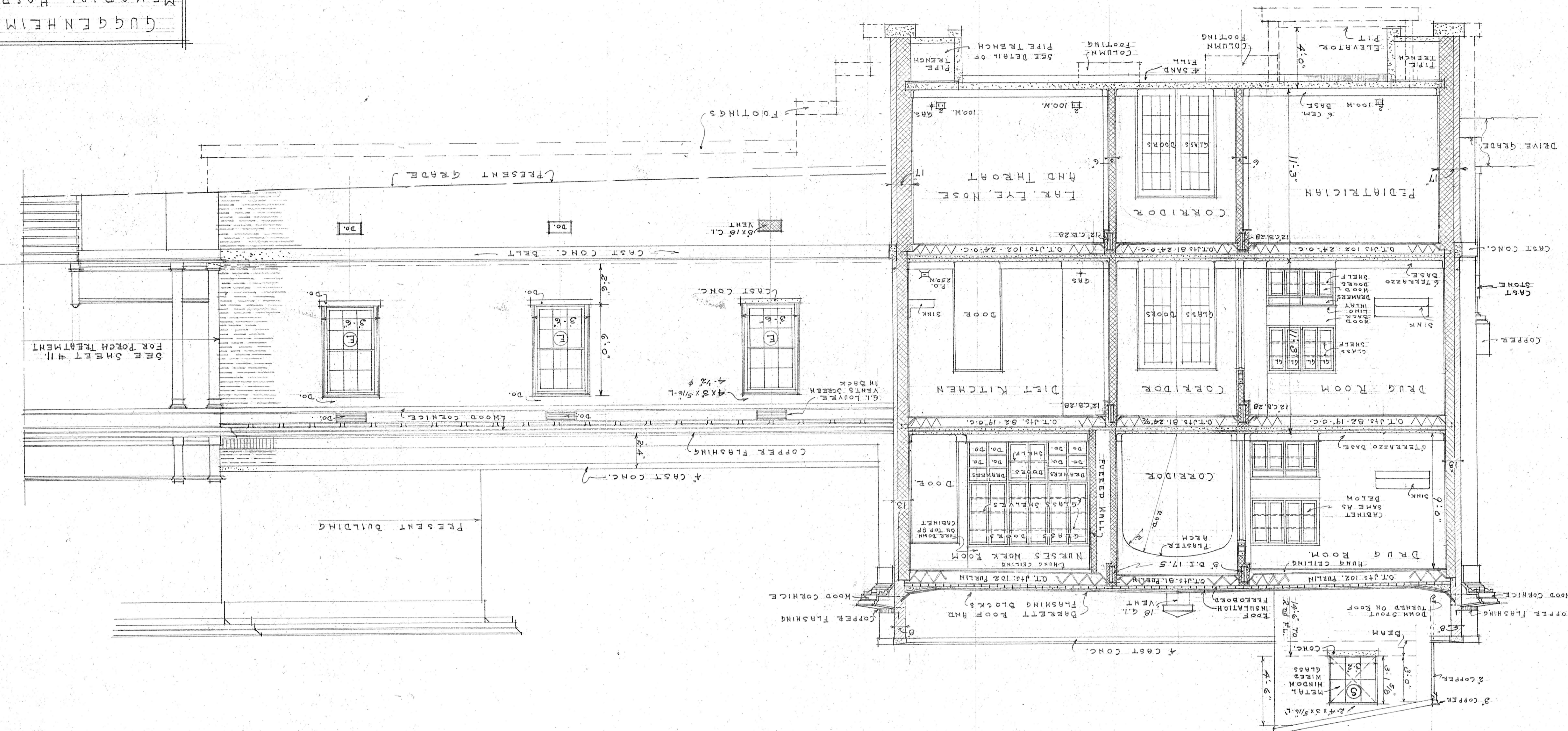


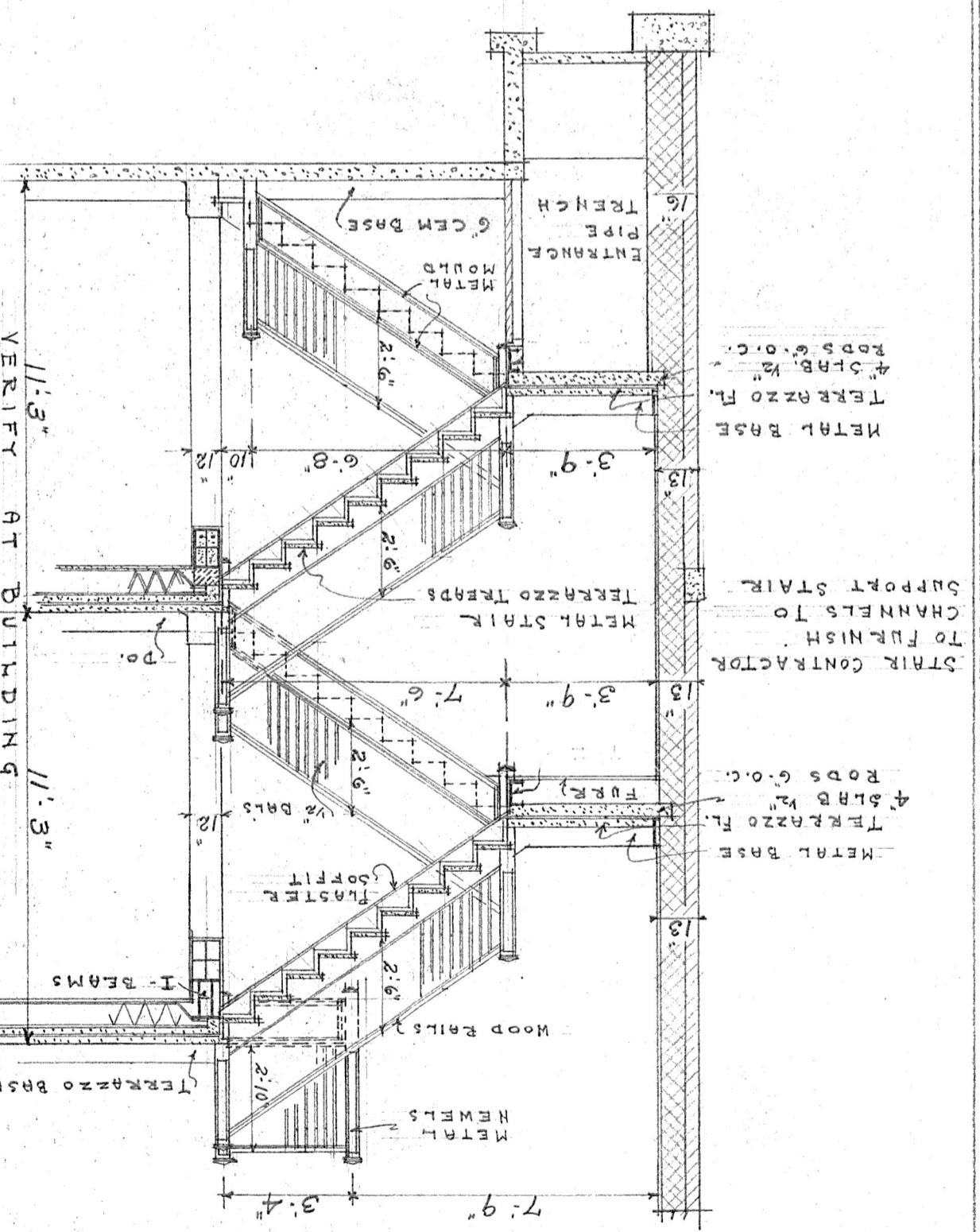
GUGGENHEIMER
MEMORIAL HOSPITAL
GRACE ST.
LYNCHBURG - VIRGINIA
CLARK & CROMBIE
ARCHITECTS
LYNCHBURG - VA
JULY 1930 COMM # 269 SHEET # 10

CROSS SECTION & REAR ELEVATION OF CONNECTING WING

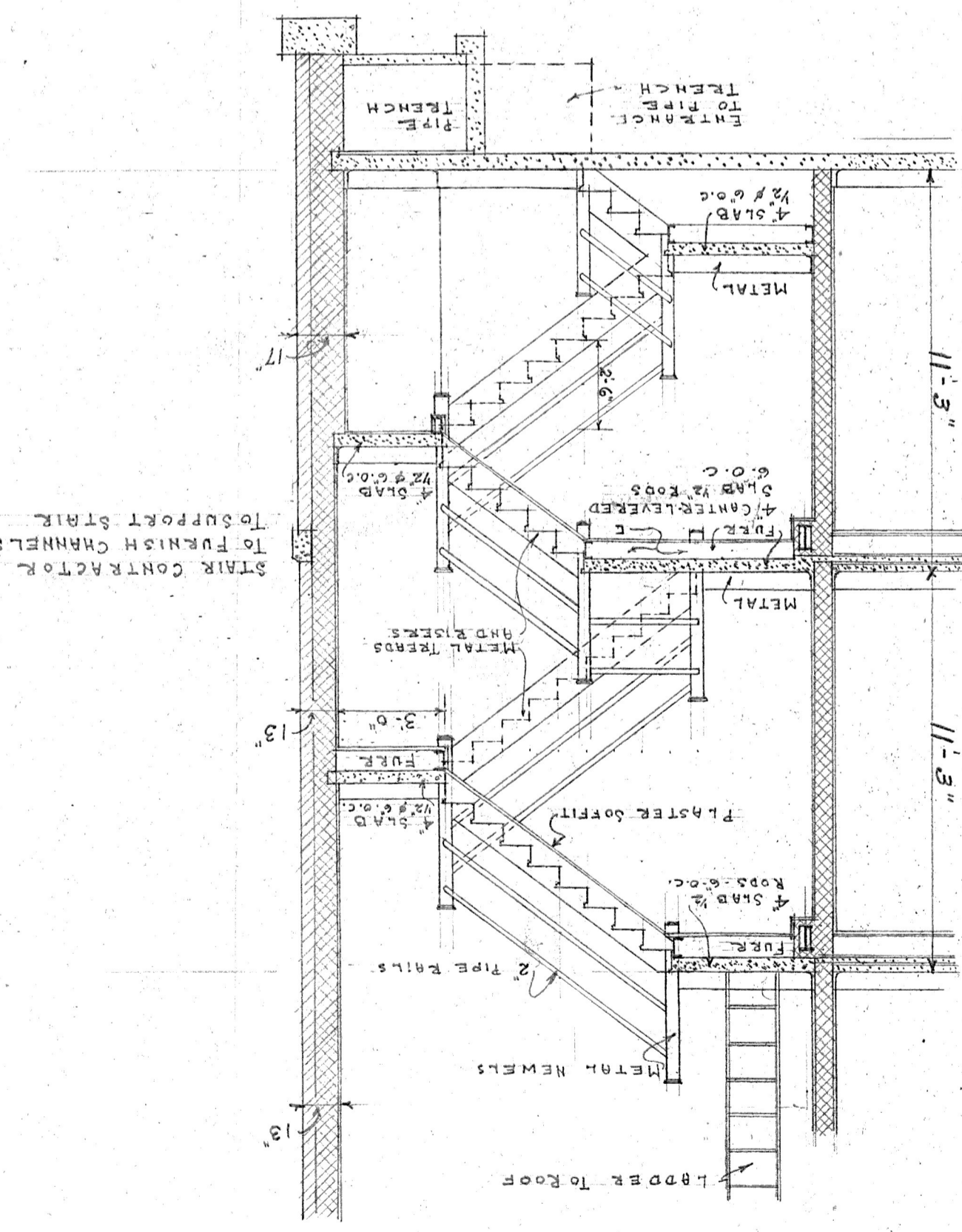
SCALE 1/4" = 1'-0"



SECTION THRU MAIN STAIR



SECTION THRU STAIR TOWER



T.S. TYPICAL SECTION THRU TERRAZZO FLOOR AND BASE

