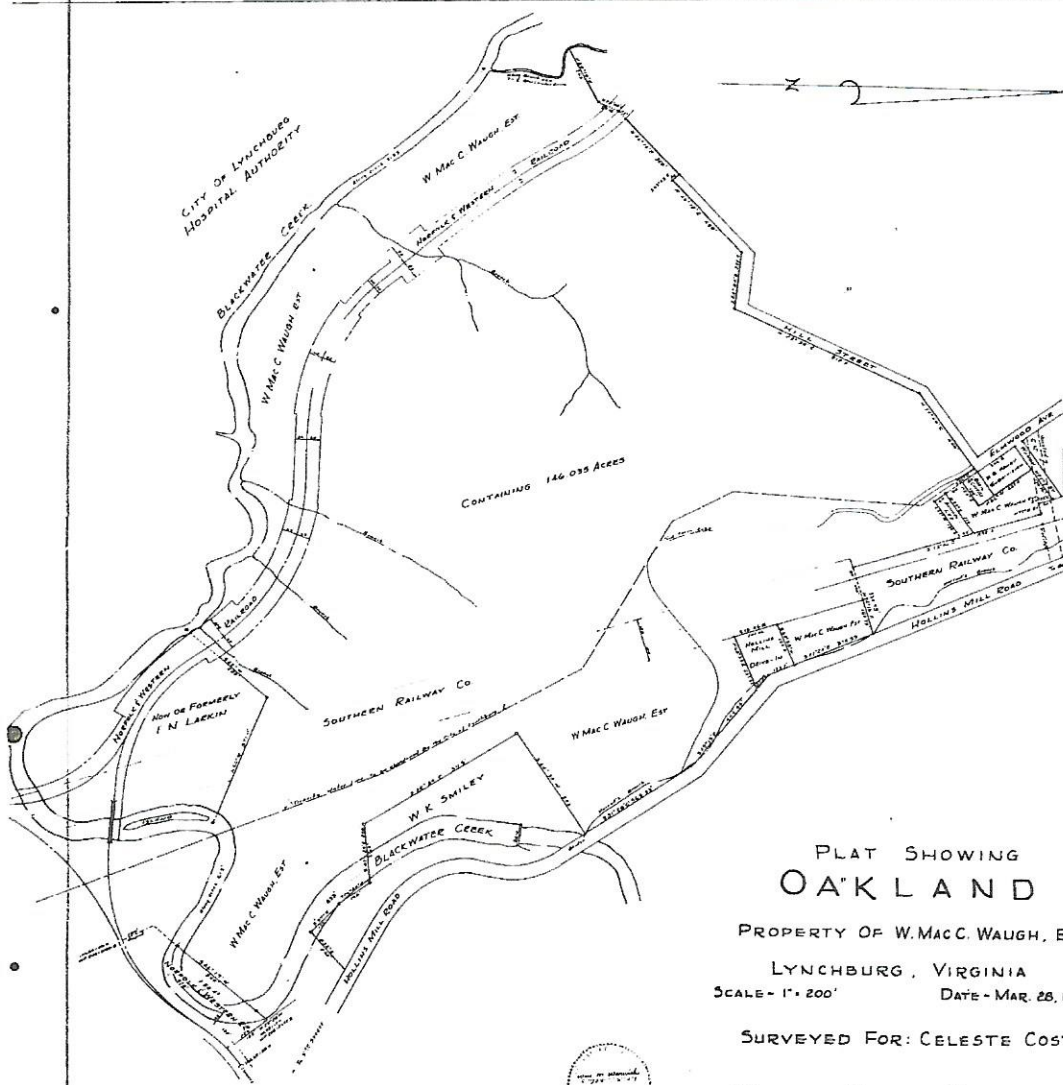


LYNCHBURG
DB 305/178

n- 395 178



PLAT SHOWING OAKLAND

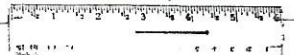
PROPERTY OF W. MACC. WAUGH, E
LYNCHBURG, VIRGINIA
SCALE - 1" = 200' DATE - MAR. 28, 1956

SURVEYED FOR: CELESTE COST

WILLIAM MASSIE WARWICK, S.C.
LYNCHBURG, VA.

\$137.85 Fee
3.00 Taxes
2.00 Adm.
\$142.85 Total

Virginia: In the clerk's office of the Corporation Court for the City of Lynchburg on the 30th day of Apr., 1956. This deed was presented and upon the annexed certificate of acknowledgment admitted to record at 1:30 o'clock P. M., with \$01.00 in U.S. Revenue Stamp thereon.
Notary: *Robert H. Martin* Clerk.



Engineered and
Delivered to

Kiser & Phillips

MAY 5 - 1956