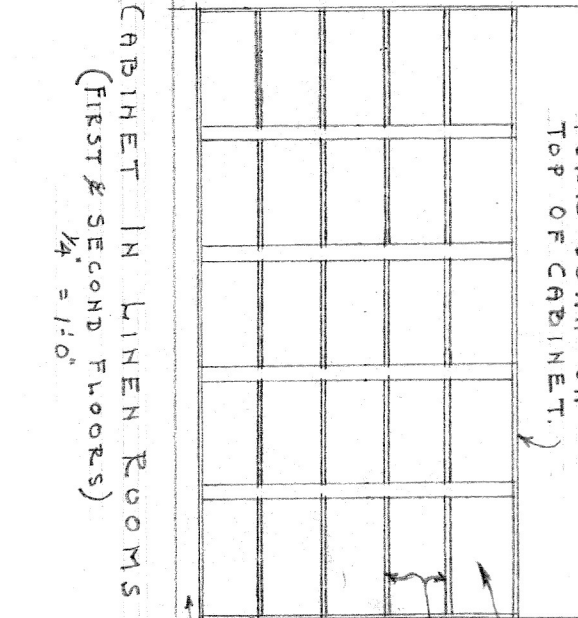
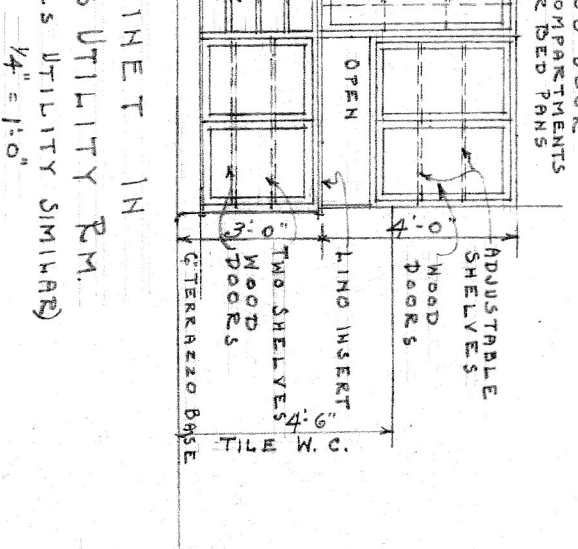


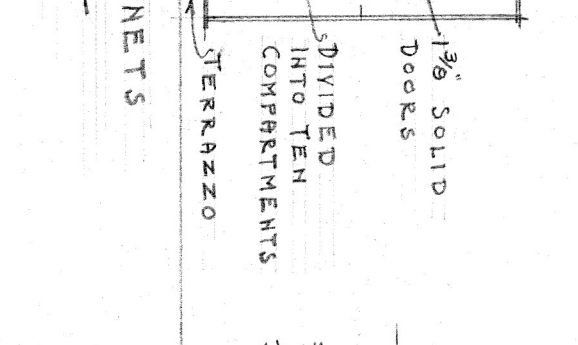
BOOK CASE IN OFFICE FLOOR (GROUND FLOOR) 7'-0" x 1'-0"



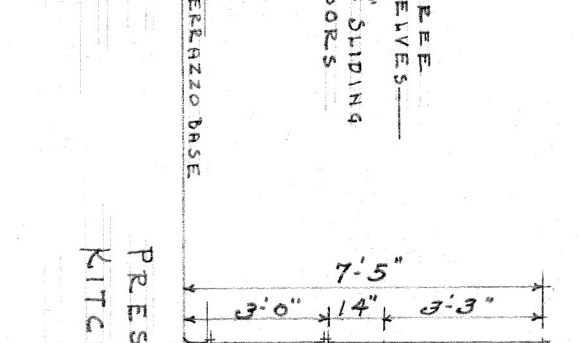
CABINET IN LINEN ROOMS (FIRST & SECOND FLOOR) 7'-0" x 1'-0"



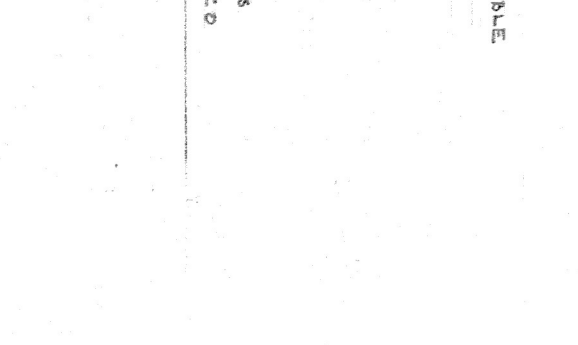
CABINET IN BOYS UTILITY RM. (FIRST UTILITY BUILDING) 7'-0" x 1'-0"



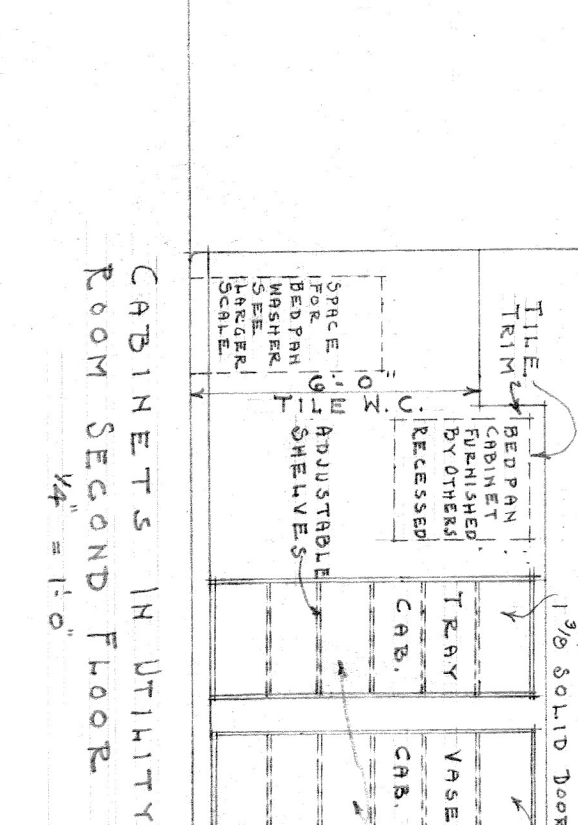
CLOTHS CABINETS IN CORRIDOR 7'-0" x 1'-0"



CABINET IN GIRLS' BATH 7'-0" x 1'-0"

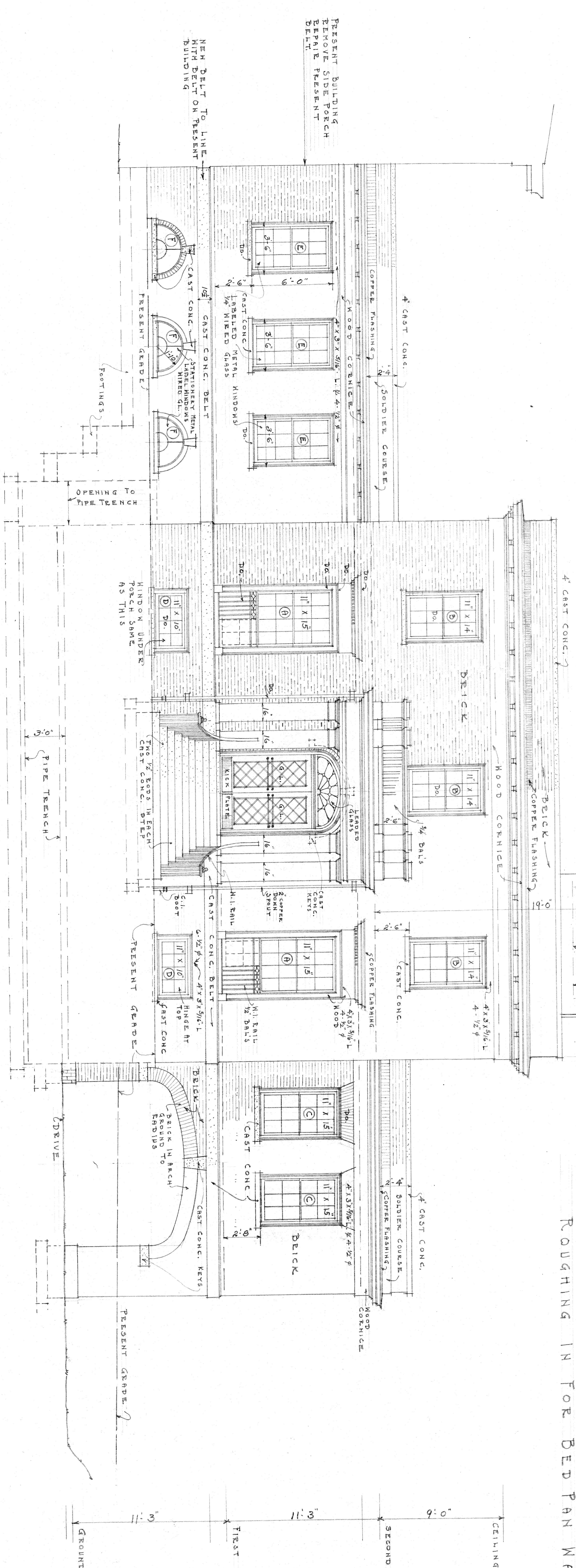


PRESS IN DIET KITCHENS 1st & 2nd FL. 7'-0" x 1'-0"



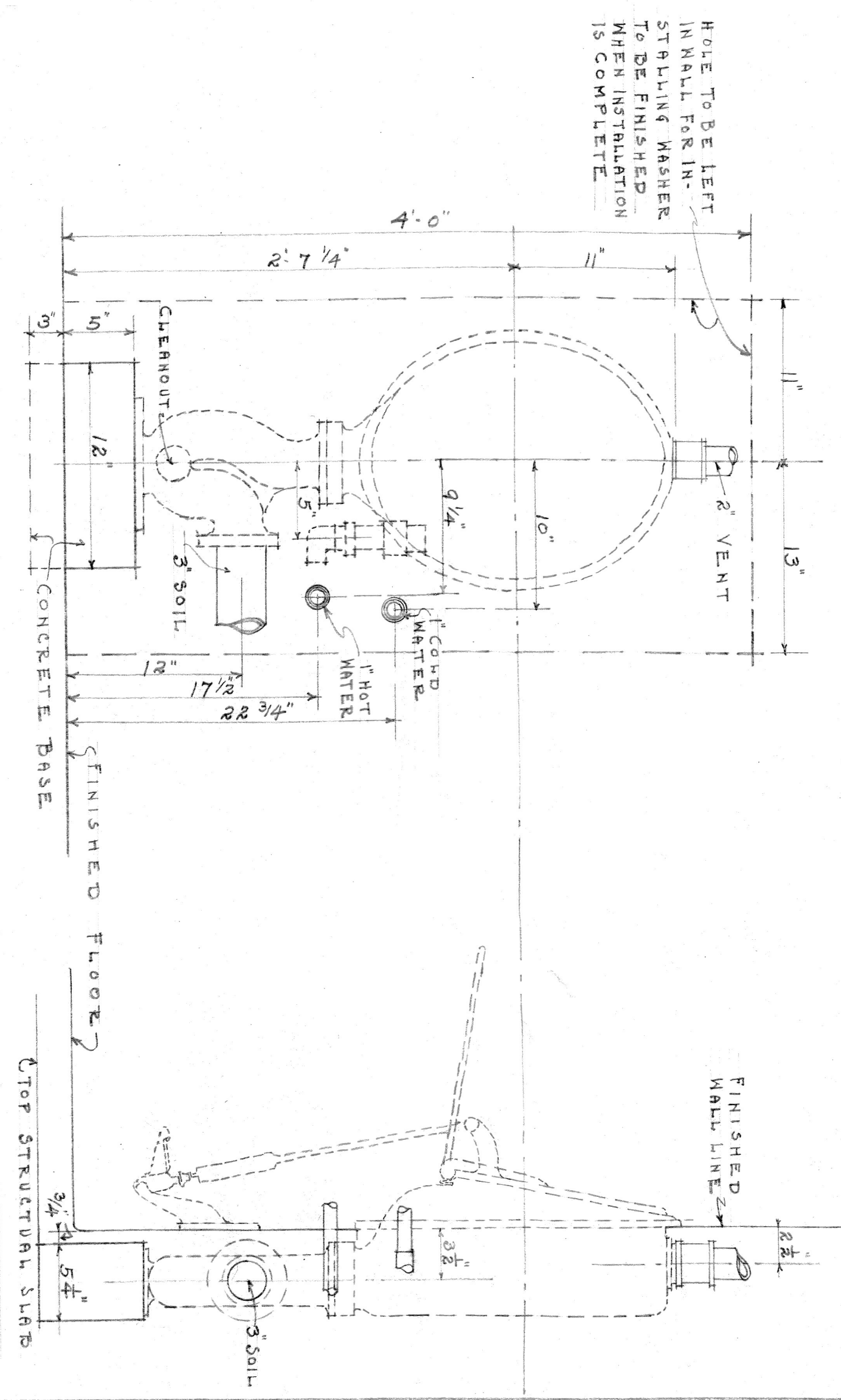
CABINETS IN UTILITY ROOM SECOND FLOOR 7'-0" x 1'-0"

NOTE: SEE CROSS SECTION FOR CABINETS IN NURSES WORK ROOM AND DRUG ROOMS



FRONT OR NORTH ELEVATION

SCALE 1/4" = 1'-0"



ROUGHING IN FOR BED PAN WASHERS

GUGGENHEIMER
MEMORIAL HOSPITAL
GRACE ST
LYNCHBURG, VIRGINIA
CLARK & CROWE
ARCHITECTS
LYNCHBURG, VA
JULY 1930/DM# 2691 SHEET 6