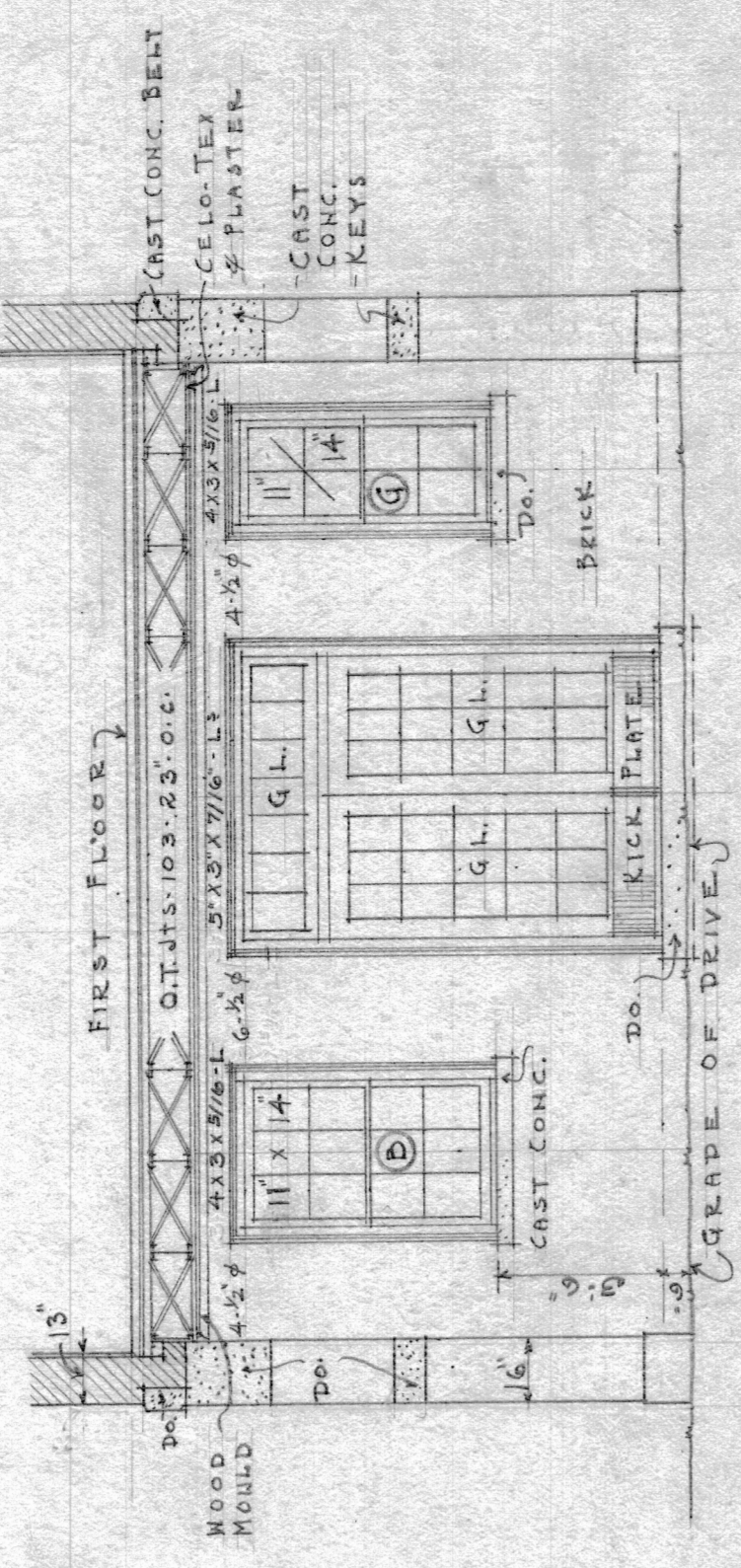
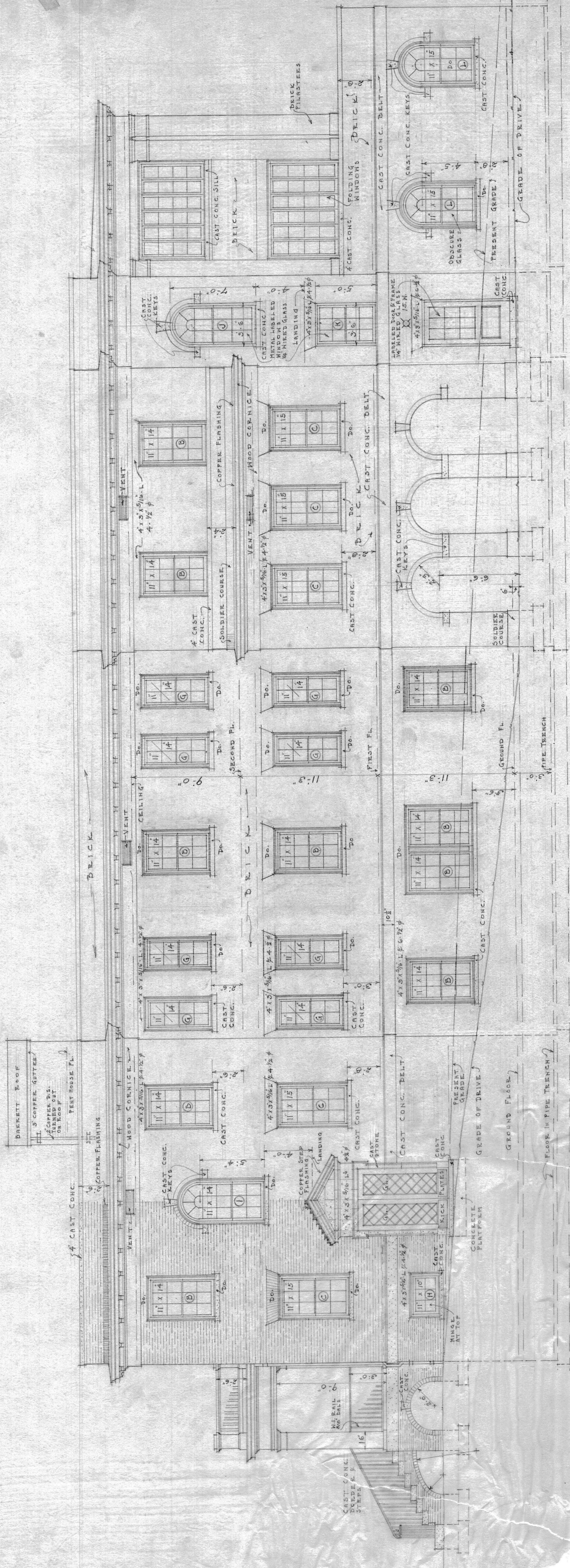


J A M B

ELEVATION AT BASE
F.S. TYPICAL INTERIOR METAL DOOR FRAME



ELEVATION IN PORTE COCHERE
SCALE 1/4" = 1'-0"



SEE ELEVATION
INSIDE PORTE COCHERE.

RIGHT SIDE OR WEST ELEVATION
SCALE 1/4" = 1'-0"

GUGGENHEIMER
MEMORIAL HOSPITAL
GRACE ST
LYNCHBURG, VIRGINIA
CLARK & CROWE
ARCHITECTS
LYNCHBURG, VIRGINIA
JULY 1930 COMM#268 (SHE)