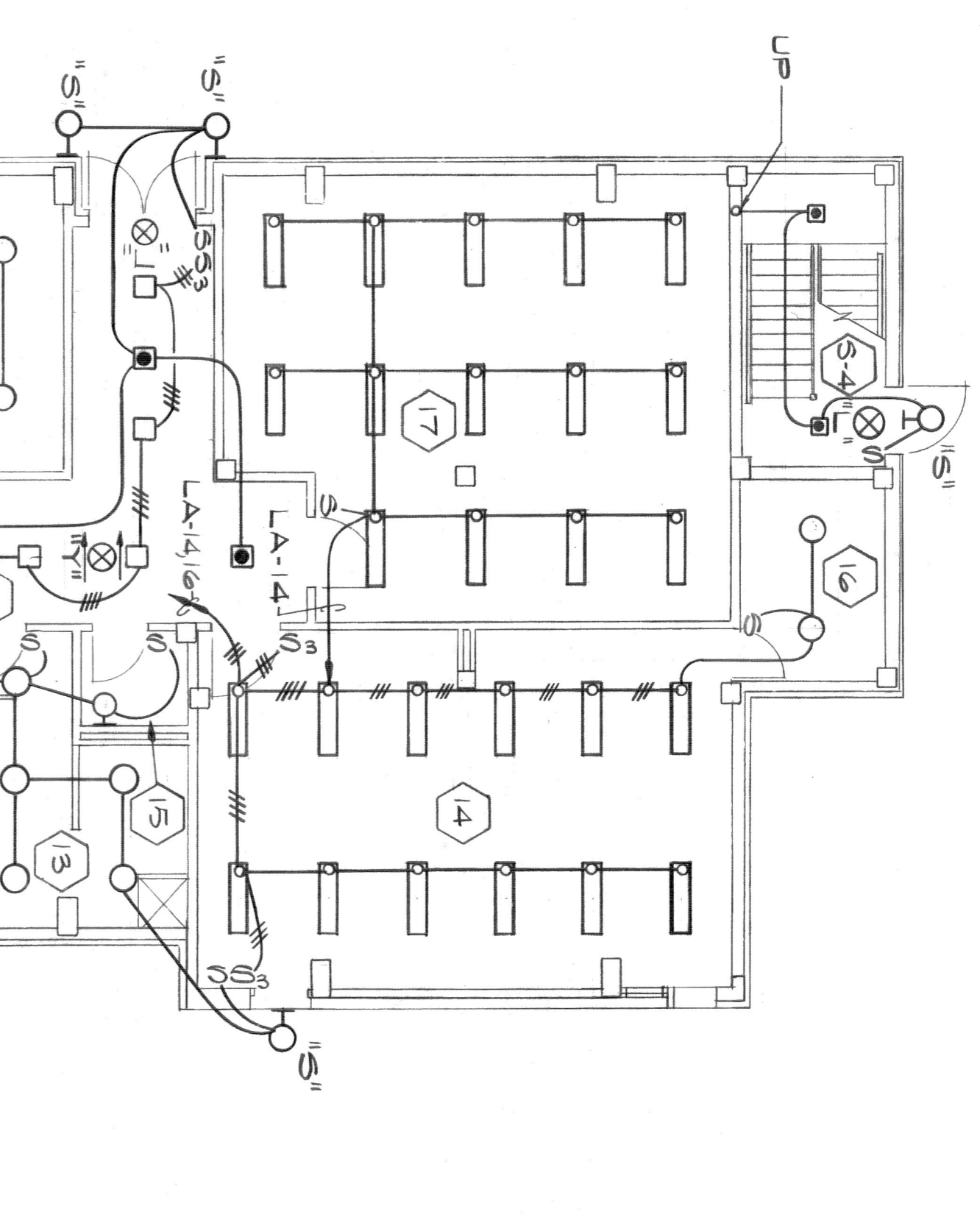
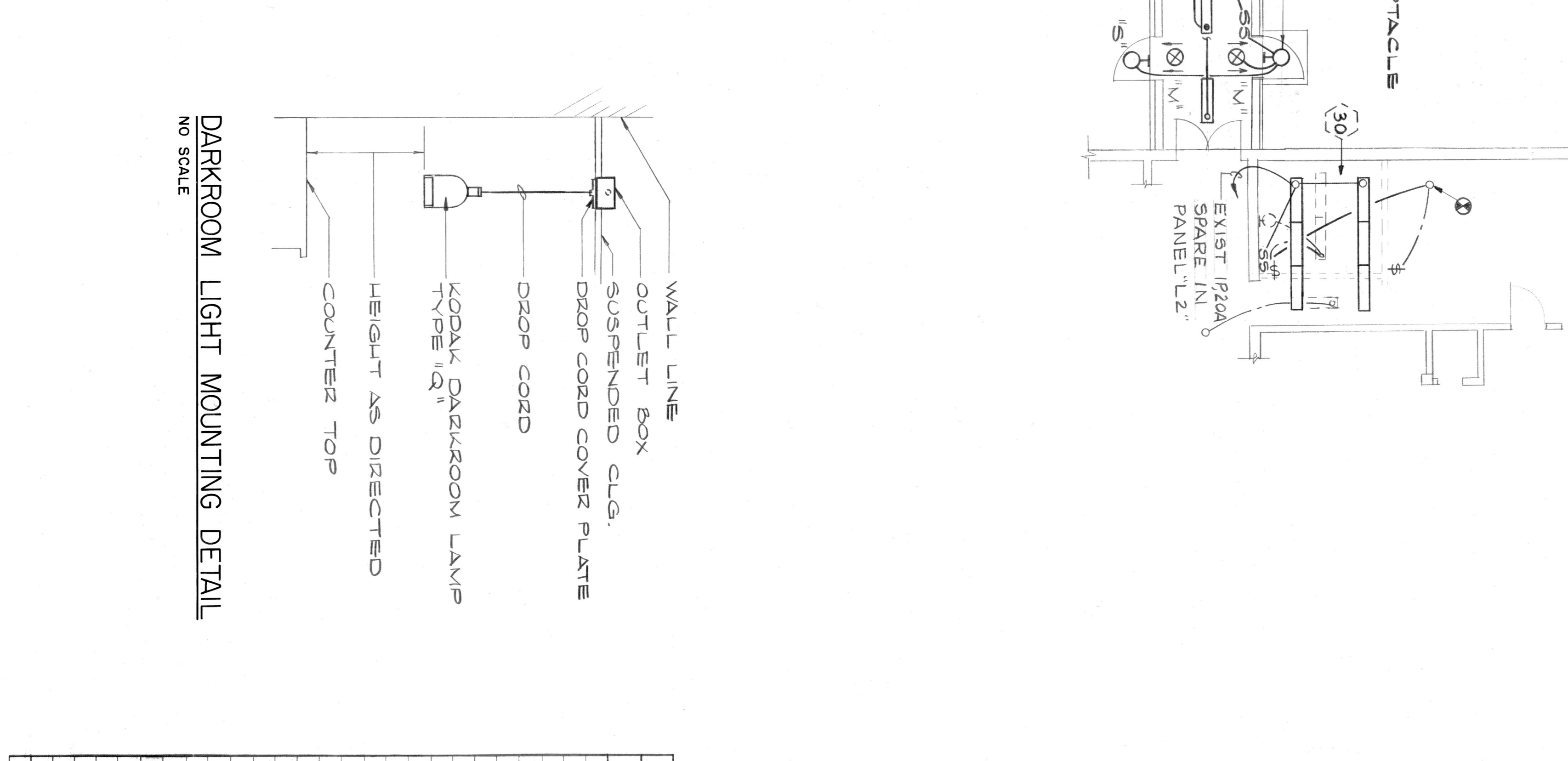
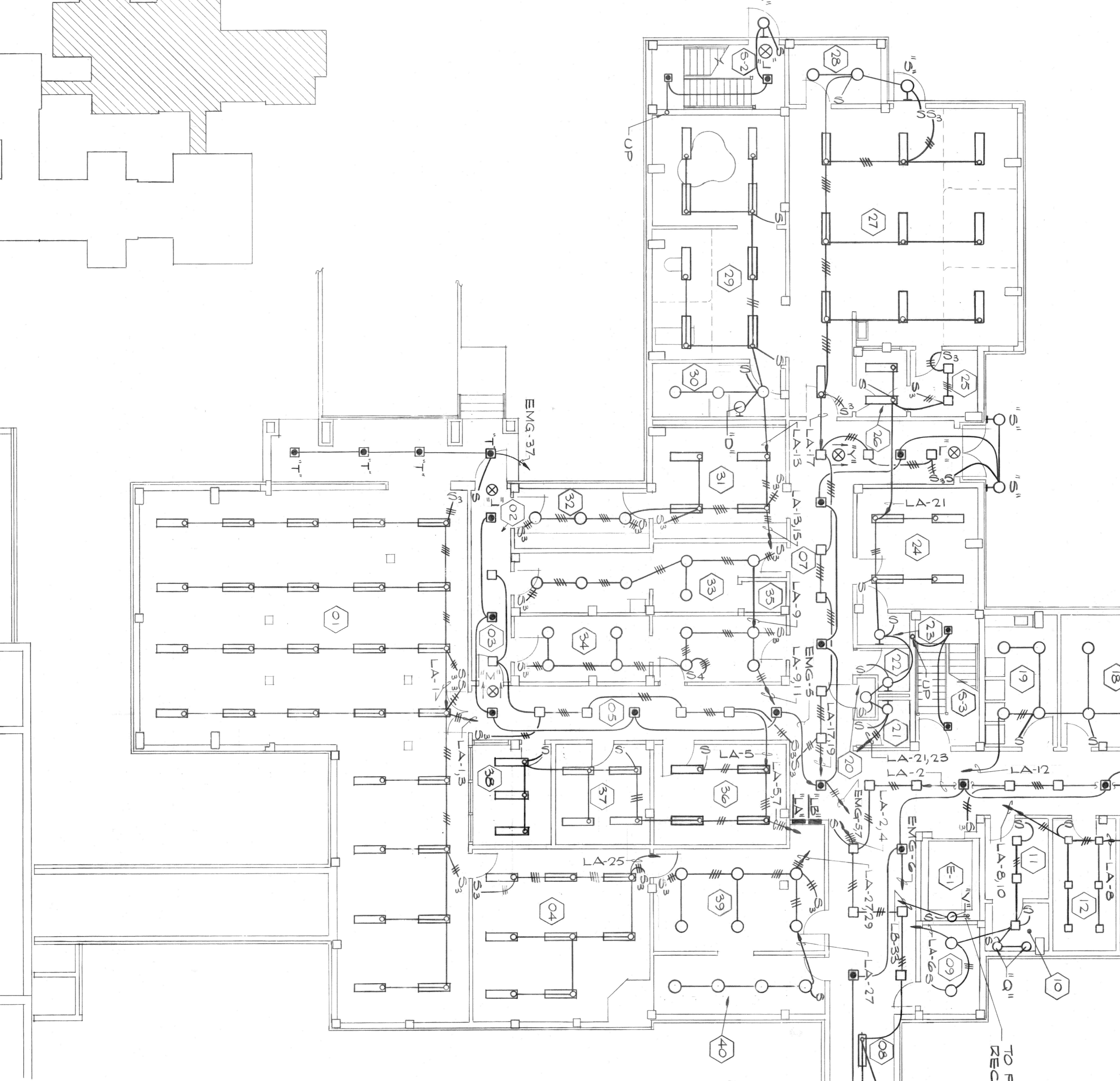


ROOM NO.	TYPE	NO./SIZE LAMP	ROOM NO.	TYPE	NO./SIZE LAMP
01	B	2/40WRS	24	AA	3/40WRS
02	E	1/50WIF	25	E	1/200WIF
03	E	1/50WIF	26	AA	3/40WRS
04	E	2/40WRS	27	VV	2/40WRS
05,06,07	F	1/200WIF	28	J	2/100WIF
08	R	2/40WRS	29	H	2/40WRS
09	N	1/200WIF	30	O	1/50WIF
10	E	1/50WIF	31	H	2/40WRS
11	E	1/50WIF	32	J	2/100WIF
12	G	1/50WIF	33	J	2/100WIF
13	O	1/50WIF	34	J	2/100WIF
14	A	2/40WRS	35	-	-
15	D	2/75WIF	36	H	2/40WRS
16	J	2/100WIF	37	H	2/100WIF
17	A	2/40WRS	38	H	2/40WRS
18	J	2/100WIF	39	H	2/100WIF
19	J	2/100WIF	40	J	2/100WIF
20	P	1/100WIF			
21 & 22	D	2/75WIF	52,53,54	F	1/200WIF
23			EXIST 30	X	2/40WRS



- GENERAL NOTES**
- COORDINATE LOCATION & INSTALLATION OF ALL LIGHTING FIXTURES W/ OTHER TRADES PRIOR TO SETTING OF OUTLETS, CLG. SYSTEMS, ETC.
  - VERIFY IN FIELD LOCATIONS OF EXISTING CONDUITS TO HEATING PLANT, POWER POLE, & NEW ADDITION TO HOSPITAL.
  - CONVENIENCE OUTLETS SHALL BE MOUNTED 18" UP EXCEPT OUTLETS ADJACENT TO TV ANTENNA SYSTEM OUTLETS SHALL BE AT SAME HEIGHT AS TV OUTLETS.
  - ALL OUTLETS SERVED BY PANEL 'EMG' SHALL HAVE RED COVER PLATES TO INDICATE EMERGENCY POWER OUTLETS.
  - ALL FAN COIL UNIT CONNECTIONS TO HAVE 1P200A, 125V ELEC BASEBOARD CONNECTIONS TO HAVE 1P200A, 125V TWISTLOCK DISC RECEPTACLE.
  - CUT & PATCH PARKING PAVEMENT AS REQD FOR NEW WIRING.

- LEGEND**
- FLUORESCENT LIGHTING FIXTURE.
  - INCANDESCENT LIGHTING FIXTURE.
  - ⊗ EXIT LIGHTING FIXTURE - 1 DENOTES DIRECTION TO EXIT.
  - ⊕ DUPLEX CONVENIENCE RECEPTACLE 3-WIDE GROUNDING TYPE - 20A, 125V. SEE NOTE C.
  - ▲ TELEPHONE OUTLET - 4 1/2" SQ. OUTLET BOX W/ COVER HAVING 1" BUSHED HOLE - 18" UP.
  - ⊖ TOGGLE SWITCH - 1P, 20A, 125V - 4"-6" UP.
  - ⊙ TOGGLE SWITCH - 3-WAY, 20A, 125V - 4"-6" UP.
  - ⊚ TOGGLE SWITCH - 4-WAY, 20AMP, 125V - 4"-6" UP.
  - ⊛ TOGGLE SWITCH TO BE REMOVED.
  - ⊜ DISCONNECT SWITCH - AMP & POLE AS NOTED.
  - ⊝ CLOCK HANGER OUTLET - 5W, GRD. TYPE, (5A), 125V WT ALARM INDICATING LIGHT.
  - ⊞ ALARM BUZZER FOR MEDICINE ROOM.
  - ⊟ EXIST. CONDUIT & WIRING TO BE REMOVED.
  - ⊠ MOTOR CONNECTION W/ FLEXIBLE CONDUIT & WIRING TO EQUIPMENT W/ FLEXIBLE CONDUIT & WIRING TO EQUIPMENT - SEE SCHEDULE.
  - ⊡ LIGHTING PANELBOARD - SEE SCHEDULE.
  - ⊢ POWER PANELBOARD - SEE SCHEDULE.
  - ⊣ CONDUIT CONCEALED IN WALLS OR ABOVE CEILING.
  - ⊤ CONDUIT CONCEALED IN FLOOR SLAB OR UNDER SLAB.
  - ⊥ BRANCH CIRCUIT HANGER - PANEL "LA", CIRCUIT NO. 11.
  - ⊦ TELEPHONE TERMINAL CABINET.
  - ⊧ EMERGENCY POWER PANEL.
  - ⊨ DUPLEX RECEPTACLE - 5W, 20A, 125V, HUBBELL #53,67 - SEE EMERG. RECEPT. & ALARM RISER DIAGRAM.
  - ⊩ SAVE AS (O) ABOVE EXCEPT CONNECTED TO EMERGENCY PANEL.
  - ⊪ SAME AS (O) ABOVE EXCEPT CONNECTED TO EMERGENCY PANEL.
  - ⊫ 30A, 5W, 240V, 1Ø, DRYER RECEPT. - 18" UP LIGHTING FIXTURE TO BE REMOVED.
  - ⊬ CAST IRON FLOOR BOX W/ SINGLE RECEPT. 3W, GRD. TYPE, 20A, 125V WATER TIGHT W/ BASS COVER FL. GENERAL FIRE ALARM CHIME - 12" BELOW CLG. TWISTLOCK DISCONNECT RECEPT. 1P, 20A, 125V. HOSPITAL STAFF STATION BACKBOX - 10 5/8" W x 5 1/4" H x 5 1/2" D - WT. 4.6" UP.
  - ⊭ DUTY STATION BACKBOX - 12 3/8" W x 6 1/4" H x 3 1/2" D.
  - ⊮ BACKBOX FOR TOLLER CALL STATION - 4 1/2" SQ. W/ 2 1/8" GANG ADAPTER FOR TOTAL DEPTH W/ 2 1/8" HEIGHT AS DIRECTED.
  - ⊯ J.B. FOR FUTURE SPEAKER BY OTHERS.
  - ⊰ PULL BOX - SEE CALL SYSTEM EMPTY CONDUIT RISER DIAGRAM, DWG. NO. E-7.
  - ⊱ SMOKE DETECTOR SW. - SEE RISER DIAGRAM DWG. E-4.
  - ⊲ 4" SQ. JUNG. BOX W/ GANG COVER FOR FUTURE VOLUME CONTROL - MT. 4'-6" UP.
  - ⊳ BACKBOX FOR CORRIDOR DOVE LIGHT - 4 1/2" SQ. W/ 2 GANG ADAPTER FOR TOTAL DEPTH OF 2 1/8", LIGHT BY OTHERS.
  - ⊴ RINGBOX FOR TV ANTENNA SYS. TAP-OFF. JUNCTION BOX W/ FLEXIBLE CONDUIT & WIRING TO EQUIPMENT AS REQD.
  - ⊵ CONNECT NEW TO EXISTING WEATHERPROOF TV CABINET - SEE NOTES DWG. NO. E-7.
  - ⊶ WP MAGNETIC DOOR RELEASE.



**FIXTURE SCHEDULE**

TYPE	MANUFACTURER	CATALOG NO.	NO. & SIZE LAMPS	MOUNTING	REMARKS
A	SMITHCRAFT	ISP-1-40	2/40WRS	RECESSED	
B	SMITHCRAFT	ISP-2-40	2/40WRS	PENDANT	MOUNT 8'-0" UP
C	SMITHCRAFT	FES-2-40	2/40WRS	SURFACE WALL	MOUNT 6'-0" UP
D	PERFECLITE	107172	1/75WIF	SURFACE WALL	
E	PERFECLITE	F-21-6	1/150WIF	RECESSED	
F	PERFECLITE	F-21-6	1/300WIF	RECESSED	
G	PERFECLITE	F-23-6	2/40WRS	SURFACE CLG	
H	PERFECLITE	10631	2/40WRS	SURFACE CLG	
I	PERFECLITE	10634	2/100WIF	SURFACE CLG	
J	PERFECLITE	PS-361E	4/CT	GRACKET WALL	
K	PERFECLITE	PS-361E	4/CT	GRACKET WALL	
L	PERFECLITE	PS-361DA	4/CT	GRACKET WALL	
M	PERFECLITE	PS-361DA	4/CT	GRACKET WALL	
N	PERFECLITE	RF-200	1/50WIF	PENDANT	MOUNT 8'-0" UP
O	PERFECLITE	FLS-74	1/100WIF	RECESSED	
P	PERFECLITE	965-Y	1/100WIF	SURFACE CLG	
Q	KODAK	9545-240	2/40WRS	SURFACE CLG	
R	SMITHCRAFT	5270 VT	1/200WIF	SURFACE WALL	
S	MARCO	5270 VT	1/200WIF	SURFACE WALL	
T	PERFECLITE	F-401-6	2/50WIF	RECESSED	
U	PERFECLITE	60475	4/20WRS	RECESSED	
V	NEPHILIBEN	95-24A	2/75WIF	RECESSED	
W	LAM	MB-243X 4/4	2/40WRS	SURFACE CLG	
X	SMITHCRAFT	95X-2-40	2/40WRS	SURFACE CLG	
Y	PERFECLITE	PS-371DA	4/CT	GRACKET CLG	
Z	PERFECLITE	F-395-FW	1/100WIF	RECESSED	

**GROUND FLOOR PLAN - LIGHTING**

SCALE: 1/8" = 1'-0"

**ALTERATIONS & ADDITIONS TO GUGGENHEIMER MEMORIAL HOSPITAL**  
LYNCHBURG, VIRGINIA

**CLARK, NEXSEN & OWEN - ARCHITECTS**  
LYNCHBURG, VIRGINIA

DATE: JAN 1968  
BY: JCH