

NOTES ON STRUCTURAL STEEL

OVER OPENINGS IN THE WALLS FROM THE LINTELS FILLED WITH CONCRETE REINFORCED AS CALLED FOR ON DRAWINGS.

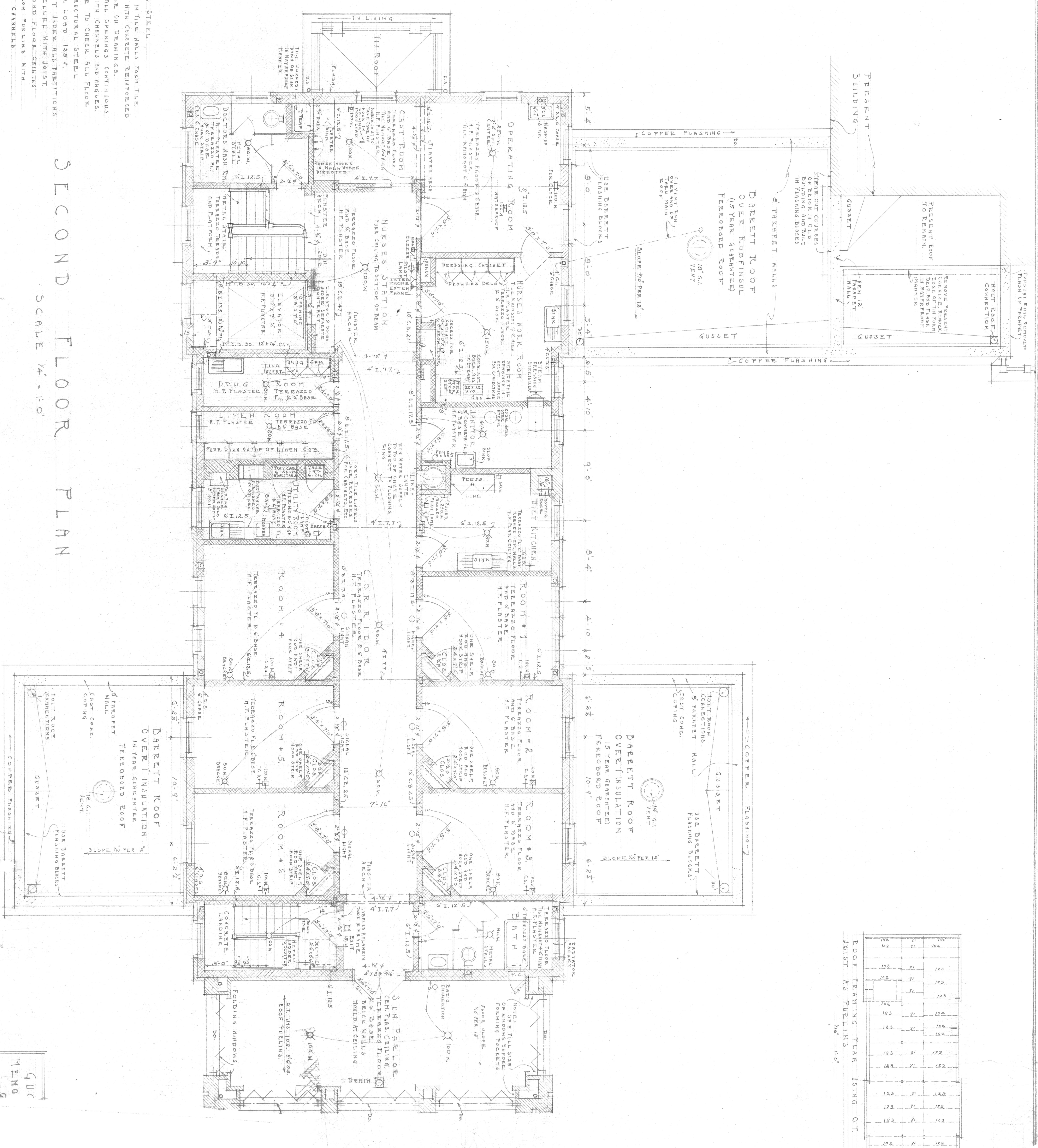
FORM AROUND ALL OPENINGS CONTIGUOUS TO FLOORS WITH CHANNELS AND ANGLES. MANUFACTURED TO CHECK ALL FLOOR JOIST AND STRUCTURAL STEEL.

TOTAL FLOOR LOAD 125#.

DOUBLE JOIST UNDER ALL PARTITIONS RUNNING PARALLEL WITH JOIST ENTIRE SECOND FLOOR CEILING TO BE HUNG FROM PURLINS WITH COLD ROLLED CHANNELS

# SECOND FLOOR PLAN

SCALE  $\frac{1}{4}" = 1'-0"$



GUC  
MEMO  
LYNCH

ROOF FRAMING PLAN USING OT JOIST AS PURLINS  
 $\frac{1}{4}" = 1'-0"$

102	101	100	99	98	97	96	95	94	93	92	91	90	89	88	87	86	85	84	83	82	81	80	79	78	77	76	75	74	73	72	71	70	69	68	67	66	65	64	63	62	61	60	59	58	57	56	55	54	53	52	51	50	49	48	47	46	45	44	43	42	41	40	39	38	37	36	35	34	33	32	31	30	29	28	27	26	25	24	23	22	21	20	19	18	17	16	15	14	13	12	11	10	9	8	7	6	5	4	3	2	1	0
-----	-----	-----	----	----	----	----	----	----	----	----	----	----	----	----	----	----	----	----	----	----	----	----	----	----	----	----	----	----	----	----	----	----	----	----	----	----	----	----	----	----	----	----	----	----	----	----	----	----	----	----	----	----	----	----	----	----	----	----	----	----	----	----	----	----	----	----	----	----	----	----	----	----	----	----	----	----	----	----	----	----	----	----	----	----	----	----	----	----	----	----	----	----	---	---	---	---	---	---	---	---	---	---