

PROJECT NO. VA-208

# ALTERATIONS & ADDITIONS TO

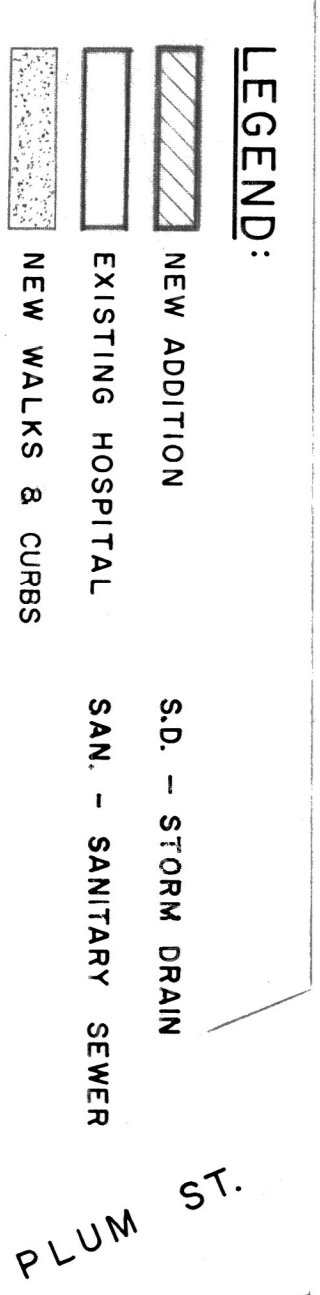
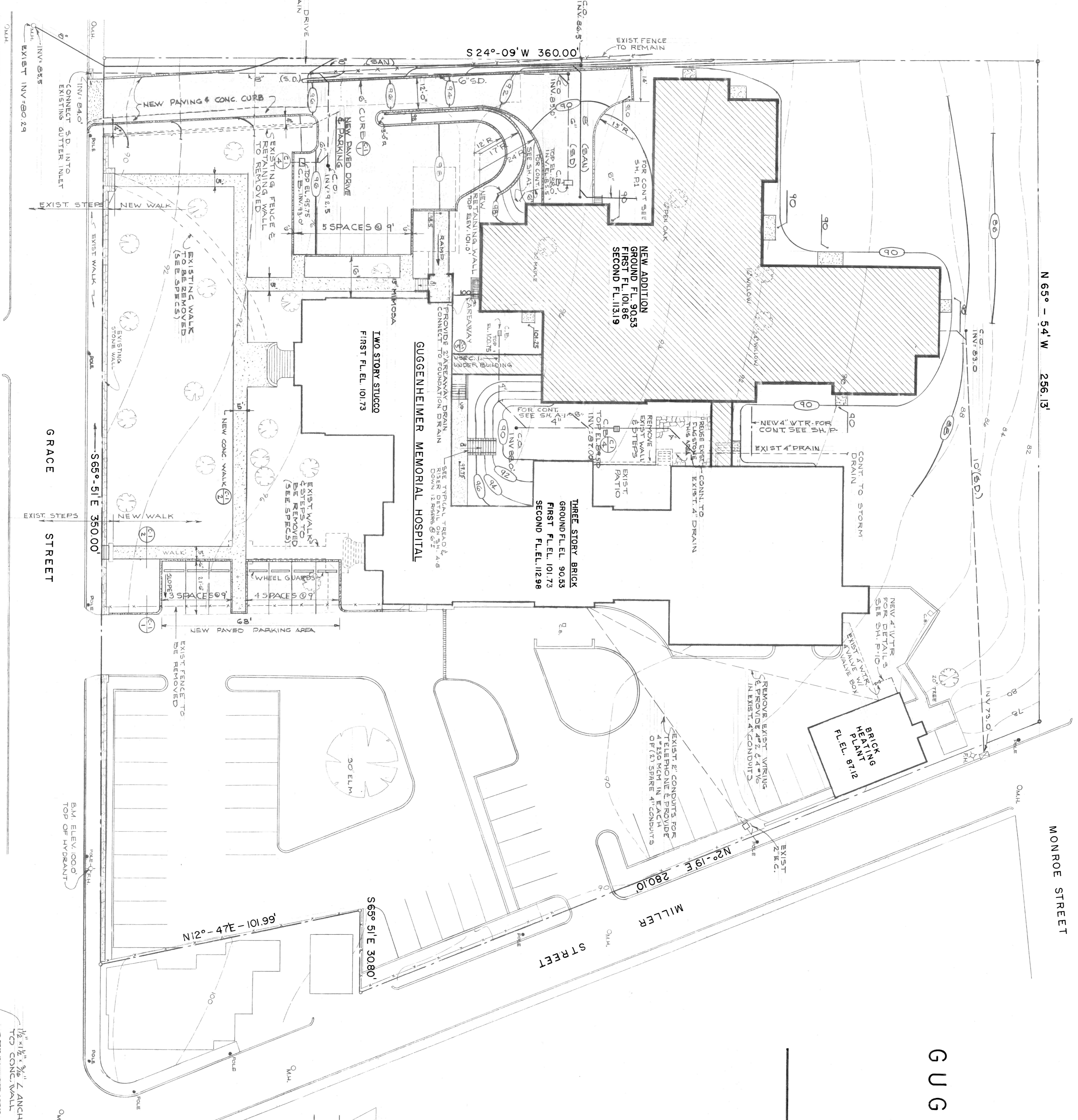
# GUGGENHEIMER MEMORIAL HOSPITAL

LYNCHBURG, VIRGINIA

CLARK, NEXSEN & OWEN  
ARCHITECTS & ENGINEERS  
LYNCHBURG, VA. NORFOLK, VA.

THE OFFICE OF JAMES R. EDMUNDS JR. ARCHITECT  
CONSULTANT  
BALTIMORE, MARYLAND

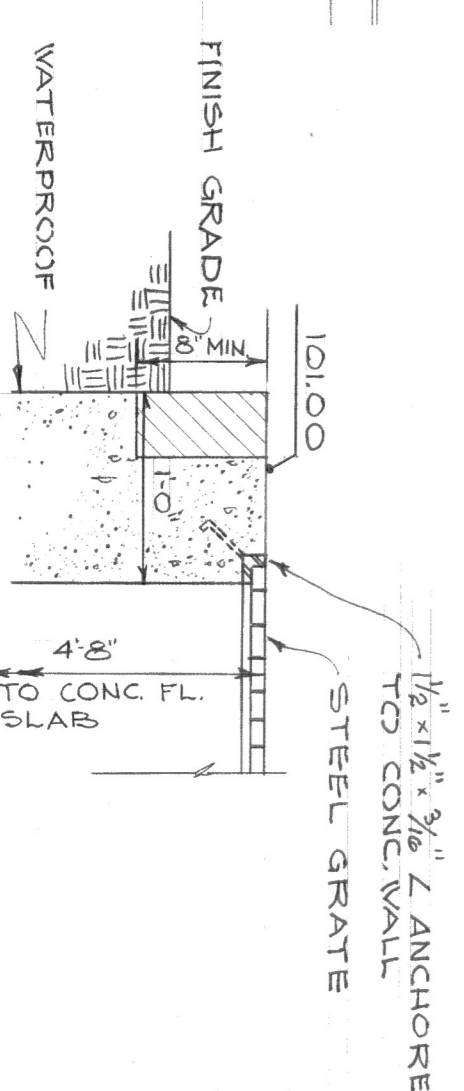
FRAIOLI-BLUM-YESSelman  
STRUCTURAL ENGINEERS  
NORFOLK, VIRGINIA



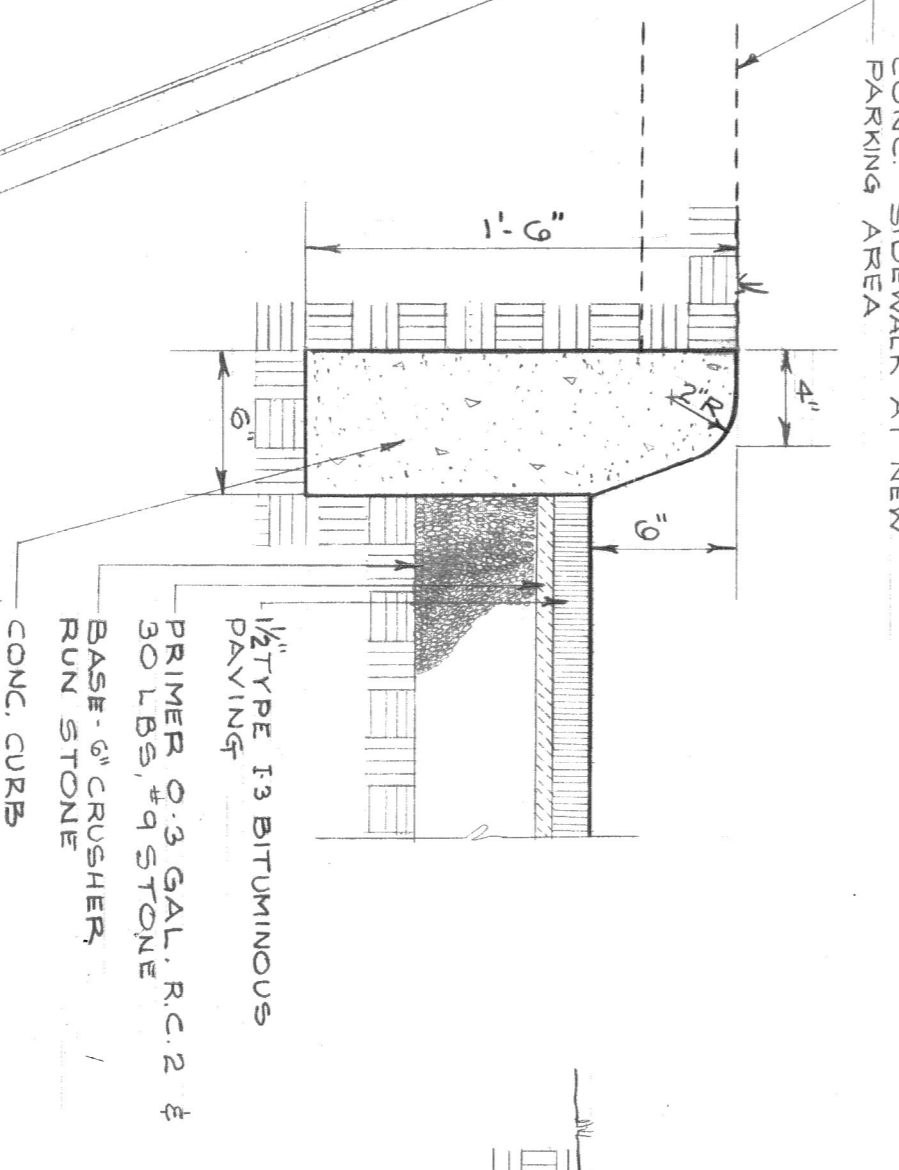
SITE PLAN  
1" = 20'-0"

NOTE: SURVEY INFORMATION SHOWN ON THIS SITE PLAN WAS TAKEN FROM PLAT MADE FOR GUGGENHEIMER MEMORIAL HOSPITAL, BY ADRIAN OVESTRETT, S.C.S., DATED MARCH 8, 1963 AND REVISED ON AUGUST 8, 1965.

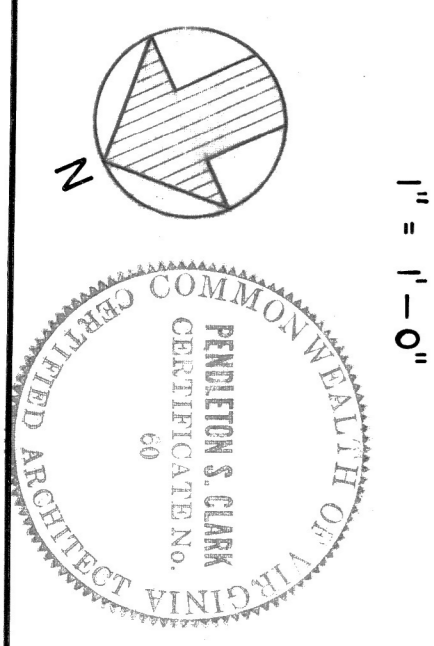
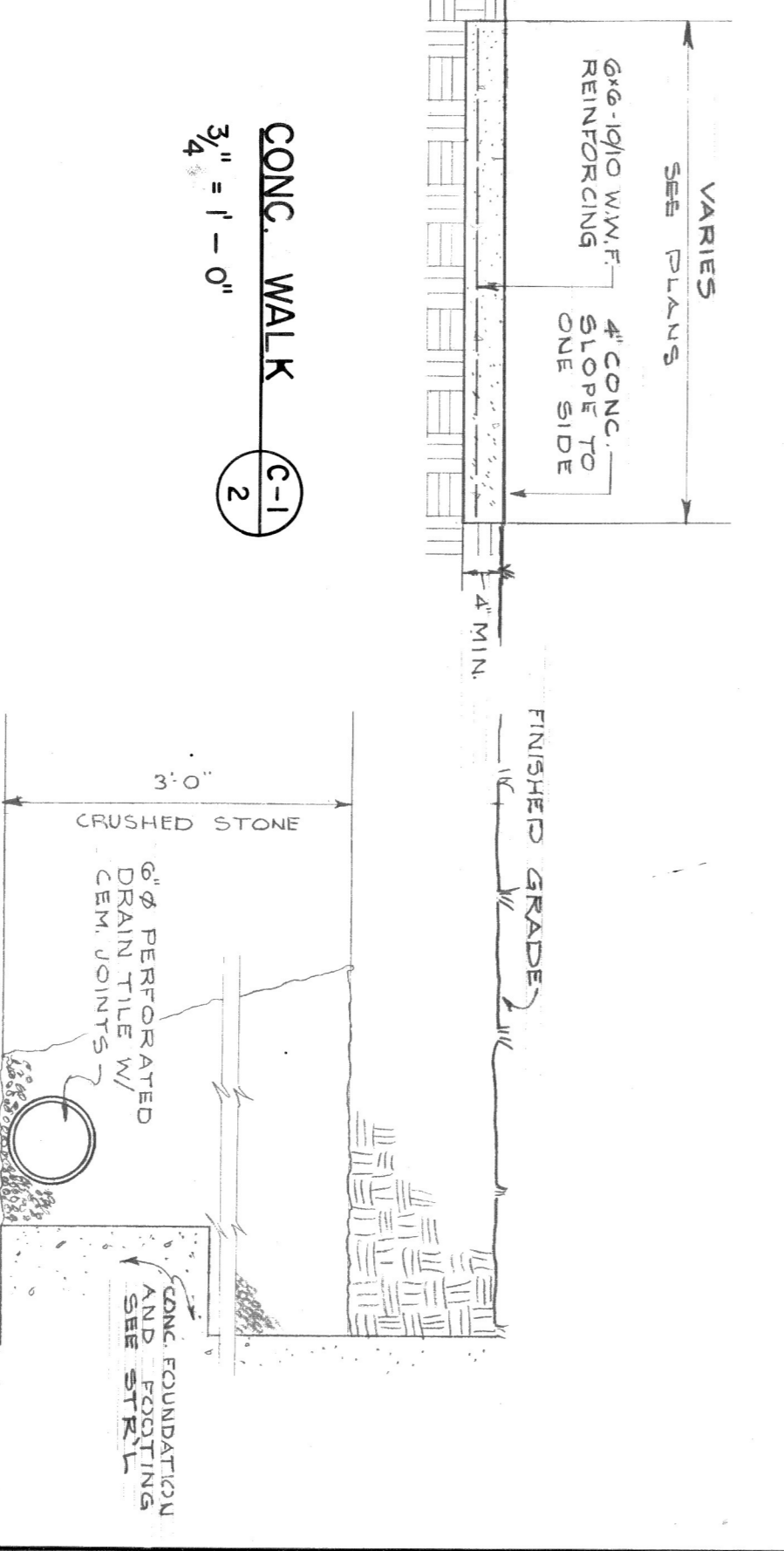
AREAWAY GRATE DETAIL  
1" = 1'-0"



CURB & PAVING DETAIL  
1 1/2" = 1'-0"



FOUNDATION DRAIN TILE  
NOT TO SCALE



APPROVED FOR GUGGENHEIMER MEMORIAL HOSPITAL  
ALTERATIONS & ADDITIONS  
TO  
GUGGENHEIMER MEMORIAL  
HOSPITAL  
LYNCHBURG, VIRGINIA

PROJECT NO. VA-208	
ALTERATIONS & ADDITIONS TO GUGGENHEIMER MEMORIAL HOSPITAL LYNCHBURG, VIRGINIA	
DATE	SCALE
DESIGNED BY	DRAWN BY
CHECKED	S.P.J.
DATE	SCALE
DESIGNED BY	DRAWN BY
CHECKED	S.P.J.
DATE	SCALE
DESIGNED BY	DRAWN BY
CHECKED	S.P.J.