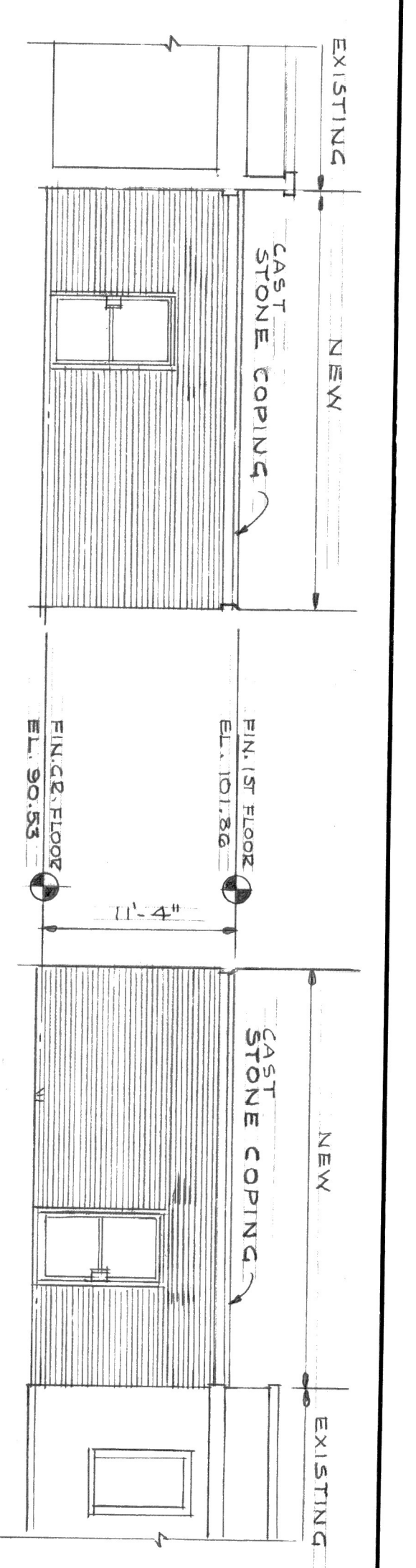
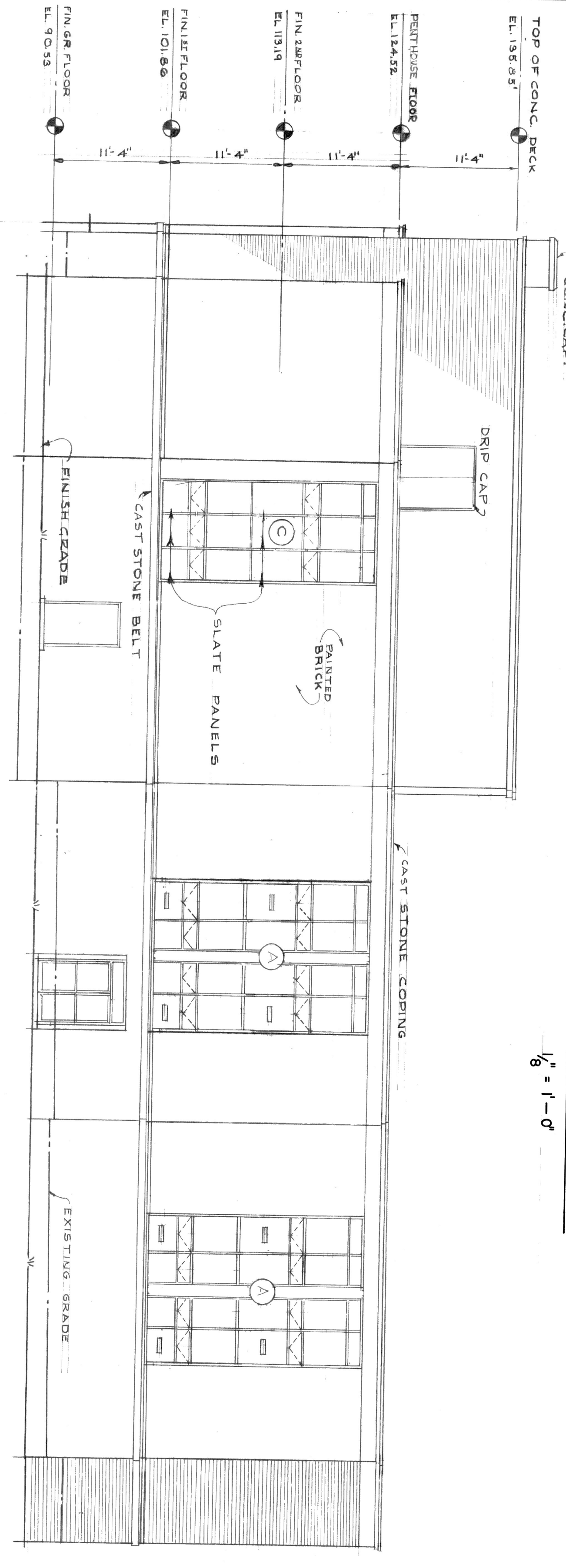


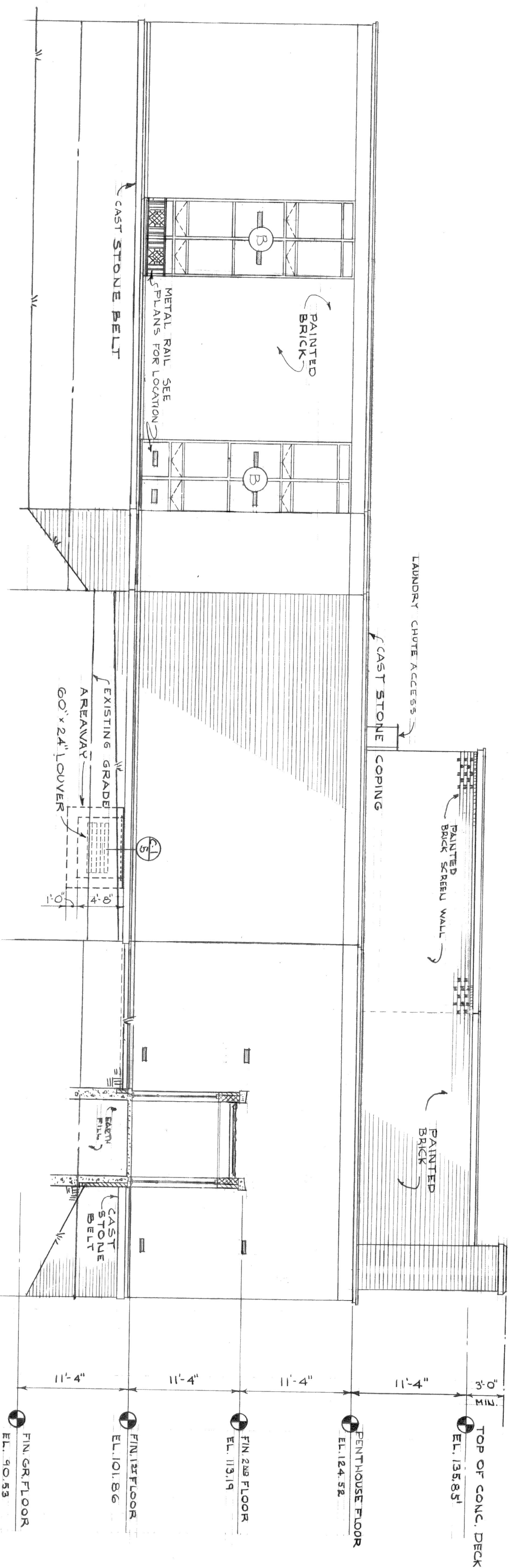
EAST ELEVATION
1/8" = 1'-0"



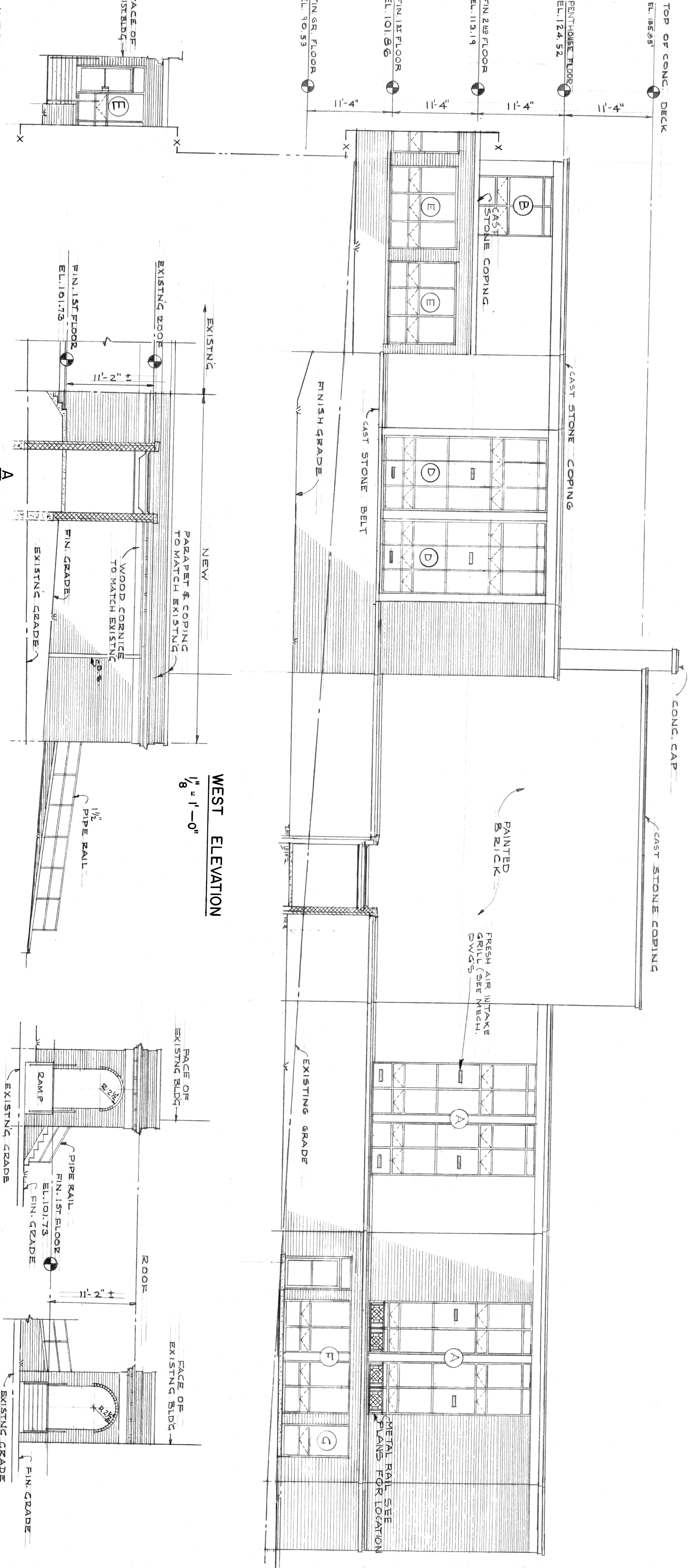
SOUTH ELEVATION AT ARCADE 08
1/2" = 1'-0"



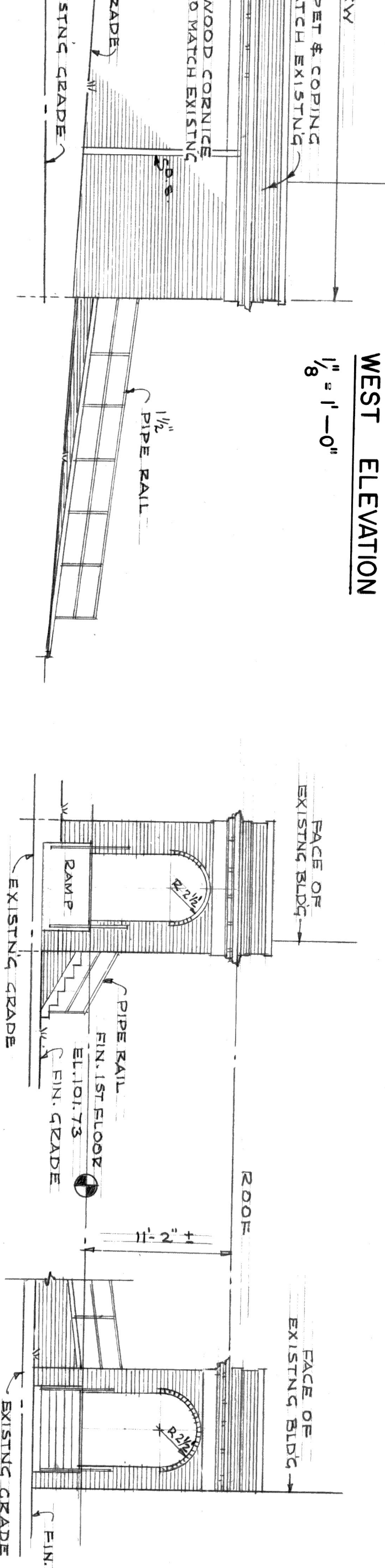
WEST ELEVATION
1/8" = 1'-0"



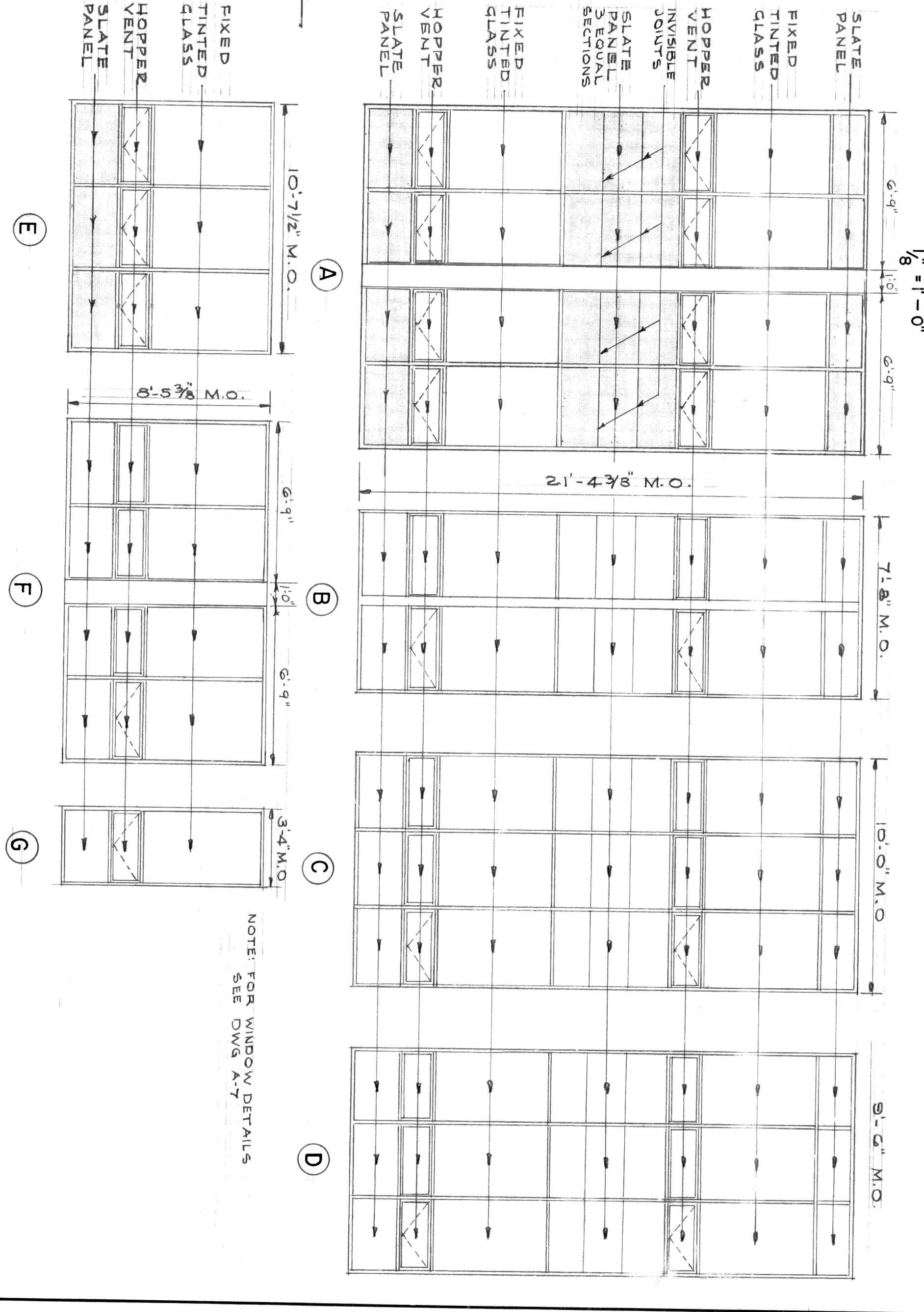
NORTH ELEVATION
1/8" = 1'-0"



SOUTH ELEVATION
1/8" = 1'-0"



WEST ELEVATION
1/8" = 1'-0"



NOTE: FOR WINDOW DETAILS SEE STD. DWS. A-7

WEST ELEVATION (CONT.)
ELEVATIONS AT SPACES A-1 8 A-2
1/8" = 1'-0"



ALTERATIONS & ADDITIONS TO GUGGENHEIMER MEMORIAL HOSPITAL
LYNCHBURG, VIRGINIA

CLARK NEXSEN & OWEN - ARCHITECTS
LYNCHBURG, VIRGINIA
NORFOLK, VIRGINIA

PROJECT NO. VA-208
ELEVATIONS
DRAWN BY: A-5
CHECKED BY: SPJ