

### The Jerry Bywaters Special Collections

**Wing** houses many archival collections concentrating on the visual and performing arts, especially in the American Southwest. Holdings include photographs, correspondence, scrapbooks, art exhibit catalogs, sketches, lithographs, slides, theatre programs, playbills, scripts, set designs, movie stills and posters and manuscripts. These collections document the careers and interests of artists such as Jerry Bywaters, Otis and Velma Davis Dozier, DeForrest Judd, William Lester, Octavio Medellin and Janet Turner, actress Greer Garson and musicians Paul and Viola van Katwijk. Other collections include the McCord/Renshaw Collection on the Performing Arts, which emphasizes theatre and film, and the Henry Potter Collection, which documents the work of Potter Metal Studio in Dallas.

The Jerry Bywaters Special Collections Wing is located in the Hamon Arts Library and is open weekdays from 9 a.m. – 5 p.m. Researchers are requested to make appointments in advance so that the required materials can be assembled and the appropriate curator made available.

### Contact Us

bywatersspecialcollections@smu.edu  
214-768-1860  
smu.edu/cul/hamon/bywaters



## SMU.

Mildred Hawn Gallery, Hamon Arts Library, SMU  
Hillcrest Avenue and Binkley Avenue

Open during regular library hours:

Monday through Thursday 9 a.m. – 12 a.m.

Friday 9 a.m. – 6 p.m.

Saturday 9 a.m. – 5 p.m.

Sunday 1 p.m. – 12 a.m.

For holiday hours, please call 214-768-1860.

smu.edu/hiddentreasures

A SECOND CENTURY CELEBRATION EVENT  
COMMEMORATING SMU'S FIRST 100 YEARS

# HIDDEN TREASURES

MARY MCCORD/EDYTH RENSHAW COLLECTION

RECEPTION

FEBRUARY 18

TAUBMAN ATRIUM  
OWEN ARTS CENTER



EXHIBITION

JANUARY 31 to MAY 13

MILDRED HAWN GALLERY  
HAMON ARTS LIBRARY



## SMU.



# HIDDEN TREASURES

of the Mary McCord/Edyth Renshaw Collection on the Performing Arts draws from this extensive collection, housed in the Jerry Bywaters Special Collections Wing of the Hamon Arts Library. The collection includes significant holdings in the history of theatre, film, music and dance. The McCord/Renshaw Collection was founded in 1933 by Department of Speech faculty members, including David Russell and Edyth Renshaw, and named in honor of Mary McCord, the first speech professor at SMU. The collection originally began as the McCord Theatre Museum and was located in Dallas Hall. While the museum succeeded in acquiring wonderful items throughout its 57 years as a separate entity on campus, a lack of funds and adequate staffing prevented completion of a full inventory. The collection is currently being processed, and many rare and important items have been discovered, the majority of which have never been exhibited. A number of these items are featured in the exhibition and concentrate on the collection's noteworthy resources in the history of SMU and Dallas, as well as the performing arts. The exhibition is intended to showcase the unique holdings of the McCord/Renshaw Collection rather than attempt to document the full scope of the history of the performing arts.

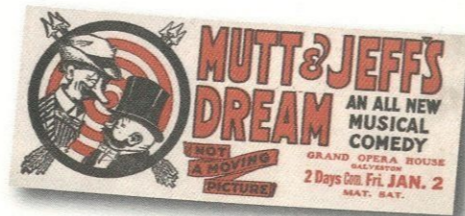
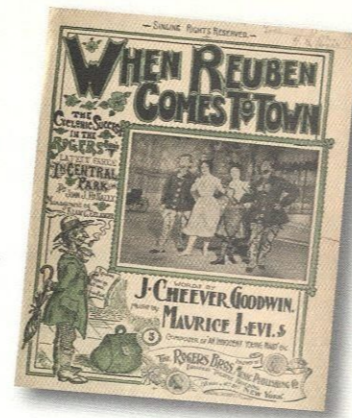
The activities of an early student theatre group provide a distinctive lens for viewing the history of SMU. Five years after its founding in 1911, SMU brought an additional dimension to theatre in Dallas. Professor Mary



McCord directed the first theatre production on campus, *As You Like It*, in conjunction with SMU's first commencement exercises in 1916. The Arden Club was subsequently formed and was the only theatre group on campus from 1916 through the 1960s, first under the direction of Mary McCord, then under her successor, Edyth Renshaw. Prominent Arden Club alumni include the late television producer Aaron Spelling and the late U.S. Senator John Tower.

The city of Dallas has a strong history of performing arts, concurrent with that of SMU. In the early 20th century, Dallasites took in plays, light opera and vaudeville at theatres such as the Lake Cliff Casino in Oak Cliff and Cycle Park Theatre in Fair Park. By 1921, the little theatre movement (forerunner of community theatre) had arrived in Dallas with the creation of the Little Theatre of Dallas. Until its closing in 1943, the Little Theatre of Dallas won national awards and often strived to include its local artists and playwrights in productions. Events such as the State Fair of Texas also brought considerable talent to Dallas. Beginning in 1886 and through the transformation of the fairgrounds as the site of the 1936 Texas Centennial Exposition, the State Fair was intrinsically linked to the performing arts, as exemplified by the *Cavalcade of Texas*, the Centennial's stage treatment of Texas' past as a historical epic.

The treasures of the collection encompass a diverse cross-section of performing arts and represent the wide-ranging forms of theatre, music, dance and film. The featured items from the art of theatre exemplify a variety of theatre history from early-20th-century Cairo to vaudeville performances in Central Park. Music is represented by items such as programs from the Weimar Opera House in Germany and Tin Pan Alley sheet music by Irving Berlin. Dance is represented by the myriad Ballet Russe companies. The invention and popularity of film in the entertainment industry is characterized by unique items such as envelopes from the 1951 Academy Awards. The performing arts also include lesser-known styles of performance such as marionettes, masked theatre performances and even the Ice Capades, which are all preserved and showcased in the holdings of the McCord/Renshaw Collection.



## GALLERY GUIDE

### Walls

Cycle Park Theatre, Dallas, Texas, 1907 (photograph)  
 Melba Theatre, Dallas, Texas, ca. 1936 (photograph)  
 Old Mill Theatre, Dallas, Texas, ca. 1925 (photograph)  
 Rialto Theatre and Capitol Theatre, Dallas, Texas, ca. 1935 (photograph)  
 Temporary Dallas Opera House, Dallas, Texas, 1901 (photograph)  
 Little Theatre of Dallas, Dallas, Texas, ca. 1927 (photograph)  
 Circle Theatre, Dallas, Texas, ca. 1936 (photograph)  
 Harlem Theatre, Dallas, Texas, ca. 1936 (photograph)  
 Palace Theatre (interior), Dallas, Texas, ca. 1921 (photograph)  
 Hancock Opera House, Austin, Texas, ca. 1930 (photograph)  
 Princess Theatre, Victoria, Texas, ca. 1923 (photograph)  
 Kline Opera House, Gonzales, Texas, n.d. (photograph)  
 Interior of the McCord Theatre Museum, photographed by Ellen Buie Niewyk, 1990  
 The Arden Club, *As You Like It*, 1916, Southern Methodist University (photograph)

### Cases

#### SMU

Arden Club Records, 1916-1917  
 Arden Club Records, 1917-1918  
 Arden Club members Bill Slack, Aaron Spelling, Bob Brickell and Nathan Wyl (photograph)  
 Arden Club, *Much Ado about Nothing*, 1920 (scrapbook pages)  
 Arden Club, *The Royal Family*, 1947 (poster)  
 Arden Club, *Accent on Youth*, 1951 (photograph)  
 Letter from Carol Burnett to J. Frederick Bailey, president of the Arden Club, 1966

#### Dallas

Lake Cliff Casino, 1912 (program)  
 Cycle Park Theatre, *The Gold Diggers*, 1924 (program)  
 The Little Theatre of Dallas, *Where the Dear Antelope Play*, 1941 (program)  
 The Little Theatre of Dallas, *Three Men on a Horse*, 1942 (program)  
 Loews-Melba Newsletter, 1926  
 The Little Theatre of Dallas, *Caesar and Cleopatra*, 1933 (photograph)  
*The Dallasite*, 1930 (publication)  
 Souvenir handkerchief from Dallas State Fair and Exposition, 1886  
 State Fair of Texas, 1912 (publication)  
 Texas Centennial Souvenir View Book, 1936  
*Cavalcade of Texas*, 1936 (photograph)

#### Film

Academy Award presentation envelope – Humphrey Bogart for Best Actor, 1951  
 Academy Award presentation envelope – Vivien Leigh for Best Actress, 1951  
*Chained with Joan Crawford and Clark Gable*, 1934 (lobby poster)  
 Set of *This Is the Army*, 1943 (photograph)  
 Set of *Jezebel*, 1938 (photograph)  
 Letter from Alla Nazimova to Jean Darnell, 1917  
 Christmas card from Mae West  
 Mickey Mouse Club campaign booklet

### Music and Dance

Theatre Municipal Du Chatelet, *Ballets Russes*, 1934 (program)  
 Royal Opera House Covent Garden, *Col. W. de Basil's Ballets Russes*, 1936 (program)  
*Wheatstone's Country Dances*, 1805 (publication)  
 Amelita Galli Curri, 1922 (program)  
 Cycle Park Orchestra, 1898 (photograph)  
 Weimar Opera House [Germany], *Goethe's Faust*, 1892 (program)  
 Irving Berlin, *If That's Your Idea of a Wonderful Time, Take Me Home*, 1914 (sheet music)  
 Dallas Opera House, *Hamlet*, 1892 (program)

### Theatre 1

Letter from Otis Skinner to Charles R., 1916  
*Uncle Tom's Cabin* (ticket stub)  
*Mutt and Jeff's Dream*, Grand Opera House, Galveston (ephemera)  
 Mrs. John Drew's Arch Street Theatre, 1876 (program)  
 The Rogers Bros., *When Reuben Comes to Town*, 1900 (sheet music)  
 Letter from David Belasco to Stark Young, 1928  
 The Music Box, *Chicago*, Jan. 17, 1927 (program)  
 Luna Park Heliopolis, Cairo, Egypt (program)  
 Cort Theatre, *Try and Get It*, 1943 (publicity)  
 Eddie Foy and the Seven Little Foy's (photograph)

### Theatre 2

Letter from Edwin Forrest, 1833  
*Charles Dickens's Dramatic Readings as Read in America*, 1882  
 Royal Lyceum Theatre, Henry Irving in *Macbeth*, 1889 (program)  
 Henry Irving autograph  
 St. James's Theatre, Oscar Wilde's *Lady Windermere's Fan*, 1892 (program)  
 Garrick Theatre, *Sherlock Holmes*, 1899 (photograph)  
 David Garrick as Richard the Third (engraving)  
 Martin Beck Theatre, *Romeo and Juliet*, 1935 (program)  
 Letter from Richard Mansfield to Eli Sanger, n.d.  
 Madison Square Garden, 1890 (program)  
 Takarazuka Girls Opera: Miss Atome Amatsu, Miss Yachiyo Kasugano, Miss Shidzuye Natsukawa (photographs)

### Miscellaneous

Tony Sarg's Marionettes, 1929 (poster)  
 Gold painted souvenir horseshoe from Greenville, Texas, Opera House, October 3, 1892  
 Copper printing plate from portrait of Mary McCord by Victor Lallier, ca. 1971  
 B.J. Simmons & Co. costume design sketchbook, 1869  
 Joan Blondell's fake eyelashes, 1952  
 Lou Walters' Latin Quarter (program)  
 Czech marionette  
 Ice Capades of 1944 (program)

For digitized items from the McCord/Renshaw Collection, please visit CUL Digital Collections at [smu.edu/digitalhiddentreasures](http://smu.edu/digitalhiddentreasures).