

Located at

PLACELABOUR.CAPITAL is NTU CCA Singapore's overarching year long research & education. This open-ended research and curatorial programme address the complexities of a world in flux and the dynamic and inseparable relation between the local and the global. The notion of place as a locale often fades into the background shadowed by the focus on the 'larger picture'. How does labour, routes of migration, and flows of global capital impact upon smaller scales? Singapore – the world's second largest trading port and an economic epicentre of Southeast Asia serves as point of departure and 'locale' to examine the entanglement between place, labour, and capital.

Coordinating curator: Anca Rujoiu

PLACE.
LABOUR.
CAPITAL.



Courtesy of Gary Ross Pastrana and DSM Solutions

C
EXHIBIT
101:

L 李
I 然

R
A
N

2.10.2015

29.11.2015

FOR UPDATES ON EXHIBITIONS AND PROGRAMMES, VISIT

facebook.com/ntuccasingsapore

ntuccasingsapore.org

EMAIL

NTUCCAevents@ntu.edu.sg

OFFICE

+65 6460 0300

Free admission to exhibitions, public programmes, and tours.

Open on Public Holidays.

Tue – Sun 12 – 7pm, Fri 12 – 9pm, Mon Closed.

EXHIBITION HOURS

Blocks 37 & 38, Malan Road Singapore 109452 & 109441

RESIDENCES STUDIOS

Block 6 Lock Road, #01-09/10, Singapore 108934

OFFICE & RESEARCH CENTRE

Block 43 Malan Road, Singapore 109443

EXHIBITIONS

exhibitions, residences, research & education.

holistic approach towards art and culture, intertwining its three platforms:

Founding Director, Professor Ute Meta Bauer, NTU CCA Singapore takes a

Singapore Economic Development Board, NTU CCA Singapore is located in

Nanyang Technological University. Developed with support from the

Opened in October 2013, NTU CCA Singapore is a national research centre of

NTU CENTRE FOR CONTEMPORARY ART SINGAPORE

NTU CENTRE FOR
CONTEMPORARY
ART SINGAPORE

G P
A R A
R O S
Y S T
S R
A N
A
A

EXHIBIT 101 :

A STAGED PROJECT OF WORK—IN—PROGRESS IN *THE LAB*, NTU CCA SINGAPORE'S SPACE FOR EXPERIMENTATION

A
N

Unfolding over two months, Artists-in-Residence Li Ran and Gary Ross Pastrana will develop projects in *The Lab*, which are speculations on how an image is created and deconstructed. *Exhibit 101* alludes back to the idea of how to create an exhibition, as both artists are from countries (China and The Philippines) that are in the continuous cycle of institution building. Using the method of the basic "how-to" as a manual, both artists are creating work which gently critique how this methodology is often applied.

GARY ROSS PASTRANA

Gary Ross Pastrana hired a group of young Singaporean creatives to stage a "Contemporary Southeast Asia Art Exhibition-Themed Event", *An ASEAN Exhibition 1* (2015) at *The Lab* creating an artistic gesture around the idea of Southeast Asia as a reference with no

1. *UP IN ARMS* (2015), COURTESY OF DSM SOLUTIONS
PRODUCED BY A CRAFT INITIATIVE



visual referent. The installation is the result of the artist Gary Ross Pastrana engaging DSM Solutions to prototype props that could stand in for Southeast Asian artworks. In this manner, the artist has effectively outsourced the sometimes-problematic task of representing Southeast Asia, an implied obligation of artists invited to regionally themed group exhibitions within the region.

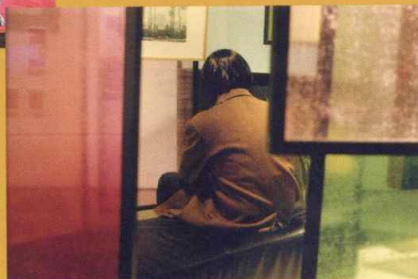
In this staged event we see the function of diplomatic imagery through some of the props on display, whilst also playing testament to common tropes of archetypal pop images found across the region. Within the realm of contemporary art, Pastrana commented that this may be one of his only opportunities to effectively outsource this kind of service, a reversal of labour position from a third world to first world context.

LI RAN 李 然

Li Ran presents a new project *Waiting for the Fog to Drift Away*. An initial placeholder work will be used at the opening of the project, Li's *Continue to Write a Story in the Exhibition Hall* (2014), an installation centred on a "first encounter" within a European modern art museum.

Working with Singapore Management University (SM-U) Assistant Professor Rowan Wang a specialist in overall planning science, Li will

2. *CONTINUE TO WRITE A STORY IN THE EXHIBITION HALL (STILLS)* (2014)



1.

2.

conduct interviews to gain planning advice from Wang. He will attempt to define the most successful trajectory for the life of an artist as a business entity, estimating production levels and peaks and troughs in key life moments. Throughout the duration of the project, Li will use this as the site for the development of his new work, referencing older material in his practice as well as using it as production space for filming the new piece. Within *The Lab* he will reveal thought processes, mimicking management style as well as research in development.

A
S
E
A
N
X
H
I
B
I
T
O
N

W
A
F
I
O
T
G
I
N
T
G
O
F
D
O
R
R
I
F
T
T
H
E
A
W
A
Y

1

ARTISTS' WORKSHOP, *THE LAB* SATURDAY, 07.11.2015, 2.30PM – 4.00PM