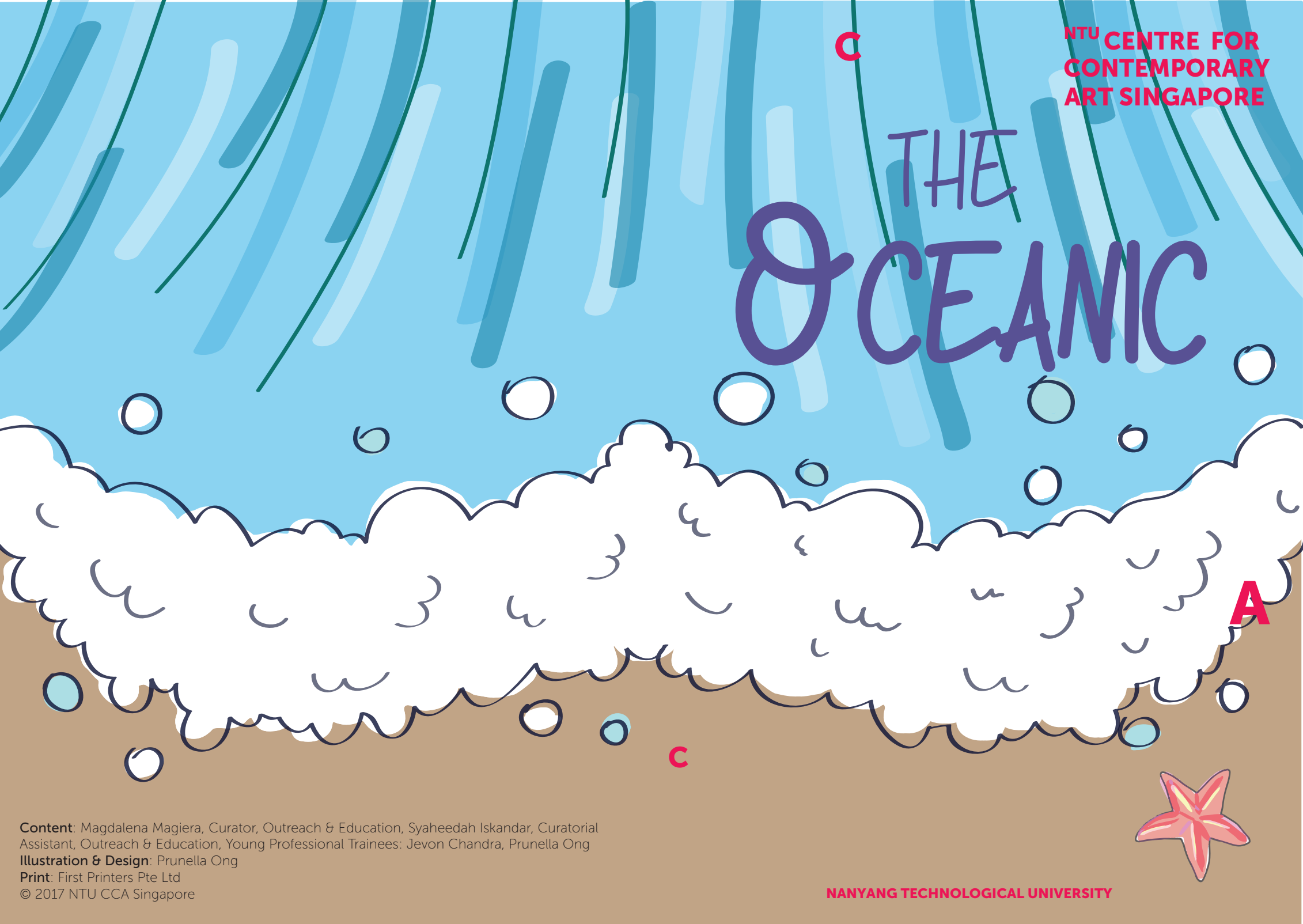


# THE OCEANIC



**Content:** Magdalena Magiera, Curator, Outreach & Education, Syaheedah Iskandar, Curatorial Assistant, Outreach & Education, Young Professional Trainees: Jevon Chandra, Prunella Ong

**Illustration & Design:** Prunella Ong

**Print:** First Printers Pte Ltd

© 2017 NTU CCA Singapore



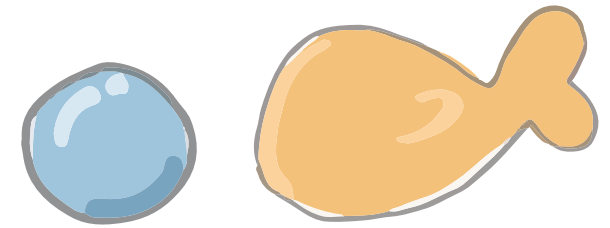
# Introduction

Ahoy explorers, welcome to *The Oceanic!*

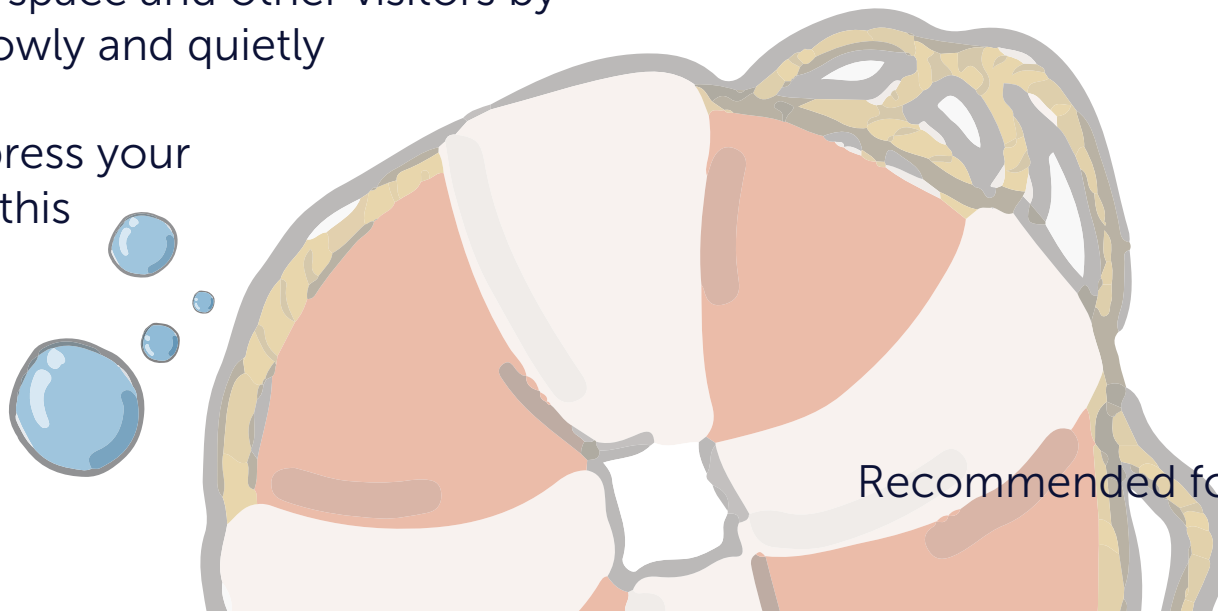
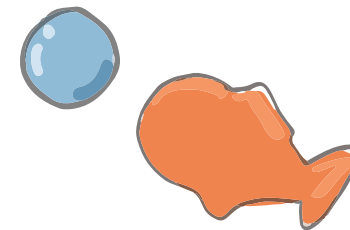
In this exhibition, you will learn about the importance of the ocean for humans and other lifeforms. Yet, through careless actions, we harm the sea, the animals in it, and the people who depend on the sea for their livelihoods.

As we explore the gallery on our voyage, let us remember to:

- 1) Respect the space and other visitors by exploring slowly and quietly
- 2) Draw or express your thoughts in this booklet



## Who does the sea belong to?



Recommended for ages 10 and above

# Describe your experience being in the exhibition.

**LISTEN** to the sounds from the artworks.  
Which words describe what you hear?

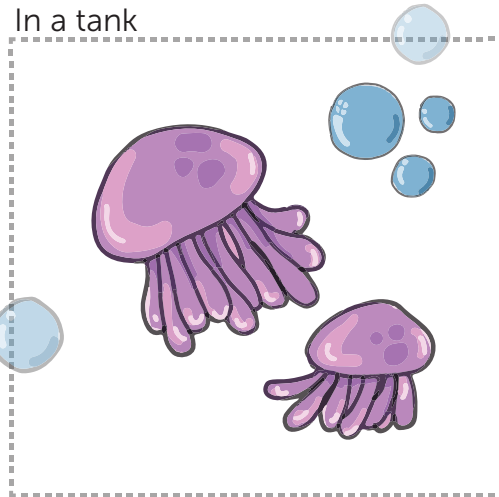
**COMPARE & DISCUSS** with your friends.

**COMPARE** how viewing the works change when you listen to PerMagnus Lindborg's sound piece as you walk around the exhibition.



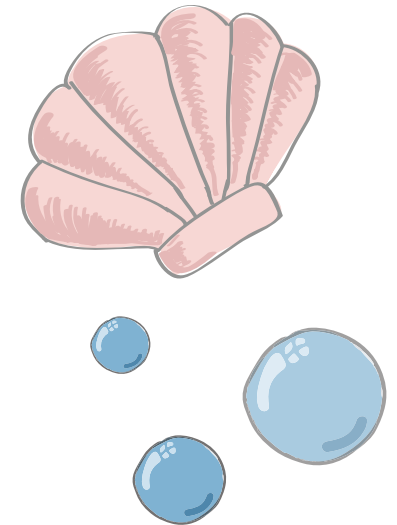
**FIND** *Tamoya Ohboya* by Tue Greenfort. Jellyfish are highly adaptable creatures! They are known to morph depending on the environments they live in.

**DRAW** what you think jellyfish would look like in different habitats below!

<p>In a tank</p> 	<p>In a lake</p>
<p>In the Tropics</p>	<p>In the Arctic</p>

**IMAGINE** If you migrated to a foreign land, what would you do to adapt to your new environment?

What is your relationship to the sea and what is the long-term effect of this relationship?



**SHARE** your thoughts with your friends and family.



**FIND** *Ocean Calling* by Laura Anderson Barbata.

**IDENTIFY** some of the materials used to make these outfits.  
**DRAW** a series of actions to show how we can protect the sea.

**FIND** *(Untitled) Nimoa and Me: Kiriwina Notes* by Newell Harry.

**OBSERVE** the photographs. What do they suggest about life on an island?



# What are humans doing to the sea?

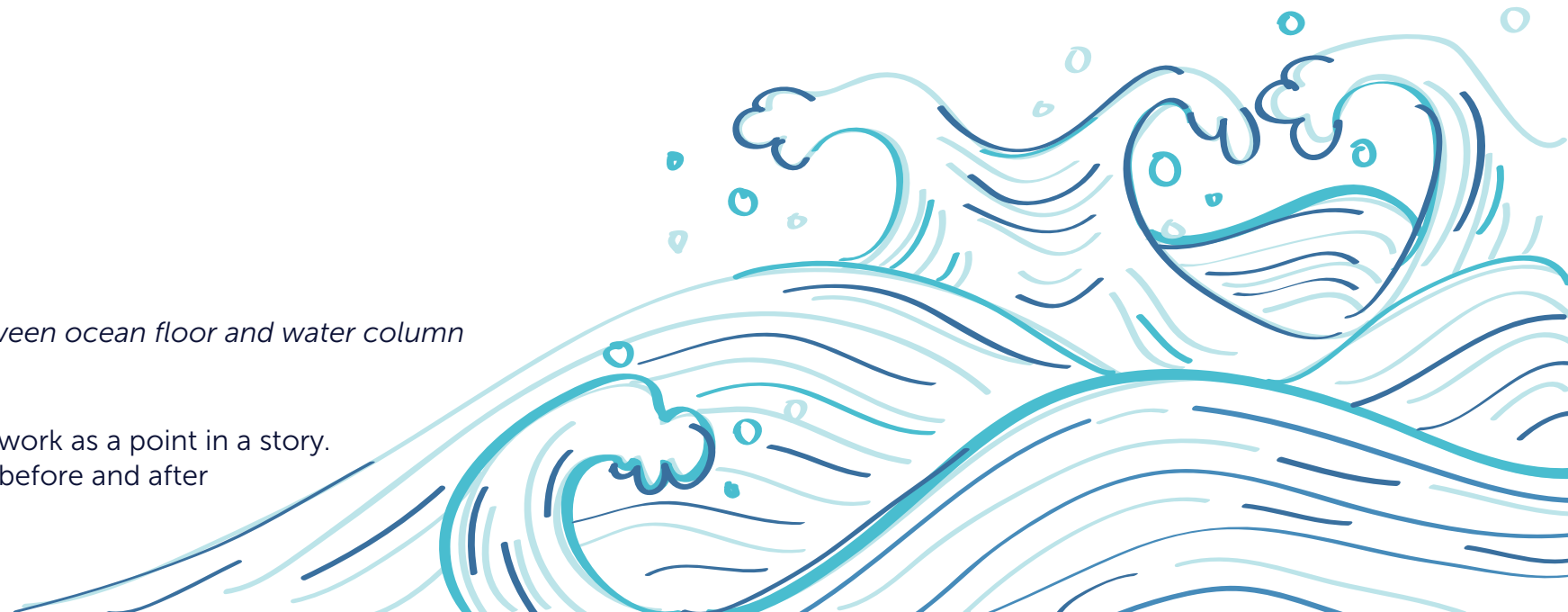
**FIND** *Europium* by Lisa Rave.

**DID YOU KNOW?**

Traces of Europium are found in Euro dollar notes, televisions, and even in the screens of your digital devices!

**FIND** *OCEANS. Dialogues between ocean floor and water column* by Armin Linke.

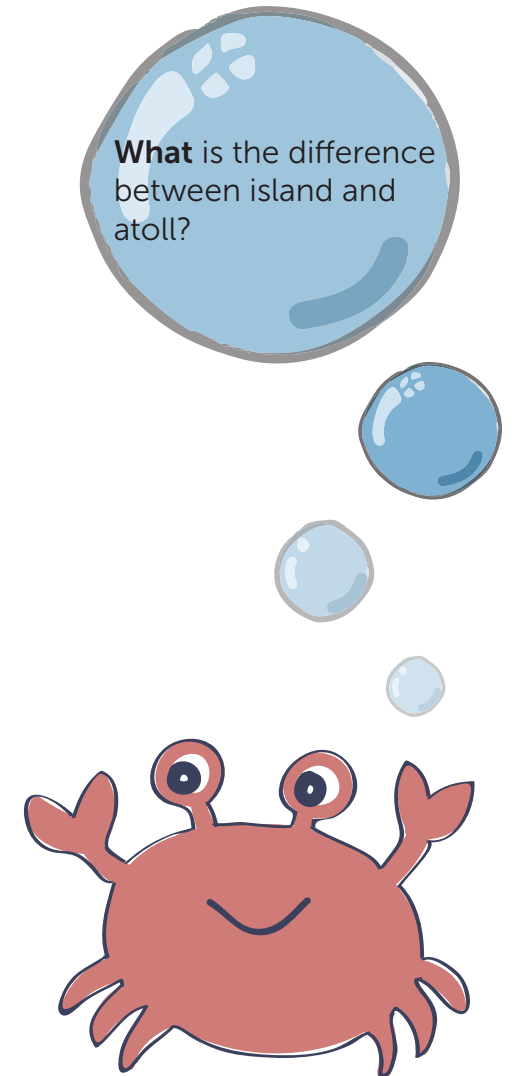
**IMAGINE** one scene from this work as a point in a story. Draw what you think happens before and after that point!



**FIND** *Tepoto Sud morph Moruroa* by Atif Akin.

**WRITE** a myth about Singapore waters using your five senses.

*On a deserted atoll ...*



# Does the sea belong to anyone?

