



1911-1936

*Silver Jubilee*

OF

THE CHURCH OF

St. Benedict The Moor

FEBRUARY 2nd, 1936

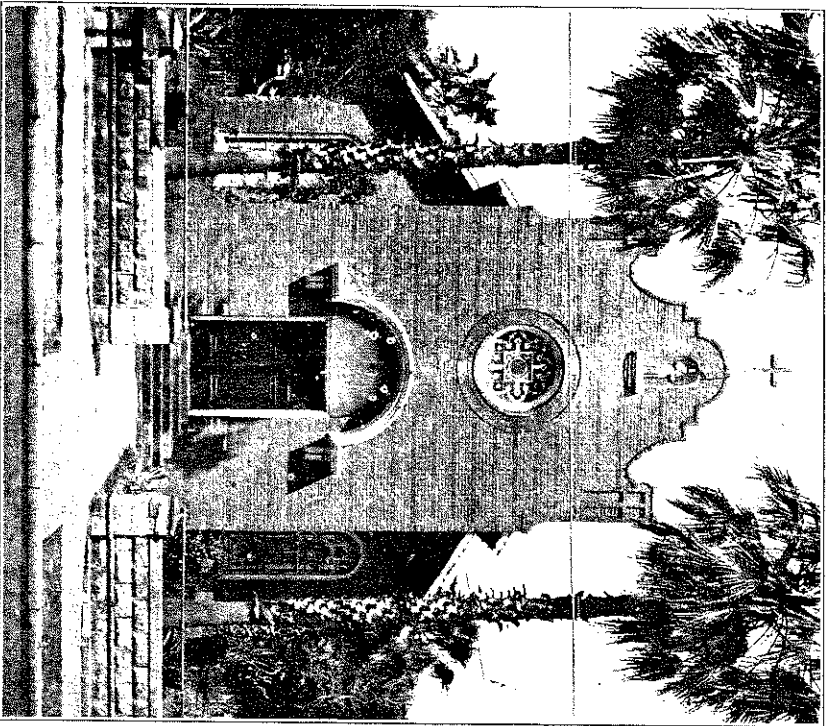
St. Augustine, Florida

**CONGRATULATIONS**  
**Upon The Occasion**  
**OF THE**  
**Twenty-fifth Anniversary**  
**OF THE**  
**Church of St. Benedict The Moor**

---

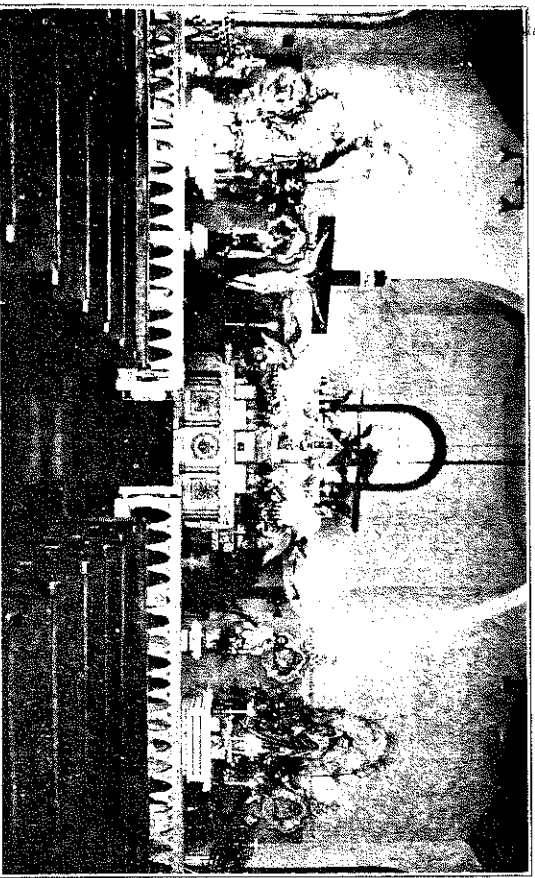
**The St. Augustine National Bank**  
**ST. AUGUSTINE, FLORIDA**

This Jubilee Souvenir is gratefully  
dedicated to the Most Reverend Pat-  
rick Barry, D. D., whose paternal love  
and affection for St. Benedict The  
Moor is well known.

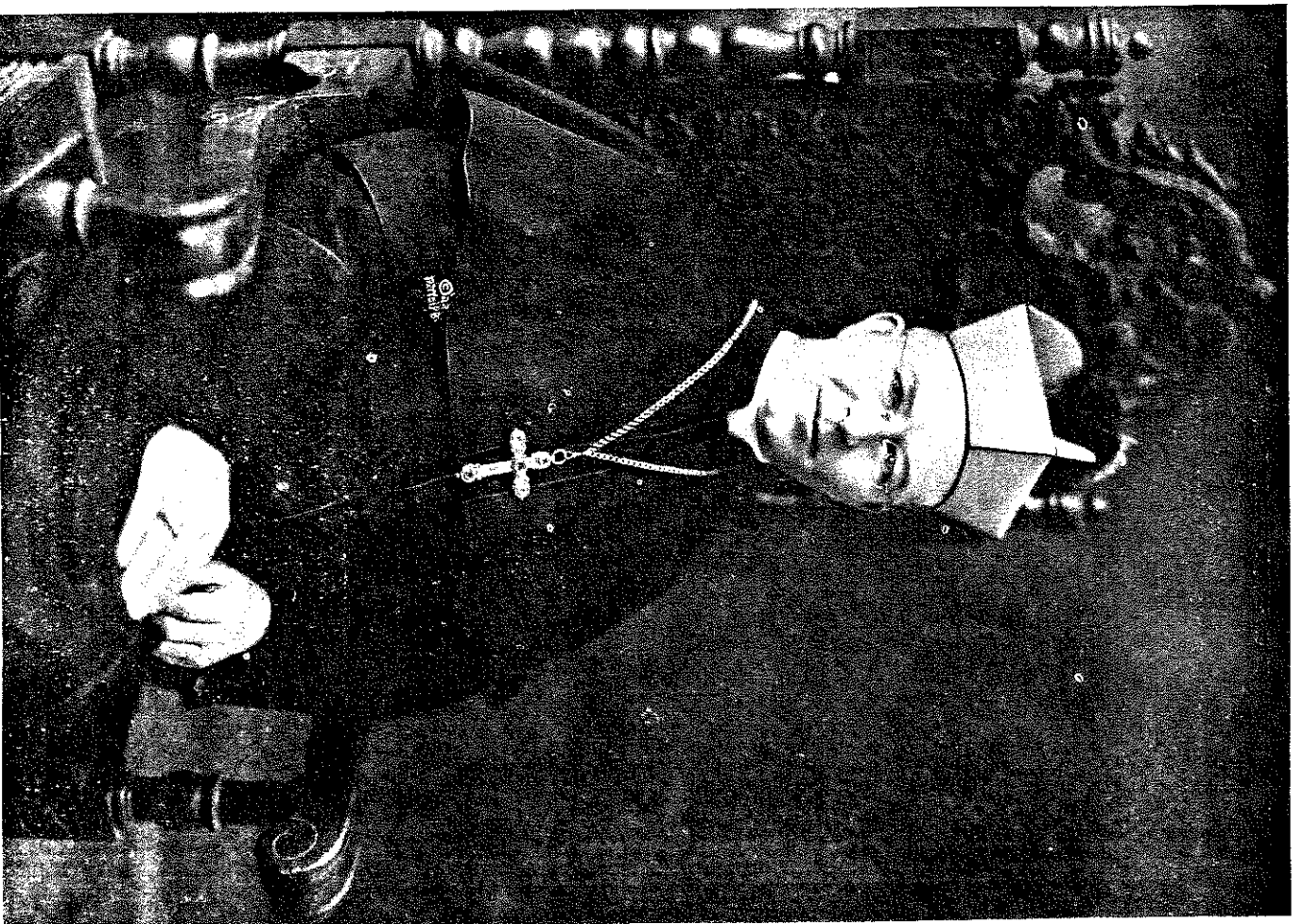


EXTERIOR VIEW

JOSEPHITE ARCHIVE



INTERIOR VIEW



+ P. J. J. J.



MOST REV. MICHAEL J. CURLEY, D. D.  
Archbishop of Baltimore, Md.

JOSEPHITE ARCHIVES



THE VERY REVEREND LOUIS B. PASTORELLI, S. S. J.  
Superior-General of the Society of St. Joseph of the Sacred Heart

# CHURCH HISTORY

The Silver Jubilee Celebration of the dedication of the Church of St. Benedict The Moor is an event of which its people may justly feel proud. A word about the spiritual condition of the Colored Catholics of St. Augustine before the erection of the church is entirely in order.

The colored Catholics received the necessary ministrations from the Cathedral Clergy as well as from the good Sisters of St. Joseph. The good work done before the arrival of the Josephite Fathers in 1914 can never be overestimated. A few folks still living who can recall the period immediately following the War between the States speak with the highest praise and commendation of the many priests who attended to their spiritual wants. The names of Bishops Verot and Moore and the saintly Father Claveau are often on their lips.

A Catholic school under the supervision of the Sisters of St. Joseph was in existence shortly after the Civil War, its first location being the present site of St. Joseph's Academy and later on it was located on Cathedral Street at the present site of the St. Augustine National Bank.

In 1890 the property on Central Avenue was deeded to Bishop Moore by Mlle. Stella Dumas, an elderly French lady who came from Charleston, S. C. It was the plan of the Bishop to erect a church and a school and to use the rest of the property, covering one whole square, as a site for the erection of dwellings, the income from which would help toward the support of a resident priest.

The school was erected in 1898 at a cost of \$7,500, five thousand of which was donated by Mother Catherine Drexel. The building still serves its original purpose, and from its portals have emerged many converts to the Church. In every truth may this school be said to be the nursery of St. Benedict's Church.

The cornerstone of the beautiful St. Benedict's was laid by the Most Reverend Bishop William J. Kenny, D. D. and its actual construction was under the supervision of the then Rector of the Cathedral, the lamented Bishop Maurice P. Foley, D. D. Divine Providence had ruled that Bishop Foley was not to be present at the dedication of the church, as he had been appointed Bishop of Tuguegaro, and was then on his way to his diocese in the Philippines. The

Compliments of

GRANADA FURNITURE CO.

44 GRANADA STREET

PHONE 732-W

Compliments of

A. J. HUFF

FUNERAL HOME

114 Central Avenue

Phone 1317

Compliments of

F. E. BOYCE, Sheriff

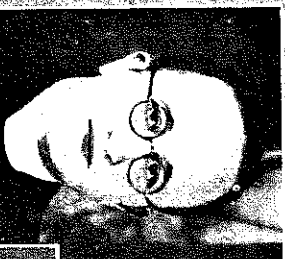
Compliments of

SILAS E. DAVIS, PLUMBING

69 Sanford Street

Phone 328

## PASTORS



REV. FRANCIS L. LINTON  
S.S.J.  
1920 — 1924



REV. EDW. J. BLASIUS  
S.S.J.  
1931 —



REV. JAMES B. ALBERT  
S.S.J.  
1914 — 1916



REV. JOHN J. LYONS  
S.S.J.  
1916 — 1920



REV. EDW. A. KNIGHT  
S.S.J.  
1924 — 1931

St. Benedict the Moor

Compliments of

ST. AUGUSTINE GAS CO.

30 CATHEDRAL PLACE

PHONE 182

Compliments of

MR. and MRS. DAN FITZPATRICK

Compliments of

GEORGE JUSKO

Compliments of

FLORIDA POWER & LIGHT CO.

KING STREET

PHONE 718

Compliments of

THE ICEBERG

74 BRIDGE STREET

PHONE 197

JOSEPHITE ARCHIVES

**Compliments of**

**MANUCY-COLLEE REALTY, Inc.**

**124 CHARLOTTE**

**PHONE 563**

**Compliments of**

**OBE P. GOODE**

**Compliments of**

**Bay Cleaning and Press Shop**

**214 CHARLOTTE ST.**

**PHONE 118**

**CHURCH HISTORY—Continued**

church was dedicated February 5th, 1911 by the Most Reverend Bishop W. J. Kenny. From then until 1914 it was a Mission in charge of the Cathedral clergy.

In the Fall of 1914 Most Reverend Michael J. Curley, D. D., then Bishop of St. Augustine, now Archbishop of Baltimore, Md., invited the Josephite Fathers to take charge of St. Benedict's. Archbishop Curley is often mentioned by the colored people for his many acts of kindness towards them even when he was a humble assistant at the Cathedral over thirty years ago. His interest in the colored people as Bishop of St. Augustine was not diminished in the least as their chief Shepherd.

When The Most Reverend Bishop Patrick Barry took charge of the See of St. Augustine the people of St. Augustine the people of St. Benedict's rejoiced as they had known of his good work done among the colored of Jacksonville, Florida, as the assistant at the Immaculate Conception, and his love for them as Rector of the Cathedral at St. Augustine, shown by his many acts of kindness in spiritual and temporal matters. During his reign as Bishop for nearly fourteen years he has been a true and loyal friend of St. Benedict's. The people of St. Benedict's consider him a spiritual Father in a real and true sense.

The first Pastor of St. Benedict's was Father James B. Albert, S. S. J., whose work still bears fruit in the Ancient

**Compliments of**

**THOMPSON-RYMAN REALTY CO.**

**CATHEDRAL PLACE**

**PHONE 500**

**Compliments of**

**RECTOR'S CAFE**

**Seashore Dinners — Cooked to the King's Taste**

**Cathedral St.**

**Compliments of**

**Albert Crutchfield Electric Shop**

**113 ST. GEORGE ST.**

**PHONE 465**

**Compliments of**

**CRAIG FUNERAL HOME**

**22 GRANADA ST.**

**PHONE 74**

JOSEPHINE ARCHIVES



**Compliments of**

**PLUMMER'S DAIRY**

31 WHITNEY STREET

PHONE 1059

**Compliments of**

**C. F. HAMBLÉN, Inc.**

Hardware — Heating a Specialty — Sporting Goods

3 King Street

Phone 10

**Compliments of**

**POMAR'S CIGAR FACTORY**

88 ST. GEORGE

PHONE 610

**A K R A S**

176 ST. GEORGE STREET

**CHURCH HISTORY—Continued**

City. To him was allotted the task of erecting a suitable rectory. His zeal knew no bounds.

In July, 1916, Rev. John J. Lyons, S. S. J., was appointed Pastor. He was most devoted to his flock. His heroic work during the influenza epidemic nearly brought him to an untimely end. He labored at St. Benedict's until 1920.

**Compliments of**

**The Catholic Daughters of America**

COURT NO. 23

**Compliments of**

**THE RECORD CO.**

St. Augustine, Florida

**Compliments of**

**P. A. WOLFE, PHOTOGRAPHER**

163 St. George Street

Phone 641

**Compliments of**

**ST. PIUS' CHURCH**

Jacksonville, Florida

JOSEPHINE M. HARRIS

Compliments of

SPANISH CAFE

121 RIBERIA ST.

PHONE 993

Compliments of

St. Augustine Music & Furniture Co.

PHONE 373

Compliments of  
S. A. SNYDER

48-50 GRANADA

PHONE 333

#### CHURCH HISTORY—Continued

In November 1920 the Reverend Francis L. Linton, S. S. J. was appointed Pastor. He did much to improve the church. He had the bell tower erected and placed, stained glass windows in the church. He was a mild and gentle shepherd.

In August, 1924, the late lamented Father Edward A. Knight, S. S. J. was appointed Pastor. He did much to beautify the church and to make improvements to the parish buildings. He was a zealous and painstaking priest. One bright morning in the month of August, 1931, a great sadness fell upon the Colored of St. Augustine. Leaving to go north on a well earned vacation, as also to plead for funds for his Mission Church, erected by himself in New Augustine, Father Knight met an untimely end in a tragic automobile accident.

The present Pastor, Reverend Edward J. Blasius, S. S. J. was appointed September 1st, 1931. He can well testify to the loyalty of his flock during the years of the depression, as the people of St. Benedict's suffered much from

Compliments of

A FRIEND

Compliments of

McGirt Family

(Alex McGirt)

## CHURCH HISTORY—Continued

the collapse of the land boom and the bank failures. Despite these economic and financial setbacks they were ever ready to do their part and to make sacrifices unequalled in the history of St. Benedict's.

**SOCIETIES:** The people of this Parish can feel justly proud of their societies, as some were established even before the Civil War. The Society of St. Frances de Chantel was established under the supervision of the Sisters of St. Joseph by Bishop Verot in 1860. This Society still boasts of a Constitution written by Bishop Verot in his own handwriting, and it still remains unchanged.

The Young Ladies Society of St. Cecilia was established in 1869 and is still in a healthy condition, probably the oldest society for young ladies in St. Augustine.

The Men established a Society of St. Benedict. This was a Benevolent Society and has not survived to the present day.

In 1887 a Branch of the Knights of St. John, Com. No. 87 was established for the men of the parish, its present membership embracing goodly numbers.

There is also an auxiliary of the Knights of St. John's Branch No. 23, established in 1897 which has a large membership.

These societies take care of the sick and dying by attending to their temporal wants, and providing for their spiritual care. The many acts of kindness will be known only when the Recording Angel opens the Book of Good Deeds Well Done, on the Last Day.

Father Blasius of St. Benedict's is proud of the privilege accorded to him as its Pastor on this its Silver Jubilee Year, and he rejoices and he is glad. In the midst of this rejoicing he is not unmindful that there are many problems to be solved, many difficulties to be borne, but stimulated by the sympathetic understanding and the assured cooperation of his good Colored people he faces the future with confidence and courage. Ad Multos Annos!

JOSEPHINE ARCHIVES

Compliments of  
**JENNIE F. WEIR**

**JEFFERSON BUILDING**

**PHONE 751**

Compliments of  
**SURPRISE STORE**

**PHONE 707**

Compliments of  
**WILBUR'S GARAGE**

**PHONE 311**

Compliments of  
**JEFFERSON THEATRE**

Compliments of

**T. ROGERO MICKLER**

**JUDGE BERTRAM C. MICKLER**

Compliments of

**A FRIEND**

# PATRONS

Selma DeLarge	William Murry
Rebeca Desmore	S. C. Middleton
Kata De Roache	Mary Martin
Mattie Floyd	O. J. Mills
Vernon Fleming	T. J. McCall
Emma Forward	Katherine McCall
Lavenia Glover	Clara Mier
Jennie Granger	Carrie Macon
Charles Granger	Caroline Morton
Playtell Glass	Bell Natiel
Lillian Humes	Mary Natiel
Lula Harris	Alexander Natiel
William Hawkins	William O'Dell
Mildred Jones	Estelle Preston
Clarence Jones	Theresa Plummer
Harriet Kirkman	Louis J. Plummer, Jr.
Agnes Kelton	Joseph Plummer
Jane Kelton	Sophorina Rivers
Charles Kelton	E. Richardson
Margaret Kelton	Lulu Rivers
Mary A. Murray	Gertrude Saxon
John Burns	William Saxon
Charles Bram	George Snow
George Blake	Sadie Schwecke
Jos. Blanchard	Herman Schwecke
Daniel Blanchard	Bessie Twine
Elizabeth Burns	Sophie Thomas
Anna Burns	Frank Van Dyke
John Burns, Jr.	Lucinda Wilson
William Byrt	J. N. Williams
Morris Blanchard	Hattie Williams
Louis Benjamin	Ira Williams
Stanley Blake	Lucille Wilson
George Blake	Anna Wilson
Jeff Clarke	James Wetters
Louis Colee	Frank Wetters
Juie Crampton	Sallie Wetters
William Condro	Samuel Williams
Jennie Crummer	Mathew Zipfel
John Chaisson	A Friend
Gertrude Calhoun	A Friend
Rosa Denison	A Friend
May Mendez	Louis Lamb
Stephen Martin	Lena Blake
	Grace Payton

Compliments of  
Standard Printing and  
Office Supply Co.

63 HYPOLITA ST.

TELEPHONE 440

JOSEPHINE ARCHIVES

*St. Benedict the Moor, St. Augustine, Fla.*

Pastors

James B. Albert	1914-1916
John J. Lyons	1916-1920
Francis P. Linton	1920-1924
Edward A. Knight	1924-1931
Edward J. Blasius	1931-1937
Matthew P. Morrissey	1937-1939
Charles J. Crowley	1939-1942
Joseph G. Turner	1942-1948
Arthur J. Flanagan	1948-1954
Michael J. Flaherty	1954-1960
Vincent J. Kelleher	1960-1966

Assistants

Joseph F. Murphy	1939-1941
John R. Timpany	1942-1943
George A. Reynolds	1943-1946
Edward T. Farrell	1946-1948
John A. Wilson	1948-1950