

Spring 2020 Education Newsletter

Soil & Water Conservation District

PCSWCD
MAINE
WATER
CONSERVATION
DISTRICT



We installed a new wood duck box at the [Law Farm!](#) We look forward to checking it next winter and will report if it has been used! Feel free to take a walk out to the board walk and take a look!

In This Issue:

- ◇ **IMPORTANT: COVID-19 Update from the PCSWCD**
- ◇ **A Fun Way to Support the PCSWCD!**
- ◇ **PCSWCD Events—Updates, Changes, New Programs & More!**
- ◇ **Welcoming Widdershins Livestock to the Law Farm**
- ◇ **Maine Bird Atlas Program from MEIF&W**
- ◇ **Invasive Forest Pests—Impacts & Actions**
- ◇ **Pollinator Week 2020: Ways to Celebrate**
- ◇ **Print-Out: Build a Bird Nesting Box!**
- ◇ **Carbon Conversation—A New Program from PCSWCD**
- ◇ **Building on our Chainsaw Safety Offering**
- ◇ **PCSWCD Volunteer News & Thank Yous**
- ◇ **Write a Different Story for Your Lake or Pond with LakeSmart**
- ◇ **Fun Nature-Based Activities to do Close to Home!**

Our mission is to be a leader in agriculture and forestry by providing education and technical assistance to promote conservation of the natural resources upon which we depend.

PISCATAQUIS COUNTY SOIL & WATER CONSERVATION DISTRICT'S RESPONSE TO COVID-19

A Message from Kacey Weber, Educational Coordinator

Let's take a moment to breathe together. This has been a challenging time. We are all doing what we can to keep ourselves and our communities healthy as we navigate the COVID-19 global pandemic. As things progress and change, we have all had to adapt and do so quickly. We should be proud of our collective response and continue to follow directives from national and state health officials and local leaders.

The Piscataquis County Soil and Water Conservation District closed our physical office on March 13th at 4:30PM, in an effort to protect our valuable staff and constituents. Our office is closed until May 1st, opening on May 4th at 8AM, although this date is subject to change. Our entire staff is currently telecommuting and able to serve our customers, communicate with program presenters and participants and continue our valuable work. We have posted updates about and at the Law Farm—we encourage folks to utilize this public space, but to plan ahead and refrain from using the privy. We have also shared information about the Demonstration Forest, another public land owned and maintained by the PCSWCD. We hope these two public lands can provide a safe outdoor place to explore while social distancing.

As we progress through this, we have had to make changes to a number of our programs. For clarity, we have included a full list of our events, with updates and changes listed for each one. **See page 3 for this list.**

Both our Tree & Plant Sale and Trout Sale are still on. Since both sales are designed as pre-order sales, we feel that we will be able to manage pick-up days to ensure the safety of our customers. Orders for our Tree & Plant sale are due by April 15th and Trout Sale orders are due by May 18th, 2020. Tree & Plant Sale orders should be **mailed with payment** to 42 Engdahl Drive, Dover-Foxcroft, ME 04426 **OR can be emailed to info@piscataquisswcd.org and paid via paypal—[paypal.me/piscataquisswcd](https://www.paypal.com/merchot?page=piscataquisswcd)**. This year, all plants available to order are sourced from three local, Maine farms—Checkerberry Farm in Parkman, Ripley Farm in Dover-Foxcroft and North Branch Farm in Monroe. All three farms are following CDC guidelines and are working hard to ensure the safety and quality of the products you will order. **FMI on the Tree & Plant Sale, including access to the full catalog and order form, visit our Tree & Plant sale page here: <http://www.piscataquisswcd.org/tree-and-plant-sale/>**. For the Trout Sale, customers with a valid State of Maine stocking and transporting permit can purchase 6-8 inch brook trout for \$3/fish. Stocking private ponds provides both recreation and nutrition—a win, win! **For Trout Sale information and ordering, visit our Trout Sale page here: <http://www.piscataquisswcd.org/trout-sale/>**.

We want to thank you all for your continued support. Postponing events and not being able to carryout programming has had a deep impact on our organization. If you are able, we ask that you consider donating your registration fee if we need to reschedule a workshop, read about and consider being a [Conservation Champion](#) and stay in touch with us. We appreciate any support you are able to provide.

Stay well and safe, friends! *Lynn Lubas, Technical Coordinator—info@piscataquisswcd.org, Sarah Robinson, Executive Director—sarah.robinson@piscataquisswcd.org, Kacey Weber, Educational Coordinator—katherine.weber@piscataquisswcd.org*



A FUN Way to Support the PCSWCD!

PCSWCD is participating in LIFE VEST, a free fundraising channel created by an original Maine Native and Foxcroft Academy graduate, Gabe Schmand. The mission is to help businesses collaborate in raising funds together while affected by COVID-19. You can purchase your PCSWCD T-shirts and support our non-profit organization by PRE-ordering them from this link-

https://stores.inksoft.com/life_vest/shop/product-detail/1000224

50% of every t-shirt sale goes directly to supporting PCSWCD!



PCSWCD 2020 EVENT UPDATES:

We follow COVID-19 state guidelines and reschedule/postpone as needed.

Follow us on www.piscataquisswcd.org and Facebook for the most up-to-date information.

Grafting Fruit Trees with CJ Walke—Scheduled for April 4th, rescheduled to Spring 2021. CJ has provided us with grafting fact sheets and videos, which can be emailed to anyone interested.

Bird ID Made Easy with Bob Duchesne—Scheduled for April 11th, rescheduled to Spring 2021. We are working with Bob to provide some online resources.

Renovating Old Apple Trees with CJ Walke—Scheduled for April 18th, rescheduled to Spring 2021. Resources available upon request.

Bird Walk at the Law Farm with Bob Duchesne—Scheduled for May 2nd and full. To be added to the wait list, email us at info@piscataquisswcd.org

PCSWCD Tree & Plant Sale—Pre-orders due April 15th, pick up May 9th at the Piscataquis Regional Food Center.

PCSWCD Trout Sale—Pre-orders due May 18th, pick up May 20th at Morton Ave Gym.

Chainsaw Safety for Women—Rescheduled for September 18th & 19th, 2020 (rain dates 19th & 20th) \$90 for 2 days of training! 10 spots available.

Invasive Plants Workshop—June 3rd, 9:30-2:30PM, \$20/person, continuing education credits available.

Law Farm Volunteer Workday—June 6th, 9AM-12PM. RSVP to join us!

Teen Wilderness Expedition—July 21st-23rd, Medawisla Lodge. Full, taking wait list—info@piscataquisswcd.org

Rotational Grazing with Wendy Russell of Widdershins Farm—June 24, 9:30-12PM, \$35

Clean Water, Brews & You—July 25th, 4-8PM, Bissell Brothers Three Rivers. Come and support PCSWCD!

Families in the Outdoors: Camp Out! Postponed to Summer 2021

Wild Edible Foraging Workshop with Tom Seymour—August 15th, 9-12PM, Demonstration Forest, \$20. Spaces limited!

Demonstration Forest Volunteer Workday—September 13th, 9AM-12PM. RSVP to join us!

Carbon Conservation: The Forest's Role in Sequestering Carbon—October 4th, 1-4pm, Law Farm. Registration and Details coming soon!

Cider Pressing with East Sangerville Grange—October 18th, 11-1PM, ESG, RSVP to join us!

Event Registration at www.piscataquisswcd.org—Just click on the Events, Programs & Services tab!

All event, program or service inquiries can be directed to info@piscataquisswcd.org!

WELCOMING NEW FRIENDS TO THE LAW FARM!

Have you heard the news? The Piscataquis County Soil and Water Conservation District will be working with Widdershins Farm of Dover-Foxcroft and welcoming livestock at the Law Farm on June 6th! June 6th is our Law Farm Volunteer Work Day, the perfect day to welcome the livestock! The animals will be there to help clear and manage land, reduce fuel costs and continue our ongoing permaculture work. They will be part of an ongoing management plan we have for the Law Farm and will provide a learning opportunity for the public. In fact, we will utilize this opportunity in every way—from building new partners with local farmers, to sustainably clearing land in a low-impact way, to providing an educational offering. Our District will work with Wendy Russell of Widdershins Farm and she will present a Rotational Grazing Workshop on June 24th from 9:30-12PM. You can register online at www.piscataquisswcd.org!

When visiting the Law Farm while the animals are working there, we ask that you leave your dogs at home. There will be no dogs allowed at the Law Farm while the livestock are there. Also, please do not feed them. Keep in mind that the fencing used to contain the animals is electrified, so please avoid going near it. Observe and enjoy the animals from a safe, respectful distance.

We look forward to working with Widdershins Farm and learning with you all about rotational grazing!



MAINE BIRD ATLAS 2018-2022: A CITIZEN SCIENCE OPPORTUNITY FROM MAINE IF&W

We first reported on this program in 2019. It is administered by the Maine Inland Fisheries & Wildlife and is an exciting citizen science opportunity for all. This program started in 2018, will conclude in 2022 and was last completed in 1983. This program aims to “*map the distribution, and often abundance, of species over a large geographic area for a fixed amount of time.*” (cited from *Maine IF&W website*) Strong bird populations are directly related to the overall health of our natural areas. The more species diversity and abundance you see, the healthier the ecosystem.

The Piscataquis County Soil and Water Conservation District first learned about this exciting program when working with Maine IF&W Wildlife Biologist, Sarah Spencer, at our *Families in the Outdoors Program: Snowshoe Adventure*. She noted that public lands, such as the Law Farm and our Demonstration Forest, are excellent places to collect data for the Maine Bird Atlas study. Folks can get involved by reporting information and sightings [here](#) and collect sightings data from public lands, large local areas (with landowner permission) or even the woods and surrounding area of your own home! The Maine Inland Fisheries and Wildlife says “*not an expert birder? Not a problem! Every sighting counts! Anyone with an interest in birds, nature, or outdoor recreation can use this as an opportunity to learn about birds and be involved in a critically important conservation project.*” (cited from *Maine IF&W website*)

<https://www.maine.gov/ifw/fish-wildlife/maine-bird-atlas/about.html> .





IMPACTS

89% of Maine is forested and at risk of damage from invasive forest pests

\$8.5B was generated in 2018 by the Maine forest industry



Invasive forest pests jeopardize over **33,500 jobs** in Maine and threaten our **iconic woods and waters**

What **YOU** can do to help:

DON'T LET INVASIVES INTO MAINE



Use local firewood - don't help them move



Use native plants



Prune trees during the winter



Check trees regularly for signs of pests and diseases



Report signs of invasive pests to bugwatch@maine.gov



POLLINATOR WEEK: JUNE 20-28TH, 2020

Ways to Get Involved!

Let's celebrate Pollinator Week together! Perhaps you know that native pollinators need our help. They are looking for food sources, shelter and water sources, all uncontaminated by pesticides and herbicides, so they can flourish. We need them to flourish as we depend on them for food and shelter for ourselves. Last year, we worked with campers from the PRYMCA's Camp Katahdin and planted our Sunflower Pollinator Garden in late June. This garden was filled with native pollinators come August—you couldn't walk by it without hearing the buzz of bees or seeing delicate butterflies flying from bloom to bloom! We also observed signs of local wildlife snacking on sunflower seeds and doing their part to pollinate. So what are some really fun and important things *you* can do to help pollinators?

Plant Flowers!



Choose native plants when possible—there are lots to choose from in our Tree & Plant Sale! Also, plant a variety of bloom colors and choose plants that bloom at varying times of the season, ensuring there is a food source throughout the season. Early-blooming varieties of plants are VERY important to plant, as bees emerge early and will be looking for those blooms. Also, do not treat your flower garden with any pesticides or herbicides—these kill native pollinators. Sample of flowers to plant: EARLY---White Yarrow, White flowers great for bouquets and beneficial insects, Blooms: June-Aug; MID-SEASON---Wild Bergamot, Attracts bees and butterflies, Blooms: July-Aug; LATE SEASON--Blue-Stemmed Goldenrod, Great late season food for honeybees. BLOOM: Sept-Oct.



Build a Bird House & Clean Out Existing Boxes!

Bird houses are easy and inexpensive to build! Here are some great plans for building your own: <https://nestwatch.org/learn/all-about-birdhouses/> or check out the next page for a print out design! If you don't want to build your own, you can purchase them from PCSWCD. Also, don't forget to clean out existing boxes! This helps to control the spread of disease. Birds are excellent pollinators, believe it or not!

Build a Bee Condo!

Check out these really neat and simple Bee Condo designs: <https://www.pollinator.org/pollinator.org/assets/generalFiles/Build-a-Bee-Condo-2020.pdf> Take some time and check out all the great resources from www.pollinator.org—there are tons of games, activities, print outs and they are all very well done.



Start A Food Journal!

Log everything you eat in a weekend—your peanut butter & jelly sandwich, that bag of chips, your fruit salad and if you are lucky, chocolate cake! Would you have enjoyed these foods without pollinators? It really puts it in perspective.

More Fun Resources to Enjoy & Celebrate Pollinator Week:

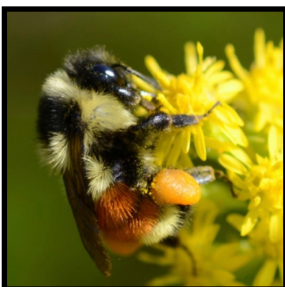
<https://www.pollinator.org/pollinators>

<https://www.xerces.org/pollinator-conservation>

<https://extension.umaine.edu/gardening/manual/plants-pollinator-gardens/>

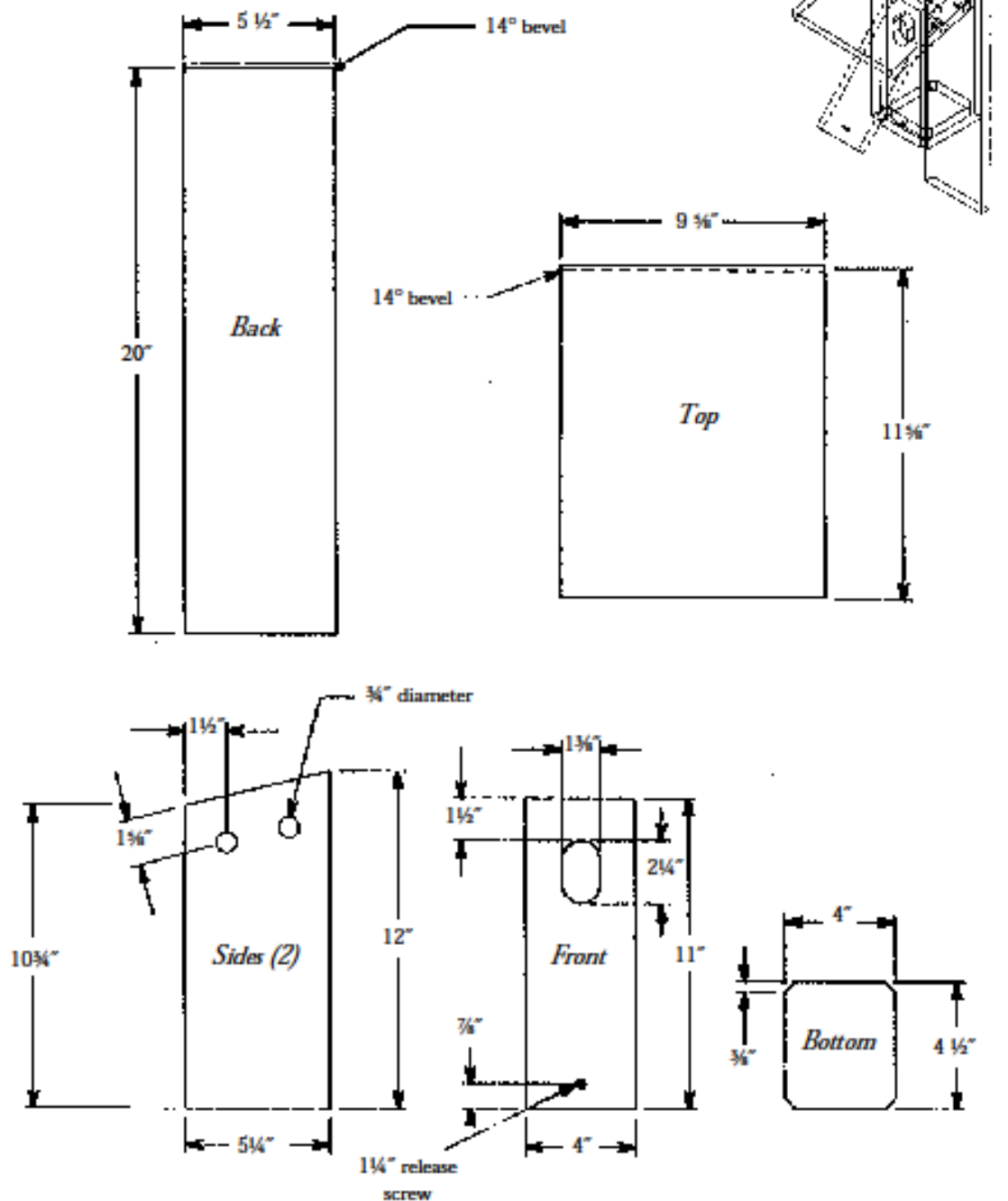
<https://mainebumblebeeatlas.umf.maine.edu/>

<https://www.maineaudubon.org/projects/plants/>



A Nest-Box Plan for Cavity-Nesting Songbirds

(flycatchers, swallows, titmice, chickadees, nuthatches, wrens, and bluebirds)



All wood in the design is 3/4" actual thickness. The pictured entrance hole is recommended for bluebirds. To adapt the nest box for individual species, change the dimensions of the entrance hole. Visit <<http://birds.cornell.edu/birdhouse>> for guidelines on entrance hole sizes.

Printed with permission from the New York State Bluebird Society (Herm Bressler modified nest box)

CARBON CONVERSATION COMING IN OCTOBER

Carbon sequestration. What does this term mean and how is it applied when thinking about managing your land? There is a lot of talk about carbon—credits, storage, farming...what does it all mean? With all the questions circulating in Piscataquis County and around Maine, we decided to do a little digging.

When talking about carbon relating to agriculture, much of the conversation is centered around no-till farming and soil health. This is because carbon is stored in the soil and the more organic matter the soil has, the more carbon is stored. In Maine and especially Piscataquis County, our forested lands are our more prevalent and arguably our most valuable natural resource. So, how does carbon sequestration apply to our forested lands? From this question, we reached out to a number of our partners—MOFGA's Low Impact Forestry program, the Maine Forest Service and our friends at Somerset County Soil and Water Conservation District—to put together an educational program to help address this question.

On October 4th, 2020 at the Law Farm from 1-4PM, the Piscataquis County Soil and Water Conservation District will be working with the above partners to present the program *Carbon Conversation: Our Forests Role in Sequestering Carbon*. Presenters will discuss carbon sequestration—what is it, how does it relate to forestry and how is carbon measured in our forests? Presenters will lead discussions and demonstrations to help participants understand these complex concepts. *Carbon Conversation* will conclude with shared concepts of how carbon sequestration can be applied when working to manage your land.

We will open registration soon for this great program—stay tuned and see you in October!

CHAINSAW SAFETY FOR WOMEN: BUILDING ON THIS EXCEPTIONAL OFFERING

We started working with Maine Forest Ranger, Sam Heffner, and chainsaw enthusiast Pamela Wells in 2018, offering our very first chainsaw safety workshop. Since then, we have held 4 packed courses and have been able to offer both Level 1 and Level 2 training. We can't say enough about our presenter Sam, he has a way of teaching that is clear, supportive and thorough—just ask anyone who has taken our workshops! Pam has been a gift as well and offers wonderful support and expertise.

Our goal is to keep this offer going as we have seen a huge demand for this program. After year 1, we had enough graduates to offer level 2 and it was a great success. This year, we thought would we try to offer a comprehensive offering—level 1 and 2 back to back. Our 2020 Chainsaw Safety Workshop is designed for women-only and will be September 18th & 19th (weather date Sept. 20th). We will hold this workshop at the Law Farm as it offers an exceptional venue for this course—plenty of parking, a large work table and trees needing to be felled and processed!

Overview of Chainsaw Safety for Women:

Day 1, Sept. 18th, Level 1—Sam Heffner will present on Personal Protective Equipment (PPE), saw maintenance and operation, starting and basic cuts. Most of the day will be hands-on and participants will need a chainsaw to work with and are encouraged to bring chaps, eye, ear and head protection, gloves and sturdy boots. Borrowed chainsaws are perfectly fine to use and it's good to bring PPE that you have, so that you can review your gear as Sam and Pam go over what you need to have and look for.

Day 2, Sept. 19th, Level 2—We will head to the woods and work through several cutting exercises and situations. Sam will demonstrate how to work through felling, hang ups, spring poles and several other situations. Proper PPE in good condition will be required to be worn for this day. The PCSWCD can help participants locate the proper PPE and also has helmets and ear protect available to borrow and use.

Registration is open and limited to 10 participants! We are able to offer this course for \$90, which is significantly less than what you will see around the state. Register here: <http://www.piscataquisswcd.org/event/chainsaw-safety-level-2/>

OUR VOLUNTEERS: *Read About the People who Help the PCSWCD!*

The Piscataquis County Soil and Water Conservation District operates with a small, part-time staff and the work our staff does is overseen by a Board of Supervisors. Our Board is comprised of a diverse cross-section of individuals who work and reside in Piscataquis County and offer a variety of expertise. We have individuals who have served for a number of years and we are so grateful for their dedication. At the end of 2019 and in 2020, we have been fortunate to welcome 3 new Board members! Here they are and a bit about them. We are so grateful to them and all of our Board for overseeing our vital work!



Mike Pouch, Associate Supervisor. Mike comes with an extensive background in forestry education from the University of Maine, with a masters of forestry and is a licensed forester who is currently the Resource Manager of Baxter State Park. Mike has worked on past projects with New England Forestry Foundation (NEFF), Penobscot Experimental Forest, US Forest Service, Maine Mountain Collaborative, Acadian Forest Ecosystem Research Project (AFERP) and so much more.



Emily Dickison, Associate Supervisor. Emily joined the Board as a Junior Representative in 2015 while studying Wildlife Biology and Forestry at Unity College. She is extremely grateful for the opportunity to work alongside staff to promote the conservation of our natural resources through educational efforts. She and her husband have recently moved to this county from Aroostook and Penobscot County and are excited about getting involved in the surrounding community.



Sue Mackey Andrews, Supervisor. Sue moved to this region in 1979 because of its close and caring communities, its vast outdoor treasures and the opportunity to raise her children here. Sue brings her interests and skills in organizational strength through diversity to the District, as well as her passion for involving youth in authentic ways to appreciate and protect the value of our region and the importance of preserving our environment. She and her husband Fred love living on Sebec Lake year-round.



THANK YOU FROM PCSWCD!

Our parking lot at the Law Farm is plowed by Dan Rosebush. Dan donates his time and effort to our District. This allows for opportunities to enjoy the Law Farm year-round and for our District to offer winter events!

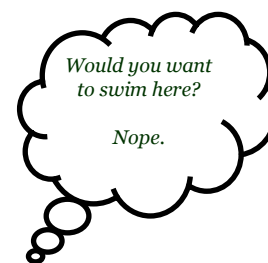
Thank you Dan!

WRITE A DIFFERENT STORY FOR YOUR LAKE OR POND

A Maine Summer. Is there anything sweeter? Summer for many Mainers and visitors to our beautiful state are spent taking in the natural beauty and abundance of our beloved local lakes, ponds and rivers. It's hard to look out over the sparkling water and think the sight isn't a dream, isn't endless. In Maine, we are fortunate to have over 5,785 lakes and ponds that offer seasonal pleasures such as swimming, boating, fishing, wildlife watching and much more. Of these 5,785 lakes and ponds, not all are as pristine as we want to believe they are. That's where we, the people of Maine and visitors to Maine, need to act and take simple measures to ensure Maine's lakes and ponds, and that heavenly view over the sparkling water, is secured well into the future.

Soil erosion is the biggest enemy to our lakes and ponds. Soil running into our waterbodies causes an increase in levels of phosphorus and nitrogen in the sediment. When loads of these nutrients are in high concentration, the result is algae growth, then algae blooms. Algae blooms deplete available oxygen in the water, resulting in decreased populations of aquatic organisms, our historic fisheries.

This is the reality of an algae bloom: Two pictures, one clear water, one in bloom:



Let us tell you the story of East Pond. East Pond has bloomed for decades and in 2018, it received an in-lake alum treatment which restored its former benefits and beauty. The project required 4 years of focused preparation and research. **It cost \$1,174,000.** These efforts purchased approximately 20 years of clear water. Absent strenuous nonpoint source pollution (soil erosion) repair activity in its watershed, East Pond will need another treatment sometime around 2038.

The story of East Pond has a *temporary* happy ending. Twenty years from now, residents of East Pond and supporters will have to raise another 1.2 million to continue water clarity into the future. ***The story of East Pond does not have to be the story of your beloved lake or pond.***

Waterfront residents can address soil erosion issues that occur on their property, often with simple, do-it-yourself solutions. The Piscataquis County Soil and Water Conservation District participates in and offers the program **LakeSmart** to all Piscataquis County waterfront property owners. ***This free, voluntary program is designed to evaluate waterfront homes, assess the amount of erosion occurring on the property, and provide owners with clear, low-cost solutions to stop soil erosion, "zip-up" your shoreline and directly influence the health of your lake.***

Do you want to protect your lake or pond?

Contact the PCSWCD

207-564-2321 ext. 3, katherine.weber@piscataquisswcd.org
and set up a FREE, no obligation, **LakeSmart** evaluation!

Take a step to write a different story for your lake or pond!



RESOURCES & IDEAS, FOR YOU!

The purpose of this resource list is to help you find constructive, enjoyable, nature-based activities that can be done with children and/or adults...close to home!



Soil:

Early spring is a great time to explore soil health. Did you know you can do a simple “shovel test” to determine the health of your soil? It’s easy—take a shovel and dig out a deep chunk of your garden soil. **Soil Health Observations:** Healthy soil is a live—do you see bugs and worms? Is your soil dark and somewhat crumbly? What does it smell like? Is it moist? Make a list of your observations. **Soil Health Solutions:** If it is hard and compacted, try adding organic matter—peat moss, compost—and leave the soil undisturbed (no tilling!) and don’t drive or walk over it. Healthy soil is full of air and is loose and moist in texture! The more organic matter your soil has, the better it will hold moisture and air, promoting increased microbe activity. The more microbes, the more available nitrogen for your plants—plant food! Dig, experiment, record, enjoy!

Web Soil Survey: Play around with this useful, free online tool! Find your home, map your soils and learn about them! <https://websoilsurvey.sc.egov.usda.gov/App/WebSoilSurvey.aspx>

Forestry:

Take a look at this online catalog of native Maine trees: https://www.maine.gov/dacf/mfs/publications/handbooks_guides/forest_trees/individual_spp_index.html. Grab your phone or better yet, your copy of Forest Trees of Maine, and take a walk in the backyard. **See if you can ID the tree species growing on your property using these resources.** Take notes on what you find and their overall health—do you see signs of disease? Dead wood? Insect damage? Take notes and create an inventory of your woods! **Kids can easily get involved with this**—even the youngest kiddos can make observations about trees—colors, textures and more!

Agriculture:

Plan your 2020 garden! Maybe it’s a few container gardens or a large garden—**draw up a garden plan! Get the kids involved—let them draw their own garden plan and better yet, give them a small area of the garden and let them plant their ideas.** Do some research—what plants are “companion plants” or do well next to each other? What structures can you build to help maximize space? Get creative!

Start composting at home! <https://www.bhg.com/gardening/yard/compost/how-to-compost/>

Support our local farms! **Check out this farm directory from UMaine Cooperative Extension:** <https://extension.umaine.edu/agriculture/farm-product-and-pickup-directory/?fbclid=IwAR17aFPCQGmcSqzGr-8CEYohDBEErAnd-J5v7Tv2SozqoKDF81giHbfqmw>

Fisheries & Wildlife:

Go for a walk and collect items from nature as you go. Bring them home and **build a habitat!** Grab a Maine wildlife book or hop online and do some research on Maine wildlife. See if you can figure out what animal(s) might be best suited for your habitat and why. Snap a picture and email it to info@piscataquisswed.org. We want to see your creations!

Watersheds:

A watershed, put simply, is an area of land that drains to a common body of water. One of the coolest things about watersheds is, we all have the power to protect and improve them, because, well, we all live in one! So here is our idea: **take a walk around your property and plan out your watershed protection plan!** Is there litter that can be picked up? Erosion occurring on the property? Remember, erosion is the number one source of non-point source pollution and a huge contributor to water quality issues. Correct that erosion by planting grass or other plants to help stabilize the soil. Make a plan to stop using chemical fertilizers, pesticides and herbicides on your property—they end up in our water resources! What could you use instead? What additional positive impacts do you foresee happening when you stop using these products?



VOLUNTEER!

WWW.PISCATAQUISSWCD.ORG/VOLUNTEER



JOIN US FOR A
PCSWCD
EVENT,
PROGRAM OR
WORKSHOP!

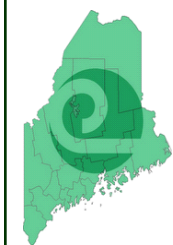
www.piscataquisswcd.org/eventsprograms



VISIT OUR PUBLIC LANDS

WWW.PISCATAQUISSWCD.ORG/THE-LAW-FARM

WWW.PISCATAQUISSWCD.ORG/DEMONSTRATIONFOREST



Phone: (207) 564-2321 ext. 3
E-mail: info@piscataquisswcd.org
Website: www.piscataquisswcd.org

