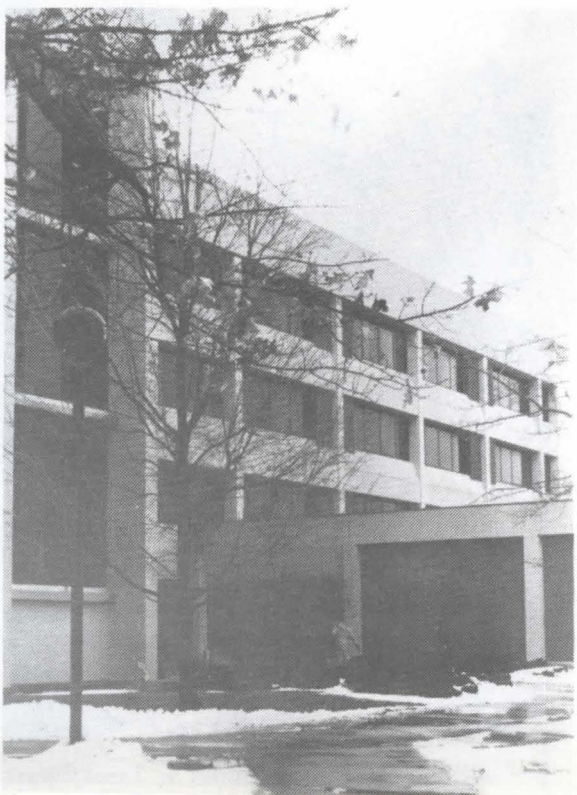


Indiana University at South Bend

Program in Women's Studies

Established in 1979, the program brings together faculty, students, and members of the community concerned with questions relating to gender and roles of women and men in society. Women's studies examines similarities and differences in gender by considering the experience of women and men and the ways of interpreting that experience. This is accomplished through courses which constitute an academic minor, lectures, seminars, and special events.



The Academic Minor In Women's Studies

The Minor in Women's Studies consists of a minimum of 15 credit hours. Six of the fifteen hours are required core courses; these are B250 - An Interdisciplinary Analysis of Women's Roles (3 hours), and W200 - Women in Contemporary Society (3 hours). Core courses should be taken first because they provide a comprehensive background which compliments the more specialized courses. Both B250 and W200 may be counted toward Arts and Sciences Divisional General-Education requirements

Nine more credit hours from the specialized courses complete the 15 hour minor. These courses are called recommended courses, they are taught within departments that have been approved for Women's Studies credit by the Women's Studies Committee. There are two types of such courses: non-variable topic courses and variable topic courses. The non-variable topic courses are always part of the recommended list. The variable topic courses fulfill the requirement for the Minor only when the topic is a Women's Studies area.

Consult your Women's Studies advisor when planning your schedule as new courses are continually being developed and requirements are subject to revision.

Women's Studies Core Courses

B250 - An Interdisciplinary Analysis of Women's Roles

Campus, community, and nationally-recognized speakers introduce students to contemporary issues pertaining to women as well as the ways in which our own society and other societies define women. Films and videotapes address cross-cultural and historical dimensions of women's roles.

W200 - Women in Contemporary Society

The changing roles and images of women in contemporary society are explored through reading, seminar discussions, and films. Focus is placed on the idea of the "feminine" shaped and mirrored in contemporary fiction and popular culture. The course examines the notion of "feminine" within academic disciplines such as history, psychology, religion, literature, and sociology. Skills in reading, writing, test-taking and oral presentations are stressed.



Recommended Courses in Women's Studies

Nonvariable Topic Courses

- P460 Women: A Psychological Perspective
- P331 Psychology of Aging
- S310 Sociology of Women
- S420 Cultural Dimensions of Child Abuse
- S316 Sociology of the Family
- S336 Topics in Communication
- F340 Kinship Organization
- N200 Biology of Women
- F266 Women in French Literature
- L450/
L625 "Shakespeare's Women"
- L207 Women and Literature
- A270/
A490 Women in the History of Art

(Only one of the following courses may be included in the nine hours of recommended courses for the Women's Studies Minor)

- P495 Human Sexuality
- S164 Marital Relations and Sexuality
- K380 Human Sexuality-Health Professional

Variable Topic Courses

- L102 Freshman Literature II: Women in Literature
- H225/
H425 Topics in History: History of American Women
- T483 Topics in Theatre & Drama: Contemporary Plays By and About Women
- L649 Contemporary British Fiction (applicable only when focus is on Women's Studies area)
- V450/
V550 SPEA Topics: Women in Public Affairs
- W300 Images of the Woman Scientist

Course descriptions for the recommended courses may be found in the IUSB Bulletin under the entry for the department which offers the course.

Additional recommended courses may also be available through the Northern Indiana Consortium for Education. Check with your Women's Studies Advisor for information about Consortium offerings.

Women's Studies Students — Persons Interested In Women's Studies

Name _____ Student ID # _____-_____-_____

Home Address _____
Street City State Zip Code

Home Telephone Number (_____) _____-_____

Are you now enrolled at IUSB _____ as a part-time _____ or full-time _____ student?

Are you a re-entering student? _____ If enrolled in a Women's Studies course, is this your first course in Women's Studies? _____

Are you interested in a Women's Studies minor? _____ yes _____ no _____ perhaps

If you want to declare a Women's Studies minor, please check "yes" and sign your name.

_____ yes

Signature _____

If you are not currently enrolled at IUSB, are you interested in

_____ Enrolling in or auditing Women's Studies Courses at IUSB?

_____ Activities and special events sponsored by Women's Studies?

Comments:

Please return this form to Dr. Patricia McNeal, Director of Women's Studies, Indiana University at South Bend, Northside 203, 1700 Mishawaka Avenue, Box 7111, South Bend, Indiana 46634

Faculty Involved in Research and Curriculum Development

Professors

Gloria Kaufman, English
Marcia Sheridan, Education

Associate Professors

Eileen Bender, English
Ernest Brandewie, Anthropology/Sociology
Linda Fritschner, Sociology
Brenda Knowles, Business & Economics
Mary Kunzer, Nursing
Donald B. Marti, History
John McIntosh, Psychology
Thomas Miller, Communication Arts
Anne-Marie Poinatte, Foreign Languages
Margaret Scanlan, English
Sandra Winicur, Biology

Assistant Professors

Linda Blodgett, Business and Economics
Cynthia Haggard, Education
Susan Hood, Fine Arts
Frances Sherwood, English
Nancy Yokom, Dental Auxiliary Education

Adjunct Professors

Abbe Dallek, Sociology
Suzanne Miller, Communication Arts
Elizabeth Mooney, Sociology and Psychology
Judy Newton, Political Science
Nancy O'Neill, Sociology

The Women's Studies Program

Women's Studies is a **program**; this means that faculty who teach women's studies courses come from many departments and many academic disciplines. Thus, we speak of Women's Studies as an **interdisciplinary program**. In Women's Studies, the central focus of the disciplines is on gender. In the last twenty years, scholarship has challenged our understanding of the sexes — many assumptions about gender similarities and differences may no longer be valid.

This scholarly challenge came from many disciplines. It arose from three broad categories of academic disciplines: the **humanities** (including history, languages, and philosophy), the **social sciences** (including sociology, anthropology, and psychology), and

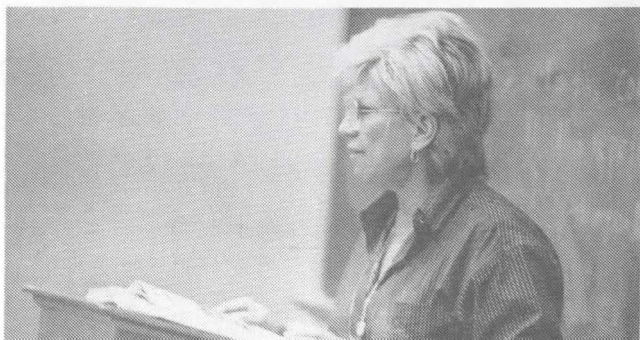
the **biological sciences**. Some of the questions scholars asked were:

- What parts do culture and biology play in the development of gender identity?
- What are the similarities and differences between the roles of women in our own culture and those in other cultures?
- Do women and men create literature and works of art differently?
- Is the moral reasoning of men and women different or similar?
- Are sex roles in our culture more flexible or more restrictive than they were in the past?

Women's Studies at Indiana University at South Bend arose because faculty at Indiana University have three responsibilities to the campus and larger community: These are **teaching, research, and service**. New teaching methods, the opportunity to work with scholars in other disciplines, and increasing numbers of women students encouraged the founding faculty. As the program grew, it became clear that students benefited from examining the **methodology** (ways of acquiring and assessing information) of a number of disciplines rather than a single discipline. Academic skills such as writing, speaking, and test-taking served students both in their college careers and their professional lives. Women and men found that Women's Studies courses fostered both personal and interpersonal development.

Women's Studies Activities

Each year, the Women's Studies Committee sponsors four Faculty-Staff Seminars to encourage interdisciplinary discourse and cross-disciplinary interaction. Nationally-recognized scholars are brought to Indiana University at South Bend under co-sponsorship of the Program. Two recent scholars have been Estella Lauter and Mary Jo Weaver. In addition to these academics, speakers from many fields and professions active at international, national, and local levels are brought into the B250 classroom. The B250 lectures presented by these speakers are open to the community.



Women's Studies sponsors a "Susan B. Anthony Day" celebration and an annual "Tribute to Women" dinner. Women's Studies presents an annual award to the IUSB faculty or staff member who has done the most to promote women. Academic excellence is encouraged through the annual Women's Studies Essay Contest.

To encourage Women's Studies Students to participate in activities at the national level, the program offers scholarships to students to attend national conferences in Women's Studies.

Women's Studies Affiliations

Indiana University at South Bend serves as coordinator for the local Women's Studies Consortium which includes faculty from Goshen College, The University of Notre Dame, and St. Mary's College. The institution maintains memberships in the National Women's Studies Association, the Midwest Women's Studies Association, and the Indiana consortium for programs in Women's Studies.

For more information about Women's Studies at Indiana University at South Bend, please contact:

Dr. Patricia McNeal, Director
Women's Studies

Indiana University at South Bend
Northside 203, 1700 Mishawaka Avenue
Box 7111

South Bend, Indiana 46634
(219) 237-4308

Indiana University is an Affirmative Action —
Equal Opportunity Employer