

GOES-10 Lab

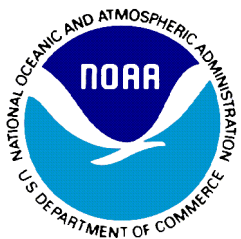
Day 4

T. Schmit

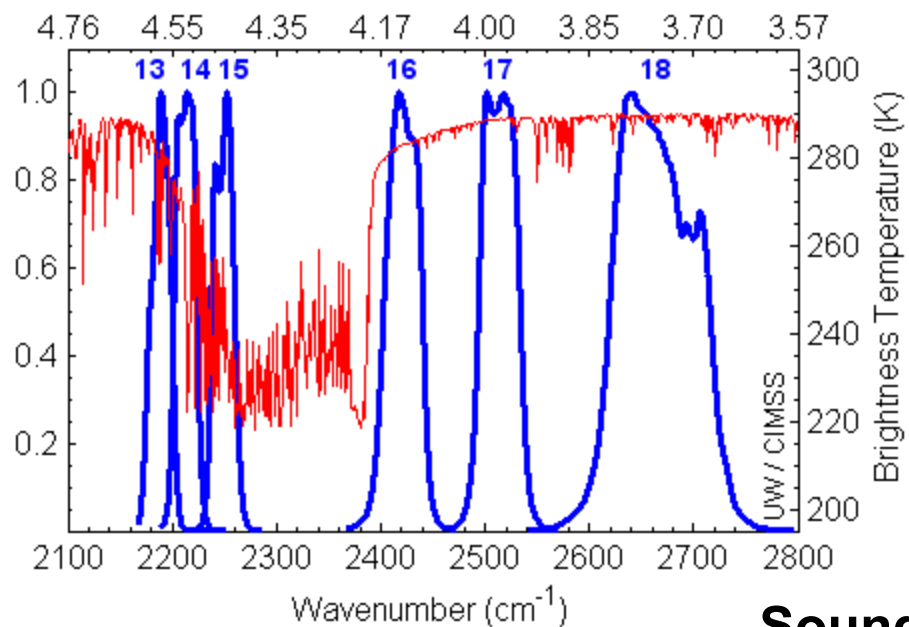
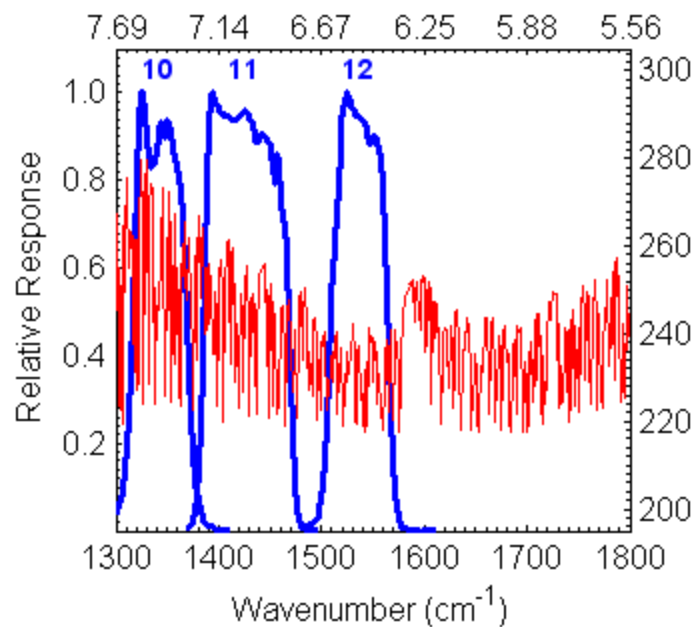
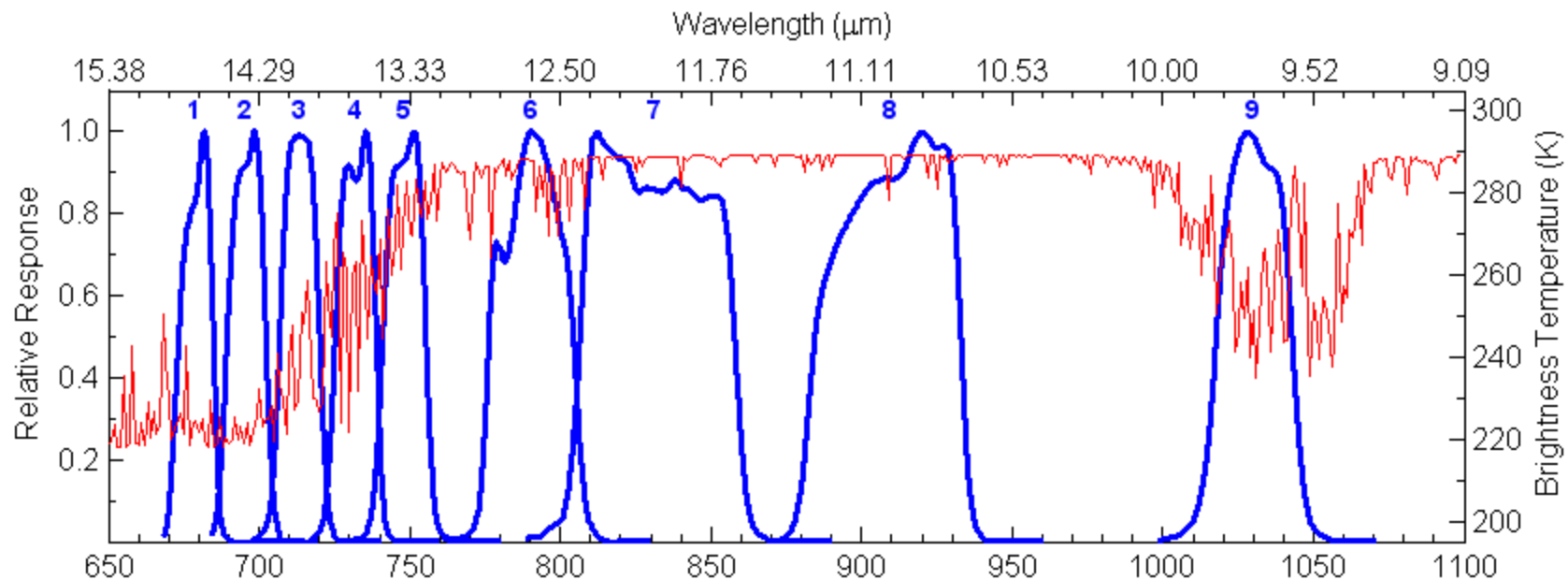
G. Wade

NOAA/NESDIS

Each group could save an image or two, or comment on something in an existing loop!

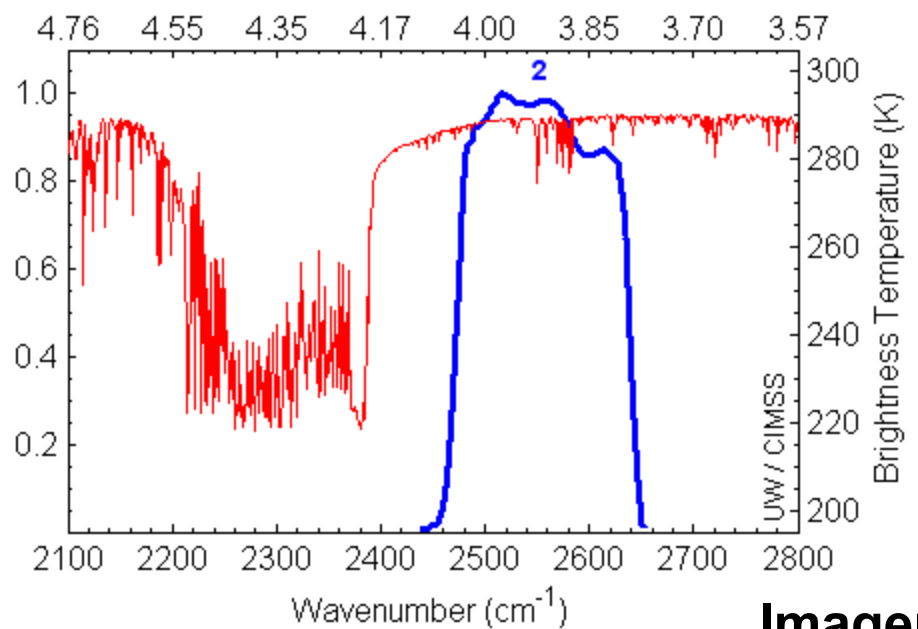
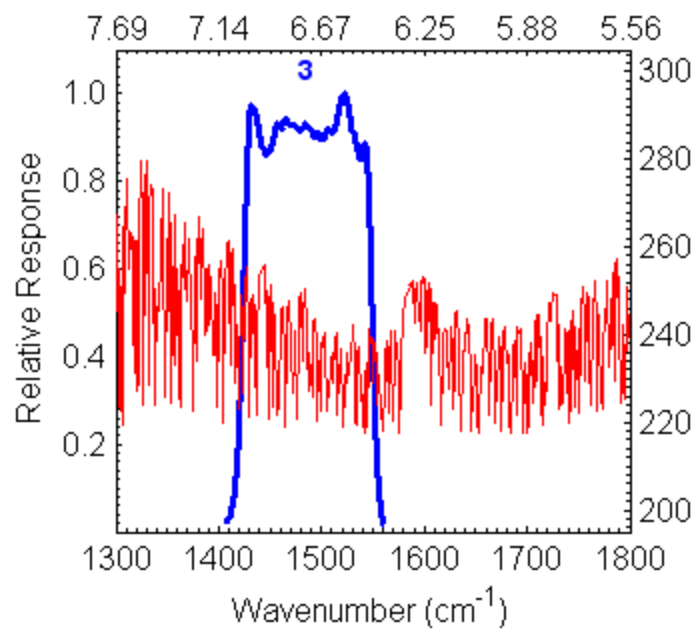
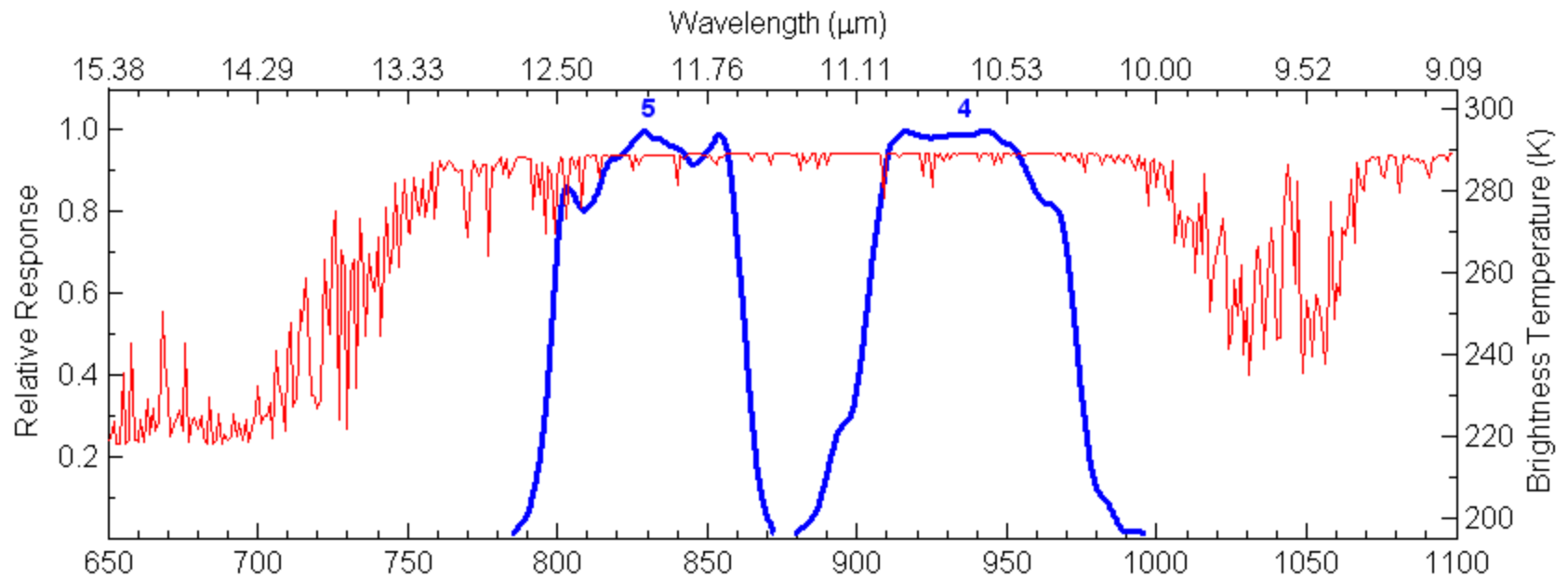


GOES-10 Sounder SRFs & US Std Atms Brightness Temperature Spectrum



Sounder

GOES-10 Imager SRFs & US Std Atms Brightness Temperature Spectrum



Imager

Day 4 Lab (Part I)

- Investigate the 5 band GOES Imager for the 20-Oct-07 case
- Use HYDRA **(C:/DATA/Lab3)**
 - File/new
 - Load/local data
 - **Imager AREA2000**
 - **Sounder AREA2019 from yesterday)**

FYI: http://cimss.ssec.wisc.edu/model/realtime/cras48_SA/daily.html

Day 4 Lab (Part II)

- Look at pre-loaded Sounder/Imager imager and products using Firefox
- Large-scale
 - GOES-10 Case study

Finer-scale views:

- GOES-10 over South America
- GOES-10 DPI over South America
- Use bookmarks !

Day 4 Lab (Part III)

- Use HYDRA and the linear combinations tool with the GOES-10 Sounder data to simulate a stability product (LI or Total-Totals).
- $TT = (T850 - TD850) + (T850 - T500)$
- $TTI = (S8 - S7) + (S6 - S3) \text{ ??????????????????}$