

COLONIAL WILLIAMSBURG NEWS

Volume 21, Number 10

Williamsburg, Virginia

December 19, 1967

CW Santas In Over 25 Departments Are Filling Yule Baskets

Over twenty-five CW departments with some 750 employees are playing Santa Claus this year. Busily gathering clothes, toys and staple foods, they are making Christmas brighter for needy families with young children, and elderly persons and disabled individuals through the Yule Basket Program, an annual project of the Williamsburg Community Council.

The Yule Basket program at CW was coordinated through the Personnel Relations office which kept in touch with Miss Martha Barksdale, chairman of the community-wide project. Some departments, such as Landscape and the Hostess Corps, adopted large families. Others, including Personnel Relations, Architecture, AARFAC, and Audiovisual, took small families. In addition, some departments, like Upholstery at the Inn, Lodge House-keeping, Merchandising and Archaeology, filled baskets full with food staples for the Council to distribute at its discretion.

CWers from some of the many participating departments are pictured on this page as photographers Jane Iseley and Chuck Kagey snapped them at work on their baskets last week. On December 23, volunteers from the Community Council will take the CW baskets along with baskets prepared by other organizations and individuals throughout the Williamsburg area to those in the community who might otherwise have had a cheerless Christmas.



EVERYTHING FROM SOUP TO CHILDRENS' BOOKS GOES INTO THE YULE BASKET FROM INFORMATION CENTER DESK.



ARCHAEOLOGY IS FILLING THEIR YULE BASKET WITH SUGGESTED STAPLE FOODS FOR A SMALL FAMILY.



HOSTESS CORPS ADOPTED TWO FAMILIES WITH A COMBINED TOTAL OF SIXTEEN PERSONS.



CWERS IN HOTEL SALES FILLED THREE HOLIDAY BOXES WITH CLOTHES, STOCKINGS FILLED WITH CANDY, AND STAPLE FOODS.



MO&M AND CONSTRUCTION SET THE HOLIDAY MOOD BY DECORATING THEIR YULE BOX WITH CHRISTMAS PAPER.



EVERYBODY FROM LODGE HOUSE-KEEPING BROUGHT SOMETHING FROM HOME.



CWERS FROM INN UPHOLSTERY SHOP ADD MORE ITEMS EVERYDAY TO YULE BASKET.

**CRAFT SHOPS - Helen Vandermark**

DAVE LEE recently vacationed in Florida and ROY BROWN enjoyed a week of hunting. Goodbye to John Mooney and Betty Marsh who have left our department and welcome to JOHN CARY, interpreter in the Bake Shop, and BARBARA GONZALES who is helping us out during the busy Christmas season.

We wish a speedy recovery to WILLIE SPRINGS who is in the hospital. Our thoughts are with JULIA ALLGOOD and WINK CRITTENDON whose mother is extremely ill.

MOTOR HOUSE HOUSEKEEPERS - Mildred Webb

CARRIE SWEENEY had as her guests her son, Herman, and granddaughter from Hagerstown, Md. HORTENSE KING and family spent the week in Ashville, N. C., visiting Mrs. Louis England. GRACE HYLEMON spent a recent weekend in Ashville, N. C., visiting her parents, Mr. and Mrs. Samuel Rathburn. Grace also visited her son, Brooks, at V.P.I. in Blacksburg. NANCY PETERSON and daughter enjoyed a three-day theatre tour to New York and while there they visited Radio City Music Hall, Greenwich Village, Chinatown and saw several wonderful plays.

PHYLLIS JONES moved into her new home November 18th. LELIA COX spent several days in Philadelphia visiting her sister. Lelia had as her Thanksgiving guests her daughter from Roanoke, her son from Dayton, Ohio, and her son from Richmond.

We are glad to report that MABEL SCORE is back home and that DOROTHY CLARK has returned to work after being in Community Hospital.

PRESENTATION - Eugenia Corrigan

ED SPENCER has returned from vacation. We understand he could be found on the Golden Horseshoe Golf Course during the daylight hours.

COMMISSARY - Hazel Majette

Those who are enjoying vacations are JIM RUSSELL, EDGAR WHITE, JOHN MORMAN, MARTIN KRZOK, GEORGE DALES, ALBERT DUNLAP and FORREST GRIFFIN.

We wish a speedy recovery for JOHN BROCKENBERRY and WILLIAM BROWN.

FRANKLIN HOUSE - Editor

Our sympathy goes to CLARENCE HOBBS who lost his sister on December 7.

ARCHITECTURE - Dru Warr

We are pleased to report that ERNIE FRANK is now at home and is doing well.

CATHY SAVEDGE spent the Thanksgiving weekend in New York City and reported she was glad to return to the "quiet Virginia countryside." JOE JENKINS has just returned from a trip to New York City to attend a committee meeting of the National Fire Prevention Association.

JIMMY KNIGHT reaches his 30th anniversary with CW on December 16th and will retire at the end of the month. We will miss seeing Jimmy 'round and about.

MOTOR HOUSE FRONT OFFICE - Evelyn Owen

We all miss FRANCES CHAPMAN who has transferred to the Reservation Office. We also miss our witty, gay ANN ABBITT who is working only part-time now.

Welcome to our two new clerks, RUBY ALBERT and MARTHA HINKLE. Get well wishes go to BARBARA RILEE who is out sick.

Your reporter is happy to be back, well and strong again.

MERCHANDISING - Lillian Babb

Congratulations to the SOROKIN family on the newest feminine arrival. ANNE COLES has moved into her new home, the Bryan Kitchen.

Our best wishes go with Sgt. Talmadge Alphin, son of SALLIE and "T" ALPHIN, who has left our country for service in Asia. Special Christmas employees at Craft House are ROSE BARBER, GENE CAMPBELL, NANCY GERAGI and LISA KEEHEN. A warm welcome to JEAN RHODES, a new employee at the Inn Gift Shop.

CAROLINE COCHRAN will spend Christmas with her sister, Mrs. James Cox, in Ashland, Va. Peggy Barker and daughter Lisa will be guests of RUTH CODDINGTON for the holidays. The Barkers are from Long Hope, Calif. BILL MURPHY will entertain his family from Atlanta, Ga., and

Florida for the holidays.

Your reporter will have her sisters, Ann Oakes from Washington, D. C., Rosalie Oakes from Durban, South Africa, and her eldest son, Drew, a senior at the University of Missouri, for the holidays.

AUDIOVISUAL - Connie Niver

All sorts of weird sounds keep the department anything but peaceful and serene. The reason for the sudden outbursts of jumbled-up squeaks and quick scrapes is that the sound track for the basket weaving film is now in progress, plus the record of the concerts given at the Governor's Palace. Believe me there's never a dull moment around here!

MIMEO-ADDRESSOGRAPH-SUPPLY - Anna Richardson

A belated welcome to BOBBY RATCLIFFE, a James Blair student working in the Supply Room with AL DEMBACH. In the Addressograph section, we welcome MARY HUGHES, also a James Blair student. Our department wishes a Happy Christmas and New Year to all our friends.

LODGE HOUSEKEEPING - Lola Larson

MAE SHELTON has returned from her vacation, having spent a few days with her sister in Victoria and with friends in Franklin, Va. Others returning from vacations are HAZEL RUTLEY, VIVIAN NEWBY, MINNIE WRIGHT, LILLIAN FRAZIER and LILLIAN WALLACE. BRYAN WILLIAMS is still out sick.

LOLA MOORE's mother from North Carolina is spending several days here with her.

Our sympathy goes to STANLEY SUTHERLIN who lost his grandmother November 29.

RESERVATION OFFICE - Mary Ann Douglas

The reservation office welcomes FRANCES CHAPMAN, SHIRLEY POPICHAK and SHARON ST. CLAIR to their staff. A welcome goes to MARCELLA MEDEIROS who joins us again after returning from Hawaii.

Congratulations go to Mrs. Robert STONE who was formerly Miss LYNN GRAY.

PHYLLIS FANNIN has just returned from Washington state where she visited her mother. Welcome back to MARY CATHERINE WILSON who has recently returned from the hospital. PAMELA HESTER is back from a week's vacation in Carrollton, Va. We will all miss JUANITA BAIZE who is moving to Michigan. POLLY COTTINGHAM spent Thanksgiving with her son and his family in Richmond.

Our sympathy goes to KENSETT FISHER who recently lost her grandmother.

INN HOUSEKEEPING - Mary Redcross

We welcome SHIRLEY CARY to our department. CHARLINA HARRIS and VIRGINIA LEMONS have returned after having their vacations. MAURICE TABB and IRENE STREET are now on their vacations.

John and MARVILLE WORLEY's son, Jack, is recuperating in Portsmouth Naval Hospital after returning from Vietnam. Get well wishes go to all of our sick. Our sympathy goes to LOUISE CHRISTIAN whose sister died December 11.

PURCHASING & ESTIMATING - Susan Page

Congratulations to Josephine BRUMMER for being appointed registrar for the Bruton Magisterial District.

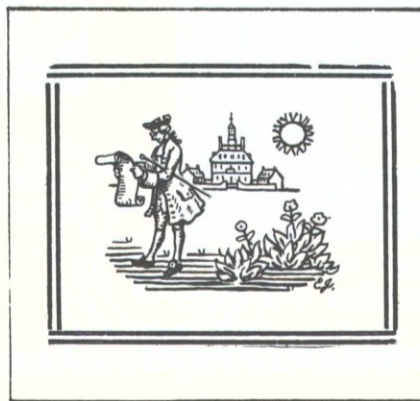
Apparently the exercise and training experienced by Chris REEVE in his work for the Archaeological department at the James Geddy site last summer was effective, for he has just been named to the All-State team from the high schools and prep schools of Delaware.

The PAUL EPLEYS will be spending the week of December 18 in Forest City, N. C., helping his parents celebrate their 50th wedding anniversary.

We all wish RANDY WILSON a speedy recovery from his stay in the hospital.

GROUP VISITS - Editor

We extend our sympathy to LUTHER MITCHELL whose mother died December 10 in Alabama.

**Proud Parents**

Freeman Sutton, apprentice silversmith, a son, Douglas Eugene, born October 10, 1967, 7 lbs., 12 oz.

George B. Edwards, Jr., gardener, a daughter, Elvira M., born October 29, 1967, 8 lbs., 4 oz.

Domon S. Lewis, Lodge dining room captain, a daughter, Deborah Caryn, born November 6, 1967, 5 lbs., 8 oz.

Eugene Crain, master bookbinder, a daughter, Teresa Ann, born December 6, 1967, 5 lbs., 3 oz.

Mildred Layne Celebrates Thirtieth Year With CW

Mildred E. Layne, executive assistant to CW president Carlisle Humelsine, celebrated her thirtieth anniversary of service here on November 29.

Miss Layne joined the CW staff in 1937 as secretary to Ed Kendrew who was then resident architect and director of Architecture and is now senior vice president. Later in 1943 she became administrative assistant to then president Kenneth Chorley. In 1947 she went to the New York office and was also office manager there and in 1958 she was named director of that office, a post she held until the office was deactivated in 1962. Also in 1958 she was elected an assistant secretary of the corporations, an office which she continues to hold. She assumed the newly created position of executive assistant to Mr. Humelsine in 1966.

A native of Virginia, Miss Layne has served on the governing bodies of several Rockefeller organizations in New York. She was a vice president and assistant secretary of Jackson Hole Preserve, Inc., assistant treasurer of the Grand Teton Lodge Company, and assistant secretary of the Caneel Bay Plantation, Inc., and of the American Conservation Association.

Kendrew Retires From State Art Commission

Ed Kendrew, senior vice president of Colonial Williamsburg, is resigning from the State Art Commission, effective December 31.

During the Commission's December 1 meeting Ed, who has been a member of the group since 1945, was presented with a framed farewell tribute signed by the Commission members and Governor Mills E. Godwin, Jr. In addition, Governor Godwin made a special visit to the meeting to express his appreciation for Ed's long service with the Commission.

Margaret Miller, Ed's CW secretary, also received a citation for the fine work she has done for the Commission.

Bonnie Brown Marks 20th Anniversary Here

Bonnie Brown, spinner in the Division of Presentation, will top her twentieth year of service here on December 23.

Bonnie joined CW in 1947 as weaver in the Presentation division and in 1950 she was named to her present position as supervisor of the Spinning and Weaving House.

A native of Montana, Bonnie and her husband, Raymond, have two daughters. She enjoys sewing in her spare time.

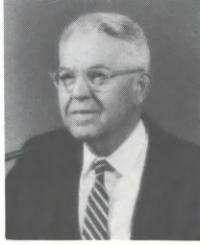
Jimmy Knight Retires After 30 Years Here

James M. Knight, senior draftsman in Landscape Architecture, who marked his thirtieth anniversary of service here on December 16, retires from CW on January 1.

A native of Virginia, Jimmy came to CW as a draftsman in the Architecture department in 1937. Three years later he became archaeological engineer and in 1944 he reached the position of draftsman and archaeological engineer. He was named to his current position in 1965.

In addition to handling archaeological engineering work and drawings, Jimmy directed the field archaeological crews for many years. He has also coordinated historic maps and surveys and his colored maps are displayed in many CW offices.

Jimmy and his wife, Vera, have one daughter. A member of the Archaeological Society of Virginia, he enjoys reading and gardening.



Christmas Greens: Traditions And Origins

Christmas for Americans is a joyous time filled with a vast heritage of age-old customs and festive traditions which have come down to us from many lands and peoples. Mentioned here are a few of those traditions and their legends which deal with the hanging or use of evergreens during the Christmas season.

The well-known custom of kissing under the mistletoe was practiced in eighteenth-century England and the tradition was probably introduced in America by our English ancestors. There is no evidence as to when the kiss became associated with mistletoe. However, we do know that mistletoe was used in Christmas festivities during the Middle Ages. It is also known that the primitive Druids used mistletoe at their festivals.

The hanging of other greens seems to have had its origin in the days of ancient Rome during the festival of Saturn which began on December 17. For many years English ecclesiastical councils forbade the practice because of its association with the pagan Roman rite. However, the English are known to have hung "holme" (evergreen oak), holly, laurel, and other greens well before the seventeenth century.

Perhaps the most popular bit of Christmas greenery we use today is the traditional Christmas tree. According to the ancient Teutonic belief, god-like spirits inhabited the trees of the forests. The Germans, in an attempt to please these "spirits," brought the trees into their homes during their Winter Solstice ceremonies. There is no certain evidence

Calendar Of Holiday Events

With the Christmas season already here, CWers and visitors to Colonial Williamsburg may look forward to many gay and colorful festivities. Some of the major events planned for the holidays in the colonial city are listed below.

Christmas on the Village Green - December 17-January 7. Annual holiday exhibition at AARFAC of special interest to youngsters.

Grand Illumination of the City - December 19. The traditional white lighting ceremony begins at the Capitol at 5:30 p.m., followed by a torchlight parade through the Historic Area.

Williamsburg: Before and After - December 19. An illustrated lecture by Mrs. Allen Callis at the Information Center, 8:30 p.m.

Caroling through the Historic Area - December 20. Led by the members of the Peninsula Choral Society at 8:15 p.m.

The Old Virginia Christmas - December 21. A lecture by Miss Jane Carson at the Information Center, 8:30 p.m.

Holiday Lawn Bowling Tournament - December 22. On Market Square Green from 10:00 a.m. to 4:00 p.m.

Carter's Grove Plantation opens for the holiday season - December 22 through January 1, except for Christmas Day.

Christmas Illumination of the Palace Green - December 22. The traditional ceremony begins at 6:00 p.m.

Firing of the Christmas Guns - December 23. On Market Square at 3:00 p.m.

Costumed Carolers through the Historic Area - December 23. A new event, 8:00 p.m.

Doorway Decoration Contest of private homes in the historic area. Visitors will act as judges and winners will be announced on December 26. Judging will take place from 10:00 a.m. through 5:00 p.m. on December 24-25.

Children's Holiday Film - December 24. At the Information Center -- 2:00, 4:00, 6:00, and 8:00 p.m.

Lighting of the Community Christmas Tree - December 24. On Market Square at 5:00 p.m.

Children's Holiday Film - December 25. At the Information Center -- 11:00 a.m., 1:00, 3:00, 5:00, and 7:00 p.m.

Governor's Palace and Gardens open - December 25. Music by Alan Stewart Trio. 2:30 - 5:00 p.m.

Yule Reception at the Wren Building of the College of William and Mary - December 26. Reception between 7:00 p.m. and 8:30 p.m.

Christmas Decorations - December 27. A lecture by Mrs. Edith Woods, 8:30 p.m.

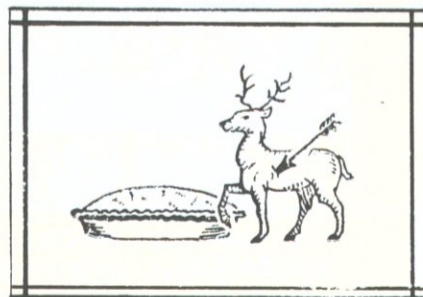
Firing of the Holiday Guns - December 28. On Market Square at 3:00 p.m.

Christmas Illumination of Market Square - December 28. Ceremony begins at 6:00 p.m.

Raleigh Tavern open by Candlelight - December 29. Open from 8:00 p.m. to 10:00 p.m.

Fireworks, Market Square - December 30. The event begins at 6:00 p.m.

Capitol open by Candlelight - December 30. Open from 8:00 to 10:00 p.m.



of when the Christmas tree tradition was introduced in the colonies. However, there is a record of one being in Williamsburg in 1842.

Adapted from Christmas in Colonial Virginia, a report by Mary R. M. Goodwin, CW research associate.

R. Harold McCandlish

The CW NEWS joins all employees in expressing sympathy to the family of retired employee R. Harold McCandlish who died December 3 in Newport Nursing Home after a long illness.

A painter in AC&M for nineteen years, he retired from CW on October 25, 1956.

Survivors include his wife, Minnie Davis McCandlish, and a brother.

AARFAC Prepares for Annual Christmas Exhibition

This year's holiday show at the Abby Aldrich Rockefeller Folk Art Collection, entitled "Christmas on the Village Green," is a wonderland for the young at heart of all ages. Featuring the familiar 19th century toys from the museum's collection, Steiff toy animals, and early electric trains, the show opened December 17 and will be on view at AARFAC until January 7.

A mammoth Christmas tree, decorated with strings of popcorn and early Christmas tree ornaments, fills the center of the museum's main gallery. Along the walls are four unique entrances to galleries one through four. Designed by Roy Woodall, CW's exhibits designer, and constructed by employees in Building Maintenance, the gaily painted entrances include a train, a toy shop facade, Noah's Ark, and a magic cottage facade.

Each of the entrances leads into a special exhibit, such as a toy tunnel where windows display the toys loved by youngsters 100 years ago. The train entrance leads into a gallery display of early electric trains which will be operated by costumed trainmen - Colonel Lisle Burroughs, AARFAC lecturer, John Bolling, retired CW gaoler, and Philip Sparks, former CW employee and son of Harold A. Sparks, Merchandising director. Another entrance carries one into a jungle filled with lions, tigers, parrots, giraffes and other stuffed toy animals.

AARFAC director Peter Brown, who planned the show, indicated that visitors to the exhibit will be treated to homemade cookies, and that there would be a special surprise for each child.



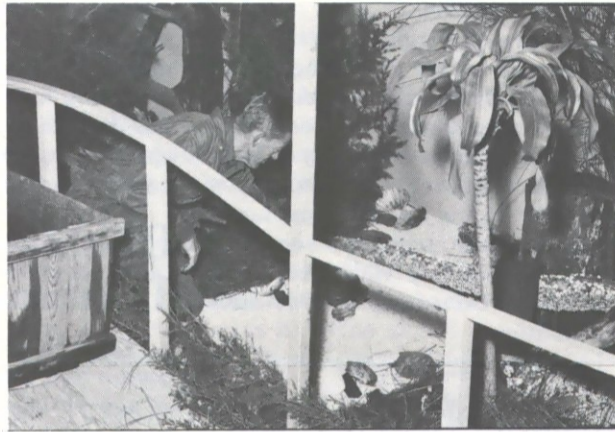
PETER BROWN AND ROY WOODALL CONSULT PLANS FOR THE COMPLETION OF LOCOMOTIVE CAB.



ROY BELVIN, IN BUILDING MAINTENANCE, COMPLETES ONE OF THE SHOP WINDOWS WHICH WILL DISPLAY TOYS.



JEROME RANDOLPH AND DAVID GIVENS DECORATE AARFAC'S CHRISTMAS TREE WITH POPCORN.



IRVIN SPRINKEL ARRANGES SHELLS IN THE MAKE-BELIEVE JUNGLE IN ONE OF THE FIVE GALLERIES ON DISPLAY.



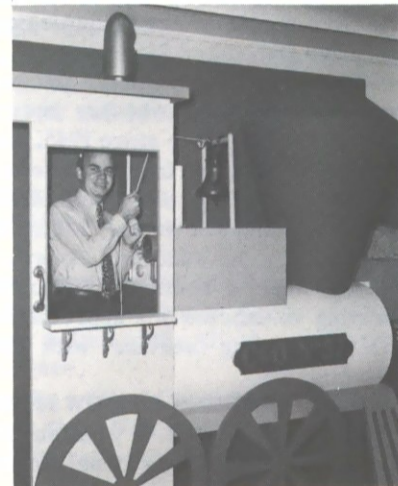
GEORGE TEMPLE AND DICK WARD IN BUILDING MAINTENANCE ADD FINISHING TOUCHES TO THE MAGIC COTTAGE ENTRANCE.



DAN BUCKNER, ALSO IN BUILDING MAINTENANCE, SPRAY-PAINTS PART OF ONE OF THE SPECIAL ENTRANCES.



A MAMMOTH LION, GIRAFFES, AND ALL SORTS OF STEIFF TOY ANIMALS WILL BE USED IN THIS YEAR'S SHOW.



ROY WOODALL RINGS BELL ON THE TRAIN, ONE OF THE FOUR ENTRANCES HE DESIGNED FOR THE SHOW.

COLONIAL WILLIAMSBURG NEWS

Being an Account of that Place and the Men and Women who work there. Published by Colonial Williamsburg at Williamsburg, Virginia.

News office: Ext. 6227
Circulation: Ext. 6228

EDITOR

Richard W. Talley
MANAGING EDITOR
Carolyn J. Weekley
Portraits by C. G. Kagey

U. S. Postage
Williamsburg, Va.
PAID
Permit No. 7
Non-Profit Org.

