

## CW organizational changes take place

In a letter to all employees on June 19, 1972, Mr. Humelsine reported the organizational changes which the Board of Trustees had approved at its meeting June 16-17, 1972. The effective date of these changes has just been announced by Mr. Humelsine.

In broad terms, the proposed realignment of responsibilities results in the elimination of three Divisions as they now exist, the creation of a new Division of Preservation and Research, and the establishment of Construction and Maintenance as a separate Division. The Division of Public Relations is renamed the Division of Public Affairs and Presentation has been renamed the Division of Museum Operations.

The specific organization changes are listed below with the dates each becomes effective.

### 1. Division of Preservation and Research

Effective July 17, 1972, the Division of Preservation and Research is established under the direction of James R. Short.

The Division of Preservation and Research will consist of the Office of the Resident Architect, Eugene George, and the architectural depart-

ments associated with that office, namely,

Architectural Research  
Paul Buchanan  
Architectural Projects  
Donald J. P. Evans  
Landscape Architecture  
Donald H. Parker

and the departments of

Research  
Edward M. Riley  
Archaeology  
Ivor Noel Hume  
Audiovisual Programs  
A. L. Smith  
Publications  
Joseph N. Rountree

### 2. Division of Construction and Maintenance

Effective July 17, 1972, the Division of Construction and Maintenance is established under the direction of Alden R. Eaton.

The Division of Construction and Maintenance will consist of the departments of

Building Maintenance  
Granville Patrick

Landscape Construction and Maintenance

Richard D. Mahone

Mechanical Operation and Maintenance

Royce M. Cottingham

Purchasing and Estimating

Lyman L. Peters

Building Construction

William E. Jacobs

Electronics

Charles C. Squires

### 3. Division of Architecture, Construction and Maintenance

With the establishment of the Division of Preservation and Research and the Division of Construction and Maintenance, the present Division of Architecture, Construction and Maintenance is terminated as of July 17, 1972.

Mr. Hackett will continue as a Vice President and, until his retirement the end of this year, will be assigned to the office of the President for the handling of certain special projects, including the completion of the Providence Hall guest wings, the completion of the new Inn dining room and kitchen, the development of plans and specifications for improvements and alterations to Providence Hall, advice and assistance to Messrs. Short, George and Eaton, and for such other special projects as may be assigned by the President.

Baskerville Bridgforth will continue as Mr. Hackett's assistant.

G. Alan Morledge will continue as Acting Director for Property Management. Additionally, Mr. Morledge is designated as staff architect assigned to Visitor Services building alteration projects. In the performance of these functions, Mr. Morledge will continue to report to Mr. Hackett.

### 4. Division of Public Affairs

Effective July 17, 1972, the Division of Public Relations is renamed the Division of Public Affairs.

On the same date, Thomas B. Schlesinger is transferred to the Division of Public Affairs as Director of Program Planning.

Mr. Schlesinger will continue his responsibilities with regard to the Williamsburg Forum Series along with the administration of the Armed Forces and foreign visit program. As additional duties, he will be in charge of the Lecture Bureau, the evening lecture program and other program responsibilities.

### 5. Division of Interpretation

The present Division of Interpretation is terminated as of July 17, 1972.

### 6. Division of Museum Operations

Effective July 17, 1972, the Division of Presentation is renamed the Division of Museum Operations.

Also effective July 17, 1972, responsibility for bus operations is transferred to the Department of Museum Services under Edward D. Spencer in the Division of Museum Operations.

### 7. Division of Visitor Services and the Department of Security and Safety

Effective August 7, 1972, the Division of Visitor Accommodation Services is renamed the Division of Visitor Services.

On the same date, the department of Security and Safety, under the direction of Elliott W. Jayne, is transferred to the Division of Visitor Services. Mr. Jayne will report to Rudolph Bares, Jr., Vice President and Director of the division.

### 8. Division of Development

Effective September 5, 1972, Thomas G. McCaskey is transferred to the Office of the President. Mr. McCaskey will continue as a Vice President with the responsibility for coordinating the new admission programs and other special projects until his retirement in 1973.

Also effective September 5, 1972, George Wright is transferred to the Division of Public Affairs as director of Travel Development. Additionally, Mr. Wright will have responsibility for the Williamsburg Theatre.

The present Division of Development is terminated as of September 5, 1972.

## Salvage sale on at Warehouse

There will be a group of kitchen cabinets (base and wall), five bath and kitchen fluorescent light fixtures, one tub enclosure, one shower enclosure, one full length plate glass mirror mounted on a door, one Thermador four burner cook top and grill, one Thermador double oven, one blender and parts, two electric bathroom heaters, one small exhaust fan, four medicine cabinets, and two medicine cabinet-size mirrors with frames offered for sale.

These items may be seen at the Main Warehouse until noon, Friday, July 14, 1972. Employees interested in any of the above items are asked to check with

(Continued on Page 2)



## Board honors employees

At the spring meeting of the Board of Trustees of the Colonial Williamsburg Foundation, Board chairman Winthrop Rockefeller presented silver bowls for twenty-five years of CW service to seven employees.

These included (from left to right) Archie M. White, Sr., maintenance

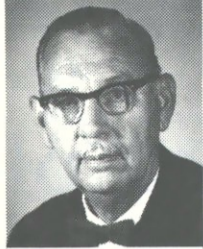
carpenter, Mr. Rockefeller, Frank Smith, maintenance carpenter, Samuel Thomas, assistant manager of the Cafeteria, Ralph Carter, Lodge bellman, Irving Wright, gardener, Nathan Talcott, garden foreman, and Tearussell Burreall, custodian in the Exhibition Buildings.



## Three CWers top 35th anniversaries

Three CWers celebrated their thirty-fifth service anniversaries with the organization during June.

Arthur P. Ward, Jr.



Maintenance Woodworking Shop foreman Arthur P. Ward, Jr., marked his thirty-fifth service anniversary with Colonial Williamsburg on June 5.

Dick began working for CW in 1937 as a carpenter. From 1941 to 1946 he was on military leave, and for several months after his return to CW was assigned to the Woodworking Shop. Serving as a foreman since 1950, he has supervised and assisted with the manufacture of miscellaneous millwork, including furniture, cabinet work, ox carts, cannon carriages, the Landau coach, and authentic wagons, wheelbarrows and farm tools.

Dick and his wife, Josephine, have a son and a daughter. He is a member of the United Methodist Church and, in addition to an interest in all sports, he enjoys walking.

### CUE WILLIS

June 16 marked the thirty-fifth service anniversary for bellman Cue Willis.

## New facilities opened by VAS at the Lodge

New facilities are opening right and left at the Williamsburg Lodge these days. At the end of June the Snack Bar that was so popular to guests and employees alike last summer once again opened in the North Ballroom, and on July 1 a Cocktail Lounge opened off from the main dining room.

The Snack Bar features quick service items including sandwiches, deserts and cold beverages. Its hours of operation are from 11 a.m. until 5 p.m.

The Cocktail Lounge, a new addition this year, features such hors d'oeuvres as crocks of cheddar cheese or port wine spread with crackers, chicken liver pate with toasted miniature bread, shrimp cocktail and broiled Chincoteague oysters wrapped in bacon.

It is open from 11 a.m. until midnight seven days per week, and soft piano music will provide the entertainment.

The Lounge will perform a definite service for conference groups who find time to relax between meetings, as well as providing a relaxing atmosphere and snacks to dinner guests waiting to be served in the main dining area.

Sam Roberts, familiar to many as the bartender at the old Horseshoe Club will be head bartender for the new operation. He will be assisted by a corps of other barmen and cocktail waitresses.

When Cue joined the CW staff in 1937, he was assigned to the old Annex as a bellman. He was transferred to the Lodge in 1939 where he has cheerfully been on hand to greet guests, and to assist them checking into and out of that facility.

Cue and his wife, Viola, have three sons. He enjoys such hobbies as fishing, cabinetmaking and sports.

### ETHEL R. KELLY

Ethel R. Kelly, kitchen supervisor at the Inn reached her thirty-fifth service anniversary here on June 25.

Ethel first worked for CW in 1935 and 1936 as a pantrywoman and cook at Travis House. In 1937 she was again employed being assigned to the Inn as

assistant cook before returning to Travis House as a pantrywoman for eight months. Ethel returned to the Inn in January of 1938 and held numerous posts in the kitchen. She was named pantrywoman in 1948, progressing to head pantrywoman in 1949, and to kitchen supervisor in 1957. Ethel is responsible for scheduling and supervising all pantry personnel, and personally supervises the preparation of hors d'oeuvres and specialities for heads of state and other VIP guests.

Ethel's husband, William, who retired in 1967 after fourteen years of service with CW, was a custodian at the Palace. She is a member of the First Baptist Church of Williamsburg and especially enjoys flower gardening as a hobby.

## Twentieth anniversaries marked by Wilson, Thomas and Martin

During the month of June, three CWers marked twentieth service anniversaries with the organization.

Maynard R. Wilson



On June 11, Maynard R. Wilson, superintendent of the Warehouse and Yards in the Division, accrued his twentieth year of service here.

Randy began working for Colonial Williamsburg in 1952 as a timekeeper in Construction and Maintenance. After a two-year military leave, he returned to the organization in 1959 and worked as Paint Shop clerk for five months. He then became a warehouse clerk, and in 1969 was promoted to superintendent in charge of the Warehouse and its surrounding yards. His responsibilities include ordering and receiving warehouse stock items, handling over-the-counter and departmental orders, seeing that incoming shipments are received and that the proper departments are notified, and that the yards are kept clean and in order. At present, he is also making a study of preparing a catalog of all warehouse items.

Randy and his wife, Wilmer Jean, have three children. He is a member of the United Methodist Church in Dare, the Woodmen of the World, and of the Yorktown Square Edge Dance Club. In his spare time, he enjoys hunting, fishing and woodworking.

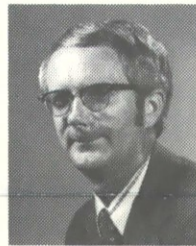
### GOLDIE G. THOMAS

Lodge dining room cashier Goldie G. Thomas reached her twentieth service anniversary on June 12.

Beginning her employment with the organization in 1952, Goldie first worked as a food sales analysis clerk in the Visitor Accommodations Services Accounting Department. From January to April of 1962, she served as an accountant, and then transferred to her present position as a cashier at the Lodge.

Goldie's husband, Sam, who recently celebrated his twenty-fifth anniversary with CW, is assistant manager of the Cafeteria. They live in the Historic Area.

Ray W. Martin



Ray W. Martin, CW's manager of Film Distribution in the Division of Interpretation, marked his twentieth service anniversary here on June 16.

Ray came to CW directly from high school in 1952, first working as a junior clerk in the Audiovisual Department. The following year he became film inspector and shipping clerk and, after returning from a two-year military leave in 1955, progressed from film distribution clerk, shipper-inspector, and administrative assistant to the director to his present capacity as manager of Film Distribution in 1966.

Ray is responsible for selling and renting CW audiovisual materials which reach about 70,000,000 people a year.

His wife, Judy, a records clerk in the Accounting Department, has been employed here for six years. They have one son. Ray is a deacon of the Olive Branch Christian Church in Toano, and several years ago was responsible for organizing a Cub Scout Pack in the Norge, Toano, and Lightfoot area. His hobbies include gardening and swimming.

## Salvage sale, cont.

Randy Wilson at the Main Warehouse. Interested employees will be requested to fill out a slip for the items they wish to buy. Prices will be as indicated on each item. At 2:30 p.m. Friday, July 14, slips will be drawn out of a box for each item until all are sold. Terms are CASH and all items shall be removed from the Warehouse no later than Thursday, July 20, 1972.



## Bob Ward cited by Exchange Club of Williamsburg

At its June 19 meeting, the Exchange Club of Williamsburg awarded CWer Robert Ward a plaque naming him the Exchangeite of the Year.

Receiving the award is based on service to the club and community. Del Russell M. Carneal, in presenting the plaque to Bob, cited him for his work in installing Freedom Shrines at Walsingham Academy and the Williamsburg-James City County Courthouse, and for "putting in many manhours" erecting the Exchange Club booth each year at the Lions Jamboree to raise money for the youth of the community.

At CW, Bob is the foreman in the Sheetmetal Department of MO&M. He began working for Colonial Williamsburg in August of 1951 as a sheetmetal serviceman, and has served as foreman since 1964. As a highly skilled sheetmetal mechanic, he is responsible for the design and layout of work in the Sheetmetal Shop including working with ornamental objects, their construction, repair, and maintenance. He has personally fabricated reproductions of 18th-century sheetmetal objects such as lanterns for street and parking lot lights and brass work for carriage harnesses.

Bob and his wife, Bernice, live in Williamsburg where his other memberships include those in the Christian Church and Williamsburg Elks. His hobbies include gardening and sports.

## CW's latest book now on sale

The latest book to be published by Colonial Williamsburg is **THE JOURNAL OF JOHN FONTAINE, An Irish Huguenot Son in Spain and Virginia 1710-1719**.

The journal was edited by Edward P. Alexander, CW's former vice president and director of the Division of Interpretation, and contains the writings of young Fontaine during the time when he served as a teenage officer in the Spanish Navy.

Of particular note are the passages which deal with his travels as a friend and member of Governor Alexander Spotswood's party on a trip to Fort Christanna and the Indian settlement it

(Continued on Page 3)





## AARFAC exhibit features delightful display of quilts

Folk art enthusiasts will enjoy the latest exhibit at the Abby Aldrich Rockefeller Art Collection. It is AARFAC's first presentation of practical folk art, and comprises a colorful collection of 19th-century bed quilts, which will be displayed until Labor Day.

The 30 quilts in the show represent a broad cross-section of an early American home craft, and though they are all from the 19th century, many carry designs and techniques of an earlier era as patterns and methods used were passed from generation to generation.

Quilts were basically sewn to provide warmth, but also provided an inexpensive opportunity for the housewife to bring bright colors into the home according to museum associate director Beatrix Rumford. They also offered a chance to use leftover materials.

Trix explained that quilts incorporated two household crafts practiced in this country since the 1700's: patchwork and quilting or stitchwork. The degree of decoration reflected in either phase depended largely on the maker's time, material and ingenuity.

In the AARFAC exhibit there are two distinct styles shown. One is a series of single square patches sewn together to form a block of geometric design then

placed together to form a larger, ordered pattern.

Applique quilts have designs hemmed to another piece of cloth rather than pieced together. A few quilts display a combination of both techniques.

(Continued on Page 4)



## Instrument makers build lute

If you pass by the Musical Instrument Maker's Shop and hear soft music from a stringed instrument, chances are that either George Wilson, the instrument maker, or Marc Hansen, his apprentice, are playing the lute they have just completed.

Adapted from the instruments of the late 17th and early 18th centuries, the lute is primarily of ebony, boxwood and spruce. Its beautifully inlaid neck contains ivory renderings of mythological scenes involving the use of musical instruments.

The rosette covering the sounding hole in the main portion of the in-

strument is of unvarnished boxwood. Its design was inspired by the rose windows in many of the great European cathedrals, and is composed of carvings of sixteen different flowers giving the appearance of balance and symmetry though the flowers are not exactly alike.

The lute was begun in 1969, but laid aside for more than a year while George and Marc worked on a copy of the 1765 Kirckman harpsichord now in the Raleigh Tavern and other instruments. It was completed a few months ago, and eventually will be used by the Craft Shops Department.

## Operation Identification underway in local area

The latest project in full swing in Williamsburg is a program entitled **Operation Identification**, a project designed to help reduce residential burglaries by assisting citizens in marking their valuables for quick identification by law enforcement agencies.

Local Independent Insurance Agents, with the co-operation of the local Police Department and Sheriff's Office, are sponsoring the project.

Its purpose is to get local families to mark all valuables in and around their homes with their driver's license numbers. Electric engravers that mark metal, wood, plastic, etc., are being loaned free of charge to any family who wants to participate. Stickers identifying their homes as a participant, are given to the family to post on the front and back doors.

The engravers are being kept on hand at the Local Police Station and Sheriff's Office in Toano. They are loaned free of charge for three days, so citizens are urged to call and make a reservation for their use. After completing the use of an engraver, it is to be returned to the station at which time the participant will be given the identifying stickers.

At the time of marking items, the participant is also to make a list of the items identified.

The Local Independent Insurance Agents sponsoring this program are Benschoten & Carter, Brooks Agency, Marvin-Walker Agency and Savage & Wood Agency.

A spokesman for this group pointed out that in Monterey Park, Calif., where a program of this type was first instituted in 1963, more than 4,000 households were participating by 1971. During the first eight years of the program, only three had been burglarized. Of the 7,000 households that did not participate, more than 1,800 were burglarized.

The program has since spread to other Southern California communities and in the past two years was initiated in areas on the east coast and in the south, including New Orleans.

According to law enforcement officials, the project is not foolproof, but it does discourage thievery for three reasons:

First, "fences," the people who buy and sell stolen goods, do not like to deal with merchandise that is readily identifiable.

Second, thieves are not anxious to be caught with merchandise on their persons that law enforcement officials can prove belong to someone else.

And, third, although the engraved numbers can be filed off, the fact that they are there, makes life harder for the burglar.

It is recommended that the engravers be used to engrave such things as radios, tape recorders, TV sets, record players, cameras, bicycles, power mowers, clocks, and items that have particular appeal to thieves — even jewelry and hub caps.

Driver's license numbers are used in the program because they are easily traced by law enforcement agencies. Items recovered from thieves which are so identified, have an excellent

(Continued on Page 4)

## New book, cont.

guarded, as well as one the famous "Knights of the Golden Horseshoe" expedition over the Blue Ridge Mountains. The latter serves as the principal source of information on this episode in Virginia history.

John himself never settled in Virginia as several members of his family eventually would do, but returned to Ireland and then to England where he married, took up watchmaking and silk weaving and finally retired to a small estate in Wales.

His journal, along with other family letters and papers, was first published in 1853 — as one of his descendants, Ann Maury, had transcribed it, omitting some parts she considered of little interest. Now for the first time the entire journal, fully annotated, appears in print.

It can be purchased at Craft House, the Information Center and in many bookstores where Colonial Williamsburg publications are carried.

## Workshop ends

In its final stage now is a three-week workshop designed to help develop a corps of high school archaeologists in Virginia.

Fifteen different school districts in Virginia are represented at the seminar, and speakers for the sessions have been drawn from the Colonial Williamsburg staff, Virginia Historic Landmarks Commission, the College of William and Mary, Colonial National Historical Park, and from groups elsewhere in Virginia, Maryland, Pennsylvania and South Carolina. The participants also receive training in the practical application of what they learned by assisting with the field work being done on the Public Hospital site on Francis Street.



## CWers mark tenth & fifteenth anniversaries

June was a big month for service anniversaries this year as 11 CWers marked either tenth or fifteenth milestones with the organization. For ten years, these included:

Richard M Fout, general cashier-deposit, and Calvin W. Banks, carpenter apprentice, both on June 6; Leo C Ward, Commissary operations manager, June 18; and Burrell N Bassett, golf course gardener, June 21

Fifteen year anniversaries were celebrated by Rozelma B Evans, clerk, June 7, Antonia E. Hale, senior reservations clerk, June 13, David A. Givens, Cascades dining room captain, June 17; Elizabeth Parsons, housekeeper, June 22, Douglas M Lee, night houseman, and Mary Ann Jackson, night housekeeper, both on June 23

Congratulations to all!



Burrell N. Bassett



Rozelma B. Evans

## R. B. Hensley retires July 1

On July 1, Robert Hensley, film distribution supervisor in the Division of Interpretation, retired after seven years of service to Colonial Williamsburg

R B began working for the organization in Nov of 1965, as film distribution clerk. The following year, he was promoted to film inspector and a short time later was named film distribution supervisor. His duties have included responsibility for inspecting, reviewing, mailing and sometimes booking films for the department

R B's wife, Georgia, is employed at Craft House. They have two married daughters. He is a retired Army Colonel and a few years ago received his Master's Degree from the College of William and Mary. R.B belongs to the Kappa Sigma Social Fraternity and Retired Officers Association. In his spare hours, he enjoys golf, photography and gardening

### COLONIAL WILLIAMSBURG NEWS

Being an Account of that Place and the Men and Women who work there. Published by Colonial Williamsburg at Williamsburg, Virginia

News office: Ext 6227  
Circulation Ext 6447

EDITOR  
Richard W Talley  
MANAGING EDITOR  
Mrs John Gearhart

## Ellen Mae Canady

The Colonial Williamsburg News joins all employees in expressing sympathy to the family of Ellen Mae Canady, who died Friday, June 9, 1972

Mrs Canady had been employed since last November as a telephone operator in the Division of Visitor Accommodations Services.

Survivors include her mother, Louise Carter, a daughter, a son, five brothers, four sisters, and her maternal and paternal grandmothers.

## AARFAC exhibits quilts, cont.

"Designs for quilts, as in most other folk art, originate from familiar objects or particular customs or traditions," Trix said. Those in the show vary from "Wedding Band and Heart," a popular design for a wedding present, to "Drunkard's Path." Trees, abstract renderings of wildflowers and stylized animals were favorite motifs as were numerous sunburst and star patterns

The quilt exhibition is on display in the second-floor galleries. Four recently acquired portraits by Rufus Hathaway, now exhibited in the main lobby with other 18-century portraits, and James Hampton's "Thorne of the Third Heaven of the Nation's Millennium General Assembly," also will be shown through Sept 4

## Twenty-fifth milestones marked by three CWers

Twenty-fifth service anniversaries were accrued by Archie M. White, Sr., Louise White and Howard D. Brindle during the month of June

### LOUISE WHITE

On June 30, Louise White, desk clerk at the Williamsburg Lodge, reached her twenty-fifth service anniversary here

Louise first worked for Colonial Williamsburg as a food checker in 1941 and 1942. Returning to work for the organization in 1946, she was employed as a checker-cashier, and for several years served as head food checker. She then became front desk cashier and was head food checker again from 1953 until 1956. In July of 1956, she assumed her present position at the front desk of the Lodge where, in addition to assigning guests to their rooms when they check in and providing general information, she assists with future reservations and with making dining reservations for guests when requested

Louise is a past member of the Easter Star, and attends the Methodist Church. She enjoys such hobbies as sewing, bowling and golf

### HOWARD D. BRINDLE

June 30 also marked the twenty-fifth service anniversary of CW bus driver Howard D Brindle

Howard first worked for the organization as a truck driver with the Landscape Department where he assisted with sanitation pick-up in the Historic Area, delivering firewood to the Exhibition Buildings and Craft Shops, and making out-of-town trips to pick up nursery stock. Occasionally he also operated a tractor for the department. In 1967, Howard transferred to his present position as a bus driver

Howard and his wife, Doris, have three children. A member of the Baptist Church, he especially enjoys fishing and gardening when not at work.

## ID, cont.

chance of being returned to the original owners. The engravers are calibrated so that they can engrave practically anything, even very hard objects.

For further information contact the Police or Sheriff's office

## Merton Williams

The Colonial Williamsburg News joins all employees in expressing sympathy to the family of retired employee Merton A Williams, who died Friday, June 9, 1972, in Williamsburg Community Hospital

Mr Williams was employed in August of 1952 as a gaoler-guard in the Division of Presentation, and in 1955 became a host at Chowning's Tavern. He retired in March of 1959

Survivors include his wife, Alice T Williams, a brother and a sister



Archie M. White, Sr.

Maintenance Carpenter Archie M White, Sr celebrated his silver service anniversary with Colonial Williamsburg on June 9

Serving briefly as a carpenter from 1938 to 1942, Archie returned to CW in his present position in June of 1947. He performs all types of maintenance carpentry duties throughout CW's properties and assists with the preparations for special events

Archie and his wife, Evelyn, have three children. Their son, Archie, Jr., has been a CW electronics employee for sixteen years. Archie is a member of Emmaus Baptist Church in Poquoson, and enjoys such leisure time activities as sports, fishing and working on his boat.

# FILM FARE

## Williamsburg Theatre

Merchants Square  
Phone: 229-1475

July 5 through 8 — **DIAMONDS ARE FOREVER** — World-famous agent 007 finds himself in Las Vegas trying to uncover the mystery behind a diamond smuggling racket, winds up stealing a lunar vehicle from astronauts practicing on a simulated moon surface, a computer room on an oil rig; in a replica of an American mortuary, and of course, in a luxurious hotel suite with leading lady Jill St John. Sean Connery is in the James Bond role once more. Show times: 7 and 9 p.m. Rated: GP

July 9 and 10 — **KOTCH** — Walter Matthau won an Academy Award for his portrayal of a 72-year-old widower in this story of the poignant and touching relationship between an old man and an unmarried pregnant teenager, portrayed by Deborah Winters. The comedy-drama is basically the story of loneliness, old age and the heightened need to be needed, a condition common to the aged. Show times: 7 and 9 p.m. Rated: GP

July 11 — **TAKE THE MONEY AND RUN** — Woody Allen is the bungling

bandit who manages to mess up every attempt at crime, fails to make the "ten most wanted" list, and finds himself in a hopeless mess while trying to go straight. This hilarious comedy was written and directed by Woody. Show times: 7 and 9 p.m. Rated: GP

July 12 through 18 — **THE FRENCH CONNECTION** — Academy award winner Gene Hackman stars in this dirty, stark and ruthless story of two narcotics detectives and the biggest international dope catch ever made by the New York City Police Force. The film contains one of the greatest "chase" scenes ever filmed. Show times: 7 and 9 p.m. Rated: R

July 19 through 25 — **THE COWBOYS** — What do you do when you have 1200 head of beef to get to the railroad 400 miles away, and all the men in town have gone to look for gold? John Wayne, as Wil Anderson, hires 11 "cowboys" to do the job. Ranging in age from nine to fifteen, they meet the challenges of the trail to become men. Show times: 6:45 and 9 p.m. Rated: GP

U S Postage  
Williamsburg, Va  
PAID  
Permit No 7  
Non-Profit Org



Colonial Williamsburg News  
Drawer C  
Williamsburg, Va  
Correction Requested