

## Gifts and grants totaled \$21.2 million in 1990

Educational programs and services at the Colonial Williamsburg Foundation, a not-for-profit educational institution, benefited from gifts and grants totaling \$21.2 million during 1990.

The 1990 fund-raising results are a record achievement for Colonial Williamsburg's development program established in 1976. Nearly 45,000 donors participated in the fund-raising effort in 1990. Since 1980, gifts and grants have totaled \$98.3 million.

The majority of gifts and grants supports specific projects or activities, among which are the restoration of the courthouse, the expansion of the Abby Aldrich Rockefeller Folk Art Center, the African-American interpretive program and the Bruton Heights School Educational Center.

Of the \$21.2 million raised during 1990, the Colonial Williamsburg annual fund generated \$4.6 million in gifts for unrestricted purposes. This marked the fund's 14th consecutive annual increase. The fund includes \$596,000 in unrestricted gifts from some 955 corporations and businesses.

The Foundation's major donor group, the Raleigh Tavern Society with 179 members, contributed \$846,788 in unrestricted gifts and \$9.2 million in additional restricted gifts and pledges during the year. Raleigh Tavern Society members contribute at least \$5,000 each year.

The 158 members of the Colonial Williamsburg Associates gave a minimum of \$2,000 each and provided a total of \$263,498 last year. The 228 Colonial Williamsburg Burgesses, a new group formed in 1990 for donors of at least \$1,000, contributed \$240,639.

Planned Giving, which offers donors

an opportunity to make bequests to Colonial Williamsburg or participate in life income gifts, had significant growth during 1990.

Life income gifts of \$4.3 million were received. Cash gifts came from four estates and more than \$2 million in antique objects were received for the Colonial Williamsburg collections, including outstanding pieces from the private collections of Mr. and Mrs. Joseph Hennage of Williamsburg and Mrs. Cora Ginsburg of New York City.

"The generosity of so many thousands of Americans confirms the importance and viability of Colonial Williamsburg," said Charles Longworth, president of the Foundation. "Despite recession and war, our donors understood the importance of teaching history and Colonial Williamsburg's important role."

"Successful fund-raising nurtures successful educational programs," said F. Roger Thaler, Colonial Williamsburg Foundation vice president for external affairs. Thaler has led Colonial Williamsburg's development program since its inception. "Because so many donors have benefited personally from their experience here, they are eager to help ensure the quality which is the hallmark of Colonial Williamsburg's performance as a history museum."

## Tazewell lottery winners!

The Tazewell Club Fitness Center would like to congratulate Linda Seibert and Harold Twining for winning massages at the club during the April Massage Lottery. Their names were chosen from approximately 100 cards placed in the lottery box during April. Continued good luck!



## Do you need weekend child care?

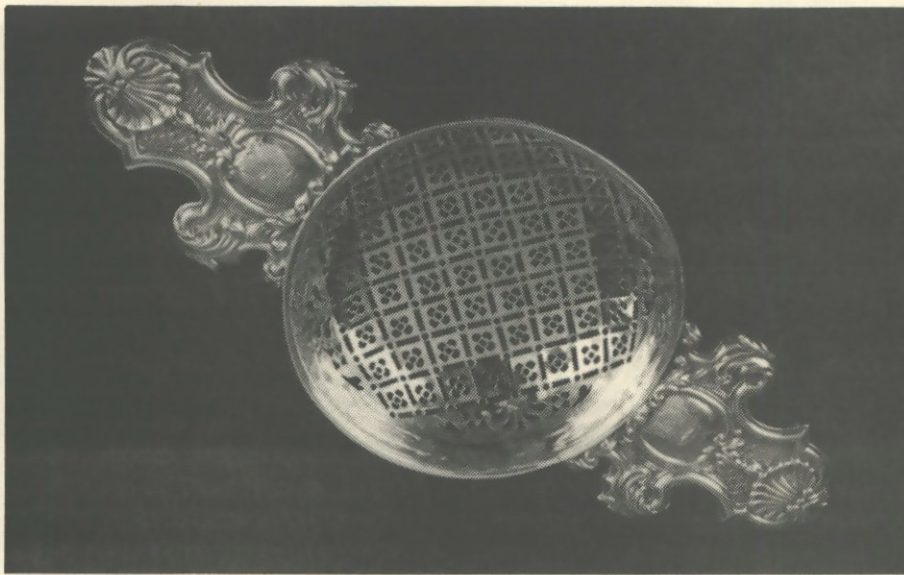
The Colonial Williamsburg Child Care Center may offer weekend child care to all employees if there is sufficient demand.

If your position requires you to work Saturday and/or Sunday and you would like to see the center opened on weekends, please call Peggy Bender on ext. 7185 **no later than Wednesday, May 15**, and provide the following information:

- Your name, work location and work phone number;
- The name(s) and age(s) of your child or children;
- If you need care Saturday, Sunday or both;
- How often this care is needed.

## What's happening

- ✓ Nimble Thimbles, Mondays, 5:30-7 p.m., Woodlands Caucus Room. For information call Brenda Pruitt at ext. 7658.
- ✓ Town Criers Toastmasters, second and fourth Tuesdays, noon, PTB. For information, call Libbey Oliver, ext. 7223.
- ✓ CW Chorus rehearsal, Tuesdays at 5:45 p.m. in the Center Room, Woodlands.
- ✓ Fencing, Tuesdays, 5:45 p.m. in the PTB.
- ✓ "Dreaming of Diana: The Lila Acheson Wallace Garden" lecture by Lawrence Griffith, Hennage Auditorium, Wednesday, May 15 at 4 p.m.
- ✓ *The World Comes to Williamsburg - The Summit 1983 and 1776 - America*, Central Library Wednesday, May 15 at 2 p.m.



This punch strainer shows the Hugenot influence on English design.

## Punch strainer exhibit opens in Wallace Gallery

"Punch Strainers from the John Hyman Collection," a new exhibit in the DeWitt Wallace Decorative Arts Gallery, features silver punch strainers dating from 1690 to the early 19th century.

The exhibit, located in the Metals Study Gallery, includes 44 examples of punch strainers from England, Scotland, Ireland and the United States.

Punch strainers are bowl-shaped containers with holes pierced into the bottom, allowing the flow of liquid. The bowl is bound by one or two handles, some featuring elaborately detailed handles, while others are basic in design.

Punch strainers became important in the 17th century when punch was the preferred drink of King William III. The

beverage was brought to England in the 17th century from India and consisted of brandy, sugar, pure water, a spice and citrus juice imported from Spain, Africa and China. Strainers were essential to remove pits and pulp from squeezed fruit.

In the 18th century, the pierced holes in the base of the punch strainers were created by "saw piercing." The piercing was mainly accomplished by women known as "basket women."

"The silversmith would hammer the silver into shape," said James Curtis, master silversmith at the Golden Ball in Colonial Williamsburg. "We recently made a silver punch strainer for Queen Beatrice of Denmark when she visited Colonial Williamsburg," said Jim.

## New video focuses on getting ready for visitors

The first 1991 edition of *Colonial Williamsburg Today*, and fourth in the series, will be ready for distribution early next week.

The theme of "getting ready for our visitors" appears throughout the video, with visits to the Plant Nursery, Lila Acheson Wallace Garden, Williamsburg Lodge, a core curriculum class, the Peyton Randolph House and several other sites in the Historic Area. A salute to recent retirees is the closing segment. Overall, more than 50 employees from nearly all divisions appear in the spring season program.

Hosts for the 26-minute production are Peggy Howells of Museum Studies and Osborne Taylor Sr., of the Abby Aldrich Rockefeller Folk Art Center.

Katie Veilleux, associate producer in Audiovisual, produced the program.

Employees may arrange for showings at the Foundation Library in the Boundary Street Building and the Audiovisual Department in the Goodwin Building. The Group Tour Office in the Group Arrivals Building, Human Resources waiting room in the Franklin Street Building, and the Employee Cafeterias in the Williamsburg Inn and Williamsburg Lodge also have copies. Each administrative officer and director will receive a copy for showings in his or her areas.

Videos may be borrowed for daytime showings or overnight home use from the officers and directors, from the Library, and from Audiovisual.

## Learn results of Carter's Grove land use planning

Employees can learn about the preliminary land use plan prepared by Colonial Williamsburg and James City County for the 230-acre "Green Tract" next to Carter's Grove. Informal discussions for employees only will be held from noon to 1 p.m. Monday, May 13, at the Personnel Training Building, and from 5 to 5:30 p.m. Tuesday, May 14, at the Carter's Grove Reception Center.

The plans include an elementary school site, a public park and a private business park. A portion of the property is involved in a land swap that includes Bruton Heights School.

There also will be a public presentation and discussion of the plan at 7 p.m. Thursday, May 16, at the Carter's Grove Reception Center. Call Tory Gussman at ext. 7159 for more information about the employee discussions or the public hearing.

## Take a second look at CW

"People and Programs, a Second Look" will be offered Monday, May 20 from 8:30 a.m. to 4 p.m. in the Personnel Training Building.

The course offers a chance to become re-acquainted with the Foundation, its mission, its values, its Seven-Year Objectives. Employees take a customized town tour and learn more about the best place to work.

For more information, or to register, call Jean Hancock at ext. 7115.

## Kane to demonstrate apple cone decorating

Elizabeth Kane will demonstrate apple cone decorating at the Lodge Gift Shop on Sunday May 12, from 9 a.m. to 2 p.m. The apple cone bases are available at the Lodge Gift Shop.

---

**The *Extra* is published weekly by the Communications Department. Deadlines are 5 p.m. every Tuesday. Call Sally Riley, ext. 7968, for assistance. Send announcements via interoffice mail to *CW News Extra*, GBO. Or, FAX them to Sally Riley, ext. 7702.**