

COLONIAL WILLIAMSBURG NEWS

Volume 23, Number 11

Williamsburg, Virginia

November 28, 1969



Carlisle H. Humelsine and Mrs. Humelsine are shown with Dr. Wilson H. Elkins, president of the University of Maryland, and his wife at presentation ceremonies in College Park, Md., when Mr. Humelsine was presented the University Alumni Association's National Distinguished Alumnus Award.

Humelsine receives Maryland's Distinguished Alumnus Award

Carlisle H. Humelsine, president of Colonial Williamsburg, received the Fifth Annual National Distinguished Alumnus Award from his alma mater, the University of Maryland, Homecoming Day, November 8.

H. Russell Knust, president of the University of Maryland Alumni Association, presented the award, given each year to an alumnus who has achieved national distinction in his chosen field, to Mr. Humelsine at the Alumni-Student Luncheon.

A native of Hagerstown, Mr. Humelsine majored in history and graduated from the College of Education in 1937. As special assistant to the then university president, H. E. Byrd, he remained for four years after graduation.

In 1941, Mr. Humelsine was called into service where he became staff assistant to General George C. Marshall. At the end of the war, he joined the Department of State where he assisted in its reorganization. In 1950, Mr. Humelsine was named Assistant Secretary of State, at age 35, the youngest man to hold this rank. Later that same year he was made Deputy Under Secretary for the Administration.

Mr. Humelsine's association with the work of restoring Williamsburg began in 1953 when he was appointed executive vice president and senior resident officer. He served the organization in this capacity until he was elected president of CW in May, 1958.

Mr. Humelsine's tenure as presi-

dent of Colonial Williamsburg has been marked by growth. Visitor facilities have been expanded, the most recent addition being the Cascades Restaurant and Meeting Center. The educational experience available to visitors to the Historic Area has been enlarged in many ways, the most apparent being the four additional major exhibition buildings: The Peyton Randolph House, the Geddy House and Silversmith Shop, Wetherburn's Tavern, and the Wren Building.

In January, 1967, President Johnson appointed Mr. Humelsine chairman of the American Revolution Bicentennial Commission. At present, he is vice-chairman of this commission created by the U. S. Congress to prepare a program for commemorating the 200th anniversary of the American Revolution, 1976 through 1981. Mr. Humelsine also serves as one of three non-federal members of a commission to study and improve services and facilities for visitors to Washington, D. C.

Boards Approve '70 budgets and sale of Kingsmill

A 1970 operating budget of \$9 million for historical and educational activities was approved Friday by the board of trustees of Colonial Williamsburg, Inc. At the same time, the board of directors of Williamsburg Restoration, Inc., set a \$16.5 million operating budget for the subsidiary business corporation.

Arkansas Governor Winthrop Rockefeller, chairman of the boards, presided over the annual fall meetings held at the Williamsburg Conference Center.

Four new board members attended their first meetings. They are trustees Daniel J. Boorstin of the Smithsonian Institution and Dean Rusk, former Secretary of State, and directors Craig Claiborne, New York Times food editor, and T. Justin Moore, Jr., of the Virginia Electric and Power Co.

During the meetings, CWI trustees reviewed 1969 operations and heard that exhibition buildings have shown a 4.75 per cent increase in attendance through October.

The trustees received reports on increased wage adjustments, the successful operation of the South Information Center, and other program adaptations required during the first season of the expanded exhibition building program.

The trustees also gave an enthusiastic endorsement to the proposed sale of Kingsmill Plantation to An-

heuser-Busch, Inc.

The sale of Kingsmill had been approved earlier by the executive committees of both corporations. In a resolution supporting these decisions it was stated that the trustees "...enthusiastically endorse and approve the proposal relating to the sale and development of Kingsmill as presented by WRI and commend that corporation and Anheuser-Busch for an enlightened concern for and response to the public interest."



Chairman Winthrop Rockefeller greeted four new members at the November meeting of the boards of Colonial Williamsburg, Inc. and Williamsburg Restoration, Inc. From left to right, they were Dean Rusk, T. Justin Moore, Jr., Mr. Rockefeller, Craig Claiborne and Dr. Daniel J. Boorstin.

Bloodmobile here

December 9

10:00 a.m. - 4:00 p.m.

Fire Station

300 pts. needed to meet quota

Get out and give!

Christmas catalogue new and different this season

The new, full-color "Gifts from Craft House," the Christmas catalogue issued prior to the Yuletide Season by Craft House, is on its way to various Williamsburg friends throughout the country.

When they open their copies, the patrons will find a unique surprise. Through the system of rear projection photography, the at-home shoppers will almost feel they are in the colonial capital.

In using the rear projection technique, Del Wenzel, CW's museum photographer, was able to superimpose the Craft House merchandise against the colorful slides of National Geographic Magazine's staff photographer Jim Amos. Together these slides and objects present the true flavor and spirit of the Williamsburg of long ago.



Seaton's view their gift

Mr. and Mrs. George Seaton view their gift, Grandma Moses' "Hoosick Falls in Winter," on display at the Abby Aldrich Rockefeller Folk Art Collection. Seaton, who has served on the Board of Trustees of Colonial Williamsburg, Inc., since 1958, was in Williamsburg for the fall board meeting. He is Writer-Director for Universal Pictures, and two years before his election as trustee, directed the filming of "Williamsburg - The Story of a Patriot." Hoosick Falls is the town in which Grandma Moses died, and this painting is considered an outstanding example of her work. Her diary shows that she executed the work on December 21, 1944. The Seaton's gift to AARFAC is the only selection of Grandma Moses' work in the Collection.

Wanted: CW Santas

Last year during the holidays, several CW departments enjoyed the real spirit of Christmas by providing presents or food to make Christmas brighter for less fortunate members of the community.

This year, the CW NEWS will again act as a clearing house in cooperation with the Yule Basket Committee of the Williamsburg Community Council to help more CW departments spread the Christmas spirit. There are families with young children, elderly couples and many individuals who are waiting for CW Santa Clauses.

Call the CW NEWS, Extension 6227, by December 12 to find out how your department can give a happier, warmer Christmas to a family or to an individual in the Williamsburg area.



Craftsmen win New England-Colonial Williamsburg tourney

Lawn bowlers are a small but enthusiastic lot.

On Thursday, November 13, 12 men and women from the Spalding Lawn Bowling Club of Whitefield, N. H., arrived in this old city to challenge the colonial craftsmen and put to test the traditional theory of the "home lawn" advantage.

The competition marked the New Englanders' first visit to Williamsburg, though the two teams are old rivals. Each year they meet in the annual New England-Colonial Williamsburg Lawn Bowling Tournament at Whitefield. In previous competition play the Northerners boasted an over-all record of 8-2 against their Southern counterparts, but the craftsmen were eager to even the odds.

The craftsmen opened a 3-1 lead in the first round, held a 5-3 advantage

at the end of the second round, and put the match out of reach of the visitors 9-3 at the end of the third round. In the fourth and final round, the Williamsburg teams continued this advantage with a 3-1 match score to reach the final 12-4 total and final score 165-131.

The leading team in the tournament was the Blacksmiths, captained by John Allgood and including Nick Payne and Larry Kaufer, with a 4-0 score. Second was the Bootmakers, Mike Kipps, Randy English and Ray Townsend, 3-1, and third was the Silver-smiths, Art LaBonte, Alden Eaton and Dick Mahone, also 3-1, but with a lower cumulative point total.

The rain-out of the original first day of play required scheduling all four rounds on November 13, necessitating shorter matches than usual.

Calendar Of Holiday Events

Annual Christmas Exhibition - Dec. 19-Jan. 4 at the Abby Aldrich Rockefeller Folk Art Collection, a holiday exhibition of special interest to children.

Grand Illumination of the City at 5:30 p.m., Dec. 19.

Williamsburg: Before and After, a fascinating illustrated lecture by Mrs. Allen Callis. Colonial Williamsburg Information Center, 8:30 p.m., Dec. 19.

Colonial Militia Muster, costumed citizen-soldiers drill as fifes and drums play tunes well known to Washington's Army. Market Square, 3:00 p.m., Dec. 20, Dec. 30, and Jan. 3.

Caroling in the Historic Area, beginning at the Palace, 7:30 p.m., Dec. 20; beginning at Bruton Parish Church, 7:30 p.m., Dec. 21; beginning at the Capitol, 7:30 p.m., Dec. 22, and beginning at the Galt Apothecary Shop, 8:00 p.m., Dec. 23.

Holiday Lawn Bowling Tournament, with instructors for beginners in this ancient sport at Market Square. Refreshments. 10:00 a.m. to 4:00 p.m., Dec. 22.

Holiday Decorations, comments and beautiful color illustrations showing the arrangements and decorations used in Colonial Williamsburg; by Mrs. Edith Woods. Information Center, 8:30 p.m., Dec. 22.

Firing of the Christmas Guns by costumed colonial militiamen, an exciting event on Market Square, 3:00 p.m., Dec. 23.

Doorway Decoration Contest of Private Homes in the Historic Area, with visitors acting as judges. Dec. 24 and Dec. 25.

Children's Holiday Film, a feature-length movie for young patriots and parents, too. Colonial Williamsburg Information Center. Dec. 24 - 2:00, 4:00, 6:00 and 8:00 p.m.; and Dec. 25 - 11:00 a.m., 3:00, 5:00 and 7:00 p.m.

Community Christmas Tree. Lighting of the tree, illumination of the St. George Tucker House, and story of Virginia's first Christmas tree. Market Square, 5:30 p.m., Dec. 24.

Band of Musick Concerts, a score of costumed performers play authentic tunes on instruments of the period. Williamsburg Lodge Auditorium. 4:45 and 6:00 p.m., Dec. 25.

Southern Spirituals performed by the Williamsburg Quintet. Williamsburg Lodge Auditorium. 8:00 p.m., Dec. 25.

Colonial Sports Day with music, contests, dancing, racing, and greased-pole climbing. Market Square. 3:00 p.m., Dec. 27.

Yule Reception at the Wren Building of the College of William and Mary with tours of this historic structure, music and refreshments around a bonfire in the courtyard. 7:30 p.m. to 8:30 p.m., Dec. 28.

Fireworks, a display of aerial bursts and authentic colonial set-pieces to welcome the New Year. Market Square. 6:00 p.m., Dec. 31.



The Blacksmiths, winners of the New England-Colonial Williamsburg Lawn Bowling Tournament, receive first prize pewter bowls from Ran Spalding, founder of the Spalding Inn of Whitefield, N. H. The Blacksmiths are, from left to right, Nick Payne, Larry Kaufer and team captain, or skip, John Allgood.

Architectural Glossary X

Kitchen fireplace and bake oven

The CHIMNEY BREAST is the projecting face of a fireplace wall containing all the elements for "the Convenience of Firing." A kitchen fireplace is much larger than fireplaces designed for heating rooms and, consequently, usually has a large wood beam supporting the brickwork over its wide opening. This beam is called a BRESSUMER or mantel-tree. It often serves a secondary purpose by providing a surface to which the MANTEL SHELF can be fastened with wood brackets.

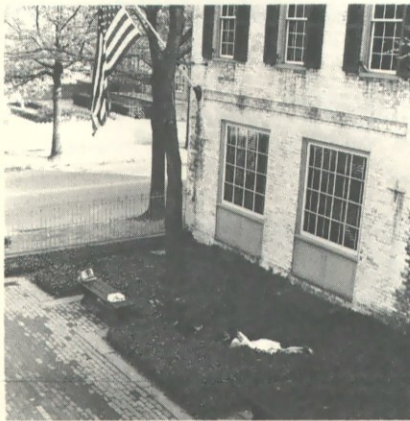
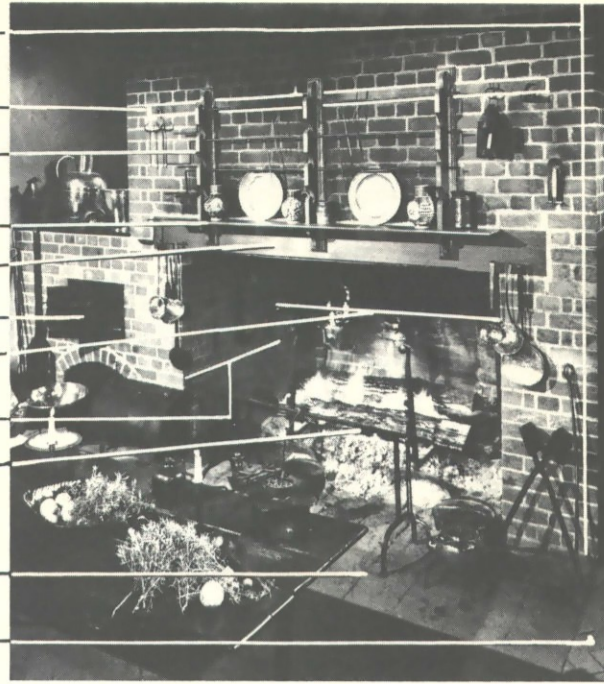
Several courses above the bressumer is a smaller BOND TIMBER imbedded in the brickwork. This member serves to level the brickwork and to distribute uneven settlement. Furthermore, if the bressumer failed or burned out, the bond timber would support the upper brickwork until the heavy beam could be replaced. It also can be used to nail hooks and other devices for hanging cooking implements.

The inner sides of a fireplace are called CHEEKS, its rear wall is known as the FIREBACK, and its floor is the HEARTH. For safety, the hearth projects beyond the chimney breast into the room. This particular hearth is made of large, square, 12" x 12" brick tiles and the kitchen floor is laid with brick in a HERRINGBONE pattern.

The BAKE OVEN pictured here is the type without a smoke hood. When used, smoke exhausts through the oven door and, filling the room, makes the kitchen virtually unusable for anything except baking.

The SPIT RACK is a wood frame mounted above the fireplace where the long rods, or SPITS, for roasting meat are stored.

- CHIMNEY BREAST
- BOND TIMBER
- SPIT RACK
- MANTEL SHELF
- BRESSUMER
- BAKE OVEN
- FIREBACK
- CHEEKS
- SPIT
- HEARTH
- HERRINGBONE



New plants for Goodwin Building?

Shades of the good old summertime spread over the Goodwin Building the afternoon of November 18 when the building's traditional ivy crop sprouted two new specimens. The Landscape Department was called in to identify the unusual "plants," and, after much study, announced them to be exotic *homo sapiens*. According to Landscape, they are found all over the world and in varying climates, but seem to enjoy warmer areas best. Ours probably originated at the College of William and Mary. They seemed to thrive in the rich soil of the ivy patch, and were quite enjoyed by the personnel in the Goodwin Building. Because of their bulk and non-conformity with the traditional Goodwin Building surroundings, were removed again to the College.

New street regulations effective Dec. 1

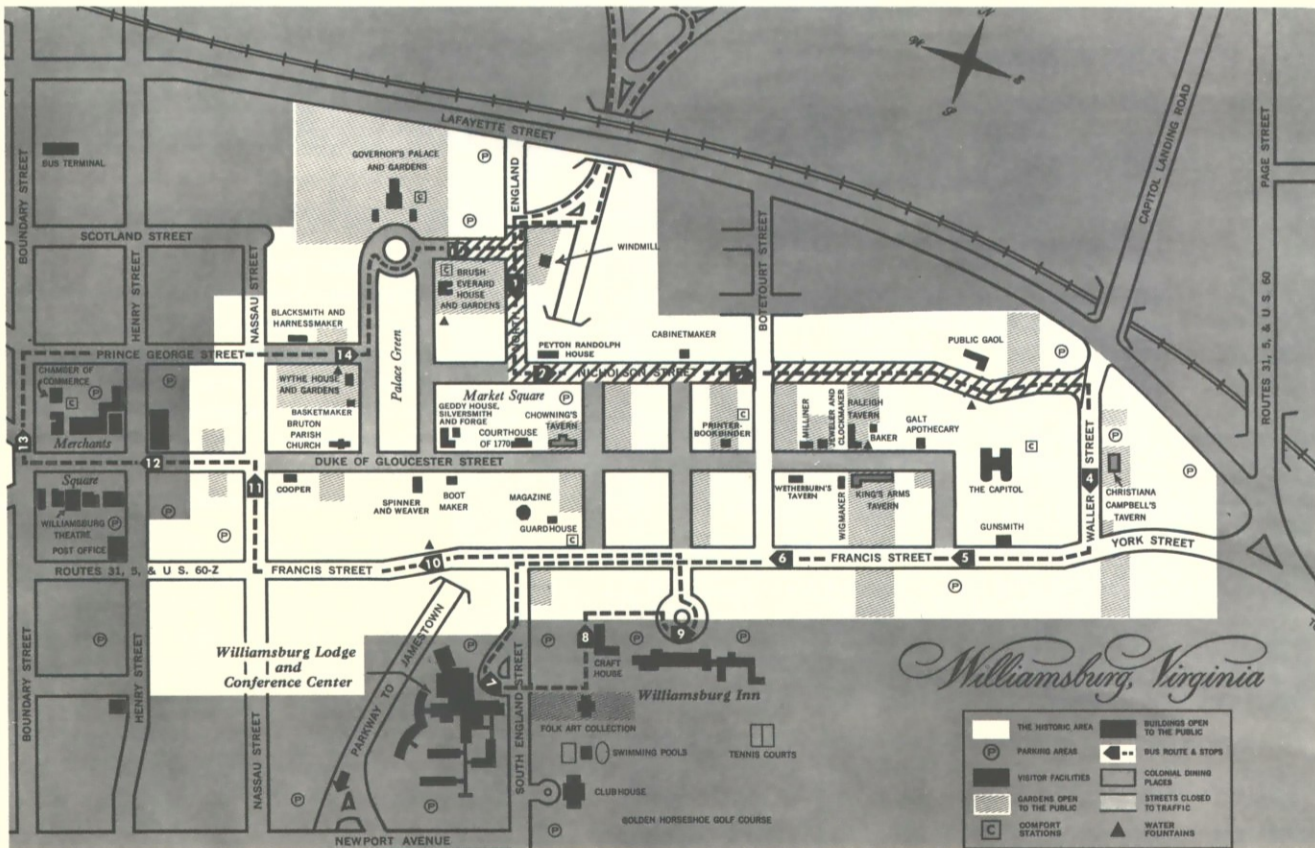
Beginning December 1, year-round street closures will go into effect in Williamsburg. All streets formerly effected by the 8:00 a.m. to 6:00 or 9:00 p.m. curfew will continue to be restricted under the new plan. There has been an addition to the restricted

area, however. After December 1, North England Street, from bus stop 1 to Nicholson Street, will be closed as will Nicholson Street from the Peyton Randolph House to Waller Street.

Staff members who enter Williamsburg from the Colonial Parkway

near the Palace will have to turn north at the Palace to Lafayette Street to reach the business district and Capitol areas of town.

The shaded areas of the map of the Historic Area show the new restricted area.



Leonard Rosser

The CW NEWS joins all employees in extending sympathy to the family of Leonard Rosser, who died Sunday, November 9, as the result of injuries received in an automobile accident.

Mr. Rosser had been employed here as a stock clerk in the Motor House Gift Shop since October 28, 1969.

He is survived by his father, Herman Rosser, Sr., a janitor in the Building Maintenance Department, his mother, three brothers, including Herman Rosser, Jr., a kitchen utilityman at the Williamsburg Inn, and three sisters.

Two promoted at King's Arms Tavern

Louida Taylor, tavern maid at King's Arms Tavern, was named kitchen supervisor at King's Arms November 11.

Louida began working for Colonial Williamsburg in March of 1958 as a housewoman at King's Arms, and served in that position until becoming a pantrywoman there a month later.

In 1965, after returning from a leave of absence, Louida served as a housewoman at King's Arms. She was promoted to tavern maid in March of 1967, and served in this position until her recent appointment as kitchen supervisor.

Louida is a member of the Le Femmes Social Club and Grafton Baptist Church. Her hobbies include collecting recipes and cooking.

Randolph L. Cox, kitchen supervisor at King's Arms, was promoted to wine steward there November 9.

Randy first worked for the organization in March of 1968 as a barman at Chowning's Tavern. He remained in that position until being transferred to King's Arms as a kitchen supervisor in July of that same year. He served in this capacity until his recent promotion to wine steward.

Randy and his wife, Esther, have one son, Michael Edward, born this past summer.

Mini-football all stars, champs boast CW youngsters



On Monday night, November 17, mini-football was at its best with the league's All Stars meeting the league champions, Watts-Fiat, in an exciting match at Cooley Field. The cham-

pions held their position in a close 6-0 victory over the All Stars.

CW youngsters on the Watts team were (L-R, row 1) Wade Slate, Theodore Howard, Ronald Cooke, (L-R,



row 2) Randy Hopkins, Roderick Crawford, Carl Slate and Garland Zeigler.

CW All Stars, coached by Presentation's Luther Mitchell, were (L-R,

row 1) Tom Moore, Kevin Davis, Calvin Gray, Rodney Diehl, (L-R, row 2) Chip Jones, Ken Johnston, Michael Richardson, Bryan Lehman and Maurice Tose.



Minnie and Patsy join CW stable family

There are new faces in the stables. Minnie and Patsy, two beautiful bays which boast Clydesdale and Hackney in their lineage, were recently purchased in West Chester, Pa., to become part of our stable corps. They replace old-timers Pat and Star who will be in pasture as part of Life-on-the-Scene or used to carry special guests through the Historic Area. Charles P. Jackson will probably get to know Minnie and Patsy best as he drives them through the city.



Taylor receives silver bowl

Robert E. Taylor, retired senior draftsman in the Division of Architecture, Construction and Maintenance, received a twenty-five-year service award at the November 14 meeting of the CWI and WRI boards held at the Conference Center. Bob accrued twenty-five years of service on February 15, 1969, prior to his retirement on April 1. Shown with him is chairman Winthrop Rockefeller who made the presentation.

Two employees celebrate anniversaries

Two Colonial Williamsburg employees accrued fifteen years of service with the organization during the last half of November.

Myrtle B. Chapman, maid at the Lodge, November 17, and Robert B. Taylor, plant engineer in Mechanical Operations and Maintenance, November 22, were the celebrants.



Myrtle Chapman Robert B. Taylor
DON'T FORGET! Housing Referendum election, City of Williamsburg, December 2.

Ophelia M. Motley

The CW NEWS joins all employees in extending sympathy to the family of Ophelia M. Motley, who died unexpectedly Wednesday, November 5.

Miss Motley had been employed as head pantrywoman at the Williamsburg Lodge since September 15, 1969.

Survivors include her mother, Mrs. Celestia Motley of Danville, Va., four brothers and two sisters.

COLONIAL WILLIAMSBURG NEWS
Being an Account of that Place and the Men and Women who work there. Published by Colonial Williamsburg at Williamsburg, Virginia.

News office: Ext. 6227
Circulation: Ext. 6228

EDITOR
Richard W. Talley
MANAGING EDITOR
Laurie Brasfield

Social security

If you want a statement of the amount of earnings recorded in your social security account, it's easy to get. Simply pick up a postcard form in the Personnel Relations office.

Colonial Williamsburg News
Drawer C
Williamsburg, Va. 23185
Correction Requested



U. S. Postage
Williamsburg, Va.
PAID
Permit No. 7
Non-Profit Org.