

# COLONIAL WILLIAMSBURG NEWS

Volume 22, Number 1

Williamsburg, Virginia

June 25, 1968

## Summer Exhibition At AARFAC Opened Here On June 23

"By Popular Demand - Folk Art From The Collection" will be the summer exhibition at AARFAC. The new show opened on June 23 and will continue until September 15.

The show features works which over the years have become the favorites in the Collection. Baby in Red Chair, artist unknown; Boy with Finch, and Girl in Green, both attributed to John Brewster; Poestenkill, New York: Summer, and Poestenkill, New York: Winter, both by Joseph H. Hidley; Deborah Glen, artist unknown; and carvings by Wilhelm Schummel are among the items to be included.

The Collection has one of the largest and most varied groups of paintings by the Quaker artist, Edward Hicks, and these will be on display together with a portrait of Hicks painted by his cousin, Thomas Hicks. Leedom Farm, The Residence of David Twining -- 1787, and several versions of the Peaceable Kingdom composition will not be seen together again for several years, since many of the Hicks paintings are scheduled to travel on extended loan.

Portraits of children rank high among the preferred works in the Collection, and Joseph Whiting Stock's full length portraits of William Howard Smith and his sister, Mary Jane, will be shown with other favorites.

A recent addition to the Collection is View of Henry Z. Van Reed's Farm, Paper Mill and Surroundings, by Charles C. Hofmann. Hofmann is known for his small group of landscapes depicting Pennsylvania almshouses and their surroundings. This work is one of his few landscapes of another subject. The painting also

### Exhibition Buildings Open July 1

The CW NEWS wishes to announce to all employees that Monday, July 1, marks the official public opening of CW's five additional exhibition buildings.

The newly opened buildings will include the Peyton Randolph House; the James Geddy House, Silversmith Shop, and Foundry; Wetherburn's Tavern; McKenzie's Apothecary Shop; and the Sir Christopher Wren Building of the College of William and Mary.

Employees and their families may visit these buildings on or after July 1. Admittance will be granted upon presentation of an employee pass.

serves as a preview of the Collection's Fall Show, October 1 to December 8, which will be the first definitive exhibition of Hofmann's work and will include a number of previously unknown works.

In an effort to illustrate the development and consistencies of the style of individual artists, groups of paintings by Erastus Salisbury Field, William Jennys, Jacob Maentel, and Ammi Phillips will be presented with biographical information about the artists.

Over one hundred and fifty works will be included in the show, in order to provide visitors with as complete a view of American folk art as possible.

As a tribute to this election year, the Collection will display its politically oriented works, including a life-sized wooden figure of Lincoln, a Polk-Dallas campaign banner, and many works relating to the life of George Washington.

## CW Archaeology Film Now Underway Here

Filming began here June 17 on a new motion picture dealing with archaeology.

The interpretive production, entitled "Doorway to the Past" will be filmed in and around the Historic Area. The shooting schedule will run through July 19.

Ivor Noel Hume, director of CW's Archaeology Department, wrote the script and is serving as director of the film. Art Smith, director of CW's Audiovisual Department, is the film's producer.

"Doorway to the Past" will depict the type of archaeological work upon which the restoration of eighteenth-century Williamsburg is based. The film also will employ a plot and flashback technique to convey the meaning and importance of archaeology.

Thomas Jefferson's pioneering archaeological efforts and the work of the Virginia Society for the Promotion of Useful Knowledge in colonial times will be dramatized in the film.

A total of 15 professional actors and actresses from New York have been engaged for speaking roles. A number of local persons will serve as extras.

## Hospitalization Benefits Increased; No Rise In Employee Premiums

Four major improvements in CW's Hospitalization and Major Medical Insurance Plan will go into effect on July 1 without any increase in premium cost to employees. The Major Medical maximum and daily room and board benefits will increase, reflecting the rise in the cost of hospital care. An increase in the surgical schedule will also be effective July 1.

Under the revised plan, the Major Medical maximum will increase from \$10,000 to \$15,000. Hospital room and board allowance will be increased to \$25.00 from the current \$20.00. The rate for room and board under the Major Medical provision, which is currently \$25.00, will rise to \$30.00 with the revised plan. The surgical schedule will increase to a maximum of \$360.00 from the present \$250.00 maximum.

This marks the first time that CW's health insurance plan has offered increases in the surgical schedule and in the Major Medical maximum since the plan was introduced in 1958. However, this marks the fourth time in three years that daily room and board benefit rates have been increased. The last increase in rates was effective November 1, 1967.

While hospital and medical charges have continued to rise, judicious use of the CW hospital plan on the part of employees and their dependents has accomplished savings that are passed on to employees in the form of improved benefits.

## Recipients Of CW's Six Grants-In-Aid Announced By Ed Riley

The recipients of the six Colonial Williamsburg Grants - in - Aid were announced recently by Ed Riley, director of CW's Department of Research.

They are James LaVerne Anderson, doing post-doctoral work; Douglas W. Gaton, PhD candidate at the University of Illinois; Ronald M. Gephart, PhD candidate at Northwestern; John Rainbolt, doing post-doctoral work; John Thompson, PhD candidate at Southampton University, England; and Marvin Y. Whiting, PhD candidate at Union Theological Seminary and Columbia University.

Most of these men will be doing research in Williamsburg at various times during the summer months.



Foster Studio

## J. Harvie Wilkinson Named To CW Boards

The appointment of Richmond banker and civic leader J. Harvie Wilkinson, Jr., to the boards of Colonial Williamsburg has been announced by the chairman of the boards, Gov. Winthrop Rockefeller of Arkansas.

Wilkinson will serve as a trustee of Colonial Williamsburg, Inc., and as a director of Williamsburg Restoration, Inc.

Currently chairman of the board of State-Planters Bank of Commerce and Trusts, and president of United Virginia Bankshares, Inc., Wilkinson has had a long and distinguished career in banking and has served his community, his state, and his country in a multitude of civic activities.

A native of Richmond, he is a graduate of the University of Virginia and of Rutgers University Graduate School of Banking, and is the author of "Investment Policies for Commercial Banks," published by Harper Brothers in 1938. He joined State-Planters in 1929, became its president in 1958, and was appointed to his present position as chairman of the board in 1963. During World War II, he served 3 1/2 years with the Special Financial Services Division of the U. S. Army and on leaving military service in December, 1945, had attained the rank of lieutenant colonel.

Wilkinson is listed in "Who's Who in America," and is a member of the industrial development and education committees of the Virginia State Chamber of Commerce as well as many civic and service organizations. He also serves on the boards of directors of more than a dozen companies, among them Philip Morris, Inc., Richmond Hotels, Inc., Richmond Newspapers, Inc., and Garfinckel, Brooks Brothers, Miller and Rhoads, Inc. He is on the board of  
(continued on page 3)

CRAFT SHOPS - Helen Vandermark

CLAIRE URBANSKY spent a wonderful vacation in Miami. In May, PHIL HAWK and LEW LeCOMPTE traveled to Chicago to demonstrate their crafts at the Craft House at Colby's. JOE GRACE attended the 1968 convention of the Virginia Horological Association in Richmond.

We wish our best to DANNY BLACK and Ethel Jones Black on their recent marriage. Our good wishes also go to newly-weds ROSEMARY and George FAUERBACH.

We wish Dee Ide and Guil the very best of luck as they return to Delaware where he will attend the University of Delaware in the fall. We also said good-bye to Bob McGregor and wish him well in his new job.

Welcome to LINDSAY GRIGSBY, apprentice gunsmith, NANCY PETERS, interpreter in the Golden Ball, BARBARA JONES, interpreter in the Geddy Shop, MARGARET McGLYNN, secretary in the Fife & Drum section, and also to the many college students who will be helping us out in the shops during the busy, busy summer.

We were sorry to bid farewell to John Jenkins who worked for several years as a regular interpreter in the Golden Ball and on a casual basis for the last two years. Welcome back to CHARLES ROWLAND who has returned to the Golden Ball on a casual basis.

ARCHAEOLOGY - Margaret Williams

Welcome back to our summer lab assistants, TRUDY HARWOOD and MERRY ABBITT. We also welcome our seasonal archaeological crew, DANIEL LOUDEN, THOMAS BANKS and DOUGLAS JOHNSON, as well as the new excavators, EDWARD RILEY, JR. and CLYDE R. KNIGHT.

ARCHITECTURE - Dru Warr

FRED BELDEN is on a two-week military leave, and is serving his country at the Pentagon. GERRY FINN traveled to State College, Pa., to bring his daughter to Williamsburg for the summer. His nephew is also visiting for the summer. MILDRED KIRBY recently spent a few days in New York City. She enjoyed the sights and attended plays every day. JIM and PEG WAITE enjoyed a visit recently from Jim's parents of Ypsilanti, Mich.

DON PARKER's son, Randy, graduated from James Blair with Honors, and won the Victory Club's first annual award for excellence in athletics.

INFORMATION CENTER - Pauline Valentine

CHARLOTTE FARMER, your reporter, is on a leave of absence during June, preparing for the forthcoming marriage of her daughter, Kathleen, to Hunter Vermillion on June 29.

A hearty welcome back to our summer staff - VANDI POTTS, EDITH POTTS, MARGARET O'NEAL, SUE MILLER and CAROL ROLLER. Welcome also to newcomers - SHERRIE EDWARDS, JACKIE BUIE, KITTY TINKHAM, KATHY THEIL, ANN MARTIN, DEANE deMATTEO, JENNIE AERNI, and BARBARA BRUCE.

LODGE HOUSEKEEPING - Lola Larson

LOLA MOORE attended the Executive Housekeepers meeting recently at the William Byrd Hotel in Richmond. A past chairman of the organization, Lola will be installing new officers of the Old Dominion Chapter.

Welcomes go to several new employees - JOYCE CROSBY, ODESSA WARE, ELLA SCOTT, BRENDA WILLIAMS, VIRGINIA GREY, and AMY JONES.

HAZEL RUTLEY spent part of her vacation in Richmond with her husband who is a patient in McGuire Hospital. STANLEY SUTHERLIN and HELEN TROWER also enjoyed vacations this month. NANNIE MORGAN has returned from vacationing with her family in Charlotte and Forrest City, N. C. MAE SHELTON recently visited her sister in Chase City, Md. CORAL ROGERS and her sister from Florida spent a few days with their brother in Leesburg, Va. Your reporter and husband will spend their vacation in Asheville, N. C., and will also tour parts of Tennessee.

MAXINE LOCKARD's brother and family are returning this month after a three-year stay in Cuba.

ADDRESSOGRAPH-MIMEO-SUPPLY - Anna Richardson

We are glad to welcome MARY HUGHES as a full-time employee since her graduation from James Blair this June. We hope that DANA GABRIEL will be better and back with us soon. Your reporter and her family attended the graduation of their oldest son from R.P.I. in Richmond on June 9.

PRESENTATION - Eugenia Corrigan

We are certainly going to miss DOUG SMITH and his staff who moved from the Information Center to their new quarters in the Davidson Shop during the first week in June.

EDNA PENNELL enjoyed a week's vacation the last of May visiting with her sister in Washington.

OFFICE MANAGER - Editor

Our sympathy goes to HERMAN TAYLOR whose wife died June 12 in Riverside Hospital after a long illness.

COMMISSARY - Hazel Majette

RAY and Margery KIEF are vacationing in Florida.

We welcome JAMES HOWARD, RICHARD HATCHETT and NORMAN STACK to the Commissary staff. We are happy to have LETTIE WALLACE, WILLIAM WALLACE, ARTHUR COPELAND and ALBERT DUNLAP back on the job after being out sick.

Your reporter had an eye operation and is now back at work. MARY EVANS did a fine job and we are looking forward to her helping us again.

PURCHASING AND ESTIMATING - Connie Cheatham

We were sorry to see Susan Page leave on May 24, but we're sure she is happy to be back home in Rocky Mount. Both TOM LaHAYE and LEON TUCKER have recently taken off for two weeks for military duty. Tom left June 2 for Washington, D. C., and Leon left June 7 for Pennsylvania.

LESTER LEWIS recently traveled to Greensboro, N. C., where his son will be attending summer school at Bennett College. ED WATKINS has returned after a pleasant vacation in Tennessee visiting his mother.

TOMMY and Josephine BRUMMER have returned from a recent train tour of the States and Mexico. Tommy also journeyed to New York for a few days to see his father who is in the hospital there. We wish him a speedy recovery.

TOUR OFFICE - Ada Townsend

We are happy to have EUNICE BARRON, JOYCE MYERS, PEGGY BRITTON and JUNE SHIELDS off the sick list and back with us again. A warm welcome to SYLVIA COOKE, who has returned from a leave of absence.

JANE GOODALE and family spent a week at Nags Head. JEAN REDPATH is off for a vacation to Mountain Lake. We all envy HELENE PITTMAN and her forthcoming trip to Europe.

We bid farewell to Bill Davis, Madeline Billy, Linda Cooke, Diane Barocco and Richard Tillberg who graduated from William and Mary. Our congratulations and best wishes go with them.

AUDIOVISUAL - Editor

Our sympathy is extended to JANE ISELEY whose mother died June 11 in Burlington, North Carolina.

COLLECTIONS - Susie Gibson

The Department of Collections has only "sad" news to report this time. We have had several departures since the last report. TRUDY SCHALK is now assistant to RAN RUFFIN in Special Events. Melinda Hudgins is going back to teaching in the fall and is working on her Masters in Education this summer. Howard Wiseman returns to New Jersey after a year with us as a participant in the Humanities program sponsored by the Federal Government. We all wish them well in their new endeavors.

Finally, we lost "John" and "Eleanor" - two of the three goldfish in Peyton Randolph's parlor.

LODGE BELL FORCE - Alton Wallace

DONALD McGRUFF is leaving for two weeks of Army Reserve training. We all welcome MARSHALL ASHLOCK back to the bell force after being assigned to the Conference Center.

We are happy to report that RALPH CARTER's wife is recovering nicely after a fall on ice earlier in the year.

MERCHANDISING - Lillian Babb

Frances Schwarz was honored at a farewell party given by CATHARINE DORRIER and employees at the Craft House, as well as HAROLD SPARKS, FRANK CROSS, and BOB SPURGEON. Our best wishes go with Frances whom we shall miss greatly.

MARGARET MEYERS and her family have returned from Akron, Ohio, where they visited their parents who are convalescing from recent illnesses. LUCILLE ROWE of the Lodge Gift Shop spent a pleasant vacation in New York. RUTH CODDINGTON has returned from Vanden Air Force Base in California after a stay with Lt. and Mrs. J. N. Barker and family. Mrs. Barker is Ruth's daughter.

A warm welcome to EVELYN PETRO and MARGARET WALTON, who are employed at the Lodge Gift Shop. We are also happy to welcome CAROLYN PRITCHARD and MARGE PONS at the Craft House.

ANNE COLES is visiting her sister in Chicago this week. She will also visit the new Craft Shop which opened recently at Colbys. KATIE BRAGG will visit her son Robert and family in Philadelphia.

Ann Brinkley became Mrs. Charles Stuber at St. Bedes Catholic Church on June 6. Ann was formerly employed in the office at the Craft House.

Recent guests of your reporter were the Ralph Krauses from St. Louis, Missouri and Mesdames Lewis and Wetherall from Middleburg, Va.

KING'S ARMS TAVERN - Bertha Casselle

We welcome back CALVIN ADKINS who has been working at the Lodge. We are glad to have MATTIE HUNDLEY back at work after being out sick.

MAE BROWN enjoyed having her niece from New York with her for a visit early last month.

Your reporter enjoyed attending her daughter's graduation at Nashville, Tenn., on June 9.

CAFETERIA - Editor

Our sympathy goes to SAMUEL THOMAS whose father died June 3 in Sanford, North Carolina.

INN HOUSEKEEPING - Mary Redcross

It's vacation time for many of our employees. DELORIS WALKER and her husband went to North Carolina. LOUISE CHRISTIAN traveled to Florida

(continued on page 4)



**Albert Louer Joins CW As Staff Writer In Public Relations**

Albert Osborn Louer joined Colonial Williamsburg on June 24 as a staff writer in CW's Press Bureau according to Hugh DeSamper, director of the Press Bureau.

Louer is a native of Highland Park, Ill. Before coming to CW, he was an instructor in history and English at Lake Forest Academy, Lake Forest, Ill. In addition to his teaching duties, he served as director of the school's information service and as an assistant in the office of development. He also has been a general assignment reporter with WRVA Radio News in Richmond, Virginia.

He is a graduate of the College of William and Mary where he was president of Pi Delta Epsilon, the honorary journalism fraternity. He holds an AB degree in history and has completed the Publicity Club of Chicago's Practical Course in Public Relations. He has traveled in Europe, spending most of his time in London where he was employed and did volunteer social service work.

He succeeds Helen Turvey, staff writer, who leaves in July to make her home in Boston, where her husband will continue his medical studies.



**Peyton Massie Tops 20th Anniversary Here**

Peyton L. Massie, maintenance serviceman in the Division of Architecture, Construction and Maintenance, celebrated his twentieth anniversary of service with CW on June 1.

Peyton joined the organization in 1948 as a maintenance plumber in the former Construction and Maintenance Department. He has been a maintenance serviceman since January of 1954.

Peyton and his wife, Betsy, have one married daughter. His hobbies include golf and fishing.



**Muriel Spencer Retires After 27 Years Here**

Muriel Spencer, hostess in CW's Division of Presentation, retired on June 1 after more than twenty-seven years of service here.

Muriel began her career with CW in 1935 as a hostess. In September of 1936, when the escort service was organized, she was named supervisor of escorts and served in that capacity until 1940 when she returned to hostessing.

She was granted a leave of absence during World War II, returning to CW in 1943 as a hostess. In 1947 she was named assistant to the supervisor of hostesses, and worked in that capacity for more than six years. During the following years as a hostess Muriel also handled many special assignments for the Garden Symposium, the Antiques Forum, and for special home tours.

A native of Williamsburg, Muriel is the mother of CWer Ed Spencer, director of Presentation Services. Her sister, Grace Peachy, who was also a hostess, retired from CW in 1964 after fourteen years of service.

Muriel is a member of the Methodist Church and of the A.P.V.A. In her spare time she enjoys gourmet cooking, gardening and reading.



**Edwards Named CW Training Coordinator In Personnel Relations**

Gary Lee Roy Edwards will join Colonial Williamsburg early in July as training coordinator in the Division of Personnel Relations. The appointment was announced recently by Dick Talley, CW vice president and director of that division.

Edwards is a native of Martinsburg, West Virginia. Before coming to CW he worked as assistant principal of Clark County High School in Berryville, Va.

He is a graduate of Shepherd College where he acquired an AB degree in secondary education. While in college, he was active in a variety of sports and campus activities. He has also done post-graduate work in guidance counseling at the College of William and Mary and at the University of West Virginia.

Gary and his wife, the former Mary Jane Knee, have two children. He succeeds Molly Converse, CW training coordinator, who left the organization late in May.



**Ed Kendrew Retires From CW After Thirty-Eight Years Of Service**

Ed Kendrew, CW's senior vice president, will retire from Colonial Williamsburg on July 1 after more than thirty-eight years of service.

Ed's first glimpses of Williamsburg came in May, 1928, when he came here as a young draftsman with the Boston architectural firm of Perry, Shaw and Hepburn. "It was a charming place in spite of signs of age and effects of weathering over the years. There were an amazing number of original buildings still standing and I realized at once what a great opportunity the restoration of this city presented," Ed remembers.

Later, in 1930, Ed began his long career with CW as head draftsman in the Architect's Office. He recalls that the thought of restoring an 18th century city then seemed staggering. "But, there was a great deal of enthusiasm and a desire on the part of everyone involved to get the project underway." He added, "I don't think the restoration could have possibly achieved the success it now has without the dedication and willingness of those people to do a little more than just their regular jobs."

In 1934, when the first phase of the restoration work was completed, Ed was named resident architect and head of the Architectural Department.

Ed's memories of those years include particularly his close association with the late John D. Rockefeller, Jr., CW's benefactor. "Mr. Rockefeller always took a meticulous interest in the restoration. His concern was with what would be the most lasting as opposed to what merely gave an immediate effect. He once said, 'I want to make sure we haven't done a single thing that will make it difficult for those who come after us.'"

In March, 1943, Ed was elected vice president of CWI and WRI and appointed director of Architecture, Construction and Maintenance. In November, 1957, he was elected senior vice president and continued as director of AC&M until 1964 when

he joined the Office of the President to concentrate on long range planning.

Ed and his wife, Melinda, have two married daughters and six grandchildren. He has served as a vestryman of Bruton Parish Church, is a fellow of the American Institute of Architects, and served as a member and chairman of the State Art Commission for twenty-two years.

Ed is also a member and past chairman of the Williamsburg City Planning Commission, a past president and member of the Williamsburg Rotary Club, and is a member of the National Trust for Historic Preservation, and many other professional societies.

When asked about the future and what it may hold for Colonial Williamsburg, Ed had these remarks: "I believe the excitement of restoring Williamsburg will continue, for there are many challenges to the staff today and a most interesting program of work yet to be accomplished. The people who come here to work will catch the spirit of Williamsburg and its great opportunities. There is still much to be learned and it will take a special kind of dedication to solve the story of all that happened here in the 18th century."

Although he has made no definite commitments, Ed will be busy after July 1. One of the many things he wishes to do is to continue research in architectural history and to record his thoughts on Colonial Architecture. Traveling, boating and fishing at his cottage in Gloucester, and frequent visits to his family home in New Hampshire are among Ed's future plans after retirement.

**Wilkinson, (Cont.)**

visitors of the University of Virginia, and serves on the boards of trustees of the Brookings Institution, Hollins College, Church Schools in the Diocese of Virginia, and the Richmond Memorial Hospital.



The entire department posed for this picture which was taken in front of the Davidson Shop after the move. Front row, left to right, are Helen Hudson, Judith Taft, Elizabeth Callis, and Dick Carter. Back row, left to right, are Doug Smith, Jordan Westenhaver, Lucy Carter, and Shirley Low.

### Department Of Exhibition Buildings Moves To Davidson Shop

CWers who want to visit the Department of Exhibition Buildings this summer will find the happy group in a new location - the Davidson Shop on the Duke of Gloucester Street.

The offices were moved from their former location in the Information Center during the first weeks of June.

Everyone seems quite pleased in his new surroundings and is enjoying the advantage of lots of storage space. Another favorable aspect of the move to the Historic Area is that the department is now within convenient walking distance for CW hostesses.

### Frances Schwarz Retires After 17 Years With CW

Frances Schwarz, office assistant to the manager of the Craft House, retired on June 1 after more than seventeen years of service with Colonial Williamsburg.

Frances first worked for CW from 1940 to 1942 as a casual hostess. In 1950, she was re-employed as a secretary at the Craft House. She was named to her most recent position there as office assistant to the manager in 1957.

A native of Washington, D. C., Frances has a married son, a married daughter, and four grandchildren. She is a member of Bruton Parish Church and enjoys sewing in her spare time.

### Four CWers Celebrate Service Anniversaries

Four employees celebrated tenth anniversaries of service with CW during the month of June.

Marking ten years of service and pictured below are Caroline Thompson, manager of the Cascades Gift Shop, June 6; Floyd Sherman Johnson, assistant stock room manager at the Craft House, June 24; and Hortense King, inspectress at the Motor House, June 12.

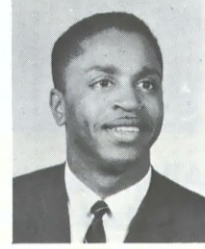
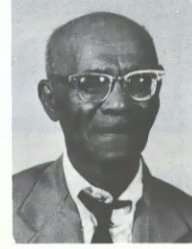


Also celebrating her tenth year here but not pictured is Elizabeth Sivills, administrative secretary in the President's Office, June 4.

### CWers Celebrate 15 Years Of Service

Five CW employees marked fifteen years of service here during the month of June.

Celebrating fifteen years of service and pictured below are Peter D. Brown, dishroom attendant at the Lodge, June 9; Wilbert Jones, projectionist in the Department of Mechanical Operations and Maintenance, June 15.



Also celebrating their fifteenth year with CW but not pictured here are Thomas R. Hazelwood, maintenance serviceman in the Department of Mechanical Operations and Maintenance, June 8; Dorothy Cheeseman, pantrywoman at the Lodge, June 13; and Alice Reitz, manager of the Tour Office, June 29.

### Lola Larson Retires After 21 Years Here

Lola Larson, inspectress at the Lodge, will retire on July 1 after twenty-one years of service with Colonial Williamsburg.

Lola began her career with CW in 1947 as a seamstress at the Lodge. In 1949 she was named an inspectress. For the past five years Lola has been responsible for the new West Wing of the Lodge, where she inspects 56 rooms.

Lola and her husband, Clarence, have two daughters. Her sister, Bonnie Holland, works for CW as custodial supervisor in the Building Maintenance Department.

Lola is a member of the Presbyterian Church and of the Woman's Club. Her special interests include traveling and sewing.

#### Charles L. Thompson

The CW NEWS joins all employees in extending sympathy to the family of Charles L. Thompson who died June 15 at his home in Norge after a long illness.

Charlie had worked for Colonial Williamsburg for more than seventeen years, first as a field engineer and, since 1964, as a warehouse clerk in the Division of Architecture, Construction and Maintenance.

Survivors include his wife, Lucy, two daughters, three brothers, a sister and six grandchildren.

#### William R. Tudor

The CW NEWS joins all employees in extending sympathy to the family of William R. Tudor who died June 12 in Williamsburg.

William had been a garden foreman in the old Construction and Maintenance Division for seventeen years, retiring in May of 1949. His wife, Maude, who was also a retired CW employee, died in 1965.

Survivors include two daughters, a son, a sister, four grandchildren and seven great grandchildren. One of his daughters, Louise T. Briggs, works for CW as manager of Merchandising's Information Center.

#### Proud Parents

Philip Lee Moore, painter in Building Maintenance, a son, Richard Montgomery, born April 29, 8 lbs., 13 oz.

#### COLONIAL WILLIAMSBURG NEWS

Being an Account of that Place and the Men and Women who work there. Published by Colonial Williamsburg at Williamsburg, Virginia.

News office: Ext. 6227  
Circulation: Ext. 6228

#### EDITOR

Richard W. Talley  
MANAGING EDITOR  
Carolyn J. Weekley  
Portraits by C. G. Kagey

U. S. Postage  
Williamsburg, Va.  
PAID  
Permit No. 7  
Non-Profit Org.

Colonial Williamsburg News  
Drawer C  
Williamsburg, Va., 23185  
Return Requested

#### HEAR YE!, CONT.

and NINA ANDERSON visited relatives in Iowa. Other recent vacationers include KAY JONES, BESSIE MITCHELL, BARBARA JORDAN, CLEMENTINE JACKSON, LOUISE HICKMAN, EUNICE BASSETT, and EVELYN RANDOLPH.

We welcome ANDERSON SMITH and LOUISE REDCROSS to our department. We are happy to have WILLIAM KNIGHT with us again after being out sick for several months.