



# Colonial Williamsburg News

INFORMATION ABOUT COLONIAL WILLIAMSBURG PEOPLE AND PROGRAMS VOLUME 54, NO. 45 NOVEMBER 6, 2001

## Wallace Museum hosts rare Scottish maps

Colonial Williamsburg will host "At the Edge of the World: Mapping Scotland," a loan exhibition from an anonymous donor on display at the DeWitt Wallace Decorative Arts Museum Nov. 30, 2001 to Dec. 1, 2002. The exhibition will feature maps, charts and atlases that illustrate a fascinating blend of art, science and social history with some of the earliest efforts at creating printed maps of northern Britain, including those from the 16th century when Scotland was on the edge of the known world.

"Mapping Scotland" will include an exploration of early maps and urban views of Britain and Scotland, nautical charts, elaborate coffee table atlases and other cartographic miscellany. Significantly, this is only the second such display of Scottish maps in the United States, the first having taken place in 1995 at the John Carter Brown Library in Providence, R.I. Scottish map aficionados will note that the exhibition's Nov. 30 opening date coincides with St. Andrew's Day honoring Scotland's patron saint.

Exhibition highlights will include: "The Woolly Mammoth Map," a 1522 interpretation of Ptolemy's second-century world map by Martin Waldseemüller; a 1700 map by Pierre Mortier depicting Scotland's only overseas colony on the Darien Peninsula of what is now Panama; English historian John Speed's 1611 work, "History of Great Britaine," with its imaginative drawings of

the early Scots with painted and tattooed bodies; and Joseph Thomson's milestone "Atlas of Scotland." The exhibition also will include a complete set of early 18th-century charts by John Adair, the first Scottish marine cartographer; a set of charts of the west coast of Scotland by Murdoch Mackenzie, who attempted the first scientific mapping of Scottish waters; and the only Spanish edition of Blaeu's volume on Scotland and Ireland.

"We've tried to show how attitudes toward Scotland have changed over time, from a relatively unknown outpost at the edge of civilization to the most mapped country in Europe," said John Hyman, Colonial Williamsburg guest curator. "I'm especially interested in the northern islands, which were safe havens and fishing stations for ships trading with North America. They are critical to any study of Scottish migration to this country."

Hyman currently is writing a monograph on Scottish maps that will supplement information in the exhibition.

"Colonial Williamsburg is lucky to be able to call on specialists like John Hyman to mount unusual, thought-provoking exhibitions such as this," said Colonial Williamsburg Chief Curator and Vice President of Collections and Museums Ronald L. Hurst. "This is a fascinating, visual display that tells history with many unexpected, contemporary insights."

### Under construction

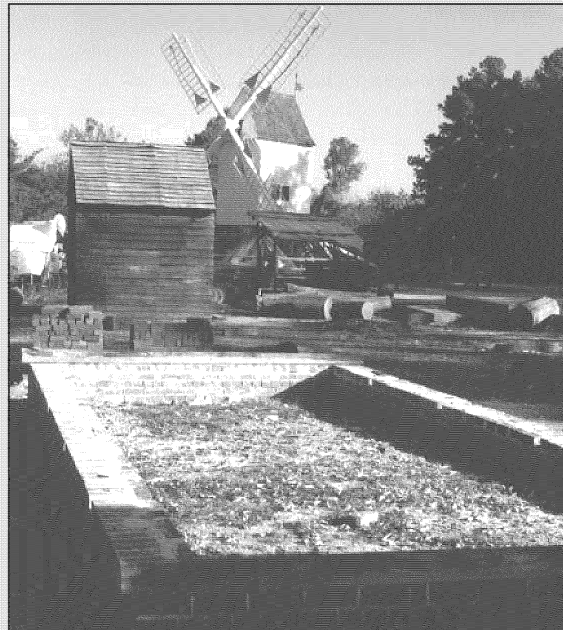


Photo by Tim Andrews

The new foundation for a storage building is ready for construction to begin in February 18th-century style at the Peyton Randolph property just north of the new kitchen. The storage shed is the next structure in a series of out-buildings scheduled for reconstruction at the property. Historic trades carpenters have spent the past months preparing lumber for the project.

### Brick kiln site of annual burning of the bricks



Photo by Jim Bradley

The brick kiln staff prepares to toss more logs on the fiery coals in a kiln tunnel during the annual burning of the bricks last month. (From left) Roger Hobense passes a log to supervisor Christina Trowbridge. Bill Eberle prepares to stoke the fire. Stacy Hasselbacher takes another log from the stack and gets ready to hand it off. The kiln burn is the final step in the process that begins in the spring with molding the bricks. This year's burn will produce 16,000 bricks for use in restoration and reconstruction projects.

## Janet Kane accepts position at Hard Rock Café International

Janet D. Kane, vice president of products, has resigned from Colonial Williamsburg to accept the position of vice president of retail and merchandising for Hard Rock Café International Inc. A farewell reception for Kane was held Wednesday, Oct. 31 at the Kimball Theatre.

"This is a wonderful opportunity for Janet which will allow her and her family to live near parents and grandparents," said Ned Dunn, president of Colonial Williamsburg Company. "Since joining Colonial Williamsburg in 1999, Janet has devoted her energies to expanding Colonial Williamsburg's markets. Please join me in wishing Janet much success in her new position."

Among Kane's accomplishments at Colonial Williamsburg were: the creation of the new WILLIAMSBURG Pure Simple Today store; launching of the products' division e-commerce web site, [www.williamsburg-marketplace.com](http://www.williamsburg-marketplace.com); development of two new retail shops at the expanded Visitor Center; renovation of the Craft House at the Williamsburg Inn; and conceptualization and design of the new Regency Gift Shop at the Inn. Additionally, she oversaw management of the company's catalog business and licensing program. Last month, she was named one of the "Top 100 Marketers of 2001" by Advertising Age magazine.

"I am proud of what I have accomplished in the two short years I have served the foundation, and I will always regard this time as positive and rewarding," Kane

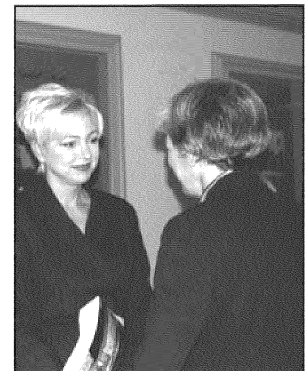


Photo by Sophia Hart

Janet Kane (left) talks with Kathy Whitehead, vice president of finance, during the farewell reception Wednesday, Oct. 31 at the Kimball Theatre.

said. "I will miss my products team and foundation colleagues."

Based in Orlando, Fla., hard Rock Café International is a global chain of more than 100 Hard Rock Cafes in 45 countries that feature music-related products and programs, a music label, a chain of hotels and casinos and live music venues.

Kane, her husband, Chuck, and sons Paul and Brett will relocate to the Orlando area at the end of the year.



Photo by Penna Rogers

The American Red Cross recently honored three Colonial Williamsburg security officers—Sgt. Carlos Parker, Cpl. John Wicker and Officer Jeff Blaisdell—for helping to save the life of a visitor to Colonial Williamsburg. (Photo above) Cindy Timberlake of the Colonial Virginia Chapter of the American Red Cross and Jack Wilson, chairman of the board of the American Red Cross (right), present Wicker with a certificate of recognition.

## American Red Cross honors foundation security officers

The American Red Cross (ARC) recently recognized three officers from Colonial Williamsburg's security, safety and transportation department for their efforts that saved the life of a visitor in the Historic Area.

On May 5, Robert Smith of Washington, D.C., experienced signs and symptoms of a cardiac arrest near the Powder Magazine. Officer Jeff Blaisdell, Cpl. John Wicker and Sgt. Carlos Parker responded to the emergency call and administered CPR. "It was their instantaneous actions coupled with their excellent training that made the difference in a successful outcome where Mr. Smith was able to leave the hospital without irreversible consequences," said Eric H. Stoll, emergency medical services coordinator for the City of Williamsburg's Fire Department.

Pat Benjamin, front desk manager of the

Williamsburg Lodge, was impressed with the respect the officers showed the family during the treatment of the victim. "I spent most of the evening with Mrs. Smith and, as we were leaving the hospital, she told me she had never been in a place like Colonial Williamsburg—the people are so wonderful, you can feel that they really care," Benjamin wrote. "I've always believed that one person can make a difference—and your officers proved that. Mrs. Smith may not remember their names or their faces but she always will remember their kindness and their willingness to do whatever it took. Please let Officers Parker, Wicker and Blaisdell know that they did make a difference in someone's life and, whatever happens, Mrs. Smith will always feel they gave 100 percent of themselves—and that will bring her peace."

## "Whoop & Holler" lecture follows musical history of Virginia banjo

What musical instrument has been played by slaves, showmen, circus performers, Civil War soldiers, cowboys, coal miners, college students, jazz musicians and country music singers?

Carson Hudson of Colonial Williamsburg's program development department will discuss the history of the Virginia banjo from the 18th century to the present during his lecture, "Whoop &

Holler! The Changing Sound of the Banjo from Plantation to Appalachia," 4 p.m. Wednesday, Nov. 14 in the Hennage Auditorium of the DeWitt Wallace Decorative Arts Museum.

The program will include a sampling of musical styles performed on reproduction banjos.

The lecture is free to Colonial Williamsburg employees.

### A side show of benefits information



Photo by Bonnie Gilley

Colonial Williamsburg's human resources department sponsored a Carnival of Care Fair for employees Wednesday, Oct. 24 in the Fifes and Drums Building. The fair focused on health issues and benefits information. Free health checks included cholesterol screenings, blood pressure checks, vision and hearing tests, skin cancer detection and bone density testing for at-risk employees. (Photo above) Williamsburg's Police Officer Dennis Baines offers security tips to employees.

## Thanksgiving Sale

### Desserts

|  |        |
|--|--------|
| Pecan Pie                                    | \$12   |
| Campbell's Rum Cream Pie                     | \$9.50 |
| Pumpkin or Sweet Potato Pie                  | \$9.50 |
| Strawberry Mousse Pie                        | \$12   |
| 10-inch Pumpkin or Cranberry Cheesecake      | \$18   |
| Blueberry Crisp                              | \$12   |
| 10-inch Williamsburg Chocolate Ganache Torte | \$25   |
| Gingerbread Loaf with Lemon Glaze            | \$7    |
| 20-ounce Loaf White Chocolate Pound Cake     | \$6    |
| Chocolate Cobbler                            | \$12   |
| One pint Chowning's Crock Cheese Spread      | \$6    |
| Quiche Lorraine                              | \$10   |
| Seafood Quiche                               | \$12   |
| Gingerbread House Kit                        | \$30   |

### Breads

|  |        |
|--|--------|
| One dozen Soft Rolls   | \$3    |
| One dozen Pretzel Rolls  | \$3    |
| One dozen Sour Dough Rolls                                     | \$3    |
| Half dozen Cranberry/Orange Muffins                            | \$3    |
| Half dozen Sweet Potato Muffins                                | \$3    |
| Half dozen Apple Cheddar Muffins                               | \$3    |
| One dozen Medium Biscuits                                      | \$2.50 |
| One dozen Assorted Danish (apple, cheese, raspberry and lemon) | \$8    |

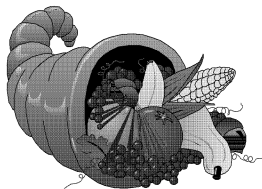
|                        |     |
|------------------------|-----|
| Poppy Seed Danish Ring | \$8 |
| Caraway Loaf Round     | \$3 |
| Sally Lunn Round Bread | \$3 |
| White Mountain Loaf    | \$5 |

### Soups and Meats

|  |         |
|--|---------|
| Cooked Sugar-Cured Pit Ham (7.5 pound average) | \$21.50 |
| Two quarts Meatless Brunswick Stew             | \$6     |
| Two quarts King's Arms Tavern Peanut Soup      | \$6     |
| Two quarts Seafood Chowder                     | \$8.50  |
| Two quarts Cascades Cheddar Cheese Soup        | \$7     |
| One pound Beef Tenderloin Tips                 | \$5.50  |
| One pound Jumbo Lump Crab Meat                 | \$22.50 |
| Half dozen 1/4-pound Gold Course Hot Dogs      | \$6     |
| Two racks cooked Pork Ribs                     | \$17    |
| One quart Giblet Gravy                         | \$2.50  |
| Two pounds Oyster Dressing                     | \$14    |
| Two pounds Meatballs in Spicy Tomato Sauce     | \$10    |
| Half dozen Country Ham Biscuits                | \$4     |
| Sweet Potato Casserole ready for baking        | \$10    |
| Broccoli Casserole ready for baking            | \$12    |
| Corn Pudding Casserole ready for baking        | \$10    |

### Manager's Special

|                                      |      |
|--------------------------------------|------|
| Five Pound Meatloaf ready for baking | \$15 |
|--------------------------------------|------|



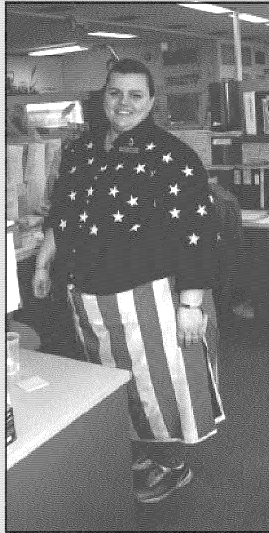
Orders for these items will be accepted through 3 p.m., Friday, Nov. 16 at 8560. You may pick up your order from 11:30 a.m. to 6 p.m. on Tuesday, Nov. 20 at the Colonial Williamsburg Commissary on Lafayette Street by the Laundry. All prices include tax. Payment by cash or check only.

Tricks and treats during Halloween week



Photo by Linda McElroy

Colonial Williamsburg Company-Hospitality Group (CWC-HG) employees celebrated Halloween at several locations. (Photo above) Employees at the Williamsburg Lodge held a pumpkin carving contest. The winners were: first place, Sylvia Bartlett, second row, second from left, Halloween scene; second place, Steve Stevenson, second row, first from left, American flag; and third place, Don Boyce and Alfred Jackson, first row, second from left, Halloween scene. Elsewhere, the Call Center hosted a luncheon Wednesday, Oct. 31. For this "spooktacular" event, Call Center employees held a costume contest and a styrofoam cone decorating contest. (Photos below) This year's contest took on a patriotic theme. Beekah Henning (left) dressed as the American flag and Brandi Moyer donned a Statue of Liberty costume. First place winner for the costume contest was Elizabeth Bolger who wore a dalmatian costume. Marcia Cole took second place as Mimi from the Drew Carey Show. In the cone decorating contest, Marcia Cole submitted the winning entry of a lighthouse and Ramona Randolph entered a spider and web that captured second place. Guest employee judges voted on their favorite costume and cone figure before joining employees in a potluck lunch.



Photos by Penna Rogers

CWC-HG welcomes Bruce Luongo to the HR staff

Bruce Luongo has joined the Colonial Williamsburg Company—Hospitality Group (CWC-HG) staff as an orientation trainer.



Bruce Luongo

A graduate of the College of William and Mary, Luongo began his career with Colonial Williamsburg as a server at Chowning's Tavern in 1979. In 1990, he

was promoted to lead waiter, and in 1999, he relocated to Campbell's tavern as assistant manager. He continues to work at Campbell's on a part-time basis.

Luongo has had extensive experience training tavern employees in TIPS (Training in Intervention Procedures for Services), a program to train servers how to serve alcohol responsibly, and in the history of the taverns. His new position will consist of working with Barbara Ford-Latty, CWC-HG training manager, HR & Quality, on developing orientation training programs.

Chowning's Tavern recognizes employees

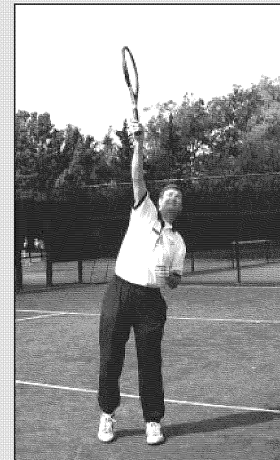
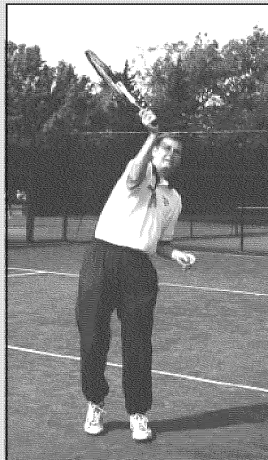


Photo by Linda McElroy

Chowning's Tavern employees were treated to a Chinese dinner from Peking Restaurant Friday, Oct. 12 as a show of appreciation for their hard work. Chowning's is just one of the historic dining taverns that hosts an employee appreciation dinner each quarter. Previous dinners have consisted of pizza, Mexican food and a barbecue. Above, from left to right, Howard Handsome, Lawrence McRay, Keith Faunteroy, Wayne Scott and Harry Mass enjoy the Chinese dinner hosted by tavern management.

Tips from the Pros

Perfecting Your Serve



Photos by Linda McElroy

(Photo left) Hoy Correll, Colonial Williamsburg tennis pro, said a common problem for many tennis players when serving is allowing the ball to drop too low before making contact. The server should make ball contact with the racket arm fully extended in order to get maximum leverage and power. (Photo right) After the toss, visualize hitting the ball on its way up before the ball begins its downward flight. This will force you to stretch for the ball instead of hitting it at a lower contact point.



A Taste of Colonial Williamsburg

Christiana Campbell's Sweet Potato Muffins

- 1/2 cup butter
- 1 1/4 cups sugar
- 2 eggs
- 1 1/4 cups canned sweet potatoes, mashed
- 1 1/2 cups all-purpose flour
- 2 teaspoons baking powder
- 1/4 tsp. salt
- 1 tsp. cinnamon
- 1/4 tsp. nutmeg
- 1 cup milk
- 1/2 cup raisins, chopped
- 1/4 cup pecans or walnuts, chopped

Preheat the oven to 400 degrees F. Grease muffin tins. Cream the butter and sugar. Add the eggs and mix well. Blend in the sweet potatoes. Sift the flour with the baking powder, salt, cinnamon and nutmeg. Add alternately with the milk. Do not over mix. Fold in the nuts and raisins. Fill the greased muffin tins 2/3 full. Bake for 25 minutes.

Note: Sweet potato muffins can be frozen and reheated.

# NOV. 8-NOV. 14

## HAPPENINGS AT COLONIAL WILLIAMSBURG

*(Editor's Note: As the Colonial Williamsburg Foundation celebrates its 75th Anniversary, CW News is highlighting in its calendar some of the important events—past and present—during 2001.)*

### THURSDAY, NOV. 8

#### CWF payday.

**Palace Concert, 7:30 p.m.,** Governor's Palace.

**18th-century Play—Clandestine Marriage, 8 p.m.,** Williamsburg Lodge.

On this date in 1983, a plaque commemorating the former site of the First Baptist Church, one of the first black churches in America, was dedicated during a ceremony near the corner of Nassau and Francis Streets where the church once stood.

### FRIDAY, NOV. 9

**Meet the Curator/Conservator Tour with Carolyn Weekley, 2:30 p.m.,** Abby Aldrich Rockefeller Folk Art Museum. Join Weekley as she acquaints the visitor to major folk art examples collected in the 1930s by Mrs. Abby Aldrich Rockefeller, a pioneer in appreciating both modern art and American folk art.

**Williamsburg's Most Wanted, 7:30 and 9 p.m.,** Capitol.

**Cry Witch, 8 p.m.,** Kimball Theatre.

On this date in 1990, King's Arms Tavern was awarded the 1989 Business Executive's Dining Award by Sales & Marketing Management Magazine, co-sponsor of the award program.

### SATURDAY, NOV. 10

**Dance Our Dearest Diversion, 7 and 8:30 p.m.,** Capitol.

**18th-century Play—Haunted House, 8 p.m.,** Williamsburg Lodge.

On this date in 1954, Her Majesty Queen Elizabeth, Queen Mother of England, became the first member of the Royal British family to visit here.

On this date in 1967, President Lyndon B. Johnson, accompanied by Mrs. Johnson, addressed the Gridiron Club at the Colonial Williamsburg Conference Center.

On this date in 1984, the Grand Duke and Duchess of Luxembourg visited Williamsburg.

### SUNDAY, NOV. 11

**Spellbound, 7 and 8:30 p.m.,** Courthouse.

On this date in 1978, the Crown Princess Sonja of Norway visited Williamsburg.

On this date in 1980, Dr. Luis Lansana Beavogui, prime minister of Guinea, visited Colonial Williamsburg.

On this date in 1993, Robert Wilson and Gordon Wood were elected to the foundation's board of trustees.

### MONDAY, NOV. 12

**Meet the Curator/Conservator Tour with Catherine Anderson, 2:30 p.m.,** Hennessee Auditorium. Explore the museum environment at the DeWitt Wallace Museum through a slide presentation and lecture.

**Military By Night, 7 and 8 p.m.,** Magazine.

**Cry Witch, 8 p.m.,** Kimball Theatre.

On this date in 1977, Carlisle H. Humesline retired as president of Colonial Williamsburg to become chairman of the board of trustees and chief executive officer and Charles Longworth assumed the title of president and chief operating officer of Colonial Williamsburg.

On this date in 1984, the Colonial Williamsburg Board of Trustees approved the formation of a new hotel subsidiary.

On this date in 1983, J. Richardson Dilworth announced his retirement as a Colonial Williamsburg Trustee.

### TUESDAY, NOV. 13

**Remember Me, 7 p.m.,** Hennessee Auditorium.

**Palace Concert, 7:30 p.m.,** Governor's Palace.

On this date in 1995, the Cary Peyton Armistead House moved from its old location near the Capitol to North Henry Street.

### WEDNESDAY, NOV. 14

**Meet the Curator/Conservator Tour with Laura Barry, 2:30 p.m.,** DeWitt Wallace Decorative Arts Museum. Take a closer look at 18th- and 19th-century prints that were used with special optical devices to amuse and instruct viewers.

**Dance, Our Dearest Diversion, 7 and 8:30 p.m.,** Capitol-house of Burgesses.

**Cry Witch, 7:30 and 9 p.m.,** Capitol-Courtside.

**Grand Medley of Entertainments, 8 p.m.,** Kimball Theatre.

**Spending accounts bi-weekly deadline today.** Claims for reimbursement from medical and dependent care spending accounts for CWF employees must be submitted by noon to the compensation and benefits office in the Franklin Street Office Building. Next deadline for CWC employees is Nov. 21.

**Benefits Workshop, 3 p.m.,** Franklin Street Office, Room 147. Answers to benefit questions and assistance with enrollment paperwork.

On this date in 1983, Colonial Williamsburg received a \$1 million gift from the Walter H. Annenberg Fund in Radnor, Pa., for use in the renovation of the Information Center.

### IN THE MUSEUMS...

**At the Abby Aldrich Rockefeller Folk Art Museum:**

**"An Introduction to American Folk Art and Folk Art in American Life"**—The museum's permanent collection of paintings, sculpture, textiles, furniture and a variety of three-dimensional objects such as whirligigs, weather vanes and shop signs. Ongoing exhibit.

**"Quartet of Quilts"**—A delightful quilt exhibition showcasing four unusual pieced quilts made of wool, silk and cotton. Through Jan. 2, 2002.

**At the DeWitt Wallace Decorative Arts Museum:**

**"Artistry and Ingenuity"**—A look at colonial kitchen equipment from an aesthetic and practical viewpoint. Ongoing exhibit.

**"Building a Museum: The Wallace Legacy"**—This display, honoring the late DeWitt and Lila Acheson Wallace, philanthropists and co-founders of Reader's Digest, shows how the museum was envisioned and constructed by renowned architect Kevin Roche, examines how the museum adds to its collections and how the Colonial Williamsburg collections are used. Visitors also will enjoy an overview of the many delightful displays that have come and gone since the Wallace Museum first opened its doors in 1985. Ongoing exhibit.

**"Curtains, Cases and Covers: Textiles for the American Home, 1700-1845"**—This exhibit features upholstery textiles used on beds, chairs, tables, floors and windows and explores the visual impact of adding color, pattern, texture and warmth to early American rooms through textiles. Through September 2002.

**"Furniture of the American South"**—Take a look at more than 150 of Colonial Williamsburg's finest examples of early Southern furniture. Through Jan. 1, 2002.

**"Identifying Ceramics: The Who, What and Where"**—A basic understanding of the major categories of ceramics used in America and England from the late 17th to the early 19th centuries, with emphasis on features that distinguish one type of ceramic material from another. Through Jan. 1, 2002.

**"Lock, Stock, and Barrel: Early Firearms from the Colonial Williamsburg Collection"**—An outstanding display of military and civilian firearms. Ongoing exhibit.

**"New in Masterworks: The Thomas Frye Mezzotints"**—A delightful selection of mezzotint engravings by famed artist Thomas Frye (1710-1762). Through December 2001.

**"Peep Show! Panoramas of the Past"**—Take a peek at this revealing exhibition featuring 18th- and early 19th-century prints that were used with special viewing devices to amuse and instruct the viewers. The *vue d'optiques* and perspective prints depict landscapes and views of foreign places and events. Also included are panoramas made up of a series of prints that created three-dimensional views. Through May 27, 2002.

**"Revolution in Taste"**—Consumer choices in ceramics and metals during the 18th century. Ongoing exhibit.

**"Southern Faces"**—More than 20 oil portraits produced in the American South from 1740-1845. Through September 2002.

**"Treasure Quest: Great Silver Collections from Colonial Williamsburg"**—Hundreds of objects, including early English silver plate, donated to Colonial Williamsburg by major silver collectors. Ongoing exhibit.

### UPCOMING EVENTS

**"Whoop & Holler! The Changing Sound of the Banjo from Plantation to Appalachia,"** 4 p.m. Wednesday, Nov. 14, Hennessee Auditorium.

## NewsBriefs

### CW offers free admission for all active, retired, reserve military personnel, fire, police, EMT, Red Cross workers and their families during Veterans Day weekend

To honor U.S. military personnel and public safety workers, Colonial Williamsburg invites U.S. veterans of all wars, active, reserve and retired members of any branch of the Armed Forces, as well as firefighters, police officers, emergency medical technicians (EMTs), Red Cross workers, and their families, to enjoy a special Colonial Williamsburg weekend, with complimentary admission and programs in their honor, over the Veterans Day holiday weekend Nov. 10-12.

The special weekend, "Honoring Service to America: A Colonial Williamsburg Veterans Day Weekend Tribute to the Nation's Military and Public Safety Personnel," is open to the public (tickets required) and will feature special programs and presentations Saturday, Nov. 10 through Monday, Nov. 12.

Highlights of the weekend include a special program and parade Saturday honoring firefighters, police officers, EMTs and Red Cross workers, with members of those groups invited to participate. A Veterans

Day parade and program Sunday will invite participation from veterans groups and feature scheduled remarks by U.S. Senator John Warner (R-Va.), former chairman of the Senate Armed Services Committee and currently its ranking minority member.

Other weekend programs will include performances by Colonial Williamsburg's Fife and Drum Corps, special appearances by Patrick Henry, Martha Washington and other leading 18th-century figures, participatory colonial military programs and demonstrations of 18th-century firefighting.

In addition to offering free admission, with valid ID or military discharge papers, to any veteran, active, reserve or retired member of the U.S. military, firefighters, police officers, EMTs and Red Cross workers, Colonial Williamsburg will offer members of those groups substantial weekend discounts at any Colonial Williamsburg Hotel. The products division also is offering a 10 percent discount on purchases in the foundation's 28 shops to anyone with this special ticket.

## Marketplace

**FOR SALE:** Adult motorcycle helmet \$75. ATV trail bag \$40. Four black JVC speaker stands. EC. Retail \$225—asking \$100. Gateway Laptop Solo 9300 CX, 800 Mhz, 15.7" display, 32 GB HD, 8x DVD/CD, extra battery, speakers, leather case, color printer and more. Local! Retail \$4200—asking \$2,500. Hardly used, home theater—Sony DAV S300. Incl. AM/FM receiver/CD player, digital amplifier, optical input, six speakers (one subwoofer). Hardly used, in the box. Retail \$600—asking \$475. Pottery Pager—stays right time accidents by holding child part in time. Retail \$30—asking \$20. Camper shell: High Door "CZ" Class (fiberglass) w/Flamm. Ladder Rack (heavy duty), fits Ford Ranger/equivalent, one year old but perfect condition, has been in storage. Painted Ford Tornado red. Retail \$1,100—asking \$775. Graco Partnerb—very good condition! Asking \$30. Two Graco Car Booster seats (40 lbs +), very good condition. Asking \$8 each (no recall on these), child's potty \$4. crib linens, Bears and For Air Ballons & Blue Sky—good condition \$4. Make us an offer on any or all. CALL Anne or Tom at 804-679-0714.

**FOR SALE:** Old black walnut table, drop leaf w/ several leaves: \$150. Old oak table, 45" square and extends to eight ft. \$300. CALL Phyllis at 229-8035 and leave message.

**FOR SALE:** Oak veneer entertainment center, 60" W x 71" H x 14" D, containing one two-door cabinet and two drawers for videos and CDs, open space for television and stereo equipment and/or book knicks \$75. OBO. CALL 220-2576.

**FOR SALE:** Twin bed includes Simmons Maxipedic mattress, boxspring, foundation, metal bed frame and brass headboard. All

pieces in very good condition (brass headboard is missing one decorative piece) \$45. Black boy's bicycle, 24 inch, 10 speed, Brite-Line model M2400, very good condition—\$50. Antique wagon-wheel ceiling light fixture, 36-inch wagon wheel w/ five old-weather style double-globed lights, complete w/ chains and wiring. This is a VERY STURDY frame (50-60 pounds) \$30. five-volume set, "Index of the Papers of the Continental Congress," published 1978 by the National Archives, compiled by John P. Butler, in MINT condition (please note that four volumes, not the text, of the papers) \$35. Black metal student floor lamp w/ three adjustable lights, 66-inch tall, very good condition. \$15. CALL Woody at 258-5599 or email at pompeii@aol.com.

**FOR SALE:** Contemporary teak "floating" queen-size bed: \$85; round white wicker end table \$18; lime green hexagon-shaped lamp, two for \$25 and exercise bike (new) \$50. All items in excellent condition! CALL 220-9988.

**MOBIL HOME FOR SALE:** 1996 Oakwood Home (14 x 80), three bedrooms and two bathrooms, est. m. kitchen, large walk-in closet in master bedroom, square footage 1,038, and living room has a built-in entertainment center. Any questions or interested CALL 804-943-4938, please w/ Tony or Christina. Located in Greenepark Mobile Village, 12 Hickory Lane, Williamsburg, Va.

**Deadline for Marketplace text is Monday at noon one week prior to publication. Ads must include employee's name and personal telephone number. Submit ad in person, through interoffice mail to GBO-132, fax to 220-7702 or email to pgs@cw.org.**

Colonial Williamsburg News is published weekly by the Public Relations Department for Colonial Williamsburg employees. Send correspondence to: Colonial Williamsburg News, GBO-132 or fax it to 220-7702.

Director of Public Relations: Timothy W. Andrews, 7265  
Editor: Penna Rogers, 7121

Contributors: Jim Bradley, Kathleen Binner, Loraine Brooks, Dare Doody, Kathy Dunn, Carol C. Godwin, Tom Green, Sophia Hart, Linda McElroy, Kelly Milachuk, Mary Norment, Suzanne Seuratran, James M. Tishko, Lael White, Laura Wyatt

This publication is printed on recycled paper. © 2001 by Colonial Williamsburg Foundation