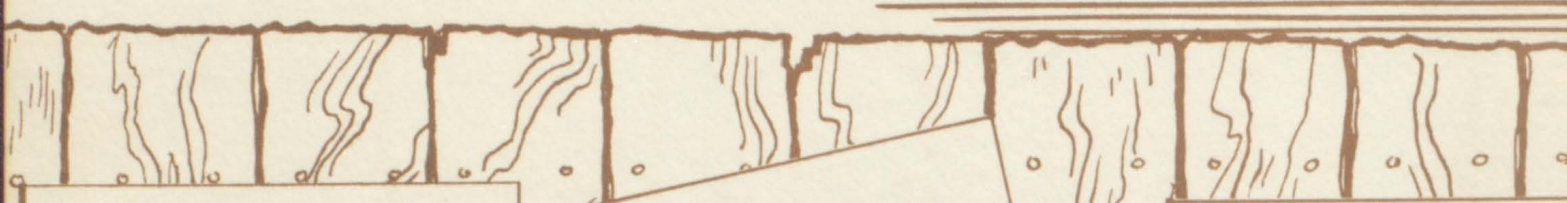
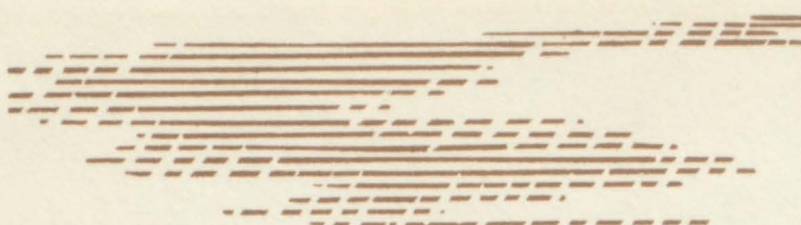



The  
Panther '51



**F**aculty



**S**eniors



**J**unior High



**S**izers



**J**uniors



**F**reshmen







Activities



Favorites



Elementary



Sophomores

Property of

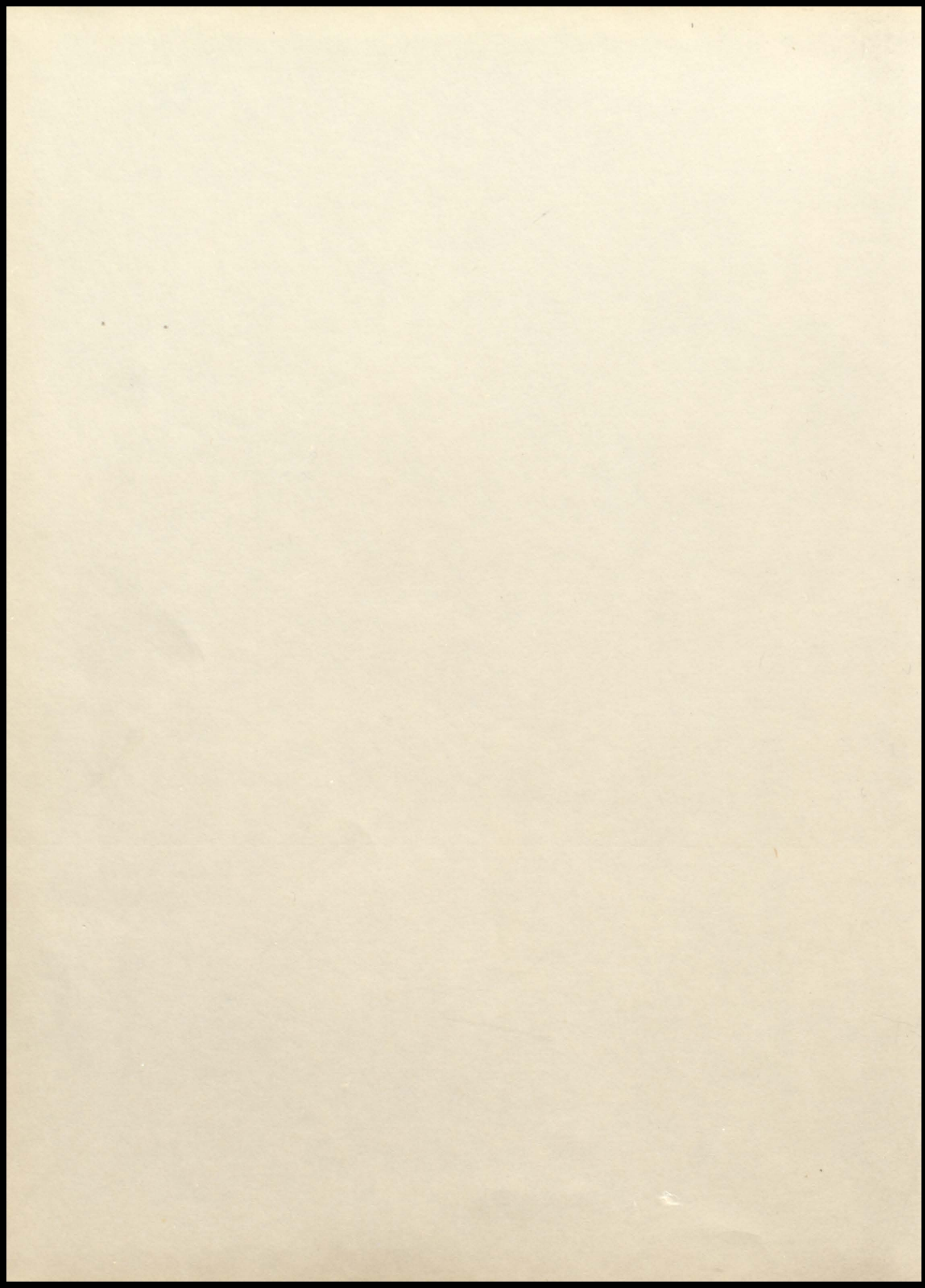
P  
AD  
Jan 1941

a

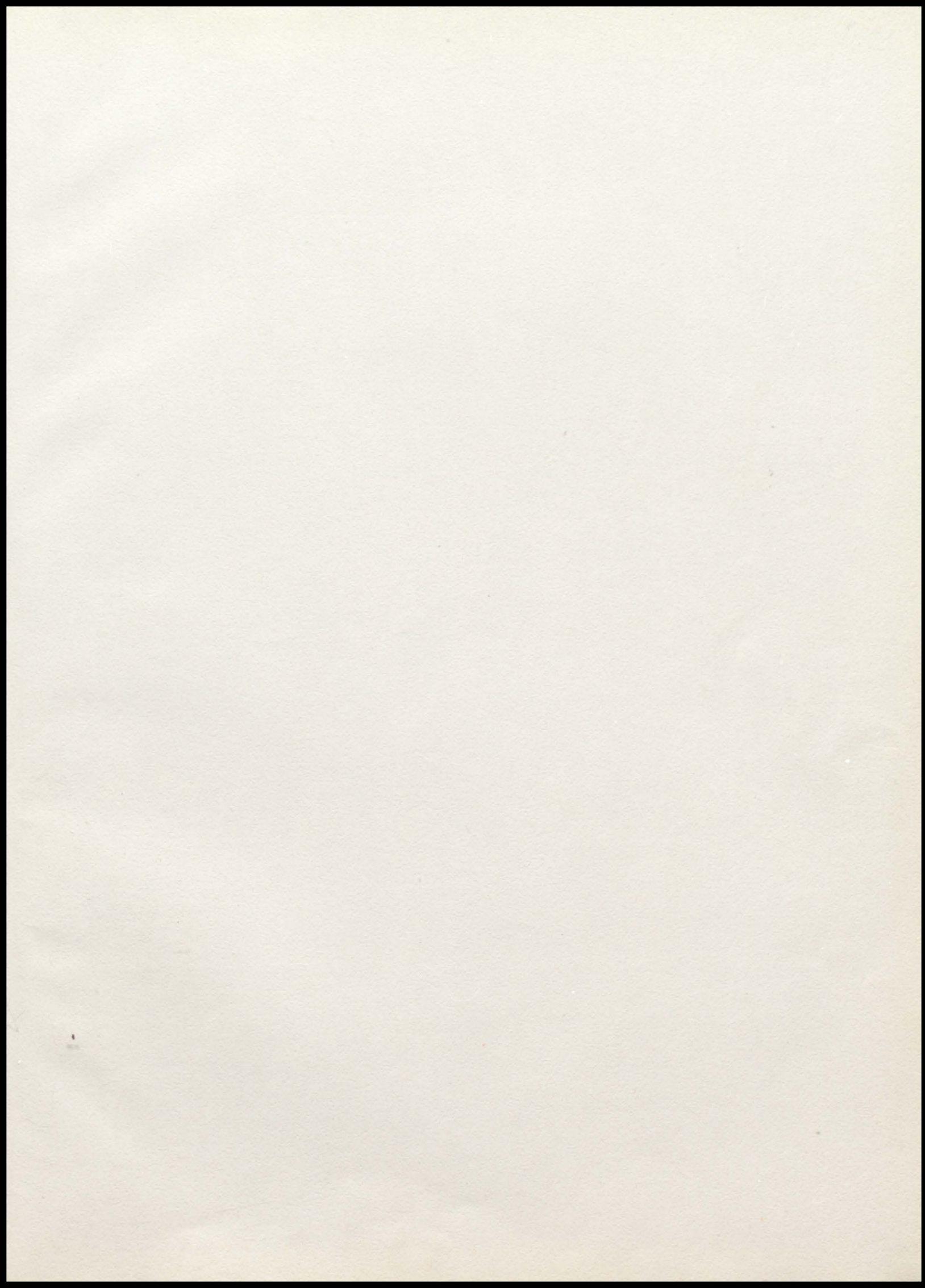


letics

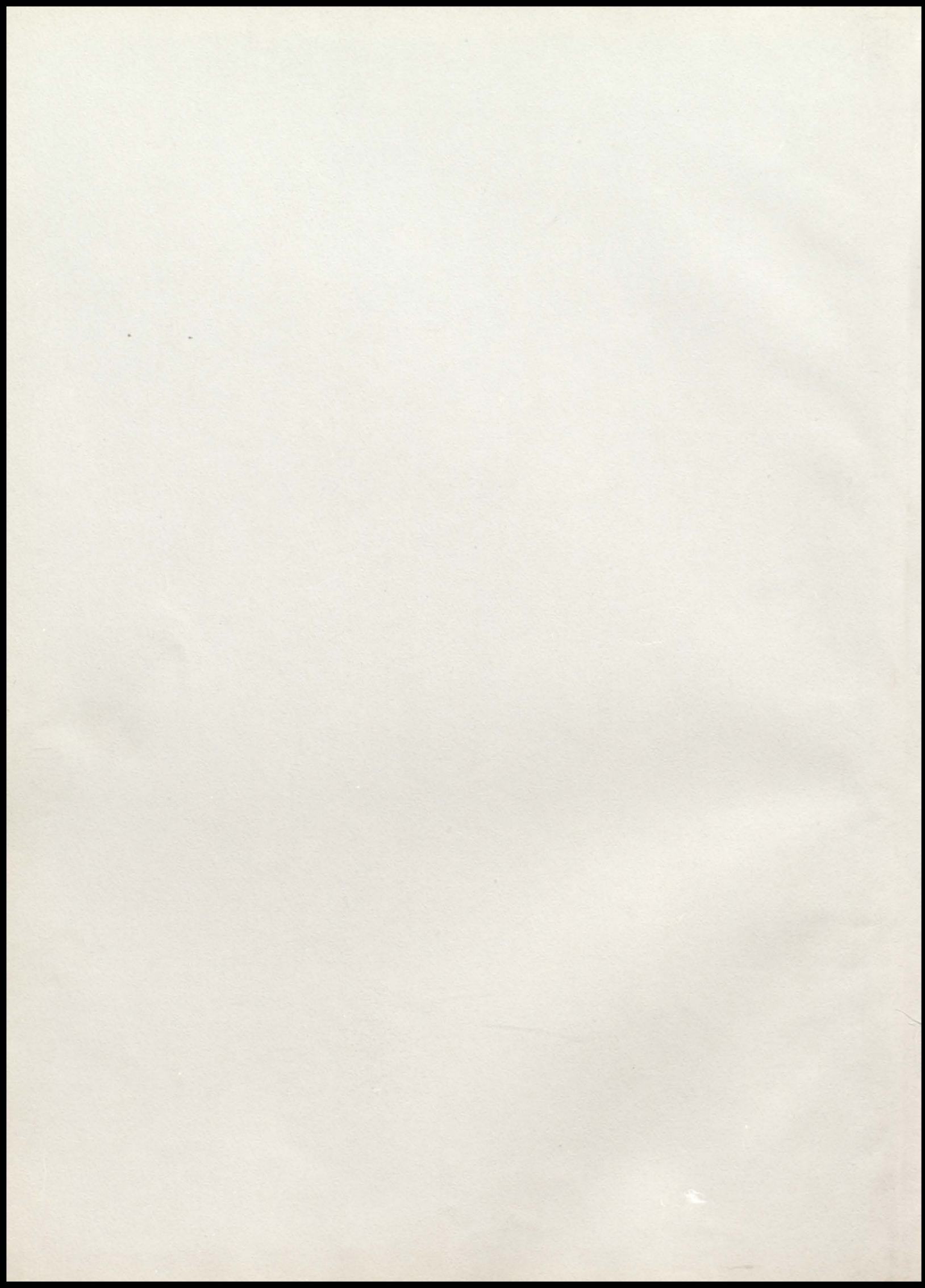














*The*



# *Panther*



*of*

**1951**

Published by  
the Beta Club of  
SUMNER COUNTY HIGH SCHOOL  
PORTLAND, TENN.

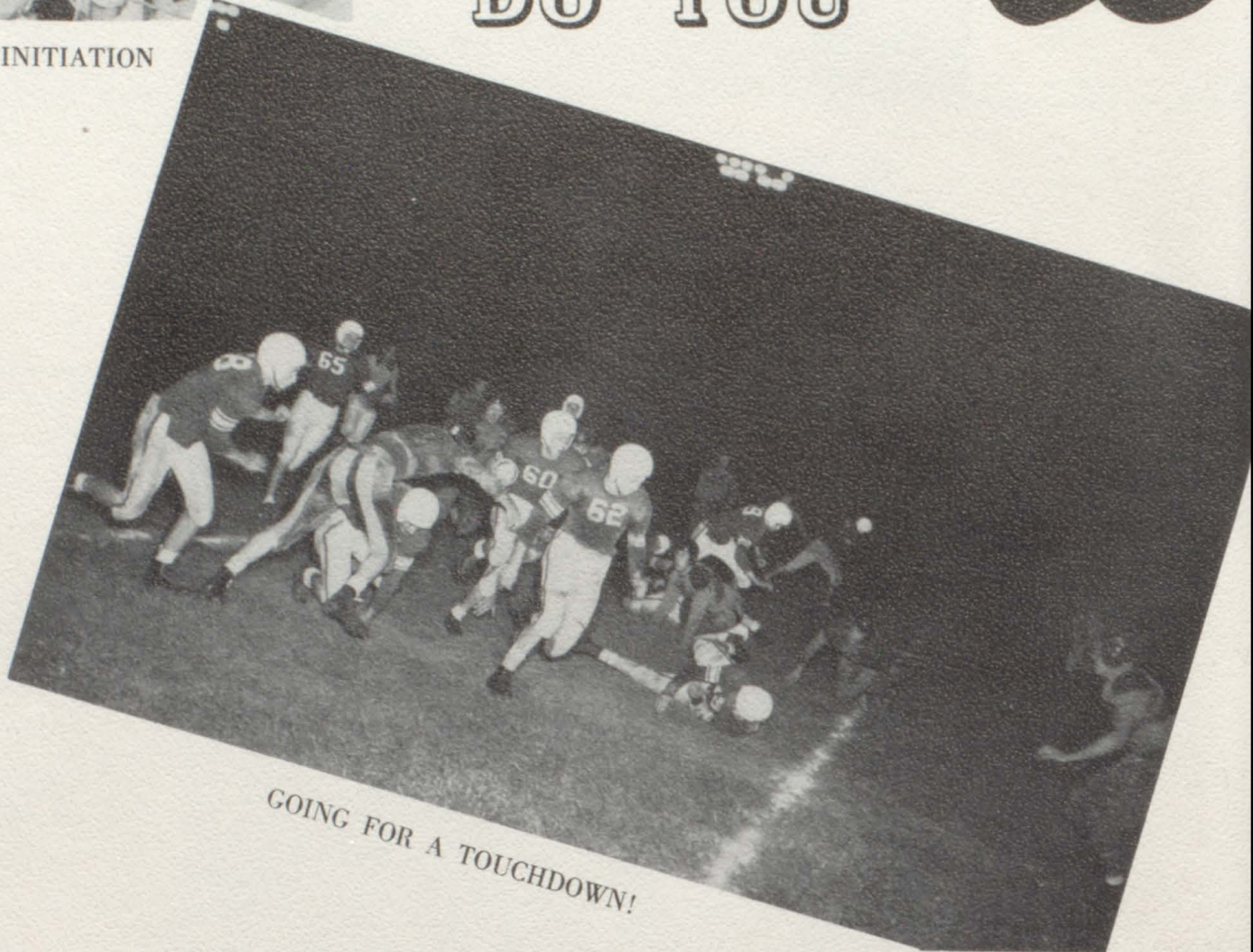


we

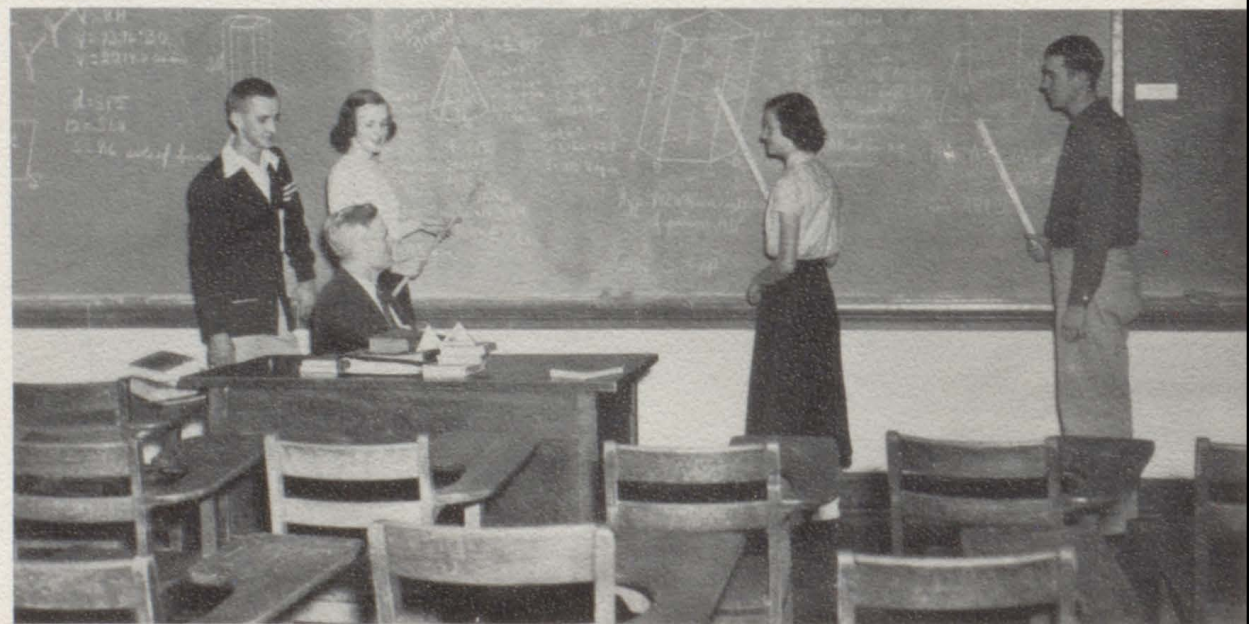
DO YOU



FRESHMAN INITIATION



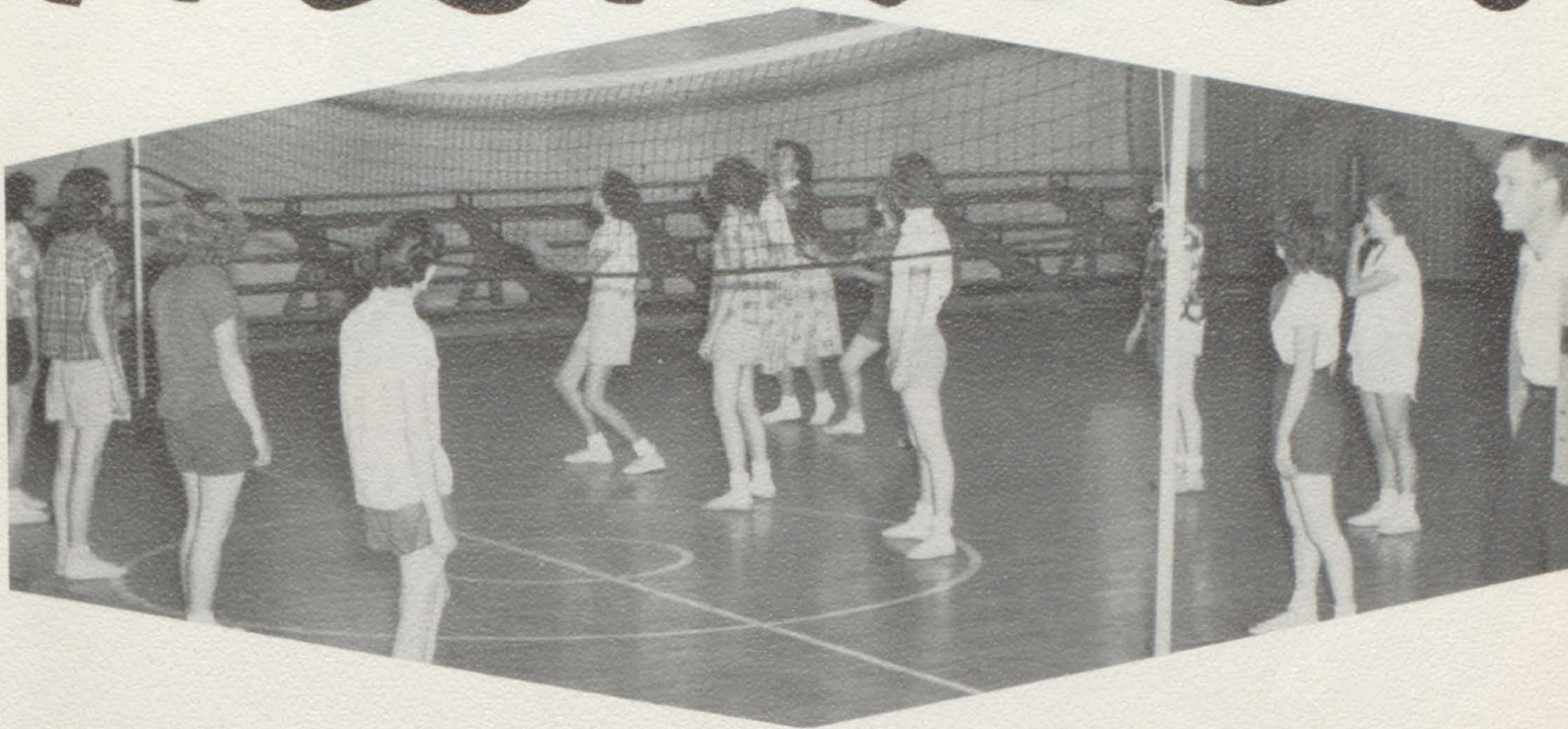
GOING FOR A TOUCHDOWN!



SOLID GEOMETRY CAN BECOME A PROBLEM!



# member



WHERE IS THE BALL?



ALWAYS READY TO RIDE?

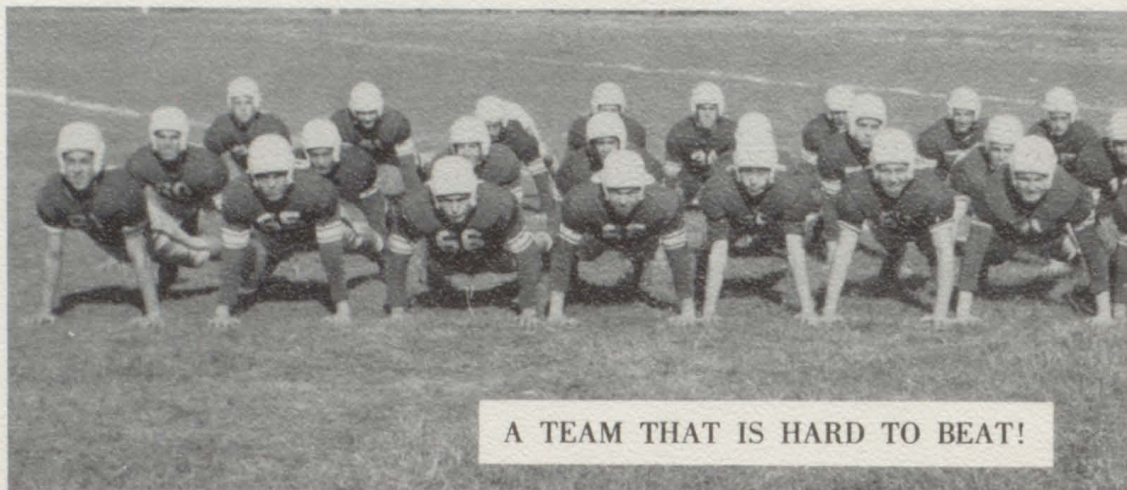


PRACTICE MAKES PERFECT





CRAMMING FOR FOOD—BUT NOT FOR TESTS



A TEAM THAT IS HARD TO BEAT!



THE MORNING ROUTINE!



DO YOU

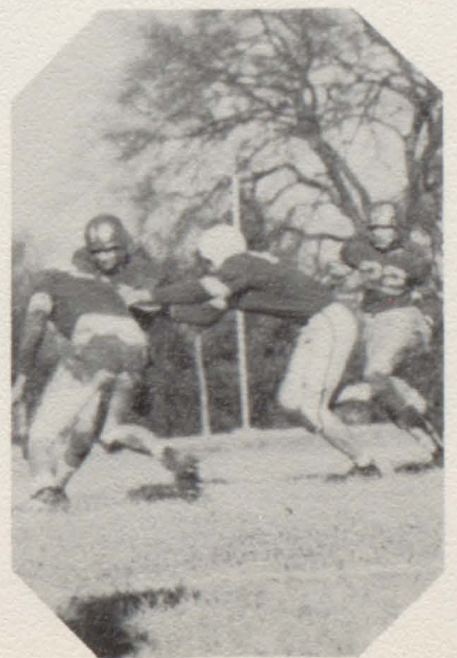
*remember*



CROWNING QUEEN WANDA AT "HOMECOMING"

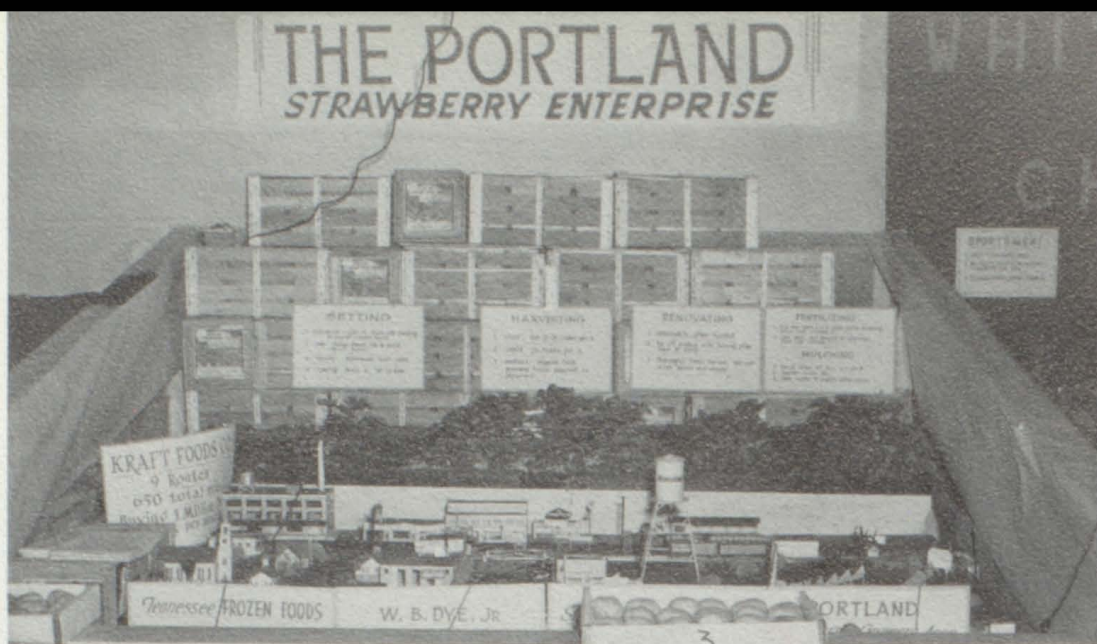


BETA CLUB INITIATION

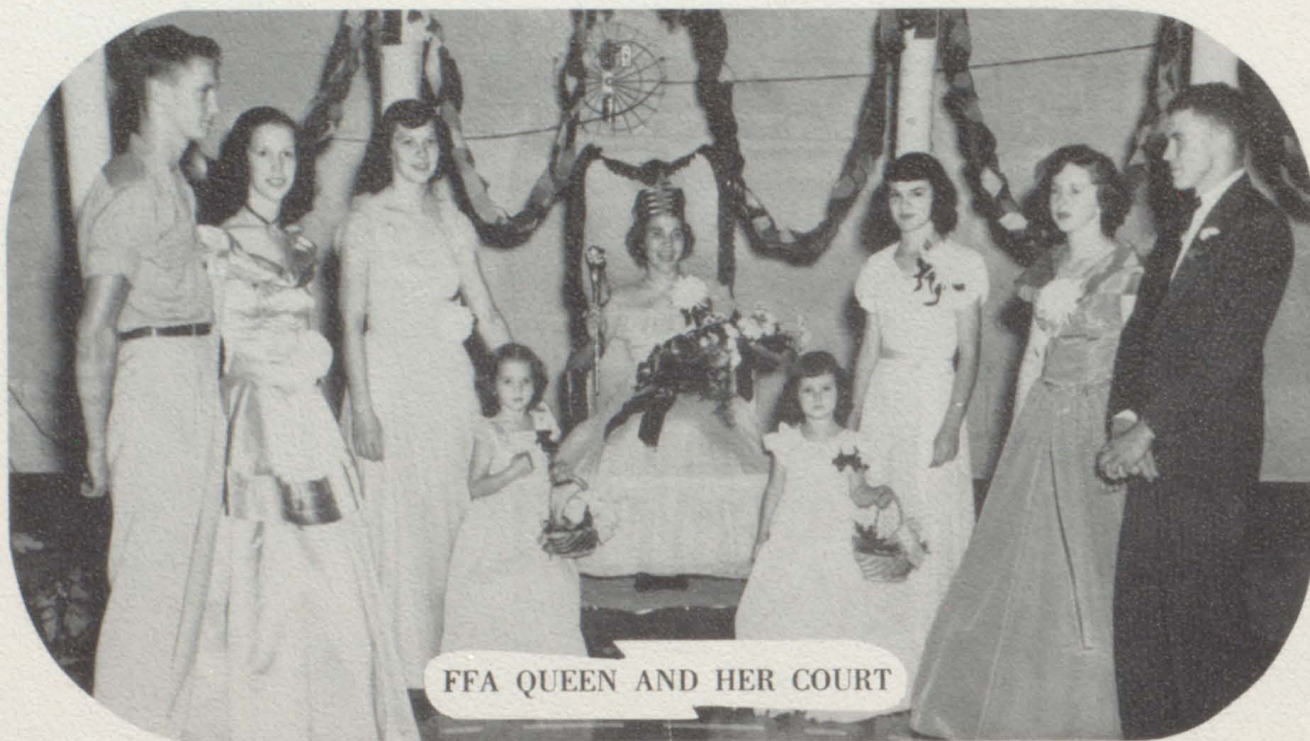


HIT 'EM HARD!





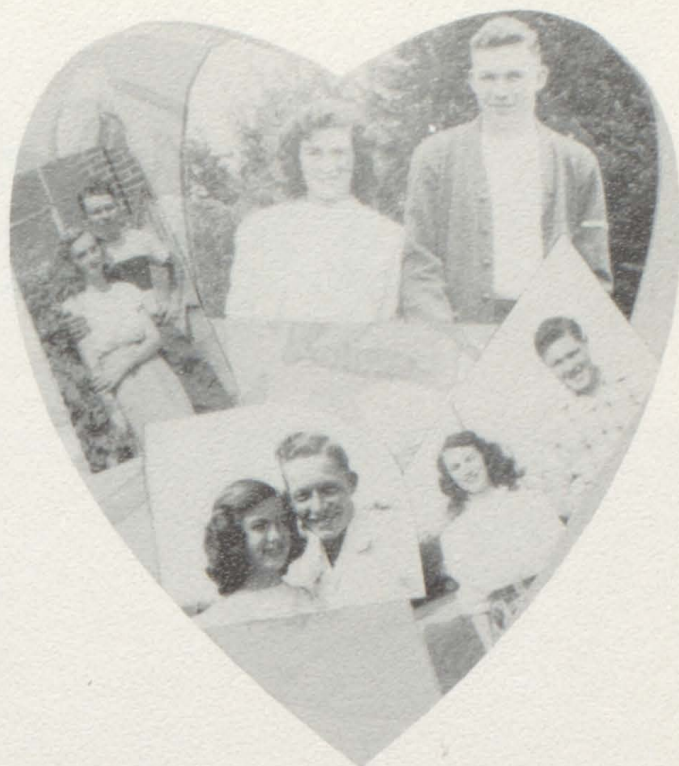
THE FFA STATE FAIR ENTERPRISE





DO YOU

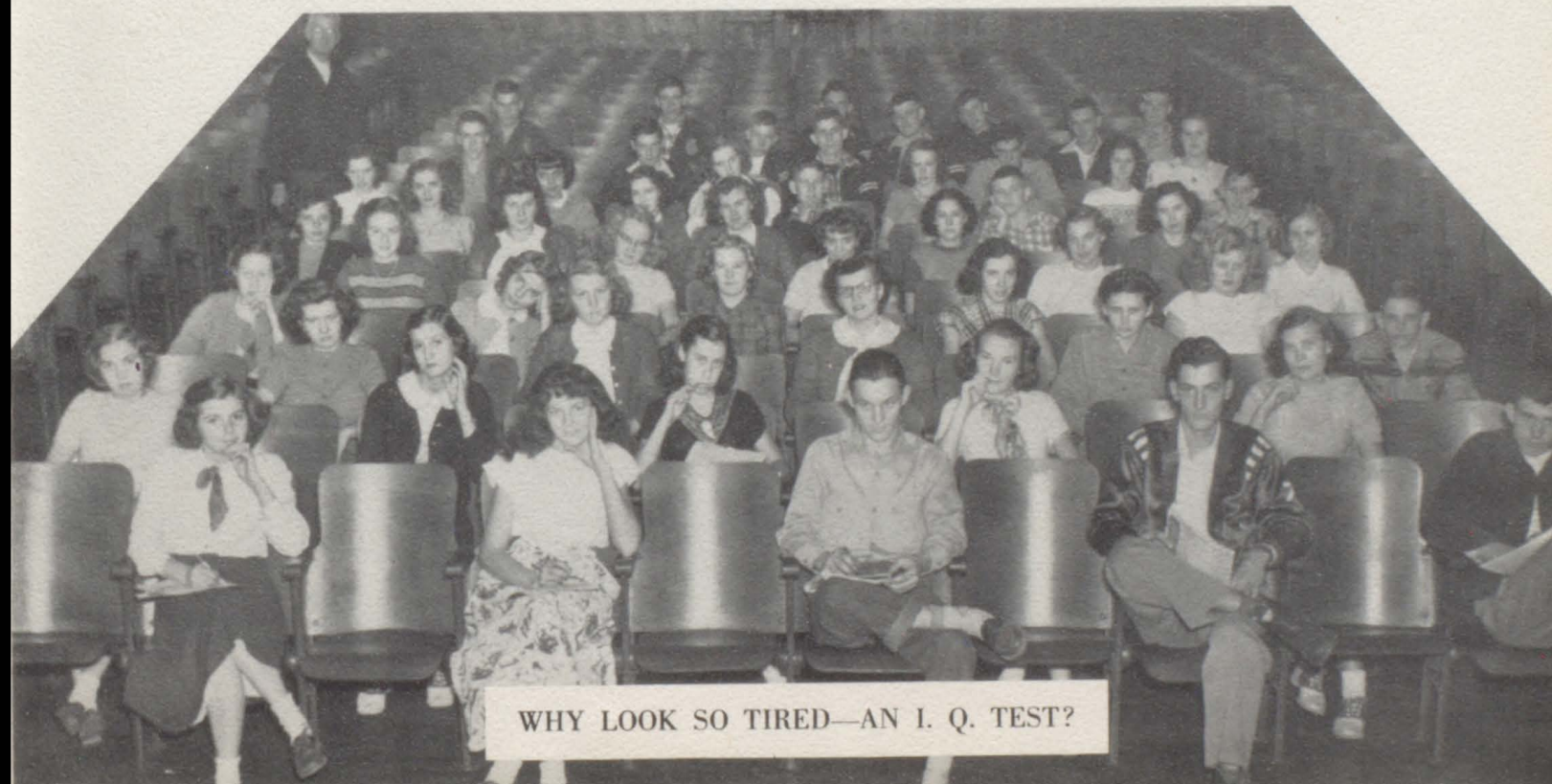
remember



CAMPUS COUPLES



JUNIOR-SENIOR TRIP



WHY LOOK SO TIRED—AN I. Q. TEST?



# Annual Staff



Jane Dye, *Editor*

Wanda Kirkham, *Asst. Editor*

Alberta Street, *Bus. Mgr.*

Mrs. Florence Hunnicutt, *Sponsor*



# Foreword



We all know that someday our lives will consist of problems and responsibilities that are more momentous than these of today.

It is then that we will be grateful for reminders that things were once much less complicated. It will be pleasing to recall the excitement of football games, the plays, the friendly associations, the club meetings, the contests, and maybe even the geometry tests of our high school days.

With these thoughts in mind, we present the 1951 EDITION of the PANTHER.

EDITOR





MRS. W. T. HARDISON

*Dramatics*

Our beloved teacher of dramatics, advisor, and friend whose tragic passing on November 7 has left an emptiness in our school life and in our hearts that we cannot seem to fill.

*And now the final curtain is rung down  
She's acted well her part; her lines are said;  
The walls re-echo with the sounds of praise  
Commingled with the Grand applause, "Well done."*



# Principal's Message



This book is a tribute to those who have worked so diligently to make its publication possible. The cooperation of all students on this project is symbolic of the ability and spirit that exists in our school.

To a wonderful student body, I wish you a successful, enjoyable, and profitable school year.

Sincerely,

*W. M. Hunter*



# Dedication

He seems to prize knowledge as man's noblest wealth, and he has conscientiously endeavored to teach us to understand and practice this most valuable philosophy.

He has been just and merciful with us as we have struggled to obtain a smattering of scientific knowledge. He has been our friend and advisor while we have trodden daily the halls of our beloved Alma Mater. For these, and many other things, we are unspeakably grateful.

And thus . . . . .

It is with a mingling of affection and respect that we, the Senior Class of 1951, dedicate this edition of THE PANTHER to Mr. Lawrence Bradley.



LAWRENCE BRADLEY  
*Science*





Mildred Cardwell  
*Commercial*



Mrs. W. A. Dorris  
*Home Economics*



W. A. Dorris  
*Agriculture*



Jane Dunn  
*Office Secretary*



Mrs. Duncan Empson  
*Librarian*



H. L. Gregory  
*Mathematics*



Florence Hunnicutt  
*English*



Mrs. Earl Jernigan  
*Social Science-Physical Ed.*



Mrs. A. W. Mischnick  
*Social Science-English*



Douglas McDonald  
*Coach-Science*



Mrs. O. M. Moore  
*Languages-Mathematics*

*Faculty*



Yvonne Cummings	97.75
Jane Briley	97.50
Sara Frances Knowles	97.50
Wanda Kirkham	97.00
Mary Jo Perdue	97.00
Charlie Jones	96.75
David Lanier	96.75
Shirley Link	96.75
Carolyn McDowell	96.50
Frances Hunnicutt	96.00
Yvonne Lee	96.00
Betty Dye	95.50
Joe Elliott	95.50
Mary Elizabeth Webb	95.50
Fayola Deasy	95.50
Peggy Franklin	95.25
Laura Ruth Claiborne	94.75
Thelma Wakefield	94.75
Mary Callis	94.50
Norman Lane	94.25
Alberta Street	94.25
Wanda Wallace	94.25
Jane Dye	94.00
Carey Lanier	94.00
Carol McGlothin	94.00
Ann Brown	93.75
Robert Brown	93.75
Joan Callis	93.75
Eleanor Martin	93.75
Mary Ellen Williams	93.50
Carleen Knowles	92.75
Rebecca Hurt	92.75
Noel Lane	92.75
Pattie Stinson	92.50
Mary Bradley	92.00
Frank Empson	92.00
Jeanette Gourley	92.00
Eurie Jean Jenkins	91.75
Gloria Link	91.75
Charles McDougal	91.50
Alice Shirrell	91.50
Doris Brown	91.25
Jimmy Woodard	91.25
Donna Faye Perdue	91.00
Jean Mayes	90.75
Jean Ragan	90.75
Patty Brown	90.50
Joyce Woodard	90.50
Sue Dobbs	90.25
Betty George	90.00
Joe Hester	90.00
C. W. Riggs	90.00





Seniors

Joe Collins  
Pres.

Loh Wilkinson  
Sec.

Joyce Woodard  
Treas.

Larry Johnson  
Vice-Pres.





THOMAS ATCHISON

*"Thomas really likes to sing,  
He may someday be as great as Bing,  
He is a big boy with lots of brains,  
But it comes in seasons like the rains."*

Debate 3, 4; Winning CVC Debate Team 3; Glee Club 3, 4; NFL 3, 4; Thespian 3, 4; FFA 4; Class Tournament 3, 4.

HAROLD BELL

*"Harold would bend well-nigh double  
To keep his friends all out of trouble,  
His kind heart seems to see the need  
Of doing for others some good deed."*

Football 2, 3, 4; Letter Club 3, 4; Glee Club 4; Language Club 4; Class Vice-President 3.



BLONNIE BRILEY

*"Blonnie is bashful  
But kind to all,  
Willing to help  
Whenever you call."*

FFA 1, 2, 3, 4.

JANE BRILEY

*"Jane is intelligent  
And likely to succeed,  
To each call of duty  
She gives instant heed."*

Valedictorian; Beta Club 2, 3, 4; Annual Staff 3; Purple Herald Staff 3, 4; FHA Club 1, 2; Glee Club 2, 3, 4; Treasurer 2; Dramatics Club 3, 4; Thespian 3, 4; Language Club 3, 4; Treasurer 3; Letter Club 3, 4; Basketball Manager 3; Commercial Club 3, 4; President 4; CVC Music Contest 3; CVC Piano Duet 3; CVC Vocal Quartette 3; Democracy Contest 3, 4; Class Tournament 4.



JOE BROWN

*"Joe is a boy  
With a level eye,  
When it comes to a problem  
He'll do it or die."*

FFA 1; Glee Club 4.

ROBERT BROWN

*"Robert is kind  
And likely to succeed;  
He is never behind  
In doing a good deed."*

FFA 1; Vice-President of Class 2, 3; Student Council 4; Class Tournament 3; Most Outstanding Boy-3, 4.

MARY CALLIS

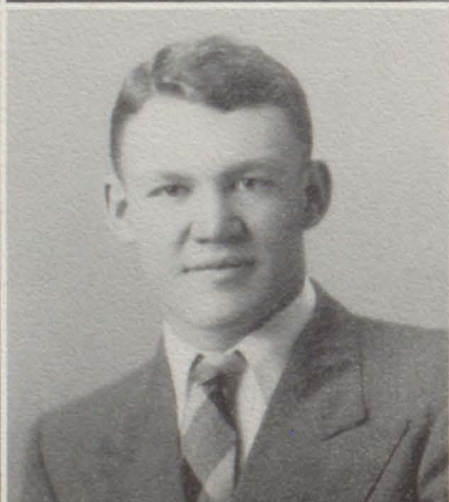
*"Mary's a girl  
With eyes of brown,  
It's very few times  
We see her frown."*

Science Club 2, 3, 4; FHA Club 1, 2, 4; Chapter Degree Song Leader 4; CVC Music Contest 1, 2, 4; CVC Vocal Quartette 3; Glee Club 1, 2, 3, 4; Reporter 4; Commercial Club 4; Beta Club 3, 4; NFL 3, 4; Class Tournament 1, 3; Basketball 4; Democracy Contest 3.

JOE COLLINS

*"Joe Collins, or 'Red'  
As we all know,  
Is a swell Captain  
Not only for show."*

Football 1, 2, 3, 4; Captain 4; Most Valuable Player 4; All CVC Guard 3; Vice-President of Class 1; Secretary of Class 2; President of Class 3, 4; Glee Club 3, 4; FFA 1, 2; President 1; Track Team 3, 4; Letter Club 3, 4.







LARRY COLLINS

*"This handsome fellow is called Larry,  
And he is never known to tarry.  
On the football field, he's a whiz.  
He's the most romantic boy there is!"*

Football 1, 2, 3, 4; FFA 1, 2, 3, 4; President 4; Letter Club 3, 4; Treasurer 4; Glee Club 4.

REBECCA CUMMINGS

*"Rebecca is a girl  
With words not many,  
A better friend—why  
There isn't any."*

FHA Club 1, 2, 3, 4; Glee Club 3; Commercial Club 4.



MARY E. DILLARD

*"Oh, yes, her name is Mary,  
But not the mistress quite contrary.  
We like her smile and her sparkling eyes,  
And we like Mary for she always tries."*

Glee Club 2, 3, 4; FHA Club 1, 2, 3, 4; Commercial Club 4.

SUE DOBBS

*"Sue is very kind  
Doing work, she does not mind,  
Always trying to help out  
When some friend she finds in doubt."*

Glee Club 1; FHA Club 1, 2, 3, 4; Commercial Club 4; Reporter 4.



JANE DYE

*"Whatever she meets,  
On highway or lane  
Is full of significance  
To intelligent Jane."*

NFL 2, 3, 4; Thespian 3, 4; President 4; Debate Team 2, 3, 4; Winning CVC Debate Team 2, 3; Keyboard Club 1, 2; CVC Music Contest 2, 3; FHA 1; Glee Club 1, 3, 4; Language Club 2, 3; Secretary 2; Beta Club 2, 3, 4; Science Club 2, 3, 4; Vice-President 2; President 3, 4; Paper Staff 2, 4; Yearbook Staff 2, 3, 4; Editor 4; Business Mgr. 3; Dramatics Medal 3; Class Tournament 1, 3.

DAVID FARMER

*"David is a true athlete  
Who shines in every sport,  
And in love he's hard to beat  
And handsome 'tho he's rather short."*

FFA Club 1, 2, 3, 4; Reporter 4; Football 3, 4; Basketball 3, 4; Glee Club 4; Letter Club 3, 4; Track Team 3, 4.



PEGGY FRANKLIN

*"No sloppiness for her—  
Peggy's neat as a pin.  
Every hair is in place  
When she comes in."*

FHA Club 3, 4; Language Club 3, 4.

JEANETTE FREELAND

*"Jeanette is good in basketball  
She's very nice and rather tall  
She's smart and quite a dandy  
On the basketball floor she's always handy."*

Basketball 1, 3, 4; Captain 4; NFL 3, 4; Thespian 3, 4; Purple Herald Staff 3, 4; Commercial Club 3, 4; Glee Club 1, 3, 4; Science Club 2; Letter Club 3, 4; Language Club 3, 4; FHA Club 2, 4.





### BETTY GEORGE

*"Of even keel is our friend Betty,  
She is neat and sweet and very pretty,  
She is not too warm and not too cold;  
Not too shy and not too bold."*

Treasurer of Class 1; FHA 1, 2; Secretary 2; Glee Club 2, 3; Basketball 1; Tournament 1, 3, 4; Commercial Club 3, 4; Secretary and Treasurer 4; Language Club 3, 4; Letter Club 3, 4; Basketball Manager 3.

### PAUL HEADY

*"Paul Heady is tall  
But he doesn't mind,  
He's also a good sport  
And always so kind."*

FFA 1, 2, 3; Glee Club 3, 4; Commercial Club 4; Debating 4; Class Tournament 3, 4.



### BESSIE HUGHES

*"Quiet as a little mouse,  
And sweet and clean and neat;  
To have this girl around the house  
Would be a special treat."*

FHA Club 1, 2, 3, 4; Glee Club 2, 3.

### FRANCES HUNNICUTT

*"Frances—a whiz at basketball  
And anything else she tries—  
Is kind and friendly to one and all  
When she's around, it's all blue skies."*

Salutatorian; Beta Club 2, 3, 4; Treasurer 4; Purple Herald Staff 4; Editor 4; FHA Club 1; Glee Club 1, 2, 3, 4; Basketball 1, 3, 4; Language Club 2, 3; President 3; Science Club 2, 3, 4; Treasurer 3; Vice-President 4; Commercial Club 3, 4; Letter Club 3, 4; Music Club 1, 2; Dramatics Club 3, 4; CVC Music Contest 1, 2, 3, 4; Democracy Contest 3, 4; Thespian 3, 4.



### EURIE JEAN JENKINS

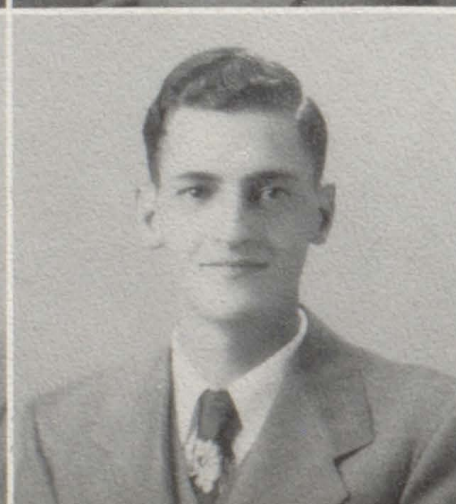
*"In any situation,  
Eurie Jean's a cutie;  
She is always ready  
To do what is her duty."*

Glee Club 2, 3; FHA Club 1, 2, 3, 4; Treasurer 4; Commercial Club 4; Purple Herald Staff 4; FFA Queen 1; Football Queen Attendant 2, 4; Beta Club 4; Class Tournament 3.

### LARRY JOHNSON

*"Larry, though little,  
Is a good athlete;  
When it comes to passing  
He can't be beat."*

President of Class 1; Vice-President of Class 4; FFA 1, 2, 3; President 2; Treasurer 3; Glee Club 3, 4; Language Club 4; Letter Club 3, 4; Vice-President 4; Basketball 3, 4; Football 1, 2, 3, 4; Track Team 3, 4.



### CHARLIE JONES

*"Charlie Jones is nice and quiet,  
But get him tickled and he's a riot.  
He has a nickname called "T-Bone,"  
Because he's tall without much pone."*

FFA 1; Science Club 3, 4; Commercial Club 4; Publication Manager of Paper Staff 4; Testator.

### JIM JONES

*"Jim Jones is a play boy,  
With black, shiny hair,  
And he's good on a ball floor,  
As he flies through the air."*

FFA 1; Basketball 1, 3, 4; Letter Club 3, 4.





**DONNELL LEATH**

*"Donnell is not so handsome  
Though lucky in getting a wife.  
But when it comes to football,  
He's great, you bet your life!"*

Football 1, 2, 3, 4, 5; Alt. Captain 5; All CVC Center 4; Letter Club 1, 2; FFA 1, 2, 3, 4; Treasurer 2; Treasurer of Parks Sub-District 2.

**ERA LINK**

*"Era is cheerful  
Toward everyone she meets;  
And is never tearful  
As each friend she greets."*

FHA 1, 2; Glee Club 3; Language Club 3, 4; Class Tournament 3.



**ELEANOR MARTIN**

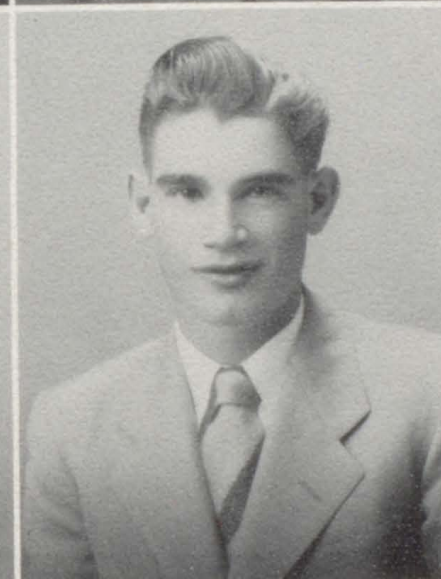
*"Eleanor's a cute little red-head  
And others she'll never forget,  
Because of her loving kindness,  
We wish we had sooner met."*

Glee Club 1, 2; FHA 1, 2, 3, 4; Reporter 4; Assistant Parliamentarian 4; Beta Club 4; Commercial Club 4; Program Committee 4.

**JOHNNY MERRITT**

*"Johnny can take a basketball  
And easily make a score,  
You can hear everyone call  
When he is on the floor."*

Basketball 3, 4; Letter Club 4; Language Club 3, 4.



**STANLEY NESBITT**

*"A courteous boy  
And friendly, too;  
The best of friends  
He's always true blue."*

Science Club 3, 4; Glee Club 3, 4; Language Club 4.

**HAROLD PAYNE**

*"To get to be a senior  
Made Harold very glad.  
He's known among his classmates  
As the wittiest lad."*

FFA Club 1, 2; Glee Club 3.



**MARY JO PERDUE**

*"A girl who's sincere  
Is quite a cheer,  
That's what makes  
Mary Jo such a dear."*

Class Prophet 4; FHA Club 1, 2; Glee Club 3; Language Club 3, 4; President 4; Student Council 4; Class Tournament 3.

**JEAN RAGAN**

*"Jean always has a smile  
Though she has her troubles, too.  
That's the kind of friends you need,  
One to cheer you when you're blue."*

FHA Club 1, 2; Glee Club 1, 3; Science Club 2; Language Club 3, 4; Paper Staff 4; Commercial Club 4; Basketball Manager 4; Class Tournament 1, 3.





**PATTIE SUE STINSON**

*"Pattie Sue has proven herself  
To be efficient in many ways.  
This will teach her how to meet  
The coming but sometimes trying days."*

Glee Club 1, 2, 3; Science Club 2, 3; Commercial Club 2, 3, 4; NFL 1, 2, 3, 4; Thespian 2, 3, 4; Vice-President 4; Beta Club 3, 4; Vice-President 4; FHA 1, 2, 3, 4; Reporter 3; President 4; FHA Sub-District Historian 3; Sub-District Secretary 4; CVC Duetist 3; CVC Contest Play 3; CVC All-Star Cast 3; State All-Star Cast 3; Class Tournament 3; Democracy Contest 4.

**WANDA WALLACE**

*"Wanda's a gal  
Who's full of glee,  
But sincere and sweet—  
That's the way to be!"*

President of Home Room 1; FHA Club 1; Science Club 2, 3, 4; Secretary 3, 4; Language Club 3, 4; Vice-President 4; Letter Club 4; Commercial Club 3, 4; Paper Staff Art Editor 3, 4; Glee Club 3, 4; Beta Club 3, 4; Cheerleader 4; Football Queen 4; FFA Queen Candidate 2.



**DOT WILKINSON**

*"A pretty little girl is Dot,  
She is always on the spot  
To lead the rah-rahs for our team,  
Her smile is like a bright sunbeam."*

Miss SCHS; FHA 1; Music Club 1, 2; Music Contest 1; Glee Club 1, 2, 3, 4; Language Club 3, 4; Secretary and Treasurer 4; CVC Music Contest 1, 2, 3, 4; Science Club 2, 3, 4; Treasurer 4; Beta Club 2, 3, 4; Secretary 4; Letter Club 3, 4; Treasurer 3; Secretary 4; Basketball 1, 2, 3, 4; Cheerleader 2, 3, 4; Captain 4; Tournament 1; NFL 1, 2, 3, 4; Thespian 2, 3, 4; Secretary 3, 4; Class Treasurer 3; Secretary 4; Commercial Club 2, 3, 4; Purple Herald Staff 2, 3, 4; Yearbook Staff 2, 3, 4; Football Queen Candidate 3; Most Outstanding Girl 2, 3, 4; CVC Speech Contest 1, 2; Girl Athletic Medal 3; NFL Speech Contest 1, 2.

**CHARLES WILSON**

*"He has the speed  
He has the looks,  
But sometimes he  
Forgets his books."*

Basketball 3, 4; FFA 1, 2, 3, 4; Reporter 3; Glee Club 2, 3, 4; Secretary and Treasurer 4; Letter Club 3, 4; Class Tournament 1; Cheerleader 1.

**JOYCE WOODARD**

*"Joyce is a girl  
Who's happy and gay,  
We hear her laughter  
At work and at play."*

DAR Representative; Purple Herald Staff 4; Business Mgr. 4; Commercial Club 3, 4; Language Club 2, 3; Glee Club 1, 2, 3, 4; President 4; FHA 1; Science Club 2, 3, 4; Librarian 4; Beta Club 3, 4; Class Treasurer 4; Class Tournament 3; FHA Queen Attendant 4; Basketball 4; Music Medal 2; Music Festival 2; CVC Music Contest 1, 2, 3, 4; CVC Piano Soloist 1, 2; CVC Vocal Quartette 1, 3; CVC Vocal Duet 2, 3; CVC Vocal Octette 2.

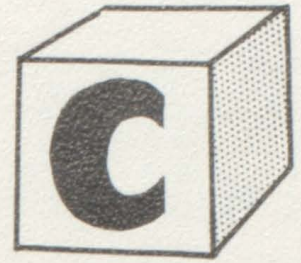
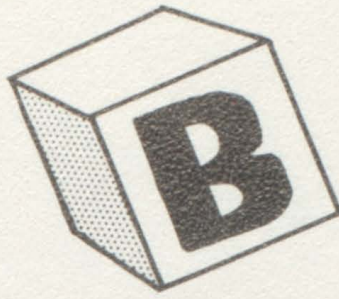
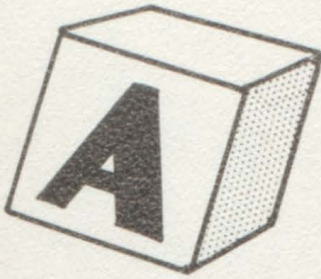


**NADINE CLAIBORNE**

**IN MEMORIAM**

*Tender thoughts will ever dwell  
On one who sleeps, hearing not the Bell  
That calls all humans to drink of Life  
And suffering and pain and strife.  
She faded away from living eyes  
And drifted off through boundless skies.  
She was beloved by all, an inspiring one.  
Now her task is completed and well done.*





WILKINSON—JOHNSON  
*Athletic*

BRILEY—HUGHES  
*Bashful*

EURIE JENKINS  
*Cute*

BRILEY—BROWN  
*Deserving*

PATTIE STINSON  
*Efficient*



JEAN RAGAN  
*Friendly*

WANDA WALLACE  
*Gleeful*

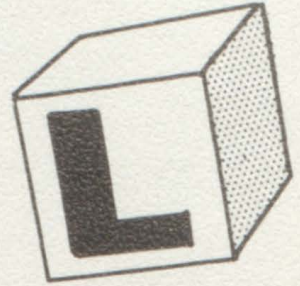
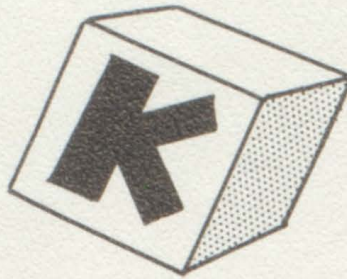
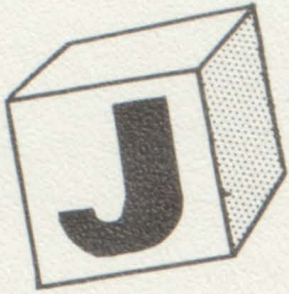
WILSON—COLLINS  
*Handsome*

CHARLIE JONES  
*Intelligent*

MARY CALLIS  
*Juvenile*

SENIOR





LINK—DOBBS  
*Kind*

ROBERT BROWN  
*Likely to Succeed*

JOYCE WOODARD  
*Musical*

FRANKLIN—GEORGE  
*Neat*

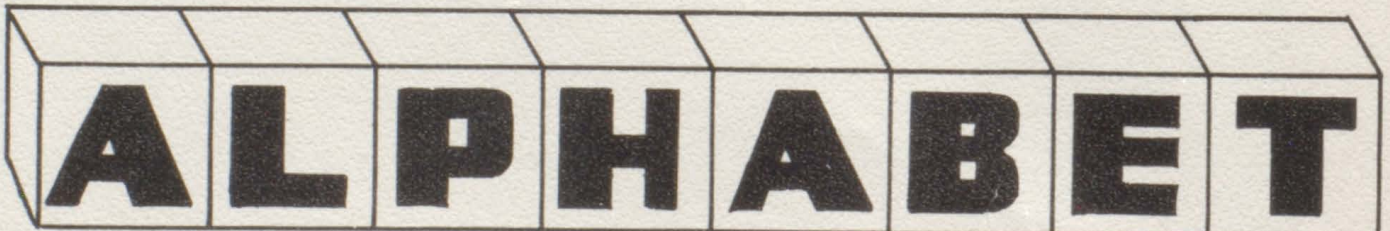


BELL—MERRITT  
*Original*

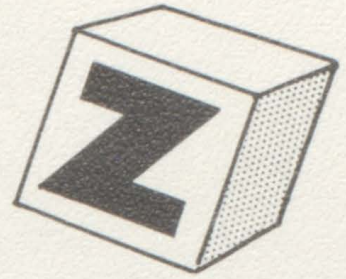
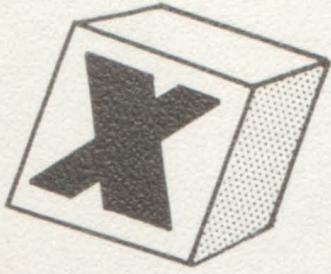
JEANETTE FREELAND  
*Pretty*

REBECCA CUMMINGS  
*Quiet*

LARRY COLLINS  
*Romantic*







PERDUE—HEADY  
*Sincere*



ATCHISON—DYE  
*Talented*



NESBITT—DILLARD  
*Understanding*



FRANCES HUNNICUTT  
*Versatile*



JONES—PAYNE  
*Witty*



DONNELL LEATH  
*X-uberant*



DAVID FARMER  
*Youthful*



ELEANOR MARTIN  
*Zealous*



# WHO'S

JANE BRILEY  
*Valedictorian*

FRANCES HUNNICUTT  
*Salutatorian*

# WHO



DOT WILKINSON  
*Miss S.C.H.S.*

JOYCE WOODARD  
*D.A.R.*

JOE COLLINS  
*Bachelor of Ugliness*



## CLASS WILL

We, the 1951 Senior Class of S.C.H.S. being of some mind but perhaps not so sound, do make and declare this document to be our last will and testament, and hereby make void all other testimonial declarations made by us.

We leave to Mr. Hunter and the faculty our sincere appreciation for their great accomplishments.

To the Juniors, we leave our compliments, to be given at the end of their graduation.

To the Sophomores, we leave a cheer to urge them on through the last half.

To the Freshmen, we give our admiration for starting their four years' work.

To the incoming Freshmen of next year, we give our soothing thoughts that school is not so bad.

Billie Petty Hunnicutt and Dot Denning Wilkinson leave their ability to acquire a "Mrs." to the "Old Maids" of S.C.H.S., and Donnell Leath leaves his sympathy for the bachelors.

Joyce wants to leave her girlish "giggle" so that there will be some joy for future students.

The "four horsemen" (David Farmer, Larry Johnson, Harold Bell, and Joe Collins) leave their cleverness in handling Miss Marie to Lanny Moore.

Charles Wilson leaves to Carol Jean his 63 in History.

Wanda Wallace has nothing to leave except Pa, but, of course, she wants to keep him.

Blonnie Hugh Briley and Paul Heady leave their determination to graduate to James Payne.

Mary Ellen Dillard leaves her ability to postpone an exam to Maurice Utley.

Jane Dye leaves to the entire student body her ardent views on democracy.

Jean Ragan says that she is just happy to leave.

Mary Callis leaves her pleasing smile to her sister.

Pattie Sue Stinson, Eleanor Martin, and Betty George leave their ability to criticize tests to the rest of the students.

Larry Collins just leaves with Wanda.

Mary Jo Perdue might leave Charles M. for one year, but not longer.

Rebecca Cummings, Bessie Hughes, Sue Dobbs, Era Link, and Peggy Franklin (all of whom flock together) leave their quietness and good manners to some loud-mouth. (David, maybe.)

Jeanette Freeland adds her basketball playing days to the memories of S.C.H.S.

Eurie Jean Jenkins leaves her good-looks to those self-conscious girls.

Thomas Atchison has nothing to leave for sometimes he becomes self-indulgent.

Jane Briley leaves her studiousness to Jane Bell.

Charlie Jones leaves to John Woodward his proposition of taking a few pounds of weight off his hands.

Johnnie Merritt is surprised to be leaving.

Robert Brown and Jim Jones leave their Math ability to Billy Riggs.

Joe Brown and Stanley Nesbitt, two average students who represent the average American, leave us their hope that even though the world is in a state of chaos, we might yet find solace in the days ahead.

CHARLIE JONES  
*Testator*



## CLASS PROPHECY

As we, the class of 1951, look ahead we do not know what the future holds for us. Each of us has his own idea, but we cannot really know what Fate has planned. Being unable to control my curiosity yesterday, I went to a gypsy and asked her to predict the future for the Seniors. She peered into her crystal ball and this is what she told me:

It is the year 1961. The streets of New York are crowded with people going to a concert given by Mary Callis, and Thomas Atchison, the renowned singers. And look who's directing traffic! It's Joe Brown, New York's smartest traffic cop who received his training at Portland. As we look around the audience, we see Eurie Jean Jenkins and Sue Dobbs who are honeymooning after prolonged engagements. We also see the famous Conover model Jeanette Freeland wearing the gorgeous creation of dress designer, Eleanor Martin who owns a smart shop on Sixth Avenue. Johnnie Merritt's new play, "S.C.H.S.—The Best Years of Our Lives" is now on Broadway. Its star is Joyce Woodard, Tennessee's most famous actress. Just around the corner is Rebecca Cummings' reducing salon. Here comes her secretary, Peggy Franklin with a customer. Why, it's Era Link!!!

Now the scene switches to San Anita where jockey Robert Brown is riding Sweet Pickle, owned by Paul Heady. And, just as I expected—there are Donnell Leath and Charles Wilson at the \$2.00 window, playing the horses again! There's David Farmer, home from the Air Force. See how he throws out his chest? He's just won his wings.

Now we go to another track. This time it's a motorcycle race. Everyone is betting 10 to 1 on Stanley Nesbitt, because he has won his last nine races. But riding against him today is that black-haired daredevil, Jim Jones. Coming down the aisle to their seats are Bettie George, Jane Briley and Jean Ragan who have just finished their screen tests at MGM. They seem very happy.

The scene changes again and we see Portland. Dot Wilkinson and Billie Hunnicutt are the editors of the Lovelorn Column in "The Portland Sun." But, because there is a little trouble they advise everyone to get married immediately, no matter what the problem! And guess who's gossip editor? Why it's Bessie Hughes. Can you imagine that? But they have stopped working now to listen to the radio because they want to hear Representatives Harold Bell and Jane Dye debate the pending Federal tax bill.

Wait a minute! Is that music I hear? It sounds like the Wedding March. Quick, let's take a peek inside the church. Not an empty pew anywhere! Why, there is Professor Charlie Jones with his secretary, Mary Ellen Dillard. There's also Larry Johnson, captain of Tennessee Vols. And here comes the happy couple. Oh my, it's Wanda Wallace and Larry Collins!!! I didn't think he had the nerve to ask her. The best man, Joe Collins, is steadying bridesmaid Pattie Stinson who is looking wistful. Maybe she has similar plans???? The Rev. Blonnie Briley has just finished the ceremony and everyone is throwing rice.

The picture is fading. Wait a minute—I thought I caught a glimpse of myself. Oh well, I guess I'll just have to wait and see what happens to me.

MARY JO PERDUE

*Class Prophet*





Junior Lanny Moore  
Treas. Betty Dyle  
Sec. Bert Anglea  
Pres. Noel Lane  
Vice-Pres.





BERT ANGLEA

*"You think he's all fun—but the angels sing, too, at the good he has done."*

WAYNE BENNETT

*"He who invented work should have finished it."*

MR. BRADLEY—SPONSOR

*"His bark is worse than his bite."*



LONNIE BRILEY

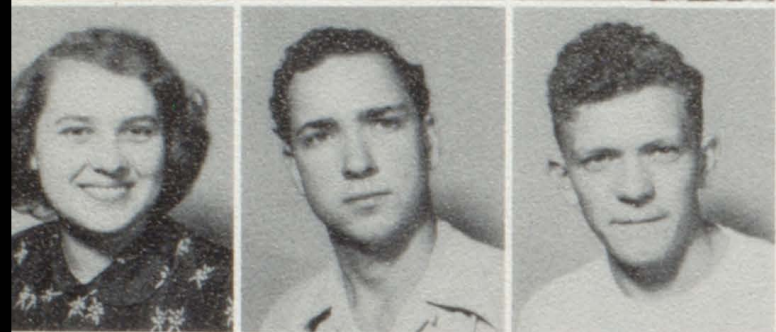
*"Have something to say, say it, and stop when you are done."*

ANNE BROWN

*"Life is a flower of which love is the honey."*

PATTY BROWN

*"'Tis better to love one little boy lots, than lots of little boys little."*



JOANNE CALLIS

*"Good cheer is no hindrance to a good life."*

CHARLIE CLAIBORNE

*"Do not anticipate trouble or worry about what may never happen."*

HUGH ALLEN CRAIG

*"He's a quiet boy and shy, all in all an honest guy."*



LEMORAH DAVENPORT

*"It's better not to live than to be unhappy."*

JAMES DICKENS

*"Never do today what you can put off till tomorrow."*

JAMES DOBBS

*"I take my fun where I find it."*



JOE DOBBS

*"Why worry? Things are bound to happen anyway."*

LUCILLE DOBBS

*"I feel happy down deep—all is well."*

BETTY DYE

*"She is true to her work, her word, and her friends."*



JOE DAVID DYE

*"Let us enjoy the present; we shall have trouble enough hereafter."*

FRANK EMPSON

*"To listen well is as powerful a means of influence as to talk well."*

DAVID HARPER

*"Let me live in a house by the side of the road where pretty girls go by."*

HAROLD HARPER

*"The silent bear no witness against themselves."*

JAMES HARPER

*"A man of cheerful yesterdays and confident tomorrows."*

KENNETH HARPER

*"Worry is only interest paid on trouble before it becomes due."*





MRS. DORRIS

*"You don't have to be big to be boss—ask Mr. Dorris."*

JOAN HART

*"I would look up, and laugh, and love, and live."*

PEARL HEADY

*"The opportunity to do mischief is found a hundred times a day."*

LLOYD HESTER

*"Never trouble trouble till trouble troubles you."*

JUANITA HUNTER

*"She smiles and the whole world smiles with her."*

REBECCA HURT

*"Silence is often more eloquent than words."*

WANDA KIRKHAM

*"The great thing in this world is not so much where we are, but in what direction we are moving."*

CARLEEN KNOWLES

*"Who can fail to say, she is my friend?"*

JOE JONES

*"Why worry? Things are bound to happen anyway."*

NOEL LANE

*"In spite of all the learned have said, I still my own opinions keep."*

CAREY LANIER

*"Not failure, but low aim is crime."*

GLORIA LINK

*"Wit is the salt of conversation, not the food."*

SHIRLEY LOVELL

*"To cultivate kindness is a valuable part of any life."*

SUE MARTIN

*"Not too serious, not too gay—but a rare good girl when it comes to play."*

JEAN MAYES

*"Grace is to the body, what good sense is to the mind."*

JOHNNIE McCORMACK

*"On the football field he set a wicked pace; but he was still faster in Cupid's race."*

CHARLES McGLOTHIN

*"What this country needs is a good ten cent dime."*

LANNY MOORE

*"If God can love us all, why can't I love a dozen?"*

JOYCE PATTON

*"Every man is a volume if you know how to read him."*

JAMES PAYNE

*"If ignorance is bliss, I'm a blister."*

ROBERT PEARSON

*"Unprepared and unconcerned—He goes to class and sometimes learns."*







JAMES PORTER

*"I like work; it fascinates me. I can sit and look at it for hours."*

JEANETTE PORTER

*"A face that can't smile is never good."*

CLYDE RIGGS

*"On their own merits modest men are dumb."*



WILLIAM ROARK

*"Courage is, on all hands, considered as an essential of high character."*

LEROY SIMPSON

*"Thinking is the hardest work there is—they say."*

ALBERTA STREET

*"Quietly she works away, faithful to each duty."*



BOBBY TORRENTS

*"Little things are great to little men."*

MAURICE UTLEY

*"If life is worth living, it is worth enjoying."*

SUE VANATTA

*"My heart is warm with the friends I have made."*



THELMA WAKEFEILD

*"Best be yourself—good and true."*

DAN WEST

*"There is only one thing I know and that is that I know nothing."*

LOIS WEST

*"A small voice is better than a big echo."*



LESS WISEMAN

*"He who seeks the truth should be of no country."*

CLYDE WOODALL

*"Men give away nothing so liberally as their advice."*

GOLDIE WOODALL

*"A light heart lives long."*



JOHN WOODARD

*"No dull class with him in it."*

HAROLD YOUNG

*"A little of everything and not much of anything."*

## JUNIOR CLASS

*"Although through our high school career, we have had a reputation as a green, silly and jolly class, we shall soon become another dignified class to leave the portals of S.C.H.S."*





Sophomores

Barbara Groves  
Treas.

Lorene Williams  
Vice-Pres.

Sonny Pond  
Pres.

Sue Graves  
Sec.





Clarice Adams  
Marguerite Armstrong



Mildred Cardwell  
*Sponsor*



Jane Bell  
Paul Bolding

James Collins  
John P. Crafton



Lorene Bradley  
Bonnie Briley

Yvonne Cummings  
June Deasy



Harold Briley  
Doris Brown

Bobby Denning  
Harold Denning



Marie Brown  
Rhea Chandler

Kenneth Dorris  
Thomas Eidson



Laura R. Claiborne  
Donald Collins

Mary Ferguson  
Billy Freeland







H. L. Gregory  
*Sponsor*



Sue Graves  
Barbara Groves



Joyce Freeland  
Dudley Gant



Addie P. Hammond  
Perry L. Harper



Eugene Garrett  
Glen Glover



Joan Harris  
Ray Hodges



Grace Goforth  
Paul Gray



Joel Jackson  
Daphydean Jenkins



Florine Gregory  
Rebecca Gregory



Jimmy Johnson  
David Jones



Wayne Gregory  
Betty Graves



Magdalene Keene  
Virginia Kepley







David Kirkham  
Larry Law

Alice Shirrell  
Charles Stout



James Leath  
Evelyn Legge

Juanita Street  
Juanita Wallace



Beatrice Long  
Florence McCloud

Mary E. Webb  
Bobby White



Edna McCormack  
Bobby Neal

Jack White  
Frank Wilkes



Max Oldham  
Sonny Pond

Charles Williams  
Jane Williams



Minnie L. Perdue  
Harold Ragan

Lorene Williams  
Mary E. Williams







*Freshmen*

*Norman Lane Sara Dye Allen Jones*

Pres.

Sec.-Treas.

Vice-Pres.



# FRESHMAN CLASS

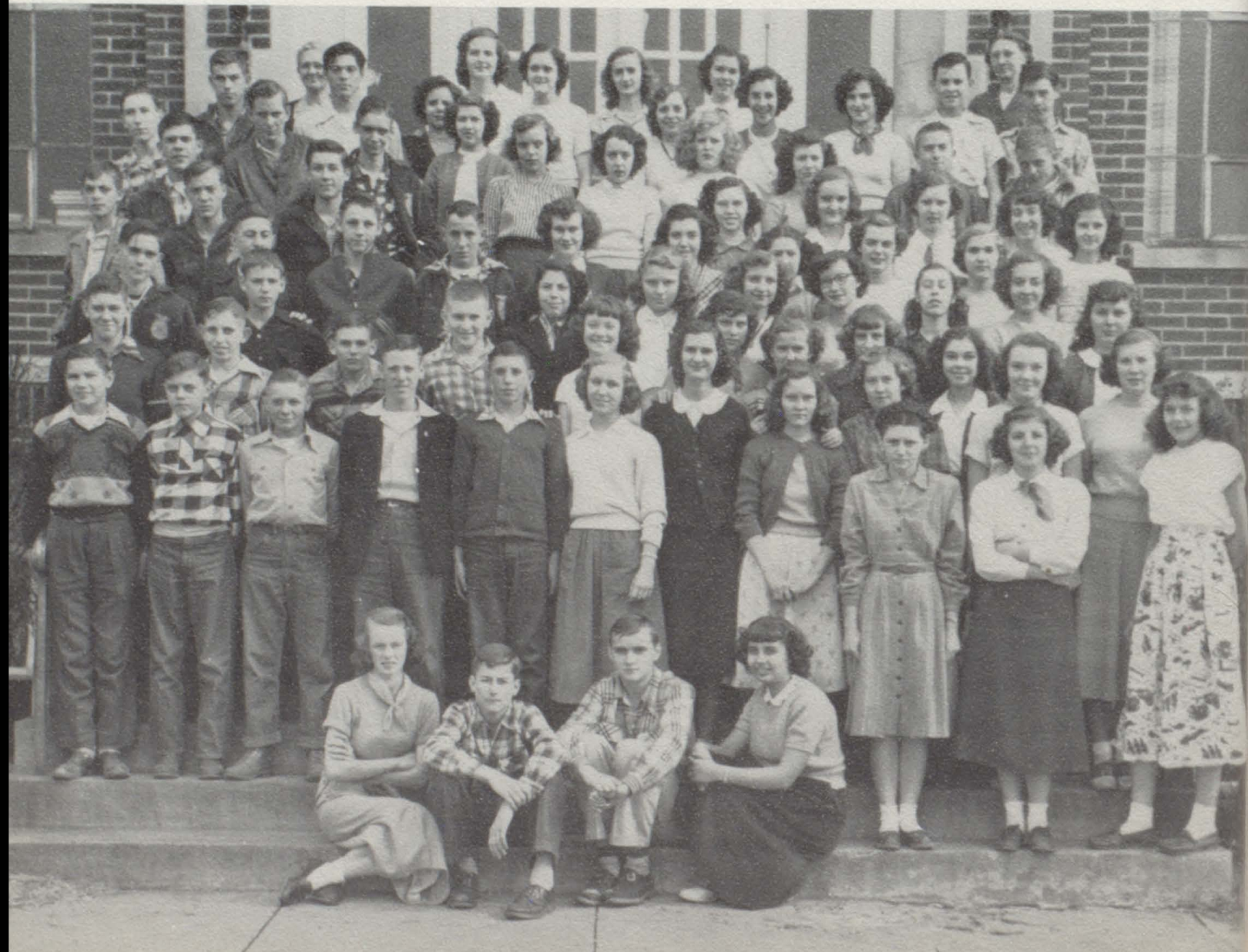
Norman Lane ..... *President*  
Allen Jones ..... *Vice President*  
Sara Dye ..... *Secretary and Treasurer*

Adams, T.  
Aldridge, W.  
Atchison, R.  
Ausbrooks, B.  
Ausbrooks, M.  
Beaty, J.  
Bradley, M.  
Briley, T.  
Brown, W.  
Carter, R.  
Casteel, T.  
Civils, B.  
Crafton, H.  
Craigge, C.  
Cummings, D.  
Cummings, P.  
Davis, C.  
Deasy, F.

Dillard, R.  
Douglas, B.  
Elliott, J.  
Escue, B.  
Forbis, B.  
Franklin, D.  
Freedle, B.  
Gentry, B.  
George, J.  
Gourley, J.  
Graves, J.  
Gray, B.  
Gregory, L.  
Hall, F.  
Hardison, B.  
Hardison, B.  
Harper, T.  
Harris, B.  
Henson, P.

Hester, J.  
Hobby, A.  
Hornburger, N.  
Hunter, B.  
Jenkins, E.  
Keen, P.  
Kirkham, L.  
Knight, F.  
Knowles, S.  
Lamberth, J. R.  
Lamberth, W.  
Lancaster, J.  
Lanier, D.  
Lee, J.  
Lee, M.  
Lee, Y.  
Link, A.  
Link, S.  
Martin, H.

Mee, O.  
Moye, S.  
McDowell, H.  
McDougal, C.  
McGlothlin, C.  
McGlothlin, M.  
Parker, M.  
Payne, J.  
Perdue, D.  
Poole, M.  
Riggsbee, B.  
Stinson, J.  
Thompson, J. C.  
Vaughn, H.  
White, B.  
Wilkinson, S.  
Wiseman, J.  
Woodward, J.





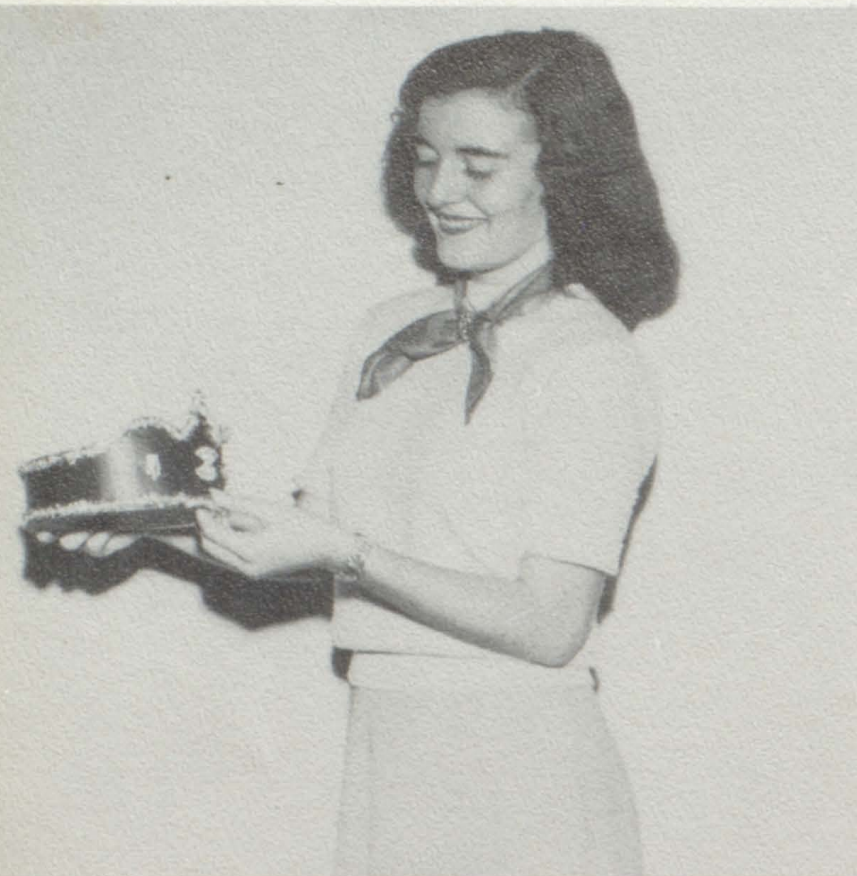
# Outstanding



Dot Wilkinson and Robert Brown ..... Seniors  
Alberta Street and Noel Lane ..... Juniors  
Juanita Wallace and Glen Glover ..... Sophomores  
Sara Frances Knowles and Joe Elliott ..... Freshmen



# Royalty



WANDA WALLACE—Football Queen



SHIRLEY LINK—FFA Queen





Sports



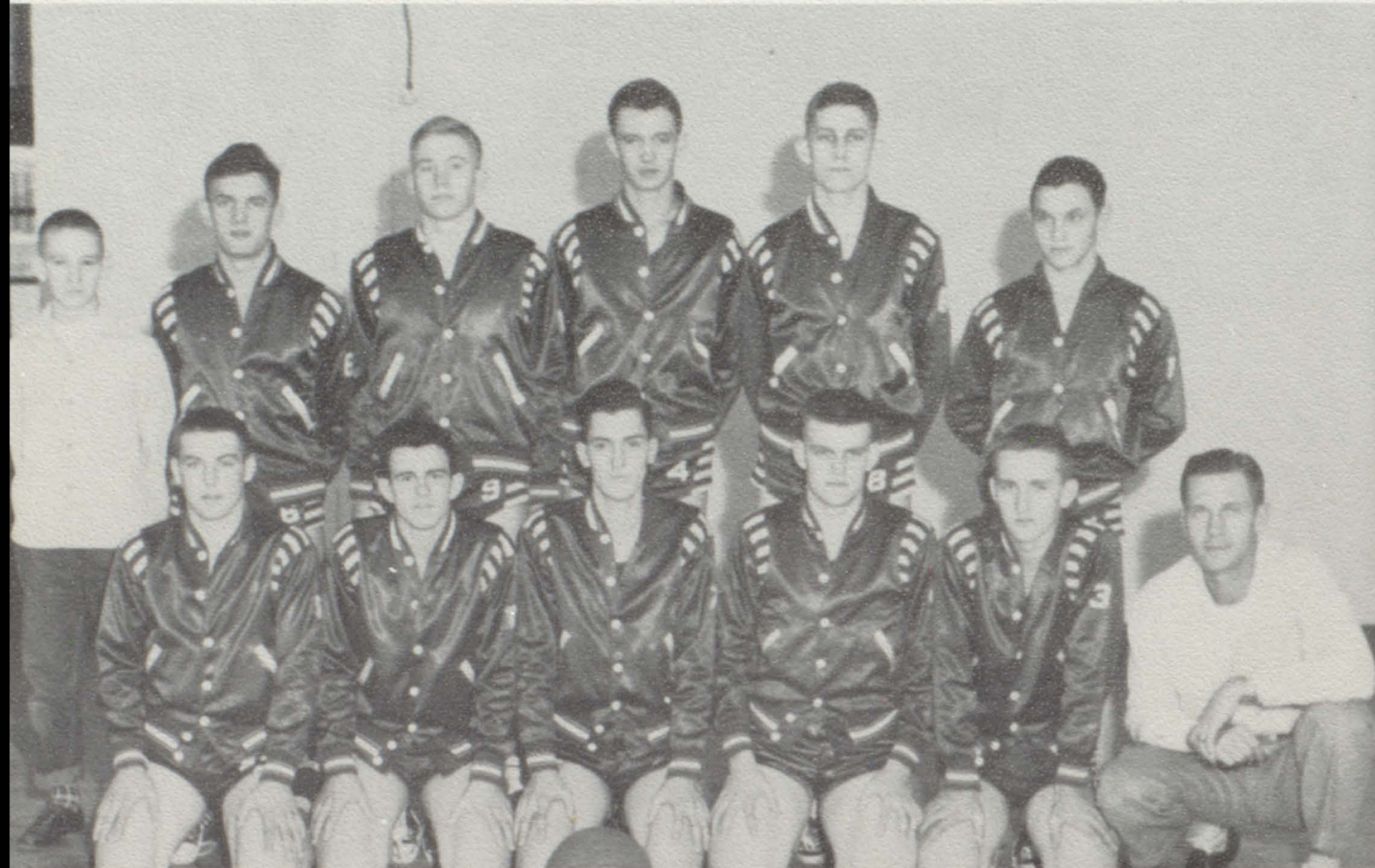
# BOYS BASKETBALL



Bert Anglea  
Forward



Jim Jones  
Forward



Larry Johnson—*Captain*  
Guard

Charles Wilson  
Center

David Farmer  
Guard







Jeanette Freeland  
*Captain*



Lucille Dobbs



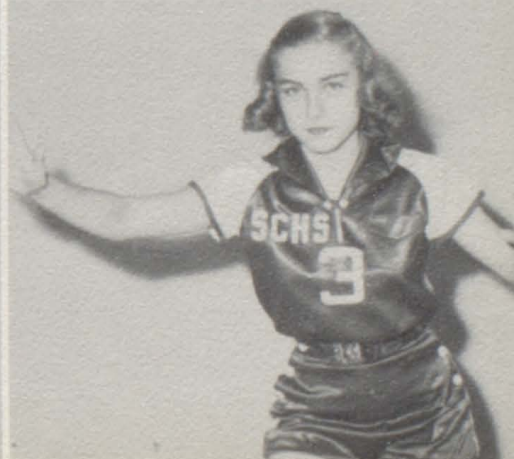
Doris Brown



Frances Hunnicutt

Joyce Patton

Dot Wilkinson  
*Co-Captain*





# Cheerleaders



Wanda Wallace

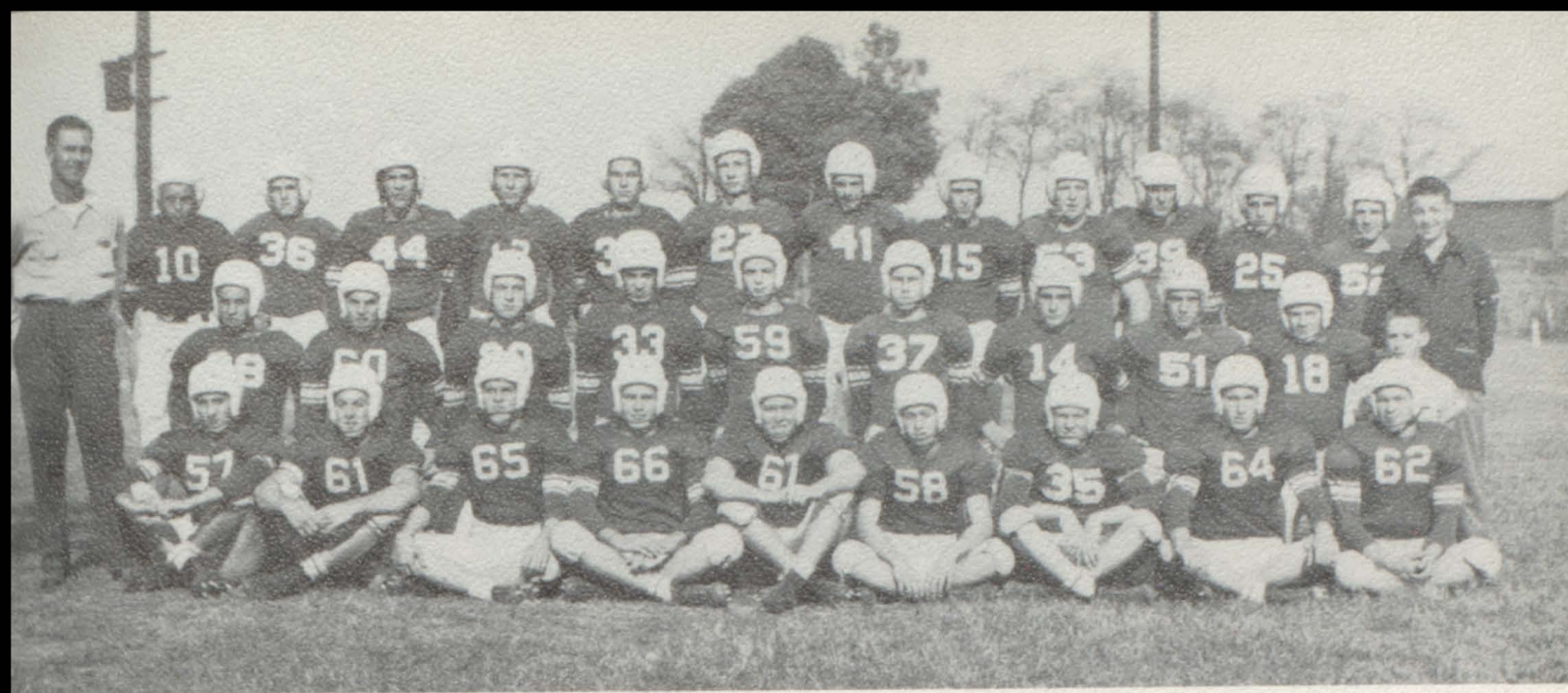
Juanita Wallace  
Joyce Freeland

Dot Wilkinson  
Captain

Jean Mayes  
Carol McGlothlin

Rebecca Gregory





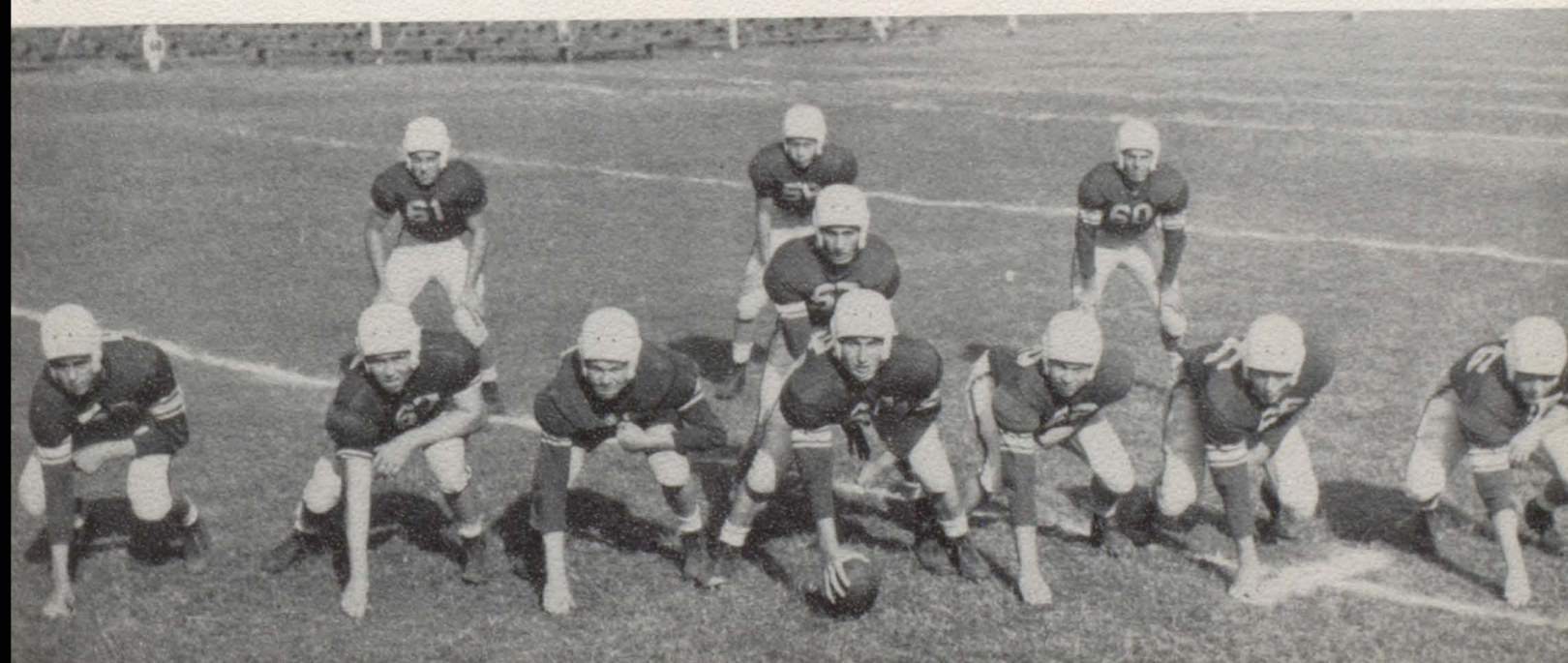
Back row: Coach McDonald, Forbis, Wiseman, White, Hester, Ausbrook, Hodges, Freeland, Roark, Leath, Beaty, Wilkes, Collins, Manager Bolding.

Middle row: White, Glover, Harper, Dobbs, Lane, Moore, Harper, Law, Collins, Manager Johnson.

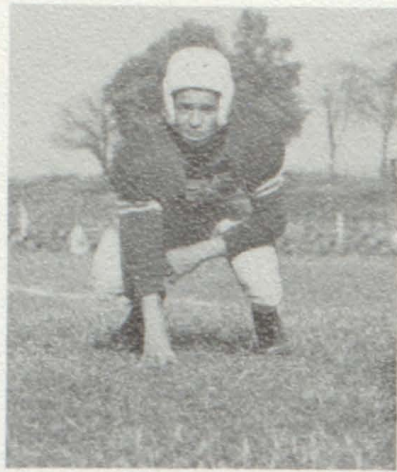
Front row: Johnson, Farmer, Anglea, McCormack, Bell, Neal, Collins, Leath, Collins.

### SCHEDULE

Portland.....	0	Russellville .....	12
Portland.....	41	Watertown .....	0
Portland.....	0	Central .....	21
Portland.....	7	Lebanon .....	25
Portland.....	13	Hendersonville .....	0
Portland.....	34	Carthage .....	0
Portland.....	13	Mt. Pleasant .....	6
Portland.....	6	Hartsville .....	6
Portland.....		M. B. A. (Cancelled).....	
Portland.....	37	Lafayette .....	7
Portland.....	6	Gallatin .....	6







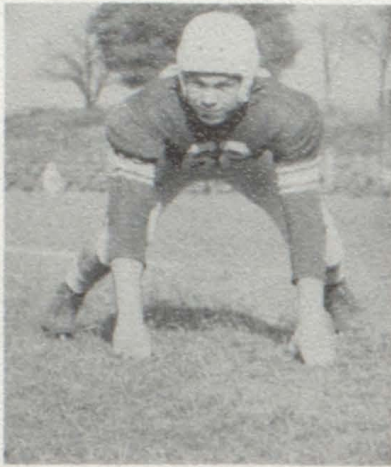
Bobby White  
Right Halfback



Larry Johnson  
Quarterback



Joe Collins—*Captain*  
Right Guard



Larry Collins  
Left Guard



Douglas McDonald  
*Coach*



David Harper  
Right Tackle



Johnny McCormack  
Left Tackle



Bert Anglea  
Right End



Lanny Moore  
Left End

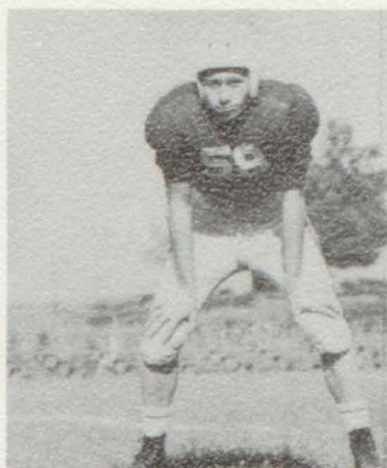




Donnell Leath—*Co-Captain*  
Center



Glenn Glover  
Left Halfback



Bobby Neal  
Fullback



Paul Bolding, Jimmy Johnson  
*Managers*



David Farmer  
Right Halfback



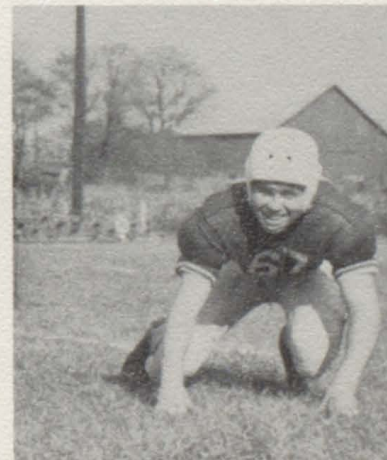
Jim Collins  
Right Guard



Joe Dobbs  
Right End



Noel Lane  
Left End



Harold Bell  
Right Tackle









Club

Larry Collins  
F.F.A.

Jane Dye  
Thespian Troupe

Mary Jo Perdue  
Language

Joe Collins  
Letter

Noel Lane  
Student Council

Jane Briley  
Commercial

Joyce Woodard  
Glee Club

Larry Lanier  
Beta

Pattie Sue Stinson  
F.H.A.



## STUDENT COUNCIL

Noel Lane ..... *President*

Robert Brown ..... *Vice President*

Yvonne Cummings ..... *Secretary-Treasurer*

Alberta Street, Sara Dye  
Sonny Pond, Joe Elliott, Mary Jo Perdue







Jane Briley



Anne Brown



Mary Callis



Eleanor Martin



Clyde Riggs



Patty S. Stinson



Doris Brown



Joan Callis



Alberta Street



Laura Claiborne



Yvonne Cummings



Thelma Wakefield

## BETA CLUB

Carey Lanier  
*President*

Patty Stinson  
*Vice President*

Dot Wilkinson  
*Secretary*

Frances Hunnicutt  
*Treasurer*

Mrs. Hunnicutt  
*Sponsor*



Betty Dye



Jane Dye



Frank Empson



Juanita Wallace



Joyce Freeland



Frances Hunnicutt



Wanda Wallace



Eurie J. Jenkins



Wanda Kirkham



Mary E. Webb



Carol Knowles



Noel Lane



Carey Lanier



Joyce Woodard



Mary E. Williams



Dot Wilkinson



# FUTURE FARMERS

Larry Collins—*President*  
 Joe Dobbs—*Vice President*  
 David Farmer—*Secretary*

William Roark—*Treasurer*  
 David Harper—*Reporter*  
 Johnnie McCormack—*Sentinel*



Atchison, Thomas  
 Ausbrooks, Bobbie  
 Bennett, Wayne  
 Briley, Harold  
 Briley, Lonnie  
 Briley, Talmadge  
 Castell, Truman  
 Chandler, Ray  
 Claiborne, Charlie  
 Collins, Donald  
 Collins, James  
 Collins, Larry  
 Crafton, Herman  
 Crafton, John  
 Craig, Hugh A.  
 Cummings, David  
 Denning, Bobby

Dickens, James  
 Dobbs, James  
 Dobbs, Joe  
 Duffer, Wayne  
 Dye, Joe D.  
 Eidson, Thomas  
 Farmer, David  
 Fisher, Charles  
 Freeland, Billy  
 Garrett, Eugene  
 Glover, Glen  
 Gray, Bobby  
 Gray, Paul  
 Gregory, Wayne  
 Hall, Forest  
 Hardison, Billy  
 Harper, David  
 Harper, Harold  
 Harper, James

Harper, Kenneth  
 Harper, Perry  
 Harper, Thurman  
 Harris, Billy  
 Hodges, Ray  
 Jackson, Joel  
 Johnson, Jimmy  
 Jones, Allen  
 Jones, David  
 Jones, Joe  
 Kirkham, David  
 Lambert, Wayne  
 Law, Larry  
 Leath, Donnell  
 Leath, James  
 McCormack, Johnnie  
 McDougal, Charles  
 McGlothlin, Charles  
 Oldham, Max

Payne, James  
 Payne, John  
 Roark, William  
 Stout, Charles  
 Tarrants, Bobby  
 Thompson, J. C.  
 Vaughn, Harold  
 West, Dan  
 White, Billy  
 White, Bobby R.  
 White, Bobby W.  
 Williams, Charles  
 Wilson, Charles  
 Wiseman, Les  
 Woodall, Clyde  
 Woodall, Jimmy  
 Woodward, John  
 Young, Harold



# FHA

Pattie Stinson—*President*

Carleen Knowles—*Vice President*

Lorene Williams—*Secretary*

Eurie J. Jenkins—*Treasurer*

Eleanor Martin—*Reporter*

Mary Callis—*Song Leader*



Adams, T.  
Aldridge, W.  
Ausbrooks, M.  
Bradley, L.  
Bradley, M.  
Briley, B.  
Brown, H.  
Brown, M.  
Brown, P.  
Brown, W.  
Callis, J.  
Civils, B.  
Craige, C.  
Cummings, P.  
Cummings, R.  
Davis, C.  
Deasy, F.  
Dillard, K.  
Dillard, M.  
Dillard, N.  
Dobbs, L.  
Dobbs, S.

Douglas, B.  
Dye, S.  
Ferguson, M.  
Franklin, D.  
Fredle, D.  
Freeland, J.  
Freeland, J.  
George, J.  
Goforth, G.  
Gourley, J.  
Gregory, F.  
Gregory, L.  
Gregory, R.  
Groves, B.  
Hardison, B.  
Hammond, A.  
Harris, J.  
Heady, P.  
Henson, P.  
Hodby, A.  
Hornberger, N.  
Hughes, B.

Hunter, B.  
Hunter, J.  
Jenkins, D.  
Jenkins, E.  
Keene, M.  
Keene, P.  
Kepley, V.  
Kirkham, L.  
Knight, F.  
Knowles, F.  
Lancaster, J.  
Lee, J.  
Lee, M.  
Lee, Y.  
Legge, E.  
Link, A.  
Link, C.  
Link, S.  
Long, B.  
Lovell, S.  
Martin, S.  
Mays, J.

McDowell, C.  
McCloud, F.  
McCormack, E.  
McGlothin, M.  
McGlothin, C.  
Mee, O.  
Moye, O.  
Parker, M.  
Patton, J.  
Perdue, D.  
Perdue, M.  
Poole, M.  
Riggsbee, B.  
Shirrell, A.  
Stinson, J.  
Vanatta, S.  
Wakefield, T.  
Wallace, J.  
West, L.  
Wilkinson, S.  
Williams, J.  
Williams, M.



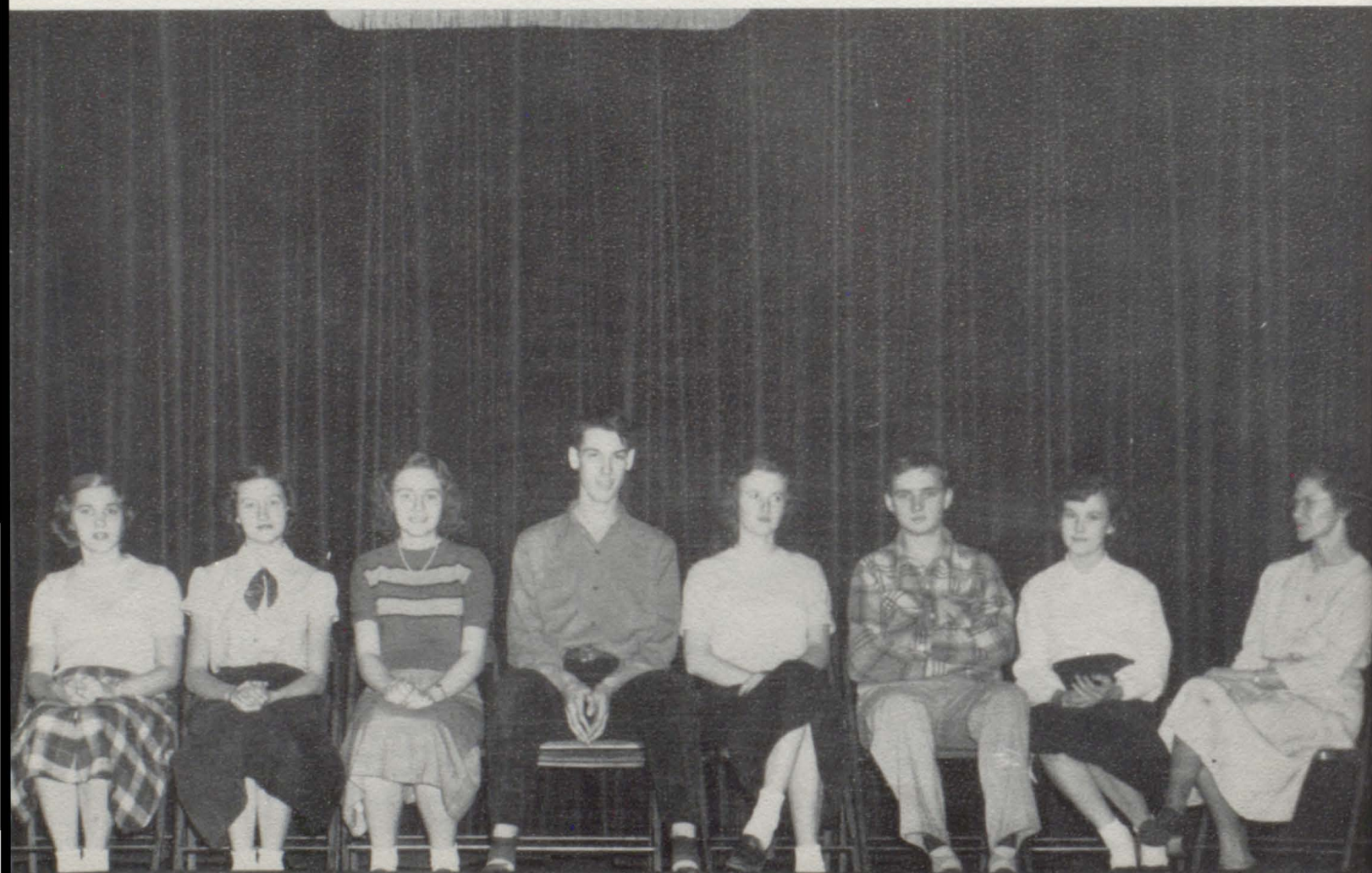
## DEBATE

Jane Dye  
Billy Riggs

Thomas Atchison  
Wanda Kirkham

Alberta Street  
Shirley Link  
Norman Lane  
June Deasy

Mrs. Hunnicutt—*Sponsor*





## SCIENCE CLUB

Jane Dye ..... *President*  
Frances Hunnicutt ..... *Vice President*  
Dot Wilkinson ..... *Secretary-Treasurer*

Wilma Aldridge  
Bert Anglea  
Wayne Bennett  
Mary Bradley  
Anne Brown  
Doris Brown  
Mary Callis  
Yvonne Cummings  
Jane Dye  
Sara Dye

Barbara Freedle  
Rebecca Gregory  
Wayne Gregory  
James Harper  
Kenneth Harper  
Joe Hester  
Lloyd Hester  
Alberta Hobby  
Frances Hunnicutt  
Noel Lane  
Lanny Moore

Stanley Nesbitt  
Clyde Riggs  
Juanita Street  
Maurice Utley  
Juanita Wallace  
Wanda Wallace  
Mary Elizabeth Webb  
Dot Wilkinson  
Sue Wilkinson  
Joyce Woodard  
John Woodward







## LANGUAGE CLUB

Mary Jo Perdue..... *President*

Wanda Wallace..... *Vice President*

Dot Wilkinson..... *Secretary and Treasurer*

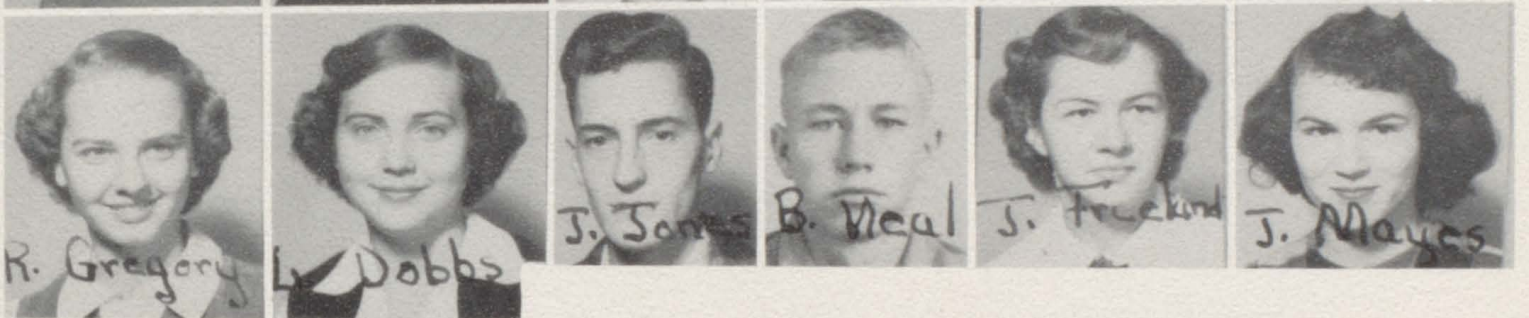
Mrs. Moore  
Mrs. Jernigan  
*Sponsors*

Jane Bell  
Harold Bell  
Jane Briley  
Doris Brown  
Yvonne Cummings  
June Deasy  
Betty Dye  
Peggy Franklin  
Jeanette Freeland

Betty George  
Mary Sue Graves  
Joan Hart  
Rebecca Hurt  
Larry Johnson  
Wanda Kirkham  
Era Link  
Shirley Link

Johnny Merritt  
Stanley Nesbitt  
Mary Jo Perdue  
Jean Ragan  
Clyde Riggs  
Juanita Street  
Wanda Wallace  
Mary E. Webb  
Dot Wilkinson





## LETTER CLUB

Joe Collins	.....	President
Larry Johnson	.....	Vice President
Dot Wilkinson	.....	Secretary
Larry Collins	.....	Treasurer



# SCHS



N. F. L. AND THESPIAN TROUPE NO. 564

## N. F. L.

Rebecca Gregory	<i>President</i>
Bert Anglea	<i>Vice President</i>
Alberta Street	<i>Secretary</i>
Joyce Freeland	<i>Treasurer</i>

## THESPIAN TROUPE

Jane Dye	<i>President</i>
Pattie Stinson	<i>Vice President</i>
Dot Wilkinson	<i>Secretary</i>
Rebecca Hurt	<i>Treasurer</i>

Anglea, Bert  
 Brown, Anne  
 Briley, Jane  
 Callis, Mary  
 Dye, Jane  
 Dye, Joe  
 Freeland, Jeanette  
 Freeland, Joyce  
 Gregory, Rebecca  
 Hunnicutt, Frances  
 Hurt, Rebecca  
 Knowles, Carleen  
 McCormack, Edna  
 Pond, Sonny  
 Riggs, Clyde  
 Street, Alberta  
 Stinson, Pattie Sue  
 Utley, Maurice  
 Wilkinson, Dot

Anglea, Bert  
 Brown, Anne  
 Briley, Jane  
 Callis, Mary  
 Dye, Jane  
 Dye, Joe  
 Freeland, Jeanette  
 Gregory, Rebecca  
 Hunnicutt, Frances  
 Hurt, Rebecca  
 Knowles, Carleen  
 Riggs, Clyde  
 Street, Alberta  
 Stinson, Pattie Sue  
 Utley, Maurice  
 Wilkinson, Dot





## COMMERCIAL CLUB

Jane Briley .....	<i>President</i>
Wanda Kirkham .....	<i>Vice President</i>
Betty George .....	<i>Secretary and Treasurer</i>
Sue Dobbs .....	<i>Reporter</i>
Miss Cardwell .....	<i>Sponsor</i>

Briley, J.  
Brown, A.  
Callis, M.  
Cummings, R.  
Dillard, M.  
Dobbs, S.  
Dye, J.  
Freeland, J.  
George, B.  
Hart, J.

Heady, P.  
Hunnicut, F.  
Hurt, R.  
Hunter, J.  
Jenkins, E.  
Jones, C.  
Kirkham, W.  
Knowles, C.  
Lovell, S.  
Martin, E.

Martin, S.  
Patton, J.  
Pearson, R.  
Porter, J.  
Ragan, J.  
Stinson, P.  
Wallace, W.  
Wilkinson, D.  
Woodard, J.





## PURPLE HERALD STAFF

Frances Hunnicutt.....	<i>Editor</i>
Jane Briley.....	<i>Assistant Editor</i>
Joyce Woodard.....	<i>Business Manager</i>
Charlie Jones.....	<i>Publication Manager</i>
Eurie Jean Jenkins.....	<i>Feature Editor</i>
Wanda Wallace.....	<i>Art Editor</i>
Jeanette Freeland.....	<i>Sports Editor</i>
Juanita Hunter.....	<i>Joke Editor</i>
Jean Ragan.....	<i>School Chatter</i>
Jane Dye.....	<i>Senior Reporter</i>
Frank Empson.....	<i>Junior Reporter</i>
Barbara Graves.....	<i>Sophomore Reporter</i>
Fayola Deasy.....	<i>Freshman Reporter</i>
Miss Cardwell.....	<i>Advisor</i>





## GLEE CLUB

### ALTO

Adams, T.  
 Briley, J.  
 Brown, A.  
 Brown, D.  
 Claiborne, L.  
 Cummings, Y.  
 Dillard, M. E.  
 Dillard, N. R.  
 Douglas, B.  
 Dye, J.  
 George, B.  
 Hardison, B. J.  
 Hunnicutt, F.  
 Jenkins, E.  
 Lee, Y.  
 Link, S.  
 McDowell, C.  
 Poole, M.

### SECOND SOPRANO

Civils, B.  
 Deasy, J.  
 Dobbs, S.  
 Dye, S.

Ferguson, M.  
 Freeland, J.  
 Gregory, R.  
 Harris, J.  
 Patton, M.  
 Woodard, J.

### SOPRANO

Armstrong, M.  
 Bell, J.  
 Bradley, L.  
 Brown, P.  
 Brown, W.  
 Callis, J.  
 Callis, M.  
 Deasy, F.  
 Franklin, P.  
 Freedle, B.  
 George, J.  
 Graves, M. S.  
 Hart, J.  
 Knowles, C.  
 Knowles, S. F.  
 Link, A.

Link, E.  
 Long, B.  
 Lovell, S.  
 Martin, S.  
 McCloud, F.  
 McGlothlin, C.  
 Utley, M.  
 Wallace, W.  
 Wilkinson, D.  
 Wilkinson, S.  
 Williams, L.

### BASS

Anglea, B.  
 Atchison, R.  
 Atchison, T.  
 Bennett, W.  
 Brown, J.  
 Collins, J.  
 Claiborne, C.  
 Farmer, D.  
 Gentry, B.  
 Gray, P.  
 Harper D.

Heady, P.  
 Hester, J.  
 Hester, L.  
 Johnson, L.  
 Lane, N.  
 Neal, B.  
 Nesbitt, S.  
 Ragan, H.  
 White, J.  
 Wilson, C.  
 Woodward, J.

### TENOR

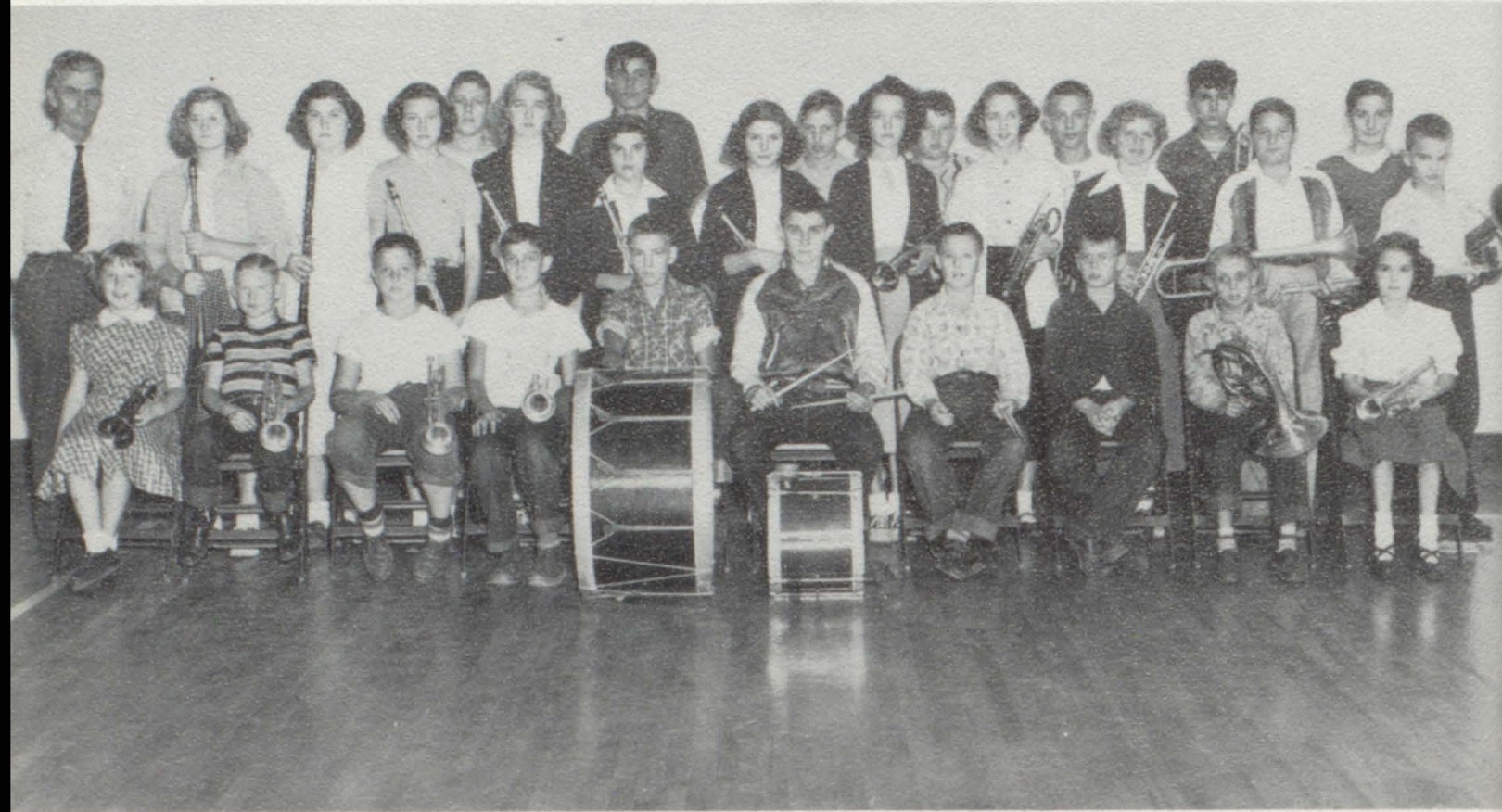
Beaty, J.  
 Elliott, J.  
 Forbis, B.  
 Graves, J.  
 Hardison, B.  
 Kirkham, D.  
 Lamberth, W.  
 Lanier, D.  
 Moore, L.  
 Wiseman, J.  
 Woodward, J.





MR. WAYNE TYREE

*Director*



Armstrong, Austin, Briley, Brown,  
Burke, Clubbs, Crafton, Empson, Gen-  
try, Graves, Harris, Jernigan, Jones,  
Kelly, Lanier, McClanahan, McClana-  
han, Morgan, Oldham, Perdue, Phillips,  
Poole, Poole, Ragan, Searcy, Short,  
Street, Street, Wallace, Wise.











# PLANTERS' LOOSE LEAF FLOOR

## One & Two

Burley and One Sucker

FRANKLIN, KY.

Paul Jackson  
Judge Phillips

Notley Smith  
Hal Jackson

<p>GOAD'S SERVICE STATION Goodyear Tires - Batteries Texaco Products Portland, Tenn. Phone 3432</p>	<p>Compliments of CHANDLER'S STORE Portland, Tenn.</p>
<p>Compliments of CONSUMERS' DRUG CO. The Rexall Store Portland, Tenn. Phone 3727</p>	<p>Compliments of A FRIEND</p>
<p>Compliments of W. L. BENTLEY'S 5 and 10 cent store Portland, Tennessee We Extend Congratulations, Seniors</p>	<p>Compliments of TENN. DR. PEPPER BOTTLING CO.</p>
<p>Compliments of JERNIGAN'S GROCERY Phone 3412 Portland, Tennessee</p>	<p>GORDON'S Fresh Potato Chips Trucks Serving the Best Gordon Foods, Inc.</p>
<p>BOOKER'S STORE Ladies' and Men's Furnishings Portland, Tennessee</p>	<p>Eat TOM'S TOASTED PEANUTS Jim Underhill, Salesman</p>
<p>Compliments of SHANNON'S FIRESTONE STORE Home &amp; Auto Supplies Portland Tennessee</p>	<p>Compliments of PORTLAND COAL &amp; SUPPLY CO. Phone 3454 Portland, Tenn.</p>
<p>Compliments of YOUNG DRUG COMPANY "Your Prescription Store" Phone 2012 Portland, Tenn.</p>	<p>HILL LUMBER CO. Manufacturers of Hardwood Lbr. &amp; Building Materials Flooring—Weatherboarding—Ceiling Portland Mill Work Phone 2061</p>
<p>APPLIANCE &amp; ELECTRIC CO. Television Headquarters Portland Tennessee</p>	<p>LEE'S SERVICE STATION &amp; GARAGE Mechanical Works—Sinclair Products Portland, Tenn.</p>



# SIMPSON CO. LOOSE LEAF FLOORS

Burley and Air Cured  
 "THE HOUSE THAT SATISFIES"  
 Franklin, Ky.

D. W. Billingslea

Lewis Rutherford

<p>Compliments of                  CRESCENT HILL MILK SERVICE                  Gallatin, Tenn.</p>	<p>CRESCENT FURNITURE COMPANY                  Sumner County Hotpoint Dealer                  Gallatin, Tenn.</p>
<p>Compliments of                  KRAFT FOODS                  Portland and Gallatin</p>	<p>BRADLEY'S                  On The Square                  Gallatin, Tenn.</p>
<p>Compliments of                  MODERN EQUIPMENT COMPANY                  Your International Harvester Dealer                  West Main Street Gallatin, Tenn.</p>	<p>Compliments of                  AARON'S                  Gallatin, Tenn.</p>
<p>YOUR ROXY THEATRE                  Franklin, Kentucky                  Always the Best in all Ways</p>	<p>BLUE'S JEWELRY STORE                  Diamonds — Watches                  and Jewelry                  Phone 187 Gallatin</p>
<p>WADE MOTOR CO.                  Only Authorized Ford Dealer in                  Sumner County                  We Appreciate Your Business                  Gallatin, Tenn.</p>	<p>FACTORY OUTLET STORE                  "Save on Shoes and Work Clothing"                  Gallatin Portland</p>
<p>Compliments of                  NATIONAL STORE                  Family Saving Store                  Gallatin, Tenn.</p>	<p>Compliments of                  HESTER MOTOR CO.                  Gallatin Tennessee</p>
<p>Compliments of                  SHORT'S LAUNDRY &amp; DRY CLEANERS                  Phone 3850 Portland, Tenn.</p>	<p>Compliments of                  REDDICK'S BARBER SHOP                  Portland, Tenn.</p>
<p>Compliments of                  THE WAGON WHEEL CAFE                  Portland, Tenn.</p>	<p>Compliments of                  FRED BRIZENDINE                  Groceries — Meats — Vegetables                  Portland, Tenn.</p>



# HUBERT CREASEY LUMBER CO.

Service & Satisfaction

West Main Street

Phone 44

FRANKLIN, KY.

Compliments of V. G. HAWKINS Superintendent of Sumner County Schools	SLOSS TRACTOR REPAIR Massey Harris Machinery Phone 681 Franklin, Ky.
Compliments of LAYON BROWN County Court Clerk of Sumner County	ENGLAND'S SERVICE STATION Gulf Accessories — Gulf Oils Phone 778 West Main St. Gallatin, Tenn.
Compliments of JAMES BROWN Tax Assessor	Compliments of ALBRIGHT TOBACCO WAREHOUSE Gallatin, Tenn.
You Save Your Money When You Trade At P & B SUPER MARKET Open Nights Until 8 o'clock Franklin, Ky.	Compliments of HUNTER PLUMBING & HEATING Lewis Hunter, Owner Gallatin, Tenn.
Compliments of FARMERS' ELEVATOR CO. Feeds, Seeds & Hatchery Franklin, Ky.	Compliments of SUMNER COUNTY CO-OPERATIVE CREAMERY Gallatin, Tenn.
YOKLEY MACHINE COMPANY George Yokley & Sons Distributors of National Cylinder Gas Welding Supplies Phone 287 Franklin, Ky.	Compliments of GALLATIN FLOWER SHOP
JENKINS & WYNNE MOTOR CO. Your Friendly Ford Dealer Franklin, Ky. See the New 1951 Ford "You can pay more but you can't buy a better car."	J. E. KERLEY & SONS Hardware, Furniture, Rugs Plumbing & Heating Supplies ELECTRICAL APPLIANCES and TELEVISION



Compliments of  
STARK'S STUDIO

GALLATIN, TENNESSEE

LERMAN BROS., INC.  
Franklin, Ky.  
"The Home of Weatherbird Shoes"

Compliments of  
NATIONAL STORES  
Franklin, Ky.

Everything for the Auto  
DODGE—PLYMOUTH—INTERNATIONAL  
Massey Motor Co.  
Franklin, Ky.  
"Stop to See Us"

Compliments of  
GILLISPIE DRY GOODS CO.  
Established 1900  
Franklin, Ky.

TARPLEY TAXI CAB CO.  
Phone 222  
Franklin, Ky.

HARPER FURNITURE CO.  
Gallatin, Tenn.

HUGHES HARDWARE CO.  
Established 1926 Franklin, Ky.  
Oliver Farm Equipment  
Everything in Hardware--- Sporting Goods  
Phone 58

GALLATIN BAG & MDSE. CO.  
Bags, Luggage, Jewelry, Hose,  
Office Supplies—School Supplies  
Shop Upstairs and Save!  
Gallatin Tennessee

BRIZENDINE & LANE  
Used Car Lot—Home of Fine Automobiles  
Any Make, Any Type, Any Color  
Franklin, Ky.

Compliments of  
PORTER W. WOMACK  
Registrar of Sumner County

Compliments of  
BLACK'S AETNA SERVICE  
Franklin, Ky.

PAYNE BROS. SEED CO.  
Garden & Field Seed  
Phone 757  
Gallatin Tennessee

FRANKLIN DRY GOODS CO.  
"We Have Bargains  
To Offer Every Day"  
Phone 500  
MR. and MRS. SHIRLEY CLAIBORNE,  
Managers

SIMPSON COUNTY  
SEED & FARMERS' COOP.  
Seed and Farm Supplies  
Franklin, Ky.




# L. G. BALFOUR CO.

Attleboro, Mass.

Class Rings & Pins — Commencement Invitations  
Diplomas—Personal Cards—Club Insignia—Memorial Plaques

REPRESENTATIVE: MR. IRVING HARRIS  
P.O. Box 469  
Jackson, Tenn.

Compliments of VAL R. LOVELL Distributor of Truli-Pure Products Nashville Pure Milk Co.	Compliments of SILVER BELL BEAUTY SHOPPE Mrs. Cecil Briley Phone 2323 Portland
Compliments of KELLY'S ESSO STATION Charles Kelly Oil & Gas—Atlas Tires & Batteries Phone 3966 Portland	Compliments of DEASY MACHINE CO. Portland, Tenn.
MOORE MOTOR CO. Sales & Service DeSoto Plymouth Portland, Tennessee	Compliments of H. M. GROTH CO. Nashville, Tenn.
ECONOMY SUPPLY CO. Furniture—Frigidaires—Appliances Portland, Tennessee	Drink COCA-COLA In Bottles
	Compliments of PEPSI-COLA BOTTLING CO.
Compliments of THE UPPER SUMNER PRESS Portland, Tenn.	Compliments of ROBERT ORR AND CO. Nashville, Tenn.
Compliments of PORTLAND PLANING MILL Portland Tenn. Phone 2050	Compliments of THE FARMERS BANK Member of F.D.I.C. Portland, Tenn.



SOUTHSIDE GROCERY  
PARKER SHOE SHOP  
JOE'S GRILL & BAKERY  
LAKE POTTS  
L. A. GREEN CO.  
FLOWERS & LUNDY  
NEW FARMERS' TOBACCO  
WAREHOUSE  
ANDERSON, YOWELL & RIPPY  
BLUE BIRD BEAUTY SHOP  
T. S. BUTT, COUNTY JUDGE  
SWEET SHOP  
JOHN W. PARKER  
BROWN & DALTON  
HAMMOND'S MARKET  
KENTUCKY GRILL  
CRUTCHER'S MKT.  
BRALY'S FOOD MKT.  
FRANKLIN GULF SERVICE  
PORTLAND HATCHERY  
BROWN'S GROCERY  
CULBREATH & RIGGS  
MOORE'S DEPT. STORE  
H. K. SHANNON, Insurance  
EVERETT ALDERSON  
J. C. HILL'S GROCERY  
ROARK'S STOP & SHOP MKT.  
CASH & CARRY MARKET







## *Students Everywhere*

Hundreds of thousands of students throughout the nation will treasure their *Taylor-made* Yearbooks for many years to come.

Thousands of teachers and school administrators welcome their *Taylor-made* Annuals as a necessary part of their Parent and Public relations program.

We are proud to have had a part in preserving the memories, traditions and achievements of the schools of America.

*Taylor Publishing Company*

*"Taylor-Made Means Better Annuals"*

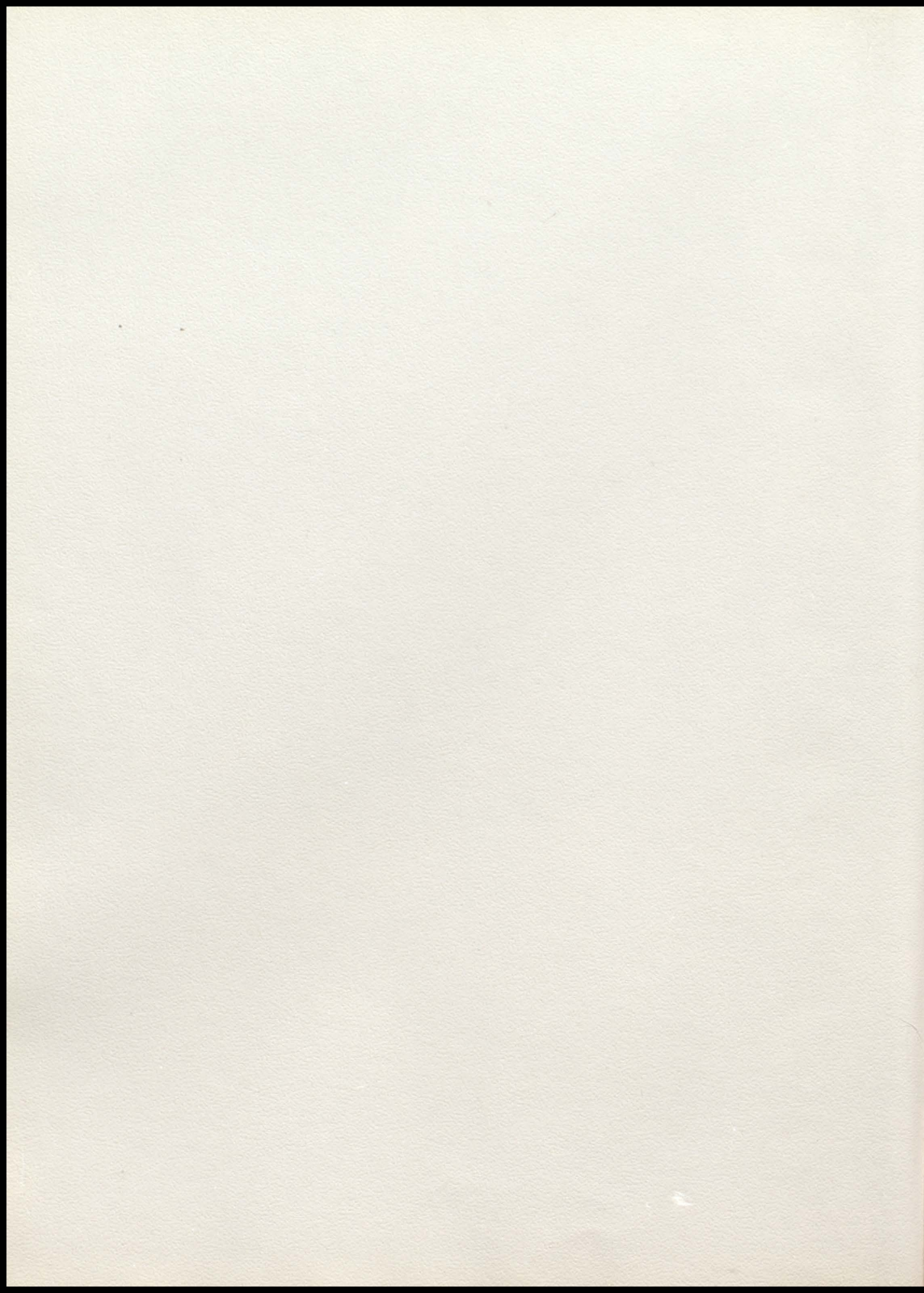
**TAYLOR PUBLISHING COMPANY**

6320 DENTON DRIVE

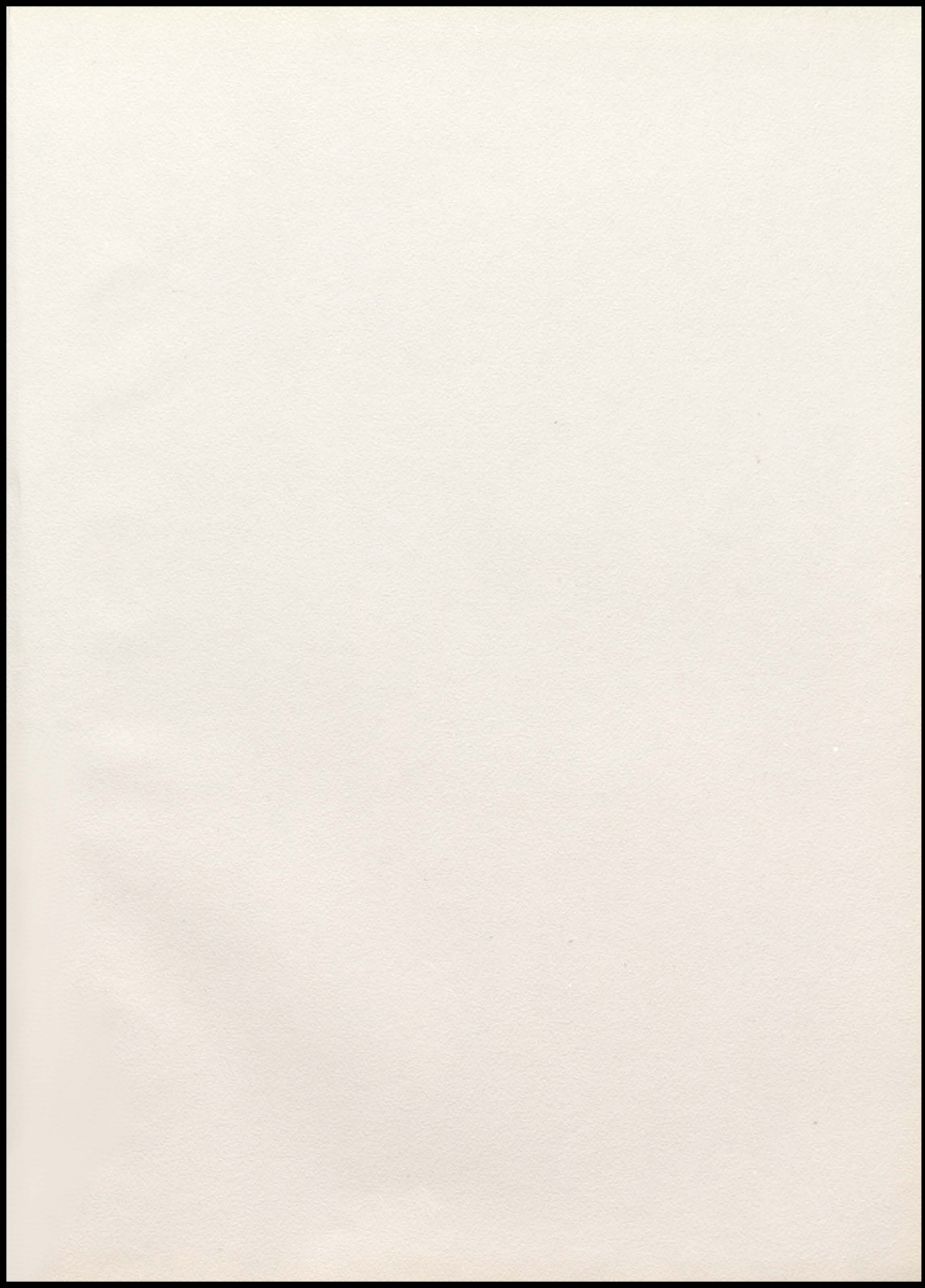
BOX 597

DALLAS, TEXAS

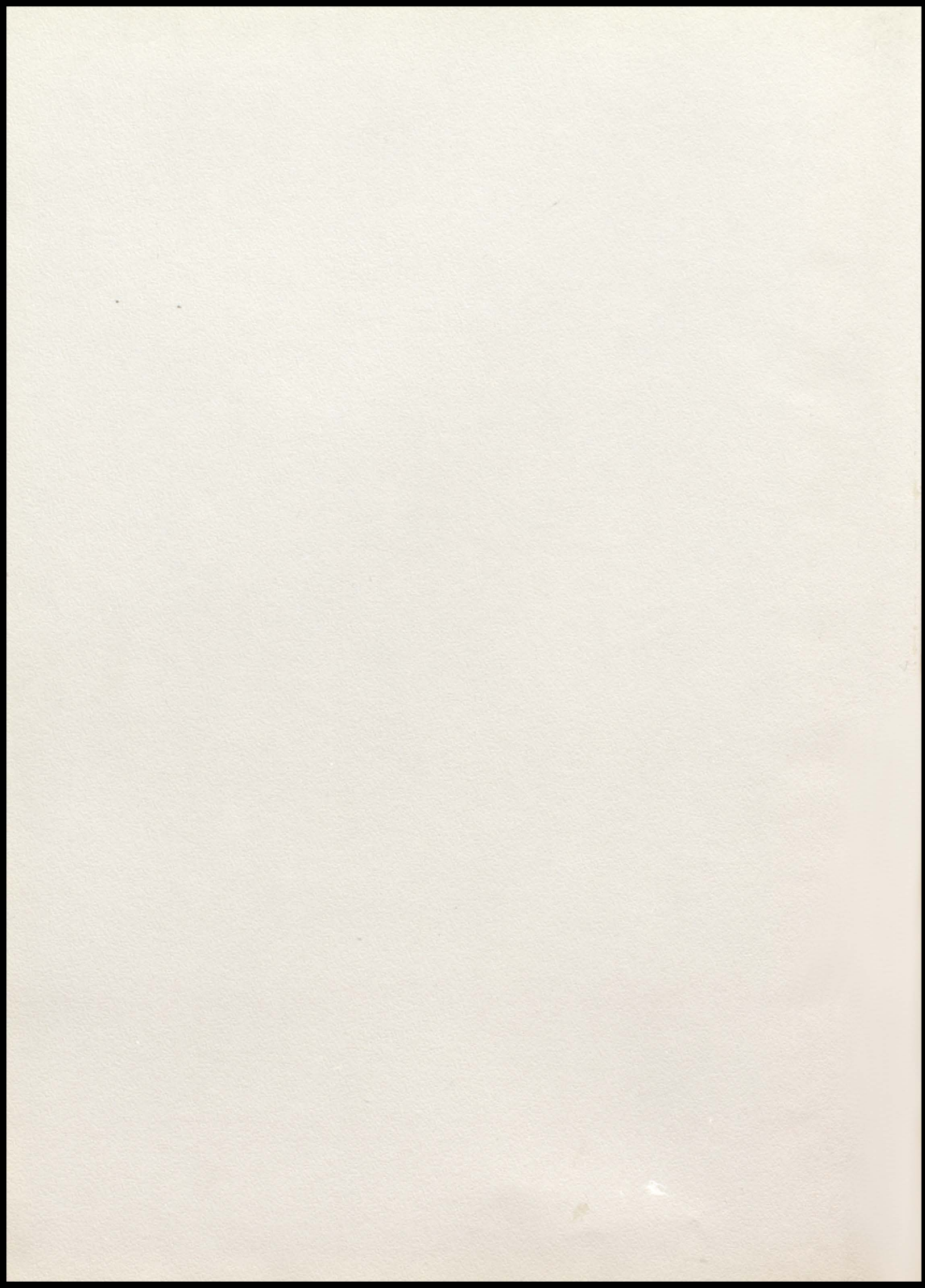




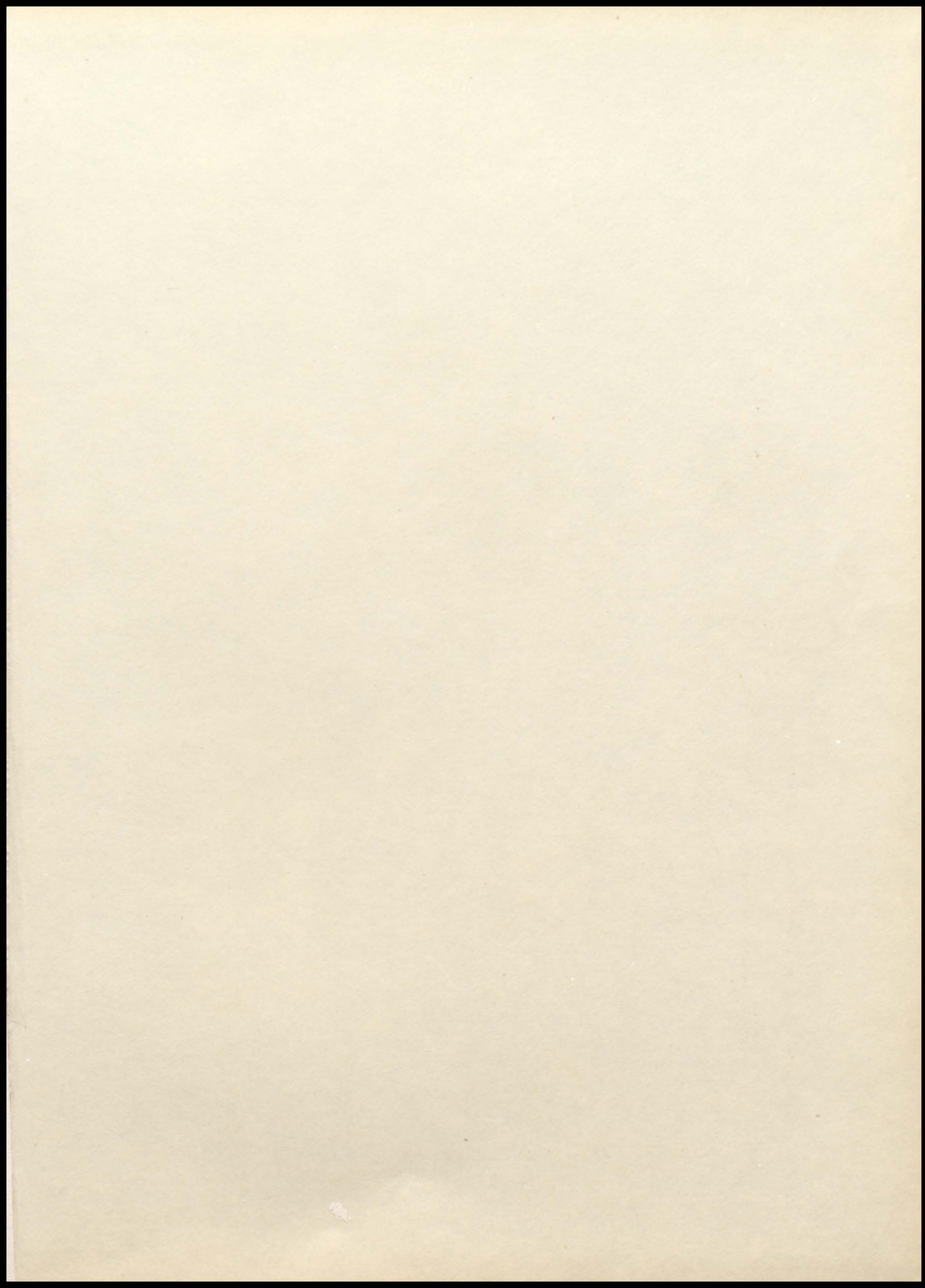




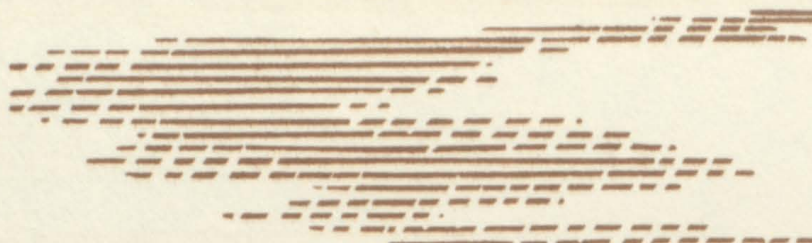




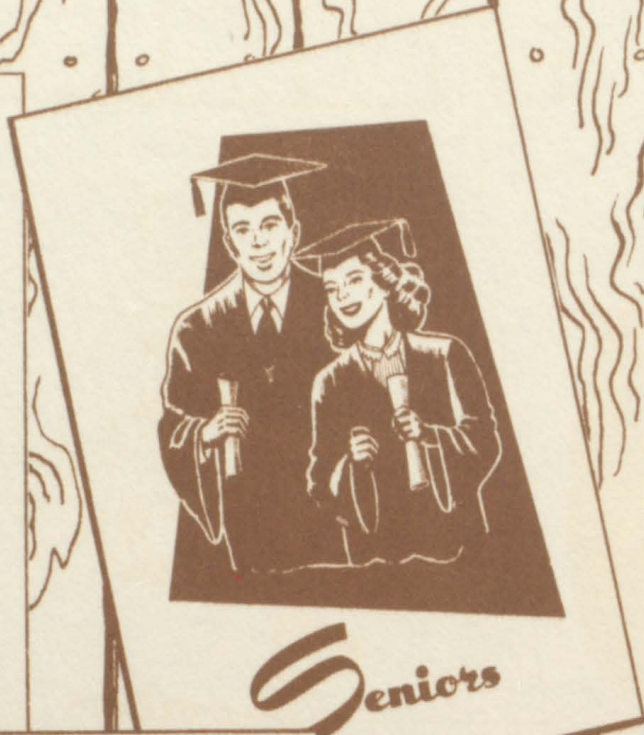








Faculty



Seniors



Junior High



Juniors

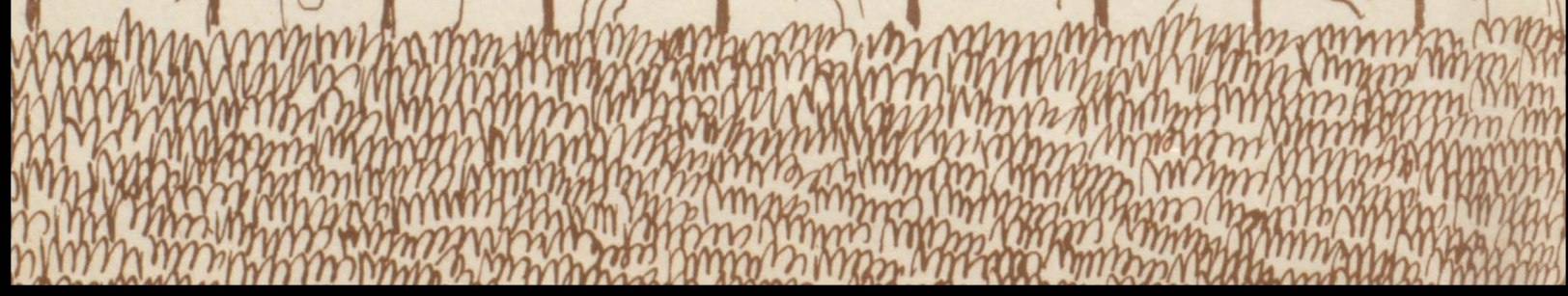


Freshmen



sers

a







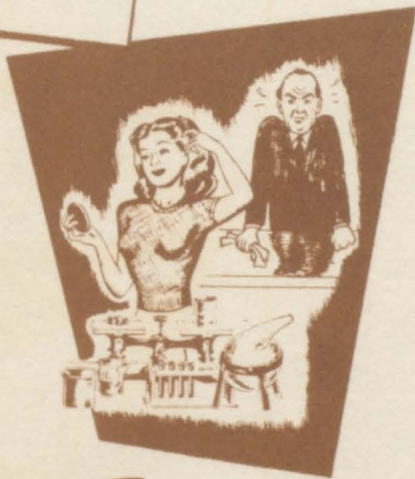
Activities



Favorites



Elementary



Sophomores

Property of

P A

ADV

a



hletics



