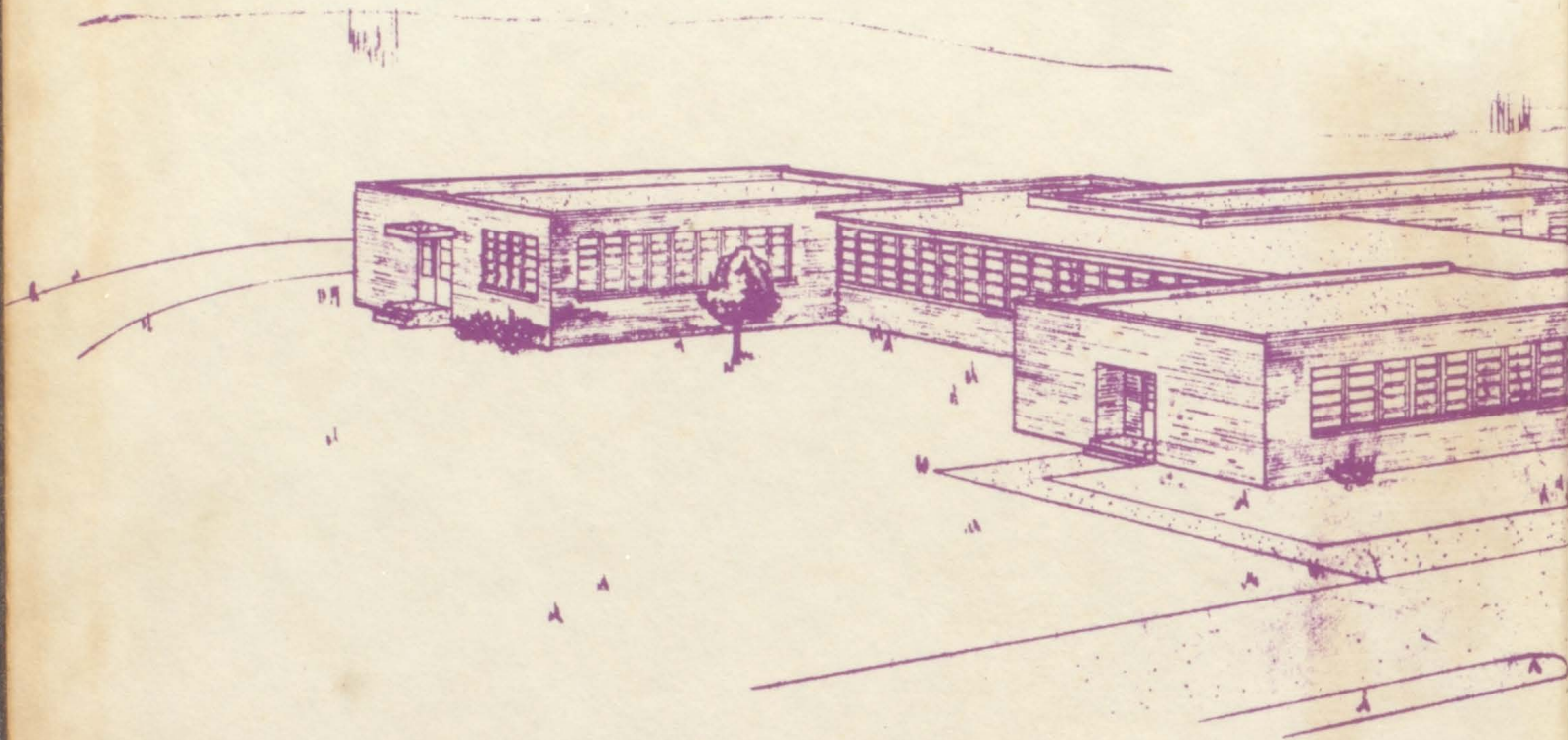


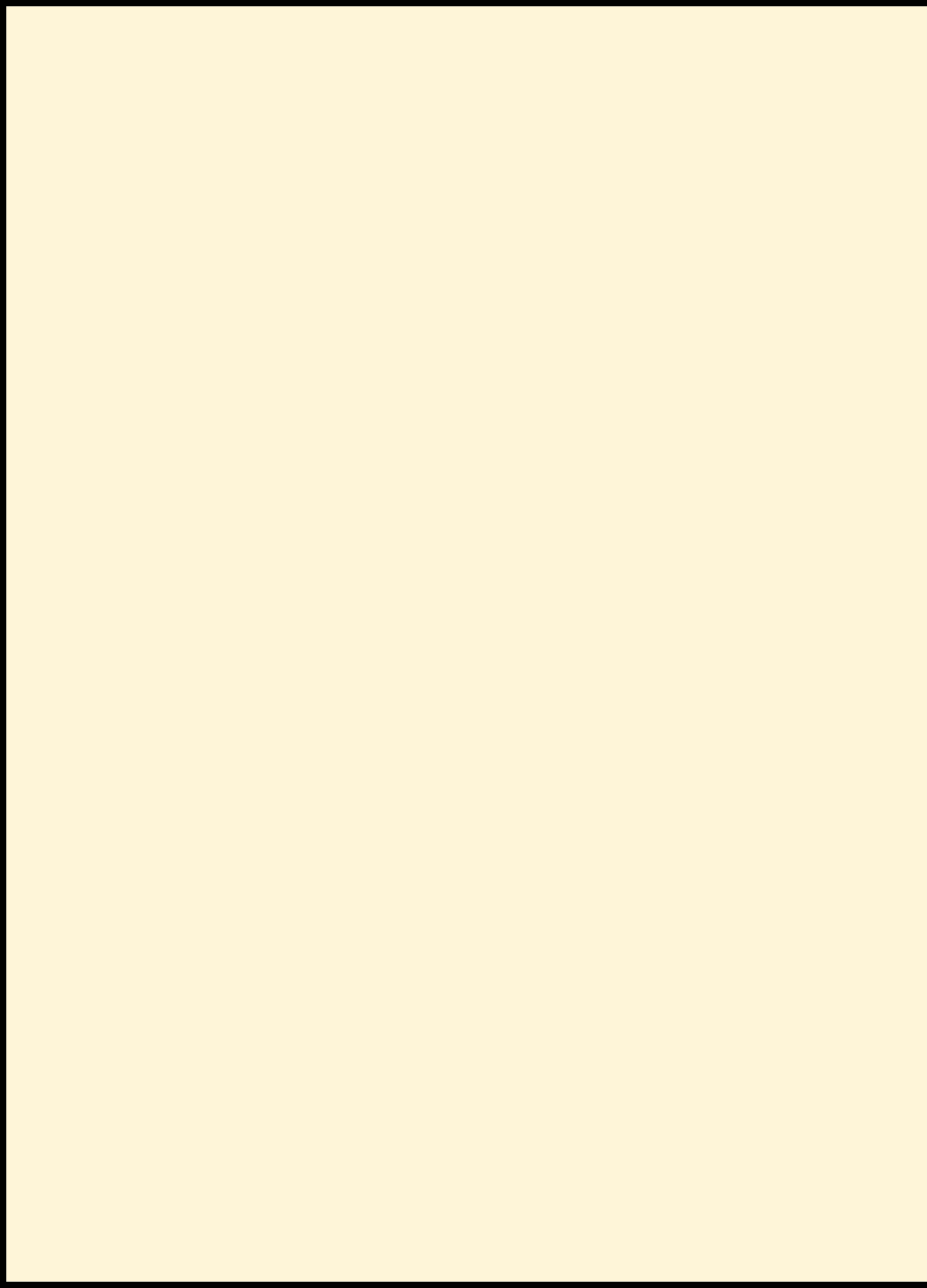


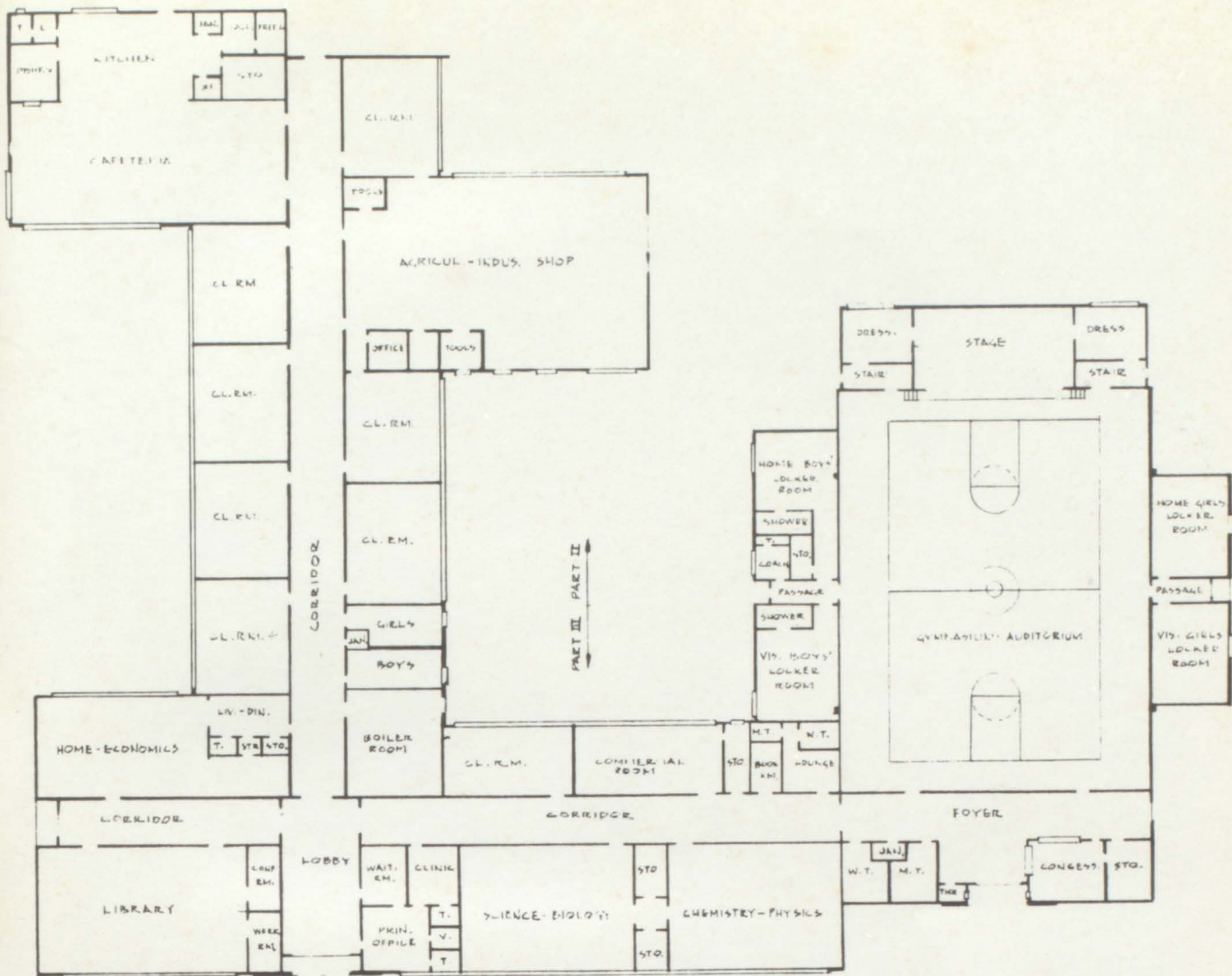
THE PANANTHER

1962









the Year...

1962

of New Things...

PORTLAND HIGH SCHOOL



THE

PANTHER STAFF

DELORIS PERDUE, *Business Manager*
 CAROLYN KIRKHAM, *Business Manager*
 NORMA WOODWARD, *Editor*
 MARGARET GROVES, *Assistant Editor*
 BARBARA BROWN, *Art Editor*
 BILLY WOODALL, *Business Manager*



JANET GRAVES, *Junior High*
 BRENDA GEORGE, *Sports*
 BRENDA McDONALD, *Administration*
 ALLAN FREELAND, *Sports*
 ANN MEADORS, *Junior High*
 CLIFFORD ADKINS, *Sports*
 BONNIE ROGERS, *Typist*
 RONNIE LEE, *Art Editor* (not shown)



CAROLYN HODGES, *Class Editor*
 BETTY AUSTIN, *Clubs*
 LANITA BRADLEY, *Clubs*
 PATSY LAMBERTH, *Class Editor*
 DIANA LANE, *Class Editor*
 MARY BOB SHANNON, *Class Editor*
 LINDA LIGON, *Features*
 KAY JERNIGAN, *Features*



PANTHER

Volume I

● PUBLISHED BY
 THE STUDENT BODY
 PORTLAND HIGH SCHOOL
 PORTLAND, TENNESSEE

Superintendent's Message

My Board and Staff join me in congratulating you, the faculty and student body on your new home. This modern and well equipped building should challenge each of us to do a better job in education. However, as important as these modern facilities are, it does not insure success. Without the desire and effort on the part of each of us the desired results will not be attained.

As Alumni, the 1962 graduating class will have much to say with reference to the standards and objectives of your Alma Mater. You will have failed if you do not go from this school believing in the principles learned while here. You are going out into a complex world. You can't build your lives, nor, can we build this country on a crash program. I recommend three great objectives: Honesty, Integrity and Determination.



C. O. RIGGS
*Superintendent of Sumner County
Schools*

Sumner County Board of Education

L. G. POND, Bethpage; C. O. RIGGS, *Superintendent*; BILLY DICK BROWN, *Chairman, Gallatin*; MRS. ALDEN KELLY, *Executive Assistant, Secretary, and Finance Officer*; J. W. WISEMAN, JR., Portland; E. L. FERGUSON, Portland; H. B. GRAVES, Westmoreland; L. H. NEWMAN, Hendersonville.



With all things NEW we face the CHALLENGE

Administrative Staff



C. O. RIGGS, *Superintendent*; PAUL HANEY, *Attendance Teacher*; MRS. VIRGINIA WEMYSS, *Materials Clerk*; MRS. EVELYN HALL, *Jeanes Teacher*; MRS. R. L. ENGLAND, *Supervisor*; MRS. ALDEN KELLY, *Executive Assistant, Secretary, and Finance Officer*; MISS NANCY DANIEL, *Stenographic Clerk*.

Executive Assistant's Message

As you take your place in life, may you always stand for the right, and strive for those goals so important—faith in our fellowmen, love for all humanity, achievement of our ideals and a brotherhood of peace.



MRS. ALDEN KELLY, *Ex. Asst., Sec., and Finance Officer*

to create a NEW SPIRIT to surpass the old . . .

ADMINISTRATION
AND FACULTY

PAGE 8

CLASSES

PAGE 12

FEATURES

PAGE 42

ORGANIZATIONS

PAGE 62

ATHLETICS

PAGE 74

JUNIOR
HIGH

PAGE 84

FACULTY

CLASSES

ACTIVITIES



CONTENTS



MISS KATHERINE GREEN

DEDICATION

This is a tribute to a lady who believes in helping everyone achieve his goals, who believes in working hard to make life worthwhile and who believes in spreading happiness to everyone. To the students of Portland High, she is a tower of strength that stands tall, thinks tall, smiles tall and lives tall. Because we recognize her as a person who never bends under the burdens of class work, Senior sponsorship and numerous other activities, we sincerely dedicate the 1962 PANTHER to Miss Katherine Green. What greater compliment can one be paid than to say she is a friend of young people.





MR. WILLIAM F. COKER
B.S.-M.A.
Principal



MRS. CHARLIE GREEN
Secretary

ADMINISTRATION •

A Message from Our Principal

This year, for all associated with Portland High School, has been a momentous one. We have acquired a new name, and witnessed man conquer orbital flight about the earth; we have experienced the thrill and delight of occupying a modern, superbly equipped building and seen the world divide itself into two divergent ideological camps.

While the change in name and new building may be of greater concern to us at the present, we each realize that they are but a means to the end that we might be prepared to face the new frontiers thrust upon us, and resolution of the ideological difference that divides the world.

To this task, Portland High School is dedicated, and faces the future convinced that the ultimate goal will be achieved through the preparation for, and acceptance of, responsibility by the young people of the world, for only in them can progress be made.

OFFICE STAFF

Seated: MRS. GREEN; SHIRLEY SCOTT, JUDY LINK, LINDA WOODS, PATRICIA KIRKMAN, JANE BURYSEK, CHARLOTTE WEBBER.





MISS EVELYN ALEXANDER
B.A.
English
Co-Sponsor of Freshman Class
Sponsor of F.T.A.

MISS ELISABETH BURNETT
B.S., M.A.
Librarian
Co-Sponsor of Junior Class
Sponsor of Library Club



MR. SIDNEY BURTON
B.S.
Band—Chorus—Social Studies
Co-Sponsor of Freshman Class
Sponsor of Band Club

MR. GEORGE CAUDILL
B.S.
Basketball Coach—Science
Co-Sponsor of Senior Class
Co-Sponsor of Letter Club

SENIOR HIGH FACULTY



MR. BILLY K. DYE
B.S., M.S.
Mathematics
Co-Sponsor of Senior Class
Sponsor of Math Club

MRS. LLOYD FREELAND
B.S.
Home Economics
Co-Sponsor of Junior Class
Sponsor of F.H.A.



MR. ROBERT GRANTHAM
B.S., M.S.
Industrial Arts
Co-Sponsor of Junior Class
Co-Sponsor of Student Council

MISS KATHERINE GREEN
B.S.
Commercial
Co-Sponsor of Senior Class
Sponsor of Cheerleaders

MR. CARA GREGORY
B.S.

Agriculture

Co-Sponsor of Freshman Class
Sponsor of F.F.A.
Sponsor of Annual Staff



MRS. FLORENCE HUNNICUTT
B.S., M.A.

English

Co-Sponsor of Sophomore Class
Sponsor of Beta Club



MRS. EARL JERNIGAN
B.S.

History—Languages—English

Co-Sponsor of Senior Class
Co-Sponsor of Letter Club

MR. EDGAR JOHNSON
B.S., M.A.

Football Coach—Science

Co-Sponsor of Sophomore Class

SENIOR HIGH FACULTY

MRS. JACK PRUETT
B.S.

Commercial—Social Studies

Co-Sponsor of Sophomore Class
Sponsor of *Purple Herald*



MRS. N. B. THOMPSON, JR.
B.S., M.S.

Science

Co-Sponsor of Junior Class
Sponsor of Science Club



MRS. JOE WISEMAN
B.S.

English—Guidance

Co-Sponsor of Freshman Class
Co-Sponsor of Student Council





NEW

Lessons . . .

NEW *Adventures*
in Learning . . .

NEW *words . . .*

NEW *figures . . .*

NEW *truths*
as we studied in our

CLASSES



SPONSORS

BILLY K. DYE
 MRS. EARL JERNIGAN
 MISS KATHERINE GREEN
 GEORGE T. CAUDILL

Senior Class History

"The Good Satelite P.H.S."

The *Good Satelite—P.H.S.* started its last series of flights with 113 inexperienced astronauts. Now, this being our final flight, we have only 75 astronauts who endured the atmospheric pressures. As we are about to orbit into the mystical sphere of life, we can look into the past and see many events which too place.

Mr. Coker, our most distinguished and capable Dr. of Astronomy, has led us through these past two years in an efficient manner. We are indeed grateful to him for his guidance and leadership.

The greatest event of our senior year was the new Portland High School building which we entered in January. The seniors of 1962 are very proud and honored to be the first class to graduate from the new Portland High School. We shall always remember this as one of the greatest highlights in our senior year.

As we venture into the future we now see a more dangerous and difficult mission—the mission of life. Because of the helpfulness of each teacher, we feel sure we will succeed in this mission and face each day with renewed courage.

STUDENT COUNCIL REPRESENTATIVES

KENNETH McDONALD
 JIMMY KNIGHT
 ANN MEADOWS
 JUDY LEGGETT
 NORMA C. WOODWARD





CLIFFORD DUDLEY ADKINS
Mathematics-Social Studies

Math Club 3, 4; Science Club 1, 2; 4-H Club 1, 2, 3; Annual Staff 4; Football 1-4; 3rd Place Tractor Driving in State; Basketball 4.

JOE WAYNE AKIN
Commercial-Social Studies

Science Club 2; Typing Award 3; Basketball Team 1-4; Letter Club 2-4; Class Tournament Coach 1, 2.

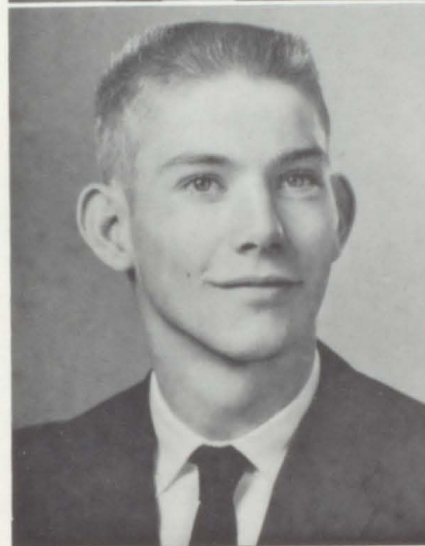
LANITA CARLYNE BRADLEY
Science-Mathematics

Class President 1; Student Council Representative 2; Science Club 1-4, Vice-President 4; Math Club 3, 4, Reporter 3; Future Teachers of America Club 4, Vice-President 4; 4-H Club 1, 2, 3; Beta Club 2, 3, 4, President 4; Merit Scholarship Semi-finalist 4; Language Award 3; Glee Club 1, 2, 3; Volleyball Tournaments 1, 3; Class Tournaments 1, 3; Football Cheerleader 4; Basketball Cheerleader 4, Captain 4; Letter Club 4.



BARBARA ANN BROWN
Commercial-Foreign Language

Science Club 2, 3; F.H.A. 1-4, Junior Degree 1, Chapter Degree 2; Library Club 1; 4-H Club 3; P.T.S.A. Carnival Queen 2; Football Cheerleader 4; Rotary Club Pianist 3, 4; Attendant to Strawberry Queen 3; F.F.A.-F.H.A. Minstrel 2, 3; Class Tournaments 1-4; Music Graduate 4; Paper Staff 4; Annual Staff 4; Speech Club 3; Letter Club 4.



LARRY GENE BROWN
Commercial-Social Studies

Purple Herald Paper Staff 4.

LARRY WAYNE BURTSCHER
Mathematics-Social Studies

MARTHA JANE BURYSEK
Home Economics-Commercial

F.H.A. 1-4, Junior Degree 1, Chapter Degree 2; Class Favorite 3; Paper Staff 4; Class Treasurer 4; Office Assistant 3, 4; Music Graduate (1961); Library Assistant 3; Glee Club 1.

LARRY CALLIS
Mathematics-Science

President of Math Club 4.



'61 • SENIORS • '62



L. WAYNE CARDWELL
Science-Social Studies

Science Club 4; F.F.A. 1.

GARVIN WAYNE CLAIBORNE
Mathematics-Science

Class Tournaments 2, 3, 4.



FRANCES BOWERS COLLINS
Commercial-Social Studies

Science Club 2; Glee Club 1, 2; Beta Club 2, 3, 4;
F.H.A. 1; Class Reporter 4.

JERRY WAYNE CRAFTON
Mathematics-Social Studies

Football 4; Science Club 2; Math Club 3.



TOM CRAFTON
Social Studies-Science

JANE ELLEN CRAVENS
Commercial-Science

Science Fair 2; F.H.A. 2, Junior Degree 2; Dance
Club 1; Paper Staff 4; Business Manager 4.

'61 • SENIORS • '62

PEGGY CRON
Commercial-Home Economics

F.H.A. 1-4, Junior Degree 1, Chapter Degree 2; Li-
brary Club 4; Class Tournaments 1, 2, 3, 4.

VERA SUE CRON
Commercial

F.H.A. 1, Junior Degree 1; Class Tournament 1;
Science Club 1; Paper Staff 4.



JACKIE MAI DORRIS
Home Economics-Social

F.H.A. 1, 2, 3, Junior Degree 1, Chapter Degree 2;
Library Club 4; Class Tournaments 3, 4.

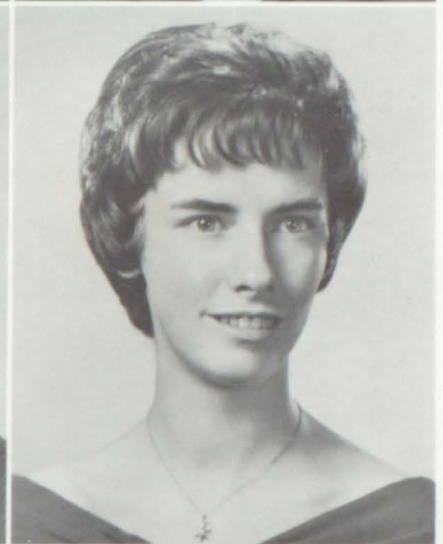


SYVILLA DUNHAM
Home Economics-Commercial

F.H.A. 1, 2, 3, Junior Degree 1, Chapter Degree 2;
Paper Staff 4; Wittiest 4.

RONALD DURRETT
Mathematics-Science

Beta Club 2, 3; Science Club 3.



BARBARA ANN EDMUNDS
Home Economics-Commercial

F.H.A. 1, 2, 3, Junior Degree 1, Chapter Degree 2;
Class Tournaments 1, 2, 3, 4; Science Fair Winner 1;
Runner-up Music Medal 1; Office Worker 3; Typing
Award 3; Homeroom Secretary 3; F.F.A.-F.H.A. Min-
strel 3; Music Graduate 4; Assistant Class Treasurer
4; School Paper Editor 4.

LINDA SUE FLATT
Commercial-Home Economics

F.H.A. 1, 2, 3, Junior Degree 1, Chapter Degree 2;
Science Club 2; Class Tournaments 1-4; Glee Club 1;
Paper Staff 4.



NANCY CHERYL FORD
Commercial-Home Economics

F.H.A. 1, 2, 3, Junior Degree 1, Chapter Degree 2;
4-H Club 1, 2; Class Tournaments 1, 2, 4; Rainbow
Girls 3, 4; Library Club 4; Paper Staff 4.

'61 • SENIORS • '62



LARRY MINOR GARRETT
Mathematics-Science

F.F.A. 1, 2, 4; Science Club 1-3; Leadership Club 1;
Escort in Homecoming Football Game 4; Class Tourn-
aments 1, 4; Paper Staff 3.

BRENDA GAIL GEORGE
Home Economics-Commercial

F.H.A. 1, 2, 3, Junior Degree 1, Chapter Degree 2;
Class Tournaments 1, 2; Basketball 3, 4; Class Tourn-
aments Coach 3, 4; Paper Staff 4; Annual Staff 4, Sports
Editor 4.



PATRICIA ELAINE GIVENS
Mathematics-Commercial

F.H.A. 3; Library Club 3; Class Tournaments 2.

JANET GRAVES
Home Economics-Commercial

Class Officer 1; F.H.A. 1-4, Song Leader 2, 4, Junior Degree 1, Chapter Degree 2; Science Club 3, 4; Annual Staff 4; Class Tournaments 1-4; Calico Queen 3; F.F.A.-F.H.A. Minstrel 2, 3, 4; Football Cheerleader 3; Football Queen Attendant 4; Paper Staff 4, Business Manager 4; Best School Spirit 4.

'61 • SENIORS • '62

AMELIA ANNE GRAY
Commercial-Home Economics

F.H.A. 1-4; Junior Degree 1, Chapter Degree 2; F.F.A.-F.H.A. Minstrel 3, 4; P.T.S.A. Carnival Queen Candidate 3; F.H.A. Cake Winner 4; Paper Staff 4.

JAMES M. HESTER
Commercial-Social Studies

Science Club 2; Basketball 2; Class Tournaments 1, 4; Paper Staff 4.



ROY HIGH
Mathematics-Social Studies

Science Club 2; Student Council Representative 1.

BETTY CAROL HOBDY
Commercial-Home Economics

F.H.A. 1, 2, 3; F.F.A.-F.H.A. Minstrel 2; Junior Degree 1; Chapter Degree 2; Science Club 2; Class Tournament Manager 3; Glee Club 1; Paper Staff 4.



MACK JENKINS
Agriculture

F.F.A. 1-4; F.F.A. Vice-President 3; F.F.A. Treasurer 4; District F.F.A. Vice-President 4; State F.F.A. Convention 3; State Degree 3; F.F.A. Public Speaking Award 3; Judging Team 3, 4; Livestock Award 3; Class Tournaments 1-3; F.F.A. Basketball 1-4; F.F.A.-F.H.A. Minstrel 2, 3, 4; F.F.A. Public Speaking Contest 2, 3.

JAMES MICHAEL JOHNSON
Mathematics-Social Studies

Science Club 1; Class Tournaments 1-4; 4-H Club 1, 2; Football 2, 3; P.T.S.A. Carnival King Candidate 4; Escort in Football Homecoming 4.



WILLIAM J. JOHNSON
Science

Basketball Varsity 3, 4; Co-Captain Basketball 4; Student Trainer 1-4; Student Trainer Award 3; Letter Club 2, 3, 4; Class Tournaments 1, 2; Captain Volleyball Team 3; Science Club 1; Class Tournament Captain 2; Homeroom President 1; Class Tournament Coach 3, 4; \$100 Magazine Salesman 4.

DONALD N. JONES
Agriculture-Social Studies

F.F.A. 1-4; F.F.A. Secretary 3, 4; Parliamentary Procedure Contest 3, 4; F.F.A. Judging Team 3, 4; State F.F.A. Convention 3, 4; National F.F.A. Convention 4.



'61 • SENIORS • '62



RAY ARLEN JONES
Agriculture

F.F.A. 1-4; F.F.A. Reporter 4; F.F.A.-F.H.A. Minstrel 2, 3, 4; Parliamentary Procedure 4; Skills Contest 3, 4; F.F.A. Basketball Team 4; F.F.A. State Convention 3, 4; National Convention 4; F.F.A. Camp 4; School Reporter 4.

BILLY WAYNE KEY
Mathematics-Agriculture

F.F.A. 1-4; F.F.A. President 3, 4; State Vice-President 4; Star Farmer 3; Dairy Farming Award 3; Livestock Judging 2, 3, 4; F.F.A.-F.H.A. Minstrel 2, 3, 4; F.F.A. State Convention 2, 3, 4; National Convention 4; State Farmer Degree 3; Parliamentary Procedure Team 3, 4; Skills Contest 3, 4; F.F.A. Carnival King 3; F.F.A. Basketball 2, 3; Class Tournaments 1.



PATRICIA ANN KIRKMAN
Mathematics-Commercial

Glee Club 1; Class Superlative 1; Office Worker 2, 4; Homeroom President 1; Paper Staff 4.

JAMES D. KNIGHT
Mathematics-Science

Basketball Varsity 4; Football 1-4; Co-Captain Football 4; Science Club 1-4; Science Club President 4; Beta Club 2, 3; Letter Club 3, 4; Student Council 2-4; Boys' Vice-President 4; Class Tournaments 1, 2, 3; Co-Captain Class Tournament 3; Track Team 3, 4; Volleyball Team 3; Sgt.-at-Arms, Letter Club 4; Homeroom President 1-3; \$100 Magazine Salesman 4; Class Favorite 4; Math Contest 1-3; 4-H Club 2, 3, 4.



JOSEPHINE LATIMER
Commercial-Social Studies

F.H.A. 3, 4; F.F.A.-F.H.A. Minstrel 3, 4; F.H.A. Cake Winner 3; Paper Staff 4.

BOBBY JOE LEGGE
Agriculture

F.F.A. 1-4; Class Tournaments 2, 4; F.F.A. Assistant Vice-President 4; F.F.A. Judging Team 4; Parliamentary Procedure 4; Paper Staff 4; Minstrel 3, 4.



PATSY RUTH LEGGE
Home Economics-Science

Science Club 2, 4; Library Club 3, 4; Glee Club 3; Office Worker 3, 4; Class Tournaments 1; F.H.A. 1, 2, 3, Junior Degree 1, Chapter Degree 2; F.F.A.-F.H.A. Minstrel 3; 4-H Club 1; F.H.A. Convention 1, 2; Typing Contest 3.

JUDITH NORENE LEGGETT
Commercial-Home Economics

F.H.A. 1, 2, 3; F.F.A.-F.H.A. Minstrel 1, 2; Science Club 2; Junior Degree 1; Chapter Degree 2; Class Tournaments 1-4; Typing Award 3; Carnival Queen Candidate 4; Paper Staff 4; Student Council Representative 4.

LINDA LIGON
Science

F.H.A. 1-4, Junior Degree 1, Chapter Degree 2, Recreation Leader 2; Recreation Committee 4; F.H.A. State Convention 2; Varsity Visit 4; F.F.A.-F.H.A. Minstrel 2, 3, 4; Library Club 3; Program Committee 3; Glee Club 1, 2, 3; Science Club 2; Student Council Representative 3; Homeroom President 3; Annual Staff 3, 4, Class Editor 3, Features Editor 4; 4-H Club 1-4, Treasurer 4; Honor Club 3, 4; 4-H Round-up 1, 2; Class Tournaments 1, 2; Football Cheerleader 2; Football Queen Attendant 3; Basketball Cheerleader 2, 3; Rainbow Girls 4; Letter Club 2, 4; 4-H Queen Attendant 1; 4-H Queen 2; Volleyball Team 3; Guidance Assistant 4; Most Attractive 4; Co-Chairman Teen-agers March of Dimes 4; Class Night Committee 4.



JUDY KATHLEEN LINK
Home Economics-Commercial

F.H.A. 1, 2, 3, Junior Degree 1, Chapter Degree 2, Office Worker 4; Paper Staff 4.



WILLIAM DAVID LINK
Science-Social Studies

Letter Club 2-4, Vice-President 4; Football 2, 3, 4, Co-Captain 4; Class Favorite 1; Student Council Representative 3; Captain Magazine Sale 4.

STEVE MARKHAM
Mathematics-Social Studies

Achieved at Joelton-Ping Pong Club 1; Science Club 1; Student Council Representative 2; First Aid Club 2; Junior Achievement 4; Sergeant-at-Arms 4.

MEREDITH MARLIN
Language-Commercial

Library Club 3; Strawberry Queen Attendant 2; 4th Magazine Salesman 4.

KENNETH MILES McDONALD
Mathematics-Science

4-H Club 1-4, Vice-President 2, 3, Recreation Leader 4; Class President 3; Class Favorite 2; Student Council Representative 2; Student Council President 4; Beta Club 2, 3; Boys' State Representative 3; Class Tournaments 1-4; Co-Captain 3; Volleyball Team 3; Teen of Month 3; Letter Club 2, 4; Science Club 2; Football 1-4; Football Captain 4; Most Valuable Player 3; Most Outstanding Back 4.



'61 • SENIORS • '62

WILLIAM FERRELL McDONALD
Science-Mathematics

Football 1-4; Letter Club 4; Science Club 1, 2; B-Team Football Captain 3; Basketball 3, 4; Class Vice-President 3, 4; 4-H Club 1-4; President 3, 4; Class Tournaments 1-2.



MILDRED ANNETTE MEADOR
Home Economics-Science

F.H.A. 1-4, Junior Degree 1, Chapter Degree 2; F.F.A.-F.H.A. Minstrel 2, 3, 4; Basketball Varsity 2, 3, 4; Letter Club 4; Basketball Co-Captain 4; F.H.A. Convention 3.

ELIZABETH ANN MEADORS
Home Economics-Mathematics

Student Council 4, Secretary-Treasurer 4; Beta Club 2-4; Science Club 1-3; F.H.A. 1-4, Parliamentarian 2, President 4; Parks Sub-District Vice-President 4; State Convention 2-4; National Convention 3; Varsity Visit 3, 4; Home Economics Medalist 3; Junior Degree 1; Chapter Degree 2; State Degree 3; F.F.A. Queen 2; Delta Epsilon 3; Annual Staff 2, 4; Department Editor 2; Junior High Editor Editor 4; Homeroom President 1, 2, Secretary 3; F.F.A.-F.H.A. Minstrel 2-4; Class Tournaments 1, 4; Class Tournament Coach 2; Basketball 2; 4-H Club 1; Co-Captain Magazine Sale 4; P.T.S.A. Program Committee 4; Sports Reporter 3, 4; F.H.A. Workshop 3; McCall's Teen Fashion Board 4.



JOE WILLIAM O'NEAL
Mathematics-Science

Science Club 2; Second Place Winner Science Fair 2; Math Club 3; Football 2, 3; Class Reporter 3; Class Favorite 3; Student Council Representative 3; Class Tournament 3; Class President 4; Basketball Varsity 4; Annual Staff 3; Band 4.

WESLEY LEE PARKS
Mathematics-Social Studies

Science Club 2; Beta Club 2, 3; Student Council Representative 2; Math Club 3.



DELORIS PERDUE
Commercial

Science Club 2, 3; F.H.A. 2-4; Glee Club 1-3; 4-H Club 1, 2, 3; 4-H Club Queen 3; Annual Staff 4; Business Manager 4; Paper Staff 4; Student Council Representative 3; Class Tournaments 1-4; 4-H Honor Club 2-4; 4-H Round-up 2; F.F.A.-F.H.A. Minstrel 2, 3; Junior Degree 1; Chapter Degree 2; Class Treasurer 4; Speech Club 3.

'61 • SENIORS • '62

BONNIE FAY ROGERS
Commercial

F.H.A. 1, 2, Junior Degree 1, Chapter Degree 2; Library Club 1; Library Convention 1; Teen of Month 3; Paper Staff 4, Business Manager 4; Annual Staff 4; Typing Award 3; Annual Staff Typist 4.



LINDA KAY RONEY
Home Economics-Commercial

4-H Club 1-4; 4-H Club Reporter 2, 3; Award 4-H Camp 1, 3; 4-H Honor Club 3, 4; 4-H Congress 3; Class Favorite 1; Letter Club 2, 4; Science Club 2, 3; F.H.A. 1-4, Junior Degree 1, Chapter Degree 2; Speech Club 3; F.F.A.-F.H.A. Minstrel 2, 3; Paper Staff 4; Rainbow Girls 3, 4; Worthy Associate Advisor 3; Worthy Advisor 4; Glee Club 1-3; Class Tournaments 1-4; Volleyball Team 3, 4; Football Cheerleader 1, 4; Co-Captain 4; Football Queen 4; Strawberry Hostess Queen 4; First Runner-up CEMC Contest 4.



SHIRLEY JO SCOTT
Commercial

F.H.A. 1, Junior Degree 1; Paper Staff 4, Business Manager 4; Office Worker 4.

JERRY DOUGLAS SEARCY
Mathematics-Social Studies

Science Club 2; Football 4; Class Tournaments 1; Math Club 3.

'61 • SENIORS • '62

MARY BOB SHANNON
Commercial-Social Studies

Homeroom Secretary 1; F.H.A. 2, Junior Degree 2; F.F.A.-F.H.A. Minstrel 2; Science Club 2; Glee Club 2, 3; Class Tournaments 2, 3; Library Club 3; Volleyball Team 3; Class Secretary 3, 4; Annual Staff 4, Class Editor 4; Future Teachers of America Club 4, Secretary 4; Most Courteous 4.

LUCILLE DOBBS SHAUB
Home Economics

Science Club 1, 2; F.H.A. 1, 2, 3; Letter Club 2, 3; Basketball 1, 2, 3.



RAYMOND SHORT
Agriculture

F.F.A. 1-4; Class Tournaments 1, 2, 4; Most Witty 4.

BOBBY JOE STAGGS
Mathematics-Science

Science Club 4; F.F.A. 1.



MARTHA LEE STAGNER
Commercial

F.H.A. 1, 2, Junior Degree 1, Chapter Degree 2; Beta Club 2, 3, 4; Annual Staff 2; Library Club 4; Paper Staff 4.

HARRY DEAN SUMMERS
Social Studies

Science Club 1; Letter Club 1; Class Tournaments 1-4; Football 1-4.



IVE JEANETTE TAYLOR
Home Economics-Social Studies

F.H.A. 1-4, Junior Degree 1, Chapter Degree 2; Library Club 4.

MARY ALINE VAUGHN
Commercial-Home Economics

F.H.A. 1, 2, 3; Junior Degree 1; Chapter Degree 2; Science Fair Winner 1; Class Tournaments 1-4; Paper Staff 4.



'61 • SENIORS • '62



SHIRLEY MARIE WATSON
Home Economics-Commercial

Achieved at Maplewood—F.H.A. 1, 2; Basketball Varsity 1, 2; Letter Club 2; Class Tournaments 1; Class Tournament Coach 2; 4-H Club 1.
Achieved at Portland—F.H.A. 3, 4, Recreation Leader 4; Basketball Varsity 3, 4; Captain Basketball 4; Letter Club 3, 4; Class Tournament Coach 3; Class Favorite 4; Most Athletic 4.

BETTY WEBB
Home Economics

F.H.A. 2, 3; Library Club 3.



WILLIAM WISEMAN
Agriculture

F.F.A. 1, 2, 3; Football 4; Class Tournaments 1, 2, 3, 4.

BILLY WAYNE WOODALL
Agriculture-Commercial

F.F.A. 1-4; Parliamentary Procedure 3, 4; Paper Staff 4; F.F.A. Basketball 2; Dairy Judging Team 3, 4; Skills Contest 3, 4; Creed Contest 1; Public Speaking 2; State Farmer Degree 3; Soil and Water Management 3; Class Tournaments 3, 4; F.F.A. Treasurer 3; F.F.A. Sentinel 4; Science Club 2; Fire Chief 4; Annual Staff 4.

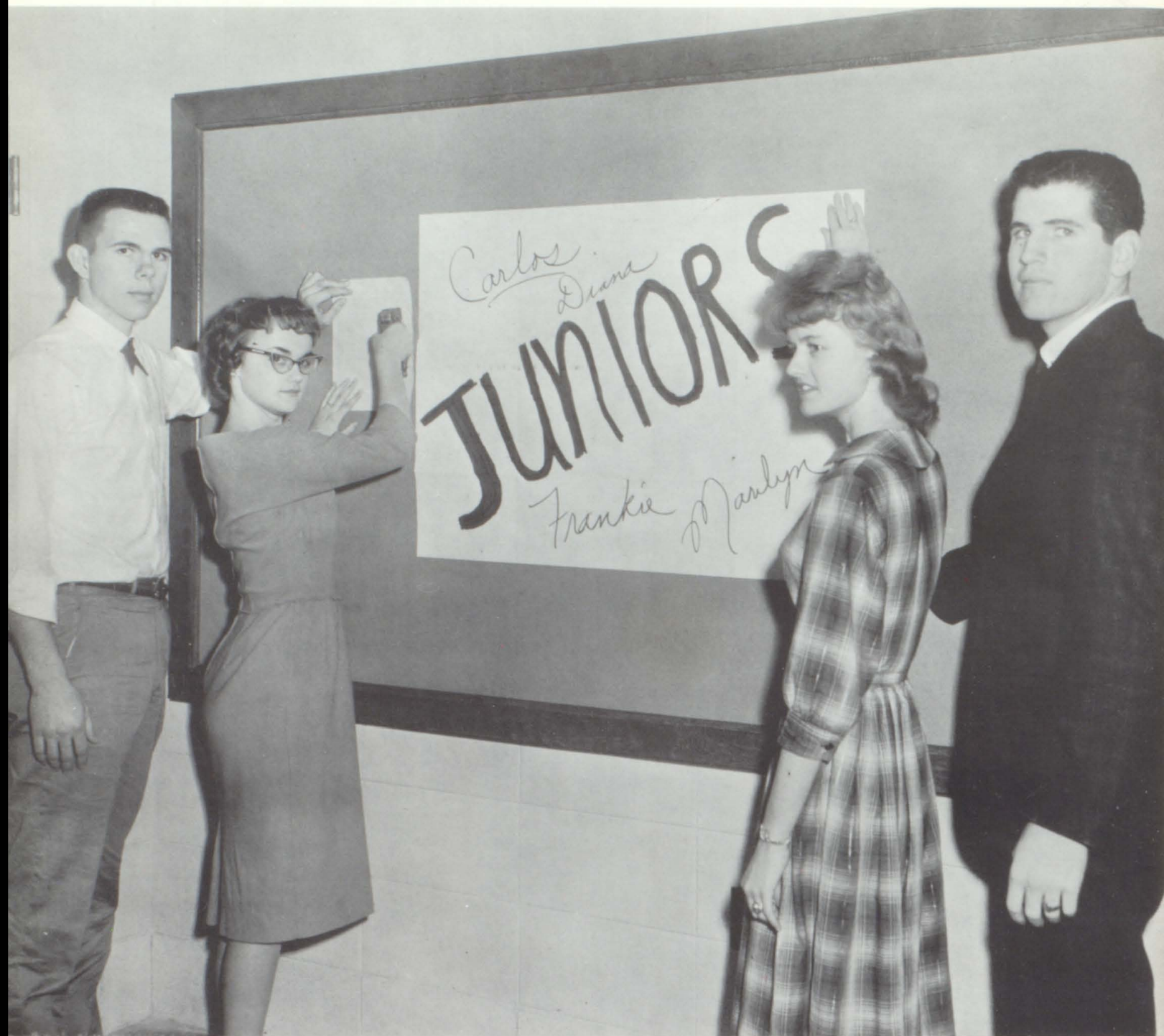
LINDA CAROL WOODS
Commercial

F.H.A. 1, 2, Junior Degree 1; Paper Staff 4.

NORMA CAROL WOODWARD
Mathematics-Home Economics

F.H.A. 1-4, Junior Degree 2, Chapter Degree 3, State Degree 4; Varsity Visit 4; F.F.A.-F.H.A. Minstrel 2, 3; F.H.A. Reporter 3, Vice-President 4; Science Club 1, 2; Science Fair Winner 2; Glee Club 1-3; Class Vice-President 1; Class Secretary 2; Student Council 4; Girls' Vice-President 4; 4-H Club 1-4; 4-H Honor Club 2, 3, 4; All Stars 4; President 4-H Club 4; Reporter 2, Treasurer 3; Honor Club President 4; Song Leader 3; Sectional 4-H Winner 4; National 4-H Congress 4; State Congress 3, 4; 4-H Round-up 1-4; State Winner 4; Class Tournaments 1, 2; Beta Club 3, 4; Beta Club Convention; Annual Staff 4, Editor 4; Best All-Round 4; Betty Crocker Homemaker of the Year 4; Class Night Committee; Chairman of March of Dimes; Co-Captain Magazine Sale 4; Girl's State 3.





JUNIOR CLASS OFFICERS

FRANKIE HARPER..... *Vice President*
 DIANA LANE..... *Secretary-Treasurer*
 MARILYN BROWN..... *Reporter*
 CARLOS HARRIS..... *President*

JUNIOR CLASS
SPONSORS

MISS ELISABETH BURNETT
ROBERT GRANTHAM
MRS. LLOYD FREELAND
MRS. N. B. THOMPSON, JR.



JUNIORS PREPARE FOR ROLES
AS SENIORS

JUNIOR
STUDENT COUNCIL
REPRESENTATIVES

DAVID PERDUE
MARGARET SUE GROVES





DOLLY ARMSTRONG
 BETTY AUSTIN
 JEANETTE BRILEY
 MARILYN BROWN



DWIGHT BUNTIN
 ROBERT BUNTIN
 MABEL BUTLER
 KENNETH CLARK



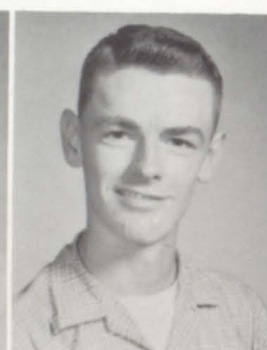
LYNDA CRAIGGE
 LAVOYCE CRON
 BONNIE DAUGHERTY
 LINDA DAVIS



MIKE DEASY
 JUDY DOBBS
 PAUL A. DORRIS

THE JUNIOR CLASS

JOAN DOWELL
 MILTON DURRETT
 DAVID EDMUNDS
 LESLIE FAROUGH



SANDRA GARRETT
 RICKY GARRISON
 BONNIE GEMINDEN
 GLENDA GEORGE



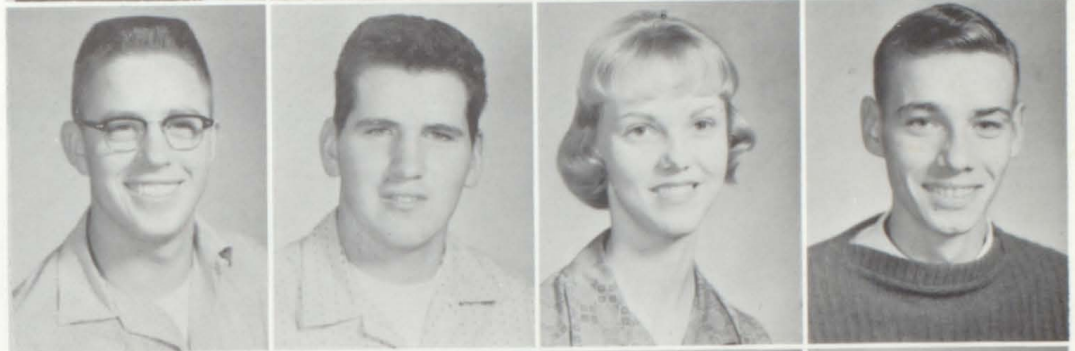
JIMMY GOAD
 MARY GOODWIN
 MARY LYNN GRAVES
 RENE GRAVES



BARBARA GREGORY
 LARRY GROVES
 MARGARET GROVES
 FRANKIE HARPER



POWELL HARRELL
 CARLOS HARRIS
 BETTY HART
 LESLIE HINTON



SUE HINTON
 HAROLD HOBDY
 CAROLYN HODGES



THE JUNIOR CLASS



JUDY HUNTER
 GLENN JENKINS
 JOE JERNIGAN
 KAY JERNIGAN



CHARLES JONES
 LAVON JONES
 CHARLES KEEN
 PATRICIA KEEN



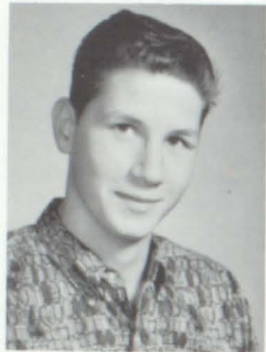
FREIDA KEY
 CAROLYN KIRKHAM
 RONNIE KIRKHAM
 DIANA LANE



RONNIE LEE
 PATRICIA LEGGE
 RANDY MCCLOSKEY

THE JUNIOR CLASS

BOBBY MCCORMACK
 LARRY MCFARLIN
 DWIGHT MARCIN
 LINDA MAREK



BENIDA MAYES
 DARRELL MEADOWS
 SHERRAN MILLER
 BARBARA MINK



THOMAS MINOR
 JUDY O'NEAL
 JOANNE PARKER
 JOHN PATTON



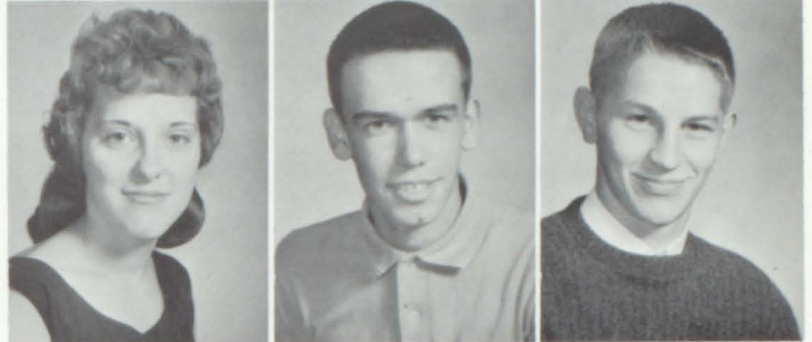
DAVID PERDUE
 EDDIE PERDUE
 GEORGE PERDUE
 HARLAN PERDUE



JUDY PERDUE
 CAROLYN PITCHFORD
 LINDA POOLE
 DAVID RAY



JOANNE RIGGSBEE
 GAIL SEARCY
 BILL SMART



THE JUNIOR CLASS



GLENDAL STEVENS
 FAYE STEWART
 JIMMY STEWART
 RONNIE SUTTLE



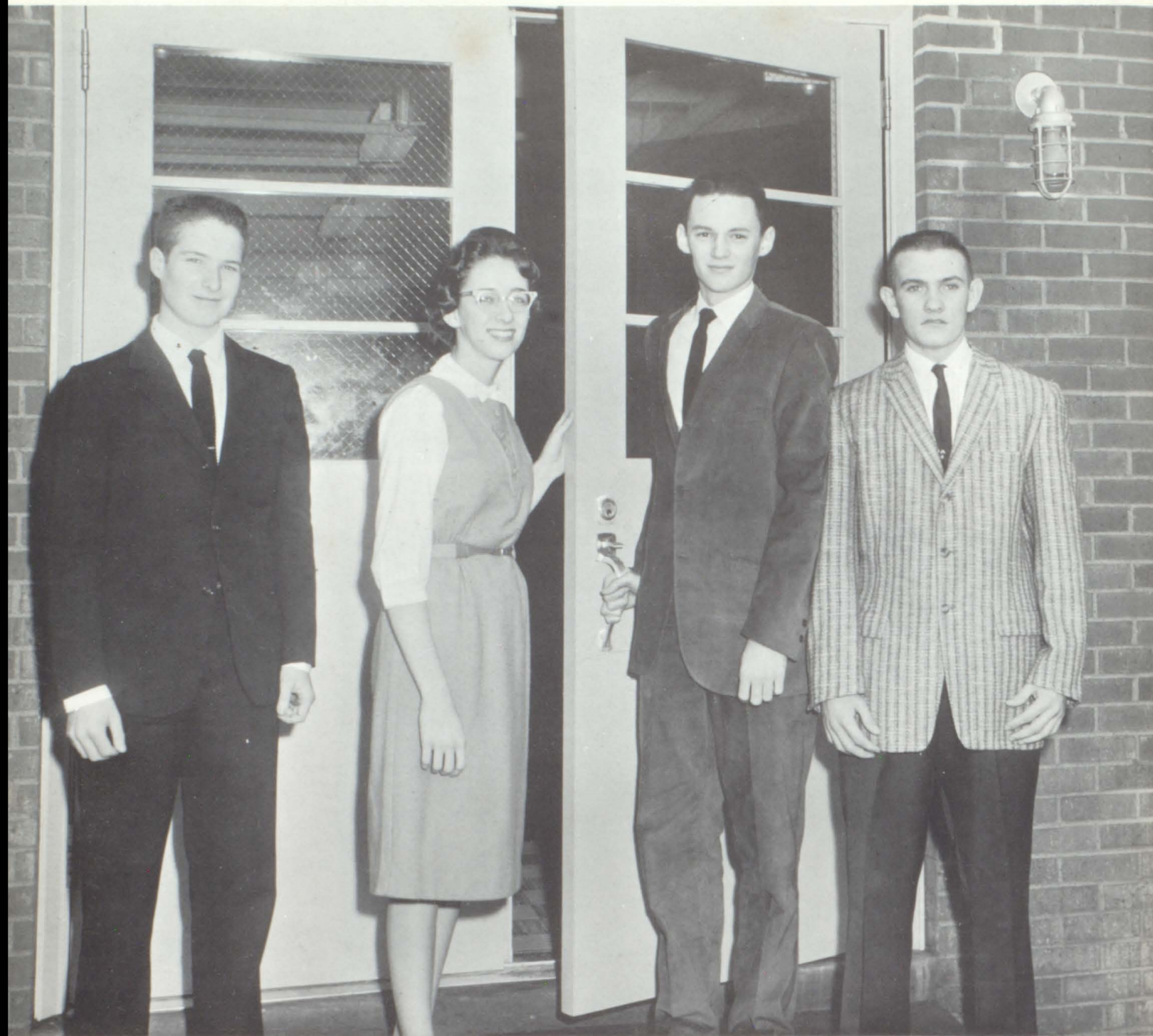
WANDA SUTTLE
 PATRICIA TRAMMELL
 MARJORIE UPCHURCH
 NORMAN WEBB



CHARLOTTE WEBBER
 HAROLD WHEELER
 PATRICIA WHITE
 JUDY WISEMAN



BECKY WOODS
 ROGER WRIGHT
 VELMA WRIGHT



SOPHOMORE CLASS OFFICERS

ALLEN POOLE..... *Boys' Treasurer*
BRENDA McDONALD..... *Girls' Treasurer*
LARRY WILKINSON..... *Vice President*
EDWARD TONEY..... *President*



SOPHOMORE CLASS
SPONSORS

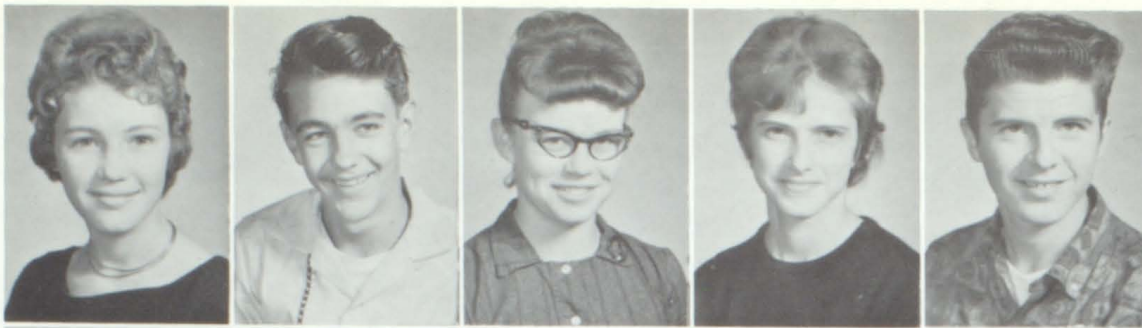
MRS. FLORENCE HUNNICUTT
MR. EDGAR JOHNSON
MRS. JACK PRUETT

SOPHOMORES GAIN RESPECT AND STANDING

SOPHOMORE
STUDENT COUNCIL
REPRESENTATIVES

EDWARD TONEY
SANDRA WATTWOOD





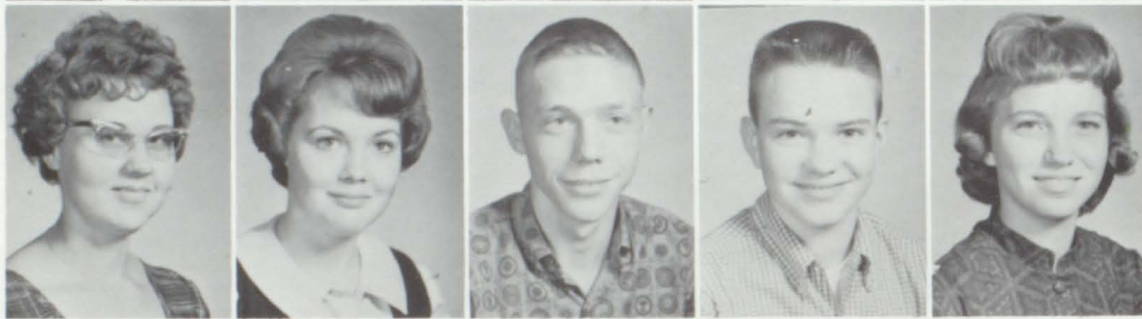
CARLENE ADAMS
 DONNIE ALDRIDGE
 DONNA BARBER
 DIANE BEVER
 BILLY BRADLEY



BOBBY BREWER
 JOHN BRILEY
 LINDA BRILEY
 GERRY BROWN
 LINDA BROWN



JERRY CARTER
 PHYLLIS CLOUSE
 BILLY CRAFTON
 CHARLOTTE CUMMINGS
 BETTY DAVIS



PATRICIA DAVIS
 JANICE DEASY
 MIKE DENNING
 JERRY DICKENS
 LINDA DILLARD

THE SOPHOMORE CLASS

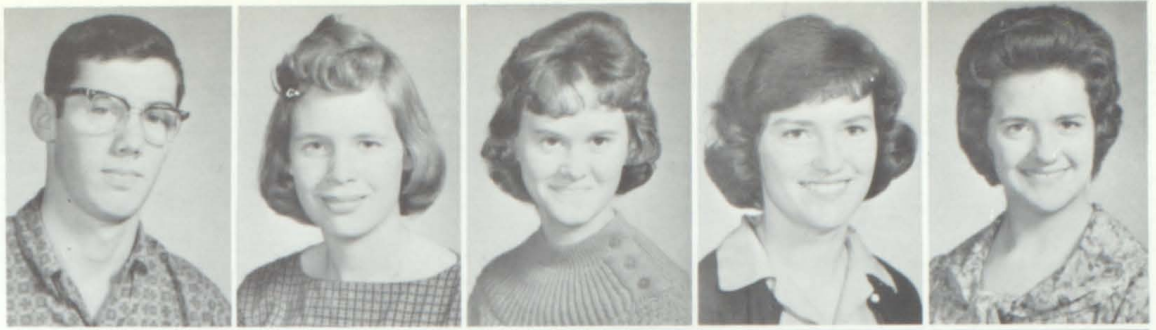
PATRICIA DORRIS
 ROBERT DORRIS
 RONNIE DORRIS
 LOUISE DUNHAM
 PEGGY DUNNING



SHERRILL DURRETT
 BILLY FINN
 GLENDA FLEMING
 CHERYL FORBIS
 RITA FRANKLIN



ALLEN FREELAND
 DORIS FREEMAN
 ERNESTINE FUQUA
 DONNA GARRETT
 SANDRA GLASSEY



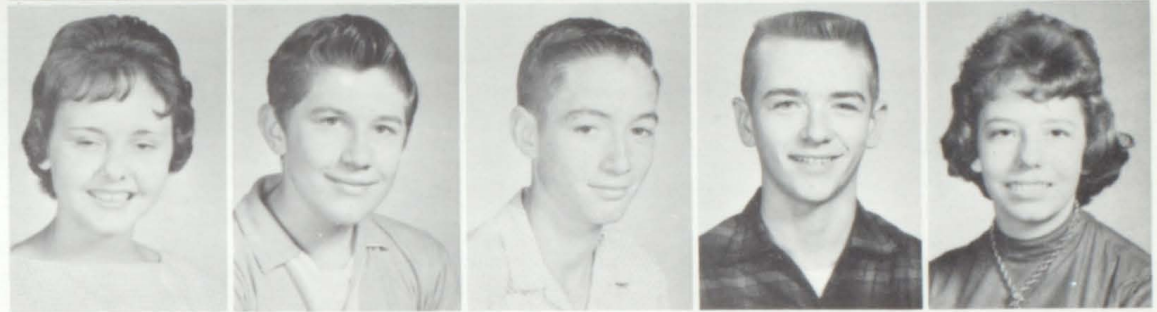
CALVIN GRAVES
 BILLY JOE GREER
 JOYCE GREGORY
 RALPH GREGORY
 ROBIN GREGORY



DONNA HACKETT
 JUNE HALL
 GAYLE HAMMOND
 LARRY HARDIN
 BOBBY HESTER



MARY FRANCES HILL
 RICHARD HILL
 LEONARD HINTON
 RANDALL HINTON
 SHELIA HUNNICUTT



THE SOPHOMORE CLASS





SYLVIA HUNTER
DONALD JENKINS
SHIRLEY JOHNS
RALPH JOHNSON
PATRICIA JONES



JO ANNE JONES
ALLEN JONES
LINDA KEEN
DOUGLAS KIRKHAM
LEROY KIRKHAM



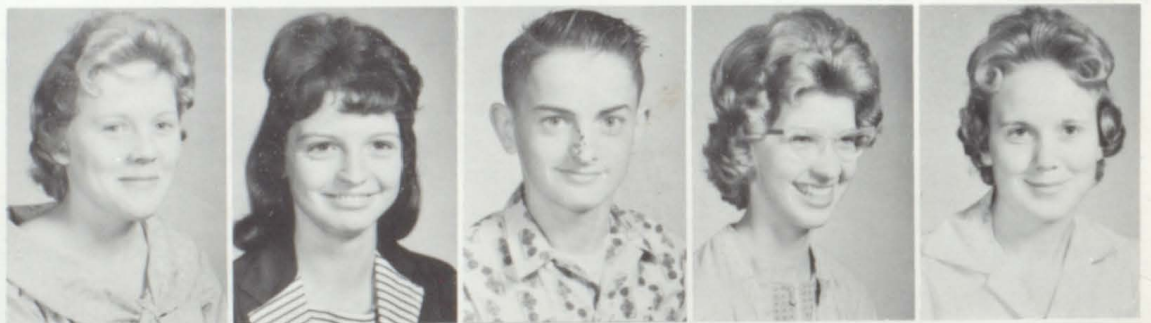
RAYMOND KIMBLER
GOLDIE KNIGHT
PATSY LAMBERTH
RALPH LANE
CAROLYN LASSITER



CAROL LEE
VINCENT LEGIEZA
CAROLYN LINK
BRENDA McDONALD
DENVER McDOWELL

THE SOPHOMORE CLASS

CAROL MCFARLIN
KATHY MCGLOTHLIN
BARRY MILLER
FREIDA MINOR
RUBY PARKS



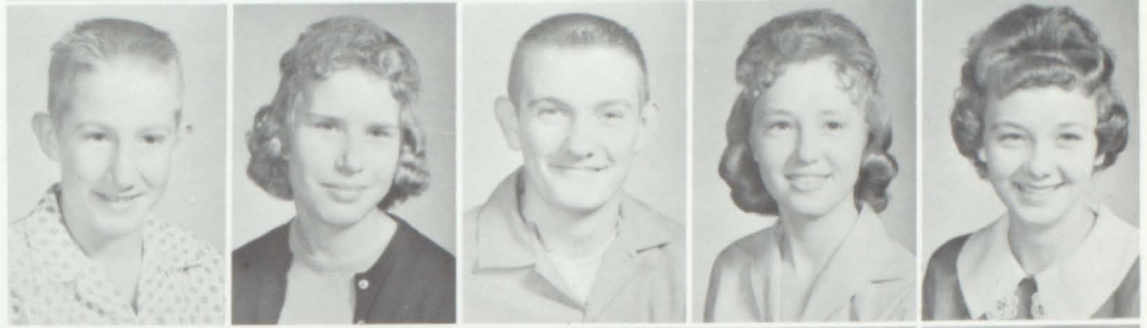
WANDA PEARSON
RONNIE PERRY
CAROLYN PIPPIN
ALLEN POOLE
EMMA JEAN RAY



LINDA ROBERTS
 JANET SEARCY
 PATSY SHADOWENS
 JEAN SISCO
 ELDON STINSON



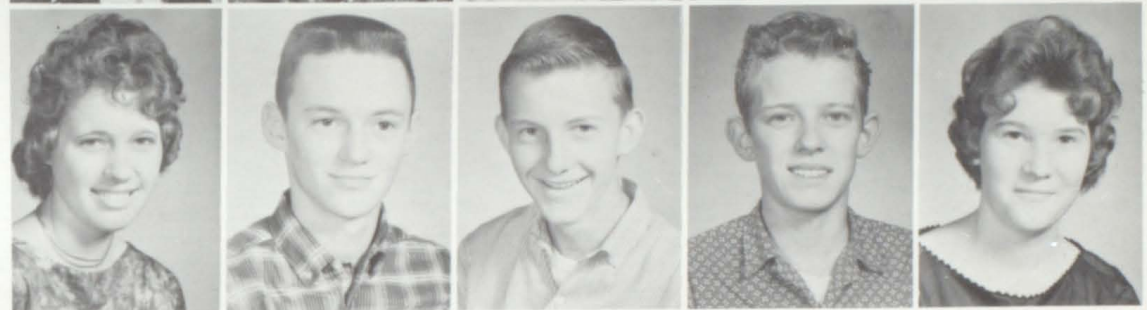
JERRY STROTHER
 WILLIE MAY SUDDARTH
 EDWARD TONEY
 JUDY TROUTT
 SHIRLEY UTLEY



GLENDA WAKEFIELD
 SANDRA WATTWOOD
 RICKY WEBB
 SHELIA WEBBER
 LINDA WHEELY



EVA NELL WHITE
 LARRY WILKINSON
 JOHN WILLIAMS
 DWIGHT WOODS
 MARY WRIGHT



THE SOPHOMORE CLASS





FRESHMAN CLASS OFFICERS

FRANK DENNING.....*President*
SUE JONES.....*Reporter*
MARY ANN PAYNE.....*Secretary*
SHARON PARKER.....*Treasurer*
JIM MCGLOTHLIN.....*Vice-President*



FRESHMAN CLASS
SPONSORS

MR. SIDNEY BURTON
MISS EVELYN ALEXANDER
MRS. JOE WISEMAN
MR. CARA GREGORY

FRESHMEN FIND NEW PROBLEMS, NEW PLEASURES

FRESHMAN
STUDENT COUNCIL
REPRESENTATIVES

TONI WALKER
JIM MCGLOTHLIN
PAMELA POOLE





ANN ADAMS
 JANET ALLISON
 LEVERNE ANDERSON
 PAULETTE BARBER
 SANDRA BARBER

BOBBY BASKERVILLE
 RUBY BINION
 BILLY BOWERS
 DONNIE BREWSTER
 GLEN BRILEY

BERRY BROWN
 DAVID BROWN
 GERTRUDE BROWN
 LLOYD BROWN
 RUDY BROWN

CAROLYN BROWN
 LINDA BURSBY
 RONNIE CARDWELL
 LILLIE BELL CARNAHAN
 BETTY CLINARD

THE FRESHMAN CLASS

GAIL CLINARD
 LOVELLA CLINARD
 BRENDA FAYE CLOUSE
 FRANKIE COLEY
 MAURELLE COLLINS

JEANETTE CRAFTON
 MARK CRAFTON
 ROSIE DANIELS
 BRENDA DENNING
 FRANK DENNING



CAROLYN DENTON
 JOY DICKENS
 JOHN DINWIDDIE
 JERRY DOBBS
 JERRY DORRIS



JIMMY EDMUNDS
 CHARLOTTE EIDSON
 STEVIE EIDSON
 MIKE FAROUGH
 GAIL FLANIGAN



LINDA KAY FREEDLE
 EVANGELINE FREELAND
 JERRY GANN
 KAREN GARRETT
 PATSY GEORGE



WALTER GEORGE
 JIMMY GILES
 SUE GRAVES
 KENNETH GREGORY
 DALE HALL



THE FRESHMAN CLASS



FLORIA HALL
 BRENDA HARPER
 RONNIE HIGH
 LANETTA HUNTER
 LEROY HUMPHREY

JUNE JOHNSON
 FLOYD JONES
 SANDRA JONES
 SUE JONES
 LARRY KEEN



ELAINE KEPLEY
 JANE ELLEN KERLEY
 PATSY KIRBY
 SHERRY KRANTZ
 JIM LEGIEZA

WAYNE LYNCH
 ANN MCCLOUD
 PATRICK MCCLOUD
 JOYCE MCCOIN
 LEON MCCOIN

JAMES MCFARLAND
 JIM MCGLOTHLIN
 W. L. MARTIN
 RONNIE MONDAY
 GARNET MUNDAY

ROBERT PALMER, JR.
 SHARON PARKER
 BETTY PARKS
 MARY ANN PAYNE
 DEAN PERDUE

THE FRESHMAN CLASS

WAYNE PHILLIPS
 ANNETTA PITCHFORD
 DWIGHT POOLE
 PAMELA POOLE
 JULIA RAY

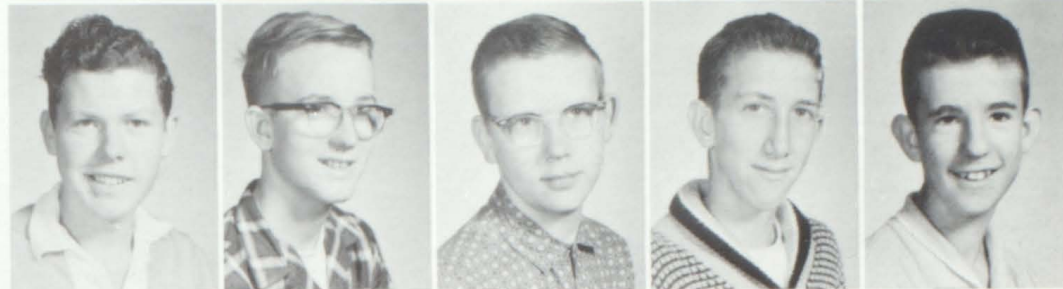


MIKE RAY
 WILLIAM REED
 LANNY RIGGSBEE
 JERRY RILEY
 VIRGINIA ROBERTS

JANET ROGERS
 PATSY ROGERS
 RAYMOND ROGERS
 PATSY SEARCY
 RONNIE SIMPSON



SAMMY SLOAN
 JACKIE STAGNER
 KENNETH STEVENS
 LARRY STEVENS
 DAVID STEWART



GLENDIA STORY
 JUDY SULLIVAN
 BUD THOMERSON
 HAROLD TRAMMEL
 GENEVA TUCKER



DIANE VANATTA
 KENNETH WALDEN
 TONI WALKER
 WILLIAM WARD
 RONNIE WATSON



THE FRESHMAN CLASS



DIANE WEST
 CHARLOTTE WHITE
 LOUISE WHITE
 GEORGE WILBER
 PATRICIA WILSON



ETTA WILSON
 SALLY WISE
 GLENDA YOUNG
 LINDA YOUNG



NEW

Honors . . .

NEW *Personalities . . .*

Awards . . .

Talents . . .

Royalty . . .

in our . . .

FEATURES



Gold Key

LANITA CARLYN BRADLEY

The faculty of Portland High School conferred upon Lanita C. Bradley the Gold Key award. This award is given to that senior who exhibits the most outstanding qualities of character, citizenship, personality, and scholarship.



Activities

•
ELIZABETH ANN MEADORS

On the basis of outstanding performance in all phases of school life Ann has been selected for this high honor. This is second only to the Gold Key award given by the faculty to a senior.

Valedictorian

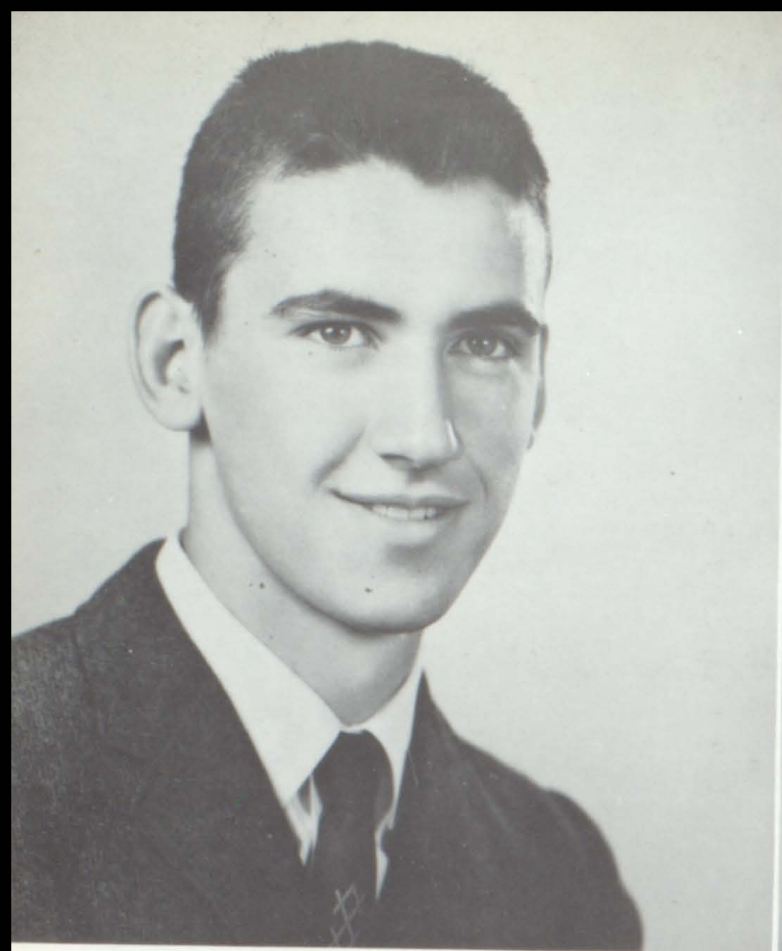
•
LANITA CARLYNE
BRADLEY

Lanita Carlyne Bradley has earned the distinction of being valedictorian of the senior class by achieving a point average of 3.897 out of a possible 4.000. This average being determined on seven semesters work.



Salutatorian

BARBARA ANN EDMUNDS
Barbara Ann Edmunds has earned the distinction of being salutatorian of the senior class by achieving a point average of 3.829 out of a possible 4.000. This average being determined on seven semesters work.



JIMMY KNIGHT



LINDA LIGON

Danforth Awards

The Danforth Awards given by the Danforth Foundation on the recommendations of the faculty to seniors who are outstanding in religious, social, physical and mental qualities has been awarded to Linda and Jimmy.



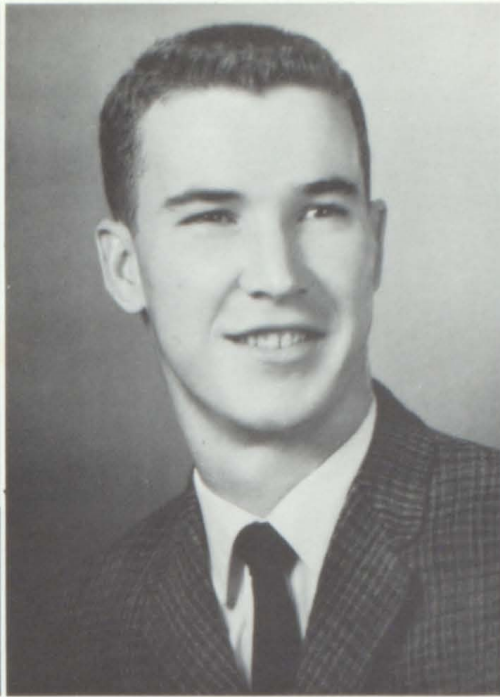
D. A. R. Good Citizen of the Year

LANITA CARLYNE BRADLEY

The Good Citizenship award sponsored by the Daughters of the American Revolution on the nomination of the senior class and confirmation of the faculty has this year been conferred on Lanita, who possesses outstanding qualities of citizenship.



COMMERCIAL
LINDA WOODS



AGRICULTURE
BILLY KEY



LANGUAGE
LANITA BRADLEY

Academic Awards

These persons have been selected as being outstanding in the various departments and have been confirmed by the faculty.

GIRLS' ATHLETIC
SHIRLEY WATSON

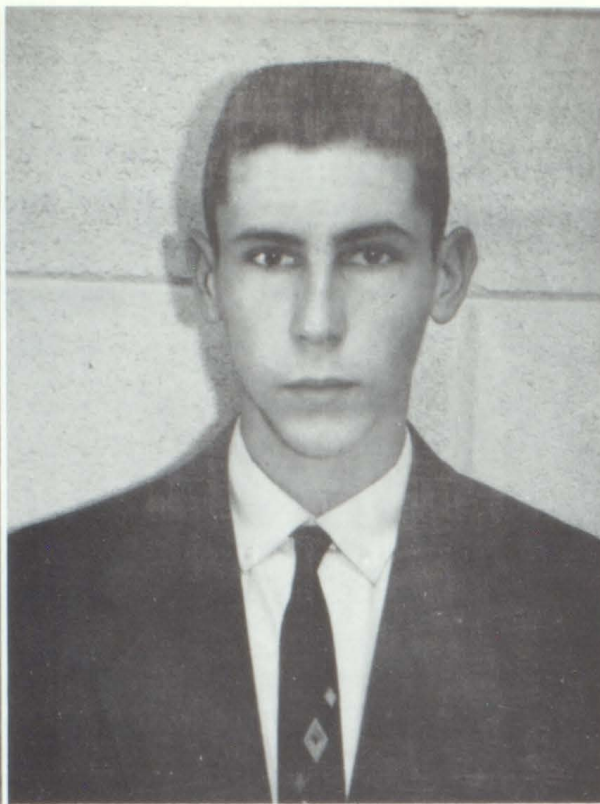
BOYS' ATHLETIC
JIMMY KNIGHT

HOME ECONOMICS
BETTY AUSTIN





SCIENCE
MARGARET GROVES



INDUSTRIAL ARTS
LEROY KIRKHAM

*Academic
Awards*

Girls' and Boys' State

NORMA C. WOODWARD
AND
KENNETH McDONALD





MsCALL'S TEEN AGE FASHION and
CRISCO HOME ECONOMICS
ANN MEADORS



FFA CHAPTER STAR FARMER
RONNIE PERRY



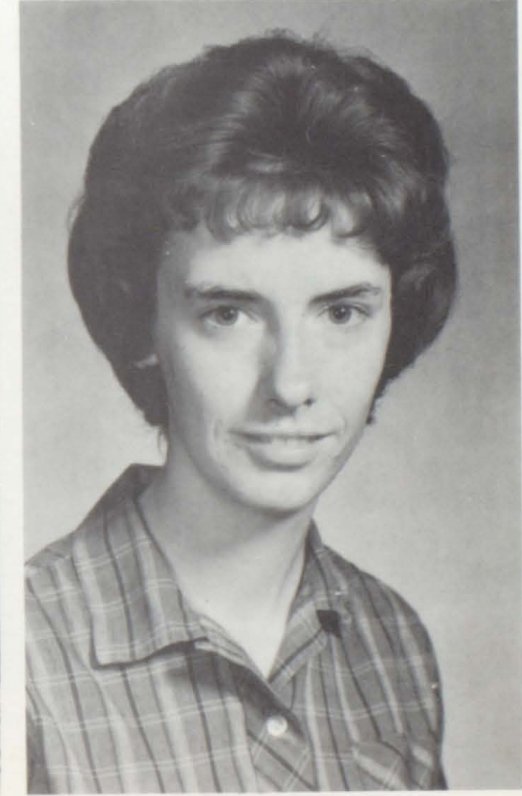
BETTY CROCKER HOMEMAKER
OF TOMORROW
NORMA C. WOODWARD

Departmental Honors

TYPING ACCURACY AWARD
1ST YEAR AWARD—66 WPM
CAROLYN KIRKHAM

DEKALB AWARD AND TENNESSEE
FFA VICE-PRESIDENT
BILLY W. KEY

TYPING ACCURACY AWARD
2ND YEAR AWARD—69 WPM
BARBARA EDMUNDS





These students were elected by their classmates, as the best representative of their class. They possess the following qualities: A good personality, good scholastic standing, and high spiritual values.

SENIORS

JIMMY KNIGHT
SHIRLEY WATSON

JUNIORS

MARY LYNN GRAVES
FRANKIE HARPER



Class Leaders •



SOPHOMORES
BILLY BRADLEY
DONNA HACKETT



FRESHMEN

LINDA BURSBY
JIM MCGLOTHLIN

Portland High Senior Superlatives •



MR. AND MISS WITTY
RAY SHORT
SYVILLA DUNHAM

MR. AND MISS VERSATILE
NORMA WOODWARD
JIMMY KNIGHT

These people were selected as the superlatives of the Senior Class. The Class voted on them by secret ballot, and they were approved by the faculty.



MR. AND MISS PERSONALITY

JUDY LEGGETT

BILLY KEY



MR. AND MISS COURTEOUS

MARY BOB SHANNON

JOE O'NEAL



MR. AND MISS
SCHOOL SPIRIT

WILLIAM McDONALD

JANET GRAVES

Senior Superlatives

MR. AND MISS ATTRACTIVE

LINDA LIGON

DAVID LINK



MR. AND MISS SUCCESS

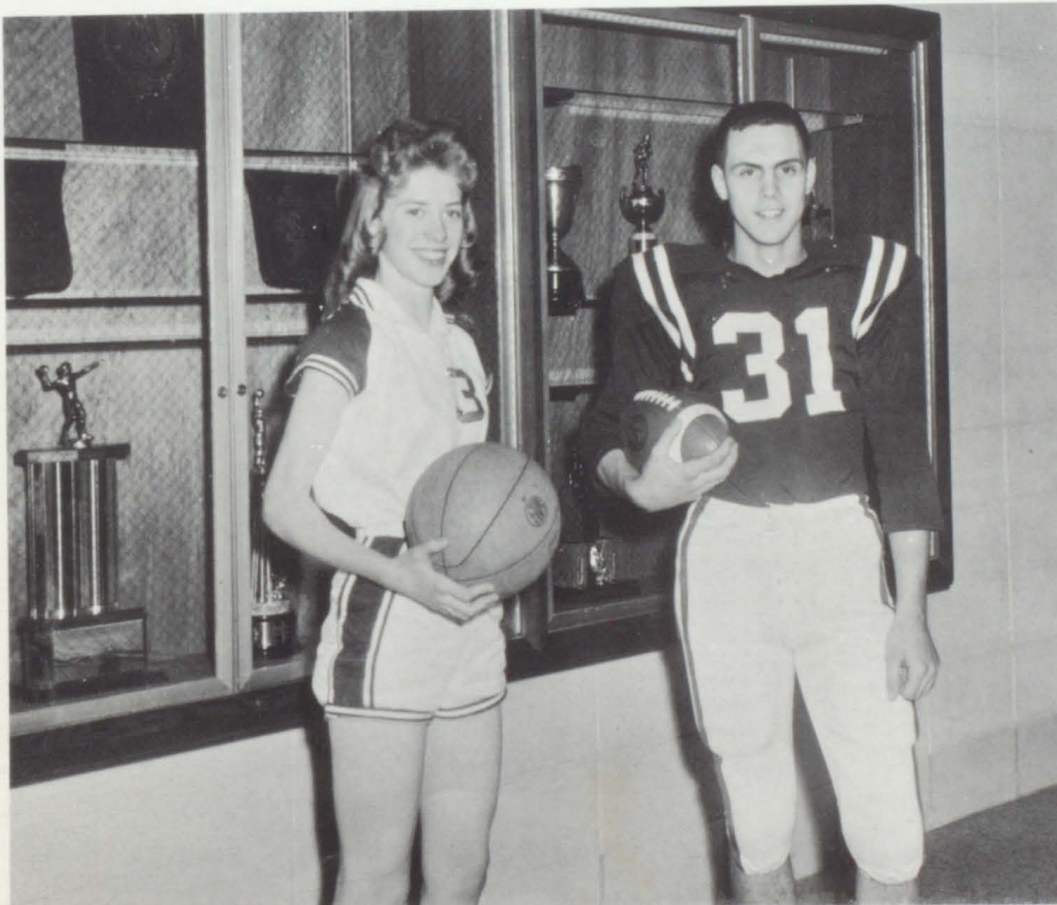
LANITA BRADLEY

LARRY CALLIS



Senior

Superlatives



MR. AND MISS ATHLETIC

SHIRLEY WATSON

KENNETH McDONALD



Mr. and Miss Portland High School

JIMMY KNIGHT

SHIRLEY WATSON

The highest honor any student can receive from the student body is Mr. and Miss Portland High School. Each must come from the senior class and is nominated by the Senior class, then they are elected by the entire student body. They meet qualifications in good personality, good scholastic standing and in honesty, cooperation, school spirit, dependability, courtesy, and spiritual values, thus summing up all the superlatives.



BASKETBALL CHEERLEADERS

The Basketball Cheerleaders are: From left to right: Sue Jones, Sandra Garrett, Lanita Bradley, *Captain*, Diana Lane, *Co-Captain*, Linda Brown and Allen Freeland in the center.





The 1961 Football Cheerleaders seated, from left to right: Mary Lynn Graves, *Captain*, and Linda Roney, *Co-Captain*. Standing, from left to right: Lanita Bradley, and Sandra Wattwood who are supporting Toni Walker, then Judy Wiseman, and Linda Kay Freedle who are supporting Barbara Brown.

FOOTBALL CHEERLEADERS



Linda Roney



Football Queen

1961-1962



Football Queen and Attendants

Each year the Panther Squad chooses a girl who has rendered the most loyal service and support to spirit and morale of the team as their "Queen." This year's Queen is Linda Roney. Her two attendants are Janet Graves and Mary Lynn Graves.

P.T.S.A. QUEEN
SANDRA GARRETT

F.F.A.-F.H.A. QUEEN
JANET GRAVES





NEW

Leaders . . .

NEW *Programs*
and Projects . . .

a NEW *spirit of*
Co-operation
as seen in our

ORGANIZATIONS



STUDENT COUNCIL

Left to right: Jimmy Knight, Boys' Vice-President, Sandra Wattwood, Norma Carol Woodward, Girls' Vice-President, Ann Meadors, Secretary-Treasurer, Kenneth McDonald, President, Pam Poole, Jim McGlothlin, Toni Walker, David Perdue, Edward Toney, Mr. Robert Grantham, Sponsor, Margaret Groves, Judy Leggett, Mrs. Joe Wiseman, Sponsor.

EXECUTIVE BOARD of the STUDENT COUNCIL



Left to right: Jimmy Knight, Boys' Vice-President; Norma Carol Woodward, Girls' Vice-President; Ann Meadors, Secretary and Treasurer; Kenneth McDonald, President; Mrs. Joe Wiseman, Sponsor; Mr. Robert Grantham, Sponsor.

The Student Council, the governing body of the school, is the organization that hold the school together. Each spring new Student Council officers are elected by the student body. The Student Council strives to be the link that creates a happy relationship between student and teachers.



Front row, left to right: Martha Stagner, Sandra Garrett, Lanita Bradley, Norma Carol Woodward, Sandra Wattwood, Marilyn Brown, Margaret Groves. Second row, left to right: Judy Hunter, Linda Marek, Carolyn Kirkham, Francis Collins, David Perdue, Randy McCloskey, Calvin Graves, Donna Garrett, Brenda McDonald, Mrs. Hunnicutt, Sponsor.

BETA CLUB

The Beta Club is a service organization serving the school and community in worthwhile ways. It is composed of Sophomores, Juniors, and Seniors who are considered excellent citizens. They must have no grade lower than A or B in all subjects and be approved by the faculty as outstanding students in all fields.



OFFICERS

Left to right: MRS. HUNNICUTT, Sponsor; CAROLYN KIRKHAM, Secretary; LANITA BRADLEY, President; MARGARET GROVES, Vice-President; JUDY HUNTER, Reporter.

PORTLAND HIGH SCHOOL BAND



First row, left to right: Jane Ellen Kerley, Linda Dillard, Janice Deasy, Co-Student Director; Anne Simonton, Patsy Dickens, Ann Bullard, Charles Hill Beatty, Betty Ausin, Marilyn Brown, Co-Student Director; Joy Carol Dickens, Second row: Martha Ann Austin, Mary Frances Hill, Ernestine Fuqua, Sheila Webber, Ruby Binion, Sandra Glassey, Janet Allison, Shirley Utley, Velma Wright, Becky Woods, Tommy Hester, Charles Jones, John Henry Williams. Third row: Melinda Miller, Judy Brown, Goldie Knight, Karen Garrett, Gail Flanigan, Mary Ann Payne, Co-Student Director; Larry Groves, Sheila Hunnicutt, Eldon Stinson, Sally Wise, Pamela Webb, Dale Hall, Ronnie Watson, Stanley Butt, Harold Dean Perdue, John Dinwiddie, Evangeline Freeland, James McFarland, Gail Searcy, Ronnie Lee, Jimmy Stewart. Fourth row: Raymond Wright, Judy Troutt, Judy Sullivan, Ruby Brown, Dwight Marcin, Roger Wright, David Perdue, Billy Denning, Mr. Sidney W. Burton, Director. Not Pictured: Cheryl Forbis, Johnny Giles, Carolyn Pippin, Mike Ray, Annetta Pitchford, Gayle Hammond, Jo Ann Jones, Kenny Walden.

Portland High School is proud to present the first Portland High School Band. The band now has sixty members and will be officially known as "The Panther Band."

The director, Mr. Sidney W. Burton says,
"I'm very happy with the progress of the band, but I can hardly wait to see how our second year will go."



Front— left to right: Velma Wright, Becky Woods, Sandra Garrett, Patricia Keen, Sandra Glassey, Sheila Hunnicutt. Standing: Bonnie Daugherty, Mr. Sidney Burton, Sponsor; Sherran Miller, Linda Marek, Benida Mayes, Sally Wise, Sue Hinton, Mrs. Cummings, Sponsor.

GIRLS' GLEE CLUB

The purpose of the Girls' Glee Club is to provide a chance to enjoy the pleasure and educational experience of singing in a group for those young women who deserve the opportunity to participate in such an organization.

SCIENCE CLUB

The Science Club, a member of the national organization, "Science Clubs of America," is sponsored by Mrs. Sara Thompson and Mr. Edgar Johnson. This year's project is aviation and the stimulation of interest in the Science Fair.

OFFICERS

JIMMY KNIGHT, *President*; MIKE DEASY, *Secretary-Treasurer*; LANITA BRADLEY, *Vice-President*; JOHN PATTON, *Reporter*.

Left to right, first row: Betty Austin, Freida Key, Benida Mayes, John Patton, Ricky Garrison, Robert Brewer, Carolyn Pitchford, Barbara Mink, Judy Hunter, Lanita Bradley. Second Row: Mrs. Sara Thompson, *Sponsor*; Gerry Brown, Maurelle Collins, Janet Allison, Janet Searcy, Ricky Webb, James Gail Searcy, Joe David Jernigan, Mike Deasy, John Briley, Larry Wilkinson, Jimmy Knight. Third row: Randy McCloskey, Carlos Harris, Jane Ellen Kerley, Larry Hardin, Jimmy Edmunds, Ed Toney, Jimmy Goad, Robert Buntin, Bobby Hester, Allen Poole, Wayne Cardwell, Bobby Joe Staggs, Mr. Edgar Johnson, *Sponsor*.





Left to right, first row: Sandra Wattwood, Janet Graves, Carolyn Kirkham, Margaret Groves, Ann Meadors, Norma Carol Woodward, Freida Minor, Shirley Watson, Betty Austin, Marilyn Brown. Second row: Mrs. Lloyd Freeland, Sponsor, Sherrill Durrett, Barbara Mink, Carolyn Pitchford, Patsy Rogers, Sandra Jones, Lanetta Hunter, Jane Burysek, Barbara Gregory, Glenda Fleming, Donna Barber, Joanne Parker, Carolyn Hodges, Shelia Hunnicutt. Third row: Patsy Searcy, Anne Gray, Millred Meador, Martha Eubanks Linda Ligon, Lynda Craigge, Marjorie Upchurch, Flora Hall, Patsy George, Judy Sullivan, Glenda Wakefield, Carolyn Link, Linda Brown, Sandra Glassey, Mary Frances Hill. Fourth row: Barbara Brown, Linda Roney, Bonnie Geminden, Peggy Cron, Gerry Brown, Shirley Johns, Joyce Gregory, Patsy Shadowens, Carol McFarlin, Diane West, Fay Clouse, Carol Lee, Patricia Dorris, Mary Ann Payne, Glenda George, Goldie Knight, Evangeline Freeland.



OFFICERS

Standing, left to right: MARILYN BROWN, Pianist; SHIRLEY WATSON, Recreation Leader; JANET GRAVES, Song Leader; SANDRA WATTWOOD, Parliamentarian; NORMA CAROL WOODWARD, Second Vice-President; MARGARET GROVES, First Vice-President; FREIDA MINOR, Treasurer; BETTY AUSTIN, Historian. Sitting: CAROLYN KIRKHAM, Secretary; ANN MEADORS, President.

FUTURE HOMEMAKERS OF AMERICA

F—Father we thank you for a very prosperous year and for
 H—homes that are so dear. Father bless us through the coming year
 A—and bless the strangers who linger near.



Front row, left to right: Mr. H. Cara Gregory, Allen Jones, Billy Woodall, Ray Jones, Mack Jenkins, Harlan Perdue, Donald Jones, Billy Key. Second row: Lum Wiseman, Bobby Legge, Douglas Kirkham, Norman Webb, Allen Freeland, Larry Garrett, Larry Perdue, Ray Gentry. Third row: Floyd Jones, Rudy Brown, Frankie Coley, Mark Johnson, Glen Briley, George Perdue, Tommy Minor, Dwight Woods, Ronnie Dorris, Robbie White, Leonard Hinton. Fourth row: Jackie Stagner, William Ward, Jerry Dorris, Leslie Farough, Ronnie Kirkham, Ronnie Perry, Jerry Carter, Eldon Stinson, Bobby Baskerville, Larry Stevens, Kenneth Stevens, Glendal Stevens. Fifth row: Robin Gregory, Leroy Kirkham, Bobby Hester, Milton Durrett, Mike Denning, Billy Finn, Billy Crafton, David Ray. Back row: Jerry Strother, Ralph Gregory, Donald Taylor, Walter George, Charles Jones, Larry McFarlin, Jerry Dobbs, Lanny Riggsby, Billy Brown, John Dinwiddie, Ronnie Belcher, Donnie Aldridge, Raymond Rogers, Billy Joe Greer.

FUTURE FARMERS OF AMERICA

The primary aim of the Future Farmers of America is the Development of agricultural leadership, cooperation, and citizenship. This year the Future Farmers are very capably lead by Mr. H. Cara Gregory.



OFFICERS

Left to right: MR. H. CARA GREGORY, Advisor; BILLY WOODALL, Sentinel; RAY JONES, Reporter; MACK JENKINS, Treasurer; DONALD JONES, Secretary; BOBBY LEGGE, Assistant Vice-President; HARLAN PERDUE, Vice-President; BILLY KEY, President.



LETTER CLUB

It is an honor, indeed, to become a member of the Letter Club. Each member must have already received his letter before joining. This year the Letter Club has sponsored the intramural games on Mondays and Thursdays. The students have taken an active interest in these games and enjoyed them very much. The sponsors of this club are Coach George Caudill and Mrs. Reba Jernigan.

OFFICERS

Left to right: MRS. REBA JERNIGAN, Sponsor; COACH GEORGE CAUDILL, Sponsor; MARY LYNN GRAVES, Secretary; JIMMY KNIGHT, Vice-President; DAVID LINK, President.

Left row, front to back: William McDonald, Jerry Strother, Joe Jernigan, David Link, Bill Smart, Jimmy Goad, Leslie Hinton, Joe Akin. Second row: Glenn Jenkins, Harry Summers, Powell Harrell, Kenneth McDonald, Randall Hinton, Jimmy Knight, Bill Johnson, Dwight Buntin. Third row: Linda Roney, Barbara Brown, Judy Wiseman, Donna Barber, Marjorie Upchurch, Mildred Meador, Lanita Bradley, Mary Lynn Graves, Donna Garrett, Linda Ligon, Janet Graves, Shirley Watson, Sandra Wattwood, Mrs. Reba Jernigan, Sponsor, Coach George Caudill, Sponsor.





Seated, left to right: Joyce Gregory, Shirley Johns, Carolyn Hodges, Joanne Parker, Sandra Garrett, Patricia Keen, Jackie Dorris, Nancy Ford, Linda Keen. Second row: Jeanette Taylor, Sally Wise, Linda Briley, Patsy Shadowens, Glenn Jenkins, Carol McFarlin, Carlene Adams, Sherry Krantz, Linda Marek, Peggy Cron, Patsy Legge, Lavoyce Cron, Bonnie Daughtery, Becky Woods, Miss Elisabeth Burnett, Sponsor. Third Row: David Perdue, Roger Wright, Dwight Marcin, Eva Nell White, Willie May Suddarth, Patricia Dorris, Freida Key, Velma Wright.

LIBRARY CLUB

Members of the Library Club work each day to create an interest in our greatest source of knowledge—books! All of these students have a definite interest in library work, and they believe that they can best begin their training in the

high school library. With the help of the librarian, Miss Elizabeth Burnett, students are given an experience that will give them many rewards for years to come.

OFFICERS

- GLENN JENKINS *President*
- SANDRA GARRETT *Vice-President*
- LINDA MAREK *Secretary*
- PATRICIA KEEN *Treasurer*
- DAVID PERDUE *Reporter*
- MISS ELISABETH BURNETT *Sponsor*





ACCURACY CONTEST
 HAM 45
 63
 TETT 51
 43
 B. EDMUNDS 44
 J. BURYSEK 44
 OODS 44
 UGHN 44

Front to back, first row: Bonnie Rogers, Betty Carol Hobdy, Shirley Scott, Jane Cravens, Nancy Ford, Gene Brown, Bobby Legge. Second row: Larry Mooneyhan, Linda Flatt, Janet Graves, Meredith Marlin, Barbara Edmunds, Aline Vaughn, Vera Sue Cron. Third row: Shirley Watson, Brenda George, Betty Webb, Patricia Givens, Judy Leggett, Billy Woodall, Judy Link, Jane Burysek. Standing: Syvilla Dunham, Anne Gray, Linda Roney, Barbara Brown.

PURPLE HERALD STAFF

The staff of the *Purple Herald* is proud that several extra pages have been added to this year's issues. These extra pages enabled the quality and quantity of all articles included in the paper to be improved. The school news coverage was not only accurate and complete,

but also told of school activities and presented school life in a colorful and informative way. We are immensely proud of this year's school papers and the fine work of the paper staff. This year's sponsor is Mrs. Pruett.



Barbara Edmunds, *Editor*, Bobby Legge, Gene Brown, Billy Woodall, *Mimeograph operators*.

FUTURE TEACHERS OF AMERICA

OFFICERS

Left to right: RANDY McCLOSKEY, *Parliamentarian*; JIMMY GOAD, *Treasurer*; JANET SEARCY, *Historian*; LESLIE FAROUGH, *Sergeant-at-Arms*; GLENN JENKINS, *Reporter*; LANITA BRADLEY, *Vice-President*; At desk: JUDY HUNTER, *President*; MARY BOB SHANNON, *Secretary*.



Left to right, first row: Mike Farough, Leslie Farough, Glenn Jenkins, Janet Allison, Mildred Meador, Lanita Bradley, Patricia Jones, Judy Hunter, Sheila Hunnicutt, Linda Kay Freedle, Lanetta Hunter. Second row: Carolyn Kirkham, Janet Searcy, Mary Bob Shannon, Freida Key, Randy McCloskey, Jimmy Goad, Carlos Harris, Bill Smart, Lynda Craigge, Benida Mayes, Brenda McDonald, Donna Garrett. At Desk: Miss Evelyn Alexander, *Sponsor*.

All members of the Future Teachers of America have one goal in mind when they join the club: To prepare themselves for their future lives as teachers. By being a member of this club, a student can be confronted with some of the problems as well as the enjoyments of teaching before he or she actually takes the big step into the teaching profession. The sponsor of this club is Miss Evelyn Alexander.

The Math Club, Delta Epsilon, sponsored by Mr. Billy Dye, has two main purposes: A. To increase the interest of students in Math. B. To encourage outstanding students to explore new horizons of mathematics. This year, the Math Club has had many interesting programs on the helpfulness of Math in choosing a career.

Left to right, front row: Allen Poole, Calvin Graves, Diane Vanatta, Toni Walker, Glenda Young, Linda Young, Sherry Krantz, Glenn Jenkins, Dale Hall, Ed Toney, John Patton. Second row: Judy Hunter, Donna Garrett, Kay Jernigan, Jane Ellen Kerley, Janet Searcy, Janet Allison, Freida Key, Lanita Bradley, Sue Jones, Maurelle Collins. Third row: Mr. Billy K. Dye, *Sponsor*, Joe David Jernigan, Clifford Adkins, Robert Brewer, Jimmy Goad, Larry Callis, Ricky Garrison, James Gail Searcy, Randy McCloskey, David Perdue, Larry Wilkinson, Ricky Webb, John Briley.



LANITA BRADLEY, *Vice-President*; LARRY CALLIS, *President*, JUDY HUNTER, *Secretary*.

MATH CLUB





*NEW Competition . . .
NEW Challenges . . .
Victories . . .
Losses Tears . . .
and Cheers
as SEEN in our*

ATHLETICS



Team Captains

DWIGHT BUNTIN..... Boys' Basketball
 MARY LYNN GRAVES..... Football Cheerleader
 LANITA BRADLEY..... Basketball Cheerleader
 SHIRLEY WATSON..... Girls' Basketball
 KENNETH McDONALD..... Football



Seated: Kay Jernigan, *Manager*; Judy Dobbs; Brenda George; Shirley Watson; Sandra Wattwood; Mary Lynn Graves; Brenda McDonald, *Manager*. *Standing:* Judy Wiseman; Carol McFarlin; Shirley Johns; Donna Barber; Janet Searcy; Mildred Meador; Marjorie Upchurch; Linda Kay Freedle; Coach Caudill.

GIRLS' BASKETBALL

STATISTICIANS

Kay Jernigan; Brenda McDonald; Randall Hinton; Gail Sircy.



BASKETBALL RECORD

Panthers.....	38	Coopertown	41
Panthers.....	26	Jo Byrns	37
Panthers.....	29	Springfield	56
Panthers.....	27	East Robertson	11
Panthers.....	27	Westmoreland	41
Panthers.....	25	Hartsville	56
Panthers.....	22	Greenbrier	49
Panthers.....	19	Hendersonville	36
Panthers.....	30	Hartsville	54

(Inv. Tournament)

Panthers.....	23	Hendersonville	47
Panthers.....	27	Jo Byrns	26
Panthers.....	18	Gallatin	28
Panthers.....	43	East Robertson	16
Panthers.....	33	Hillwood	41
Panthers.....	19	Whitehouse	39
Panthers.....	34	Coopertown	36
Panthers.....	31	Lafayette	53
Panthers.....	22	Westmoreland	47
Panthers.....	29	White House	31
Panthers.....	39	Springfield	44
Panthers.....	25	Gallatin	52
Panthers.....	19	Hendersonville	25
Panthers.....	19	Greenbrier	62
Panthers.....	28	Gordensville	35

DISTRICT TOURNAMENT

Panthers.....	28	Coopertown	37
---------------	----	------------------	----



Sandra Wattwood—F



Donna Barber—G



Mildred Meador—G



Marjorie Upchurch—G



Judy Wiseman—F



Judy Dobbs—G



Shirley Watson—F-Captain



Linda Kay Freedle—G



Janet Searcy—F



Carol McFarlin—F



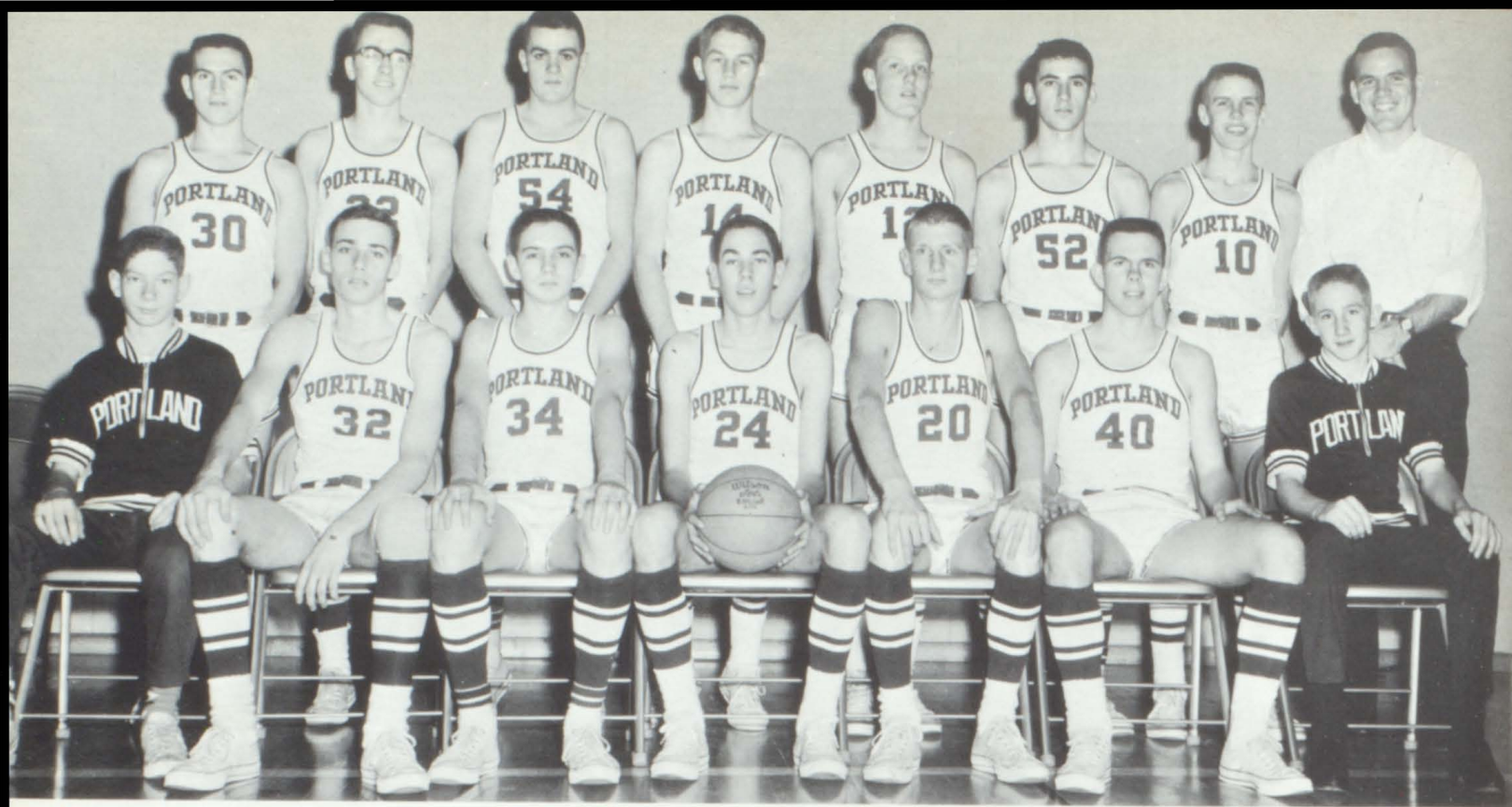
Mary Lynn Graves—G



Shirley Johns—G



Brenda George—G



Seated, left to right: George Wilber, Manager; Leslie Hinton; Bill Johnson; Dwight Buntin; Joe Akin; Frankie Harper; Jerry Strother, Manager. Standing: William McDonald; Joe O'Neal, Tommy Minor, Bill Smart, Jimmy Goad, Jimmy Knight, Joe Jernigan, Coach Caudill.

BOYS' BASKETBALL

BASKETBALL RECORD

Panthers.....66	Coopertown ...57
Panthers.....34	Lipscomb59
Panthers.....67	Jo Byrns28
Panthers.....46	Springfield ...48
Panthers.....65	East Robertson 40
Panthers.....54	Richardsville .56
Panthers.....61	Westmoreland .57
Panthers.....54	Hartsville37
Panthers.....55	Greenbrier47
Panthers.....48	Hendersonville 49
Panthers.....56	Hartsville36

(Inv. Tournament)

Panthers.....50 Springfield ..54

Panthers.....57	Jo Byrns42
Panthers.....45	Gallatin49
Panthers.....55	East Robertson 51
Panthers.....52	Hillwood58
Panthers.....56	White House ..42
Panthers.....69	Coopertown ...34

Panthers.....44	Lafayette50
Panthers.....46	Westmoreland 36
Panthers.....54	White House .41
Panthers.....51	Springfield ...55
Panthers.....55	Gallatin71
Panthers.....35	Hendersonville 49
Panthers.....57	Greenbrier62
Panthers.....74	Gordensville ..66

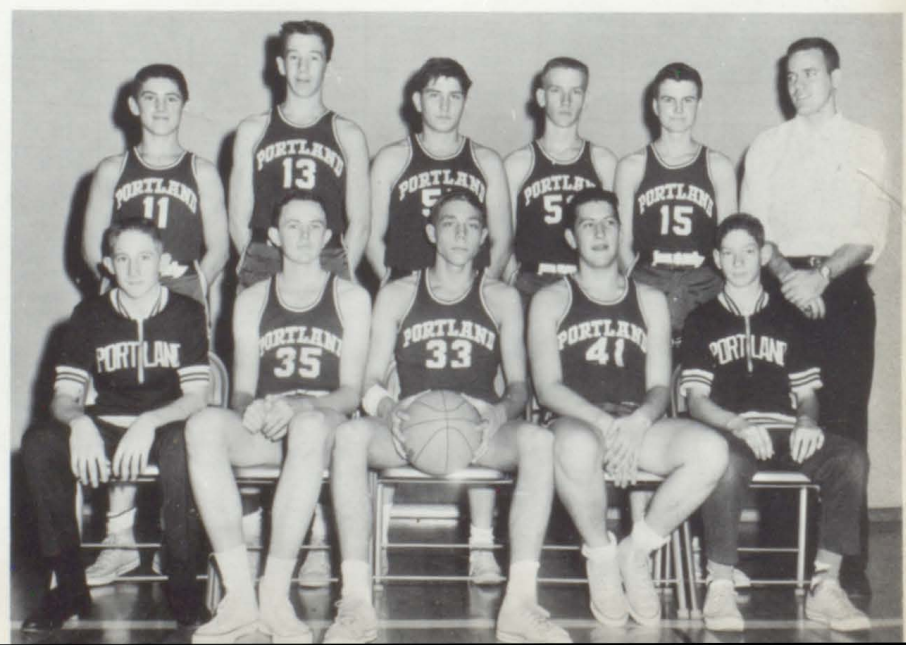
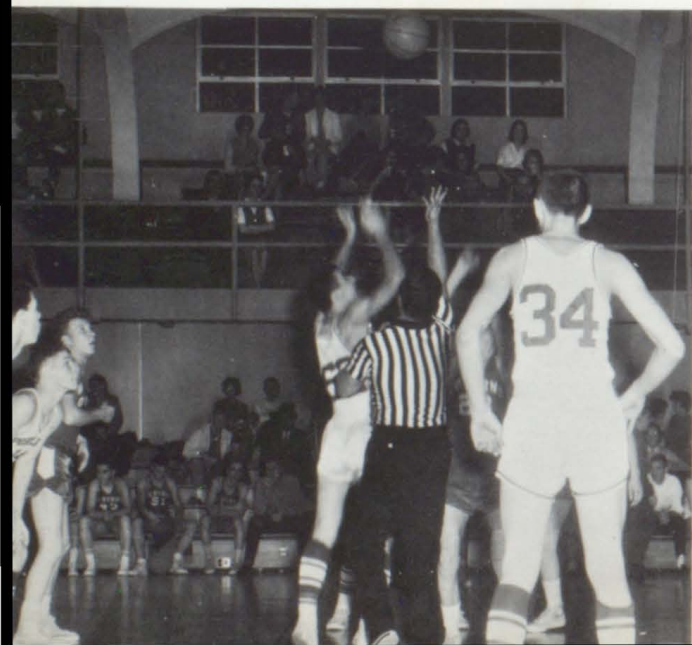
DISTRICT TOURNAMENT

Panthers.....46	Lafayette57
-----------------	-------------------

"B" TEAM

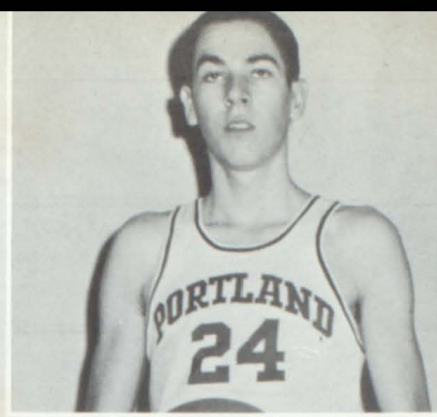
Seated: Jerry Strother, Manager; Bobby Brewer; Mike Denning; Jerry Carter; George Wilber, Manager. Standing: Mark Johnson; Clifford Adkin; Billy Finn; Terry Eakes; John Briley; Coach Caudill.

Knight goes up for the tip against Jo Byrns.

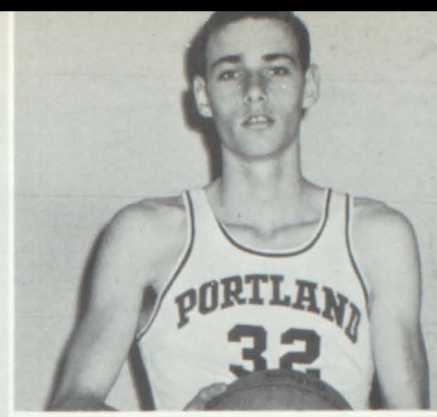




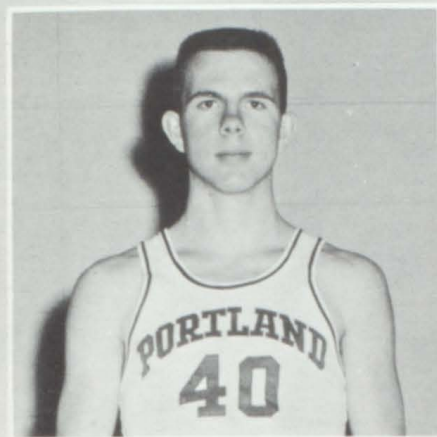
Joe Akin—G



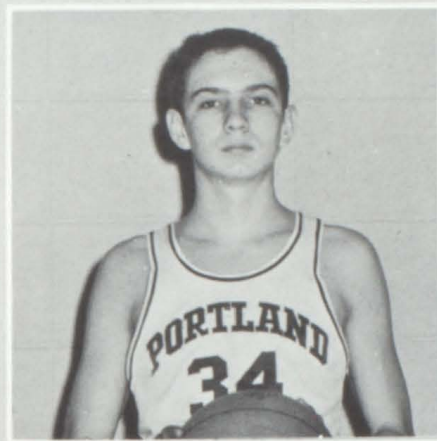
Dwight Buntin—F-Captain



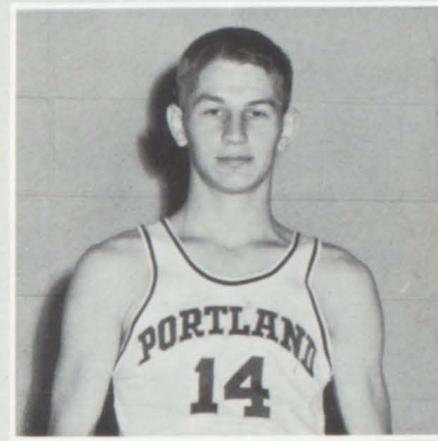
Leslie Hinton—C



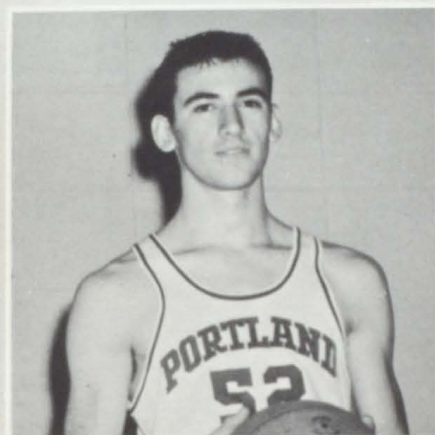
Frankie Harper—F



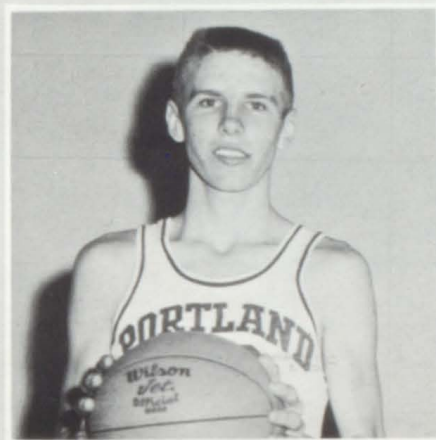
Bill Johnson—F-Co-Captain



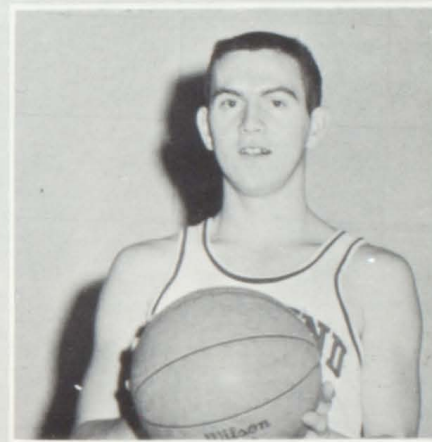
Bill Smart—G



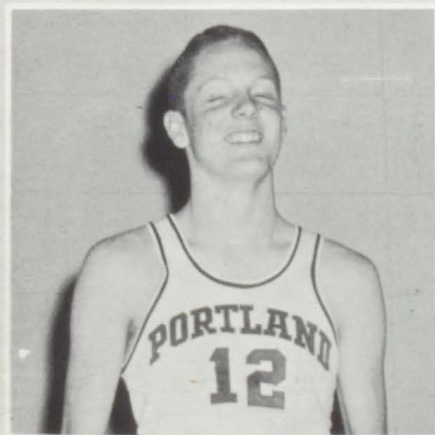
Jimmy Knight—C



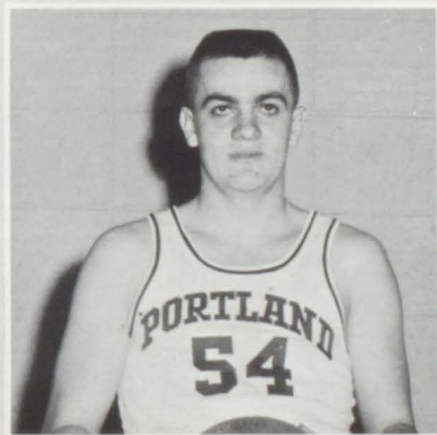
Joe Jernigan—G



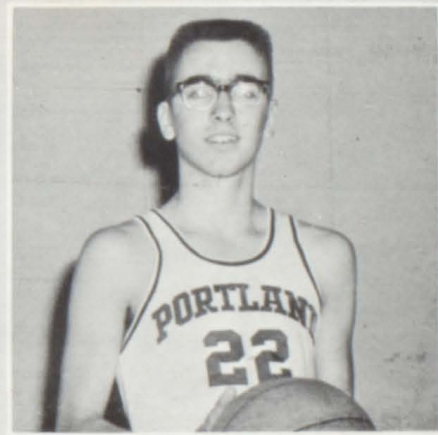
William McDonald—G



Jimmy Goad—G



Tommy Minor—F



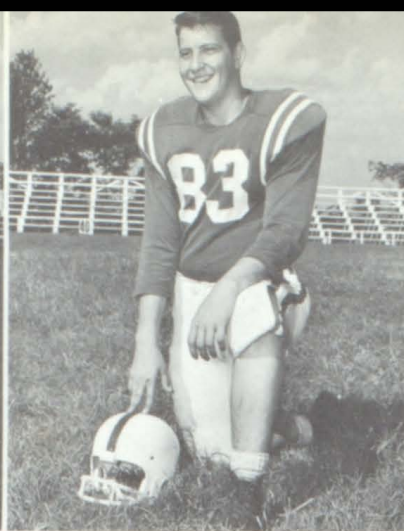
Joe O'Neal—F



C. Adkins—E, Senior



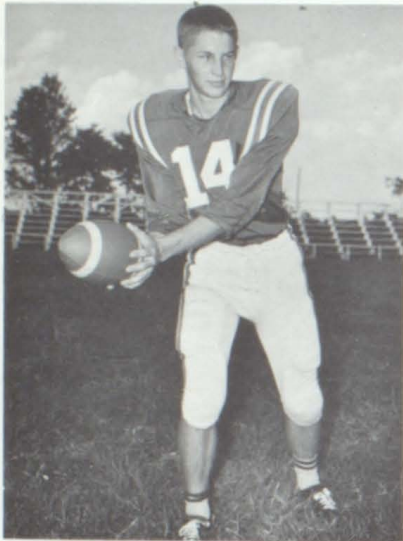
J. Crafton—HB, Senior



J. Carter—E, Sophomore



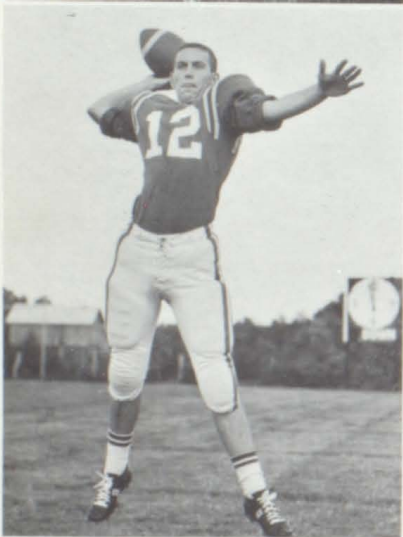
H. Perdue—C, Junior



B. Smart—QB, Junior



H. Summers—G, Senior,
Most Valuable Lineman



T. Minor—E, Junior

W. McDonald—QB, Senior



K. (Cookie) McDonald—HB,
Senior, Most Valuable Back
in Ind. Bowl, Captain

THE

Panthers.....	0	T. P. S.....	6
Panthers.....	6	Franklin, Ky.....	6
Panthers.....	13	Celina.....	0
Panthers.....	0	Springfield.....	25
Panthers.....	0	Lebanon.....	21
Panthers.....	13	Lafayette.....	7
Panthers.....	20	Hartsville.....	0

P. Harrell—C-G, Junior

L. Jones—G, Junior

M. Durrett—T, Junior

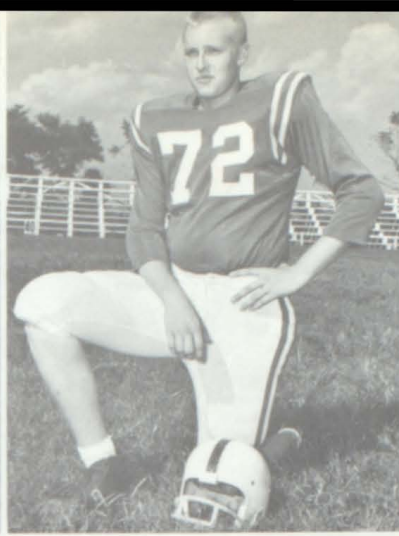




D. Meadows—HB, *Junior*



B. McCormack—T, *Junior*



L. Callis—T, *Senior*



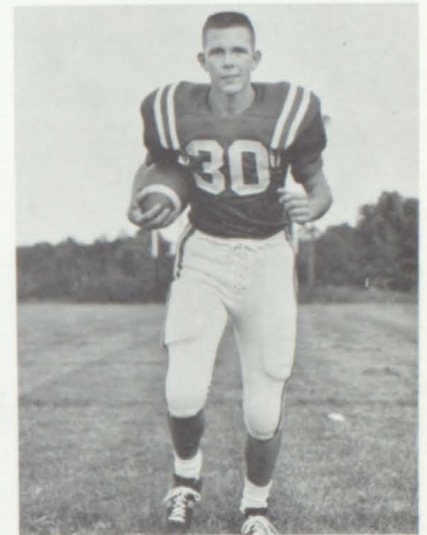
B. Finn—T, *Sophomore*



D. Link—HB, *Senior*,
Most Valuable Back,
All NCC,
Alternate Captain



J. Knight—E, *Senior*
Sportsmanship
Alternate Captain



F. Harper—FB, *Junior*

RECORD

Panthers	20	Clarksville	7
Panthers	32	Livingston	0
Panthers	14	Gallatin	0

INDUSTRIAL BOWL

Panthers	19	Carthage	7
Total	137	Total	79

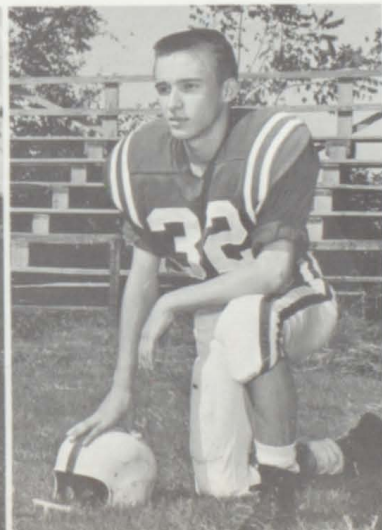
B. Thomerson—HB,
Freshman



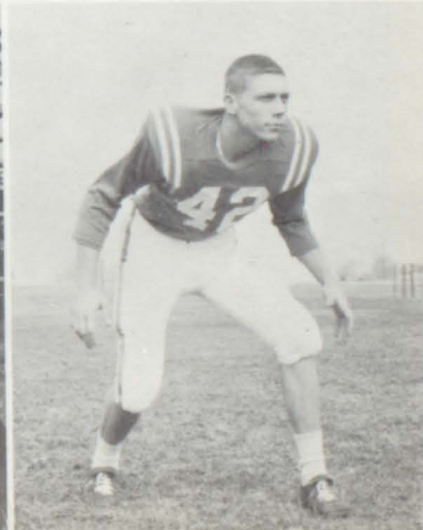
C. Harris—T, *Junior*



J. Searcy—HB, *Senior*



M. Denning—QB, *Sophomore*

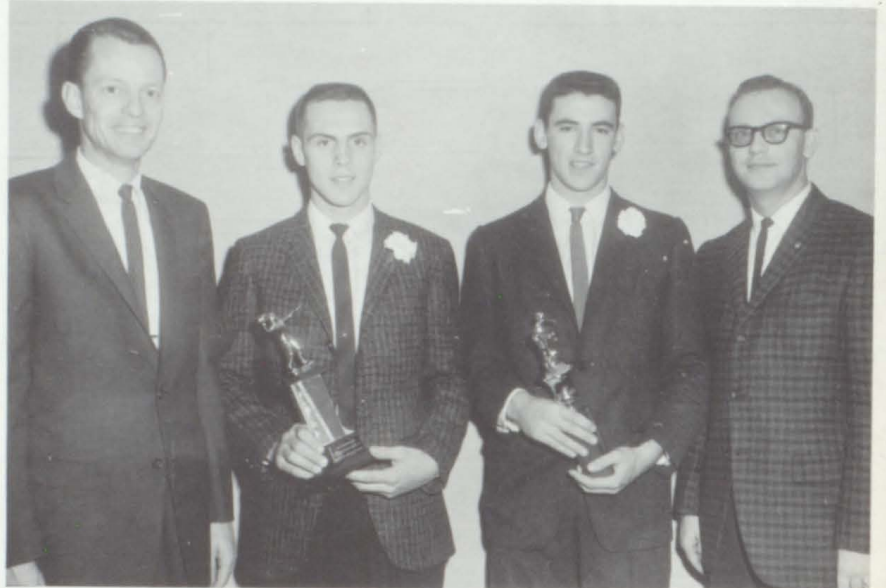




The Purple Panthers



McDonald after a short gain against Carthage in the Industrial Bowl.

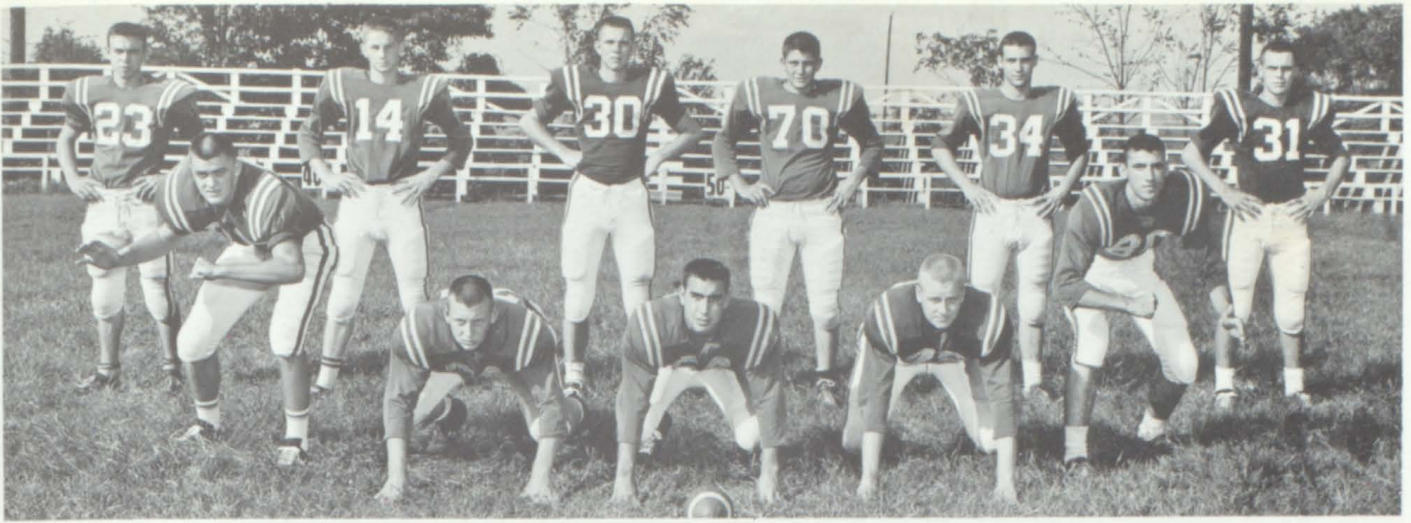


Bob Perry and Lee Raines present Kenneth McDonald and Jimmy Knight trophies for a year of outstanding work.

FOOTBALL

This offense rolled up 137 points against 11 teams this year.





This fine defense held 11 teams to a total of 79 points.



Paul A. West and Miller Goad present David Link and Harry Summers their most valuable player trophies.



Coaches Caudill and Johnson talk over strategy for the on-coming year.

"B" TEAM

These boys are looking into the future for they will then be the "Panthers."





NEW

Horizons . . .

NEW *Responsibilities . . .*

*a whole NEW concept
of Life in our*

JUNIOR HIGH



Mr. and Miss Junior High

DOUG WATTWOOD and MELINDA MILLER



Left to right: Billy Dye, George Caudill, Harris Ferguson, Evelyn Johnson, Carl Fussell.

Faculty

MR. ROY JONES
B.A., Western Kentucky State
M.A., Peabody
Eighth Grade Sponsor

MR. J. C. BIGBEE
B.S., Western Kentucky State College
Sixth Grade Sponsor



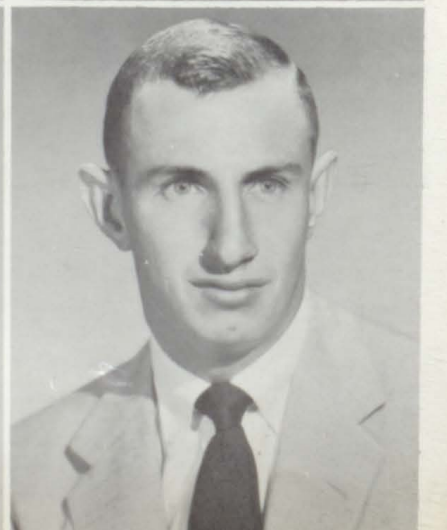
MRS. SAM DYE
B.S., M.T.S.C.
Eighth Grade Sponsor

MRS. J. W. DYE, JR.
B.S., T.P.I.
Seventh Grade Sponsor



MRS. WILBURN EMPSON
B.S., M.T.S.C.
Sixth Grade Sponsor

MR. CARL FUSSELL
B.S., Tennessee Tech
Eighth Grade Sponsor



JUNIOR HIGH FACULTY

Left to right, first row: Carl Fussell, Mrs. J. G. Legge, Mrs. Forrest Hill, Miss Rosalie Stubblefield, Mrs. Paul Yokley. Second row: Mrs. Sam Dye, Mrs. Hulon Turner, Mrs. Wilbur Empson, Mrs. Spencer Stinson, Mr. J. C. Bigbee, Mr. Roy Jones, Mrs. J. W. Dye, Jr.



MRS. FORREST HILL
A.B., Western Kentucky State, M.A., Peabody

MRS. J. G. LEGGE
B.S., M.T.S.C.
Sixth Grade Sponsor



MRS. SPENSER STINSON
Piano-Music

MISS ROSALIE STUBBLEFIELD
B.S., M.T.S.C.
Seventh Grade Sponsor



MRS. HULON TURNER
B.S., M.T.S.C.
Eighth Grade Sponsor

MRS. PAUL YOKLEY
B.S., Western Kentucky State College
Seventh Grade Sponsor



EIGHTH GRADE CLASS OFFICERS

Left to right: MELINDA MILLER, President; DOYLE MANNING, Vice-President; JOHNNIE MUNDAY, Secretary-Treasurer; LARRY YOUNG, Reporter.

Eighth Grade

Martha Austin
Charles Hill Beaty
Charlotte Bowman
Bonita Briley
Ronnie Briley
Leon Brooks
Dianne Brown



Judy Ellen Brown
Judy Karen Brown
Margie Brown
Ann Bullard
Donnie Bush
Stanley Butt
Barbara Carpenter



Bobbie Carter
Jackie Carter
Judy Choate
Larry Clinard
Ricky Coker
Bobby Crafton
Edd Craigg



Larry Crowder
Mary Culberth
Patsy Dickens
Mary Dixon
Emma Eden
Ricky Finn
Larry Fisher



Beverly George
Sherman Glover
Linda Goodman
Gary Grantham
Peggy Gregory
Gary Graves
Larry Graves



EIGHTH GRADE



Reatha Graves
John Groves
Mike Hammond
Ray Harris
Tommy Hester
Dianne Hudson
Barbara Hunter



Robert Jenkins
Ronnie Johns
Ernie Johnson
Henry Johnson, Jr.
Sandre Johnson
Cheri Keen
J. C. Keen



James Kepley
Jettie Ruth Kirby
Larry Lane
Gary Leggett
Roger Long
Thomas McCormick
Doyle Manning



Toni Marek
John Marlin
David Marcin
Mike Martin
Linda Mathias
Don Mayes
Brenda Meador



Donnie Meador
Harry Miller
Melinda Miller
Johnie Munday
Freddie Montgomery
Dianne Munday
Larry Patton



Joe Payne
Delores Pearson
Freddie Perdue
Wayne Perdue
Dalton Perry
Jerry Phillips
Linda Piper



Barbara Poole
Donnie Poole
Jerry Rawls
Ronnie Ray
Judy Riley
Peggy Rogers
Barbara Searcy



Sandra Short
Anne Simonton
Dora Sircy
Leona Snider
Leslie Stinton
Dely Suttle
Judy Suttle



Joyce Tucker
Brenda Vanatta
Pam Webb
Patsy White
Wayne White
Raymond Wright
Larry Young

*Bookish
Donnie
Meador*



SEVENTH GRADE CLASS OFFICERS

SUE COLEY.....President
 CLAUDINE POOLE.Vice-President
 LARRY BRADLEY.....Secretary
 VICKIE LINDSEY.....Reporter

Seventh
 Grade

Kathy Armstrong
 Walter Baily
 Jim Bandy
 Connie Barber
 Jim Barber
 Jo Ann Bill
 Benny Bennett



Larry Bradley
 Mike Bradley
 Danny Brown
 Danny L. Brown
 Steve Brown
 Ann Buntin
 Foster Butt



Allen Ray Carter
 Jerry Carter
 Connie Christian
 Wayne Cole
 Sue Colley
 Tony Cothron
 James Crabtree



Patsy Cron
 Dennis Crowder
 Don Cummings
 Kathy DePriest
 Fred Dinwiddie
 Bill Dixon
 Jackie Dobbs



Janice Dobbs
 Ronnie Dobbs
 Harold Dowell
 Jimmy Douglas
 Wanda Dulin
 Phyllis Durham
 Kay Durrett



Jerry Eden
 Kenneth Fickle
 Jimmy Gentry
 Kenneth Gilliam
 Barbara Goostree
 Ronnie Graves



SEVENTH



Judy Gregory
 Steve Gregory
 Vicki Gregory
 Harold Groves
 Larry Groves
 Danny Hackett
 Betty Harper

Allen Hayden
 Jerry Henson
 Bruce Hicks
 Trudy Hodges
 Jacky Hunter
 William Hunter
 Ray Jacobs

Janice Johnson
 Glenda Jones
 Joyce Jones
 Larry Jones
 Johnny Kerley
 Glenn Kirkham
 Sue Lee

David Legge
 Vickie Lindsey
 Leslie Long
 Jerry McDowell
 Larry Glothlin
 Sue McGuffie
 Ronald Martin

Steve Martin
 Terianna Mayes
 Gary Meador
 Roy Lee Minnis
 Mary Parks
 Donna Petty
 Linda Phillips

Jimmy Pipin
 Charlotte Poole
 Claudine Poole
 Joe Poole
 Ronnie Poole
 Gail Porter
 Barbara Sue Pryor

Linda Ray
 Mike Ray
 Mike Reddick
 Jackie Riggsby
 James Robinson
 Brenda Scott
 Bubby Simonton

Clifton Simmons
 Marie Stagner
 Linda Stewart
 Nancy Stinson
 Brenda Suttle
 Kathy Suttle
 Pam Suttle

Patsy Suttle
 Charles Trammel
 Larry Upchurch
 Carolyn Walker
 Timmy Walker
 Douglas Wattwood
 David Webb

Rodney Wilkinson
 Charles Williams
 Gerald Williams
 Melvin Woodall
 James Youngblood

SIXTH GRADE CLASS OFFICERS

From bottom to top:

WANNA FINN.....*President*
 NANCY PALMER...*Vice-President*
 DONNA COLLINS.....*Secretary*
 CAROLYN RODGERS...*Treasurer*
 TERRY RAY.....*Reporter*

Sixth Grade

Susan Adcock
 Nancy Akin
 Monecca Aldridge
 James Beasley
 Sherri Blackburn
 Garvin Bowman
 Mike Bowman

Martha Bradley
 Eddie Brinley
 Barry Brown
 Linda Carter
 Donna Collins
 Gary Conyers
 Mike Conyers

Louise Crowder
 Tommy Daughtery
 Robert Denton
 Joyce Dobbs
 Judy Dorris
 Terry Durrett
 Betty England

Wayne England
 Patricia Ertner
 Wanna Finn
 George Flanigan
 Connie Freedle
 Jerry Hutchinson
 Judy Garrison

Peggy Geminden
 Debbie Gilliam
 Patsy Ann Glover
 Alvin Goodwin
 Roger Goostree
 Danny Green



SIXTH



Shelia Gregory
 Teresa J. Grubbs
 Janice Hardin
 Mike Harris
 Connie Harper
 Shirley Harper
 Darlene Hinton

Mike Hodges
 David Hodges
 Gary Hunter
 James Hunter
 Pat Hunter
 Vicki Hunter
 Dorothy Johnson

Dwight Johnson
 Nancy Johnson
 Miles Jones
 Norman Keen
 Vicki Keith
 Patty Sue Key
 Mary Kirby

Loyd Knight
 Barbara Legieza
 Steve Long
 Helen Lynch
 Elaine McGlothlin
 Linda McGuffie
 Kathy Martin

Billy Meadors
 Ronnie Meadors
 Shirley Meadors
 Bill Miller
 Patricia Maye
 David Nuckles
 Nancy Palmer

Shirley Parker
 David Pearson
 Lloyd Pearson
 Carol A. Pedigo
 Ralph Perdue
 Linda Philips
 Lanny Poole

Lila Poole
 Patricia Prater
 Donald Puckett
 Terry L. Ray
 Carolyn Rodgers
 Otha Simmons
 Anita Stewart

Milton Stinson
 Jackie Suttle
 Janice Taylor
 Joyce Taylor
 David Thomas
 Ronnie Vanatta
 Glen Walker

David West
 Jerry White
 John D. White
 Barbara Whitley
 Larry Williams
 Harlon Wix
 Joyce Wright



Sponsors for the eighth grade are Jones, Mrs. Turner, Mrs. Dye, and Fussell.



The favorites from the eighth grade are Martha Ann Austin and Deloy Suttle

EIGHTH GRADE

Favorites and SPONSORS

The seventh grade sponsors are Mrs. Yokley, Miss Stubblefield, and Mrs. Dye

SEVENTH





The sponsors for the sixth grade are Mrs. Legge, Mrs. Empson, and Bigbee.



The sixth grade favorites are Vickie Keith and Billy Meadow

SIXTH GRADE

GRADE



Favorites and SPONSORS

The favorites for the seventh grade are Pam Suttle and Dennis Crowder



Junior High Football Squad



Captain Ray Harris
Alternate-Captain Billy Jones



Junior High Football Queen and Attendants.
Anne Simonton, Queen Judy Brown, Martha Ann Austin.

The cheerleaders starting from left:
Anne Simonton, Martha Ann Austin,
Kathy DePriest, Patsy Dickens,
Connie Christian, Kathy Armstrong,
Jettie Ruth Kirby.





The Junior High Boys' Basketball Squad with Coach Fussel and the managers Gary Grantham, Stanley Butt, and Larry Young.

The Girls' Junior High Basketball Squad with their coach, Coach Fussel, and the managers Judy C. Brown, and Judy E. Brown.





Mrs. Stinson and the Jr. High Glee Club.



Mrs. Hill's Class

STARKS HOME STUDIO

534 Hartsville Pike

GALLATIN, TENNESSEE

RANDY'S RECORD SHOP

Gallatin, Tennessee

Gallatin Aluminum Products Co.

*Manufacturers of Aluminum Storm
Windows and Doors*

P. O. Box 469

Gallatin—Tennessee—Nashville

Phone 452-4550 Phone 824-6839

CONTINENTAL TRAILWAYS

CONTINENTAL TENNESSEE LINES, INC.

Nashville, Tennessee

READY POPPED CORN
FOR EVERY OCCASION

RUSSELL'S POPCORN SERVICE

Hartsville, Tenn.

*In 1961 We Shipped Ready Popped Corn
Into 19 States Including Hawaii*

CONSUMERS DRUG CO.

THE REXALL STORE

Phone 325-2014

Portland, Tennessee

Vic Jenkins Motor Co.

Gallatin, Tenn.

Glen's Texaco Service

400 West Main Street
Phone 425-2521
Road Service
Gallatin, Tennessee

Oakes Dari Delite

Gallatin, Tenn.

James Brown

Tax Assessor of Sumner County
Gallatin, Tennessee

National Store

Gallatin, Tenn.

Gallatin Book and Jewelry

Jewelry—School and Office Supplies
Phone 452-3595
Gallatin, Tennessee

Brown Milling Co.

Gallatin, Tennessee

Parks Realty Company

Auctions—Private Sales—Appraisals
Phone 452-4530
Gallatin, Tennessee

Duncan Drug Corp.

Prescription Specialists

Phone 425-2673

Raymond A. McCullough George Hamilton
Gallatin, Tennessee

Gallatin Upholstery

Phone 452-4373

109 South

Porter W. Womack

Register of Sumner County

Gallatin, Tennessee

Compliments of

GALLATIN PORTLAND FREIGHT LINES

Gallatin Phone 452-5688 Tenn.

Hudgen's Equipment Co.

Your International Harvester Dealer

Gallatin, Tennessee

Compliments of

Bank of Hendersonville

Member FDIC

Hendersonville, Tennessee

R. C. Owen Company

Gallatin, Tennessee

Thompson Used Cars

Phone 325-2388

Portland, Tennessee

YOUNG DRUG CORP.

Your Prescription Store

Phone 325-2012

Portland, Tennessee

CONSUMERS DRUG CO.

The Rexall Store

Phone 325-2014

Portland, Tennessee



Portland Hostess Queen and Court

PORTLAND SHELL

*Lubricating, Washing—Shell Oil and
Gas—Motor Tune-Up—Complete
Brake Service*

Phone 325-2570 Portland, Tennessee

Rail Oil Company, Inc.
Gallatin, Tennessee

Compliments of

**American Paper and
Twine Co.**

THE FARMER'S BANK

Member F. D. I. C.

Portland

Tennessee

Compliments of

City of Portland Gas and Water

Phone 325-3434

Portland

Tennessee

BARBER'S FUNERAL HOME

Milldale

White House

Portland

Orlinda 2121

Portland 325-3791

WILKINSON AND WISEMAN

Funeral Home

Portland, Tennessee

BOOKER'S STORE

Ladies' and Men's Furnishings

Portland, Tennessee

CASH AND CARRY MARKET

Portland, Tennessee

Moore's Dept. Store

Portland, Tennessee

Payne Brothers

Seed—Feed—Fertilizer

Phone 325-2470

Portland, Tennessee

Lloyd Freeland

GENERAL HAULING

Phone 325-3685

Portland, Tennessee

Brizendine's Food Center

Portland, Tennessee

Pearson & Searcy

*Welding, Autos, Trucks and
Farm Equipment*

Phone 325-2566

Portland, Tennessee

Compliments of
Short's Cleaners

Portland, Tennessee

Portland Fabric Shop

*Springfield Woolens and Other Fabrics
Roger's Lingerie Warner Line*

Portland, Tennessee

Farmer's Trade Center

Portland, Tennessee

Portland Coal and Supply Co.

Portland, Tennessee

Briley's Bi-Rite Food Store

Phone 325-2596

Portland, Tennessee

Hunter Super Market

Highway 109 South

Portland, Tennessee

Farmer's Feed and Seed Co.

Phone 325-2514

Portland, Tennessee

Chandler's

Portland, Tennessee

Kraft Foods

Portland, Tennessee

Moore Motor Company

Portland, Tennessee

Farmer's Feed Mill

Feeds and Fertilizer

325-3651

Portland, Tennessee

TRIBUTE TO A FINE CLASS IN A GREAT SCHOOL

Congratulations and Best Wishes

IRVING HARRIS — BOB GILBREATH

TOM YOKLEY — JOHN HARRIS

P. O. Box 496, Jackson, Tennessee

L. G. BALFOUR COMPANY

Jewelry's Finest Craftsmen

CLASS RINGS AND PINS — CLUB INSIGNIA
MEDALS — TROPHIES — PLAQUES — DIPLOMAS
COMMENCEMENT INVITATIONS

Compliments of

**TAYLOR
SUPPLY CO., INC.**

625 Seventh Avenue, South

Nashville, Tennessee

W H I N

*Serving Portland and Upper
Sumner County with Local News
and Local Advertising*

1010 KC
Gallatin

1000 Watts
Tennessee

**Sumner County
Co-op Creamery**

Gallatin, Tennessee

**Planters
Tobacco Warehouse**

Gallatin, Tennessee

Hancock Burley Sales

Gallatin, Tennessee

**Gallatin Tobacco
Warehouse Company**

Gallatin, Tennessee

**KY.-TENN.
TRUCK STOP**

Home Cooked Meals

Highway 31 West
5½ Miles South of Franklin, Ky.

NELLIE AND JIMMY MAYES

Compliments of
Franklin Dentists

Franklin, Kentucky

Houchens Market

Franklin, Kentucky

B. G. Wholesale, Inc.

Bowling Green, Kentucky

With Our Compliments

Putt-A-Round

MINIATURE GOLF

Franklin, Kentucky

Sales—Service—Parts

Don Dunn Implement Co.

Modern Power Farm Equipment

Phone JU 6-4144

Franklin, Ky.

For the Best in Refreshments

Frosty Freeze

433 South Main
Franklin, Kentucky

Yokley Machine Co.

Phone JU 6-4141
Franklin, Kentucky

Compliments of

Hutch's Hut

Franklin, Kentucky

Seed, Feed, and Grain

Farmers Elevator Co.

Franklin, Kentucky

Lerman Bros.

*Satisfaction Guaranteed or Your
Money Cheerfully Refunded*

Phone JU 6-3672
Franklin, Kentucky

Gillespie Dry Goods Co.

House of Dependable Merchandise

Franklin, Kentucky

**Simpson County
Seed & Implement Co.**

Franklin, Kentucky

Young's Dept. Store

Franklin, Kentucky

*The next time you are in our city, come in
as I would like to meet you.*

Mr. J. W. Warden, Manager

Moore's Rexall Drugs

Since 1874

Franklin, Kentucky

Compliments of
Potter and Brumfield

Franklin, Kentucky

Dr. Martin

Dentist

Franklin, Kentucky

Compliments of
Forrest A. Dinning

Compliments of
Joe P. Clark
Attorney at Law
Franklin, Kentucky

Simpson County Bank

Franklin, Kentucky

The Franklin Favorite
and

W F K N

Franklin, Kentucky

Franklin Bank & Trust Co.

Franklin, Kentucky

"So Proudly We Serve"

Kuhn's 5-10-25 Cent Store

Franklin's Largest Variety Store

Franklin, Kentucky

Draper and Darwin

Franklin, Kentucky

National Stores

Franklin, Kentucky

Hunt Ford Co.

Ford Dealer

Franklin, Kentucky

Compliments of
Dr. Byron H. Rogers

Chiropractor

Franklin, Kentucky

Franklin Lumber Co.

JU 6-4431

Your Lumber Number

Franklin, Kentucky

Red Devil Butane Gas

Franklin, Kentucky

Frank Shannon

Watches—Diamonds

Franklin, Kentucky

BOWLING GREEN COLLEGE OF COMMERCE

Bowling Green, Kentucky

"A Pioneer Institution for Education for Business"

Bachelor of Science in Commerce—Four Years

Major Fields: Accounting, Finance, General Business Management, Marketing,
Secretarial Administration

Bachelor of Arts in Commercial Education—Four Years

Associate in Commercial Arts—Two Years

Major Fields: Accounting, Secretarial Administration

Certificate in Secretarial Science—One Year

A Four-Year Non-Profit Institution for Higher Education

*New students should address inquiries to
Director of Admissions*

Harold Hester Motor Co.

Better Quality Used Cars
Highway 109 South
Portland, Tennessee

Compliments of

Planters Loose Leaf Floor

Franklin, Kentucky

C. B. Culbreath

Purina Feeds and Groceries
Portland, Tennessee
Phone 325-2444

Wilbur's Roller Rink

Phone 325-3186
Parties \$10.00
Portland, Tennessee

J. B. Donoho and Sons

Phone 325-2427
Portland, Tennessee

Charles M. Deasy

General Insurance
Phone 325-3884 or 325-3959
Portland, Tennessee

Patton's Nursery

Phone 325-2448
Portland, Tennessee

Briley & Turner Insurance

Auto—Life—Fire
Phone 325-3930
Main Street
Portland, Tennessee

**KEMP OFFICE
EQUIPMENT CO.**

219 Public Square

Carthage
Tennessee



Shannon Insurance Agency

ARE YOU PROTECTED?

Insurance—Real Estate

Phones 325-3754

Night 325-3905 or 325-2414

Portland, Tennessee

**PORTLAND
HARDWARE CO.**

*"A Member of Consolidated
Hardware Buying Group"*

Portland, Tennessee

ARROW PRINTERS

SUMNER COUNTY LEADER

Portland, Tennessee

**Flanigan's
Radio-TV Service**

Buntin Road
Portland, Tennessee

Compliments of
**L & W Dollar Store
and Lunch Counter**

Phone 325-9927 Portland, Tennessee

Compliments of
Williams Jewelers

Phone 325-3944
Portland, Tennessee

Shell City Cafe

Highway 109 South
Portland, Tennessee

Compliments of
Flower Basket

Portland, Tennessee

**Ed - Mac's
Sport Center**

115 South Water Avenue
Gallatin, Tennessee

APPLIANCE AND ELECTRIC CO.

G. E. Televisions and Appliances

R. C. A. Color T. V.

Highway 109 North

Phone 325-3931



Portland, Tennessee

ECONOMY SUPPLY COMPANY

Phone 325-3777

Portland, Tennessee

Meador and Crafton Car Lot

Portland, Tennessee

Phone 325-2117

Roney Plumbing & Electric Co.

Phone 325-3437

Portland, Tennessee

J. E. KERLEY AND SONS

Phone 325-2051

PORTLAND
TENNESSEE



Compliments of
SANDYE SHIRT CO.

Portland, Tennessee

Compliments of
A FRIEND

Compliments of
**SARAH'S FLOWER
AND GIFT SHOP**

Portland, Tennessee

You can always do better with

MORTON'S
SHOP WITH CONFIDENCE
WEAR WITH PRIDE

Stores located in
Portland, Hartsville, Lafayette, Tennessee
and Scottsville, Kentucky

Compliments of
W. T. HARDISON

Portland, Tennessee

Compliments of
**PORTLAND
PLANING MILL**

Portland, Tennessee

**ELLIOTT'S
BUILDERS SUPPLY**

Phone 325-2808

Portland, Tennessee

**HODGES
EXCAVATING CO.**

Licensed Contractor

Phone 325-2407 or 325-3980

Portland, Tennessee

Parks Realty Company

Gallatin, Tennessee

Katherine's Dress Shop

Skirts — Blouses — Dresses
Sportswear — Lingerie
452-3753
Gallatin, Tennessee

Wade Motor Company

Your Friendly Ford Dealer
Gallatin, Tennessee

Lyles and Rippy

General Insurance
East Side Public Square
Gallatin, Tennessee

Ferrell Auto Supply

Goodrich—Texaco Products
242 West Main Street
Phone 452-2371 or 2372
Gallatin, Tennessee

PENNEY'S

Gallatin, Tennessee

Compliments of

American Legion

POST #75

Congratulations, Seniors

Bentley's Five and Ten

Portland, Tennessee

GET THE BEST

GET SEALTEST



W. A. HADEN

Distributor

Compliments of
Upper Sumner Press

Russell Street
Portland, Tennessee

Gallatin Bowling Center

Phone 452-4738

Gallatin

Tennessee

Compliments of

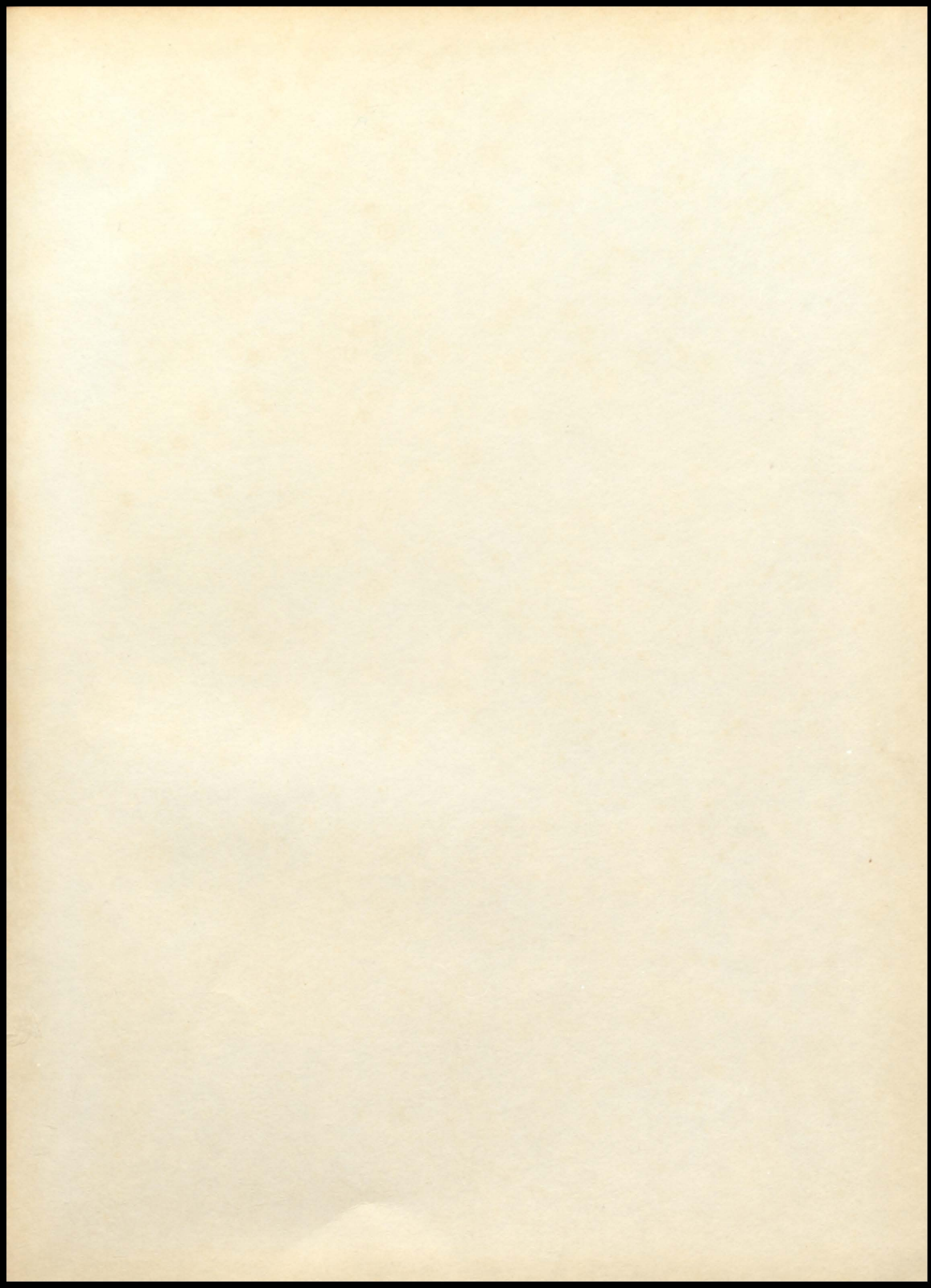
STATE LINE GULF SERVICE	FRANKLIN, KENTUCKY
MURLEY ESSO STATION	GALLATIN, TENNESSEE
SONNY'S MARKET	PORTLAND, TENNESSEE
GARROTT BROS. CONTINUOUS MIX	GALLATIN, TENNESSEE
WM. CLINE AND SON GROCERY	PORTLAND, TENNESSEE
SPEARS MACHINE CO.	FRANKLIN, KENTUCKY
FRANKLIN SHELL SERVICE	FRANKLIN, KENTUCKY
BROWN'S BARBER SHOP	FRANKLIN, KENTUCKY
MONT JACKSON	FRANKLIN, KENTUCKY
HOLIDAY GULF	FRANKLIN, KENTUCKY
FRANKLIN SPORTING GOODS	FRANKLIN, KENTUCKY
GROVES TEXACO	FRANKLIN, KENTUCKY
HUDSON FARM SERVICE	FRANKLIN, KENTUCKY

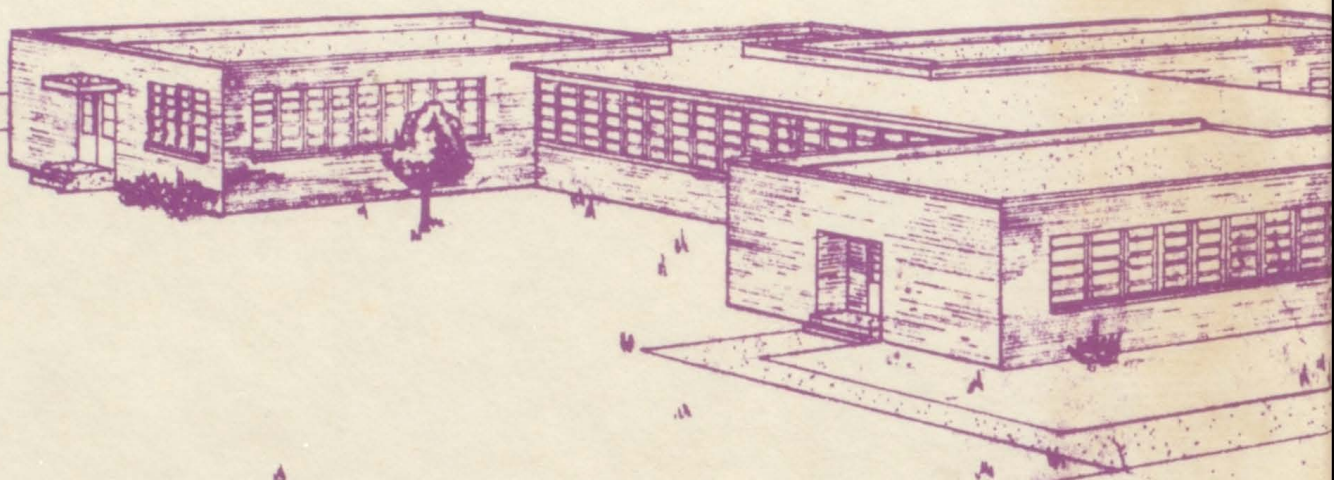
COMPLIMENTS OF A FRIEND

Western Auto Store

Phone 325-3939

Portland, Tennessee





12

