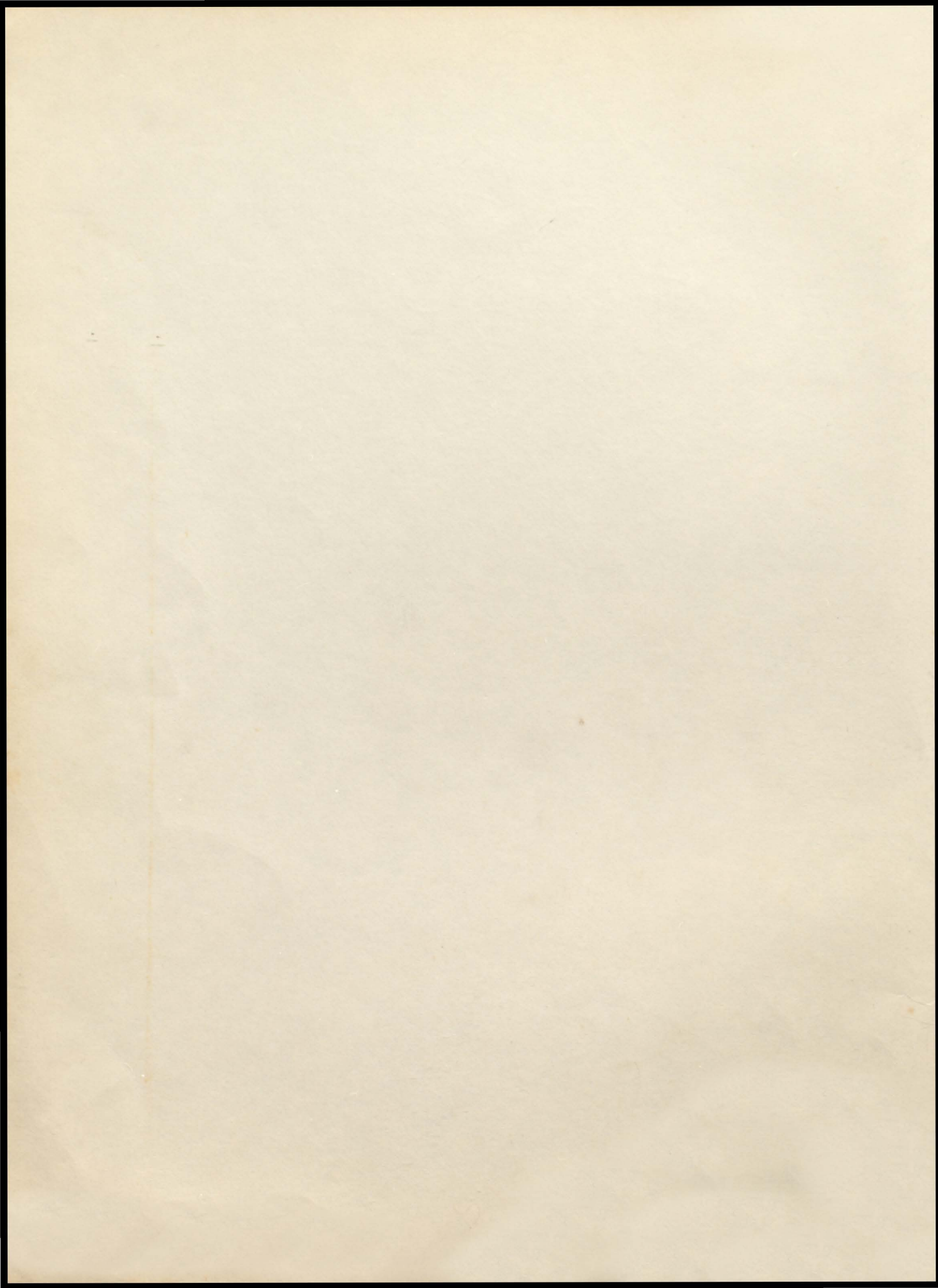


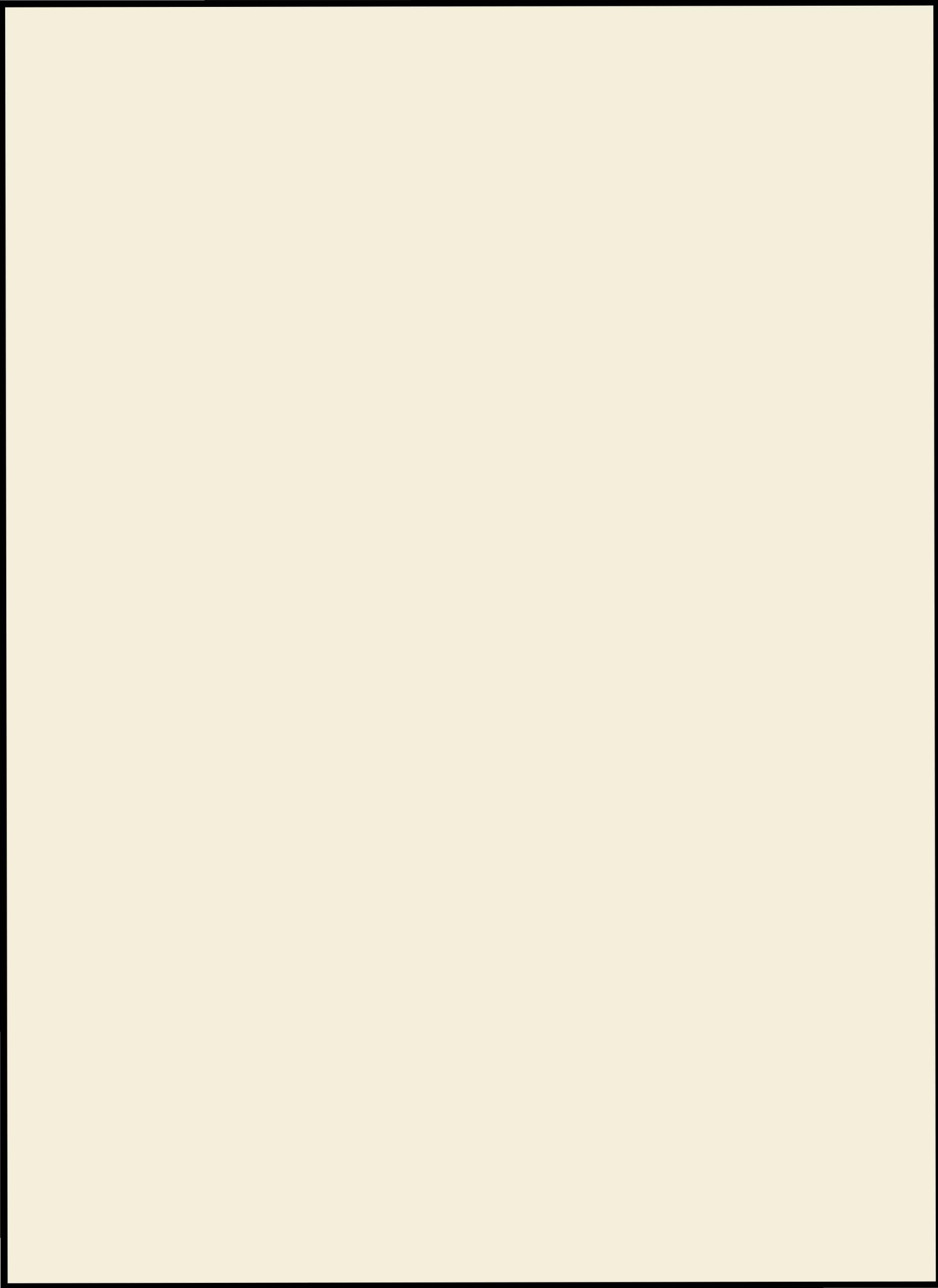
19 PANTHER 50

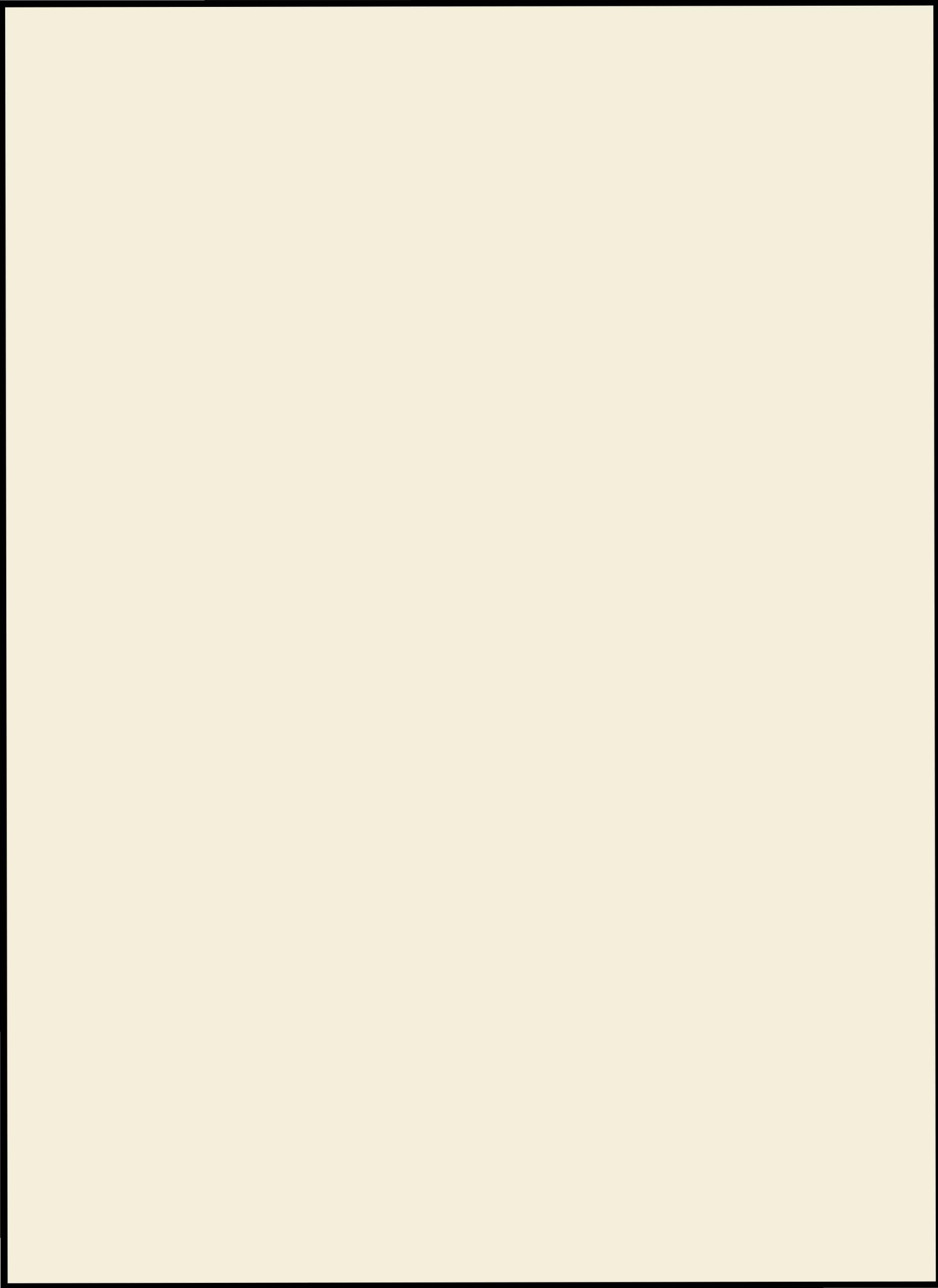


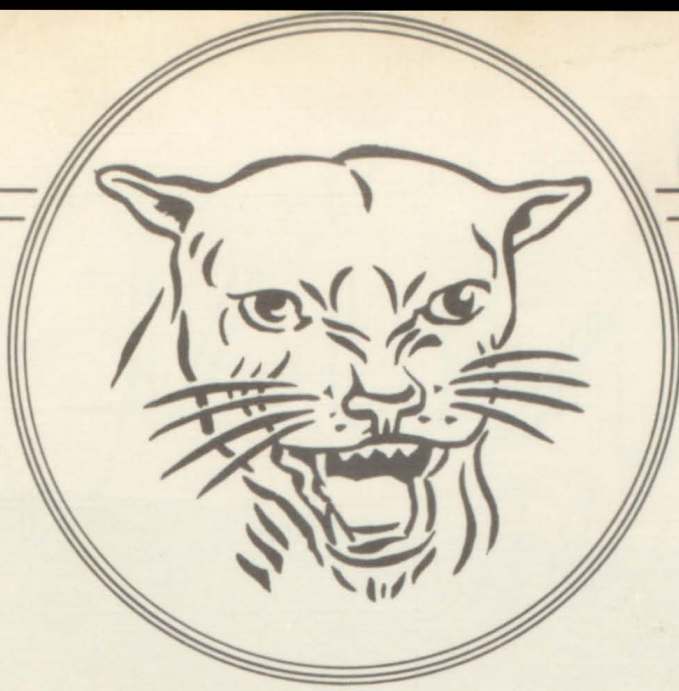












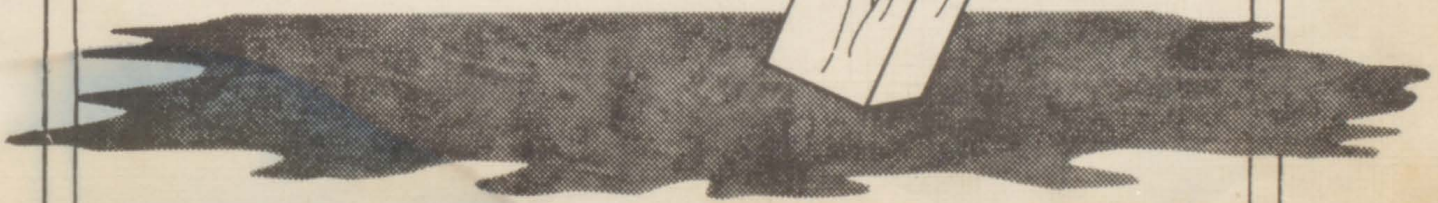
Clyde Woodall

the

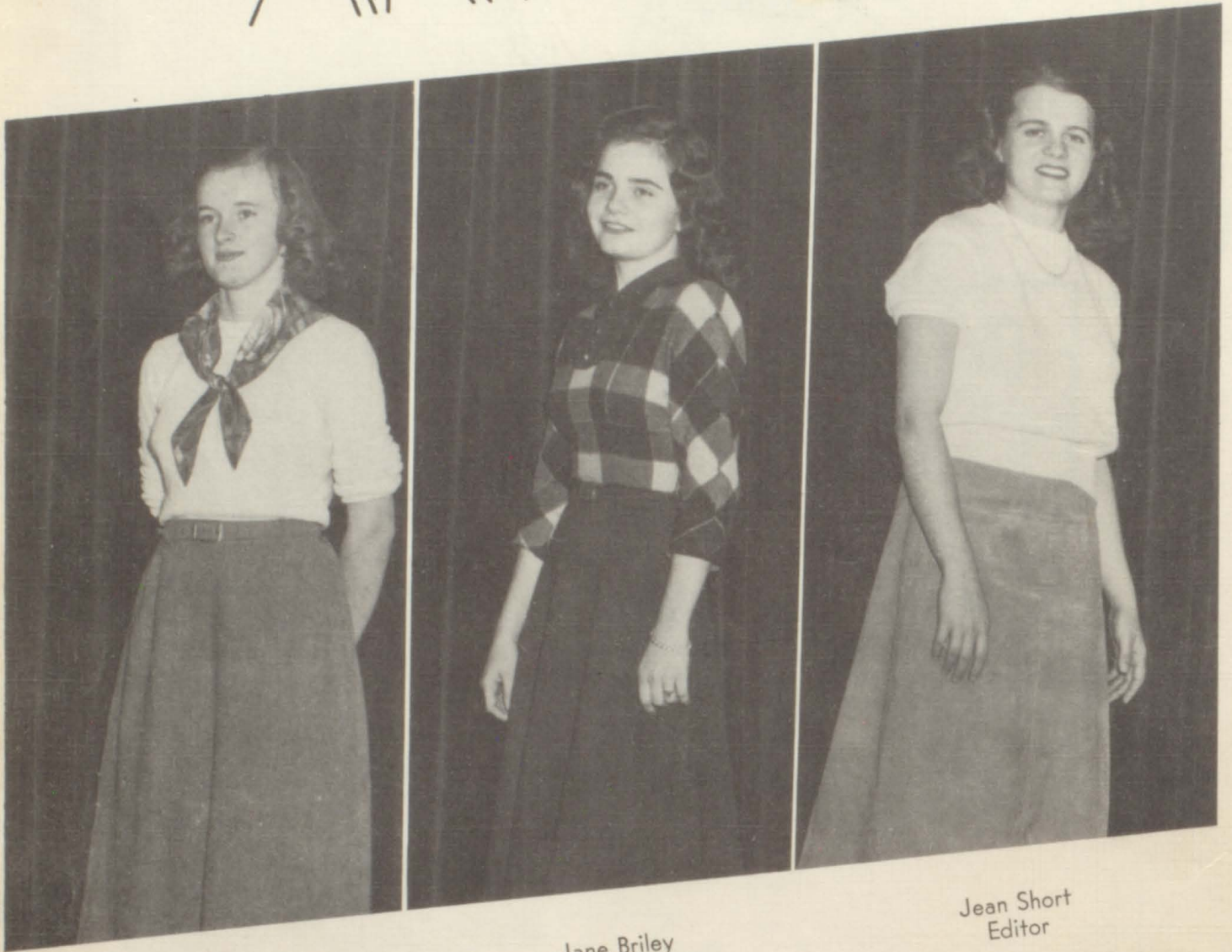
PANTHER

1950

Published by
BETA CLUB
OF
SUMNER COUNTY HIGH SCHOOL



ANNUAL



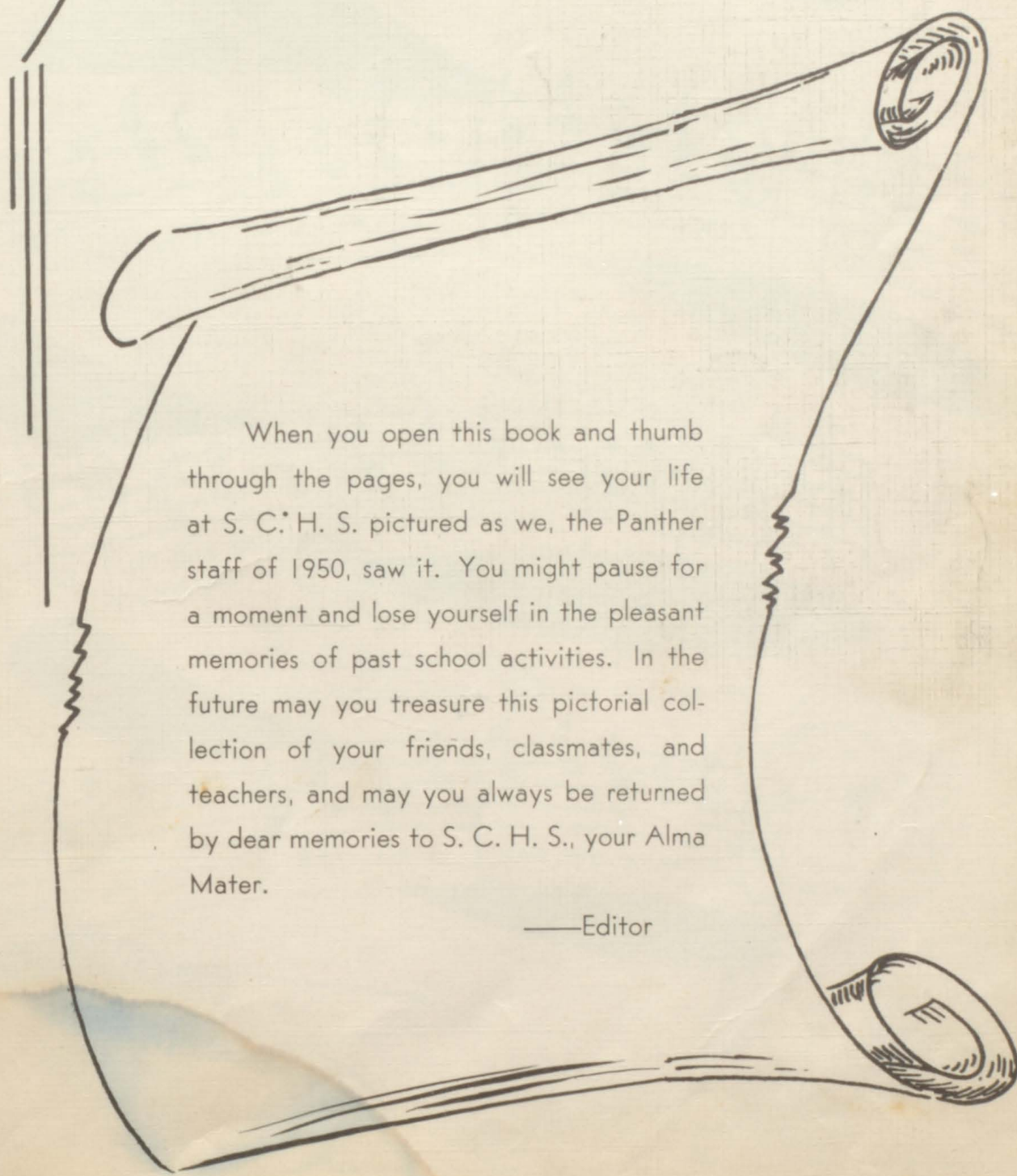
Jane Dye
Business Mgr.

Jane Briley
Assistant Editor

Jean Short
Editor

STAFF

Foreword



When you open this book and thumb through the pages, you will see your life at S. C. H. S. pictured as we, the Panther staff of 1950, saw it. You might pause for a moment and lose yourself in the pleasant memories of past school activities. In the future may you treasure this pictorial collection of your friends, classmates, and teachers, and may you always be returned by dear memories to S. C. H. S., your Alma Mater.

—Editor

The ALMA MATER

ON OLD PORT-LAND'S EAST-ERN BOR-DER

REARED A-GAINST THE SKY, PROUD-LY STANDS OUR AL-MA MA-TER, AS THE YEARS GO BY.

FOR-WARD, EVER BE OUR WATCH-WORD, CON-QUER AND PRE-VAIL.

HAIL TO THEE, OUR AL-MA MA-TER, COUN-TY HIGH, ALL HAIL!



DEDICATION

Herbert Gregory, A. B.
Mathematics

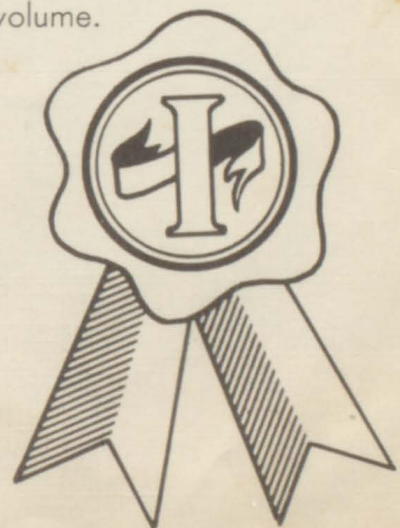
Western Ky. State Teachers
College
Sponsor of Sophomore Class

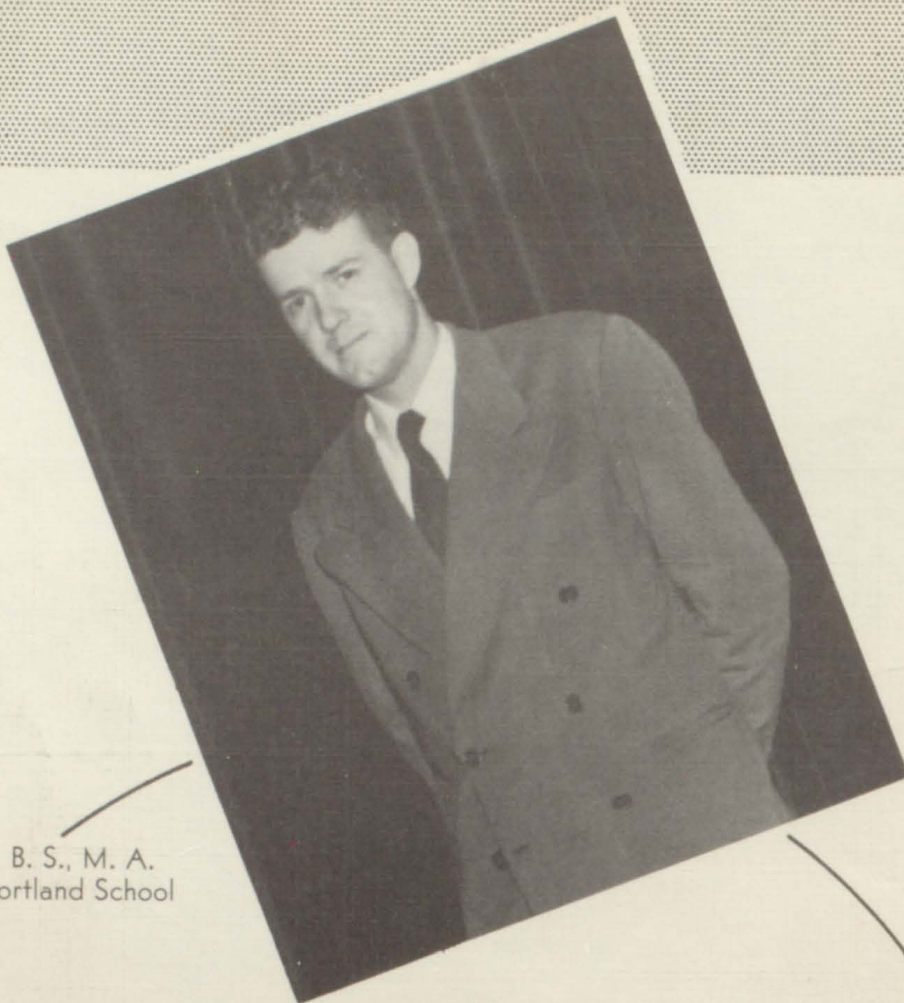
To one whose shining character and tireless services for others have brought an inspiration to all.

To one whose thoughts and actions have enriched the lives of those who have known him.

To one whose noble qualities are known least of all to himself.

We the Senior Class of 1950 do with sincere appreciation dedicate this volume.





William M. Hunter, B. S., M. A.
Supervisor of the Portland School

We, the student body, take advantage of this opportunity to express our gratitude to Mr. Hunter for performing his duty as principal of our school in the competent and inspiring manner that has always been evident on his part.

Largely due to his efforts, our beloved Alma Mater has advanced steadily in the last three years and we wish to make it known that we realize and appreciate this fact.

He has made himself our friend and advisor, rather than merely a man who is our superior officer. We feel that if he set out in the beginning to win the respect and admiration of the student body, the faculty, and all those who associate with him, he has succeeded beyond the shadow of a doubt.



Lawrence Bradley, B. S.
Science
Middle Tenn. State
College
David Lipscomb
Junior Sponsor



Mrs. Wilbern Dorris,
B. S.
Home Economics
University of Tennessee
Junior Sponsor
F. H. A. Sponsor



Wilbern Dorris, B. S.
Agriculture
University of Tennessee
F. F. A. Sponsor



Mrs. Duncan Empson,
Librarian
A. B.
Western Ky. State
College
Tennessee College
Senior Sponsor



Mrs. W. T. Hardison
Dramatics
Cumberland University
N. F. L. Sponsor
Debate Sponsor
Pep Squad Sponsor



Florence Hunnicutt,
A. B., M. A.
English
Western Ky. State
College
University of Kentucky
Beta Club Sponsor
Yearbook Sponsor



Mrs. William Hunter,
B. S.
Commercial
Peabody College
Tenn. Polytechnic Inst.
"Purple Herald" Sponsor
Sophomore Sponsor



Mrs. Earl Jernigan,
B. S.
Social Science—Spanish
Physical Education
Middle Tenn. State
College
Senior Sponsor



Mrs. A. W. Mischnick,
B. S.
English
Social Science—History
Okla. East Central
College
Freshman Sponsor



Douglas McDonald, B. S.
Coach
Tenn. Polytechnic Inst.
Sponsor of Letter Club



Mrs. O. M. Moore, A. B.
Languages
Mathematics
Wesleyan College
Freshman Sponsor

HONOR ROLL

for
MID-TERM

Wanda Kirkham	97.75
Yvonne Cummings	97.50
Alberta Street	97.25
Jane Briley	96.25
Charlie Jones	96.25
Joyce Jones	96.25
Mary Jo Perdue	96.25
Laura Ruth Claiborne	96.00
Billie Frances Petty	96.00
Jean Short	96.00
Nadine Claiborne	95.75
Joe Graber	95.75
Thelma Wakefield	95.75
Joyce Woodard	95.50
Jerry Stevenson	95.50
Betty Dye	95.25
Peggy Franklin	94.75
Doris Brown	94.00
Bonnie Jo Ashlock	94.00
Margaret Schablik	94.00
Rebecca Trammell	94.00
Evelyn Legge	93.75
Jane Dye	93.50
Frank Wilkes	93.50

Clyde Riggs	93.25
Elsie Shirrell	93.25
Robert Brown	93.00
Claude Hardin	93.00
Earl Knowles	93.00
Edna McCormack	93.00
Christine Hunnicutt	92.75
Carey Lanier	92.75
Josephine Scott	92.75
Juanita Wallace	92.75
Noel Lane	92.25
Mary Callis	92.00
Eurie Jean Jenkins	91.75
Ernestine Trammell	91.75
Mary Ellen Williams	91.50
Dot Denning	91.25
Marie Harper	91.25
Sonny Pond	91.25
Frank Empson	91.00
Pattie Stinson	91.00
Betty Civils	90.75
Jordan Hunter	90.75
Wayne Kelly	90.75
Jimmy Johnson	90.75
Juanita Street	90.75
Wanda Wallace	90.75
Goldie Woodall	90.75
Joanne Callis	90.50
Mary Frances Jones	90.50
Rebecca Anglea	90.25
Joe Brown	90.25
Sue Dobbs	90.25
Mildred McDougal	90.25
Harold Denning	90.00
Rebecca Hurt	90.00
Jean Mayes	90.00
Evelyn Prescott	90.00
Betty West	90.00



Seniors



MOST OUTSTANDING
 Claude Hardin
 Jean Short



Maxine Keye Bobby Wilkinson Claude Hardin Jean Short
 Secretary Vice-President President Treasurer

CLASS OFFICERS



REBECCA A. ANGLEA

Dramatic
Commercial

N.F.L. 1, 2, 3, 4; President 4; Thespian 3, 4; Paper Staff 4; Director of Jr. Play; F.H.A. 2; Commercial Club 4.

BETTY J. ARNETTE

X-otic
Commercial

N.F.L. 1, 2, 3, 4; Thespian 3, 4; Language Club 3; Paper Staff 3; Pep Squad 1; Music Contest 1, 2; Basketball 1, 2, 3, 4; Letter Club 4; Glee Club 1.

BONNIE JO ASHLOCK

Neat

Commercial

Home Ec. Club 2, 3, 4; Vice-Pres. 4; Delegate to State Home-makers Convention 4; Commercial Club 3, 4; Paper Staff 4; Glee Club 1, 2.

VIRGINIA MOORE BANDY

Efficient

Home Economics

Commercial Club 3; Victory Corps 1; Home Ec. Club 1, 2, 3, 4; Glee Club 1, 2, 3, 4.



TRUMAN BREWER

Faithful

Mathematics

F.F.A. 1, 2, 3, 4; Football 2.

BETTY JO BROWN

Beguiling
English

N.F.L. 1, 2, 3, 4; Thespian 1, 2; Treasurer 4; Home Ec. Club 1, 2, 3, 4; Jr. Play 3; Cheerleader 3, 4; Pep Squad 1, 2.



CONWAY BROWN

Witty

Agriculture

Glee Club 4; F.F.A. 1, 3, 4; Commercial 3; Paper Staff 3.

DOT BROWN

Sincere

Languages

N.F.L. 1, 2, 3, 4; Band 1; Thespian 2, 3, 4; Victory Corps 1; Commercial Club 3; Science Club 4; Glee Club 4.



MARJORIE BROWN

Cheerful
Commercial

Glee Club 1, 4; F.H.A. 2, 3; Commercial Club 3, 4;
Paper Staff 3, 4.

BETTY CIVILS

Kind
Mathematics

F.H.A. 2, 3; Glee Club 1, 2, 3, 4; Music Contest
3, 4.



CATHERINE CLUBBS

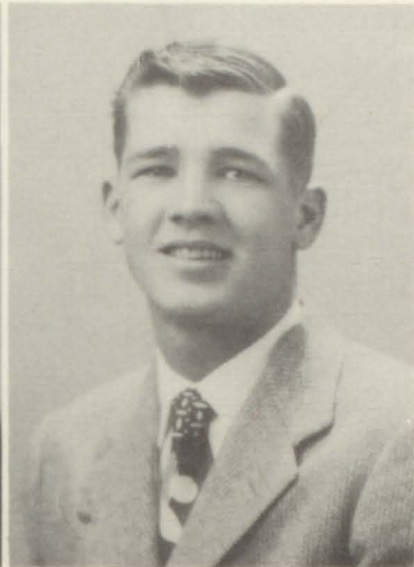
Youthful
Language

Glee Club 4; Language Club 4.

JOE DEVASHER

Handsome
Social Science

Football 3, 4, 5; Letter Club 5; Glee Club 5; Pep
Squad 2; Basketball 3; All Conference Football 3,
4; Honorable Mention All-Mid State 3, 4; 3rd
Team All-Mid State 5; Honorable Mention All-
State 5; F.F.A. 1, 2, 3.



ROBERT E. GARRETT

Dependable
Mathematics

Vice-Pres. of Class 3; Letter Club 4; F.F.A. 4;
Science Club 2, 4; Basketball 3, 4; Football 2, 3, 4.

MARGARET GREGORY

Agreeable
Commercial

Paper Staff 4; F.H.A. 2; Glee Club 1, 2, 3, 4.



CLAUDE HARDIN

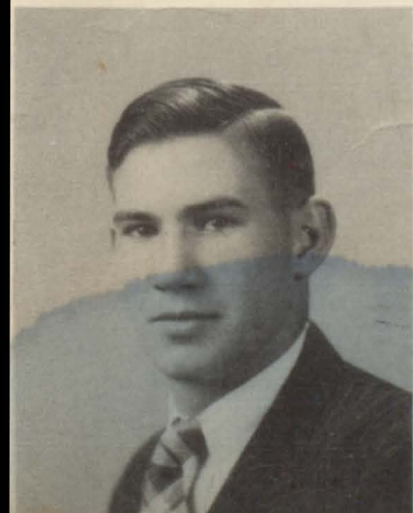
Bachelor of Ugliness
Mathematics

Vice-Pres. of Class 2; President 4; Pres. of Letter
Club 4; Boys State 3; F.F.A. Vice-Pres. 1; Football
2, 3, 4; Pep Squad 1; Glee Club 4; Most Out-
standing 4.

MARIE HARPER

Jolly
Commercial

Commercial Club 4; Paper Staff 4; Basketball 1, 2,
4; Home Ec. Club 2.





WILLIAM HARPER

Patient

Agriculture

F.F.A. 1, 2, 3, 4; Football 2, 3, 4; Letter Club 4; Honorable Mention All-Mid State 4.

LESLIE HARRIS

Executive

Social Studies

Debate 3, 4; Football 3, 4; Honorable Mention for All-Mid State 4; Most Valuable Player 4; Extemp. Speaker 2; F.F.A. Pres. 4; Letter Club 4; N.F.L. 1, 2, 3, 4; F.F.A. 1, 2, 3, 4; Jr. Play

WILLARD HOB DY

Most Studious

Mathematics

F.F.A. 1; Football 1, 2.

WILMA HODGES

Inquisitive

Social Science

F.H.A. 2, 3; Commercial 3, 4; Basketball 4.



CHRISTINE HUNNICUTT

Sophisticated

Science

N.F.L. 2, 3, 4; Thespian 3, 4; Beta Club 4; F.H.A. 1, 2; Commercial Club 3, 4; Jr. Play; Pep Squad 1; Paper Staff 4; Music Club 2, 3; Glee Club 1, 4.

BETTY HUNTER

Most Popular

Home Economics

Band 1; Cheerleader 2, 4; Glee Club 3, 4; N.F.L. 1, 2, 3, 4; Vice-Pres. 4; Language Club 4; Vice-Pres. 4; Thespian 3, 4; Commercial Club 3; Paper Staff 3; Year Book Staff 4; Music Contest 3; Basketball 1, 2, 3, 4; Co-Captain 4; Vice-Pres. Glee Club 3; Home Ec. Club Sec. 3, 4; Letter Club 4; Beta Club 4; Music Club 3; Miss S. C. H. S. 4; Honorable Mention of All Tournament Basketball Team 2.



EARL D. HUNTER

Best Sport

Mathematics

Letter Club 4; F.F.A. 1; Pep Squad 1; Football 2, 3, 4.

JOYCE JONES

Winsome

Languages

Class Secretary 2; N.F.L. 1, 2, 3; Vice-Pres. 3; Beta Club 2, 3, 4; President 4; Commercial Club 3, 4; Vice-Pres. 3; F.H.A. President 4; Thespian 2, 3; Paper Staff 2, 3; Yearbook Staff 2, 3, 4; Language Club 4; Class Prophet 4; Most Representative Sophomore Girl 2.



MARY FRANCES JONES

Refined
Social Science

Class Sec 3; Music Club 1, 2, 3; Commercial Club 3; Home Ec. Club 4; Band 1; Music Contest 2, 3; Football Queen Attendant 3; Language Club 4.

MAXINE KEYE

Graceful
Commercial

Football Queen 4; Class Secretary 4; Treasurer 2; Sec. of N.F.L. 3, 4; F.H.A. 1, 2, 3; N.F.L. 1, 2, 3, 4; Thespian 3, 4; Paper Staff 3, 4; Publication Manager 4; F.H.A. Nominee for State Vice-President.



EARL KNOWLES

Ambitious
Social Science

Football Manager 3, 4; F.F.A. 1, 3; Letter Club 4; Class History 4.

MARY ANN LAMBERT

Cute
Commercial

F.H.A. 1, 2, 3; F.H.A. Treasurer 3; Commercial Club 3, 4; Pep Squad 1; Attendant to F.H.A. Queen 3; Paper Staff 4; Glee Club 4.

HOWARD LANE

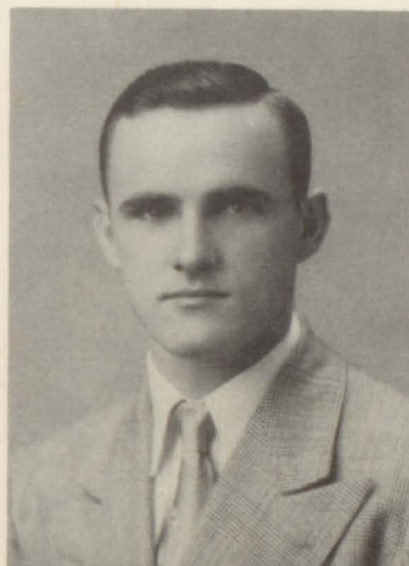
Mischievous
Social Sciences

Class Pres. 2; Letter Club Vice Pres. 4; F.F.A. 1, 2; Basketball Manager 4; Football 2, 3, 4; Alt. Captain 4; Glee Club 4.

JEAN LINK

Best Natured
History

Paper Staff 4; Home Ec. 2, 3, 4; Glee Club 1, 2, 3, 4.



JIMMIE MARTIN

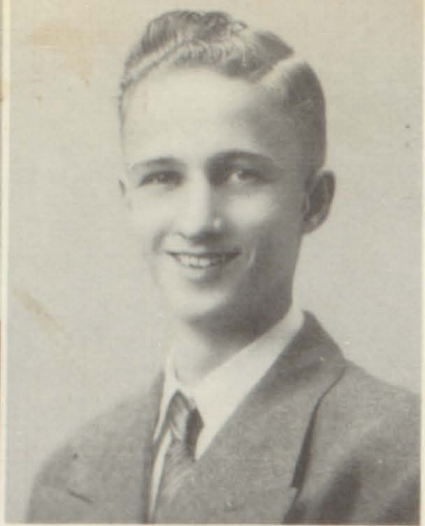
Frank
Mathematics

F.F.A. 1, 2, 4; Football 2, 3.

MILDRED McDOUGAL

Original
Home Ec.

Glee Club 1, 4; Commercial Club 3, 4; N.F.L. 1, 2, 3, 4; Thespian 3, 4; F.H.A. 2, 3; Jr. Play; Paper Staff 3, 4.



DOROTHY MEE

Quiet

Commercial

F.H.A. 2, 3, 4; Glee Club 2, 3, 4; Victory Corp 1.

JACKIE MYERS

Alert

Agriculture

F.F.A. 2, 3, 4.

EVELYN PRESCOTT

Friendly

Commercial

Commercial Club 3, 4; F.H.A. 1, 2, 3; Vice-Pres. 3; Glee Club 1, 2, 4; Paper Staff 3, 4; Pep Squad 1, 2, 3, 4; N.F.L. 1.

JOSEPHINE SCOTT

Conscientious

Commercial

F.H.A. Club 2, 3, 4; Commercial Club 3, 4; Paper Staff 4; Glee Club 1, 2.



ELSIE SHIRRELL

Talkative

English

Home Ec. Club 3, 4; Reporter 4; Commercial Club 3, 4; Paper Staff 4.

JEAN POND SHORT

Intelligent

Mathematics

Beta Club 2, 3, 4; Glee Club 1, 4; N.F.L. 1, 2, 3, 4; Thespian 2, 3, 4; Thespian Pres. 2, 3, 4; Commercial Club 3; Paper Staff 2, 3, 4; Editor of Paper 4; Yearbook Staff 2, 3, 4; Yearbook Editor 3, 4; All-state play cast 1; Pep Squad 1; Cheerleader 2, 3, 4; Capt. 3, 4; Miss Freshman 1; Most Representative 3, 4; D.A.R. Rep. 4; Basketball 1, 2, 3, 4; Basketball Captain 4; Class Treasurer 4; Keyboard Club 2; Music Medal 1; Letter Club 4; Valedictorian.



JERRY STEVENSON

Zealous

Mathematics

Class President 2; Vice-Pres. 1; F.F.A. 1; Secretary F.F.A. 1; Most Representative Sophomore; Band 1; Jr. Play; Class Testator 4.

JOE STEWART

Unusual

Social Science

F.F.A. 1, 3; F.F.A. Reporter 1; Glee Club 4.



WOODROE STORY

Happy-go-lucky
Social Science

ERNESTINE TRAMMELL

Energetic
Mathematics

Glee Club 2, 3, 4; Paper Staff 3, 4; Pep Squad 1;
Music Contest 2, 3; Commercial Club 3, 4; Language Club 4; Class Poet 4.



REBECCA TRAMMELL

Versatile
Commercial

Beta Club 2, 3, 4; Vice-Pres. 4; N.F.L. 2, 3, 4; Thespian 3, 4; Vice-Pres. 4; Language Club 4; Glee Club 4; Commercial Club 3, 4; Paper Staff 2, 3, 4; Yearbook Staff 2, 3, 4; Pep Squad 1, Victory Corps 1; Jr. Play; Attendant to Football Queen 2; Salutatorian 4.

BETTY WEST

Most Athletic
Language

Pep Squad 1; N.F.L. 1, 2; Band 1; Commercial Club 3; Basketball 1, 2, 3, 4; Letter Club 4; Sec. 4; Language Club 4; Reporter; Beta Club 4; Glee Club 4; Yearbook Staff 4; F.H.A. 4; Assistant Editor of Purple Herald Staff 4.



TALMADGE WHITSON

Lazy
Mathematics

F.F.A. 1; Pep Squad 1.

BOBBY WILKINSON

Likable
Mathematics

Class Pres. 3; Class Vice-Pres. 4; Letter Club 4; Outstanding 3; F.F.A. Sec. 1; Jr. Play; Band 1, 2; Pep Squad 1; Glee Club 4; Football 2, 3, 4.



BILLY WILLIAMS

Courteous
Mathematics

Class Treasurer 3; F.F.A. 1; F.F.A. Sec. 1; Letter Club 4; Science Club 4; Basketball 1, 3; Football 2, 3, 4.

BOBBY WILSON

Talented
Mathematics

Class Pres. 1; Thespian 3, 4; N.F.L. 1, 2, 3, 4; Letter Club 4; N.F.L. Speaking contest at Lebanon 3; Jr. Play; Band 1; Pep Squad 1; Glee Club 4; Basketball 1, 2, 3, 4; Captain 4; F.F.A. Pres. 1.



CLASS HISTORY

In August, 1946, summer vacation ended for eighty-three students, who were initiated as green freshmen into Sumner County High School. Some of us were pleased to begin the long grind of high school; others hated to start.

The next year only sixty of the original number returned. The others dropped out for various reasons, mostly because it was the line of least resistance. We were under the direction of our present principal, Mr. William Hunter.

The Junior year found us well established and at home here at S. C. H. S. We made it over the half-way mark in fair style. At the close of the school year we made a pleasant trip with the Seniors to Mammoth Cave.

After many hard, but for the most part happy months, we entered our last year of high school. Since 1946 we have lost many members of the class, but a few from other schools have joined us. Only forty-six remain to graduate.

Our class presidents for the four years have been Bobby Wilson, Jerry Stevenson, Bobby Wilkinson, and Claude Hardin. In sports we placed our share of players on the football team, as well as contributed to the basketball teams. Quite a few of our football players received Conference and Mid-State honors. This final year Leslie Harris was voted most valuable football player; Bobby Wilson was elected captain of the boys basketball team. Jean Short is captain of the girls basketball team and Maxine Key received honors as Football Queen. The Valedictorian is Jean Short and the Salutatorian is Rebecca Trammell. Jean Short is also our D. A. R. Representative. The class has taken part in all school activities and had members in most clubs.

As the final weeks slip by, we rather hate to leave S. C. H. S. To us it is the most wonderful school on earth and we shall remember our days here as some of the happiest of our lives.

Earl Knowles

COMMENCEMENT GLOW

We come down to the sunset's glow
As light is fading from our day —
A day of joys, and thrills, and tears,
A day we cannot ask to stay.

Dawn found us eager and alert,
Fresh with the faith, and hope of youth,
Trusting the ones who led our feet
In paths that show the way to truth.

Ah, changes rare are wrought by time!
Mid-morning showed us to be wise
To all the sounds that filled our ears,
To all the sight that fed our eyes.

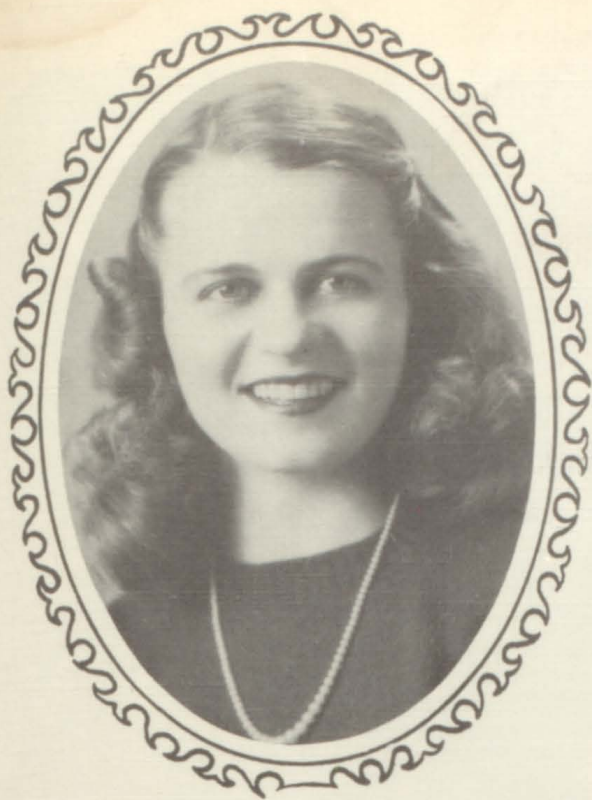
And as our cloudless day wore on,
The brightness of the noon day sun
Assured us that, if we'd hold fast
Our faith, our goal would soon be won.

Then joined in bonds of friendship true,
We sped the afternoon along,
Gathering the harvest of the day —
A happy blend of toil and song.

That day is gone; tomorrow's sun
Will usher in another dawn.
Our faces yearn to meet the light
That takes the place of one that's gone.

We carry on from that fair day
The glow its sunset now imparts —
A radiant glow of light and warmth
Sealed forever in our hearts.

Ernestine Trammell



Jean Short
Valedictorian
D. A. R. Representative

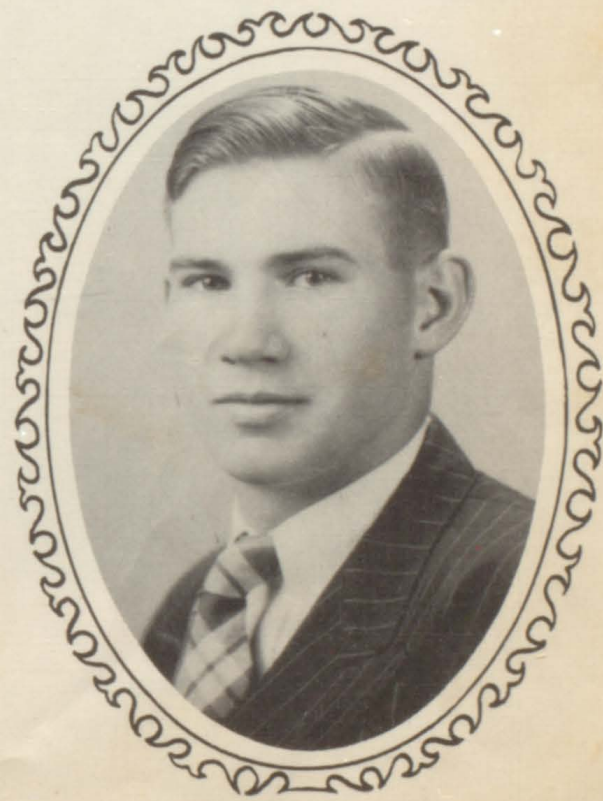


Rebecca Trammell
Salutatorian

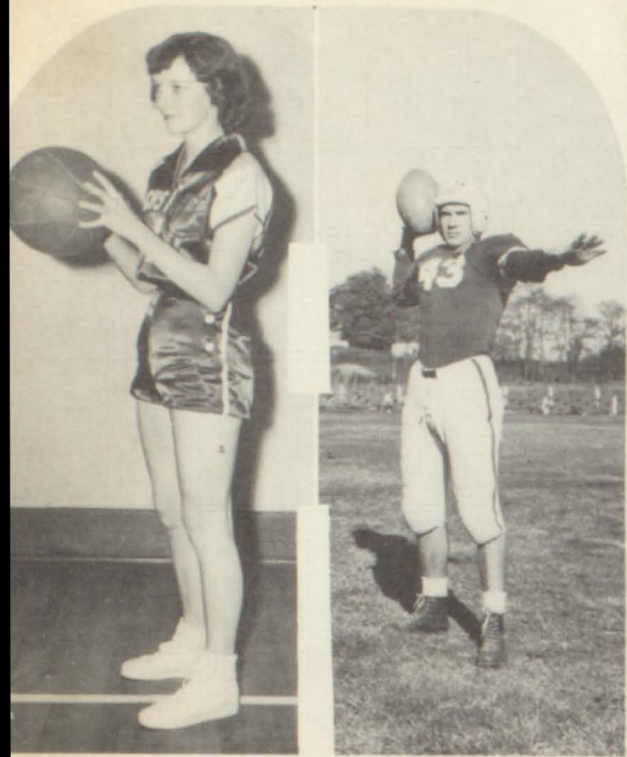
Who's Who



Betty Hunter
Miss S. C. H. S.



Claude Hardin
Bachelor of Ugliness



Athletic
Betty West, Claude Hardin



Beguiling
Betty Brown



Cute
Mary Anne Lamberth



Dramatic
Rebecca Anglea



Jolly
Marie Harper



Kind
Betty Civils



Lazy
Talmadge Whitson



Mischievous
Howard Lane



Energetic
Ernestine Trammell



Friendly
Evelyn Prescott



Graceful
Maxine Keye



Handsome
Joe DeVasher



Intelligent
Jean Short



Neat
Bonnie Jo Ashlock



Original
Mildred McDougal



Popular
Betty Hunter



Quiet
Dorothy Mee



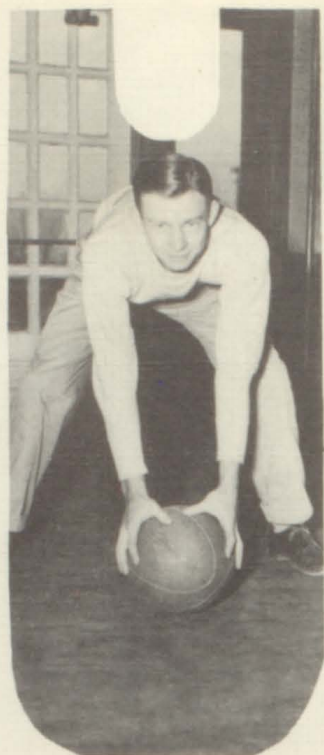
Refined
Mary Frances
Jones



Sophisticated
Christine Hunnicutt



Talkative
Elsie Shirrell



Unusual
Joe Stewart



Versatile
Rebecca Trammell



Winsome
Joyce Jones



X-otic
Betty Arnette



Youthful
Catherine Clubbs



Zealous
Jerry Stevenson

CLASS PROPHECY

What does the future hold for us, the graduating class of 1950? Some of us think we know; others do not have the slightest idea what is in store. Perhaps there is a way in which we can see ourselves as we will appear several years from now. Let us now look into the future. As we gaze into the magic crystal ball, we see that ten years have elapsed since we were seniors at Sumner County High School. Yes—1960—a year in which many marvelous things will happen. A scene is appearing in the crystal ball. We see a beautiful church; an organ is playing "I Love You Truly". In the chapel a wedding ceremony is being performed by the Reverend Conway Brown. We can't see who is being married, but it must be over now because here comes the attractive bride who is none other than Evelyn Prescott, and her handsome husband. If only we could be there to congratulate them! The scene is changing—a big city is coming into view—skyscrapers, bright lights, night clubs—"The Stork Club" where Betty Arnette holds the people spellbound with her version of a beautiful song. Among the celebrities there are Leslie Harris, who has just been awarded a sum of money for his prize-winning poem "Hail to Thee, Dear Tennessee"; Joseph Stewart, professor of English at Yale University; Bill Williams and Maxine Keye who have been chosen for the roles of "Romeo and Juliet" which will run in a modern version on Broadway this summer; and here come two very distinguished looking ladies to join the others. They are Mary Francis Jones, author of the popular book, "A Tree Grows in Portland," and Rebecca Anglea, dramatic coach at Duke University.

Next, a radio station appears. Jackie Myers, sports commentator, is now announcing that Joe DeVasher of U. C. L. A. has been named "Coach of the Year." Howard Lane, now playing pro-football received a minor injury today when he slipped down in the bathtub and bruised his elbow. Betty West is the newly elected captain of the Goldblumes. After the sports broadcast was a program of vocal stylings by Bob Wilson, "The Voice of the Air Waves."

Magic again presents some familiar places. There is our dear Alma Mater, S. C. H. S., and it looks as though we are going to be taken inside. In the office where Mr. Hunter used to sit is the new principal, Earl Knowles and his efficient secretary, Bonnie Jo Ashlock. In the library we see that Dot Brown has followed in the footsteps of her sister and become the present librarian, while Rebecca Trammell is teaching English now.

The scene is changing. . . . We see Betty Jo Brown surrounded by children. Are they hers? No, she is teaching a kindergarten class and there is a little girl that must be the daughter of Mrs. Bob Lane (the former

Marie Harper) because she is the exact image of her mother. A little farther down the street, we see a school run by Jean Short and Virginia Bandy for those interested in matrimony. It seems that we are being taken down to Main Street. Woodroe Story, editor of **The Portland Times**, seems to be a successful businessman; and look at that handsome sailor coming down the street—why, that's Ensign Claude Hardin. . . And who is that with him? That's Talmadge Whitson, who has just bought a machine that will do all his thinking for him. Let's look at some of these new places of business: Lamberth's Dime Store; Portland Cleaners, Bob Wilkinson, Prop.; Garrett and Hobdy, Attorneys at Law. Now we are being taken into Scottie's Beauty Shop, owned by Josephine Scott where Dorothy Mee is getting a shampoo. My! Listen to all that gabbing. Don't tell me that's Dorothy Mee doing all that talking! What a change! Let's take a look at the magazine Dorothy is looking at. There's Powers model Chris Hunnicutt on the cover. Inside, there is an article on "Elsie Shirrell, The Most Attractive Girl in Television." The next page displays latest designs created by hat designer, Mildred McDougal. The scene is moving a few miles in the country. Betty Hunter seems quite contented on her spacious farm.

Again the scene changes. . . . What is this we see now? Is it a circus? No, it's the Tennessee State Fair. First there is a display of all the fancy needlework. Why, look! Jean Link has won first prize on her exhibit. Next we see a painting by Betty Civils that won a blue ribbon. Next is the livestock barn where Truman Brewer, a successful farmer, has won several prizes on his thoroughbreds. The Governor of Tennessee, Jerry Stevenson, appears on the platform about to make a speech. With him are his secretary, Ernestine Trammell, and Marjorie Brown, the first woman senator from Tennessee, who has just introduced a bill in Congress giving everyone, regardless of age, the right to vote — The scene is moved over to the Midway. Why, there's the barker Jimmy Martin yelling something about the bearded lady (Margaret Gregory) and the Wild Woman of Borneo (Catherine Clubbs). "Peanuts, peanuts, please buy my fresh roasted peanuts!!!" yells William Harper as he pushes through the crowd. The Strong Man proves to be Earl D. Hunter; and look over there at the man on the flying trapeze. It's Blonnie Briley! The partner in his act is Wilma Hodges. A glaring sign announces "Have your fortune told by. . . ." No, it can't be!!! But it is — ME of all people! Oh, well, who knows????

— Joyce Jones

Last Will And Testament Of The Senior Class

We, the Senior Class of 1950, being of strong body and weak mind, in the presence of witnesses and with the advice of competent lawyers, do hereby compose and declare this document to be our last will and testament. (We hope!)

To Mr. Hunter, our principal, and to the faculty, we leave a large quantity of headache tablets, which they can certainly use after four years with us.

To our co-sponsors, Mrs. Empson and Mrs. Jernigan, we would like to show our gratitude and appreciation for their helpfulness and guidance during this our last year at the old Alma Mater.

To the juniors, we leave our position of honor as seniors of S. C. H. S.

To the sophomores, we leave the responsibility of guiding the freshmen of 1951 to a better start. Here's hoping you will set a good example for the tender creatures!

To the freshmen, we leave our worn-out chewing gum and scarred desks, because we had to leave them to someone.

We, as individuals, would like to bequeath certain objects or characteristics to our underclassmen.

I, Rebecca Anglea, leave, hoping someone will give me a ring, too.

I, Truman Brewer, leave gladly.

I, Earl Hunter, leave a little of my weight to Jimmie Johnson.

I, Billy Williams, leave Margaret to the mercy of the rest of the wolves.

I, Mary Ann Lamberth, leave my drawl to anyone who wants it.

I, Joe Stewart, leave my football betting ability to Stanley Nesbitt, who needs it.

I, Rebecca Trammell, would leave my good grades to someone, but I may need them sometime in the near future.

I, Dorothy Mee, leave my quietness to Jane Dye.

I, Elsie Shirrell, leave my laugh to Lanny Moore.

I, Maxine Keye, leave my cute ways to Eurie Jean Jenkins.

I, Joyce Jones, leave my kindness to Mary Callis.

I, Betty West, leave my position as forward on the basketball squad to Lucille Dobbs.

I, Marjorie Brown, leave my intelligence (?) to Jane Briley.

I, Betty Coker, leave to take up housekeeping.

I, Claude Hardin, leave the quarterback position to Donald Ventress.

I, Leslie Harris, leave Pattie Sue regretfully.

I, Earl Knowles, leave the management of the Portland Panthers to Wayne Kelly.

I, Betty Hunter, leave my ability as a cheerleader to next year's cheerleaders.

I, Bobby Wilson, leave my basketball ability to Larry Johnson.

I, Billy West, leave my position as captain of the Panthers to "Red" Collins and Donnell Leath.

I, Talmadge Whitson, leave as lazy as ever!

I, Earnestine Trammell, leave my ability to make friends to everybody.

I, Jimmie Martin, leave my typing desk to anyone having three dollars and fifty cents.

I, Jean Short, leave my popularity to Dot Denning.

We, Woodroe Story and Jackie Myers, leave our mischievousness to Charles Wilson and Thomas Atchison.

I, Conway Brown, leave my well-worn sack of Country Gentlemen to "Bow-legs" Ragan so he won't be "bumming" all the time.

I, Betty Jo Brown, would like to leave—but can't.

We, Joe Devasher and Robert Garrett, leave that rough end position to anyone excelling in head-on tackling.

I, Betty Arnette, leave my seat on the bus to Jane Bell if she gets there fast enough.

I, Willard Hobdy, don't leave anything. (I'm taking it with me.)

We, Bonnie Jo Ashlock and Josephine Scott, leave to be away from Woodroe Story in sixth period English class.

I, Dot Brown, leave my ticklishness to Wanda Wallace.

I, Marie Harper, leave all the boys of S. C. H. S. (I got mine!)

We, Hezzy Lane and William Harper, leave our football ability to Joe Collins and Glen Glover.

I, Christine Hunnicutt, leave my acting ability to Pattie Sue Stinson.

I, Bobby Wilkinson, leave all the pretty girls of S. C. H. S. reluctantly.

I, Gerald McMurtry, have already gone. Bye!

I, Margaret Gregory, leave with fond memories of all my friends and classmates of Portland High.

I, Wilma Hodges, leave my freckles to Margaret Shablick.

We, Jean Link and Virginia Moore, leave our Glee Club positions to Mary Callis and Jane Briley.

I, Evelyn Prescott, hate to leave Claude but guess I'll have to go. (Maybe he'll ask me to stay awhile?)

I, Mary Francis Jones, leave a little of my height to Paul Heady. (As if he needed it!)

I, Jerry Stevenson, leave my trigonometry book complete with compass and protractor to Charlie Jones.

We, Catherine Clubbs and Betty Civils, leave with peace of mind which is more than we expected.

We, of the senior class, having bequeathed all our possessions in this will, do hereby leave, to be followed by many Senior classes, on the road to success.

By Jerry Stevenson

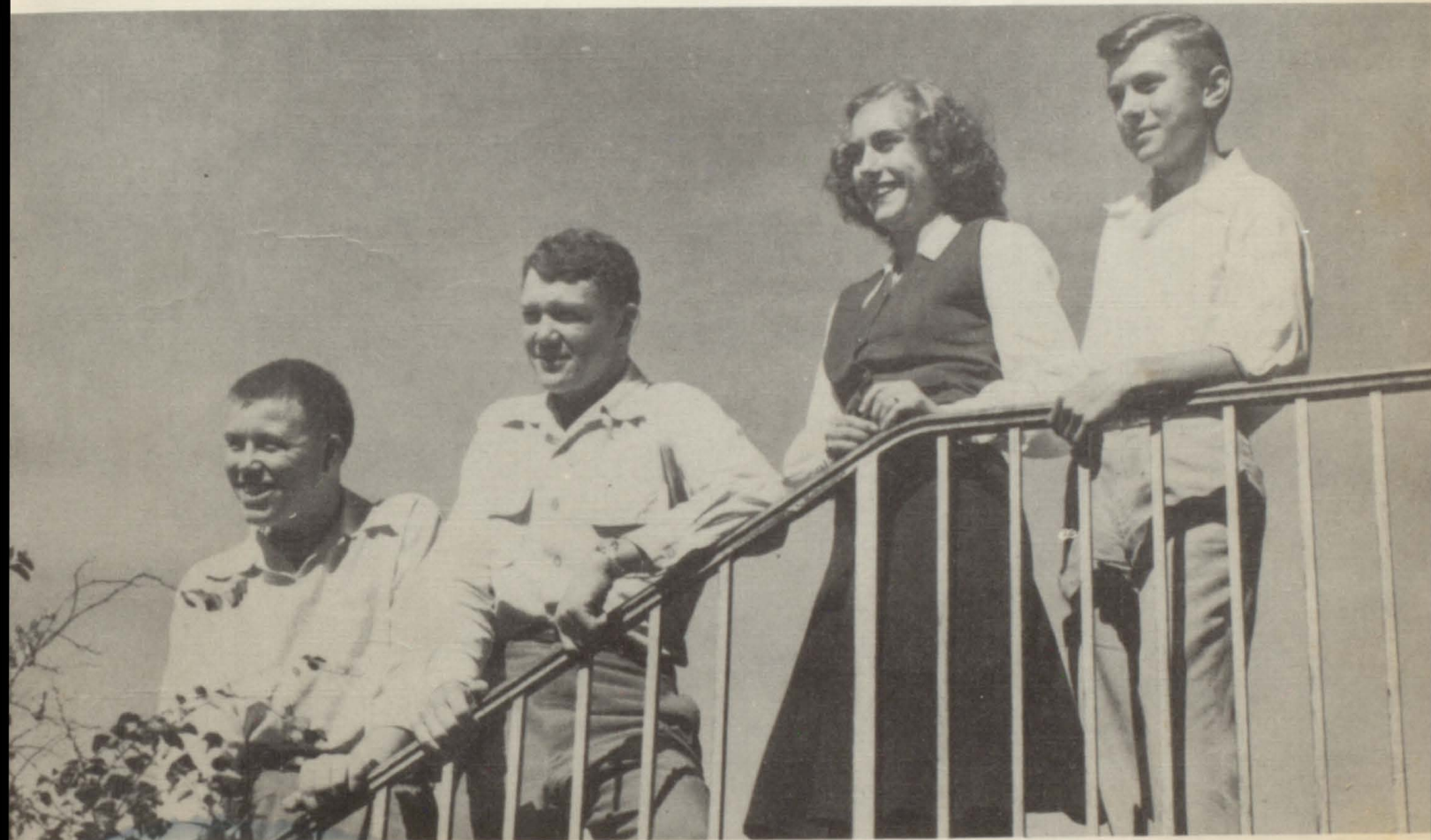
J u n i o r s



MOST OUTSTANDING

Dot Denning

Robert Brown



Harold Bell
Secretary

Joe Collins
President

Dot Denning
Treasurer

Robert Brown
Vice-President

CLASS OFFICERS

Mrs. Dorris - Mr. Bradley — Co-Sponsors

Thomas Atchison

"Talk to him of Jacob's ladder and he will ask the number of steps."

Harold Bell

"Young fellows will be young fellows."

Frances Bowers

"The only way to have a friend is to be one."

Blonnie Hugh Briley

"Speech is silver; silence is golden."

Jane Briley

"Impulsive, earnest, prompt to act, and make her generous thought a fact."

Joe Brown

"Genius is nothing but continued attention."

Robert Brown

"Work is work and must be done; nevertheless, I'll have my fun."

Mary Callis

"She has a voice of gladness, and a smile of beauty."

Nadine Claiborne

"With such a comrade, such a friend, I fain would walk till journey's end."

Joe Collins

"The world laughs with him, not at him."

Larry Collins

"Better late, than never."

Rebecca Cummings

"A small voice is better than a big echo."

Mary Ellen Dillard

"Make new friends but keep the old; Those are silver, these are gold!"

Dorothy Denning

"She's a girl with deep blue eyes in whose depths much mischief lies."

Sue Marie Dobbs

"A smile is the whisper of a laugh."

Jane Dye

"Existence is a merry treat, and every speech a jest."

Peggy Franklin

"Modest and sweet to all she meets."

Jeanette Freeland

"Great is the virtue of true friendliness."

David Farmer

"Never study too hard, a little learning can be a dangerous thing."

James Garrison

"Wait until you have something important before you say it."

PHOTO NOT AVAILABLE




Betty George
"Sincerity is her chief delight."

Paul Heady
"Ah, why should life all labor be."

Bessie Hughes
"She's too busy thinking to talk."



Eurie Jean Jenkins
"Neither too sober nor too gay, a sweet gal in every way."

Larry Johnson
"Not afraid of work, but not in sympathy with it."

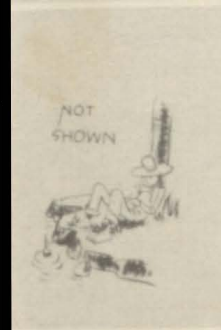
Charlie Jones
"If a thing is worth doing, it is worth doing well."



Jim Jones
"If study is the cause of death, I'll be here for a long time."

Era Link
"Her disposition is as sunny as her hair."

Eleanor Martin
"It is nice to be natural when you are naturally nice."



Johnny Merritt
"Study should not interfere with one's education."

Stanley Nesbitt
"With high endeavors and inward light that makes the path before him bright."

Harold Payne
"Why study, you only have more to forget."



Mary Jo Perdue
"A good heart is worth gold."

Billie Petty
"Kindness is dearer and better than gold."

Jean Ragan
"Treats all the same and slights no one."



Margaret Schablik
"She is pretty to walk with and witty to talk with."

Pattie Sue Stinson
"Happy am I; from care I'm free! Why aren't they all contented like me?"

Donald Ventress
"All great men are dead and I don't feel so good myself."



Wanda Wallace
"How far that little candle sheds its light."

Charles Wilson
"In search of mischief still on earth to roam."

Joyce Woodard
"I like the laughter that opens the lips and the heart."

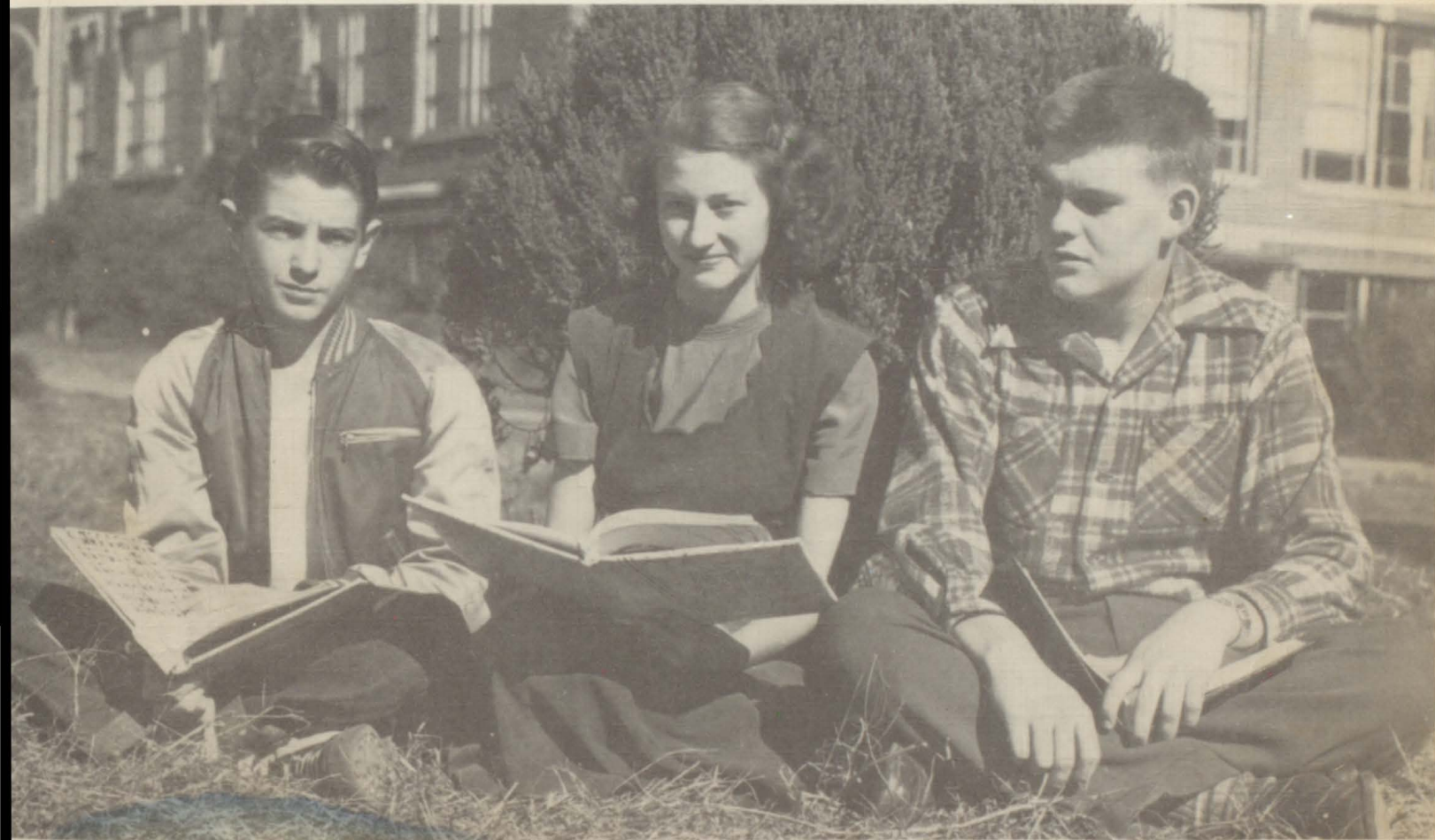




Sophomores



MOST OUTSTANDING
Betty Dye Frank Empson

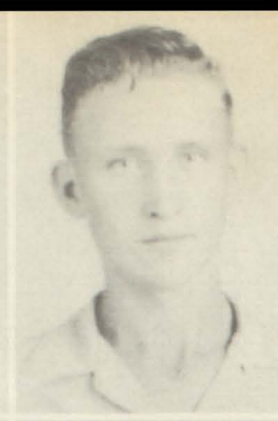


Frank Empson
Vice-President

Alberta Street
Secretary

Bert Anglea
President

CLASS OFFICERS



Mrs. Hunter
Patty Brown

Bert Anglea
Joanne Callis

Wayne Bennett
Love J. Clark

Lonnie Briley
Magdalene Cline

Anne Brown
Hugh A. Criag

Mr. Gregory
Lemorah Davenport



James Dickens
Joe David Dye

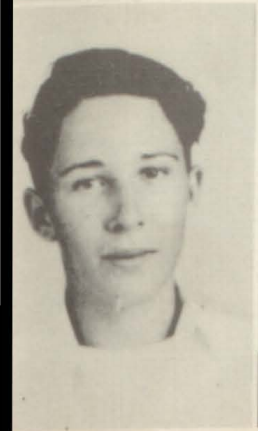
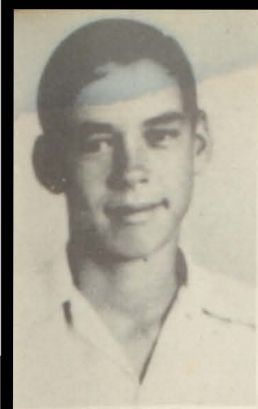
James Dobbs
Thomas Eidson

Joe Dobbs
Frank Empson

Lucille Dobbs
Cora Freeman

Nadean Douglas
Agnes Flatt

Betty Dye
Betty Graves



Wayne Gregory
Lloyd Hester

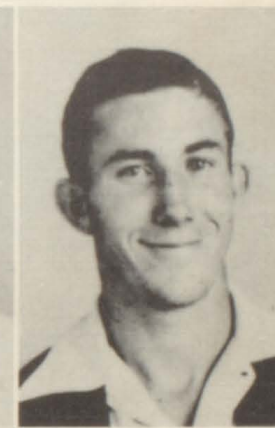
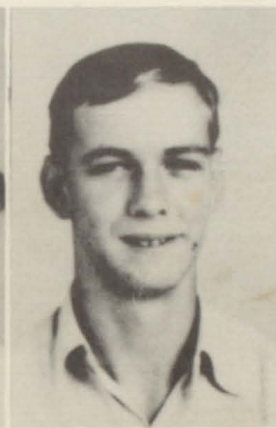
David Harper
Jordan Hunter

Harold Harper
Juanita Hunter

Kenneth Harper
Rebecca Hurt

Joanne Hart
Joe Jones

Pearl Heady
Paul Key



Wanda Kirkham
Shirley Lovell

Carol Knowles
Robert Martin

Noel Lane
Sue Martin

Carey Lanier
Jean Mayes

Donnell Leath
Johnnie
McCormack

Gloria Link
Lanny Moore



Mary Joyce Patton
Betty Anne
Riggsbee

Robert Pearson
William Roark

James Porter
Remona Scott

Harold Ragan
Leroy Simpson

Billy H. Ray
Alberta Street

Clyde Riggs
Bobby Tarrents



Maurice Utley
John Woodard

Sue Vanatta
Clyde Woodall

Thelma Wakefield
Goldie Woodall

Dan West
Harold Young

Lois West
Jeanette Porter

Less Wiseman
Imogene Anderson

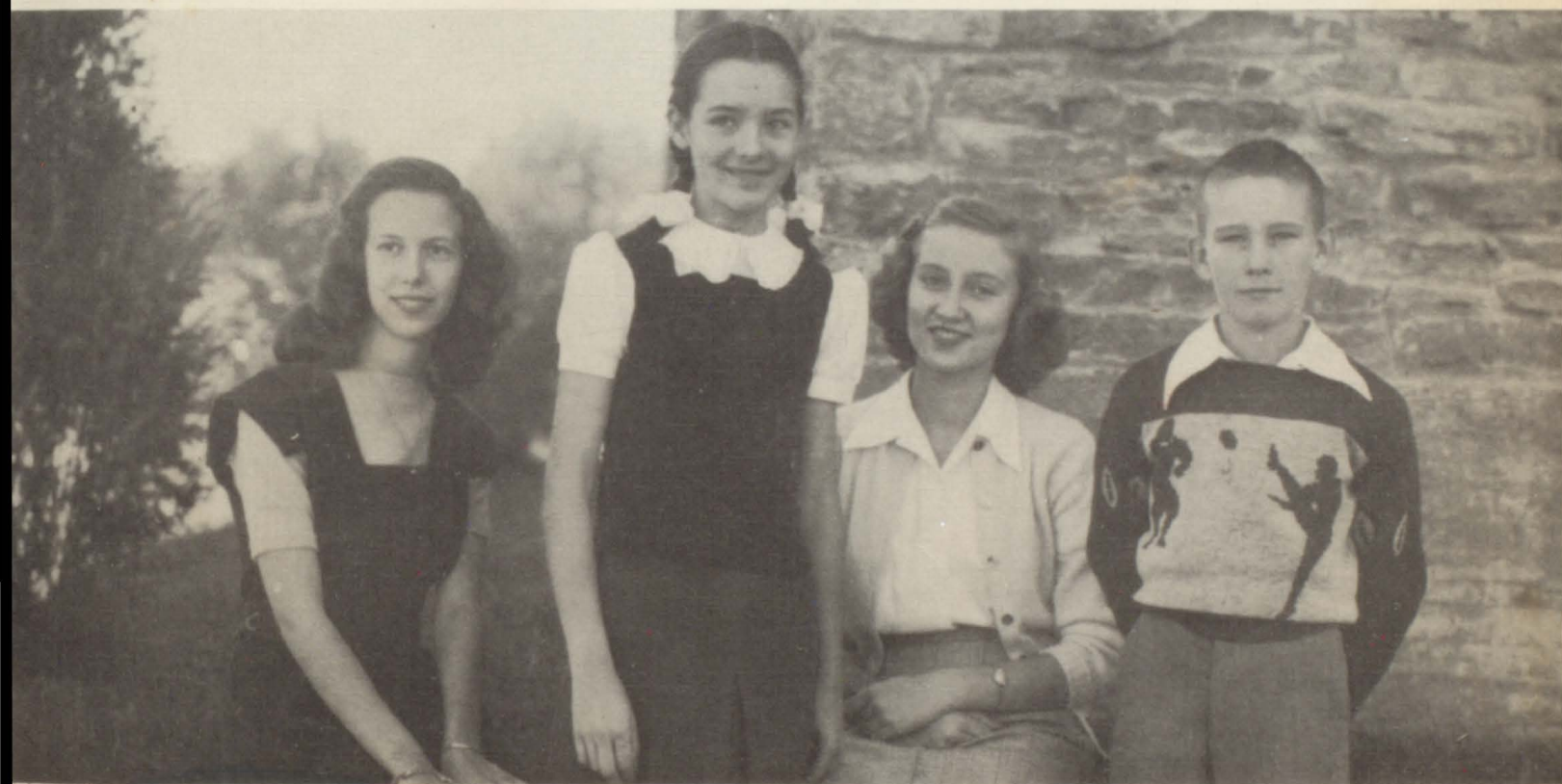


Yvonne Cummings

MOST OUTSTANDING

Glenn Glover

Freshmen



Lorene Williams
Reporter

Yvonne Cummings
Secretary and Treasurer

Joyce Freeland
President

Jimmy Johnson
Vice-President

CLASS OFFICERS



FRESHMAN CLASS

Joyce Freeland President
 Jimmy Johnson Vice President
 Yvonne Cummings Sec. and Treas.
 Lorene Williams Reporter
 Mrs. Mischnick — Mrs. Moore Co-Sponsors

Adams, Claris Dean
 Armstrong, Margaret
 Ausbrooks, Jennie Frank
 Bell, Jane
 Bennett, Gary
 Bolding, Paul
 Briley, Bonnie Mae
 Briley, Harold Dean
 Brown, Doris Mae
 Brown, Marie
 Chandler, Rhea
 Christianson, Jacob
 Claiborne, Laura
 Collins, Donald
 Collins, James
 Combs, Betty Jane
 Cook, Barbara Jean
 Crafton, John Paul
 Cron, Betty Jo
 Cummings, Yvonne
 Deasy, Barbara June
 Denning, Bobby
 Denning, Harold
 Dorris, Betty Jean
 Dorris, Kenneth
 Ferguson, Mary Frances
 Fleming, Wanda

Freeland, Billy
 Freeland, Joyce
 Gant, Dudley
 Garrett, Eugene
 Glover, Glen
 Goforth, Mary Grace
 Graber, Joe
 Graves, Mary Sue
 Gray, Juanita
 Gray, Paul
 Gregory, Florine
 Gregory, Rebecca
 Groves, Barbara
 Hammond, Addie Pearl
 Hardin, Bill
 Harper, Perry
 Harris, Joan
 Hillburn, Shirley
 Hodges, Ray
 Jenkins, Daphydene
 Johnson, Jimmy
 Jones, David
 Jones, Ralph
 Keene, Magdalene
 Kelly, Wayne
 Kepley, Virginia

Kirkham, David
 Law, Larry
 Leath, James
 Legge, Evelyn
 Long, Beatrice
 McCloud, Florence
 McCormack, Edna
 Neal, Bobby
 Oldham, Max
 Parker, Margaret
 Perdue, Minnie Lou
 Pond, Sonny
 Ray, Ann
 Shirrell, Alice
 Stout, Charles
 Street, Juanita
 Thompson, Bobby
 Thornton, Billy
 Wallace, Juanita
 Webb, Maynard
 White, Bobby
 Wilkes, Frank
 Williams, Charles
 Williams, Jane
 Williams, Lorene
 Williams, Mary E.
 Woods, Betty

Organizations



Joyce Jones
Home Ec.—Beta Club

Claude Hardin
Letter Club

Billie Petty
Language Club

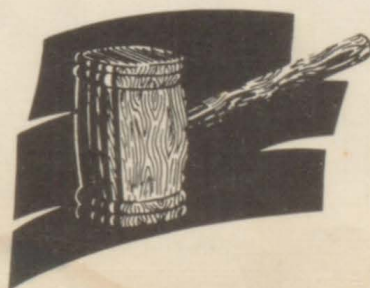
Rebecca Anglea
N. F. L.

Jane Dye
Science Club

Leslie Harris
F. F. A.

Jean Short
Editor of Yearbook
Thespian Troupe

CLUB PRESIDENTS





PURPLE HERALD STAFF

Editor-in-Chief Jean Pond Short
 Assistant Editor Betty West
 Business Manager Jane Briley

Rebecca Anglea
 Bonnie Jo Ashlock
 Jane Briley
 Anne Brown
 Marjorie Brown
 Betty Coker
 Dot Denning
 Janette Freeland
 Bettie George
 Marie Harper
 Christine Hunnicutt
 Maxine Keye
 Wanda Kirkham
 Carol Knowles

Mildred McDougal
 Mary Joyce Patton
 Evelyn Prescott
 Margaret Schablik
 Josephine Scott
 Elsie Shirrell
 Jean Pond Short
 Pattie Sue Stinson
 Ernestine Trammell
 Rebecca Trammell
 Maurice Utley
 Wanda Wallace
 Betty West
 Lorene Williams



SCHS



NATIONAL THESPIAN SOCIETY

Troupe No. 564

Jean Short	President
Rebecca Trammell	Vice President
Dot Denning	Secretary
Betty Jo Brown	Treasurer

Rebecca Anglea
Betty Arnette
Anne Brown
Betty Jo Brown
Dot Brown
Dot Denning
Betty Coker
Jane Dye
Joe Graber
Leslie Harris
Christine Hunnicutt
Betty Hunter
Jordan Hunter

Joyce Jones
Maxine Keye
Carol Knowles
Mildred McDougal
Billie F. Petty
Sonny Pond
Margaret Schablik
Jean Pond Short
Pattie Sue Stinson
Rebecca Trammell
Maurice Utley
Frank Wilkes
Bobby Wilson

BETA CLUB

Joyce Jones — President
Rebecca Trammell — Vice President
Margaret Schablik — Secretary
Christine Hunnicutt — Treasurer
Mrs. Hunnicutt — Sponsor

Bowers, Frances
Briley, Jane
Brown, Anne
Callis, Mary
Callis, Joan

Claiborne, Nadine
Dye, Betty
Dye, Jane
Hunter, Betty Jean
Kirkham, Wanda
Knowles, Carol

Petty, Billie
Short, Jean
Street, Alberta
Wakefield, Thelma
West, Betty
Woodard, Joyce



GLEE CLUB

Armstrong, M.
Atcheson, T.
Ausbrooks, F.
Bell, J.
Bowers, F.
Briley, J.
Brown, A.
Brown, B.
Brown, C.
Brown, D.
Brown, Dot.
Brown, M.
Brown, P.
Callis, J.
Callis, M.
Callis, B.
Claiborne, L.
Cline, M.
Collins, J.
Clark, L.
Combs, B.
Cook, J.
Cummings, Y.

Deasy, J.
Denning, D.
Denning, H.
DeVasher, J.
Dillard, M.
Dobbs, J.
Dorris, B.
Dye, B.
Dye, J.
Flatt, A.
Fleming, W.
Freeland, J.
George, B.
Goforth, G.
Gregory, M.
Gray, P.
Graves, B.
Graves, M.
Hardin, C.
Hart, J.
Harris, J.
Heady, P.
Hester, L.

Hunnicut, C.
Hunter, B.
Jenkins, E.
Johnson, L.
Jones, D.
Key, P.
Knowles, C.
Kirkham, W.
Lane, H.
Legge, E.
Link, E.
Link, G.
Link, J.
Long, B.
Lovall, S.
Martin, S.
McCormack, E.
McDougal, M.
Moore, L.
Moore, V.
Nesbitt, S.
Patton, M.
Perdue, M. J.

Perdue, M.
Petty, B.
Prescott, E.
Ragan, H.
Ragan, J.
Schablick, M.
Stinson, P.
Street, J.
Trammell, E.
Trammell, R.
Utley, M.
Wakefield, T.
Wallace, J.
Wallace, W.
West, B.
West, L.
Wilkinson, B.
Williams, B.
Williams, L.
Wilks, F.
Wilson, B.
Woodall, C.
Woodard, J.





Joyce Jones
President

Bonnie Ashlock
Vice-President

Betty Hunter
Secretary

Carol Knowles
Treasurer

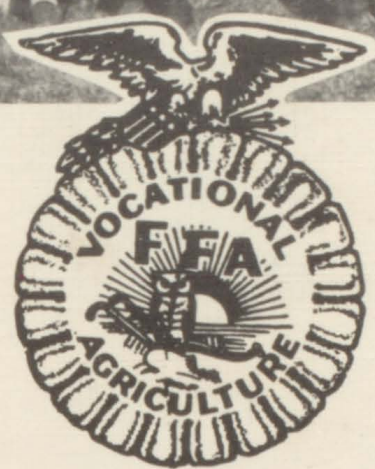
Mrs. Dorris
Sponsor

Adams, Claris
Armstrong, Margarette
Ashlock, Bonnie
Bell, Jane
Briley, Bonnie
Brown, Marie
Brown, Dorris
Brown, Patty
Brown, Betty
Callis, Joanne
Claiborne, Laura
Clark, Love Joy
Cook, Jean
Combs, Betty
Cummings, Yvonne
Comings, Rebecca
Davenport, Lemorah
Deasy, June
Dillard, Mary E.
Dobbs, Lucille

Dobbs, Sue
Dorris, Betty
Douglas, Nadean
Ferguson, Mary
Flatt, Agnes
Flemming, Wanda
Freeland, Joyce
Freeman, Cora
Graves, Mary
Gray, Juanita
Goforth, Grace
Gregory, Florine
Gregory, Rebecca
Groves, Barbara
Hammond, Addie
Harris, Joan
Heady, Pearl
Hillburn, Shirley
Hughes, Bessie
Hunter, Betty

Hunter, Juanita
Jenkins, Eurie
Jenkins, Daphydean
Jones, Joyce
Jones, Mary
Keene, Magdaline
Kepley, Virginia
Knowles, Carol
Legge, Evelyn
Link, Jean
Link, Gloria
Long, Beatrice
Lovell, Shirley
Martin, Sue
Martin, Eleanor
Mayes, Jean
Mee, Dorothy
McCloud, Florence
McCormack, Edna
Moore, Virginia

Parker, Margaret
Patton, Mary
Perdue, Minnie
Ray, Anne
Riggsbee, Betty
Scott, Ramona
Scott, Josephine
Sherrill, Elsie
Sherrill, Alice
Stinson, Pattie
Street, Juanita
Vanatta, Sue
Wakefield, Thelma
Wallace, Juanita
West, Lois
Williams, Jane
Williams, Lorene
Williams, Mary
Woodall, Goldie
Woods, Betty



Leslie Harris	President
Donald Ventress	Vice President
Donnell Leath	Secretary
Larry Johnson	Treasurer
Mr. Dorris	Sponsor

Anglea, Bert
 Bennett, Wayne
 Brewer, Truman
 Briley, Blonnie
 Briley, Harold
 Briley, Lonnie T.
 Brown, Conway
 Chandler, Rhea
 Collins, Donald
 Collins, James
 Collins, Joe
 Collins, Larry
 Crafton, John
 Craig, Hugh
 Denning, Bobby
 Dickens, James

Dobbs, Joe
 Dobbs, Jimmy
 Dye, Joe
 Farmer, David
 Freeland, Billy
 Garrett, Robert
 Garrett, Eugene
 Glover, Glenn
 Gray, Paul
 Gregory, Wayne
 Harper, David
 Harper, Harold
 Harper, Kenneth
 Harper, Perry
 Heady, Paul
 Hodges, Ray
 Johnson, Jimmy

Johnson, Larry
 Jones, David
 Jones, Joe
 Jones, Ralph
 Key, Paul
 Kirkham, David
 Law, Larry
 Leath, Donnell
 Leath, James
 Martin, Bobby
 Martin, Jimmy
 McCormack, John
 Myers, Jackie
 Neal, Bobby
 Oldham, Max
 Owen, Stanley
 Payne, James

Ray, Billy
 Roark, William
 Stout, Charles
 Tompson, Bobby
 Tarrents, Bobby
 Ventress, Donald
 Webb, Maynard
 West, Dan
 White, Bobby
 Williams, Charles
 Wilson, Charles
 Wiseman, Less
 Wix, Henry
 Woodard, John
 Woodall, Clyde
 Young, Harold

LANGUAGE CLUB

Billie Frances Petty	President
Betty Hunter	Vice President
Margaret Schablik	Secretary
Billie Frances Petty	President
Jane Briley	Treasurer
Betty West	Reporter
Mrs. Jernigan	Co-sponsors
Mrs. Moore	

Brown, Anne
 Claiborne, Nadine
 Clubbs, Catherine
 Denning, Dorothy
 Dye, Betty
 Dye, Jane
 Franklin, Peggy
 Freeland, Jeanette
 George, Betty

Hart, Joan
 Hunter, Jordan
 Hurt, Rebecca
 Jones, Joyce
 Jones, Mary Frances
 Kirkham, Wanda
 Link, Era
 Merritt, Johnnie

Perdue, Mary Jo
 Ragan, Jean
 Riggs, Billy
 Street, Alberta
 Trammell, Ernestine
 Trammell, Rebecca
 Utley, Maurice
 Wallace, Wanda
 Woodard, Joyce



FESSOR'S DOOLITTLES

Jane Dye	President
Margaret Schablik	Vice President
Wanda Wallace	Secretary
Billie Frances Petty	Treasurer
Ann Brown	Reporter
Lawrence Bradley	Sponsor

Wayne Bennett
 Frances Bowers
 Ann Brown
 Dorris Brown
 Dot Brown
 Patty Brown
 Joan Callis
 Mary Callis
 Yvonne Cummings
 Dot Denning
 Lucille Dobbs
 Betty Faye Dye
 Jane Dye

Mary Frances Ferguson
 Robert Garrett
 Joe Graber
 Mary Sue Graves
 Joan Hart
 Lloyd Hester
 Rebecca Hurt
 Charlie Jones
 Wanda Kirkham
 Carol Knowles
 Evelyn Legge
 Shirley Lovell
 Edna Frances McCormack

Stanley Nesbitt
 Mary Joyce Patton
 Billie Frances Petty
 Margaret Schablik
 Pattie Sue Stinson
 Alberta Street
 Juanita Street
 Maurice Utley
 Wanda Wallace
 Frank Wilkes
 Billy Williams
 John Woodard
 Joyce Woodard



LETTER CLUB



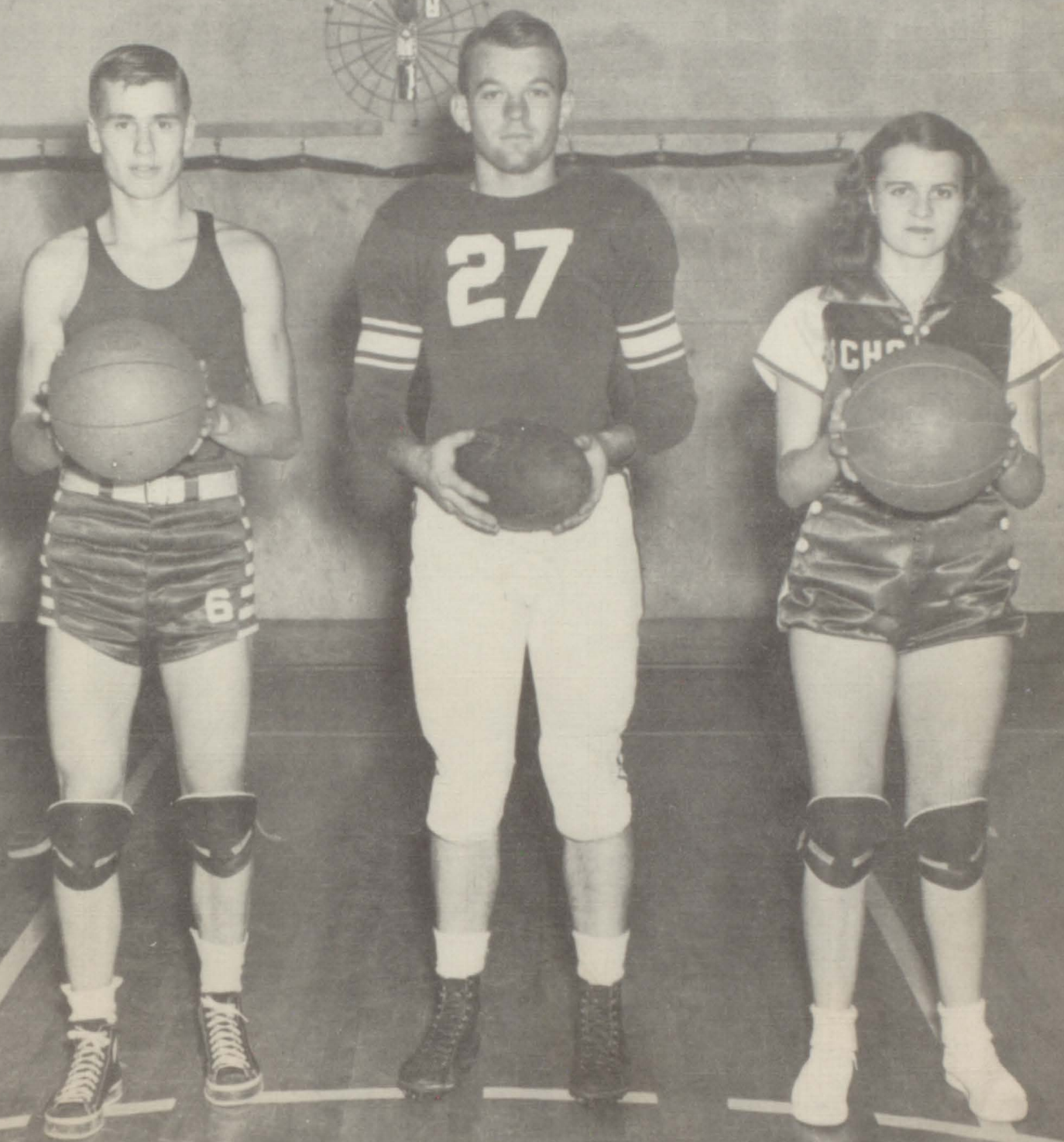
THE LETTER CLUB

Claude Hardin President
 Howard Lane Vice President
 Betty West Secretary
 Dorothy Denning Treasurer

Bert Anglea
 Betty Arnette
 Harold Brown
 Betty Jo Brown
 Larry Collins
 Joe Collins
 Joe DeVasher
 David Farmer
 Robert Garrett
 Bettie George
 Glen Glover
 Rebecca Gregory
 William Harper
 Leslie Harris
 Earl Hunter
 Betty Hunter

Larry Johnson
 Wayne Kelly
 Earl Knowles
 Noel Lane
 Donnell Leath
 Jean Mayes
 Johnnie McCormack
 Gerald McMurtry
 Lanny Moore
 Bobby Neal
 Billie Frances Petty
 Jean Short
 Billy West
 Bobby Wilkinson
 Billy Williams
 Bobby Wilson

SPORTS



Bobby Wilson

Billy West

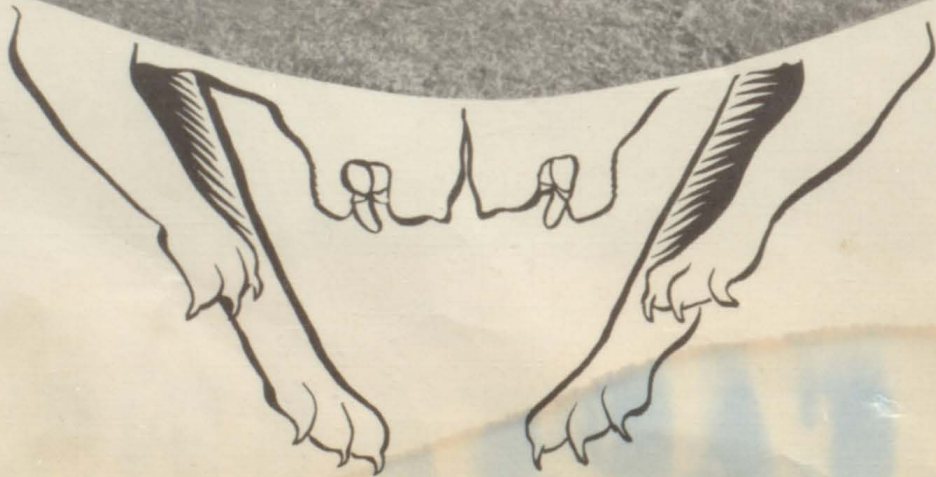
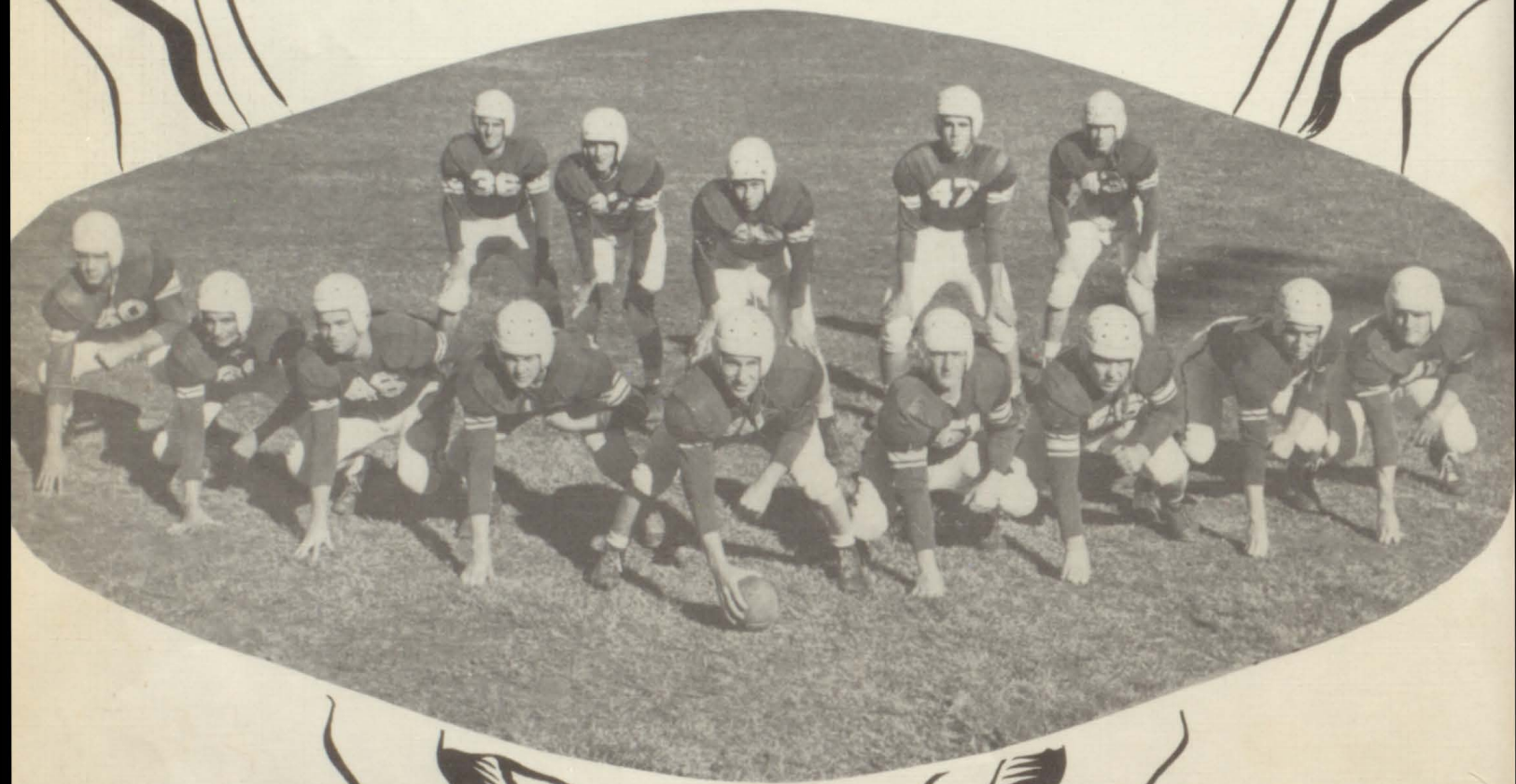
Jean Short



CAPTAINS



PANT THE ERS



C.V.C. CHAMPS



SCHEDULE

September 9
 September 16
 September 23
 September 30
 October 7
 October 17
 October 21
 October 28
 November 4
 November 11
 November 23

Portland 0
 Portland 13
 Portland 7
 Portland 33
 Portland 53
 Portland 21
 Portland 0
 Portland 32
 Portland 28
 Portland 92
 Portland 0

Russelville, Ky. 19
 Watertown 0
 Nashville Central 14
 Lebanon 19
 Hendersonville 13
 Carthage 0
 Mt. Pleasant 27
 Hartsville 6
 Gordonsville 0
 Lafayette 7
 Gallatin 0



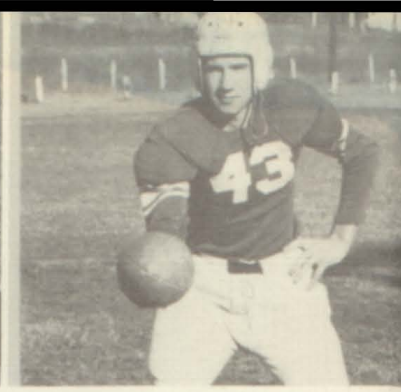
Bobby Wilkinson
Left End



Billy West
Tackle



Bobby Neal
Wing Back



Claude Hardin
Quarterback



Howard Lane
Full Back



Kelly
Manager



Joe Collins
All CVC Guard

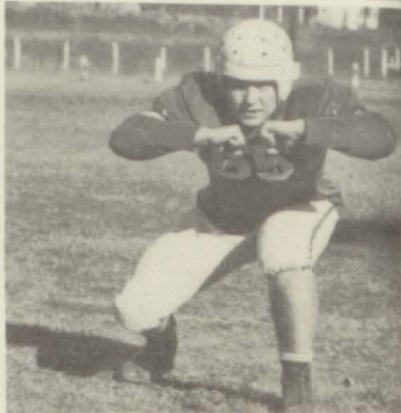


Joe DeVasher
All CVC Right End

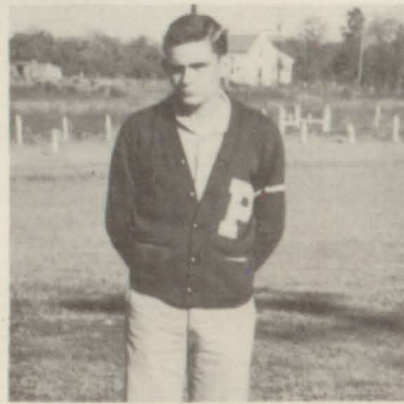


Coach Douglas
McDonald

Gerald McMurtry
All CVC Tackle

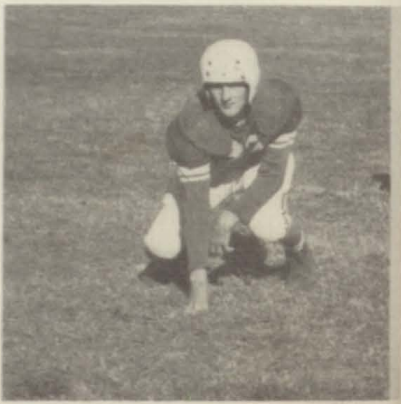


Robert Garrett
Left End

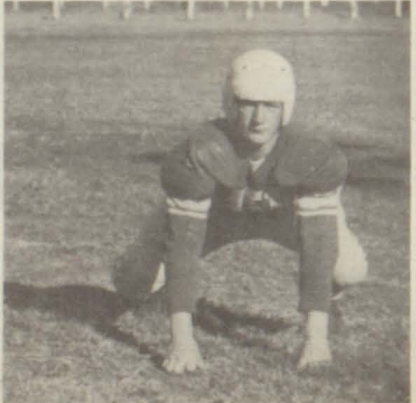


Knowles
Manager

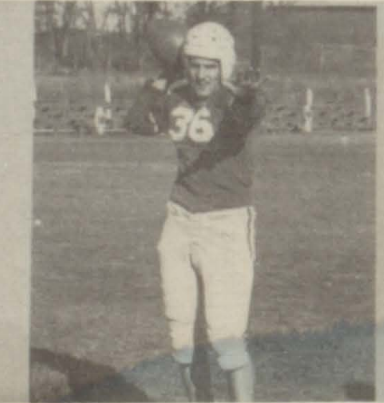
Larry Johnson
Wing Back



Donnell Leath



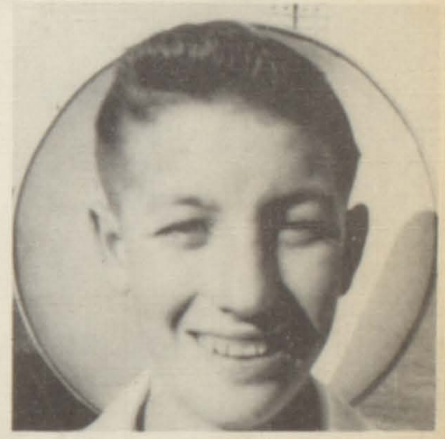
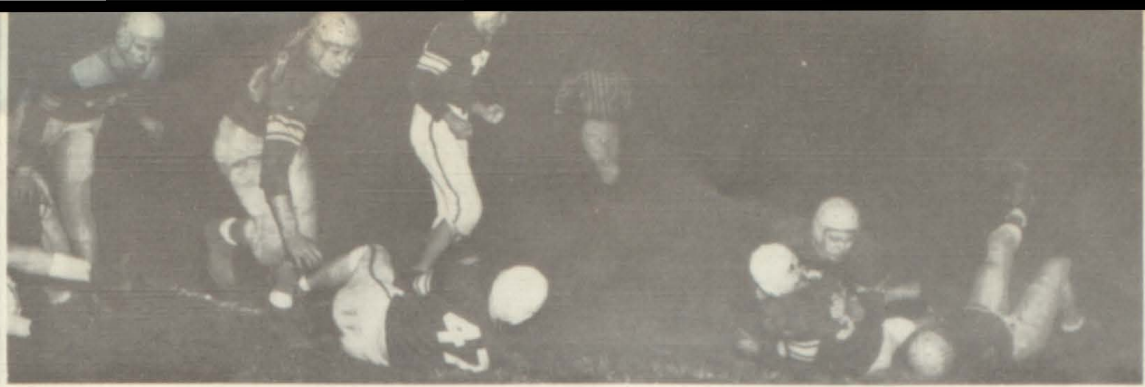
William Harper
Guard



Glenn Glover
Tail Back



Leslie Harris, All CVC Fullback
Most Valuable Player





Jean Short—Captain
Guard
Senior



Coaches
Mrs. Earl Jernigan
Mr. W. M. Hunter



Managers
Jane Briley
Betty George



Betty Hunter
Forward—Senior
Co-Captain



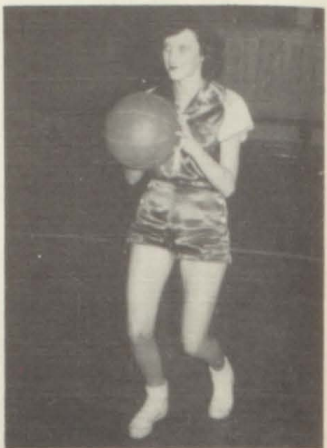
Dot Denning
Guard
Junior



Billy Petty
Guard
Junior

GIRLS BASKETBALL

1949 - 50



Betty West
Forward
Senior



Betty Arnette
Guard
Senior



OTHER SQUAD MEMBERS

- | | |
|--------------|-----------|
| C. Hunnicutt | W. Hodges |
| S. Martin | M. Callis |
| J. Hart | J. Dye |



Lucille Dobbs
Forward
Sophomore



Doris Brown
Forward
Freshman



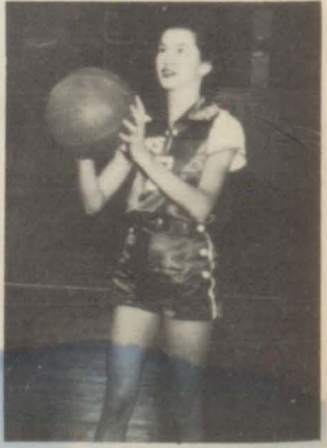
Mary Patton
Guard
Sophomore



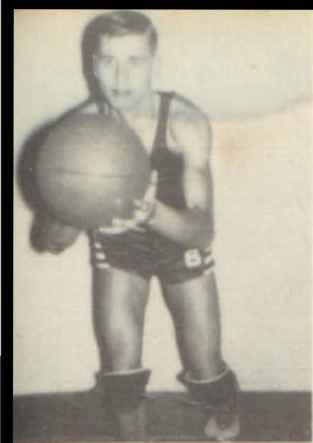
Sue Martin
Guard
Sophomore



Joan Harris
Forward
Freshman



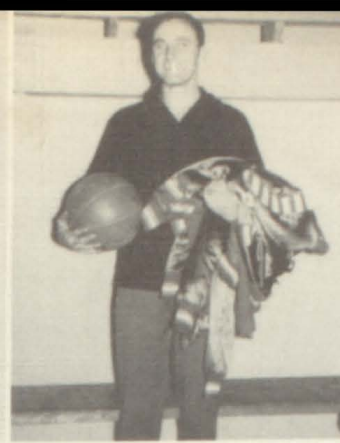
Janette Freeland
Forward
Junior



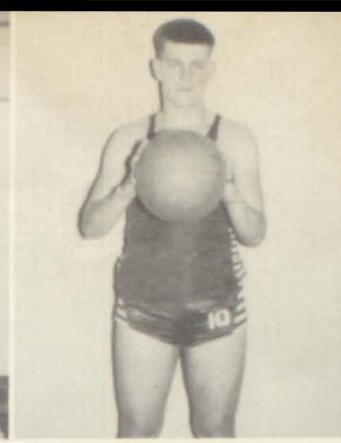
Bobby Wilson—Captain
Guard
Senior



Coach
Douglas McDonald



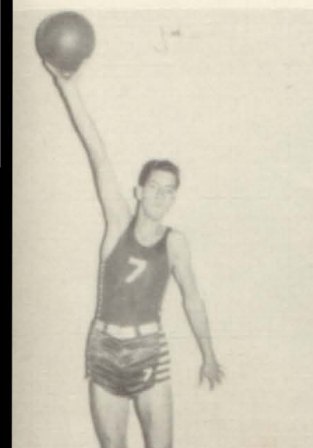
Manager
Howard Lane



Bert Anglea—Co-Capt.
Forward
Sophomore

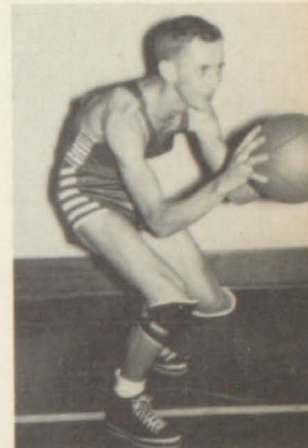


Charles Wilson
Guard
Junior

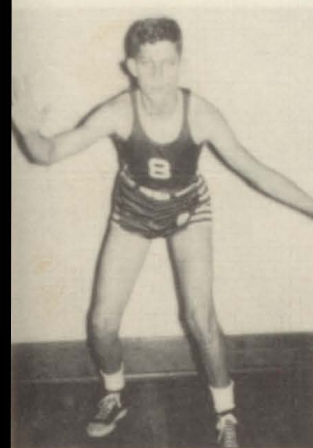


Jim Jones
Center
Junior

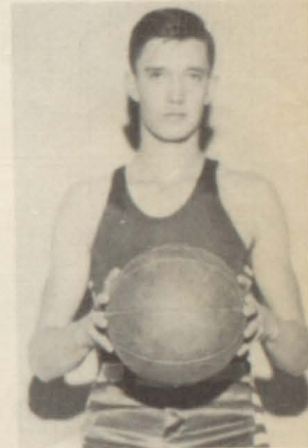
BOYS BASKETBALL
1949-50



Larry Johnson
Forward
Junior



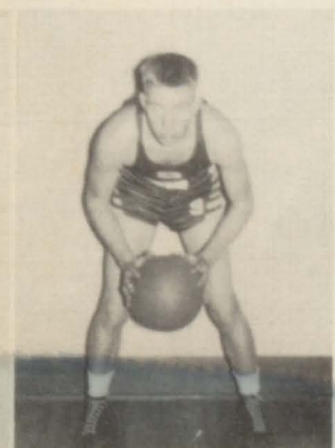
Lanny Moore
Guard
Sophomore



Joe Dobbs
Center
Sophomore



Glen Glover
Forward
Freshman

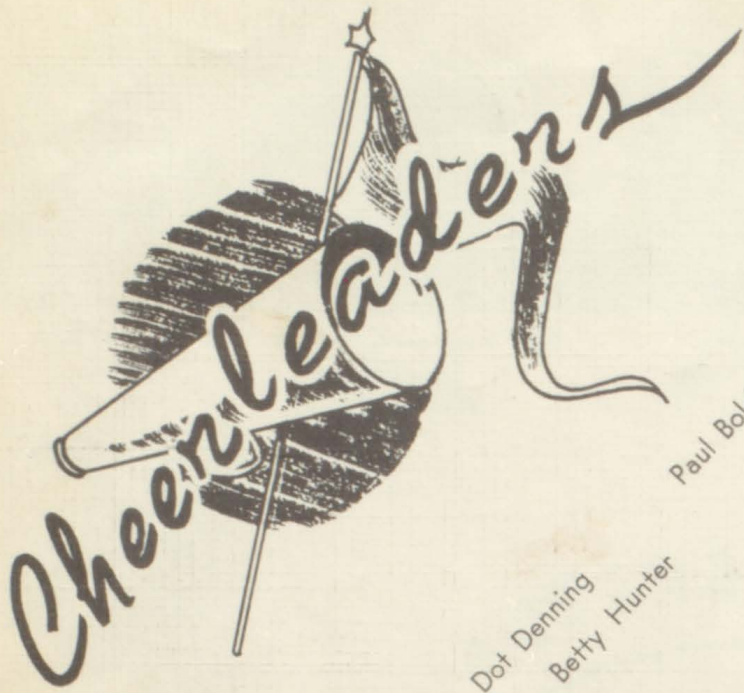


Bobby Neal
Guard
Freshman



David Farmer
Forward
Junior

Cheerleaders



Rebecca Gregory

Betty Jo Brown

Jean Mayes

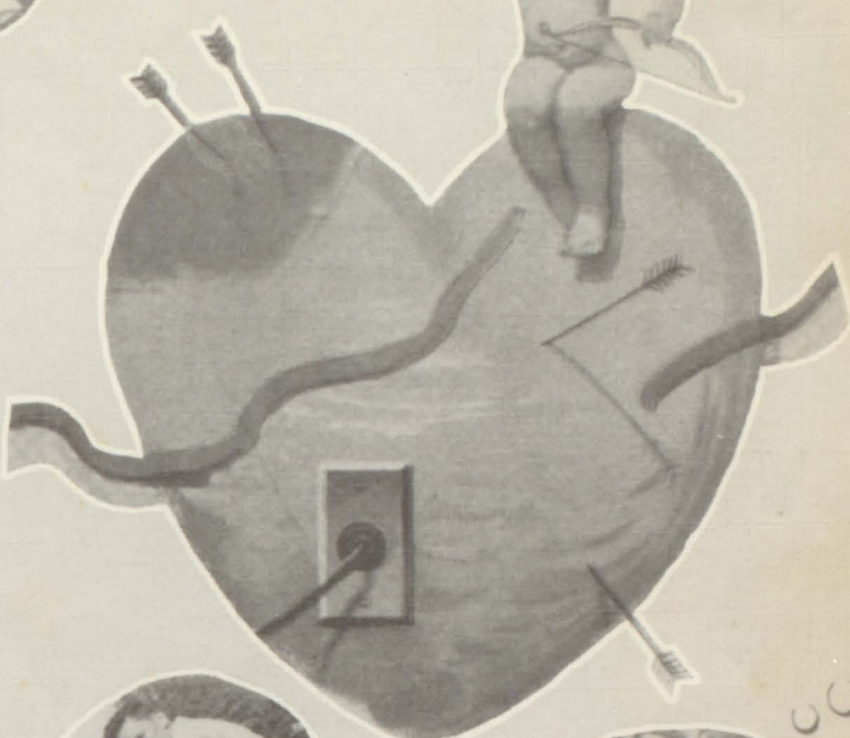
Jean Short
Captain

Dot Denning

Betty Hunter

Paul Bolding









Backful

DEAD OR ALIVE

What a smile

PARKING

DINNER

Hula Hula

THREE DEEP!

QUEEN MAXINE

I'm forever blowing bubbles

Piano's missing

Dear Heart

PAGE GIRLS

LATEST Screen Fashions?

So Sudden!

YEA-RAH! BETAS

CLEAR THE HALLS!

Puppy Love

STOP

BIG SHOTS

DROPPED SOMETHING RED?

LOAD LIMIT 5-TONS

LOADED!

52

SO ROUND SO FIRM SO FULLY RACKED

COMPLIMENTS OF

The Farmers
BANK

Member of F. D. I. C.

Portland, Tennessee

COMPLIMENTS OF

Portland
PLANING MILL

Portland, Tennessee

HILL LUMBER

Manufacturers of Hardwood Lumber
and Building Material

Flooring Weatherboarding
Ceiling Mill work

Portland, Tennessee

PARKER SHOE SHOP

Portland, Tennessee

Compliments of
PORTLAND BILLIARD PARLOR

C. R. BEATY, Prop.
Portland, Tenn.

Compliments of

Portland Hatchery & Feed Mill
Quality Chicks—Master Mix Feeds
Custom Grinding
Portland, Tenn. Phone 122W

Compliments of
Tenn. Gas and Transmission Co.
Employees
PORTLAND, TENN.

PEPSI COLA BOTTLING CO.

The Drink that Refreshes



Compliments of
VAL R. LOVELL
Distributor of Truli-Pure Products
NASHVILLE PURE MILK CO.

ECONOMY SUPPLY CO.

Furniture—Frigidaire—Appliances
Portland, Tennessee

CARUTHERS & ADAMSON
Shell Products
Tires—Tubes—Accessories
Portland, Tenn. Phone 220

Compliments of
The Upper Sumner Press
Portland, Tennessee

Compliments of
S. W. DORRIS
Groceries — Meats
PORTLAND, TENN.

Goad's Service Station
Goodyear Tires—Batteries
Texaco Products
Portland, Tenn. Phone 162

L. G. BALFOUR COMPANY
Attleboro, Massachusetts

Class Rings and Pins — Commencement Invitations
Diplomas — Personal Cards — Club Insignia — Memorial Plaques

Representative: **MR. IRVING HARRIS**
P. O. Box 469
Jackson, Tennessee

Hubert Creasey Lumber Co.

SERVICE & SATISFACTION

West Main Street

Phone 44

FRANKLIN, KY.

L. A. Green Seed Co.
We buy & sell all kinds of seed
Phone 662
Gallatin, Tennessee

Kraft Foods
Gallatin, Tennessee

Compliments of
Randy's Record Shop
Gallatin, Tennessee
Phones 880 and 881

Kemp Motor Co.
Gallatin, Tennessee

Compliments of
Ford Furniture Co.
Gallatin, Tennessee Franklin, Ky.

Insure your car in the
World's Largest Auto Insurance Co.
"It costs less."
W. D. GREEN, Agent Gallatin, Tenn.

Good Gulf Products
South Side Service Station
Gallatin, Tennessee

Compliments of
Gallatin Flower Shop
Gallatin, Tennessee

Compliments of
Layon Brown
County Court Clerk of
Sumner Co.

Compliments of
Porter W. Womack
Registrar of Sumner County

Bradley's
On the Square
Gallatin, Tennessee

Kelly's Esso Station
Atlas Tires—Batteries—Accessories
Portland, Tennessee

Gossett Motor Co.
Ford Tractor and Implement Agency
EXPERT AUTO REPAIRING
Wrecker Service—Day or Night
PAUL GOSSETT
Phone 40 and 141

J. E. Kerley & Sons
Hardware, Furniture, Rugs
Plumbing & Heating Supplies
Refrigerators—Radios—Stoves—
Ranges
PORTLAND, TENNESSEE

SIMPSON CO. LOOSE LEAF FLOORS
Burley and Air Cured

"THE HOUSE THAT SATISFIES"
Franklin, Ky.

D. W. BILLINGSLEA

LEWIS RUTHERFORD

Allen Garment Co. Franklin, Ky. Nashville, Tennessee	NEW FARMERS TOBACCO WAREHOUSE "the warehouse with perfect light" Franklin, Ky. Phone 302-W
Stewart Lumber Co. Dealers in Lumber and Building Material Franklin, Ky. Phone 157	W. C. GRAINGER & SARA PEBBLES Real Estate—Investments Franklin, Ky. Phone 193
Everything for the Auto DODGE—PLYMOUTH—INTERNATIONAL MASSEY MOTOR CO. Franklin, Ky.	Your Magic Chef Gas Range Leader SIMPSON CO. HARDWARE Franklin, Ky. Phone 651
Compliments of LANIER CHEVROLET CO. Franklin, Ky. Phone 22	W. P. ROARK Insurance of all Kinds Franklin, Ky.
PAYNE BROS. SEED CO. Garden & Field Seed Phone 757 Gallatin, Tennessee	WORKMAN'S JEWEL CAVE DIAMONDS—WATCHES—JEWELRY Watch & Jewel Repair Gallatin, Tennessee
WADE MOTOR CO. ONLY AUTHORIZED FORD DEALER IN SUMNER COUNTY "We appreciate your business" Gallatin, Tennessee	Compliments of LERMAN BROS. Franklin, Ky. Phone 151
SIMPSON COUNTY SEED AND FARMERS COOP. Seed and Farm Supplies Franklin, Ky.	Compliments of FARMERS ELEVATOR CO. Franklin, Ky.

COMPLIMENTS OF

Stark's Studio

Gallatin, Tennessee

Compliments of
Portland Hardware Co.
Portland, Tennessee

Compliments of
Young Drug Company
"Your Prescription Store"
Phone 69 Portland, Tennessee

"We write fire, windstorm, and
automobile insurance.
Are you protected?"
H. K. SHANNON INSURANCE AGENCY
Portland, Tennessee

Compliments of
Booker's Store
Portland, Tennessee

Compliments of
Jernigan's Grocery
Phone 148 Portland, Tenn.

Consumers Drug Co.
THE REXALL STORE
Phone 39 Portland, Tenn.

Compliments of
W. L. Bentley's
5 and 10 cent Store
Portland, Tennessee
We extend hearty & sincere
congratulations, Seniors!

Compliments of
Chandler's Store
Portland, Tennessee

Moore's Department Store
DRY GOODS SHOES
Phone 29 Portland, Tenn.

Compliments of
Dawson's Grocery
Portland, Tennessee

Compliments of
Fred Brizendine
Groceries—Meats—Vegetables
Portland, Tennessee

Compliments of
Deasy Machine Company
Portland, Tennessee

Compliments of
Shannon's Firestone Store
Home & Auto Supplies
Portland, Tennessee

Compliments of
Gordon Foods
"Trucks Serving the Best"
Nashville, Tennessee

Reddick Barber Shop
"For that smooth, well-groomed
look!"
Portland, Tennessee

Compliments of
Strawberry Crate Co.
Home-Owned Industry That
Deserves Your Business

PLANTERS LOOSE LEAVE FLOOR I & II
BURLEY AND ONE SUCKER

Franklin, Ky.

PAUL JACKSON
JUDGE PHILLIPS

NOTLEY SMITH
HAL JACKSON

Bryant's Photo Supply
Everything Photographic
Franklin, Ky.

Lucas Seed & Feed Co.
Wholesale field seed—cleaners—
alfalfa—Hermitage Feeds
Franklin, Ky.

Jenkins & Wynne Motor Co.
Your Friendly Ford Dealer
"For a nifty Fifty, Buy a '50 Ford"
214 South Main St.
Franklin, Ky.

Franklin Burley Market
Franklin, Ky.
J. H. Freeman Dan E. Smith

Gallatin Upholstering Co.
for
Furniture & Automobile
Auto tops
Gallatin, Tennessee

Gallatin Book & Jewelry Store
Jewelry—Sporting Goods—
School Supplies
Gallatin, Tennessee

Compliments of
The Sumner County News
Gallatin, Tennessee

Gallatin Motor Co.
Pontiac Dealer
Phone 99—N. B. Franklin—Gallatin

Compliments of
Hester Motor Co.
Gallatin, Tennessee

Gallatin Bag & Mdse. Co.
Manufacturers Outlet
"Shop upstairs and save!"
Gallatin, Tennessee

Compliments of
Aaron's
Gallatin, Tennessee

W. N. Robertson & Co.
Furniture—Appliances—Floor Covering
Gallatin, Tennessee

Compliments of
Bradley and Johnson Imp. Co.
Gallatin, Tennessee

Crescent Hill Milk Service
Pasteurized Dairy Products
Homogenized—Vitamin D
Phone 72
Gallatin, Tennessee

Compliments of

R. C. OWEN TOBACCO CO.

Gallatin, Tenn.

Compliments of

A Friend

H. W. Lay and Co.
Nashville, Tennessee

Compliments of
Portland Coal & Supply Co.
Phone 50 Portland, Tenn.

Portland Cleaners
"Pick up and Deliver".
Phone 200 Portland, Tenn.

Compliments of
Short's Laundry & Dry Cleaners
Phone 217 J Portland, Tenn.

Compliments of
Hostess Cake Co.
Hershel Thornton, Salesman

Drink
Coca-Cola
in Bottles

Twyford's Little Dress Shop
Vogue Beauty Shoppe
Sweet Shoppe
South Side Grocery
South Side Service Station
Lake Potts
Hughes Hardware Co.
Fains Ladies Wear
Lundy Furniture Co.
Gallatin Dry Goods Co.
Randolph House & Co.
Brown & Dalton
Roth Jewelry Co.
Anderson, Yowell & Rippey
Ed Lane, Circuit Court Clerk
T. S. Butt, County Judge
H. A. Cage, Trustee
V. G. Hawkins
Carmack Motor Co.
Wakefield Food Market
Hershel Smith Drug Co.
Crescent Furniture Co.
Jennings B. Duncan Drug Co.
Powell Tire Co.
Crutcher's Market

Planters Tobacco Warehouse

No. I and II

Carroll Johnson, Mgr.
David S. Bradley

R. S. Harsh
J. D. Harsh

"We appreciate your business."
Gallatin, Tenn.

Compliments of
H. M. GROTH CO.
Nashville, Tenn.

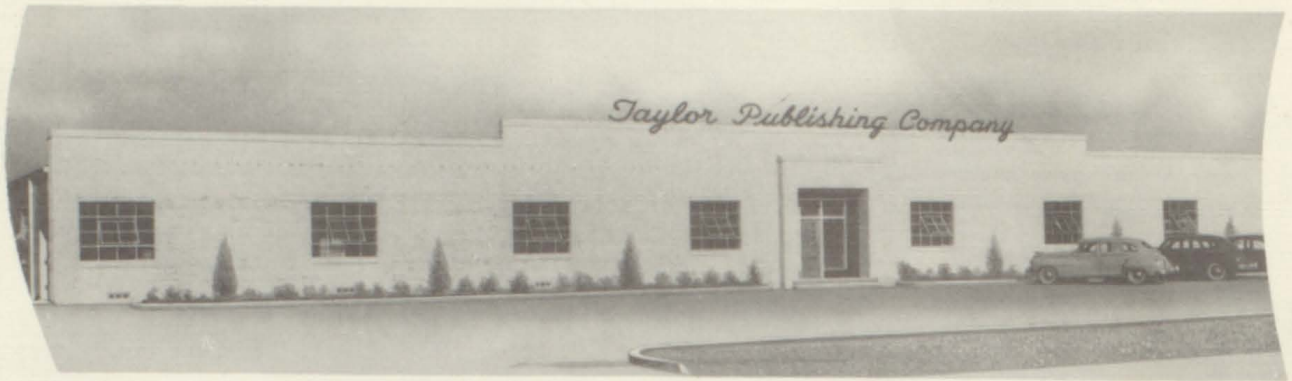
Compliments of
SWIFT ICE CREAM CO.

Greetings from
W. M. CLINE'S GROCERY
Corinth Community
Portland, Tenn.

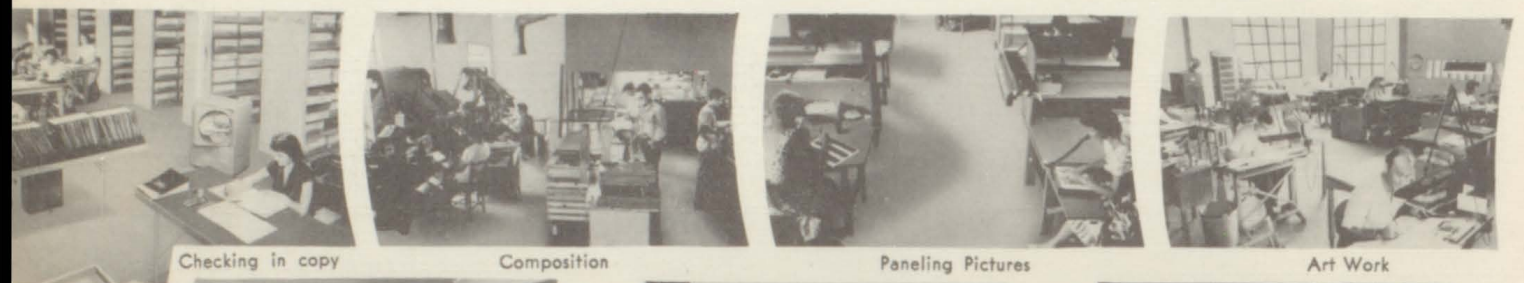
Compliments of
DR. PEPPER BOTTLING CO.
Nashville, Tenn.

Autographs

Taylor-made SCHOOL ANNUALS



SKILLED CRAFTSMEN — MODERN EQUIPMENT and 35,000 SQUARE FEET OF FLOOR AREA are combined to produce FINE SCHOOL ANNUALS for 1400 schools in twenty-three states

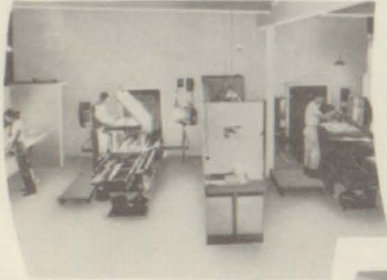


Checking in copy

Composition

Paneling Pictures

Art Work



Cameras



Masking



Plate Making



Printing



Gathering



Binding



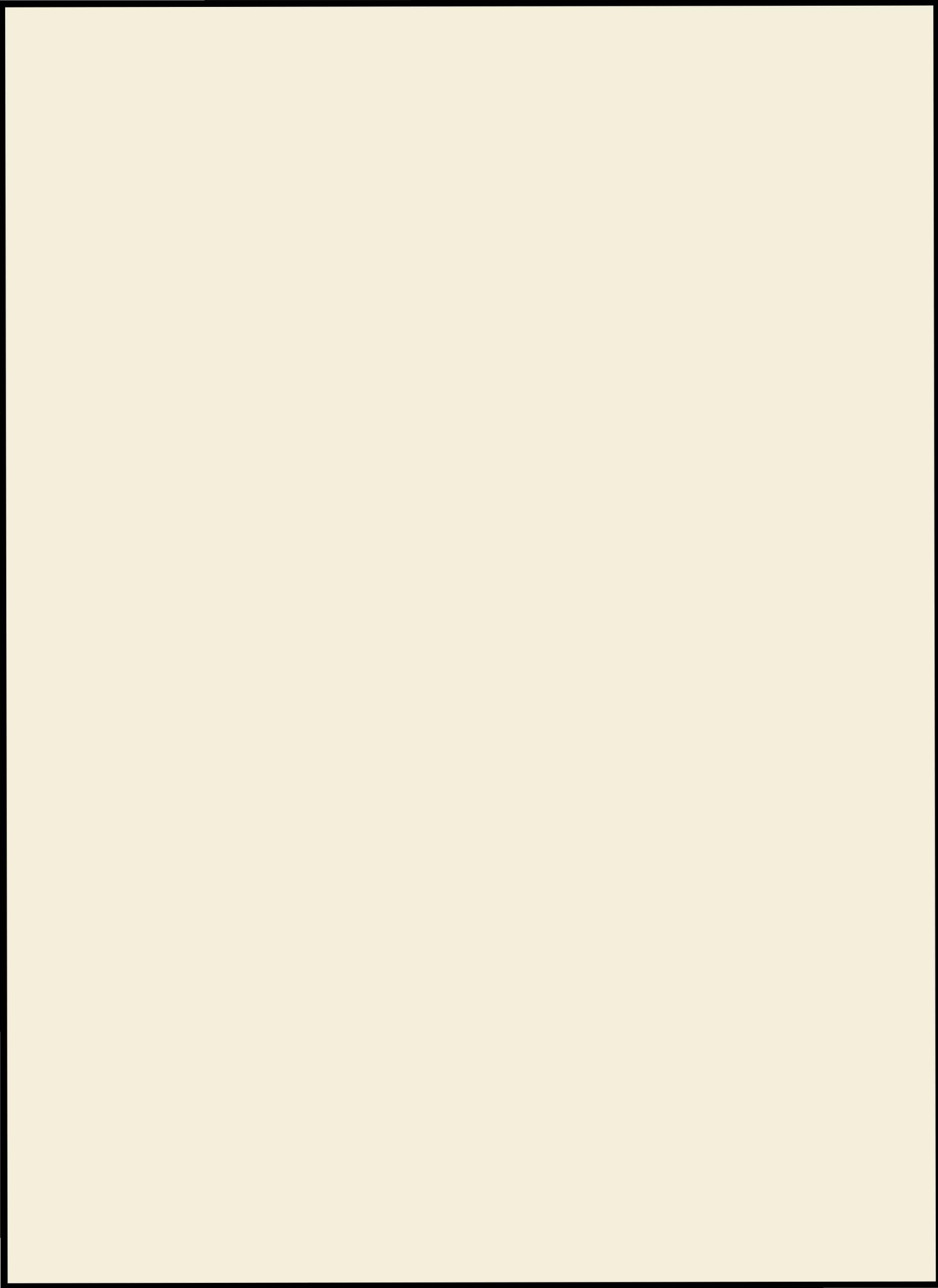
Inspection

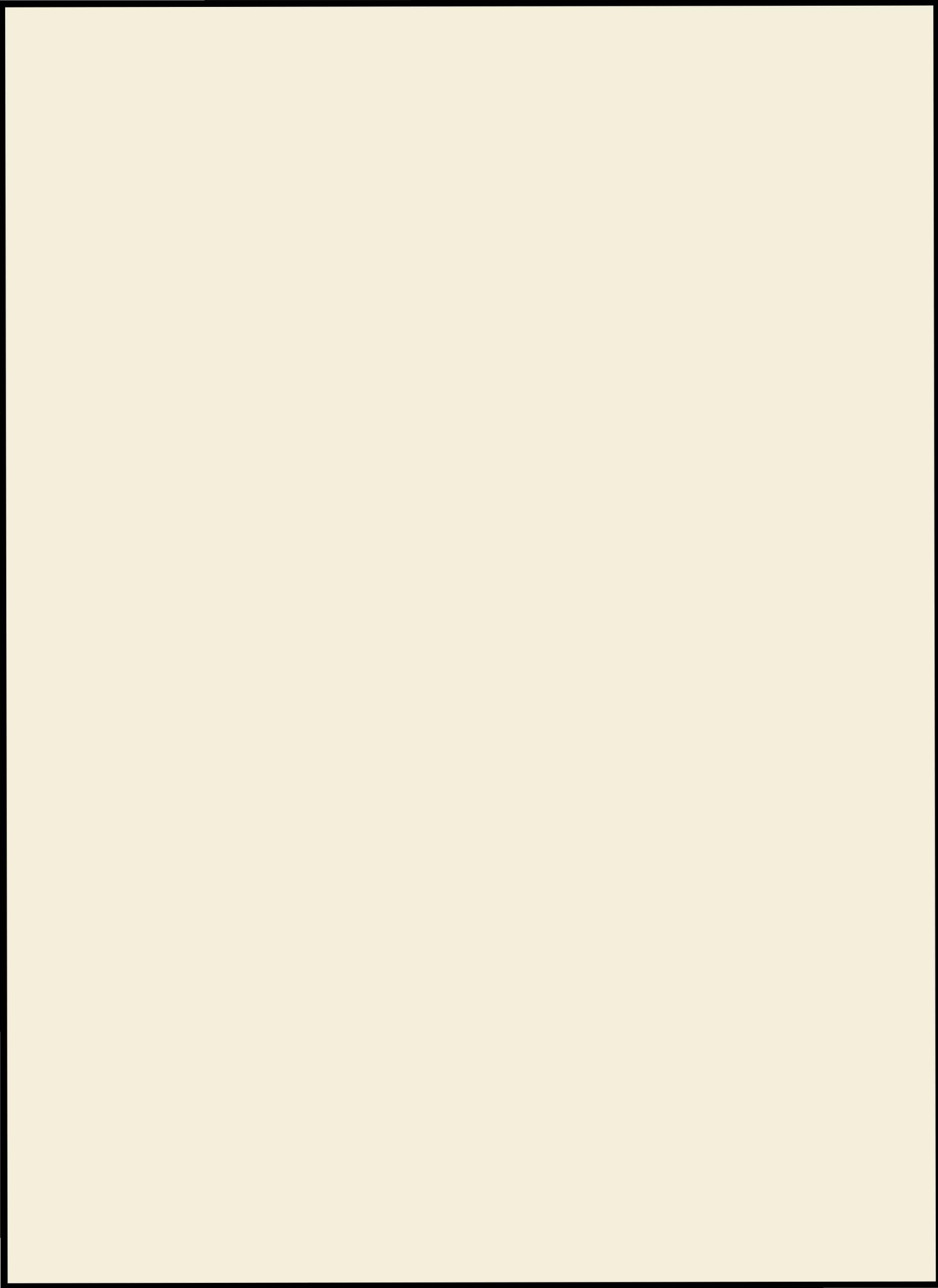
TAYLOR PUBLISHING COMPANY

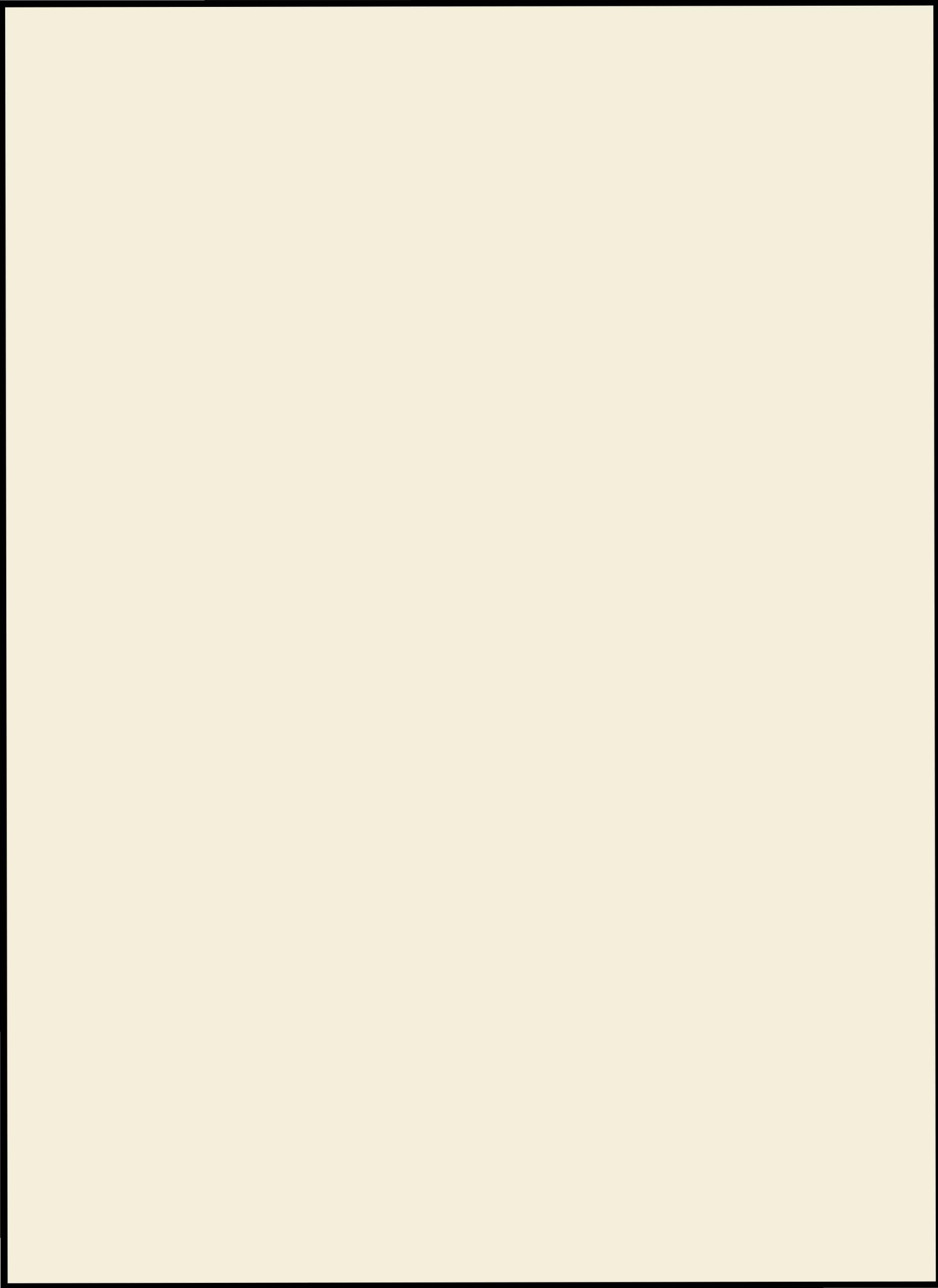
P. O. Box 597

DALLAS, TEXAS

6320 Denton Dr.













REPTILES

TAYLOR PUBL. CO.
— DALLAS —