



19 The Panther 53

By Russ Melvin
IF LEBANON expects to win tomorrow night's big battle with Portland, Coach Joe Atkinson is going to have to figure out a way to stop the "Touchdown Twins"—Glenn Glover and Bobby Neal.

In the last 13 games, Portland has been held to one touchdown just one time. The Panthers won that one anyway, 6 to 0. In the other 12 contests, Portland has tallied at least three touchdowns.

Last year Coach Atkinson figured out a way to beat Portland—match 'em touchdown for touchdown. And that's what the Blue Devils did, scoring first and then trading tallies the rest of the way. At the end, Lebanon was ahead 25-21 but Portland was down on the goal line ready to go over again as time ran out.

This year Lebanon has lost some valuable linemen and two of last year's starting backfield. But Fullback Clifton Tribble, the

man who outshone Neal and Glover in that one battle, and Quarterback David Robison are back to spark the attack.

In Portland's opening win over Murfreesboro, Glover scored four touchdowns as the Panthers romped 28-6. Last week Neal punched across three and Glenn one as Portland downed Nashville Central 26-7.

According to THE NASHVILLE TENNESSEAN Action Ratings, the Portland Purple Panthers are a slim one point choice over Lebanon in the top game of the week.

Sumner County Schools Join American Education Week

Schools all over the nation will celebrate American Education Week during the week of November 6.

Portland Panther Tied By 1300 School Graduates

A salute to the 1300 students are to participate in the 10th annual spring music festival of Middle Tennessee secondary schools, scheduled Thursday and Friday.

Sponsored by the Middle Tennessee Vocal association, this will be the first time the program has been held in Nashville.

Portland Cage Open Season Westmoreland

The Portland Cage team's 1952-53 season in the Portland Gymnasium Blue Devils deadlock 20-2 Westmoreland. There scheduled ending on Friday night on Memorial Field Coach Douglas McDonald. The Panthers, scoring a TD in each of the first three quarters, led Jimmy Wiseman, Jordan Lewis Callis. Two co-captain Harold Vaughn, scored three markers and two extra points.

Portland opened the scoring in the first period when Bobby Neal whipped over right guard after march of 65 yards with Neal at his "Touchdown Twin", Glenn Glover, alternating in carrying the ball. Neal then bucked over center for the extra point.

Glover Sparks Portland Win

PORTLAND, Tenn. — Halfback Glenn Glover led the Portland Panthers to their fourth triumph of the season here last night, a 7 victory over the Carthage Owls.

Glover raced 27 yards for the first touchdown in the first period and plowed over from the one in the second quarter after a Carthage scored their lone TD early in the third period on a 35 yard pass from Cook to Kenneth Hackett. This ended a 70 yard Owl march.

Player	Yards	TDs
Portland	348	4
Carthage	78	1
Total	426	5

Panthers Rout Hartsville 51-6 On Homecoming

SCHS News

The Senior Class wishes to take this opportunity to thank the people of Portland who gave them magazine subscriptions. The campaign closed with the Seniors making \$594.57. There is now about \$230 in the bank to be used for the Senior trip next spring. "Cath" Leath was the top salesman with \$101.25. Joyce Freeland and Frank Wilkes were second and third respectively, prizes of \$5, \$4 and \$2 were given.

The school was very proud of the football squad Friday night when they met Gallatin. The seniors are especially commended since this was their last game. The sportsmanship of the entire team could not have been better. The Beta Club is sponsoring a program to help failing students. Anyone who has an average of 90 or above is eligible to help. This program should help keep grades up and failures few, if any, advance is taken of it. Congratulations to Juanita Street whose essay "Goals in Life," appeared in the November issue of the Beta Club Journal.

The Portland Panthers chalked up their sixth win of the season last Friday night with a 51 to 6 win over Hartsville in their 1952 Homecoming game.

It was a gala homecoming for the Panthers with the alumni wearing white cards with purple and white ribbons and the crowning of the queen, Miss Joyce Freeland by the co-captains, Glover and Neal, at half-time.

Once again it was the Touchdown Twins, Glenn Glover and Bobby Neal, who led the Portland onslaught. Glover averaged 23 yards per run and Neal 14. Glover broke loose on three long touchdown runs of 30, 35 and 70 yards, and Neal tallied twice with runs of 16, and 4 yards.

Carl Pike, the Portland quarterback, scored once on a 40-yard run after picking up a Hartsville fumble. Bobby White caught a 10-yard pass from Glover to score once and Denning raced 30 yards to par-dirt on a reverse.

Portland FHA Observes FHA Week

National Farm Home Maker's Week is Nov. 2-8. The Portland FFA group began their observance of FHA week by attending the First Baptist Church in a group on Sunday, Nov. 2, and decorating the altar with flowers.

On Monday, the group decorated one of the windows at Young Drug Company, Tuesday the FHA had charge of the chapel program at S. C. H. S., on Wednesday each member of the faculty will be presented a rose, Thursday the group will have a spaghetti supper. Friday will be "No Gripe" day at S. C. H. S., under FHA direction.

Saturday the group will hold a bake sale to raise money for the various projects for the year.

1. Columbia	94.8
2. Isaac Litton	93.6
3. Shelbyville	92.2
4. Portland	88.0
5. Lebanon	87.9
6. Father Ryan	87.7
7. Du Pont	85.9
8. Murfreesboro	83.9
9. Cohn	83.0
10. Sparta	82.4
11. Clarksville	79.8
12. Nashville East	78.9
13. Cookeville	78.5
14. Springfield	78.4
15. Mount Pleasant	74.8
16. Manchester	74.6
17. Lynchburg	74.2
18. Carthage	74.0
19. Fayetteville	73.8
20. Franklin	73.7
21. Hillsboro	73.6
22. Huntland	73.5
23. Loretto	73.4
24. Franklin County	73.3
25. West	73.2
26. Goodlettsville	73.1
27. Howard	73.0
28. Tennessee Industrial	72.9
29. Dickson	72.8
30. Gallatin	72.7

P.T.A. Carnival To Be Saturday

The Portland Parent Teacher Association is planning their annual P.T.A. Carnival for Saturday, September 27 at the High School.

Ferguson Picked American Farmer

Harris E. Ferguson, 21, son of Mrs. E. L. Ferguson, Route 2, Portland, was honored at the Coach Douglas McDonald of Portland dropped me a card this week pointing out that Glenn Glover picked up 382 yards against Murfreesboro as he scored four touchdowns to lead his Panthers to a 28-6 victory.

Miss Ray Awarded Scholarship

Miss Patty Sue Ray, daughter of Mr. and Mrs. Fred Ray of Portland, is one of three young women from Tennessee who have been awarded scholarships by the Order of the Eastern Star to help finance their studies at Scarritt College this year. Each of these three is receiving \$200 from this fund.

Joan Link To Attend Annual ACP Meeting

Miss Joan Link, editor of the Oracle, student newspaper at Tennessee Polytechnic Institute, will represent that publication at the annual meeting of the Associated Collegiate Press in New York City Oct. 23-25, Guy Stewart, faculty adviser, announces.

Miss Link, daughter of Mr. and Mrs. Samuel Link of Mountain View, Tenn. — Miss Bettye Hunter, of Fountain

Portland Loses Doubleheader By 1 Point Margin

Portland lost a doubleheader football game to East Robertson Tuesday night by the heavy margin of one point. The East Robertson boys scored 53 and their sisters their game, 52 to 51. The next game will be Friday night at Hendersonville.

The Portland Quintet defeated the boys of Westmoreland 16 to 26 in a game held in Hendersonville and gym on Friday night. The score for the night was Harold Vaughn with 26 points. The members of the girls' team won by a goal margin with the final score 18 to 8.

Portland (46) Westmoreland (26)
 Portland (46) Westmoreland (26)
 Portland (46) Westmoreland (26)

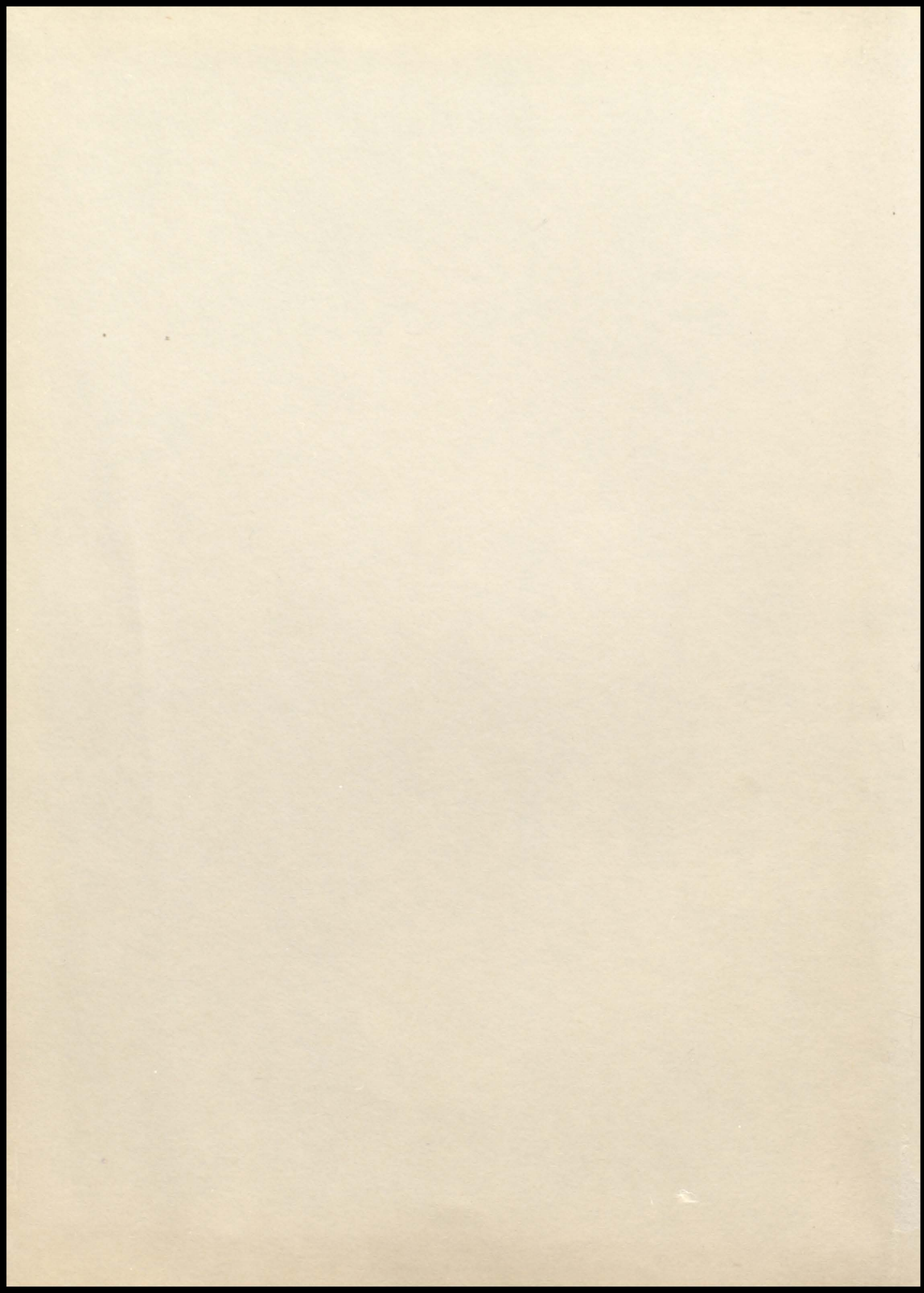
Portland (34) Westmoreland (26)
 Portland (34) Westmoreland (26)
 Portland (34) Westmoreland (26)

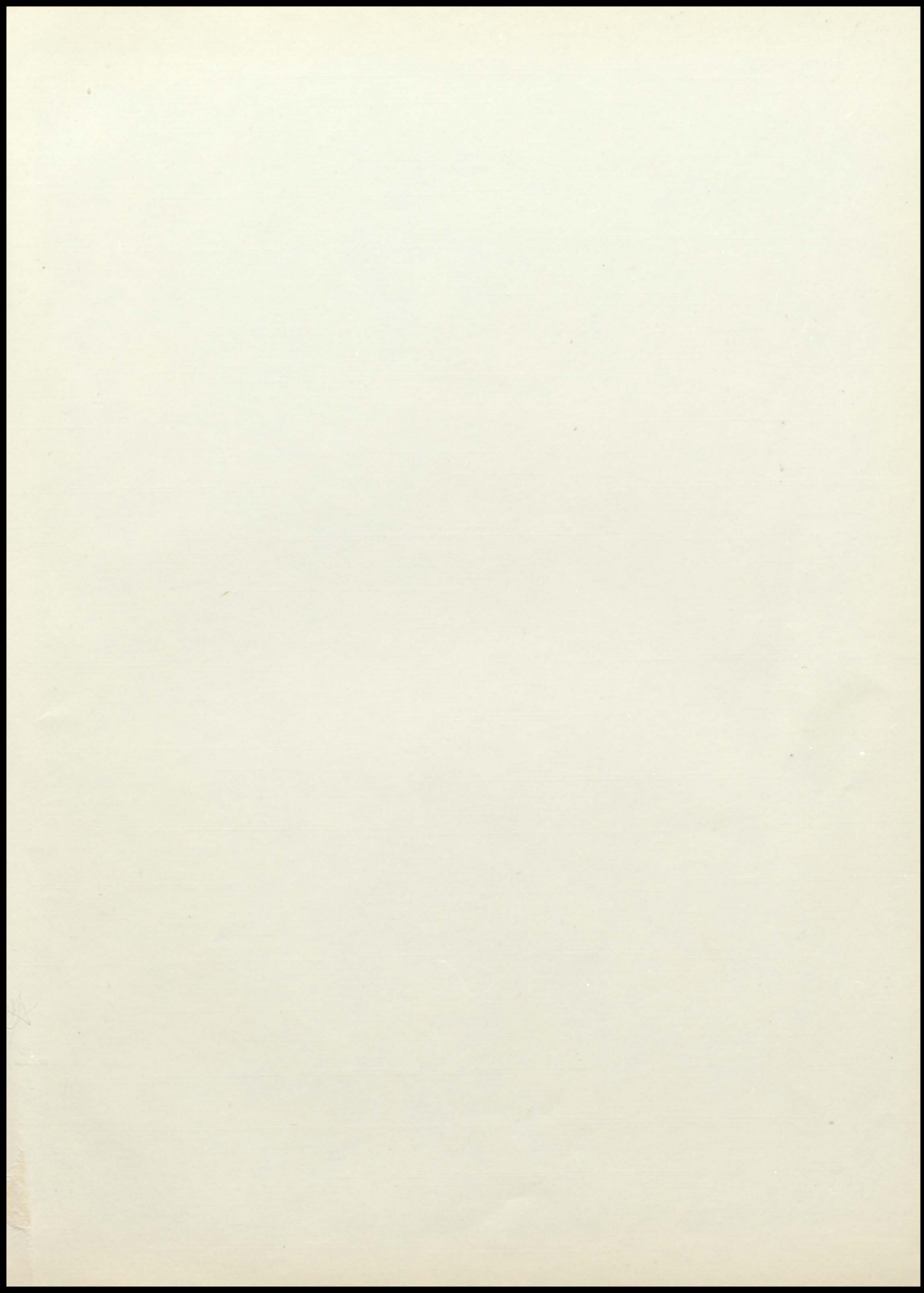
Glover Gets Portland Stars

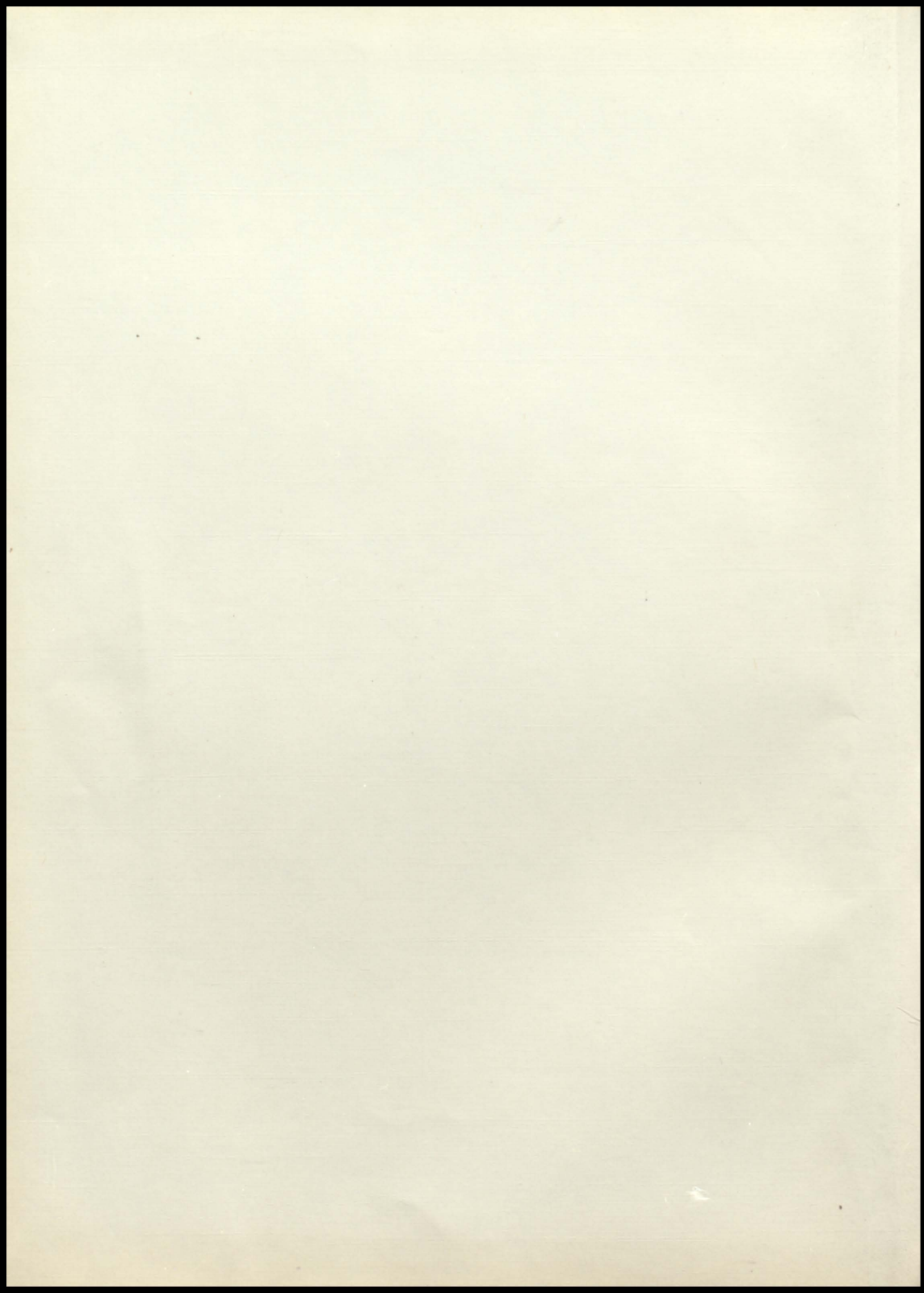
Glenn Glover and Bobby Neal, two of the outstanding backs of Middle Tennessee, yesterday signed grants-in-aid with Vanderbilt University.

The signing of Glover came as a big surprise to many people because as late as Saturday night it was reported he was headed for Tennessee.

Glover was named to THE TENNESSEAN All-Midstate team for two straight years, both times being named honorary captain for having the most votes from the coaches. Besides being a great offensive threat, the Portland high athlete also backs up the line and is considered one of the finest defensive players in the area. Neal and Glover teamed for five years to give Portland the







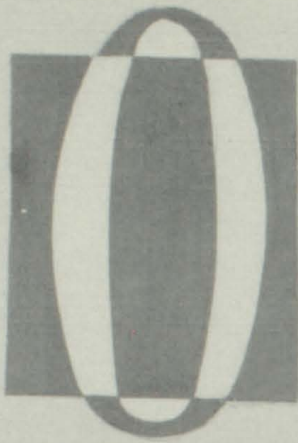
**THE
PANTHER
1953**



Published by the
BETA CLUB
of

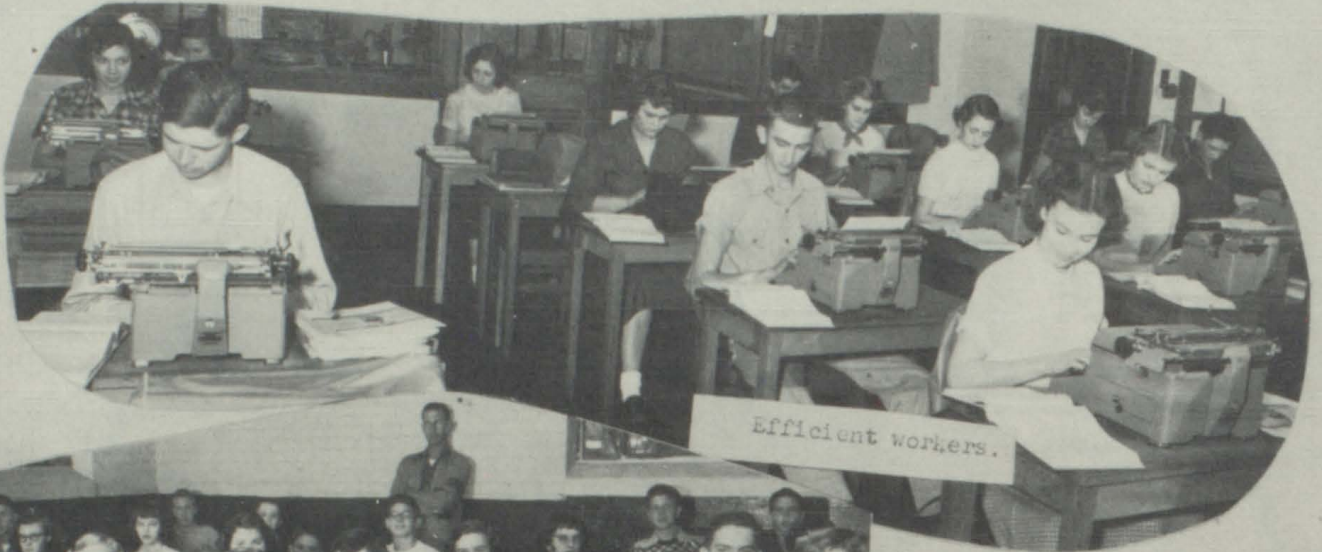
Sumner County High School

We move



NWARD

*to seek an education which will
prepare us for the challenge
awaiting the citizens of tomorrow*



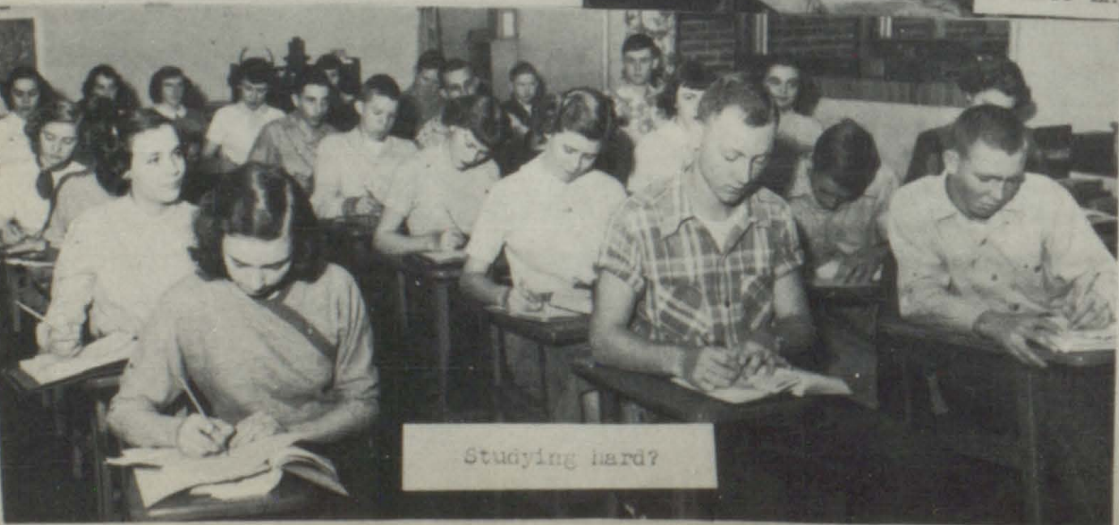
Efficient workers.



General Science



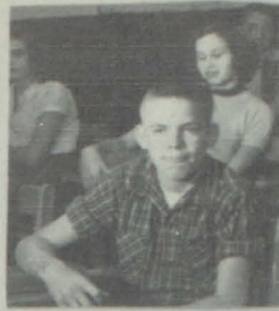
Junior English



Studying hard?



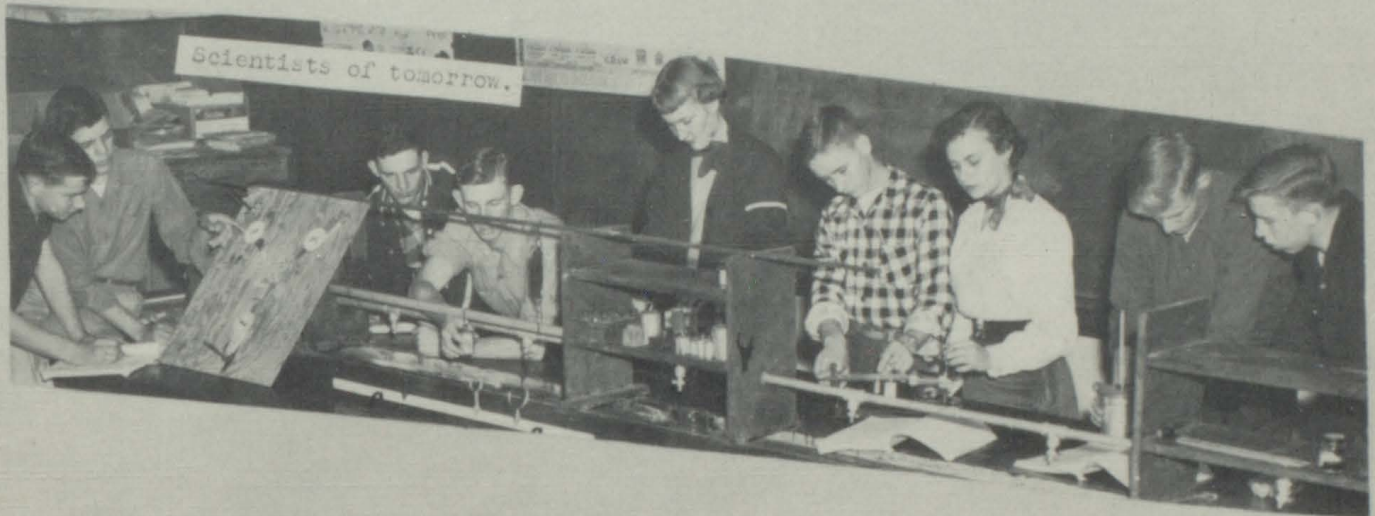
New members.



Seven -- come eleven !!



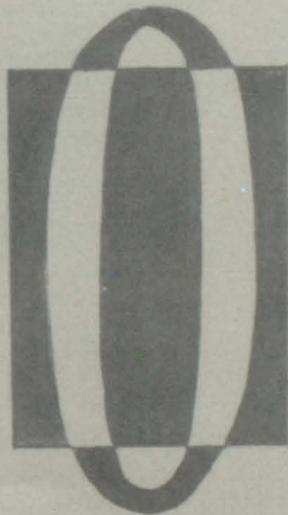
That's our boys !!



Scientists of tomorrow.



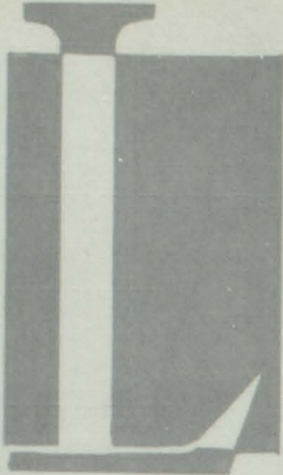
With



OPPORTUNITY...

*to build a sound mind
and body through a well-
rounded program designed
to enrich ourselves
intellectually and
morally*

For



LEADERSHIP...

training in organizations and civic activities - leadership which will equip us to guide the community, the state and the nation into progressive channels



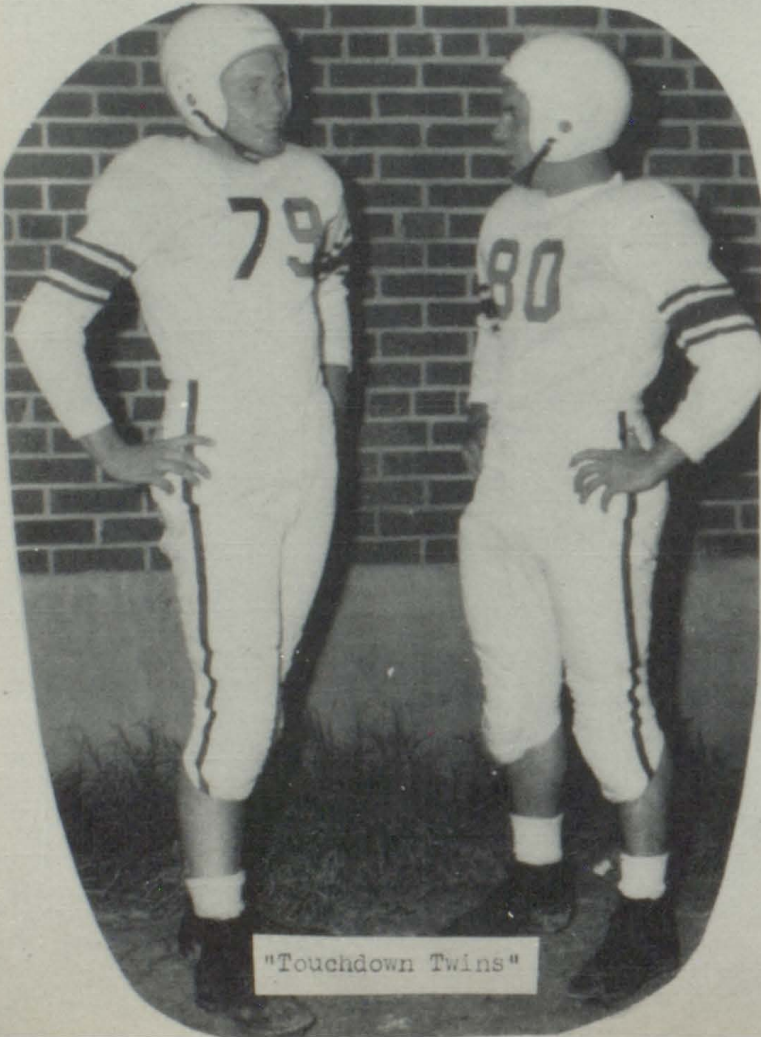
They score again!



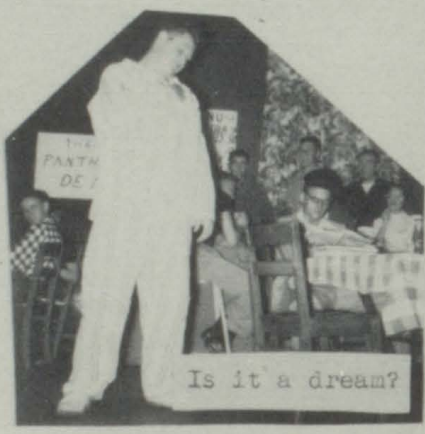
Patrol boys, we are proud of you!



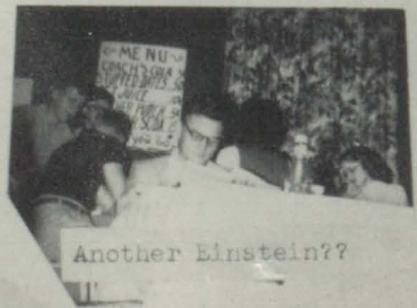
What is it???



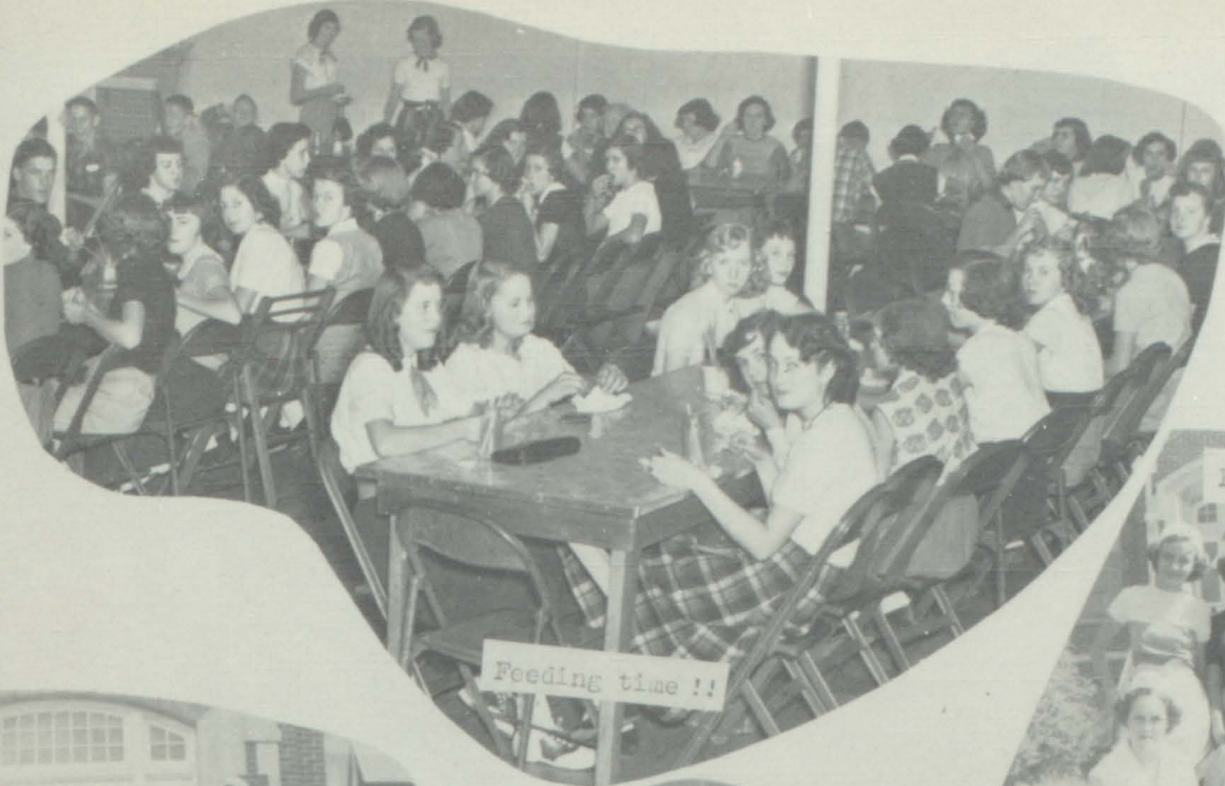
"Touchdown Twins"



Is it a dream?



Another Einstein??



At **P**

ORTLAND..

our beloved alma mater, steeped in thirty seven years of tradition, where we entertain serious moods during hours of study and carefree spirits during periods of relaxation

Foreword



Mary E. Webb, Assistant; Yvonne Cummings, Editor; Juanita Street, Business Manager; Mrs. Hunnicut, Sponsor.

The sound of happy voices, the spirit of good sports, the molding of ideals and aspirations all blend into our high school experiences.

This book has caught glimpses here and there, so that in years to come the activities of this school year at SCHS will not be dimmed and will not fade from memory.

With these thoughts in mind, the staff presents THE 1953 PANTHER.

Dedication



MR. WILLIAM H. HUNTER, B.S., M.A.
Superintendent of the Portland Schools

It is with sincere admiration and appreciation that we dedicate this, the 1953 edition of **THE PANTHER** and fears, and aims have been one — that every student become the ideal citizen.

Faculty



LAWRENCE
BRADLEY, B.S.
Math, Science



ROBERT
DAWSON, B.S., M.A.
Mathematics



W. A.
DORRIS, B.S.
Agriculture



MRS. DUNCAN
EMPSON, A.B.
Library



FLORENCE
HUNNICUTT, A.B., M.A.
English



MRS. WILLIAM
HUNTER, B.S.
Commercial



MAXINE
JENKINS, B.S.
Home Economics



MRS. EARL
JERNIGAN, B.S.
Social Science



CAROLYN
KERLEY, B.A., M.A.
Dramatics



DOUGLAS
McDONALD, M.A., B.S.
Coach, Science



MRS. A. W.
MISNICK, B.S.
Social Science, English



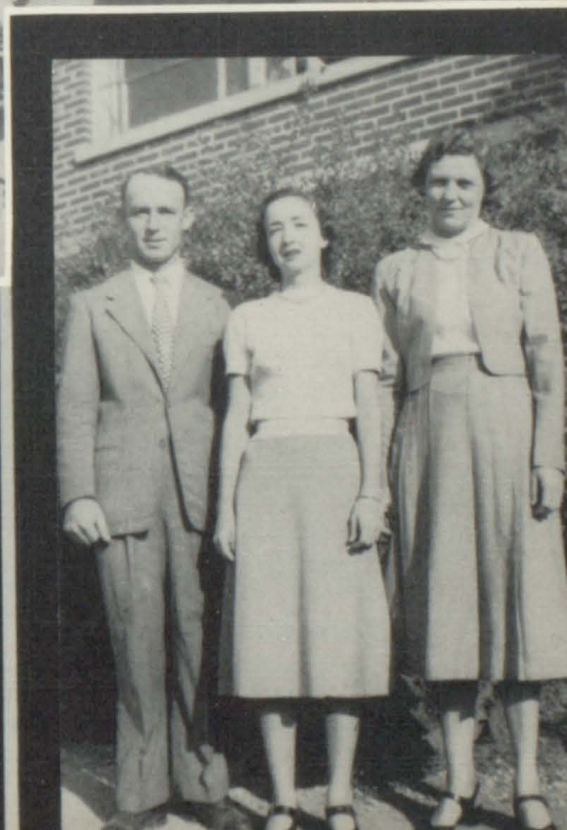
MRS. O. M.
MOORE, A.B.
Languages, Mathematics



GORDON
RICKETTS, B.A.
Physical Education



MRS. JOE
WISEMAN
Secretary



SENIOR CLASS OFFICERS

PERRY HARPER.....	<i>President</i>
JIMMY JOHNSON.....	<i>Vice President</i>
FRANCES FERGUSON.....	<i>Secretary</i>
YVONNE CUMMINGS.....	<i>Treasurer</i>
MARY ELLEN WILLIAMS.....	<i>Reporter</i>



CLARICE ADAMS

COMMERCIAL

*Clarice is intelligent
And talented too;
She will never give up
Until her work is through.*

FHA Club 1, 3; Class tournament 3; Paper Staff 4.

JANE BELL

COMMERCIAL

*Jane is tall
And a friend who's true
But that's not all
She's pretty too.*

Glee Club 1, 2; Language Club 2; FHA Club 2; Dramatic Club 4; Science Club 4.



DORIS BROWN

SCIENCE

*Doris is a girl
So nice and sweet
And she is never found
Sitting on the basketball seat.*

Science Club 1, 2, 3; Paper Staff 3; Basketball 1, 2, 3, 4; Co-captain 3; Alt-captain 4; Glee Club 1, 2; FHA 1; Beta Club 2, 3, 4; Language Club 2; Dramatic Club 4.

MARIE BROWN

HOME ECONOMICS

*A quiet girl is sweet Marie
Always smiling at you and me.
She is very good in every way,
And will help a friend out any day.*

FHA 1, 2, 3, 4.

RHEA CHANDLER

FFA

*Rhea is bashful
But kind to all,
Willing to help
Whenever you call.*

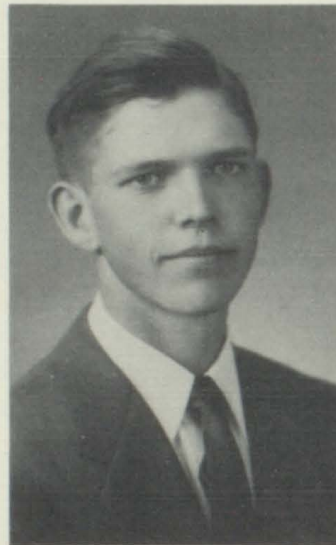
Agriculture 1, 2, 3, 4; Judging Team 3.

LAURA RUTH CLAIBORNE

SCIENCE

*Take some intelligence
Add a little truth
Mix it up together
And you get Laura Ruth.*

Salutatorian; Glee Club 1, 2, 3; Beta Club 2, 3, 4; Class Tournament 1, 3; Paper Staff 3; FHA 1.



DONALD COLLINS

AGRICULTURE

*Always fun to be with
Always full of joy,
Take things all the way around
Donald is a very nice boy.*

Football 2, 3, 4; Paper Staff 4; Agriculture 1, 2, 3.

JAMES COLLINS

MATHEMATICS

*Jim is a very handsome lad
Sometimes good, sometimes bad;
Always jolly as can be
When spoken to, asks "Who, me?"*

Dramatics Club 1, 3; Football 1, 2, 3, 4; FFA 1, 2, 3; Science Club 1; Letter Club 2, 3, 4.



JEAN COOK

HOME ECONOMICS

*Jean is jolly, good, and gay
Never bashful when there's something to say,
And when you're in need of a friend
Jean is with you to the end.*

FHA 1, 2, 3; NFL 1, 2, 3, 4; Thespian 1, 2, 3, 4; Glee Club 1, 2, 3, 4; Vice President 4; Dramatic Club 4; Paper Staff 1, 3, 4; Joke Editor 4; Commercial Club 3, 4; Music 1, 3, 4; Reading Contest 1, 2, 3; CVC Contest 1, 2, 3; Class tournament 1; Music Festival 2, 3.

JOHN P. CRAFTON

AGRICULTURE

*J. P. is big
And somewhat shy
But always a friend
When trouble comes by.*

FFA 1, 2, 3, 4.



YVONNE CUMMINGS

SCIENCE

*Yvonne is intelligent
And likely to succeed
She is willing to help
Anyone who is in need.*

Valedictorian; Science Club 1, 2, 3, 4; Glee Club 2, 3, 4; FHA 1; Dramatic Club 4; Student Council 2; Class Secretary 1; Treasurer 4; Annual Staff 4; Paper Staff 3, 4; Most Outstanding Girl 1; Language Club 2; DAR Representative

JUNE DEASY

COMMERCIAL

*June is short
and rather little
But she does her work
and doesn't piddle.*

Glee Club 1, 2, 3, 4; FHA 1, 3; Debate Team 2, 3, 4; Language Club 2; Paper Staff 3; Football Queen Attendant 2, 4; Dramatic Club 4.



HAROLD DENNING

SCIENCE

*Football is
Harold's main sport,
And when it comes to girls
He's always ready to court.*

Science Club 1, 2, 3, 4; Football 2, 3, 4; School patrol 1, 2; Class tournament 1, 2, 3, 4.

BETTY DEVASHER

COMMERCIAL

*Betty's a nice girl
To have around
She's one of the best friends
To ever be found.*

Science Club 3, 4; FHA 1, 2, 3; Band 1, 2; Dramatic Club 4.

KENNETH DORRIS

MATHEMATICS

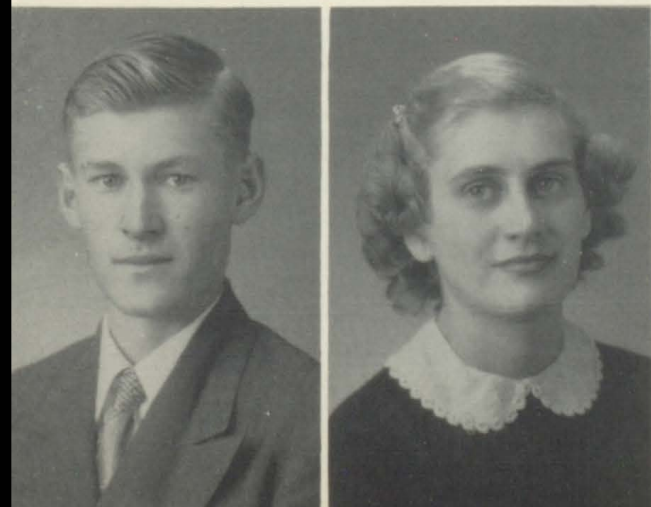
*Every time you see him
He is a happy lad.
No matter what you say to him,
You can never make him mad.*
Science Club 1, 2, 3.

MARY FRANCES FERGUSON

SOCIAL STUDIES

*Mary Frances is a girl
Both kind and smart
She is the kind of girl
That wins your heart.*

Science Club 1, 3, 4; Treasurer 4; FHA 1, 2, 3, 4; Treasurer 4; FHA Convention Delegate 3; Workshop Delegate 4; Press Club 3; Business Manager School Paper 4; Glee Club 2, 4; Secretary-Treasurer 4; Class Secretary 4.





BILLY FREELAND

AGRICULTURE

*Billy is known
In doing a good deed.
And he is a boy
Who is likely to succeed.*

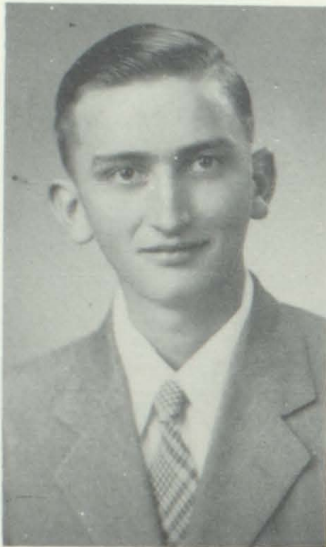
FFA 1, 2, 3, 4; Treasurer 4; Basketball 2; Class Tournament 1, 3, 4; Paper Staff 4.

JOYCE FREELAND

COMMERCIAL

*Joyce is a girl
Who has plenty of brains
Her work may come hard
But she never complains.*

Paper Staff 3, 4; NFL 1, 2, 3, 4; Thespian 1, 2, 3, 4; FHA 1, 2, 3; Secretary 3; Class President 1; Treasurer 3; Glee Club 1, 2, 3, 4; President 4; Beta Club 2, 3, 4; Letter Club 2; Dramatic Club 4; Cheerleader 2, 3, 4; Captain 3, 4; Music Contest 2; Basketball 2, 3, 4; Class Tournament 1; Football Queen Attendant 3; Football Queen 4; Miss SCHS 4.



EUGENE GARRETT

AGRICULTURE

*A friend of everyone is Eugene
He sure isn't fat, nor is he lean,
A better friend than he, we'll never know.
For Eugene has never had a foe.*

FFA 1, 2, 3, 4; Parliamentary procedure contest 4.

GLENN GLOVER

MATHEMATICS

*Glenn is really quite a guy.
The girls all sigh as he walks by.
The winner on our football team.
Boy, he's really on the beam!*

Football 1, 2, 3, 4; Co-captain 4; Basketball 1, 2; Track 1, 2; Letter Club 1, 2; All Mid-State 3, 4; Captain 4; All State 4; All CVC 2, 3, 4; Most Outstanding Boy 1, 2; FFA 1, 2, 3; Most Valuable Football Player 3; Bachelor of Ugliness.

WAYNE GREGORY

AGRICULTURE

*He may not speak his opinion,
And sometimes silence is best.
He had rather just be quiet
And listen to all the rest.*

FFA 1, 2, 3, 4; Basketball 3, 4; Science Club 3; Class Tournament 1, 2, 3.

BARBARA GROVES

COMMERCIAL

*Barbara is a girl
Who is rather small
But when it comes to friends,
She is a friend to all.*

Class Reporter 2, 3; Commercial Club 3; FHA 1, 2, 3, 4; Vice President 3; Secretary 4; Parks Sub. Dist. Photographer 3; Dramatic Club 4.



PERRY HARPER

MATHEMATICS

*A good class leader is Perry
I know everyone will agree.
He's happy when making friends,
So a sweet-smiling lad is he.*

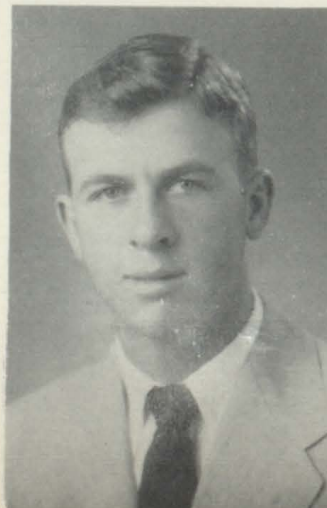
Class President 3, 4; Football 1, 2, 3, 4; Basketball 2, 3, 4; Glee Club 2; FFA 1, 2, 3; Letter Club 2, 3, 4; Dramatics Club 1, 4; Science Club 1, 2.

JOAN HARRIS

SOCIAL STUDIES

*Joan is a very nice girl
On the basketball floor she is a whirl;
And in her books she does fine
Yet she is friendly all the time.*

FHA 1, 2, 3; Glee Club 2, 3; CVC Conference 2, 3; Basketball 1, 2, 3, 4; Captain 4; Office Asst. 2, 3; Purple Herald Staff 3; Commercial Club 3; Letter Club 2.

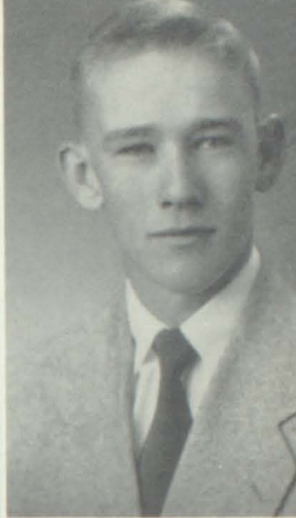
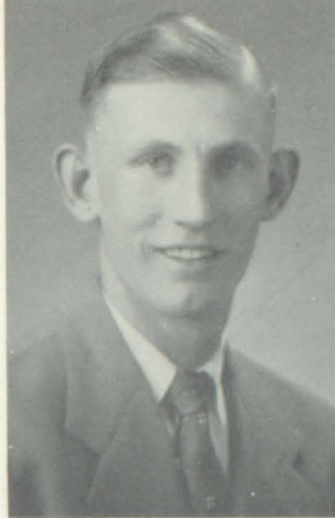


RAY HODGES

AGRICULTURE

*Ray is a very likeable boy,
Who makes it his job
To spread cheer and joy.*

FFA 1, 2, 3, 4; President 4; Football 2, 3, 4; Dramatic Club Treasurer 4.



JIMMY JOHNSON

AGRICULTURE

*Jimmy is very cute
And mischievous too.
He always has a smile
And kind words for you.*

Football Manager 2, 3, 4; Basketball Manager 2, 3, 4; Vice President of Class 1, 4; FFA 1, 2, 3, 4; Vice President 4; Letter Club 2, 3; Dramatic Club 4; President 4; Parliamentary Procedure team 4.

DAVID JONES

AGRICULTURE

*David always has a smile
For every friend he meets;
But when it comes to football manager,
He can't be beat.*

FFA 1, 2, 3, 4; Reporter Science Club 3, 4; Dramatic Club 4.

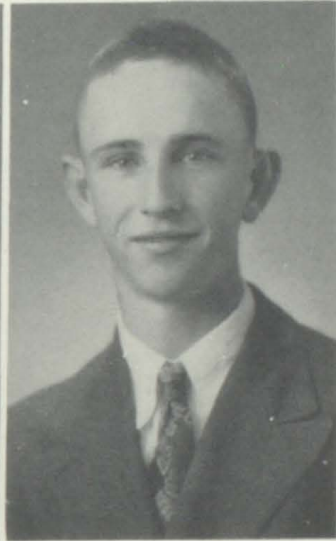


MAGDALENE KEENE

COMMERCIAL

*Magdalene is bashful
But always full of glee
She is always tittering
At you and me.*

FHA 1, 2, 3, 4; Paper Staff 2; Dramatic Club 4.



VIRGINIA KEPLEY

COMMERCIAL

*Virginia is always attractive
And in her work she is active.
With Virginia, so they say,
To be a friend will surely pay.*

FHA 1, 2, 3, 4; Commercial Club 3; Dramatic Club 4; FHA Officer 4; Music 1, 2, 3, 4.

DAVID KIRKHAM

MATHEMATICS

*David is a boy
With a head full of sense.
And when it comes to girls,
He is ready at any expense.*

Glee Club 1, 2, 3; FFA 1, 2, 3, 4; National Convention Delegate 4; Reporter 4; Parks Sub-District 1, 2, 3; School Patrol 3.

JAMES LEATH

AGRICULTURE

*"Catfish" is a boy
With strength so rare.
He plays football
And plays it fair.*

Football 1, 2, 3, 4; All Mid-State 3; FFA 1, 2, 3, 4; Secretary 4; Dramatics Club 4; Letter Club 2; Paper Staff 4.

BEATRICE LONG

COMMERCIAL

*Beatrice is a girl
Who is always gay and glad.
And her jolly giggle
Keeps you from feeling sad.*

FHA 1, 2, 3; Officer 3; Glee Club 1, 2, 3, 4; Music Contest 2, 3, 4; Vocal Quartet 2, 3; Dramatic Club 4; Paper Staff 3.



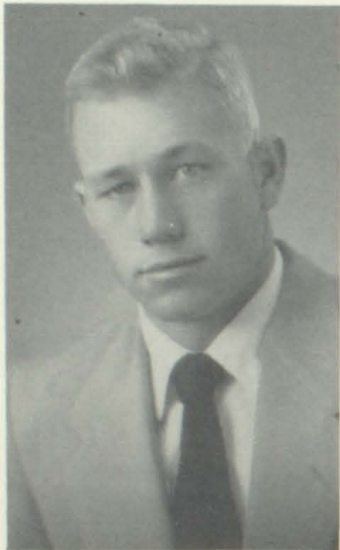


FLORENCE MCCLLOUD, *COMMERCIAL*
Florence is always laughing
Happy, sparkling, and gay.
She has a smile for everyone
Whom she meets along the way.

FHA 1, 2, 3, 4; Science Club 3, 4; Commercial Club 3;
 Glee Club 2, 4.

EDNA MCCORMACK *COMMERCIAL*
Edna is a girl
Ever full of fun.
But when it comes to work,
She always gets it done.

Science Club 1, 2; Glee Club 1, 4; FHA 1, 2; Officer 2;
 Convention Delegate 1; Commercial Club 3; Beta Club
 2, 3, 4; Class Tournament 1, 2, 3; Extemporaneous Speaking
 Contest 3.



BOBBY NEAL *MATHEMATICS*
"Touchdown Twin" Bobby
Of whom you hear tell,
Is a handsome young fellow
Who plays football quite well!

Football 1, 2, 3, 4; Co-captain 4; Basketball 1, 2, 3;
 Student Council 3; Student Body President 4; CVC
 Contest 3; FFA 1, 2.

JUANITA WALLACE *COMMERCIAL*
Her kindness and love
Are as beautiful as she.
Loved and remembered forever
Juanita will be.

FHA 1, 2, 3; Officer 2, 3; Beta Club 2, 3, 4; Science
 Club 2, 3; Letter Club 2; Glee Club 1; Band 1;
 Commercial Club 2, 3; Office Asst. 4; Cheer Leader
 2, 3; Football Queen Attendant 2, 4; Most Out-
 standing Girl 2; Basketball Manager 4; Dramatics
 Club 4; Class Tournament 1, 2, 3.

PAULINE S. PAUL *PHYSICAL SCIENCE*
Sue is smart
As everyone knows.
She always looks neat
From her head to her toes.
 Glee Club 3; Dramatic Club 4.

MARGARET DEAN PARKER *HOME ECONOMICS*
Margaret is very sweet.
She never hurries.
But when she goes to English
She just worries, worries, worries.
 FHA 1, 2, 3, 4; Officer 4; Dramatic Club 4.

MINNIE LOU PERDUE *COMMERCIAL*
Patience is the remedy
For every trouble.
For this young lady,
The saying goes double.
 FHA 1, 2, 4; Dramatic Club 4; Glee Club 1.

HAROLD RAGAN *SOCIAL SCIENCE*
Harold Wayne is just the tops,
The things he does are never flops.
He'll never frown, he'll always grin;
He'll never cheat, he'll always win.
 Science Club 1, 2, 3; Dramatic Club 4; Glee Club 2, 3;
 Band 3.

ALICE SHIRRELL *COMMERCIAL*
Alice is so kind and sweet
And everyone she'll always greet
She has all friends and not a foe.
So "Love you all" is her motto.
 Science Club 1; FHA 1, 2, 3, 4; Dramatic Club 1.



JUANITA STREET

MATHEMATICS

Juanita always does her best
When there's work to be done,
And it seems as if she thinks
Two heads are better than one.

FHA 1, 4; Basketball 2, 3; Class Tournament 1, 4; Student Council 3; Beta Club 3, 4; Science Club 1, 2; Paper Staff 4; Outstanding Girl 4; Annual Staff 4.

MARY E. WEBB

SCIENCE

Mary Elizabeth is a fast thinker
Determined and efficient too.
If the first is not success
She'll try till she comes through.

Beta Club 2, 3, 4; Science Club 2, 3, 4; Language Club 2; Paper Staff 4; Dramatic Club 4; Basketball Manager 3; Annual Staff 4; Class Tournament 2, 3.



LORENE WILLIAMS

COMMERCIAL

A girl that is kind
Friendly, pretty and sweet
Describes our Lorene
Who is a pleasure to meet!

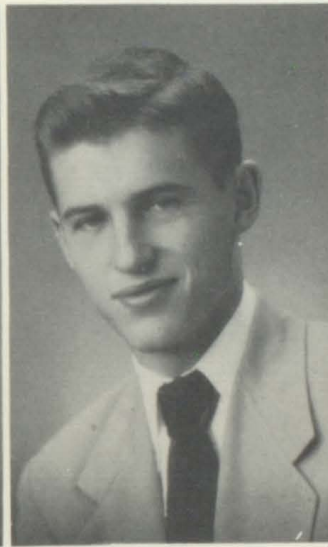
Class Reporter 1; Vice President 2; Secretary 3; Glee Club 1, 2; FHA 1, 2, 3; Tennessee Convention Delegate 1; Secretary 2; President 3; Press Club 3; Reporter 3; Purple Herald Staff 1; Class Tournament 2, 3, 4; FFA Queen Attendant 2; FHA Varsity Visit to UT 3; Varsity Coed for Day at UT 3; Student Council 4; Class Editor of Paper Staff 4; Dramatics Club 4; Science Club 4.

MARY ELLEN WILLIAMS

COMMERCIAL

A fine little gal we know
Who's helpful in our joy and woe.
She's very nice, cheerful, and kind.
A girl like this is hard to find.

Home Economic Club 1, 2; Beta Club 2, 3, 4; Business Manager, Press Club 3; Paper Staff 4; Football Queen Attendant 3; Dramatic Club 4; Vice President 3; Class Reporter 4; Beta Club Secretary 4; Class Tournament 2, 3.



CHARLES WILLIAMS

AGRICULTURE

Charlie is a wonderful guy
Whose like you'll not often meet.
Really you might think he's shy
But with a smile each one he'll greet.

FFA 1, 2, 3; Social Science 2, 3, 4; FFA Officer 3; Class Tournament 1, 2, 3; FFA. Camp 2.

FRANK WILKES

MATHEMATICS

You know when he is near
For he spreads joy and cheer.
But it wouldn't be our Frank
Without a jolly prank.

Science Club 1, 3, 4; Glee Club 1, 2; Dramatics Club 4; NFL 2; 3, 4; Thespian Society 2, 3, 4; Football 2, 3; Class Tournament 1, 2, 3.

BOBBY WHITE

AGRICULTURE

Bobby White or "Whizzer,"
As called by all,
Showed that he deserved that name
When he played football.

FFA 1, 2, 3, 4; Officer 4; Football 1, 2, 3, 4; Letter Club 2.

JACKIE WHITE

SOCIAL SCIENCE

Though loud and petite
Jackie is surely sweet.
A better friend than he
No one could ever be.

Science Club 2; Glee Club 2; Dramatic Club 4.

JANE WILLIAMS

HOME ECONOMICS

Jane is a girl
Who seldom says a word
But when lessons aren't done
Her name's never heard.

FHA 1, 2, 3, 4.



Class poems

TWO CHAPTERS

Mary Ellen Williams

*The final page is now complete
And the pen is laid aside.
One chapter of life is closed for aye
What ever else betide.
We slowly turn the pages back
To muse the days we've passed,
To stamp their memories on the heart
As long as life shall last.
But other chapters are in store;
There's more than history.
So with trembling hands we take the pen;
What will the future be?
The answer comes in accents clear:
If labors do not cease,
If hearts are true, and aims are one
You'll write a masterpiece.*

A
B
C

D
E
F

G
H
I



Athletic
DORIS BROWN
GLENN GLOVER



Bashful
MAGDALENE KEENE
RHEA CHANDLER



Cute
JUNE DEASY
JIMMY JOHNSON



Deserving
JUANITA STREET
BILLY FREELAND



Energetic
JOAN HARRIS
HAROLD DENNING



Friendly
MINNIE LOU PERDUE
RAY HODGES



Graceful
JUANITA WALLACE
LORENE WILLIAMS



Handsome
FRANK WILKES
JAMES COLLINS



Intelligent
YVONNE CUMMINGS
LAURA RUTH CLAIBORNE

J
K
L

M
N
O

P
Q
R



Jubilant
BEATRICE LONG
JAMES LEATH



Kind
BETTY DEVASHER
MARIE BROWN



Likable
EUGENE GARRETT
BOBBY WHITE



Mischievous
HAROLD RAGAN
JACKIE WHITE



Neat
BARBARA GROVES
VIRGINIA KEPLEY



Original
WAYNE GREGORY
ALICE SHERRILL



Popular
JOYCE FREELAND
BOBBY NEAL



Quiet
JANE WILLIAMS
JOHN PAUL CRAFTON



Romantic
EDNA McCORMACK
PERRY HARPER

S

T

U

V

W

X

Y

Z



Sophisticated
SUE PAUL
JANE BELL



Talented
JEAN COOK
DAVID JONES



Unusual
DONALD COLLINS
MARGARET D. PARKER



Versatile
MARY F. FERGUSON



Witty
CHARLES WILLIAMS
FLORENCE McCLOUD



X-Executive
MARY ELLEN WILLIAMS



Youthful
DAVID KIRKHAM
KENNETH DORRIS



Zealous
CLARICE ADAMS
MARY E. WEBB

WHO'S WHO



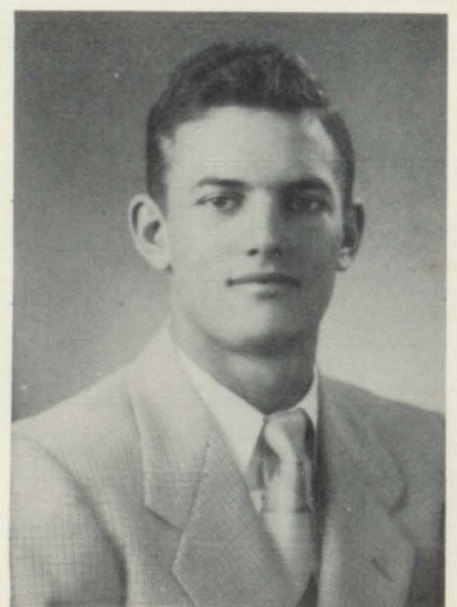
YVONNE CUMMINGS
Valedictorian
D. A. R. Representative



LAURA RUTH CLAIBORNE
Salutatorian



JOYCE FREELAND
Miss S. C. H. S.



GLENN GLOVER
Bachelor of Ugliness

Last Will and Testament

We, the 1953 GRADUATING CLASS of S. C. H. S., being of sound mind and memory, do hereby make and declare this to be our last will and testament, hereby making void all our former statements and declarations.

To Mr. Hurnter and the faculty, we leave our deepest gratitude and sincere appreciation for their helpfulness through the years.

To the Junior Class, we leave our skill on "How to Get Out of Class."

To the Sophomore Class, we leave our hopes that they will make it through the last half!

To the Freshman Class, we leave a new outlook on life—the outlook of a sophomore.

The individuals of the class leave the following:

I, Harold Ragan, leave with much surprise!

I, Jackie White, leave my mischievousness to Jimmy Phillips, as if he needed it!!

We, Glenn Glover and Bobby Neal, leave our ability to play football to the future teams of S. C. H. S.

We, Yvonne Cummings and Laura Claiborne, leave our studious ways to anyone who is "willing to pay the price" for high grades.

I, Joyce Freeland, leave my place on the cheer-leading squad to anyone who would really like to support the team.

I, Mary Ellen Williams, leave my ability to write poetry to Patsy Myers.

We, Juanita Wallace and Edna McCormack, leave our friendly ways to Carol McGlothlin.

We, Magdlene Keene, Margaret Parker, Marie Brown, and Jane Williams, leave our quietness to Barbara Freedle and Eunice Hodges who need it.

We, Juanita Street, Lorene Williams, and Barbara Groves, leave our neatness to Sue Moyer.

We, Doris Brown and Joan Harris, leave our places on the basketball team to Joan Hunter and Jean Cron.

I, Jane Bell, leave some of my sophistication to a few of the silly girls of S. C. H. S.

We, Mary Frances Ferguson and Minnie Sou Perdue, leave our shortness to Lois Beasley.

I, Billy Freeland, leave gladly—with Juanita!

We, Jimmy Johnson and David Jones, leave our place as football managers to Donnie Wiseman and Dean Sheucraft.

I, Beatrice Long, leave my loud mouth to June Canida.

I, David Kirkham, leave my F. F. A. work to Wayne Cummings who has such a good start already.

I, James Leath, leave a few of my extra pounds to Charles Wilkerson.

I, June Deasy, leave my ability to debate to Pat Wright.

We, Virginia Kepley and Florence McCloud, leave our smiles to Barbara Hunter who can use them effectively.

I, Ray Hodges, leave my ability to handle Mrs. Jernigan in History to Ronnie Atchison.

I, Jean Cook, leave my jolliness to everyone at S. C. H. S. who would like to lighten the load with a ray of sunshine.

I, Sue Paul, leave my capacity for getting into trouble—gladly!

I, Clarice Adams, leave my artistic ability to Yvonne Lee.

I, Alice Shirrell, leave my sincerity to Sarah Dye.

I, Frank Wilkes, leave—but take every thing with me.

I, Eugene Garrett, leave with fond memories of carefree high school days.

I, Harold Denning, leave with no regrets!

I, Betty Devasher, leave my unique ways to Janette Gourley.

I, J. P. Crafton, leave—I hope!!

I, Kenneth Dorris, leave my ability to get along with other people to Joe Hester.

I, Wayne Gregory, leave—glad to get out—finally!

I, Perry Harper, leave my ready wit to Joe Elliott.

I, Bobby White, leave my cheerfulness to Jimmy Graves.

I, Mary Elizabeth Webb, leave my ability to stay on the honor roll to my younger sister, Barbara.

We, Charles Williams and Rhea Chandler, leave our determination to get out of school to the members of the freshman class.

I, Jim Collins, leave my position as guard on the football team to my younger brother, John!

I, Donald Collins, leave—and surprise you by going on to college.

This document having been drawn up as our last will and testament, we, the Senior Class, do hereby leave, with great hopes for the future and kind regards for all our underclassmen!

Mary Elizabeth Webb
Testator

Class Prophecy

S. C. H. S.

May, 1953

As I was riding on a plane from San Francisco to New York, I met an old classmate, June Deasy, who graduated with me from S. C. H. S. in 1953. We began talking about the good times that we had in school and it seemed our minds were running on the same thing, for we both were wondering what had happened to our old classmates. Just then the airplane hostess, Sue Paul, came through. She had found an old crystal ball that someone had left on the plane. As we began looking into the ball together, the first place that came into view was S. C. H. S. There was Ray Hodges, the new principal and his efficient secretary, Mary Elizabeth Webb. Then we heard singing from the auditorium where Beatrice Long was directing her excellent Glee Club. She had as her new assistant, Jean Cook, who was also the piano teacher.

Suddenly the football field came into view. There was James (Catfish) Leath who was still trying to have as good a football team as Coach McDonald did in 1952. Speaking of football, Bobby Neal and Glenn Glover, whom we knew as the "Touchdown Twins," back in high school, still have their football abilities. Glenn is playing professional football now and Bobby is coaching in a small town in Maryland. Bobby isn't married because he is still looking for the rich girl. Looking back into the crystal, we still see the school but the scene has changed to the gym where Joan Harris has her basketball girls around her telling them about the team she used to play on when Doris Brown was playing too. Doris seems to love children since she has two and is teaching Sunday School where her husband is preacher. That reminds us that some more of our classmates married right after graduation. Mrs. James Dickens (Barbara Groves) lives on a big cattle farm in Mitchellville. Alice Sherrill and her husband are the new owners of Shell City Cafe. Mr. and Mrs. Billy Freeland (Juanita Street) are living on a farm near Oak Grove—raising chincillas.

Well, we have talked long enough, and we must see what the crystal ball can tell us about our other classmates. Soon we see a beauty shop in Portland owned by Florence McCloud. Her employees are Marie Brown and Betty Devasher who seem to be very busy. The door opens and in walks Mary Frances Ferguson who is teaching Physical Education at Gallatin High School where Laura Ruth Claiborne is teaching History and Eugene Garrett is Agriculture Instructor. The door opens wide and in walks Magdalene Keene and Minnie Lou Perdue, who work at Booker's Store. While waiting, they were glancing through some papers and magazines on the table. There was an advertisement of Jane Bell's Modeling School and Perry Harper's Electrical Appliance Shop. Edna McCormack is Perry's secretary and his main salesmen were Rhea Chandler, Charles Williams, and Kenneth Dorris. Then Minnie turned to the entertainment page and saw that an orchestra with Joyce Freeland was appearing at the Portland Dinner Club whose manager is Jimmy Johnson (still liking the job of manager). "The Mischievous Two" starring Jackie White and Harold Ragen is playing at the Strand Theatre which is owned by Frank Wilkes (rising in his position) and the manager is J. P. Crafton. Also on the entertainment page was a picture of David Jones and his band who are signed up with the Grand Ole Opera.

Now the scene is changing from the beauty shop to the church. We hear the wedding march. Here comes the bride and groom, Mary Ellen Williams and Donald Collins. We see Jim Collins as his cousin's best man and Lorene Williams as her niece's bridesmaid. Wayne Gregory, the preacher, has just married the couple and we notice Jane Williams and Margaret Parker, who own the Portland Kindergarten, throwing rice at the newlyweds as they leave. Then the Photographer, David Kirkham, is waiting outside the church; and Bobby White, owner of White's Buick Motor Co., drives the couple away. Coming out the church door, we see Harold Denning, dressed in a Navy uniform with lots of medals attached. Next, we see Yvonne Cummings, Editor of the Upper Sumner Press, and Clarice Adams, dress designer at Chandler's Store, talking on the church steps.

My goodness! We got so lost in the wedding viewed in the crystal that our plane landed. Sue helped us off the plane and then we had to part, for June was going to a Debate Convention in Philadelphia and I—I must continue my sightseeing trip around the country. After thinking our conversation over, it seems that no matter how many new friends you meet, you can't ever forget the old ones.

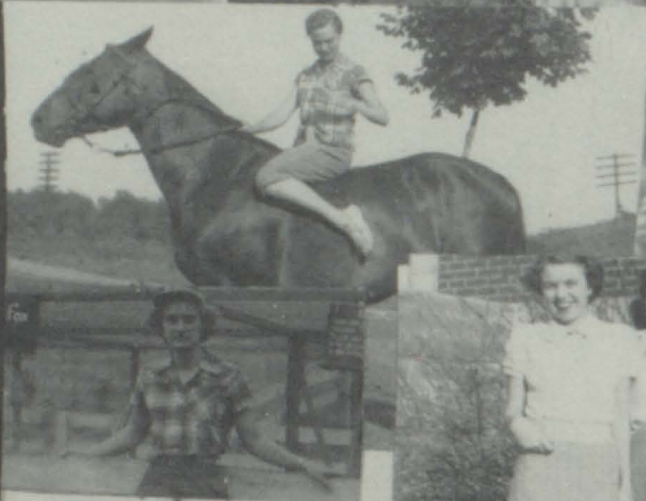
Juanita Wallace
Class Prophet

The Panthers

Honor Roll

SEMESTER AVERAGE

PATRICIA WRIGHT	98.75	ALICE SHIRRELL	93.00
BETTY J. PALMER	98.50	JUANITA WALLACE	93.00
JUNE CANIDA	98.25	DONALD BARRY	92.75
LAURA CLAIBORNE	97.25	EVELYN HESTER	92.75
YVONNE LEE	97.00	HERMAN CRAFTON	92.50
DONALD TAYLOR	96.75	CAROLYN BROWN	92.25
EUNICE HODGES	96.50	JOYCE FREELAND	92.25
YVONNE CUMMINGS	96.00	NANCY FREELAND	92.25
JOYCE McDANIEL	96.00	JANETTE COURLEY	92.25
MARY E. WEBB	96.00	BARBARA GROVES	92.25
JUNE AUSTIN	95.75	DONNA F. PERDUE	92.25
THOMAS BRILEY	95.50	DONNY WISEMAN	92.00
JACKEE SMART	95.50	SAMMIE BUSH	92.00
MARY E. WILLIAMS	95.25	JEAN CRON	92.00
CINDA JENKINS	95.25	SARAH DYE	92.00
CAROLYN McDOWELL	94.75	WAYNE GROVES	92.00
WILMA CLAIBORNE	94.75	KATHERINE KELLY	91.75
SHIRLEY WISEMAN	94.50	DOT DEVASHER	91.75
CARL PIKE	94.50	BILLY FREELAND	91.75
DIANA STEWART	94.25	PEGGY HARPER	91.50
DON TURNER	94.00	CAROLYN FLEMING	91.50
RAMONA COKER	94.00	SUE ELLEN LINK	91.25
PATSY JOHNSON	94.00	PEGGY ARMSTRONG	90.75
DAVID LANIER	94.00	YVONNE CHERRY	90.75
JEANETTE STREET	93.75	SHIRLEY LINK	90.50
MARIE PIRTLE	93.75	CHARLES CAUDILL	90.50
BARBARA VAUGHN	93.75	SUE WILKINSON	90.25
WAYNE PERRY	93.25	FAYOLA DEASY	90.25
CAROL McGLOTHLIN	93.00	JIM JOHNSON	90.25
CLARICE ADAMS	93.00	JUANITA STREET	90.25
JOHNNY ALDEN	93.00	JUANINE THURMAN	90.00
MONEECA DODDS	93.00	JOE HESTER	90.00
NORMAN LANE	93.00	JIMMY WOODARD	90.00





JUNIOR CLASS OFFICERS

JOE ELLIOTT.....	<i>President</i>
NORMAN LANE.....	<i>Vice President</i>
JEAN STINSON.....	<i>Secretary-Treasurer</i>
PATRICIA CUMMINGS.....	<i>Reporter</i>





THELMA ADAMS
Patience is the key of content.



RONNY ATCHISON
He thinks too little that talks too much.



MARGUERITE ARMSTRONG
A smile is the whisper of a laugh.



BOBBY AUSBROOKS
Girls—I love for what they are.



MARY AUSBROOKS
Reason should direct; and appetite, obey.



TALMADGE BRILEY
Good nature is stronger than tomahawks.



WANDA BROWN
Good humor is the heart of the soul.



HERMAN CRAFTON
It is a wise head that makes a still tongue.



CHERRY CRAIGGE
A thousand words will not leave so deep an impression as one good deed.



DAVID CUMMINGS
Peace rules the lad where reason rules the mind.



PATRICIA CUMMINGS
Politeness is but kind feeling toward others.



CAROLYN DAVIS
Light is the task when many share the toil.



FAYOLA DEASY
Originality is simply a pair of fresh eyes.



AGNES DEJOHN
To make a sure fire-hit is easy—just fire at nothing and blaze away.



BETTY DOUGLAS
Be a live wire and you won't get stepped on.




SARA DYE
The highest phrase of music flows from the feeling of the heart.




JOE ELLIOT
Even the greatest of men ask foolish questions.





CHARLES FISHER
Laziness—The anesthetic love of physical calm.



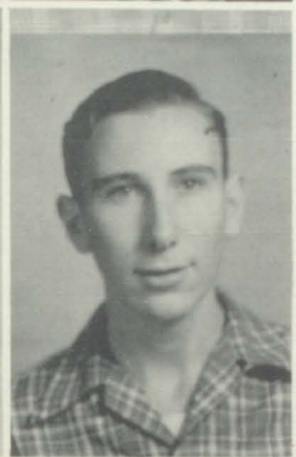
DONNA FRANKLIN
*Wit is the salt of conversation,
not the food.*





BARBRA FREEDLE
*Maiden with deep blue eyes in
whose depth much mischief lies.*



JEANETTE GOURLEY
*Here is a girl with a heart, a
smile, that makes the babble of
life worth while.*

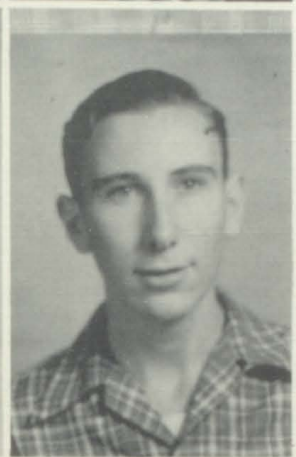



JIMMY GRAVES
*The best throw of the dice is to
throw them away.*





BOBBY GRAY
Never meet trouble half way.

THURMAN HARPER
Life is short and so am I.





BILLY HARRIS
Will is character in action.

JOE HESTER
*Not afraid of work, but not in
sympathy with it.*





ALBERTA HOBODY
*Paradise is open to all kind
hearts.*

BARBRA HUNTER
*Sorrow, like rain, makes roses
and mud.*





ELWANDA JENKINS
*We forgive too little and forget
too much.*

ALLEN JONES
*It is a wise head that makes a
still tongue.*





PHYLLIS KEEN
*Full of sweetness, gum and
giggles.*

LOIS KIRKHAM
*It ain't no use puttin' up your
umbrella till it rains.*



FRANCES KNIGHT
*All grand thoughts come from the
heart.*

J. R. LAMBERTH
*He must not laugh at his own
wheeze, a snuff-box has no right
to sneeze.* **WAYNE LAMBERTH**
*Joy is the fruit that American's
eat green.*



NORMAN LANE
*I will utter what I believe today
if it conrtadicts what I said
yesterday.*



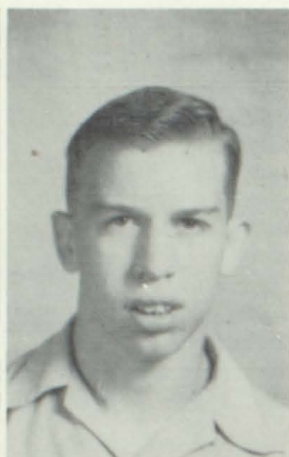
DAVID LANIER
*A little nonsense now and then is
 relished by the wisest men.*



YVONNE LEE
*She seeketh diligently after
 knowledge.*



SHIRLEY LINK
*Our opportunities to do good are
 our talents.*



HOWARD MARTIN
*He who seeks the truth should be
 of no country.*



CHARLES MCDUGAL
*A smile for all, a greeting glad,
 amiable jolly way he has.*



CAROLYN MCDOWELL
Her modesty, her true self hides.



CAROL MCGLOTHLIN
*When you work, work hard, when
 you sit, sit loose, and when you
 worry go to sleep.*



JOHN PAYNE
*Opportunity is rare, and a wise
 man will never let it go.*



DONNA PERDUE
*Our deeds follow us, and what we
 have been, makes us what we are.*



JEAN STINSON
*Marriage is the Keeley cure of
 love's intoxication.*



SUE MOYE
*Her disposition is as sunny as
 her hair.*



CHARLIE STOUT
*A man's best friends are his ten
 fingers.*



J. C. THOMPSON
*Someday I shall cast aside my
 boyish pranks and become a man.*



HAROLD VAUGHN
*One hour of sleep before mid-
 night is worth two after.*



SUE WILKINSON
*Always jolly, always gay, always
 in for any old fray.*



JIMMY WISEMAN
*Lazy, lazy ain't no name, but I
 get there just the same.*



JIMMY WOODWARD
*Time works wonders, so would
 people if they worked 24 hours a
 day as time does.*



JEAN YOUNG
*The world belongs to the en-
 thusiast who keeps cool.*



SOPHOMORE CLASS OFFICERS

CHARLES CAUDILL.....	<i>President</i>
DONNY WISEMAN.....	<i>Vice President</i>
EUNICE HODGES.....	<i>Secretary-Treasurer</i>
WAYNE GROVES.....	<i>Reporter</i>



Peggy
Armstrong



June
Austin



Donald
Barry



Nellie
Brewer



Howard
Brizendine



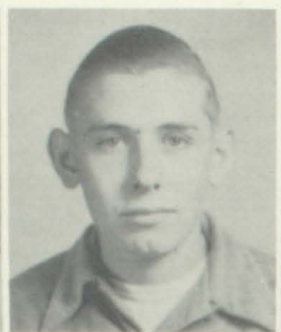
Bill
Brown



Bonnie
Brown



Carolyn
Brown



James
Brown



M. H.
Bush



Sammie
Bush



Louis
Callis



Huey
Calvert



June
Canida



Dorothy
Carter



Charles
Caudill



Yvonne
Cherry



Archie
Claiborne



Wilma
Claiborne



John
Collins



Jean
Cron



Bobbie Jo
Crunk



Wayne
Cummings



Bobby
Denning



Dorothy
Devasher



Nell Ruth
Dillard



Dorothy
Dobbs



Donald
Edens



Billy
Empson



Carolyn
Fleming



Peggy Fleming



Bobby Forbis



Nancy Freeland



Joe Freeman



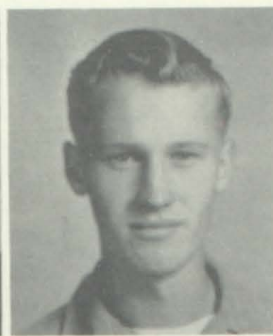
Glenda Garrett



Charles Graves



Wayne Groves



Billy Hall



William Hall



Bobby Harper



Peggy Harper



Patsy Hobby



Eunice Hodges



Frances Hudson



Joan Hunter



Richard Hunter



Armel Jackson



Jean Jernigan



Jim Johnson



Patsy Johnson



Jane Lamberth



Janette Lamberth



Pat Lewis



Sue Ellen Link



Glenda Mayes



Birdie McCain



Joyce McDaniel



Gordon Meador



Dorris Munday



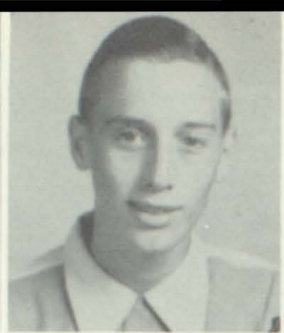
Patsy Myers



Annette Oldham



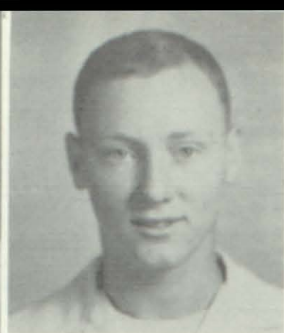
Wilma Perdue



Wayne Perry



Jimmy Phillips



Carl Pike



Aretta Poole



Joyce Poole



Bill Russell



Theda Scott



Jo Shadowens



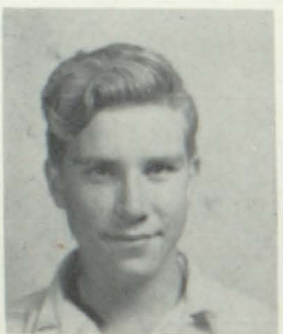
Lula Shirrell



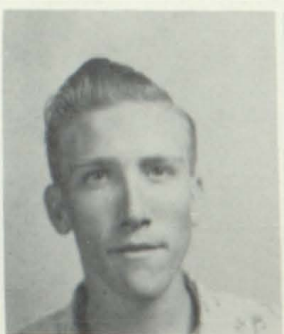
Janice Simpson



Jackee Smart



Billy Stephens



James Stephens



Rhea Stewart



Ila Deane Story



Norman Stovall



Janette Street



Donald Taylor



Barbara Vanatta



Barbara Vaughn



James Walters



Kenneth White



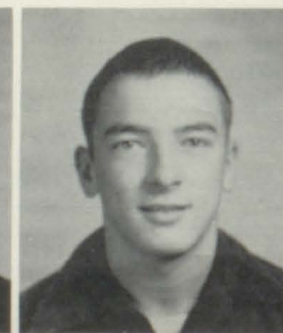
Charles Wilkinson



Bobby Williams



Donny Wiseman



Neva Wilson



Pat Wright





FRESHMAN CLASS OFFICERS

BUDDY WEST.....	<i>President</i>
DEAN SHEUCRAFT.....	<i>Vice President</i>
CINDY JENKINS.....	<i>Secretary-Treasurer</i>
DON TURNER.....	<i>Reporter</i>

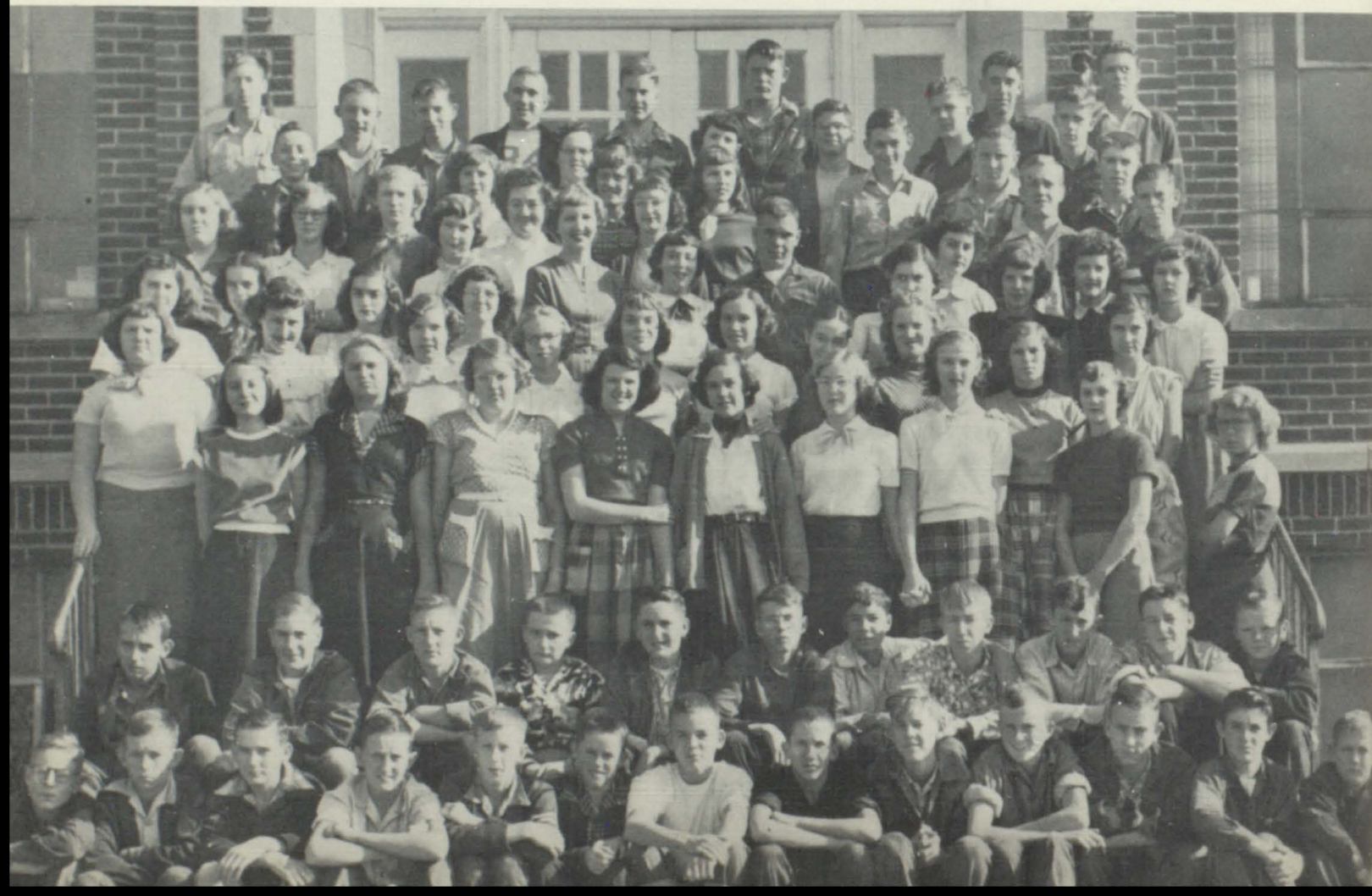
Buddy West.....	<i>President</i>
Dean Sheucraft.....	<i>Vice President</i>
Cindy Jenkins.....	<i>Secretary-Treasurer</i>
Don Turner.....	<i>Reporter</i>
Moore, Mischnick, Ricketts.....	<i>Sponsors</i>

Allison, B.
 Ausbrooks, L.
 Beasley, L. M.
 Beasley, R.
 Briley, J. L.
 Carter, M.
 Coker, R.
 Cole, M.
 Collins, A.
 Collins, S.
 Cook, J.
 Crafton, J.
 Davis, M.
 DeJohn, E.
 Dodds, M.
 Fleming, S.
 Goodwin, P.
 Goostree, I.
 Graves, D.
 Hester, E.
 Kelly, K.
 Keen, S.

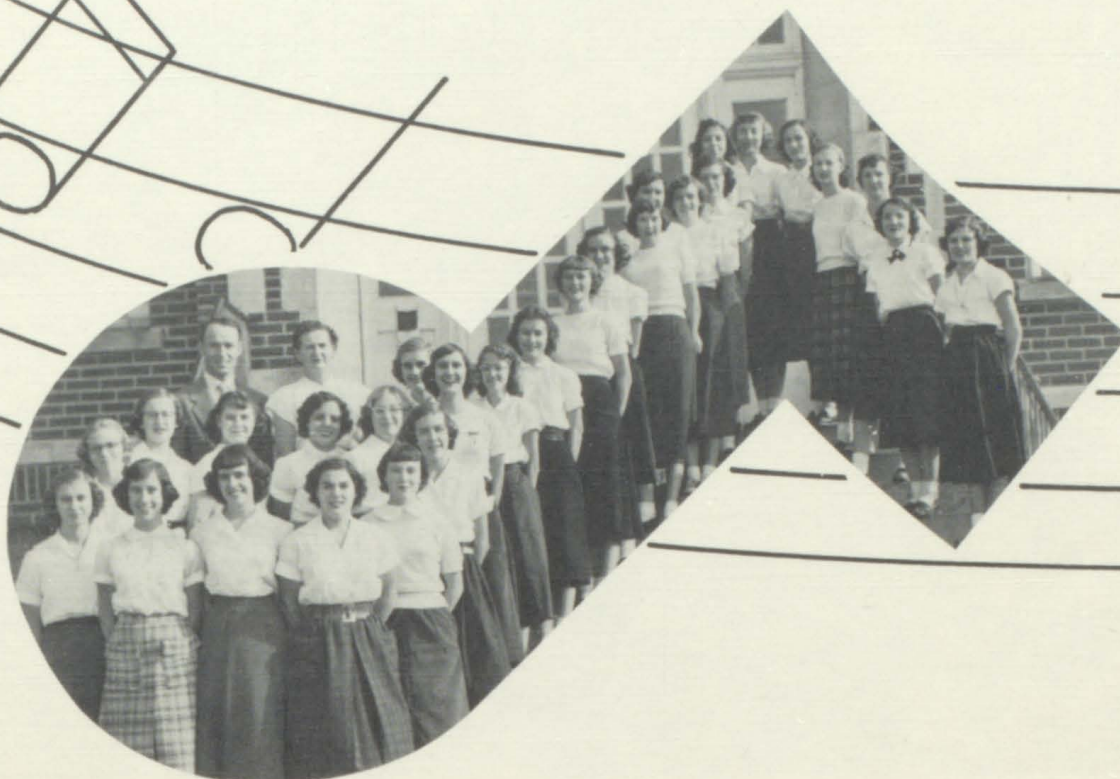
Legge, M.
 Link, J.
 Link, S.
 Markham, D. S.
 McReynolds, L.
 Palmer, B.
 Parker, B.
 Perdue, V.
 Pirtle, M.
 Roark, N.
 Sadler, H.
 Shadowens, M. A.
 Stewart, D.
 Stewart, J.
 Stout, M.
 Thurman, J.
 Vanatta, J.
 Vaughn, E. R.
 Ventress, K.
 Webb, B. G.
 Wilkinson, R.
 Wiseman, S.

Alden, J.
 Barry, W.
 Briley, B.
 Bruce, B. J.
 Caudill, B.
 Caudill, G.
 Clemmons, J.
 Clubbs, A.
 Cook, D.
 Denning, B.
 Denning, G.
 Dodds, G.
 Freeman, J.
 Garrison, J.
 George, B.
 Glover, M.
 Gregory, R. L.
 Groves, C.
 Harper, H.
 Henson, C.
 Hodges, A.
 Hunter, C.

Hunter, H.
 Kepley, W.
 Kirkham, B.
 Kirkham, E.
 Kirkham, H.
 Link, C.
 Martin, R.
 McDonald, C.
 McGuffie, H.
 Nuckols, B.
 Perdue, W.
 Poole, T.
 Ray, L.
 Riggsbee, W.
 Stephens, C.
 Summers, E.
 Swann, J. F.
 Utley, L.
 Vanatta, D.
 White, B. J.
 Wright, J. L.



Glee Club



Joyce Freeland.....	<i>President</i>
Jean Cook.....	<i>Vice President</i>
Mary F. Ferguson.....	<i>Secretary</i>
Patsy Johnson.....	<i>Reporter</i>

Peggy Armstrong
 June Austin
 Ruth Beasley
 Shirley Collins
 Jean Cook
 Bobbie Jo Crunk
 Patricia Cummings
 Yvonne Cummings
 June Deasy
 Elouise DeJohn

Monecca Dodds
 Frances Ferguson
 Joyce Freeland
 Glenda Garrett
 Jean Porter Jernigan
 Pat Johnson
 Katherine Kelly
 Frances Knight
 Patricia Lewis
 Beatrice Long

Florence McCloud
 Edna McCormack
 Joyce McDaniel
 Patsy Ann Myers
 Betty Joan Palmer
 Nell Roark
 Jackee Smart
 Sue Wilkinson
 Neva Wilson
 Pat Wright



Jean Young.....*President*
 Bobbie Crunk.....*Vice President*
 Barbara Groves.....*Secretary*
 Mary Ferguson.....*Treasurer*
 Virginia Kepley.....*Reporter*



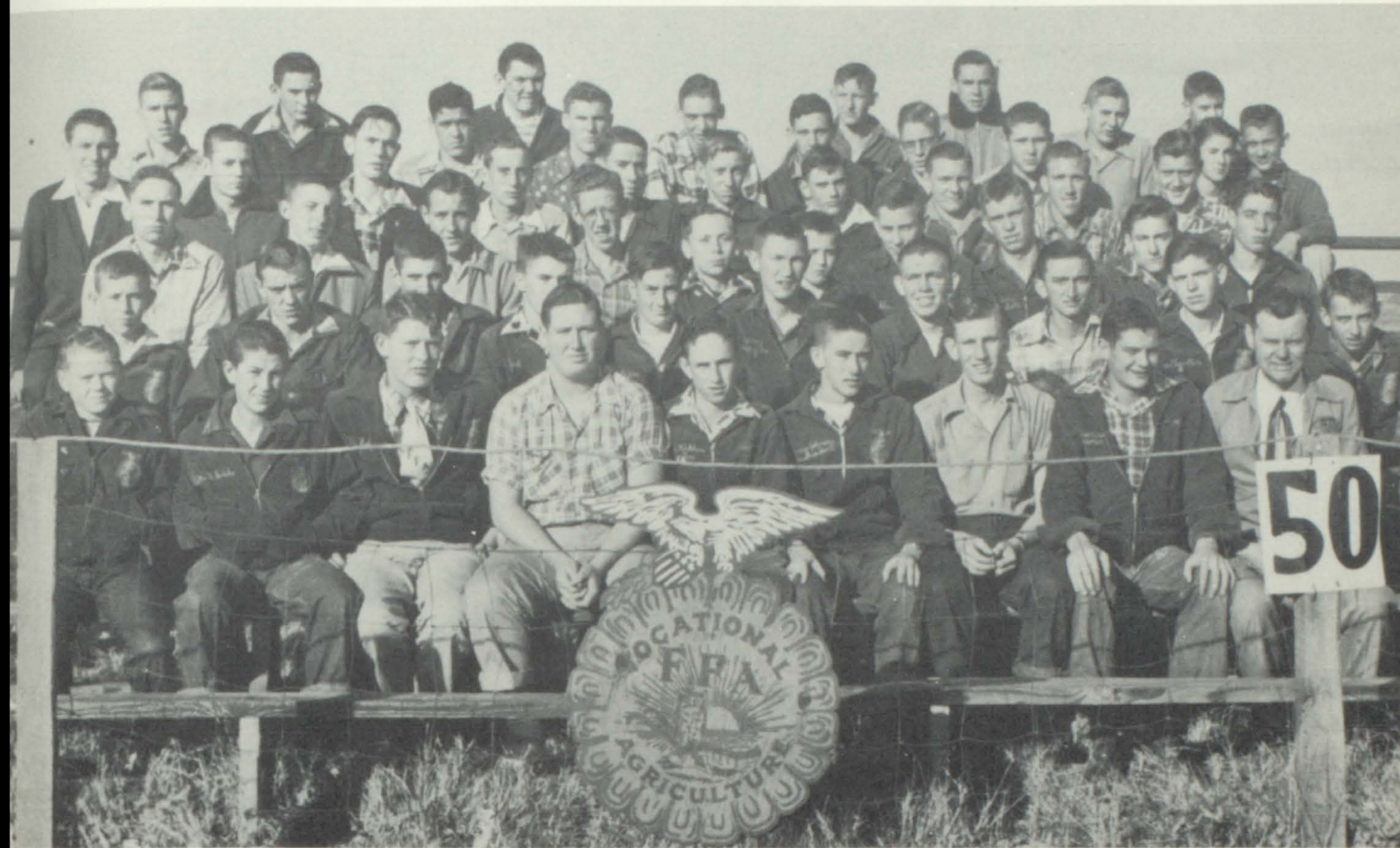
Juanita Street.....*Parliamentarian*
 Dean Parker.....*Historian*
 Patsy Myers.....*Song Leader*
 Neva Wilson.....*Pianist*
 Mrs. Forrest Crunk.....*Ch. Mother*

Miss Maxine Jenkins—*Sponsor*



F. F. A.

Ray Hodges	<i>President</i>
Jimmy Johnson	<i>Vice President</i>
James Leath	<i>Secretary</i>
Billy Freeland	<i>Treasurer</i>
David Kirkham	<i>Reporter</i>
Mr. Dorris	<i>Advisor</i>



Briley, Bobby
 Briley, Talmadge
 Brown, Bill
 Brown, James
 Bush, M. H.
 Chandler, Rhea
 Claiborne, Archie
 Clubbs, Alvin
 Collins, John
 Cook, Donald
 Cummings, David
 Cummings, Wayne
 Edens, Donald
 Fisher, Charles

Freeland, Billy
 Freeman, Jackie
 Freeman, Joe
 Garrett, Eugene
 Gray, Bobby
 Gregory, Roy
 Gregory, Wayne
 Graves, Charles
 Groves, Wayne
 Hall, William, Jr.
 Harper, Bobby
 Harper, Thurman
 Harris, Billy
 Hodges, Alfred

Hodges, Ray
 Hunter, Cecil
 Hunter, Harold
 Hunter, Richard
 Jones, Allen
 Johnson, Jimmy
 Kepley, Willard
 Kirkham, Billy
 Kirkham, David
 Kirkham, Earl
 Kirkham, Harold
 Lamberth, Wayne
 Leath, James
 Meador, Gordon

Mundy, Dorris
 Perry, Wayne
 Ray, Larry
 Stephens, Billy
 Stephens, James
 Stuet, Charles
 Thompson, J. C.
 Vanatta, David
 Vaughn, Harold
 Walters, James
 White, Bobby
 Williams, Bobby
 Woodard, Jimmy
 Wright, J. L.



BETA CLUB

Norman Lane.....	<i>President</i>
Joe Elliott.....	<i>Vice President</i>
Mary E. Williams.....	<i>Secretary</i>
June Austin.....	<i>Treasurer</i>
Shirley Link.....	<i>Reporter</i>
Mrs. Hunnicutt.....	<i>Sponsor</i>

June Austin
 Doris Brown
 June Canida
 Charles Caudill
 Laura R. Claiborne
 Wilma Claiborne
 Yvonne Cummings
 Fayola Deasy

Joe Elliott
 Barbara Freedle
 Joyce Freeland
 Janette Gourley
 Wayne Groves
 Eunice Hodges
 Jimmy Johnson
 Patsy Johnson

Norman Lane
 David Lanier
 Yvonne Lee
 Shirley Link
 Edna McCormack
 Joyce McDaniels
 Carolyn McDowell
 Carol McGlothlin

Carl Pike
 Jacquelin Smart
 Juanita Street
 Juanita Wallace
 Mary E. Webb
 Sue Wilkinson
 Mary E. Williams
 Pat Wright

FRESHMAN

Betty Palmer..... *Editor*
 Cindy Jenkins..... *Feature Editor*
 Buddy West..... *Sports Editor*
 Lewis Utley, Marie Pirtle..... *Artists*
 Shirley Wiseman..... *Business Manager*
 G. Caudill..... *Joke Editor*

JUNIOR

Yvonne Lee..... *Editor*
 Norman Lane..... *Assistant Editor*
 Sarah Dye..... *Feature Editor*
 Jimmy Wiseman..... *Sports Editor*
 Yvonne Lee..... *Artist*
 Ronny Atchison..... *Business Manager*
 Jimmy Graves..... *Joke Editor*



SOPHOMORE

Patsy Johnson..... *Editor*
 Charlie Caudill..... *Assistant Editor*
 Pat Wright..... *Feature Editor*
 John Collins..... *Sports Editor*
 Bill Russell..... *Artist*
 Donny Wiseman..... *Business Manager*
 Bobby Jo Crunk..... *Joke Editor*

SENIOR

Juanita Street..... *Editor*
 Billy Freeland..... *Assistant Editor*
 Mary Williams..... *Feature Editor*
 James Leath..... *Sports Editor*
 Clarice Adams..... *Artist*
 Mary Ferguson..... *Business Manager*
 Jean Cook..... *Joke Editor*

PAPER STAFF

SCIENCE CLUB

Joe Elliott.....*President*
 David Lanier.....*Vice President*
 Yvonne Cummings.....*Secretary*
 Frances Ferguson.....*Treasurer*
 Jackee Smart.....*Reporter*
 Sara Dye.....*Librarian*
 Lawrence Bradley.....*Sponsor*



John Alden
 Jane Bell
 Nellie Brewer
 Sonny Brizendine
 Bill Brown
 Yvonne Cherry
 Anne Collins
 Herman Crafton
 Joyce Crafton
 Jean Cron
 Fayola Deasy
 Agnes DeJohn
 Elouise DeJohn
 Harold Denning
 Betty Devasher
 Gary Dodds

Monecca Dodds
 Billy Empson
 Barbara Freedle
 Nancy Freeland
 Janette Gourley
 Evelyn Hester
 Patsy Hobdy
 Eunice Hodges
 Joan Hunter
 Cinda Jenkins
 Katherine Kelly
 Joyce Link
 Shirley Link
 Sue Link
 Florence McCloud
 Carolyn McDowell
 Charles McDougal

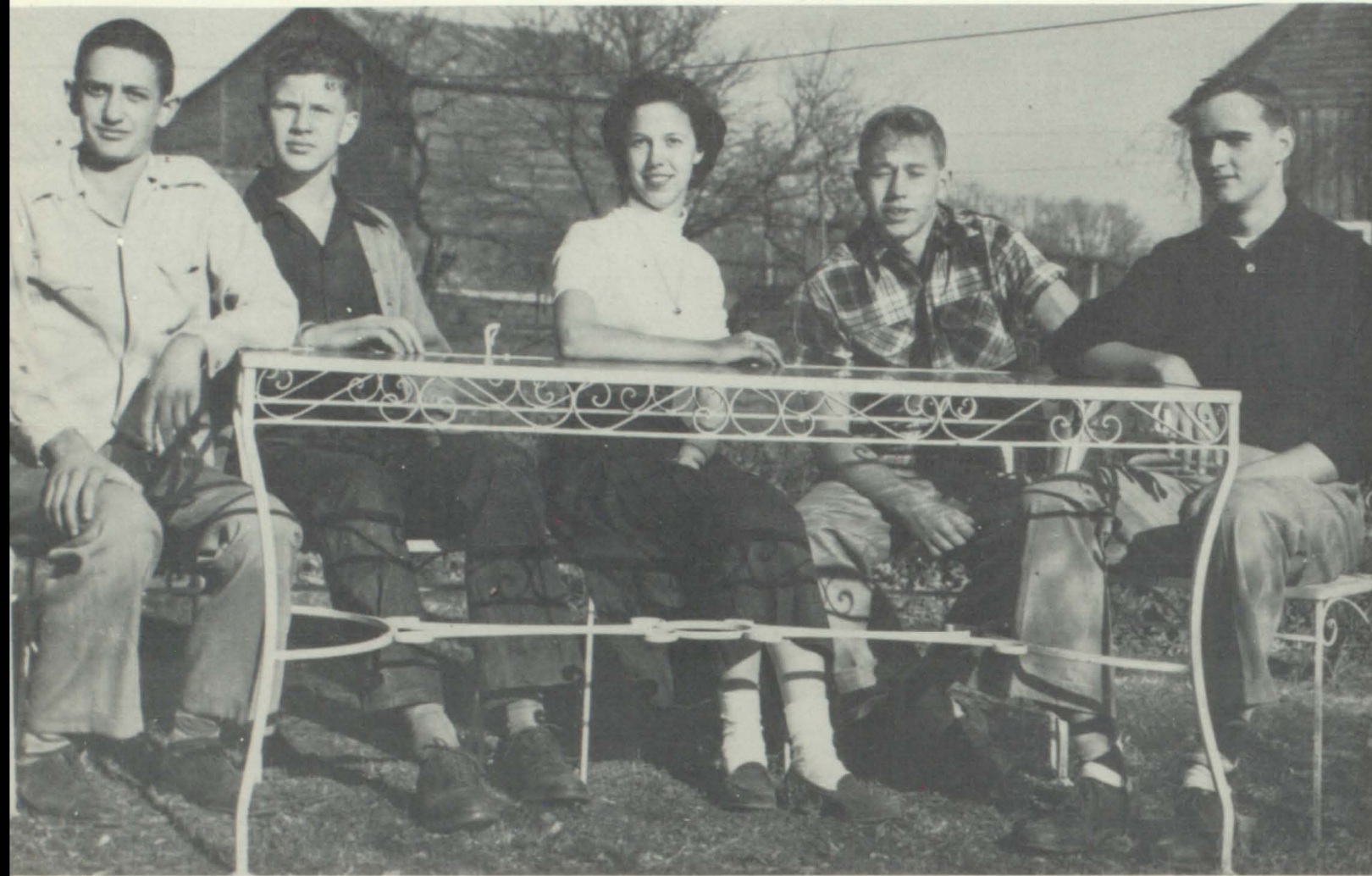
Carol McGlothlin
 Gordon Meadors
 Donna Perdue
 Bill Russell
 Jean Stinson
 Charles Stephens
 Norman Stovall
 Don Turner
 Barbara Vaughn
 Barbara Webb
 Mary E. Webb
 Bobby Joe White
 Frank Wilkes
 Sue Wilkinson
 Lorene Williams
 Shirley Wiseman

Debate



Patricia Wright Gary Dodds
June Deasy Norman Stovall Jackie Smart
Sponsor: Mrs. Hummicult

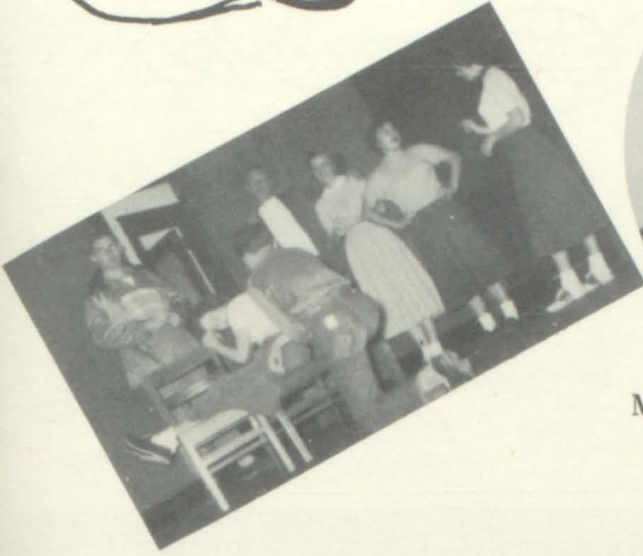
Student Council



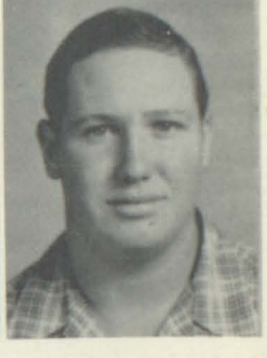
Billy Empson Lorene Williams
Norman Lang
Gary Dodds Bobby Neal, Chm



DRAMATIC CLUB



Miss Carolyn Kerley
Sponsor



Jimmy Johnson
President

Patsy Johnson
Vice President

Dean Sheucraft
Secretary

Ray Hodges
Treasurer

Fayola Deasy
Reporter

James Leath
Sergeant-at-Arms

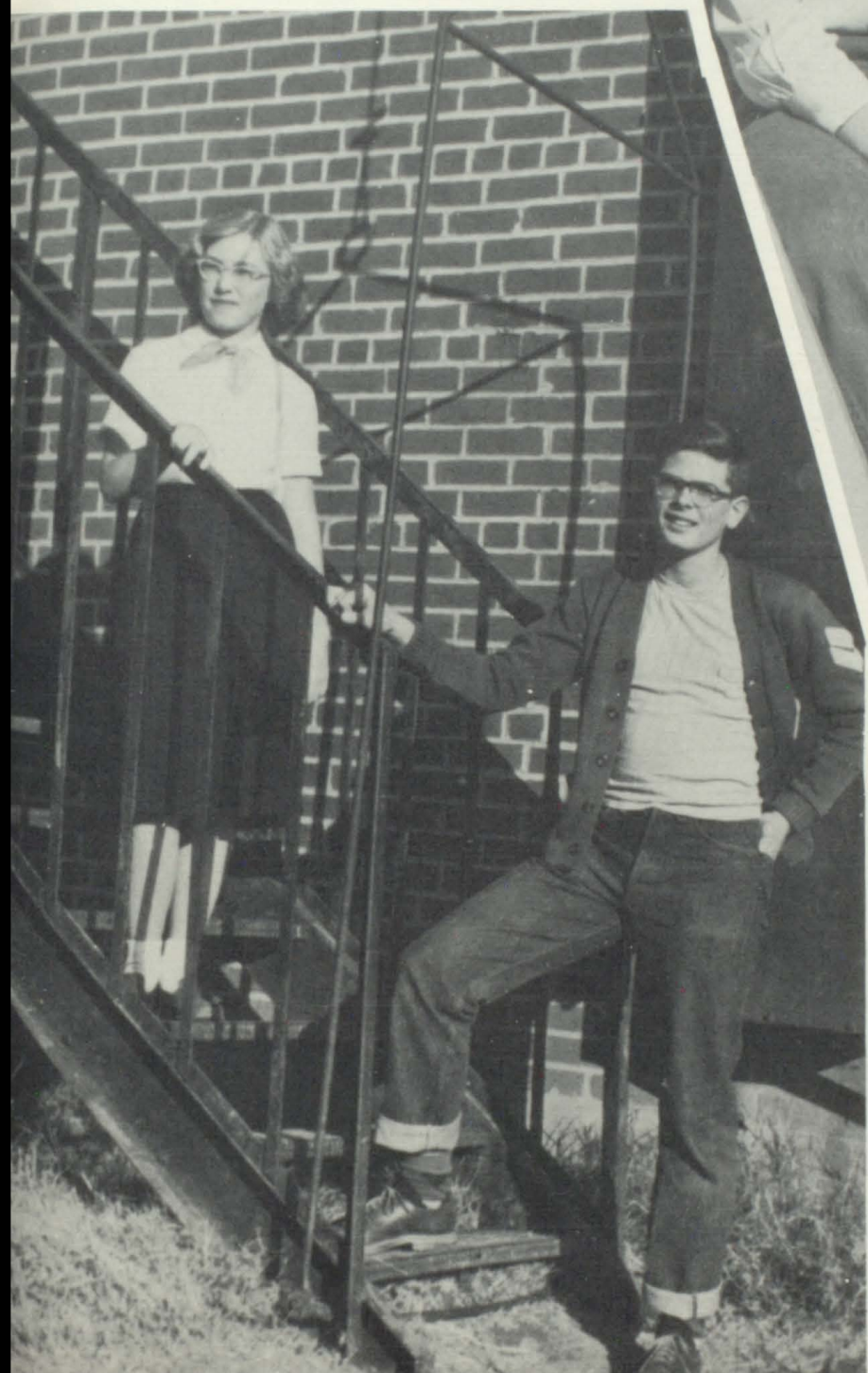


*Outstanding
Seniors
Guanita Street
Dorcy Harper*



*Juniors
Carolyn McDowell
Joe Elliott*

Personalities
Sophomores
Patricia Wright
Charles Caudill



Freshmen
Betty Jean Palmer
John Alden





BOBBIE



PAT



CAROL



BARBARA



FAYOLA



PATSY



JOYCE



SHIRLEY

Patsy Johnson
Joyce Freeland

Shirley Link
Bobbie Crunk

Pat Wright
Barbara Webb

Carol McGlothin
Fayola Deas,

Miss Kerley—Sponsor

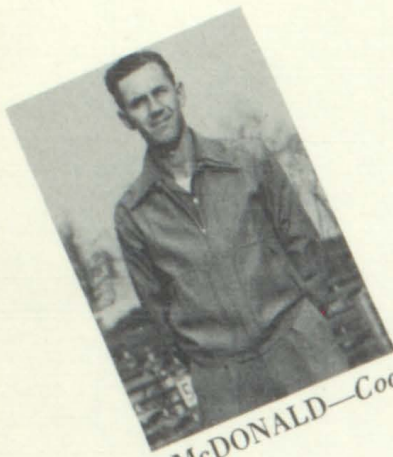


Coronation

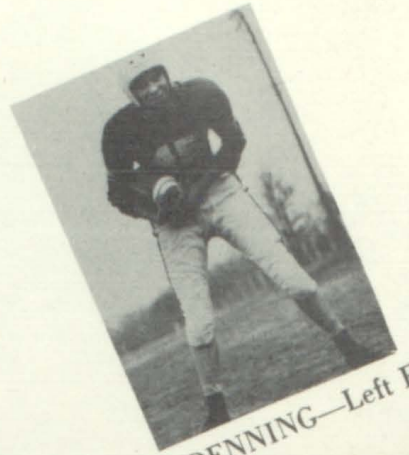
of Queen



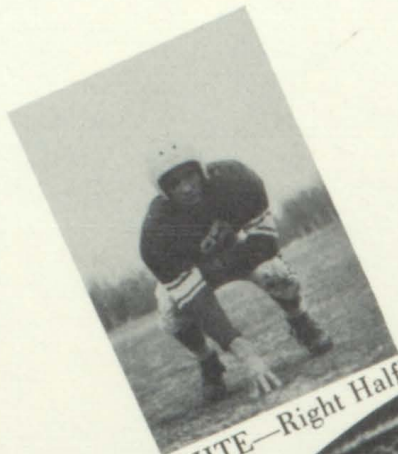




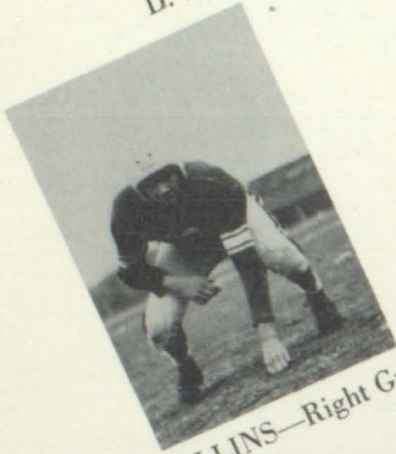
D. McDONALD—Coach



H. DENNING—Left End



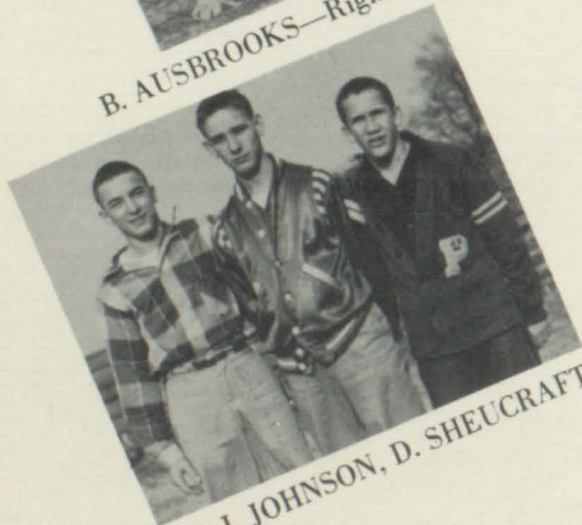
B. WHITE—Right Halfback



J. COLLINS—Right Guard



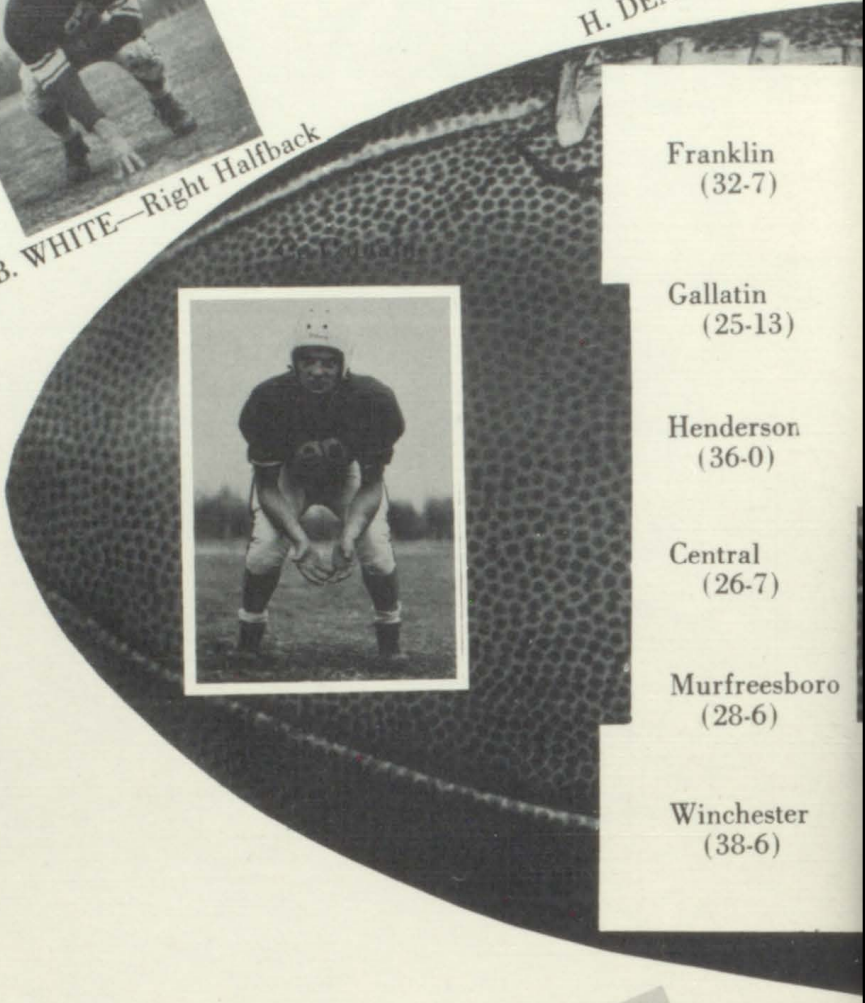
B. AUSBROOKS—Right Tackle



D. WISEMAN, J. JOHNSON, D. SHEUCRAFT—Managers



C. PIKE—Quarterback



Franklin
(32-7)

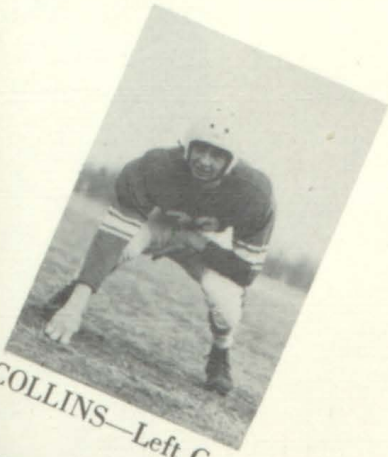
Gallatin
(25-13)

Henderson
(36-0)

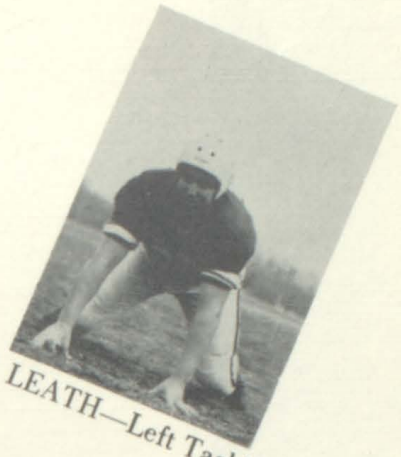
Central
(26-7)

Murfreesboro
(28-6)

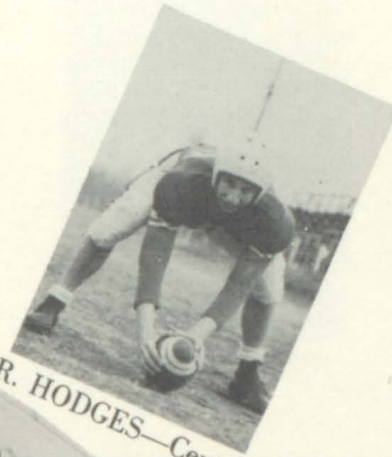
Winchester
(38-6)



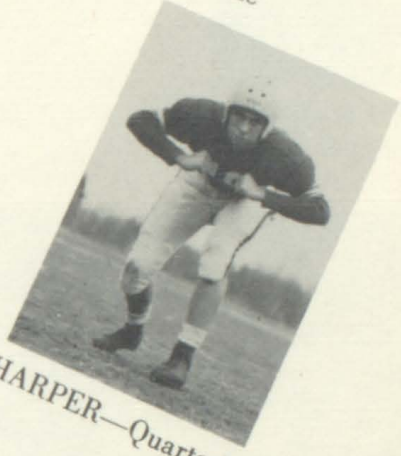
D. COLLINS—Left Guard



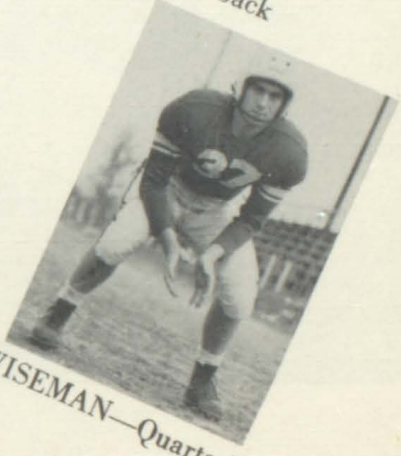
J. LEATH—Left Tackle



R. HODGES—Center



P. HARPER—Quarterback



J. WISEMAN—Quarterback

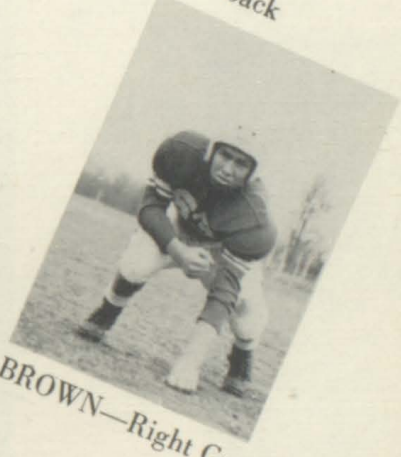


Co-Captain

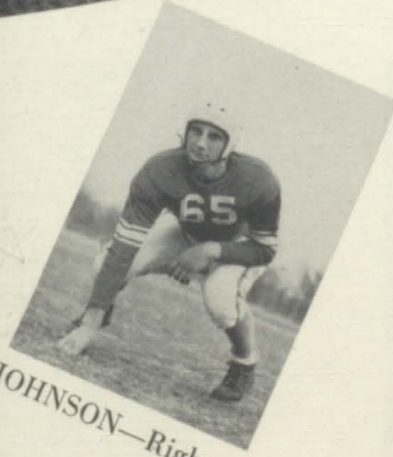
B. NEAL



N. LANE—Left End



B. BROWN—Right Guard



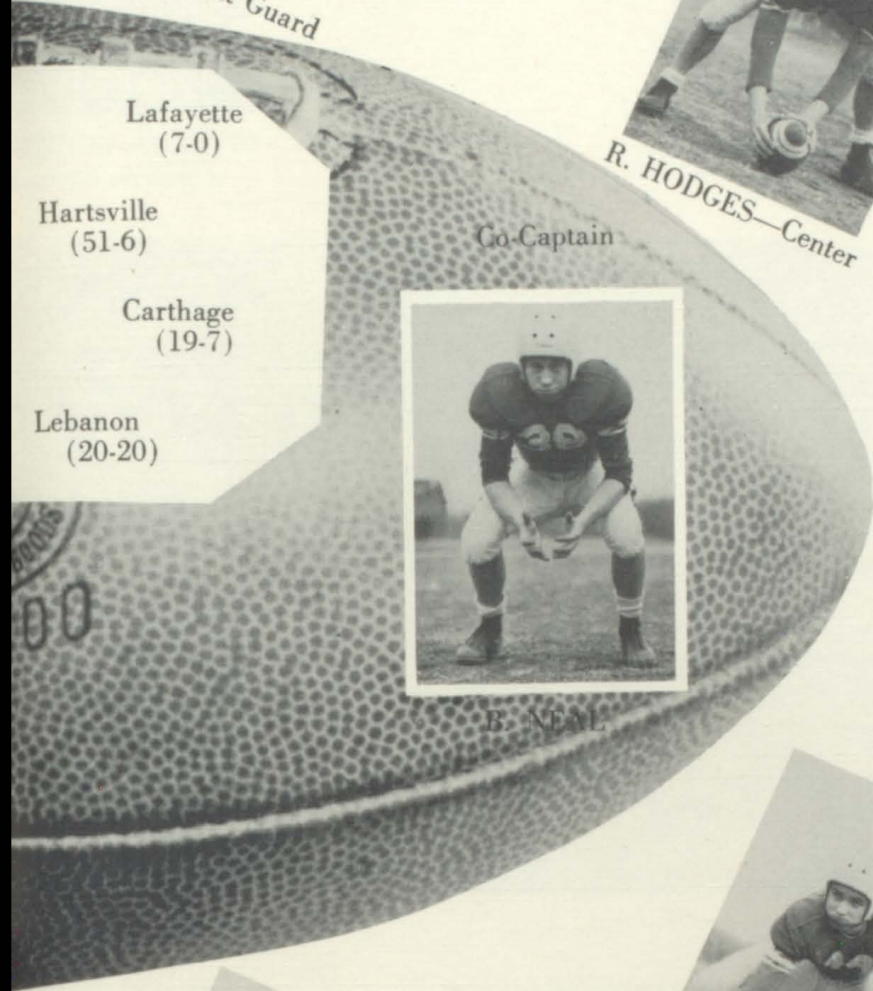
J. JOHNSON—Right End

Lafayette
(7-0)

Hartsville
(51-6)

Carthage
(19-7)

Lebanon
(20-20)





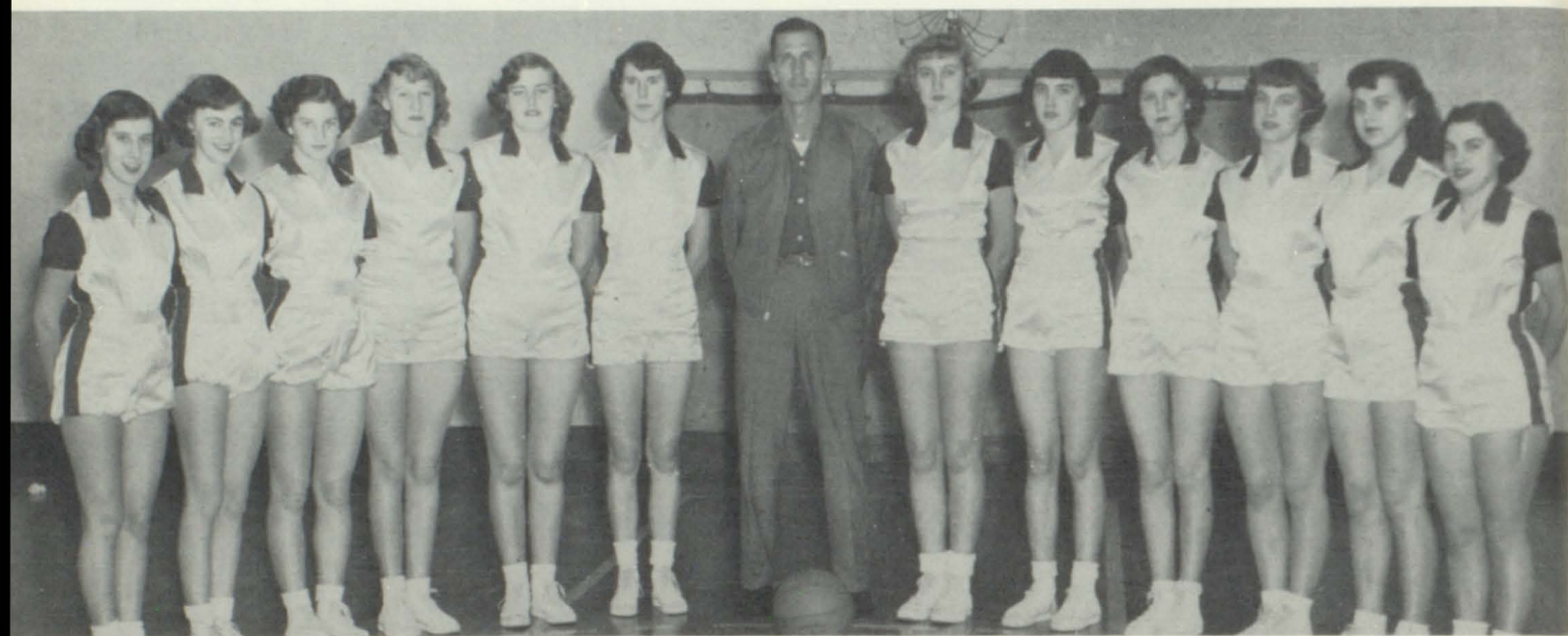
JOAN HARRIS
Captain



JUANITA WALLACE
Manager



DORIS BROWN
Alternate Captain



JOAN HUNTER

BARBARA HUNTER

JOYCE FREELAND

BARBARA FREEDL





HAROLD VAUGHN
Co-Captain



Coach ELKINS
Assistant Coach MR. HUNTER



JAMES WISEMAN
Co-Captain



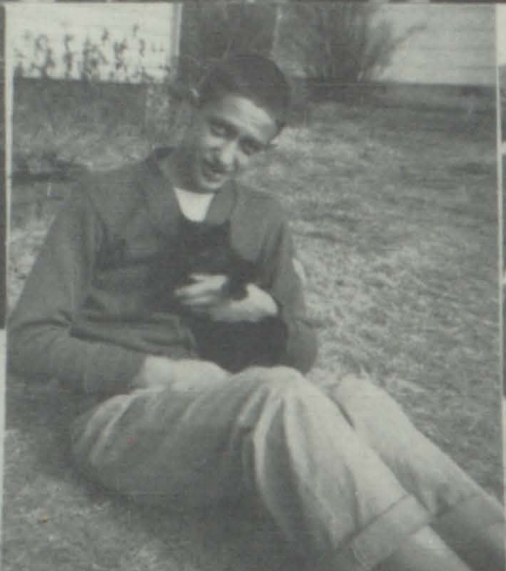
Coach McDONALD
Manager JOHNSON

RICHARD HUNTER

PERRY HARPER

J. C. THOMPSON





BLAND & GOAD IMP. CO.
 North Water Street
 Phone 1222 Gallatin
 FERGUSON TRACTORS & IMPLEMENTS

DOWNS
 BOOKKEEPING SERVICE
 Complete Tax Service
 Bookkeeping Accounting
 Gallatin, Tennessee
 GRADY W. DOWNS ON THE SQUARE

Compliments of
 AARON'S
 Gallatin, Tennessee

Compliments of
 GRAINGER and PEBBLES
 Gallatin, Tennessee

SPRINGFIELD PRODUCTION
 CREDIT ASSN.
 C. S. MITCHENER & GLORIA LOGAN
 Gallatin, Tennessee

CRESCENT
 FURNITURE COMPANY
 Two Stores New & Used
 GALLATIN, TENNESSEE

KATHERINE'S BEAUTY SHOP
 Roxy Building
 Phone 144 Gallatin

J. L. SMART'S GROCERY
 Portland, Tennessee

COX TOGGERY
 and
 COX STYLE SHOP
 Gallatin, Tennessee

KEMP MOTOR CO.
 Oldsmobile Sales & Service
 West Main Street Gallatin

HESTER CHEVROLET CO.
 New Cars & Trucks
 Sales & Service
 GALLATIN, TENNESSEE

Compliments of
 HANCOCK'S
 TOBACCO WAREHOUSE
 Gallatin, Tennessee

JOHNSON IMPLEMENT CO.
 Gallatin, Tennessee

DORRIS SERVICE STATION
 Gallatin, Tennessee

MODERN EQUIPMENT CO.
 International Harvester Dealer
 W. MAIN ST. GALLATIN

RANDY'S RECORD SHOP
 Gallatin, Tennessee



Compliments of
SIMPSON CO. SEED CO.
Franklin Kentucky

Compliments of
GALLATIN DRY GOODS CO.
Phone 178 Gallatin

HUNTER PLUMBING
& HEATING CO.
Gallatin, Tenn.

BARLOW ELECTRIC
Heating & Cooling Equipment
Phone 793 Gallatin, Tenn.

Compliments of
SUMNER CO.
COOPERATIVE CREAMERY
Gallatin, Tennessee

Compliments of
ROXY THEATER
& SWEET SHOP
Gallatin



GENERAL DINING ROOM
Parties A Specialty
J. L. FREELAND, Mgr. Phone 1544

ALBRIGHT TOBACCO WAREHOUSE
Gallatin, Tennessee

BROWN MILLING CO.
Oven Queen Flour Purina Chow
Phone 205 Gallatin

C. E. NORTHUP & SON
Lumber—Coal—Building Materials
GALLATIN, TENNESSEE

GALLATIN FLOWER SHOP
Gallatin, Tennessee

J. E. KELLEY & SON SEED CO.
Seed Cleaning
Wholesale & Retail Gallatin

Compliments of
GALLATIN TOBACCO
WAREHOUSE

R. C. O. & COMPANY
Gallatin, Tennessee

Compliments of
CRESCENT HILL
MILK SERVICE
Gallatin Tennessee

PERKINS DRUG CO.
Gallatin
EASTLAND MARKET
SUDDORTH FURNITURE CO.
C. & S. FURNITURE CO.
ANDERSON, YOWELL, & RIPPY
VOGUE BEAUTY SHOPPE
TRIANGLE SNACK BAR
BLUE BIRD BEAUTY SHOP
PERRY & SON GROCERY
SOUTHERN KITCHENS

ENGLAND'S SERVICE STATION

Gulf Accessories Gulf Oil

Phone 778 West Main Gallatin

SUMNER COUNTY NEWS

Gallatin, Tennessee

Compliments of
JAMES BROWN

Tax Assessor of Sumner County

Compliments of
GALLATIN MONUMENT
COMPANY

Gallatin, Tennessee

Compliments of
ED LANE

County Court Clerk Gallatin

Compliments of
LAYON BROWN

County Court Clerk of Sumner Co.

Compliments of
THE FARMERS' BANK

Member F.D.I.C.

PORTLAND, TENNESSEE

Compliments of
B. L. AND N.
GAS HEATING CO.

Gallatin, Tennessee

Compliments of
KRAFT FOOD CO.

Gallatin, Tennessee

CARMACK MOTOR CO.

New and Used Cars Phone 706

Gallatin, Tennessee

RANDOLPH HOUSE & CO.

Gallatin, Tennessee

Compliments of
PORTER W. WOMACK

Registrar of Sumner Co.

Gallatin, Tennessee

Phone 58

Franklin

HUGHES HARDWARE CO.

Oliver Farm Equipment
Appliances—Sporting Goods—Wire Fence
Field Seeds—Fertilizers

WADE MOTOR CO.

Only Authorized Ford Dealer
in Sumner County

Gallatin, Tennessee

MILLIKEN SWEET FEED MILLS

Custom Grinding and Mixing

Phone 446 Franklin, Ky.

Compliments of
OAKLEY & WOOTEN STUDIO

138 W. Main Gallatin

HUNT MOTOR CO.

For Better Motoring

Franklin, Ky.





Compliments of
JOE P. CLARK
 Franklin, Ky.

Compliments of
VAUGHN PONTIAC CO.
 Franklin, Ky.

Compliments of
DR. C. M. MARTIN
 Franklin, Ky.

Compliments of
DR. J. J. KELLY
 Franklin, Ky.

**PLANTERS
 LOOSE LEAF FLOOR**

Let us sell your one-sucker!
PAUL JACKSON HAL JACKSON

LUCAS SEED & FEED COMPANY
 Franklin, Ky.

Wholesale Field Seeds—Cleaners
 Wholesale Ground Lespedeza and
 Alfalfa
Hermitage Feeds

Compliments of
RED DEVIL BUTANE GAS CO., Inc.
 Bottled Gas—Gas Tanks—Dependable
SERVICE—PROMPT DELIVERY
 Phone 721 Franklin, Ky.

BRIGANCE SALES CO.
 Case Farm Machinery & G.M.C. Trucks
PARTS & SERVICE OLDSMOBILE
 Phone 650 Franklin, Ky.

Compliments of
 Planters **BURLEY Warehouse**
MARION RUTHEFORD LEWIS RUTHEFORD
 Franklin, Kentucky

SIMPSON CO.
 LOOSE LEAF FLOORS
 Burley and Air Cured

"The House That Satisfies"

Franklin, Ky.

D. W. BILLINGSLEA THOMAS HAYDON

Compliments of
 FRAZER & CO.
 Dry Goods Gallatin

PILOT KNOB LIMESTONE CO.

Phone 681 or 211W Gallatin

Compliments of
 DRAPER AND DARWIN
 Franklin, Ky.

BRIZENDINE
 AND LANE MOTOR CO.
 New & Used Cars & Trucks
 Franklin, Ky.

Compliments of
 SPEARS MACHINE CO.
 Franklin, Ky.

NEW FARMERS TOBACCO WAREHOUSE
 Franklin, Ky.
 J. N. Boaz—W. H. Moody—Tom Baird
 David S. Bradley—A. M. Downey—Mrs. Frank Etscorn



ROY GAUTHIER J. T. RUTHERFORD
 WEST END SEED CO.
 Field Seeds—Wholesale and Retail
 Phone 800J Franklin, Ky.

SOUTHERN STATES
 SIMPSON COOP.
 Feeds—Seeds—Fertilizer—Farm Supplies
 Franklin Kentucky

Compliments of
 YOUNG'S DEPT. STORE
 "For Better Values"
 Franklin, Ky.

MASSEY MOTOR CO.
 "Everything for the Car"
 Franklin, Kentucky

NATIONAL STORES
 Phone 47 Franklin, Ky.

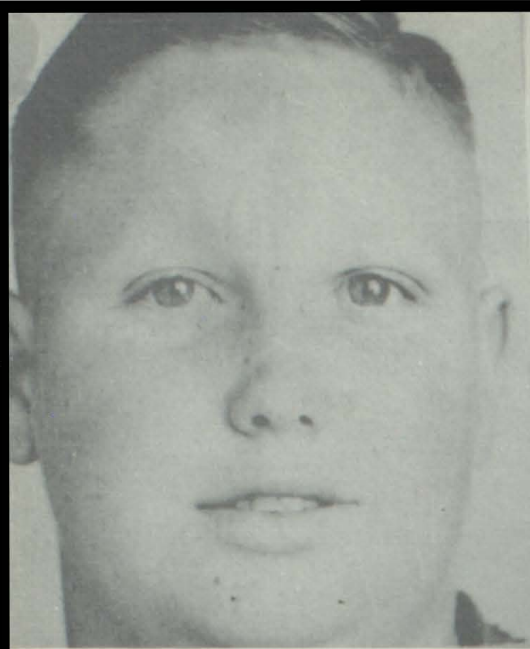
Compliments of
 SIMPSON COUNTY LUMBER CO.
 Franklin, Ky.

Compliments of
 LANIER CHEVROLET CO.
 Franklin, Ky.

CITY CAB
 Franklin, Ky.

You Can Always Buy With Confidence
 AT
 LERMAN BROTHERS
 "Known for Better Values"
 Franklin, Ky.

FRANKLIN SUPER MARKET
 Phone 23J
 Franklin, Kentucky



Compliments of
TENNESSEE FOODS, Inc.
 Portland, Tennessee
 H. L. W. HILL, Pres. K. GREEN, Sec.

PORTLAND LOCKER PLANT
 Meat Carving Groceries
 Lockers for Rent
 Phone 3901 Portland

WESTERN AUTO ASSOC. STORE
 Wizard Batteries—Davis Tires
 Phone 3939 Portland

Compliments of
ROSS GROCERY
 Phone 3800 Portland

**SHORT'S LAUNDRY
 and DRY CLEANERS**
 Phone 3850 Portland

KELLY'S ESSO STATION
 Atlas Tires—Batteries—Accessories
 Portland, Tenn.

C. S. DRIVER & SON
 Repair Shop
 Gallatin, Tenn.

Compliments of
CASH and CARRY GROCERY
 Phone 3920 Portland

Compliments of
HARRY CATO CAGE
 Insurance of all Kinds
 Phone 2221 Portland

GOADS SERVICE STATION
 Goodyear Tires—Batteries
 Texaco Products
 Phone 3432 Portland

MOORE MOTOR CO.
 DeSoto—Sales & Service—Plymouth
 Portland, Tenn.

ECONOMY SUPPLY CO.
 Furniture—Frigidaire—Appliances
 Phone 3777 Portland

Compliments of
V. G. HAWKINS
 Supt. of Sumner County Schools

PORTLAND COAL & SUPPLY CO.
 O. M. Moore
 Phone 3454 Portland

Compliments of
**PORTLAND
 PLANING MILL**
 Phone 2050 Portland

SWIFT'S ICE CREAM
 For Wholesome Food
 and Pure Delight!



WILKINSON AND WISEMAN
Funeral Home
Portland, Tennessee

Compliments of
H. M. GROTH COMPANY
Nashville, Tennessee

HODGES MACHINE COMPANY
Gas and Oil Parts and Accessories
Portland, Tennessee

STRICKLER MOTORS
Dealers in Ferguson Tractors
KAISER and HENRY J. Cars Franklin

SHANNON INSURANCE AGENCY
General Insurance
Office Next Door to Post Office
Phone 3754 Portland

Compliments of
THE FLOWER BASKET
Portland, Tennessee



L. G. BALFOUR COMPANY

Attleboro, Massachusetts

CLASS RINGS and PINS
DIPLOMAS
PERSONAL CARDS

COMMENCEMENT INVITATIONS
MEMORIAL PLAQUES
CLUB INSIGNIA

Representative: MR. IRVING HARRIS, P.O. Box 469, Jackson, Tenn.

Compliments of
BUTT TOBACCO CO.
Franklin, Ky.

GILLISPIE DRY GOODS CO.
"The House of Dependable Merchandise"
Established 1900 Franklin, Kentucky

Compliments of
FRANKLIN WHOLESALE CO.
Franklin, Ky.

YOKELY MACHINE CO.
GEO. YOKELY and SONS
National Cylinder Gas Welding Supplies
Phone 287 Franklin, Ky.

Compliments of
SIMPSON COUNTY BANK
Member of F.D.I.C.
Franklin, Ky.

MOORE'S DEPT. STORE
Dry Goods Shoes
Phone 2383 Portland

Chandler's

W. L. BENTLEY'S FIVE and TEN
Congratulations, Seniors!
Portland, Tennessee



Compliments of
WILLIAMS—JEWELER
Diamonds—Watches—Jewels
Phone 3944 Portland

Compliments of
JERNIGAN'S GROCERY
Phone 3412 Portland

BOOKER'S STORE
Ladies' and Men's Furnishings
Portland, Tenn.

APPLIANCE & ELECTRIC CO.
G.E. Television & Appliances
Phone 3931 Portland

Compliments of
YOUNG DRUG COMPANY
Your Prescription Store
Phone 2021 Portland

Compliments of
FRED BRIZENDINE
Portland, Tennessee

J. E. KERLEY and SONS

Hardware—Furniture—Rugs
Plumbing and Heating Supplies
Electrical Appliances—Television

PHONE 2051

PORTLAND, TENNESSEE

WILLIAM CLINE & SON
General Merchandise
4 Miles East of Portland
on Westmoreland Road

PORTLAND HARDWARE CO.
"A Good Store in a Good Town"
Plumbing—Appliances—Paints—Furniture

CONSUMER'S DRUG CO.
The Rexall Store
Phone 3727
PORTLAND, TENNESSEE

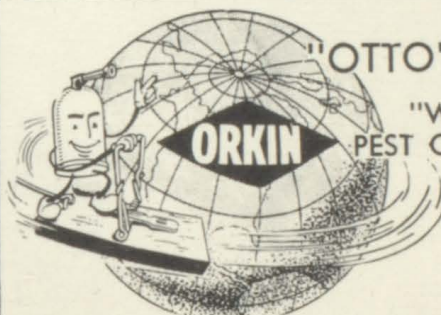
PORTLAND BILLIARDS PARLOR
REDDICK BARBER SHOP
PARKER SHOE SHOP
PAYNE BROS. SEED CO.
PORTLAND MEAT MARKET
ROSE BOWL CAFE

Compliments of
STARK'S STUDIO

Gallatin, Tennessee

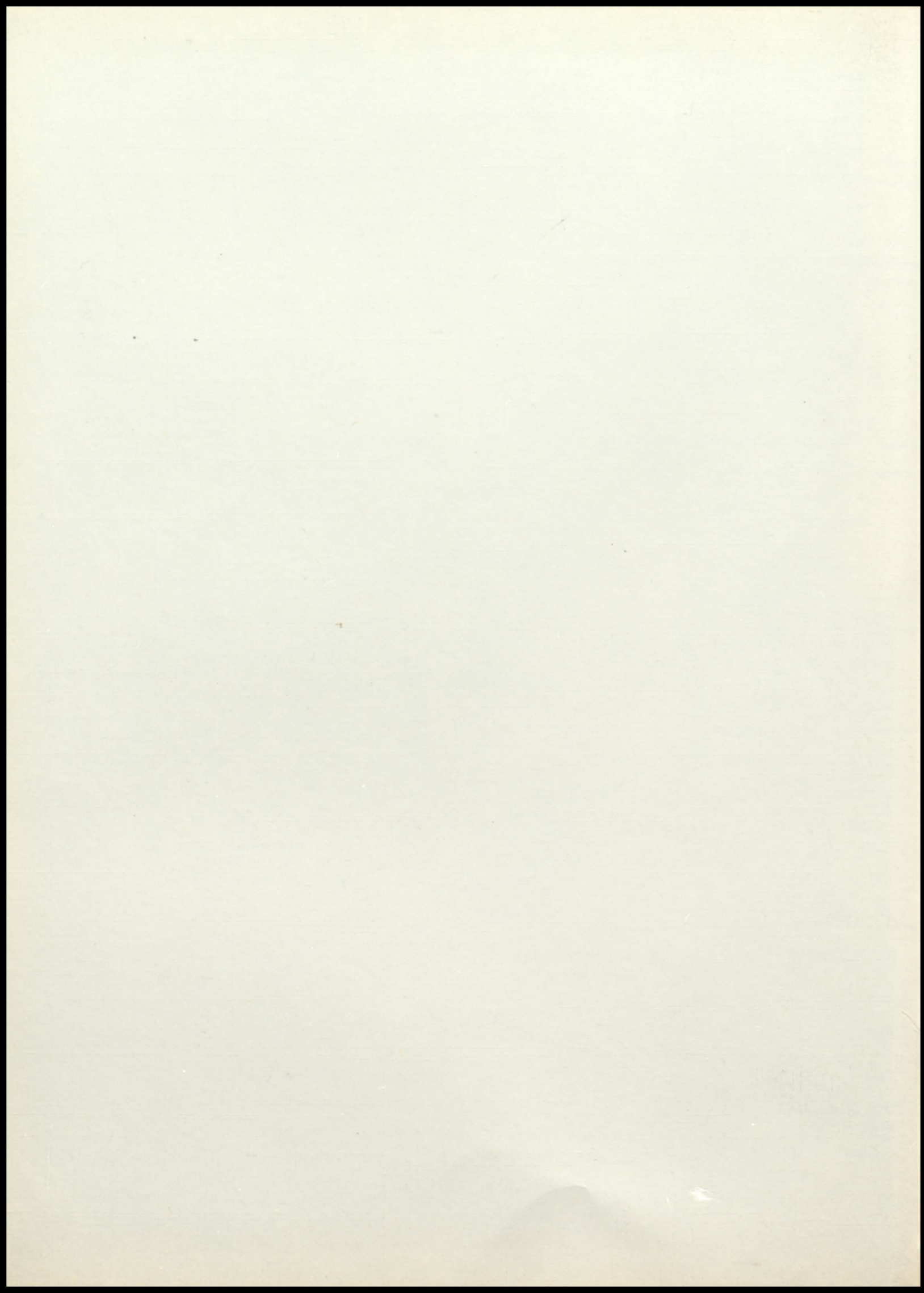
Patronize Our Advertisers

Compliments of
H. W. LAY CO.
Nashville, Tenn.

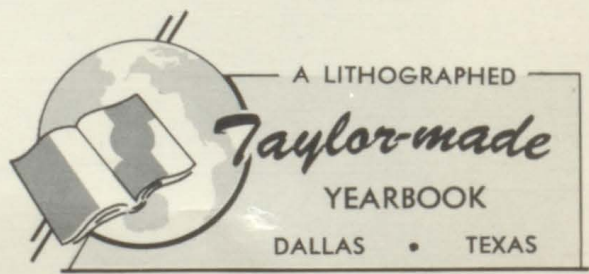


Compliments of
"OTTO" The ORKIN MAN
"WORLD'S LARGEST
PEST CONTROL COMPANY"







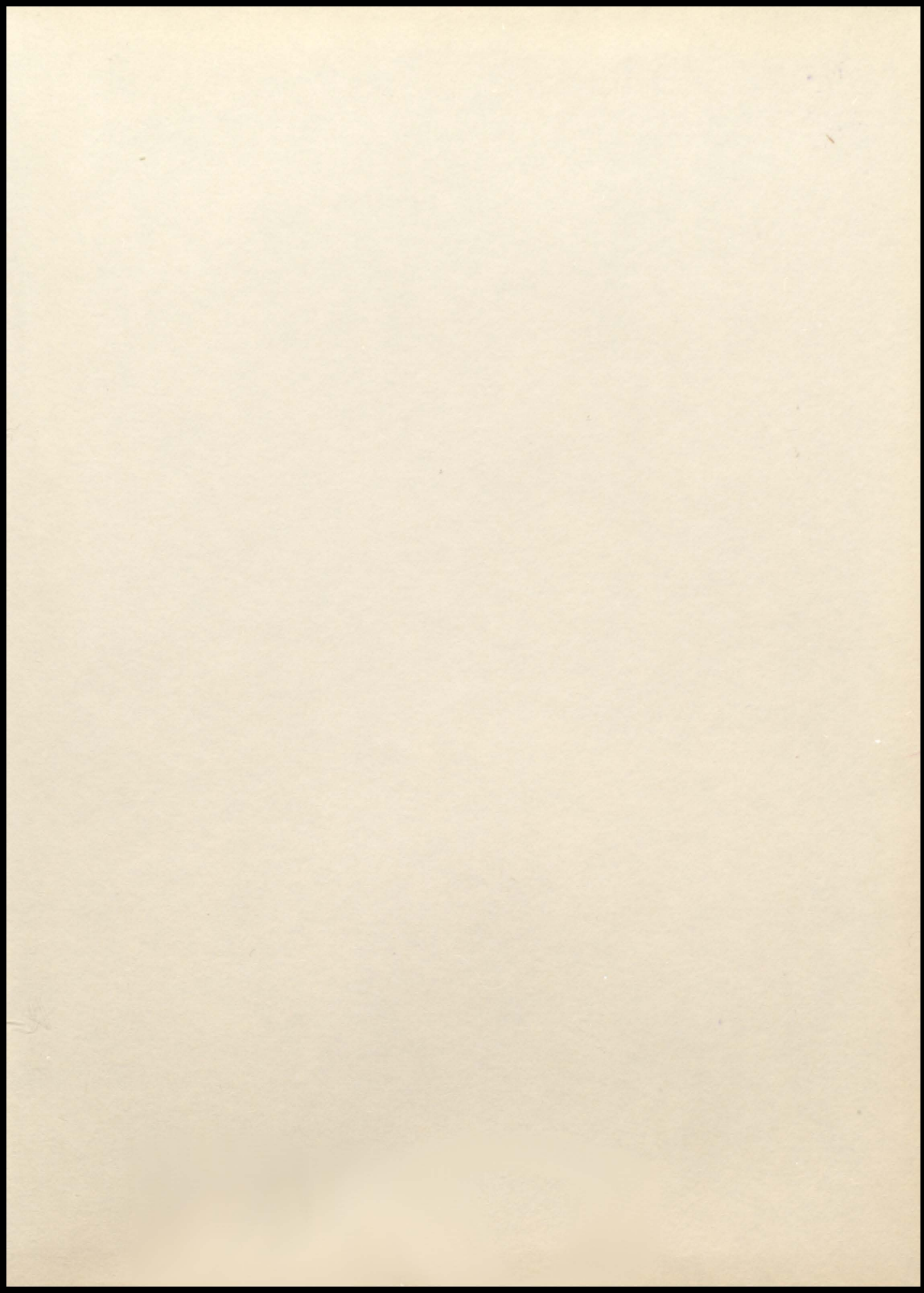


A LITHOGRAPHED

Taylor-made

YEARBOOK

DALLAS • TEXAS



Portland Clips

Gallatin 25 to 13

By J. B. LEFTWICH
State Correspondent
LEBANON—Two
nessee youths emerg
totaling 22 candidat
party nominations fr
1952 Volunteer Boys

Glover, Neal Run Wild As Portland Rolls 26-7

By RUSS MELVIN
TENNESSEAN Sports Writer

GALLATIN, Tenn. — An ale
Portland Purple Panther took ad
vantage of the breaks to blow a
fighting Gallatin eleven 25 to 13
here last night to remain unde
feated for the season.

Portland scored its first touch
down after recovering a fumble
in the Gallatin 15, took advan
tage of a 20-yard punt for a se

four minutes gone in the first
quarter as Jerry Reid raced 61
yards around his own right end
on the first Wave scrimmage
play. Charles Greer, the outstand
ing lineman on the field, booted
the extra point.

Just as the first quarter ended
John Collins flopped on a fumbled
punt return on the Gallatin 15.
Glover and Bobby Neal each car
ried the ball twice with Glover
going over from the two for the
tally.

The 20-yard Gallatin punt went
out of bounds on the Wave 23 late
in the second quarter. Glover then
circled right end for the touch
down to put the Panthers ahead
13-7 at the half.

Gallatin, which ripped the cen
ter of the Portland line at will,
marched for the tying touchdown
early in the third period with a
nine-yard pass, Jones to Normar
Herrod, for the tally.

Pos.—Portland (25)
LE—Denning
LT—Leath
LG—J. Collins
C—Hodges
RG—D. Collins
RT—Ausbrooks
RE—Johnson
QB—P. Harper
LB—Glover
RB—B. White
FB—Neal

Portland	26	13	0	12	—
Gallatin	7	0	0	0	—

Touchdowns: Portland—Glover 3, J. Co
lins, Gallatin—Reid, Herrod.
Extras: Portland—Glover, Gallatin
Greer.

Gallant Gallatin

First Downs	Portland	Gallatin
Yards Rushing	144	195
Yards Passing	12	35
Passes Attempted	2	6
Passes Completed	1	2

nd score, raced 23 yards with a
fumble for the third and 55 yards
with an intercepted pass for the
fourth.

Gallatin, a three touchdown un
derdog, stunned the unbeaten
Panthers with a touchdown in the
first four minutes of play. The
Green Wave came out to start the
second half and rolled up seven
consecutive first downs as they
ripped off 80 yards for a game
winning touchdown.

A determined defense stopped
Portland on the 20 late in the
fourth quarter and it appeared
that the two teams would battle to
a 13-13 deadlock. Fullback LeRoy
Grizzle burst through center for
an eight-yard gain but fumble
the ball as he was tackled. Por
tland's Glenn Glover scooped up
it all on the 23, shook off a tackl
er and raced for the touchdown th
atroke the game open.

The Green Wave stormed right
back following the kickoff on th
passing combination of Al Wac
sons to Woodson Dickerson. Jon
ary to the Portland 19. Jones
as spilled on the 36 trying at
her pass and with seconds r
aining in the game was tackle
ed just as he attempted anothe
erial. Guard Jim Collins grabbe
the ball in mid-air and raced f
ards for the final Panther touc
down.

Gallatin went ahead with in

Bobby Neal Second In Boy State Election

Bobby Neal, Portland Panth
football star, and the Johnson
nominee for governor of Bo
State, was defeated in the ele
tion by a last minute independe
"dark horse."

Neal, who recently reigned as
king of the Middle Tennessee Str
of the Portland football team and
a member of the varisty baske
ball team. He has won first plac
in the Cumberland Valley declam
ation contest, was runner-up in th
district meetin, and has won
Future Farmer contests.

Bobby Neal was sponsored by th
American Legion Post No. 75
Portland.

Glover Honored On All-State And Mid-State Teams

The Portland Panthers star half
back, Glenn Glover, raked up hon
ors for himself and for the school
last week when he was selected as
first string halfback on the Nash
ville Banner's 1952 All-Middle Ten
nessee eleven.

Also honored were Panthers Bob
by Neal and James "Catfish"
Leath, who made the third team
in this selection of the Banner.
Glover, high-scorer in the Com
munity and Valley Conference
ball 198 times.

Portland 26; Central 7

Portland's prowling Purple
Panthers unleashed their dreaded
Glenn Glover-Bobby Neal offense
last night, the Sumner countians
punishing Central with a 26 to 7
defeat on the Tornado's Field.

Between them Glover (144 yards
on 17 carries) and Neal (133 yards
on 22 carries) collected all of the
Panther scores. Neal got three,
Glover one.

Glover split the Tornado defenses
on 31 yards in the opening period
to put Portland in the lead. Neal
got his first TD in the second
period with a two-yard buck after

Ordeal by Glover, Neal

	Portland	Central
First Downs	17	14
Yards Rushing	286	146
Passes Attempted	3	3
Passes Completed	0	0
Yards Passing	0	0

Glover had set it up with a 34-yard
jaunt. In the fourth period Neal
hauled the ball 10 times for 48
yards, scoring from up close. Neal
also got the last score, going 53
yards on six tries, tallying from
the 11.

Central's lone score came in the
fourth after the Tornado recovered
a Glover fumble on the Central 32
late in the third. A 66-yard drive
was climaxed when Bobby Ran
dolph went over from the two.

Portland Tackle Jay Leath was
a tower of strength in the Panther
line. His recovery of a fumble
up the last score.

Randolph picked up 63 yards
on 13 carries to top Central's offens
ive.

Pos.—Portland (26)
LE—Denning
LT—Leath
LG—J. Collins
C—Hodges
RG—D. Collins
RT—Ausbrooks
RE—Johnson
QB—P. Harper
LB—Glover
RB—B. White
FB—Neal

Portland	26	7
Central	7	0

Portland Wins Doubleheader

Portland won a do
basketball game from
ville Friday night by
points.

The Portland boys won
and the fair lassies fr
won 39 to 30.

This was the last ga
the Christmas holidays.
game will be played a
town on Tuesday, Jan.
Portland (48) Henderson

F—Claiborne 4
F—Vaughn 26
C—Thompson 9
G—Callis 2
G—Wiseman 5
Halftime score: Portlan
dersonville 23.

Subs: Portland—Rich
ter 2; Hendersonville —

GIRLS
Portland (39) Henderson
F—Harris 6
F—J. Hunter 24
F—Brown 9
G—S. Hunter
G—Freddie
G—Freeland
Halftime score: Portlan
dersonville 18.

Quartet Wins First Honors Sunday, Dec. 1

The Portlandaires, a
composed of Herman
Johnny Alden, Buddy West
see Clemmons, won the fi
of \$100 in the recent annu
show sponsored by the
Lions Club.

Their accompanist, Shir
also shared in the prize
Meyers daughter of Dr. s
W. S. Sizer, won the thi
of \$25 with a vocal solo.

A great deal of talent
ner County was displayed
contest. The twelve entri
from Gallatin High Schoo
land High School, Hende
High School and White Hot
School.

The Gallatin Lions Club
ry pleased with the inter
played by these four sch
the county.

All the proceeds from th
show will be used by the
their Sight Conservation P

Joyce Freeland, daughter
Helen F. Webb of Portland,
crowned Football Queen of
Purple Panthers at half-tim
monies here Friday night.

The game with Hartsville
1952 Home-coming gam
Thursday night at seven o'c
festivities will begin with
Rally and Pep Parade wh
start at S.C.H.S.

Attendees to the queen
June Deasy, senior, daugh
Mr. and Mrs. Howard
Agnes DeJohn, junior, daugh
Mr. and Mrs. L. J. DeJohn
Young, junior, daughter of
Mrs. Leonard Young and
Wallace, daughter of Mr. an
Arthur F. Wallace. Attend
will be the cheerleading tea
their mascots composed of

New Scoreboard

Shine Memorial Others to Be Held At Banquet

members of the Portland
Football squad, their date
faculty of the Portland
were honored by the Farm
at the annual Football
held last Tuesday night
high school cafeteria.
s time Coach Douglas Mc
made the announcement
is resigning at the end of
next school year. This had
nored, but hopes were that
McDonald would continue in
ent position. He stated that
thoroughly enjoyed work
the faculty, the town and
which he had supervised
training. He also called
s "All-Americans" in re
to the winning team of

Portland Area Dairy Chain Calver Show In Show

Portland Area Dairy Chain Calver Show In Show
W. A. Dorris, David Kirkham, James E. Walters, Bobby Austin, and
Billy Kirkham.

Portland People Off To College

Portland Students are leaving
soon for their college work. Some
of them are going for their fresh
man year and some for other
years.
Those who have already left in
clude Larry Moore, who has en
tered the University of the South
at Sewanee, Tenn., Carey Lanier
who entered Belmont College in
Nashville, and Betty Hunter to U.T
Junior College in Martin, Tenn.
Those planning to attend T.P.I.
in Cookeville include Larry John
son, Stanley Nesbitt, Jerry Steven
son, Jordan Hunter, Winston Park
er, Jane Dye, Joe Jernigan, Wil
liam Clyde Riggs, Joe Collins, Wil
ma Creasy and Joanne Link.
Charles Hendrix, Jr., is going to

Portland Winners In Fat Calf Show

The annual fat calf show, spon
sored each year by the Young Far
mers and Homemakers Club of
Sumner County, was held in Gal
latin last Wednesday.

Prizes won by Future Farmers
and 4-H Club members from Por
tland and the surrounding area were
Allen Jones, with the reserve
grand champion of the show, an
Angus; Jerry Groves, Gordon
Meadow of Ft. Head, and Charles
Groves, all won prizes with their
Angus calves. Charles Groves won
again with his Hereford calf

Portland Co-Eds Elected At Tech

At a meeting last week of the
speech club at TPI, Miss Jane
Dye of Portland was elected presi
dent and Miss Joan Link, also of
Portland, was elected secretary.

Degrees At TPI

Miss Wilma Creasy and Roy Lee
Harper of Portland have just been
granted B.S. degrees at Tennessee
Polytechnic Institute, Dean A. W.
Smith announces.

meal will be served by mem
bers of the Portland P. T. A.
Thursday of last week. Shown are: rear row, Lt. Leslie Jett, Frank Swann, Norman Stovall, Johnny

By ROSS MELVIN

IF LEBANON expects to win tomorrow night's big battle with Portland, Coach Joe Atkinson is going to have to figure out a way to stop the "Touchdown Twins"—Glenn Glover and Bobby Neal.

In the last 13 games, Portland has been held to one touchdown just one time. The Panthers won that one anyway, 6 to 0. In the other 12 contests, Portland has tallied at least three touchdowns.

Last year Coach Atkinson figured out a way to beat Portland—match 'em touchdown for touchdown. And that's what the Blue Devils did, scoring first and then trading tallies the rest of the way. At the end, Lebanon was ahead 25-21 but Portland was down on the goal line ready to go over again as time ran out.

This year Lebanon has lost some valuable linemen and two of last year's starting backfield. But Fullback Clifton Tribble, the

man who outshone Neal and Glover in that one battle, and Quarterback David Robison are back to spark the attack.

In Portland's opening win over Murfreesboro, Glover scored four touchdowns as the Panthers romped 28-6. Last week Neal punched across three and Glenn one as Portland downed Nashville Central 26-7.

According to THE NASHVILLE TENNESSEAN Action Ratings, the Portland Purple Panthers are a slim one point choice over Lebanon in the top game of the week.

Sumner County Schools Join American Education

Schools all over the nation will celebrate American Education Week during the week of November 6.

Portland Panthers Tied By 1300 School To Salute The Graduates

1300 students are to participate in the 10th annual spring music festival of Middle Tennessee secondary schools, scheduled Thursday and Friday.

Sponsored by the Middle Tennessee Vocal association, this will be the first time the program has been held in Nashville.

Portland FHA Observes FHA Week

National Farm Homemakers Week is Nov. 2-8. The Portland FHA group began their observance of FHA week by attending the First Baptist Church in a group on Sunday, Nov. 2 and decorating the altar with flowers.

On Monday, the group decorated one of the windows at Young Drug Company, Tuesday the FHA had charge of the chapel program at S. C. H. S., on Wednesday each member of the faculty will be presented a rose, Thursday the group will have a spaghetti supper. Friday will be "No Gripe" day at S. C. H. S., under FHA direction.

Saturday the group will hold a bake sale to raise money for the various projects for the year.

1. Columbia	94.8
2. Isaac Litton	93.6
3. Shelbyville	92.2
4. Portland	88.0
5. Lebanon	87.9
6. Father Ryan	87.7
7. Du Pont	85.9
8. Murfreesboro	83.9
9. Cohn	83.0
10. Sparta	82.4
11. Clarksville	79.8
12. Nashville East	78.9
13. Cookeville	78.5
14. Springfield	78.4
15. Mount Pleasant	74.8
16. Manchester	74.6
17. Lynchburg	74.2
18. Carthage	73.9
19. Fayetteville	73.8
20. Franklin	
21. Hillsboro	
22. Huntland	
23. Loretto	
24. Franklin County	
25. West	
26. Goodlettsville	
27. Howard	
28. Tennessee Industrial	
29. Dickson	
30. Gallatin	

PTA Carnival To Be Saturday

The Portland Parent Teacher association is planning their annual P.T.A. Carnival for Saturday, September 27 at the High School.

regueson Picked American Farmer

Harris E. Ferguson, 21 son of Mrs. E. L. Ferguson, Route 2, Portland, was honored at the Coach Douglas McDonald of Portland dropped me a card this week pointing out that Glenn Glover picked up 382 yards against Murfreesboro as he scored four touchdowns to lead his Panthers to a 28-6 victory. He gained this tremendous

Portland Cagers Open Season With Westmoreland

The Portland Cagers will start their 1952-53 season Friday in the Portland Gymnasium against Westmoreland. There are 17 in the top game of the week play scheduled ending on Feb. 1. Coach Douglas McDonald of the Blue Devils deadlock 20-2. The Panthers, scoring a TD in each of the first three quarters, led the Lebanon eleven 20-0 until the final six minutes when the Blue Devils roared back to score three markers and two extra points.

Portland opened the scoring in the first period when Bobby Neal whipped over right guard after a march of 65 yards with Neal at his "Touchdown Twin", Glenn Glover, alternating in carrying the ball. Neal then bucked over center for the extra point.

Glover Sparks Portland Win

PORTLAND, Tenn. — Halfback Glenn Glover led the Portland Panthers to their fourth triumph of the season here last night, a 14-7 victory over the Carthage Owls.

Glover raced 27 yards for the first touchdown in the first period and plowed over from the one in the second quarter after a one yard plunge.

Carthage scored their lone TD early in the third period on a 35 yard pass from Cook to Kenneth Hackett. This ended a 70 yard Owl march.

Portland's final six-pointer came on a 15 yard run late in the third period by Glover. Bobby Neal made the lone Portland extra point. Dawson made the extra for the Owls.

Carthage (7)	
Hackett	0 0 7 0-7
Dillard	6 6 7 0-19
Gibbs	
Wright	
Farr	
Enoch	
Smita	
Myers	
Dawson	
Cook	
Goalsby	
Carthage	0 0 7 0-7
Portland	6 6 7 0-19
Touchdowns: Portland—Glover 3, Carthage—Hackett.	
Extras: Portland—Neal, Carthage—Dawson.	

Miss Ray Awarded Scholarship

Miss Patty Sue Ray, daughter of Mr. and Mrs. Fred Ray of Portland, is one of three young women from Tennessee who have been awarded scholarships by the Order of the Eastern Star to help finance their studies at Scarritt College this year. Each of these three is receiving \$200 from this fund.

Joan Link To Attend Annual ACP Meeting

Miss Joan Link, editor of the Oracle, student newspaper at Tennessee Polytechnic Institute, will represent that publication at the annual meeting of the Associated Collegiate Press in New York City Oct. 23-25, Guy Stewart, faculty adviser, announces.

Miss Link, daughter of Mr. and Mrs. Samuel Link of Fountain Head, Tenn., has been chosen

guards on the girls' team. Joyce Freeland, Barbara Freeland, Barbara Hunter, Patsy Johnson, Dot Dobbs and Barbara V. Scoring points for the team will be Captain Joan Hunter, Eunce Hodges, Juanita Wallace is manager girls and Jimmie Johnson boys.

The schedule for 1952-53 follows: December

- 5—Westmoreland, here
- 9—East Robertson, there
- 12—Hendersonville, there

- January
- 6—Coopertown, there
- 9—Westmoreland, there
- 13—Hartsville, here
- 16—Hartsville, there
- 20—Hendersonville, here
- 23—Gallatin, there
- 27—East Robertson, here
- 30—Lafayette, there

- February
- 3—White House, there
- 6—Coopertown, here
- 10—Gallatin, here
- 13—White House, here
- 17—Isaac Litton, here
- 24—Lafayette, here

Portland Loses Doubleheader By 1 Point Margins

Portland lost a doubleheader football game to East Robertson Tuesday night by the heart-breaking margin of one point, each. The East Robertson boys won 53 and their sisters took their game, 52 to 51.

The next game will be played Friday night at Hendersonville.

The Portland Quintet defeated the boys of Westmoreland High School 16 to 26 in a game held in the gym on Friday night. The score for the night was co-captain Harold Vaughn with 26 points.

The members of the Portland girls' team won by a good margin with the final score being 8.

- Portland (46) Westmoreland
- Claiborne 11
- Vaughn 26
- Thompson 4
- Wiseman 4
- Callis 2
- Halftime score: Portland 8, Westmoreland 4.
- Subs: Portland—Hunter (3)

- GIRLS
- Portland (34) Westmoreland
- J. Hunter 8
- Brown 17
- Harris 7
- Freeland
- Freddie
- B. Hunter

Panthers Rout Hartsville 51-6 On Homecoming

SCHS News

The Senior Class wishes to take this opportunity to thank the people of Portland who gave them magazine subscriptions. The campaign closed with the Seniors making \$594.57. There is now about \$1,230 in the bank to be used for the Senior trip next spring. "Catfish" Leath was the top salesman with \$101.25. Joyce Freeland and Frank Wilkes were second and third respectively. Prizes of \$5, and \$2 were given.

The school was very proud of the football squad Friday night when they met Gallatin. The seniors are especially commended since this was their last game. The sportsmanship of the entire team could not have been better.

The Beta Club is sponsoring a program to help failing students. Anyone who has an average of 90 or above is eligible to help. This program should help keep grades up and failures few, if any. Advantage is taken of it.

Congratulations to Juanita Street whose essay "Goals in Life," appeared in the November issue of the Beta Club Journal.

Vandy Gets Portland Stars

Glenn Glover and Bobby Neal, two of the outstanding backs in Middle Tennessee, yesterday signed grants-in-aid with Vanderbilt university.

The signing of Glover came as a big surprise to many people because as late as Saturday night it was reported he was headed for Tennessee.

Glover was named to THE TENNESSEAN All-Midstate team for two straight years, both times being named honorary captain for drawing the most votes from the coaches. Besides being a great offensive threat, the Portland high athlete also backs up the line and is considered one of the finest defensive players in the area.

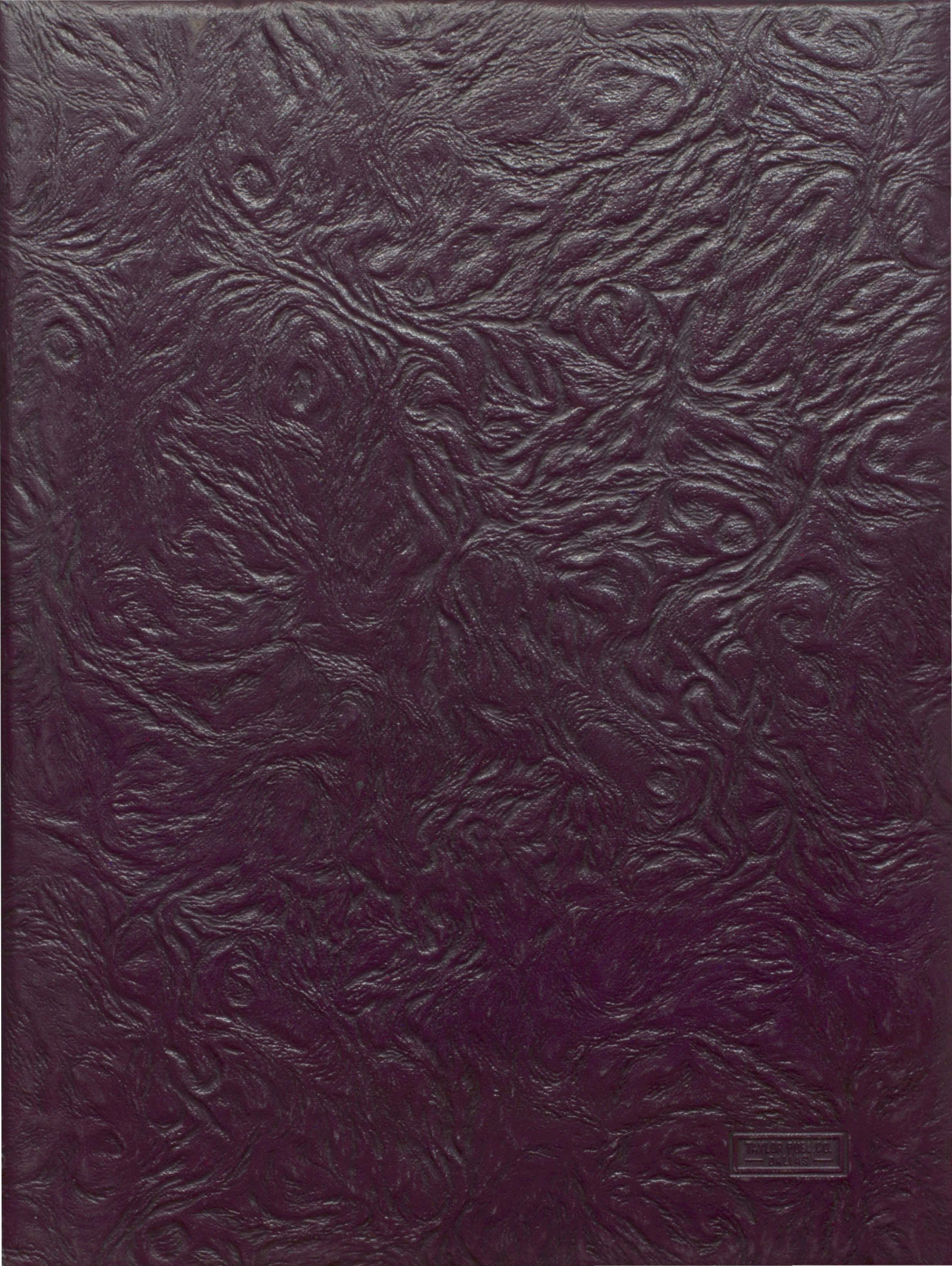
Neal and Glover teamed for five years to give Portland the best 1-2 punch of any team in the Midstate.

The Portland Panthers chalked up their sixth win of the season last Friday night with a 51 to 6 win over Hartsville in their 1952 Homecoming game.

It was a gala homecoming for the Panthers with the alumni wearing white cards with purple and white ribbons and the crowning of the queen, Miss Joyce Freeland by the co-captains, Glover and Neal, at half-time.

Once again it was the Touchdown Twins, Glenn Glover and Bobby Neal, who led the Portland onslaught. Glover averaged 23 yards per run and Neal 14. Glover broke loose on three long touchdown runs of 30, 35 and 70 yards, and Neal tallied twice with runs of 16, and 4 yards.

Carl Pike, the Portland quarterback, scored once on a 40-yard run after picking up a Hartsville fumble. Bobby White caught a 10-yard pass from Glover to score once and Denning raced 30 yards to pick up a reverse.



TAYLOR & FRANCIS
LONDON