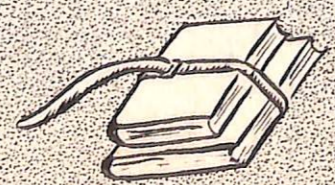


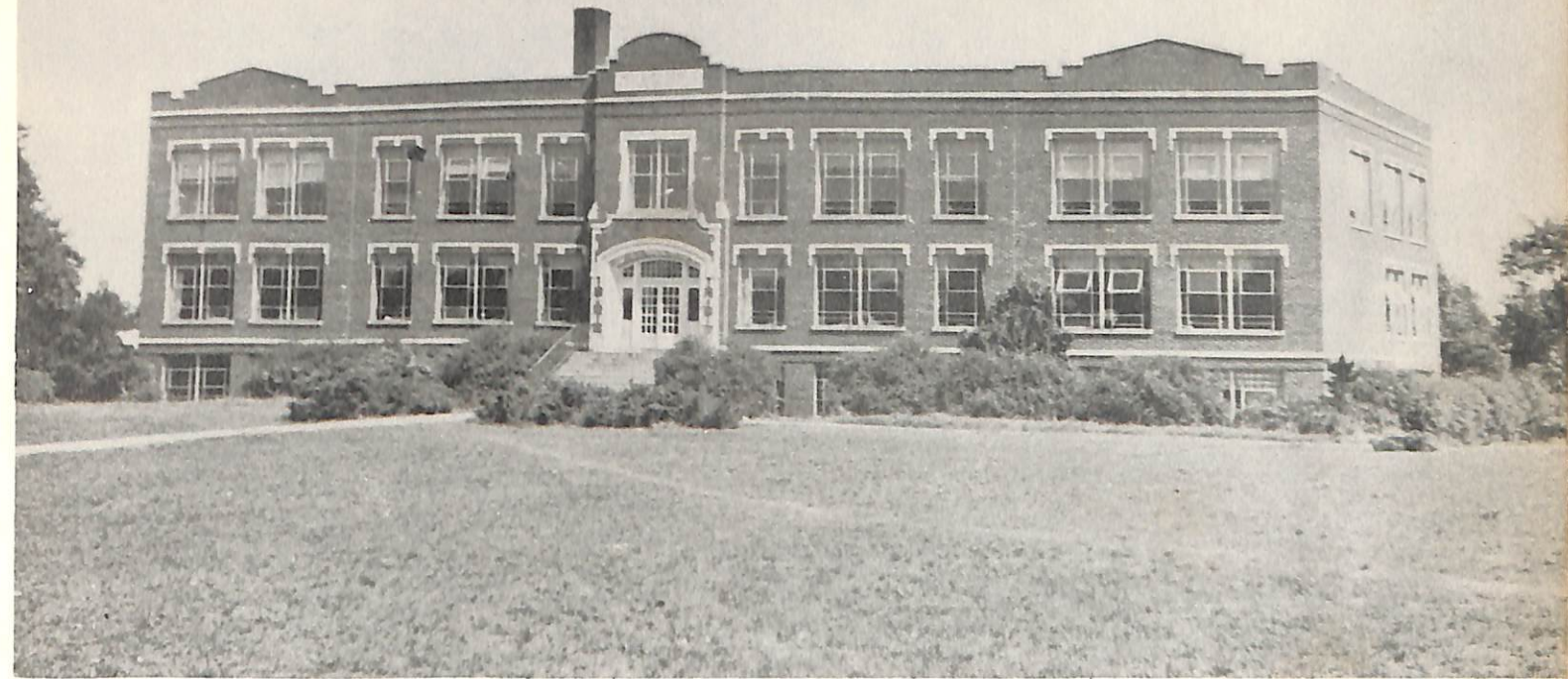
THE PANTHER 49

Jane Bailey

EX LIBRIS



donated by  
Jane Heath 2021



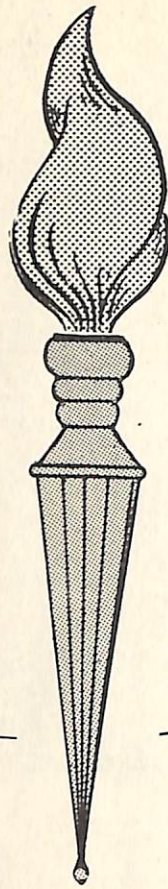
# THE PANTHER

Published by  
THE BETA CLUB  
Sumner County High School

Jean Pond, Editor

Carol Dorris, Business Manager  
Joan Link, Assistant Editor

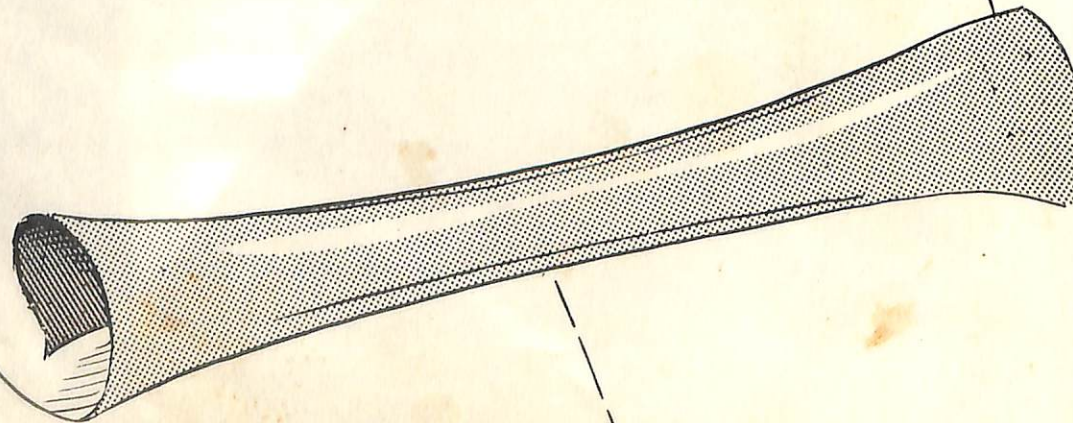
# Foreword



## FOREWORD

It is with pleasure and pride that the members of the Beta Club present the fourth edition of the "Panther." To you who own and cherish this book, may it serve to turn the spot light of truth on your past, fire you with the hope and inspiration of your present, and ever rekindle the sparks of friendship and love in your future.

*- Editor*



# DEDICATION

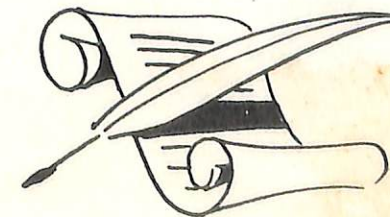


Florence Hunnicutt, A.B., M.A.  
English

Western Ky. State College  
University of Kentucky  
Beta Club Sponsor  
Yearbook Sponsor  
Debate Co-sponsor

In deep appreciation of her unfailing interest, her invaluable aid, and her inspiring guidance not only in our school publications, but in every endeavor pertaining to the upbuilding of our Alma Mater, we, the Senior class, affectionately dedicate this edition of the "Panther" to our beloved teacher, Mrs. Florence Hunnicutt.

It is largely through her efforts and interest that Sumner County High School has been able to maintain four excellent yearbooks. Through the years we have ever found her to be a wise counselor and a patient and sympathetic friend.





William M. Hunter, B.S., M. A.  
*Superintendent of Portland Schools*  
 University of Tennessee  
 Cumberland University  
 Tenn. Polytechnic Institute  
 Peabody College

Dear Students,

It is encouraging to see the manner in which you have so pleasantly gone about your work during the school year. There is every sign of achievement among our student body and your attitude and cooperation is surpassed by none. You will profit much by having participated fully in school life.

The experiences of your work here will be of untold value to you in whatever field of work you may enter in later life.

It is my sincere wish that your school days have been profitable and pleasant and that your future will be filled with happiness.

William M. Hunter

Lawrence Bradley, B. S.  
*Science*

Middle Tenn. State College  
 David Lipscomb  
 Junior Sponsor

Mrs. Wilbern Dorris, B.S.  
*Vocational Home Economics*

University of Tennessee  
 Junior Sponsor  
 F.H.A. Sponsor

Herbert Gregory, A.B.  
*Mathematics*

Western Ky. State College  
 Sophomore Sponsor

Mrs. Luther Hill, B.S.  
*Social Science*

English  
 Wesleyan College  
 Emory University  
 Peabody College  
 University of Georgia  
 Senior Sponsor

Mrs. Earl Jernigan, B.S.  
*Social Science*

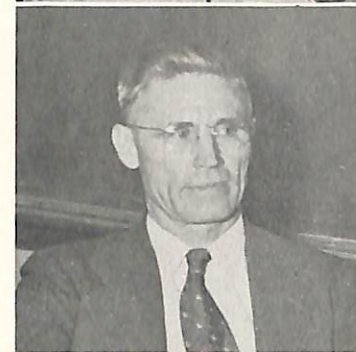
Spanish  
 Middle Tenn. State College  
 Freshman Sponsor



H. A. Buntin,  
*Vocational Agriculture*  
 University of Tennessee  
 Middle Tenn. State College  
 Bowling Green Business Univ.  
 F.F.A. Sponsor



Mrs. Duncan Empson,  
 A.B.  
*Librarian*  
 Western Ky. State College  
 Tennessee College  
 Freshman Sponsor



Mrs. W. T. Hardison  
*Dramatics*  
 Cumberland University  
 N.F.L. Sponsor  
 Debate Co-Sponsor  
 Pep Squad Sponsor



Mrs. William Hunter, B.S.  
*Commercial*  
 Peabody College  
 Tenn. Polytechnic Inst.  
*Purple Herald* Sponsor  
 Sophomore Sponsor  
 Sec. & Treas. of School Finances



Douglas McDonald, B.S.  
*Coach*  
 Physical Education  
 Tenn. Polytechnic Inst.

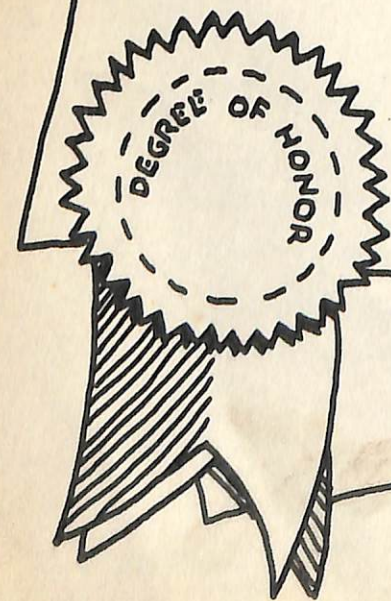


Mrs. O. M. Moore, A.B.  
*Languages Mathematics*  
 Wesleyan College  
 Senior Sponsor

# Honor Roll

First Semester

Alberta Street.....	98.50	Billy Wilson.....	94.80
Marie Shirrell.....	98.25	Anne Brown.....	94.75
Nancy Fowler.....	98.00	Jane Briley.....	94.50
Joan Link.....	98.00	Sophia Cummings.....	94.50
Mai Rose Bowers.....	97.75	Rebecca Trammell.....	94.50
Patty Sue Ray.....	97.75	Thelma Wakefield.....	94.50
Juanita Dye.....	97.50	Charlie Jones.....	94.25
Nadine Claiborne.....	97.25	Mary Jo Perdue.....	94.25
Wanda Kirkham.....	96.75	Robert Brown.....	94.00
Billie Petty.....	96.50	Joanne Callis.....	94.00
Betty Dye.....	96.00	Jean Jernigan.....	94.00
Frank Empson.....	96.00	Joyce Jones.....	93.75
Rebecca Hurt.....	95.75	Peggy Franklin.....	93.50
Jean Pond.....	95.75	Joyce Woodard.....	93.50
Jane Dye.....	95.50	Mary Callis.....	93.25
Jordan Hunter.....	95.50	Wanda Ray.....	93.25
Clyde W. Riggs.....	95.50	Carol Dorris.....	93.00
Carey Lanier.....	95.25	Margaret Schablik.....	93.00
Wilma Creasey.....	95.00	Ernestine Trammell.....	93.00



## Class Officers



Robert Lane  
President

Jean Jernigan  
Treasurer

Bill Allen  
Vice-President

Carol Dorris  
Secretary

# Seniors



**BILL H. ALLEN**  
*Bachelor of Ugliness*

Social Science

Science Club 1; Nature Club 2; F. F. A. 1; Football 1; Basketball 1; Co-Capt. Basketball Team 3; All Conference Second Team 3; Vice-Pres. of Class 4; Language Club 4.

**JEAN BARNARD**  
*Prettiest*

Commercial

Victory Corps 1, 2; Glee Club 1, 2; Basketball 3; Commercial Club 4; *Herald* Staff 4; Attendant to F. F. A. Queen 3.



**BESSIE BINION**  
*Most Unusual*

Commercial

F. H. A. 4; 4H Club 1; Glee Club 2.

**WINNIE KAY BOLDING**  
*Jolliest*

Social Science

Glee Club 1; Basketball 2, 3; Pep Squad 1, 2; Victory Corps 1, 2; Softball Squad 1.



**MAI ROSE BOWERS**  
*Most Ambitious*

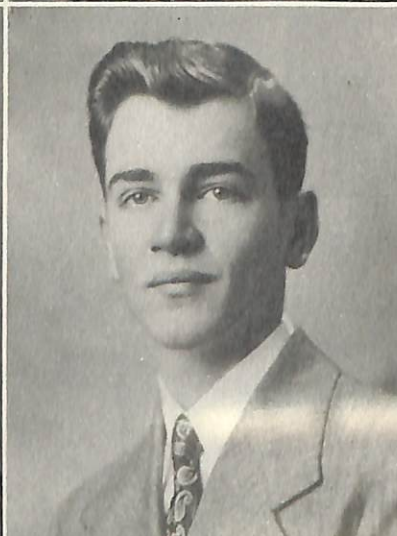
Science

Vice-Pres. Class 1; Beta Club 2, 3, 4; N. F. L. 3, 4; Thespian Troupe 4; Class Will; Language Club Treas. 4; Victory Corps 1, 2; *Panther* Staff 2, 3, 4; *Herald* Staff 2, 3; Science Club 4.

**MELVIN BRILEY**  
*Most Handsome*

Social Science

Class Sec-Treas. 1; Mr. Sophomore 2; Class Sec. 2; N. F. L. 1, 2, 3, 4; Thespian Troupe 3, 4; F. F. A. 1; Victory Corps 1, 2; Commercial Club 4; *Herald* Staff 4; Pep Squad 1.



**JERIAL A. CARUTHERS**  
*Most Likable*

Social Science

Pep Squad 1; Victory Corps 1, 2; F. F. A. 1; Chesterfield Club 1, 2, 3, 4.

**LOREE COLE**  
*Most Alert*

Home Ec.

Victory Corps 1, 2; N. F. L. 1, 2, 3, 4; F. H. A. 3, 4; Thespian Troupe 3, 4; Commercial Club 4; *Herald* Staff 4; Class Tournament 2, 3.



**WILMA CREASEY**  
*Most Executive*

Languages

Class Poet; N. F. L. 1, 2, 3, 4; Pep Squad 1, 2; Beta Club 2, 3, 4; Beta Club Treas. 3; Beta Vice-Pres. 4; *Herald* Staff 2, 3; *Panther* Staff 2, 3, 4; Thespian Troupe 3, 4; Thespian Sec. 3, 4; Science Club 4; Language Club 4.

**SOPHIA CUMMINGS**  
*Most Graceful*

Mathematics

Beta Club 2, 3, 4; Beta Club Sec. 4; N. F. L. 1, 2, 3, 4; N. F. L. Treas. 3, 4; Thespian Society 4; Class Pres. 1; Class Vice-Pres. 2; Class Treas. 3; Cheerleader 4; Science Club 4; *Herald* Staff 2, 3, 4; *Panther* Staff 2, 3, 4; Victory Corps 1, 2, 4H Club 1, 2, 3, 4; Softball Team 2.

**KENNETH DAVENPORT**  
*Neatest*

Social Science

Commercial Club 4; *Herald* Staff 4; Victory Corps 1, 2; F. F. A. 1.

**CAROL DORRIS**  
*Most Popular*

Languages

N. F. L. 1, 2, 3, 4; Thespian Society 3, 4; Beta Club 2, 3, 4; *Panther* Business Manager 2, 4; *Herald* Staff 2, 3; *Panther* Staff 2, 3, 4; Class Sec. 3, 4; Language Club 4; Cheerleader 4; Football Queen 4; Pep Squad 1, 2; Basketball 2.

**JUANITA DYE**  
*Most Efficient*

Languages

Salutatorian; Victory Corps 1, 2; Glee Club 1; N. F. L. 2, 3, 4; Thespian Society 4; Beta Club 2, 3, 4; *Panther* Staff 2, 3, 4; *Herald* Staff 2, 3, 4; Co-Editor of *Herald* 4; Commercial Club 4; Keyboard Club 3, 4; Keyboard Club Sec. 3.

**HARRIS E. FERGUSON**  
*Most Dependable*

Agriculture

F. F. A. 1, 2, 3, 4; F. F. A. Reporter 1, 2, 3; F. F. A. Judging Teams 1, 2, 3, 4; Delegate to F. F. A. Convention 1, 2, 3; Awarded State Farmer's Degree, Beta Club 3, 4; *Panther* Staff 3, 4; *Herald* Staff 3.

**WILMA FLEMING**  
*Most Romantic*

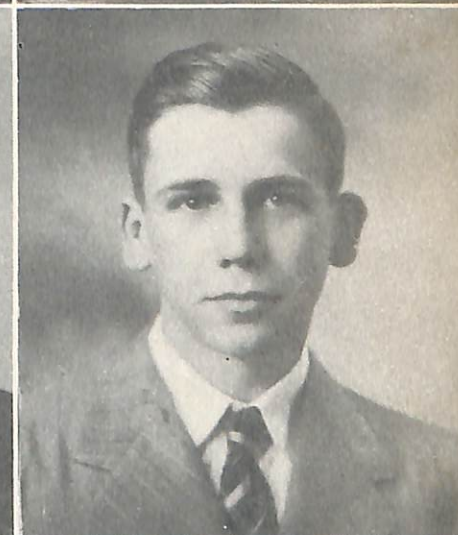
Home Economics

Pep Squad 1; Glee Club 1, 2, 3; Glee Club Treas. 2, 3; Victory Corps 1, 2; F. H. A. President 3, 4; Commercial Club 4; Class Tournament 2; N. F. L. 1, 2, 3, 4; Thespian Society 4; *Herald* Staff 4.

**NOEL GILLIAM**  
*Wittiest*

Science

Band 1, 2; F. F. A. 1; Victory Corps 1, 2; Beta Club 4; Science Club 4; Language Club Vice-Pres. 4; Pep Squad 1, 2; *Panther* Staff 4.





WANDA HARDIN  
*Cutest*

Home Economics

Home Ec. Club 1, 2, 3, 4; Science Club 1, 2; Girls Athletic Assn. 1, 2; Peabody Art Club 3; Glee Club 1, 2, 3; Commercial Club 4; *Herald* Staff 4; N. F. L. 2; Band 1, 2.

MARTHA HARPER  
*Quietest*

Commerical

Music 1, 2; *Herald* Staff 4.



BETTY SUE HARRIS  
*Most Athletic*

Social Science

Softball Squad 1; Victory Corps 1, 2; Basketball 1, 2, 3; Captain 3; Pep Squad 2; *Herald* Staff 4; Athletic Medal 3; Commerical Club 4.

JEWEL HENSON  
*Most Likely To Succeed*

Commercial

Pep Squad 1; Class Tournament 1, 2, 3; Victory Corps 1, 2; Softball Team 1, 2; *Herald* Staff 4; F. H. A. Reporter 4; Attendant to Football Queen 4; Commercial Club 4.



DONALD HODGES  
*Best Sport*

Mathematics

F. F. A. President 1; Victory Corps 1; Pep Squad 1; Band 1; Football Squad 2; Basketball 3; F. F. A. 1, 2, 3, 4.

JEAN JERNIGAN  
*Sweetheart of S. C. H. S.*

Languages

Pep Squad 1; N. F. L. 1, 2, 3, 4; Beta Club 2, 3, 4; *Herald* Staff 2, 3; Cheerleader 2, 3, 4; Beta Club Vice-Pres. 3; Football Queen 3; Thespian Society 3, 4; Vice-Pres. Thespian Society 3, 4; Beta Club President 4; Science Club 4; Language Club 4; *Panther* Staff 2, 3, 4.



JOE E. JERNIGAN  
*Youthful*

Science

F. F. A. 1; Victory Corps 1; Band 1; Pep Squad 1, 2; N. F. L. 2, 3, 4; Thespian Treasurer 3, 4; Science Club 4.

HILMAN F. KEY  
*Most Mischievous*

Mathematics

Victory Corps 1, 2; F. F. A. 1, 2; Pep Squad 2; Language Club 4; Science Club 4.

IMOGENE KIRKHAM  
*Most Conscientious*

Commercial

Home Ec. Club 3, 4; Commercial Club 4; Softball Team 1, 2; *Herald* staff 4; Class Tournament 3.

RUTH KNOWLES  
*Most Affectionate*

Home Economics

Pep Squad 1; Glee Club 2, 3; Victory Corps 1, 2; F. H. A. 4; Science Club 4; Class Tournament 1, 2, 3; Softball Team 1, 2.

GLORIA LAMBERTH  
*Most Original*

Mathematics

Pep Squad 2; Beta Club 4; Commercial Club 4; Basketball Mgr. 3; Victory Corps 1, 2; *Herald* Staff 4; *Panther* Staff 4.

W. J. LAMBERTH  
*Best Natured*

Social Science

F. F. A. 1, 2, 3, 4; Victory Corps 1, 2.

ROBERT LANE  
*Most Likely To Succeed*

Social Science

Football 3, 4; All Conference End 4; Basketball 3; Most Representative Junior 3; Band 1; Victory Corps 1, 2; Pep Squad 2; Language Club 4; Class President 3, 4.

BETTY LEGGE  
*Friendliest*

Social Science

Science Club 1, 2, 3; Music Club 1, 2, 3; Glee Club 4; Sec. Glee Club 4; Pres. Commercial Club 4; Home Ec. Club 1, 2, 3; *Herald* Staff 2; Choral Club 1, 2; Class Sec. 2; Sociology Club 1; *Herald* Business Mgr. 4; Commercial Award 3.

BETTY ANN LINK  
*Happiest*

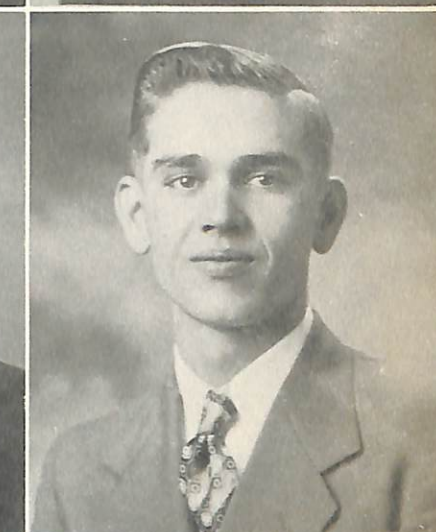
Social Science

Glee Club 1, 2; N. F. L. 2, 3, 4; Thespian Society 3, 4; Victory Corps 1, 2; Language Club 4; Commercial Club 4; *Herald* Staff 4.

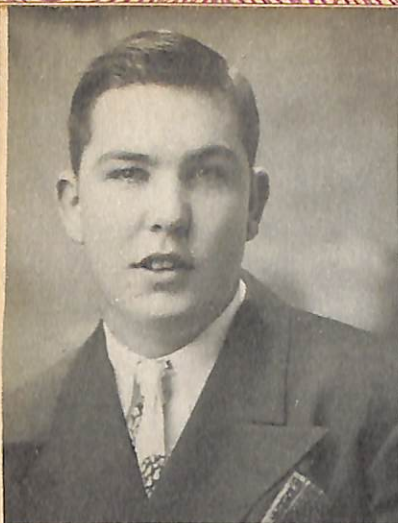
JOAN LINK  
*Most Versatile*

Mathematics

Class Prophecy; Beta Club 2, 3, 4; N. F. L. 2, 3, 4; Thespian Society 3, 4; Language Club 4; Science Club 4; Debate Team 2, 3, 4; Glee Club 1, 2; Majorette 1; *Panther* Staff 2, 3, 4; *Herald* Staff 2, 3; Asst. Ed. *Panther* 4; Pep Squad 1, 2; Pres. Language Club 4.







**GERALD McMURTRY**  
*Most Happy-go-lucky*

Mathematics  
F. F. A. 2, 3; Football 4; All Conference Tackle 4.

**PATTIE SUE RAY**  
*Most Intellectual*

Languages  
Valedictorian; Victory Corps 1, 2; Glee Club 1; N. F. L. 1, 2, 3, 4; Thespian Society 3, 4; Thespian Clerk 3, 4; Beta Club 2, 3, 4; Beta Club Sec. 3; Beta Club Treas. 4; Panther Staff 2, 3, 4; Herald Staff 2, 3, 4; Co-Editor of Herald 4; Commercial Club 4; Keyboard Club 3, 4; Keyboard Club President 3; Music Medal 3; Scholarship Medal 2.

**RUSSELL RAY**  
*Most Courteous*

Mathematics  
N. F. L. 2, 3, 4; Thespian Society 3, 4; F. F. A. 1, 2, 3, 4; F. F. A. Secretary 2.

**WANDA SNOW RAY**  
*Most Serious*

Commercial  
Basketball 1, 2, 3; C. V. C. First Team 1, 2, 3; All Star Team 2; Unit III Tournament First Team 3; Commercial Club 3, 4; Commercial Club Sec. and Treas. 4; Home Ec. Club 1, 2, 3; Home Ec. Club Reporter 1, 2; Herald Staff 4; Panther Staff 4; Beta Club 4; Glee Club 1, 3.

**MARIE SHIRRELL**  
*Most Capable*

Commercial  
Home Ec. Club Historian 3, 4; Commercial Club 4; Softball Team 1, 2; Herald Staff 4; Class Tournament 1, 2, 3.

**JAMES STORY**  
*Most Agreeable*

Social Science  
F. F. A. 1, 2; Commercial Club 4; Herald Staff 4; Football Squad 2, 3; Victory Corps 1; Chesterfield Club 1, 2, 3, 4.

**HERSHELL STOUT**  
*Most Talented*

Social Science  
N. F. L. 2, 3, 4; Thespian Society 3, 4; Glee Club 1; Chesterfield Club 1, 2, 3, 4; F. F. A. Judging Team 4.

**EDWIN TARRENTS**  
*Most Patient*

Agriculture  
F. F. A. 1, 2, 3, 4; F. F. A. Treas. 2; F. F. A. Judging Teams 1, 2, 3, 4; Commercial Club 4; Herald Staff 4; Victory Corps 1, 2.

**CHRISTINE DOUGLAS TAYLOR**  
*Most Kind*

Home Economics  
F. H. A. 3, 4; Victory Corps 1, 2; Commercial Club 4.

**BILLY H. WEST**  
*Most Athletic*

History  
F. F. A. 1, 2; F. F. A. President 2; Football 2, 3, 4; Co-Captain 4; Band President 1; Basketball 3; Victory Corps 1, 2; Class Vice-President 3.

**MARY DEAN WILKES**  
*Most Musical*

N. F. L. 2, 3, 4; Thespian Society 3, 4; Glee Club 1, 2, 3, 4; Glee Club Sec. 3; Language Club 4; Commercial Club 4; Herald Staff 4; Band 1, 2; Victory Corps 1, 2; Pep Squad 1; F. H. A. 3.

**JAMES ALVIN WILLIAMS**  
*Most Sincere*

Science  
F. F. A. 1, 2, 3, 4; F. F. A. Judging Teams 2, 3, 4; Football 3, 4.

**BILLY W. WILSON**  
*Most Zealous*

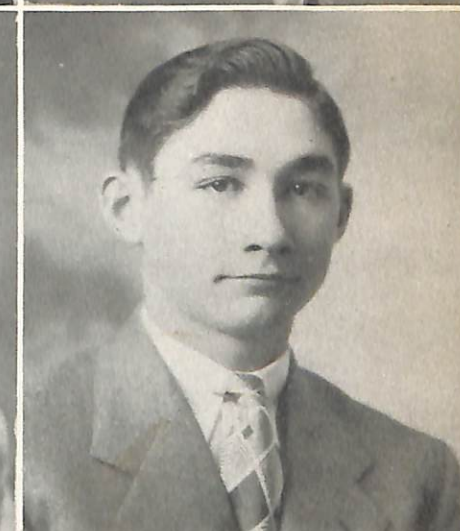
Science  
Class Historian; Beta Club 3, 4; Band 2; Basketball 1, 3; F. F. A. 1, 2; Softball 2, 3; Science Club 4; Pep Squad 1, 2; Class Treas. 2; Panther Staff 3, 4; Herald Staff 3; Class Tournament 2; All Class Tournament, Team 2.

**CHARLES O. WIMAN**  
*Frankest*

Mathematics  
Science Club 4.

**RAMONA YORK**  
*Most Diplomatic*

History  
Beta Club 4; D. A. R. Representative; Commercial Club 4; Debate Alternate 3, 4; Victory Corps 2; N. F. L. 2, 3, 4; Glee Club 2, 3, 4; Glee Club Pres. 3, 4; Class Pres. 2; Miss Sophomore 2; Herald Staff 4; Most Rep. Junior 3; Science Club Pres. 4; N. F. L. Pres. 4; Thespian Society 3, 4; Dramatic Club 1; Language Club 4; School Reporter 4.



# LAST WILL AND TESTAMENT



Pattie Sue Ray  
Valedictorian

Juanita Dye  
Salutatorian

Ramona York  
D. A. R. Representative

Jean Jernigan  
Sweetheart of S. C. H. S.

Bill Allen  
Bachelor of Ugliness

*Who's*

*Who*

We, the Senior Class of '49, some slightly erratic, but the majority sound of mind, on this, the 29th day of April, do declare this writing to be our last will and testament, hereby revoking and making void all other testimonial writings heretofore made by us:

To Miss Marie, our sponsor, we leave unexpressed our deep humility and appreciation for her guidance through the years.

To Mr. Hunter, we leave—hoping he will have many more successful years at S. C. H. S. and never have another Senior class like ours.

To the faculty, we leave all the marvelous new improvements, the greatest of which will be the absence of the present Senior class.

To the Juniors, we leave our dignity—if they can find it.

To the Sophomores, we leave our initials carved on desks and all the chewing gum stuck beneath them.

To the Freshmen, we leave all of our unused capacity for knowledge.

As individuals we wish to leave some of our characteristics to the underclassmen.

I, Jean Barnard, leave hoping that next year they can have a basketball team.

I, Bessie Binion, bequeath my height to Robert Brown.

I, Winnie Bolding, leave my giggles to Patty Sue Stinson.

I, Bill Allen, leave my ability to play basketball to Bobby Wilson.

I, Melvin Briley, leave my ability to make friends to everybody.

I, Jerjal Caruthers, leave my knowledge of current events to Billy Riggs.

I, Loree Cole, leave my typing ability to Joyce Jones.

I, Wilma Creasey, leave my ability to act to all future dramatic students.

I, Kenneth Davenport, leave my method of solving trig to the Payne boys.

I, Sophia Cummings, leave my artistic ability to Frank Empson.

I, Harris Ferguson, leave my ag. projects to Joe Collins.

I, Carol Dorris, leave my popularity to Dot Denning.

We, Christine Taylor and Wanda Ray, leave our ability to get a man to anybody who wants one.

We, Noel Gilliam and Hilman Key, leave our mischievous ways to Hezzy Lane and Joe DeVasher.

We, Juanita Dye and Patty Sue Ray, leave our superior grades to anyone willing to w-o-r-k for them.

I, Donald Hodges, leave Joan Storey with sadness in my heart.

I, Betty Sue Harris, leave geometry with gladness.

I, Wilma Fleming, leave my work in the office to Betty West.

I, Ruth Knowles, leave my ability to sew to Evelyn Prescott.

I, Joe Jernigan, leave my youthfulness to "Pistol".

We, Martha Harper and Imogene Kifkham, leave our quietness to Bobby Wilkinson and Betty Jo Brown, not that they need it!!!

I, W. J. Lamberth, leave Jane Briley to anybody who's lucky enough to get her!

I, Jewell Henson, leave my pleasing ways to Mary Anne Lamberth.

We, Robert Lane and Billy West, leave our ability to play football to Glenn Glover and Bobby Neal.

I, Jean Jernigan, leave my place as cheerleader for three years to Jean Pond.

We, Gerald McMurtry and Charles Wiman, leave positively nothing to anybody.

We, James Story and Hershell Stout, leave hoping the "Chesterfield Club" will be continued for those lacking in will power.

I, Ramona York, leave my melodious voice to Betty Arnette.

I, Mary Dean Wilkes, leave my musical ability to Joyce Woodard.

I, Gloria Lamberth, leave with plans to become Mrs. Donald Dye.

I, Joan Link, leave my debating ability to Bert Angela.

We, Russell Ray and Edwin Tarrents, would just like to leave please!

I, Betty Legge, leave my helpfulness to Nancy Fowler.

I, Billy Wilson, leave my intelligence to Nadine Claiborne.

I, James A. Williams leave my sincere ways to popular Billy Williams.

We, Wanda Hardin and Betty Link, leave to find our fun somewhere else.

We, the Senior Class, having bequeathed all our properties, thus leave to continue our lives in chosen fields here and there and everywhere.

Mai Rose Bowers, Testator



# SENIOR ALPHABET



Athletic  
Betty Sue Harris, Billy West



Bachelor of Ugliness  
Bill Allen



Cutest  
Wanda Hardin



Diplomatic  
Ramona York



Efficient  
Juanita Dye



Friendliest  
Betty Legge



Graceful  
Sophia Cummings



Handsome  
Melvin Briley



Intellectual  
Patty Sue Ray



Jolly  
Winnie Bolding



Kind  
Christine Taylor



Likable  
Jerial Caruthers



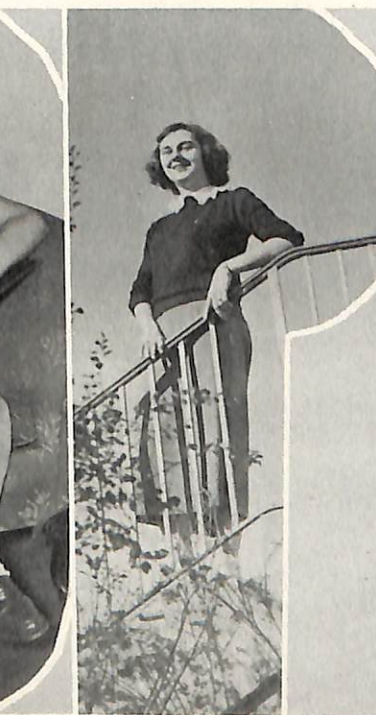
Musical  
Mary Dean Wilkes



Neatest  
Kenneth Davenport



Original  
Gloria Lamberth



Popular  
Carol Dorris



Quietest  
Martha Harper



# SENIOR ALPHABET

April 30, 1959



Romantic  
Wilma Fleming

Sweetheart of  
S. C. H. S.  
Jean Jernigan

Talented  
Hershel Stout

Unusual  
Bessie Binion

Versatile  
Joan Link



Wittiest  
Noel Gilliam

Xecutive  
Wilma Creasey

Youthful  
Joe Jernigan

Zealous  
Billy Wilson

Dear Mai Rose,

I have just heard of your great achievements as a scientist. My sincere congratulations! I recall that you always made excellent grades in the science class at S. C. H. S.

You will be interested, I know, to hear of my visit to our home state, where I renewed many acquaintances dear to both of us. Since I saw you last, I have made a tour of the South.

I was not surprised to learn that Robert Lane was the governor of Tennessee. If you remember, he always had an interest in politics. He invited me to visit him in his new mansion in Portland, designed by architect Kenneth Davenport and furnished by Bill Allen's Antique Shop. The famous Carol Dorris was his interior decorator. Paintings by Sophia Cummings hang in every room. After we toured the house, he sent for his car to take me for a drive. Who should bring it around but Jerial Caruthers! He owns a very successful garage in town. We drove out in the country and saw all of Harris Ferguson's beautiful farms. When we got back, it was so late that my host invited me to have dinner with him at his mansion. Of course I accepted. The food was served by Ruth Knowles who explained that she and Loree Cole took turns supervising the kitchen and serving the governor's meals. After dinner we went to the theatre to see the play, "Eight Girls," written and directed by Wilma Creasey, the great playwright.

After the play, Robert dropped me off at my hotel. In the lobby, I walked over to look at the magazines. The first thing I saw was the glamorous cover girl, Jean Barnard. While the clerk, Jewel Henson, and I were reminiscing for a few minutes, I saw a familiar pair of broad shoulders. It was no other than Billy West who had stopped over for the night before going to New York to sign a contract to play pro-football the coming season. I wished him luck and went to the desk to get my key. The night clerk proved to be W. J. Lamberth, who is working his way up to manager of the hotel. Suddenly I heard a clanging of an ambulance bell. Some one told me that there had been an accident in the hotel. Dr. Bill Wilson, accompanied by his nurse, Gloria Lamberth, rushed in to take care of the patient that bell-boy Edwin Tarrents showed them.

I finally got off to bed and awoke, after a good rest, with a relaxed mind. I had a delicious breakfast prepared for me by dietitian, Marie Shirrell. I walked for hours, just seeing the changes that had been made in the old town. Instead of the Rose Bowl Cafe there stood a modern cafeteria, owned and operated by Mr. and Mrs. Fred Rayne, the former Wilma Fleming. In the town square stood a monument in honor of Melvin Briley, the present Speaker of the House. On a visit to the stores, whom should I see but Evelyn Douglas Taylor, who loves to go shopping for her two small children. Since it was rather warm for April, I stopped in at Joe Jernigan's drugstore to get a coke. Joe's dreams have been realized, for he now owns his own pharmacy. Noel Gilliam is coming in as his partner next week. Too bad I won't be around to see him! Hearing a familiar giggle, I turned just in time to see Winnie Bolding walk down the street.

She had just arrived in town after winning a contest for the silliest giggle in the world. I walked on till I came to our old Alma Mater. Patty Sue Ray is the first woman ever to be principal of S. C. S. Betty Legge is her secretary and, of course, Juanita Dye is her assistant, as well as commercial teacher. After classes like that of '49, Mr. and Mrs. Hunter had to retire. Miss Marie *still* holds her position as English teacher with Joe DeVasher and Hezzy Lane *still* her star pupils! The new gym was completed and the National Basketball Tournament was held there this season. They told me that Betty Sue Harris, who is playing with the Goldblumes now, was on the All-Star team. I passed a beautiful house where two boys were playing basketball in the yard. They will probably be great players some day, following in the footsteps of their mother, Wanda Snow Ray.

Robert came by after dinner to take me to a concert in Key Hall, a beautiful auditorium given to the town by Hilman Key after he answered the jackpot question, "Who wrote the Star Spangled Banner?" Our tickets were sold to us by Imogene Kirkham, and Charles Wiman showed us to our seats. The great soprano, Ramona York and the eminent pianist, Mary Dean Wilkes, gave the outstanding concert of the season.

Driving back to the hotel, we listened over WHIN to Hersell Stout's Talent Scouts. It seems he got his start that way and now wants to help others. Russell Ray introduces the contestants. His superior voice has carried him far.

The next day we went to the Sportswear Shop owned and operated by Gerald McMurtry, who specializes in purple and white football sweaters.

While walking down the avenue, we saw a poster that said the shortest girl in the world was coming to town. Who's she? Why that's Bessie Binion. Hershell stands beside her for contrast. James Story is their energetic business manager.

The mayor of Portland, Donald Hodges, asked us to drop by his office. His secretary Martha Harper, gave us a gracious welcome. While we sat there, James A. Williams came in to see if the Mayor could help raise the prices on farm produce, as his big farm was losing money at the present rates. When we left his office, we saw Jean Jernigan who had just been chosen "Miss America of '59". She was in a rush to prepare for her wedding rehearsal.

The morning newspaper contained an item of interest to us. Betty Link has been appointed interpreter for the Spanish-speaking countries. She has recently become a whiz at Spanish. Wanda Hardin is going to accompany her on the trip to South America and be her advisor and secretary.

All too quickly the time came for me to leave. Not the Governor, but Robert, escorted me to the train. I shall always treasure those happy hours together.

Tomorrow I begin my career in radio—long my ambition. I wish you continued success in your beloved field.

Sincerely Your Friend,  
Joan

## CLASS HISTORY

The middle of August, 1945, found a very green group of freshmen at S.C.H.S. After initiation by the belt-line or otherwise we became full-pledged students. During our four years in high school some have left, and others have come into the class from other communities.

As each school year was successfully finished, we considered it a feather in our caps. All of us now have four and some aspire to have more. Our class has had the pleasure of furnishing many of the athletes for school activities. Also from our class have come several pupils of high scholastic standing.

Time tells us it has been four years, but our hearts seem to say yesterday. From this milestone, we shall look back on graduation from S.C.H.S., as one of the highlights of our lives.

Billy W. Wilson, Historian

## CALL OF THE FUTURE

Happily we listen to the call of the future  
Eager to learn this new and different game.  
Each of us knows what we want of life  
And that success does not mean wealth and fame.

Our lives have yet been lived in carefree lilt  
Too full of lightness for the things that finer seem.  
The pattern by which we live must be improved  
If we're to reach the goal of which we dream.

The future echoes now a strange refrain  
Before us lies an open road, well trod  
Now there is a task to be completed  
And it shall be done with help from God.

It is said that life is fickle, treat her well  
Learn her vagrant melody, withstand her test.  
The keys she gives help uncloset many doors  
Choose now the one that opens to the best.

Wilma Creasey



Bobby Wilkinson  
President

Mary Jones  
Secretary

Robert Garrett  
Vice-President

Billy Williams  
Treasurer

*Class Officers*  
**Juniors**

Rebecca Anglea  
The impromptu reply is precisely the touchstone  
of wit

Margaret Armstrong  
If you would marry suitably, marry your equal.

Betty Arnette  
Modesty, when she is gone, is gone forever.

Bonnie Jo Ashlock  
Kindness is the golden chain by which society  
is bound together.

Earl Bennett  
The best throw of the dice is to throw them  
away.

Frances Brewer  
Marriage is the keeley cure for love's intoxica-  
tion.

Truman Brewer  
The wandering mind is but a base possession.

Blonnie Hugh Briley  
Patience is the key of content.

Betty Jo Brown  
The busy have no time for tears.



Margaret Gregory  
Impatience dries the blood sooner than age or  
sorrow.

Claude Hardin  
Nature and wisdom always say the same.

Marie Harper  
Where judgment has wit to express it, there is  
the best orator.

William Harper  
Opportunity is rare and a wise man will never  
let it go.

Leslie Harris  
Truth is liable to be left-handed in history.

Willard Hobby  
Men may live fools, but fools they cannot die.

Wilma Hodges  
It is better not to be than to be unhappy.

Bessie Hughes  
A kind heart is a fountain of gladness.

Christine Hunnicutt  
The soul of a woman lives in love.

## JUNIORS



Conway Brown  
Ready money is Aladdin's lamp.

Dot Brown  
People generally quarrel because they cannot  
argue.

Mr. Bradley  
Co-sponsor

Marjorie Brown  
Trust not him who has once broken faith.

Betty Civils  
Sorrow like rain makes roses and mud.

Catherine Clubbs  
Joy is the fruit that Americans eat green.

Betty Coker  
Evil news rides post, while good news bates.

Peggy Culbreath  
Here today, gone tomorrow.

Joe DeVasher  
There are more men ennobled by study than  
by nature.

Robert Garrett Vice-President  
A little nonsense now and then is relished by  
the wisest men.

Leroy Graves  
We forgive too little, forget too much.

Clarence Gregory  
Love is love's reward.

## JUNIORS

Mrs. Wilbern Dorris  
co-sponsor

Betty Hunter  
Whatever is popular deserves attention.

Earl D. Hunter  
Amusement to an observing mind is study.

Joyce Jones  
Style may be defined: "Proper words, in prop-  
er places."

Mary Jones Secretary  
Music is the medicine of a breaking heart.

Maxine Keye  
Dignity and love do not blend well together.

Earl Knowles  
Temper, is ungoverned, governs the whole  
man.

Mary Anne Lamberth  
They think too little who talk too much.

Jean Link  
All grand thoughts come from the heart.

Jimmy Martin  
Where boasting ends, there dignity begins.

Mildred McDougal  
Love is loveliest when embalmed in tears.

Dorothy Mee  
It seems to me 'tis only noble to be good.



Virginia Moore  
 The golden age is before us, not behind us.  
 Jackie Myres  
 Judges and senators have been bought with gold.  
 Stanley Nesbitt  
 You can't keep a good man down.

Margaret Parks  
 Never meet trouble half-way.  
 Harold Payne  
 Ill deeds are doubled with an evil word.  
 Jean Pond  
 It is in music that most youthful hearts learn to love.

Evelyn Prescott  
 Flatterers are the worst kind of enemies.  
 Josephine Scott  
 Paradise is open to all kind hearts.  
 Elsie Shirrel  
 Nature is the best posture maker.



## JUNIORS



Jerry Stevenson  
 Let us respect gray hairs, especially our own.  
 Joe Stewart  
 Conceit is God's gift to little men.

Charles Stone  
 They talk most who have the least to say.  
 Woodrow Story  
 Nothing succeeds so much as success.  
 Ernestine Trammell  
 Our opportunities to do good are our talents.

Rebecca Trammell  
 The surest way not to fail is to determine to succeed.  
 Betty West  
 Lovely flowers are the smiles of God's goodness.  
 Talmadge Whitson  
 One hour of sleep before midnight is worth two after.

Bobby Wilkinson    President  
 A name is the kind of face whereby one is known.  
 Billy Williams    Treasurer  
 A face that cannot smile is never good.  
 Bobby Wilson  
 It is wonderful how near conceit is to insanity.

# Sophomores



Joe Collins  
 Secretary

Howard Lane  
 President

Robert Brown  
 Vice-President

John Beaty  
 Treasurer

## Class Officers

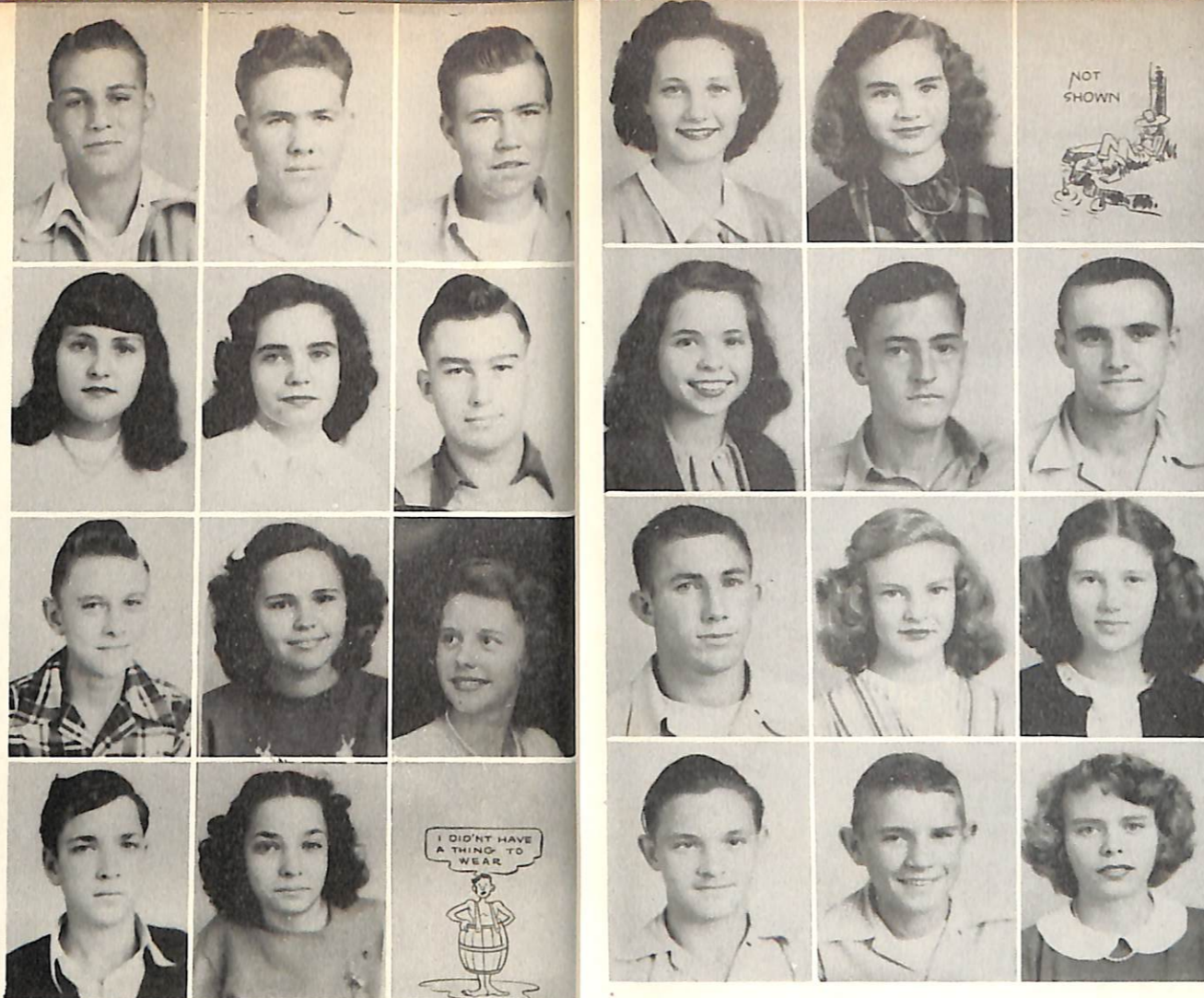
SOPHOMORES

Thomas Atchison  
John Beaty  
Harold Bell

Frances Bowers  
Jane Briley  
Joe Brown

Robert Brown  
Helen Bush  
Mary Callis

Charlie Claiborne  
Nadine Claiborne  
Joe Collins



Larry Collins  
Rebecca Cummings  
Dorothy Denning

Mary Ellen Dillard  
Sue Dobbs  
Jane Dye

David Farmer  
Peggy Franklin  
Janette Freeland

James R. Garrison  
Bettie George  
Paul Heady



SOPHOMORES

Christine Hunter  
Eurie J. Jenkins  
Larry Johnson

Charlie Jones  
Jim Jones  
Howard Lane

Donnell Leath  
Era Link  
Eleanor Martin

Johnnie Merritt  
James Payne  
Evelyn Pearson

Mary Jo Perdue  
Billie Petty  
Florine Poole

Jeanne Ragan  
Margaret Schablik  
Pattie Sue Stinson

Donald Ventress  
Wanda Wallace  
Ernie Watkins

Charles Wilson  
Joyce Woodard







# Freshmen



Dan West  
Secretary

Patty Brown  
Treasurer

Joe Jones  
President

Frank Empson  
Vice-President

## Class Officers

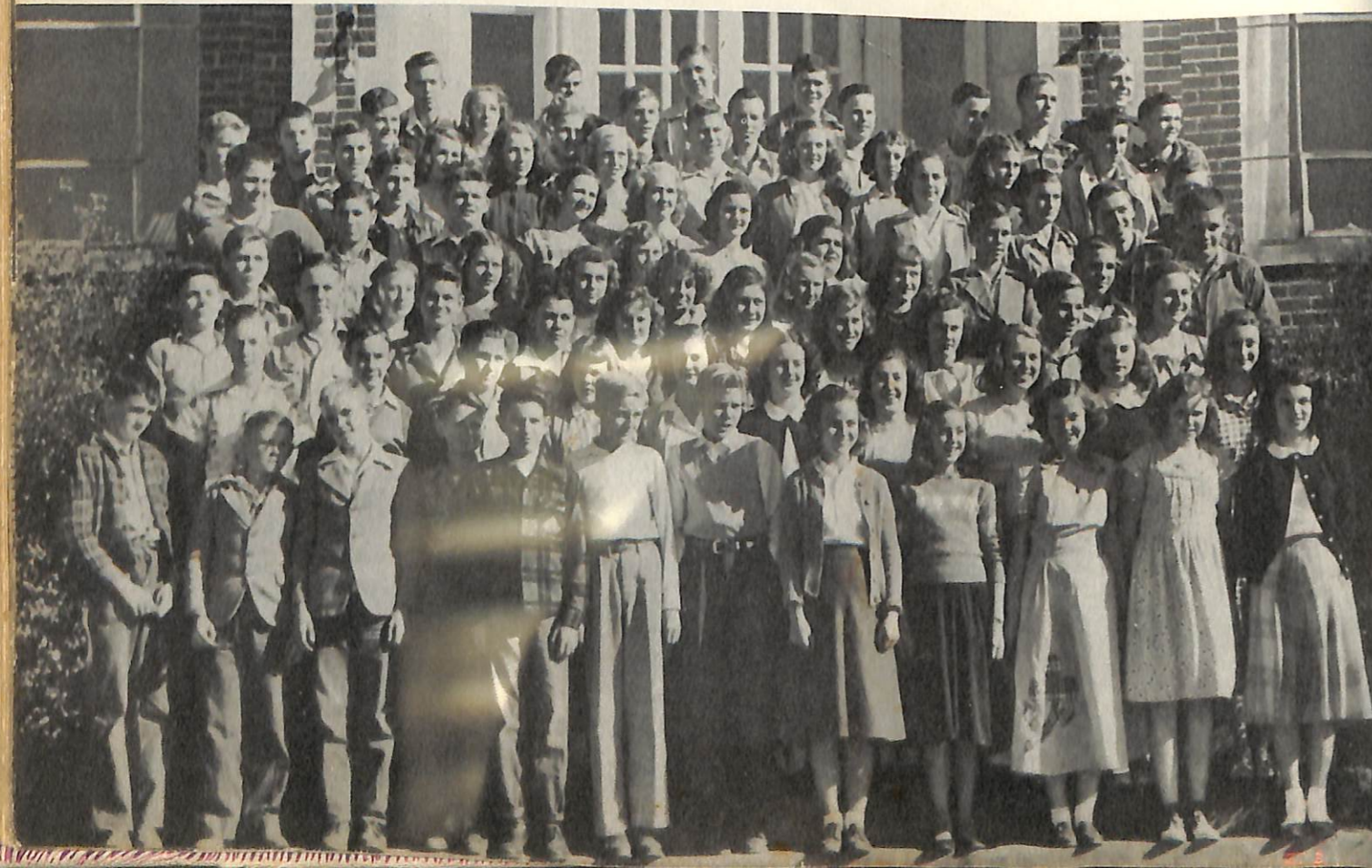
# FRESHMAN CLASS

Joe Jones.....President  
 Frank Empson.....Vice-President  
 Dan West.....Secretary  
 Patty Brown.....Treasurer  
 Anne Brown.....Reporter

Anderson  
 Anglea  
 Bennett  
 Briley, B.  
 Briley, L.  
 Brown, A.  
 Brown, M.  
 Brown, P.  
 Callis  
 Calvert  
 Clark  
 Crafton  
 Craige  
 Davenport  
 Dickens  
 Dobbs, J.  
 Dobbs, L.  
 Douglas  
 Dunning  
 Dye, B.  
 Dye, J.  
 Eidson  
 Empson  
 Flatt  
 Fleming  
 Fowler  
 Freeman  
 Goforth

Graves  
 Gray  
 Gregory, N.  
 Gregory, W.  
 Harper, D.  
 Harper, H.  
 Harper, K.  
 Hart  
 Heady  
 Hester  
 Hunter, J.  
 Hunter, J.  
 Hurt  
 Jones, J.  
 Key  
 Kirkham  
 Knowles  
 Lane  
 Lanier  
 Link, C.  
 Link, G.  
 Long  
 Martin, B.  
 Martin, S.  
 Mayes  
 McCormick  
 McGlothlin  
 Jones, D.

Moore  
 Patton  
 Pearson  
 Perdue  
 Poole  
 Porter  
 Ragan  
 Ray  
 Riggs  
 Riggsbee  
 Roark  
 Scott  
 Simpson  
 Storey  
 Street  
 Suttle  
 Tarrents  
 Utley  
 Vanatta  
 Wakefield  
 West, D.  
 West, L.  
 Wiseman  
 Wix  
 Woodall, C.  
 Woodall, G.  
 Woodard  
 Young



# OUTSTANDING



Larry Johnson

Bobby Wilkinson

Frank Empson

Nancy Fowler

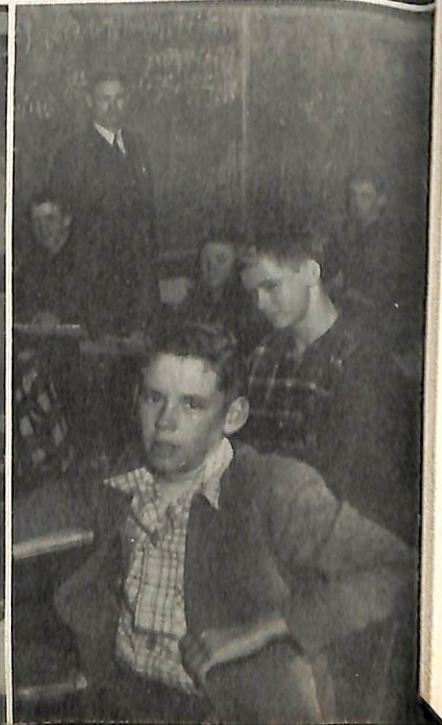
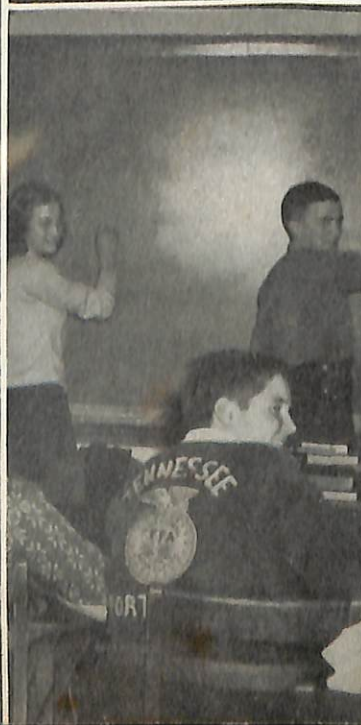
Dot Denning

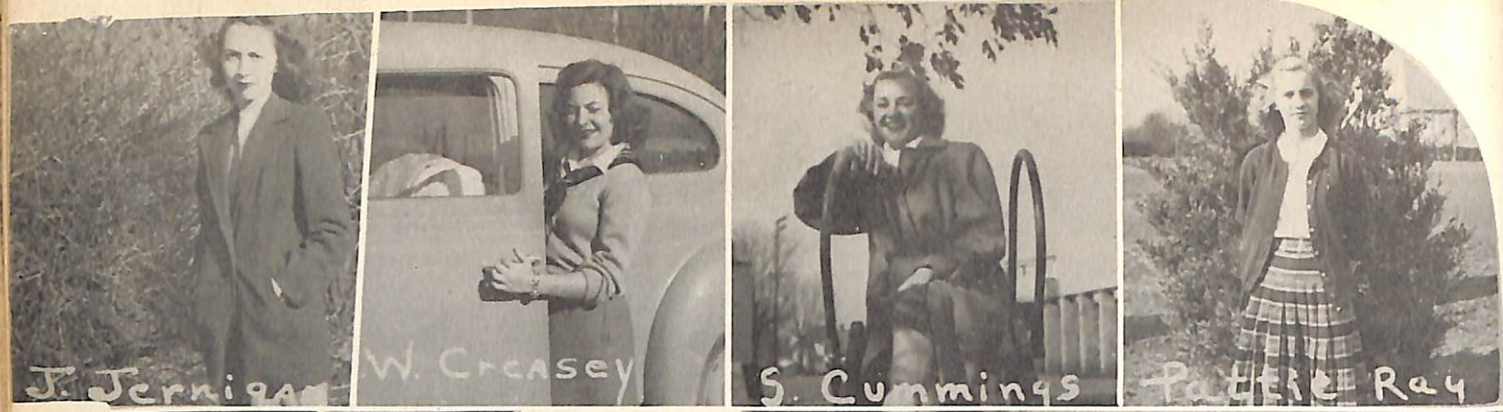
Jean Pond

SCHS

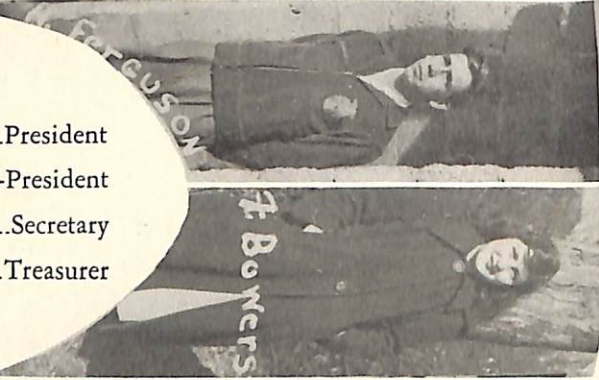
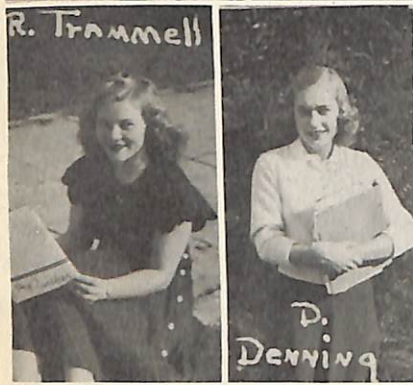


# Organizations

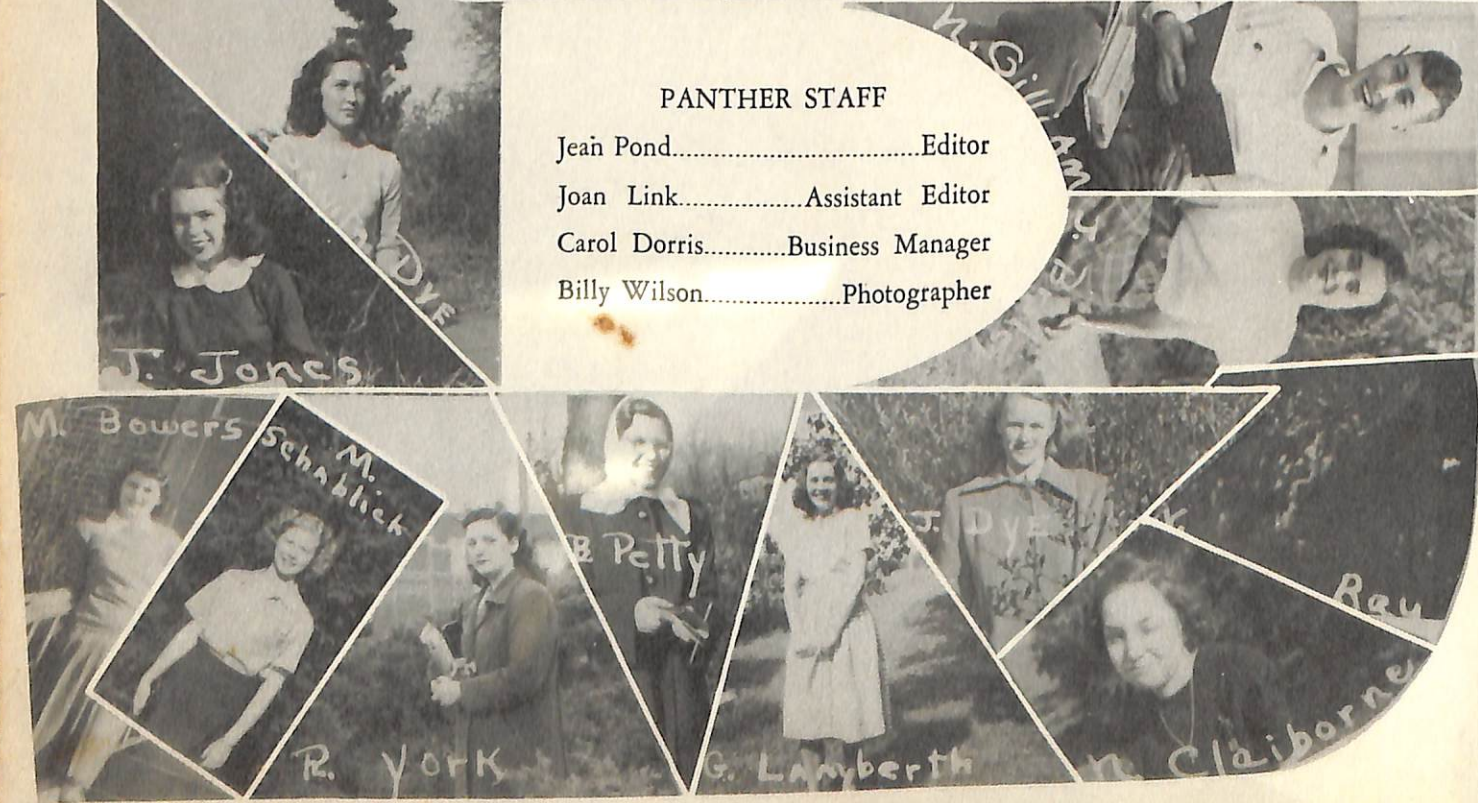




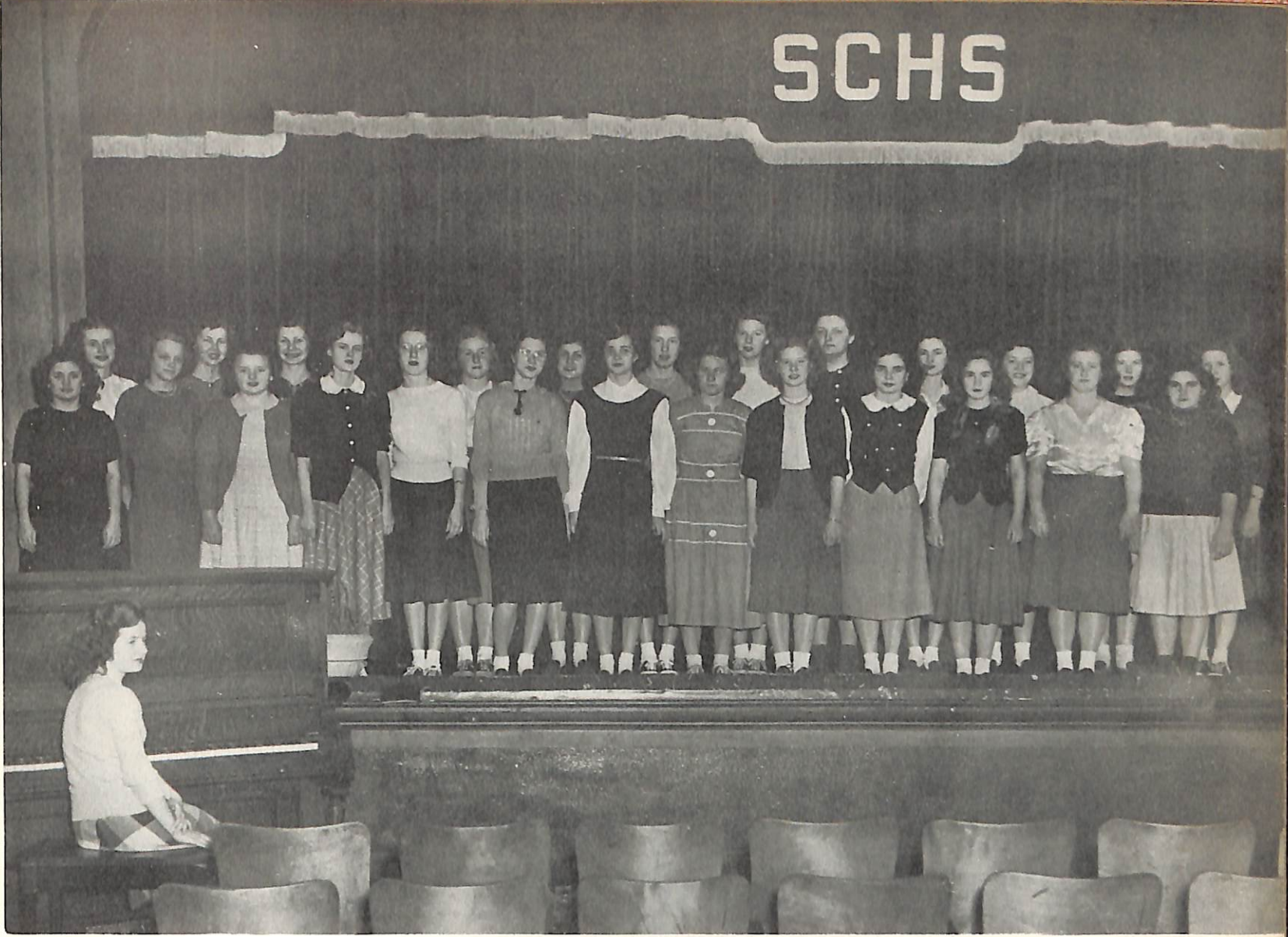
**BETA OFFICERS**  
 Jean Jernigan.....President  
 Wilma Creasey.....Vice-President  
 Sophia Cummings.....Secretary  
 Patty Sue Ray.....Treasurer



**PANTHER STAFF**  
 Jean Pond.....Editor  
 Joan Link.....Assistant Editor  
 Carol Dorris.....Business Manager  
 Billy Wilson.....Photographer



SCHS



Frances Bowers  
 Jane Briley  
 Mary Callis  
 Betty Civils  
 Love Joy Clarke  
 Betty Coker  
 Bettie George  
 Bessie Hughes  
 Betty Hunter  
 Eurie J. Jenkins  
 Betty Legge  
 Eleanor Martin

**GLEE CLUB**

Ramona York.....President  
 Betty Hunter.....Vice-President  
 Betty Legge.....Secretary  
 Jane Briley .....Treasurer  
 Margaret Schablik.....Reporter  
 Bettye Dye .....Accompanist  
 Mrs. Russel Hobdy .....Sponsor

Dorothy Mee  
 Virginia Moore  
 Margaret Parks  
 Mary J. Patton  
 Billie Frances Petty  
 Jean Ragan  
 Margaret Schablik  
 Pattie Sue Stinson  
 Ernestine Trammel  
 Mary D. Wilkes  
 Joyce Woodard  
 Ramona York



N. F. L.

Ramona York.....President  
 Joyce Jones.....Vice-President  
 Maxine Keye.....Secretary  
 Joe Jernigan.....Treasurer

Rebecca Anglea  
 Betty Arnette  
 John Beaty  
 Mai Rose Bowers  
 Melvin Briley  
 Anne Brown  
 Betty Jo Brown  
 Dot Brown  
 Loree Cole  
 Joe Collins  
 Wilma Creasey  
 Sophia Cummings  
 Dot Denning

Carol Dorris  
 Jane Dye  
 Juanita Dye  
 Wilma Fleming  
 Nancy Fowler  
 Leslie Harris  
 Christine Hunnicutt  
 Betty Hunter  
 Jordan Hunter  
 Jean Jernigan  
 Joe Jernigan  
 Joyce Jones  
 Larry Johnson

Maxine Keye  
 Betty Link  
 Joan Link  
 Mildred McDougal  
 Jean Pond  
 Patty Sue Ray  
 Russell Ray  
 Margaret Schablik  
 Patty Sue Stinson  
 Hershell Stout  
 Rebecca Trammel  
 Maurice Utley  
 Mary Dean Wilkes  
 Ramona York



# LANGUAGE CLUB

Joan Link .....President  
 Noel Gilliam .....Vice-President  
 Jane Dye .....Secretary  
 Mai Rose Bowers .....Treasurer  
 Mrs. Moore and Mrs. Jernigan .....Sponsors

Bill Allen  
 Betty Arnette  
 Ann Brown  
 Dot Brown  
 Nadine Claiborne  
 Wilma Creasey  
 Dot Denning

Carol Dorris  
 Nancy Fowler  
 Jean Jernigan  
 Hilman Key  
 Robert Lane  
 Betty Link  
 Billie F. Petty

Margaret Schablik  
 Alberta Street  
 Maurice Utley  
 Mary Dean Wilkes  
 Billy Wilson  
 Joyce Woodard  
 Ramona York

# SCIENCE CLUB

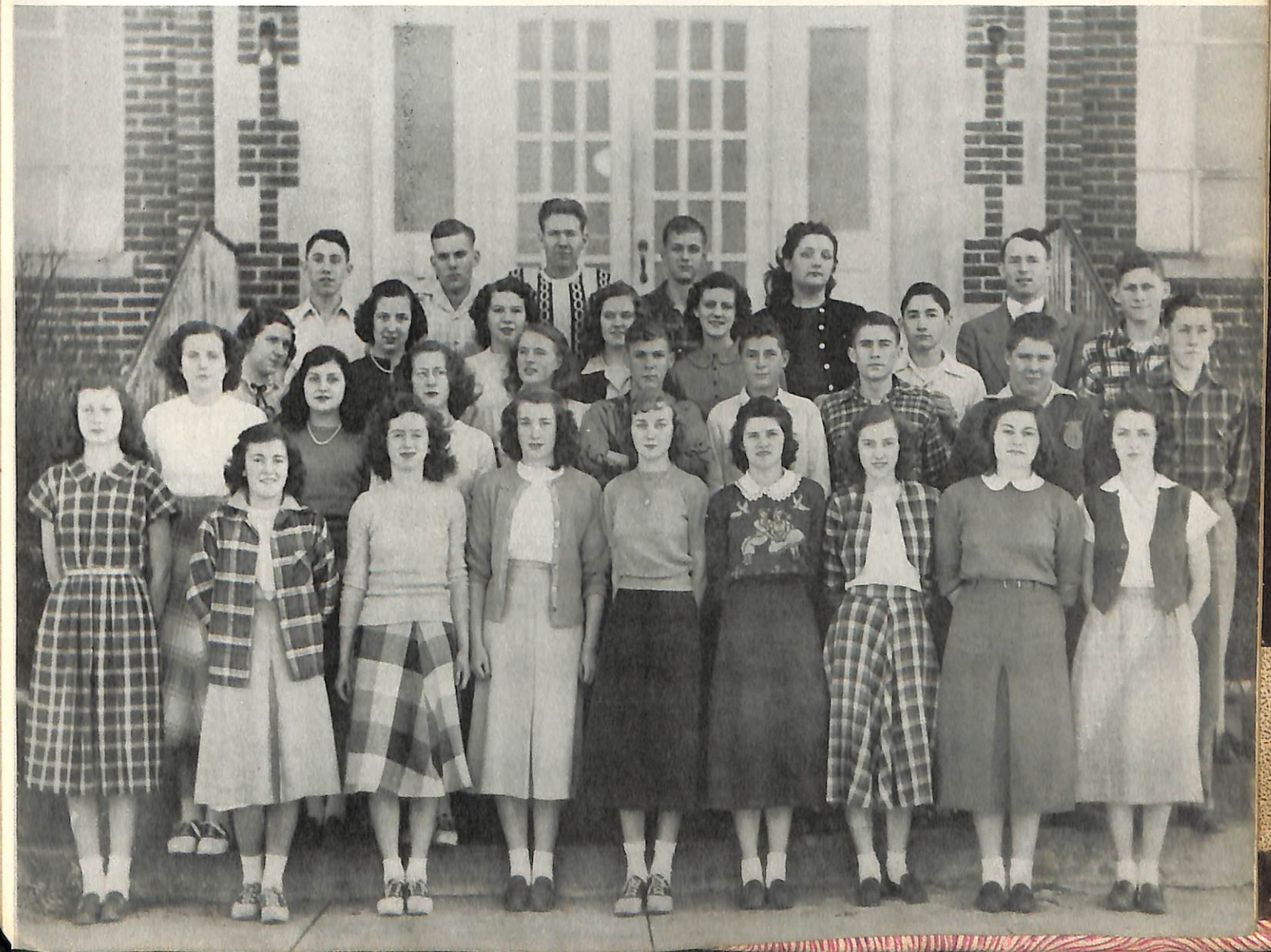
Ramona York .....President  
 Jane Dye .....Vice-President  
 Patty Brown .....Secretary  
 Joan Hart .....Treasurer  
 Lawrence Bradley .....Sponsor

John Beaty  
 Mai Rose Bowers  
 Frances Bowers  
 Truman Brewer  
 Charlie Claiborne  
 Love Joy Clark  
 Wilma Creasey  
 Sophia Cummings  
 Lucille Dobbs

Betty Dye  
 Noel Gilliam  
 David Harper  
 Jean Jernigan  
 Joe Jernigan  
 David Jones  
 Hilman Key  
 Carol Knowles  
 Noel Lane

Joan Link  
 Lanny Moore  
 Billie Frances Petty  
 Pattie Sue Stinson  
 Joan Story  
 Wanda Wallace  
 Charles Wiman  
 Joyce Woodard

SCHS





Wilma Fleming.....President  
 Evelyn Prescott.....Vice-President  
 Betty Hunter.....Secretary  
 Mary Anne Lamberth.....Treasurer  
 Mrs. Wilbern Dorris.....Sponsor

Ashlock	Cummings	G. Link	Ragan
Binion	Davenport	J. Link	Riggsbee
B. Briley	Dillard	Long	Shablik
J. Briley	L. Dobbs	E. Martin	J. Scott
A. Brown	S. Dobbs	S. Martin	R. Scott
B. Brown	C. Douglas	Mayer	Shanklin
M. A. Brown	N. Douglas	McDougal	E. Shirrel
M. Brown	B. Dye	McMurtry	M. Shirrel
P. Brown	W. N. Fleming	Mee	Stinson
Bush	W. Fleming	Moore	Storey
J. Callis	Fowler	Parks	Street
M. Callis	Franklin	Patten	Utley
Calvert	Freeland	Pearson	Vanatta
Civils	Freeman	Perdue	Wakefield
Claiborne	George	Pittman	Watkins
Clark	Gray	Poole	West
Culbreath	Hardin	Prescott	Woodall

F. H. A.



FUTURE FARMERS OF AMERICA



Bert Anglea	Hugh Allen Craige	David Jones	Russell Ray
Wayne Bennett	Thomas Eidson	Paul Key	William Roark
Truman Brewer	David Farmer	Earl Knowles	Joe Stewart
Blonnie Briley	Harris Ferguson	W. J. Lamberth	Charles Stone
Lonnie Briley	Clarence Gregory	Charles Link	Hershell Stout
Conway Brown	Norbert Gregory	John McCormick	Jackie Suttle
Charles Claiborne	Wayne Gregory	William McGlothlin	Bobby Tarrents
Larry Collins	David Harper	Bobby Martin	Edwin Tarrents
Paul Crafton	Harold Harper	Jackie Myers	James Williams
James Dickens	Kenneth Harper	Harold Payne	Charles Wilson
Joe Dobbs	William Harper	Bobby Perdue	Less Wiseman
Glenn Dunning	Paul Heady	Donald Poole	Henry Wix
Joe Dye	Donald Hodges	Billy Ray	John Woodard
			Harold Young

Mr. Bert Anglea  
F. H. A. King

# BARNWARMING

Miss Jean Mayes  
F. F. A. Queen



## THE COMMERCIAL CLUB

Betty Legge .....President  
Joyce Jones .....Vice-President  
Wanda Ray .....Secretary-Treasurer  
Mary Anne Lamberth .....Reporter  
Mrs. Hunter .....Sponsor

Rebecca Anglea  
Betty Arnette  
Bonnie Jo Ashlock  
Jean Barnard  
Melvin Briley  
Conway Brown  
Dot Brown  
Marjorie Brown  
Betty Coker

Loree Cole  
Peggy Culbreath  
Kenneth Cavenport  
Dot Denning  
Juanita Dye  
Wilma Fleming  
Jewel Henson  
Wilma Hodges  
Mary Frances Jones

Maxine Keye  
Imogene Kirkham  
Betty Link  
Gloria Lamberth  
Virginia Moore  
Jean Pond  
Evelyn Prescott  
Pattie Sue Ray  
Josephine Scott

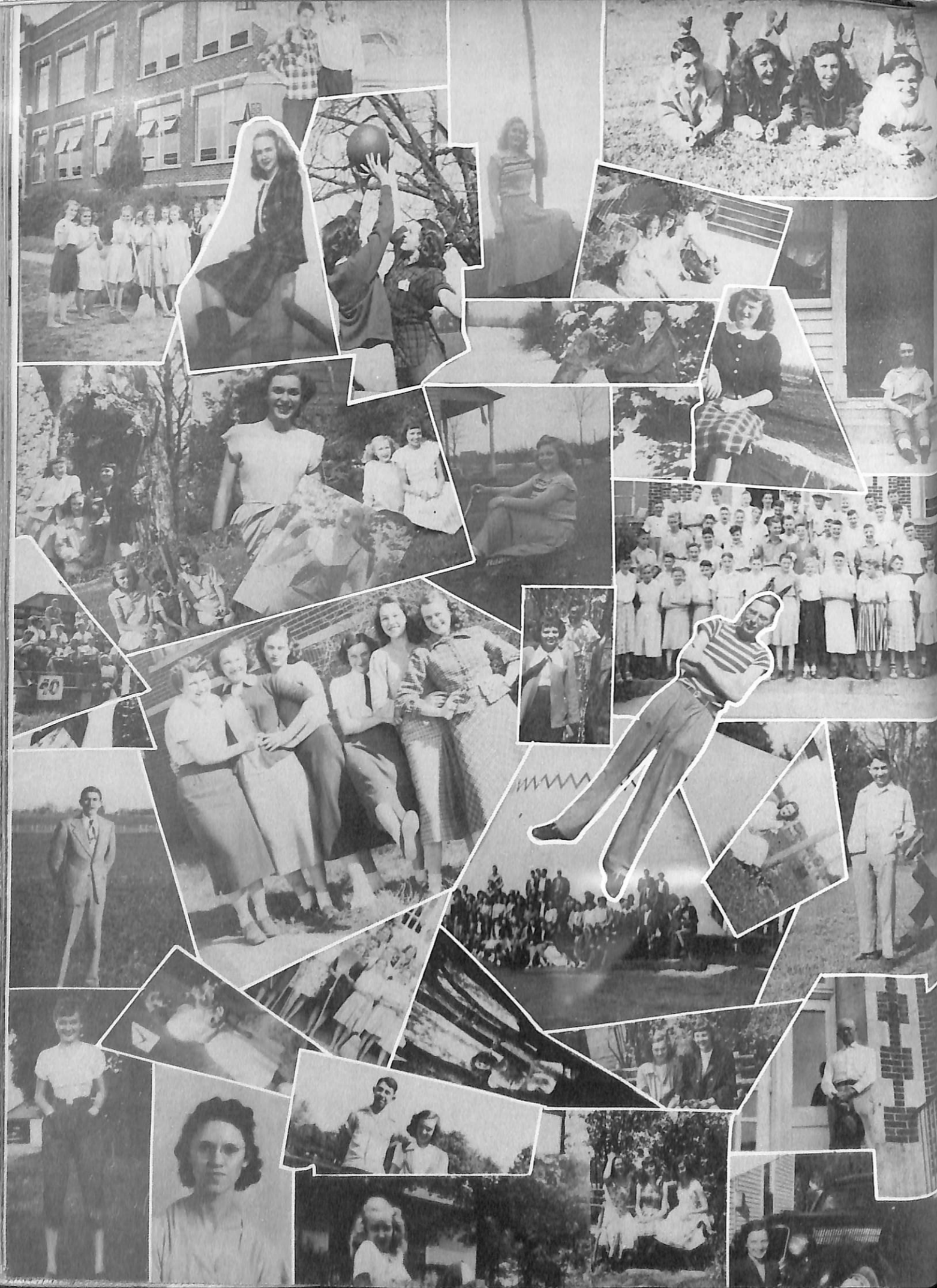
Elsie Shirrell  
Marie Shirrell  
Pattie S. Stinson  
James Story  
Edwin Tarrents  
Ernestine Trammell  
Rebecca Trammell  
Betty West  
Mary Dean Wilkes  
Ramona York

### Purple Herald Staff

Juanita Dye  
Pattie Sue Ray .....Co-Editors  
Betty Legge .....Business Manager  
Various Members of  
the Commercial Club ..... Typists and Reporters







# SPORTS



Joan Storey

Betty Jo Brown

Sophia Cummings

Carol Dorris

Dot Denning

Jean Jernigan

Jean Pond

*Cheerleaders*



Howard Lane  
Full Back



Donnell Leath  
Center



James Williams  
Right Tackle



William Harper  
Left Guard



Joe DeVasher  
Right End



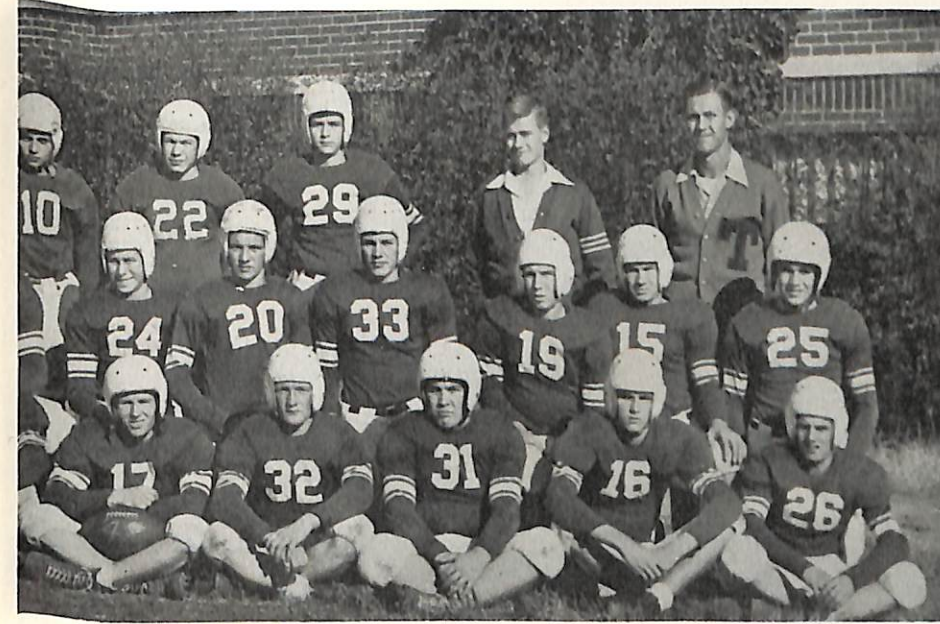
Billy West, Co-Capt.  
Quarter Back



Bobby Wilson  
Manager



# Purple



# Panthers



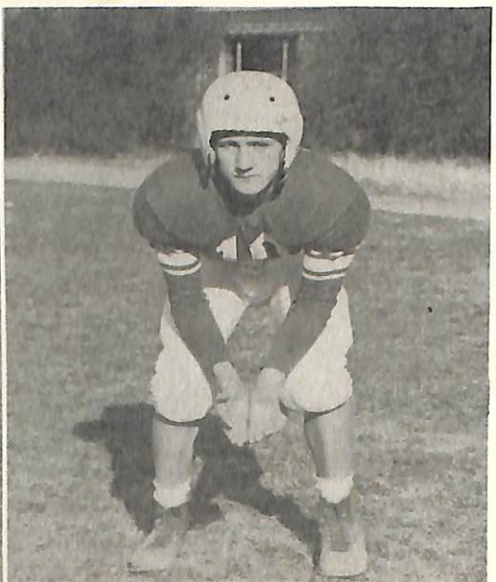
Earl Knowles  
Manager



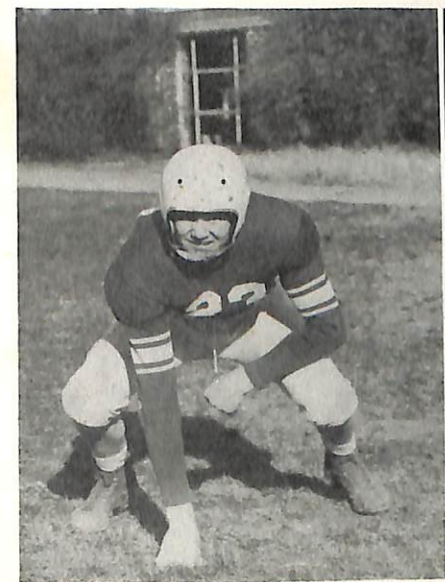
Earl Hunter  
Right Tackle



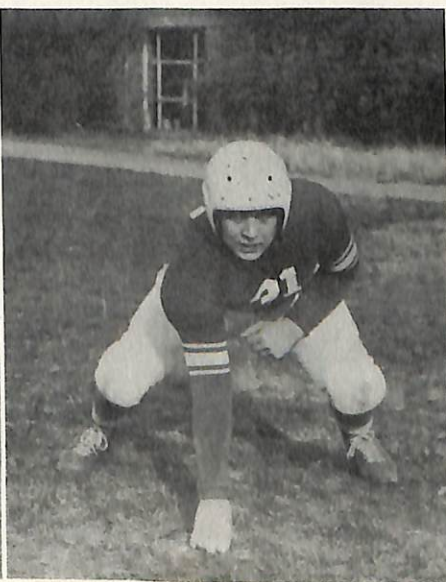
Robert Lane  
Left End



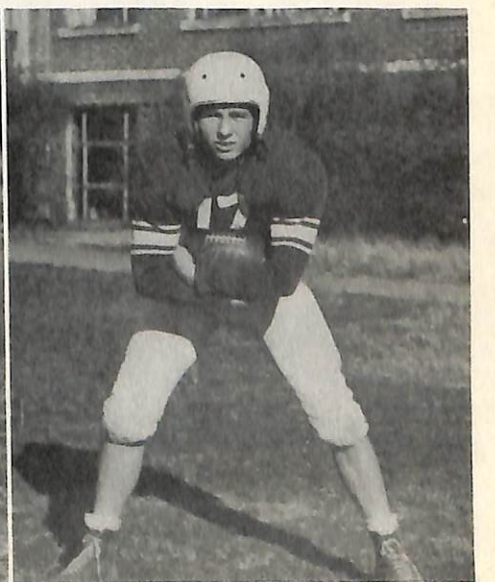
Larry Johnson  
Wing Back



Joe Collins  
Right Guard



Gerald McMurtry  
Left Tackle



Bobby Elmore, Capt.  
Wing Back

'48  
PANTHER QUEEN  
Miss Carol Darris







Our Supporters

SIMPSON COUNTY LOOSE LEAF FLOOR

No. I and II

The house that satisfies!

Franklin, Ky.

D. W. Billingslea

Lewis Rutherford

HUGHES MARKET  
Highway 31 W  
Franklin, Ky.  
open every night

*Compliments of*  
ALLEN GARMENT CO.  
Franklin, Ky.  
Nashville, Tenn.

MASSEY MOTOR CO.  
Everything for the Auto  
Franklin, Ky.

B. AND L. MOTOR CO.  
Chrysler & Plymouth Dealers  
Heavy Wrecker Service  
Phone 440 Franklin, Ky.

*Compliments of*  
W. B. BUTT & CO.  
Dealers in Tobacco  
Franklin, Ky.

*Compliments of*  
VAUGHN PONTIAC CO.  
Sales & Service  
Franklin, Ky.

MASSEY FURNITURE CO.  
Everything for the Home  
in Furniture and Appliances  
Franklin, Ky.

*Compliments of*  
LANIER CHEVROLET CO.  
Franklin, Ky. Phone 22

ELDRED'S HARDWARE CO.  
Franklin, Ky. Phone 37

*Compliments of*  
LERMAN BROS., INC.  
Franklin, Ky. Phone 151

JESSE T. MALLORY  
Jeweler  
Franklin, Ky.

PEPSI-COLA BOTTLING CO.  
The Drink that Refreshes

SIMPSON CO.  
SEED & FARMERS COOP.  
Seed and Farm Supplies  
Franklin, Ky.

*Compliments of*  
FARMERS ELEVATOR CO.  
Franklin, Ky.

*COMPLIMENTS OF*  
PORTLAND PLANING MILL  
Portland, Tennessee

*Compliments of*  
THE FARMERS BANK  
Portland, Tenn.  
Member of F. D. I. C.

*Compliments of*  
BRITTON JOHNSON  
Insurance for the Family  
Gallatin, Tennessee

*Compliments of*  
BOOKER'S STORE  
Portland, Tennessee

WESTERN AUTO ASSOCIATE  
STORE  
Everything for the Automobile  
Main Street  
Portland, Tennessee  
J. H. Caruthers, Prop.  
C. Hunter, Mgr.

J. E. KERLEY & SONS  
Hardware Furniture Rugs  
Plumbing & Heating Supplies  
Portland, Tennessee  
Refrigerators Radios Stoves  
Ranges

*Compliments of*  
CULBREATH & RIGGS  
Groceries & Feeds  
Phone 49 Portland, Tenn.

*Compliments of*  
JONES' MARKET  
Portland, Tennessee

NASHVILLE PURE MILK CO.  
Tru-I-Pure Products  
Nashville, Tennessee

Gordon's Fresh Potato Chips  
Trucks Serving the Best  
E. L. Mims  
Salted Peanuts — Candies — Nuts  
Cakes  
GORDON'S FOODS, INC.  
Nashville, Tenn.

Drink COCA-COLA  
in Bottles

*Compliments of*  
ROBERT ORR & COMPANY  
Wholesale Groceries  
Nashville 3, Tennessee

L. G. BALFOUR COMPANY

Attleboro Massachusetts  
 Class Rings and Pins  
 Commencement Invitations  
 Diplomas — Personal Cards  
 Club Insignia  
 Memorial Plaques

Representative: Mr. Irving Harris  
 P. O. Box 469  
 Jackson, Tennessee

*Compliments of*  
**FIRESTONE DEALERS**  
 Tires, Tubes, Batteries  
 Home and Auto Supplies  
 Robert Shannon, Manager, Portland

We believe in Upper Sumner Co.  
 Its people and its products  
**PORTLAND HARDWARE CO.**  
 A good Store in a good town.

*Compliments of*  
**CHANDLER'S STORE**  
 Portland, Tennessee

**WILLOW LAKE**  
 Highway 109  
 Fountain Head, Tennessee  
 Chas. S. Pond Phone 28J

**CONSUMERS DRUG CO.**  
 Portland, Tennessee  
 The Rexall Store

**THE FLOWER BASKET**  
 "Flowers whisper messages that  
 words cannot express."  
 Tel. 84 day Tel. 66 Night  
 Portland, Tennessee

**WILKINSON BROS. & WISEMAN**  
 Funeral Directors & Embalmers  
 Ambulance Service—Day or Night  
 Portland, Tennessee

Drink  
**ROYAL CROWN COLA**  
 The Drink That Refreshes!

*Compliments of*  
**JERNIGAN'S GROCERY**  
 Portland, Tennessee

**KELLEY'S ESSO STATION**  
 Atlas tires, Batteries, Accessories  
 Portland, Tennessee

**APPLIANCE & ELECTRIC CO.**  
 Chandler & Green  
 Portland, Tennessee

**REDDICK BARBER SHOP**  
 For that smooth, well-groomed look  
 Portland, Tenn.

**YOUNG DRUG COMPANY**  
 Your Prescription Store  
 Phone 69 Portland, Tennessee

**GOSSETT MOTOR CO.**  
 Ford Tractor & Implement Agency  
 Expert Auto Repairing

*Compliments of*  
**SHORT'S LDY. & DRY CLEANERS**  
 Phone 217J Portland, Tennessee

Wrecker Service—Day and Night  
 Paul Gossett Phone 40 and 141

COMPLIMENTS OF

STARK'S STUDIO

Gallatin, Tenn.

Air-Conditioned for your Comfort  
**ROTH'S JEWELRY STORE**  
 Gallatin's Leading Jeweler  
 Since 1887

Compliments of  
**PORTER WOMACH**  
 Sumner County Register

Compliments of  
**WORKMAN'S JEWEL CAVE**  
 Jewelry & Watch Repairing  
 Gallatin, Tenn.

I Buy and Sell Real Estate  
**HORACE ALEXANDER**  
 Phone 595J Gallatin, Tenn.

**BLUE JEWELRY CO.**  
 Gallatin, Tenn.

*Compliments of*  
**LAYON BROWN**  
 County Court Clerk

COMPLIMENTS OF  
**GALLATIN FLOWER SHOP**

Compliments of  
**PORTLAND COAL & SUPPLY CO.**  
 Portland, Tennessee

**A. L. SLOAN REAL ESTATE AND  
 AUCTION CO.**  
 Gallatin, Tenn.

Compliments of  
**S. W. DORRIS**  
 Groceries, Meats, Feed, & Produce  
 Portland, Tenn.

Compliments of  
**RANDY'S RADIO SHOP**  
 Gallatin, Tenn.

**CARUTHERS & ADAMSON**  
 Shell Products  
 Tires, Tubes, Accessories  
 Portland, Tenn. Phone 223

**JONES HATCHERY**  
 U. S. approved Pullorum chicks  
 Red Comb Poultry Feeds  
 Gallatin Phone 1000 Tenn.

*Compliments of*  
**WILLIAMS & PERDUE**  
 Gulf Station  
 Tires, Tubes, Accessories  
 Portland, Tenn. Phone 220

**GALLATIN BAG & MDSE. CO.**  
 Manufacturers outlet  
 Shop upstairs and safe.  
 Gallatin, Tenn.

Compliments of  
**FRED BRIZENDINE**  
 Groceries — Meats — Vegetables  
 Portland, Tennessee

HUBERT CREASEY LUMBER COMPANY

Service & Satisfaction  
 West Main Street Phone 44  
 Franklin, Kentucky

COMPLIMENTS OF <b>GILLESPIE DRY GOODS CO.</b> Established 1900 Franklin, Ky.	<b>BRACEY-HOGIN CO.</b> Sheet-Metal Plumbing Heating Phone 731 Gallatin
Compliments of <b>HUGHES HARDWARE CO.</b> Franklin, Ky. Oliver Farm Equipment	Refrigeration <b>JOHNSON'S</b> Commercial & Domestic Service Phone 659 Gallatin, Tenn.
Compliments of <b>HESTER CHEVROLET CO.</b> Gallatin, Tenn.	COMPLIMENTS OF <b>THE SUMNER COUNTY NEWS</b> Gallatin, Tenn.
Compliments of <b>GALLATIN BOOK STORE</b> Jewelry Sporting Goods School Supplies	Compliments of <b>LEE'S SERVICE STATION</b> Gallatin, Tenn.
COMPLIMENTS OF <b>BAKER MOTOR CO.</b> Gallatin, Tenn.	<b>L. A. GREEN SEED CO.</b> We buy and sell all kinds of seeds. Phone 662 Gallatin
<b>PAYNE BROS. SEED CO.</b> Garden & Field Seed Phone 757 Gallatin, Tenn.	Compliments of <b>MOORE MOTOR COMPANY</b> Sales & Service DeSoto & Plymouth Dealers Portland, Tenn.
<b>CRESCENT HILL MILK SERVICE</b> Pasteurized Dairy Products Homogenized (Vitamin D) Phone 72 Gallatin	Tractor Repair <b>MASSEY-HARRIS</b> Farm Equipment Franklin, Ky. Phone 681

PLANTERS TOBACCO WAREHOUSE

No. I and II

Carroll Johnson, Mgr.  
 David S. Bradley

R. S. Harsh  
 J. D. Harsh

"We appreciate your business."  
 Gallatin, Tenn.

<b>DONOHO MOTOR CO.</b> New and used Cars Phone 100 Gallatin, Tenn.	<b>R. C. OWEN TOBACCO CO.</b> Gallatin, Tenn.
Compliments of <b>FARMERS SUPPLY COMPANY</b> Gallatin, Tenn.	<b>BROWN MILLING CO.</b> Gallatin, Tenn.
Compliments of <b>KRAFT CHEESE CO.</b> Gallatin, Tenn.	Compliments of <b>ALBRIGHT TOBACCO WAREHOUSE</b> Gallatin, Tenn.
Compliments of <b>HANCOCK BURLEY SALES FLOOR</b> Gallatin, Tenn.	Compliments of <b>THE UPPER SUMNER PRESS</b> Portland, Tenn.
Compliments of <b>GALLATIN COAL &amp; LUMBER CO.</b> Everything to build anything! Phone 24	Compliments of <b>RAIL OIL COMPANY</b> Distributors of Shell Products Kelly Springfield Tires Phone 333 Gallatin, Tenn.
<b>BOOTH MOTOR CO.</b> Gallatin Recappers Khourdy Body Shop Gallatin, Tenn.	<b>MODERN EQUIPMENT CO.</b> International Harvester Dealer Home Freezers — Refrigerators Milking Machines — Milk Coolers Hot water Heaters—Electric Stoves Farm Tractors International Trucks Phone 762 Gallatin, Tenn.
Compliments of <b>GALLATIN TOBACCO WAREHOUSE CO.</b>	
<b>GOAD SERVICE STATION</b> Goodyear Tires, Batteries Texaco Products Portland, Tenn. Phone 162	



Compliments of PORTLAND MILLING CO. Portland, Tenn.	COMPLIMENTS OF PARKER SHOE SHOP Portland, Tenn.
Compliments of DEASY MACHINE CO. Portland, Tenn.	Compliments of W. L. BENTLEY'S 5 and 10 Cent Store Portland, Tenn. We extend hearty and sincere con- gratulations, Seniors!
HILL LUMBER COMPANY Manufacturers of Hardwood Lbr. & Bldg. Material Portland, Tenn. Telephone No. 92 Flooring Weatherboarding Ceiling Mill Work	Compliments of  H. M. GROTH Wholesale Fruits and Vegetables 326 Vaughn Street Nashville (7), Tennessee

Gallatin

H. A. Cage, Trustee  
Ed Lane, Circuit Court Clerk  
Vogue Beauty Shoppe  
Taylor Service Station  
Max R. Bandy, Druggist  
Brown & Dalton Dry Goods  
Blue Bird Beauty Shoppe  
Baulch Motor Co.  
W. N. Robertson & Co.  
National Farm Store  
Anderson, Yowell, Rippey Insurance Co.  
Crescent Furniture Co.  
Jones' Furniture Co.  
Thomas' Grocery  
Borden Creamery  
Kemp Motor Co.  
C. E. Northup & Sons



Portland

H. K. Shannon, Insurance  
Portland Hatchery  
Jenkins' Dry Cleaners  
Dawson Grocery  
Knight-Rippey Service Station



OF FRIENDS

*Taylor Publishing Company*

Your yearbook is a store of treasured memories. The oft repeated thrill of recollection which accompanies each new search through its pages will many times repay you for the care and consideration which has gone into its creation.

We are proud of the part we have had in preserving "treasured memories" in 1949 Annuals for more than 1100 Colleges and High Schools in seventeen States.

*Home of "Taylor made" Annuals*



TAYLOR PUBLISHING COMPANY

P. O. Box 597

6320 Denton Dr.

DALLAS, TEXAS

