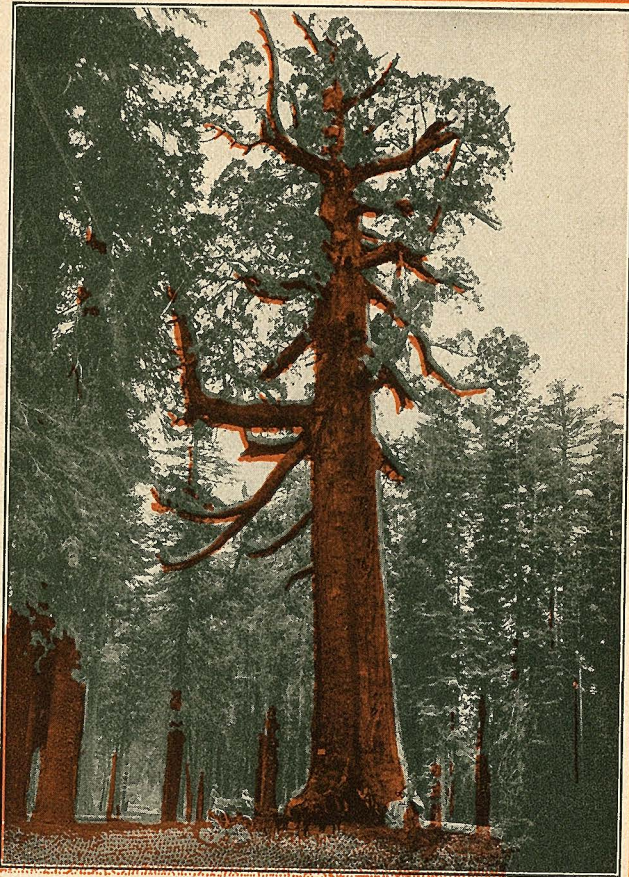


**YOSEMITE
MARIPOSA
BIG TREES
THE NEW WAY**



GRIZZLY GIANT

The rings of this old king of the grove, as scientists count them, give it a life of 8000 years. It was a full-grown tree when Abraham went down into Egypt, when the Pyramids were built, and for aught we know when Adam was expelled from Eden.

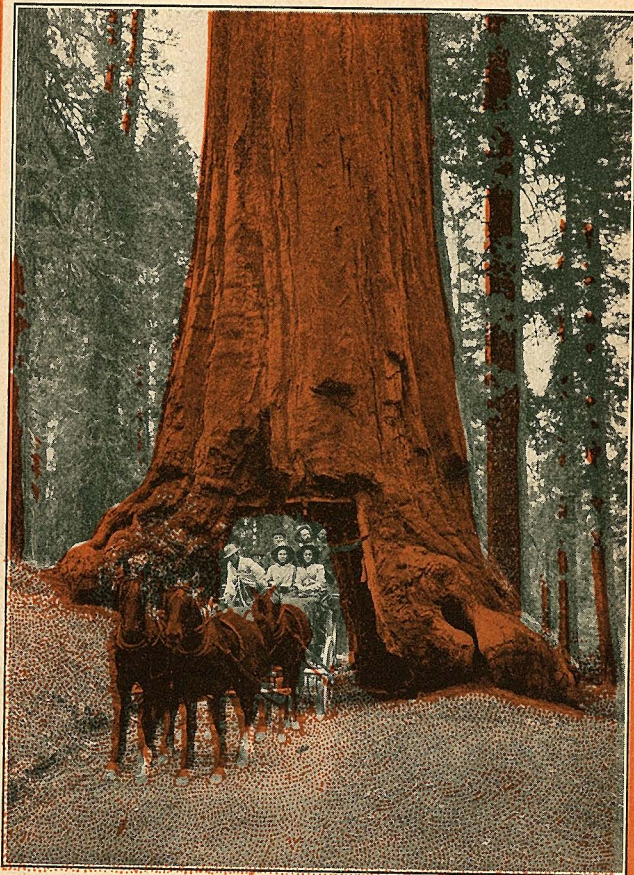
This is only one of the 600 Giants in the two Mariposa Groves.

WAWONA-MARIPOSA GROVE BIG TREES, INSPIRATION POINT, ARTIST POINT, GLACIER POINT, YOSEMITE—ALL INCLUDED IN THE "NEW WAY"—VIA HORSESHOE ROUTE.

COOL, QUICK AND CLEAN.

J. C. MARSHALL, PRINTER, 48 THIRD STREET, S. F.

**YOSEMITE
MARIPOSA
BIG TREES
THE NEW WAY**



WAWONA-MARIPOSA GROVE BIG TREES, INSPIRATION POINT, ARTIST POINT, GLACIER POINT, YOSEMITE—ALL INCLUDED IN THE "NEW WAY," VIA HORSESHOE ROUTE.

COOL, QUICK AND CLEAN.

Literature, Reservations and Tickets of

Wawona Hotel Company

WAWONA, CAL.

"The Purpose of a Journey is not to reach a Goal, but to find enjoyment on the Way."

YOSEMITE and the Mariposa Grove of BIG TREES are too well known to need extended description here.

Most of those who visit these famous places will do so but once. It is, therefore, well worth a little time and effort to inform oneself fully regarding the essentials to a most satisfactory journey; the best route; the necessary time, and the exact expense.

The purpose of this folder is to present, briefly, to a discriminating public the most satisfactory way to see the REAL BIG TREES and YOSEMITE.

We claim, and are prepared to prove, that the only right way to enter the Yosemite Valley is by Inspiration Point, and that the largest accessible group of BIG TREES is the MARIPOSA GROVE.

Both of these famous places are on the "WAWONA ROUTE," called the "NEW WAY"—The Horseshoe Route. Cool, Quick and Clean.

**AN OUNCE OF INFORMATION MAY SAVE
A TON OF REGRET.**

The size of this folder compels us to leave unsaid many things of vital interest to prospective visitors to Yosemite and the Big Trees.

It is not our purpose to misstate or mislead, as we expect every patron to be our best advertisement.

It will be to your advantage to let us give you the benefit of our 40 years' experience in handling Yosemite tourists.

For forty years nine-tenths of all the visitors to Yosemite went via the WAWONA Stage Route. More noted persons have ridden in the stages of this than of any other stage line in America.

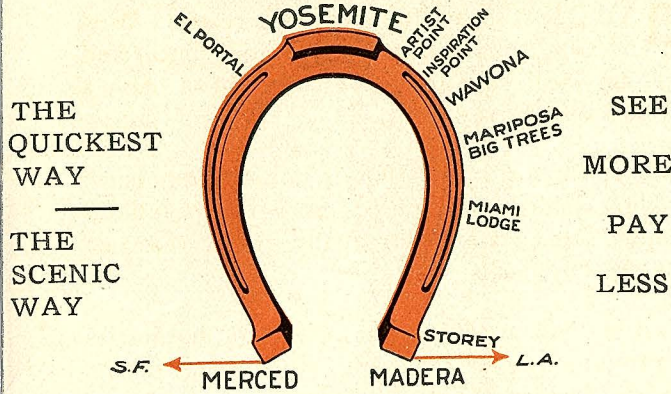
Ninety horsepower seven-passenger automobiles have supplanted the four-horse stages, eliminating time, dust and danger. Special party automobiles when desired.



VIEW FROM INSPIRATION POINT, ON THE "WAWONA" ROUTE.

All the Paintings Are Sketched From Artists' Point, one Mile Below Inspiration Point, on the "WAWONA" Road.

The Horseshoe Route



SPECIAL ANNOUNCEMENT

On or about June 1st, 1915, automobiles will be used on all the **MARIPOSA BIG TREE** and **WAWONA ROADS**. The present running time between all stations will be reduced one-half or more. The cars will be high powered, seven-passenger touring; the drivers thoroughly competent, reliable men, insuring absolute safety.

Under the schedule made possible by the change from horse-stages to automobiles, you can leave Yosemite twice daily—7:00 a. m. and 2:30 p. m.—for Wawona and Mariposa Big Trees, arriving at Wawona at 9:30 a. m. and 5:00 p. m. Leave Glacier Point at 2:30 p. m., arrive Wawona 5:00 p. m.

Returning, leave Wawona at 7:00 a. m. and 2:45 p. m., arriving at Yosemite at 9:30 a. m. and 5:00 p. m. The 2:45 p. m. car connects at Bridal Veil Falls with the stage, arriving at El Portal in time for sleepers to San Francisco by either Southern Pacific or Santa Fe.

Passengers arriving at Madera on the Southern Pacific or Storey on the Santa Fe, on morning trains, visit the **MARIPOSA BIG TREES** en route, arriving at Wawona at 5:30 p. m. Leaving Wawona in the morning, you visit the Groves en route to Storey or Madera, making connection with trains in either direction, arriving in San Francisco at 10 p. m. the same day or Los Angeles the next morning.

Special daily service between Yosemite and Glacier Point via Inspiration Point and Artist Point.

Parties arriving at Yosemite holding round-trip tickets, and desiring to **RETURN BY THE HORSESHOE ROUTE**, are entitled to a refund on the unused part of their tickets.

Further information regarding Tickets, Reservations, Hotel and Camp accommodations, and every possible detail of the trip can be obtained at the address on the first page of this folder; also at

- C. A. WILCOMB - - - - - Yosemite, Cal.
- PECK-JUDAH COMPANY - - San Francisco and Los Angeles
- THOS. COOK & SONS - - - San Francisco and Los Angeles
- SAN DIEGO TOURIST AGENCY - - - - -
- - - - - Savings Bank Bldg., San Diego
- HORSESHOE ROUTE - - 606 So. Spring Street, Los Angeles
- And all SOUTHERN PACIFIC and SANTA FE OFFICES

WAWONA

WAWONA, beautiful, peaceful, restful WAWONA. A quaint, elegant, old place, and an ideal spot in which to spend a day, a week or a season.

Famous for forty years for its unexcelled cuisine, its whole-souled hospitality, and its peculiarly charming setting amid perpetually green, Wawona is in a class by itself.

Wawona has entertained more foreign dignitaries and prominent men than any other place in the State, and is second only to Yosemite in its attractions of water-fall, meadow and mountain.

Here the weary rest, the Poet is inspired, the Artist entranced. Prolong your stay here and visit the Big Trees and Wawona Point, Chilnualna Falls, Glacial Lakes, Signal Peak and Indian Grist Mills. The Merced River flows through the grounds. Consider well all things and you will certainly choose the "New Way." Cool, Quick and Clean.

THE POPULAR AUTOMOBILE ROUTE

The "Wawona Route" has the smoothest roads—lowest grades—the best stopping places. There is enjoyment all the way. More than 400 automobile parties visited Wawona in 1914. There are charming auto drives all about Wawona.

The Wawona roads are all open to automobiles, including the road to the Mariposa Grove, Yosemite via Inspiration Point, and to Glacier Point.

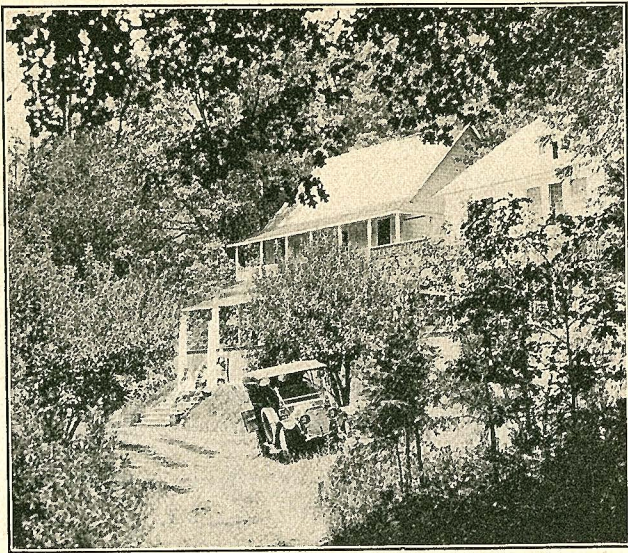
This is the only automobile road to Yosemite via Mariposa Big Trees and Inspiration Point.

Do you enjoy horse-back riding, camping and fishing where the conditions are ideal? Parties are completely fitted out at Wawona for long or short trips to the Lakes in the High Sierras.



Send for particulars to any address on this folder. Before you purchase tickets ask about the "WAWONA ROUTE," the **AUTOMOBILE WAY**—Cool, Quick and Clean.





MIAMI LODGE

The ride from Madera to Miami Lodge, in a 90-horsepower seven-passenger automobile in the cool of the morning, is a delightful contrast to the tedious confinement in a Pullman. This morning ride is one of a hundred similar surprises one thoroughly enjoys on the "New Way."

At Miami a bountiful lunch is provided.

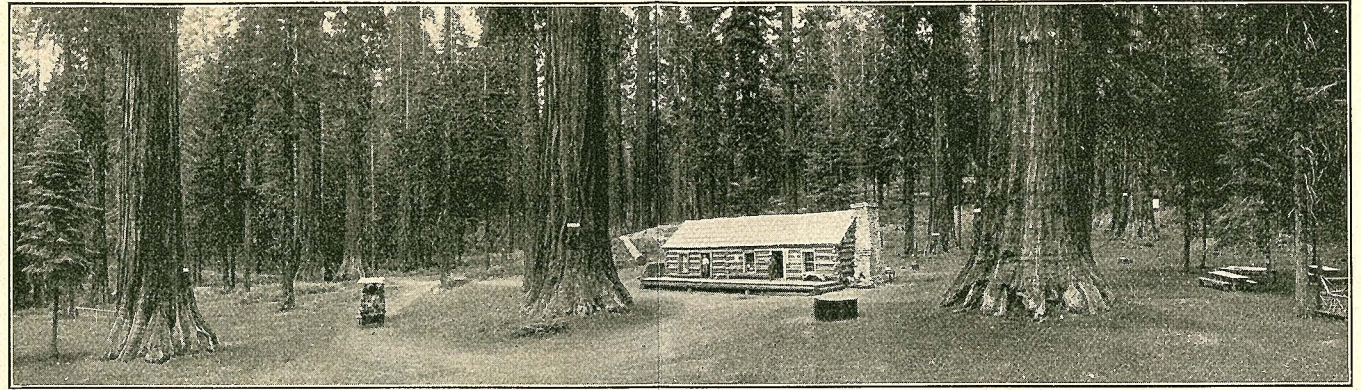
Miami Lodge is 4200 feet above sea level, always deliciously cool; a beautiful spot, with a dense forest as a background and overlooking the peaceful valley of the Miami Creek; it is one of the most picturesque resorts in California.

A garage and complete machine shop are located here. Work will be done as reasonably as in any city.

A good many persons buy round-trip tickets to Yosemite, expecting to see the Mariposa Big Trees, Inspiration Point and Glacier Point, but find upon reaching the Valley that, in order to visit these important points, side trips are necessary. We advise that you purchase a one-way ticket to Yosemite, that you may continue on the HORSE-SHOE ROUTE and not retrace your steps.

This "out-door" ride in the shade of a continuous forest, over mountain and through valley, is so novel and exhilarating, one only regrets the way is so short.

Nature and man have co-operated to make the Wawona Route—the Horseshoe Route—ideal in all respects.



Cabin, Mariposa Grove.

The "Big Three"—Grant, Sherman and Sheridan.

\$6.50 TO \$7.50 SAVED

We save you \$6.50 to \$7.50, and a DAY'S TIME taking the side trip to Yosemite and Mariposa Big Trees, by the "IN ONE WAY AND OUT THE OTHER" ROUTE.

On Eastern round-trip tickets there is a saving of \$6.50. On Local tickets, \$7.50.

COMPARATIVE STATEMENT

Los Angeles to Madera... \$ 8.90	Los Angeles to Merced... \$ 9.90
Madera to Wawona... 8.50	Merced to Yosemite and
Big Trees and Return... 2.00	Return... 18.50
Wawona to Yosemite... 6.50	Yosemite to Mariposa Big
Yosemite to Merced... 10.00	Trees and Return... 15.00
Merced to San Francisco... 4.05	Merced to San Francisco... 4.05
Total..... \$39.95	Total..... \$47.45

The same rates apply in either direction.



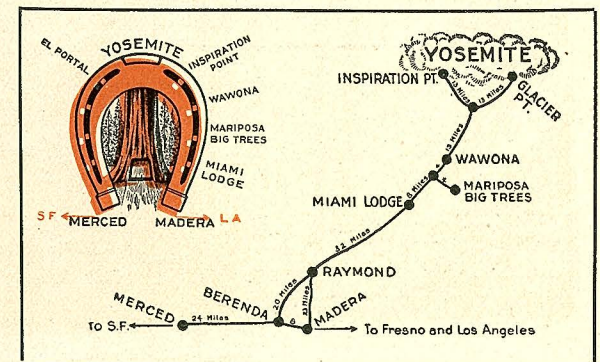
The Fallen Monarch, Mariposa Grove.

We have a special representative in Yosemite Valley whose duty it is to advise you regarding, and assist you in arranging, side trips; make your hotel and Pullman reservations; furnish tickets and assign stage seats. We have an office near the Sentinel Hotel with some one in attendance during business hours. Our agent also visits all camps regularly and at special times by appointment. From him you can get accurate information about the famous MARIPOSA Big Trees. You will not be satisfied until you have seen the REAL BIG TREES. Ask for the Mariposa Big Tree Agent.



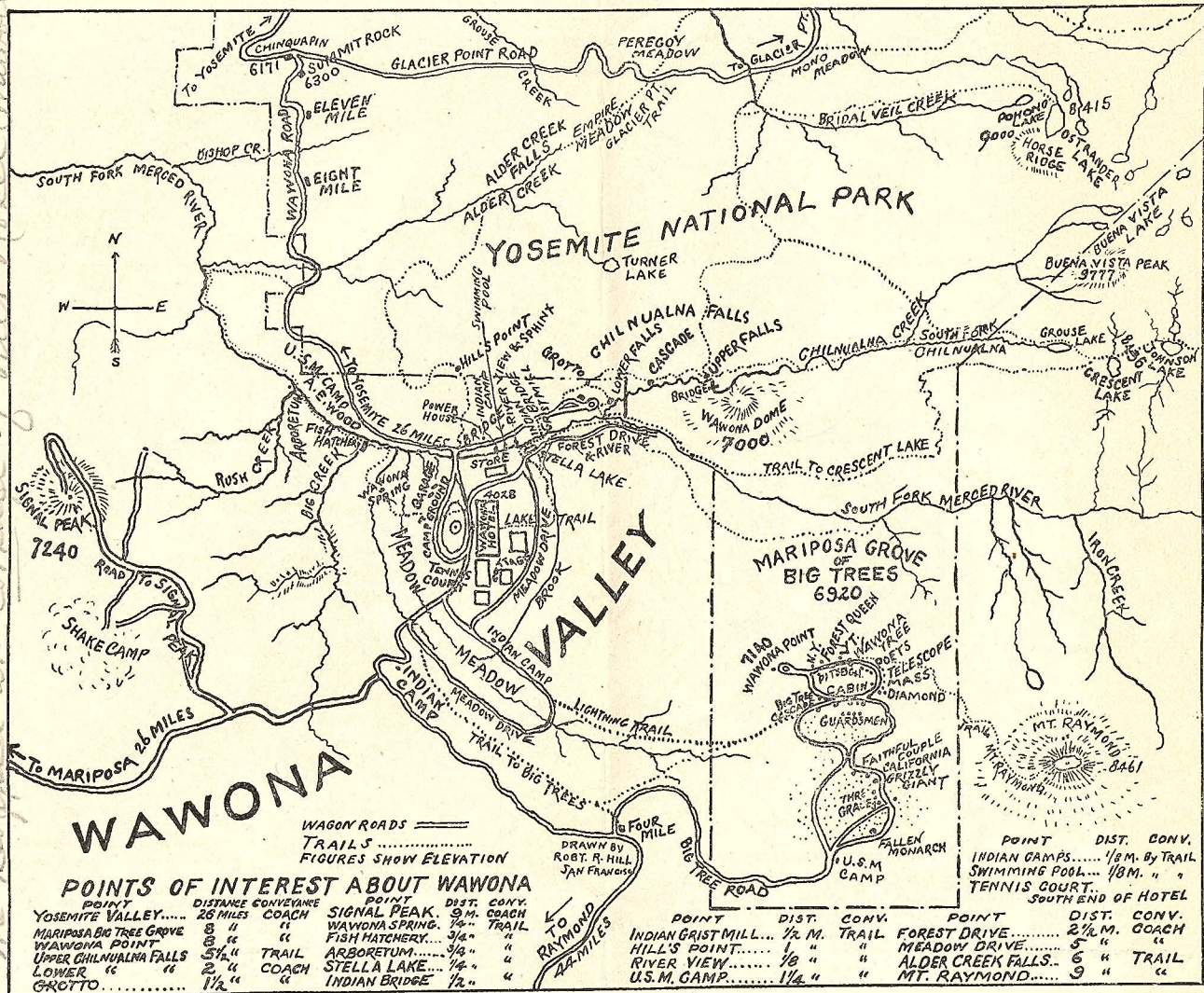
HOW TO GO

- Leave Los Angeles daily (sleeper).
- Leave San Francisco daily (sleeper).
- (Either Southern Pacific or Santa Fe).
- Arrive Madera next morning (breakfast).
- Leave Madera by automobile.
- Arrive Miami Lodge (lunch).
- Arrive Wawona, via Big Trees, 5:30 p. m.



Wp. + Wp. Porter, Co.

We obtained at Cottage of this Hotel Company



POINTS OF INTEREST ABOUT WAWONA

POINT	DISTANCE	CONVEYANCE	POINT	DIST.	CONV.
YOSEMITE VALLEY.....	26 MILES	COACH	SIGNAL PEAK.....	7 1/2	COACH TRAIL
MARIPOSA BIG TREE GROVE	8 "	"	WAYONA SPRING.....	3/4	"
WAWONA POINT	8 "	"	FISH HATCHERY.....	3/4	"
UPPER CHILNUALNA FALLS	5 1/2 "	TRAIL	ARBORETUM.....	3/4	"
LOWER "	2 "	COACH	STELLA LAKE.....	1/4	"
GROTTO.....	1 1/2 "	"	INDIAN BRIDGE.....	1/2	"

DRAWN BY
ROBT. R. HILL
SAN FRANCISCO

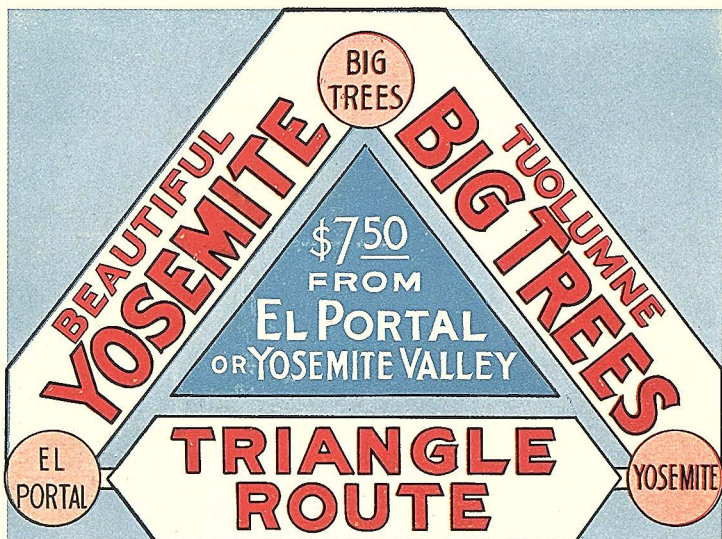
TO RAYMOND
24 MILES

POINT	DIST.	CONV.
INDIAN GRIST MILL.....	1/2 M.	TRAIL
HILL'S POINT.....	1 "	"
RIVER VIEW.....	1/8 "	"
U.S.M. CAMP.....	1 1/4 "	"

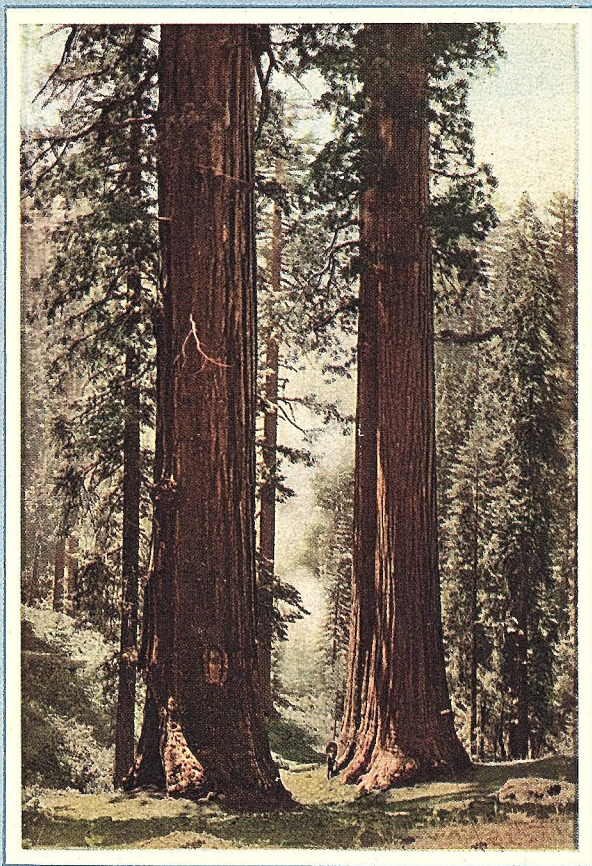
POINT	DIST.	CONV.
INDIAN CAMPS.....	1/8 M.	By TRAIL
SWIMMING POOL.....	1/8 M.	"
TENNIS COURT.....	"	"

POINT	DIST.	CONV.
FOREST DRIVE.....	2 1/2 M.	COACH
MEADOW DRIVE.....	5 "	"
ALDER CREEK FALLS.....	6 "	TRAIL
MT. RAYMOND.....	9 "	"

COMPLIMENTS OF WAWONA HOTEL COMPANY
WAWONA, MARIPOSA CO., CALIFORNIA



VIA MERCED-YOSEMITE VALLEY R.R.



THE NEW ROAD JUST OPENED

Two Trips in One—Saves Time and Money
BIG TREES AUTO STAGE LINE

625 Market Street, San Francisco

AGENTS—

Mack A. Erwin, Yosemite Excursion Bureau, 618 So. Spring St., Los Angeles; Yosemite R. R. Co., Merced, and all its agents; Camp Curry, 681 Market St., San Francisco, Cal., and all its agents; Supple-Leedke, 830 Market St., San Francisco, Cal.; Frank's Tourist Co., 306 Broadway, N. Y., and all its agents; Marster's Tourists Co., 248 Washington St., Boston, and all its agents.

See other side for agents continued

GIANT REDWOODS OF THE TUOLUMNE GROVE

THE BIG TREES (*Sequoia Gigantea*)

"BETWEEN the heavy pines and silver fir belts," writes John Muir, "we find the Big Trees, the kings of all the conifers, the noblest of a noble race."

The oldest of living trees—the oldest things alive today in the world—are found only on the western slope of the High Sierras at an altitude of 3500 to 8000 feet above the sea. They attain a height of four hundred feet and a circumference of over one hundred feet, with bark forty inches thick and some have been estimated to be four thousand to five thousand years old.

There are several groves of these wonderful trees not far from Yosemite, the nearest and the most accessible being the famous Merced Grove, near Hazel Green, the chief attraction of the old Coulterville Road to Yosemite—and the Tuolumne Grove near Crockers, on the Big Oak Flat Road.

These trees fill the tourist with wonder and reverence and this trip should not be missed by the visitor to Yosemite this season.

The new TRIANGLE ROUTE makes a trip to the Big Trees one of ease and low cost and takes but four hours of the time of your itinerary to Yosemite.

Auto trips will leave El Portal in the morning, stopping at the Big Tree Grove and arriving in Yosemite for luncheon, or, if it suits your convenience best, the tree trip can be made from Yosemite, leaving after luncheon and arriving at El Portal for supper and in ample time to take the night Pullman service, arriving in San Francisco early the next morning. Or you can rest at the delightful Hotel Del Portal and leave El Portal the following morning.

Emerson Hough, writing of the Giant Redwoods in the *Saturday Evening Post*, says: "Sequoias are not trees, but living monuments—the sap of the Sierras in their blood and their ambition is the blue sky. Their immensity we do not grasp. They come as near being immortal as anything we shall see in the history of this globe of ours you may see little Sequoias growing as classy and distinctive as their ancient forebears. Life—life undying is the theory of the Sequoia. We have no other creature like it in the world. It was never meant simply for the use of man, but for man's reverence, his admiration."

You should not fail to take advantage of this opportunity to see the most wonderful trees of the world—to be among them,—to be under them—to touch them—and to walk

around them, then you begin to realize what a big tree is. In height to compare with the modern sky-scrapers of the big cities or the length of a city block,—and these trees today are the heritage of all the people, saved from destruction by the hungry lumberman—a gift of our nation for all time—to the sightseers of the world.

The Merced Grove of Big Trees was visited via the old Coulterville Road to Yosemite and drew thousands of tourists to that route before the Merced-El Portal Railroad was built.

The Tuolumne Grove of Big Trees is about twelve miles by the new auto road from El Portal. This grove is on the Big Oak Flat Road, which was the old-time popular northern route to Yosemite for travelers and campers; these trees are still a memory never to be forgotten by them.

The most striking tree of this grove is the "Dead Giant," the tunnel tree through which the auto passes. This tree was the first big tree in the world to be tunneled and it gives you a proper idea of its diameter, which is now over 30 feet with an opening 10 feet square. The "Dead Giant" is now but a burned stump 100 feet high and 105 feet in circumference. And it has been estimated by scientists that its living height was between 400 and 500 feet and with the bark at least 40 feet in diameter. This was undoubtedly the largest tree in the world at that time. It was destroyed by forest fire or lightning about 300 years ago. Other famous trees in the Tuolumne Grove are "The Siamese Twins," "General Lawton," "Fallen Giant," "King of the Forest," and many others.

The "General Lawton" is one of the most perfect of trees.

The "Fallen Giant" fell in the spring of 1912 and is partially alive today, some of the branches are still green—as the roots are not injured—will probably continue to live—a "sleeping giant," probably the only fallen Sequoia, living and growing.

The "King of the Forest" is the largest burned tree in the grove and was 40 feet in diameter at the ground. At 7 feet from the ground it measures 34 feet in diameter.

These trees are living and are said to have no natural death. Go there, traveler, and see for yourself, and then "take off your hat" to old age, for these are wonderful trees.

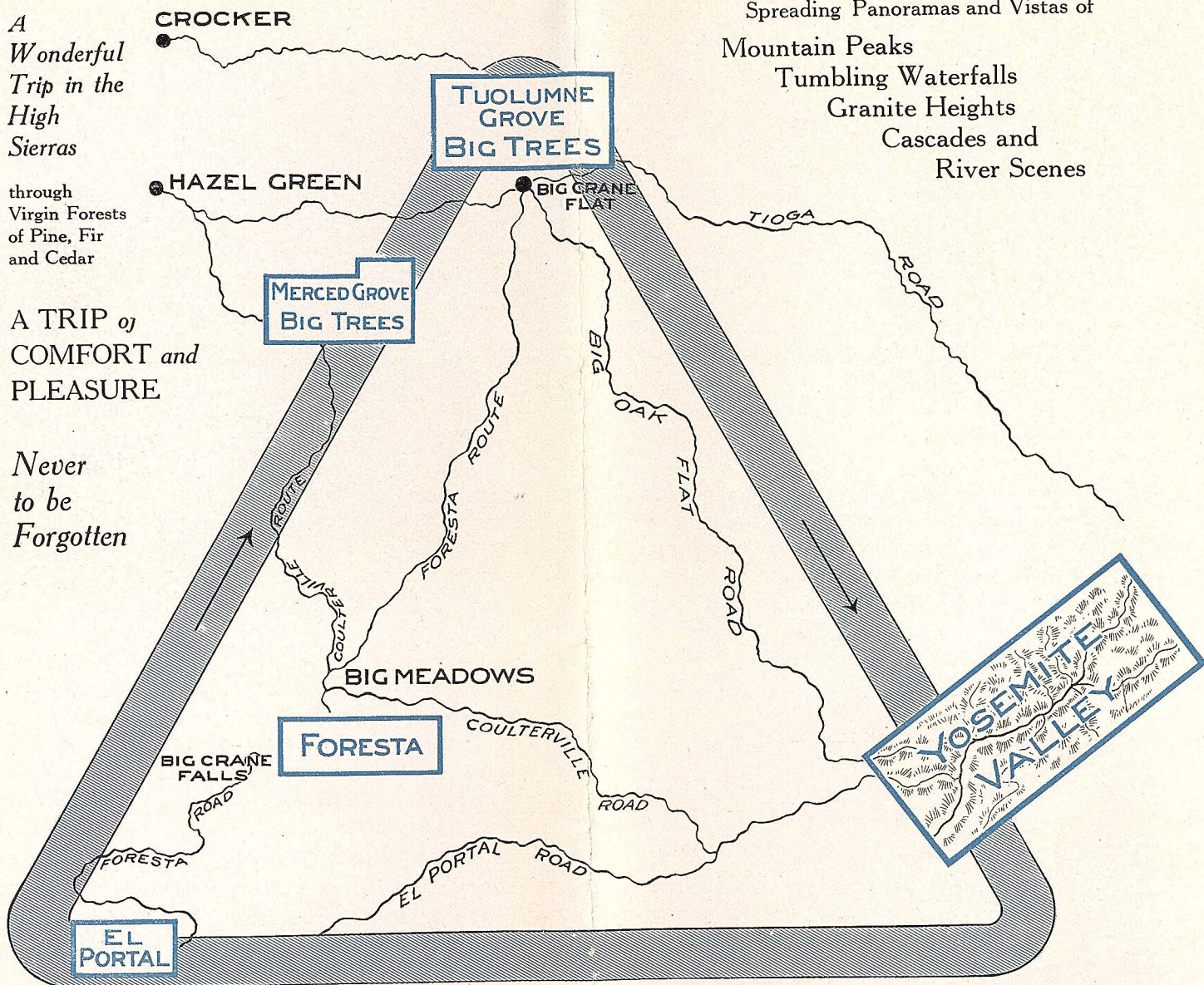
*A
Wonderful
Trip in the
High
Sierras*

*through
Virgin Forests
of Pine, Fir
and Cedar*

*A TRIP of
COMFORT and
PLEASURE*

*Never
to be
Forgotten*

Spreading Panoramas and Vistas of
Mountain Peaks
Tumbling Waterfalls
Granite Heights
Cascades and
River Scenes

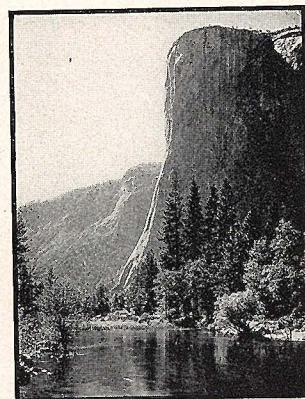


THE TRIANGLE ROUTE AT A GLANCE

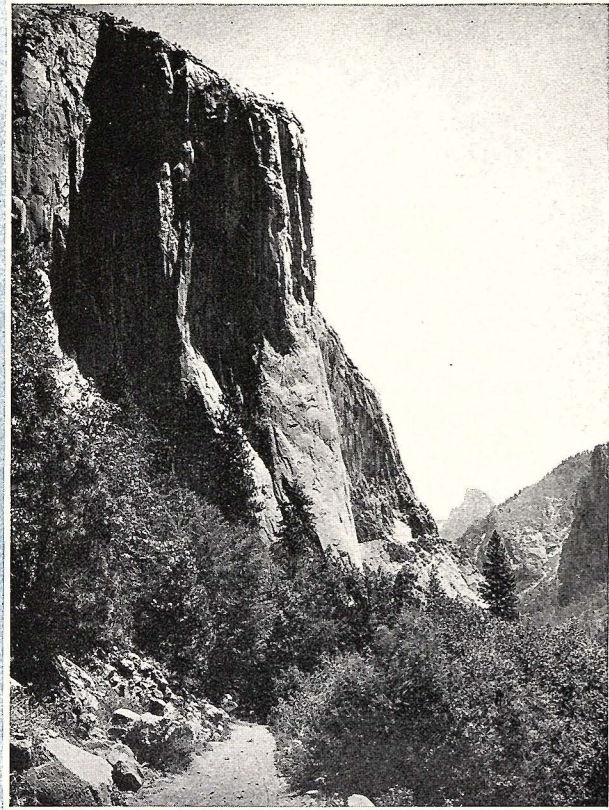
IT IS EASY TO SEE HOW TIME IS SAVED

Five Hours Covers the Entire Trip—Arriving in Yosemite

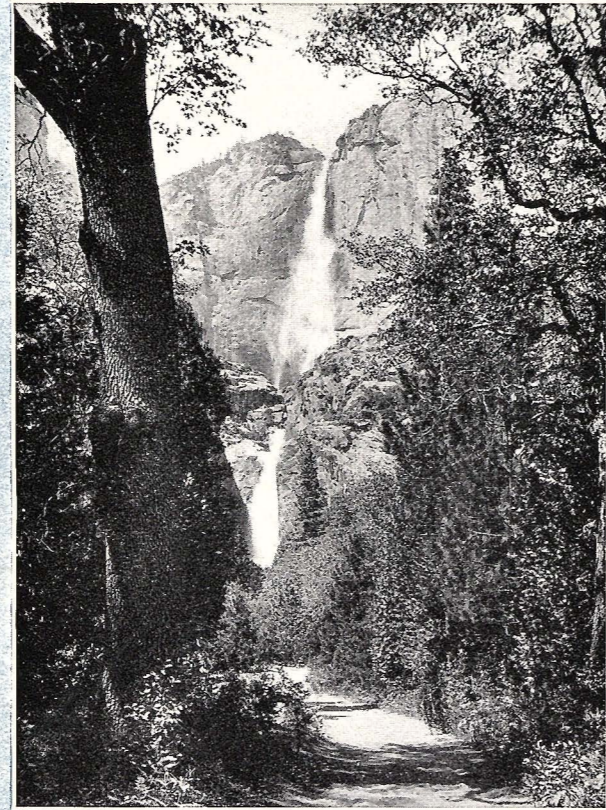
Four Hours of This Takes You to the Wonderful Big Trees



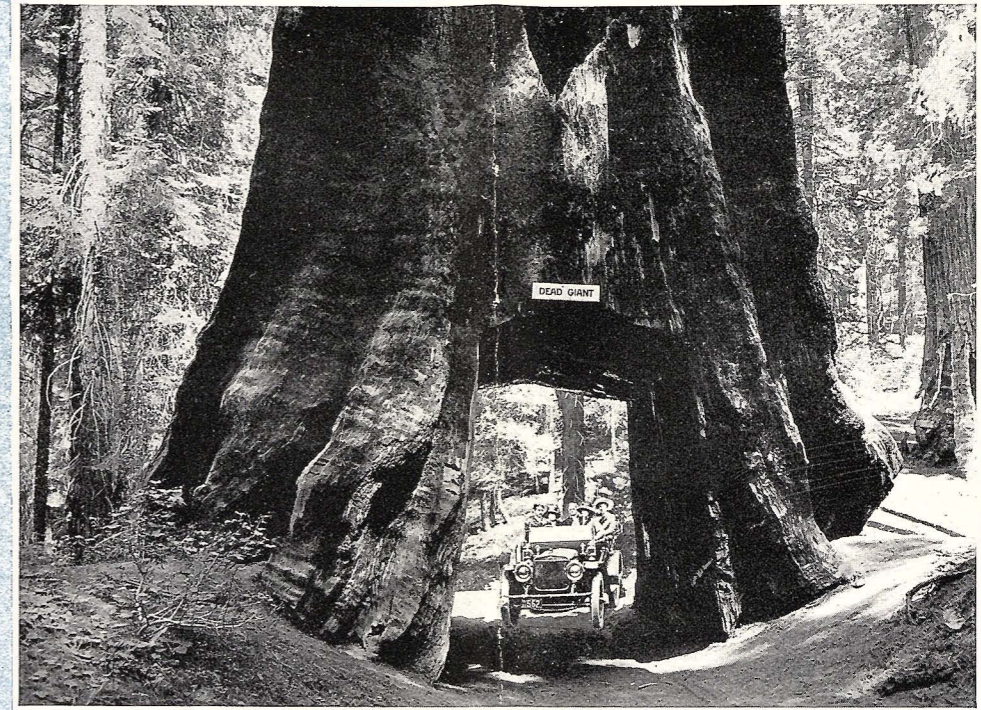
EL CAPITAN



EL CAPITAN FROM BIG OAK FLAT ROAD



YOSEMITE FALLS—2600 FEET



YOSEMITE

The Yosemite National Park—in the crest of the High Sierras of California—embraces a territory of 1,124 square miles and is situated in Tuolumne, Mariposa and Madera counties.

The famous YOSEMITE VALLEY—as well as the Tuolumne Big Trees and other groves of sequoias are within this national park.

YOSEMITE—supreme in charm and beauty—has no rival on earth for its many natural attractions and points of interest—for the world's travelers and sightseers—and should be first of all our wonderlands to attract the visitor to California.

YOSEMITE VALLEY is a great chasm in the center of this national reserve, close to its western boundary and only 14 miles from El Portal (the railroad terminus). In length about 7 miles and a width of three-quarters of a mile, the floor of the valley 4,000 feet above sea-level, and the granite rim walls rising to the height of 2,500 to 5,000 feet.

The beautiful Merced River winds through the valley, in and out of forest and meadow, smooth and placid, or wild and swift in tumbling cascades and roaring waterfalls. Sheer granite heights of towering spires, cliffs and domes, or snow-capped peaks rise one after the other with many waterfalls from 300 feet to half a mile in height—offering pictures of supreme beauties at every turn. One is amazed that such a vast amount of sightseeing is encompassed in so small a spot.

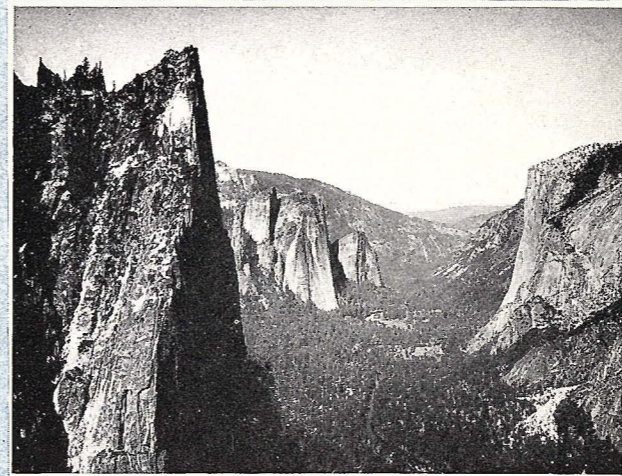
Fine roads and trails lead to all points of interest which can be easily walked or enjoyed by drive or saddle animals.

The western entrance is guarded by El Capitan on the north and the Bridal Veil Falls and the Leaning Tower to greet you on the south—then picture after picture as each point of interest is passed—making your visit here one of supreme delight to linger always in your memory as the most beautiful spot in the world.

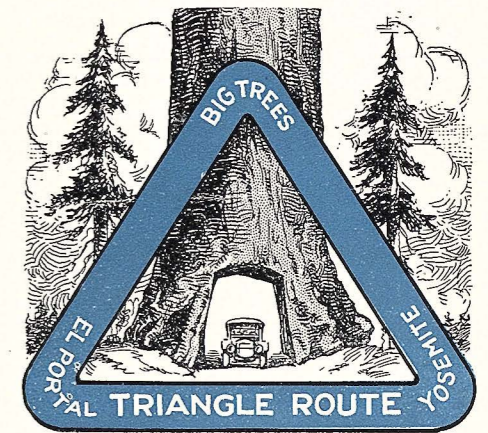
SCHEDULE		
TIME LV.	EL PORTAL—TREES—YOSEMITE	ELEVATION
7:00 a. m.	El Portal	2,000 ft.
8:00 a. m.	Foresta	4,500 ft.
9:00 a. m.	Tuolumne Grove (stop for sightseeing)	6,000 ft.
10:30 a. m.	Brown Jug Meadows	6,800 ft.
11:00 a. m.	Tamarack Flat	6,390 ft.
12:00 m.	Ar. YOSEMITE	4,000 ft.

SCHEDULE		
LEAVE	YOSEMITE—TREES—EL PORTAL	TIME
Yosemite		1:00 p. m.
Tamarack Flat		2:00 p. m.
Brown Jug Meadows		2:30 p. m.
Tuolumne Grove (stop for sightseeing)		3:00 p. m.
Foresta		5:00 p. m.
EL PORTAL		6:00 p. m.

Pullman Sleeper for San Francisco, arrive next morning.



VALLEY VIEW FROM SHORT GLACIER POINT TRAIL



THE NEW "TRIANGLE ROUTE"

Auto Route Description

The trip to the Big Trees is made in comfortable automobile stages with ample seating capacity for each passenger.

NO BAGGAGE is carried on this trip, baggage must be checked through to Yosemite to the hotel or camp—on the regular ticket—to be there in advance of your arrival.

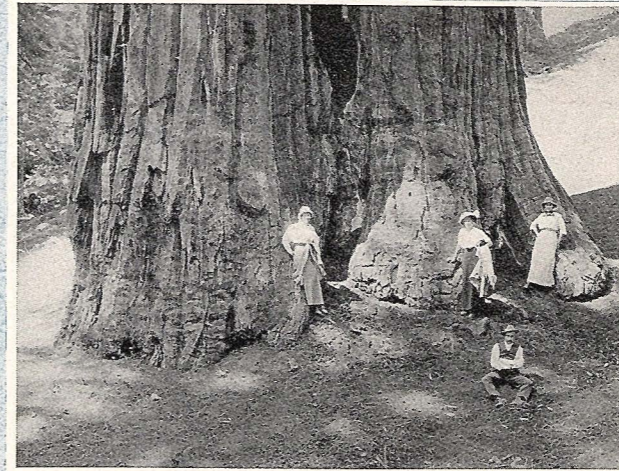
Leaving El Portal 7:00 a. m., after breakfast, the new road ascends an almost solid granite wall upwards 2,000 feet, and crossing Crane Creek soon reaches Foresta. The views from this portion of the road are startling. Vistas and panoramas opening before you at every turn. Now you are looking down the Merced River Canyon, the river a mere silver line in the rich green of the vast forest growth. Again the view looks down on the main entrance to the Yosemite National Park, one mile east from El Portal, guarded by sheer granite cliffs and towering mountain slopes. Across the canyon spreads the vast timber belt of pines, cedars and firs, with Chinquapin Falls to the left, while to the right is the wonderful incline logging road operated by a steel cable 8,000 feet in length and said to be the steepest in the world—over 87% grade. Every ten minutes mammoth logs are taken from the mountain tops to the Y. V. R. R. below at El Portal.

From Foresta, on the Coulterville Road, the trip is through virgin forests, the air balmy with the odor of the pines and firs and blossoming wild flowers and occasionally

the interesting sight of deer, bear and other wild animals of the Sierras.

We soon reach the Tuolumne Big Tree Grove, where a stop is made for sightseeing, and from here, leaving the Trees and traveling direct to Yosemite by the Big Oak Flat Road—about three miles we reach the highest portion of our ride, being over 7,000 feet above the sea. Then passing Gin Flat and Brown Jug Meadows, we soon arrive at Tamarack Flat. Gentrys is eight miles from the Yosemite Valley and at the top of the Big Oak Flat grade. Along this portion of the road Yosemite opens its wonderful picture. Beginning at NEW INSPIRATION POINT each turn gradually reveals all the charms and grandeurs of this wondrous panorama of beauty and color. Down the road you go for four miles until you cross the Merced River at Pohono Bridge and then you are on the floor of Yosemite Valley. A picture at every turn, nowhere in the world an equal to be found. Four miles more and you arrive at your stopping place in time for lunch.

If you choose to go to Yosemite direct from El Portal you can book for the BIG TREES trip when you are ready to return from Yosemite. By leaving Yosemite at 1:00 p. m. and taking the same route as above for return, you reach El Portal at 6:00 p. m., and after supper can take the Pullman sleeper and arrive in San Francisco early the next morning, or remain overnight in the delightful hotel and return the following morning.



IN TUOLUMNE GROVE

DON'T RETURN HOME UNTIL YOU
HAVE SEEN

The Big Trees

The entire trip taking but five hours, which is only four hours extra to the regular time of the Yosemite Trip.

With the advantage of

New Sightseeing

both going and returning from Yosemite instead of traveling the same route both ways.



"FALLEN GIANT"

SEE THE BIG TREES AT THE COST
OF ONLY

\$7.50

Saves Time

Saves Money

See These Giants of the Forest

The Oldest Trees on Earth

No trip to Yosemite is complete without the side trip to the Trees

The Triangle Route appeals to the traveler, for it saves time and the extreme low cost of this extra sightseeing.



TO THE TOURIST

OF LIMITED TIME—THIS SPECIAL

THREE DAYS ITINERARY

Offers the grandest sightseeing trip in the world. Seeing all the features of Yosemite, including the side trip to the Giant Redwoods.

Leave Saturdays only (ticket 15 days' limit) three days trip as follows:

Round trip, San Francisco to Yosemite, \$20.00
Camp in Yosemite two days 5.00

(Six meals, two single lodgings)

Supper, El Portal (first-class) 1.00

Triangle Trip to Big Trees, and Yosemite 7.50

Pullman Sleeper (lower berth) 2.00
(Upper Berth \$1.60)

Cost \$35.50

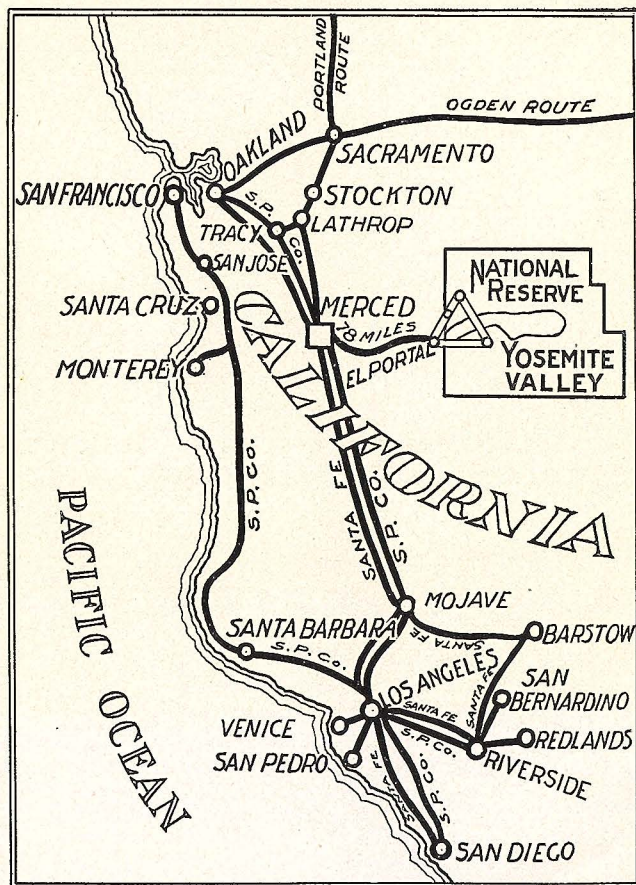
Unlimited 90-day ticket, good any day and allows stop-overs \$3.00 extra

Side trip from Merced and return for overland tickets, makes three day trip \$33.00

Nine Days Special Vacation 33.00

Big Trees via El Portal or Yosemite 7.50

\$40.50



RAILROAD SCHEDULES

STATIONS	S. P. Co.		
	Daily	Daily	Sat. Only
Lv. Ferry Station, San Francisco	9 20 AM	11 40 PM	7 20 AM
Lv. Oakland (16th St.)	9 52 AM	12 14 AM	7 52 AM
Lv. Oakland (1st St.)			
Lv. Sacramento	10 15 AM		
Lv. Los Angeles		10 00 PM	10 00 PM
Lv. Los Angeles		7 30 PM	7 30 PM
Santa Fe			
Lv. Ferry Station	9 00 AM	11 55 PM	7 00 AM
Lv. Oakland	9 20 AM	11 55 PM	7 30 AM
Lv. Los Angeles		5 00 PM	5 00 PM
Ar. El Portal	6 20 PM	11 35 AM	4 15 PM

Through Pullman Sleeping Car on night train, via San Francisco and Oakland. Open for occupancy after 9.00 p. m.

Pullman passengers will take breakfast at Merced and supper at El Portal. Returning from Yosemite through sleepers leave El Portal, summer season, daily, 8.00 p. m.; arrive San Francisco 8.00 a. m.

Day train leaves El Portal 7.20 a. m., arrive Merced 11.00 a. m., connecting with S. P. or Santa Fe for San Francisco or Los Angeles.

GOOD HOTEL AND CAMP ACCOMMODATIONS

Ample accommodations are provided in the valley for the traveler at very reasonable rates.

Camp Ahwahnee	\$3.00 per day
Camp Curry	2.50 "
Camp Lost Arrow	2.50 "
Glacier Point Camp	3.00 "
Glacier Point Hotel	4.00 "
Sentinel Hotel	\$4.00 to 5.00 "
Hotel del Portal	4.00 to 5.00 "

DISTANCES FROM YOSEMITE VILLAGE

Carriage Drives

Mirror Lake 3 m.	Bridal Veil Fall 4 m.
Foot of Lower Yosemite Fall 3/4 m.	Cascades 8 m.
El Capitan Bridge 3 m.	Happy Isles 2 1/2 m.

Trail Trips

Foot of Upper Yosemite Fall 2 3/4 m.	Cloud's Rest 11 m.
Top of Upper Yosemite Fall 4 1/4 m.	Glacier Point 4 1/2 m.
Yosemite Point 5 m.	Sentinel Dome 5 1/2 m.
Eagle Peak 7 m.	Round trip, Vernal and Nevada Falls, Glacier Point and Sentinel Dome 19 m.
Top of Vernal Fall 5 m.	Glacier Point, via Vernal and Nevada Falls 14 1/2 m.
Top of Nevada Fall 6 m.		
Little Yosemite 8 m.		

TABLE OF ALTITUDES

Waterfalls

Yosemite—		Bridal Veil 940 feet
Upper Fall 1,600 feet	Vernal 350 feet
Middle Fall 600 feet	Nevada 605 feet
Lower Fall 400 feet	Ribbon 3,300 feet

Points, Peaks and Domes

Three Graces 3,400 feet	Half Dome 5,000 feet
Cathedral Rock 2,660 feet	North Dome 3,725 feet
Cathedral Spires 2,579 feet	Three Brothers 3,830 feet
 2,678 feet	Eagle Peak 3,900 feet
Sentinel Rock 3,100 feet	El Capitan 3,300 feet
Sentinel Dome 4,125 feet	Inspiration Point 1,200 feet
Glacier Point 3,250 feet	Round Tower 2,400 feet
Mt. Starr King 5,100 feet	Cloud's Rest 6,000 feet
Cap of Liberty 2,000 feet	Yosemite Point 3,220 feet

Elevations in this folder are estimated from the floor of the valley, which is 4,000 feet above the sea level.