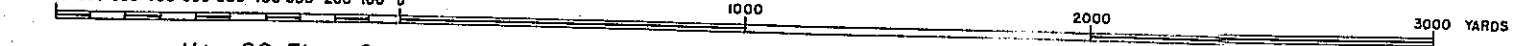


**CULEBRA ISLAND
WEST INDIES**

COMPILED BY INTELLIGENCE SECTION FLEET MARINE FORCE
JUNE 1936
SCALE 1:20000



- V1. - 20 Ft. - Contours approximate only from sketches and aerial photographs
- Control - United States Coast and Geodetic Survey Chart No. 914
- Additional information from sketches and aerial photographs
- Heights in feet above high water
- Soundings in feet at mean low water
- △ - Approximate location of artillery markers
- - local 1000 yard grid

R.D. 1410.

MAP NO. WI-781 sheet No. 1.

R.D. 1410

MAP NO. WI-783 sheet No. 2.