



main Street TAZEWELL VA

1920 '5

note = See Street car line
in middle of street

Tazewell main st in 1920^s
note street car line in middle
of the st



June T - of court = 1821
Thomas Witten Gentleman, produced in court
a commission to be Sheriff of Tazewell county
' and qualified as such

Hezekiah 1831 Harmon qualified as
sheriff under a commission of the
Governor

mill at Maxwell was the Andersons mill in 1845
now known as Graybeal's mill

1812 - William Hall, Sheriff of TAZEWELL
county, be allowed "Ten Dollars" for six months
services...

1858 order that the Sheriff of this county, TAZEWELL
be fined \$10.00 for failing to attend court

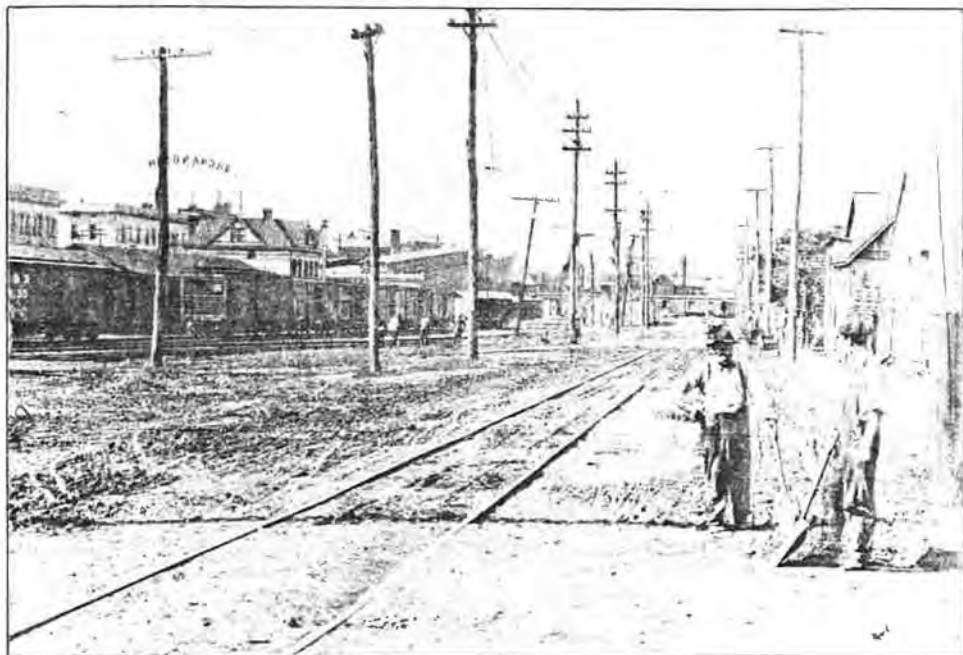
1815 David Word sheriff appointed by
the Governor

ordered that John Perry, ¹⁸¹⁶ Joe Davidson,
and Thomas Witten be recommended to his
excellency the Governor as fit persons to
execute the office of Sheriff of this county
for the ensuing year.

Records doesn't show how many become
sheriff: one, one all three.

Three men were mentioned several times
as Sheriff in the 1800's

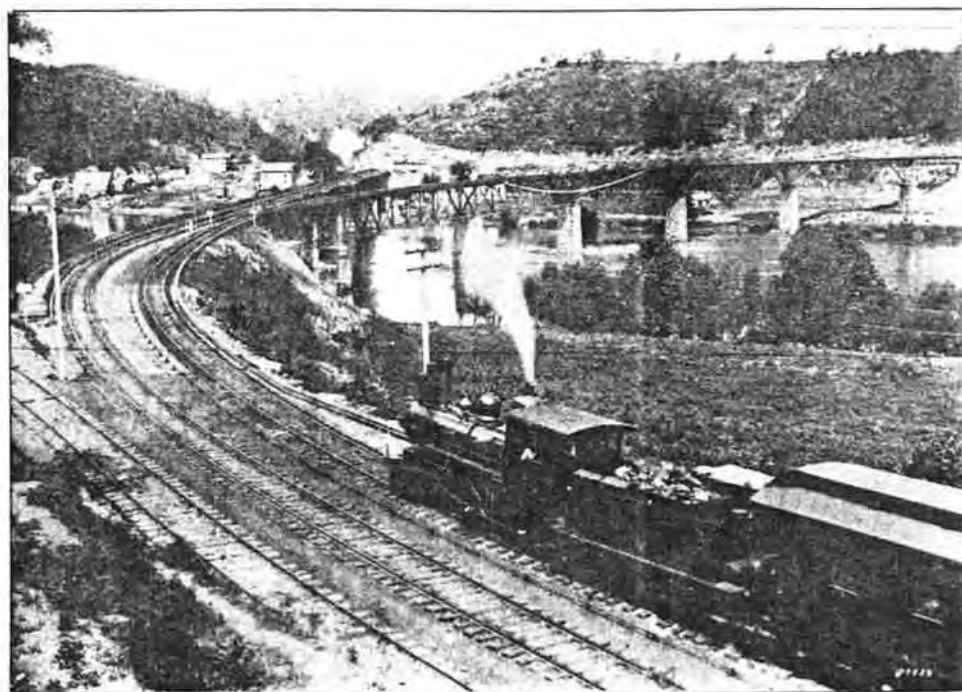
Records were Poorley, Kept



TAE EWELL
1.2
ROCKE, K2

WORKERS CLEAR
the brick pavement of
Tazewell Avenue in a turn-of-
the-century scene along the
NW tracks. Hotel Shenandoah
(sign at left) on Salem
Avenue was later renamed the
Hotel Earle.

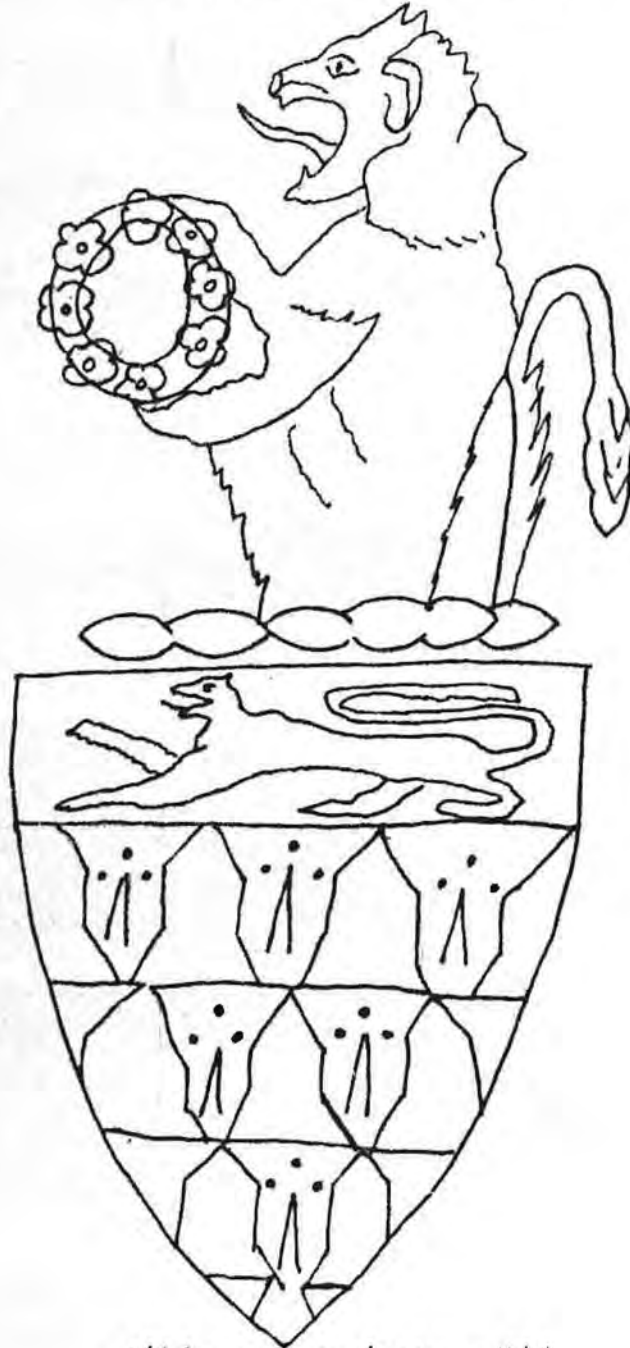
RAILROAD TRAFFIC
to West Virginia passed
over the New River in Pulaski
County on this curved bridge,
unique in railroad structures.
Built in 1888, it was razed in
1905. The town of New River
at left was a thriving settle-
ment during this period,
boasting two hotels (three-sto-
ry buildings in the back-
ground) and a newspaper.
Fireman seen in the cab is
James H. Giles; the engineer
is Mr. Bishop.



GUN-TOTING MAYOR: Joseph W. Lipop, Clifton Forge's
first mayor around 1900, liked to sit on the courthouse steps
and shoot cans off a nearby fence

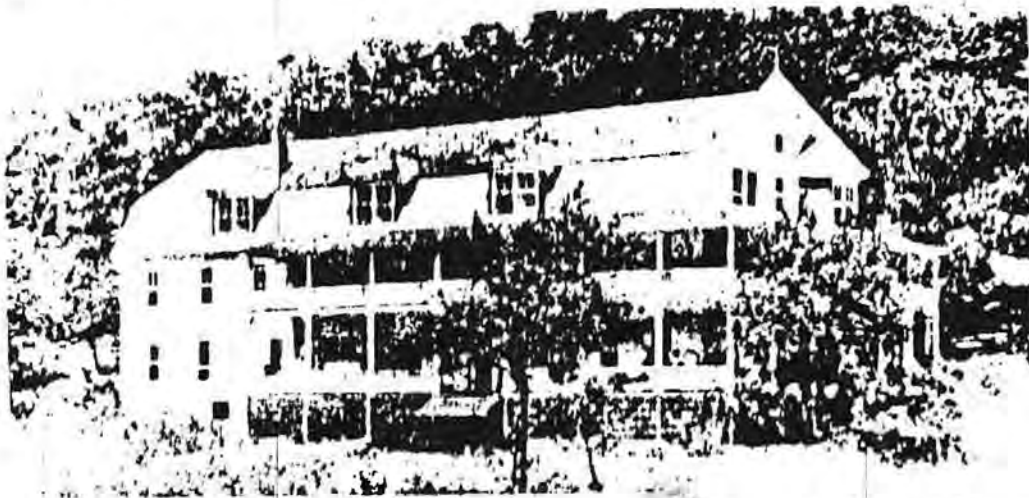
Virginia in 1799. Note the spelling of "Taswell" on the coat of arms. This was sent from England by a descendant of Senator Henry Tazewell for use in this book.

Taswell Coat of Arms



Visitation of London - 1664

Many visitors came to Tip Top by train where they were met by buggies for transportation to the hotel. When automobiles became popular the number of visitors, especially from Bluefield, declined. It was a social center for people from Tazewell, Mercer and McDowell Counties at its height, and associated with it at one time were Doctors Steele, Pyott, Pierce and St.Clair.



Iron Lathia Springs hotel was one of the best in Southwest Virginia.



The Court House, about 1900.

Tazewell