

The
Kodak Book No 1

Cumberland Extension
Western Maryland R.R.
Hancock, Md.



June 1904 - Sept. 1905
Resident Engineer on
Comberland Extension of
Western Md. R.R.



Passing Park Head



S. Q. Barlow Chief Eng. W.M.



Steel Viaduct at McCoys Ferry
W.M.R.R.



Charlton Station W.M.R.R.



Town of Hancock Md. 1905



*Canal & River Bridges
Hancock Md
Town "Jail"*



*Barton House - Hancock Md.
Geo. Washington Stopped here*



Hancock

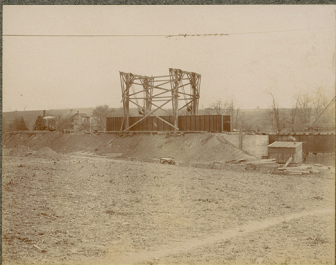


Maryland

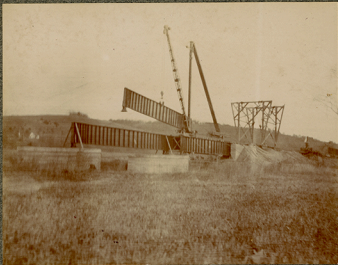
Round Top Camp



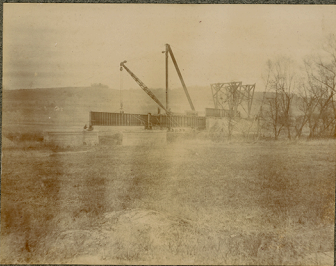
Great Tonoloway Bridge



Great Tonoloway - Gallows Frame



Great Tonoloway Bridge Erection



*Pennsylvania Steel Co
Gt. Tonoloway*



Round Top Cement Works
Macon, Ga



Retaining Wall 755
C. & O. Canal



Bluff work



Difficult cross-sectioning
Sta 755



Fl Work 2



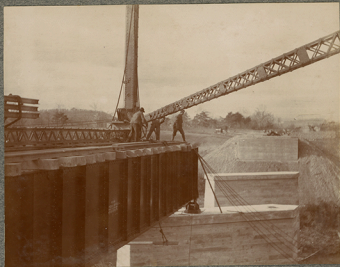
Pete Mary Roy



Rock Cut 715



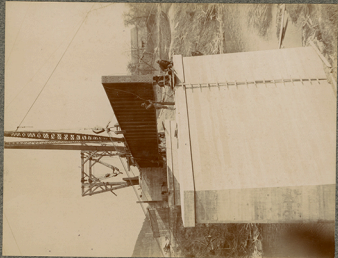
Roy Pete Ornick



Erecting Great Tondelway Bridge



Clamps for Lifting 25 ton Girders



Great Tunnelway
Derrick



Great Tunnelway



*Where Cumberland Extension Left
Main Line WM R.R. Big Pool*



New Track - Wagon Bridge



8' Concrete Arch



"Little Pool" C & O Canal



First Residency Eng Corps



Second Residency Eng Corps. no. 1



HT Carmichael
Res. Eng. 3rd Residency



Harris, Bennett & Tom
Masonry Inspectors



Camp H.T. Carmichael 3rd Residency
"Wabash Terrace"



Railroad Camp C-20 Canal



Rock Cut Dam No 6



Canal Work



Little Tonoloway - Site of 25' Arch



*Little Tonoloway Aqueduct
C&O Canal
Hancock Md.*



*Forms for 25' Concrete Arch - 15° skew
over Little Tondaway Creek*



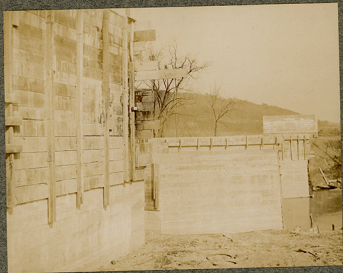
*25' Concrete Arch Forms
Little Tondaway*



Borrow Pit - 60000 cu Yds Fill Sta 490



Borrow Pit 490



Great Tonaloway Creek, Concrete
Masonry, Sta. 492



Tonaloway Girders in process
of erection



Cut Sta 620



Cut Sta 620 Showing Rock Slope



Cut Sta 620



Cut Sta 640



Chesapeake & Ohio Canal
B & O. R.R. - Potomac River
Dinky Line to Glass Sand Mines



Round Top Station B & O. R.R.



Round Top - Before Work



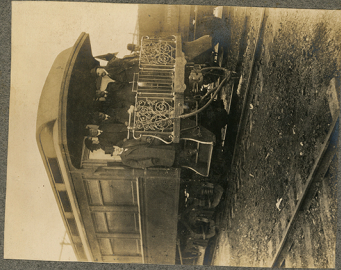
*Potomac River - C & O Canal
Round Top Cement Works*



Thanksgiving



Double 36" CIP Sta 392



Western Maryland Officials
1st Train to Cumberland



70' Cut Round Top
Sta 720



Round Top Cement Works



Clearing C. & O. Canal after heavy
Blasts - Round Top



Smith Mixer - Retaining Wall
Sta. 755



To cut Sta 720 Wasting
Top Lift



30000 cy Cut Sta. 590



25'-15" Skew Concrete Arch
Little Tanoloway Creek



6' Skew Arch Sta. 420



10' Concrete Arch Sta. 440



Coritococheague Bridge Williamsport, Md.
W.M. R.R.



15 Roadway Arch Near Clear Spring Md.
W.M. R.R.



Mike Elmore H.T. Carmichael
W.F.R.R.



Engineers 5th Division South & Western R.R.
Blue Ridge Mountains



15' Roadway Culvert Near Clear Spring Md.
W.M.R.R.



Filling Conococheague Trestle W.M.R.R.
Williamsport Md.



Borrow-pit Ft. Frederick Md. Gaton Shovel.
W.M.R.R.



Conococheague Bridge & Trestle W.M.R.R.



"WC"

"J.C."

Rlvey



On the Potomac - Hancock



Steam Shovel in Hancock.



The "Light House" Afterwards
Sold to W.M. For Depot Grounds



Ice Gorge on Potomac River
Hancock Md.



"Breaking up" - Potomac River
From Bridge Hancock



Potomac River



Potomac River - C. & O. Canal



C. & O. Canal in Winter



"The Basin" Hancock



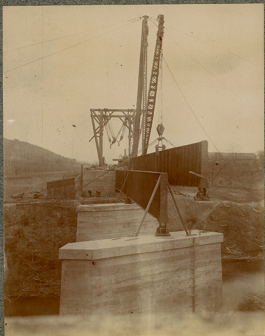
Taking Water Hancock



Temporary Station - Hancock



Tondolway Bridge



Tondolway Bridge Girder in Air



*Great Tonnolaway Aqueduct
C & O Canal*



Other side

EASTMAN KODAK COMPANY
ROCHESTER, N. Y.

