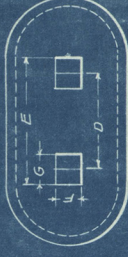


ATLANTIC AND BIRMINGHAM CONSTRUCTION CO.

DIAGRAMS
OF
STEEL BRIDGES

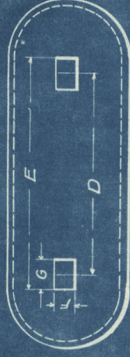
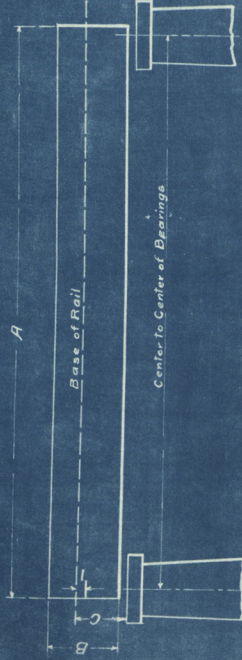
Nov. 16-1906

TRACING
FILE NO. H 31



—DECK PLATE GIRDERS.— —SINGLE TRACK.—

Span	A Length Out to Center of Bearings	B Back to Center of Bearings	C Back to Center of Bearings	D Length of Roll Masonry Center to Center of Girders	E Width of Roll Masonry Center to Center of Girders	F Length of Masonry Plates EXP. END FIXED END	G Width of Masonry Plates EXP. END FIXED END	H Number of Cross Frames	I Net Depth of the Bearing	J REMARKS	L Approximate Weight
13'-9"	15'-0"	2'-6"	3'-9"	6'-6"	8'-3"	12"	21"	2	7 1/2"	Sliding Expansion Bearing	3,800
18'-9"	20'-0"	2'-10"	4'-2"	6'-6"	8'-6"	16"	24"	2	7 1/2"	"	8,200
23'-6"	25'-0"	3'-5 1/2"	4'-9"	6'-6"	8'-6"	16"	24"	3	7 1/2"	"	12,500
28'-6"	30'-0"	4'-0 1/2"	5'-4"	6'-6"	8'-6"	16"	24"	3	7 1/2"	"	15,200
33'-6"	35'-0"	4'-3 1/2"	5'-8"	6'-6"	8'-7"	21"	25"	3	7 1/2"	"	19,700
38'-6"	40'-0"	4'-9 1/2"	6'-4"	6'-6"	8'-7"	21"	25"	4	7 1/2"	"	24,800
43'-9"	45'-0"	5'-6 1/2"	6'-11"	6'-6"	8'-7"	21"	25"	4	7 1/2"	"	28,600
48'-9"	50'-0"	5'-9 1/2"	7'-2"	6'-6"	8'-7"	21"	25"	4	7 1/2"	"	34,000
53'-0"	55'-0"	6'-0"	7'-6"	6'-6"	8'-11"	23"	29"	4	7 1/2"	"	40,700
58'-0"	60'-0"	6'-0 1/2"	7'-6"	6'-6"	8'-11"	23"	29"	4	7 1/2"	"	47,800
63'-0"	65'-0"	6'-6 1/2"	8'-0"	6'-6"	8'-11"	23"	29"	4	7 1/2"	"	53,800
68'-0"	70'-0"	6'-0 1/2"	8'-3"	7'-0"	9'-8"	25"	32"	4	9 1/2"	"	62,500
72'-9"	75'-0"	6'-6 1/2"	8'-3"	7'-0"	9'-8"	25"	32"	5	9 1/2"	"	70,400
77'-9"	80'-0"	7'-0 1/2"	8'-9"	7'-0"	9'-8"	25"	32"	5	9 1/2"	"	80,100
82'-9"	85'-0"	7'-6 1/2"	10'-0"	7'-6"	10'-6"	36"	36"	6	9 1/2"	Roller Expansion Bearing	98,900
87'-9"	90'-0"	7'-6 1/2"	10'-0"	7'-6"	10'-6"	36"	36"	6	9 1/2"	"	110,500
92'-9"	95'-0"	8'-3 1/2"	10'-9"	7'-6"	10'-6"	36"	36"	6	9 1/2"	"	119,800
97'-9"	100'-0"	8'-3 1/2"	10'-9"	7'-6"	10'-6"	36"	36"	6	9 1/2"	"	135,200
102'-9"	105'-0"	9'-0 1/2"	11'-6"	7'-6"	10'-6"	36"	36"	6	9 1/2"	"	153,300
107'-9"	110'-0"	9'-0 1/2"	11'-6"	7'-6"	10'-6"	36"	36"	6	9 1/2"	"	165,900
ROLLED STEEL PLATE BEARING ON MASONRY											
13'-9"	15'-0"	2'-6 1/2"	3'-3 1/2"	6'-6"	8'-0"	15"	18"	2	7 1/2"	Sliding Expansion Bearing	5,000
18'-9"	20'-0"	2'-10 1/2"	3'-7 1/2"	6'-6"	8'-1"	15"	19"	2	7 1/2"	"	7,600
23'-6"	25'-0"	3'-5 1/2"	4'-2 1/2"	6'-6"	8'-1"	18"	19"	3	7 1/2"	"	12,000
28'-6"	30'-0"	4'-0 1/2"	4'-9 1/2"	6'-6"	8'-3"	18"	21"	3	7 1/2"	"	14,700
33'-6"	35'-0"	4'-3 1/2"	5'-0 1/2"	6'-6"	8'-6"	18"	24"	3	7 1/2"	"	18,800
38'-6"	40'-0"	4'-9 1/2"	5'-6 1/2"	6'-6"	8'-7"	18"	25"	4	7 1/2"	"	23,500
43'-9"	45'-0"	5'-6 1/2"	6'-3 1/2"	6'-6"	8'-6"	21"	24"	4	7 1/2"	"	27,900
48'-9"	50'-0"	5'-9 1/2"	6'-6 1/2"	6'-6"	8'-7"	21"	25"	4	7 1/2"	"	33,900
53'-0"	55'-0"	6'-0"	6'-9 1/2"	6'-6"	8'-6"	24"	24"	4	7 1/2"	"	39,500
58'-0"	60'-0"	6'-0 1/2"	6'-9 1/2"	6'-6"	8'-7"	24"	25"	4	7 1/2"	"	46,600
63'-0"	65'-0"	6'-6 1/2"	7'-3 1/2"	6'-6"	8'-8"	24"	26"	4	7 1/2"	"	52,800
68'-0"	70'-0"	6'-6 1/2"	7'-5 1/2"	7'-0"	9'-4"	24"	28"	4	9 1/2"	"	61,800
72'-9"	75'-0"	6'-6 1/2"	7'-5 1/2"	7'-0"	9'-3"	27"	27"	5	9 1/2"	"	70,000
77'-9"	80'-0"	7'-0 1/2"	7'-11 1/2"	7'-0"	9'-4"	27"	28"	5	9 1/2"	"	79,800



— THROUGH PLATE GIRDERS —
— 10 FT. PANELS —
— SINGLE TRACK —

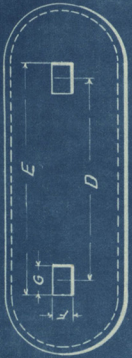
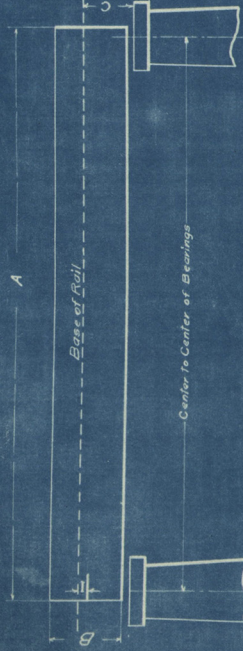
Span	A	B	C	D	E	F	G		H		I	J	K	L
							Back to Back	Base of Rail	Width of Masonry Plates	Length of Masonry Plates				
Length Center to Center of Beams	Length Out to Out of Girders	Back to Back Angles	Base of Rail Masonry	Width Center to Center of Girders	Width Out to Out of Masonry Plates	Length of Masonry Plates Exp. End. Fixed End.	Width of Masonry Plates Exp. End. Fixed End.	Partic. Center to Center Floor Beams Exp. End. Int.	Net Depth of Tr.	Width Center to Center of Stringers	Remarks	Approximate Weight		
27-9	30-3	4-0 1/2	3-2	13-9	15-6	12	21	21	10-0	10-0	7 1/2	6-6	Steel Siding Exp. Bearing 30'-0" to Out End Stringers	26,600
32-9	34-6	4-9 1/2	3-9	13-9	15-9	16	24	24	7-6	10-0	7 1/2	6-6	35'-0"	35,500
37-9	39-0	4-9 1/2	3-8	13-9	15-9	16	24	24	10-0	10-0	7 1/2	6-6	40-0	39,700
42-9	44-0	5-6 1/2	3-3	15-0	17-0	16	24	24	7-6	10-0	7 1/2	6-6	45-0	51,000
47-9	49-0	5-0 1/2	3-4	15-0	17-1	21	25	25	10-0	10-0	7 1/2	6-6	50-0	57,300
52-9	54-0	6-0 1/2	3-4	15-0	17-1	21	25	25	7-6	10-0	7 1/2	6-6	55-0	67,800
57-9	59-0	6-0 1/2	3-4	15-0	17-1	23	29	29	10-0	10-0	7 1/2	6-6	60-0	74,650
62-9	64-0	6-6 1/2	3-5	15-6	17-1 1/2	23	29	29	7-6	10-0	7 1/2	6-6	65-0	86,700
67-9	69-0	6-6 1/2	3-5	15-6	17-1 1/2	23	29	29	10-0	10-0	7 1/2	6-6	70-0	96,900
72-9	74-0	6-6 1/2	3-5	15-6	17-1 1/2	23	29	29	7-6	10-0	7 1/2	6-6	75-0	109,000
77-9	79-0	7-0 1/2	3-5	15-6	17-1 1/2	23	29	29	10-0	10-0	7 1/2	6-6	80-0	120,500
82-9	84-0	7-6 1/2	4-3	15-6	18-6	36	36	36	7-6	10-0	7 1/2	6-6	Roller Expansion Bearing 85'-0" to Out End Stringers	142,300
87-9	89-0	7-6 1/2	4-3	15-6	18-6	36	36	36	10-0	10-0	7 1/2	6-6	90-0	154,300
92-9	94-0	8-3 1/2	4-3	15-9	18-9	36	36	36	7-6	10-0	7 1/2	6-6	95-0	169,600
97-9	99-0	8-3 1/2	4-3	15-9	18-9	36	36	36	10-0	10-0	7 1/2	6-6	100-0	187,600
102-9	104-0	9-0 1/2	4-3	15-9	18-9	36	36	36	7-6	10-0	7 1/2	6-6	105-0	210,700
107-9	109-0	9-0 1/2	4-3	15-9	18-9	36	36	36	10-0	10-0	7 1/2	6-6	110-0	224,400

WITH END STRUTS

* WITH END FLOOR BEAMS

27-9	30-3	4-0 1/2	3-2	13-9	15-9	16	24	24	9-8 1/2	10-0	7 1/2	6-6	Steel Siding Exp. Bearing 30'-0" to Out End Stringers	28,800
32-9	34-6	4-9 1/2	3-3	13-9	15-9	21	25	25	7-2 1/2	10-0	7 1/2	6-6	35-0"	37,700
37-9	40-3	4-9 1/2	3-3	13-9	15-10	21	25	25	9-8 1/2	10-0	7 1/2	6-6	40-0	42,400
42-9	45-3	5-6 1/2	3-3	15-0	17-1	21	25	25	7-2 1/2	10-0	7 1/2	6-6	45-0	53,000
47-9	50-3	5-9 1/2	3-4	15-0	17-5	23	29	29	9-8 1/2	10-0	7 1/2	6-6	50-0	60,400
52-9	56-3	6-0 1/2	3-4	15-0	17-5	23	29	29	7-2 1/2	10-0	7 1/2	6-6	55-0	70,400
57-9	60-3	6-0 1/2	3-4	15-0	17-5	23	29	29	9-8 1/2	10-0	7 1/2	6-6	60-0	77,700
62-9	65-3	6-6 1/2	3-5	15-6	17-1 1/2	23	29	29	7-2 1/2	10-0	7 1/2	6-6	65-0	90,900
67-9	70-3	6-6 1/2	3-5	15-6	18-2	25	32	32	9-8 1/2	10-0	7 1/2	6-6	70-0	99,600
72-9	75-3	6-6 1/2	3-5	15-6	18-2	25	32	32	7-2 1/2	10-0	7 1/2	6-6	75-0	111,900
77-9	80-3	7-0 1/2	3-5	15-6	18-2	25	32	32	9-8 1/2	10-0	7 1/2	6-6	80-0	124,000
82-9	85-3	7-6 1/2	4-3	15-6	18-6	36	36	36	7-2 1/2	10-0	7 1/2	6-6	Roller Expansion Bearing 85'-0" to Out End Stringers	145,100
87-9	90-3	7-6 1/2	4-3	15-6	18-6	36	36	36	9-8 1/2	10-0	7 1/2	6-6	90-0	157,200
92-9	95-3	8-3 1/2	4-3	15-9	18-9	36	36	36	7-2 1/2	10-0	7 1/2	6-6	95-0	172,900
97-9	100-3	8-3 1/2	4-3	15-9	18-9	36	36	36	9-8 1/2	10-0	7 1/2	6-6	100-0	191,400
102-9	105-3	9-0 1/2	4-3	15-9	18-9	36	36	36	7-2 1/2	10-0	7 1/2	6-6	105-0	214,500
107-9	110-3	9-0 1/2	4-3	15-9	18-9	36	36	36	9-8 1/2	10-0	7 1/2	6-6	110-0	228,200

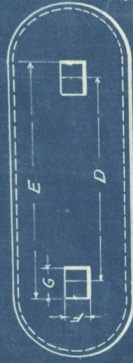
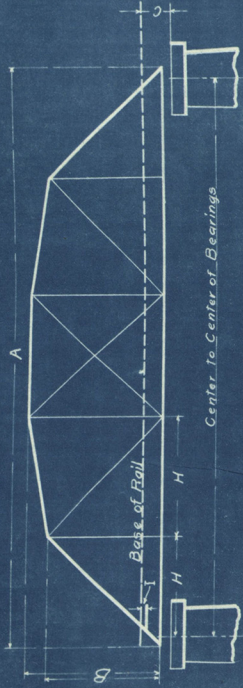
* Also round corner Girders with end floorbeams and end struts except end panels.



— THROUGH PLATE GIRDERS —
— 15 FT. PANELS —
— SINGLE TRACK —

Span Length Center to Center of Bearings	A Length Out to Out of Girders	B Back to Back of Angles	C Base of Rail to Masonry	D Width Center to Center of Girders	E Width Out to Out of Masonry Plates	F Length of Masonry Plates		G Width of Masonry Plates		H Panels Center to Center Floor Beams		I Net Depth of Tie	J Width Center to Center of Stringers	K REMARKS.	L Approximate Weight.
						Exp. End	Fixed End	Exp. End	Fixed End	End	Int.				
WITH END STRUTS															
28'-3"	30'-0"	4'-3 1/2"	3'-11 1/2"	12'-6"	14'-1"	21"	21"	19"	19"	15'-0"	15'-0"	7 1/2"	6'-6"	Raised Masonry Plates, Shoring Expansion Bearing.	25,700
33'-3"	35'-0"	4'-3 1/2"	3'-11 1/2"	12'-6"	14'-1"	21"	21"	19"	19"	10'-0"	15'-0"	7 1/2"	6'-6"		31,500
38'-3"	40'-0"	4'-9 1/2"	3'-11 1/2"	12'-6"	14'-1"	21"	21"	19"	19"	12'-6"	15'-0"	7 1/2"	6'-6"		37,400
43'-3"	45'-0"	5'-6 1/2"	4'-0"	15'-0"	16'-7"	21"	21"	19"	19"	15'-0"	15'-0"	7 1/2"	6'-6"		44,400
48'-3"	50'-0"	5'-9 1/2"	4'-0"	15'-0"	16'-8"	21"	21"	20"	20"	10'-0"	15'-0"	7 1/2"	6'-6"		54,600
53'-0"	55'-0"	6'-0 1/2"	4'-0"	15'-0"	16'-7"	24"	24"	19"	19"	12'-6"	15'-0"	7 1/2"	6'-6"		62,000
58'-0"	60'-0"	6'-0 1/2"	4'-0"	15'-0"	16'-7"	24"	24"	22"	22"	10'-0"	15'-0"	7 1/2"	6'-6"		68,600
63'-0"	65'-0"	6'-6 1/2"	4'-0"	15'-0"	16'-10"	24"	24"	22"	22"	12'-6"	15'-0"	7 1/2"	6'-6"		79,900
68'-0"	70'-0"	6'-6 1/2"	4'-0"	15'-0"	17'-0"	27"	27"	24"	24"	15'-0"	15'-0"	7 1/2"	6'-6"		88,700
73'-0"	75'-0"	6'-6 1/2"	4'-0"	15'-0"	17'-0"	27"	27"	24"	24"	10'-0"	15'-0"	7 1/2"	6'-6"		96,700
77'-9"	80'-0"	7'-0 1/2"	4'-0"	15'-6 3/8"	17'-6"	27"	27"	24"	24"	10'-0"	15'-0"	7 1/2"	6'-6"		113,100
82'-9"	84'-0"	7'-6 1/2"	5'-6 3/8"	15'-6 3/8"	18'-0 1/2"	36"	29"	30 1/2"	30 1/2"	12'-6"	15'-0"	7 1/2"	6'-6"	8' 1/2" Exp. Masonry Bearing 8' 1/2" Int. Masonry Bearing	132,600
87'-9"	89'-0"	7'-6 1/2"	5'-6 3/8"	15'-6"	18'-6"	36"	36"	36"	36"	15'-0"	15'-0"	7 1/2"	6'-6"	9' 0"	146,400
92'-9"	94'-0"	8'-3 1/2"	5'-6 3/8"	15'-6"	18'-6"	36"	36"	36"	36"	10'-0"	15'-0"	7 1/2"	6'-6"		162,900
97'-9"	99'-0"	8'-3 1/2"	5'-6 3/8"	15'-6"	18'-9"	36"	36"	36"	36"	12'-6"	15'-0"	7 1/2"	6'-6"	10' 0"	179,900
102'-9"	104'-0"	9'-0 1/2"	5'-6 3/8"	15'-9"	18'-9"	36"	36"	36"	36"	15'-0"	15'-0"	7 1/2"	6'-6"	10' 6"	195,100
* WITH END FLOOR BEAMS															
28'-3"	30'-0"	4'-3 1/2"	3'-11 1/2"	12'-6"	14'-1"	21"	21"	19"	19"	14'-8"	0'-0"	7 1/2"	6'-6"	Galvanized Masonry Plates Shoring, Expansion Bearing	26,600
33'-3"	35'-0"	4'-3 1/2"	3'-11 1/2"	12'-6"	14'-3"	21"	21"	21"	21"	9'-8"	15'-0"	7 1/2"	6'-6"		32,400
38'-3"	40'-0"	4'-9 1/2"	3'-11 1/2"	12'-6"	14'-5"	21"	21"	23"	23"	12'-2"	15'-0"	7 1/2"	6'-6"		38,300
43'-3"	45'-0"	5'-6 1/2"	4'-0"	15'-0"	17'-0"	21"	21"	24"	24"	14'-8"	15'-0"	7 1/2"	6'-6"		46,300
48'-3"	50'-0"	5'-9 1/2"	4'-0"	15'-0"	17'-1"	21"	21"	25"	25"	9'-8"	15'-0"	7 1/2"	6'-6"		56,000
53'-0"	55'-0"	6'-0 1/2"	4'-0"	15'-0"	17'-1"	24"	24"	24"	24"	12'-2"	15'-0"	7 1/2"	6'-6"		63,600
58'-0"	60'-0"	6'-0 1/2"	4'-0"	15'-0"	17'-1"	24"	24"	26"	26"	14'-8"	15'-0"	7 1/2"	6'-6"		70,700
63'-0"	65'-0"	6'-6 1/2"	4'-0"	15'-0"	17'-2"	24"	24"	26"	26"	9'-8"	15'-0"	7 1/2"	6'-6"		81,400
68'-0"	70'-0"	6'-6 1/2"	4'-0"	15'-0"	17'-4"	24"	24"	28"	28"	12'-2"	15'-0"	7 1/2"	6'-6"		90,700
73'-0"	75'-0"	7'-0 1/2"	4'-0"	15'-0"	17'-5"	27"	27"	27"	27"	14'-8"	15'-0"	7 1/2"	6'-6"		99,300
77'-9"	80'-0"	7'-0 1/2"	4'-0"	15'-6"	17'-10"	27"	27"	28"	28"	9'-8"	15'-0"	7 1/2"	6'-6"		115,500
82'-9"	84'-0"	7'-6 1/2"	5'-6 3/8"	15'-6 3/8"	18'-6"	36"	36"	36"	36"	12'-2"	15'-0"	7 1/2"	6'-6"	Roller Expansion Bearing 8' 1/2" Exp. End Stringers	135,200
87'-9"	90'-0"	7'-6 1/2"	5'-6 3/8"	15'-6"	18'-6"	36"	36"	36"	36"	14'-8"	15'-0"	7 1/2"	6'-6"	9' 0"	149,300
92'-9"	95'-0"	8'-3 1/2"	5'-6 3/8"	15'-6"	18'-6"	36"	36"	36"	36"	9'-8"	15'-0"	7 1/2"	6'-6"		164,200
97'-9"	100'-0"	8'-3 1/2"	5'-6 3/8"	15'-9"	18'-9"	36"	36"	36"	36"	12'-2"	15'-0"	7 1/2"	6'-6"		182,500
102'-9"	105'-0"	9'-0 1/2"	5'-6 3/8"	15'-9"	18'-9"	36"	36"	36"	36"	14'-8"	15'-0"	7 1/2"	6'-6"		198,500

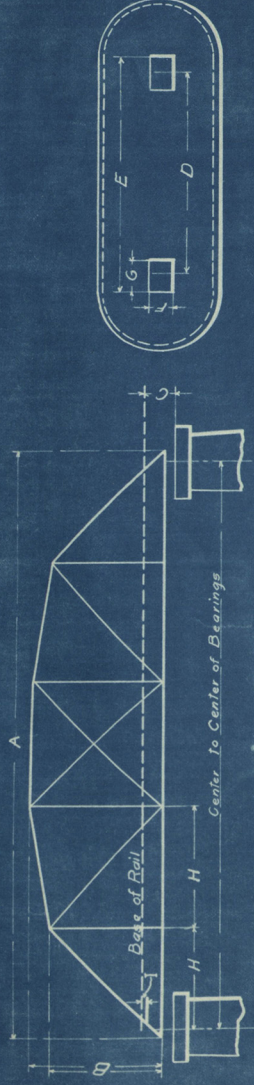
* Also round corner Girders with end floor-beams and end struts except end panels.



RIVETED & PIN CONNECTED THROUGH TRUSSES

— SINGLE TRACK —

Span Length Center to Center of Bearings	A	B	C	D	E	F		G		H		I	J	K	L
						Exp. End	Fixed End	Exp. End	Fixed End	End	Int.				
Riveted With End Struts															
100'-0"	101'-11"	27'-3"	5'-11"	15'-10"	19'-4 1/2"	23"	3'-6 1/2"	2'-6"	25'-0"	25'-0"	25'-0"	7 1/2"	6'-6"		138,600
125'-0"	127'-2"	27'-3"	6'-2"	15'-11"	18'-7 1/2"	26"	3'-8"	2'-8"	25'-0"	25'-0"	25'-0"	7 1/2"	6'-6"		196,300
160'-0"	161'-11"	27'-3"	6'-2"	15'-9"	19'-3 3/4"	23"	3'-6 1/2"	2'-6"	25'-0"	25'-0"	25'-0"	7 1/2"	6'-6"	ALTERNATE DESIGN	137,000
125'-0"	127'-2"	27'-3"	6'-5"	15'-10"	18'-8"	26"	3'-8"	2'-8"	25'-0"	25'-0"	25'-0"	7 1/2"	6'-6"	Bottom Chords Composed of Angles	195,300
Riveted With End Floor Beams															
100'-0"	101'-11"	27'-3"	5'-11"	15'-10"	19'-4 1/2"	23"	4'-8"	3'-11 1/2"	25'-0"	25'-0"	25'-0"	7 1/2"	6'-6"	Center Line Masonry Plates, Rollers And Fixed End Not Center Line Truss	144,900
125'-0"	127'-2"	27'-3"	6'-2"	15'-11"	18'-5 3/4"	26"	4'-4 1/2"	3'-10"	25'-0"	25'-0"	25'-0"	7 1/2"	6'-6"		202,600
160'-0"	161'-11"	27'-3"	6'-2"	15'-9"	19'-3 3/4"	23"	4'-8"	3'-11 1/2"	25'-0"	25'-0"	25'-0"	7 1/2"	6'-6"	Alternate Design	143,300
125'-0"	127'-2"	27'-3"	6'-5"	15'-10"	18'-8"	26"	4'-3 1/2"	3'-10"	25'-0"	25'-0"	25'-0"	7 1/2"	6'-6"	Bottom Chords Composed of Angles	201,600
Pin Connected With End Struts															
150'-0"	152'-3"	28'-0"	5'-6"	16'-2"	20'-2 1/2"	23"	2'-3"	4'-0"	25'-0"	25'-0"	25'-0"	7 1/2"	6'-6"		264,600
175'-0"	177'-7"	28'-0"	5'-6"	16'-2"	20'-3 1/2"	23"	2'-7"	4'-3 1/2"	25'-0"	25'-0"	25'-0"	7 1/2"	6'-6"		338,100
200'-0"	202'-11"	28'-0"	5'-6"	16'-2"	20'-7 1/2"	23"	2'-11"	4'-2"	25'-0"	25'-0"	25'-0"	7 1/2"	6'-6"		426,300
Pin Connected With End Floor Beams															
150'-0"	152'-3"	28'-0"	5'-6"	16'-2"	20'-2 1/2"	23"	2'-3"	4'-0"	25'-0"	25'-0"	25'-0"	7 1/2"	6'-6"	Center Line Masonry Plates, Rollers And Fixed End Not Center Line Truss	270,900
175'-0"	177'-7"	28'-0"	5'-6"	16'-2"	20'-3 1/2"	23"	2'-7"	4'-5 1/2"	25'-0"	25'-0"	25'-0"	7 1/2"	6'-6"		344,400
200'-0"	202'-11"	28'-0"	5'-6"	16'-2"	20'-7 1/2"	23"	2'-11"	4'-5 1/2"	25'-0"	25'-0"	25'-0"	7 1/2"	6'-6"		433,600

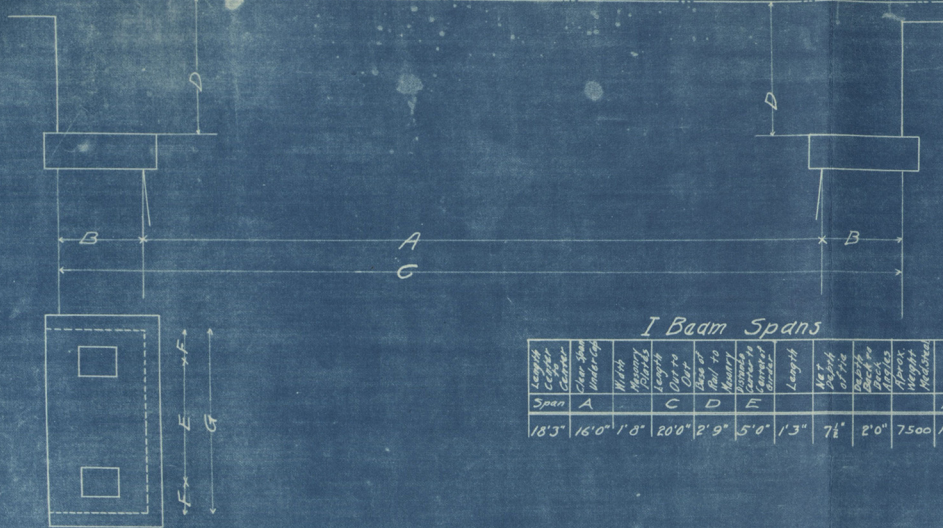


RIVETED & PIN CONNECTED THROUGH TRUSSES

— DOUBLE TRACK —

Span Length Center to Center of Bearings	A	B	Center to Center of Chords or Pins	End Center	Base of Rail		C	D	E	F		G		H	I	J	K	L	
					Length Out to Out of Trusses	Length of Masonry Plates				Exp. End	Fixed End	Exp. End	Fixed End						Center to Center of Panels and Floor Beams
Riveted																			
With End Struts.																			
100'-0"	103'-0"	31'-0"	31'-0"	31'-0"	5'-9"	29'-1"	33'-9"	3'-0"	3'-0"	4'-3"	3'-6"	25'-0"	25'-0"	7 1/2"	6'-6"	6'-6"		274,000	
125'-0"	128'-4"	31'-0"	31'-0"	31'-0"	5'-0"	28'-4"	33'-0"	3'-4"	3'-4"	4'-6"	3'-8"	25'-0"	25'-0"	7 1/2"	6'-6"	6'-6"		394,800	
Riveted																			
With End Floor Beams																			
100'-0"	103'-0"	31'-0"	31'-0"	31'-0"	8'-9"	29'-1"	33'-10"	3'-0"	3'-0"	4'-5"	4'-5"	25'-0"	25'-0"	7 1/2"	6'-6"	6'-6"		288,700	
125'-0"	128'-4"	31'-0"	31'-0"	31'-0"	9'-0"	29'-4"	33'-4"	3'-4"	3'-4"	5'-1"	5'-1"	25'-0"	25'-0"	7 1/2"	6'-6"	6'-6"	Center Line Masonry Plates Rolled and Fixed Ends for Center Line Trusses	409,500	
Pin Connected																			
With End Struts																			
150'-0"	154'-0"	33'-0"	33'-0"	33'-0"	8'-2"	29'-8"	34'-10"	4'-0"	4'-0"	4'-5"	4'-2"	25'-0"	25'-0"	7 1/2"	6'-6"	6'-6"		528,100	
175'-0"	178'-9"	33'-0"	33'-0"	33'-0"	8'-4"	29'-8"	34'-9"	3'-9"	3'-9"	5'-1"	4'-5"	25'-0"	25'-0"	7 1/2"	6'-6"	6'-6"		674,100	
200'-0"	204 1/2"	33'-0"	33'-0"	33'-0"	8'-7"	29'-8"	34'-8"	4'-2"	4'-2"	5'-3"	4'-6"	25'-0"	25'-0"	7 1/2"	6'-6"	6'-6"		846,300	
Pin Connected																			
With End Floor Beams																			
150'-0"	154'-0"	33'-0"	33'-0"	33'-0"	8'-2"	29'-8"	34'-2"	4'-0"	4'-0"	4'-0"	4'-0"	25'-0"	25'-0"	7 1/2"	6'-6"	6'-6"		545,000	
175'-0"	178'-9"	33'-0"	33'-0"	33'-0"	8'-4"	29'-8"	34'-1"	3'-9"	3'-9"	5'-1"	4'-5"	25'-0"	25'-0"	7 1/2"	6'-6"	6'-6"	Center Line Masonry Plates Rolled and Fixed Ends for Center Line Trusses	693,000	
200'-0"	204 1/2"	33'-0"	33'-0"	33'-0"	8'-7"	29'-8"	34'-2"	4'-2"	4'-2"	5'-10 1/2"	5'-4"	25'-0"	25'-0"	7 1/2"	6'-6"	6'-6"		865,200	

Base of Rail



FROM DATA FURNISHED by AMERICAN BRIDGE CO.

I Beam Spans

Span	A	C	D	E	Length	Net Weight of I-beam	Depth of I-beam	Clearance to Deck	Clearance to Top of Rail	Remarks
18'3"	16'0"	1'8"	20'0"	2'9"	5'0"	1'3"	7 1/2"	2'0"	7500	Rolled Steel Plates

Deck Plate Girders

Span	A	C	D	E	Length	Net Weight of Deck	Depth of Deck	Clearance to Deck	Clearance to Top of Rail	Remarks
28'6"	26'2"	2'0"	3'0"	5'4"	6'6"	1'4"	7 1/2"	4'0"	12500	Rolled Steel Plates
38'6"	35'9"	2'0"	4'0"	6'2"	6'6"	1'9"	7 1/2"	4'9"	23500	
48'3"	45'6"	2'1"	5'0"	6'6 1/2"	6'6"	1'9"	7 1/2"	5'9"	32000	
58'0"	55'0"	2'1"	6'0"	6'9 1/2"	6'6"	2'0"	7 1/2"	6'0"	44500	
68'0"	65'0"	2'4"	7'0"	7'5 1/2"	7'0"	2'0"	9 1/2"	6'6 1/2"	59000	
77'9"	74'6"	2'4"	8'0"	7'11 1/2"	7'6"	2'3"	9 1/2"	7'0"	76000	
87'9"	85'6"	3'0"	9'0"	10'0"	7'6"	3'0"	9 1/2"	7'6 1/2"	105500	Cast Steel Rollers with Cast Steel Ped.
97'3"	93'0"	3'0"	10'0"	10'9"	7'6"	3'0"	9 1/2"	8'3 1/2"	129000	
107'3"	103'0"	3'0"	11'0"	11'6"	7'6"	3'0"	9 1/2"	9'0 1/2"	158000	

Riveted & Pin Spans-Thru Truss

Span	A	C	D	E	Length	Net Weight of Truss	Remarks
100'	97'0"	3'6"	102'0"	5'11"	15'10"	2'0"	132000
125'	121'9"	3'8"	127'2"	6'2"	15'11"	2'2"	187000
130'	126'6"	4'0"	132'3"	5'6"	16'0"	2'3"	200000
140'	136'6"	4'0"	141'3"	5'6"	16'2"	2'3"	230000
150'	147'6"	4'0"	152'3"	5'6"	16'2"	2'3"	252400
160'	158'0"	4'3"	162'6"	5'4"	16'2"	2'6"	270000
170'	168'0"	4'3"	172'7"	5'6"	16'2"	2'7"	315000
180'	175'6"	4'3"	183'0"	5'6"	16'2"	3'0"	337000
190'	185'6"	4'3"	193'0"	5'6"	16'2"	3'0"	385000
200'	195'6"	4'3"	203'0"	5'6"	16'2"	3'0"	406000
220'	215'6"	4'3"	223'0"	5'9"	16'3"	3'0"	471000
250'	245'0"	4'3"	253'3"	6'0"	16'4"	3'3"	493000
280'	275'0"	4'3"	283'3"	6'3"	16'5"	3'3"	728000
300'	294'6"	4'6"	303'6"	6'6"	16'6"	3'6"	819000

Through Plate Girders

Span	A	C	D	E	Length	Net Weight of Girder	Depth of Girder	Clearance to Deck	Clearance to Top of Rail	Remarks
28'3"	25'6"	1'7"	30'	3'11 1/2"	12'6"	1'9"	7 1/2"	4'3"	25000	
38'3"	35'6"	1'7"	40'	3'11 1/2"	12'6"	1'9"	7 1/2"	4'9"	37000	
48'3"	45'6"	1'8"	50'	4'0"	15'0"	1'9"	7 1/2"	5'9"	54000	
58'0"	55'0"	1'7"	60'	4'0"	15'0"	2'0"	7 1/2"	6'0"	70000	
68'0"	65'0"	1'10"	70'	4'0"	15'0"	2'0"	7 1/2"	6'6"	91000	
77'9"	74'9"	2'0"	80'	4'0"	15'6"	2'0"	7 1/2"	7'0"	114000	
87'9"	83'6"	3'0"	90'	5'6 1/2"	15'6"	3'0"	7 1/2"	7'6"	146000	
97'9"	93'6"	3'0"	100'	5'6 1/2"	15'9"	3'0"	8 1/2"	8'3"	177000	
107'9"	103'6"	3'0"	110'	5'6 1/2"	15'9"	3'0"	9'0"	9'0"	212000	

Deck Pin Spans

Span	A	C	D	E	G	Length	Net Weight of Deck	Depth of Deck	Clearance to Deck	Clearance to Top of Rail	Remarks
150'	146'0"	3'4"	152'9"	2'8'3"	14'0"	7 1/2"	2'9"	6'6"	275000	panels	
160'	155'9"	3'6"	163'0"	2'9'6"	14'0"	7 1/2"	3'0"	6'6"	305000		
170'	165'9"	3'6"	173'0"	3'1'6"	14'0"	7 1/2"	3'0"	6'6"	340000		
180'	175'3"	3'9"	183'3"	3'3'6"	14'0"	7 1/2"	3'3"	6'6"	370000		
190'	185'3"	3'9"	193'3"	3'5'9"	15'0"	7 1/2"	3'3"	6'6"	420000		
200'	195'0"	3'9"	203'6"	3'8'0"	15'0"	7 1/2"	3'6"	6'6"	440000		
220'	215'0"	4'0"	223'6"	3'9'0"	15'0"	7 1/2"	3'6"	6'6"	570000	panels & 16 sub panels	
250'	244'9"	4'8"	253'9"	4'1'0"	16'0"	7 1/2"	3'9"	6'6"	635000		
280'	274'9"	4'3"	283'9"	4'5'6"	16'0"	7 1/2"	3'9"	6'6"	780000		
300'	294'6"	4'6"	304'0"	4'5'6"	16'0"	7 1/2"	4'0"	6'6"	875000		

Deck Lattice & Pin Spans

Span	A	C	D	E	Length	Net Weight of Lattice	Depth of Lattice	Clearance to Deck	Clearance to Top of Rail	Remarks
125'	96'6"	2'9"	102'6"	2'3'3"	13'0"	7 1/2"	2'6"	6'6"	150000	
125'	121'6"	3'0"	127'6"	2'5'3"	14'0"	7 1/2"	2'6"	6'6"	210000	
130'	126'0"	3'4"	132'9"	2'6'3"	14'0"	7 1/2"	2'9"	6'6"	240000	
140'	136'0"	3'4"	142'9"	2'7'3"	14'0"	7 1/2"	2'9"	6'6"	255000	

Assumed Live Load



