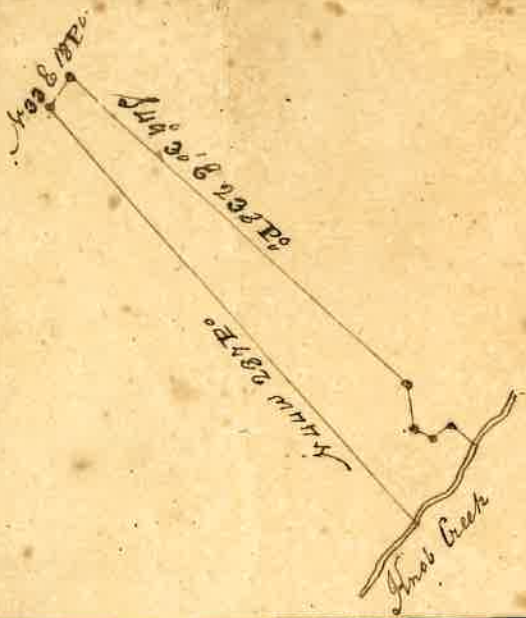


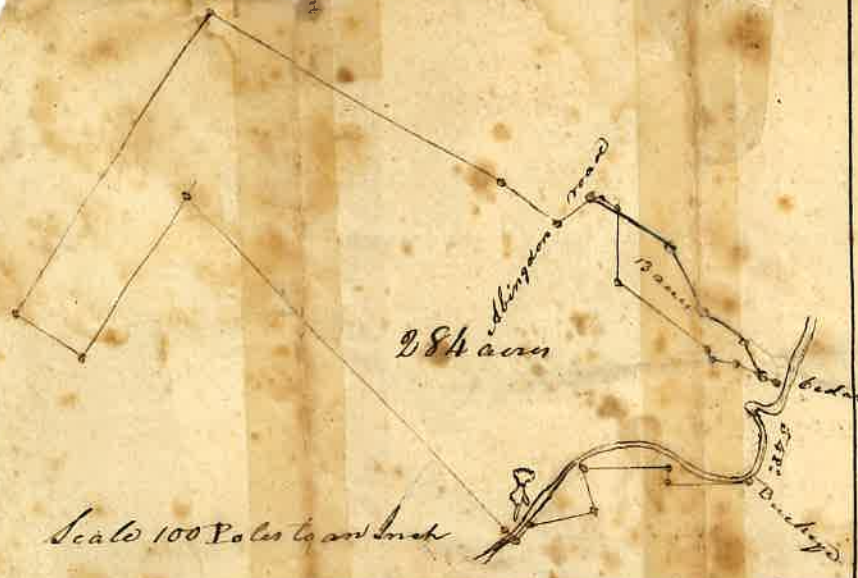


This Map is the form of a Tract of  
Land Surveyed for Joseph Hammer  
December 22<sup>d</sup> 1794. Beginning at two  
Red Oak and a white Oak near the  
Wagon Road the South fifty five  
Poles



Draught of Sixty acres of  
 Land Surveyed September  
 5<sup>th</sup> 1801, Beginning at a Stake  
 on the Bank of Knob Creek  
 then on John Hammers line  
 North forty four west two  
 Hundred and ~~seventy~~ eighty  
 seven poles to two small  
 Hickorys on the Indian Ridge

then North thirty three East Eighteen poles to two  
 white Oaks then South forty nine degrees and thirty  
 minutes East two Hundred and thirty eight poles to  
 post Oak then south Ele East twenty four poles to  
 the Middle of a Spring then down said Spring  
 with Meanders of Knob Creek south Easterly course  
 cedar Stake ~~to~~ eight degrees  
 poles to a ~~center~~ the center  
 back Oaks then ~~to~~ Degrees &  
 minute East Eighteen poles to cedar Stake and  
 small ash on the bank of Knob Creek then up  
 creek as it Meanders to the Beginning



By virtue of an Entry made in  
 the Entry Takers office of Washington  
 County State of Tennessee of A.  
 dated the day of  
 I have surveyed ~~two~~ hundred  
 and Eighty four acres of land  
 for John Bowman in the County  
 and State aforesaid on Knob  
 Creek, Beginning at a stake

on the north bank of said creek thence with the line of William G. Loony and the  
 heirs of Jonathan Hammer North forty three West two hundred and forty four poles  
 to a cedar stake and pointers then South thirty four West one hundred and  
 three to a Spanish oak then North fifty six West forty two poles to a double chestnut  
 on the top of the Indian ridge then North thirty three East one hundred and  
 ninety poles to a planted stone and three white oak pointers Jacob Hammers  
 corner then with his line South sixty one and one hundred and seventy nine poles  
 to a white oak in a land James Whites corner thence with an agreed boundary  
 between said White and said Bowman the following courses and distances South  
 fifty five East thirty seven poles to a white oak at the side of the wagon road thence  
 crossing the said road North fifty five East twenty two poles to a black oak at  
 the side of said road then East two and a half poles to a stake then South fifty  
 six East ten and a half poles to a locust stake and pointers then South thirty  
 eight poles to a stake in a field then South fifty two East sixty poles to two white  
 oaks then South twenty five East three poles to a stake and pointers then South  
 Eighty seven East Eleven poles to a pine then South sixty five East twenty  
 three poles to a small cedar and maples on the north bank of Knob creek  
 said White and Bomans corner, then up said creek as it meanders and crossing  
 fifty four poles to a Buckeye dogwood and maple William Whites corner then with  
 his line West forty four poles to a hickory North six poles to a dogwood West  
 forty six poles to a stake then South eighteen East twenty four poles  
 to two small poplars where a hickory stood then South seventy eight West  
 thirty poles to a white oak thence South twenty eight West ten poles to a  
 stake and marked white oak on William G. Loony's line then with his line  
 crossing Knob creek North forty three West six poles to the Beginning -

Surveyed the 26<sup>th</sup> of May 1836, By Nathan Shipley S.W.C.

John Boman

284 ans E.

3



Surveyed for the Heirs of Isaac Hammer 280 acres of land  
 in Washington County on both sides of Rock Creek Beginning at  
 a stake on the North side of the creek thence North  $44^{\circ}$  West  
 $249\frac{1}{2}$  poles to a stake in lieu of a stake and dogwood called for  
 in the Deed thence S  $33^{\circ}$  W. 93 poles to a Spanish oak thence  
 N  $50^{\circ}$  W.  $44\frac{1}{2}$  poles to a double Chestnut N  $33^{\circ}$  E. 182 poles to a  
 stake & painters Jacob Hammers corner thence S  $60^{\circ}$  E. 169 poles  
 to a stake on James Whites line thence South thirteen and a  
 half poles to a stake in a field thence East 50 poles to  
 black oak at the Road thence S  $56^{\circ}$  E. sixteen and a half poles  
 to a stake thence South 36 poles to a stake in a field thence  
 S  $52^{\circ}$  E. 94 to a stake at Rock Creek thence up the Meander  
 of the creek 45 poles to a Buck Eye and dogwood on the South  
 Bank of the creek in lieu of a Buck Eye and cucumber called  
 for in the Grant a corner of Hammers  $9\frac{1}{2}$  were surveyed thence  
 with the lines of the same West 43 poles to a Hickory and  
 white oak fallen down on the side of a Rock thence North  
 6 poles to a white oak thence West 49 poles to a white  
 oak thence S  $18^{\circ}$  E. 21 poles to a stake in lieu of a stake  
 Hickory called for in the Grant thence S  $78^{\circ}$  W. 30 poles to a  
 white oak sapling thence S  $30^{\circ}$  W. 18 poles to a white oak thence  
 S  $18^{\circ}$  E. 6 poles to a small pine thence N  $44^{\circ}$  W. 19 poles crossing  
 the creek to the Beginning. Surveyed February 11<sup>th</sup> 1836

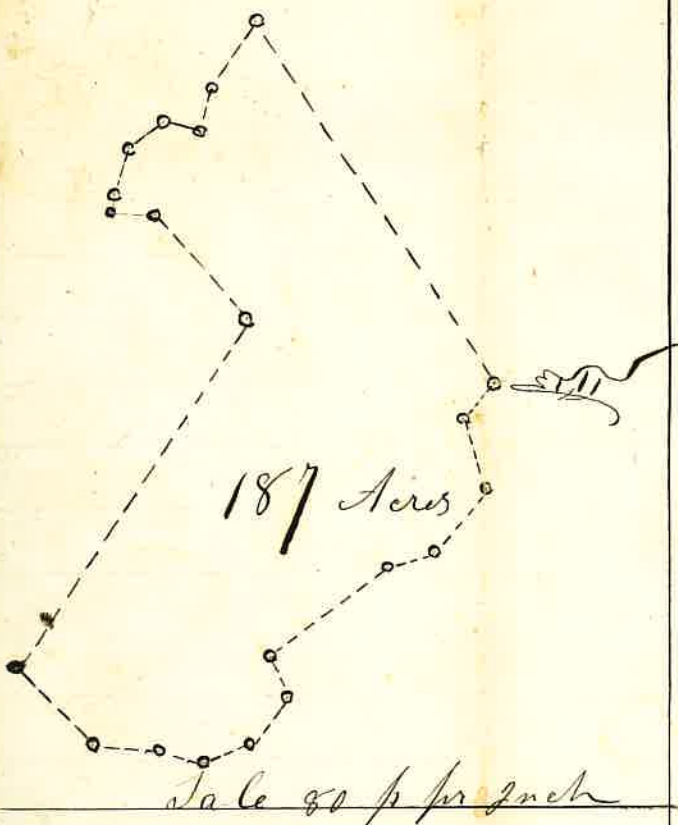
By Matthew Stephenson D<sup>s</sup>

Wills of Isaac Hammer

Plat for 280 acres

W

W



The above Platt Represents  
 The Isaac Bogart Tract of  
 Land Lying on the South  
 Side of Holy Churches River  
 Bounded as follows to wit  
 Beginning at a Stake Near the  
 Big Road at Big Indian Creek  
 at the Corner of John &  
 Charles Langmires thence  
 with the original Bed of  
 D Creek to its Mouth the  
 following S 43 W 18 poles

then S 15 E 31 p to a Stake Syamore and pine painter  
 then S 40 W 34 p 2 Sweet Gum painter then  
 S 73 W 23 p to then S 52 W 60 p to a Syamore  
 & Sweet Gum painter S 23 E 19 p to a Stake  
 S 42 W 26 p to a Cedar Near the Sluce then  
 with D Sluce and Creek S 70 W 20 p  
 N 74 W 18 N 77 W 28 to an Original  
 Lym at the Mouth of D Sluce on the East  
 Side of the same then N 43 W 48 p to a  
 Black walnut on the foot of the Buffallow  
 Mt then N 35 E 176 p to a Chestnut Sprout  
 Corner to Wm Garland then N 41 W 57 p to  
 a Dogwood N 84 W 20 to a whit oak & poplar  
 then N 10 E 7 p to a Poplar N 20 E 20 p to a whit oak  
 then N 55 E 17 p to a Hickory S 80 E 14 p to a  
 a Chestnut oak N 35 E 34 p to a Whit oak Corner  
 to S E Erwin thence with his Line to  
 S 34 1/2 E 184 p to the Beginning containing one  
 hundred and Eighty Seven Acres Surveyed Aug 27<sup>th</sup>

1862 By J H Tucker  
 C C John Langmires  
 G W Hunt

Faint handwritten text, likely bleed-through from the reverse side of the page.



Faint handwritten text, likely bleed-through from the reverse side of the page.

Platt for  
Joseph Bauman  
Eqs  
— — 187 Acres

Faint handwritten text on the left side of the bottom section, possibly bleed-through.

Faint handwritten text in the middle section, possibly bleed-through.

Faint handwritten text on the right side of the bottom section, possibly bleed-through.