

Barner Learning Landscape

Development and Management Plan



Bridget Grim

Fall 2017

Biology 195: Environmental Studies
at the Barner Learning Landscape

Overview

The Barner Learning Landscape provides roughly two acres of outdoor learning space on the Olympic College campus. Formerly owned by the Barners, an influential Bremerton family, the property serves as a cultural connection to the community's past, as well as a space to learn about our changing environment.

Objectives

Objectives for the development and use of the Learning Landscape are twofold:

1. **Education:** Act as an interdisciplinary outdoor learning space, providing educational opportunities for Olympic College students and the surrounding community.
2. **Community Engagement:** Provide a tangible connection to community history and raise environmental awareness, demonstrating Olympic College's role as a leader in sustainability.

Connection to OC Mission, Vision, and Values

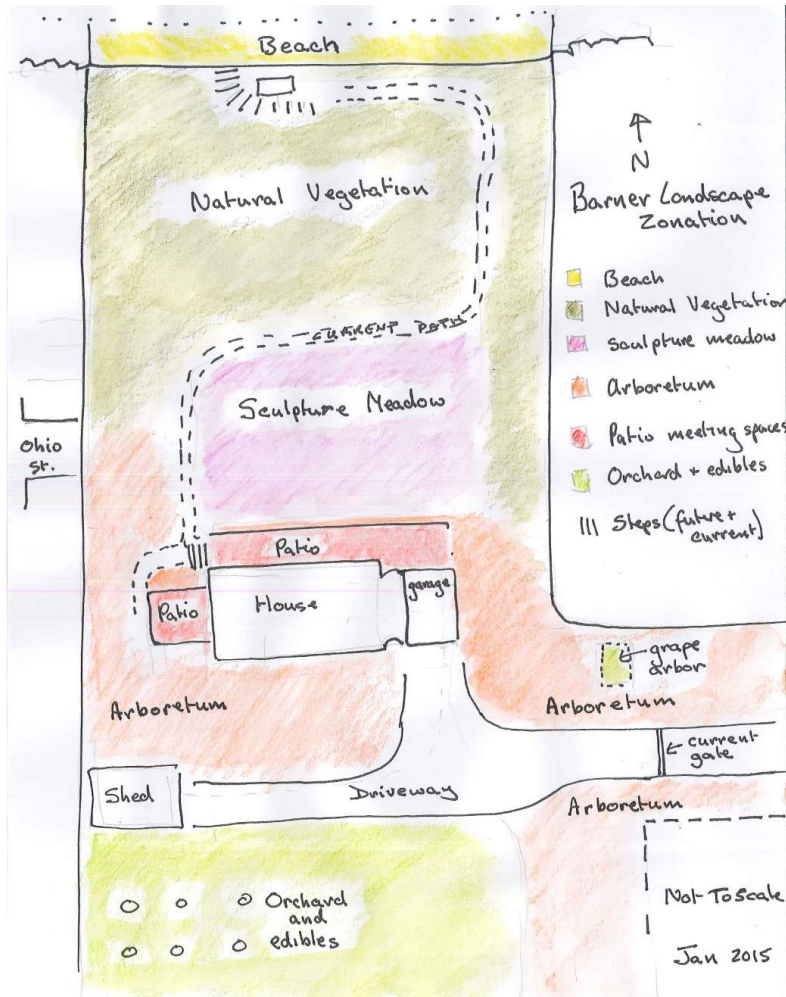
Opportunities provided by the Barner Learning Landscape uphold and the mission, vision, and values of Olympic College by:

- Providing access to quality educational opportunities.
- Integrating adaptive and innovative teaching methods.
- Development of strong community partnerships, fulfilling our role as a cultural center.
- Contributing to the wellbeing and sustainability of our community.
- Providing opportunities for faculty, staff, and students to serve as stewards of our environment.

BLL Zones

- Raised Bed Garden
- Orchard
- Ornamental Tree/Shrub Path
- Sculpture Garden
- Native Plant Area

- Meditation Garden
- Shoreline/Riparian Zone
- House/Restrooms (history center/covered classroom area)
- Event Area(s) (amphitheater, possible limited use rental space in house)



Similar Sites

Similar outdoor learning environments have enriched educational opportunities at other local institutions. Some examples include:

- South Seattle College Arboretum
<http://www.southseattle.edu/arboretum/>
- Wenatchee Valley College: Wells House
<http://www.wenatcheevalleymuseum.org/wells-house/>

- Bloedel Reserve
<http://bloedelreserve.org>

Education

Uses Within Olympic College

Promote the ongoing use of the Barner Learning Landscape in each of the following areas.
Establish OC faculty, staff, and/or student lead for each program.

ACADEMIC DISCIPLINE	FACULTY/STAFF	STUDENT
Anthropology: Cultural ecology, ethnoecology, student project development	Caroline Hartse	
Agricultural Education (proposed)	Chris Plemmons (possible)	
Barner Service Learning Class (proposed)	Amy Lawrence	
Art and Performance: Sculpture garden, performance space, land art, plein-air drawing and painting	Marie Weichman Tim Hagan (possible)	
Culinary Arts: Culinary garden, sustainable food practices	Chris Plemmons	
Digital Filmmaking: Shoot location for film projects, documentaries	Tim Hagan (possible)	
Early Childhood Education: Touchable garden for children	Gayle Dilling (possible)	
Earth Sciences: Plant identification/botany, soil characterization, service learning/invasive plant removal	Amy Lawrence	
English/Creative Writing: Environmental writing and research, poetry	Arlene Plevin, Katherine Hoene (possible)	
Geography: Biogeography, soils, microclimates, spatial variations of ecosystems	Bruce Hall	
Photography/Photo Club: Shoot location for photography projects	Laurie Usher? (possible)	
Physical Education: Outdoor yoga and meditation, tai chi	Kathleen Sheets, Cynthia Land, Roland Edgar (possible)	
Service Learning/Co-op: Community Volunteer Services	Theresa McDermott Robertta Gillis (possible)	
Technical Design/Engineering/Construction: Hypothetical building design, surveying education	Ron Raty (possible)	

NON-ACADEMIC USES		
Facilities: Composting and worm bins	Debbie Brown (possible)	
OC Foundation: Event location for fundraisers/community outreach	David Emmons	
Veterans Services: Aquaponics, raised beds, therapeutic opportunities	Larry Cleman (possible)	

Possible Community Education Uses

Olympic College and Community-led workshops and activities, providing opportunities to a range of audiences.

- K-12 and Running Start, non-profit education programs
 - Local examples/experts: Clear Creek Trail, Chico Salmon Park
- Western WA University: Huxley Environmental Programs, Education/Teaching Program
- Veteran Services
- Possible workshop examples:
 - WSU Extension/Master Gardeners, tree pruning
 - Local agriculture, vegetable gardening

***See Community Partners**

Community Engagement

Implementation

Establish the Barner Learning Landscape as a local arboretum and learning space, guided by a collaborative advisory committee.

- Formation of Barner Advisory Committee, comprised of:
 - OC faculty, staff, and student representatives
 - OC Sustainability Advisory Council representatives
 - Area leaders representing community, historic, and educational interests
- Role of advisory committee:
 - Oversight of BLL program development

- Creation and guidance of management plan
- Community outreach
- BLL program development phased to occur over 5-10 years (+)
- Make maximum use of OC students in planning, design, and construction
- Sustainable techniques
- Multiple funding sources – grants, private donors, events
- Need to consider ongoing funding

Community Partners

CONFIRMED PARTNERS	LINK TO BLL	POINT OF CONTACT
City of Bremerton	Community	Greg Wheeler
Kitsap Historical Society	Historic	Claudia Hunt
Western Washington University	Education	Jenise Baumann
POSSIBLE PARTNERS		
Bremerton Garden Club	Historic	Marlen Abrahamson
Bremerton Parks and Recreation	Community	Jeff Elevado
CK School District	Education	Jeff Friars
City of Bremerton- Community Development/Permitting	Community	?
Kitsap County Medical Society	Historic	Rebecca Carlson
Kitsap Golf and Country Club	Historic	Janet Jones
Bremerton School District	Education	?
WSU Extension/Master Gardeners	Community	?

Next Steps

BLL Initial Priorities

Main focus areas for initial phase of implementation over the next one to two years include:

- General Operations and Administrative Support
- Educational Program Development
- Grounds Development:
 1. Construction of raised beds and greenhouses
 2. Installation of restrooms
 3. Shoreline Access: installation of stairway
 4. Installation of ADA accessible walkways