

Alphean
1902.

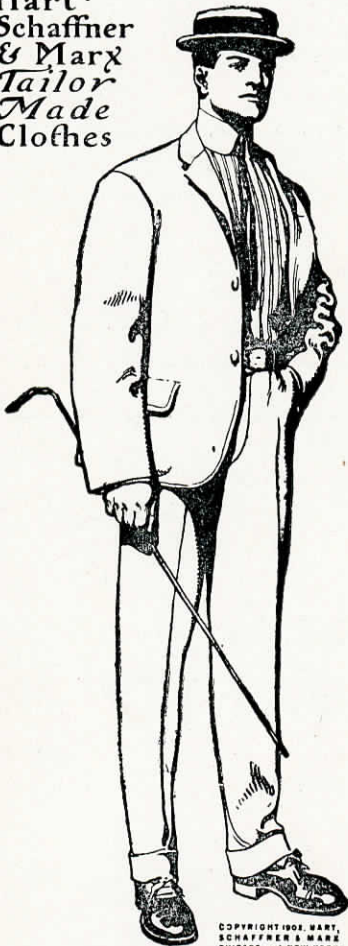


HOUSEMAN & JONES CLOTHING CO.

*Largest Exclusive
Men's and Boys'*

Outfitters in Michigan.

**Hart
Schaffner
& Marx
Tailor
Made
Clothes**



COPYRIGHT 1902 HART,
SCHAFFNER & MARX
CHICAGO AND NEW YORK

Black Clothes

for Commencement

—A SPECIALTY

Tuxedos—Plain Sacks—Cutaways.



High Grade Furnishings

New beautiful colorings in Neckwear.

Matchless Styles of

NEGLIGEE SHIRTS

all the renowned makes.



The Best and Latest in **Hats** *Automobile—
Tennis—Golf*

AND SCHOOL CAPS.



The only local house handling the

Celebrated “Varsity” Suit

So popular with young men in large cities

at \$12, \$15, \$18 to \$22.

A spirit free
 Did the poet see
 From earth to Heaven pass:—
 Lo, I am the soul
 Of Old King Coal,
 And mortals call me Gas!

“For years I have given the softest light
 That ever gladdened the work of night,
 But now I have widened my realm, you see,
 And Old King Coal is deposed by me!

“For men and women—were slaves to Coal,
 Sick in body, and vexed in soul—
 Their pockets he emptied; their backs he broke;
 And he filled their houses with grime and smoke.

“But I am the essence and spirit of Coal,
 All of his virtues are found in the soul;
 None of his faults remain with me;
 And I can cook far better than he?

“I am always ready to do your wills;
 The food I cook saves you doctor's bills;
 There is life in the food I bake and broil;
 I save you time, and money, and toil.

“When the winds of winter pierce and sting,
 Health-giving heat to your frames I bring;
 And though all around you the elements storm,
 My genial presence will keep your room warm.”

A spirit free
 Warmed my heart and me;—
 O! joy nought can surpass!
 And Old King Coal
 May stay in his hole
 For I'll cook and heat with Gas.

Gas Company.

DUDLEY E. WATERS, President.
FRANK M. DAVIS,
Cashier.

JOHN L. BENJAMIN,
Ass't Cashier.

DR. CHAS. HAZELTINE, Vice-President.
JOHN MORTON,
Ass't Cashier.

THE GRAND RAPIDS NATIONAL BANK

CAPITAL, \$500,000.00
 SURPLUS AND PROFITS, \$126,000.00

Accounts of Banks, Bankers, Corporations and Individuals Received Upon the Most Favorable Terms.
Interest Paid on Time Deposits. Issue Letters of Credit. Correspondence Solicited.
Issue Savings Books and Allow Interest at Three Per Cent.



ADVERTISEMENTS



GEO. J. KREBS, BUSINESS MANAGER.

J. H. BRUBAKER, OPERATOR.

The Brubaker Studio

FINE PHOTOGRAPHY.

Class Photographers '02

We carry the largest variety of high-class mountings of any studio in Western Michigan. Over *FORTY DIFFERENT STYLES* to select from. Our line embraces the finest goods manufactured for the photographic trade and they cannot be duplicated by any other photographer in GRAND RAPIDS, MICH.



Our twelve years' experience under the skylight, enables us to guarantee satisfaction to all our customers.

Citizens' Phone 1987.

145 MONROE STREET.

VISITORS CORDIALLY INVITED.

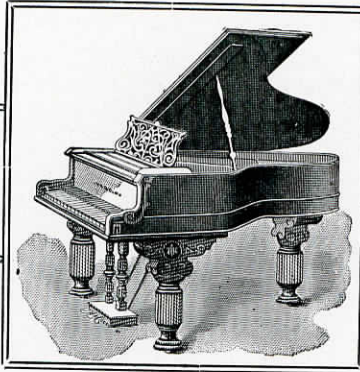
THE LEADING MUSIC HOUSE IN WESTERN MICHIGAN

JULIUS A. J. FRIEDRICH

30 and 32 Canal Street

*WEBER, A. B. CHASE,
FISCHER, FRANKLIN,
LUDWIG and KINGSBURY*

PIANOS



*A. B. CHASE and
ANN ARBOR*

ORGANS

A full assortment of Sheet Music, Music Books, Musical Merchandise and Talking Machines. Call and see the "Pianola," the best self-player in the market. . . Orders for Moving, Tuning and Repairing Pianos and Organs will receive prompt attention. Everything in the Music Line at Lowest Prices.



The Giant



A. MAY & SON

S MALL need to tell the young men of the High School of the merits of this store, for we believe we clothe over three-quarters of them now.

The young man of today demands style and character, and finds fashionable apparel here. Our clothes may not be as low priced as some of the more poorly made garments found elsewhere—but they are far more satisfactory—and cheaper in the end.

Stein-Bloch Clothes, Manhattan Shirts, Young's Hats, Flannels, Serges, Homespuns, Straw Hats and Panamas for summer wear.

WE ARE LOOKING for MORE BUSINESS.

JNO. A. COVODE
PRESIDENT
HENRY IDEMA
VICE-PRESIDENT



J. A. S. VERDIER
CASHIER
A. T. SLAGHT
ASS'T CASHIER

Kent County Savings Bank

Is a Savings Bank and will be pleased to receive your deposits.

CAPITAL \$150,000.00.
SURPLUS \$100,000.00.



ADVERTISEMENTS



The Grand Rapids, Grand Haven & Muskegon Railway

LAKE LINE

Spring Lake, Mona Lake, Muskegon Lake and Lake Michigan.

STATIONS:

Grand Rapids, Walker, Berlin, Coopersville, Dennison, Nunica, Fruitport,
Spring Lake, Grand Haven and Muskegon.



BAGGAGE CHECKED AND FREIGHT SHIPPED TO ALL POINTS.

"Macey"

SECTIONAL BOOKCASES

AND A COMPLETE LINE OF

OFFICE AND LIBRARY

Furniture



Office, Pearl Street, by the Bridge.

The regular High School Course of Study does not include instructions
as to where you should

Open a Bank Account

so it will be appropriate
to mention

The National City Bank

as A GOOD PLACE to commence and continue your

Banking Business

of any kind. The officers are especially courteous to beginners.

The Pantlind



European Plan.
Rates \$1.00 and up.

J. Boyd Pantlind, Proprietor

GRAND RAPIDS, MICH.

Morton House



American Plan.
Leading Hotel in the City.

J. Boyd Pantlind, Proprietor

GRAND RAPIDS, MICH.



ADVERTISEMENTS



LYON, KYMER & PALMER CO.

T
H
E

B
O
O
K

S
T
O
R
E

BOOKS



FINE STATIONERY
—
ENGRAVED INVITATIONS
ANNOUNCEMENTS
CARDS, ETC.
—



PING-PONG
THE GAME OF THE DAY

T
H
E

B
O
O
K

S
T
O
R
E

LYON, KYMER & PALMER CO.

The Alphean

GRAND RAPIDS
HIGH SCHOOL ANNUAL

1902

PUBLISHED BY
THE SENIOR CLASS.



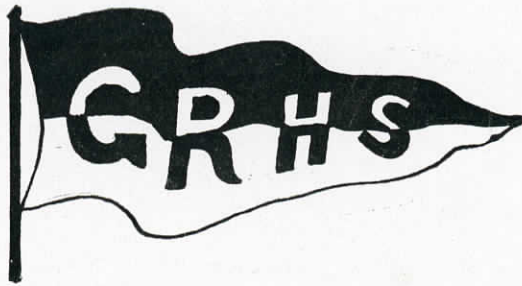
PRESS OF
SEYMOUR & MUIR PRINTING CO.
GRAND RAPIDS,
MICH.



SCHOOL COLORS

Gold and White.

Adopted April, 1893.



SCHOOL YELL

Sis, Boom, Ah!

Biff, Boom, Bah!

Grand Rapids High School.

Rah! Rah! Rah!



BOARD OF PUBLICATION

GEORGE F. CLAY, Editor-in-Chief.
MARSHALL M. UHL, Business Manager.



EDITORS:

HOWARD MORTON, ROSA SMITH,
TRIXIE PIERCE, LORAIN LOCKWOOD,
WILLIAM EDDY, RENA MOSHER.



MANAGERS:

CARL KUSTERER, ETHELYN HAINES, BLANCHE FULLER,
JAY D. UTLEY, JR. HENRY TIBBS.

Dedicated
to the
Foot Ball Team
of 1901



In Memoriam.



Clarence Helton

Born August 12, 1882.

Died December 22, 1901.



Russel Barker

Born June 11, 1886.

Died March 9, 1902.

Board of Education.



OFFICERS:

BENN M. CORWIN, President.

ED. H. STEIN, Secretary.

WILLIAM H. ELSON, Superintendent of Schools.

THERESE TOWNSEND, Assistant Superintendent of Schools.



TRUSTEES:

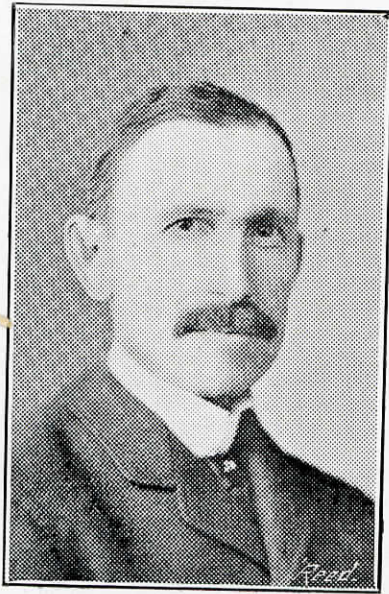
TERM EXPIRES IN 1902.

*HENRY E. LOCHER,
JOSEPHINE A. GOSS,
ELVIN SWARTHOUT,
ARTHUR C. DENNISON,
BENN M. CORWIN,
JOHN H. JOLDERSMA,
JOSEPH ALBRIGHT,
CHARLES HOLDEN,
FREDERICK WHEELER,
JOHN ROWSON,
MARY A. PHILLIPS,
JOHN M. WRIGHT,*

TERM EXPIRES IN 1903.

*JOHN A. HENDRICKS,
EDWIN F. SWEET,
CYRUS E. PERKINS,
ADELMER D. PLUMB,
HENRY H. LEFFINGWELL,
FRANK L. BEAN,
J. GEORGE BLICKLEY,
FRANK E. BROWN,
EDGAR S. KIEFER,
JOHN B. HILLIKER,
WARREN H. GIBSON,
ED. H. STEIN,*

THE MAYOR, Ex-Officio,



WILLIAM H. ELSON



William H. Elson.



THE reputation of Grand Rapids as having one of the best public school systems in the country, has been greatly increased since the appointment of Mr. Elson as Superintendent. As a man of great ability, he was recommended to that position, and such he has certainly proven himself to be.

Mr. Elson was born forty-four years ago in Ohio, and completed his education at the University of Indiana. After graduating from there he accepted a position as Superintendent of Schools at LaPorte, Indiana. He held this position for some time and then became Assistant Superintendent of Schools at Indianapolis. Mr. Elson next moved to West Superior, Wisconsin, and for five years previous to his coming to Grand Rapids was Superintendent at that place.



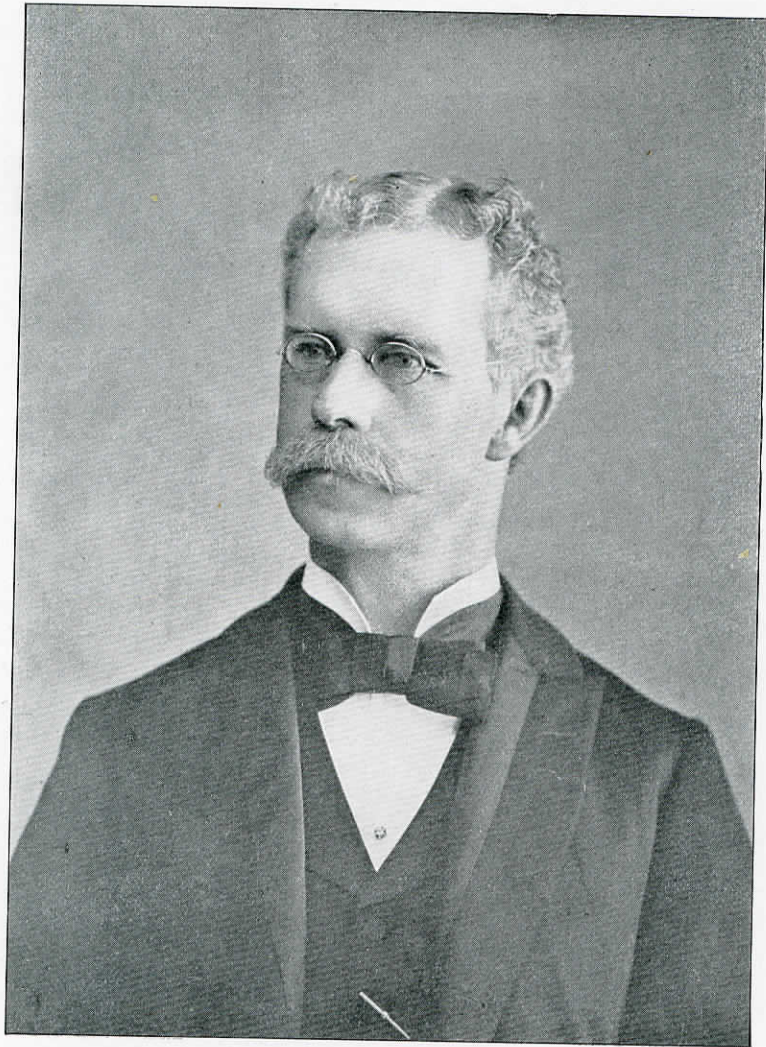
ALBERT J. VOLLAND



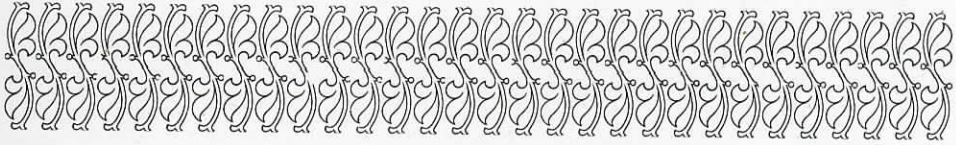
Albert J. Volland.



ALBERT J. VOLLAND, for the last six years principal of the Central High School, was graduated from the University of Michigan in 1876, where he received his degree of A. B. After taking a post-graduate course in 1877, he accepted a position in the State Normal School at Platteville, Wisconsin, and for the next five years taught at that place. From Platteville Mr. Volland went to Ypsilanti, Michigan, where he was for three years principal of the High School there. In 1885 he came to Grand Rapids, and until 1889 taught in the old Central. For the next seven years he was principal of the High School at Racine, Wisconsin, and in 1896 filled the position in our High School, left vacant by Mr. Greeson. His ability and influence show themselves plainly in the flourishing condition of the school.



ALBERT JENNINGS



Albert Jennings, B. S., L.L. B.



IN connection with the High School and for the convenience of the West Side pupils, is the Union School. This school, of course, needs a man of great experience, as well as ability. In no other man, perhaps, do we find these two chief traits so well combined, as they are in Mr. Jennings. He is not only capable of conducting the work in the grades under the most modern methods, but also handles the lines of work offered in the higher grades

Mr. Jennings was born in Birmingham, Michigan, and began his education in the village district school. When a boy he entered the new Academy founded at that place, preparatory to the University of Michigan. He was graduated from the University at the age of twenty-one and then took a three years' law course. After leaving the University he practiced law for a few years and was then made Superintendent of Schools in Manistee. From that city he came to Grand Rapids to accept the position he still holds, i. e., principal of the Union School.



CENTRAL HIGH SCHOOL.

Central High School Faculty.



ALBERT J. VOLLAND, A. B., Principal, 145 Madison Avenue.	
ALICE M. JAMES, A. B., Preceptress, 130 North Lafayette Street,	<i>Mathematics</i>
AGNES R. GINN, Session Room, 47 Barclay Street,	<i>French, English</i>
EDWIN F. SNELL, B. S., Session Room, 101 Crescent Avenue,	<i>Mathematics</i>
ALVA P. SRIVER, B. S., Session Room, 961 Rose Street,	<i>Mathematics</i>
FRANK A. BACON, A. B., Ses'n Room, 23 Dunham St.,	<i>History, Civics, Economics</i>
S. HELEN ALLEN, Ph. B., 3 Windsor Terrace,	<i>Latin</i>
BELLE CHALMERS, 33 Paddock Street,	<i>Bookkeeping</i>
HELENE C. CHRIST, 104 Washington Street,	<i>German</i>
EMMA J. COLE, 159 Ransom Street,	<i>Botany</i>
EVA J. DANIELS, A. B., 342 East Fulton Street,	<i>Latin, Mathematics</i>
ELLEN DEAN, 158 East Bridge Street,	<i>History</i>
GRACE F. ELLIS, B. S., B. L., 40 North Union Street,	<i>Botany, Zoölogy</i>
HELEN R. GARDNER, 11 North Union Street,	<i>Mathematics</i>
EDWARD J. HALL, A. B., 58 Briggs Court,	<i>Chemistry</i>
NELLIE M. HAYES, B. S., 1166 Fifth Avenue,	<i>English</i>
CARRIE R. HEATON, B. L., 382 Lyon Street,	<i>English, Mathematics</i>
IRMA HEATH, Ph. B., 41 Eleventh Street,	<i>English</i>
ARTHUR H. HOLMES, B. L., 173 Second Avenue,	<i>Bookkeeping, German</i>
FAY MAR HOPKINS, 60 Briggs Court,	<i>Latin, History</i>
CORNELIA HULST, 88 Fountain Street,	<i>English</i>
CHARLES A. JEWELL, JR., B. S., 21 Sinclair St.,	<i>Physics, Mathematics, Physiography</i>
ANNA S. JONES, A. B., 181 N. Lafayette Street,	<i>Latin, Greek</i>
SADIE R. LEAVITT, B. L., 70 Paris Avenue,	<i>English</i>
ESTHER H. MARSH, A. B., 13 Portsmouth Terrace,	<i>History</i>
CAROLINE A. SHELDON, The Plaza,	<i>Drawing</i>
MARY S. SIMPSON, A. B., 700 Jefferson Avenue,	<i>English</i>
BURTON E. SMITH, 34 Hermitage Street,	<i>Physics</i>
LYMAN E. SMITH, 56 Bostwick Street,	<i>English</i>
AMANDA STOUT, 173 Ransom Street,	<i>History</i>
ELIZABETH YOST, B. S., 101 Fountain Street,	<i>German</i>
MAX B. LEAVITT, A. B., North Ionia Street School, 70 Paris Avenue.	
CORA L. BODWELL, A. B., North Ionia Street School, 169 Cass Avenue.	
IVA M. BELDEN, 225 Central Avenue,	<i>Clerk</i>

Union High School Faculty.

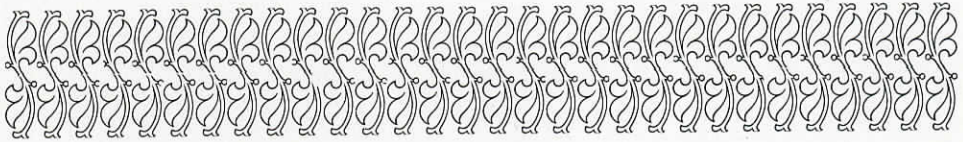


- ALBERT JENNINGS, B. S., LL. B., Principal, 65 Scribner Street.
- ELWOOD F. DEMMON, A. B., Session Room, 415 East Bridge Street, *English*
- GURNEY O. DILLINGHAM, Session Room, 282 Terrace Avenue,
Bookkeeping, Mathematics
- MARION L. JENNINGS, Session Room, 60 Briggs Court, *Latin, English*
- ELTON P. BILLINGS, A. B., 260 Grandville Avenue,
Chemistry, Physiography, Zoology
- AUGUSTA L. FRANCK, 232 Turner Street, *French, German, History*
- AMELIA MCSWEENEY, A. B., 197 Jefferson Avenue, *Mathematics*
- MINNIE I. NEELAND, 72 Kellogg Street, *Drawing*
- ALICE A. PARKER, 35 Morrison Street, *Botany, English*
- EVELYN C. VYN, A. B., 363 N. Front Street, *History*
- FRANK F. ULRICH, 260 West Broadway, *Clerk*





MISS ALICE M. JAMES.



Miss Alice M. James, A. B.



MISS ALICE M. JAMES was born in Manchester, New Hampshire. When she was still a child her parents moved to Wisconsin, where they lived for some time, and later settled in Minnesota. After graduating from our own Central High School she went to Carleton College, at Northfield, Minnesota, where she received the degree of A. B. Later, she again came to Grand Rapids, taught for one year in the Wealthy Avenue School and for one year in the Union School. She was next given charge of the grammar department in the old High School, and when the new building was completed she was given control of the Junior Session Room.

At the resignation of Mrs. Milner, Miss James, who was so highly valued for her understanding and control of pupils, was at once made preceptress and given charge of the Senior Session Room. Every graduate has looked back with pleasure on his last school days in Room 1, with Miss James.

Senior Class.



OFFICERS:

GEORGE W. CLARK,	-	-	-	PRESIDENT
CARRIE HURT,	-	-	-	VICE-PRESIDENT
LOIS PATTERSON,	-	-	-	SECRETARY
WILDER RICH,	-	-	-	TREASURER
LEWIS WHITNEY,	-	-	-	SERGEANT-AT-ARMS
VIOLET HART,	-	-	-	PROPHET
MARION POWERS,	-	-	-	HISTORIAN

COMMITTEES:

EXECUTIVE.

Chairman, WILL EDDY,
RAY SPRING,
GEO. F. CLAY,
MARION POWERS,
RENA MOSHER,
CARL KUSTERER,
ROSA SMITH,
GLENN SAYERS,
MABLE ALLEN,
NELSON MAYNARD.

MEMORIAL.

Chairman, GEORGE BERKEY,
LINA BOSTWICK,
COILA FOX,
ELVA COOK,
BLANCHE FULLER,
HENRY TIBBS,
ISAAC BUTTERFIELD,
ETTA SCHNEIDER,
BEULAH SCHANNESY,
LUCY NEWNHAM.

PHOTOGRAPH.

Chairman, BRUF OLIN,
KATHLEEN DANIELS,
ETHEL INGRAM,
JAY UTLEY,
HARRY WHITMAN,
ANNA WORKMAN,
MARSHALL UHL,
PARK McMULLEN,
CARRIE WARD,
HELENA OTTE.

ENTERTAINMENT.

Chairman, LORAIN LOCKWOOD,
EUGENE HOUSEMAN,
WALTER MOFFAT,
EDITH SHATTUCK,
ETHELYN HAINES,
VIOLET HART,
AURA ATEN,
CHRISTINE LOUWERSE,
ARTHUR TOREN,
ETHELYN DE VORE.

MOTTO:—*Honore et Labore.*

CLASS YELL.

*With a He, and a Ha, and a Hum,
Room stick a-ric-rac,
Ric-rac-roo,
Grand Rapids High School
Naughty-two.*

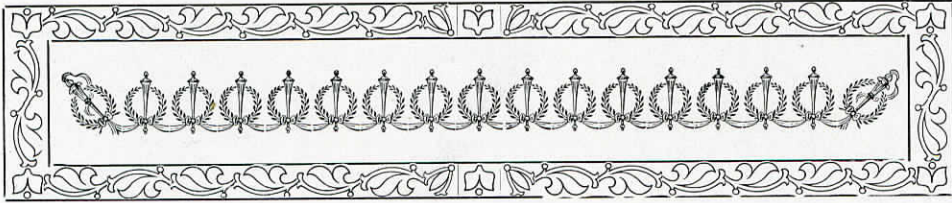


DICKINSON-BROS

LOIS PATTERSON
CARRIE HURT

WILDER RICH
GEORGE W. CLARK

VIOLET HART
MARIQ POWERS



Graduating Class of 1902.

- MABEL EMILY ALLEN, Two Years' Language
 Girls' Basket Ball Club; Executive Committee Senior Class.
- GRAYDON ROY ANDREW, $\Phi \Sigma$, Engineering
 Junior Executive Committee; Senior Banquet Committee; H. S. A. A.; Literary Society; H. S. Party Committee; Second H. S. Foot Ball Team; Alumni Decoration Committee; Phi Sigma Hockey Team, '00-'01; Phi Sigma Foot Ball Team, '99; Phi Sigma Base Ball Team, '00; Director of Decoration Day, '01.
- AURA ANNA ATEN, Scientific
- HAROLD CLARK BALDWIN, $M \Delta \Sigma$, Scientific
 Second Foot Ball Team, '99; Captain Second Foot Ball Team, '00; Treasurer H. S. A. A., '00-'01; First Foot Ball Team, '01; Executive Committee Literary Society, '99-'00; Junior Invitation Committee, Class '02; Captain Mu Delta Sigma Foot Ball Team, '01; Muskegon Meet Track Team, '02.
- MARY ELIZA BALE, Four Years' Language
- EDWARD NORTON BARNARD, Six Years' Language
- GRACE EDEL BARNES, Two Years' Language
 Literary Society, '99, '00, '02; Secretary Junior Class; Vice President Literary Society, '02; Treasurer Basket Ball Club, '02.
- HANNAH REBECCA BENNETT, Four Years' Language
- GEORGE PHELPS BERKEY, $\Gamma \Delta \Psi, \Delta \Delta$, Four Years' Language
 "Helios" Board, Vols. XVII, XVIII, XIX and XX; Chairman Memorial Committee; Chairman Decoration Committee Alumni Re-Union, '02; H. S. Party Committee, '02; Junior Executive Committee; Manager H. S. Base Ball Team, '02; G. R. H. S. Base Ball Team, '99, '00, '01, '02; Second H. S. Foot Ball Team, '00; Junior Base Ball Team, Manager Junior Base Ball Team; Gamma Delta Psi Theatricals, '02; Gamma Delta Psi Foot Ball Team, '00, '01; Gamma Delta Psi Base Ball Team, '01; Manager Gamma Delta Psi Base Ball Team, '01; Captain and Manager Gamma Delta Psi Base Ball Team, '02; Gamma Delta Psi Hockey Team, '02; Captain Gamma Delta Psi Hockey Team, '01; Senior Base Ball Team.

- FLORENCE REGINA BERTSCH, Six Years' Language
 Pin Committee Junior Class; Girls' Basket Ball Club; Literary Society, '01, '02.
- SHELBY MARTIN BOORHEM, M Δ Σ, Four Years' Language
 Executive Committee, Junior Class; Chess Club; H. S. A. A., '99, '00, '01, '02; Literary Society, '99, '00, '01.
- LINA E. BOSTWICK, Two Years' Language
- MYRTLE BLANCHE BROWN, Scientific
 Independent Society.
- VIVIAN PEARLE BROWN, Two Years' Language
- ARCHIBALD DRAKE BUTTERFIELD, Six Years' Language
- ISAAC LAWRENCE BUTTERFIELD, Six Years' Language
 Motto Committee; Debater at Allegan; Critic Literary Society.
- GEORGE WINFRED CLARK, Engineering
 President Senior Class, '02. Treasurer Camera Club, '02; Secretary Independent Society, '01; Alumni Decoration Committee, '02; Junior Yell Committee; Junior Base Ball Team, '01; H. S. A. A.; Literary Society; Chairman Camera Exhibit Committee, '02; H. S. Party Committee; Senior Debating Team, '02; Senior Base Ball Team, '02; Independent Base Ball Team, '99, '00; Executive Committee Independent Society, '01.
- GEORGE FRANCIS CLAY, Γ Δ Ψ, Δ Δ, Four Years' Language
 Circulator "Helios," Vol. XVII; Business Manager "Helios," Vol. XVIII; Foot Ball Team, '99, '00, '01; Manager Track Team, '01; Gamma Delta Psi Foot Ball Team, Base Ball and Hockey Teams, '99, '00, '01; Manager Gamma Delta Psi Foot Ball Team, '00; H. S. Hockey Team; Assistant Manager Rivals; Manager Sharps and Flats; Chairman Junior Executive Committee, Senior Executive Committee; Vice President Athletic, '00; Captain Senior Base Ball Team; Editor-in-Chief "The Alphean."
- LOTTIE COLSON, Six Years' Language
- CLAUDE AARON CONGER, Four Years' Language
 Vice President Chess Club.
- ELVIE SARAH COOK, Commercial
- MARGARET BELLE CURTISS, Commercial
- KATHLEEN ROSE DANIELS, Six Years' Language
- ARTHUR JOHN DAVIDSON, M Δ Σ, Scientific
 H. S. A. A., '99, '00, '01, '02; Base Ball Team, '00, '02; Mu Delta Base Ball Team, '99, '00, '01, '02; Mu Delta Foot Ball Team, '01; Chess Club; Literary Society; Captain Junior Base Ball Team, H. S. Hockey Team, '01; Mu Delta Hockey Team, '00, '01, '02; Alumni Decoration Committee, '02.
- GEORGIA SYLVIA DAVIS, Four Years' Language

- HENRIETTA ELLEN DE BLONDE, Commercial
- INA BIRDELLA DENNIS, Six Years' Language
- ISAAC DE PAGTER, Four Years' Language
- JOANNA MARGARETHA DE Vlieg, Two Years' Language
- ETHELYN ALICE DE VORE, Six Years' Language
Literary Society, '00; Junior Decoration Committee, '01.
- HOWARD BLAINE DROLLINGER, Scientific
Independent Society, '00, '01, '02; Sergeant-at-Arms Chess Club, '01, '02; Literary Society, '01.
- WILLIAM EPHRAIM EDDY, Φ Σ, Six Years' Language
H. S. A. A., '99, '00, '01, '02; U. S. Representative from Maryland, H. R., '01; Secretary Chess Club; President Chess Club; Clerk of Junior Elections; Usher Commencement Exercises, '01; Junior Motto Committee; Literary Society, '00, '01, '02; President Literary Society, '02; Senior Class Debating Team; Chairman Senior Executive Committee; Correspondent "Every Other Week;" Assistant Editor "Alphean" Board.
- HARRY EDISON, Commercial
- BERTHA ANNA FOOT, Commercial
- SARAH E. FORBES, Two Years' Language
- COILA MAY FOX, Six Years' Language
Secretary Camera Club, '00, '02; Junior Decoration Committee.
- BLANCHE MARGARET FULLER, Γ Δ T, Δ Δ, Six Years' Language
President Basket Ball Club, '02; Assistant Board of Managers, Alphean; Secretary Literary Society, '00; Chairman Pin Committee, '01; H. S. Basket Ball Team, '02; Memorial Committee Senior Class; Associate Editor "Helios," Vols. XVII, XVIII, XIX, XX; Basket Ball Club, '02; H. S. A. A., '00, '01, '02; Literary Society, '99, '00, '01.
- ALICE CORNELIA GODWIN, Six Years' Language
Junior Decoration Committee, '01; Chairman Decoration Committee, Mr. Bacon's Room, '01; Basket Ball Club, '02.
- FRANCES LANGLEY GOODRICH, Four Years' Language
- OTHILDA ROSINA GREVE, Four Years' Language
- HARRY JOHN HAGENS, Commercial
- ETHELYN LEOLA HAINES, Two Years' Language
Junior Entertainment Committee; Alphean Board of Managers; Senior Entertainment Committee; Basket Ball Club, '02; Literary Society Dramatics, '01.

- VIOLET DOSIA HART, Six Years' Language
Literary Society, '01; Entertainment Committee Senior Class; Senior Class Prophetess.
- MARION JOSEPHINE HETH, Two Years' Language
Independent Society; Literary Society; Basket Ball Club; H. S. Basket Ball Team, '02.
- BERTHA MAGDALENE HIRTH, Four Years' Language
Literary Society, '99, '00, '01; H. S. A. A.; Basket Ball Club, '02.
- EUGENE BERNARD HOUSEMAN, $\Gamma \Delta \Psi$, Engineering and Six Years' Language
Editor "Helios" Vols. XIX, XX; Senior Entertainment Committee.
- CARRIE ISABELLE HURT, Four Years' Language
Vice President Senior Class; Junior Invitation Committee; Basket Ball Club.
- ETHEL LUCILE INGRAM, Commercial
- GEORGE KINNEY JOHNSON, $\Gamma \Delta \Psi$, Four Years' Language
Literary Society, '99, '02; H. S. A. A., '99, '02; Junior Pin Committee; Associate Editor "Helios" Vol. XVIII; Gamma Delta Relay Team.
- LULU VIRGINIA JOHNSON, Two Years' Language
Executive Committee; Independent Society, '01; Decoration Committee Junior Class; Librarian Camera Club, '01.
- CLARA LOUISE JOHNSTON, Two Years' Language
- JESSIE EMILY JOHNSTON, Two Years' Language
- ABI ELLA KELLOGG, Commercial
- HATTIE MARIE KEYES, Four Years' Language
- ANDREW JUDSON KOLYN, Six Years' Language
Independent Society.
- PAULINE KUEMMERLE, Four Years' Language
- CARL KUSTERER, $M \Delta \Sigma, \Delta \Delta$, Six Years' Language
Correspondent "Every-Other Week" Vol. I; Asst. Business Manager "Every-Other-Week" Vols. I and II; Business Manager "LaPlume" Vol. III; Manager Second Foot Ball Team; Manager Foot Ball Team (1); Manager Mandolin Club (1); Board of Managers "Alphean;" Chief Usher Commencement, '01; Judge Field Day, '01; Senator from Kentucky; Clerk of Court; Pin Committee; Executive Committee Senior Class; Mu Delta Foot Ball Team; Base Ball Team and Hockey Team; Second Foot Ball Team; Mu Delta Relay Team, Sergeant-at-Arms Junior Class; Mandolin Club (4); H. S. A. A. (4); Literary Society (4); Board of Control; "Rivals" Program Committee; Chairman Thanksgiving Day Foot Ball Program Committee; Field Day Program; Indoor Athletic Team; Captain Mu Delta Sigma Relay Team, '02; High School Party Committee; High School Hockey Team.

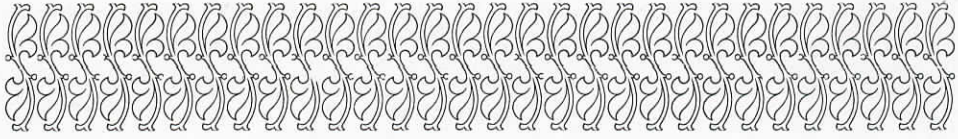
- LOU MARION LACEY, Two Years' Language
Independent Society; Vice President Independent Society; Executive Committee Independent Society.
- LORAIN VOLLAM LOCKWOOD, Four Years' Language
Literary Society, '99, '00, '01, '02; Junior Executive Committee, '01; Secretary Basket Ball Club, '02; Associate Editor "Alphean" Board.
- ARTHUR HERBERT LOUCKES, Two Years' Language
- CHRISTINE HELEN LOUWERSE, Four Years' Language
Senior Entertainment Committee.
- JAMES NELSON MAYNARD, $\Gamma \Delta \Psi$, Six Years' Language
Circulator "Helios" Vol. XVI; "Helios" Board Vol. XVII; Pin Committee, '02; Foot Ball Team, '01; Manager Track Athletics, '02; Track Team, '02; Captain Gamma Delta Base Ball Team, '00; Gamma Delta Hockey Team, '01, '02; Gamma Delta Foot Ball Team, '00, '01; Executive Committee, '02.
- ELMER GEORGE McCONNELL, Four Years' Language
- BEULAH BELLE McCORMICK, Four Years' Language
- PARKE HATHAWAY McMULLEN, $\Gamma \Delta \Psi, \Delta \Delta$, Engineering
Circulator and Assistant Business Manager "Helios;" Pin Committee, '01; Photograph Committee; Literary Society; H. S. A. A.
- CHARLES WARREN MILLER, Two Years' Language
- NELLIE EDNA MILLER, Two Years' Language
- WALTER GORDON MOFFAT, Four Years' Language
Water Color Class, '00; H. S. A. A., '00; Junior Decoration Committee, '01; Literary Society, '99, '00; Entertainment Committee, '02.
- STODDARD STEVENS MORE, $\Gamma \Delta \Psi$, Six Years' Language
- STANLEY MORRIS, $\Gamma \Delta \Psi$, Six Years' Language
- HOWARD MORTON, $M \Delta \Sigma$, Engineering
Foot Ball Team, '01; Associate Editor "Alphean" Board.
- HELEN ELVIRA MOSELEY, Six Years' Language
- RENA MOSHER, Six Years' Language
Junior Class Decoration Committee; Girl's Department "LaPlume" Vol. V; G. R. H. S. Basket Ball Team No. 1; Literary Society, '00, '01, '02; Associate Editor "Alphean" Board; Executive Committee Senior Class; Basket Ball Club.
- JENNIE E. MURPHY, Six Years' Language

FLORENCE PAULINE MYERS,	Commercial
MABEL BLANCHE NELSON,	Four Years' Language
LILLIAN NEWHOUSE,	Six Years' Language
ETTA LILLIAN NEWMAN,	Six Years' Language
LUCY ALLEN NEWNHAM, Literary Society; Basket Ball Club; Junior Color Committee; Senior Memorial Committee; Judge Senior Elections.	Six Years' Language
BRUFF WARE OLIN, H. S. A. A.; Track Team, '00, '01, '02; Junior Base Ball Team; Senior Base Ball Team; Camera Club; Chess Club; Chairman Senior Photograph Committee; Literary Society; H. S. Base Ball Team, '02.	Engineering
JOSEPHINE CORNELIA OOM, Independent Society.	Two Years' Language
HELENA OTTE, Basket Ball Club, Junior Decoration Committee; Senior Photograph Committee; Vice President Basket Ball Club.	Two Years' Language
LOIS ALICE PATTERSON, Secretary Senior Class, '02.	Four Years' Language
MARGARET PENNEY,	Six Years' Language
CHRISTINE PETERSON,	Two Years' Language
SIGNI CHRISTINA PETRIE,	Two Years' Language
TRIXIE MAE PIERCE, Junior Color Committee; Senior Banquet Committee; Associate Editor "Alphean" Board.	Six Years' Language
JAMES WILLIAM POWERS, $\Phi \Sigma$, Vice President Sophomore Class, Union High School; Vice President Junior Class, '02; Usher, Commencement Exercises, '01; Executive Committee Literary Society '01, '02; Senior Election Board; Union High School Base Ball Team; H. S. A. A., '02.	Two Years' Language
MARION LOUISE POWERS, Junior Motto Committee; Senior Executive Committee; Class Historian; Basket Ball Club; Literary Society, '99; Chairman Decoration Day Entertainment Committee.	Six Years' Language
GEORGE PETER REELMAN, Independent Society.	Engineerin

WILDER MELOY RICH, Treasurer Senior Class; President Camera Club, '01; Treasurer Independent Society, '01; Yell Committee, '02.	Engineering
EDWARD ALBERT RICHARDS,	Four Years' Language
JOHN HERBERT RILEY, $\Phi \Sigma$, U. S. Representative from Maryland, H; R. 1 year; Treasurer Junior Class, '02; H. S. A. A., '99, '00, '01, '02; Indoor Athletic Team, '02; Track Team, '00, '01; Literary Society, '02.	Six Years' Language
SADIE ALENA ROBERTS, Motto Committee, '02; Librarian Camera Club.	Two Years' Language
EDITH CARRY ROBINSON,	Two Years' Language
JENNIE OLIVIA ROSE,	Four Years' Language
FRANK WILLIAM ROSENKRANS, Independent Society.	Six Years' Language
CONSTANCE MAYFIELD ROURKE, Literary Society, '99, '00, '01; Basket Ball Club; Junior Class Color Committee.	Six Years' Language
FRED NELCY ROWE,	Four Years' Language
EDNA HELEN RUTKA,	Six Years' Language
ALICE VIOLET SAUNDERS,	Commercial
GLENN POTTER SAYERS,	Four Years' Language
GERTRUDE SHOEMAKER,	Two Years' Language
HENRIETTA A. SCHNEIDER, Basket Ball Club; Senior Class Memorial Committee.	Six Years' Language
ALFERD BURTON SCOPY, Sergeant-at-Arms, Union Junior Class; Manager Senior Base Ball Team, '02.	Six Years' Language
BEULAH ELIZABETH SHANNESSY, Senior Memorial Committee.	Four Years' Language
EDITH MARY SHATTUCK,	Two Years' Language
CLYDE EDWARD SMEDLEY,	Four Years' Language

CARRIE GAY SMITH,	Four Years' Language
OLLIE MAY SMITH,	Four Years' Language
ROSA VIOLA SMITH, Junior Decoration Committee; Class Song, Arbor Day Banquet, Union School; Literary Society; H. S. A. A.; Executive Committee, Senior Class; Associate Editor "Alphean" Board.	Scientific
ESTELLA ELIZABETH SPRAGUE,	Commercial
RAY SPRING, Track Team, '01, '02; Captain Second Foot Ball Team, '00; H. S. A. A., '99, '00, '01, '02; Literary Society, '00, '01, '02; Junior Executive Committee; Senior Election Board.	Engineering
INA STEELE,	Four Years' Language
PHEBE MILDRED STILES, Basket Ball Club.	Six Years' Language
HARRY STORY, H. S. A. A., '99, '00, '01, '02; Literary Society, '01, '02; Junior Decoration Committee; Managing Editor "LaPlume" Vol. V; Editor "LaPlume" Vol. VI.	Commercial
CHARLOTTE DOBBIN TAYLOR,	Four Years' Language
HENRY HOAG TIBBS, M Δ Σ, Track Team, '00, '01; Foot Ball Team, '01; Junior Executive Committee; Senior Memorial Committee; Associate Editor "Alphean" Board.	Engineering
LOTTIE CAROL TIPTON, Literary Society, '99, '00, '01, '02; H. S. A. A., '00, '02; Decoration Committee, '01.	Six Years' Language
J. ARTHUR TOREN, Independent Society; President Independent Society, '01; Prosecuting Att'y of Superior Court; Literary Society; H. S. A. A.; Camera Club; Chairman Junior Decoration Committee, '01; Chairman Executive Committee Independent Society, '02.	Four Years' Language
JOSEPH WADE TUCKER, M Δ Σ, Mu Delta Sigma Base Ball Team; Hockey and Foot Ball Teams; H. S. Foot Ball Team, '01.	Scientific
ROY PRATT TUCKER,	Four Years' Language
JULIA DOROTHEA TUSCH,	Four Years' Language
MARSHALL MORTIMER UHL, Γ Δ Ψ, Δ Δ, H. S. A. A., '00, '01; Literary Society, '00; Chairman Entertainment Committee, Junior Class; Assistant Prosecuting Att'y, Mock Trial; Literary Society, '01; Assistant Business Manager "Helios" Vol. XVII; Manager "Helios" Vols. XVIII, XIX; Member of Cast, Sharps and Flats; Senior Photograph Committee; Manager-in-Chief "Alphean" Board.	Six Years' Language
FRANK FELKER ULRICH,	Engineering

JAY DEWITT UTLEY, JR., M Δ Σ, H. S. A. A., '99, '00, '01, '02; Treasurer H. S. A. A., '00, '01; Junior Invitation Committee; Senior Photograph Committee; Business Manager "LaPlume" Vol. V; Board of Managers "The Alphean;" Mu Delta Sigma Foot Ball Team, '01.	Engineering
ADRIANA VAN DOORN,	Scientific and Two Years' Language
FRANCES ELINOR VAN HESS,	Four Years' Language
GERTRUDE VINKEMULDER,	Two Years' Language
JEANNETTE E. VOLMARI,	Four Years' Language
MARY A. WAGNER, Basket Ball Club.	Two Years' Language
NELLIE MAUDE WALL,	Four Years' Language
CARRIE ROBINSON WARD, Γ Δ T, Literary Society, '00, '01; Junior Pin Committee; Senior Class Photograph Committee; Associate Editor "Helios," Vol. XX.	Six Years' Language
ETHEL BELLE WARD, Basket Ball Club, '02.	Scientific
OLIVE JESSIE WATSON, Γ Δ T, Junior Class Executive Committee; "Helios" Board, '01; Basket Ball Club; H. S. A. A.; Literary Society.	Scientific
HELEN MARO WHEELER, Junior Invitation Committee; H. S. A. A., '00; Literary Society, '00; Basket Ball Club.	Four Years' Language
HARRY GILL WHITMAN, Senior Photograph Committee.	Engineering
LEWIS EUGENE WHITNEY,	Engineering
CHARLES FRANCIS WOLCOTT,	Commercial
DORIS MINNIE WOLFE, Literary Society; Secretary Independent Society, '02.	Two Years' Language
ANNA ELIZABETH WORKMAN, Literary Society, '99, '00, '01; H. S. A. A., '01; Basket Ball Club, '01, '02; Senior Photograph Committee; Girls' Department "LaPlume," '01, '02,	Two Years' Language
FRED DOW WORKS,	Scientific



CLASS HISTORY.



ONE bright morning in June, a traveler was journeying through sunny Phocis in Central Greece. How tired he was! but he must tread on, for it was his aim to reach fame renowned Delphi that day. An old man came jogging down the road on the back of a lazy donkey. "Ah! he is an Athenian, I know," thought the traveler. "What clear-cut features and noble forehead he has!" Then in a loud voice he called out, "Good-morning, stranger, how far is Delphi from here?" The old man looked up with startled eyes, and, after gazing at the traveller for a moment, he said in a soft, clear voice, "Not far; do you not see the tops of those mighty oakes yonder and amidst them those white pillars?" "Ah! yes, I see them plainly, can that be Delphi? I had almost given up hope of reaching there today." The old man seemed to become interested at these words, and came nearer to the traveler. "Stranger, are you seeking the ruins of the Pythian shrine? If you are, let me accompany you. I cannot bear to go there alone, for superstition takes me into its grasp, even when I draw near." "Indeed, I could wish nothing better," replied the other.

The two went slowly on, and within a short time they stood before the ruins of an ancient temple. Two pillars were still standing. How beautiful they were even now,—of Parian marble. Awed by its ancient memories and once world-wide influence, the traveler stood silently viewing the mass of ruins. Suddenly he thought he saw writing upon some of the large stones opposite. He hurried to where they were, and found, to his amazement, that the stones

were tablets and upon them was Greek writing. The old man came to behold them; everything here was to him a mystery. The traveler drew pencil and paper from his pocket, and with earnest endeavor, began a translation. From the form and style he could tell that the writing was a prophecy. Thereupon the fact was proven to him that these tablets had been used to take down the words of a Pythian God. His companion stood near, watching all with trembling interest. Thus read the translation:

Tablet I.

'Afar in the west, dwell a tribe known as Naughty-twos—a name signifying the time of their departure from this realm of bright hopes and aspirations. The land in which they dwell is noted for its wise men and women. Their fame spreads afar over land and inland sea. The Naughty-twos have dwelt here for four or five years, coming originally from the realms of Wardschool, Centralgram, and Townludus. When they first enter this realm, they are young and of little knowledge. They are easily frightened by threats from the older and wiser. They wish to become great and mighty as a tribe; but they do little to show their real ability for two years. At the end of that period of time, they gather together to choose a council, which carries on the business of the tribe. A mighty warrior is chosen as their Chief and one of the clan of Unionsch to assist this Chief. Another is chosen to write down the record of the tribe's exploits. Two more warriors, the tribe selects, to fill the number of its counselors,—the one to wrest taxes from the people, the other known as Sergeant-at-Arms, to keep peace in the realm.

The tribe is not without a shield of honor, which is made of costly gold with the base of black and red. These last are their favorite colors, which they ever display in contests. A precedent has been established for each tribe to choose a war-whoop to arouse its courage and daring, when the enemy draws near. A band of warriors is sent out to choose a most inspiring one. Upon the approval of all, this is their selection.

' With a hee, and a ha, and a hum,
Boom stick-a-rick rack rick rack roo,
Grand Rapids High School
Naughty-two.

Upon the tribal ensigns is engraved, "*Labore et Honore*," which means, "by work and honor." This the tribe call their motto.

Tablet II.

A tribe known as Naughty-one began to molest the tribe of Naughty-two by all manner of theft. These acts are resented, and the latter avenge them by the agency of three of their warriors, one of them being their mighty chief. The King of the nation becomes very angry. Lawlessness, however, goes on among the Naughty-ones and they make an attempt to carry off the Chief of the Naughty-two's into a far off country. But lo! they are outwitted by the cleverness of this Chief. His own tribe behold him, safe amidst rejoicing and ringing of bells. After this exploit the hostility of the Naughty-ones abates. A challenge is now sent to them by the other tribe to contest in the open arena in feats of strength. Here more renown is added to the banners of Naughty-two.

In the beautiful month of June the Naughty-ones prepare to depart to distant lands. Their opponents in so many contests now hold a delightful festival for them, after which all depart in peace and with many happy remembrances, to the land of summer vacation.

Tablet III.

The Naughty-twos return to the valley to remain for another year. Their warriors struggle on the gridiron with the outlying nations. By one nation alone are they defeated. They are crowned with fresh green laurels, for nobly have they struggled.

When all these contests are over, a clan known as Litsociety meet together to take part in debates and to listen to their members talk upon important questions that arise before the realm. Then two other clans known as Gdelsi and Gdeltau appear upon the stage, as the Athenian youths and maidens do. For the first time the women band themselves together in a Basket Ball league and choose a council to manage their affairs. The warriors are forbidden entrance to these Amazonian games until the women become expert at them. Then it is that the entire tribe, together with many others, see them win laurels in the land of Ymseea.

Tablet IV.

The tribe chooses its leaders as before, amidst great excitement, for there are four clans struggling this time for the leadership. All the chosen chiefs are of the clan, independent, except one, who is of the clan of Gdelsi. Later the tribe meet together and select two of their members as counsellors,—the one to prophecy their future, the other to record their tribal exploits.

Now a great contest is held in the open arena between all the tribes of the realm. There are many games to try the contestants' strength in running and jumping, in throwing heavy weights, and in hurling a large ball, called the pig-skin. The victors receive as rewards, badges of yellow. In a short time they go to the land of U. of M. to contest with victors from many different lands. A challenge is received from a far off country known as Allegan, for a debate upon some great tribal question. The tribe accepts it and sends three mighty chiefs to defend it.

* * *

Here the writing upon the tablets ended. The traveler looked up from his paper. Suddenly had the old man disappeared from view; then, the ruins; and when I looked again, the traveler had faded into mist. But his manuscript had fallen into my hands.

Has this prophecy passed into history? Yes, it has, and our school-life is now ending, where it has lasted long. During the senior year, the Class of 1902 has had no exciting exploits to write down within her annals. None of her members have sought to destroy school property, and so we may say, "Blessed be the class that records no such escapades in her history." As we try to realize that we are leaving, we cannot help but feel sincere gratitude toward our kind instructors—those who have certainly been a great influence in molding our characters, as they are. We sincerely hope that those who fill our places will do no less well than we have done, but better, as we hoped to do.

Marion L. Powers, '02.

CLASS PROPHECY



I STOOD beside the magic fount
On Khabsha's distant, lonely mount.
The sky was clear and darkly blue,
A strange, unnatural, wierdsome hue.
And up the ark of deepest gloom
Arose the silver, crescent moon;

Unattended save at the right,
Where a crimson star glowed strangely bright.
Dark was the mount and all around
Reigned silence deep and most profound.
The waters in shining silvern spray
With ne'er a sound in the fount did play.

The wind was soft and wondrous still,
No living creature on that hill
But I alone. Across the curve
The horn'd moon with ne'er a swerve
From her course now swift and light advanced,
I stood and gazed at her entranced.

Suddenly she reached her height,
Bright flashed the star upon the right.
A swift and steady wind now came,
A silent, no'seless hurricane.
For a moment, all grew wondrous light,
The fountain now a marvelous sight.

The waters from their depths were stirred
And rose in forms and fancies wierd
Boiling and seething, they rose and fell.
Then, like a silver, clear-toned bell,
A chiming low came to mine ear
And calm and peace gave way to fear.

Then quiet grew the fount. The light
To the heavens returned and once more night
Reigned there. In the waters deep and clear
Blazing letters I saw appear,
And fearful, lest one I'd chance to lose,
I read the fates of the "Naughty-twos."

George Clark, our land's chief magistrate,
Himself a mighty name shall make;
His praise shall ring on every tongue,
Admired alike by the old and "De Young."
Jay Utley 'll uphold the right and moral
In many a clever editorial.

Rena Mosher, 'mid varied cares and joys,
Will found a private school for boys.
As foreign ambassador to Spain,
Will Eddy 'll make himself a name;
On sumptuous food and rare, sweet wine
With men of rank will daily dine.

Miss Wheeler beyond her fondest hope
Will with a German count elope
To reside in a castle on the Rhine.
Ethelyn Haines, in future time,
An actress fair of face, will captivate
All hearts—a most inviting fate.

Marshall Uhl, a diplomat
Will show great skill and wondrous tact.
His thoughts and sayings in after years
Will be recorded with words of seers.
George Berkey 'll use his wit and time
In children's books and nursery rhyme.

Carrie Hurt, the maid demure,
Fame and fortune to allure,
To Rome will go, a sculptress fair,
And astonish "Avery"-body there
By her clever works in "Clay,"
Of fate such is the way.

Within Australia's hidden heart,
Will Baldwin from the world depart
To return some day with riches great
Which he by raising sheep will make.
Ed. Richards will furniture design,
With patterns original and fine.

A masterpiece of highest art,
A work conceived in a noble heart,
Trixie Pierce will execute
And win a name of great repute.
To wed a noble, foreign lord,
Will be the fate of Ethel Ward.

Grace Barnes, a temperance lecturer,
Will men to higher lives adjure.
Constance Rourke to Vassar'll go,
While there will win full many a beau,
With her brilliant wit, and afterward
Will wed a well-known man from Harvard.

Away in England's famed resort,
Among noted men of great import,
Edward Barnard thro' life's long walks,
With shining, long and waving locks,
Will sing his tender, lyric songs
To admiring, grateful throngs.

Margaret Penney, in thrilling scenes
Will star—a queen of tragic queens
Lorraine Lockwood, sweet and shy,
Behind her fan will gently sigh,
And with glance and smile divine,
Lead many lovers to her shrine.

Along with Edison and with Bell,
Drollinger his name will spell;
A genius with powers on the unknown bent,
Will many wondrous things invent.
James Powers, a zealous guard of peace,
Will fill his post as chief of police.

Caring for the halt and lame,
Endeavoring to lighten pain,
Miss Newhouse 'll be a district nurse.
Sadie Forbes will fill her purse,
And try her skill and store of patience
In training canary birds to dance.

Helen Moseley to fame will rise,
Under these and foreign skies
Her paintings will exhibit. In Washington
We'll find Miss Lois Patterson,
A social queen most sought by all,
Delighting in many a soiree and ball.

In the mayor's private office,
Estella Sprague will much accomplish.
Her books will ever accurate be
And prove aright her competency.
The post-mistress in a country town
We'll see Miss Edith Robinson.

Anna DeVlieg life's storms will brave,
A bachelor maid sedate and grave,
With purpose grim to thwart all plans
Of Cupid. In distant, foreign lands
Bruff Olin will spend one-half the year,
And of his travels lecture here.

Beulah McCormick and Ollie Smith
Up the Rhine will take a trip,
And with German sailors, brave and bold,
Their future destinies will mould.
At Kalamazoo, still playing chess,
Claude Conger there will know no rest.

As a Wall street shark, Ray Spring
Will with his stocks great profits bring.
Aura Aten, with primer and rule,
Will seek to teach a country school.
Florence Meyers, with grace demure,
A red-cross nurse, all ills will cure.

Wade Tucker will show his genius rare,
Behind the footlights' friendly glare,
And delight an admiring audience,
'Mid glowing candles and rich incense.
Attended by his surpliced bands,
McMullen 'll intone his Latin chants.

George Johnson, with honest sympathy,
A great physician surely 'll be;
His skillful art and clever mind,
He'll lend to aid suff'ring mankind.
Glenn Sayers, next door, with caskets fine,
Will hang his undertaker's sign.

Julia Tusch at home 'll remain,
At her receptions entertain
Men of literary bent;
And also there a guest frequent
Bertha Hirth with brilliant wit
A second Mme. DeStael will sit.

With ladies fine and noble lords,
Blanche Fuller 'll visit foreign courts,
'Til a prince of Italy wins her heart,
And takes her from the world apart.
Carrie Ward at Sylvan Beach,
To little girls decorum 'll teach.

Josephine Heth will tour the states,
With great success will fill her dates,
In her lectures on physical culture.
The present, past and future
Miss Bennett in apartments swell,
With greatest certainty will tell.

Doris Wolfe will sonnets write,
And tender sentiments indite,
In many a lovely song and ode.
Hats and bonnets of the latest mode,
Will the Misses Johnston make and show
In fine apartments on Monroe.

Wilder Rich will place his name
Upon the lengthy roll of fame,
As discoverer of the northern pole.
A dealer in lumber, coke and coal,
Harry Hagens will wealth amass,
In honesty will all surpass.

In a seminary in Illinois,
To warn small maids 'gainst worthless boys,
Will be Miss DeVore's undying aim.
A sweetly sedate and sober dame,
Tillie Greve, by many blest
Will manager be of the C. O. S.

A grammar, modern and complete,
With rules for spelling most unique,
Will Nelson Maynard wisely write.
At home through many a happy night,
Carl Kusterer, the future sees
With romping children on his knees.

A reverend minister of St. Paul,
Will Burton Scoby astonish all
The world by his masterful eloquence.
To a grateful, inspired audience
Frank Rosencrans, the organist,
Will play from Mendelssohn and Liszt.

Miss Newnham, in her social reign,
When many lovers' hopes are slain,
Will meet a reverend, worthy wight
And end her days a minister's wife.
Helena Otte, at Madison Square,
Will be the prima donna there.

'Neath Cuba's sunny, southern sky,
Miss Saunders will her duties ply
In modern methods of kindergarten.
Clad in sables dark and marten,
Jeanette Volmari daily 'll ride,
A Russian legate's happy bride

In our state's superior court,
Judge Toren will the law support,
To all will justice fairly deal.
With basket, fishing-rod and reel,
Fred Works up north his time will pass
And cast for perch and shining bass.

Symphonies and sonatas grand
Will come from Roy Andrews' hand,
And men will flock from far to Rome
To hear the noted man perform.
Anna Workman will agent be
For fine supplies in photography.

As teacher in our own dear school,
Is Alice Godwin bound to rule,
She'll have the Senior session room
And all will happy be in June.
Charlotte Taylor abroad will travel
And write a famous German novel.

Stanley Morris, in far Japan,
A missionary in that land,
Aided by his wondrous voice
Will cause all sinners to rejoice.
Arthur Loucks will soon appear,
A foot-ball star without a peer.

Fine preserves and toothsome jell,
Jennie Rose will make and sell.
Miss Van Doorn of trees and plants
Will make a study; and in France
Her books will patent. Happy at home
With children ten, we'll find Miss Oom.

As a champion of basket ball,
Surviving many a hurt and fall,
Miss Schneider 'll stand without a peer.
Full of winning, sunny cheer,
Signe Petrie of gentle mind
In many hearts will be enshrined.

Carol Tipton and Georgia Davis,
With tender sympathetic grace,
Will tend to human ills and needs
And devout at vespers count their beads.
In local clubs and societies,
Coila Fox to heights will rise.

Isaac DePagter will make his way,
Into the battle's thickest fray,
Cool and brave on his warlike steed.
With many a noble thought and deed;
To raise poor souls from stations low,
To Africa will Whitney go.

The most delicious and tempting things,
With chafing dish in home evenings,
Nellie Miller will create.
Miss Shannessy will meet her fate,
In Newport's gay society,
And wed a notoriety.

In the future, Isaac Butterfield
Then as now, his powers 'll wield,
And please his listeners just as well,
When he his witty tales will tell,
To be a statesman, clever and wise,
His brother, Archibald, will rise.

To Munsey, Harper and McClure,
Miss Rutka 'll contribute literature.
Miss Schoemaker in a dancing school,
Will teach etiquette and social rule.
Christine Louwerse her degree,
Will take and be a noted, wise M. D.

A quiet picture of homely life,
An affectionate and devoted wife,
Will Olive Watson her duties ply,
With foot on the rocker and mending nigh.
Mary Wagner in the concert hall,
Will by her singing men enthral.

Away in India, 'tis said,
Etta Newman will three times wed.
George Reelman 'll make an air machine,
And travel far to lands unseen;
Full many wonders among the stars
He'll see, and make his home in Mars.

In that ancient German town,
Leipsic still in great renown:
Miss Shattuck 'll follow her career,
In music stand without a peer.
Miss Lacey with sunny cheering smile,
At home her leisure hours will wile.

Fred Rowe will practice dentistry,
And meet success and prosperity.
Versed in Hebrew, Sanscrit, Greek,
Judson Kolyn throughout the week,
Will make his students shake and quail,
Before that mighty man at Yale.

For a New York house of merchandise,
Miss Bale will travel with hooks and eyes.
Upon the political platform,
Miss Allen loud will rant and storm
As a woman suffragist, till happily
In Kansas City she'll mayor be.

Miss Bostwick, skilled in cooking art,
Many a delicious cake and tart
Will make. Miss Colson in the North,
Will run a fashionable resort.
Miss Kellog 'll wonderous harmonies,
Call forth from the piano keys.

Rosa Smith a farmer 'll wed,
In churning butter and making bread,
All other housewives will excel.
Christine Peterson a belle,
With paper, fan and cup of tea,
In Pekin's social ranks will be.

To the world of business will find,
Harry Whitman 'll turn his mind.
In wise and clever management
He'll stand supreme. Intent
On national and foreign scenes;
Story 'll edit magazines.

Jennie Murphy with sober mien,
With intellect alert and keen;
In an eastern college her post will fill,
As chief preceptress. With envied skill
Miss Nelson 'll make the finest lace,
Which on the market she will place.

Charles Wolcott among the noted comes,
A great reformer in the slums;
After long and careful search,
By a Gracious boon to school and church.
Will Edison a fortune reap,
By a new device to destroy sleep.

Kathleen Daniels another field,
Will choose and to her calling yield,
To teach the waifs of Hindustan.
Millie Styles will wisely plan
A public life, and law
Will practice in Arkansaw.

A polished gentleman of the world,
In gay society's giddy whirl;
Walter Moffat 'll be lionized,
And by fair ladies highly prized.
Stoddard More success will meet,
As a banker on Monroe street.

Ina Steel will chickens own,
And have a hennery at her home.
Miss Van Hess, so calm and cool,
Will teach small boys at Sunday School.
Lulu Johnson a patent will take,
On hair-pins, swell and up-to-date.

Boorhem will a scientist be,
Wondrous wise in chemistry.
Herbert Riley as a historian, ranks
In thrilling tales of the far-famed "Frank"-s.
Clyde Smedley 'll run a dry goods store,
With laces, satins, silks galore.

Pearl Brown, a charming lady 'll be,
And have of lovers a score and three;
In their attentions she'll rejoice,
At last to wed her only choice.
Esther Whiteman will invest,
In an olive grove in the sunny west.

Miss Powers, serene and sweetly calm,
To many souls a soothing balm
Will bring, by her writings pure and true,
To her a world's applause is due.
Coiffures of the very latest style,
Elvie Cook will make worth while.

Over the waters in western lands,
Frank Ulrich 'll employ his busy hands.
Till one June morn 'twixt nine and ten,
His bride he 'll wed. Her name we ken.
Howard Morton, mild and wary,
Will teach in a ladies' seminary.

Tibbs awaits a noble fate,
And many a deeply suff'ring mate
Will bless his patent invalid chair.
Considered wise and a genius rare;
Houseman in the Philippines,
Will glory still in magazines.

Miss Roberts photographs will take,
And with her camera money make.
A gentle governess will be
Our class-mate, Pauline Kuemmerle;
Her youthful charges with love she 'll rule,
And the rod 'll be idle in her school.

'Mid time-worn books in a dusty den,
Roy Tucker 'll hide himself from men.
In search of wisdom's truth,
In a fancy, oriental booth.
Carry Smith at charity fairs,
Will sell her dainty, foreign wares.

Miss Borneman will travel far
To play for emperor and the czar;
A noted queen of the ivory keys,
A lady of leisure and of ease.
Florence Bertsch with time and funds,
Will aid the children of the slums.

George Clay will yield to his ambition,
A man of push, a politician;
In Congress he will find a place,
And honors win in the nation's race.
Elmer McConnell success will meet,
Upon the race course with horses fleet.

Covers for books and magazines,
With clever sketch and dainty scenes,
Miss Vinkemulder will design.
Ina Dennis will often dine,
With men of highest social ranks,
As guest of honor away in France.

Arthur Davidson, his work
Of doing good will never shirk;
And many souls from misery raise,
By Keelley cure in future days.
Charles Miller will deal in tombstones fine,
With a complete and splendid line.

To study Shakespeare, Keats and Scott,
Will be Miss Curtiss' destined lot.
While at her chosen shrine and bower,
Miss Keyes will wile full many an hour;
And like Cecilia her listeners thrill,
And raise them higher by her skill.

Ethel Ingram 'll preach the right,
In earnest endeavor day and night;
A staid, Salvation Army lass,
Through our streets will daily pass.
Bertha Foote will lions tame,
And money make and world-wide fame.

A busy maid at her private desk,
Miss Brown will write for the Evening Press.
Miss Wall as clever as any book,
Will teach small maids to sew and cook.
As caterer with new ideas,
Will Miss DeBlonde the public please.

But sudden, while intent I gazed,
Upon those words which fiery blazed
Like witches' lamps in the midnight black,
In times and centuries far back;
The crimson star with the crescent moon,
Vanished into aetherial gloom.

The fount no louder did my will,
But through the silence, calm and still,
A softly whispering voice, I seemed
To hear: "These things which thou hast dreamed,
Do thou to mortal men impart,
And naught conceal within thy heart."

Thus, I've obeyed the spirit's word,
And told to each what I have heard,
Their destinies for woe or weal,
As the magic waters did reveal;
And though we travel pathways new;
We'll still be the Class of Naughty-two.

VIOLET D. HART.

LINES TO MY PONY.



Oh, pony,—tried and trusted steed
Who always met my every need,
Thou, to whom I always turn,
Whose loss now makes my heart to yearn,—
I praise thee for thy two years' life,
For oft' have you helped me in the strife,
Lifting me over each rocky place
And always willing to give me a brace.
But, when Miss Jones with delicate ear
At my translation, your neigh did hear;—
The sorrow and sadness make my head reel,
She told me to shoot you and get a 'mobile.

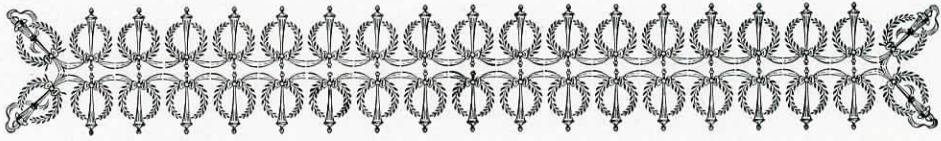
(Author unknown—perhaps Barnard.)

JUNIOR CLASS





MISS AGNES R. GINN



Miss Agnes R. Ginn.



MISS AGNES R. GINN was born in Hartford, Connecticut, where her father was principal of the High School. Later her parents moved to Stamford; where, for the next five years, Miss Ginn studied under their tuition. In 1879 she was graduated from the Classical School of Syracuse, and while there took the first year at Vassar, intending to complete her education at that college. Miss Ginn taught for several years in the Classical School, and then accepted a position as governess in the family of Mrs. Josiah Caldwell, in Bristol, Rhode Island; but went later with them to Cuba and the Adirondacks. Miss Ginn's health becoming poor, she joined her parents at Hillsdale, Michigan. From Hillsdale, Miss Ginn came to Grand Rapids to accept the position she still holds, as teacher of French and English, in the High School.

After Miss James' promotion to the Senior Session Room, Miss Ginn was chosen to fill her place as teacher of the Junior Session Room. No person with better ability could have been found to take charge of this room.

Junior Class.



OFFICERS:

MILLARD SEYMOUR,	-	-	-	PRESIDENT
DON McAFEE,	-	-	-	VICE-PRESIDENT
HAZEL AMBERG,	-	-	-	SECRETARY
ALFRED TREADWAY,	-	-	-	TREASURER
COURTNEY McINTIRE,	-	-	-	SERGEANT-AT-ARMS

COMMITTEES:

EXECUTIVE.

Chairman, CARL PALMER,
ROY PEEBLES,
MARTIN DAANE,
LEON HEWITT,
CORNELIA SWEET,
MABEL THOMPSON,
ERNEST DALES,
CORNELIA FISHER,
EDWIN KALMBACH.

INVITATION.

Chairman, ARTHUR DAVIDSON,
PHILIP RAGUEL,
RUTH STEGLICH,
CHARLES WHITE,
HATTIE KECK,
MELVIN BALDWIN,
CHARLES HILLIKER,
GERTRUDE DAVEY,
LEE SANFORD.

ENTERTAINMENT.

Chairman, FRANCIS RANIVILLE,
BESSIE CRIPPEN,
SHELBY SCHURTZ,
GEORGIA STANSBURY,
ABRAM HORNER,
CARL TANNEWITZ,
ELBERTHA ROELOFS,
HELEN CROMWELL,
WINIFRED CAMP.

PIN.

Chairman, MARGARET PALMER,
LEWIS NEAHR,
GRACE LOGIE,
FRANK ELSON,
AMANDA KILSTROM,
ADOLPH SCHEIMAN,
HAZEL DAVIDSON,
WALLACE OSBORNE,
JOHN OTTE.

COLOR.

Chairman, SADIE STILES,
DEWEY BLOKSMA,
ANNE GRAVES,
HAROLD SHARPE,
FLORA DONALDSON,
CLIFFORD PAIGE,
ALTA HAYWARD,
BENJAMIN SPARKS,
FRED ZINSER.

YELL.

Chairman, CLAY BOSWORTH,
CORNELIUS DUTMERS,
EDYTH DYKEMA,
HENRY FORD,
GLEN RICHARDS,
EDA THAYER,
ARMEN KIRKIAN,
WILL DOSKER,
EVA RAYNIER.

MOTTO.

Chairman, WILLIAM MULHERN,
MAUD CAMP,
SAMUEL WALKER,
MAMIE FRANK,
CHAS. LILLIE,
CHARLOTTE BLICKLEY,
JENNIE ROLAND,
LOUIS DIAMOND,
HELEN SKEELS.

DECORATION.

Chairman, ARTHUR CHURCH,
OLGA GOETZ,
WILL BENJAMIN,
MABEL AUGUR,
CHAS. FOOTE,
MAUDE SWANSON,
WILL DAMONS,
RUTH GOODRICH,
SHELBY RACE,
FLORENCE CARTWRIGHT,
MARTIN HEERES.

Junior Class 1903.



Joseph C. Allen
Hazel G. Amberg
Louise Ansgorge
Alma M. Appley
Mabel B. Augur
William E. Avery
Vivian May Bacon
Clara Bess Bennett
Vera A. Bennett
Charlotte Blickley
Dewey Blocksma
Mamie Blocksma
Helen Borneman
Clay Bosworth
Willoughby Boughton
Mary Eliza Braden
Rosa Brandy
Ethel Alice Brown
Ola M. Buck
Helen E. Burns
Edith Lense Butler
Delight Boise Butts
Maude Mae Camp
Winifred Bell Camp
Grace Cawthorne
Helen Chamberlain
Arthur Church
George Y. Clark
Lila M. Colwell
Audrey B. Colvin
Pearl Cooper
Archie Fountain Corwin
Merle V. Coverstone
June Cowlishaw
Bessie M. Crippen
Alice B. Cummings
Martin Daane
Hazel G. Davidson
Gertrude Irene Davey
Maude Dennis
Anna De Pree
Anna M. DeVine
Anna DeYoung
Louis Diamond
Flora A. Donaldson
Gertrude D'ooge
Will Dosker

H. Monroe Dunham
George Duthie
Cornelius Dutmers
Grace Dunaven
Edith M. Dykema
Stuart Dykema
Sadie Dyke
Harold Eastman
Frank W. Elson
Gertrude Ensign
Bert Ferris
Cornelia F. Fisher
Chandler Lee Ford
Henry E. Ford
Viva Lenore Flaherty
Mamie Frank
Jessie Franklin
Arletta Geib
Olga L. Goetz
Annie D. Graves
Florence Groner
Maude Gunther
Lillah Haggerty
Bessie Hamilton
Herman Hannick
Fred S. Hart
George Berry Heaton
Martin Heeres
Leon M. Hewitt
Fred William Hurt
Celeste Higgins
Charles Hilliker
Abram B. Horner
Amy Hosford
Harry L. Howard
Harry Albertus Hoxie
George Kahn
Hattie M. Keck
Edla Sophia Keyes
Jessie L. Kemp
Ethel Kimerley
John Klasse
Edwin R. Kalmbach
Merton B. Knettles
Fannie Lamberts
Ida Belle Levy

Charles H. Lillie
Louise Luik
Grace L. Logie
Louise Carrie Logie
Harriet Lowing
Anna Matthews
Zaide Markham
P. Bert Markoff
Hazel Marvin
Laura Madge Mason
Jessie Maxwell
Charlie E. McCrath
William McNabb
Courtney S. McIntyre
Nina Louise Mercer
Ina Mickam
Josephine Middleton
Jessie Moore
L. Beatrice Morton
William Mulhern
Lottie V. Nebel
Laura Newnham
Rose Newman
Louis Edwin Neahr
John Otte
Clifford Paige
Carl Palmer
Margaret Palmer
Anna Parker
Helen Elizabeth Parker
A. Roy Peebles
Mary Peterson
Ethel C. Phelps
Harry J. Proctor
Henry Rademaker
Philip Smith Raiguel
Shelby Race
Francis F. Raniville
Marion H. Ray
Eva Reynier
Maud Reaveley
Wayne R. Rice
Glenn E. Richards
Alice Richmond
Jennie Rowland
Ebertha Roelofs

Margaret Royce
L. Earl Ruffe
Rena Rykert
Lee Sanford
Will Seamans
Adolph Schieman
Eda Schaefer
Shelby B. Schurtz
Millard Rich Seymour
Harold C. Sharpe
Delia Carolin Sacia
Willard Barnhart Scott
John Simmers
Ada Shaw
Grace Louise Simmons
Edythe Smith
Harry Snyder
Benjamin T. Sparks
William Spooner
Ruth E. Steglich
Blythe R. Steeman
Nellie D. Steketee
Edwin J. Steinberg
Sadie A. Stiles
Edith Story
Maud Swanson
Cornelia Sweet
Elizabeth Taylor
Mabel F. Thompson
Clyde Tompkins
Alfred Alanson Treadway
Winifred Tuttle
Stephen Van Manen
Leonard Van der Schoor
David Van Strien
Jessie Lamonter Wagner
Samuel Austin Walker
Charles Gibson White
Pearl White
Mabel M. Wendriener
John Wieland
Bessie Williams
Elvira Wing
Irving A. Woodruff
Etta A. Wright
Jeanette Sophia Zylman

Sophomore Class 1904.



A. LeGrande Albee	John A. De Vlieger	Frank Knappen	Rilla Sanford
Mabel Allen	Ruth Dunben	Marion Kolyu	L. Mary Sawyer
Eugenia Vera Amsden	George Dykhousc	May Ruth Kunz	Emma Schneider
Alice E. Atkins	Ruby Eddy	Edward Laubenthal	Evelyn Schrouder
James Barrett	Bessie Erl	Lois Lillie	Orilla Shattuck
Alice Baxter	Alice Evans	Ethel Livingston	Lena Simon
Pearl Beattie	Ralph Fleming	Maud Locher	Douglas Sinclair
Pearl Irene Barber	Neva Fox	Juliet M. Lowes	Anna Smith
Ray M. Beldon	Wallace French	Edith Luton	Florence Smith
Bessie Bettinghouse	Neva Frey	John MacDonald	William Smith
Lillian L. Birt	Phoebe Frost	Mabel Maher	William Smith
Frank Bletcher	Daisy Findlater	James Marks	Ethelyn Spoon
Willoughby Boughton	Mabel Galbraith	Alex Martin	Harold Spooner
Grace Brink	Cora Greene	Blanche Mainzer	Earle Sproat
Lillian Brown	Nellie Greenway	A. Belle McNabb	Bessie Steed
Ethel Bucher	Olive Grinnell	Murl McIntyre	Edna Stevens
Eveline Buech	Lewis Griswold	Ralph McMillan	Elsie Storry
Wallace Bunnell	Vivian Guild	John McPherson	Peter Struik
Gertrude Burns	Mary Haage	Frank Miller	Jacob Tangenberg
Helen Burton	Lotta Haire	Roy Miller	Zoe Tuttle
Clyde C. Buttrick	Kingsley Hall	Freda Miller	Herbert Tolance
Charlotte Calkins	Sherwood Hall, Jr.	Ray Moore	Gladys Tomlinson
Frances Case	Sherman Hanna	William A. Morton	Jeanette Van de Erve
Sophie E. Coats	Earle Harper	Elin L. Mosher	Egbert Vanderveen
Julian Chubb	Pysl Harper	Georgia Morrison	Jeanette Vanderveld
Bessie Clapperton	Delia Hazeltine	George Munro	Harry Van Otteren
Anna M. Clary	Lucy Higbee	Catharine Olin	M. Van Campen
Jennie Cnossen	Ila Higgins	Earle Parker	Josie Vose
Zoe Coleman	Lillian Higgins.	Flora Peebles	Gerrit Waalkesy
H. Fred Collins	Emma Hobart	Roy Poole	Arthur Waite
Iva Cook	Oneta Hodges	Chauncey Potts	Clyde Waite
Mabel Copson	Marion Holt	Hazel Radcliffe	Helen Wanty
Ida M. Corwin	Sheldon Holt	Exene Reed	Iva Wardhouse
Myrtle Corey	Kate Horton	Foster Renwick	Ida Waters
Roy Cummings	Harold Horton	Beatrice Richmond	Ethel Weller
Ethel Cryder	Arthur Rood Hurst	Charity Rice	Louis B. Weston
Carroll Daniels	Timothy Johnson	Mamie Riegel	Lillie Williams
Olive Davidson	Park Johnston	George Roberts	Ruth Wilmot
Helen Dayrell	Brace Kelly	Nellie Roller	Mabel Wolcott
Bernard De Graaf	Hazel Ketcham	Milton Rosenfield	Estelle Wolf
Ethel Dennis	Lillie Kettner	Leo Sandler	Lillian Werner
Jessie H. Denel	Verner Kitson	Susie Sargeant	Clara Yerex

freshman Class 1905.



Paul Adrians	George Clark	Nellie Haire	Adelaide Marcellus
Martha Alexander	Mae Clark	Lotta Halladay	Goldie Mardheim
Imogene Aldrich	Ralph Cleugh	Jennie Hards	Florence Masten
Georgianna Alford	Bishop Clapp	Claude Haitson	Katherine Matheson
Josephine Aller	Wycliffe L. Clark	Helen Hawkins	Mary E. McCormack
Francis Ames	Fay Coffman	Bessie Hall	Mattie McCormick
Cecile Astrom	Nina Coggeshall	Eva Halloran	D. McNabb
Herbert Atkinson	Aaron B. Cole	Lewis W. Heath	Louise Mead
Forester Avery	Mamie Combs	Fred Hensen	Teresa Mehen
Jessie Averill	Leah Cornwell	Audley Hewitt	Anna H. Meyering
Florence Ayers	Arthur Crabbe	Harry Heeres	Dudley Miller
Ema Bailey	Alice Cudahy	John Heydenburg	Martha L. Mohler
George Bailey	John Cummings	Blanche Hilliker	Effie Morrill
Roxana Bailey	Ruby Cunningham	Frieda Hirschberg	Martie Morrill
Albert Baisch	Michell Danforth	George Hill	Georgie Morrison
Thomas Barstow	Clara Davis	Nora Hovey	Boyce K. Muir
Harry Bartholomew	Leona De Bott	Alice Holmes	Albertine Munson
Harold Baxter	Arthur De Graaf	Anna Hornstra	Charlotte Nearh
Fred Baxter	Jay DeGraaf	Irene R. Hoult	Marie Nelson
Howard F. Baxter	Louis DeMaaga	Ellen Howard	Dick van Oostenbrugge
Mabel Beamer	John Denison	Eva Huher	Charles Pitts
Horace Beecher	Eva Dennis	Henry Hudson	Beryl Powers
Norman Beecher	Alice Dewitt	Maud E. Jaques	Edith Pratt
Leonard Beekman	Leo Doty	Roy Jepson	Lena Rexford
Welles Bedford	Mamie Doty	Anna B. Johns	Gerard Ringold
Lily Bennett	Gerald Doty	Nicholas Johnson	Fred Rowson
Pearl Berry	Marie Dregge	Carrie Johnston	John Rovingh
Cora Bertsch	John A. Dykstra	Muriel Johnston	Bessie Sayles
Alexander Bieleske	George Eble	Valda Johnston	Karl J. Shinkman
Morris Bind	Elsie Edwards	Jean Jones	Henrietta Sonnema
Charlie Blackford	Hazel Elliot	Chester A. Katajczak	Frank L. Spencer
Anna Blocksma	William Ellis	Vere Keeler	Frank J. Smith
Isabella Blocklock	Grace Elmer	Loyd Keelhorn	Luella Smith
Jay Blodgett	George Evans	Hazel Kellogg	Urith Smith
Wm Borendame	Edith F. Fairman	Jay Kievit	Edward Stewan
Jessie Bowen	Rebecca Fahringer	Edith Kirkwood	Hazel Stiles
Donna Brakeman	Getrude Fanth	John W. Knecht	Luella Thomson
Harry Brandon	Abbie Fisher	Ethel Knox	Alice Thornton
George Brandt	Morris Fisher	Margaret Kotvis	Louise Towne
Joseph Brink	Isabella Flord	Marie Kruse	Thomas Touman
Lula Brooks	John Ford	Mamie Lacey	William Traphagen
Eva Braunam	Claire Fox	Adrian Lamberts	Bessie Van Dam
G A. Brower	Frank Foote	Clarence Lane	Marina Vanderveen
Bessie V. Brown	Lee Fry	Florence LeMaine	Maude Verboom
Frances Burling	Albert Fuller	Hazel Lemon	Edith Walker
Edward Burch	Roe Fuller	Robson Ledeboer	Lillian Walters
Edna Butler	Herbert Gage	Henry Lewis	Joseph Welton
Pearl E. Camp	Helen Gill	Julia Livingston	Julia V. Whalen
Helen Carlisle	Merritt Gill	Charles Logan	Arlene Whittemore
Clinton Carpenter	William Gohlke	Ellura Lozier	Beatrice I. Williams
Norman Chamberlin	Edward Goebel	Charles Luce	Mildred Williams
Carl Chapin	Stephen Goodman	George Macauley	Beatrice Wilson
Jessie Chapman	Hazel Grady	Beatrice Maxwell	Mark Wright
Julia Christie	LaVerne Haire	Louis de Maagel	Lyle Wisly



OLIVE WATSON



HELEN WHEELER



BURTON SCOPY



GARRIE WARD



CARL KUSTERER



LURAINÉ LOCKWOOD



MARSHALL UHL



ROSA SMITH



WILL EDDY

WHEN THEIR FEET WERE SMALL



Gamma Delta Psi Fraternity.

Founded at Hillhouse High School, New Haven, Conn., 1879.

Colors: Silver and Garnet.



Chapter Roll.

ALPHA	.	.	Hillhouse High School, New Haven, Connecticut. Founded 1879.
BETA	.	.	DeVeaux College, Suspension Bridge, New York. Chartered 1884.
GAMMA	.	.	Military and Naval Academy, Oxford, Massachusetts. Chartered 1885.
DELTA	.	.	Central High School, Grand Rapids, Michigan. Chartered 1886.
EPSILON	.	.	Bridgeport High School, Bridgeport, Connecticut. Chartered 1886.
ZETA	.	.	Washington High School, Washington, District of Columbia. Chartered 1891.
ETA	.	.	Brooklyn Boys' High School, Brooklyn, New York. Chartered 1893.
THETA	.	.	Hartford High School, Hartford, Connecticut. Chartered 1894.
IOTA	.	.	Detroit High School, Detroit, Michigan. Chartered 1895.
KAPPA	.	.	Springfield High School, Springfield, Massachusetts. Chartered 1896.
LAMBDA	.	.	New Bedford High School, New Bedford, Massachusetts. Chartered 1897.
MU	.	.	Berkeley High School, New York City, New York. Chartered 1898.
NU	.	.	Brookline Academy, Boston, Massachusetts. Chartered 1898.

Gamma Delta Psi.

DELTA CHAPTER.



Active Members.

1902

GEORGE PHELPS BERKEY	JAMES NELSON MAYNARD
GEORGE FRANCIS CLAY	PARKE HATHAWAY McMULLEN
EUGENE BERNARD HOUSEMAN	STODDARD STEVENS MORE
GEORGE KINNEY JOHNSON	STANLEY DELTA MORRIS
MARSHALL MORTIMER UHL	

1903

ARTHUR CHARLES CHURCH	LEWIS EDWIN NEHR
ABRAM BOYNTON HORNER	CARL PELTON PALMER
JOHN MILTON METHEANY	HAROLD CASEWELL SHARPE
ALFRED ALANSON TREADWAY	

1904

STUART LEONARD DYKEMA

Mu Delta Sigma fraternity.

Founded at Central High School, Grand Rapids, Michigan, 1884.

Colors: Green and Gold.



Chapter Roll.

ALPHA	Central High School, Grand Rapids, Michigan. Founded 1884.
BETA	Kalamazoo High School, Kalamazoo, Michigan. Chartered 1894.
GAMMA	Milwaukee High School, Milwaukee, Wisconsin. Chartered 1895.
DELTA	Albany High School, Albany, New York. Chartered 1895.
EPSILON	Armour Scientific Academy, Chicago, Illinois. Chartered 1897.
ZETA	West Side High School, Milwaukee, Wisconsin. Chartered 1898.
ETA	Milwaukee Academy, Milwaukee, Wisconsin. Chartered 1898.
THETA	Muskegon High School, Muskegon, Michigan. Chartered 1899.
IOTA	Madison High School, Madison, Wisconsin. Chartered 1899.
KAPPA	Hudson High School, Hudson-on-Hudson, New York. Chartered 1899.



Urka Philo.

Mu Delta Sigma.

ALPHA CHAPTER.



Active Members.

1902

SHELBY MARTIN BOORHEM HOWARD J. MORTON
HAROLD CLARK BALDWIN HENRY HOAG TIBBS
CARL CHRISTOPHER KUSTERER J. WADE TUCKER
JAY DEWITT UTLEY, JR.

1903

ARTHUR JOHN DAVIDSON PHILIP SMITH RAIGUEL
CHARLES FENTON HILLIKER FRANCIS FELIX RANIVILLE
LEON MURL HEWITT MILLARD RICH SEYMOUR
COURTNEY SMITH MCINTYRE SAMUEL AUSTIN WALKER
WILLIAM ALBERT MULHERN CHARLES GIBSON WHITE

1904

HARRY FALES AMSDEN JOHN CARL KENNING
EDWARD EARLE ALLEN ERNEST ALFRED SHELLMAN
THOMAS EDWARD WYKES, JR.

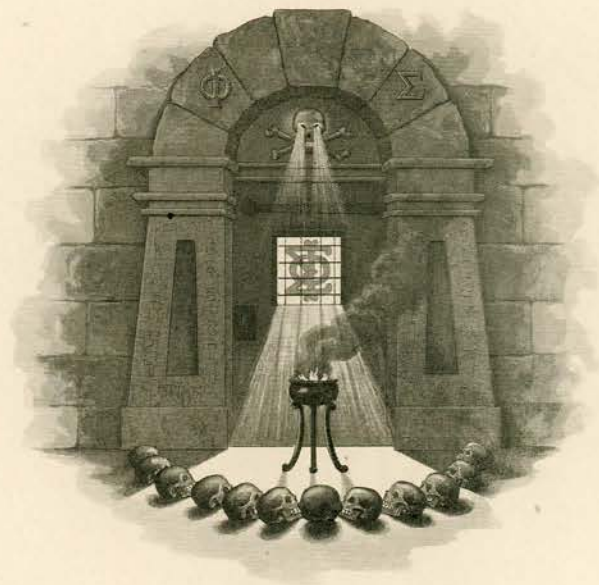
Phi Sigma Fraternity.

Founded at Central High School, Grand Rapids, Michigan, 1895.
Colors: Turquoise, Gold and Pearl.



Chapter Roll.

ALPHA	Central High School, Grand Rapids, Michigan. Founded 1895.
BETA	Detroit Central High School, Detroit, Michigan. Chartered 1895.
GAMMA	Kansas City High School, Kansas City, Missouri. Chartered 1896.
DELTA	Lake View High School, Chicago, Illinois. Chartered 1896.
EPSILON	Oakland High School, Oakland, California. Chartered 1897.
ZETA	San Francisco Polytechnic High School, Chartered 1897. San Francisco, California.
ETA	Hyde Park High School, Chicago, Illinois. Chartered 1897.
THETA	Mastin Park High School, Buffalo, New York. Chartered 1898.
IOTA	Los Angeles High School, Los Angeles, California. Chartered 1898.
KAPPA	Belmont High School, Belmont, California. Chartered 1900.
LAMBDA	Seattle High School, Seattle, Washington. Chartered 1901.



Irreka. Philo.

Phi Sigma.

ALPHA CHAPTER.



Active Members.

1902

GRAYDON ROY ANDREW

WILLIAM EPHRAIM EDDY

JAMES WILLIAM POWERS

JOHN HERBERT RILEY

1903

DEWEY BLOCKSMA

GEORGE B. EATON

CARL ISSAC CAMPBELL

ALVIN ROY PEBBLES

HARRY MONROE DUNHAM

ADOLPH PHILLIP SCHEIMAN

MERLE COVERSTONE

BENJAMIN FRANKLIN SPARKS

1904

HARVEY F. BRUNER

PARKE JOHNSON

FLOYD THOMAS TURNER

LOUIS B. WESTON

1905

JAMES E. KEEGAN

Gamma Delta Tau Sorority.

Founded at Kalamazoo High School, Kalamazoo, Michigan, 1897.

Colors: Gold and White.



Chapter Roll.

ALPHA	.	.	Kalamazoo High School, Kalamazoo, Michigan.
BETA	.	.	Jackson High School, Jackson, Michigan.
GAMMA	.	.	Battle Creek High School, Battle Creek, Michigan.
DELTA	.	.	Washington High School, Washington, District of Columbia.
EPSILON	.	.	Central High School, Grand Rapids, Michigan.
ZETA	.	.	Fort Wayne High School, Fort Wayne, Indiana.



WRIGHT, MAY & CO.
CHICAGO, ILL.

Gamma Delta Tau.

EPSILON CHAPTER.



Honorary Members.

MRS. CORNELIA HULST MISS AGNES R. GINN
MISS MAUD FULLER MISS S. HELEN ALLEN
MISS ESTHER MARSH

Active Members.

1901

HELEN C. BRADFIELD LELIA VOLLAND

1902

BLANCHE MARGARET FULLER CARRIE ROBINSON WARD
OLIVE JESSIE WATSON

1903

HAZEL GENEVIEVE AMBERG CORNELIA FLORENCE FISHER
MARGARET MARION CARLILE GRACE LOUISE LOGIE
HAZEL GERTRUDE DAVIDSON MARGARET HINS DILL PALMER
RUTH ELIZABETH STEGLICH CORNELIA VAN RENSSELAER SWEET
PEARL EVELYN WHITE

1904

JESSIE LAMONTE WAGNER.

Pledged Members.



Au Delta Sigma.

LEGRAND ALBEE
MELVIN BALDWIN
JAMES BARRETT
ALDRICH BLAKE
GEORGE BRANDT
WYCLIFFE CLARK
CARL CHAPIN

EARNEST DALES
MORRIS FISHER
ARTHUR FORD
GEORGE HARRIS
AUDLEY HEWITT
GEORGE HILL
BERT MARKOFF

WALTER PALMER
FRED PANTLIND
FRANK SPENSER
WILLIAM UTLEY
FREDERIC VOORHEIS
RAYMOND WEST
ROBERT WOODCOCK

Gamma Delta Psi.

FORRESTER AVERY
HOWARD BAXTER
HORACE BEECHER
NORMAN BEECHER
RALPH BULKELY
THOMAS CARLILE
EUGENE CHENEY

JOHN DENNISON
CLARENCE ENGLISH
ROE FULLER
STEPHEN GOODMAN
SHERWOOD HALL
LOUIS HEATH
CHESTER IDEMA

DUNCAN McNABB
LANSING RATHBUN
DOUGLASS SINCLAIR
ESPY STANTON
HAROLD STEKETEE
LYLE WHITE
IRVING QUIMBY

Phi Sigma.

ELMER BLICKLEY
FRED COLLINS
FRANK FULTON
EARL HARPER
PYRL HARPER

VALDA JOHNSON
BRACE KELLY
ROY MILLER
VICTOR KRAUSE

DELOS ROSE
FRANK SMITH
IRLAND SIMMONS
WILLIAM SPOONER
CARL YALE

Gamma Delta Tau.

ALICE BAXTER
JOSEPHINE MACBRIDE
EMILY BROWER
CHARLOTTE CALKINS

SARAH CONLON
MABEL DUNN
KATHERINE GOODMAN
OLIVE GRINNELL

DELIA HAZELTINE
ELLEN HOWARD
ISABEL McNABB
ESTELLE WOLF

BRANDS WITH SIZES



RESERVE SIZES.

Mu Delta Sigma.

ANNUAL BANQUET FOR THE PLEDGED MEMBERS,
DECEMBER 26, 1901.



Toasts.

DR. HARRY WATSON, Toastmaster

Active Chapter,	CARL KUSTERER, '02
	" Well will I do it, sir."	
Reminiscences,	HARRY L. CRESWELL, '87
	" Why do you look on me? "	
Congratulations,	ARTHUR H. VANDENBERG, '00
	" Give me your hand, sir."	
Athletics in the Frat,	ARTHUR DAVIDSON, '02
	" My legs do better understand me."	
The Social Frat,	"Dad" Smith, '98
	" He was provided to do us good."	
Actives to Be,	FRANCIS RANVILLE, '03
	" You have my good will to have mine own good fortunes."	
Impromptu,	_____
	" Here's to his lordship now."	
In Days of Old,	BERT BARTLETT, '96
	" I am sure care's an enemy to life."	
Music,	MU DELTA SIGMA ORCHESTRA
	" Would you have a love song, or a song of good life? "	

Phi Sigma.

SEVENTH ANNUAL BANQUET OF ALPHA CHAPTER, IN HONOR OF ITS ALUMNI,
THE LIVINGSTON, APRIL 18, 1902.



Toasts.

MAYNARD A. GUEST, '98, Toastmaster

JAY W. BROOKS, '99, Choragus

"And the best of all ways to lengthen our days
Is to steal a few hours from night.

Introductory,	THE TOASTMASTER
					Opening of a Chestnut Burr.	
Song,	THE FRATERNITY
					The Gold, the Pearl, and Turquoise Blue.	
Grand Chapter,	ROBT. K. WALTON, '00
					"Shylock, do you hear?"	
Violin Solo,	HARRY C. HAGY, '01
					"Aint dat a shame?"	
Alpha, First of an Honored Line,	GLEN H. DOWNS, '02
					"O, lovely apparition sent to be A moment's ornament."	
Selection,	PHI SIGMA MANDOLIN QUARTET
					"Ye torturers with your twisted strings, appear!"	
Short, but Sweet,	FLOYD G. WHITE, '00
					"Twice Told Tales."	
Our Fraternity,	W. EARLE MULLIKEN, Ex.-'98
					"And eloquence fairly <i>boils</i> from his lips."	
Song,	THE FRATERNITY
Matrimony,	E. ALLEN PHILLIPS, '96
					"Alas, poor Yorrick!"	
Storiettes,	HARRY E. RODGERS, '97
					"Make him eat his words, he's left naught else."	
Selection,	PHI SIGMA MANDOLIN QUARTET
					Assisted by GEORGE MERCER.	

Phi Sigma.

ANNUAL BANQUET IN HONOR OF PLEDGED MEMBERS OF ALPHA CHAPTER,
MILITARY CLUB, FRIDAY, FEBRUARY 21, 1902.



Toasts.

WILLIAM EDDY, '02, Toastmaster

"I warrant thee, Claudio, the time shall not go dully by us."

- The Active Chapter, MUNROE DUNHAM, '03
"Cicero is dead, Demosthenes is dead, so on—Dunham we'll call.
- Selection, PHI SIGMA MANDOLIN QUARTET
PAUL WESTON, ORRIN WARD, LOUIS WESTON AND MAYNARD GUEST.
- A Little of the Mysteries, JAMES POWERS, '03
"A solemn sacrifice performed in state."
- Violin Solo, HARRY C. HAGY, '01
- Our Pledged Chapter, HARVEY BRUNER, '04
"From strength today to promise in the future."
- Selection, PHI SIGMA MANDOLIN QUARTET
- Our Future Hopes, S. B. CONGER, '96
"These things are in the future."
- Violin Duet, PYRL AND EARL HARPER, '04
- The Ladies, A. ROY PEEBLES, '03
"Drink ye to her that each loves best."
- Song, THE FRATERNITY
"Is this the promised end?"

Gamma Delta Psi.

EIGHTH ANNUAL BANQUET OF DELTA CHAPTER,
LAKESIDE CLUB, DECEMBER 26, 1901.



Toasts.

W. HUBERT WOOD, '88, Toastmaster

EUGENE C. WORDEN, '94, Choragus

A Voice from the Old World,	LOUIS C. COVELL, '93
Music,	Γ Δ Ψ MANDOLIN CLUB
From the Active Chapter,	MARSHALL M. UHL, '02
Song,	LEONARD VERDIER, '95
Γ Δ Ψ in Matrimony,	CHAS. G. WATKINS, '95
Music,	Γ Δ Ψ MANDOLIN CLUB
Γ Δ Ψ in Bachelordom,	F. K. HEATH, '95
Music,	Γ Δ Ψ MANDOLIN CLUB
Our Last Convention,	GEO. J. RAYMOND, '01
Athletic (?) Heart Trouble,	MORRIS H. STIMSON, '00
Instrumental Number	
'Way Down East,	S. EUGENE OSGOOD, '98
Γ Δ Ψ in the Ring,	"KID" MCCOY, '00

Gamma Delta Psi.

DELTA CHAPTER ANNUAL DINNER IN HONOR OF PLEDGED MEMBERS,
MILITARY CLUB, JANUARY 31, 1902.



Toasts.

WM. LAURENCE MORLEY, '00, Toastmaster

WM. LOGIE, '01, Choragus

Fratres in Ludo,	MARSHALL M. UHL, '02
	"O, here's to Gamma Delta Psi, boys."	
The Infant Class,	EUGENE CHENEY, '04
	"Here's to every future goat."	
Music (?).	Γ Δ Ψ MANDOLIN CLUB
The Helios,	EUGENE B. HOUSEMAN, '02
	"The band of renown, both in sword and in pen."	
Piano Solo,	DOUGLAS SINCLAIR, '05
What Γ Δ Ψ means to a business man,	W. HUBERT WOOD, '88
	"When in future years we want a house, boys."	
Song,	LEONARD D. VERDIER, '95
Athletics,	H. GUY B. DAYRELL, '98
	"That's where we play the hero's part."	
Our Γ Δ Ψ Sisters,	J. NELSON MAYNARD, '02
	"Let's drink once again to our ladies, so dear."	
Song,	THE FRATERNITY

Gamma Delta Tau.

ANNUAL DINNER GIVEN IN HONOR OF THE PLEDGED MEMBERS OF EPSILON CHAPTER,
GAMMA DELTA TAU SORORITY AT THE KENT COUNTRY CLUB,
FRIDAY EVENING, MAY 9, 1902.



Toasts.

BLANCHE MARGARET FULLER, '02, Toastmistress.

"Cheerful looks make every dish a feast
And 'tis that crowns a welcome."

"The Active Chapter," CARRIE ROBINSON WARD, '02

"Friendship's ties are always strong
And Brothers' ties are dear,
But none so strong in all the world
As binds each Sister here."

Violin Solo, KATHERINE CONLON, '00

The "Not Yets," CHARLOTTE CALKINS, '04

"Good company makes the way seem shorter."—*Walton*.

Music, GAMMA DELTA TAU MANDOLIN CLUB

OLIVE JESSIE WATSON, Leader.

"Γ Δ T On The Stage," CORNELIA SWEET, '03

"All the world's a stage,
And all the men and women merely players."—*Shakespeare*.

"The First Year," MARION McVEAN, '01

"O memories!
O past that is!"—*George Eliot*.

Song, SORORITY

We'll sing of all our Sisters dear,
Who tho' not with us now
Are singing of Gamma Delta Tau.

Alumni Reception.

ARMORY, APRIL 17, 1902.

Entertainment Committee.

LEONARD K. VERDIER, Chairman.

ARTHUR VANDENBERG

KATE WOLCOTT

ANNIE FULLER

Floor Committee.

HENRY T. HEALD, Chairman.

HARRY N. WATSON

EDWARD F. PERKINS

S. BEACH CONGER

WILL H. PERKINS



Junior Reception.

GIVEN BY THE JUNIOR CLASS IN HONOR OF THE SENIOR CLASS.

ARMORY, JUNE 29, 1902.



Athletic Association.



Officers.

1901

- E. J. HALL, President.
F. RANVILLE, Vice-President.
C. GOULD, Secretary.
H. BALDWIN, Treasurer.
M. SEYMOUR, Sergeant-at-Arms.

Board of Control.

- A. J. VOLLAND, President.
A. H. HOLMES, Secretary.
E. J. HALL.
CARL KUSTERER.
WADE TUCKER.

1902

- E. J. HALL, President.
ARTHUR CHURCH, Vice-President.
GRACE LOGIE, Secretary.
M. SEYMOUR, Treasurer.
LEON HEWITT, Sergeant-at-Arms.

Board of Control.

- A. J. VOLLAND, President.
A. H. HOLMES, Secretary.
E. J. HALL.
CARL PALMER.
CHARLES HILLIKER.



Officers.

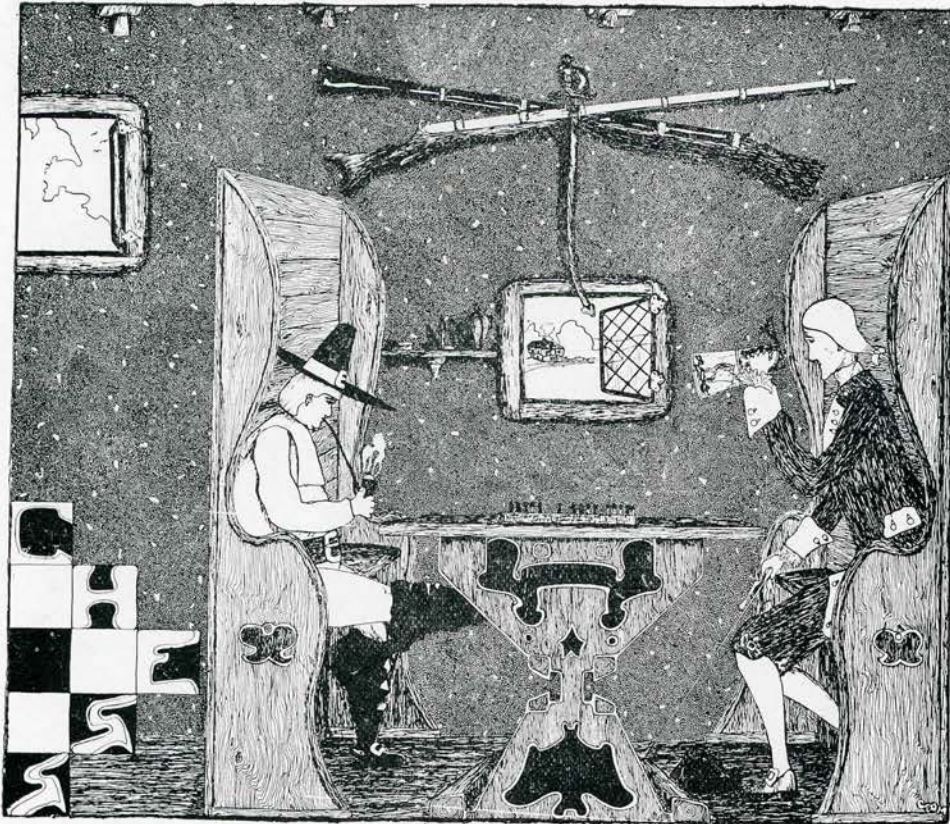
WILDER M. RICH, President.
A. H. HOLMES, Vice President.
COILA FOX, Secretary.
GEORGE CLARK, Treasurer.
SADIE ROBERTS, Librarian.
BENJAMIN SPARKS, Sergeant-at-arms.

Membership Roll.

Isaac Butterfield
George Clark
Coila Fox
Mr. Holmes

Miss A. M. James
John Otte
Roy Peebles
Sadie Roberts

Wilder Rich
Benjamin Sparks
Arthur Toren
Lewis Whitney



Officers.

WILL E. EDDY, President.
 CLAUDE CONGER, Vice-President.
 WILDER RICH, Secretary.
 SHERWOOD HALL, Treasurer.
 HOWARD DROLLINGER, Sergeant-at-Arms.

Members.

Shelby M. Boorhem.
 Thomas Carlile.
 Arthur Davidson.
 Howard Drollinger
 William Eddy.

Sherwood Hall.
 Bruff Olin.
 Wilder Rich.
 Glenn Richards.
 Howard Baxter.
 Frank Elson.

Leonard Vanderschoor.
 Martin Daane.
 Edwin Kalmbach.
 John Klaasse.
 Claude Ford.



Mandolin Club.

FRANCIS RANVILLE, Leader.

CARL KUSTERER, Manager.

CARL PALMER, Treasurer.

First Mandolins:

FRANCIS RANVILLE.

CARL PALMER.

Second Mandolins:

JAMES BARRETT.

ERNEST DALES.

Guitars:

CARL KUSTERER.

MELVIN BALDWIN.

Basket Ball Club.



Officers.

BLANCHE FULLER, President.
HELENA OTTE, Vice-President.
LORAIN LOCKWOOD, Secretary.
GRACE BARNES, Treasurer.
HELEN BORNEMAN, Manager.
CORNELIA SWEET, Sergeant-at-Arms.

Board of Control.

MR. VOLLAND.
MISS JAMES.
MISS GINN.
HELEN BORNEMAN.



Independent Society.

LEWIS WHITNEY, President.
LINA BOSTWICK, Vice President.
DORIS WOLFE, Secretary.
GEORGE W. CLARK, Sergeant-at-Arms.

Executive Committee.

ARTHUR TOREN, Chairman.
ANNA DEYOUNG,
All Officers.

Literary Society.

Officers.

WILLIAM EDDY, President.
GRACE BARNES, Vice President.
ETHEL CRYDER, Secretary.
ROY PEEBLES, Treasurer.
ISAAC BUTTERFIELD, Critic.
MONROE DUNHAM, Sergeant-at-Arms.

Executive Committee.

MERLE COVERSTONE.

JAMES POWERS.

GEORGIA STANSBURY.

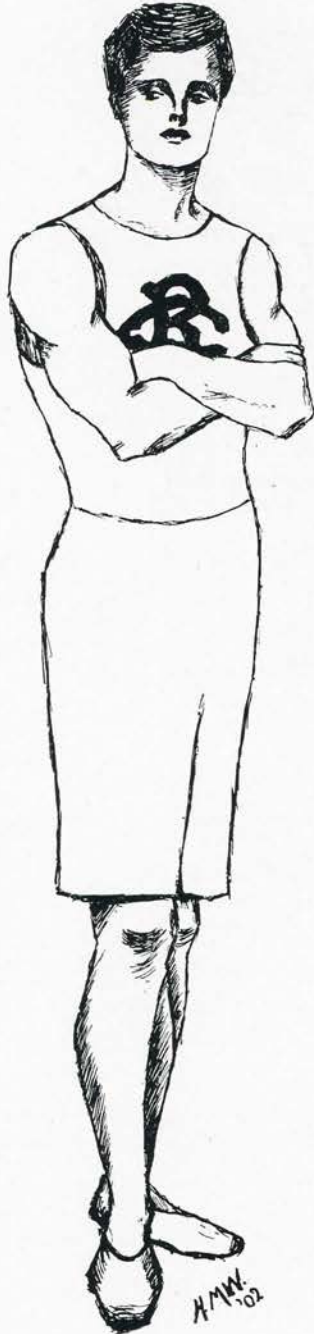


Alumni Association.

Officers.

WILBUR WARNER, President.
NORA E. BARNHART, Vice President.
LAWRENCE MORLEY, Secretary.
FERRY K. HEATH, Treasurer.

The Executive Committee consists of the Officers of the Association and the Chairmen of the Committees appointed by the President.



ATHLETICS

FOOT BALL 1901

Carl Kusterer



THE success of any school team, in order to be complete, must be two-fold—athletic and financial. Effort in one direction and support in the other brings about this end. The outcome of the interscholastic championship game at Ann Arbor was a demonstration of the success attending athletic effort in the form of coaching. Both of our coaches, Mr. Bradfield and Mr. Raymond, did good work in getting the team into shape, and the success on the field this year was due to their efforts and that of Captain Forbes. Forbes has played in the Grand Rapids High School Team for the last time and will be greatly missed next fall.

Our only defeat last year was at the hands of a high school team playing college men in a game not played on the State schedule. At the spring meeting of the Schoolmaster's Club our representatives made several suggestions leading to the amendment of rules on eligibility of players, barring any man who has used his skill in college athletics from ever contesting from points in a high school team. The

result of our Thanksgiving Day game crowned our success of the year. This victory was almost entirely due to the week of perfect coaching through which Guy Dayrell put the team.

Although in several instances financial sacrifices had to be made to get high school teams here for games, (and that is what should be made the great object in arranging the schedule) still the season ended well as shown by the stockings, sweaters and caps with which the Athletic Association presented the members of the team, without the aid of any other school organization.

To Sum Up:

1. The Foot Ball Team was successful on the gridiron this year. Next year there is no reason why the team should not be recruited, as there are some good-sized fellows in the Freshmen Class.

2. The Foot Ball Team was financially successful because of your support. We hope that you will continue to support the foot ball teams as heartily as you supported the Team of 1901.

Record of 1901 foot Ball Team.



September 28, Grand Rapids High School, 0; Whitehall Athletic Club, 0.
 October 5, Grand Rapids High School, 10; Muskegon High School, 0.
 October 12, Grand Rapids High School, 6; Allegan High School, 5.
 October 19, Grand Rapids High School, 6; Kalamazoo High School, 21.
 October 26, Grand Rapids High School, 18; Muskegon High School, 5.
 November 2, Grand Rapids High School, 21; Lowell High School, 11.
 November 9, Grand Rapids High School, 77; Grand Haven High School, 0.
 November 16, Grand Rapids High School, 5; Alumni, 0.
 November 23, Grand Rapids High School, 6; Allegan High School, 6.
 November 28, Grand Rapids High School, 17; Detroit Central High School, 0.

	GAMES WON	GAMES TIED	GAMES LOST	TOTAL NO OF POINTS	PERCENTAGES
Grand Rapids,	7	2	1	174	.784
Opponents,	1	2	7	48	.216

Grand Rapids High School Foot Ball Team, 1901.



TIBBS	HILLIKER	RAYMOND COACH	LOUCKES	BOSWORTH
HEWITT	OOSTERVEER	METHEANY	KUSTERER MANAGER	DYKEMA
BALDWIN	PALMER	MAYNARD	FORBES CAPTAIN	CLAY
			TUCKER	MORTON
				RUFFE

foot Ball Team.



CARL C. KUSTERER, Manager.

C. HILLIKER, Assistant Manager.

ARTHUR J. FORBES, Captain.

EDWARD C. RAYMOND, Coach.

	POSITION	HEIGHT	WEIGHT	YEARS' EXPERIENCE
JOHN METHEANY,	Center, . . .	6 feet	186	1
IRA OOSTERVEER,	Left Guard, . . .	5 feet 10 inches	160	1
EARL RUFFE,	Left Guard, . . .	5 feet 9½ inches	150	1
CARL PALMER,	Left Tackle, . . .	6 feet	178	3
GEORGE CLAY,	Left End, . . .	6 feet	153	3
LEON HEWITT,	Right Guard, . . .	5 feet 11½ inches	171	1
CLAY BOSWORTH	Right Guard, . . .	6 feet	150	1
HOWARD MORTON,	Right Tackle, . . .	5 feet 11 inches	156	2
WADE TUCKER,	Right End, . . .	5 feet 7 inches	118	1
STUART DYKEMA,	Quarter, . . .	5 feet 8 inches	140	2
ARTHUR LOUCKES,	Left Half, . . .	5 feet 9 inches	145	1
NELSON MAYNARD,	Right Half, . . .	5 feet 8 inches	145	1
HAROLD BALDWIN,	Right Half, . . .	5 feet 8 inches	135	2
ARTHUR FORBES,	Full Back, . . .	6 feet	168	3
HENRY TIBBS,	Full Back, . . .	5 feet 11½ inches	165	1

Second foot Ball Team.



CHARLES HILLIKER, Manager.

FRANK ELSON, Captain.

BERT MARKOFF	Right End
LELAND CLARKE	Right Tackle
HARVEY BRUNER	Right Guard
ABRAM HORNER	Center
GLEN RICHARDS	Left Guard
HARRY HOWARD	Left Guard
ROY ANDREW	Left Tackle
EUGENE CHENEY	Left End
JOHN DEVLIEGER	Left End
ROBERT STIMSON	Quarter
FRANK ELSON	Right Half
WILLIAM McNABB	Left Half
CHARLES HILLIKER	Full Back

Record.

- G. R. H. S. Second Team, 45; G. R. Business University, 0.
G. R. H. S. Second Team, 12; Evening Press, 6.
G. R. H. S. Second Team, 18; South End, 0.
G. R. H. S. Second Team, 17; Evening Press, 0.

High School Track Records.



EVENT	HOLDER	DATE	RECORD
100 yard dash,	F. E. BRADFIELD, '92,	June 4, 1892	10 $\frac{1}{5}$ sec.*
220 yard dash,	W. P. WESTON, '98,	May 15, 1897	24 $\frac{3}{5}$ sec.
440 yard dash,	L. T. CLOSTERHOUSE, '01,	May 18, 1901	55 $\frac{1}{5}$ sec.
One-half mile run,	M. DAANE, '03,	May 3, 1902	2 min. 8 $\frac{2}{5}$ sec.
One mile run,	A. M. WIDDICOMB, '01,	May 26, 1900	4 min. 55 sec.
One-quarter mile bicycle,	B. W. OLIN, '02,	May 18, 1901	33 $\frac{3}{4}$ sec.
One mile bicycle,	B. W. OLIN, '02,	May 26, 1900	2 min. 37 $\frac{3}{5}$ sec.
One mile bicycle, (paced)	A. M. WIDDICOMB, '01,	May 6, 1899	2 min. 42 sec.
Two mile bicycle,	H. G. B. DAYRELL, '98,	June 5, 1897	5 min. 41 sec.
One-quarter mile walk,	B. L. BARTLETT, '95,	Oct. 20, 1894	1 min. 39 $\frac{3}{4}$ sec.
One mile walk,	R. E. WHITE, '95,	Oct. 21, 1893	9 min. 13 $\frac{3}{5}$ sec.
Standing broad jump,	W. P. WESTON, '98,	May 25, 1895	9 ft. 9 $\frac{1}{2}$ in.
Running broad jump,	R. L. COFFIN, '92,	Oct. 3, 1891	18 ft. 11 in.
Throwing 12 lb. hammer,	H. H. TIBBS, '02,	May 5, 1900	89 ft. 9 in.
Throwing 16 lb. hammer,	J. R. MATTHEWS, '99,	May 28, 1898	69 ft. 11 in.
Putting 12 lb. shot,	H. H. TIBBS, '02,	May 3, 1902	35 ft. 9 $\frac{1}{2}$ in.
Putting 16 lb. shot,	P. M. SHAFER, '93,	May 20, 1893	33 ft.
Pole vault,	J. H. RILEY, '02,	May 3, 1902	9 ft. 3 in.
220 yard low hurdles,	H. H. TIBBS, '02,	May 3, 1902	28 $\frac{3}{5}$ sec.
Kicking foot ball, (av. 3 trials)	C. KUSTERER, '02,	May 3, 1902	126 ft. 11 in.
100 yard three legged race,	{ F. E. HAUGH, '01, } { C. N. MATHER, '01, }	May 5, 1900	13 $\frac{4}{5}$ sec.
Two mile run,	R. SPRING, '02,	May 18, 1901	11 min. 17 $\frac{3}{4}$ sec.
Standing high jump,	C. D. RYSDALE, '96,	May 20, 1893	4 ft. 9 in.
Running high jump,	C. D. RYSDALE, '96,	May 20, 1893	5 ft. 5 in.
One-half mile relay race,	MU DELTA SIGMA,	May 3, 1902	1 min. 44 sec

*Tied four times.

Track Team for 1902.



	HEWITT		TIBBS		NEHR	
RILEY	MAYNARD		SPRING		WEST	
	MANAGER		CAPTAIN			
DAVIDSON		BALDWIN		DAANE		

Sixteenth Annual field Day.

MAY 3, 1902.



Officials of the Day.

Referee—H. T. HEALD. Starter—H. G. B. DAYRELL. Clerk of Course—GEORGE F. CLAY.
 Judges—PARK McMULLEN, Timers—ROY PEEBLES,
 ISAAC BUTTERFIELD, HOWARD MORTON,
 CLIFFORD PAIGE. JAY UTLEY.

EVENT	FIRST	SECOND	THIRD	TIME OR DISTANCE
100 yard dash, . . .	L. NEAHR, . . .	N. MAYNARD, . . .	H. BALDWIN, . . .	10.45 sec.
Pole vault, . . .	H. RILEY, . . .			9 ft. 3 in.
Two mile run, . . .	R. SPRING, . . .	H. HOWARD, . . .		11 min. 29 sec.
Running broad jump,	R. WEST, . . .			By default.
220 yard dash, . . .	L. NEAHR, . . .	H. BALDWIN, . . .	N. MAYNARD, . . .	25.45 sec.
One mile run, . . .	M. DAANE, . . .			By default.
Running high jump,	R. WEST, . . .	H. RILEY, . . .	W. WAHL, . . .	5 ft. 3 in.
440 yard dash, . . .	H. BALDWIN, . . .	R. POOLE, . . .	A. BLAKE, . . .	56 $\frac{3}{8}$ sec.
Freshman-Soph. half mile run, }	F. AVERY, . . .	J. POWERS, . . .	WINSLOW, . . .	2 min. 29 sec.
Half mile run, . . .	M. DAANE, . . .	H. BALDWIN, . . .	R. POOLE, . . .	2 min. 8 $\frac{3}{8}$ sec.
220 yard low hurdles,	H. TIBBS, . . .	R. WEST, . . .		28 $\frac{3}{8}$ sec.
Thr'wing 12 lb hammer,	H. TIBBS, . . .	L. WHITNEY, . . .		85 ft. 6 in.
Freshman-Soph. 100 yard dash, }	S. GOODMAN, . . .	WINSLOW, . . .	J. POWERS, . . .	11.5 sec.
Foot-ball kick, . . .	C. KUSTERER, . . .	L. NEAHR, . . .		126 ft. 11 in.
Putting 12 lb. shot, . . .	H. TIBBS, . . .	W. SEEMENS, . . .	N. MAYNARD, . . .	35 ft. 9 $\frac{1}{2}$ in.
Half mile relay race,	MU DELTA SIGMA,	GAMMA DELTA PSI,		1 min 44 sec.

BASKET BALL

THE Grand Rapids High School Girls' Basket Ball Club was formally organized Oct. 23, 1902, having a membership of about one hundred and sixty girls. The enthusiasm with which the girls welcomed the idea of a basket ball club shows their desire to take part in athletics and their interest in the sports connected with this school.

About sixteen teams were organized, playing one night each week in the High School Auditorium, under the direction of Miss Esther M. Collins as coach. Later it was decided to form a High School team and a second team which should represent the school in all match contests. The best players of the school were chosen for these two teams, and since then Mr. W. J. Williams has acted as coach.

On April 26, two teams played a very exciting game at the Auditorium, one wearing a white band about the arm, the other gold, representing the High School colors. At the end of the first half the score stood 4-4, but in the second half the whites gained four baskets, making the score at the end of the game, 4-17, in favor of the whites. Good work was done by both teams, showing the steady improvement which has been developing in team work.

The club has proved a great success considering its short existence and promises to be a strongly organized factor of the High School athletics.

HELEN BORNEMAN, '03.

Base Ball Team.



GEORGE BERKEY, Manager.

CARL PALMER, Captain.

A. DAVIDSON,	Catch
C. LILLIE, G. CLARK,	Pitch
C. PALMER,	First Base
L. HEWITT,	Second Base
G. MATTHEWS,	Third Base
F. ELSON,	Short Stop
G. BERKEY,	Left Field
C. HILLIKER,	Center Field
B. OLIN,	Right Field

Schedule.

- April 26—Union School at Grand Rapids.
May 1—McLachlin Business University at Grand Rapids.
May 3—Kalamazoo High School at Kalamazoo.
May 10—Hope College at Holland.
May 17—Interscholastic Meet at Ann Arbor.
May 24—Ferris Institute at Big Rapids.
May 31—Hope College at Holland.
June 7—Newaygo High School at Newaygo.
June 14—Paw Paw High School at Paw Paw.
June 21—Alumni at Grand Rapids.

Inter-fraternity foot Ball.



Mu Delta Sigma.

CHARLES HILLIKER, Manager.
HAROLD BALDWIN, Captain.

Gamma Delta Psi.

CARL PALMER, Manager.
ARTHUR FORBES, Captain.

ARTHUR DAVIDSON	Center	ABRAM HORNER
LEON HEWITT	Left Guard	LEWIS NEAHR
RAYMOND WEST	Left Tackle	CARL PALMER
BERT MARKOFF	Left End	STUART DYKEMA
JAY UTLEY	Right Guard	JOHN METHEANY
HOWARD MORTON	Right Tackle	LELAND CLARKE
WADE TUCKER	Right End	JAMES HALL
MILLARD SEYMOUR	Quarter	GEORGE BERKEY
CHARLES HILLIKER	Left Half	GEORGE CLAY
HAROLD BALDWIN	Right Half	NELSON MAYNARD
HENRY TIBBS	Full Back	ARTHUR FORBES

Score.

Gamma Delta Psi,	5
Mu Delta Sigma,	0

Hockey.



Mu Delta Sigma.

PHILLIP RAIGUEL, Captain.

CARL KUSTERER, Manager.

Henry Tibbs

Millard Seymour

James Barrett

William Avery

Wade Tucker

Arthur Davidson

Leon Hewitt

Gamma Delta Psi.

CARL PALMER, Captain.

STUART DYKEMA, Manager.

George Clay

Stephen Goodman

George Berkey

Eugene Cheney

Nelson Maynard

Arthur Church

Independent Society.

CHARLES FOOTE, Captain.

GLEN RICHARDS, Manager.

George Wood

Harry Howard

George Dykhouse

John De Vlieger

Cornelius Dutmers

Union School.

GEORGE MATTHEWS, Captain.

EARNEST DALES, Manager.

Don McAfee

Peterson

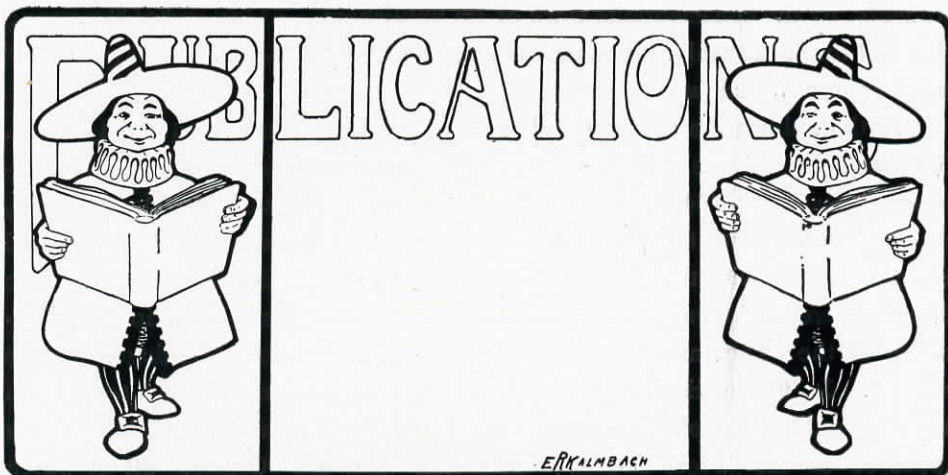
Cortlander

Harris

Lawton

Record.

January 18, Mu Delta Sigma,	0;	Gamma Delta Psi,	1.
January 25, Mu Delta Sigma,	4;	Union School,	2.
February 1, Gamma Delta Psi,	2;	Independents,	0.
February 1, High School,	3;	Union School,	4.



Grand Rapids High School Journalism.



OUR school has ever been prominent in the field of journalism, and the literary ability brought forth through this medium has made our school of the highest literary standard. In the year 1886, the first school paper appeared, in the form of an eight page monthly called the "High School Journal," published by the old Lyceum. In '88 this paper died a natural death, and was succeeded by the "Deltan," published by Delta Chapter, Gamma Delta Psi. This suffered the fate of its predecessor. In the month of October, 1892, the "Helios" appeared, and by good literary and financial management, has continued to date. Being published in the interest of the High School, it has done credit to the student body and to its publishers, Gamma Delta Psi. During the year 1897, the "Echo" put in its appearance as a rival, but went to its reward at the end of the school year, although gallantly supported by Alpha Chapter, Phi Sigma. The "Every-Other-Week" entered the field in 1900, and immediately won the hearts of the

students, by the conscientious work of its publishers. At the end of the year it changed into a monthly, which necessitated a change of name, and "La Plume" made an appearance in its stead.

In the publication of our Annuals, the experience has been most varied. Gamma Delta Psi was the first in the field, publishing the Mirror for four consecutive years, '93, '94, '95, '96. In 1895, Alpha Chapter, Mu Delta Sigma, entered the field with the Delphian. Successful in its first attempt, it appeared again in '96, but with the "Year Book" published by Phi Sigma as a rival. The three-cornered fight was disastrous to all, and in '97, all combined in the publication of the "Tabularium." In '98 the Olympian appeared, being a private venture. In '99 the High School Literary Society was formed, and took upon itself the publication of the annuals for the next three years, '99, '00, '01. They appeared as the "Fleur-de-Lis," "Manteion" and the "Oracle," all of which were successful, both in a literary and financial way, two qualifications rarely combined, heretofore.

This year the Senior Class has undertaken the work, and the "Alphean" enters the arena with its long line of predecessors.



THE ALPHEAN

VOL. X. 1902.

PUBLISHED BY
THE SENIOR CLASS



SUCCESSOR TO THE
"MIRROR," "DELPHIAN," "YEAR BOOK," "TABULARIUM,"
"OLYMPIAN," "FLEUR-DE-LIS," "MANTEION," "ORACLE."

GEORGE F. CLAY, *Editor-in-Chief.*
MARSHALL M. UHL, *Business Manager.*

Alphean Editorial Board.

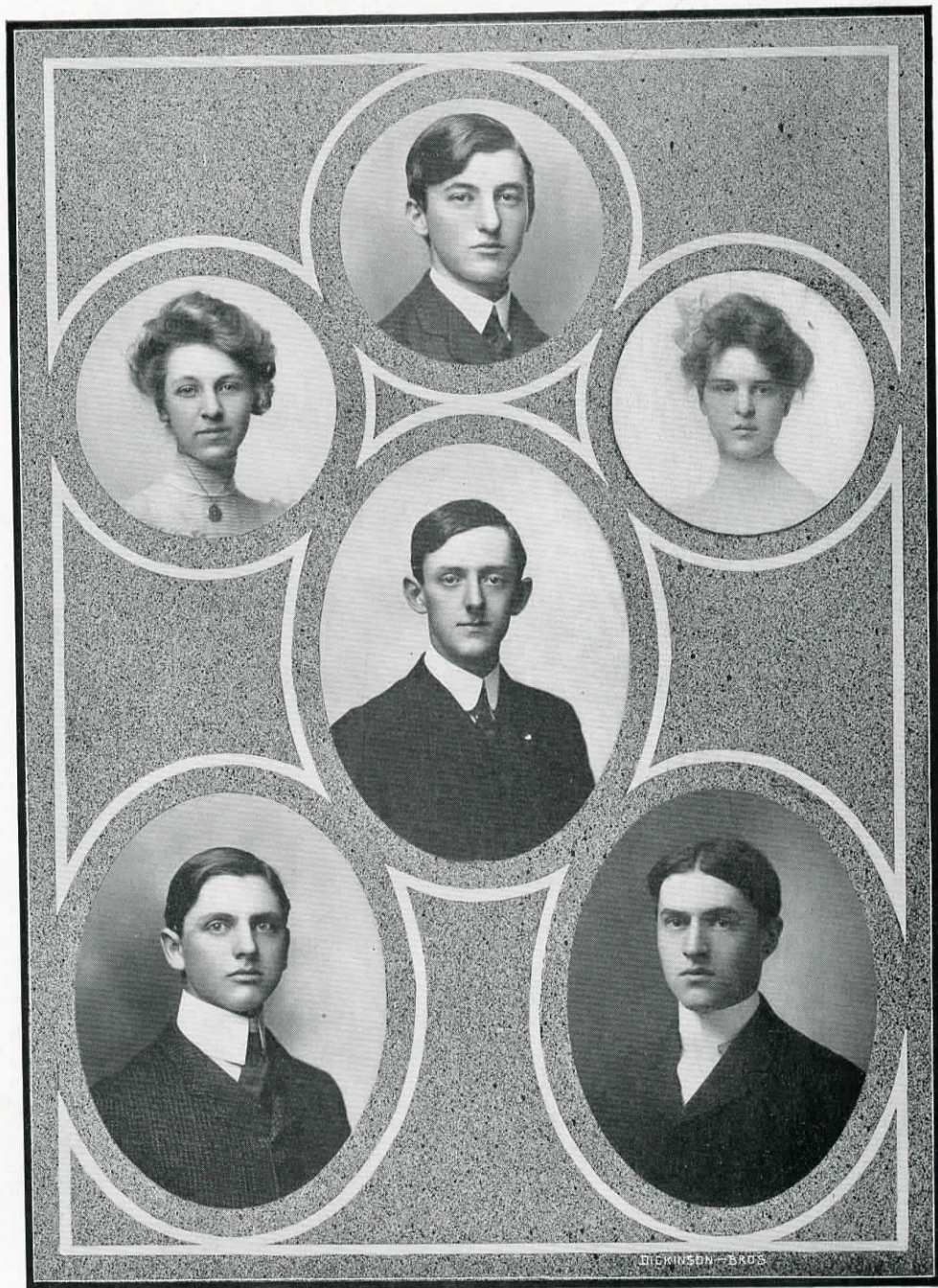


EDDY
MOSHER

LOCKWOOD
CLAY
MORTON

PIERCE
SMITH

Alphean Managing Board.



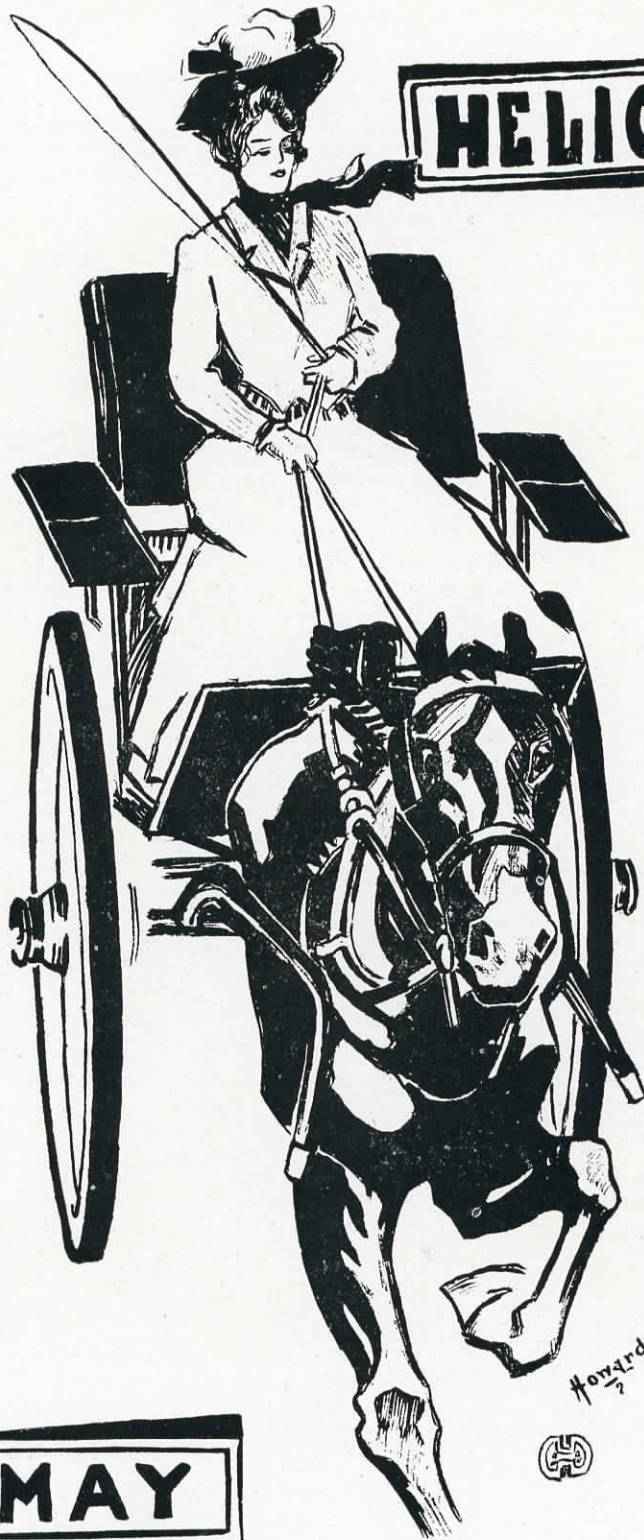
HAINES
UTLEY

KUSTERER
UHL

FULLER
TIBBS

DICKINSON - BROS.

HELIOS



MAY

Howard
7

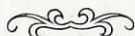




"Helios" Board.

HORNER	PALMER	MC MULLEN	AMBERG	NEAHR	BERKEY	WILMOT
FULLER	UHL	MORRIS	HOUSEMAN	TREADWAY	CHURCH	MERRIL
HURST			WARD			

“HELIOS” BOARD.



VOL. XIX.

EDITORS:

JAMES L. HALL, EUGENE B. HOUSEMAN.

BUSINESS MANAGER:

MARSHALL M. UHL.

ASSISTANT EDITORS:

GEORGE BERKEY, CARL PALMER, BLANCHE FULLER,
HAZEL AMBERG, ANNIE GRAVES.

ASSISTANT BUSINESS MANAGERS:

ALFRED TREADWAY, ARTHUR CHURCH.

CIRCULATOR:

PARKE McMULLEN.



VOL. XX.

EDITOR:

EUGENE B. HOUSEMAN.

BUSINESS MANAGER:

ALFRED TREADWAY.

ASSISTANT EDITORS:

GEORGE BERKEY, CARL PALMER, HAROLD SHARPE,
HAZEL AMBERG, CARRIE WARD,
RUTH WILMOT.

ASSISTANT BUSINESS MANAGERS:

LEWIS NEAHR, ABRAM HORNER.

CIRCULATOR:

STANLEY MORRIS.

ASSISTANT CIRCULATOR:

ARTHUR HURST.

LA PLUME



19

CHRISTMAS

01

-WESTON-

"La Plume" Board.

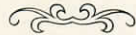


UTLEY
KALMBACH
MOSHER

WORKMAN
STORY
PEEBLES

SPARKS
BLOCKSMA
DYKEMA

“LA PLUME” BOARD.



VOL. V.

EDITOR-IN-CHIEF:

HARRY STORY, '02.

MANAGING EDITOR:

A. ROY PEEBLES, '03.

BUSINESS MANAGER:

JAY D. UTLEY, JR., '02.

SUBSCRIPTION MANAGER:

BENJAMIN SPARKS, '03.

SUBSCRIPTION STAFF:

BESSIE WALTON, '02, GEORGIA STANSBURY, '03, LEGRAND ALBEE, '04,
RAYMOND WEST, '05, FOSTER RENWICK, '05, NELLIE STEKETEE, '04,
FLORENCE HOOD, '04, FLORENCE LE MOINE, '05,
LOUIS WESTON, '04, MORRIS FISHER, '05.



VOL. VI.

EDITOR-IN-CHIEF:

A. ROY PEEBLES, '03.

MANAGING EDITOR:

EDWIN R. KALMBACH, '03.

BUSINESS MANAGER:

JAY D. UTLEY, JR., '02.

SUBSCRIPTION MANAGER:

DEWEY BLOCKSMA, '03.

SUBSCRIPTION STAFF:

BESSIE WALTON, '02, GEORGIA STANSBURY, '03, LEGRAND ALBEE, '04,
RAYMOND WEST, '05, FOSTER RENWICK, '05, CORA GREEN, '04,
PARK JOHNSTON, '04, LOUIS WESTON, '04,
MORRIS FISHER, '05.



EDITORIAL

THE BOARDS of Editors and Managers of *The Alphean* have tried to give the High School an annual that will help both past and present students to keep in touch with the history and accomplishments of our school.

"Errare Est Humane." In presenting this book to the school, we hope they will overlook the many errors which occur within, and will take in good spirit all grinds and roasts.

One of the essentials in publishing an annual, without which it would be impossible to succeed, is the advertisements. Remembering this fact, we trust that all the students will patronize our advertisers, thus helping all future publications of the school.

With thanks to the many who have helped us in our needs, we present this annual to the Grand Rapids High School from the Class of 1902.

HIGH-SCHOOL PLAYS





DODO McLAREN

ALL STAR CAST[†]

... in ...

Sharps and Flats

... given by ...

Delta Chapter, Gamma Delta Psi,

February, 1902.



CHARACTERS

ARTIE BRUCE, - - - - - GEORGE F. CLAY
Tessie's fiance, who loses his train, but never his nerve.

BIGLER JIMSON, - - - - - ALFRED TREADWAY
Who forgets his nerve, but is a good fellow just the same.

COL. THOMAS QUINCY GINTY, - - - - - CARL PALMER
Who shoots first and explains afterwards.

TYRONE HERBERT, - - - - - NELSON MAYNARD
Leading man at the "Melpomene," and delight of the "Matinee Girl."

JENKS, - - - - - PARK McMULLEN
Janitor of the Spoopendyke.

TESSIE GINTY, - - - - - GEORGE BERKEY
Very much engaged to Artie, and deathly afraid of papa.

DODO McLAREN, - - - - - MARSHALL UHL
Leading lady at the "Melpomene;" has a short memory, but is a warm friend.

SARAH, - - - - - ARTHUR CHURCH
Her maid, equally struck with the stage, Tyrone Herbert and herself.

SUPERS—JOHN METHEANY, LEWIS NEAHR, STUART DYKEMA
AND PARK McMULLEN.

SCENE

Dining room of Miss Dodo McLaren's apartments.

THE
 “Japanese Cherry Blossoms”

... given by ...

Epsilon Chapter, Gamma Delta Tau Sorority

Direction of Miss Calla Travis

April 11th and 12th

SAINT CECILIA AUDITORIUM



CAST:

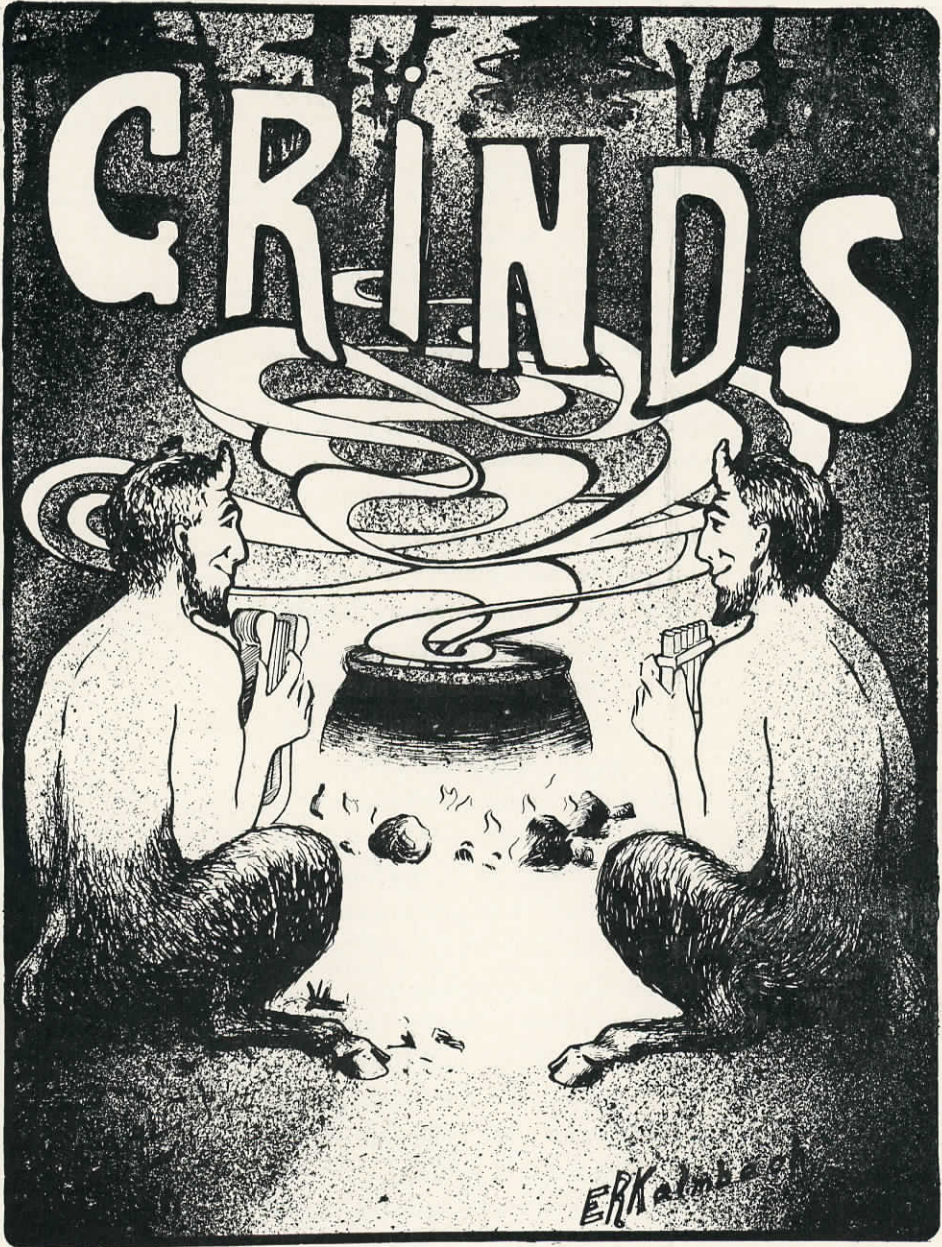
PRINCESS SAY-CHO-CHO-NEE,	OLIVE WATSON
PITTI SING,	BLANCHE FULLER
ENDEE MAN,	ANNE GRAVES
MUSICEE MAN,	CARRIE WARD
PINKERTEE,	HAZEL AMBERG
RONANCEE,	IRENE FOLLETT
SHOTAKEE,	JESSIE WAGNER
SENDACE,	LELIA VOLLAND
ASANO,	MARGUERET CARLILE
PETCHILI,	HELEN BRADFIELD
TAKUMI,	CORNELIA FISHER
NANEE,	MARGUERET PALMER
ANE-SAN,	CORNELIA SWEET
JINJO,	HAZEL DAVIDSON
OKI-ONEE,	MABEL DUNN
YAMATEE,	BELL McNABB
KYOTO,	CHARLOTTE CALKINS
AKE-YEDEE,	OLIVE GRINNELL

ATTENDANTS TO PRINCESS:

Wo Statee, Kendal Steketee

“BABY JAPS”

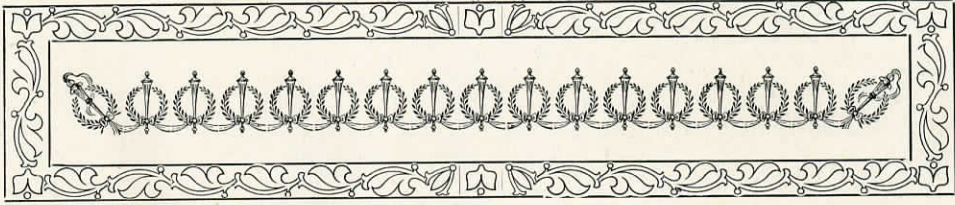
Pauline Heinzelman, Marion Sprague, Mildred Collatt,
 Nora Clement, Carolyn White.
 Chaperon—Mrs. Heinzelman.



New Mother Goose.



- A** is for Andrew, who jollies the girls;
B is for Barnard, with beautiful curls;
C is for Clark, our president great;
D is for Davie, where boys meet their fate;
E is for Eddie, our orator grand;
F is for Fuller, who has lots of sand.
G is for Godwin, so slender and tall;
H is for Houseman, the smartest of all.
I is for Isaac, our popular boy;
J is for Jennie, with glances so coy.
K is for Kusterer, who never will treat;
L is for Lockwood, so pretty and sweet.
M is for Morton, so handsome and shy;
N is for Nelson, who drinks nothing but "Rye."
O is for Olin, who is a dead beat;
P is for Palmer, the boy with big feet;
Q is for Quimby, on the third floor;
R is for Rosa, whom all boys adore.
S is for Scoby, our ball player great;
T is for Tucker, who has a swell "pate."
U is for Uhl, so grave and sedate;
V is for Violet, who writes up our fate.
W is for Ward, who talks all the day;
X is what we need when we've strayed far away.
Y is for You, who don't here appear;
Z is the finish of all of us here.



Comedy of Errors.



NOTE Collected from several fragments and published with notes by Vergilius.
Doubtful whether Wm. Shakespeare or Mark Twain is to blame.

PERSONS REPRESENTED.

BURTIUS SMITIUS,	-	-	-	A Philosopher
CARLIANUS KUSTERIO,	}	- A Triumvirate of Scholars		
GEORGIUS FRANCISCO,				
VERGILIUS EPHRUS,				

ACT FIRST.

SCENE I. Room in School of Burtius.

(The triumvirs sitting at table.)

Geo.: Full many a weary day has run,
Since we three have caused any fun.

Carl: 'Twere better that you silence keep,
And you wish not pains to reap.
For Burtius casts at us many glances,
That we are up to evil he ever fancies.

Burtius: (At a distance, aside.)
I like not these lean and hungry men.

Verg.: Let's do something worthy our name,
That these very walls may ring with our fame.

Geo.: Ha! now comes an inspiration great —
Burtius has asked of us to relate
In these parchment records
Of strange experiments,
How errors may with ease appear.
Now, you Carlianus, measured the water pure,
You, Vergilius, did the figuring sure,
Whilst I the thermometer read.

Then do you, Carlianus, write on your scroll
That Vergilius' mathematics an error would cause.
Vergilius shall write my readings at fault,
And I, that Carlianus measured the water wrong.
Verg.: Oh, noble Georgius, A Daniel! A Daniel!
Carl: Hush! Burtius looks this way.
(They write according to Georgius' plan and depart.)
Burtius: Mischief, thou art afoot.

ACT SECOND.

SCENE I. Next day. Another room in same palace.

(Triumvirs reclining on couch.)

Verg.: Why that troubled look, O Carlianus?
Carl: Ah! I feel a premonition of coming evil—
Last night I saw strange prodigies on the street.
Against the Capitol I saw Perry a War Cry purchase,
Two wheels did blaze and scorch and race.
Geo.: Fear not, Burtius will not punish our brightness,
And the fear of expulsion is far less.
Verg.: Perchance he e'en will laugh with glee
At the wit and humor of us three.
Carl: Then to his room let us away.

SCENE II. Burtius' room. Burtius with a pile of scrolls.

Burtius: Good morrow, merry gentlemen. Here are your scrolls.
(Passes on.)

Carl: I fear to open it. Mine knees would knock together.
An' they were able.
Geo.: Shall it be said we frightened were?
Let's open—read—of our penalty make sure
E're we tremble.
(They open and read.)
Carl: Alas! I feared it.
Verg.: By the gods! I am marked a paltry three,
And that cursed answer's marked thru with red, I see.
Geo.: And I the same.
Carl: And I. Woe is ours.
Geo.: Cheer up. Let's laugh while we may,
We've had our joke. Let's take our pay.
Verg.: Methinks I heard a voice cry, "Joke no more,
Burtius does murder joke."
Carl: We'll joke no more. There's my hand on't.
Geo.: And mine. I think not.
Verg.: And I, likewise.

Calendar of Court of
GRAND RAPIDS HIGH SCHOOL.



CHARGE

<i>The People vs. Kusterer—</i>	-	-	Crooked means of support.
<i>The People vs. Spring—</i>	-	-	Wearing last year's tags.
<i>The People vs. Barnard—</i>	-	-	Cruelty to animals, i. e. overworking a pony.
<i>The People vs. Sparks—</i>	-	-	Murdering Chaucer.
<i>The People vs. Volland—</i>	-	-	Attempt at joke in Senior Class Meeting.
<i>The People vs. Daane—</i>	-	-	For being too fast.
<i>The People vs. Riley—</i>	-	-	Stealing glances at ——?



I wish I were in kindergarten,
 In a lovely painted chair,
 All surrounded by sweet children,
 With blue ribbons in their hair.

Singing songs about sweet nature,
 Written by some sickly fool.
 It would be a big improvement
 On the singing here in school.

—ISAAC.

Brilliant Sayings.

Rhida Ponie: "And the purple blood spurted forth from the sea monster."

Sotto Voce: "He must have been the Prince of Whales—he had *blue* blood."

Mrs. Hulst: "What kind of hair did he have?"

L--- New-ham: "O, he was bald."
"Uncle-in-law by marriage."

Mr. Smith: "A solar eclipse of the sun."

"What I was about to say is was."

M. F---k: "Look not upon the *fudge* when it is brown."

Tu-k-r: "Since I have been getting my lesson every day, Miss Jones doesn't call on me any more."
Hard luck.

E--y: "I nominate C--y for debater."

C--y: "I nominate G---d for debater."

G---d: "I nominate E--y for debater."

E--y: "I move the nominations be closed."

N. B.: But it didn't work.

SCENE: AVERNUS.

Palinurus: "Where in Hades are you going, Aeneas?"

Translation: "And the bull fell back."

Whisper: "Almost a cowslip."



A Few Applied Quotations.

Clark: "With speed, he distanced them all."

Scoby: "Tall, and divinely fair."

Spring: "And if we tell not of ourselves, surely no one will tell it for us."

Whitney: "Lazy he was, and jolly."

Butterfield: "And ever had his cheerful tale."

Blanche Fuller: "Led ever the maidens weak."

Riley: "Did his bent, and quietly went his way."

Morton: "Modest, and holding to his own affairs."

Andrews: "Fond of sweet femininity."

Miss James: "To know was to love her."

Conger: "An unassuming nature, o'er mantling knowledge deep."

Rich: "You might hear his chuckle full many a rod."

Bessie Walton: "With voice e'er upraised in merriment"

Lina Bostwick: "You would hardly know she was there."

Marion Powers: "And after all, women are the wisest."

Carrie Ward: "Talked and talked, and still she talked."

E. Haines: "Had fifty fishes on a string."

From Star Translations in Vergil.



"He fixed his lamps on Libya."

"They stood with erected ears."

E. Barn--: "Fragments of Diana."

"He filled himself full."

Miss J.: "No, the cup was full."

E. B.: "The silver was chased about
by the gold."

A. G.: "He stopped his voice with
his foot."

I. S.: "These are the monuments of
my hands."

C. W.: "The sun rose down."

M. C.: "He catches the air in his
ears."

B. F.: "Snatch us away, O com-
rades."

J. R.: "He precipitated himself up-
on the shore."

"Scatter me on the waves."

C. W.: "He was the goddess of
light."

S. B.: "He beat the high stars."
"The voice of their feet."

R. Tuc.: "It was decided to sail
backwards."

"I recognize the footsteps of old
flames."

F. Rose: "Joined in marriage to the
threshold."

L. Diamo: "His mind and perfumed
locks were tied beneath his cap."

L. Coal: "Come, go, and put on
your wings."

C. Roar: "He drew out his long
voice."

May: "Awake headlong, O men!!!!"

C. Fox: She hastened her steps with
the zeal of an old woman."

G. Doth he: "He crowned his ma-
ternal temples."

Idem: "Acestes, filled with age."

I. Butterwheel: "He left the tasted
altars."

Etiam: "He poured the wine out of
his gauntlets."

C. F.: Whither are you going in
the opposite direction?"

"He turned the old man headlong
into water."

"I twice tried to put my arms about
her neck—that's as far as I got,
Miss Jones."

Miss Jones: "What does include
mean?"

Miss Powers: "Shut up!"

B----- F-----: "Aeneas walked forth
alone, accompanied by faithful
Achates."

Fanny Eva May.



Only direct wire. All correspondence will be answered promptly.

"Miss Hurt wishes to speak with me. Think hard Carrie and I'll catch you in a moment. When will I get married? That is a very hard question to answer, as you are thinking of so many fellows, there does not seem to be any one who has a chance to propose."

"The name of K-u-s-t-e-r-e-r comes to me. Yes, Mr. Kusterer, you will be elected president of the senior class, you know you are popular, especially among the girls."

"Mr. Barnard you had better follow the stage. Your beautiful curls will attract all the girls and you will be very popular."

"Park McMullen wishes to talk with me. You wish to know the name of the dark eyed girl, whom you call Brunhilda. Her name is Frank, but be careful Dorcas. Some one may get Riley."

"Comes to me the name of M-c-I-n-t-y-r-e. Yes, Courtney, you have a Case."

"Think with me Mr. Whitney, I'll catch you in a moment, O, I have it now. You should of known better than to submit your picture to the class and expect it to be accepted as a sample."

"I should like to answer some one by the name of Borneman. She wishes to know if an organization, of which she is manager, will be a success. The organization is a basket ball team and will be a great success in every way and financially advantageous to yourself."

"The name of Miss Allen comes to me. Yes, the teacher in the high school. Miss Allen, the boys who stole your ice cream are in this building and if they don't return every bit they took I shall report them to the police."

"Mr. Morton, stop thinking of that girl or she will cause you much trouble."

"A Riley wishes to know what is good for a cough. Herbert, get to bed earlier nights and take some of Henry Tibbs' cough syrup."

“Public Occurrences.”

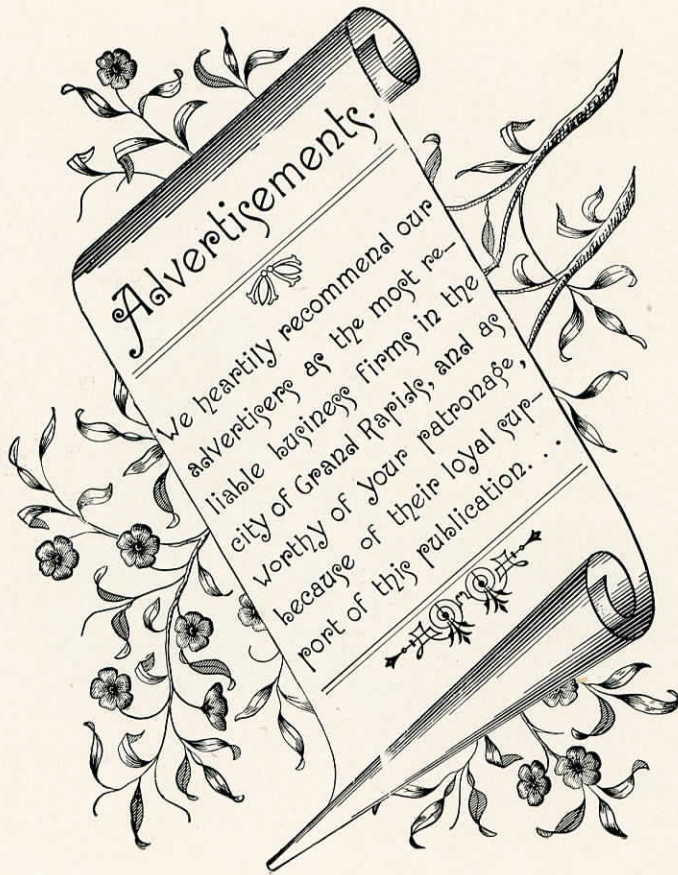


- SEPT. 9 From pleasures various we
reluctantly turn our feet into
paths of toil.
- SEPT. 10 Easy money.
- SEPT. 11 Also.
- SEPT. 12 It's up to us to study.
- SEPT. 13 We sweat.
- SEPT. 16 We perspire. Foot ball
team begins practice.
- OCT. 5 G. R. H. S., 10; Muskegon,
0. Great!
- OCT. 7 Spooches.
- OCT. 12 G. R., 6; Allegan, 5.
- OCT. 19 G. R. 6; Kalamazoo, 21.
Second team, 45; Business
College, 0.
- OCT. 21 School is draped in black.
- OCT. 23 Girls' Basket Ball Associa-
tion, Rah! Athletic Asso-
ciation increases member-
ship.
- OCT. 24 Athletic Association holds
election. Kindergarten in
evidence.
- OCT. 26 G. R., 18; Muskegon, 5.
Whee!
- NOV. 2 G. R., 29; Lowell, 11.
- NOV. 9 G. R., 77; Grand Haven, 0.
Oh, my!
- NOV. 11 Joy.
- NOV. 16 G. R., 5; Alumni, 0.
- NOV. 23 G. R., 6; Allegan, 6.
- NOV. 27 Grand parade, led by
mayor's permit to yell.
- NOV. 28 G. R., 17; Detroit, 0. Cele-
brations. Turkey. Break
training.
- NOV. 29 Everybody sick.
- DEC. 23 There was rest for the weary.
- DEC. 26 $\Gamma \Delta \Psi$ at the Lakeside.
 $M \Delta \Sigma$ at the Warwick.
- JAN. 6 Back in school again.
Everybody flunks. New
seats in Senior Session
Room.
- JAN. 7 Tibbs and Morton sick on
account of cramps because
of new seats.
- JAN. 8 Carriage bills.
- JAN. 11 Sharps and Flats at St.
Cecilia.
- JAN. 15 Exams begin.
- JAN. 18 Hockey, $\Gamma \Delta \Psi$, 0; $M \Delta \Sigma$, 1.
- JAN. 25 Hockey, G. R. H. S., 2;
Union School, 3.
- JAN. 30 First semester ends.
- JAN. 31 $\Gamma \Delta \Psi$ feed at Military Club.
- FEB. 3 Some Seniors join the class
of '03.
- FEB. 14 Announcement of class elec-
tions. Jolly, jolly, jolly.
- FEB. 17 Ribbons and tickets.
- FEB. 18 Carnations.
- FEB. 19 Crocuses.
- FEB. 20 Violets.

- FEB. 21 Class elections. Celebration in I. S. camp. $\Phi \Sigma$ at Military Club.
- FEB. 24 A certain table in Physic's Lab. is christened "defeated politician's table."
- FEB. 25 Maynard explains difference between banquet and dinner.
- MAR. 21 School closes for one week.
- MAR. 31 Back again to work.
- APR. 2 Sleepers' union organized. Powers president, Reelman chief snoozer.
- APR. 3 Powers goes to sleep in Physics.
- APR. 4 Reelman goes to sleep in Physics.
- APR. 12 Indoor meet with Muskegon, M. H. S., 27; G. R. H. S., 44.
- APR. 13 Kusterer and Seymour do not show up at home.
- APR. 14 Kusterer gets a letter from his Muskegon friend.
- APR. 17 Alumni reception at Armory.
- APR. 18 Everybody sleepy.
- APR. 21 Butterfield can't get excuse.
- APR. 25 Indoor meet with Y. M. C. A.
- APR. 26 Girls play basket ball at Auditorium.
- MAY 2 $\Gamma \Delta \Psi$ have dancing party at St. Cecilia.
- MAY 3 Field day.
- MAY 7 Base ball, Juniors vs. Seniors. Seniors won, 6 to 4.
- MAY 8 Clark treats the crowd.
- MAY 9 $\Gamma \Delta T$ feed at Kent Country Club.
- MAY 10 Muskegon girls come to visit Kusterer.
- MAY 12 Kusterer goes broke and flunks.
- MAY 15 Carver's union organized. Dues 25c, payable to Mr. Volland.
- MAY 17 Interscholastic meet at Ann Arbor. G. R. H. S. tie for third place.
- MAY 19 Snyder comes to school with a new suit from Ann Arbor. Some new hats appear.
- MAY 20 Daane elected captain '03 track team.
- MAY 22 Spring fell down Y. M. C. A. stairs, could not enter meet Saturday.
- MAY 23 $M \Delta \Sigma$ at Lakeside Club. Dancing party.
- MAY 24 Athletic meet, Orchard Lake 46, Y. M. C. A. 44; G. R. H. S. 24, Muskegon 22.
- MAY 26 School in mourning.
- MAY 29 Memorial Day exercises at Park Church.
- MAY 31 Day off. Base ball team won from Lowell, 7 to 4.
- JUNE 1 Base ball team won from Holland. What's going to happen?
- JUNE 13 $\Gamma \Delta T$ dance at St. Cecilia.
- JUNE 20 Junior reception.
- JUNE 27 Commencement exercises at the Auditorium.

MK G 3795. G7





Advertisements.

We heartily recommend our
advertisers as the most re-
liable business firms in the
city of Grand Rapids, and as
worthy of your patronage,
because of their loyal sup-
port of this publication. . .



Hundreds

Of gentlemen who live in the large cities of the country, wait until they come to Grand Rapids to buy their furnishing goods of us. Because we enjoy the reputation of carrying such goods as a gentleman would be pleased to wear.

.....Our prices are low, quality considered.....

*Gardiner & Baxter,
53-55 Monroe Street.*



Young Men AND Women!

The BUSINESS World
Requires YOUR Services.

THE
McLachlan University
BUSINESS

PREPARES AND PLACES **YOU**
in PAYING Positions.

SALARIES PAID STUDENTS placed by this school during past 12 months amounts to over **\$103,000.00** per annum. . . .

WHY NOT begin now?

CATALOGS FREE. VISITORS WELCOME.

D. McLachlan & Co. 19-25 South Division Street.

M. B. Wheeler Electric Co.

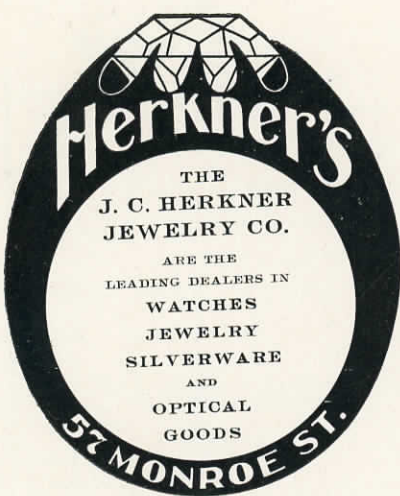
101 Ottawa Street

ELECTRICAL SUPPLIES

AND NOVELTIES



*You should buy your supplies of the leading supply house
in this city.*



Herkner's
 THE
**J. C. HERKNER
 JEWELRY CO.**
 ARE THE
 LEADING DEALERS IN
 WATCHES
 JEWELRY
 SILVERWARE
 AND
 OPTICAL
 GOODS
57 MONROE ST.

*WE are Headquarters for a
 General Line of—*

*Dry Goods, Carpets,
 Cloaks, Etc.*

Sole Agents for

Butterick Paper Patterns.



*Let us show you our lines
 before you buy.*



HERPOLSHEIMER CO.

*CHARLES S. HAZELTINE, President.
 CORNELIUS CRAWFORD, Vice-President.
 LEE M. HUTCHINS, Secretary and Treasurer.
 HENRY B FAIRCHILD, General Manager.*

*Hazeltine & Perkins
 Drug Co.*

42-44-46 OTTAWA STREET
 89-91-93-95-97 LOUIS STREET

Wholesale Druggists



*Importers and Jobbers in Druggists' Sundries
 and Manufacturing Chemists,
 Drugs, Medicines, Chemicals,
 Paints, Oils, Varnishes,
 Druggists' Glassware.*

*Fine Imported and Domestic
 Wall Paper and Fabrics*

*Including Brocades, Tapestries, Cretonne,
 Lace Curtains, Muslins, Etc.*



R. A. BARNARD CO.

69-71 Pearl Street.

Grand Rapids, Michigan.



*We are prepared to do Re-upholstering and Re-finishing of all
 kinds in the best manner. Estimates given on the
 entire Furnishing and Decorating of houses;
 also on Repairing and Re-upholstering
 of Furniture.*

BY PLACING THE

UNION LABEL on your printing you will increase your sales and your income; you will assist the employer of printers to pay decent wages, which will benefit the Banker and Grocer, the Real Estate Man and Clothier, as well as every one else. . . .

NO EXTRA CHARGES

For placing the LABEL on your printing; have it appear on all your work.



MADE IN SIZES TO SUIT ALL KINDS OF WORK



PRINTING OFFICES USING THE UNION LABEL:

Dean-Hicks Printing Co.
 Seymour & Muir Printing Co.
 Grand Rapids Engraving Co.
 West Michigan Printing Co.
 Stanton Printing Co.
 White Printing Co.
 Dickinson Bros.
 Powers-Tyson Printing Co.
 The James Bayne Co.
 Martin & Wurzburg.
 Hensen Printing Co.

Workman Printing Co.
 Grand Rapids Printing Co.
 Herman A. Toren.
 U. Grant Clarke.
 Johnson & Gibbs.
 Schuil Printing Co.
 A. L. Davis.
 Wm. Redmond.
 Elliott & Mills.
 New Era.
 International Publishing Co.

The Evening Press.
 Grand Rapids Herald.
 The Evening Post.
 Michigan Artisan.
 Grand Rapids Furniture Record.
 Germania.
 Der Sonntagsbote.
 Grand Rapids Chronicle.
 Middle West.
 Michigan Vidette.
 The Times.



ADVERTISEMENTS



Manufacturer and Importer of
Fine French Hair Goods.

MME. HIBBARD,

Hair Dressing Parlors.

39 Monroe Street.
Phone 434.

Cole's Exclusive Glove Store

139-141 Monroe Street.
Cor. Division.

Sole Agents for the
Maggioni Francesco Gloves.
Formerly known as the
Centemerl.

We guarantee everything we sell.

Jos. Siegel, Jeweler.

12 Canal Street.

Watches, Diamonds, Jewelry, Silverware,
At the lowest prices in the city.



Phones, Bell Main 244.
Citizens' 224.

J. S. Crosby & Co.

Insurance.

Barnhart Building,
23-33 Ionia Street, Cor. Louis.

Our coffee roasted fresh every day
in our new roaster.

FERRIS'
New York Tea Co.

157 Monroe Street.

Telephone, Office, 305-1r.
Telephone, Residence, 305-3r.

P. McCallum,

Undertaker.

91 PEARL STREET.

Special attention given to repairing.

W. D. WERNER,

90 Monroe Street.
Opp. Morton House.

Diamonds, Watches and Jewelry.

P. Steketee & Sons.

Dry Goods and
Gents' Furnishings.

79 to 83
Monroe Street.

DR. H. D. DE WAR,

Dentist.

Telephone 82.

Office, 501 Widdicomb Bldg.

Grand Rapids Floral Co.



Flowers for Weddings, Funerals and Parties.
Cut Flowers and Fine Potted Plants.

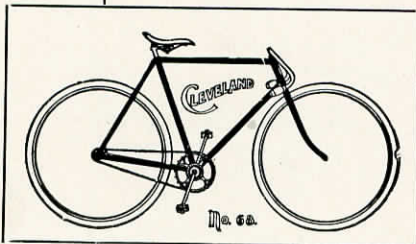


Greenhouse—Cor. East St. and Burton Ave.
Store—149 Monroe Street.

Telephones 995.

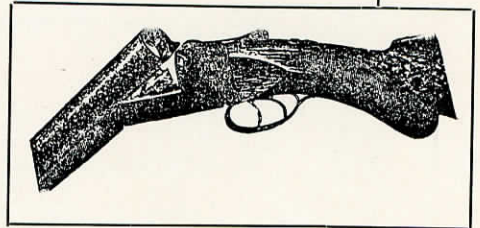
SEE US

WHEN YOU WANT A



BICYCLE, GUN,
REVOLVER,
FISHING ROD,
FOOT BALL,
BASE BALL,
TENNIS,
RACKET,
PING PONG SET,
POCKET KNIFE,
RAZOR,

or anything in the line of
Athletics or Sportsmen's
Supplies.



Our line of Bicycles embodies such well known makes as the "Cleveland" and "Rambler." They cost no more than many others not so well known—and not so good. It pays to buy a reliable Bicycle from a responsible dealer. Our line of Athletic Supplies is complete and up-to-date. Our aim is to make this your trading place. We aim to sell only good goods at reasonable prices, and to treat you right,

Ping Pong Sets
\$1.00 to \$10.00.

W. B. JARVIS CO., Ltd.

"Sportsmen's Headquarters."

The Old National Bank

of Grand Rapids, Mich.

FROM REPORT OF CONDITION FEB. 25, 1902.

Loans and Investments,	-	-	-	-	\$4,055,441.40
Bank Building,	-	-	-	-	159,298.30
Cash and Exchange on hand,	-	-	-	-	1,175,630.05
Capital Stock and Surplus,	-	-	-	-	1,118,632.77
Deposits,	-	-	-	-	4,080,492.07

Officers :

J. M. BARNETT, President. WILLARD BARNHART, Vice Pres. HARVEY J. HOLLISTER, Cashier.
 CLAY H. HOLLISTER, Assistant Cashier. HOYT G. POST, Auditor.

Directors :

James M. Barnett, Willard Barnhart, Jacob Cummer, Jos. H. Martin, W. R. Shelby, E. G. Studley, Wm. Judson
 L. H. Withey, E. Crofton Fox, Geo. C. Peirce, H. J. Hollister, W. D. Stevens, Clay H. Hollister.

*The Superiority of the
 PHOTOS*

*Made at the Hamilton Art Gallery
 is evident to those who know
 and appreciate
 Artistic Photography*



Hamilton's Art Gallery

79 Canal Street

Grand Rapids, Mich.



CORL, KNOTT & CO.

EXCLUSIVE
IMPORTERS OF

MILLINERY.

AGENTS FOR KNOX & PHIPPS
READY-TO-WEAR STREET AND SUIT HATS.

20-22 NORTH DIVISION ST.

LIVINGSTON HOTEL

HEADQUARTERS FOR
HIGH SCHOOL BANQUETS,
ATHLETIC TEAMS, ETC.



FINEST TURKISH BATHS,
AND ELECTRIC BATHS,
IN WESTERN MICHIGAN.

SUNDAY DINNERS

AT 5:30 P. M.
A SPECIALTY.
ONLY 50 CENTS
WORTH \$1.00.

GIVE YOUR SERVANTS A REST AND YOURSELF A PLEASANT CHANGE.

**CITIZENS
TELEPHONE
COMPANY**

—A HOME INSTITUTION
—OWNED IN WESTERN MICHIGAN
—CONTROLLED by your NEIGHBORS



*Rates for Exchange Service Regulated
by Accepted Franchise.*

*Local Service Greatly Superior in Number
of Phones Connected and Quality.*

*Toll Line Service to many Scores of
Exchanges and Toll Stations
Not Otherwise Reached.*

*When you want to talk
in or out of the city,*

TRY THE

CITIZENS' SERVICE.

**Wright,
Kay & Co.**

MANUFACTURERS
OF
HIGH GRADE

*Fraternity Emblems
Fraternity Jewelry
Fraternity Novelties
Fraternity Stationery
Fraternity Invitations
Fraternity Announcements
Fraternity Programs*





Send for Catalogue and Price List.
Special Designs on Application.

140-142-144 Woodward Ave.


DETROIT, MICH.




GEO. STARK & BEECHER
TAILORS
84-86 MONROE STREET


PUTNAM'S

CHOCOLATES
The Putnam Candy Co.

FINEST TEAS AND COFFEES
FRESHEST
FRUITS AND VEGETABLES

E. D. WINCHESTER
214 E. BRIDGE ST. TEL. 518

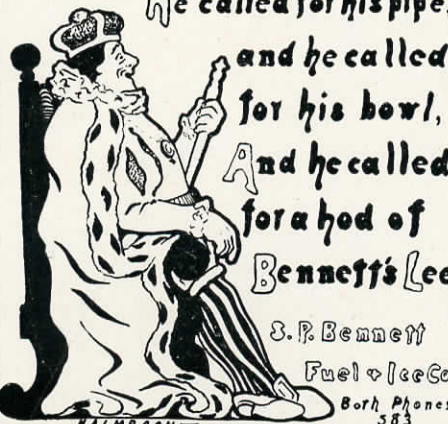
PERSONAL SERVICE
NO UNDERSTUDIES
NO SUBSTITUTES
❖
H. M. Woodard
Photographer
Wonderly Building

GO TO
COOPER'S
FOR
FINE CHOCOLATES
73 CANAL ST.

THE FINEST LINE OF 1-LB. BOX GOODS

Grand Rapids Electric Co.

ELECTRIC LIGHT
AND POWER
CONTRACTORS,
ELECTRICAL SUPPLIES.

9 South Division Street.



Old King Cole was a merry old soul
 And a merry old soul was he.
 He called for his pipe,
 and he called
 for his bowl,
 And he called
 for a hod of
 Bennett's Lee.



S. P. Bennett
 Fuel & Ice Co.
 Both Phones
 583

KALMBACH

CLEAN SODA.



Our soda water is purer and sweeter than the waters of a mountain brook! Come and see it served from a

20th Century Sanitary Fountain

and you will relish good soda.
 Everything in plain sight. . .



THE HILL DRUG STORE,

O. A. FANCKBONER, Prop.
 Cut Rate Pharmacy, 209 E. Bridge St. cor. Clancy

H. LEONARD & SONS

IMPORTERS AND
 DEALERS IN

CHINA
 CUT GLASS
 AND
 PRESENTATION
 GOODS

CORNER
 FULTON AND COMMERCE STS.
 GRAND RAPIDS

WALL PAPER, PAINTS AND OILS.



Our stock consists of the best goods produced
 and is sold at money-saving prices.



PAPER HANGING AND
 PAINTING BY EXPERTS.



We Frame Pictures to order, and carry a
 large line of Unframed Pictures.



C. L. HARVEY & CO.
 59 MONROE ST.

OUR STRONG POINTS.



The WHITE Wagons

Pure, WHITE Ice

and a clean, WHITE way of

doing business. Test them.

Consumers' Ice Co.

Office, 23 Monroe Street.

Both Phones, 349.

WHEN you wish engraved calling cards, wedding or party invitations, we shall be pleased to quote our prices. As we do this work ourselves, we can fill orders on short notice. We also carry a line of correspondence papers in the latest styles and can give you the best grade of work in correspondence dies and stamping.

The engravings in this book are of our production.



DICKINSON BROS.

1-3-5 Pearl Street.



Tibbs'

PERFECT FITTING BRACES
ADD GRACE OF CARRIAGE AND PRE-
VENT CONSUMPTION.
ALL SHOULD WEAR THEM.

Tibbs'

EASY WEARING TRUSSES
WILL RETAIN THE INTESTINE AND
CURE RUPTURE.
PRIVATE ROOM FOR FITTING.

CALL AT
TIBBS' DRUG STORE.
25 S. DIVISION ST.

GO TO

HENRY SMITH

FOR THE

Choicest ROSES and other
Cut Flowers, Floral Designs,
Wedding Decorations and
all kinds of Plants.



COR. MONROE AND DIVISION STS.
GRAND RAPIDS, MICH.

MORRISON'S
62 MONROE STREET,
GRAND RAPIDS, MICHIGAN.

CLOAKS — SUITS — FURS

SPRING AND SUMMER
WEARING APPAREL



Mohairs, Etamines in White,
. . . Black, Navy and Gray, . . .
Linsens in Natural Color, and
White Cord Piques, Jackets,
Wraps, Tailored Suits and
Lined Skirts at One-Third Off



ONE PRICE, MARKED IN PLAIN FIGURES.

WEDDINGS AND FUNERALS A SPECIALTY.

A. N. ALBEE

PROPRIETOR OF



Livery, Hacks & Boarding Stables

NO. 9 CRESCENT AVE.

TELEPHONE 415.

GRAND RAPIDS, MICH.



The Seymour & Muir Printing Co.

invite you to call on them when in need of
first-class, up-to-date

Printing of every description

Wedding Stationery, Programs, Calling Cards.

This book is a sample of our work.

At Home

every business day in the year

49 Lyon Street.

CHICAGO CANDY CO.

*Best Candies,
Sodas and Sundaes*

—IN THE CITY



NEW PARLORS
FINELY FURNISHED.

Monroe St.

Young Women's Christian Association

84 MONROE STREET



LUNCH ROOM—Home Cooking, reasonable prices.
Rest room furnished with couches.
Reading Room.

PHYSICAL EDUCATION—Experienced instructors, well-equipped Gymnasium, classes arranged to suit the needs of adults and children.
Normal Course including instruction in Anatomy and Psychology.

DOMESTIC SCIENCE—Instruction given in the theory and practice of cookery by competent teacher.
Students prepared for advanced work in technical schools.



Binders of this book.

J. Chilwer & Co.

Blank Book
Manufacturers.

Phone 255.

49 Lyon St., Grand Rapids, Mich.

BOTH PHONES 501

W. A. DORLAND
DENTIST

602 PYTHIAN TEMPLE

M. FRIEDMAN & CO.

DRY GOODS
CLOAKS
MILLINERY

41-43 MONROE ST.



Get that
which Trial
and Test have
Proved the
BEST.

CITIZENS PHONE 1539

T. VANDERSTOLP
DENTIST

35 MONROE ST



W

ITTERS
ASHES
HITE



Phones 1585.



A PICTURE BOOK
 ENTITLED
“Michigan in Summer”

ABOUT THE SUMMER
 RESORTS ON THE

*Grand Rapids &
 Indiana Railway*
 “THE FISHING LINE”

Will be sent to any one upon request. It is a handsome booklet of forty-eight pages, containing 280 pictures of the Famous Michigan Summer Resorts:

PETOSKEY, MACKINAC ISLAND, BAY VIEW, OMENA, TRAVERSE CITY,
 CHARLEVOIX, HARBOR POINT, WALLOON LAKE, ODEN, NORTHPORT,
 WEQUETONSING, ROARING BROOK, NE-AH-TA-WAN-TA, LES CHENEUX ISLANDS.

Gives list of hotels and boarding houses, rates by day and week, railroad fares, maps, and G. R. & I. train service. . . . Fishermen will want “Where to go Fishing.”

*C. L. LOCKWOOD, G. P. A.,
 GRAND RAPIDS, MICH.*

CENTURY
 FUEL Co.

DEALERS IN
 ALL KINDS OF

COAL, COKE
 AND
 WOOD



MAIN OFFICE, 25 FOUNTAIN ST.
 BRANCH OFFICE, WINEGAR FURNITURE CO.
 BOTH PHONES 520.

ALWAYS TO THE FRONT

*We still insist that our
 stock of CUT GLASS,
 . . . SILVERWARE, . . .
 JEWELRY and CLOCKS
 is one of the best in this
 city. . . We are also
 positive that the goods
 are the BEST and the
 PRICES ARE LOWEST*

ZIERLEYN & Co

GOLDSMITHS SILVERSMITHS

85 MONROE STREET



WHAT IS THE

Y. M. C. A. ?

A
YOUNG MEN'S
CLUB

WITH
WHOLESOME
SURROUNDINGS

A DOWN TOWN
HOME
FOR YOUNG MEN

LARGEST
GYMNASIUM
IN THE CITY

PLUNGE AND SHOWER
BATHS

IF

YOU DO NOT
KNOW WHAT

THE YOUNG MEN'S CHRISTIAN ASSOCIATION IS,
COME IN AND LET US EXPLAIN IT TO YOU AND SHOW YOU AROUND THE BUILDING.

SHUFFLE BOARDS
AND
READING
ROOMS

Peoples Savings Bank

Grand Rapids, Mich.

98 Monroe St.



Assets, \$2,000,000.00



Pays 3½ per cent. on Certificates and 3 per cent. on Savings Deposits.



Officers :

Thomas Hefferan, President.	Wm. Alden Smith, Vice President.
	Samuel M. Lemon, Vice President.
Charles B. Kelsey, Cashier.	M. D. Hoogesteger, Ass't Cashier.

Directors :

Thomas Hefferan,	Charles B. Kelsey,	A. D. Rathbone,
Wm. H. Gay,	Wm. Alden Smith,	Dudley E. Waters,
W. H. Anderson,	Christian Bertsch,	John Murray,
Eugene D. Conger,	Reuben Bloomer,	Reuben Hatch,
John W. Blodgett,	J. Boyd Pantlind,	Samuel M. Lemon.



WELCOME
TO
CLASS
AND
SCHOOL

GRAND RAPIDS
RAILWAY Co.

A CLASS OR SCHOOL PIC-NIC
in one of the Beautiful Parks would
be in good taste for the closing days
of school. *Special Cars* can be secured
for the occasion, so all may go to-
gether, if you will call on or address

G. S. JOHNSON,
Vice-President and General Manager.

Send one cent stamp for Handsome Book of Views of Resorts
:————— in and near Grand Rapids —————: