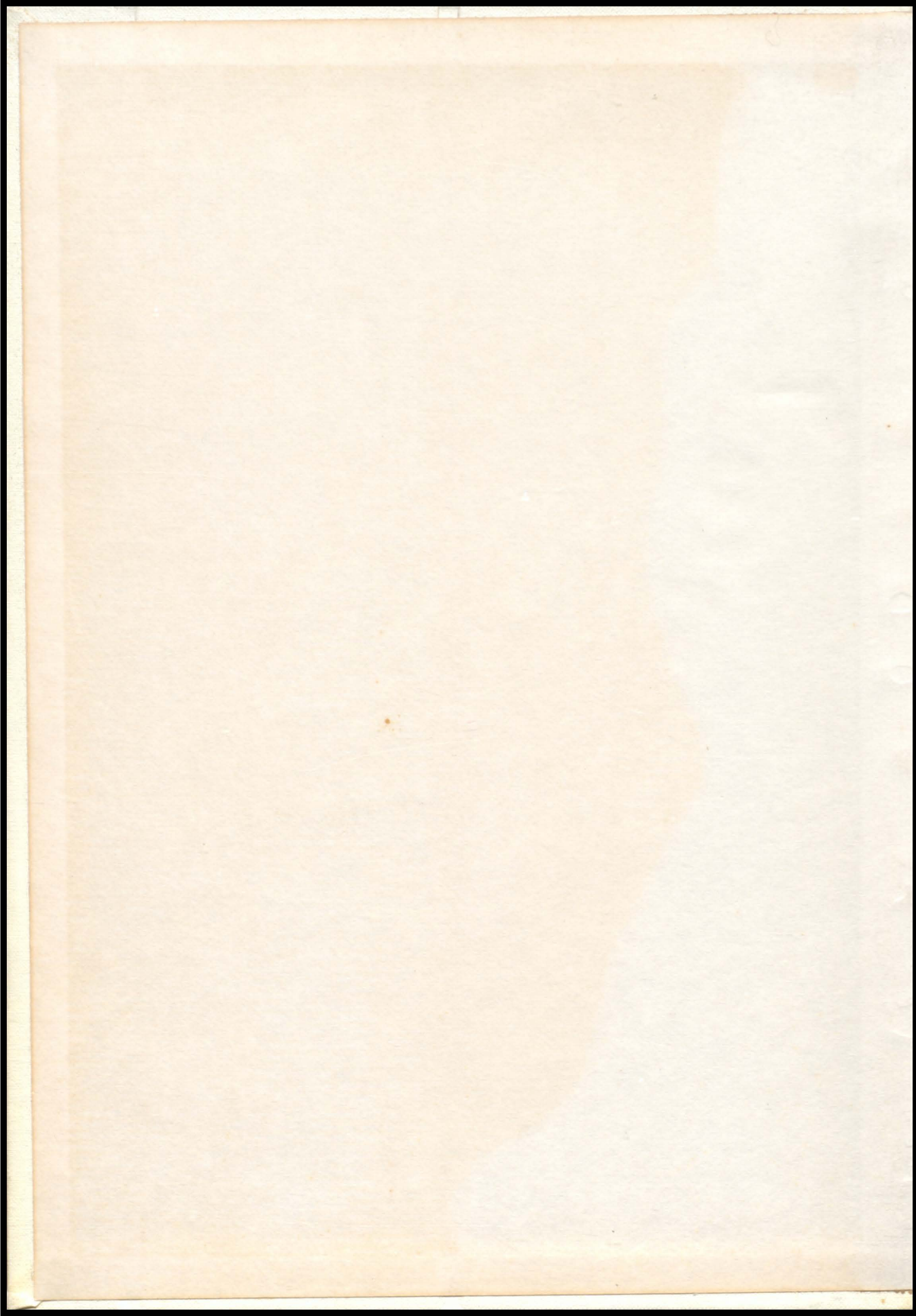
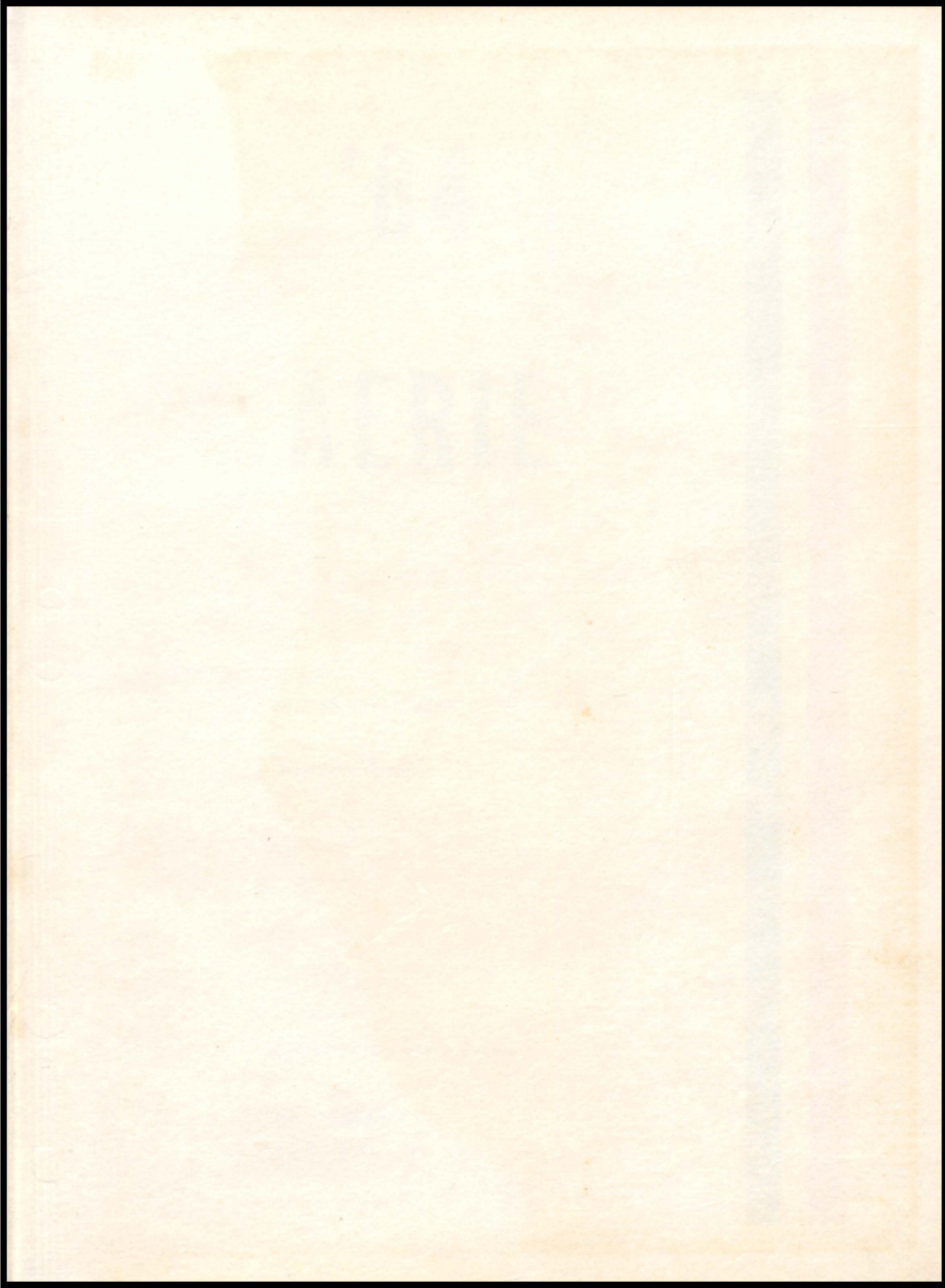
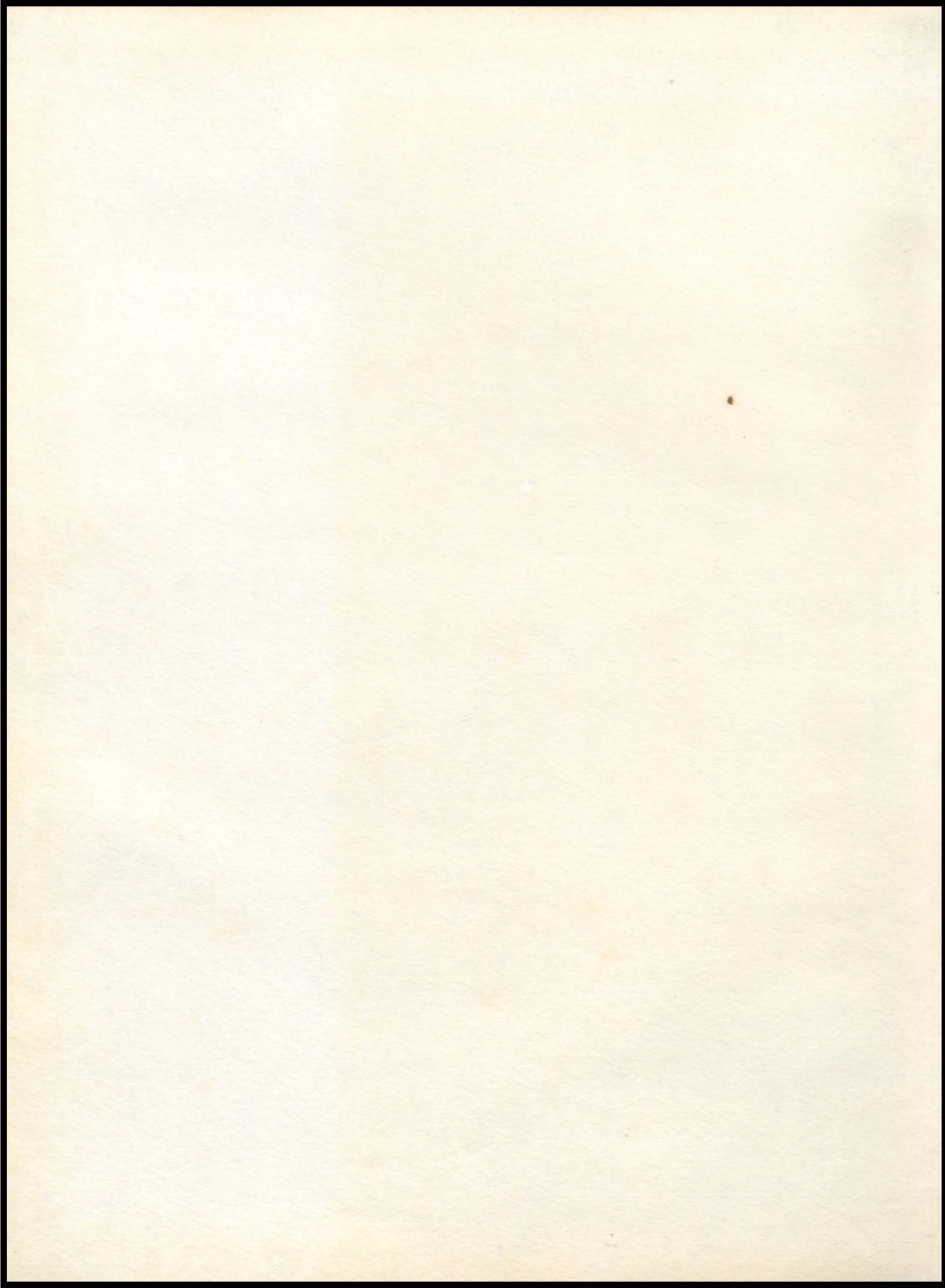


1964

A  
E  
R  
I  
E







'64

# AERIE

MILTON HIGH SCHOOL

Alpharetta, Georgia

*Co-Editors*

Sandra Henderson – Susan Manning

*Business Managers*

Barbara Mathis – Larry Manus

T  
H  
R  
O  
U  
G  
H  
  
T  
H  
E  
  
Y  
E  
A  
R  
S  
  
W  
E  
,  
V  
E

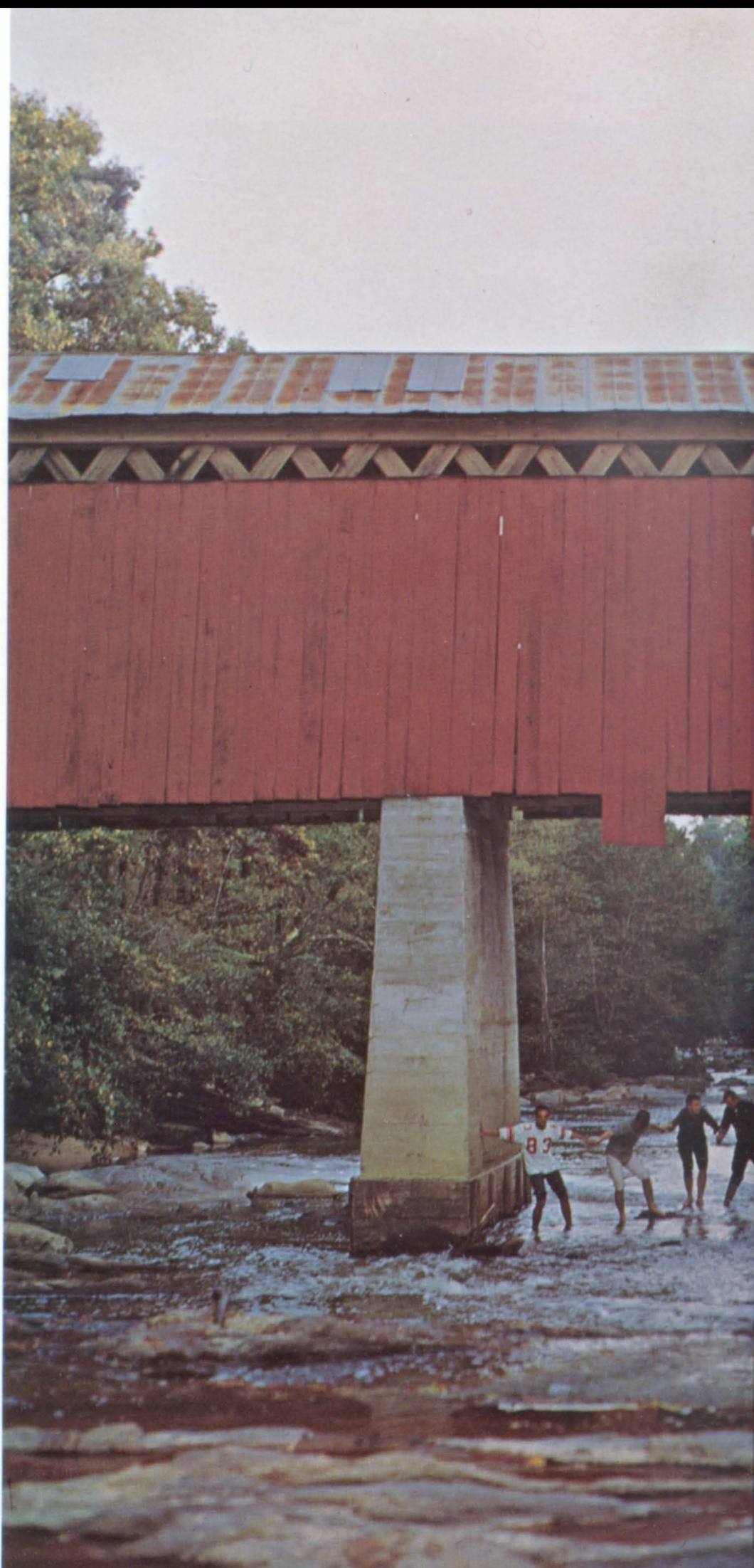
S  
P  
E  
N  
T  
  
T  
O  
G  
E  
T  
H  
E  
R



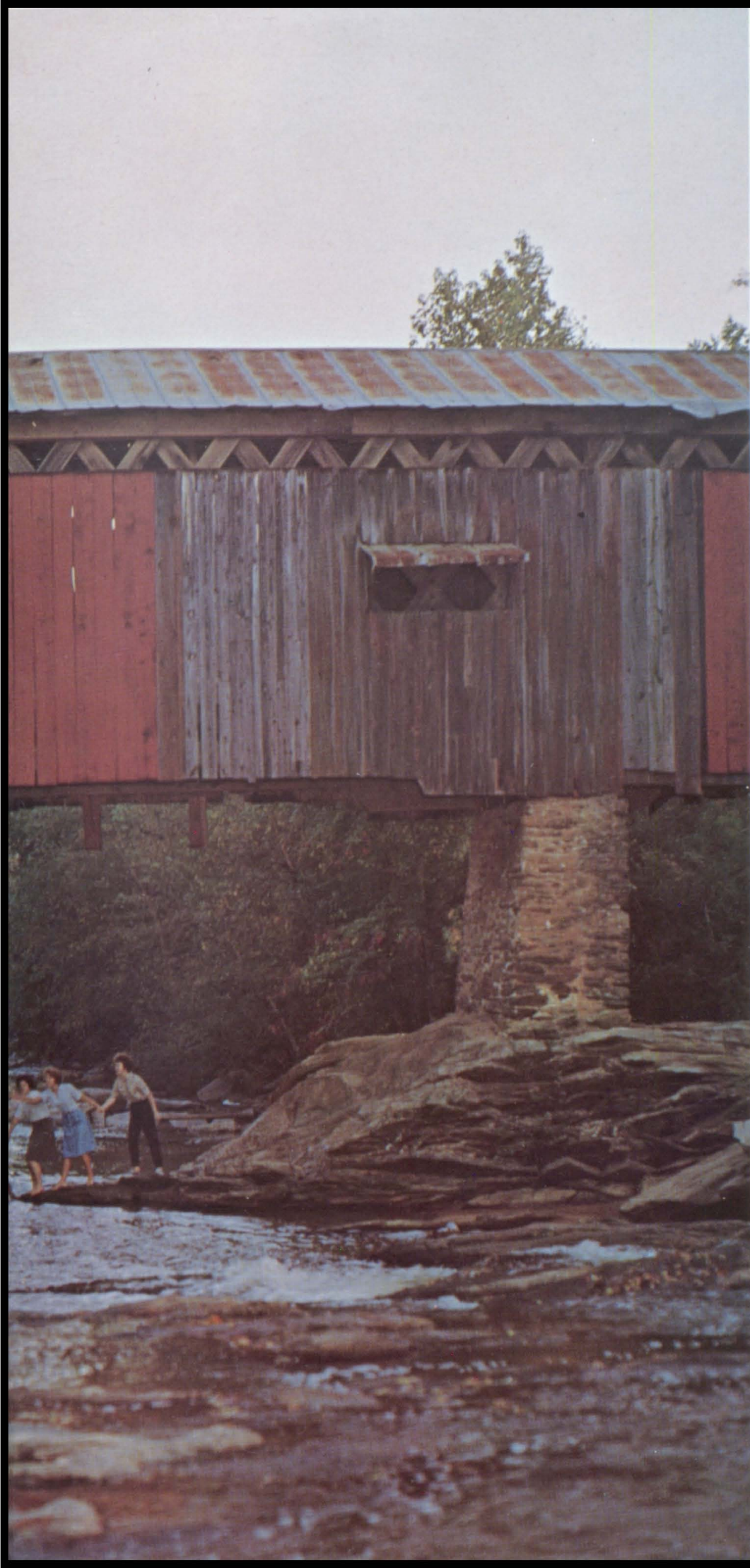


P  
R  
O  
U  
D  
L  
Y  
  
W  
E  
  
R  
E  
C  
A  
L  
L

D  
A  
Y  
S  
  
O  
F  
  
F  
A  
I  
R  
  
A  
N  
D  
  
S  
T  
O  
R  
M  
Y  
  
W  
E  
A  
T  
H  
E  
R







T  
H  
O  
U  
H  
A  
S  
T  
G  
L  
A  
D  
D  
E  
N  
E  
D  
A  
L  
L



# MILTON HIGH SCHOOL

TENDER STRONG AND TRUE

FAITHFUL DAUGHTERS ALL



# MILTON HIGH SCHOOL

FAITHFUL SONS AND  
OUR VOWS RENEWED

# FOREWORD

The high standards which have been established at Milton will be our goal for the future years. The various phases of high school life at Milton which have helped to established these standards will be presented through the pages of this '64 *Aerie*.

The activities of Milton are so often overlooked, but in years to come when they will no longer be a part of our lives, they will be looked upon and missed greatly. Without them our lives would not be fully complete. We have enriched ourselves as individuals by being students of Milton High School.

Milton students are greatly indebted to our new principal for the priceless experiences he has offered us. Mr. John W. Grindle has bolstered school spirit which will remain always.

The editors and the entire staff of this 1964 *Aerie* hope to capture memorable events and activities that you will discover are yours.

# CONTENTS

DEDICATION



SENIORS



FEATURES



CLASSES



ADMINISTRATION



CLUBS



SPORTS



ACTIVITIES



ADVERTISEMENTS





# DEDICATION

1964 AERIE

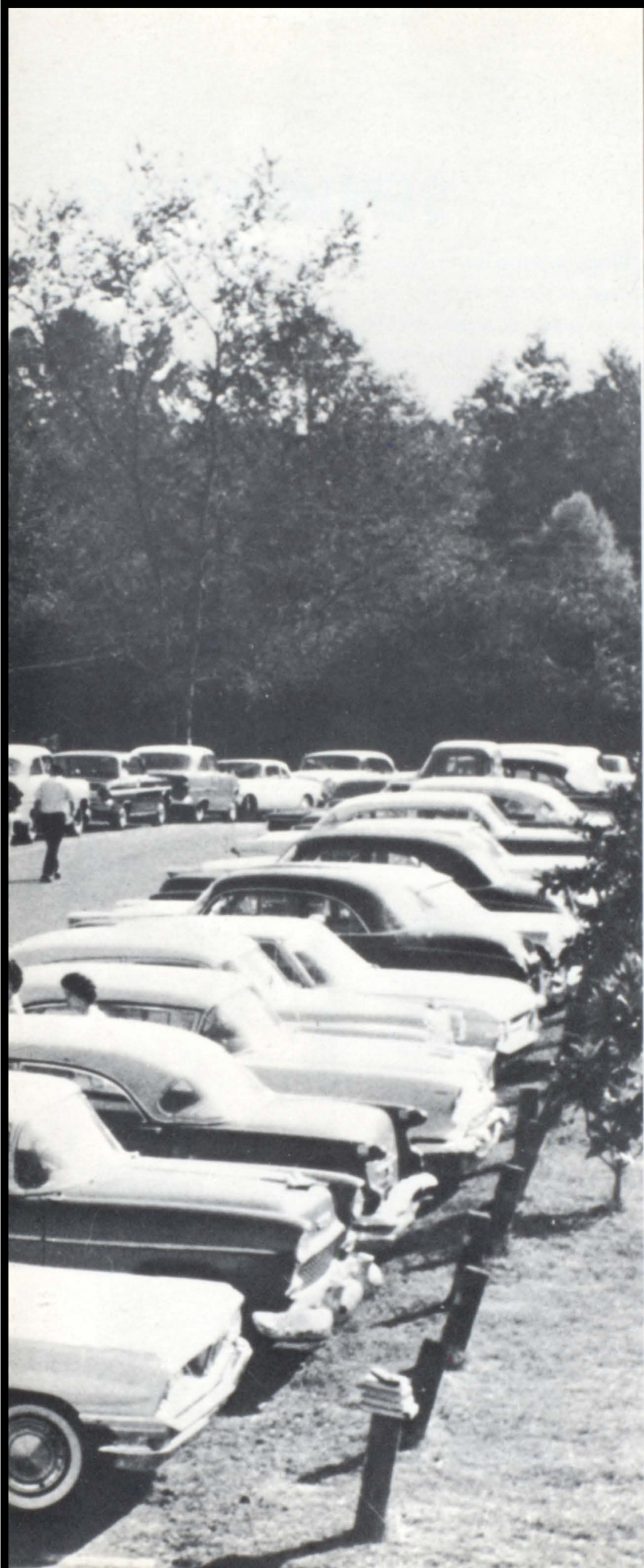
Mr. Lucien Batson



Though it has only been a decade since you arrived at Milton, you have influenced many students and have made a lasting impression upon those who have come in contact with you... By your keen mind, unequivocal trust, undying desire to teach, and dynamic personality you have earned the admiration of the student body, fellow teachers, and the dedication of the 1964 AERIE.







# S E N I O R S

- EDITOR -  
DONNA ELLIS

# SENIOR LOG

- Aug. 26 - First to register as a senior - Kathy Kendrix.
- Sept. 2 - Labor Day Holiday, but we haven't started yet!
- Sept. 3 - First day of our big year! James Martin brings the roster to 89. (45 girls; 44 boys).
- Sept. 11 - Rings are ordered.
- Sept. 12 - Magazine drive is under way.
- Sept. 16 - We learn about Chaucer.  
We hear that Brenda Dinsmore has married.
- Sept. 20 - F.F.A. trip - who went?
- Sept. 26 - Space age Musical attended by Sue, Gay, Peggy, Brenda, Troy, Roger, and Carroll.
- Sept. 27 - School out one-half day. Why? ("Fair" for students; Teachers' meeting for you know who).
- Sept. 27 - We beat Roswell! (There were reporters there.)
- Sept. 30 - Buddy Carroll is minus his "wisdom" teeth! Don't mention it!
- Oct. 1 - Eighty-three saw "Auntie Mame" and gave spontaneous plaudits with the opening night crowd.
- Oct. 4 - Magazine numbered 1,342 subscriptions have been sold. (Money wise \$5,036). Deryl Ingram brought in \$252. Nineteen now belong to the Curtis \$100 Club.
- Oct. 6 - The Dodgers won the World Series.
- Oct. 10 - School Echoes
- Oct. 11 - Homecoming
- Nov. 1 - First quarter is over.
- Nov. 6 - College night at Sandy Springs.
- Nov. 13 - Rings arrive! Who said 13 was unlucky?
- Nov. 14 - Saw "Summer and Smoke" by Tennessee Williams.
- Nov. 27 - Out for turkey day festivities!
- Dec. 2 - This time next month will be January 2, 1964.
- Dec. 20 - We are out until next year.
- Jan. 2 - School again!
- Jan. 3 - Jim Ellis thinks it is still 1963.
- Jan. 16 - Attended Eugene O'Neill's "Beyond the Horizon".
- Jan. 15, 16, 17 - Examinations! This year there were no exemptions! (County rule not dumbness.)
- Jan. 20 - Music clinic for band.
- Feb. 12 - Georgia Day
- Feb. 22 - Caps and gowns measured.
- Feb. 21 - Cards and invitations ordered.
- Feb. 22 - George Washington's birthday.
- Feb. 29 - This day marks it Leap Year. Who is leaping?
- Mar. 6, 7 - Choral Music Festival.
- Mar. 20 - Senior Play. Teachers go to G.E.A. We have a holiday!
- Mar. 27, 31 - Spring Holidays. What did we do?
- Apr. 1 - April Fool's Day.
- Apr. 15 - North County High School  
Music Festival Rehearsal
- Apr. 16 - We perform at the Music Festival!

# OF EVENTS

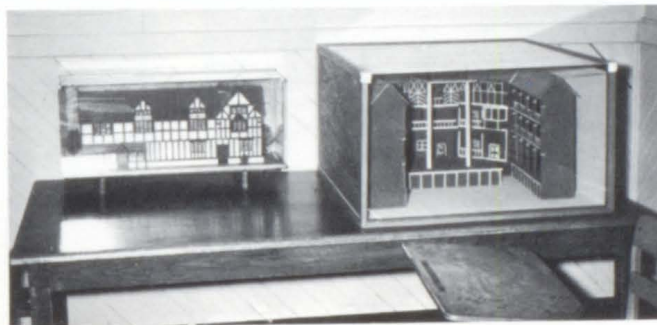
- Apr. 24, 26- Georgia Association of Library Assistants at Jackson Lake
- May 14 - Saw "Mad Woman of Chaillot" by Giraudoux.
- May 17 - Commencement Sunday.
- May 20 - Graduation Day!



*Our Mama!*



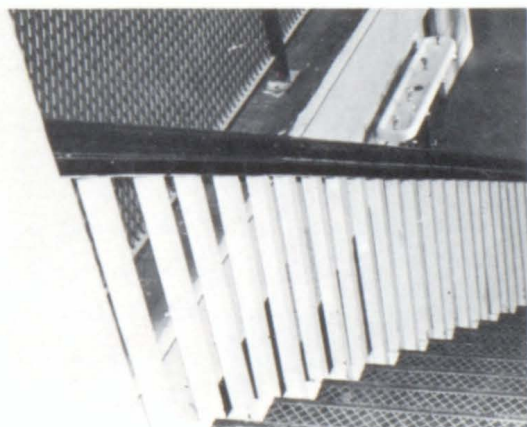
*Larry and Donna,  
Boy, What Seniors!*



*Good old Shakespeare!*



*Man, What A Privilege!*



*Our Favorite Stairs?*

## SPONSORS

MISS RUBY CRAWFORD  
 MR. B. C. SANDERSON  
 MR. NORMAN BROADWELL  
 MR. J. B. TATE



Just tolerating eighty-eight seniors seems like a chore, but our sponsors have made it seem a pleasure. Besides teaching us and escorting us to plays, they have boosted us on to the final victory, graduation. We, the seniors of '64, would like to thank you.

## MASCOTS

DOUG HANEY  
 VICKIE STEPHENS



## SENIOR

## OFFICERS

*President*.....JIMMY HAMRICK  
*Vice-President*..... BRENDA HANSARD  
*Secretary*..... JULIE McCLAIN  
*Treasurer*.....DAVID JONES  
*Sergeant-at-Arms*..... JEROL GARRISON



CARROLL ANDERSON

*"Carroll"*



JANICE BARFIELD

*"Janice"*

Transferred 1960; F.H.A. 60-64, Reporter 62; 4-H Club 60-62; F.B.L.A. 63-64; Cheerleader 62-64; Curtis \$30 (certificate) Award.



JEANETTE BARFIELD

*"Barfield"*

Transferred 1960; F.H.A. 60-64; F.B.L.A. 64; Aerie Staff 63-64; Curtis \$30 Club (certificate) 64



HAYDEN BEARDEN

*"Hayden"*

4-H Club 58; Band 59-64; Varsity Football and Track 62-63.





JOAN BELL

*"Joanie"*

Girls' Chorus 61-62; Ad Staff 63-64; F.B.L.A. 63-64.

LARRY BENNETT

*"Webb"*

Class President 59-63; Eighth Grade Chorus 59-60; Honor Roll 59-63; Small Ensemble 62-63; All State Chorus 62; Mixed Chorus 60-63; Beta Club, Vice-President 62-64, President 63-64; Jr. Civitan 62-63; Sewanee Club Award 63; Language Club 61-63; Senior Superlative 63-64; School Echoes Staff 63-64; Dramatics Club 63-64; Leadership Conference 62; Annual Staff 62-64; Quill and Scroll 63-64.



JEAN BISHOP

*"Popcycle"*

Basketball 60; 4-H Club 61-62; F.H.A. 60-61; Cheerleader 62-64, Co-Captain 63, Captain 63-64; Science Club 61-62; Fr. Civitan 63-64; Annual Ad Staff 62-63.



LINDON BRANNON

*"Tink"*

Transferred 1961; Track 61-63; F.F.A. 62-63.



BUDDY CARROLL

*"Buddy"*

Football 59-60, 61-62; Track 63-64; Debating Club 62-63; F.B.L.A. 63-64.



ROGER CASTLEBERRY

*"Strawberry"*

Advanced Band 59-63; 8th Grade Football 59; B-Team Football 60-61; Varsity Football 62-63; Track Manager 62-63; Varsity Football Manager 63; Varsity Basketball Manager 63-64.



DONNA CHESTER

*"Donna"*

Majorettes 62-63, Captain 63; Band 63-64; School Echoes Staff, Typist 63-64; Ga. Scholastic Press Asso. Convention 64; Quill and Scroll 63-64; F.B.L.A. 63-64; Junior Civitan Club 62-64; Dramatics Club 63-64; Aerie Ad Staff 62-63; Science Club 61-63; F.H.A. 60-63; Homeroom Vice-President 61-62; 4-H Club 60-62; Pep Squad 61-62; Honor Roll 61; Candidate for Class Secretary and Treasurer; Girls' Chorus 61-62; Beginning Girls Chorus 61-62; Treasurer; Homeroom President 60-61; 8th Grade Basketball 60-61.

SHARON CHRISTOPHER

*"Punk"*

Transferred 62; F.T.A. 62-64, Vice-President 63-64; Student Council 63-64, Co-President; Beta Club 62-64; Quill and Scroll 62-64; Aerie Staff, Clubs 62-63; Language Club 62-63; Mixed Chorus 62-63; Dramatics Club 63-64; School Echoes 63-64, Make-Up Editor; Curtis \$100 Club; Senior Superlative; Homecoming Court 63; Ga. Girls' State 63; U. G. Certificate of Merit 63.

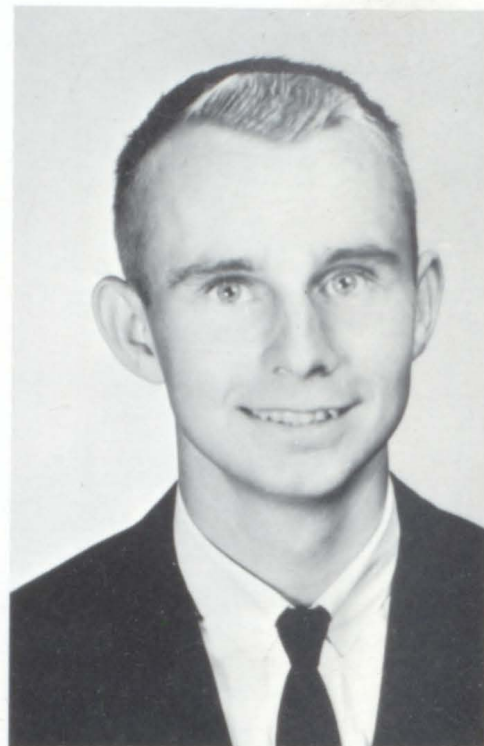




BARRY COLEMAN

*"Barry"*

Football 60-63; Track 62-63; Junior Civitan 63-64; Baseball 64; Science Club 62-63; Library Club 61-62; Junior Red Cross 62-63.



LAMAR COX

*"Lamar"*

Band 59-64, President 63-64; Red Cross 63-64; B-Team Football 61-62.

MAHALA CRISLER

*"Hala"*

8th Grade Basketball 59-60; Band 60-64, Secretary 63-64; 4-H Club 59-62; Majorette 62-64; Beta Club 61-64; Science Club 62-63; Language Club 62-63; Dramatics Club 63-64; School Echoes 63-64; Certificate of Merit, Univ. of Georgia 63; Georgia Girls' State 63; Quill and Scroll 63-64; Clubs Editor Annual Staff 63-64.



HOWARD DAY

*"Tiny"*

Basketball 59-63; Curtis \$100 Club Award.





JEAN DAY

*"Jeanie"*

8th Grade Chorus 59-60; Girls' Chorus 60-61; Mixed Chorus 62-63; Mixed Ensemble 62-63; Girls' Varsity Basketball 61-64; Co-Captain 63-64; NOMA Certificate 61-62; Pep Squad 61-62; Dramatics Club 62-63; F.H.A. 62-63, Secretary 62-63; Aerie Staff 62-64; F.B.L.A. 63-64, Vice-President; Candidate for Homecoming Queen 63-64; Senior Superlative 63-64.



HELEN DINSMORE

*"Helena"*

F.H.A. 59-63; Music Club 60-61; 4-H Club 62-63; Dramatics Club 62-64; F.B.L.A. 63-64; Mixed Chorus 63-64; Quill and Scroll 63-64; School Echoes 63-64.



GAY EDWARDS

*"Happy"*

Junior Red Cross 61-62; Pep Squad 61-62; F.B.L.A. 63-64; Aerie Staff, Faculty 63-64.

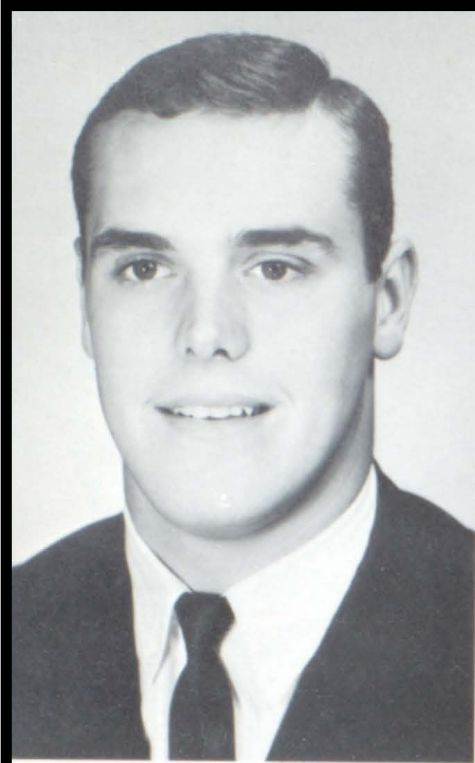


DOUG ELLIOTT

*"Bev"*

8th Grade Football 59-60; B-Team Football 60-61; F.F.A. Reporter 59-64, President 63-64; Varsity Track 61-64.





DANNY ELLIS

*"Danny"*

Advanced Band 59-60; B-Team Football 59; Varsity Football 59-63; B-Team Basketball 59; Varsity Basketball 61-64; Varsity Baseball 61-62; Varsity Track 61-64; Student Council 59-60, 62-63; Curtis \$100 Club; Senior Superlative.

DONNA ELLIS

*"Donna"*

F.H.A. 59-60; 8th Grade Chorus 59-60; Girls' Ensemble 60-63; Girls' Chorus 60-63; Music Club 60-64; Honor Roll 60-61; Mixed Chorus 60-63; F.T.A. 61-62; Candidate Class Secretary 61-62; Varsity Basketball 61-62; Pep Squad 61-62; Quill and Scroll 62-64, Vice-President; Dramatics Club 62-64; Mixed Ensemble 62-63; Co-Chairman Jr.-Sr. Prom 62-63; Jr. Civitan Club 62-64; Circulation Staff 62-63; Certificate of Merit U.G. 63; Senior Superlative; \$100 Curtis Club; Editor of Classes, Aerie Staff 63-64; Bowling League 63.



JIMMY ELLIS

*"Jimmy"*

Jr. Civitan Club 62-64; Aerie, Ad Staff 63-64; Music Club 62-64; F.T.A. 62-64; Red Cross 61-63; Science Club 60-61.



BARBARA FOX

*"Bobbie"*

F.H.A. 59-62; 4-H Club 59-62; Annual Staff 62-63; Dramatics Club 63-64.



JUANITA FREELAND  
*"Ponjab"*  
F.H.A. 61-64; F.B.L.A. 63-64.



DAVID FULLER  
*"Professor"*  
F.B.L.A. 63-64.



JACKIE GARMON  
*"Jackie"*  
F.B.L.A. President 63-64.

JEROL GARRISON  
*"Garrison"*  
B-Team Football 60-61; Baseball 60-61; Varsity Football 61-62; Varsity Basketball 61-62; Track 61-62; Varsity Football 63-64; Track 63-64; Baseball 63-64; Aerie Staff 63-64; Student Council 63-64.





PAUL GILES

*"Paul"*

PATRICIA GRANT

*"Trisba"*

8th Grade Basketball 59; F.H.A. 60-62; Library Club 62; Language Club 61-63; Science Club 62; Aerie Staff 63; School Echoes 64; Quill & Scroll 62-64; Majorette 64; Band 64.



ANN GREEN

*"Ann"*

Girls' Chorus 60-61; F.H.A. 62-63; Dramatics Club 62-63; 4-H Club 62-63; Varsity Basketball 62-63; Pep Squad 61-62; Aerie Staff 61-62, Circulation Staff 62-63, Ad Staff 62-63; Science 62-63; F.B.L.A. 63-64.



DON HALVERSON

*"Don"*

Transferred Marist College 63; Varsity Football 63; Track 64; Varsity Basketball 63-64; Varsity Baseball 64; Dramatics Club 63-64; Jr. Civitan 63-64, Vice-President; Annual Staff 63-64; Red Cross 63-64; Senior Superlative 64.



JIMMY HAMRICK

*"Hamrack"*

Senior Superlative; Student Council 63-64; President of Senior Class; Jr. Red Cross Representative 59-60; 8th Grade Football 59; B-Team Football 60; Varsity Football 61-63, Captain 63; Baseball 63-64; Track 63-64; B-Team Basketball 61-62; Mr. Football 63; Co-Chairman Jr.-Sr. 63; Boys' State 63.



LONNIE HAMRICK

*"Lonnie"*



PEGGY HAMRICK

*"Eggy Pa"*

4-H Club 60-62; Song Leader 59-60; Fulton County 4-H Cooking Award 60; Delegate to Rock Eagle 59; 4th Place Cooking Award 60; F.H.A. 61, 63-64; Jr. Red Cross Representative 62; Jr.-Sr. Clean-up "Sky" Committee 63; Aerie Faculty Staff 63-64; F.B.L.A. 63-64; Curtis \$30 Club 63; NOMA Math Award 61.



BRENDA HANSARD

*"Brenda"*

Beginning Girls' Chorus 61; 4-H Club 60-62; F.H.A. 62-64, President 64; Beta Club 62-64, Treasurer 63, Secretary 64; Quill and Scroll 63-64; Annual Staff, Circulation 63, Editor Faculty Staff 64; Curtis \$100 Club 64; Senior Superlative 64; Senior Class Vice-President 64; Student Council 64; Univ. of Ga. Award 63.





RONNIE HANEY

*"Brain"*

F.F.A. 59-63; Library Club 61-63; Track 62-63; 4-H Club 59-60.

SANDRA HENDERSON

*"Hender"*

8th Grade Class Vice-President 59-60; 8th Grade Basketball 59-60; Girls' Chorus 59-63; Mixed Chorus 62-63; Student Council 59-63; Music Club 59-63; Freshman Vice-President 60-61; Delegate Leadership Conference 61-62; Sophomore Vice-President 61-62; Student Council Convention 62; Junior Class Vice-President 62-63; Candidate for Co-President 63; Cheerleader 62; Co-Assistant Editor of Annual 62-63; Co-Circulation Manager 62-63; Quill & Scroll 62-64; Co-Editor Annual 63-64; Senior Superlative 64; Curtis \$100 Club 63; Dramatics Club 64.



CAROLYN HOLCOMBE

*"Lynn"*

F.H.A. 59-61; F.T.A. 62-63; F.T.A. 62-63; Girls' Chorus 60-61; Majorette 61-63.



LYNN HULSEY

*"Lynn"*

F.F.A. 61-64, Treasurer 62-63, Vice-President 63-64.



DERYL INGRAM

*"Deryl"*

8th Grade Football 59-60; B-Team Football 60-61; Varsity Football 61-63; Track 62-63; Language Club 61-63; Curtis \$100 Club; Red Cross 63-64; Library Club 62-63.



DIANNE JACKSON

*"Flossy"*

4-H Club 59-64; F.H.A. 59-64; Varsity Basketball 61-62; Pep Squad; F.B.L.A. 63-64; Ad Staff on Aerie; Curtis \$100 Club.



BOBBY JOHNSON

*"Wildgoose"*

B-Team Football; Aerie Staff 61-63; Band 60-64, President 62-63; Jr. Red Cross 61-63; President 62-63.

JACKIE JOHNSON

*"Jackie"*

8th Grade Basketball 58-59; B-Team Basketball 59-61; Varsity Basketball 61-62; B-Team Football 59-61; Varsity Football 61-62.





PAUL JOHNSON

*"Paul"*

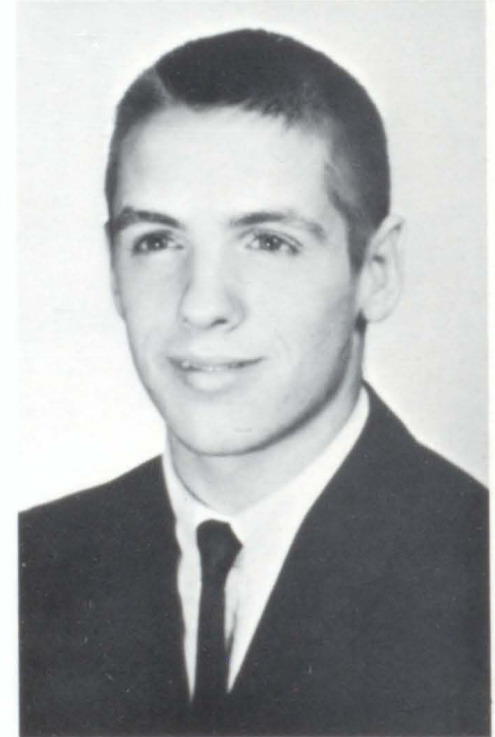
Aerie Staff 63-64; Curtis \$30 Club.



CAROLYN JONES

*"Carolyn"*

4-H Club 60-61; Science Club 60-62; F.H.A. 62; Cheerleader 62-64, Co-Captain 63-64; Dramatics Club 63-64; Junior Civitan 63-64; Ad Staff Aerie 62-63.



DAVID JONES

*"Smilie"*

8th Grade Football 59-60; 8th Grade Basketball 59-60; Science Club 61-62; Dramatics Club 61-64; Language Club 61-64; Varsity Baseball 60-64; B-Team Basketball 61-62; B-Team Football 61-62; Superlative 63-64; Student Council, Treasurer 63-64; Treasurer of Senior Class 63-64; Leadership Convention 62; Aerie Staff 62-64; Sports Editor of Echoes 63-64; Curtis \$100 Club 63-64; Candidate for Co-President 63; University of Georgia Certificate of Merit 63; Varsity Football 62-64; Quill and Scroll 62-64.



JIMMY KELL

*"Wildroot"*

Library Club 61-64.



KATHY KENDRIX

*"Kitten"*

Band 59-64, Librarian 59-60; Majorette 63-64;  
F.H.A. 62-64; F.B.L.A. 63-64; Curtis \$100  
Club 64; F.T.A. 59-60; 4-H Club 59-60.



MARY KENDRIX

*"Mary"*

8th Grade Chorus 59-60; Girls' Chorus 61-62;  
F.H.A. 63-64; F.B.L.A. 63-64.



LAMAR LATHEM

*"Gifford"*

8th Grade Football 59-60; B-Team Football  
60-61; Mixed Chorus 60-64; Varsity Football  
62-63; Varsity Baseball 62-64; Mixed En-  
semble 62-63.



EDDIE LONER

*"Eddie"*

Library Club 62-64; F.F.A. 59-64.





SUSAN MANNING

*"Susan"*

Homeroom Secretary 59-60; Music Club 59-60; Secretary 60-61; Girls' Chorus 59-63; Glee Club 62-63; 8th Grade Basketball 59-60; Varsity Basketball 60-63; Student Council 60-62; Secretary-Treasurer Freshman Class 60-61; Secretary-Treasurer Sophomore Class 61-62; Student Council Convention 61-62; Candidate for Co-President 63; Jr.-Sr. Committee Chairman 63; Dramatics Club 63-64; Quill and Scroll 62-64; Delegate to Leadership Conference 61, 63; Language Club 62-63, Secretary; Cheerleader 62; Annual Staff 62-64, Co-Assistant Editor 62-63, Co-Circulation Manager 62-63; Co-Editor 63-64; Curtis \$100 Club 63; Senior Superlative; University of Ga. Merit Award 63.

LARRY MANUS

*"Larry"*

F.F.A. 59-60; Beta Club 61-63; Language Club 60-62; Science Club 60-62; Boys' State 63; Co-President Student Council 63-64; Treasurer, Beta Club 61-62; Co-Business Manager Ad Staff 63-64; Track 62-63; State F.F.A. Chapter Meeting 59-60.



PAT MARSHALL

*"Sweetie"*

4-H Club 59-61; Aerie Staff 62-64; 8th Grade Chorus 59-60; Girls' Chorus 60-61; Mixed Chorus 61-62; Pep Squad 61-62; Dramatics Club 61-63; F.H.A. 59-64; Curtis \$30 Club 64; F.B.L.A. Secretary 63-64; Homecoming Queen Candidate 63.



JAMES MARTIN

*"James"*

Track 63; F.F.A. 61-64.



JANICE MASSEY

*"Janice"*

Transferred 62; NOMA Math Award, Perfect Score 62-63; F.B.L.A. 63-64.



PATSY MASSEY

*"Pat"*

F.H.A. Club 58-59; Girls' Chorus 60-62; Mixed Chorus 61-62.



BARBARA MATHIS

*"Barbara"*

4-H Club 59-63; F.H.A. 59-64, Treasurer 63-64; Pep Squad 60-61; Annual Staff 62-64, Ad Staff Business Manager 63-64; F.B.L.A. 63-64, Treasurer; Science Club 61-62.

ALICE MAULDIN

*"Jack"*

Music Club 59-64; 8th Grade Chorus 59-60; Girls' Chorus 59-62; Mixed Chorus 60-61; Circulation Manager School Echoes 63-64; Dramatics Club 62-64; Quill and Scroll 62-64; Basketball 59-64; Junior Civitan 62-64; Chaplain 63-64; Committee Chairman of Jr.-Sr. 63; Circulation Staff of Aerie 62-63.





JULIE McCLAIN

*"Oolie"*

Transferred 63-64; Beta Club 61-64; Honor Roll 59-64; Dramatics Club 63-64; Library Club 63-64, Reporter; Student Council 63-64, Secretary; Secretary Senior Class 63-64; Editor School Echoes 63-64; Most Outstanding Junior 62-63; U. G. Certificate of Merit 63; Senior Superlative; Library Club 63-64, Reporter.



VIVIAN McCLESKEY

*"Vivian"*

4-H Club 59-61; Library Club 61-62; Aerie Staff 62-64; F.B.L.A. 63-64; \$100 Curtis Club 63-64.



GAIL McGINNIS

*"Gail"*

8th Grade Basketball 59-60; Varsity Cheerleader 60-63; Jr. Civitan 62-64; Quill and Scroll 62-64; F.H.A. 61-63; Music Club 62-63; Girls' Chorus 61-62; Sports Staff of Aerie 62-63; Alumni Editor School Paper 63-64; Homecoming Queen 63; Small Ensemble 61-62.



SHEILA McWHORTER

*"Sheila"*

Majorette 60-63, Co-Captain 61-62, Captain 63; Band 62-64.

SANDRA NALLEY

*"Sandra"*

Pep Squad 61-62; Science Club 62-63; Leadership Convention 62; Language Club 62-64; Dramatics Club 63-64; Cheerleader 62-64; School Echoes 63-64; U.G. Certificate of Merit 63.



ELOISE PADGETT

*"Eloise"*

Pep Squad 60-61; F.B.L.A. 63-64.



DONALD PENCE

*"Donald"*

Band 59-64; Track 62-63.



RONALD PENCE

*"Ronald"*

Band 59-61.





CHARLES PETTYJOHN  
*"P. J."*  
F.F.A. 59-60; Language Club 62-63.



BARBARA PHILLIPS  
*"Barb"*  
8th Grade Basketball; F.H.A. 60-61; Dramatics Club 63-64; Music Club 63-64; Curtis \$100 Club; Cheerleading 61, Captain 62; Annual Staff 62-63; F.B.L.A. 63-64; Civitan Club 62-64, President.



GENE POTEETE  
*"Gene"*  
F.F.A. 63-64.



ELIZABETH RODGERS  
*"Liz"*  
Girls' Chorus 60-61; F.H.A. 63-64; F.B.L.A. 63-64.

JIMMY ROGERS

*"Jimmy"*

F.F.A. 59-64; Library Club 61-64.



FAY SAMPLES

*"P. T."*

Music Club 59-63; 8th Grade Chorus 59-62; Girls' Chorus 59-62; President of Quill and Scroll 61-63; Dramatics Club 61-63; Junior Civitan 61-62; Language Club 61-62; F.T.A. 60-61; Business Manager of School Echoes 63; Varsity Cheerleader 61-63; Pep Squad 59-60; Sports Staff of Annual; Honor Roll 59.



CLARA SPRUELL

*"Clara"*

8th Grade Basketball 60-61; F.H.A. 60-61; Music Club 60-64, President 63-64; Girls' Chorus 60-62; Mixed Chorus 63-64; Certificate of Merit from Univ. of Ga. 63; Language Club 63-64; Dramatics Club 63-64; Quill and Scroll 62-64; School Echoes 63-64; Aerie 62-63.

NITA SIMS

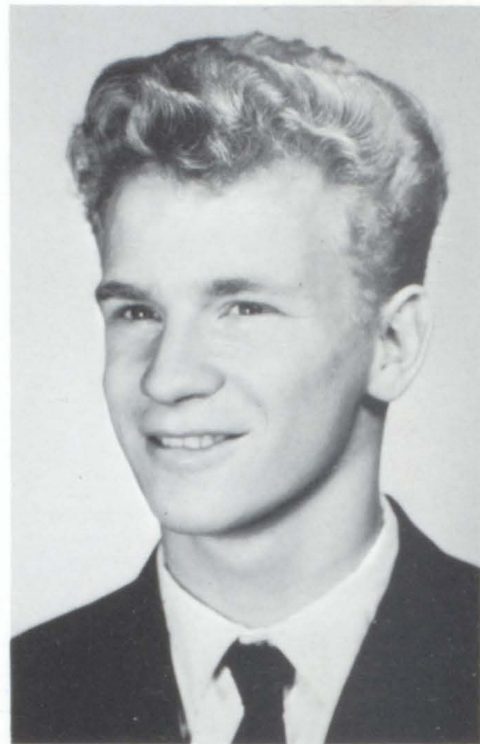
*"Gomer"*

Music Club 59-64; 8th Grade Chorus 59-60; Girls' Chorus 59-62; Sports Staff of Aerie 62-64; News Editor of School Echoes Staff 63-64; Dramatics Club 62-64; Homecoming Court 63; Quill and Scroll 62-64; Basketball 59-64; Captain 63-64; Committee Chairman of Jr.-Sr. Prom 63.





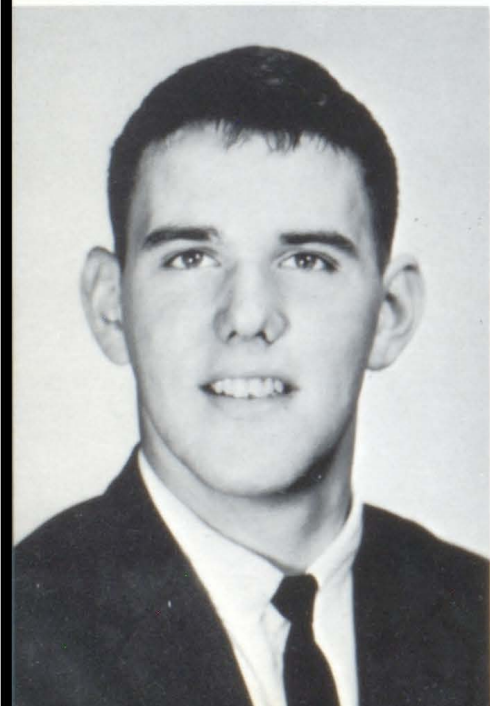
TERRY TATUM  
*"Terry"*  
Band 62-63, 63-64.



JAMES TATUM  
*"Curly"*  
F.F.A. 62-63, 63-64.



JIMMY TURNER  
*"Sleepy"*  
Transferred from Roswell 61; B-Team Football 61; B-Team Basketball 61-62; Varsity Football 62-63; Varsity Basketball 62-64; Dramatics Club 63-64; Jr. Civitan 62-64, Sergeant-at-Arms; Quill and Scroll 62-64; Circulation Staff Aerie 62-63; Echoes Staff, Art Editor 63-64; Music Club 62-63; Senior Superlative 63-64.



ERIC WALDEN  
*"Corn Pone"*  
8th Grade Football 59-60; Varsity Football 61-62; Varsity Football and Baseball 62-63; Varsity Football and Baseball 63-64.



TROY WADDELL

*"Waddle"*

8th Grade Football 59-60; Varsity Band 60-62; B-Team Football 61-62; B-Team Basketball 61-62; Language Club 62-63; Ad Staff 62-63; Track 62-64; Jr. Civitan 62-64; F.F.A. 63-64; Curtis \$30 Certificate.



GALE WALKER

*"Gay-ou"*

F.H.A. 59-63; 4-H Club 59-61; F.T.A. 61-63; 8th Grade Basketball 59-60; Pep Squad 60-61; Varsity Basketball 61-63; Jr.-Sr. Committee Chairman; Curtis \$100 Club 64; Assistant Basketball and B-Team Coach 63-64; Annual Faculty Staff 63-64; Annual Sports Staff 63-64; Civitan Club 62-63; Dramatics Club 62-64; Bowling League 61-62; Senior Superlative.



PAT WALKER

*"Heidi"*

Music Club 59-63; 8th Grade Chorus 59-60; Girls' Chorus 59-63; Mixed Chorus 62-63; Small Ensemble 60-63; Honor Roll 59-63; Beta Club 62-63; Student Council 62-63; Vice-President of Junior Class 62-63; Candidate for Co-President 63; Senior Superlative 63-64; Feature Editor of Aerie 63-64; Feature Editor of School Echoes 63-64; Dramatics Club 62-64; Language Club 61-63; Homecoming Court 64; Quill and Scroll 64.



SUE WHITT

*"Sue"*

Pep Squad 61-62; Circulation Staff 62-63; F.B.L.A. 63-64; Red Cross 63-64; Faculty Staff 63-64.





ROBERT WILLIAMS

*"Stud"*

F.F.A. 62-63, 63-64; 4-H Club 60-63; Football 61-63.



DAVID WILSON

*"Little Skipper"*

Band 59-60; 4-H Club 59-60; Mixed Chorus 60-64; Jr. Red Cross Representative 61-62; Boys' Small Ensemble 61-62; Music Club 61-62; Jr. Civitan 61-64; Aerie Circulation Staff 62-63; Language Club 62-63; Curtis \$100 Club 63-64; \$30 Certificate.



*Look at our rings?*



*Some Senior is late to class!*



*I could have danced all night! Ha!*



*Why does the president get his ring first?*



*Watch out here they come!*



*Wee doggies were going home!*



*We're really modest.*



*She ain't no prouder than we are!*



The Senior Superlatives were chosen as the most outstanding students in the Senior Class by their fellow classmates. They were elected on the basis of their academic achievements, leadership, and any outstanding achievements in any phase of the school activities.



# F E A T U R E S

*EDITOR:*

PAT WALKER



SHARON CHRISTOPHER and ROGER CASTLEBERRY



MAHALA CRISLER and DAVID JONES



*JEAN DAY and DON HALVERSON*







*DONNA ELLIS and JIMMY HAMRICK*



BRENDA HANSARD and JIMMY TURNER





SANDRA HENDERSON and ERIC WALDEN



SUSAN MANNING and DANNY ELLIS





*JULIE McCLAIN and LARRY MANUS*



GALE WALKER and JEROL GARRISON





PAT WALKER and LARRY BENNETT



*1st period begins and all is getting under way —*



*But by 2nd period explosions begin —*



*Lunch settles all for a while —*

*Everyone just pretends to be studying in the 6th period —*

*In 5th we let off steam —*







*During 3rd the teachers get grouchy and hungry –*



*In 4th we try hard to concentrate –*

*THEN.....It's ALL OVER!!!!!!!*



# C L A S S E S

EDITOR:

DONNA ELLIS



President.....Jane Phillips  
Vice-President.....Sadie Phillips  
Secretary-Treasurer.....Reggie Cox

# JUNIORS



Janice Allen



Tony Allen



David Alley



Gary Andrews



Kenneth Anderson



Robert Andrews



Betty Anglin



J. L. Anglin



Patricia Avery



Sue Bales



Alta Barron



Dale Bryant



Jerry Byrd



Terry Byrd



Gary Cagle



Gary Castleberry



Lillian Clayton



Nancy Cook



Sharon Cook



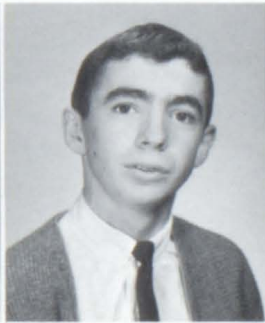
Reggie Cox



Tony Cox



Patricia Dinsmore



Tony Dinsmore



Johnny Dobson



Roy Douglas



Butch Duncan



Carol Fields



Earl Flynn



Diane Forrester



Richard Fowler



Gail Frasier



Gary Garmon



Janice Garmon



Linda Garmon



Jean Garrison



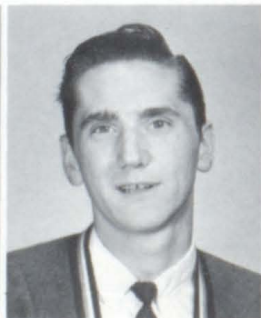
Kay Gipson



Jerry Graham



Allen Greene



Larry Gunter



Shirley Gunter



Mary Jo Haley



Wilene Hamrick



Drema Haney



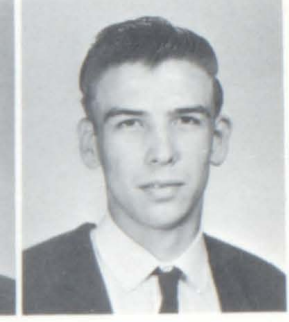
Kerry Hansard



Melba Henderson



Phil Herring



Charles Holbrook



Anita Holcombe



Sarah Holcombe



Douglas Hulsey



Phil Johnson



Diane Jones



Jean Kimbrell



Doris Kirby



Michael Lively



Georgia Mann



Jenny Martin



Rayburn Martin



Sammy Martin



Maurice Mullinax



Carol McGinnis



Donald Oliver



Billy Perrin



Jane Phillips



Sadie Phillips



Tommy Phillips



Janet Pinyan



Elizabeth Plumley



Faye Pruitt



Edith Quay



Bill Rainwater



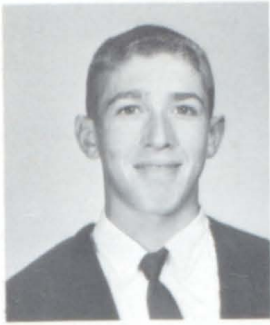
Brenda Ray



Donald Ray



David Rayner

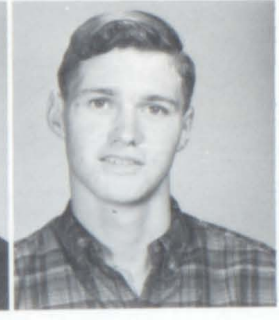


Michael Ridings

Martha Dean Roland

Shelia Rucker

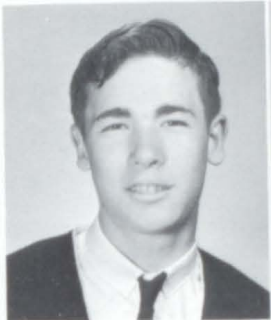
Hugh Scoggins



Marie Sharpton

Allen Ray Smith

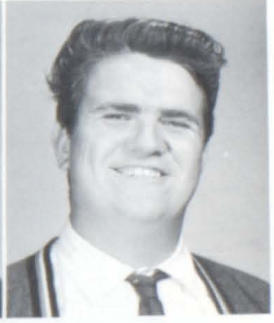
J.C. Smith



Ronny Smith

Dan Spruell

David Standridge



Dexter Strickland

Joe Tarpley

Larry Tatum



Ann Wallis

Hilda Webb

Billy Westbrook

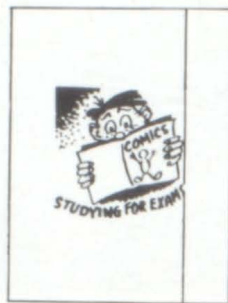
Douglas Williams



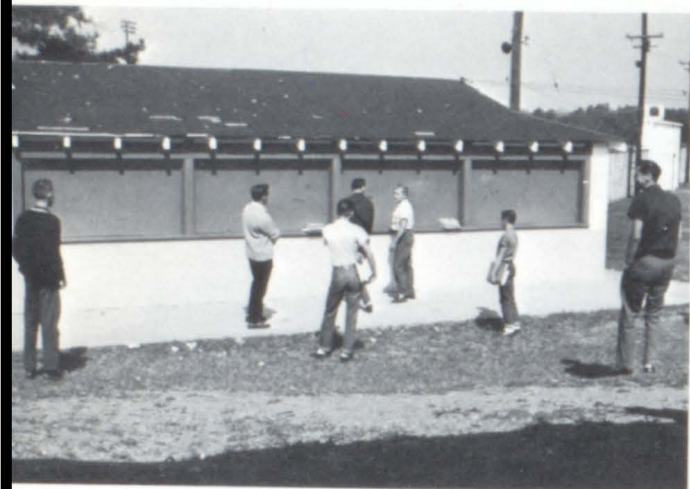
Randall Williams



Nancy Wood



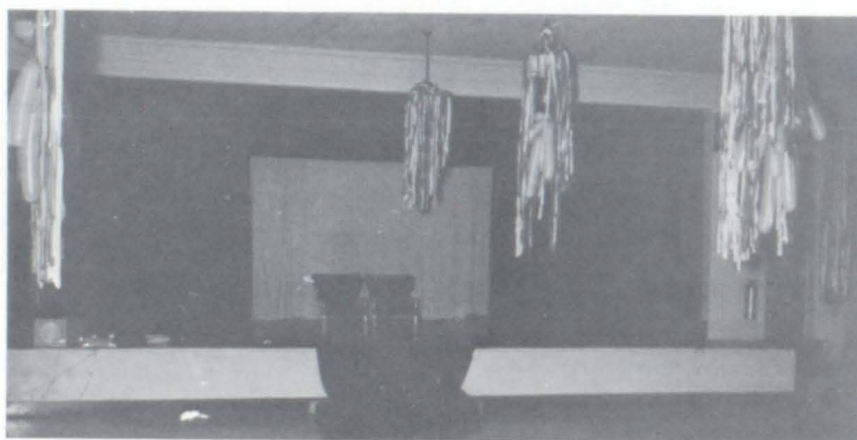
Jerry Wright



*Time out for a fight -*



*Hell-----o, Baby!*



*This was suppose to be a swinging dance?*



*Mr. Tree, will we ever become SENIORS????*





President.....Janice Thompson  
 Vice-President.....Donna Nalley  
 Secretary-Treasurer.....Phil Worley

# SOPHOMORES



Sammy Allen  
 Stevie Allen  
 Teresa Allen



Ken Angel  
 Larry Arons  
 Phyllis Askea



Bill Akins  
 Linda Albertson  
 Shirley Albertson



Gloria Anderson  
 Harriett Anderson  
 Tommie Anderson



Ken Barfield  
 Peggy Barnes  
 Melvin Blackwell



Sue Blalock  
Jane Brock  
Patsy Brannon  
Derrell Brooks



Stephen Brumblelow  
Parker Burgess  
Rachel Burnett  
Saralene Cagle

David Carroll  
Dianne Cash  
Patsy Cash  
Judy Chadwick



Brenda Coffey  
Mark Coleman  
Jimmy Collins  
Sammy Compton



Jerry Cook  
Maggie Cook  
Revonda Collett  
Elaine Cowart



Sammy Cowart  
Ronnie Cox  
Randy Crenshaw  
Mike Crisler



Rick Dangar  
Howard Daws  
Patricia Daws  
Yvonne Echols



Steve Elliott  
Sandra English  
Sheila Estes  
Wayne Estes

Sharon Etris  
Claud Eubanks  
Steve Fell  
Jimmie Fine



Larry Garmon  
Douglas Garrett  
Patricia Garrison  
Billy Green



Denise Green  
Jimmy Green  
Douglas Greene  
Patsy Greene



Melvin Grimes  
Linda Hamrick  
Sandra Hamrick  
Bonnye Hansard



Tommy Henderson  
 Bobby Herrin  
 Barbara Hogwood  
 Linda Holcombe



Martha Ann Holbrook  
 Roger Holcombe  
 James Houze  
 Harriet Hughes

Ronnie Jackson  
 Grace Johnson  
 Doyle Jones  
 Bobby Kirby



James Lathem  
 Morris Loner  
 Kaye Mansell  
 Brenda Manus



Thomas Martin  
 Dianne Massey  
 Janie Massey  
 Bill McCallum



Glenda Medlin  
 Judy Merritt  
 David Moore  
 Ernie Moore



Jayne Moss  
 Jean Moss  
 Phil Moss  
 Donna Nalley



Mary Newton  
 Roy Newberry  
 Melba Norwood  
 Charlotte Ockoman

Bobby Page  
 Dianne Phillips  
 David Phillips  
 Melba Reese



Larry Richards  
 Sue Rogers  
 Betty Ann Rogers  
 Ronnie Rogers



Roy Rogers  
 Elizabeth Roland  
 Joan Rucker  
 Ronald Sanders



Brad Sanderson  
 Maude Sargent  
 Donna Smith  
 Janice Smith





Jean Singleton  
 Jane Spence  
 Judy Stephens  
 Gail Sutton  
 Diane Thompson  
 Janice Thompson  
 Dale Tucker  
 Sheryl Turner  
 Elaine Upshaw

Johnny Upshaw  
 Rosemary Van Wagner  
 Betty Vaughan  
 Lewis Webb



Gloria West  
 Terry West  
 Edward Wilkins  
 Larry Williams



Luella Williams  
 Linda Winters  
 Barbara Womack  
 Bruce Wood

Paul Wood  
 Libby Woods  
 Phil Worley  
 Joan Wright



*Someone had better watch his step!*



*Our dreams for the future – cloudy!*



*Those good 'ole football games!*



*Who's hiding behind that green door?*



President.....Gary Reece  
 Vice-President.....Jerry Rogers  
 Secretary-Treasurer..... Nancy Haney

# FRESHMEN



Linda Arons  
 Jeannie Allen  
 Beverly Andrews

Brenda Anglin  
 Linda Anglin  
 Tommy Armstrong  
 Dale Austin

Douglas Bales  
 Gail Barron  
 Bill Bates  
 Ruth Barrett

Michael Bell  
 Harold Bennett  
 Gary Bennett  
 Becky Benson

Dianne Benson  
 Tony Boling  
 Dorothy Brannon  
 Dianne Brooks

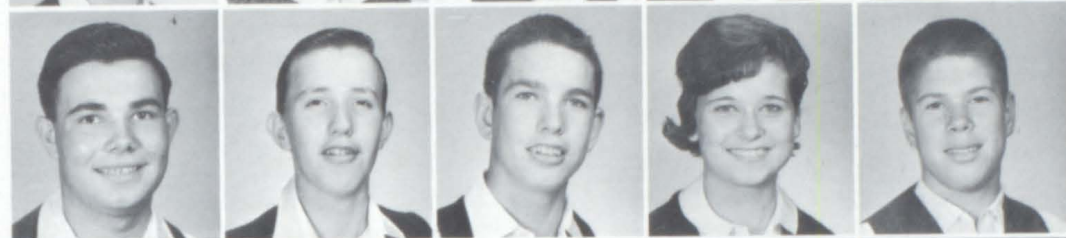




Robert Brumbelow  
Jerry Burnett  
Harold Chester  
David Collett  
Elemer Cowart



Myra Bryant  
Gloria Carlan  
Charles Christopher  
Susan Combs  
Martha Cronion



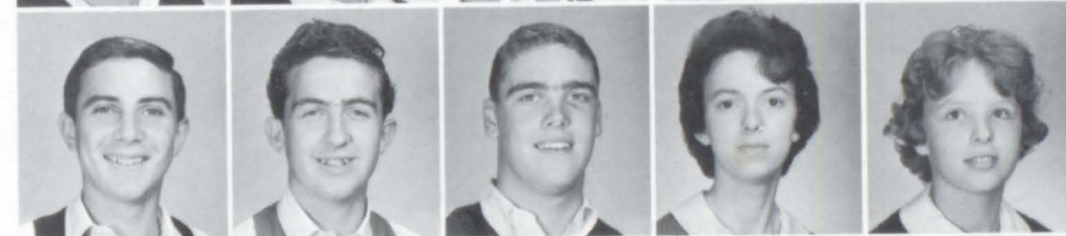
Harold Buice  
Doyle Cates  
Bill Coleman  
Joan Compton  
Eddie Dance



Jane Burgess  
Earlene Cato  
Nancy Colman  
Kenneth Cook  
Carolene Danger



Brenda David  
Mary Nelle Dinsmore  
Billy Durham  
Kenny Fields  
Peggy Foster



Benny Darrocott  
Ricky Dinsmore  
Larry Ellis  
Rebecca Fine  
Maynita Fouts



Albert Day  
Carolyn Dockery  
Jo Ezzard  
Diane Fleck  
Nancy Fouts



Jimmy Francis  
Dow Garrett  
Wilma Garrison  
Danny Gates  
Stephen Gayton



Patricia Gilbert  
Sherry Hagoed  
Mildred Hansard  
Denny Holbrook  
Jack Houze



Shirley Green  
Mary Beth Halverson  
Sue Hawkins  
Bobby Holcombe  
Nolan Ingram



Babbie Greene  
Joyce Hamrick  
Alfred Heard  
Martha Ann Holmes  
Linda Jackson



Rex Grizzle  
Nancy Haney  
Linda Henderson  
Mary Sue Holtzclaw  
Annelle Johnson



Brenda Jones  
Wayne Jones  
Patsy Lively  
Bobby Macris  
Velma Marshall



Linda Jones  
Karon Kimbrell  
Terry Lively  
Mark Mann  
Ellis Martin



Sandra Jones  
Brenda Langley  
Ronnie Loner  
Bland Marshall  
Pam Martin



Patsy Martin  
Roger Martin  
Sylvia Martin  
Judy Massey  
Susie Mauldin



Ronald Moore  
 Danny Morris  
 Rex Morris  
 Danny Moulder  
 Gary Mulkey



Wendell McCleskey  
 Larry Newberry  
 Delorise Patton  
 Patsy Pearson  
 Beverly Potete



Connie McMullan  
 Larry Newton  
 Evelyn Payne  
 Donzel Pendley  
 Johnny Powell



Ray Nalley  
 Jane Nix  
 Mark Payne  
 Jimmy Phillips  
 Dianne Pruitt



Glen Pruitt  
 Beverly Richards  
 Bill Rogers  
 Joan B. Rucker  
 Elaine Smith



Mary Helen Rayner  
 Freddie Richards  
 Brenda Rogers  
 Clay Samples  
 Annette Sosbee



Gary Reece  
 Jerry Richards  
 Jerry Rogers  
 Linda Scott  
 Leslie Spruell



Annette Stapler  
 Jack Stapler  
 Kathy Stewart  
 Kayron Sutton  
 Robert Swain  
 Dewey Tatum



Kenneth Timms  
 Peggy Treadway  
 Frankie Turner  
 Kathy Walker



Marcus Wallace  
 Sammy Whitmire  
 Barbara Wilkins  
 Sharon Wilkie



Charles Williams  
 David Winters  
 Lonnie Winters  
 Bobby Wood



Norris Wood  
 Kathy Worley  
 James Wright  
 Clay Young



*Mommy said there'd be days like this!!!!*



*Let's make this a ladies' choice....*



*How much do the ice cream and cokes sell for?*



*There she is, Miss America!*



*Laugh - go ahead - see if you have any friends when you grow up!!!!*



President.....Connie Dalton  
 Vice-President.....Evelyn Hansard  
 Secretary-Treasurer.....Wanda Perry



Kimsey  
Abbott

Ann  
Alberson



Johnny  
Allen

Geraldine  
Anglin

# SUB-FRESHMEN



Ronald  
Anglin

Barbara Ann  
Appling

Stevie  
Askea

Ronnie  
Baker



Kathy  
Bailey



Marcus  
Bales

Jeannette  
Bames



Katherine  
Barrett



Dennis  
Barron

Lavon  
Bates

Shirley  
Bates

Jan  
Bell

Michael  
Bell

Hilda  
Bennett

Herbet  
Bishop

James  
Blackwell

Picture not available



Wanda  
Blackwell



Cathy  
Blalock

Lannie  
Bales

Linda  
Boling



John  
Bougher



Brenda  
Brannon

Henry  
Brooks

Johnny  
Brown



Carolyn Brumbelow   Robert Brumbelow   Robert Brumbelow   Connie Bryant   Leory Bryant   Mark Buice   Hilda Burgess   Bobby Burks



Jimmy Burks   Sammy Burks   Hubert Burnett   Cathy Byrd   Diane Cagle   Gail Cagle   Janice Cagle   Trenton Campbell



Gail Carlan   Connie Castleberry   Johnny Castleberry   Kenneth Chambers   Rodney Chatham   Patricia Chester   Mary Christopher   Penny Coleman



Rex Collett   Sue Crenshaw   Jimmy Crisler   Elaine Dance   Timmy Danger   Connie Dalton   Rebecca Darrocott   Michael David



Ted Dempsey   Charles Dinsmore   Roy Dockery   Connie Dorris   Jennifer Elliott   Michael Elliott   Richard Elliott   Ann English



Brenda English   Tommy Estes   Toney Eubanks   Billy Fergerson   Reba Ferrell   Henry Flint   Ronnie Foster   Jackie Fouts

BALL GAME TODAY  
 Photograph not available



Jill Fuller    Martha Garman    Barbara Ann Garrison    Charles Garrison    Sally Gilstrap    Debbie Gleeson    Clarence Gravitt    Bobby Green



Mary Green    Johnny Green    Phil Green    Mark Greene    Albert Groover    Jimmy Gunter    Brenda Hamrick    Peggy Hamrick



Evelyn Hansard    James Hansard    Ralph Hansard    Leroy Harbin    Donnie Henderson    Jimmy Henderson    Randy Henderson    Nelda Hesketh



Martha Hester    Wayne Hester    Jerry Hogwood    Faye Holbrook    Teresa Holbrook    Barbara Holcomb    David Holcombe    Sue Holcombe



Calvin Holden    Albert Holder    Ronnie Hollifield    James Hovea    William Hudson    Sandy Huggins    Jerome Hunter    Brenda Hyde



Delores Ingram    Burma Jackson    Johnny Jackson    Pam Jarvis    Mary Lynn Jones    Orbie Joyner    Viola Karr    Michael Kelly





Larry Kimbrell      Danny Kenney      Henry Lackey      Bobby Joe Lane      Robert Long      Ellen Macris      Lester Manders      Zelma Marshall



Bobby Joe Martin      Brenda Martin      Hulon Martin      Shellene Martin      Reid Massey      Alvin Matthews      Stephen Monroe      Elizabeth Moore



Elaine Morgan      Calvin Moss      Barbara Mullinax      Phil Mullinax      Ronald Mullinax      Nicky McDougle      Ricky McFarlin      Rolly McFarlin



R. D. McKinzie      Linda McRee      David Norris      Danny Norton      Sue Nunn      David Oliver      Sandra Page      Joyce Payne



Joanne Peavy      Joseph Pendley      Wanda Perry      Bobby Phillips      Doris Phillips      Dianne Pirkle      Walter Pitts      Christine Plumley



Bonnie Pressley      James Price      Donald Pruitt      Donald Rudasill      Phil Rainwater      Lamar Rankin      Mary Louise Rankin      Gaile Reece



Rodney Reese      Billy Reeve      Bobby Richards      David Richards      Dianne Richards      Edward Richards      Mary Ann Richards      Linda Reese



Kenneth Rogers      Ricky Rogers      Phil Rucker      Don Rudasill      Donny Samples      Fred Sanderson      Linda Satterfield      Ray Scatt



Genny Sharptm      Cliff Shearin      Carolyn Shirley      Robert Shirley      J. L. Smith      Eric Stamey      Betty Standridge      Douglas Standridge



Mildred Stephens      Deryl Stewart      David Strickland      Shelby Strickland      Ronnie Sutton      Kathy Tatum      Terry Temples      Harry Thompson



Johnny Thompson      Larry Tharnton      Karen Timms      Lynn Timms      Bobby Turner      Charles Turner      Ronnie Turner      Elizabeth Vaughan



Gail Vaughan      Harry Vaughan      Marion Vaughan      Paul Vaughan      Barbara Waits      Baft Walden      Sharron Walker      Phil Warner



Jimmy Waters

Louise Waters

Jerry Weathers

Paul Webb

Ricky Webb



Karen Williams

Carol Wood

Elaine Wood

Gene Wood

Judy Wood



Melvin Wood

Steve Woodliff

Jerry Woods

Bill Worley

Johnny Worley

*Will the real CO-EDITOR please stand up ????????*



*They call me Gorgeous Gus-----*



Miss Ann

Just after school started in September Miss  
After a short leave from school she returned just  
She spent her last day with her students working  
The next morning Milton High students received

Though she is no longer with us, her memory  
the years. "They are not dead whose memory

# ADMINISTRATION AND FACULTY



Lastinger



Ann Lastinger suffered a heart attack, before Christmas to her music room, on her cherished Christmas Program, the shocking news of her passing away.

lives and shall continue to live through lives. They all must live on.”



John W. Grindle  
*Principal*



Gwen Shufelt  
*County Mathematics Co-ordinator*



Frances Herrin  
*Clerk*



Ruth Higgins  
*Assistant Principal*

Ralph Wilson  
*Clerk*





Lucien Batson  
*Languages*



Shelyv Bowes  
*Health-Mathematics*



Norman Broadwell  
*Social Science*



Ruel Burgess  
*Mathematics*

Willie Chapman  
*English-Mathematics*

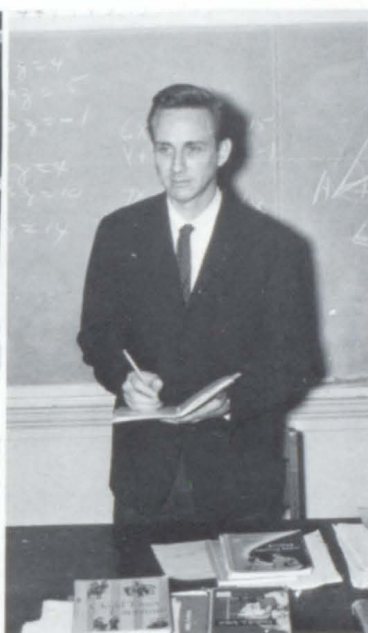
G. O. Craddock  
*English*

Ruby Crawford  
*English*

Marianne DeLoache  
*Business Education*



Mary Elkins  
*Word Study*  
*Family Relations*



Elizabeth Elliott  
*English*



John Eskew  
*Physical Education*



Novis Fields  
*Biology-Chemistry*





Pat Gordon  
*Mathematics*

Milton Hambalek  
*Social Science*

Fannie Harman  
*English*

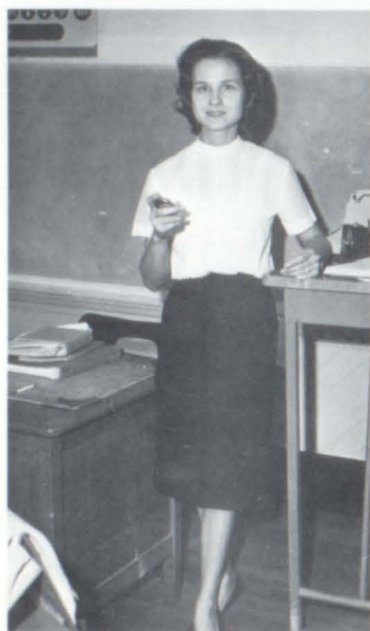
Clayton Hawkins  
*General Science*  
*Drivers' Training*

Mary Hawkins  
*Business Education*

Mary Jane Hearn  
*Physical Education*

Harold Hughes  
*Shop*

Gus Letchas  
*Health*  
*Physical Education*



John Massey  
*Journalism-English*

James Mayer  
*Business Education*

Bettie McLemore  
*Art*

Iris Reese  
*Home Economics*







Brad Sanderson  
*Biology-Physics*



David Scese  
*Band*



Jo Smith  
*Home Economics*



James T. Smith  
*Agriculture*

J. B. Tate  
*Social Science*

Gail Thompson  
*English*

Johnny Tolbert  
*Special Education*

Ben Trimble  
*Business Education*



Louis Wuichet  
*Social Science*



Virginia Woods  
*Librarian*



*Cafeteria Staff*



*Not Pictured:*

Peggy Rainwater  
*Music*

Barbara Dodd  
*Library Clerk*

*Cleaning Staff*



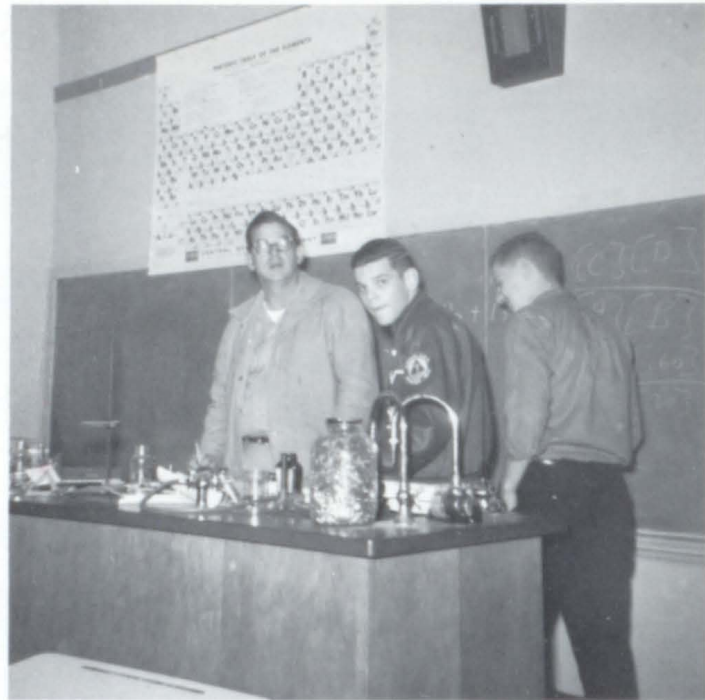
*Which did you say was Miss America??*



*What a*

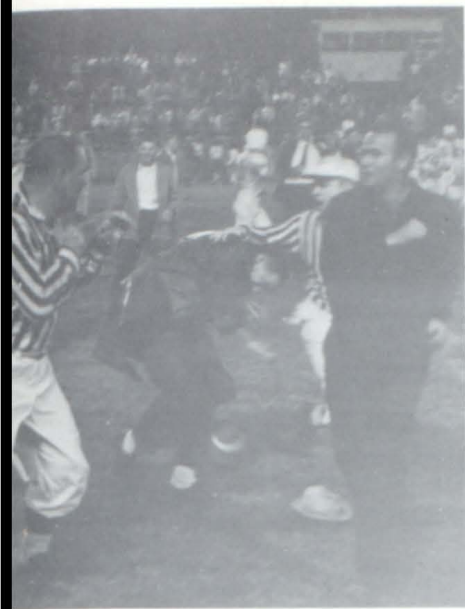


*It just can't be  
John Wilkes Booth!*



*Watch out, they'll blow up the chemistry lab!*





*ballgame??????????*



*Our future sales men and women?*



*Boy what a day!*

C

L

U

B

S

EDITOR:

MAHALA CRISLER



SECTION EDITORS - 1964 AERIE



Sponsors -  
Miss Gail Thompson  
Mr. Clayton Hawkins

Co-Editors -  
Susan Manning  
Sandra Henderson





*Assistant Co-Editors -*  
Tommy Phillips  
Jane Phillips

*Classes Editor -*  
Donna Ellis



*Photographers -*  
Phil Herring  
Reggie Cox

*Business Managers -*  
Barbara Mathis  
Larry Manus





*Club Editor – Mahala Crisler*



*Features Editor – Pat Walker*



*CIRCULATION STAFF*



*Activities – Jean Day, Editor*



*Faculty Staff – Peggy Hamrick, Janice Barfield*

# SCHOOL

# ECHOES

The *School Echoes* appears on the campus twelve times a year. *Sponsor:* Mr. Massey



ECHOES STAFF







*Quill and Scroll*  
International Honorary Society for High School Journalists

**QUILL AND SCROLL**

*Sponsor: Mr. Massey*



**DRAMATICS CLUB**

*Advisor: Mr. Massey*



## BETA CLUB

The Beta Club is a service organization composed of upper classmen who maintain a required academic average and possess outstanding leadership ability.

The Beta's main project this year was the bookstore, and activities include the Beta Club Convention and picnic.





## JUNIOR BETA CLUB

The Junior Beta Club was formed for the eighth and ninth grade students who have met certain academic requirements in their subjects.



## F.T.A.

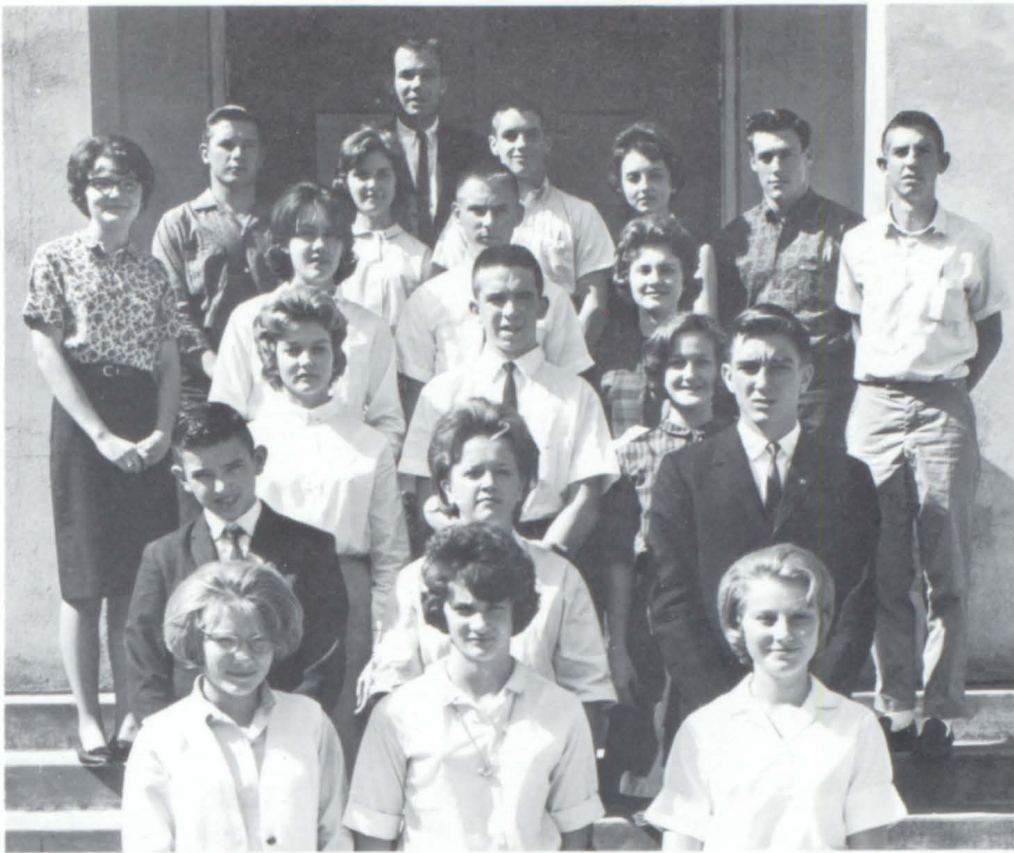
*Sponsor: Mrs. Bowes*



## F.B.L.A.

*Sponsor: Mr. Mayer*





The Student Council is the most important organization at Milton.

## STUDENT COUNCIL

*Advisor:* Mr. Tate

*Co-Presidents:* Sharon Christopher — Larry Manus



The members of the Junior Red Cross donate their time for the benefit of others.



## JUNIOR RED CROSS



## LANGUAGE CLUB

The Language Club is an honor society for students with an A or B average in language. The students also must have a special interest in languages.

*Sponsor:* Mr. Batson



**LIBRARY CLUB**



**JUNIOR CIVITAN CLUB**



**GIRLS' 4-H CLUB**

**BOYS' 4-H CLUB**



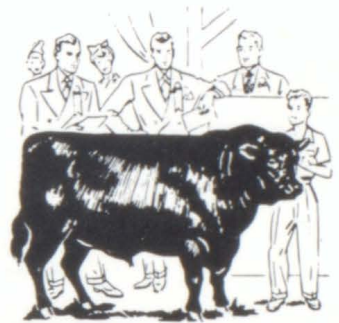




## FUTURE HOMEMAKERS OF AMERICA



## FUTURE FARMERS OF AMERICA





**GIRLS' CHORUS**

# CHORAL

**BEGINNING GIRLS' CHORUS**



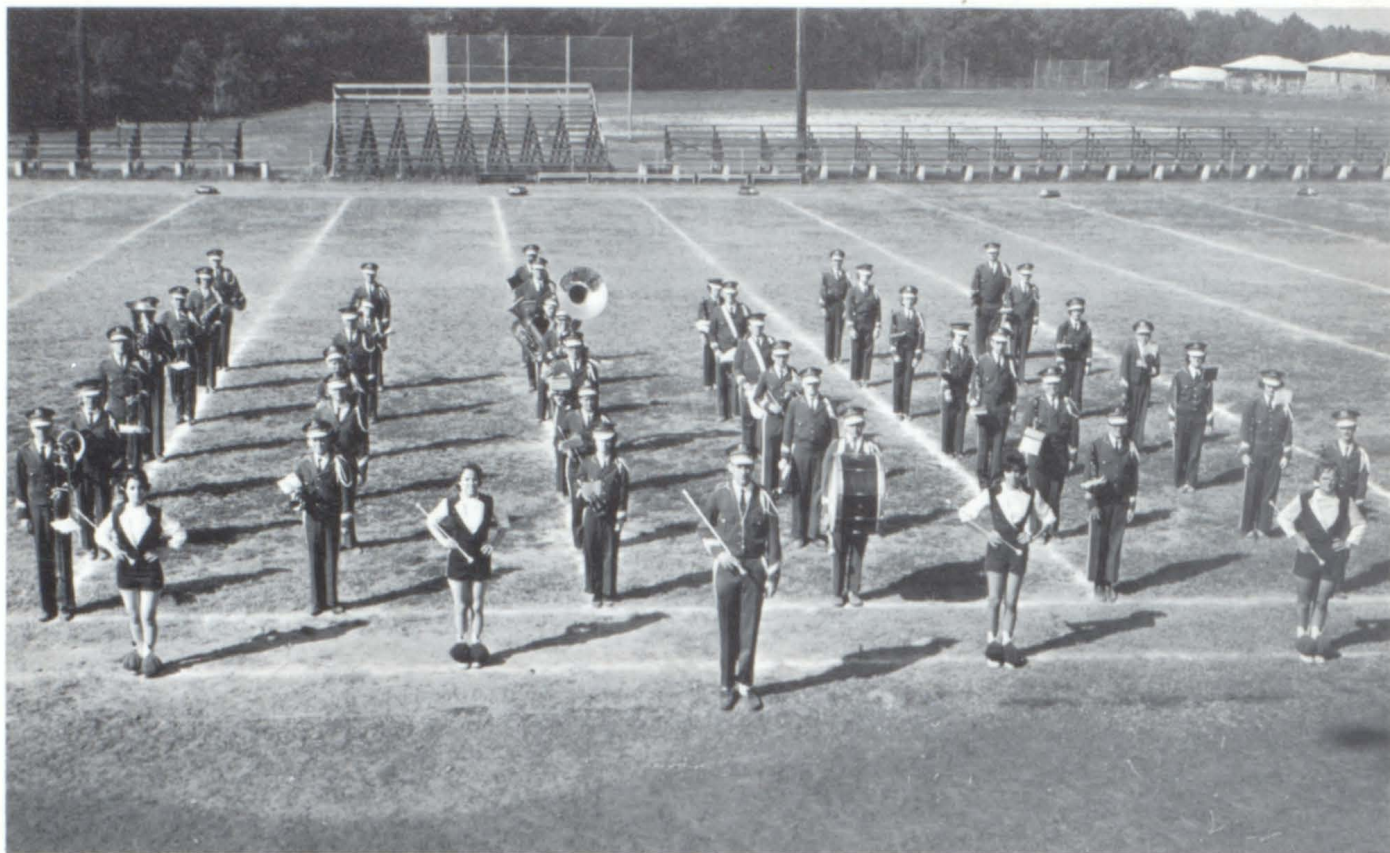


**MIXED CHORUS**

# **G R O U P S**

**SMALL ENSEMBLE**





## BAND

*Director.....Mr. Scese*

The Band performs concerts at Thanksgiving, Christmas, and in the spring. It also plays the Grand March at Commencement.



— DRUM MAJORS —  
Allen Greene, Gary Garmon, Reggie Cox

# MAJORETTES



Donna Chester  
*Captain*



Mahala Crisler  
*Co-Captain*



Kathy Kendrix



Patricia Grant



*\$100. CLUB*



*BOWLING TEAM  
1st Place - Trophy  
Captain - Betty Vaughan*

*BOWLING TEAM*



*BOWLING TEAM  
Captain - Jerry Graham*





*BOWLING TEAM*  
*1st Place - Trophy*  
*Captain - David Rayner*



*Jr.-Sr. Co-Chairmen*  
*Patricia Dinsmore*  
*Jerry Graham*



*BOWLING TEAM*  
*Captain - Kenneth Angel*

*STAR STUDENT AND TEACHER*  
*Larry Bennett*  
*Mr. J. B. Tate*

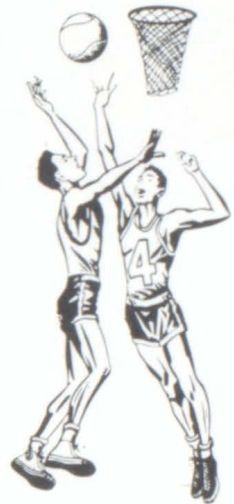








# SPORTS



EDITOR:

GALE WALKER

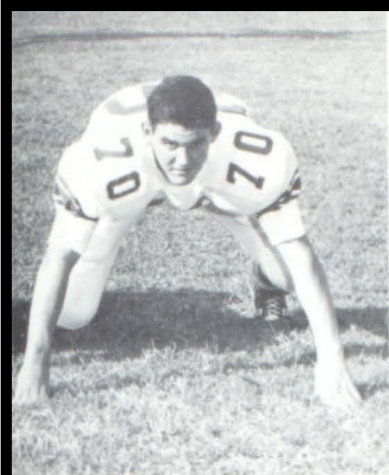


V  
A  
R  
S  
I  
T  
Y



F  
O  
O  
T  
B  
A  
L  
L

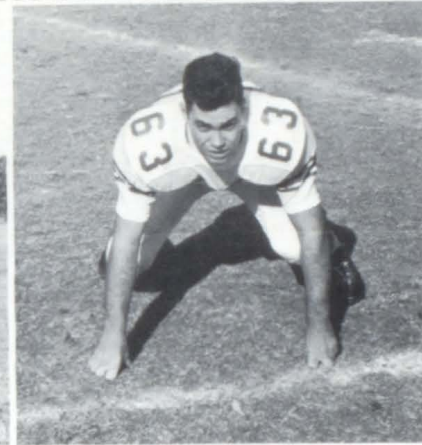
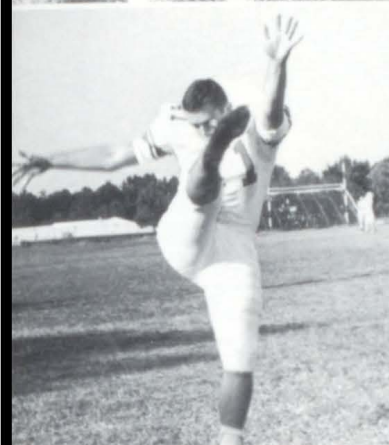
*Captain — Jimmy Hamrick*



Eric Walden  
Jimmy Turner  
Barry Coleman



Don Halverson  
Jerry Wright  
David Jones



Danny Ellis  
Deryl Ingram  
Jerol Garrison

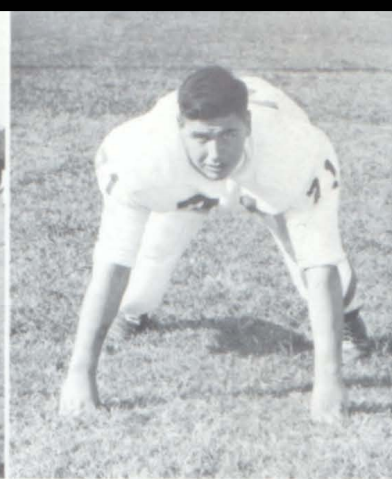


James Lathem  
Roger Castleberry

**M  
A  
N  
A  
G  
E  
R  
S**

These are our nine senior men, with their dependable managers.

Tommy Phillips  
David Alley  
James Timms

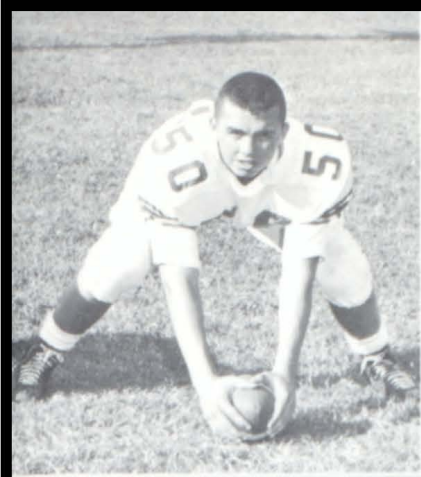


Sammy Martin  
Ronnie Jackson  
Clay Samples

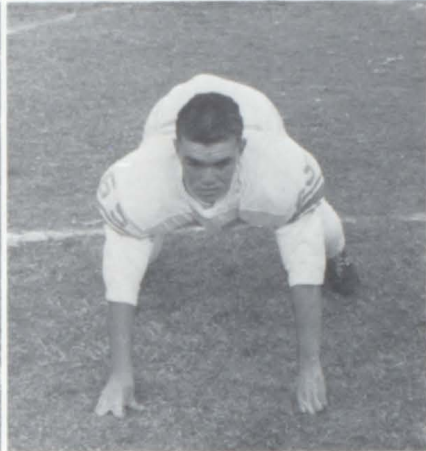
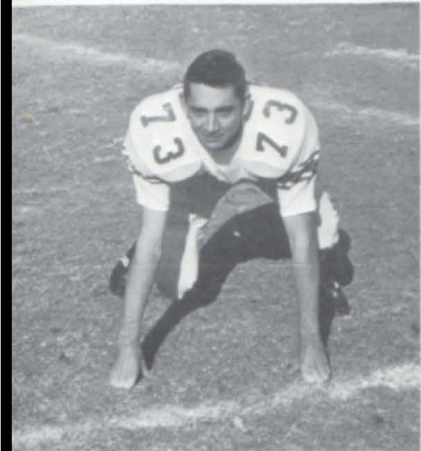


Bobby Holcombe  
Brad Sanderson  
David Rayner

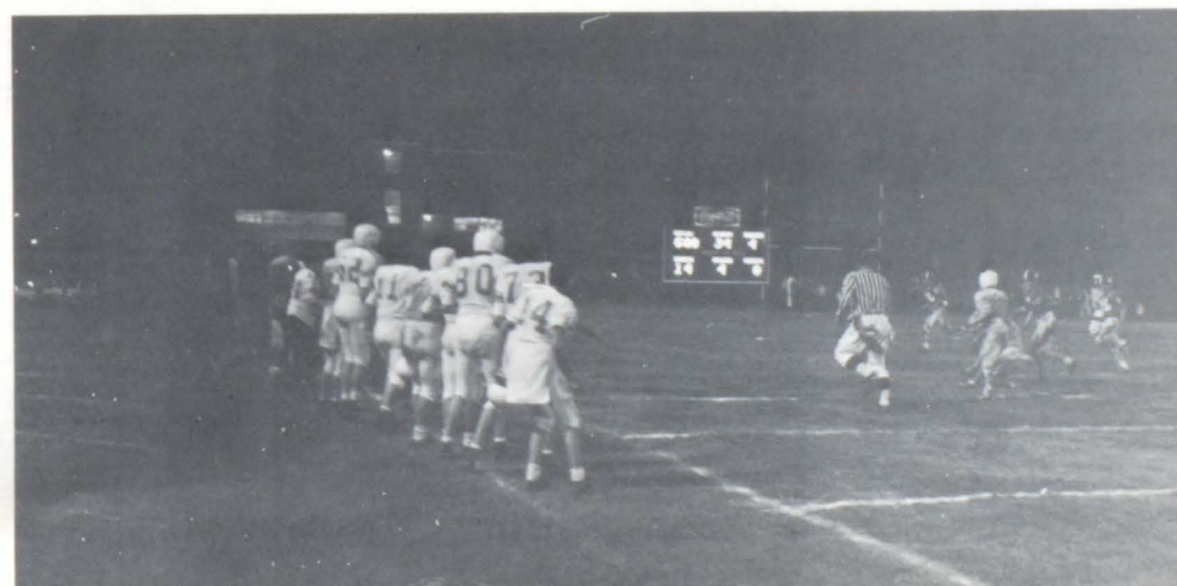




Tommy Henderson  
Randall Williams  
Larry Ellis



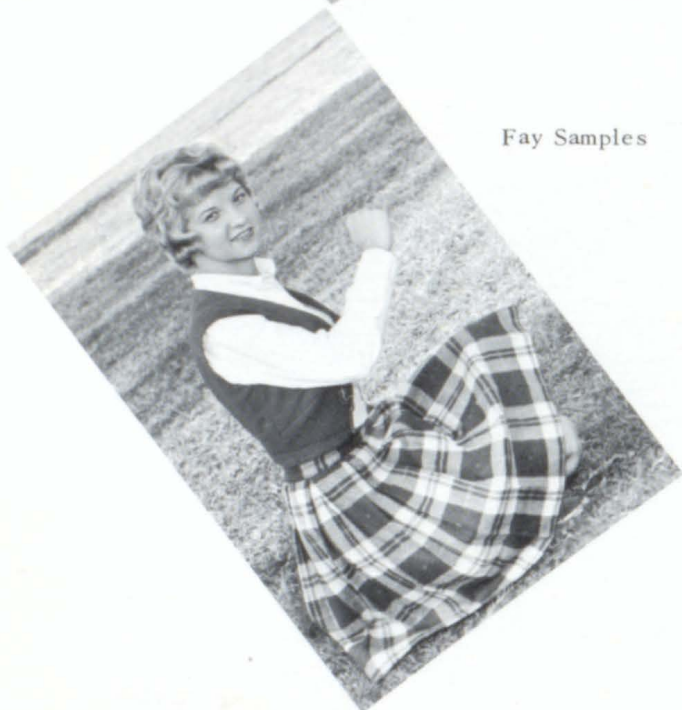
Rayburn Martin  
Johnny Powell



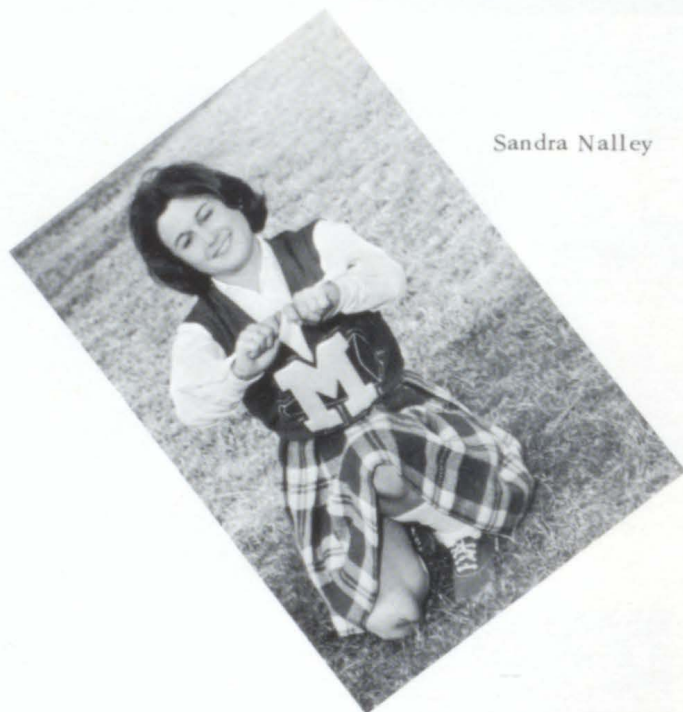


Jean Bishop  
*Captain*

The seniors, Jean, Fay, Sandra, Carolyn and Janice will truly miss the position they held as cheerleaders but will be missed more by Milton!



Fay Samples



Sandra Nalley



Shelia Rucker

All this business of jumping around seemed strange to little Toni, the mascot, but she enjoyed it anyway.

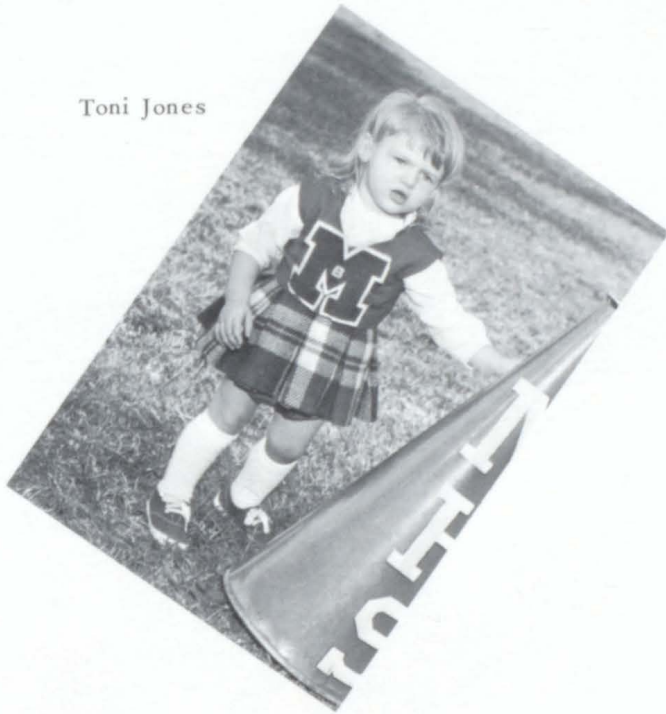
Carolyn Jones  
*Co-Captain*



Janice Barfield



Toni Jones



Melba Henderson





## 1963-64 CHEERLEADERS

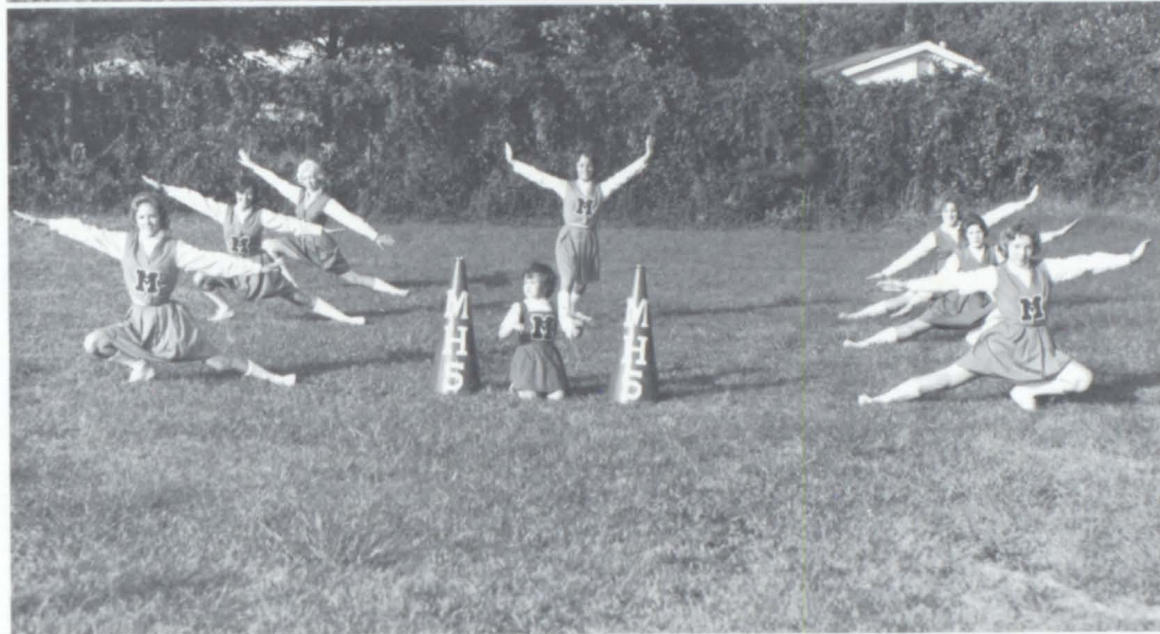






"B"  
TEAM

F  
O  
O  
T  
B  
A  
L  
L



"B"  
TEAM

C  
H  
E  
E  
R  
L  
E  
A  
D  
E  
R  
S



8th  
GRADE

F  
O  
O  
T  
B  
A  
L  
L



Anita Sims

Jean Day



C  
A  
P  
T  
A  
I  
N  
S



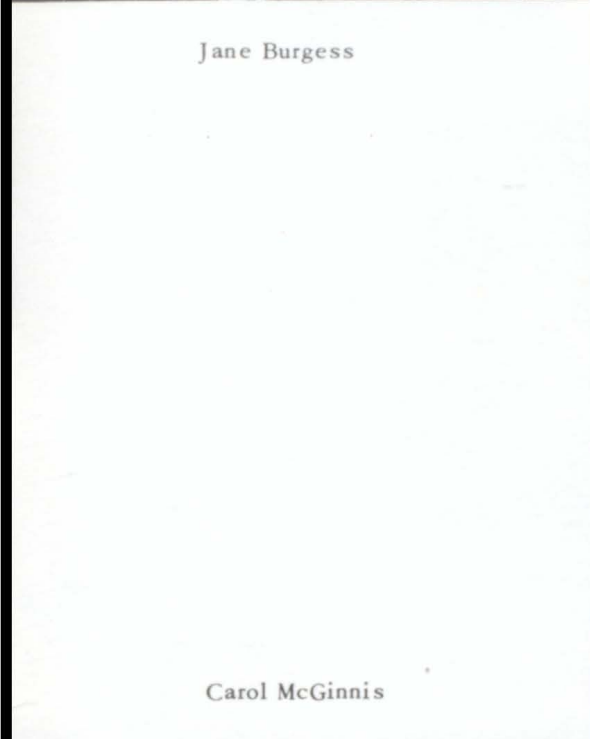
Jane Burgess



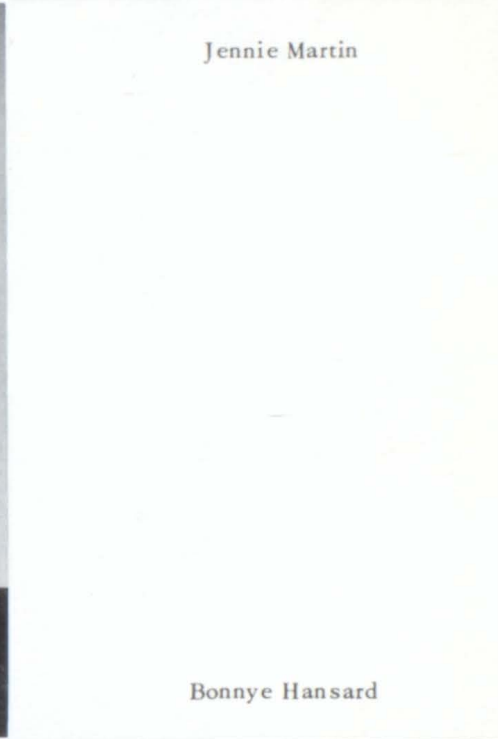
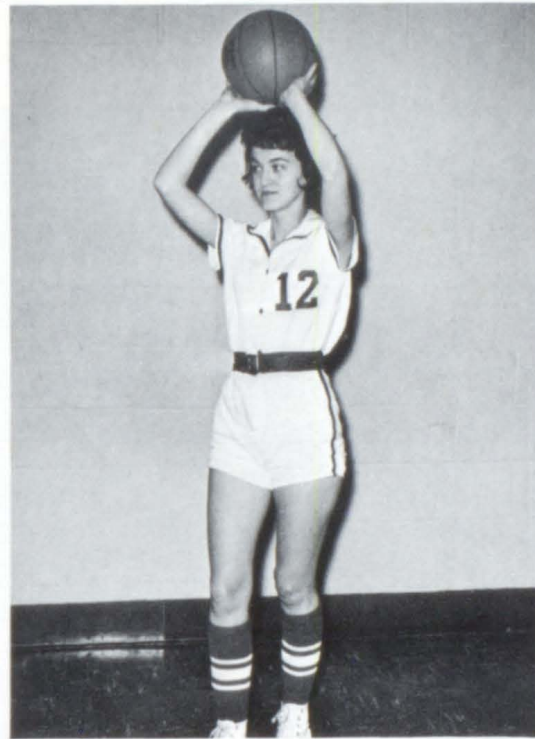
Alice Mauldin



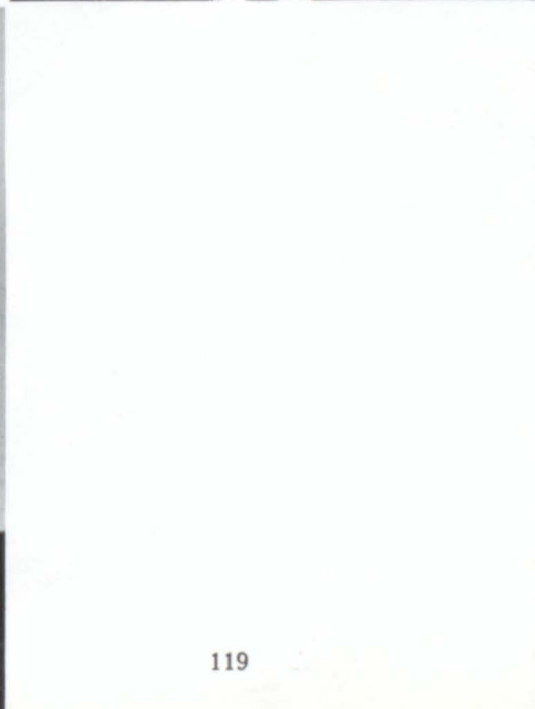
Jennie Martin



Carol McGinnis



Bonnye Hansard





Sheila Estes



Donna Nally



Babbie Greene

Sherry Haygood



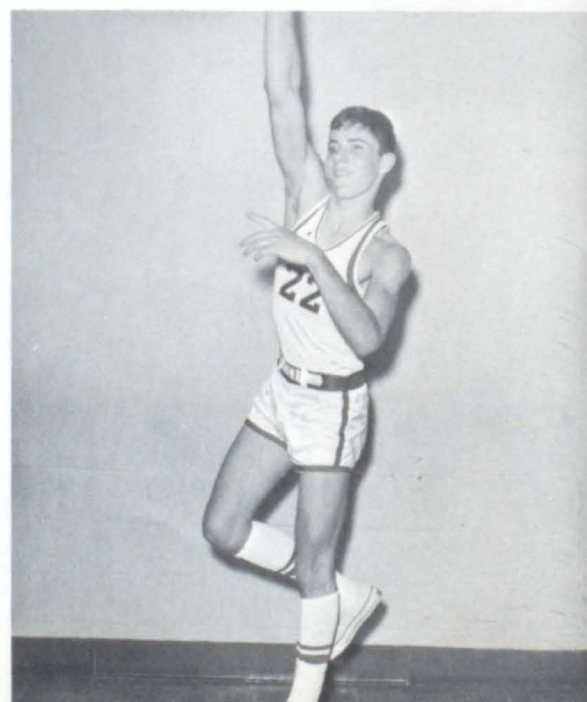




# "V" BOYS



Phil Herring

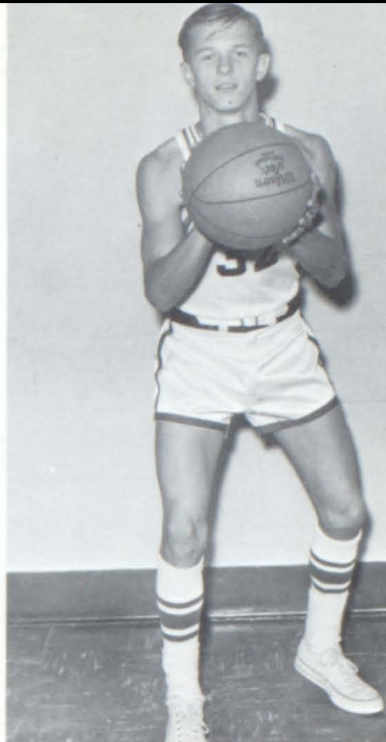


Roger Holcombe



Marcus Wallace

Reggie Cox



Ronnie Jackson



Larry Ellis

Brad Sanderson





Kerry Hansard



David Moore



**"B" TEAM**

**EAGLES**





"B"

G

I

R

L

S



and

E

I

G

H

T

H

Grade

Girls

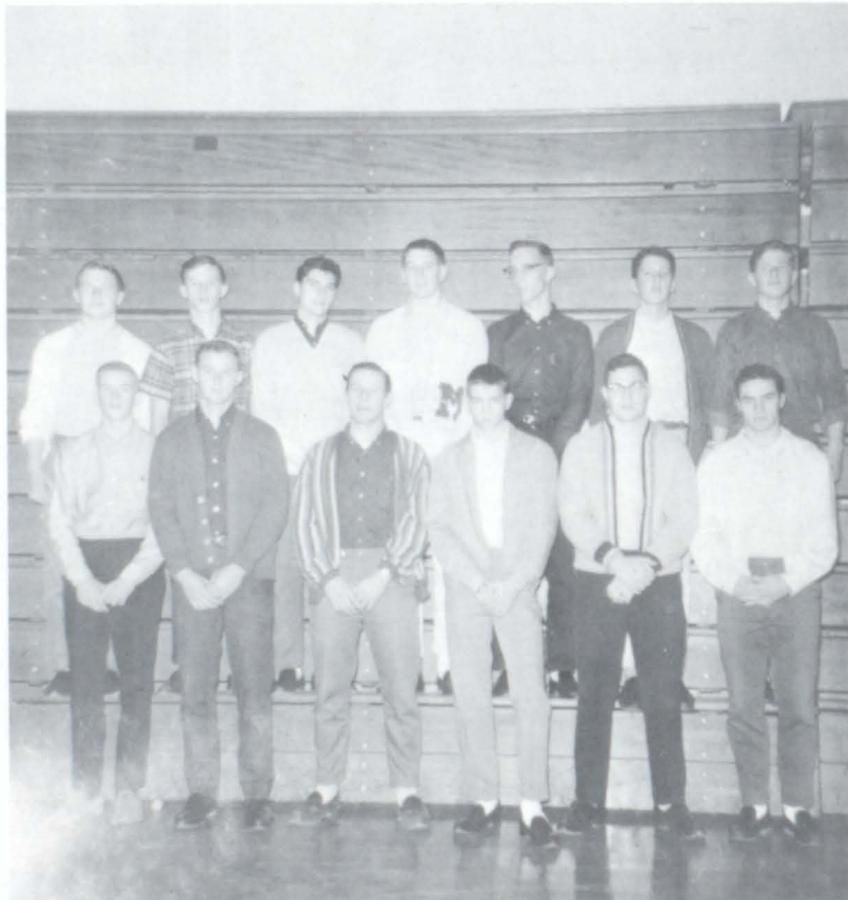


## BASEBALL TEAM

Jerol Garrison, Tommy Henderson, David Jones, Brad Sanderson, Jimmy Hamrick, Eric Walden, David Rayner, Ronny Jackson, and Reggie Cox.

*First Row:*

Billy McCallum  
 Tony Cox  
 Sammy Martin  
 Kenny Anderson  
 Deryl Ingram  
 Thomas Martin



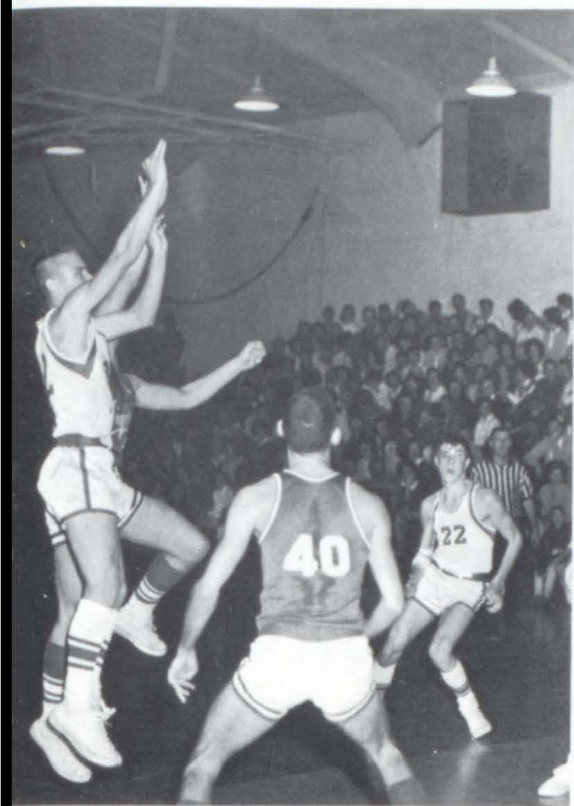
*Second Row:*

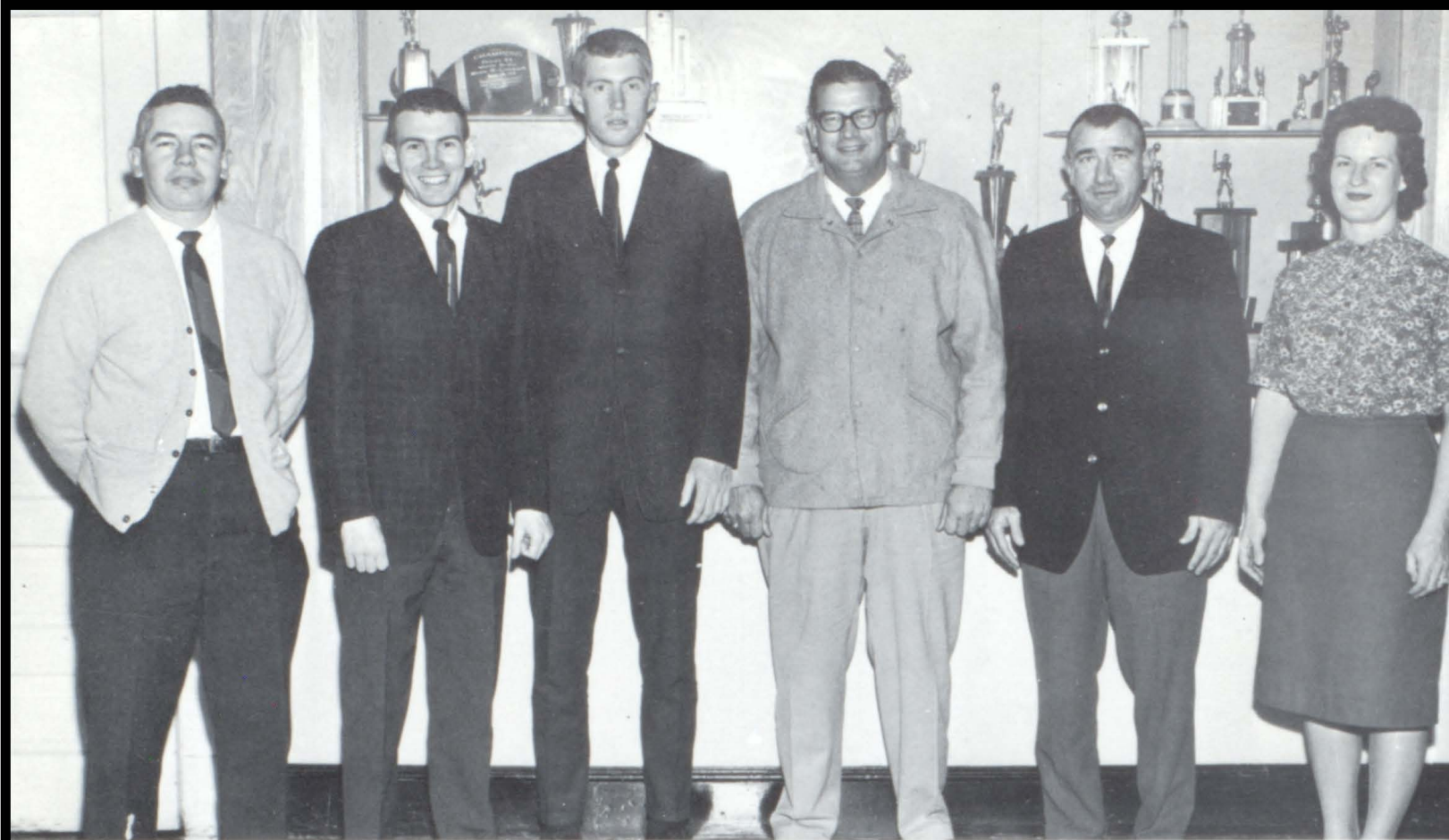
Jimmy Hamrick  
 Ronnie Jackson  
 Doug Elliott  
 David Alley  
 Terry Byrd  
 Kerry Hansard  
 Troy Waddell

## TRACK TEAM

THESE ARE

CHOICE SHOTS





*Left to Right: Mr. Hawkins; Mr. Boardwell; Mr. Eskew; Mr. Fields; Mr. Letchus and Mrs. Hern.*

The coaching staff here at Milton is one we all can be proud of. The constant improvements by this year's teams is a fabulous example of their efforts, and hard work.

To Mrs. Hern and Mr. Eskew, who were at Milton for the first year and who did a fine job, we hope that you enjoyed us as much as we enjoyed you.

We sincerely wish to you all the best of luck in the coming years and we want you to know that we think your role in school good will and spirit is one that can never be replaced!

We also want to congratulate Mr. Hawkins and the Lady Eagles for a fine job in the tournaments. We look for greater things in the coming seasons!

KEEP UP THE GOOD WORK!

# Remember this. . .

## A PLAYER'S PRAYER

I don't want to be a-whimperin', Lord,  
Or a quitter, when the game gets rough;  
I don't want to be a slacker, Lord,  
When the playing's hard, and the going's tough.

I don't want to be a cheater, Lord,  
Or a loafer, when the pressure's light;  
I don't want to be a winner, Lord,  
If I can't do the winning right.

I don't want to play for glory, Lord,  
Or retaliate for unclean play;  
I want to play it fair and clean, Lord,  
All the time, and all the way.

I don't want to be an alibier, Lord,  
Or justify myself when I am wrong;  
I only want to give my best, Lord,  
And in thy strength alone be strong.

— Written by Patsy Neal



# SWEETHEART BALL



# A C T I V I T I E S

EDITOR:  
JEAN DAY





# HOMECOMING



## COURT

*Left to Right: Pat Marshall, Pat Walker, Nita Sims, Gail McGinnis, Sharon Christopher, and Jean Day.*



Gail was elected Homecoming Queen by the varsity football players because of her friendliness, popularity and charm. Gail participates in many school activities.

Jimmy was elected Mr. Football by the varsity cheerleaders. He is also a Senior Superlative, captain of the football team and President of the Senior Class.

# DRAMATICS CLUB COMPETITION PLAY



## "THE LAST CURTAIN"

The Dramatics Club entered the Region AA competition play at Newnan. They presented "The Last Curtain," a one act play by Neal L. Hosey. Milton placed second in the region competition.

### THE CAST

*Jeanie Hart*  
Jane Phillips

*John Wilkes Booth*  
Allen Green

*Effie Evans*  
Donna Ellis

*Sam Evans*  
Kenneth Barfield

*Kate Truman*  
Sharon Christopher

*Peanut John*  
Gary Cagle

*Director* — Mr. John Massey



We've had fun, haven't we?





*"Don't you leave this house!"*



*"Aunt Cordelia!"*



*"Oh.... Dickie Boy!"*

*"You Darling.... I must kiss you."*

*"Confusion"*





## "INTRODUCIN' SUSAN"

"Introducing Susan" was a comedy based on mix-ups. Dick Heathersby got into plenty of trouble with three characters (one of them a man) posing as his wife, but when his real wife, Susan, shows up at an inopportune time... things really start to pop. Violet, the butler-loving cook, and her prize fighting brother pulled a lot of laughs as did the rest of the cast.

### CAST

*Dick Heatherby*.....Don Halverson  
*Susan*.....Sandra Henderson  
*Buddy Chalmers*.....Larry Bennett  
*Babs Boswell*.....Fay Samples  
*Hillington Ross*.....Jimmy Ellis  
*Diana Mayfield*.....Gale Walker  
*Violet*.....Gay Edwards  
*Cyclone*.....Barry Coleman  
*Aunt Cordelia Quackenbush*.....Donna Ellis  
*Susan's father*.....Lamar Cox  
*Mike*.....Troy Waddell  
*Ike*.....Jimmy Turner

*"Oooops! I forget my lines."*

*"Easy now, Cyclone."*



*Director*  
 Mr. John Massey  
*Stage Manager*  
 Susan Manning  
*Assistant Stage Manager*  
 Mahala Chrisler  
*Make-Up*  
 Pat Walker  
*Props and Costumes*  
 Nita Sims  
 Alice Mauldin  
 Barbara Phillips  
 Gail McGinnis



<b>Automobiles</b>	<b>N</b>
<b>Bicycles</b>	<b>O</b>
<b>Clothes</b>	<b>P</b>
<b>Dishes</b>	<b>Q</b>
<b>Eggs</b>	<b>R</b>
<b>Furniture</b>	<b>S</b>
<b>Guns</b>	<b>T</b>
<b>Homes</b>	<b>U</b>
<b>Ice</b>	<b>V</b>
<b>Jewelry</b>	<b>W</b>
<b>Kittens</b>	<b>X</b>
<b>Lamps</b>	<b>Y</b>
<b>Mirrors</b>	<b>Z</b>

otions

boes

ants

uirts

entals

toves

ools

kuleles

iolins

ashers

ylophones

achts

ithers

# ADVERTISEMENTS

EDITORS:

LARRY MANUS

BARBARA MATHIS

CONGRATULATIONS TO

MILTON HIGH SCHOOL CLASS OF 1964

FROM

**AMERICAN LEGION POST 201  
AUXILIARY UNIT 201  
AND  
SON OF THE AMERICAN LEGION  
SQUADRON 201**



THE AMERICAN LEGION AND ITS AUXILIARY ANNUALLY SPONSOR MORE

AMERICANISM PROJECTS IN OUR NATION'S SCHOOLS THAN ANY

ORGANIZATION IN THE WORLD.



COMPLIMENTS OF  
**LOVABLE BRASSIERE COMPANY**

**J. W. PRUITT & SON USED CARS**

*"We Specialize In One Owner Autos."*

*Fair Price and Easy Terms*

Phone 475-5021

Alpharetta,

Georgia

CONGRATULATIONS TO THE CLASS OF '64

**MILTON HIGH P.T.A.**

*President - Mrs. Ralph Kirby*

**Jack's**

*Men's &  
Ladies  
Wear!*

*Latest Styles In*

*Men's and Women's Apparel*

Alpharetta, Georgia

Compliments of  
**TALK OF THE TOWN BEAUTY SHOP**

Your Creative Hairstyler  
We Have Complete Line of Revlon Products

New Location  
Across from Drive-In Theatre  
Phone 475-6776

Alpharetta,

Georgia

Compliments of  
**BUICE'S APPLIANCE**



Phone GR 5-4393

Alpharetta,

Georgia

**C. B. GARRISON**

Residential

Rewiring



Wiring

Repair

Route 4 - Phone GR 5-6313

Alpharetta,

Georgia

Compliments of  
**'64 CHEERLEADERS**

Capt. Jean Bishop  
Co-Capt. Carolyn Jones  
Janice Barfield  
Sheila Rucker  
Sandra Nalley  
Faye Samples  
Melba Henderson

Compliments of  
**ALPHARETTA FLORIST**



Flowers for all Occasions  
Jones Avenue  
Phone 475-5605

Alpharetta,

Georgia

**CANTON DRUG CO.**



Rexall Drugs in South Canton  
Phone 479-5521

Canton,

Georgia

Compliments of  
**PRUITT'S RADIO & T. V. SERVICE**

Located 1½ Miles N. of Alpharetta - Highway 19  
Carter Pruitt, Owner  
Phone 475-5751

Alpharetta,

Georgia

**MULLINAX BARBER SHOP**

Complete Barber Work  
Tues. - Sat. 7-7  
Main Street  
Alpharetta, Georgia



*Compliments of*

**FINLEY AUTO PARTS**

Alpharetta

Georgia

**BIRMINGHAM SERVICE STATION  
&  
GARAGE**

Route 3

Phone GR 5-9010

Alpharetta

Georgia

*Compliments of*

**ALPHARETTA BUILDERS SUPPLY**

Clark Turner

&

Truman Grizzle

Alpharetta,

Georgia

**RALPH DANGAR**

*Real Estate*

*Free Appraisals*

Phone 993-9070

Roswell,

Georgia

*Compliments of*

**DAIRY QUEEN BRAZIER**

475-6664

Alpharetta,

Georgia

**ROSWELL CLEANERS**

*Complete Laundry and*



*Sanitone Cleaning*

*Compliments of*

**COKER'S HATCHING, INC.**

Route 2

Phone GR 5-7455



Alpharetta,

Georgia

*Compliments of*

**SQUARE HARDWARE**

Phone 993-9511

Roswell,

Georgia

Compliments of  
**ETOWAH BANK**



Canton, Georgia

Compliments of  
**EGG ACRES**

Phone 993-4411

Roswell, Georgia

**THOMAS BEAUTY SHOP**

*Hair Styling – Tinting – Dyeing*

*Permanent Waving*

Phone 993-6942

Roswell, Georgia

Compliments of

**JOE COLEMAN**

Alpharetta Standard Service Station

Phone GR 5-6121

Alpharetta, Georgia

Compliments of

**NORTHWESTERN ELEMENTARY SCHOOL**



Crabapple, Georgia

Compliments of

**CUMMING 5 AND 10 CENT STORE**

Carl Jackson, Owner

Cumming, Georgia

**LAKE LANIER SPORTING GOODS**

Emmett Hansard, Owner

Phone TU 7-2439

Cumming, Georgia

Compliments of

**T. G. SHAW and SON**

Roswell, Georgia

*"An Education Is Priceless – Use It Wisely"*



## **SONOCO PRODUCTS CO.**

Atlanta,

Georgia

*Compliments of*

## **BARNETT BROTHERS**

Phone 475-6511

Alpharetta,

Georgia

*Compliments of*

## **PHILLIPS VARIETY STORE**

Phone 475-5444

Alpharetta,

Georgia

*Compliments of*

## **GREENLAWN CEMETERY CORP.**

*(The Perpetual Cemetery)*

*Compliments of*

**REEVE'S FOOD TOWN**

Roswell,

Georgia

*Compliments of*

**HAWKINS FEED AND SEED, INC.**



Phone 993-2421

Roswell,

Georgia

*Compliments of*

**SMITH'S 5¢ & 10¢ STORE**

Roswell,

Georgia

*Compliments of*

**ROSWELL MOTOR COMPANY**



*Sales*

*Service*

Phone 993-4422

Roswell,

Georgia

**CHUCK WAGON RESTAURANT**

Phone 993-9296

16 Oak Street

Roswell,

Georgia

**BAGWELL & MATHIS TIRE CO.**

*Tires, Recapping, Road Service*

Phone TU 7-2351

Cumming,

Georgia

**GORDON'S**

*"For those who care what they wear"*

Cumming,

Georgia

**MASHBURN'S COIN-A-MATIC LAUNDRY**

Highway 19

Phone 475-6244

Alpharetta,

Georgia

*Compliments of*

**HERB THOMPSON**

CONGRATULATIONS

FROM

**CITIZENS BANK OF ALPHARETTA**



*Member of the Federal Deposit Insurance Corporation*

*Compliments of*

# THE ROSWELL BANK



*A Member of the Federal Deposit Insurance Corporation*

CONGRATULATIONS TO THE CLASS OF '64

## ROSWELL MFG. CO.

## Alpharetta Division

Alpharetta,

Georgia



**ROSWELL AUTOMART**

691 Atlanta Street

*New & Used Cars*

Owners: Guy White, Peter Tallant

Phone 993-4494

Roswell,

Georgia

*Compliments of*

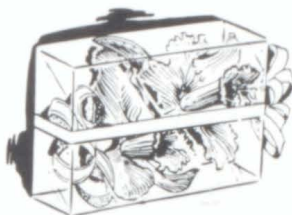
**F. W. WOOLWORTH'S**

Sandy Springs,

Georgia

*Compliments of*

**IRELAND FLORIST**



*Flowers for all Occasions*

1094 Green Drive

Phone 993-6861

Roswell,

Georgia

*Compliments of*

**CRABAPPLE SAUSAGE CO.**



Phone 993-6066

Roswell,

Georgia

*Compliments of*

**CARROLL'S JEWELRY  
AND RECORD SHOP**

Phone 993-6613

37 Oak St.

Roswell,

Georgia

*Compliments of*

**SMITH'S AUTO SERVICE**



Roswell,

Georgia

*Compliments of*

**FARM & ACREAGE REALTY CO.**

S. Main Street

J.M. Danger

Office 475-7371

Home 475-5055

*Compliments of*

**CHADWICK'S STORE**

*Groceries and General Merchandise*

Route 1 - Phone GR 5-5110

Woodstock,

Georgia

*Compliments of*

## DIAL CLEANERS and LAUNDRY

3426 Shallowford Road

Buford Highway

Phone GL 7-7463

Chamblee, Georgia

285 Mt. Vernon Highway

Phone GL 5-0815

Sandy Springs, Georgia

44 Milton Avenue

Phone GR 5-5736

Alpharetta, Georgia

*Reeder & McGaughey,*

*Inc.*



*"Specialists in Sports"*

50-52 Broad Street, N.W.

ATLANTA,

GEORGIA

## DURHAM and TAYLOR SUPPLY COMPANY

*Concrete Products*

*Septic Tanks - Drain Tile*

*Bell and Sewer Pipe and Fittings*

PHONES

GR 5-5609 Days Only

GR 5-5627 Day or Night

ALPHARETTA,

GEORGIA

*Congratulations to the*

*Class of '64*



# SAWNEE ELECTRIC MEMBERSHIP CORPORATION

"A RURAL ELECTRIC CO-OPERATION"

"Owned by Those We Serve"

CUMMING,

GEORGIA

## LOUIE E. JONES FUNERAL HOME, INC.

*Prompt 24 Hour Ambulance Service*

Phone 475-6554

If No Answer Phone

475-5524

475-6055

Alpharetta, Georgia

## NORTH ROSWELL BARBER SHOP

*Located in North Roswell  
Shopping Center*

C. A. Castleberry, Jr.

Dean Baker

Roswell,

Georgia

*Compliments of*

## CANTON STREET FURNITURE CO.

Phone 993-9046

Roswell,

Georgia

## BURGESS & STEPHENS

*Bankrupt Stock & Groceries*

*Shoes, Dry Goods*

*Ready to Wear*

Phone 475-5062

Highway 19

Alpharetta,

Georgia

*Compliments of*

## ALPHARETTA APPLIANCE

Alpharetta,

Georgia

## EVERETT BETTIS

*Hardware-Feed-Groceries-Seed  
and Fertilizer*

*Building Materials-Block-Brick*

Route 1

Phone GR 5-5688

Alpharetta,

Georgia

CONGRATULATIONS, GRADUATING CLASS

OF

MILTON HIGH SCHOOL

*It's better than good...it's*

**FOREMOST**

**THE GREAT NAME IN DAIRY PRODUCTS**

WHEN YOU SEE DAIRY PRODUCTS, LOOK FOR THIS TRADEMARK.

**REECE'S QUICK SHOP**

Open 7 days a week  
8 a.m. to 11 p.m.

*"IF YOU CAN'T STOP WAVE"*

*South Main Street*

*Alpharetta,*

*Georgia*

**CUMMING JEWELERS**

*Diamond-Watches-Jewelry  
Guaranteed Watch Repair  
Phone TU7-2417*

*Compliments of*

**DOW JEWELRY CO.**

*Your Discount Jewelry Store  
Phone TU 7-5314*

*Cumming,*

*Georgia*



*Compliments of*

**HEARD'S FLOWER SHOP**

*Phone TU 7-2228*

*Cumming,*

*Georgia*

<p style="text-align: center;"><i>Compliments of</i></p> <p style="text-align: center;"><b>C. P. BRADY AND SON</b></p> <p style="text-align: center;">SALES  SERVICE</p> <p>Alpharetta, Georgia</p>	<p style="text-align: center;"><b>WESTBROOK'S CABINET SHOP</b></p> <p style="text-align: center;"><i>Quality Built Custom Kitchens</i></p> <p style="text-align: center;"><i>Pre-finished</i> or <i>Un-finished</i></p> <p style="text-align: center;">Free Estimate – Phone 475-7395</p> <p>Alpharetta, Georgia</p>
<p style="text-align: center;"><b>BYERS FURNITURE COMPANY</b></p> <p style="text-align: center;"><i>For Gracious Living</i></p> <p style="text-align: center;">Highway 19 at Sun Valley</p> <p style="text-align: center;">Phone 993-6784</p> <p>Roswell, Georgia</p>	<p style="text-align: center;"><i>Compliments of</i></p> <p style="text-align: center;"><b>MAULDIN'S GULF STATION</b></p> <p style="text-align: center;"></p> <p style="text-align: center;">Phone 475-7108</p> <p>Alpharetta, Georgia</p>
<p style="text-align: center;"><i>Compliments of</i></p> <p style="text-align: center;"><b>HICKS BOOKKEEPING SERVICE</b></p> <p style="text-align: center;">Phone 475-5397</p> <p>Alpharetta, Georgia</p>	<p style="text-align: center;"><i>Compliments of</i></p> <p style="text-align: center;"><b>H. H. MARTIN</b></p> <p style="text-align: center;"><i>Groceries and</i> <i>General Merchandise</i></p> <p style="text-align: center;">Webb Road Phone 475-7314</p> <p>Alpharetta, Georgia</p>
<p style="text-align: center;"><i>Compliments of</i></p> <p style="text-align: center;"><b>MILTON HIGH BETA CLUB</b></p> <p>Achievement Character Leadership</p>	<p style="text-align: center;"><i>Compliments of</i></p> <p style="text-align: center;"><b>THOMPSON'S SUPERETT</b></p> <p style="text-align: center;"><i>Independent Gas</i> <i>and Groceries</i></p> <p style="text-align: center;">Highway 19 Free Delivery Phone 475-9032</p> <p>Alpharetta, Georgia</p>

**T. V. APPLIANCE SALES & SERVICE**

Ferguson                      and                      Martin

Phone 475-5619

Alpharetta,

Georgia



*Motorola*

*Norge*

*Emerson*

*and*

*Admiral*

*Compliments of*

**HAROLD DRUMMOND  
JEWELER**

Phone 475-6595  
475-6596

Alpharetta,

Georgia

It was a hard struggle, but we made it and we would like to thank everyone who helped make the 1964 AERIE possible. A very special thank you to Miss Gail Thompson and Mr. Clayton Hawkins, our sponsors, who struggled with us; Mr. E. S. Garmon for a wonderful photography job; The American Yearbook Company, Mr. Bill Brandon, our representative, and Hewett's Photographers. Another thank you goes to the 1964 AERIE Staff and the editors of each section.

We hope you enjoy your 1964 AERIE.

- Sandra & Susan

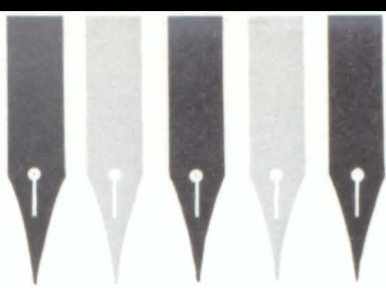
# PATRONS' PAGE

Jerol and Dianne  
Buddy and Mahala  
Howard and Helen  
Paul and Kathy  
Bobby Holcombe  
Miss R.E.C.  
Bot and Karine  
Mr. and Mrs. Ben Trimble  
Mr. Wuichet  
A4-No Failures in '64-Hah!  
Knob's Bootleggers  
Eskew's Hoodlums  
Paula, Darlene, James  
Mayer's Wildcats B 6  
Donna Ellis  
Dale and Royce  
Belita and Carol and Delorise  
Bowes' Bowlegged Brains  
Rambling Recks from A7  
The Flunkers of A7  
A2 Homeroom  
Mrs. Pierce L. Elkins  
B4 Bpham's  
Larry and Gail  
Billy and Janice  
Ronnie and Elaine  
The Birmingham Express  
Miss Gail Thompson  
Mr. and Mrs. Carl Walker  
Rondall and Zelma  
Billy and Velma  
Miss De Loache's Nursery  
Brains of 3rd Period  
Bobby and Brenda  
Mr. and Mrs. Clayton Hawkins  
B-Team Cheerleaders  
Papa Scese's Little Boys  
Mad Scientists of 6th Period

Mrs. Josephine A. Smith  
8th Grade Cheerleaders  
Larry and Pat  
David and Patricia  
Lonnie Hamrick  
2nd Period Sharkie Club  
Douglas and Beverly  
Don and Barbara  
Jimmy E. and Donna C.  
Varsity Cheerleaders  
Gordon's Tongue Waggers  
Wuichet's 3rd Period Ramracks  
Fields' 2nd Period Chemistry  
Rick and Phyllis  
Mr. Grindle  
Mrs. Elliott  
Miss Higgins  
Miss McLemore  
Elliott's Beetles  
Harmon's Hideous Humbrains  
Slaves of Sixth Period Spanish  
1st Period Art Schemers  
Knob's Fore Aces  
David and Nita  
Eskew's Gang  
Douglas and Elaine  
Library Club  
Mr. Batson  
Be-Bop's Homeroom  
Ben K-P 9  
C3 Surfin Birds  
David and Sadie  
Fuzzy McNutts  
Big Hugh Baby  
Junior Johnson Jr.  
Bobby and Sue  
Gary Mulkey

# AUTOGRAPHS





AUTOGRAPHS

