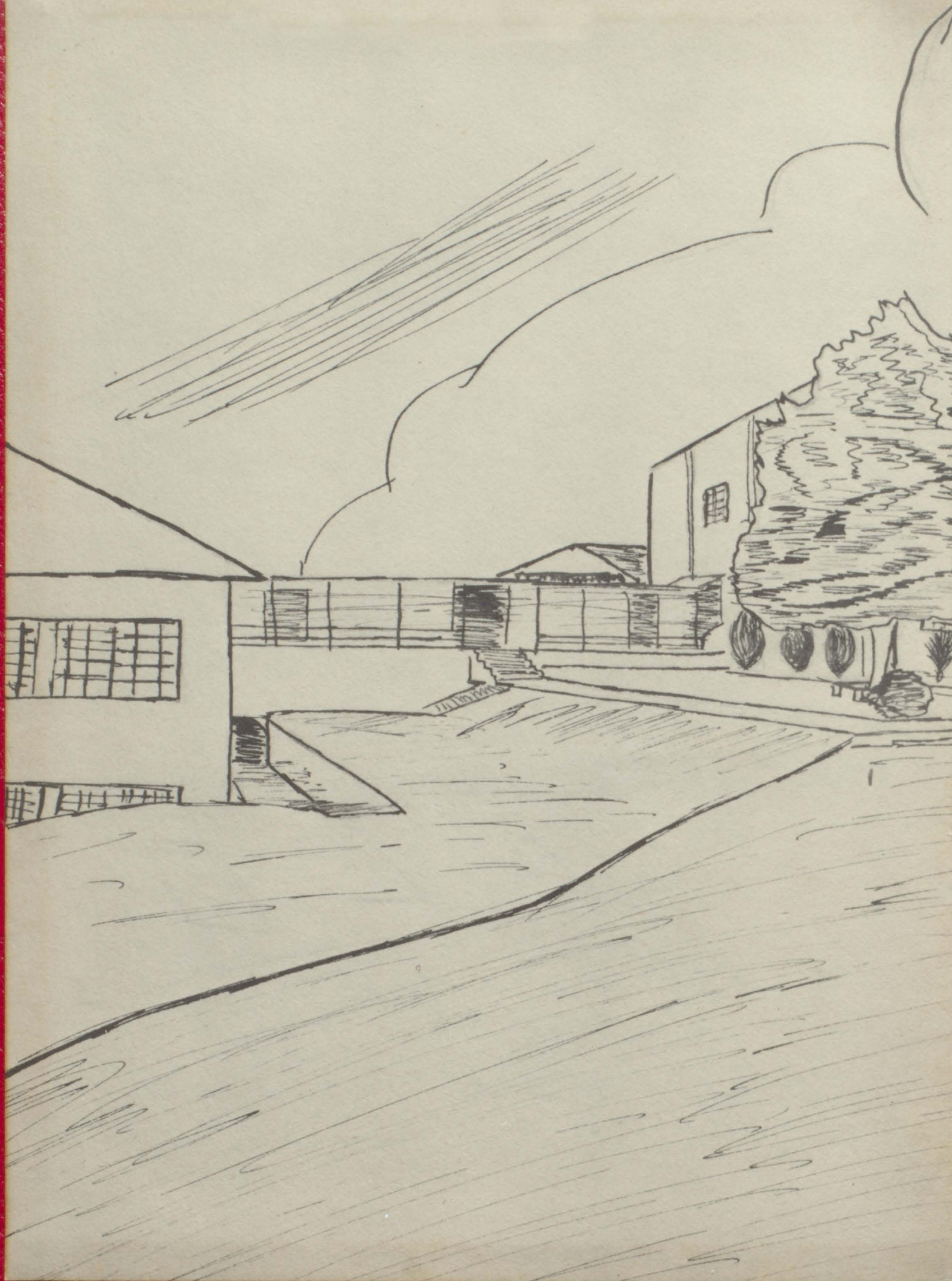




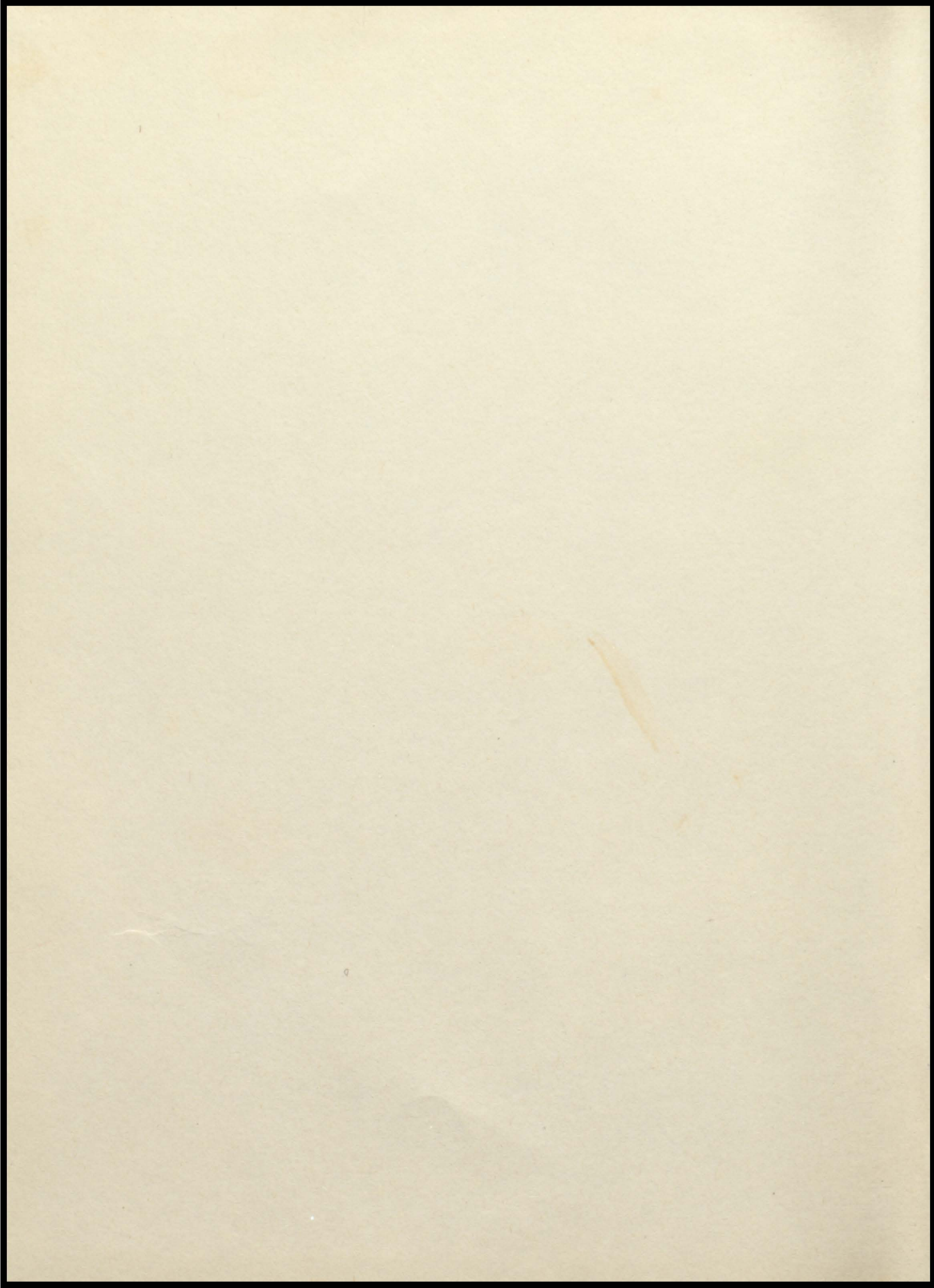
AERIE

1960





Handwritten signature
Milton



The

1960

AERIE



CO-EDITORS

SARAH COWART

JEAN TAYLOR

BUSINESS MANAGER

LINDA TUCKER

Milton High School
Alpharetta, Georgia



it's work



it's play



it's friendship



it's excitement



it's failure

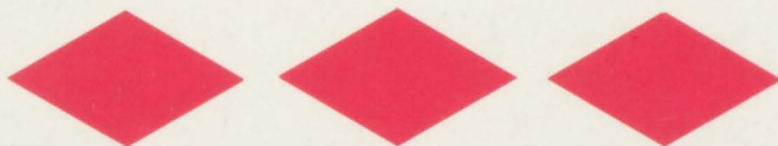


it's success



IT'S

MILTON
HIGH
SCHOOL



Alpharetta, Georgia





To you, MISS WILLIE CHAPMAN

We dedicate the 1960 AERIE

Your lovely smile, your cheerful words, and your helping hands have made you a treasured friend of the many Milton students who have known you.

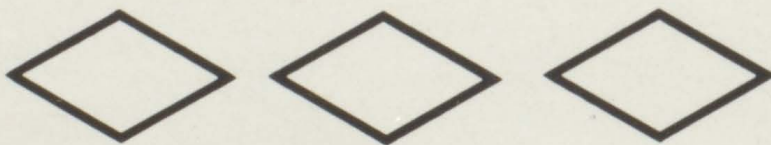
With your thoughtfulness and inspiration, you have added much to our high school years. From our first day in high school to our graduation night, you have always been behind us, challenging and encouraging us to do our best. Your kindness and wisdom have endeared you to all of us.

In appreciation for your outstanding contributions to Milton and to each individual with whom you have been associated, we bestow upon you the honor of this dedication.

DEDICATION







A
D
M
I
N
I
S
T
R
A
T
I
O
N





MR. VICTOR B. HANSARD
Principal



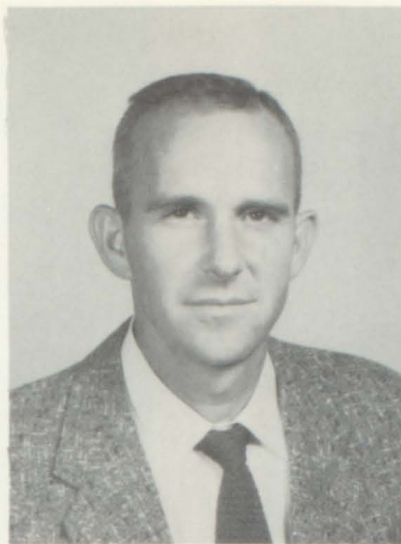
MISS RUTH HIGGINS
Assistant Principal



MR. RALPH WILSON
Counselor



MR. LUCIEN BATSON
Social Science, Language



MR. CARROLL BEAVERS
Physical Education



MR. REUEL BURGESS
Mathematics



MISS ALICE BURTON
Physical Education



MISS WILLIE CHAPMAN
English



MISS RUBY CRAWFORD
English, Spelling



MRS. JOHN M. DICKERSON
Home Economics, Cafeteria



MRS. P. L. ELKINS
Home Economics



MR. P. L. ELKINS
Agriculture



MRS. VAN ELLIOTT
English



MRS. CLINTON GRIMES
Assistant Librarian



MR. MILTON HAMBALEK
Citizenship



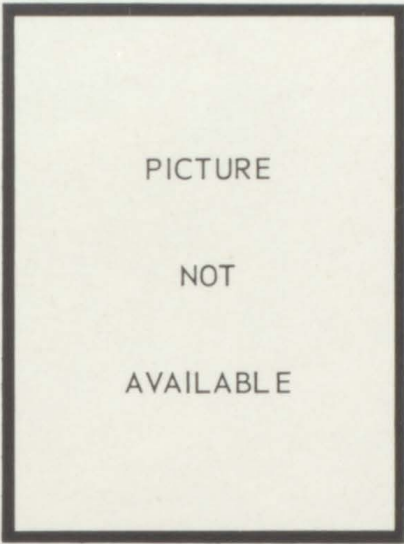
MRS. HILL HARMAN
English



MR. CLAYTON HAWKINS
General Science



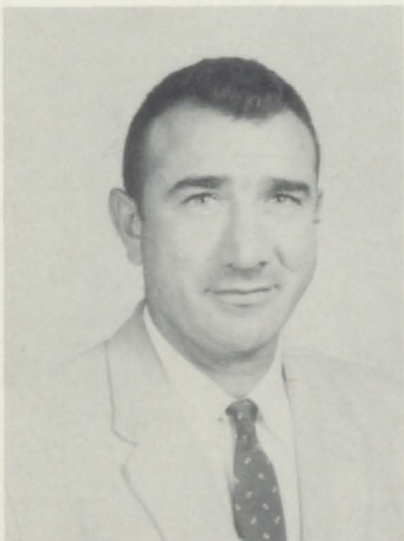
MRS. CATHERINE HESKETH
Band



MR. HAROLD HUGHES
Shop



MISS ANNE LASTINGER
Music



MR. GUS LETCHAS
Mathematics



MRS. BLANCHE MADDOX
Piano



MR. LEE McCONNELL
American History



MISS BETTY McLEMORE
Art



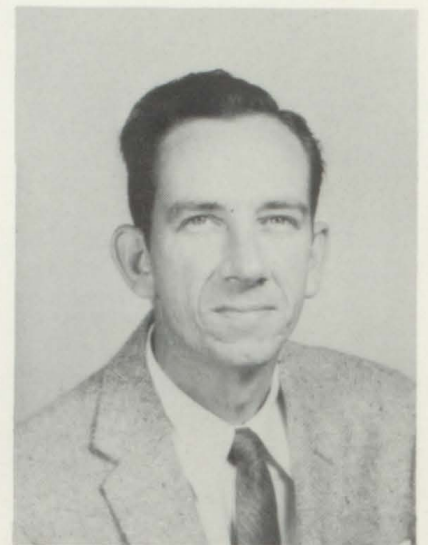
MISS ELEANOR PARADISE
Physical Education



MISS LOTTIE REAVIS
Secretary



MISS MARY RICHARDS
Commercial



MR. BRAD SANDERSON
Biology



MRS. LYNN SHUFELT
Science, Mathematics



MR. JAMES SMITH
Social Science



MISS GAIL THOMPSON
English



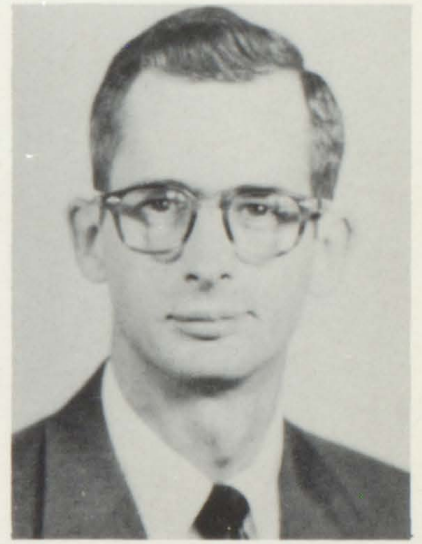
MRS. PETER WILSON
English, Journalism



MISS VIRGINIA WILSON
Librarian



MISS CHRISTINE WOOD
Commercial



MR. LOUIS WUICHET
American History



CAFETERIA STAFF

Mrs. Manning, Mrs. Nunnally,
Mrs. Carruth, Mrs. Hunnicutt.



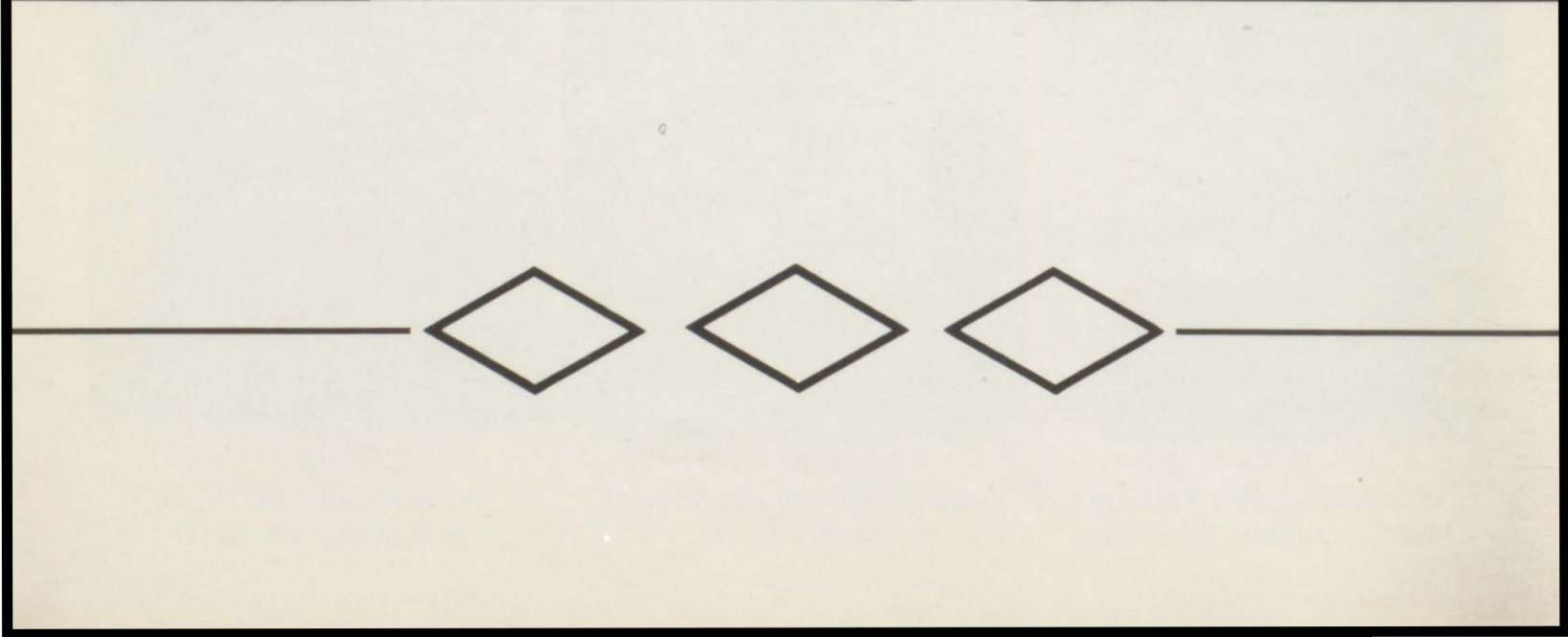
CLEANING STAFF

Miss Webb, Mrs. Abernathy.

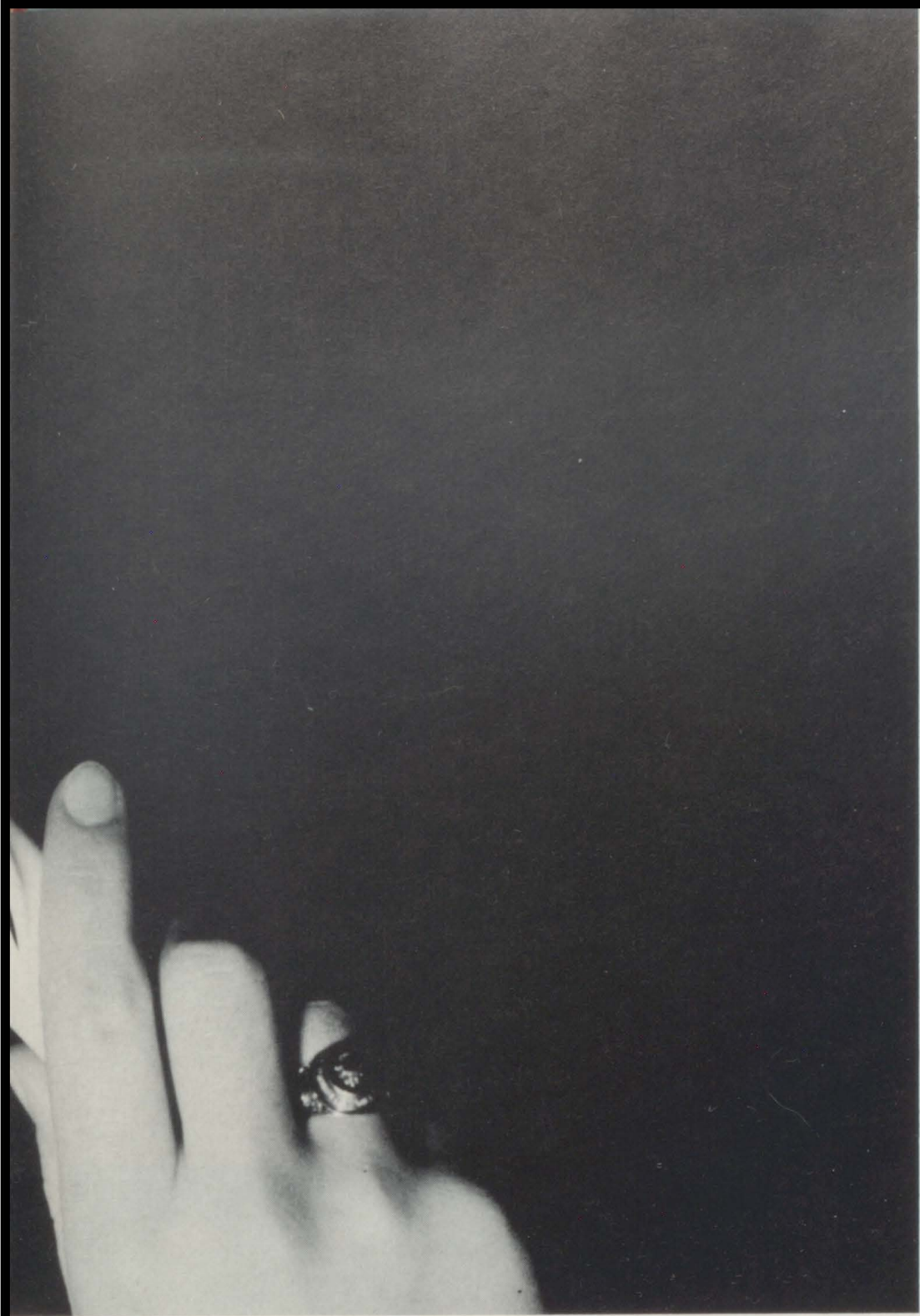


CLEANING STAFF

Mr. Macripodis, Mr. Flynn,
Mr. Maloney, Mr. Webb.



S
E
N
I
O
R
S





SENIOR OFFICERS — Seated: Peggy Turner, Treasurer; Katy Newton, Secretary. Standing: James Phillips, Sergeant-at-Arms; Bob Burgess, Vice-President; Jack Pevy, President.



SENIOR SPONSORS — l to r: Mrs. Lois Wilson, Miss Christine Wood, Miss Ruby Crawford.



MASCOTS — Holly Hansard, Buddy Wilson.

Nuts In May



Here we go gathering Nuts In May!

| | |
|-----------------------------------|--------------------------|
| <i>Cornelia Otis Skinner.....</i> | KATY NEWTON |
| <i>Alden.....</i> | KENNETH SMITH |
| <i>Michael.....</i> | TOMMY HOSEA |
| <i>Ethel.....</i> | WILLORA GUTHRIE |
| <i>Isobel.....</i> | NAN HARMAN |
| <i>Mary Ann.....</i> | BRENDA HOOK |
| <i>Shirley.....</i> | JANE MAULDIN |
| <i>Eve Carrington.....</i> | HILDA HENDERSON |
| <i>Janice O'Neill.....</i> | JEAN TAYLOR |
| <i>Watson O'Neill.....</i> | CLAY JINKS |
| <i>Victoria Shaw.....</i> | DALE WILLIAMS |
| <i>Mrs. Shaw.....</i> | ANNE DINSMORE |
| <i>Maggie Dell.....</i> | ANN CARRUTH |
| <i>Marty and Sam.....</i> | ROY FIELDS, BENNY REEVES |
| <i>Phelps.....</i> | TOMMY ETRIS |



See we do read the paper sometimes!



Mrs. Wilson worried Katy 'till she turned gray!



Mrs. Westmore and Miss Cecil B. Tucker???? At work.



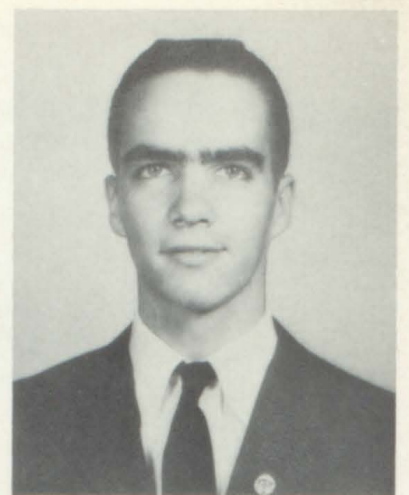
*Look what I brought you, Katy.
A dinosaur!*



BRENDA ABERCROMBIE
*The most valuable articles
 are done up in
 small packages.*



JERRY ANDERSON
*Put off today what you can
 get someone else to do for
 you tomorrow.*



VIRLYN ANDERSON
*Trust no living woman, walk
 carefully around the dead.*

SENIORS



GWENDOLYN ASHERBRANNER
*It's bad to act like a fool,
 but it's worse when you are
 not acting.*



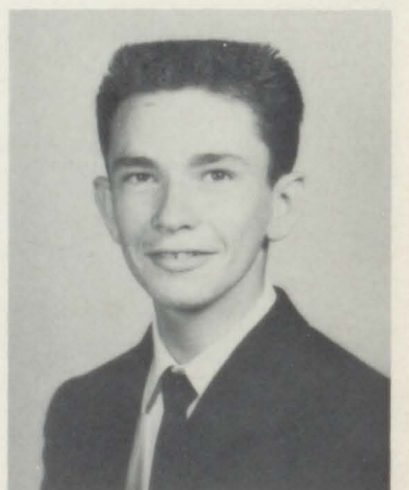
DOUGLAS BATES
*I don't want to set the world
 on fire, I only want to lead a
 lighted path for those who
 follow.*



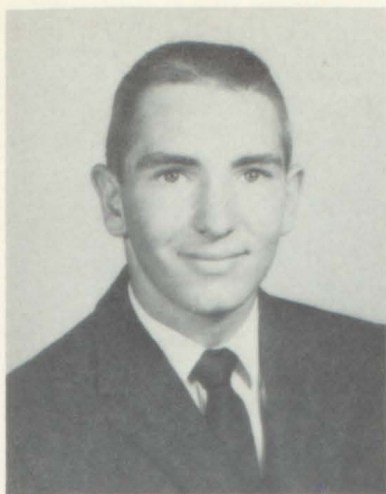
SHIRLEY BLACKWELL
*Always be yourself, no
 matter where you are.*



PATRICIA BOLING
*She loves to laugh, she loves
 to walk, and oh my, how
 she does love to talk.*



JOHNNY BROADWELL
*My real self has yet to come
 forth.*



BOB BURGESS

*Athletic, friendly, and kind,
another like him you'll
never find.*



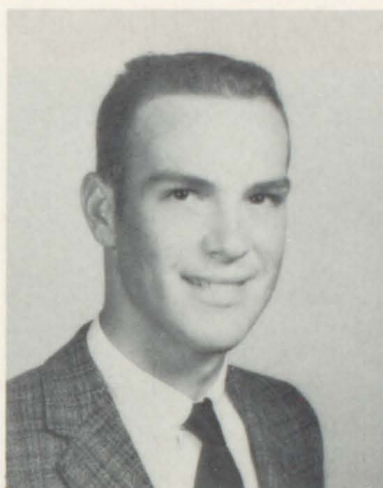
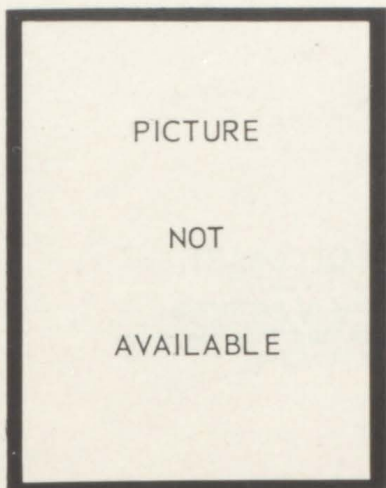
PEARL BURNETT

*Patience and gentleness
is power.*



EDDIE BURRISS

*He does as he would be
done by.*



GERALD BYERS

Good nature conquers all.

SENIORS

RICHARD BIVINS



ANN CARRUTH

*A girl who's sweet, To know
her is a treat.*



CLAUDETTE CARTER

*Not too sober, not too gay,
Just a pal in every way.*



JERRY CARTER

*Men of few words are the
best men.*



FRANKLIN CASH

*Better to die ten thousand
deaths than wound my honor.*



LARRY CASTLEBERRY

*Thou are a mighty lad among
us.*



SARA COCHRAN

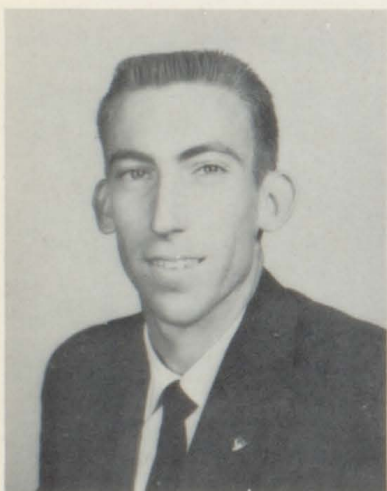
*Her voice is ever soft, gentle,
low; an excellent thing in
a girl.*

SENIORS



SARAH COWART

*A spirit of pertness,
gentleness and intelligence.*



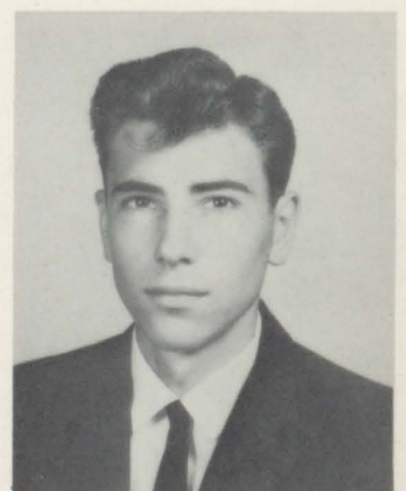
ROGER DAVIS

*A driver is known by the
fenders he keeps.*



ANNE DINSMORE

*The price of wisdom is above
rubies.*



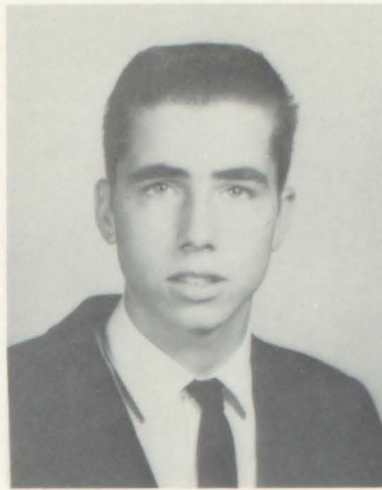
TOMMY ETRIS

*Thou shall make thy way
prosperous.*



AUBREY FERRELL

He never exaggerates, he just remembers.



ROY FIELDS

The trouble is there are so many beautiful women and so little time.



RITA FOWLER

A quiet tongue shows a wise head.

BILLY FLYNN

Live and learn; die and forget it all.



SENIORS



D. C. FLYNN

A man of cheerful yesterdays and confident tomorrows.



ELAINE GANTT

A maid of grace, a true southern belle.



SALLY GARRETT

I know not what the future holds, but I know who holds the future.



WILLORA GUTHRIE

*Pride goeth before
destruction, and a haughty
spirit before a fall.*



VIOLA HALEY

She know no enemy.



VIC HANSARD, JR.

*It's not what you do, it's
what you get caught doing.*

SENIORS



NAN HARMAN

*Life is a picture, so paint it
well.*



HILDA HENDERSON

*A deep thinker, a worker,
and a friend.*



BRENDA HOOK

*There is not a moment
without some fun.*



LaVERNE HOSEA

*Modesty is the true beauty
of woman.*



TOMMY HOSEA

*He seems to possess but one
idea and that is the right one.*



CLAY JINKS

*Don't take life too seriously,
you might not get out of it
alive.*



ELLEN JOHNSON

*He who plays the game fair
wins when he loses.*

HELEN KELL
*Not merely good; good for
something.*



SENIORS



CLEON KELLY

*Plow deep and straight with
all your powers.*



SILVY KIRBY

*Every man has his devilish
moments.*



HILDA LANDRUM

*There was language in her
every gesture.*



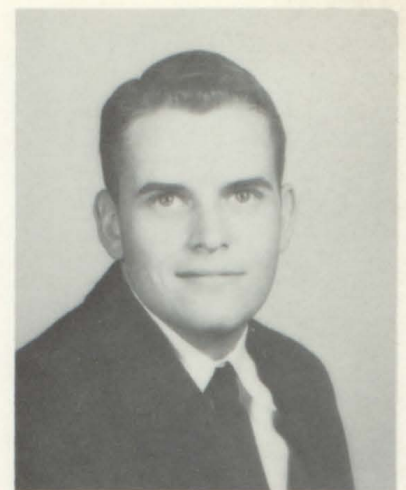
ETHEL LOCKE

She puts her worries in a pocket full of holes.



HERSCHEL LONER

The very peak of courtesy.



LAMAR MANGUM

Not only can he speak well, but he can also listen.

SENIORS



DAVIS MARTIN

A good natured boy is welcome in any company.



JANE MAULDIN

Truth is the highest thing one may attain.



KATY NEWTON

I have often regretted my speech, never my silence.



WILLIAM PADGETT

A regular guy.



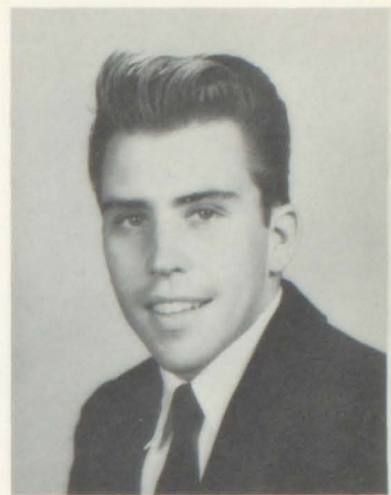
JACK PEEVY

Liberty is too precious a thing to be buried in books.



DON PHILLIPS

Friendliness finds its own road.



JAMES PHILLIPS

To hurry and worry is not my creed, things will happen so what's the need.

RONALD PINKERTON
June is the month when students hope their teachers will take a passing fancy to them.



SENIORS



ROBERT POTEETE

I love work, it fascinates me. I could sit and watch if for hours.



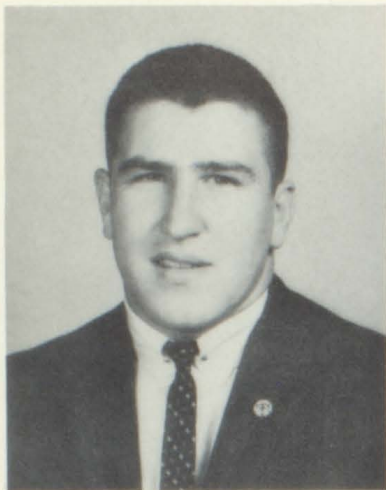
BARBARA PRUITT

It is a friendly heart that has friends.



MARGARET PRUITT

A bit of humor is ever appreciated.



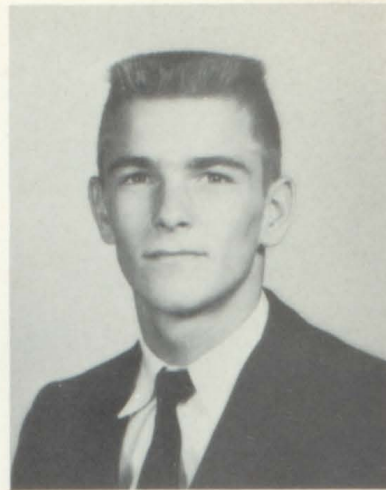
LAMAR RAINWATER

*Two things only a man cannot
hide, that he is drunk and
that he is in love.*



PATRICIA RAINWATER

*Leave silence to the saints,
I am but human.*



BENNY REEVES

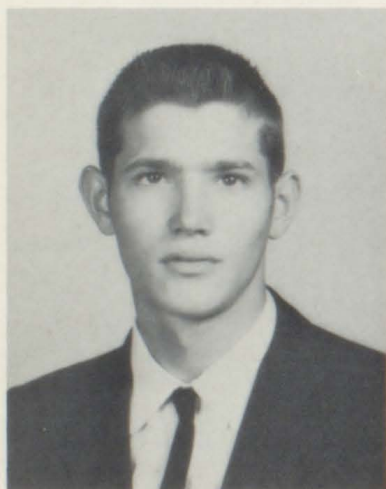
*Have a heart that never
hardens, a temper that never
tries, and a touch that never
hurts.*

SENIORS



MYRA JO RICHARDS

*If we are sincere, fortune is
ours.*



JERRY RIDINGS

*I believe that women will be
the last thing civilized by
man.*



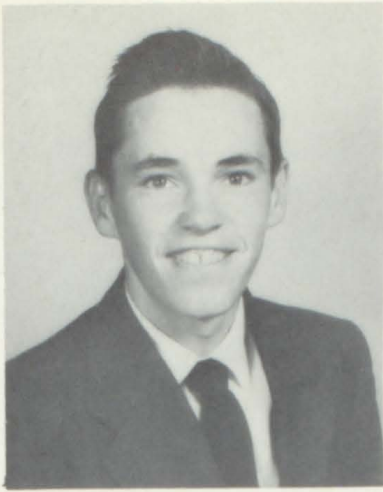
HOWARD RUCKER

*There's a brain between
these two ears; a man
between these two shoulders.*



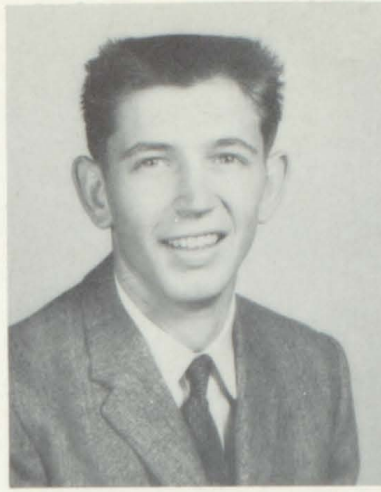
GEORGIA RUSSELL

*She succeeds by merit, not
by favor.*



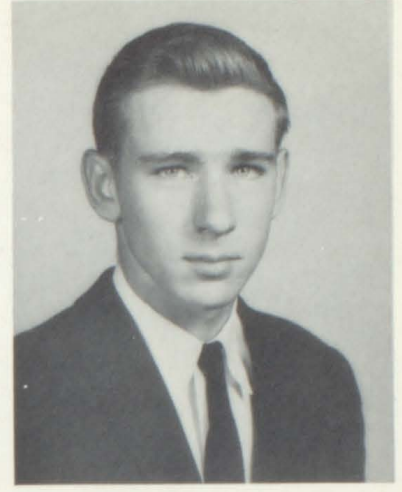
MORRIS SARGENT

*He searches out all
perfection.*



THOMAS SHIRLEY

*Innocence wears a smiling
face.*



KENNETH SMITH

*Of all the arts in which the
skilled excel, Nature's chief
masterpiece is drawing well.*

LOUISE STONE

*A smiling face, a laughing
heart.*



SENIORS



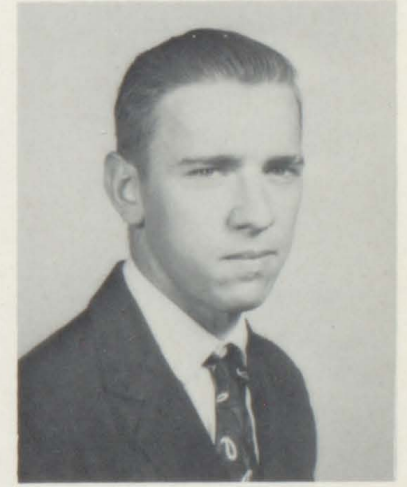
JUDY STRICKLAND

*A smiling face, a laughing
heart.*



MARVIN TATUM

*A man of cheerful yesterdays
and confident tomorrows.*



DONALD TATUM

*Young fellows will be young
fellows.*



JEAN TAYLOR

A lovely face, a lovely person.



BETTY THOMPSON

Charm and pleasure are her playmates.



GAYNELLE TREADAWAY

A voice as sweet as a vesper bell.

SENIORS



LINDA TUCKER

So free, so kind, so blessed disposition.



PEGGY TURNER

Merry and wise, brim full of mischief, spirit, and glee.



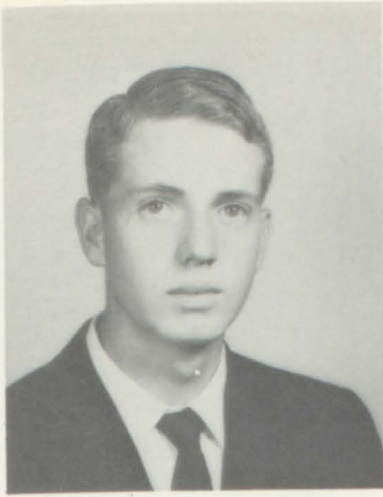
FRANK TWITTY

Thought is deeper than all speech.



PATRICIA WALLACE

Mischief that leads a charmed life.



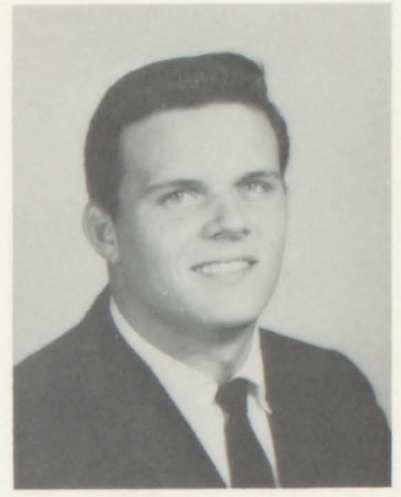
TALMADGE WESTBROOKS

Apply your ability and success is yours for the asking.



DALE WILLIAMS

Slender, and neat, winsome and sweet.



GEORGE WILLS

The toughest pass defense most football players face is put up by their teachers.

SANDRA WILSON
She walks in beauty as the night.



SENIORS



PATRICIA WOOD

Quiet dignity, with proper words in proper places.



BARBARA ANN WRIGHT

Let the good times roll.



SONNY WRIGHT

Life must be measured by thought and action.

DIGNIFIED



Ellen



J. Ridings



Brenda H.



Rita



Sonny



Owen



Peggy



Franklin



Eldie



Brenda A.



Hilda



Jean



Gleon



Judy



Tommy E.



Myra Jo



Marvin



Willian



Barbara



Margaret



Benny



Willora



Ann C.



Howard



Kenneth



Betty



Ethel



Dale



Clay



Anne D.



Vic



Louise



Virlyn



Helen

SENIORS



Pat B.



Linda



Don P.



Kynelle



Douglas



Georgia



Thomas



Hilda H.



Bob



Salvador



Jack



Katy



Sandra



D. C.



Larry



J. Anderson



Gerald



Roy



Nan



George



P. Rainwater



L. Rainwater



S. Gwart



Shirley



Barbara



Silvy



Roger



P. Wallace



Jane

SENIOR

BRENDA ABERCROMBIE

Secretary of Home Room 55-56; Sub-Freshman Superlative 55-56; Music Club 55-56, President 58-59, Vice-President, Reporter 59-60; Vice-President Homeroom 56-57; Science Club 58-60; Majorettes 58-60, Co-Captain of Majorettes 60; School Echoes, Circulation Manager and Make-Up Editor 58-60; One-Act Play 60; Quill and Scroll 59-60; Honor Roll 59-60; Curtis Magazine Winner for American Home; Junior Red Cross, 55; 4-H Club 55-59.

JERRY ANDERSON

4-H Club 57-59; Science Club 59-60.

VIRLYN ANDERSON

4-H Club 55-57.

GWENDOLYN ASHERBRANNER

4-H Club 55-56; Science Club 55-56; Girls' Softball Team 58-59; Figurine Committee for Junior-Senior 59; Civil Defense Program 56-57.

DOUGLAS BATES

FFA 55-56; 4-H Club 55-57; Science Club 56-60; Junior Red Cross 56-57; Senior One-Act Play 60; AERIE Staff 58-60; Homeroom President 55-56, 58-59; Senior Superlative 60.

RICHARD BIVINS

SHIRLEY BLACKWELL

Homeroom President 56-57; 4-H Club 55-56.

PAT BOLING

4-H Club 55-60, President; FHA 55-56; Basketball 56-58; Girls' Chorus 56-60; Glee Club 56-60; Junior Red Cross 55; AERIE Staff 58-60, Class Editor 60; Softball Team 57-58.

JOHNNY BROADWELL

Band 55-56; 4-H Club 55-56; FFA 59-60.

BOB BURGESS

Junior Red Cross 56; Class President 57; Class Vice-President 60; Science Club 57-60, President; Glee Club 58-60, President 60; Student Council 60; Basketball 58-60, Captain 60; B-Team 57; Track 58-60; Football 58-60; Music Club 56-58; Senior Superlative 60; AERIE Sports Staff 59-60.

PEARL BURNETT

4-H Club 56-60; Science Club 58; AERIE Staff 60.

EDDIE BURRISS

FFA 55-57; Science Club 55-60; 4-H Club 55-58.

GERALD BYERS

FFA 55-56.

ANN CARRUTH

FHA 56-60, Treasurer 60; Delegate to FHA Convention 58; Girls' Chorus 57-60, Secretary 60; Basketball 58-60, Captain 59-60; 4-H Club 57-58, Treasurer 58; Glee Club 60, All State Chorus 60; Miss Courtesy Candidate 60.

CLAUDETTE CARTER

JERRY CARTER

Glee Club 56-60; Mr. Courtesy Candidate 60.

FRANKLIN CASH

4-H Club 55-59.

LARRY CASTLEBERRY

FFA 57-60, Secretary 59-60.

SARA COCHRAN

FHA 56-57; 4-H Club 60.

SARAH COWART

Music Club 55-57, Vice-President 56-57; Science Club 58; Library Staff 57-60, Vice-President 57-58; District Treasurer; Beta Club 57-60, Secretary 60; Junior Red Cross 57-59, President and Advisor, District Officer, and Junior Training Staff, Southeast Area Delegate to Leadership Conference 58; School Echoes 59-60, Co-Art Editor and Feature Editor; Senior One-Act Play 60; GSPA and ASPA 58-60; Quill and Scroll 58-60, Secretary 58-59; AERIE Staff 58-60, Circulation Manager 58, Co-Editor-in-Chief 60; Junior-Senior Co-Chairman, 59; Senior Superlative 60; Oratorical Contest 60; Delegate to Delta-Phi Journalism Banquet 60; Honor Roll 55-60; Curtis Magazine Winner for Ladies Home Journal; Betty Crocker Homemaker of Tomorrow 60; Second Place Award for Essay 59.

ROGER DAVIS

4-H Club 54-56.

ANNE DINSMORE

Library Club 57-58, President 58; Beta Club 57-60, Reporter 58-59; AERIE Staff 60; School Echoes 59-60, Associate Editor and Business Manager; Junior Red Cross 59-60, Vice-President 60; Quill and Scroll 59-60; Senior Superlative 60; Candidate for Co-President 59; Honor Roll 58-60; Co-Chairman for Teenage March of Dimes 60; American Legion Auxiliary Essay Contest Winner 59.

TOMMY ETRIS

FFA 55-57; 4-H Club 55-59; Science Club 60.

ACTIVITIES

AUBREY FERRELL

Science Club 55-56; FFA 55-59; Baseball 59-60; 4-H Club 55-56.

ROY FIELDS

Transferred from Ocala High 59; Junior Red Cross 59-60, Secretary; Sub-Freshman Class Superlative 55-56.

RITA FOWLER

4-H Club 56-60; Homeroom President 55-56; Sophomore Vice-President 57-58; Band 56-57; Majorette 57-60; Treasurer of Homeroom 58-59; School Echoes 59-60; AERIE Staff 59-60; Quill and Scroll 59-60; Majorette Captain 59, Co-Captain 58; Senior One-Act Play 59.

BILLY FLYNN

Glee Club 53-54.

D. C. FLYNN

B-Team Football 55-58; Varsity 58-59; 4-H Club 55-58; Science Club 57-60.

ELAINE GANTT

Majorette 57-58; 4-H Club 59-60.

SALLY GARRETT

Transferred in 57; 4-H Club 57-60; FHA 56-58; AERIE Staff 58-60; Science Club 58-59; Square Dance 56-58.

WILLORA GUTHRIE

Girls' Chorus 56-57; 4-H Club 57-60; Quill and Scroll 59-60; School Echoes 59-60, Exchange Editor and Business Manager.

VIOLA HALEY

VIC HANSARD, JR.

Band 55-57; B-Team Basketball and Football 55-56; 4-H Club 55-60; Science Club 56-60; Junior Red Cross 57-60; Glee Club 59-60; Music Club 59-60.

NAN HARMAN

Music Club 55-60; 4-H Club 55; Journalism Clinic at Emory 59; Science Club 59-60; Band 55-58; Basketball 56-57; Junior Red Cross 55; \$100 Club 59; Band Clinic 58; School Echoes Staff 59-60, Co-Art Editor and Co-Sports Editor.

HILDA HENDERSON

Homeroom President 55-58; Glee Club 57-58; Basketball 57-58; Music Club, Vice-President 56-60, Critic 57-58; Science Club 57-58; AERIE Staff 59-60; FHA 55-56; Co-President of Student Body 59-60; Student Council 59-60; Girls' State 59; Thrift Forum 59; Delegate to Student Council Workshop at Emory 59.

BRENDA HOOK

4-H Club 56; FHA 57-59; Science Club 58-60; Music Club 56-59, Treasurer 60; Girls' Chorus 57-59; Glee Club 58-60; Girls' Ensemble 59-60; Music Reading Clinic, All State Chorus; Basketball 58; School Echoes 59-60, News Editor, Make-Up Editor; AERIE Staff 59-60; Majorette 57-60, Captain 60; Senior Superlative 60; Senior One-Act Play.

LaVERNE HOSEA

Transferred from Mead Hall, South Carolina 58; Basketball 58-59; Homecoming Queen Candidate 58-59.

TOMMY HOSEA

Transferred from Aiken, South Carolina 58; Class Superlative 60; Football 58-60; Track 58-60; AERIE Staff 60, Sports Editor; School Echoes 59-60, Sports Editor and Editor.

CLAY JINKS

FFA 55-56.

ELLEN JOHNSON

FHA 56-60, Song Leader 60; 4-H Club 56-60, Song Leader, Vice-President, President, Member of 4-H Congress; Basketball Manager 56; Basketball 57-60, Co-Captain 60; Girls' Chorus 57-60, President 59, Vice-President 60; Small Ensemble 58-60; Junior Red Cross Representative 58-60, Secretary 58; Music Festival 58-59; Senior Superlative 60; Girls' Chorus Music Clinic 60.

HELEN KELL

Library Club 57-58; 4-H Club 60; FHA 56-60.

CLEON KELLEY

4-H Club 55-60; Secretary 57; FFA 55-56; B-Team Football 56; Glee Club 58-60; District Winner in Public Speaking 57; Science Club 57; District Winner in Poultry in 4-H 55.

SILVY KIRBY

FFA 55-56; 4-H Club 55-59; Science Club 57-59; Baseball 57-60; Football 59-60; AERIE Staff 59-60.

HILDA LANDRUM

4-H Club 55-57; Science Club 56-58; FHA 55-57.

ETHEL LOCKE

Sophomore Secretary-Treasurer 57-58; FHA Secretary 57-60; Basketball 57-60; Science Club 59-60; Junior Secretary-Treasurer 58-59; Junior Red Cross 57-59; Student Council 57-59; AERIE Staff 58-59.

HERSCHEL LONER

Baseball 57-60; Basketball 59-60, B-Team 58; FFA 58-60, Vice-President 59-60; Band 56.

SENIOR

LAMAR MANGUM

4-H Club 55-56; Science Club 59-60.

DAVIS MARTIN

4-H Club 55-60; FFA 59-60.

JANE MAULDIN

4-H Club 55-57; Homeroom Treasurer 56-57; Music Club 55-56; Science Club 55-60; Junior Red Cross 56-57; Girls' Chorus 57-58; Girls' Softball Team 57; Majorette 56-58; Honorable Mention Dental Health Week Essay Contest 58; FHA 57-60; FTA 58-60, Vice-President 58-59, President 59-60; AERIE Staff, 59-60, Advertising; Philatheans 59-60.

KATY NEWTON

Girls' Chorus 57-59, Vice-President 59; Glee Club 58; FHA 57-60; Science Club 57-60; FTA 59; Music Club 59-60, President 60; Attended Girls' State in 59; School Echoes Staff 60, Associate Editor 60; AERIE Staff 59-60; One-Act Senior Play 60; Curtis Magazine \$100 Club, First Day High Salesman; Student Council 60, Secretary; Secretary of Senior Class 60; Senior Superlative.

WILLIAM PADGETT

4-H Club 55-60; FFA 59-60; Baseball 57-60; B-Team Basketball 57.

JACK PEEVY

4-H Club 55-57; FFA 55-56; Science Club 56-60; Scholarship to Summer Science Institute, Emory University 59; School Echoes, 59-60, Editor-in-Chief, Sports Editor; Quill and Scroll 59-60; Senior Class President 59-60; Student Council 59-60; Senior Superlative 59-60.

DON PHILLIPS

FFA 55-56; 4-H Club 55-60.

JAMES PHILLIPS

Glee Club 59-60; Football 56-60; Student Council 60; Homeroom Vice-President 58; Sergeant-of-Arms of Senior Class 60; Senior Superlative 60; All State Chorus 60.

RONALD PINKERTON

B-Team Football 56-57; B-Team Basketball 56-58; Varsity Football 57-60; AERIE Staff 58-59, Activities, Sports Staff; Science Club 56-60, Vice-President 59-60; Music Club 55-57; Junior Red Cross 56-57; Homeroom President 55-56, 59-60; Senior Superlative 60.

ROBERT POTEETE

BARBARA PRUITT

4-H Club 55-56.

MARGARET PRUITT

Transferred 56; 4-H Club 54-57; FHA 56-57.

LAMAR RAINWATER

Football 55-60; Science Club 55-60; Music Club 57-60; AERIE Staff 56-59; Fire Marshal 59-60.

PATRICIA RAINWATER

FHA 56-59; Science Club 57-58; 4-H Club 56-60.

BENNY REEVES

Band 55-58; 4-H Club 55-60; Senior Superlative 60.

MYRA JO RICHARDS

4-H Club 56-57; Mixed Chorus 59-60; Girls' Chorus 57-58.

JERRY RIDINGS

Band 55-60; Science Club 56-57.

HOWARD RUCKER

Football 56-57; Baseball 56-60; Science Club 58-60; FFA 56-57; AERIE Staff 58-60; Senior One-Act Play.

GEORGIA RUSSELL

Music Club 55-60; Girls' Chorus 56-57; FHA 56-58; 4-H Club 57-58; Beta Club 58-60; Junior Red Cross 59-60; AERIE Staff 59-60, Ad Staff 58-59; Softball 57-58.

MORRIS SARGENT

FFA 56-60; 4-H Club 56-60; Science Club 58-59.

THOMAS SHIRLEY

FFA 55-56; Baseball 58-60.

KENNETH SMITH

4-H Club 55-56; Science Club 56-59; Beta Club 58-59; Student Council 56-60, Co-President 60; Boys' State 59; Student Council Convention 59; Vice-President of Class 56-58; Sewanee Club Award for Excellence 58.

LOUISE STONE

FHA 56-58; 4-H Club 60; Music Club 56-58; Transferred 58.

ACTIVITIES

JUDY STRICKLAND

FHA 58; 4-H Club 56-58; Junior Red Cross 56-57; Science Club 58; AERIE Staff 59-60.

MARVIN TATUM

FFA 54-57; B-Team Football 54-56; Science Club 58-59; Track 57-60.

JEAN TAYLOR

Sub-Freshman Class President 55-56; Sophomore Superlative 57-58; Junior Class President 59; Beta Club 57-60, Vice-President 58-59, President 59-60; FHA 56-59; AERIE Staff 58-60, Class Editor 58-59, Co-Editor 59-60; Band 56-58; School Echoes 59-60; Candidate for Co-President 58-59; Quill and Scroll 58-60; Senior Superlative 59-60; Delegate to Delta-Phi Journalism Banquet 59-60; Delegate to Thrift Forum 58-60; Candidate for Homecoming Queen 58-60; Honor Roll 55-60; Student Council 58-59; Official Delegate to Student Council Camp 59; Curtis \$100 Sales Club; American Legion Oratorical Contest 60; Delegate to GSPA 58-60; Delegate to ASPA Meeting 60.

BETTY THOMPSON

4-H Club 57-58.

GAYNELLE TREADAWAY

Transferred in 55; Glee Club 55-60; Girls' Chorus 56-59, President 59-60; Music Club 57.

LINDA TUCKER

FHA 56-60, President 60; 4-H Club 56-60, President 59; Band 57-58; AERIE Staff 59-60, Business Manager; Delegate to FHA Convention; Delegate to Southeastern Fair 59; Secretary of Homeroom 55; Vice-President of North Fulton 4-H Council 59; Quill and Scroll 59-60.

PEGGY TURNER

FHA 56-60; Science Club 60; Majorette 59-60; Student Council 59-60; Senior Officer 59-60; Girls' Chorus 57-59; 4-H Club 56-57; Glee Club 59-60; Junior Red Cross 58; Fashion Show 57; Basketball 57-60; Softball Team 59; Senior Superlative; Decorating Committee for Junior-Senior Prom 59; AERIE Staff 60.

FRANK TWITTY

PATRICIA WALLACE

Homeroom Vice-President 55-56; Science Club 57-60, Treasurer 59-60; Music Club 58-60, Secretary 59-60; AERIE Staff 58-60; Activities Editor; Delegate to GSPA 59; Girls' Chorus 57-60; Mixed Chorus 59-60; Music Reading Clinic 59-60; All State Chorus 60.

TALMADGE WESTBROOK

FFA 56-59; 4-H Club 55-58.

DALE WILLIAMS

Transferred from Chamblee 56; FHA 57-60, Pianist 60; Music Club 57-58; AERIE Staff 60; Fashion Show 57; Junior Red Cross 58-60, President, Secretary; Weekend Camp 59-60; Talent Show for VA Hospital 57-60; Homeroom Vice-President 58; Theme Committee for Junior-Senior Prom 59; Softball Team 59; FHA Fashion Show 60.

GEORGE WILLS

Homeroom President 55-56; Football 55-59.

SANDRA WILSON

Vice-President of Class 56; Homeroom Officer 56-59; FHA 56-57; Science Club 58-60, Treasurer, Secretary; Music Club 59,60, Parliamentarian and Reporter; Girls' Chorus 57-58; Mixed Chorus 59-60, Vice-President; AERIE Staff 59-60; Majorette 57-58, Co-Captain 59; Senior One-Act Play 60; Music Reading Clinic 60; All State Chorus 60; Curtis Magazine Winner 60; Senior Superlative 60; Homecoming Queen 60.

PATRICIA WOOD

4-H Club 58-60.

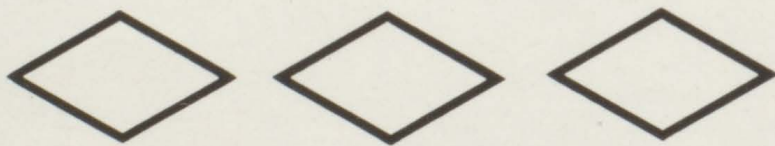
BARBARA ANN WRIGHT

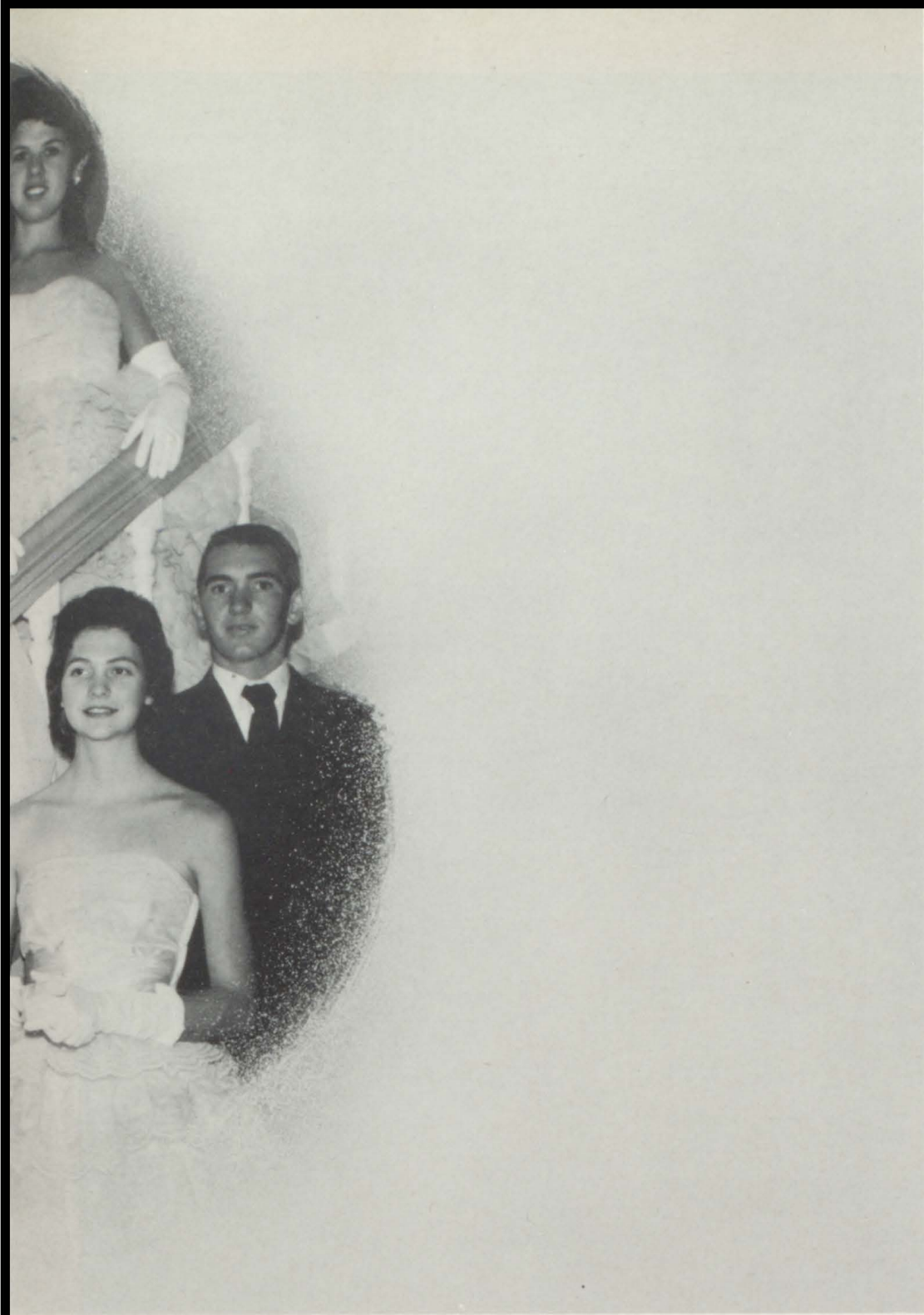
Transferred from Cherokee 57; FHA 57-60; 4-H Club 57-60.

SONNY WRIGHT

FFA 55-60; 4-H Club 55-60; B-Team Football 55-60; Varsity Football 56-60; Baseball 56-60; Track 56-60; Basketball Manager 58-59; Homeroom President 55-56, Secretary 56-57, President 57-58; Class Secretary 56-57; Junior Red Cross 55-60, Vice-President 58-59; AERIE Staff 58-59.







F
E
A
T
U
R
E
S



Best All Around

JEAN TAYLOR and KENNETH SMITH



Most Dependable

SARAH COWART and TOMMY HOSEA





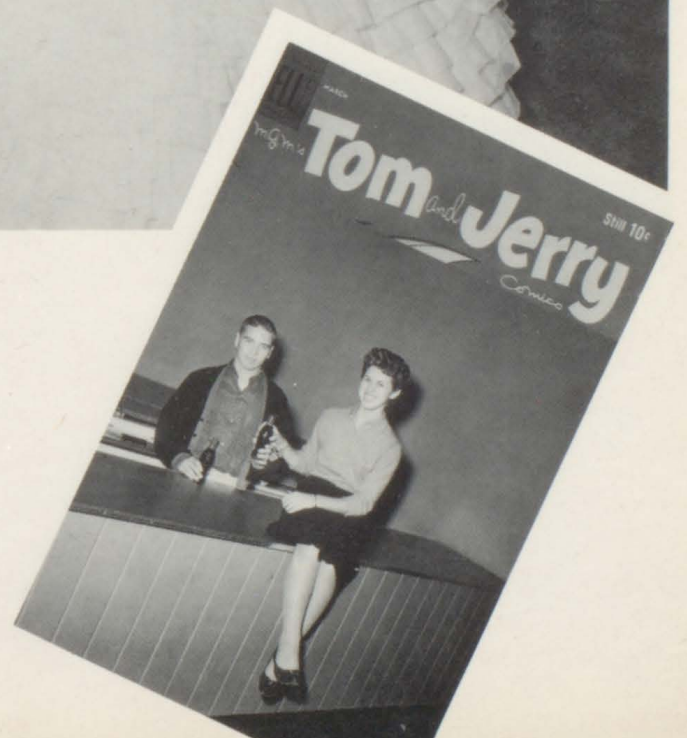
Most Likely To Succeed

ANNE DINSMORE and JACK PEEVY



Most Popular

BRENDA HOOK and RONALD PINKERTON





Friendliest

PEGGY TURNER and DOUGLAS BATES



Cutest

SANDRA WILSON and BENNY REEVES





Most Athletic

ELLEN JOHNSON and BOB BURGESS



Wittiest

KATY NEWTON and JAMES PHILLIPS





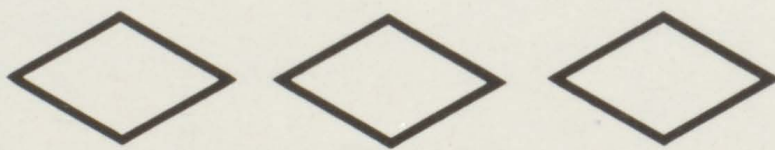


MISS SANDRA WILSON, because of her outstanding beauty, her friendliness, and her wonderful sense of humor, was chosen by the Varsity Football Team to reign as the 1959-60 Milton Homecoming Queen.

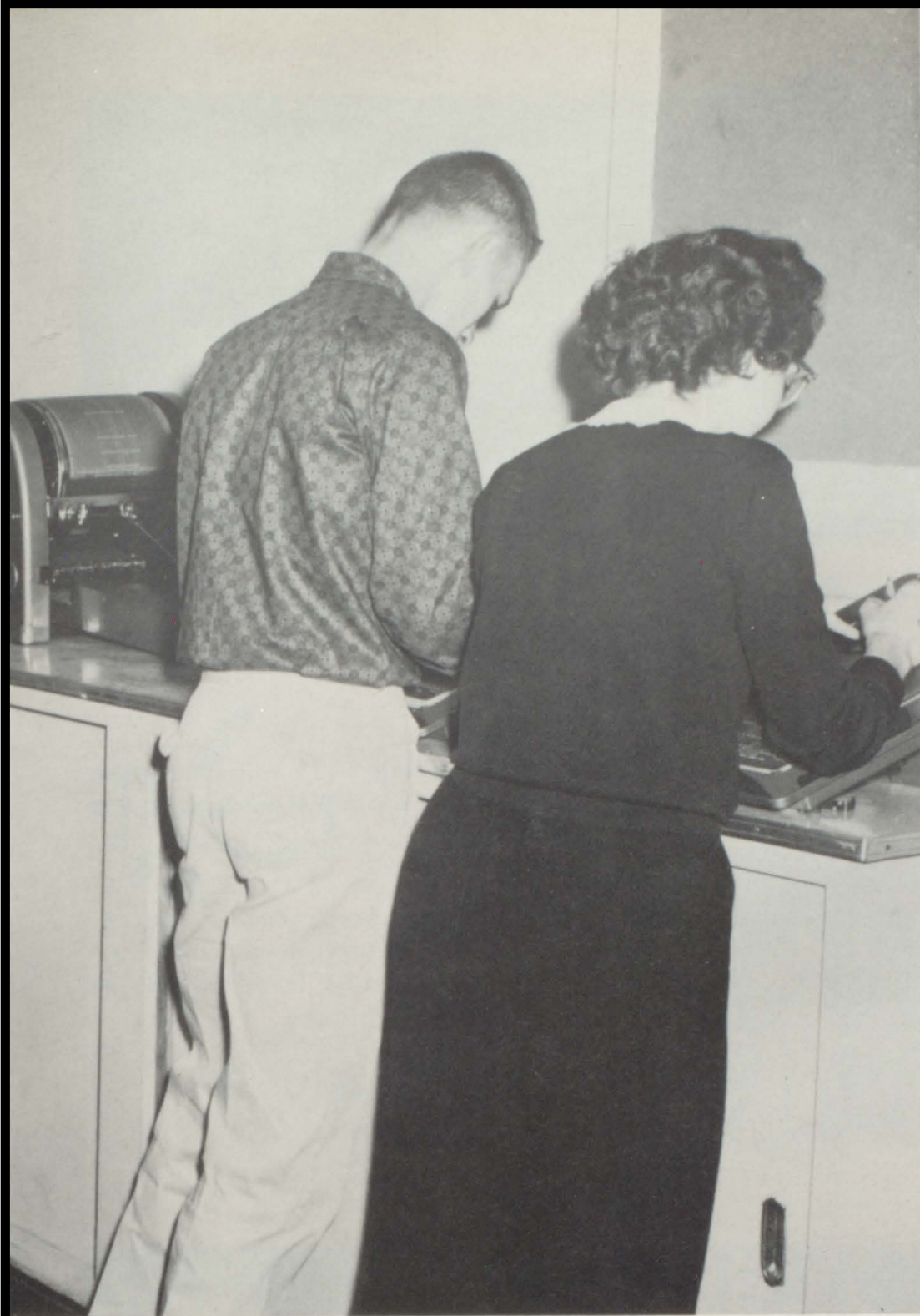
She also was elected by the Seniors to be the "Cutest" girl of the graduating class. She has been an active member of many of Milton's various clubs and activities.

Her Court included Bonnie Flynn, escorted by "Sonny" Wright; Ellen Johnson escorted by Silvy Kirby; Ann Powell, escorted by "Pinky" Pinkerton; and Jean Taylor, escorted by Tommy Hosea. The Queen was escorted by Foster Cagle, Captain of the Football Team.





A
C
T
I
V
I
T
I
E
S





MISS CATHERINE WOOD, MR. CLAYTON HAWKINS,
SPONSORS



SARAH COWART, JEAN TAYLOR,
CO-EDITORS

Work began on the *AERIE* early in September with the Ad Staff rushing around selling ads, and the Circulation Staff selling subscriptions.

Members of the Staff attended an ASPA meeting where they received instructions on raising money, new schemes, and layouts.

As the year passed on, time began to catch up

with us while we were busy typing, laying out pages, collecting bills, and proofreading. The Editors and Sponsors were kept busy working toward the deadlines.

Despite losing pictures, going in debt, and performing every known task, we are glad to give you a written reminder of the 1959-60 school days

---the *AERIE*.



ARTISTS - Jerry Gresham, Kenneth Smith.
PHOTOGRAPHER - Pete Griffin.



AD STAFF - Wayne Jones, Doug Bates, Linda Tucker,
Business Manager; Jane Mauldin, Larry Spruill, Hilda
Henderson, Jimmy Phillips, Nan Harman.



CLASSES - Barbara Northcutt, Pat Boling, *Editor*; Linda Tidwell, Judy Strickland, Anne Dinsmore.



ACTIVITIES - Silvy Kirby, Katy Newton, Pat Wallace, *Editor*; Peggy Turner, Bonnie Flynn, Bobby Coleman.



SPORTS - Ronald Pinkerton, Tommy Hosea, *Editor*; Georgia Russell, Linda Joyner, Bobby Allen, Bob Burgess.



CIRCULATION - Ellen Burriss, Larry Garmon, Betty Green, Pearl Burnett, Dale Williams, Marjorie Pruitt, *Editor*.



FEATURES - Brenda Hook, Ann Powell, Brenda Abercrombie, *Editor*; Brenda Mosteller, Rita Fowler, Sandra Wilson.



F.T.A.



The purpose of the FTA is to introduce a better understanding of the teaching field to all students who wish to become teachers.

Sponsor.....MISS ALICE BURTON
 President..... JANE MAULDIN
 Vice-President.....BETTY GREEN
 Secretary.....BARBARA SUE WOOD
 Treasurer.....PAT TARPLEY

LIBRARY CLUB



The LIBRARY CLUB is an organization of students who desire to work together to make the Library a more attractive and useful place.

The Staff's main objectives are to improve the Library and to help other students. It provides valuable experience for students and renders a valuable service to the school.



Sponsor.....MISS VIRGINIA WILSON
 President.....LARRY GARMON
 Vice-President.....NORMAN GRANT
 Secretary.....JOE TURNER
 Treasurer.....BOBBY ALLEN
 Library Assistant.....MRS. FAYE GRIMES

STUDENT COUNCIL



The STUDENT COUNCIL purposes are: To promote better school spirit, create a greater sense of responsibility and cooperation among the students, and to establish student government.



Co-Presidents.....HILDA HENDERSON, KENNETH SMITH
 Secretary..... KATY NEWTON
 Sponsor..... MRS. GWEN SHUFELT

BETA CLUB



The NATIONAL BETA CLUB is the only active honorary organization on the Milton campus. It has as its main purposes to help teachers and students achieve the end and aim of all true education -- mental enlargement and character development -- and to encourage and reward creditable achievement.

President..... JEAN TAYLOR
 Vice-President.....SHIELDS STUTTS
 Secretary.....SARAH COWART
 Treasurer.....GEORGIA RUSSELL
 Sponsor.....MISS BETTIE McLEMORE



MIXED
CHORUS

President..... BOB BURGESS
 Vice-President..... SANDRA WILSON
 Secretary-Treasurer..... LAMAR RAINWATER

GLEE



CLUBS



GIRLS
CHORUS

President..... GAYNELLE TREADAWAY
 Vice-President..... ELLEN JOHNSON
 Secretary-Treasurer..... ANN CARRUTH

JR. RED CROSS



The members of the JUNIOR RED CROSS, a service organization, donate their time for the benefit of others. Fruit baskets at Thanksgiving, gift boxes and a talent show given at the Veterans Hospital are among the activities of the Milton chapter.

President.....DALE WILLIAMS
 Vice-President.....ANNE DINSMORE
 Secretary.....ROY FIELDS
 Treasurer.....BARBARA NORTHCUTT
 Sponsor.....MRS. FANNIE HARMAN

MUSIC CLUB



The MILTON MUSIC CLUB was organized in 1930 by Mrs. C. E. Maddox.

The purpose of the club is to study the lives and compositions of the great composers and to raise the standard of music appreciation in our school and community. The club's motto is "Music is the universal language of mankind".

President.....KATY NEWTON
 Vice-President.....HILDA HENDERSON
 Second Vice-President.....BRENDA ABERCROMBIE
 Secretary.....PAT WALLACE
 Reporters.....BRENDA HOOK, SANDRA WILSON
 Critic.....LAMAR RAINWATER
 Sponsor.....MRS. BLANCHE MADDOX



Editor.....JACK PEEVY
 Sponsor.....MRS. LOIS WILSON
 Assistant Editor.....ANNE DINSMORE

Willora Guthrie, Brenda Abercrombie, Brenda Hook,
 Rita Fowler.

SCHOOL



ECHOES

The SCHOOL ECHOES appears twelve times a year on the MHS campus and interests students with its variety of sports, news, and human interest events.

The Staff consists of selected members of the Senior Class who take a course in Journalism.



Katy Newton, Nan Harman, Tommy Hosea.

Jean Taylor, Sarah Cowart, Kenneth Smith.

QUILL and SCROLL



The QUILL and SCROLL is the International Society for High School Journalist, and is an honorary society for all Juniors and Seniors in the upper one-third of the class, who have done some outstanding work in the field of Journalism.



Anne Dinsmore, Kenneth Smith, Larry Garmon, Marjorie Pruitt, Brenda Mosteller, Jack Peevy, Rita Fowler, Brenda Abercrombie, Willora Guthrie, Jean Taylor, Larry Spruill, Linda Tucker, Mrs. Lois Wilson, and Sarah Cowart.



SCIENCE CLUB



The main purposes of the SCIENCE CLUB are to promote a general interest in the Sciences and to follow new developments in this field.

Mrs. Shufelt, Sponsor; Ronald Pinkerton, Vice-President; Sandra Wilson, Secretary; Patricia Wallace, Treasurer; Bob Burgess, President.



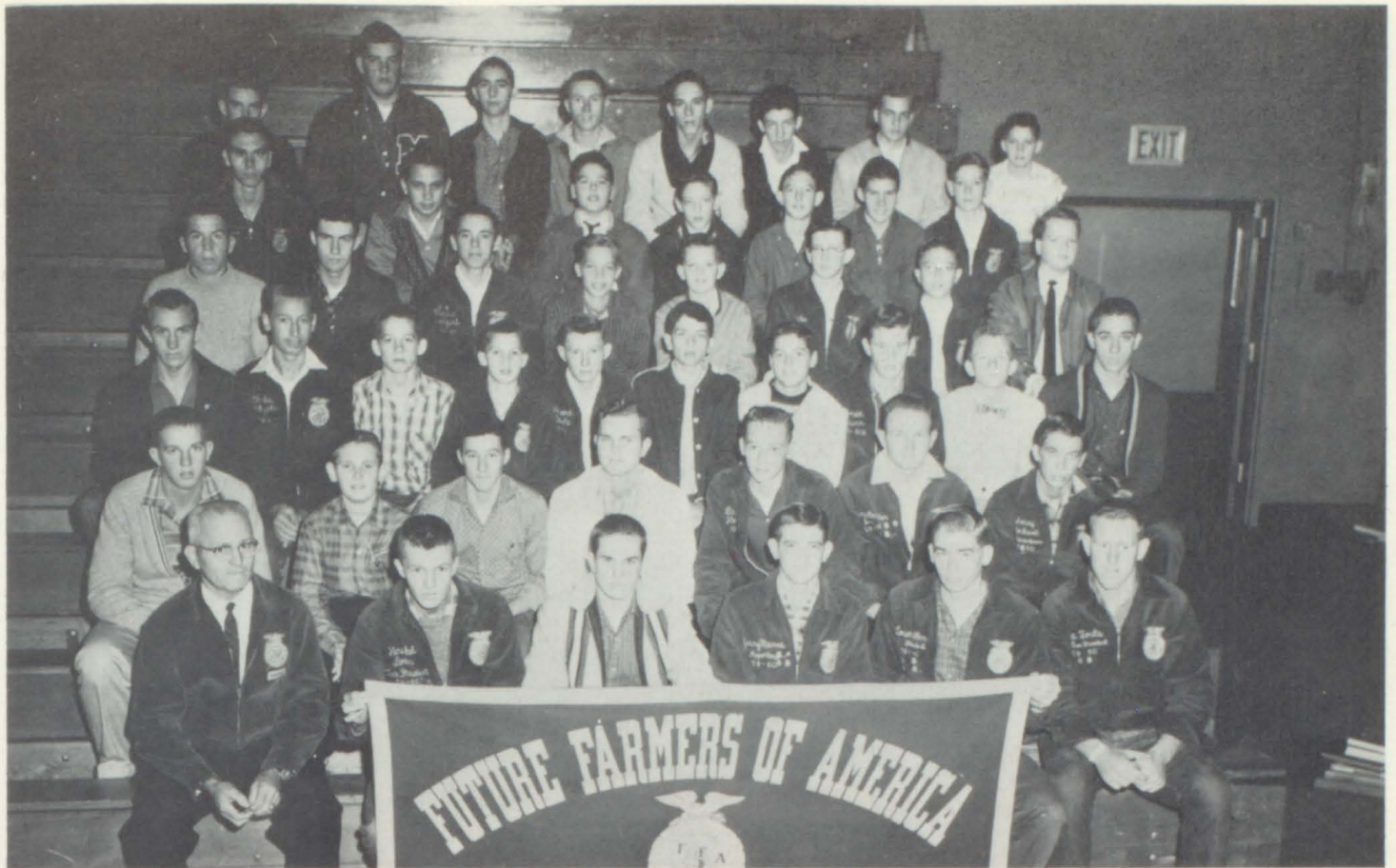
President.....LINDA TUCKER
 Vice-President.....LUCRETIA THACKER
 Secretary.....ETHEL LOCKE
 Treasurer.....ANN CARRUTH
 Sponsor.....MRS. DICKERSON



F.H.A.

The purposes of the FUTURE HOMEMAKERS of AMERICA are to encourage democracy in home and community life, to give appreciation to homemaking, and to further interest in Home Economics.





Sponsor..... MR. P. L. ELKINS
 President..... LAMAR ALLEN
 Vice-President..... HERSCHEL LONER
 Secretary..... LARRY CASTLEBERRY
 Treasurer..... MARVIN FOUTS
 Reporter..... JERRY MANUS

F.F.A.



The aim and object of the FUTURE FARMERS of AMERICA organization is to help a farm boy help himself. Through participating in the activities carried on by the local, state, and national organization it is expected that a member will learn more about farming, develop his own capacities, cultivate an interest in his community, and get a more complete understanding of those national problems which involve the business of farming.





BAND



The BAND and MAJORETTES have been performing for Milton for the past few years. They have presented many colorful and thrilling half-time shows throughout the year. Under the direction of Mrs. Hesketh, and leadership of Brenda Hook, Captain of the Majorettes, they presented a very inspiring spectacle for the Homecoming Queen and visiting alumni at the annual Homecoming Game.





MAJORETTES



BRENDA HOOK
Captain



BRENDA ABERCROMBIE
Co-Captain



PEGGY TURNER



RITA FOWLER



*President.....*PAT BOLING
*Vice-President.....*LINDA ANDERSON
*Secretary-Treasurer.....*DIANNE HOLBROOK

4-H CLUBS

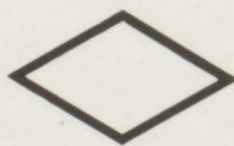
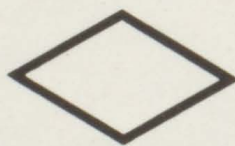
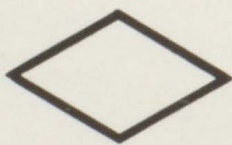
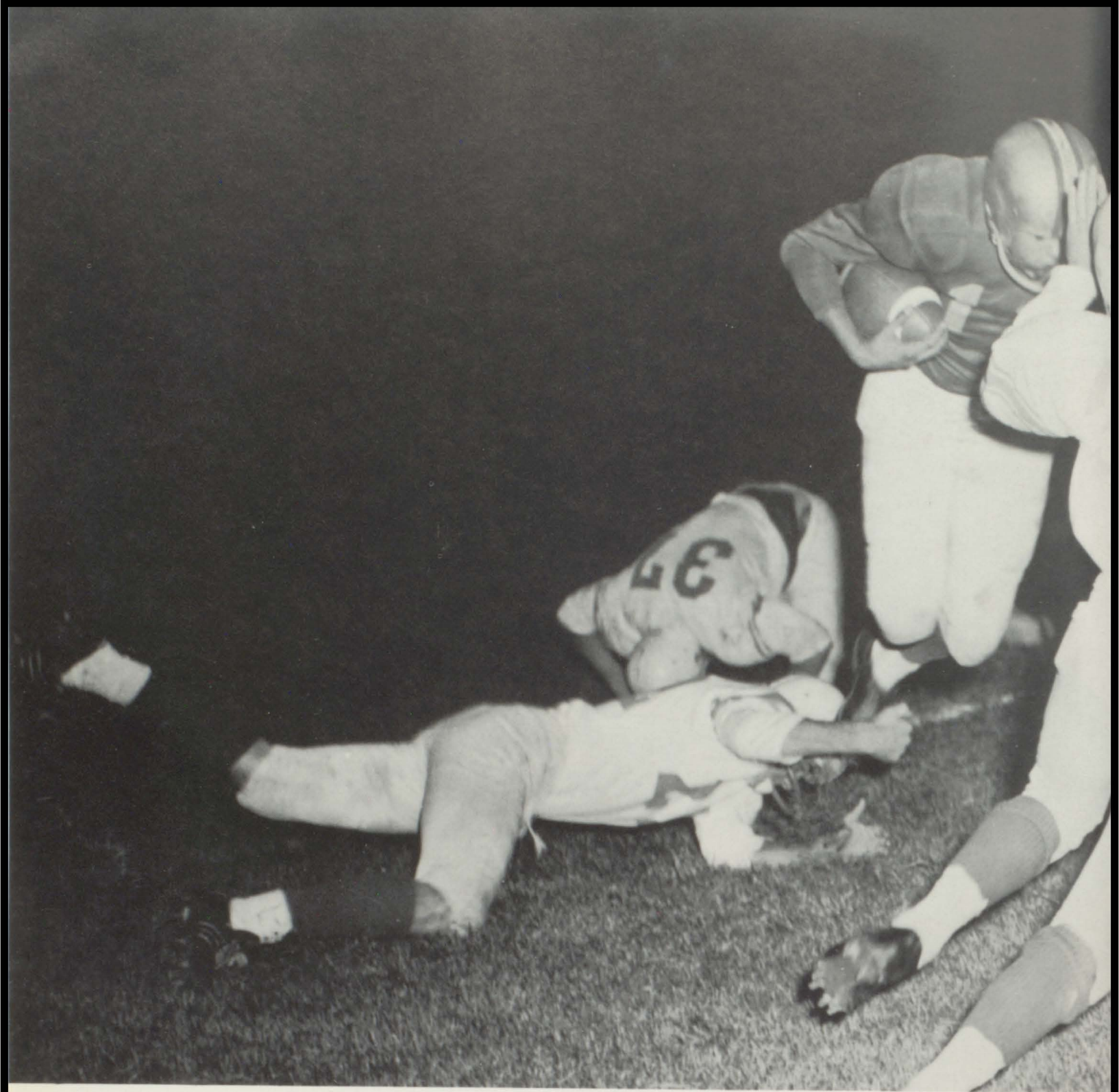


President..... PHILLIP STOVER
Vice-President..... SONNY WRIGHT
*Secretary.....*LARRY MATTHEWS



FAMILIAR SCENES







S
P
O
R
T
S



Beverly Abercrombie, Joan Williams, Judy McFarlin, Dianne Holbrook, Brenda Mosteller, Marjorie Pruitt, Virginia Porter, Brenda Phillips.



VIRGINIA PORTER



BEVERLY ABERCROMBIE



BRENDA PHILLIPS



JOAN WILLIAMS



BRENDA MOSTELLER
Captain

MARJORIE PRUITT
Co-Captain



CHEERLEADERS

The CHEERLEADERS support all of Milton's Teams when losing or winning. They try to promote better school spirit by sponsoring pep rallies. The Cheerleaders are always ready to stand for our school and its sports. All girls from the ninth to the twelfth grades are eligible for try-outs.



MISS ELEANOR PARADISE
Sponsor



JUDY McFARLIN

DIANNE HOLBROOK





MR. BRAD SANDERSON
Girls' Basketball
B-Team Football

C
O
A
C
H
E
S



MR. RALPH WILSON
Varsity Football
Baseball



MR. GUS LETCHAS
Track
Varsity Football



MR. CARROLL BEAVERS
Boys' Basketball
Football



MR. CLAYTON HAWKINS
B-Team Football
Eighth Grade Girls' Basketball



Left to Right; First Row: Phillips, Grant, Letchas, Wright, Ball, Kirby, Shirley, Cagle. Second Row: Walker, Spruell, Turner, Stutts, Jones, Pinkerton, Pruitt, Moore, Coleman. Third Row: Allen, Elliott, Samples, Cochran, Sims, Lindsey, Fouts, Hosea.

VARSITY FOOTBALL



FOSTER CAGLE
Captain - Guard



GARY HELTON, ROBERT HAYES
Managers



TOMMY HOSEA — *Guard*



SONNY WRIGHT — *Halfback*



RONALD PINKERTON — *Center*

On August 16, 1959, thirty-five Milton High football prospects met with Coach Letchas and his Staff and began practicing for the tough ten-game 1959 schedule.

Thirty-four practices later on September 4, Milton opened the season against a very fine Tucker team. Tucker came out on top of a great defensive battle with the score 13-7.

The following Friday the fleet-footed Sandy Springs' backs proved too much for the Eagles as Milton fell 20-7.

In the first regional game, the 1958 regional champions, Forest Park, barely slipped by Milton with the score of 12-0.

On September 25, the Milton Eagles won their first game by defeating the Roswell Hornets 19-7.

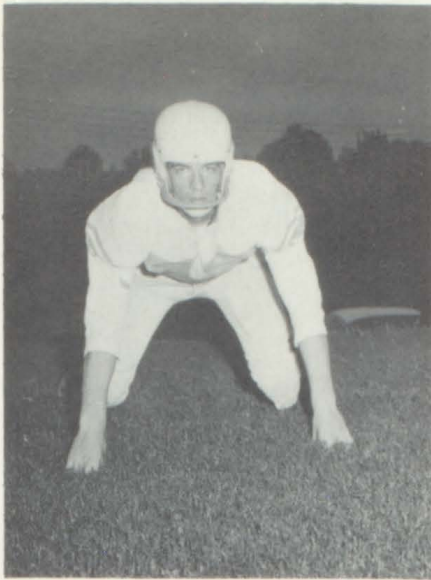
*Best of luck
Cagle*



JAMES PHILLIPS — *Guard*



SILVY KIRBY — *Halfback*



JIMMY SAMPLES — *Tackle*



EDWARD SIMS — *Guard*

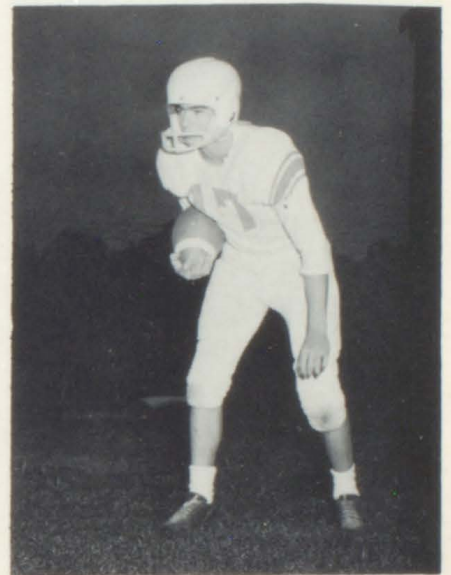
A week later on October 2, the Eagles met the powerful Carrollton Trojans. The Trojans could do no wrong as they handed the Eagles their worst defeat of the season, 27-6.

October 16, was a gloomy night for the Eagles as they were upset by a much weaker North Clayton team 13-7.

On October 23, the Eagles came out on top of a rock "em," sock "em," battle with Troup County. The Eagles won 6-0.

In the mud and rain on October 30, Milton fell to R. L. Osborne 14-12.

On November 6, in the final game and annual homecoming game, the Eagles displayed the most determined defensive effort of the season in battling the highly-rated Jonesboro team to a 7-7 tie.



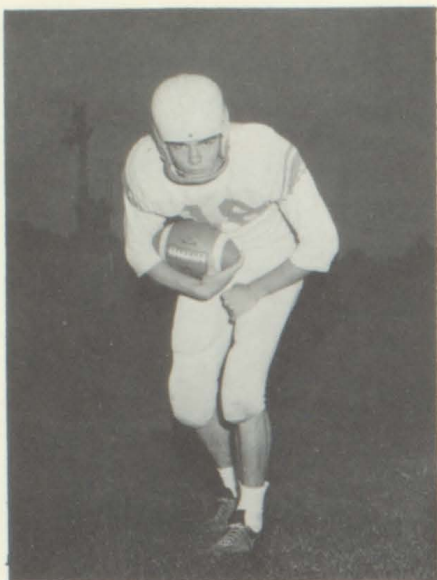
ARTHUR LETCHAS — *Halfback*



MELVIN COCHRAN — *Tackle*



JERRY PRUITT — *Halfback*



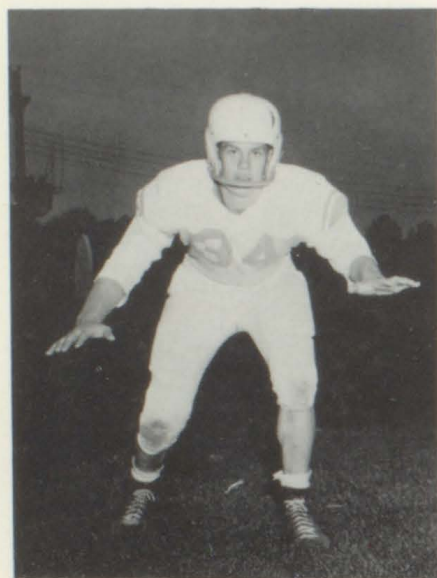
GORDON SHIRLEY — *End*



NORMAN GRANT — *Halfback*



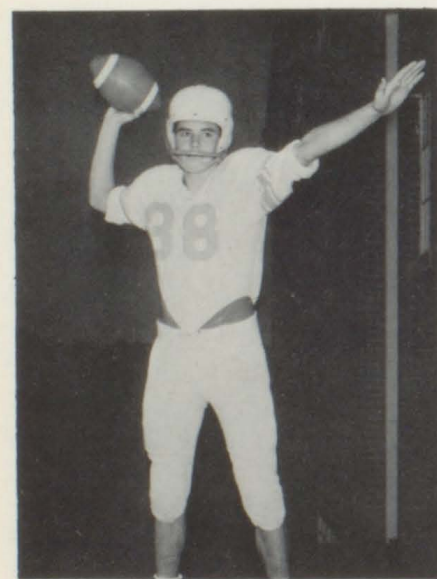
LOUIE FOUTS — *Guard*



FRED BALL — *Fullback*



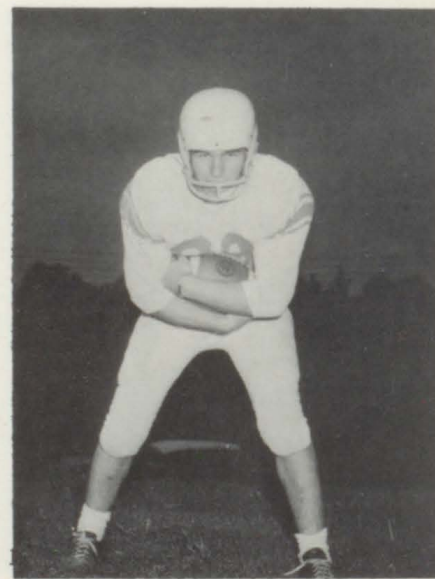
Cochran, Cagle, and Lindsey swarm ball-carrier.



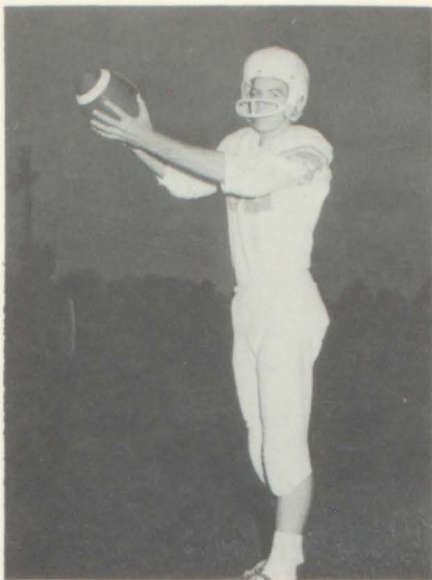
SHIELDS STUTTS — *Quarterback*



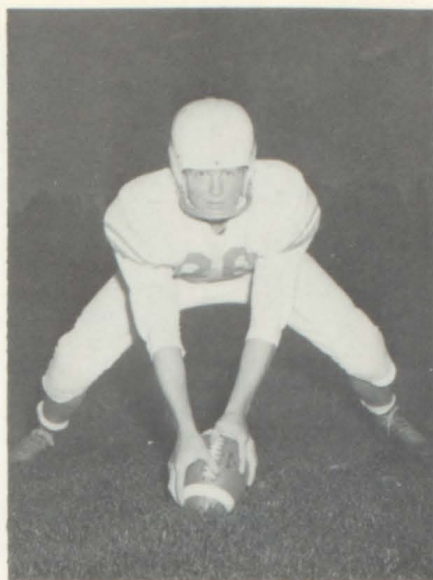
PHILLIP LINDSEY — *Halfback*



BOBBY COLEMAN — *Fullback*



BILLY MOORE — *End*



JOE TURNER — *Center*



BUTCH ELLIOTT — *End*



Halfback Sonny Wright moves for yardage.



WAYNE JONES — *Tackle*



JIMMY WALKER — *End*



JIMMY SPRUELL — *Tackle*



BOBBY ALLEN — *Tackle*



JANICE WATERS
Guard

JUDY SUTTON
Forward



ELLEN BURRISS
Forward



SARAH PRESSLEY
Guard

BRENDA SIMS
Forward



Johnson throws from free line.



Sims fires despite double defense.



MARY JO BISHOP
Guard

JUDY SHULER
Forward



SANDRA HENDERSON
Manager



LINDA SMITH
Forward

LINDA JOYNER
Guard



Sims racks up two points

The Varsity Girls, under the coaching of Mr. Brad Sanderson, made a muchly-improved showing over the teams in years past, winning about 40 per cent of their games.

The Seniors playing for the last time were: Captain Ann Carruth, Ellen Johnson, Peggy Turner, and Ethel Locke.



ANN CARRUTH — Captain, Forward

B
A
S
K
E
T
B
A
L
L

G
I
R
L
S'



Left to Right: Smith, Pressley, Turner, Sims, Sutton, Joyner, Carruth, Johnson, Burriss, Waters, Shuler, and Bishop.



PEGGY TURNER — Guard



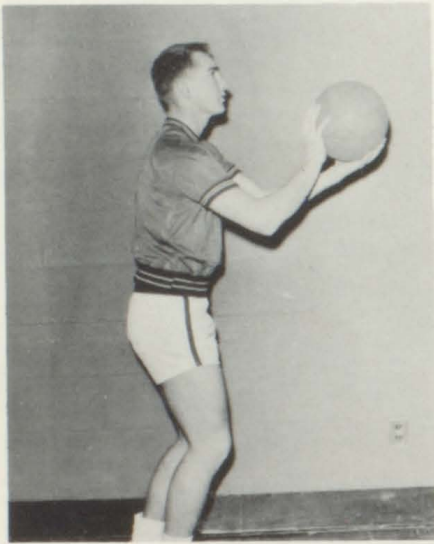
ETHEL LOCKE — Guard



ELLEN JOHNSON — Forward



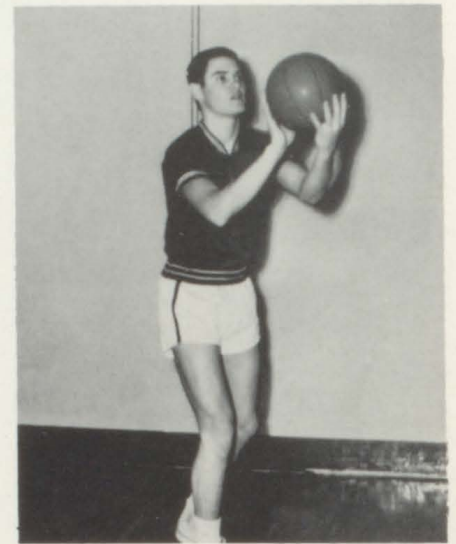
Left to Right: Danqar, Martin, Burgess, Letchas, Fouts, Cagle. Second Row: Pirkle, Stutts, DeVore, Cochran, Richards.



BOB BURGESS — *Captain, Guard*

B
O
Y
S'

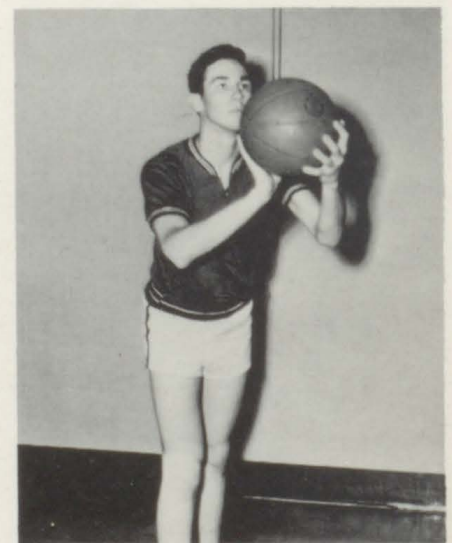
B
A
S
K
E
T
B
A
L
L



SHIELDS STUTTS — *Forward*



Richards making jump shot over Duluth defender.



ALBERT PIRKLE — *Forward*



Stutts breaks through defense barrier for goal.

Coach Beavers faced making a basketball team this year with only two lettermen returning from last year's regional championship team. He had available height in Melvin (Peanut) Cochran, and Albert Pirkle. A talent for jumping was displayed by Rex Richards. Shields Stutts was a sheer shooter. The Guards, Bob Burgess and Jim Martin, were good drivers. With this material and a lot of effort this year's team can be classified as equal to any other Milton team.

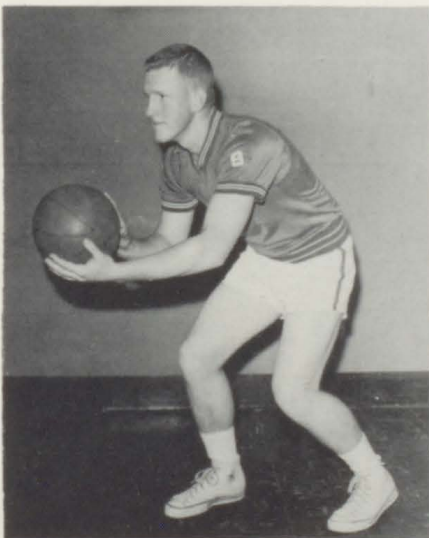
With the idea that all organizations must have a good leader, the team chose Bob Burgess, a three year letterman and the only Senior on the team, as their Captain.



JIM MARTIN — Guard



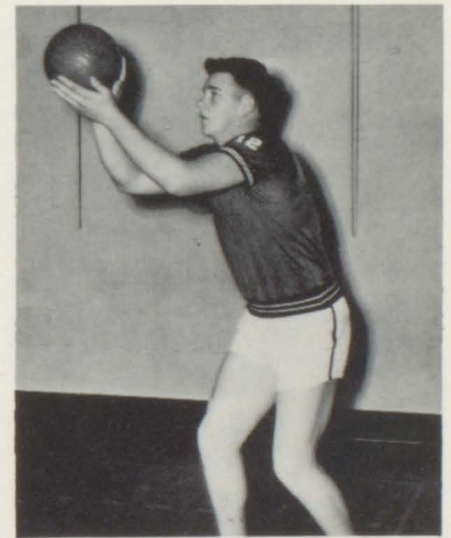
REX RICHARDS — Center



LOUIE FOUTS — Guard



ARTHUR LETCHAS — Guard



MELVIN COCHRAN — Center



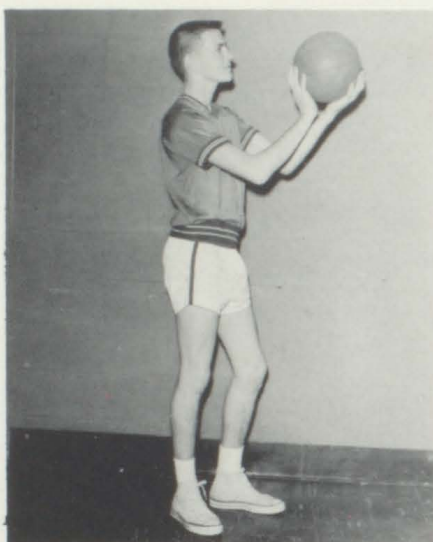
Captain Burgess, Richards, Stutts scramble for ball.



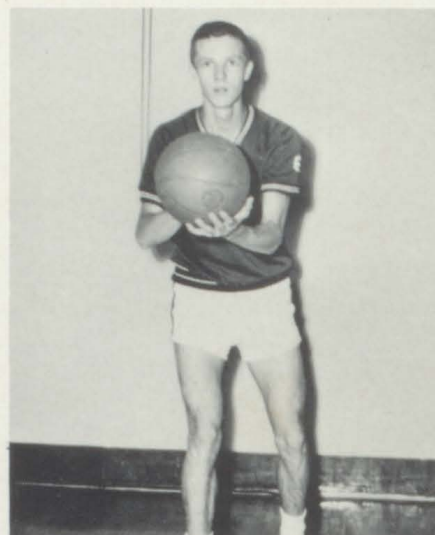
FOSTER CAGLE — *Guard*



LINTON DANGAR — *Forward*



JOHNNY DeVORE — *Forward*



HERSCHEL LONER — *Guard*

SCORE BOARD

MILTON

OPPONENT

| | | |
|---------|----------------------|----|
| 40..... | WEST GWINNETT..... | 23 |
| 48..... | TUCKER..... | 38 |
| 39..... | CLARKSTON..... | 42 |
| 42..... | SANDY SPRINGS..... | 54 |
| 32..... | FORSYTH COUNTY..... | 55 |
| 44..... | ROSWELL..... | 47 |
| 36..... | TUCKER..... | 35 |
| 59..... | DULUTH..... | 54 |
| 52..... | R. L. OSBORNE..... | 57 |
| 51..... | FORSYTH COUNTY..... | 40 |
| 38..... | CHEROKEE COUNTY..... | 53 |
| 41..... | ROSWELL..... | 50 |
| 47..... | R. L. OSBORNE..... | 63 |
| 44..... | WEST GWINNETT..... | 27 |
| 41..... | CHEROKEE..... | 59 |
| 47..... | DULUTH..... | 43 |
| 58..... | CLARKESTON..... | 43 |

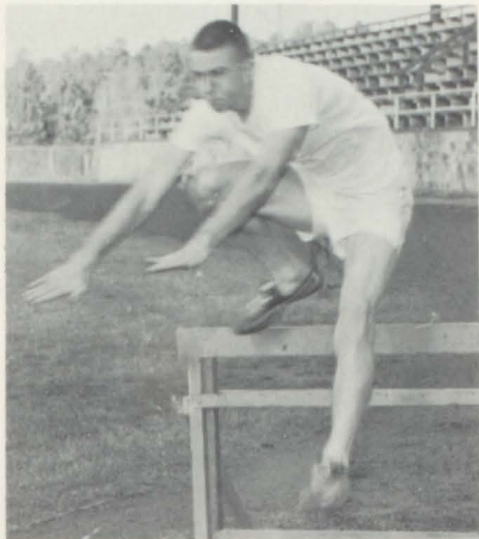


RICHARD PHILLIPS — *Manager*

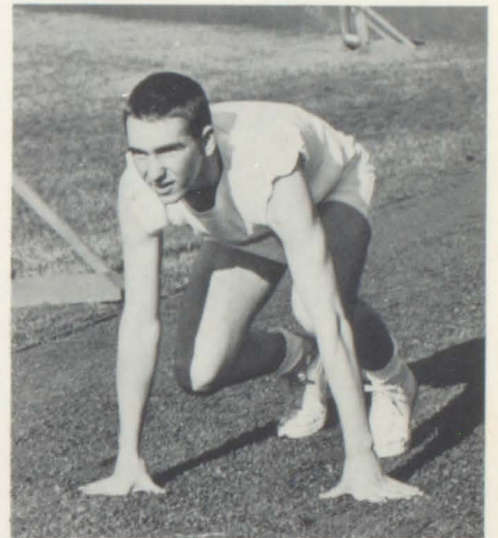


The Milton Track Team began practice on February 29 with high hopes of defending the Region 1-A Championship earned by the 1959 cinder team. The Team, with six lettermen returning, will be hard to beat.

Left to Right: Allen, DeVore, Lyons, Grant, Letchas, Burgess.
 Second Row: Ball, Shirley, Pruitt, Hosea, Cagle. Third Row:
 Stutts, Moore, Lindsey, Elliott, Cochran, Sims.

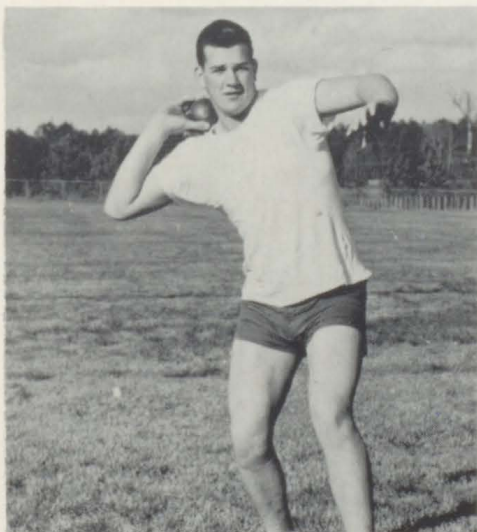


BILLY MOORE



BOB BURGESS

T
R
A
C
K



MELVIN COCHRAN



PHIL LINDSEY

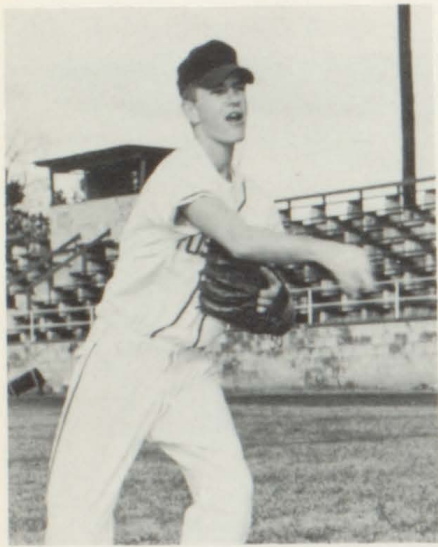


LOUIE FOUTS — *Catcher, Outfielder*

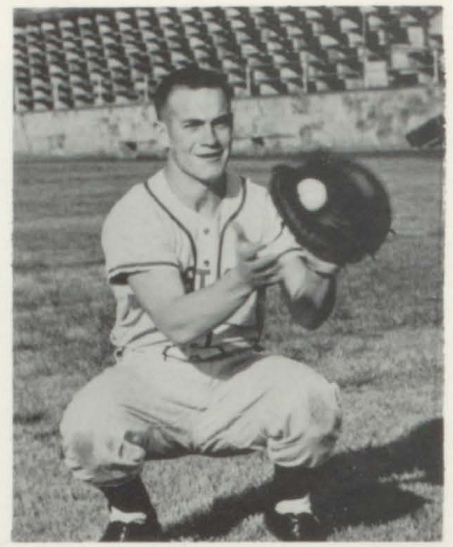


PHILLIP STOVER — *Infielder*

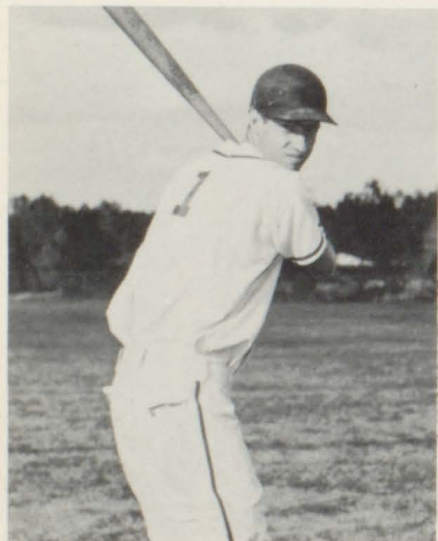
B
A
S
E
B
A
L
L



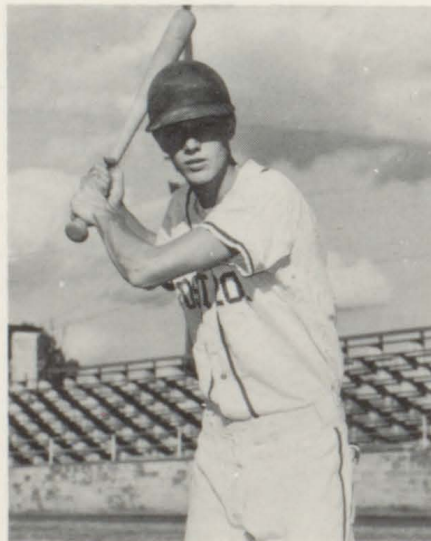
JOHNNY DeVORE
Pitcher, First Baseman



HOWARD RUCKER — *Catcher*



WILLIAM PADGETT — *Outfielder*



HERSCHEL LONER — *Infielder*



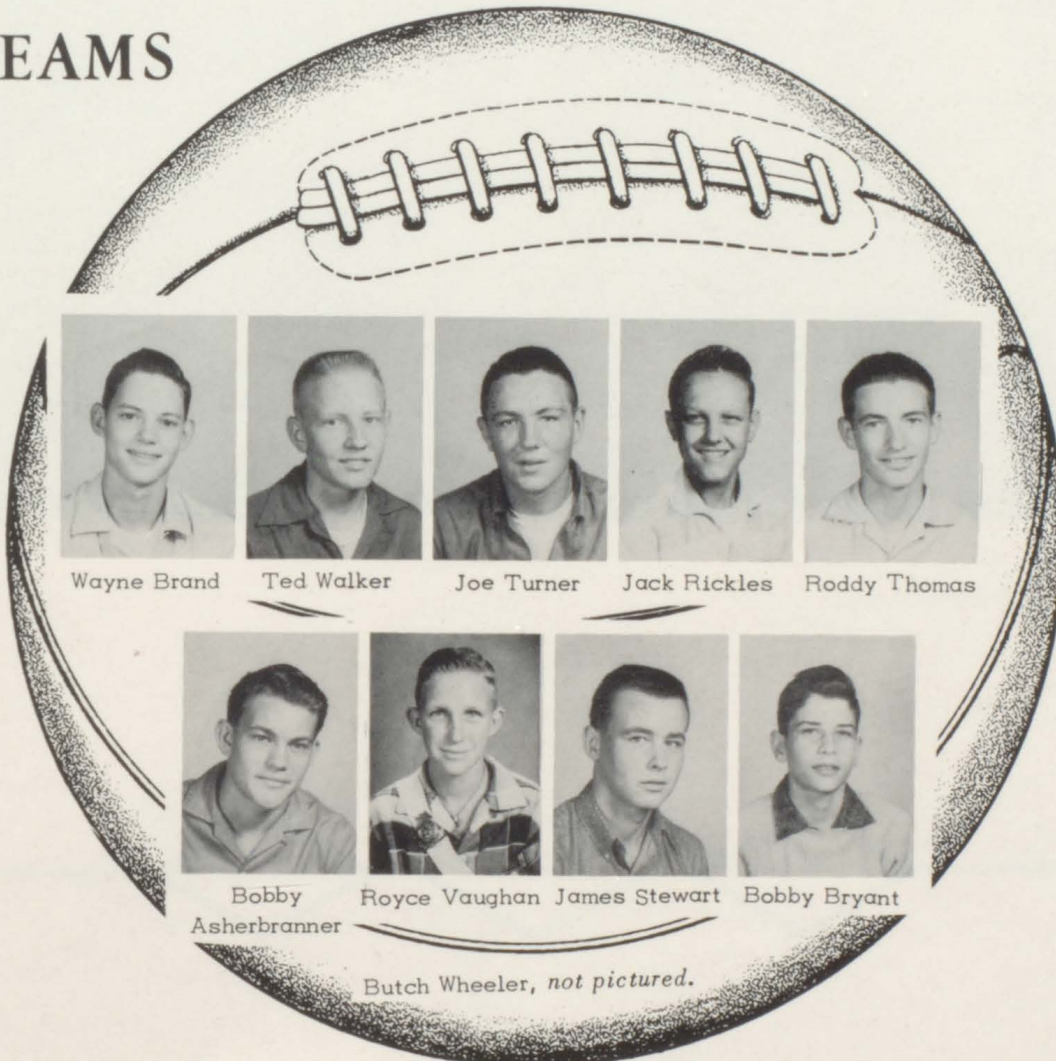
THOMAS SHIRLEY — *Infielder*



FOOTBALL

Left to Right: First Row: Elliott, Walden, Rainwater, Jones, Hamrick, Ingram, Rainwater. Second Row: Estes, Coleman, Harrison, Carroll, Rickles, Hamrick, Matthews. Third Row: Buice, Wheeler, Stewart, Ellis, Powell, Stutts, Pitts, Foster.

B-TEAMS

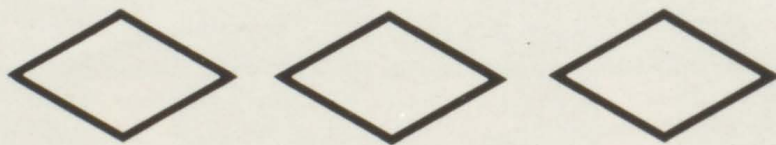


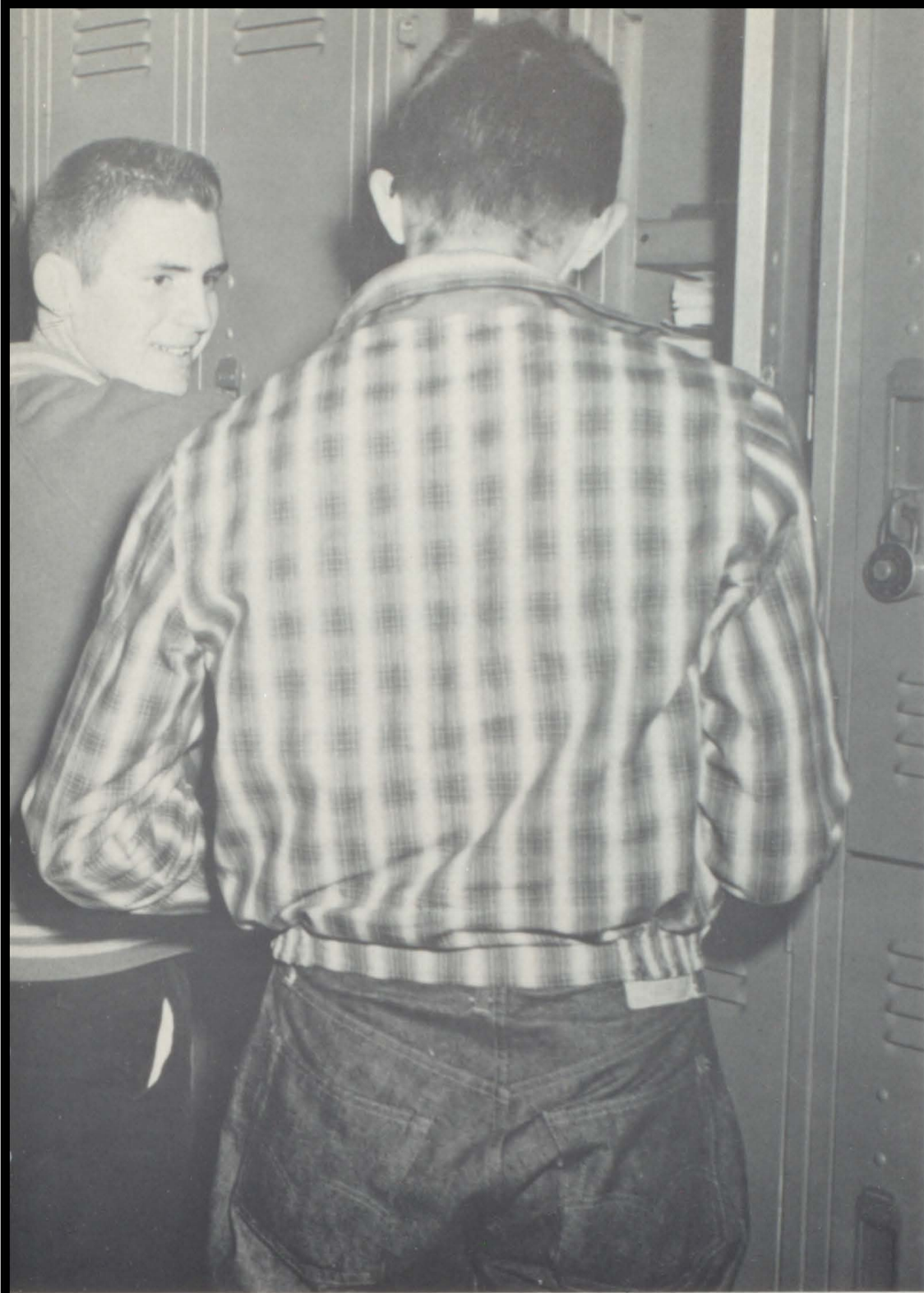
Wayne Brand Ted Walker Joe Turner Jack Rickles Roddy Thomas

Bobby Asherbranner Royce Vaughan James Stewart Bobby Bryant

Butch Wheeler, not pictured.

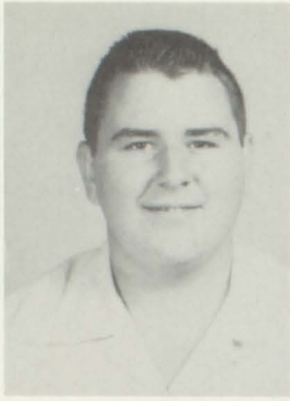
B
A
S
K
E
T
B
A
L
L



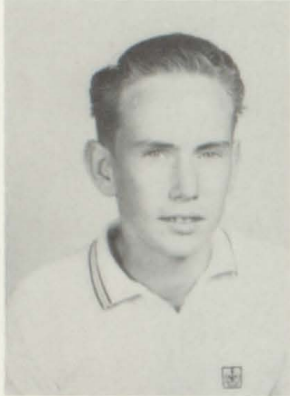


C
L
A
S
S
E
S

JUNIORS



PATRICIA ABERNATHY
BOBBY ALLEN
LAMAR ALLEN



LINDA ANDERSON
JERRY ANDREWS
H. D. BAGLEY



PHYLLIS BAGLEY
FRED BALL
BILLY BUICE



ELLEN BURRISS
BETTY BYERS
GAIL CAMPBELL

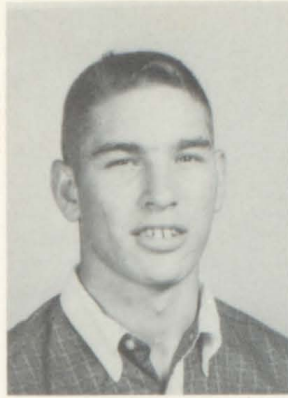


EULA MAE CHATHAM
LOUISE CHRISTOPHER
JACKIE COCHRAN

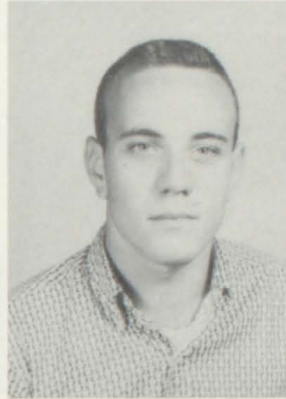
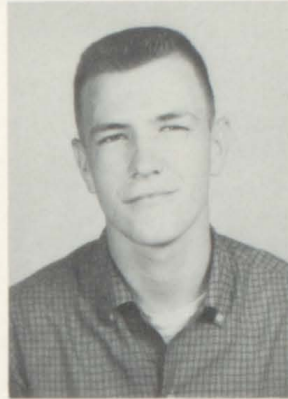
GAIL BURGESS
(not pictured)

JUNIORS

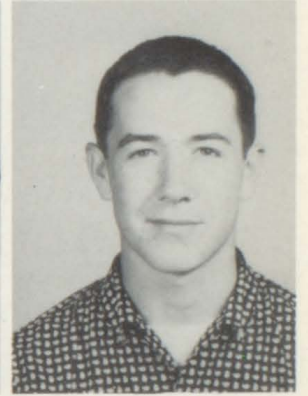
BOBBY COLEMAN
LUCILLE COLLETT
LINTON DANGAR



JOHNNY DeVORE
NEIL DeVORE
LEATRICE DINSMORE



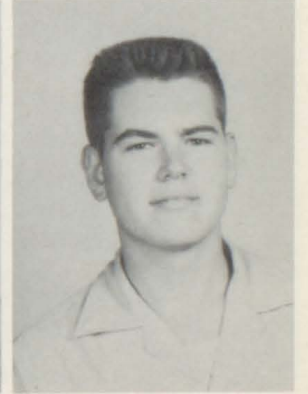
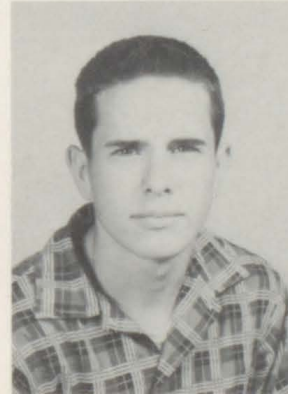
MARIE DOCKERY
ELIZABETH DORSEY
BUTCH ELLIOTT



DOUGLAS ESTES
BOBBY FLYNN
BONNIE FLYNN



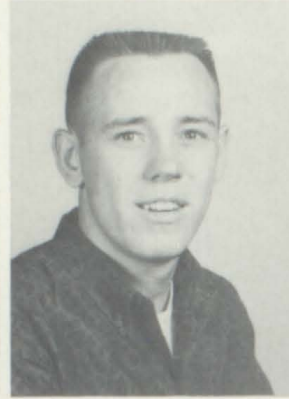
MARVIN FOUTS
ROY GANTT
LARRY GARMON



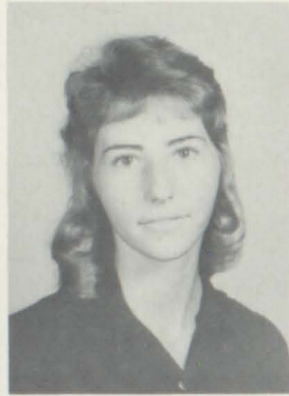
JUNIORS



BETTY GREEN
MARTHA JANE GREEN
JERRY GRESHAM



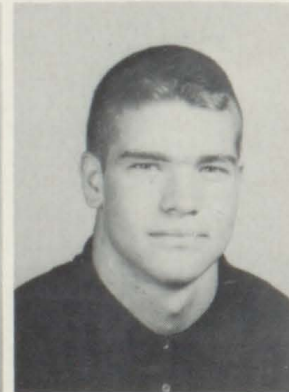
DONALD HAMRICK
ORVIS HANEY
ROBERT HAYES



GARY HELTON
BARBARA HOLCOMBE
VIRGINIA HOLDEN



ROBERT HOOD
WAYNE JONES
LINDA JOYNER



FRANKIE KIRBY
SUE KIRBY
PHILLIP LINDSEY

JUNIORS

BEN MARTIN
LAMAR MARTIN
SHANNON MARTIN



CAROLYN MEDLIN
BILLY MOORE
JUANITA MOSS



WAYNE MOSS
BRENDA MOSTELLER
BARBARA NORTHCUTT



LARRY NUNNALLY
JERRY PHILLIPS
JIMMY PHILLIPS



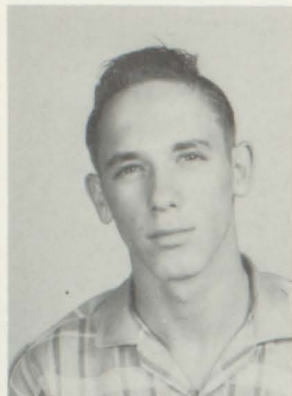
ALBERT PIRKLE
JERRY PONDER
VIRGINIA PORTER



JUNIORS



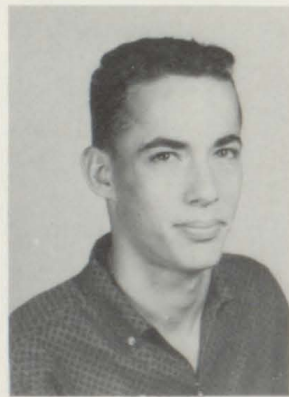
ANN POWELL
SARAH PRESSLEY
JERRY PRUITT



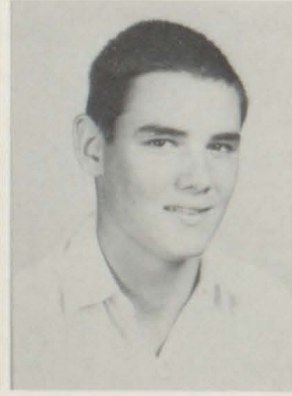
MARJORIE PRUITT
REX RICHARDS
LARRY RUCKER



JIMMY SAMPLES
BUFORD SANDERS
LINDA SMITH



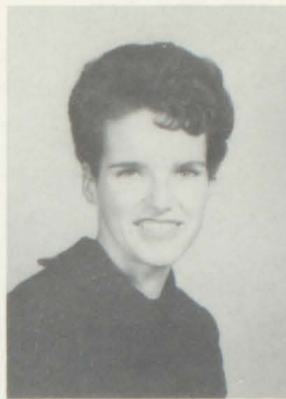
JIMMY SPRUILL
LARRY SPRUILL
PHILLIP STOVER



PHYLLIS STOVER
SHIELDS STUTTS
JOE SUTTON

JUNIORS

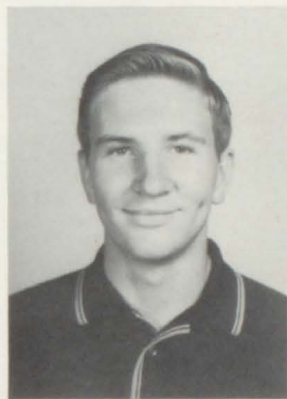
PAT TARPLEY
LUCRETIA THACKER
ELOISE THOMPSON



LINDA TIDWELL
BETTY JO TIMMS
RAY VAUGHAN



BOBBY VINSON
RUNELLE WALLS
LARRY WEBB



BEATRICE WESTBROOKS
GARY WESTBROOKS
DONALD WILSON



BECKY WINFREY
BARBARA SUE WOOD
SARAH YOUNG



Sophomores



BEVERLY ABERCROMBIE
 DIANNE ANDERSON
 PATRICIA ANDERSON



BERTA MAE AVERY
 SCOTTY BARNETT
 HAYDEN BEARDEN

MARK BELL
 PATRICIA BENNETT
 MARY JO BISHOP



BARBARA BLACKWELL
 CECIL BLACKWELL
 WAYNE BRAND



JAMES BROOKS
 MARIE BROOKS
 LARRY BRUMBELOW



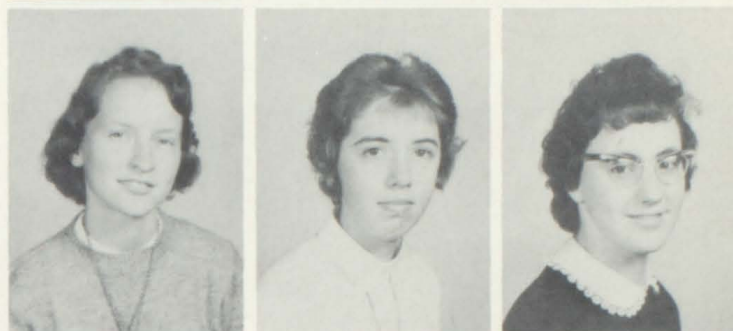
ANNE BURGESS
 MARJORIE BYERS
 FOSTER CAGLE

Sophomores

REBA CARRIGAN
 CECIL CARTER
 LARRY CASTLEBERRY



LINDA CASTLEBERRY
 REGINA CASTLEBERRY
 JOYCE CATES



ANDREA CHATHAM
 BERNIE COALSON
 MELVIN COCHRAN



BYRON COLLETT
 RITA DANGAR
 JESSIE DAVIS

ELIZABETH DAY
 CLARENCE DINSMORE
 DICKIE DINSMORE



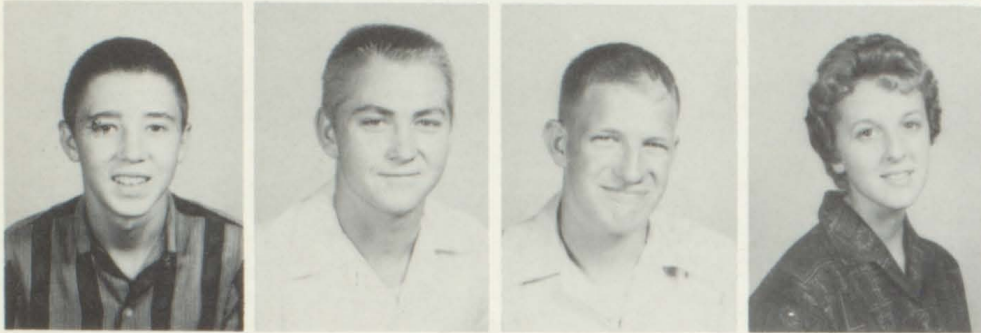
JERRY DOCKERY
 CHARLES ESTES
 SALLY FLECK



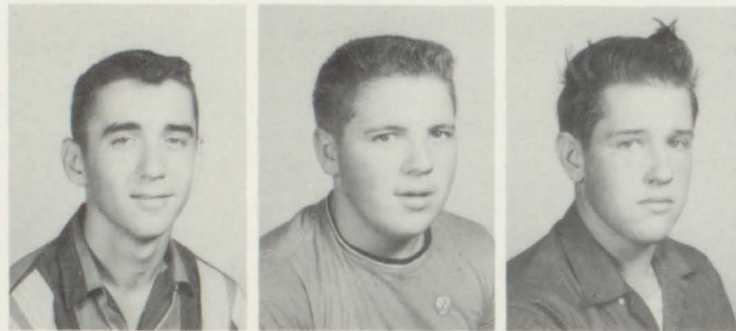
Sophomores



LOUIE FOUTS
MARGIE GARRETT
PATRICIA GAYTON
NORMAN GRANT



JUNIOR GREEN
MARVIN GREEN
PETE GRIFFIN
SUE GRIMES



LARRY HAKES
JACKIE HAMRICK
WALTER HANEY

KIT HANSARD
LARRY HARRISON
LARRY HOLCOMBE
C. M. HONEA



GLORIA HUNNICUTT
CALVIN HUNSUCKER
BRENDA JETT
CAROLYN JONES

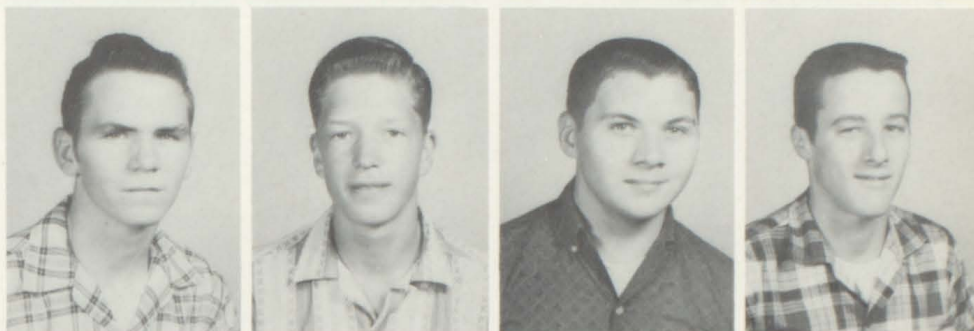


Sophomores

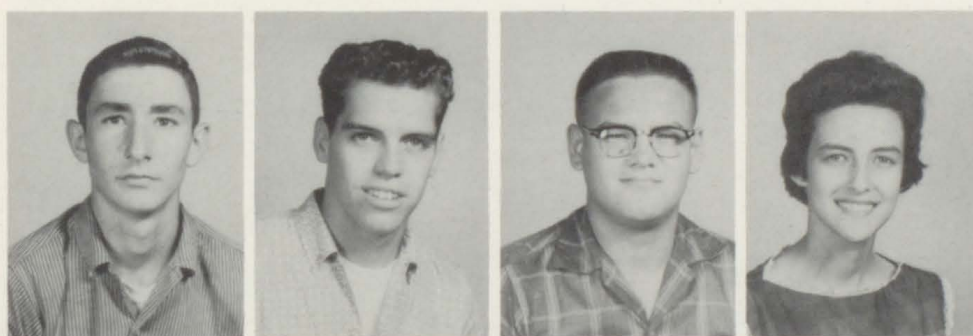
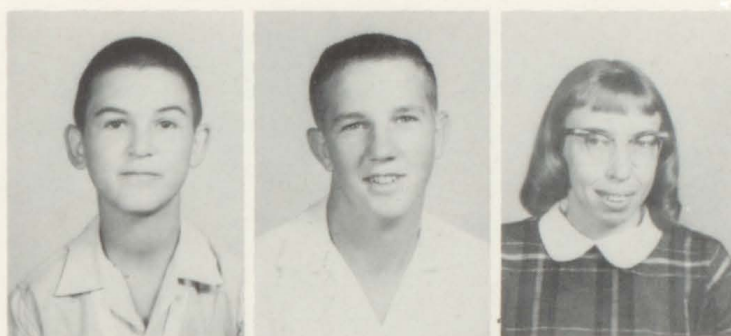
HELEN JONES
 MARTHA ANN KELL
 WENDELL LANCE
 ARTHUR LETCHAS



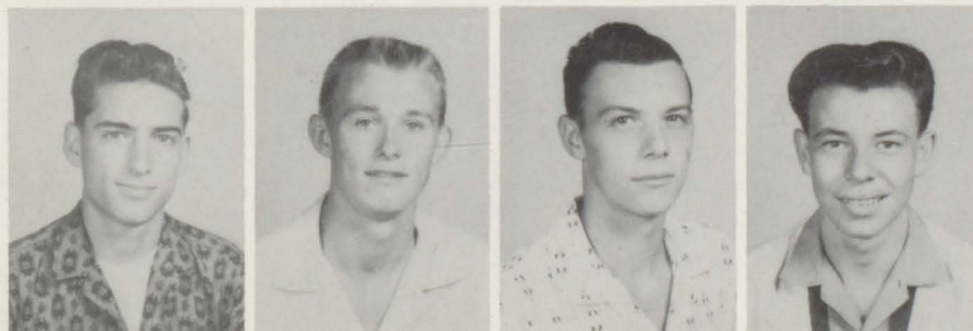
SILAS LYON
 JIM MARTIN
 LAMAR MARTIN
 ROY MARTIN



DONNIE MAULDIN
 PIERCE McCLESKEY
 HILDA MOSES



DALE MULKEY
 DONNIE MYERS
 LARRY ODUM
 BRENDA PHILLIPS



HENRY PHILLIPS
 CLIFFORD PITTS
 BILLY RAY POTEETE
 JACKIE PRESSLEY

Sophomores



GAIL RAINWATER
 JACK RICKLES
 GARY ROBERTS
 SUE SAMPLES



GORDON SHIRLEY
 BRENDA SIMS
 EDWARD SIMS
 SANDRA SMITH



SELINA STEWART
 VANN STUTTS
 ANN SUTTON

DAVID SUTTON
 MARVIN TATUM
 LANIER THACKER
 JUANITA TREADAWAY



JOE TURNER
 JACK TWITTY
 SISSIE VINSON
 TED WALKER



Sophomores

RAY WALLACE
LINDA WATERS
DIANNE WESTBROOK
BUTCH WHEELER



JOYCE WHITE
DAVID WILSON
MORRIS WILLIAMS
BILL WOMACK



CHARLENE WRIGHT
LARRY WRIGHT



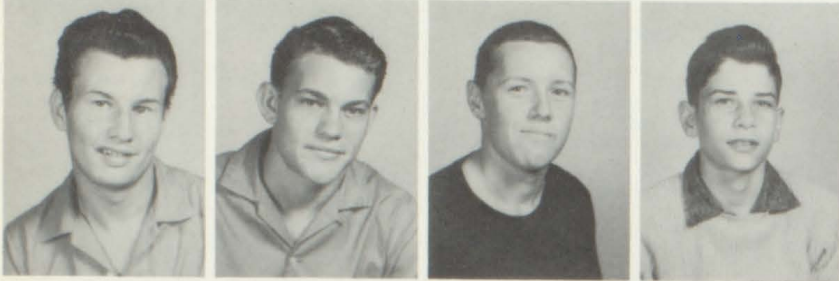
How these people do scatter after these pep rallies!



Freshmen



RONNY ABERCROMBIE
STEVEN ABERNATHY
PRISCILLA ALLISON
KATHLEEN ANGLIN



DORSEY ARMSTRONG
BOBBY ASHERBRANNER
JERRY BLACKWELL
BOBBY BRYANT



RAY BRYANT
RYMON BUICE
ANNETTE BURNETT
JEANETTE BURNETT

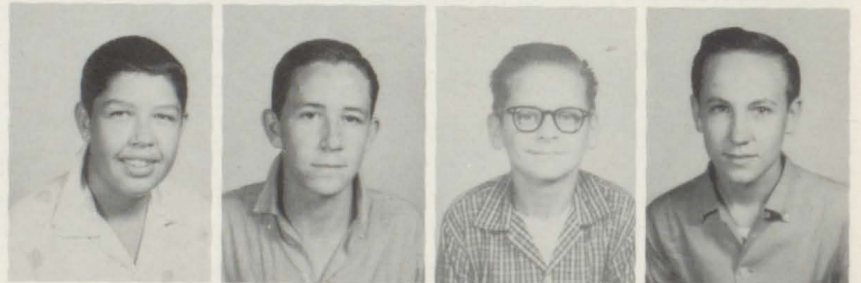


ALTON CAGLE
JUDY CASH
JANE CHILDERS
DELENE COCHRAN

GEORGE COLE
MARK COLLETT
SANDRA COLLETT
SARA COLLETT



TILLMAN COLLETT
EVERETT COOK
JIMMY CONNER
LARRY COOK



RICKY DALTON
JUDY DANGAR
PEGGY DAVID
RITA ANN DODD



Freshmen

DENNY EARNSHAW
RUBY EUBANKS
LARRY FOSTER
ANN FOUTS



DEMETRA FOWLER
MARCUS GARRETT
LOY GREEN
BARBARA HAMRICK



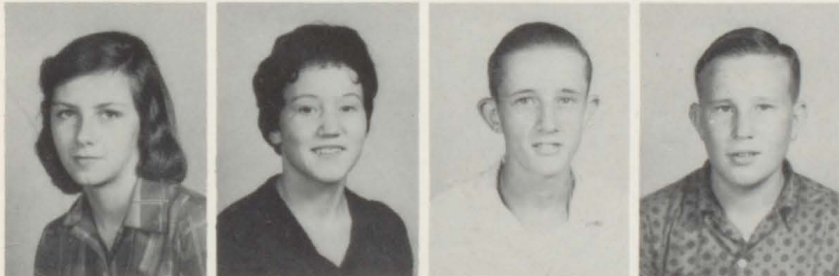
FRANCES HAMRICK
JACKIE HAMRICK
JOYCE HANSARD
ROBERT HANSARD



RICHARD HAYES
GLENDA HENDERSON
DIANNE HOLBROOK
DOUG HOLBROOKS



LARRY HOLBROOKS
DIANNE HOLCOMBE
ELSIE HUDSON
ANN HYDE



DIANNE JACKSON
JUDY KEMBLE
DELBERT KIRBY
DONALD KIRBY



LAMAR LATHEM
ROBERT LATHEM
ANNETTE LONG
JANICE MAJOR

Freshmen



JAMES MARTIN
LARRY MATTHEWS
FAYNELLE McCLAIN
JOAN McFARLAND



JUDY McFARLIN
MARGARET MOORE
JUDY MOSS
RANDALL MOSS



RUBY NALLEY
KENNY PAYNE
MARTHA NEAL PAYNE
NELLIE FAYE PAYNE

MELBA PENDLEY
BRENDA PHILLIPS
RICHARD PHILLIPS
SYDNEY POTTS



ATWARD POWELL, JR.
JUDY POWELL
JAMES PRUITT
SHIRLEY PRUITT



BOBBY RAINWATER
JACKIE RAINWATER
HUGH RUCKER
TOMMY RUSK



HARVEY SARGENT
JUDY SCALES
LAWRENCE SHIRLEY
JUDY SHULER



Freshmen

ALLEN RAY SMITH
HENRY SPENCE
NANCY STANDRIDGE
BETTY STATON



JAMES STEWART
JANICE STEWART
FRED STILES
JUDY SUTTON



JAMES TATUM
RODDY THOMAS
JANE THOMPSON
JIMMY THOMPSON



MILDRED THORNTON
CAROLYN TIMMS
TONY TIMMS
LINDA TREADAWAY



ROYCE VAUGHAN
JANICE WATERS
JOYCE WATKINS
JAMES WATSON



BARNEY WEST
PATRICIA WESTBROOKS
JOAN WILLIAMS
DAVID WILSON



JANICE WILSON
LINDA WILSON
DIANNE WINGO
DAVID WOOD

Sub-Freshmen

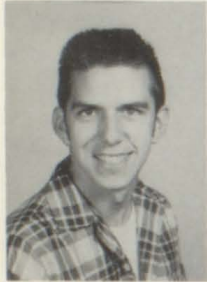
CARROLL ANDERSON
 J. L. ANGLIN
 DOYCE BAILEY
 ROBBY BARNETT



BILLY BELL
 JOAN BELL
 JEANETTE BENNETT
 LARRY BENNETT



LARRY BENNETT
 BRENDA BIDDY
 JEAN BISHOP
 SONNY BLACKWELL



JERRY BLALOCK
 SHIRLEY BOWEN
 GARY BRANHAM
 RICHARD BROOKS



FRED BROWN
 FRANKLIN BRUMBELOW
 MARY BUICE
 JOYCE BUTLER



WYNELLE BUTTERWORTH
 CHARLES CARRIGAN
 BUDDY CARROLL
 MARTHA CARRUTH



ROGER CASTLEBERRY
 DONNA CHESTER
 REBECCA CHRISTIAN
 ROY CLAYTON

Sub-Freshmen



BARRY COLEMAN
MARK COLLETT
RAY COLLETT
SUSIE CONNER



BRENDA COOK
LAMAR COX
MARGIE COX
MAHALA CRISLER

KENNETH DANGAR
GLENDA DAVIS
JEAN DAY
HOWARD DAY



BRENDA DINSMORE
HELEN DINSMORE
CARLOS DOCKERY
JOHNNY DOBSON



LINDA DUNCAN
GEORGE ECHOLS
GAY EDWARDS
DOUGLAS ELLIOTT



DANNY ELLIS
DONNA ELLIS
JIMMY ELLIS
BARBARA ESTES



ELLYNE FINDLEY
BERNICE FINE
DIANE FORRESTER
BARBARA SUE FOX



Sub-Freshmen



JUANITA FREELAND
DAVID FULLER
CHRISTINE GARMON
JEROL GARRISON



BEVERLY GARRETT
MARCUS GARRETT
VIVIAN GILBERT
PATRICIA GORMAN



JACKIE GORMAN
PATRICIA GRANT
JAMES GRAVITT
ANN GREEN



LOWRY GREEN
LARRY GRESHAM
MARY MARGARET GRIFFIN
JIMMY HAMRICK



LONNIE HAMRICK
PEGGY HAMRICK
DREMA DAWN HANEY
BONNIE HANEY
BRENDA HANSARD

JAMES HARBIN
RICHARD HAYES
JOEL HENDERSON
SANDRA HENDERSON



CATHY HENDRICKS
CAROLYN HOLCOMBE
JUDY HOLDEN
LARRY HOLDEN



Sub-Freshmen

ROBERT HOLDEN
 RUNNELL HOLTZCLAW
 JERE HOOK
 LYNN HULSEY



JERRY HYDE
 DERYL INGRAM
 DIANNE JACKSON
 RITA JETT



JOE JOHNSON
 CAROLYN JONES
 DAVID JONES
 JIMMY KELL



KATHY KENDRIX
 MARY KENDRIX
 JUDY KIMBRELL
 LAMAR LATHEM



JOE LAWLESS
 ALFRED LEE
 CARLTON LIVELY
 EDDIE LONER
 MOZELLE LONG



DAVID LORD
 SUSAN MANNING
 LARRY MANUS
 PATRICIA MARSHALL



BARBARA MARTIN
 LINDA MARTIN
 PATSY MASSEY
 BARBARA MATHIS

Sub-Freshmen

KENNETH MATHIS
ALICE FAY MAULDIN
JULIE McCLAIN
VIVIAN McCLESKEY



GAIL McGINNIS
SHEILA McWHORTER
EDITH MEEKS
MILLARD METCALF
BETTY PHILLIPS



JOHN MORRIS
POLLY MOSES
JIMMY MOSS
LINDA MOSS



NANCY NOSS
PATRICIA MOSS
JERRY MOULDER
BRENDA MULLIGAN



BOBBY MYERS
SANDRA NALLEY
HULUN NICHOLS
RICHARD NICHOLS



KENNETH NUNN
ELOISE PADGETT
JACKIE PAYNE
MELVIN PEARSON



DONALD PENCE
RONALD PENCE
BRENDA PENDLEY
CHARLES PETTYJOHN

Sub-Freshmen



BARBARA PHILLIPS
EARNESTINE PHILLIPS
GRADY PITTS



GENE POTEETE
SYDNEY POTTS
NANCY PURDOM
LOTTIE PRUITT

PATRICIA PRUITT
WILLIAM PRUITT
JEAN LEE
JIMMY RAINWATER



RITA RAYNER
JOY REEVE
MICHAEL RIDINGS
ELIZABETH RODGERS



JIMMY ROGERS
FAY SAMPLES
SUZANNE SHEARIN
HELEN SHIRLEY



MARTHA SHIRLEY
ANITA SIMS
RUSSELL SMITH
TERRY SMITH



CLARA SPRUELL
SUE SPORT
LARRY STANCIL
GEORGE STAPLER



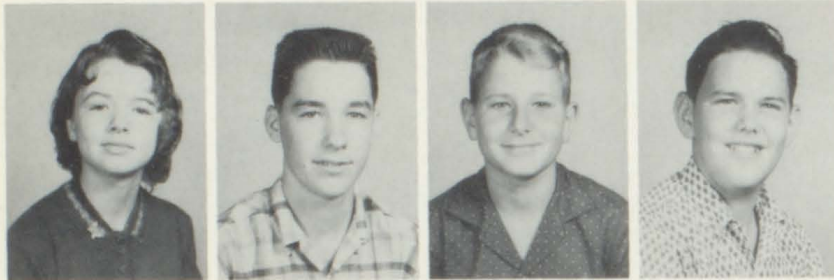
Sub-Freshmen



JAMES STEWART
ROGER SUGGS
BOBBY SUTTON
DAVID TREADAWAY



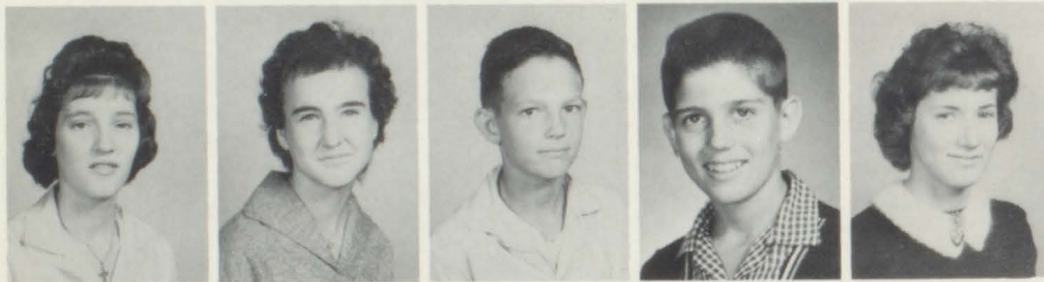
DORIS TREADAWAY
LINDA TREADAWAY
SHIRLEY TREADAWAY
JANIE MAE TRUSTY



ANNETTE VAUGHAN
ROY VAUGHAN
TROY WADDELL
ERIC WALDEN



TOMMY WALLACE
GAIL WALKER
PATRICIA WALKER
MONTEZ WARREN



BARBARA WALLS
SUE WHITT
DOUGLAS WILLIAMS
DAVID WILSON
LINDA WILSON

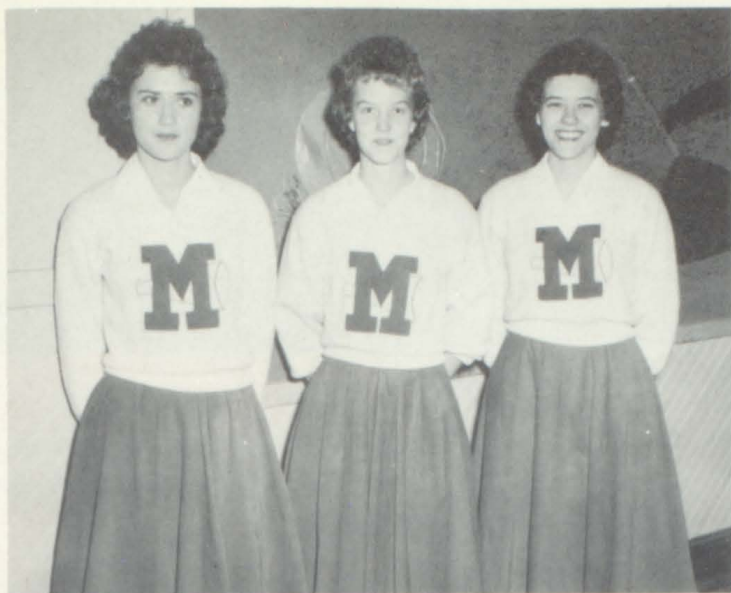
BARBARA ANN WILKIE
GENEVA WOOD
FRANK WOOD
JERRY WRIGHT



THOMAS YOUNG
JACKIE GARMON
JERRY GARMON
SUE STAPLER



CLASS OFFICERS



JUNIORS

President..... VIRGINIA PORTER
 Vice-President..... BRENDA MOSTELLER
 Secretary-Treasurer..... MARJORIE FRUITT



FRESHMEN

President..... BARBARA HAMRICK
 Vice-President..... JUDY McFARLIN
 Secretary-Treasurer..... JOAN WILLIAMS



SOPHOMORES

President..... BRENDA PHILLIPS
 Vice-President..... ARTHUR LETCHAS
 Secretary-Treasurer..... TED WALKER

SUB-FRESHMEN

President..... LARRY BENNETT
 Vice-President..... SANDRA HENDERSON
 Secretary-Treasurer..... DANNY ELLIS

CONGRATULATIONS TO MILTON HIGH
SCHOOL
CLASS OF 1960
FROM



AMERICAN LEGION POST 201

AMERICAN LEGION AUXILIARY UNIT
201

THE AMERICAN LEGION AND ITS AUXILIARY ANNUALLY SPONSOR MORE AMERICANISM
PROJECTS IN OUR NATION'S SCHOOLS THAN ANY OTHER ORGANIZATION IN THE WORLD

COMPLIMENTS OF
THE ROSWELL BANK



A MEMBER OF THE FEDERAL DEPOSIT INSURANCE CORPORATION

WALTER EAVES, PRESIDENT

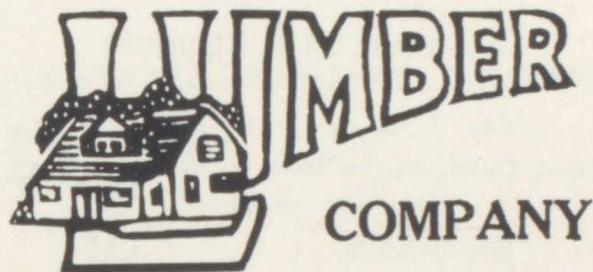
ROSWELL,

GEORGIA

COBB COUNTY RURAL ELECTRIC
MEMBERSHIP CORPORATION

"ELECTRICITY
FOR MODERN LIVING."

SERVING BARTOW, CHEROKEE, COBB,
FULTON, AND PAULDING
COUNTIES



W.F. Stephens

Lumber Company

"STEPHENS QUALITY IS YOUR
BEST ASSURANCE OF ECONOMY."

PHONE 993-6363



ROSWELL,

GEORGIA

COMPLIMENTS OF

REECE
SODA COMPANY
PHONE GR 5-2841



ALPHARETTA,

GEORGIA

MCPHERSON'S

RADIO AND TELEVISION
SERVICE

PHONE 993-3231

ROSWELL,

GEORGIA

COMPLIMENTS OF

PARSONS

DULUTH - CUMMING - BUFORD

FLOWERY BRANCH

NORCROSS

COMPLIMENTS OF

ECONOMY AUTO STORE
AND
ROSWELL AUTO STORE

E. L. BUICE, OWNER

ROSWELL,

GEORGIA



ALPHARETTA FLORIST

THE FLORIST
THAT ORIGINALITY BUILT

GR 5-5605
993-6355

"WE SERVE"



DURHAM AND TAYLOR SUPPLY
COMPANY

CONCRETE PRODUCTS
SEPTIC TANKS-DRAIN TILE-BELL AND
SEWER PIPE AND FITTINGS

ALPHARETTA, GEORGIA

DAY ONLY
GR 5-5609

DAY AND NIGHT
GR 5-5627

MILTON HIGH BETA CLUB

ACHIEVEMENT

CHARACTER

LEDERSHIP

LET US SELL YOUR FARM!
GEORGIA REAL ESTATE
SERVICE

RALPH DANGAR
AGENT

PHONE 993-6621



Milton High School P.T.A.

MR. AND MRS. FRED STILES

CO-PRESIDENTS



ETRIS SAUSAGE
COMPANY

ALLSTATE INSURANCE COMPANY

LIFE - AUTO - FIRE
HOSPITALIZATION

RALPH WILSON
AGENT

CRABAPPLE GROCERY

GEO. F. BATES

GENERAL MERCHANDISE
GAS AND OILS

GR 5-2061

CRABAPPLE,

GEORGIA

COMPLIMENTS OF
STRICKLAND AUTO PARTS

958 ALPHARETTA STREET
ROSWELL, GEORGIA

PHONES
993-4086 993-6828

THE 1960 CHEERLEADERS

CAPTAIN CO-CAPTAIN
BRENDA MOSTELLER MARJORIE PRUITT
BEVERLY ABERCROMBIE
BRENDA PHILLIPS
VIRGINIA PORTER
JUDY MCFARLIN
JOAN WILLIAMS
DIANNE HOLBROOK

COMPLIMENTS OF
SMITH 5 AND 10



ROSWELL, PHONE 993-6582 GEORGIA

COMPLIMENTS OF
BYERS FURNITURE STORE

PHONE 993-3042



ROSWELL, GEORGIA

COMPLIMENTS OF
J.C. COWART

INSURANCE FERTILIZER
PHONE
GR 5-2074
GR 5-5831

ALPHARETTA, GEORGIA

GREEN HORNET
RESTAURANT

LUNCHEONS
DINNERS
HO-MADE PIES
STEAKS AND CHICKEN
PHONE 993-6149
ROSWELL, GEORGIA



COMPLIMENTS OF

LOVABLE BRASSIERE COMPANY

2400 PIEDMONT ROAD AT GARSON DRIVE

ATLANTA 5, GEORGIA

MILTONIANS, STAY INFORMED BY READING

SCHOOL ECHOES

PUBLISHED TWELVE TIMES A YEAR BY THE
JOURNALISM CLASS



RINGS — INVITATIONS — CARDS

JOSTEN'S

CAPS AND GOWNS

TY STOKES CAPS AND GOWNS

HERB THOMPSON

TY STOKES

2118 GLENDALE DRIVE

DECATUR,

GEORGIA

Phillips Variety Store

PHONE GR 5-5444

ALPHARETTA,

GEORGIA

BATES AND WOOD SUPER MARKET



ALPHARETTA,

GR 5-5641

GEORGIA

THE BONFIRE RESTAURANT

NORTH MAIN STREET

GR 5-6198

ALPHARETTA,

GEORGIA



COURTESY OF

GEORGE LATHEM,

BUILDER

COMPLIMENTS OF

ROSWELL MOTOR COMPANY



SALES

SERVICE

ROSWELL,

GEORGIA

COMPLIMENTS OF
LEE BARRON
SHELL DEALER



ROSWELL,

GEORGIA



COMPLIMENTS OF

TOMMY HENDERSON

ALPHARETTA,

GEORGIA

COMPLIMENTS OF

ROSWELL CLEANERS



993-6396

COMPLETE LAUNDRY AND DRY CLEANING
ROSWELL, GEORGIA

HENDERSON TV SERVICE

GR 5-5000

ALPHARETTA, GEORGIA

CONGRATULATIONS TO THE
1960 SENIOR CLASS



TEXACO SERVICE STATION

ALPHARETTA, BOBBY HAGOOD GEORGIA

COMPLIMENTS OF

HAWKINS FEED STORE



PHONE 993-2421

ROSWELL, GEORGIA

COMPLIMENTS OF

ALPHARETTA ELEMENTARY
SCHOOL

ALPHARETTA, GEORGIA

REEDER & McGAUGHEY, INC.

"SPECIALISTS IN SPORTS"

AWARD JACKETS

SWEATERS

TROPHIES AND MEDALS

SPECIAL SERVICE ON MAIL ORDERS

BROAD AND WALTON

ATLANTA 3, GEORGIA

COMPLIMENTS OF

CAGLE AND HENDERSON
FEED CO.

993-2381

ROSWELL, GEORGIA

COMPLIMENTS OF

MARSH BUSINESS COLLEGE

322 IVY STREET, N. E.

ATLANTA, GEORGIA

PHONE JACKSON 5-6813

Sawnee Electric Membership Corporation

CUMMING, GEORGIA

"A RURAL ELECTRIC CO-OPERATIVE"

"OWNED BY THOSE WE SERVE"

GUY W. FINDLEY, PRES.

W. F. DARNELL, VICE-PRES.

HOMER A. BUICE, SEC.-TREAS.

DIRECTORS

C. A. BAGWELL
HORACE C. HUGHES
L. E. MOORE

DEAN LEDBETTER
J. C. VAUGHN, JR.
R. T. BAGLEY

THE GIFT SHOP
GR 5-5738

GIFTS OF
Lasting Beauty

HALLMARK CARDS
AND

GIFTS FOR ALL OCCASIONS

ALPHARETTA, GEORGIA

ALPHARETTA APPLIANCE
AND
SERVICE, INC.

FRIGIDAIRE APPLIANCES

PHONE GR 5-5212

ALPHARETTA, GEORGIA

CONGRATULATIONS
TO THE
SENIOR CLASS OF 1960

ALPHARETTA CLEANERS

PHONE GR 5-5736

ALPHARETTA, GEORGIA

COMPLIMENTS OF

C. D. PEARSON'S GROCERY

HOPEWELL ROAD

ALPHARETTA, GEORGIA

PHONE GR 5-5986

CONGRATULATIONS, GRADUATING CLASS

OF

MILTON HIGH SCHOOL

It's better than good...it's

FOREMOST

THE GREAT NAME IN DAIRY PRODUCTS

WHEN YOU SEE DAIRY PRODUCTS, LOOK FOR THIS TRADEMARK!



Saluting

the
graduating
class

DRINK
Coca-Cola
REG. U.S. PAT. OFF.

BOTTLED UNDER AUTHORITY OF THE COCA-COLA COMPANY BY

COMPLIMENTS OF
L.B. FINDLEY
FEED, SEED, FERTILIZER



DULUTH,

GEORGIA

COMPLIMENTS OF
1959-1960 GIRLS'
BASKETBALL TEAM

ANN CARRUTH, CAPTAIN
ELLEN JOHNSON, CO-CAPTAIN
BRAD SANDERSON, COACH

COMPLIMENTS OF

BARNETT BROTHERS



COMPLIMENTS OF

ECONOMY PHARMACY



DULUTH,

GEORGIA

Office Sales & Service

SCHOOL AND OFFICE SUPPLIES

214 ATLANTA STREET

COMPLIMENTS OF

Atlanta Dairies
COOPERATIVE

ATLANTA,

GEORGIA

MARIETTA,

GEORGIA

COMPLIMENTS OF

GORDON'S DEPARTMENT STORE

PHONE GR 5-5923

ALPHARETTA,

GEORGIA

COMPLIMENTS OF

ORA'S BEAUTY SHOP



ROSWELL,

GEORGIA

COMPLIMENTS OF

NORTH FULTON HERALD

SERVING ALPHARETTA, ROSWELL
SANDY SPRINGS AND ADJACENT
COMMUNITIES

901 ATLANTA STREET

ROSWELL,

GEORGIA

COMPLIMENTS OF

LITTLE
COUNTRY KITCHEN

ROSWELL,

GEORGIA

COMPLIMENTS OF

FUTURE TEACHERS OF AMERICA

ALICE BURTON, SPONSOR

JANE MAULDIN, PRESIDENT



FUTURE HOMEMAKERS OF AMERICA

MRS. BARBARA DICKERSON, ADVISER
LINDA TUCKER, PRESIDENT

COMPLIMENTS OF

ROSWELL
FUNERAL HOME

ROSWELL,

GEORGIA

DECORATE TODAY.....MOVE IN TODAY
 MINFLO MODERN FLAT



SPRING, SUMMER, WINTER OR FALL...PAINT WITH MINFLO AND IN 20 MINUTES YOU CAN LIVE IN YOUR NEWLY DECORATED SURROUNDINGS. IT HAS NO PAINT-LIKE ODOR, CAN BE APPLIED WITH BRUSH OR ROLLER AND DRIES TO A RUBBER-TOUGH FINISH. WITH MINFLO YOU CHOOSE FROM NON-TIRING INTERIOR SHADES THAT GIVE YOUR WALLS A MODERN FLAT FINISH SO FLATTERING TO YOUR OWN STYLE OF FURNISHINGS.



BARNETT BROS., INC.

WASHING MACHINES
 WESTINGHOUSE
 LAUNDRYMAT
 SPEED QUEEN

ALPHARETTA, GEORGIA
 P. O. Box 188
 GROCERIES . . . Dial 5786
 HARDWARE . . . Roswell 6373

REFRIGERATORS
 AND RANGES
 WESTINGHOUSE

RED DOT GROCERY . . . SELF SERVICE . . . GENERAL MERCHANDISE

COMPLIMENTS OF THE

PARALAND
 SERVICE STATION

ALPHARETTA, GEORGIA

COMPLIMENTS OF

LOUIE E. JONES
 FUNERAL HOME

PHONE
 GR 5-2171
 Res. GR 5-3431 - GR 5-5524

ALPHARETTA, GEORGIA

COMPLIMENTS OF

G. E. BURGESS-NOLAN E. STEPHENS

INDEPENDENT
 SERVICE STATION

GR 5-5062 - ALPHARETTA, GEORGIA



School Days???



PATRON'S PAGE

JIMMY AND DIANNE

BOBBY ALLEN

GEORGIA RUSSELL

"ARCHIE AND MICKEY"

GLENDA GIBBS

JANE AND CURTIS

WAYNE AND VIRGINIA

LINDA AND EDDIE

JO

MARJORIE AND CARROLL

JERRY AND LINDA

ANNE LASTINGER

FRANKLIN AND THE GANG

MARIE AND ROBER

SUSAN AND DANNY

JUDY SHULER

"TRUDY" AND TOMMY

SALLY AND JIMMY

PAT BOLING

AUBREY FERRELL

HILDA AND DORRIS

BRENDA AND AUBREY

DALE AND VAN

MISS R. C.

MORRIS WILLIAMS

MARGARET AND MARVIN

JOYCE AND LARRY

JANE AND BOBBY

"STAGGER LEE"

FRANKIE AND TOMMY

LOUISE AND ALTON

SANDRA AND LARRY

H. D. AND JUDY

GEORGE AND LAVERNE

ROBERT AND SHIRLEY

ANONYMOUS

PAT AND DAVID

WILBURN AND ELLEN

GWEN ASHERBRANNER

ROY "BLUEJAY" FIELDS

PEARL AND DAN

CLEON AND CAROL

VIRLYN AND JUDY

SARAH AND MARION

JEAN TAYLOR

WILLORA AND BARBARA

ALICE AND "LED"

OUR PROFESSIONAL PAGE

SUCCESS AND BEST WISHES

TO THE
38TH SENIOR CLASS



DR. J. A. DRIVER
OPTOMETRIST

DR. M. H. MASON
DULUTH

DR. JOHN D. MEADOR
ALPHARETTA, GEORGIA

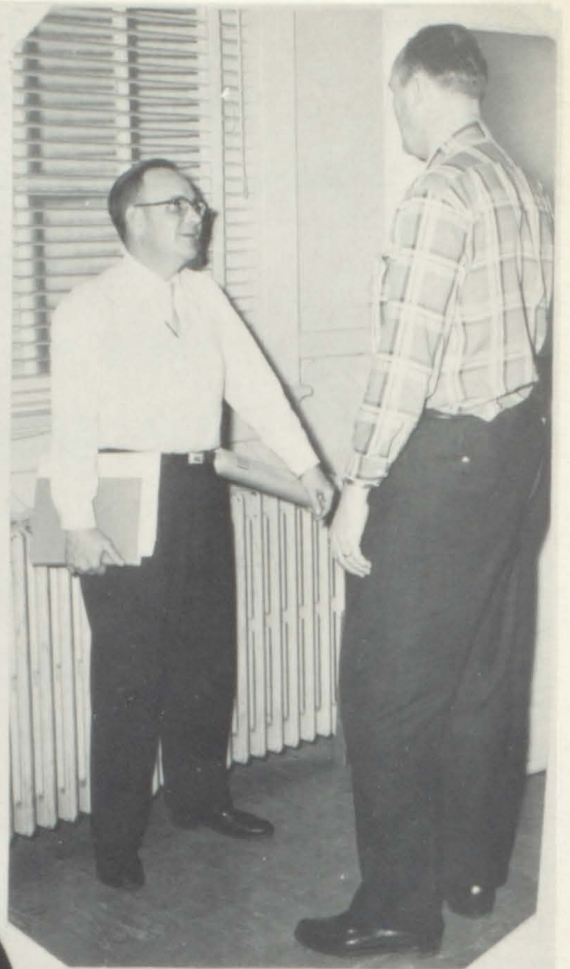
DR. GEORGE S. TOOTLE
DULUTH

DR. T. D. WORTHINGTON
DENTIST

DR. JOHN H. HINES
ROSWELL

DR. K. E. WILSON
DENTIST

DR. JAMES F. LANGFORD
ROSWELL



Oh! Those Expressions



Hi Yell



Cool, man, cool



Look Mommy I just spilled INK ON THE RUG!



Why, not Geraldine?



Sleepy? yawn yawn



Exercise your muscles, cats!



Smmmmack Um, what a Shunk Chocolate



Secrets, Secrets



Looking the Coffin?? over



I didn't either



Medulla Oblongata, See there!!!



Study, Study



Future President?



Try to sneak, will ya?



Now, Marvin...



Aww, gee!!!



Really?

Autographs

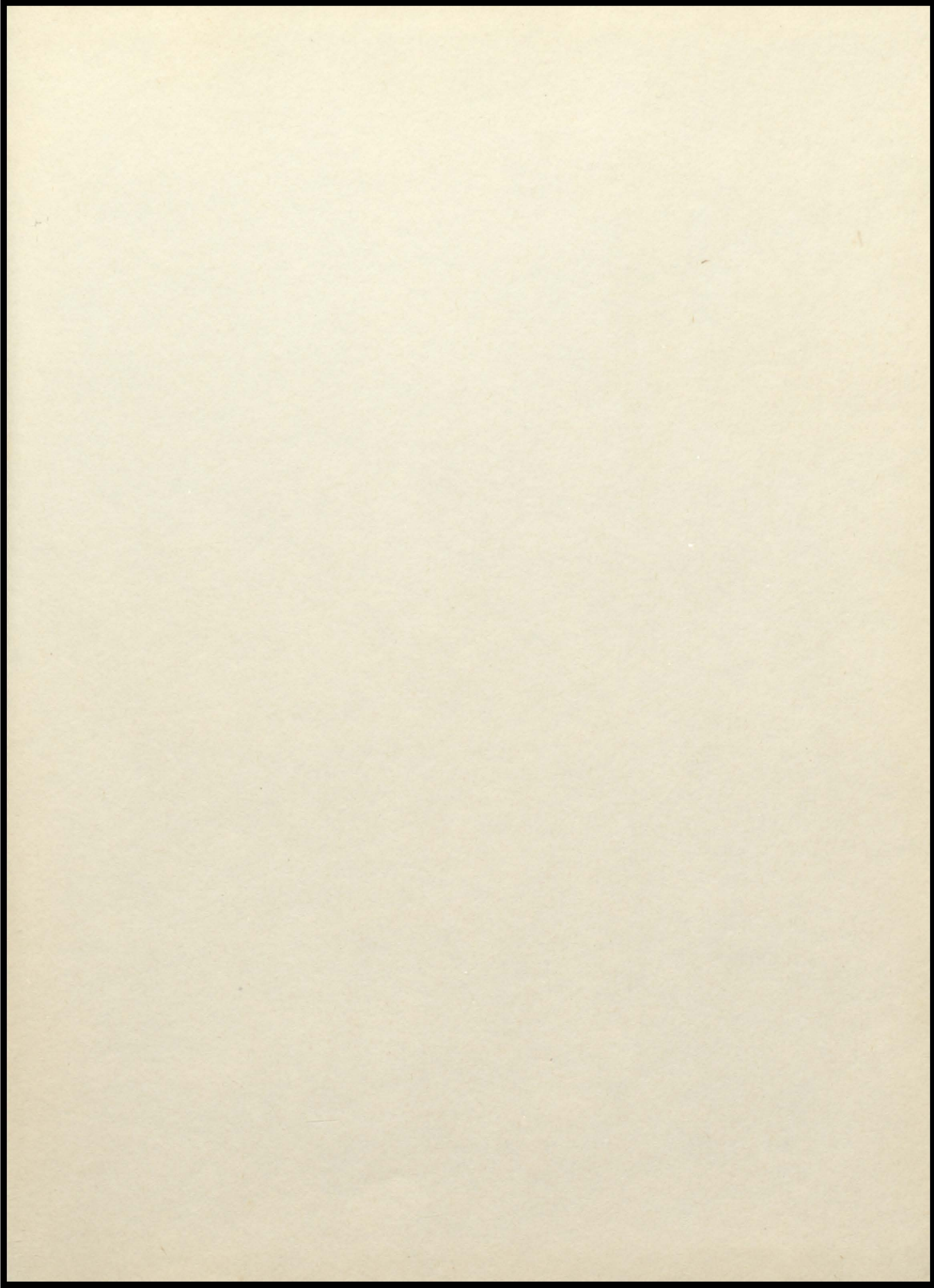


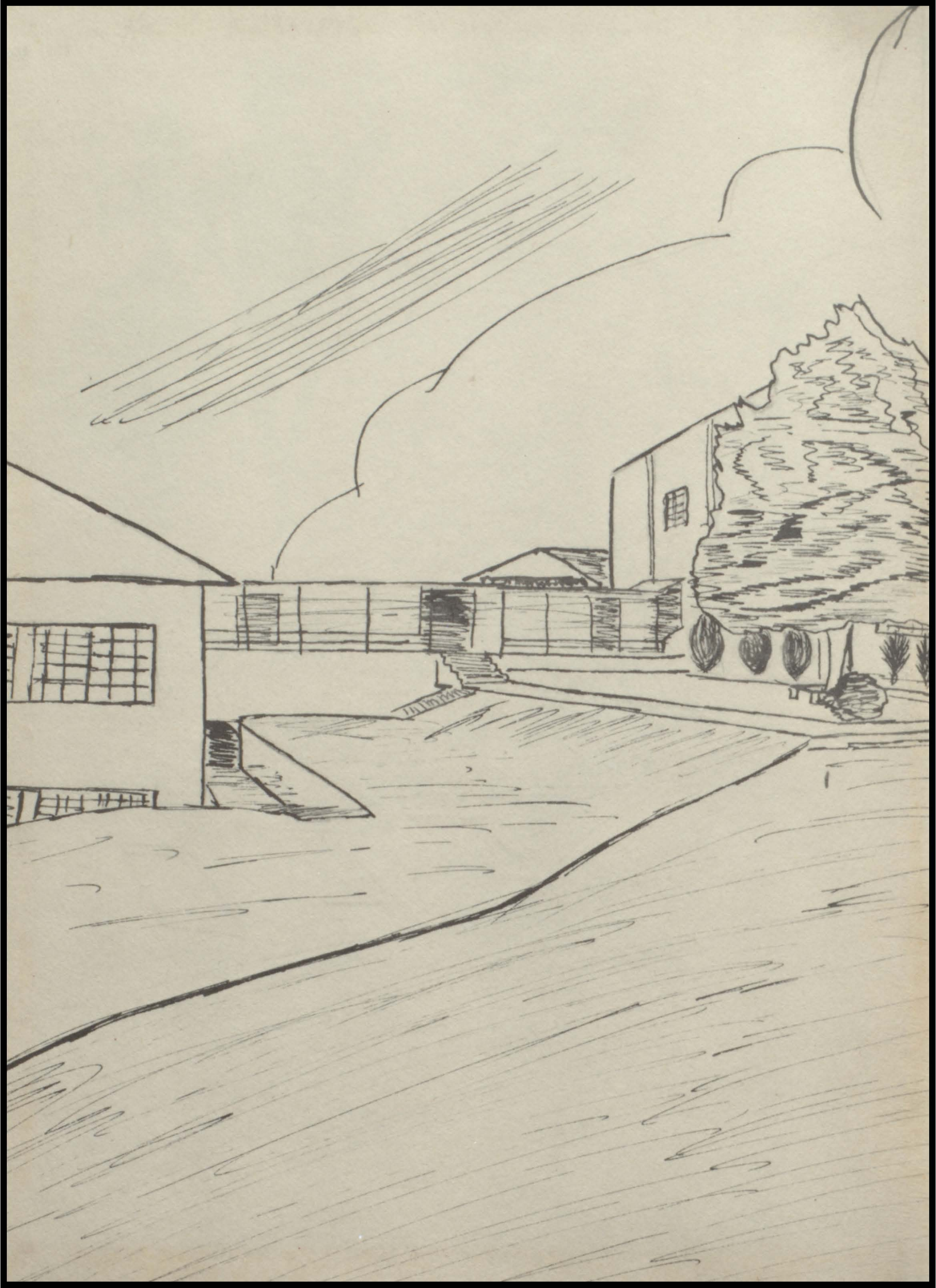
Autographs

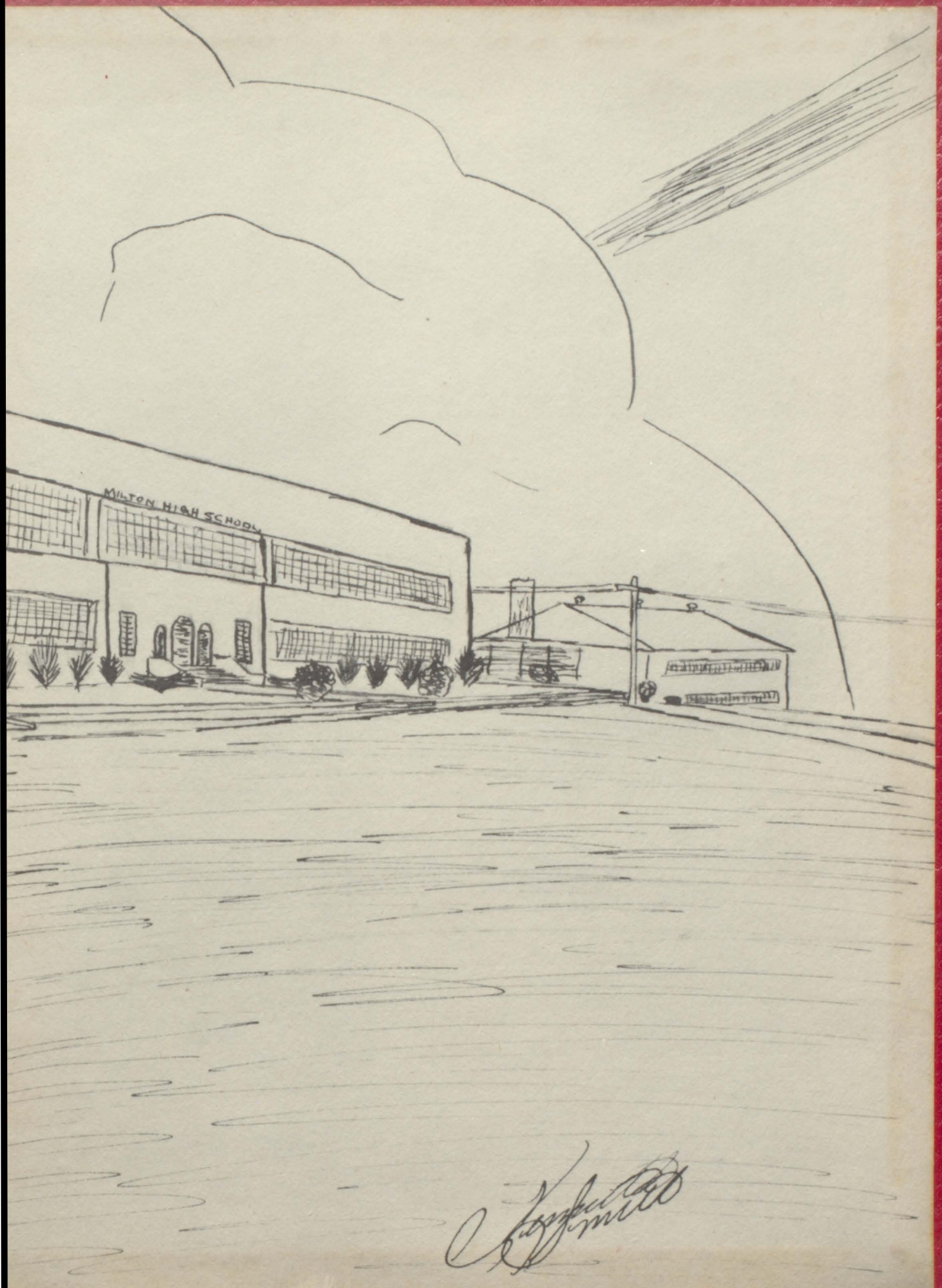


Autographs









MILTON HIGH SCHOOL

Handwritten signature

