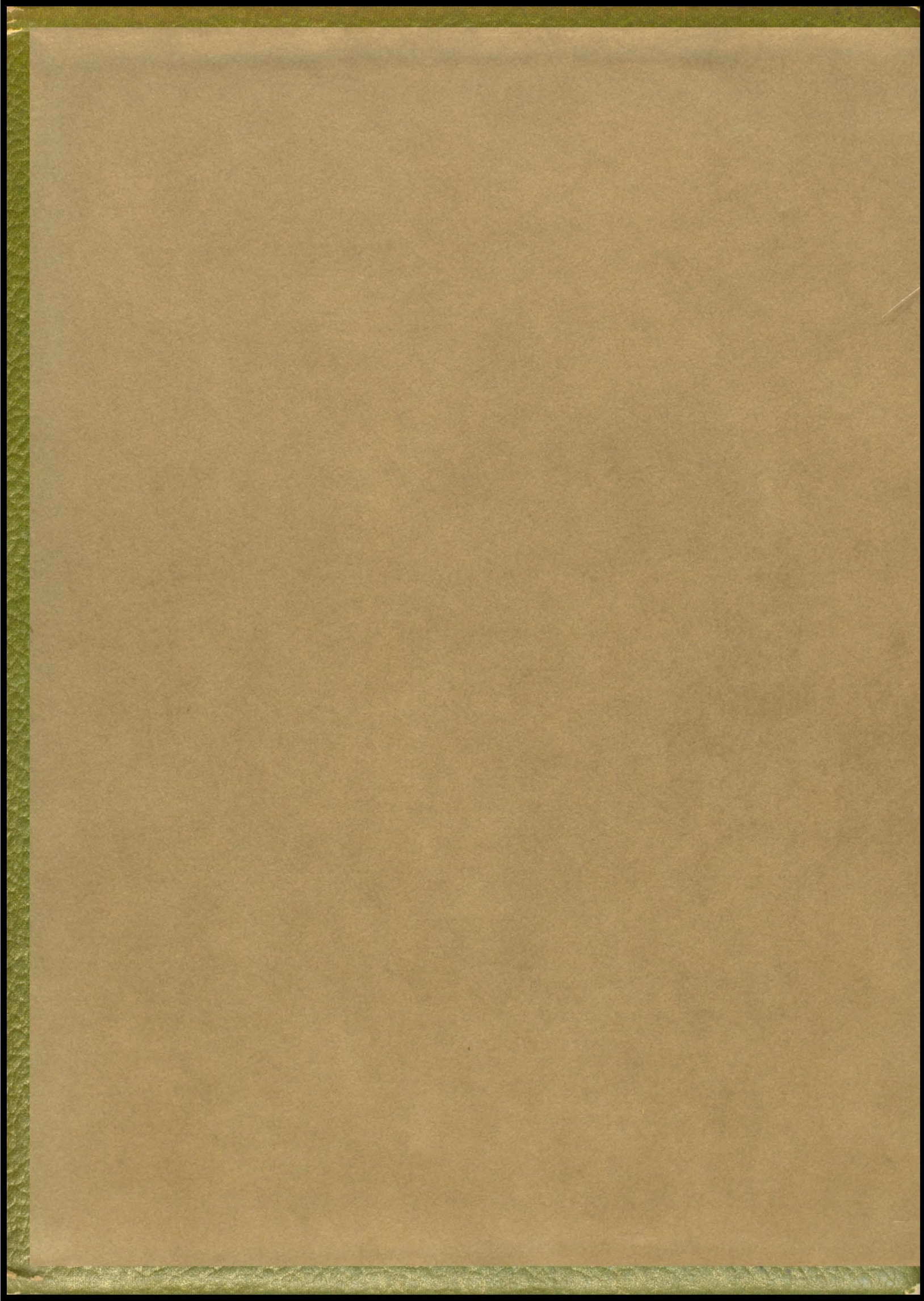
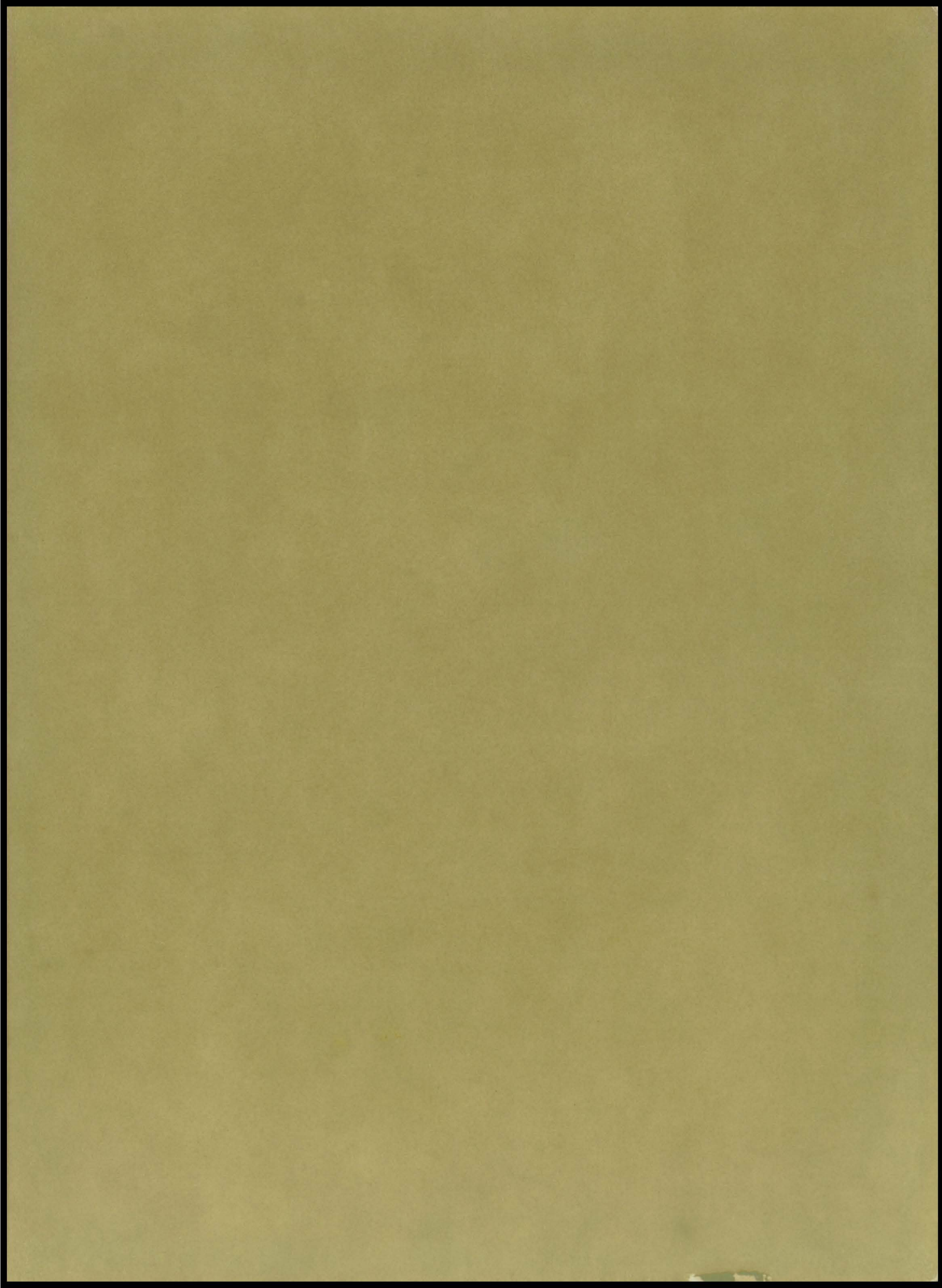


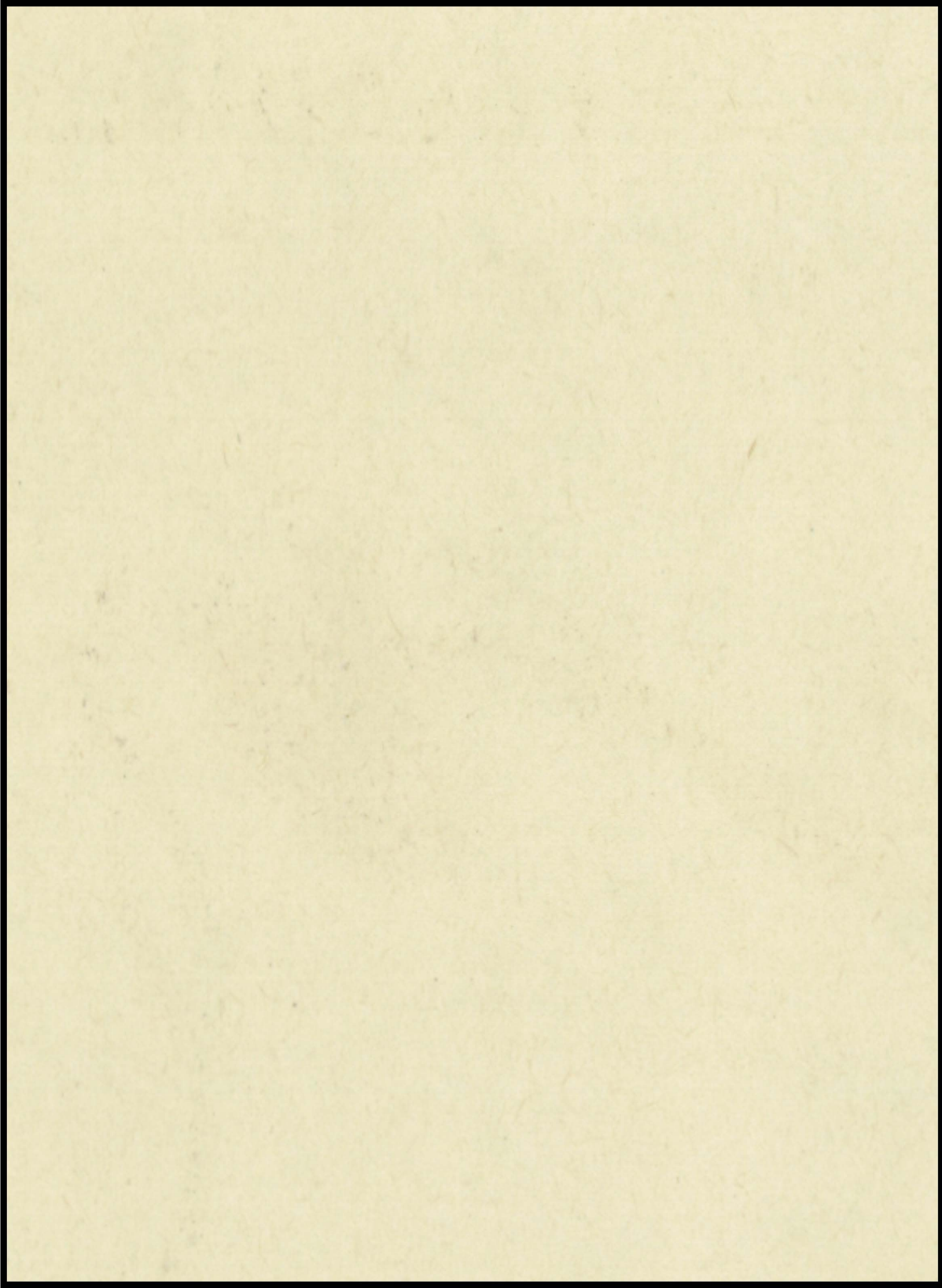
1961



AERIE







THE 1961

AERIE

Presents...



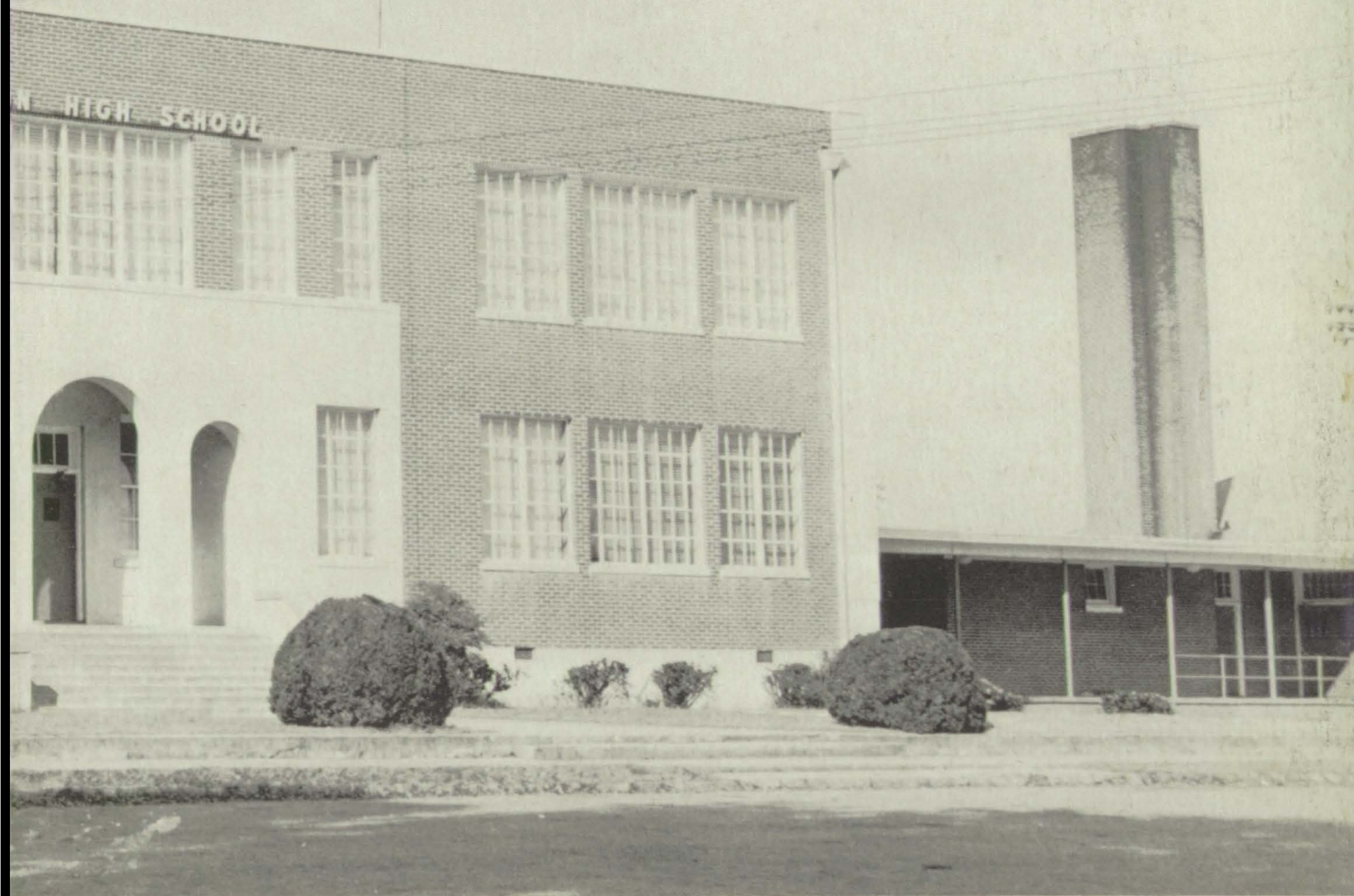
“Golden

Dreams

Come True”



Scene – Milton High School, Alpharetta, Georgia. The spacious and well-equipped building with its beautifully landscaped campus, creates an ideal scene for the presentation of the learning efforts and varied activities of Milton students.





The beautiful football stadium, the well-planned track area and baseball diamond, and the modern gymnasium, are perfect settings for the four athletic teams' presentation of their whole-hearted efforts.



Included in the distinctive scenes representing our school life are the homes in the community. The various social activities of our school are provided with wonderful atmosphere in our homes.



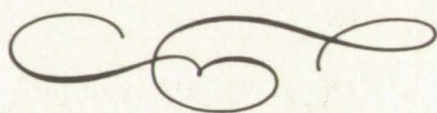
GOLDEN DREAMS COME TRUE

Act I.....SENIORS
Act II..... FEATURES
Act III..... ACTIVITIES
Act IV.....SPORTS

Presented by the
1961 AERIE

THE 1961

AERIE



Co-Editors -

BRENDA MOSTELLER
MARJORIE PRUITT

Business Manager -

BETTY GREEN

MILTON HIGH SCHOOL

Alpharetta, Georgia

Dedication

Your brilliant mind, stimulating personality, and endearing loyalty and concentrated devotion to MHS have inspired the 1961 AERIE staff to dedicate this AERIE to you.

Cherished memories are those of working with you on many projects, learning from your instruction, and enjoying your friendly conversation.

As an expression of our appreciation and great respect for you,

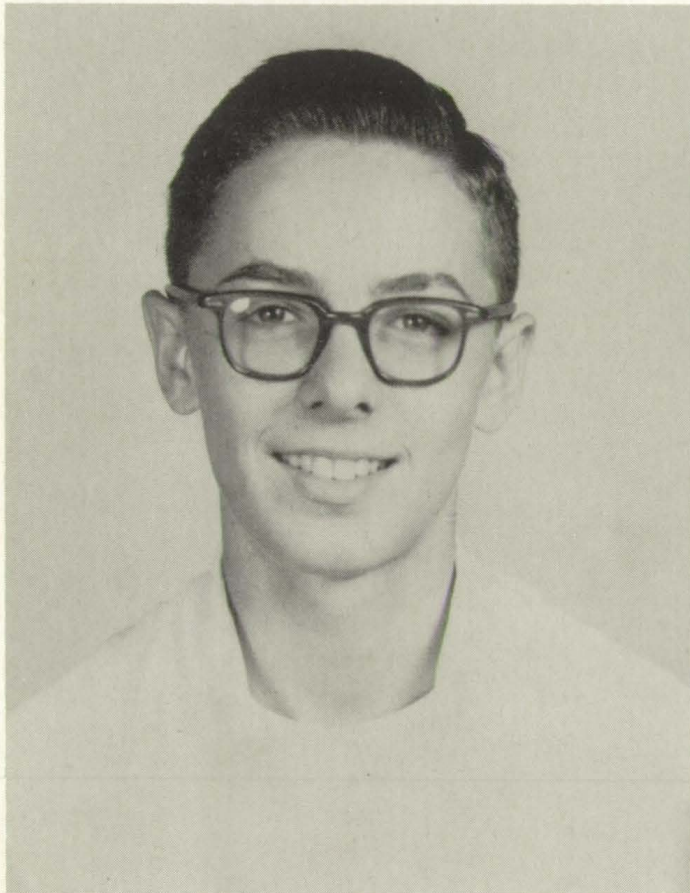
MRS. ELIZABETH ELLIOTT,

we are proud to make this dedication.

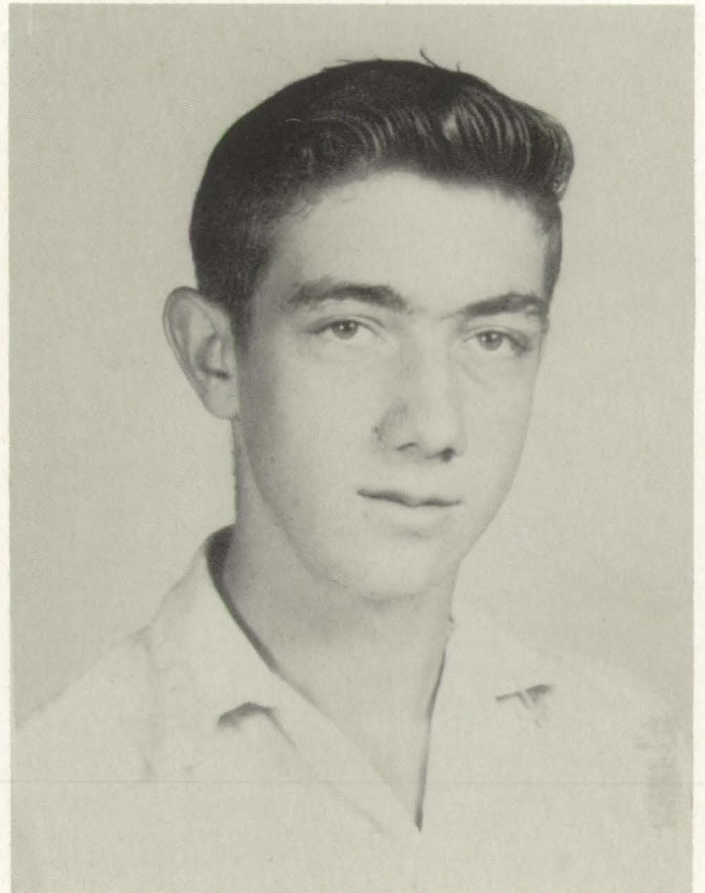




In Memoriam



JIMMY RAINWATER



JAMES HARBIN

THE MEMORY OF THESE TWO CLASSMATES
REMAINS WITH US BECAUSE WE CHERISH THE
EXPERIENCES WE SHARED WITH THEM.



MR. P. L. ELKINS

*HIS INNUMERABLE CONTRIBUTIONS TO MHS
SERVE AS EVERLASTING MONUMENTS OF HIS WORTH-
WHILE EFFORTS AND INVALUABLE ACHIEVEMENTS.*

Play Directors



MR. VICTOR B. HANSARD
Principal



MR. LUCIEN BATSON
Social Science, Language



MR. CAROL BEAVERS
Physical Education



MISS RUTH HIGGINS
Assistant Principal



MR. RALPH WILSON
Counselor



MR. NORMAN BROADWELL
English, Social Science



MR. REUEL BURGESS
Mathematics



MISS WILLIE CHAPMAN
English, Mathematics



MISS ELIZABETH COOPER
Mathematics



MISS RUBY CRAWFORD
English



MRS. JOHN M. DICKERSON
Home Economics, Cafeteria



MRS. P. L. ELKINS
Home Economics



MRS. VAN ELLIOTT
English



MRS. CLINTON GRIMES
Assistant Librarian



MR. MILTON HAMBALEK
Citizenship



MRS. HILL HARMAN
English



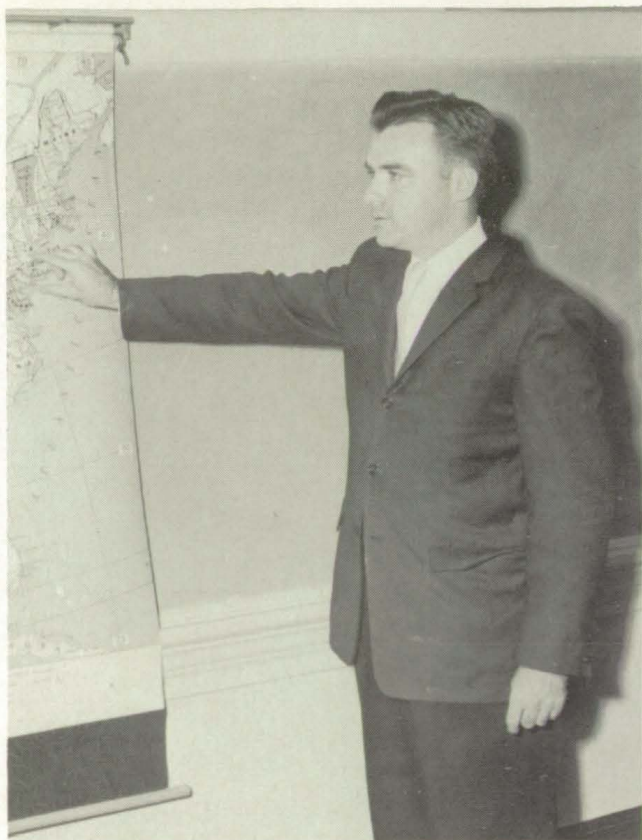
MR. CLAYTON HAWKINS
General Science



MRS. MARY SUE HOLCOMBE
Secretary



MR. HAROLD HUGHES
Shop



MR. WARREN J. KENERLY
Social Studies



MISS ANNE LASTINGER
Music



MR. GUS LETCHAS
Health, Mathematics



MRS. BLANCHE MADDOX
Music



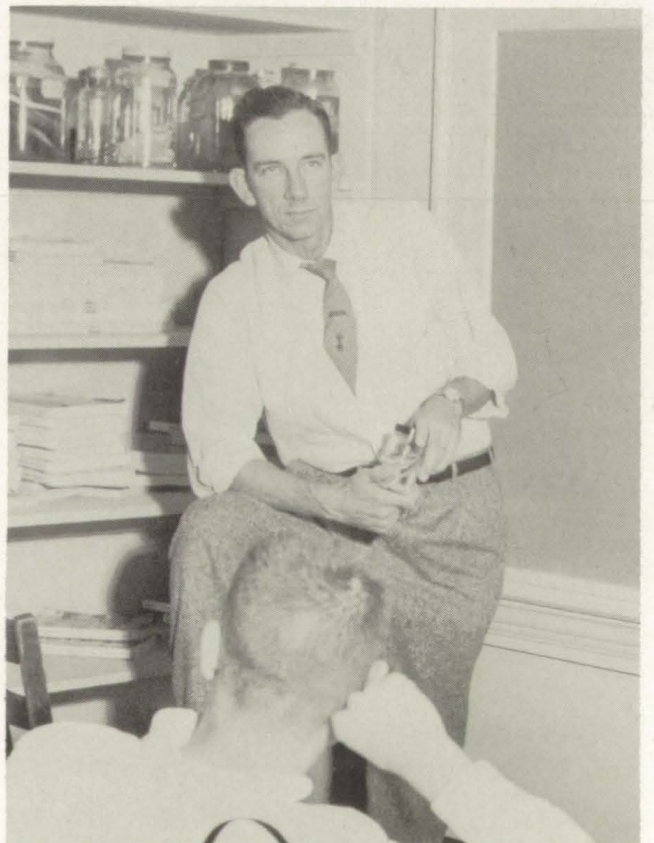
MISS BETTIE McLEMORE
Art



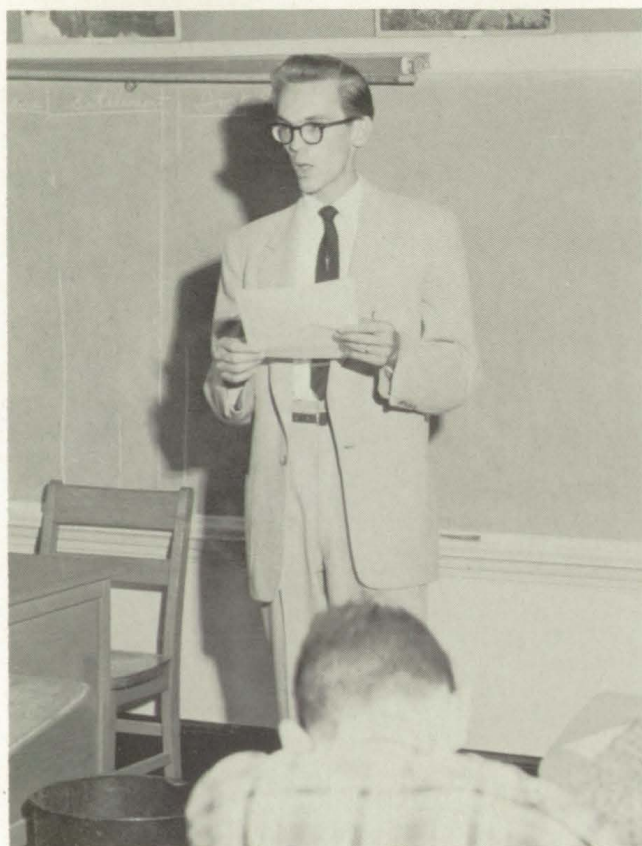
MISS ELEANOR PARADISE
Physical Education



MISS MARY RICHARDS
Commercial



MR. BRAD SANDERSON
Biology



MR. DAVID SCESE
Band



MRS. GWEN SHUFELT
Science, Mathematics



MR. JAMES SMITH
Agriculture



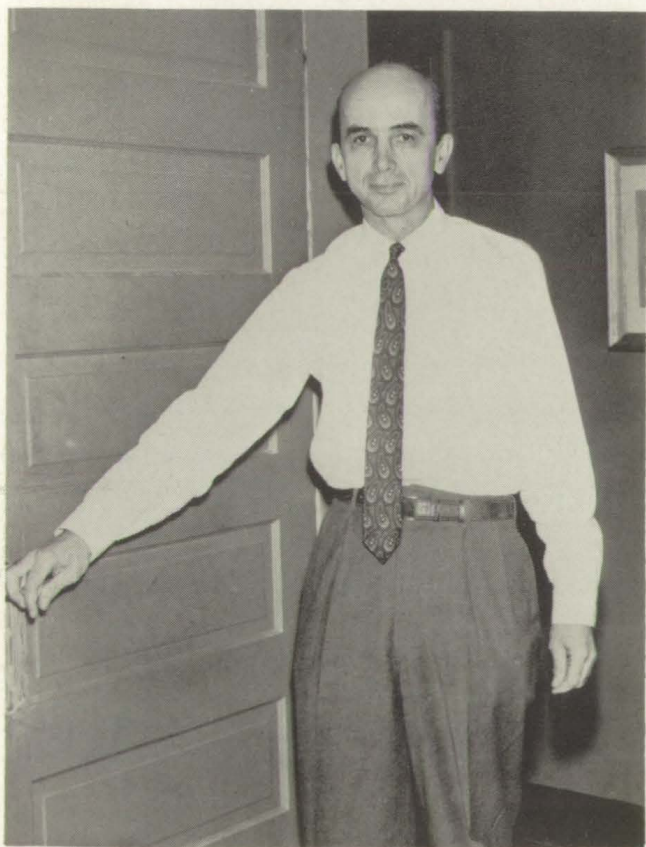
MRS. JOSEPHINE SMITH
Home Economics, Biology



MRS. NITA SMITH
Health



MISS GAIL THOMPSON
English



MR. BEN TRIMBLE
Mathematics



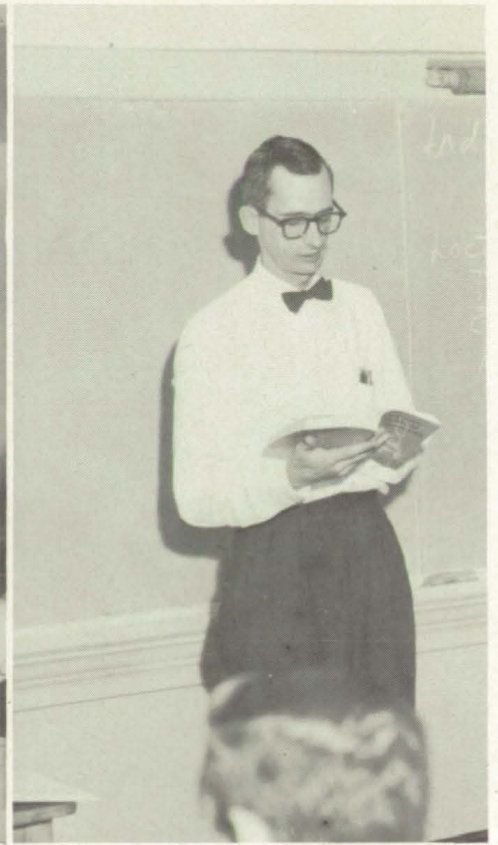
MRS. PETER WILSON
English, Journalism



MISS VIRGINIA WILSON
Librarian



MISS CHRISTINE WOOD
Commercial



MR. LOUIS WUCHET
Social Studies



CAFETERIA STAFF
Mrs. Manning, Mrs. Nunnally,
Mrs. Carruth, Mrs. Hunnicutt.



CLEANING STAFF
Mrs. Abernathy, Miss Webb.



CLEANING STAFF
Mr. Kendrix, Mr. Macripodis,
Mr. Flynn, Mr. Webb.

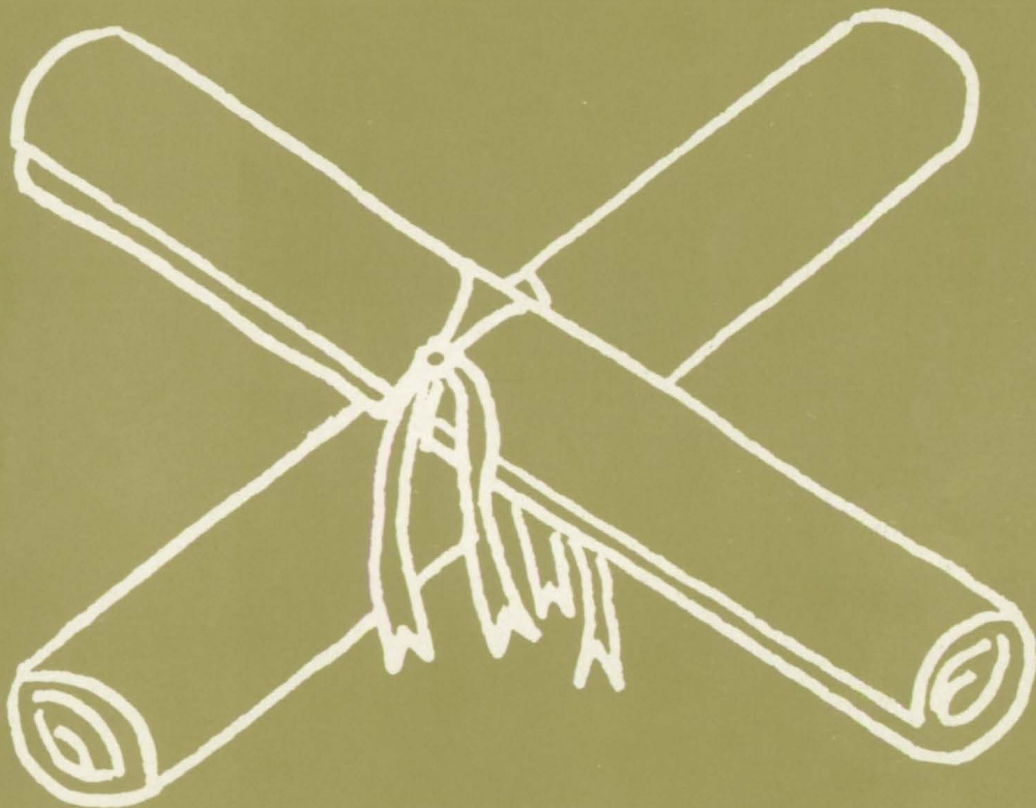
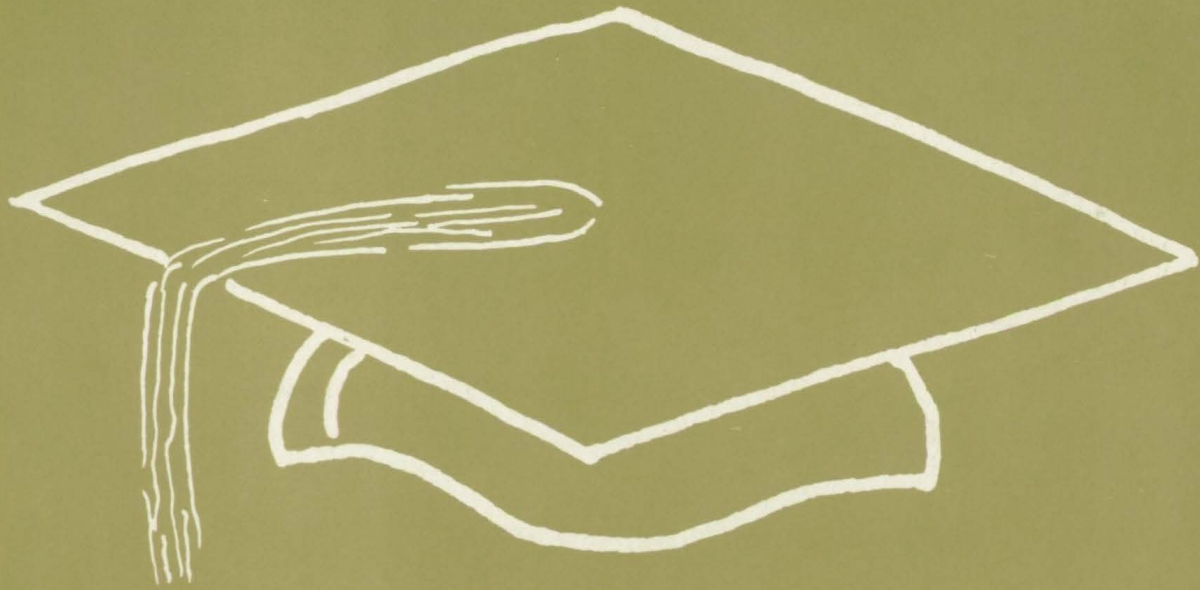


A
R
O
U
N
D



S
C
H
O
O
L





ACT I

Dreams of Achievement

As the curtain rises, those characters who have become stars step confidently forward. Because of their outstanding past performances, they are quickly recognized as SENIORS.



President..... JERRY GRESHAM
Treasurer..... GAIL BURGESS
Secretary..... CAROLYN MEDLIN
Vice-President..... BOBBY COLEMAN
Sergeant-at-Arms..... JIMMY SAMPLES

Seniors 1961



SENIOR SPONSORS

Mrs. Lois Wilson, Miss Bettie McLemore,
Miss Ruby Crawford, Miss Gail Thompson.



MASCOTS

Eddie Knight and Helen Phillips.



PATRICIA ABERNATHY

"Small in stature, but large in merit."

BOBBY ALLEN

"The only way to have a friend is to be one."

LAMAR ALLEN

"Enjoy yourself while you may; tomorrow is another day."

LINDA ANDERSON

"She knows no enemy."



JERRY ANDREWS

"Onward men; if you sight work, turn around and go the other way."

PHYLLIS BAGLEY

"Life without mischief is not life at all."



FRED BALL

"Life must be measured by thought and action."

EVELYN BENNETT

"The thing that costs least and does most is a smile."

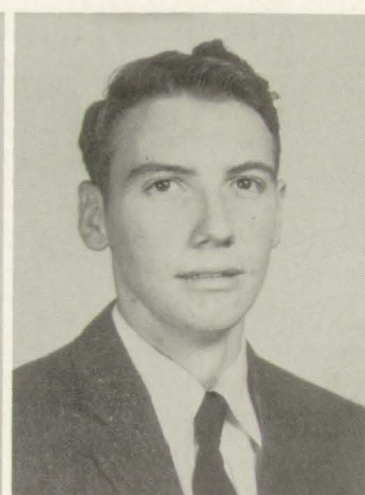


SHIRLEY BLACKWELL

*"One hardly knows she's in class;
yet she does much more than pass."*

BILLY BUICE

*"He looks quite safe and sane, but so
does gun powder."*



GAIL BURGESS

"People are more fun than anybody."

ELLEN BURRISS

*"Innocent yet aware; vivacious yet
thoughtful."*



BETTY BYERS

*"Leave silence to the saints, I am but
human."*

JOAN BYRD

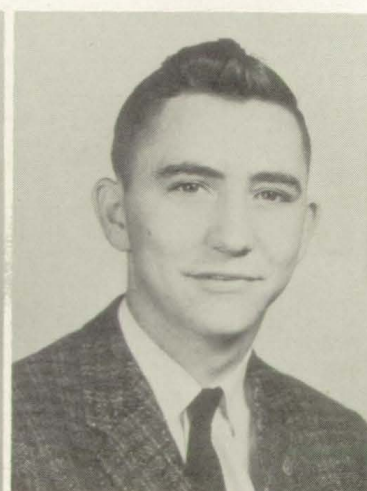
*"The only thing a girl can count
on these days is her fingers."*

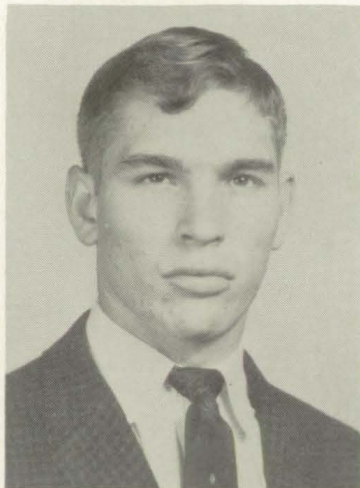
GAIL CAMPBELL

"Patience and gentleness is power."

CECIL CARTER

"Look out, world, here I come!"





JACKIE COCHRAN

"Her heart is like the moon, there is a man in it."

BOBBY COLEMAN

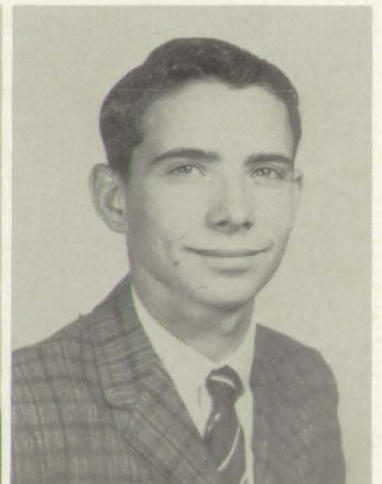
"Life is really simple, but girls insist on making it complicated."

LINTON DANGAR

"Knows everybody, likes everybody, is liked by everybody."

JESSE DAVIS

"Happy go lucky is his trend."



JOHNNY DeVORE

"Every man has his devilish moments."

NEIL DeVORE

"If at first you don't succeed, give up."



LEATRICE DINSMORE

"You must look into people as well as at them."

MARIE DOCKERY

"I know not what the future holds, but I knows who holds the future."

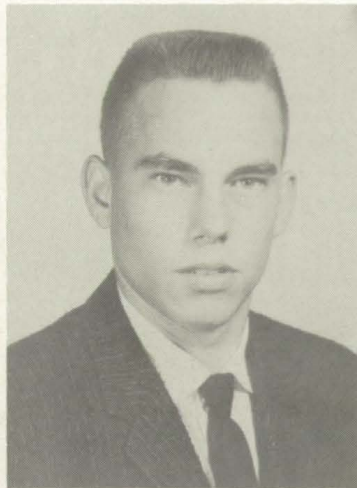
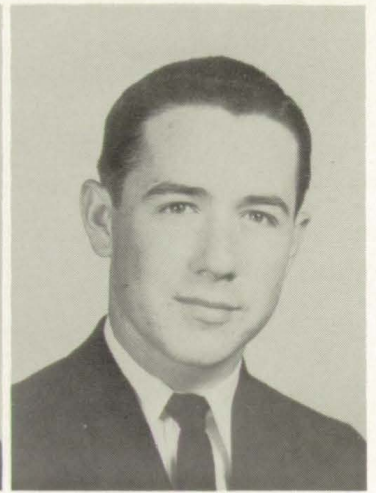


ELIZABETH DORSEY

*"Not too sober, not too gay
just a pal in every way."*

BUTCH ELLIOTT

*"It's not what you do; it's what you get
caught doing."*



BOBBY FLYNN

"Thought is deeper than all speech."

BONNIE FLYNN

*"I was born to walk and talk and walk
and talk I must."*



SANDRA FOSTER

*"Maybe men aren't perfect, but they're
the best opposite sex we've got."*

ROY GANTT

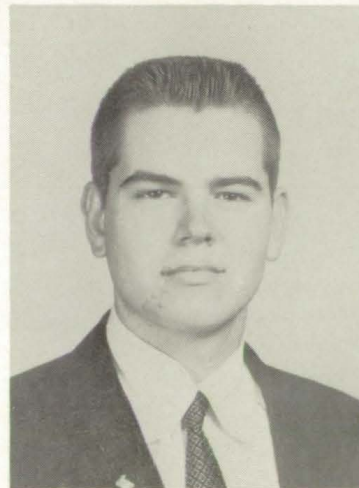
*"It matters not how long you live but
how well."*

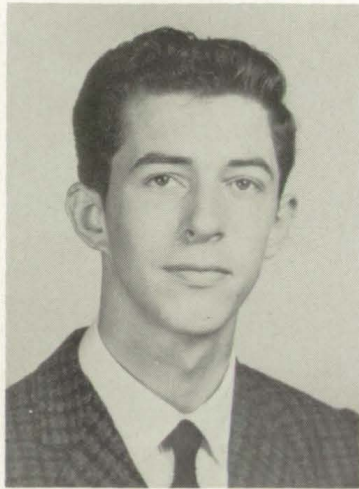
LARRY GARMON

*"Manly in bearing, honest and true;
the world has need of men like you."*

BETTY GREEN

*"Happy, thoughtful, kind and true; there
is no favor she will not do."*





MARTHA JANE GREEN

"Quiet persons are welcome everywhere."

JERRY GRESHAM

"A good natured boy is welcome in any company."

DONALD HAMRICK

"Let others labor I will rest."

ORVIS HANEY

"A man of cheerful yesterdays, and confident tomorrows."



GARY HELTON

"If women interfere with work quit work."

BARBARA HOLCOMBE

"It's also possible for blondes to prefer gentlemen."



TOMMY JOHNSON

"A kind heart, a level head."

WAYNE JONES

"He never exaggerates, he just remembers big."

LINDA JOYNER

"To be jolly, sincere, and an athlete is indeed a combination hard to beat."

FRANKIE KIRBY

"A quiet tongue shows a wise head."

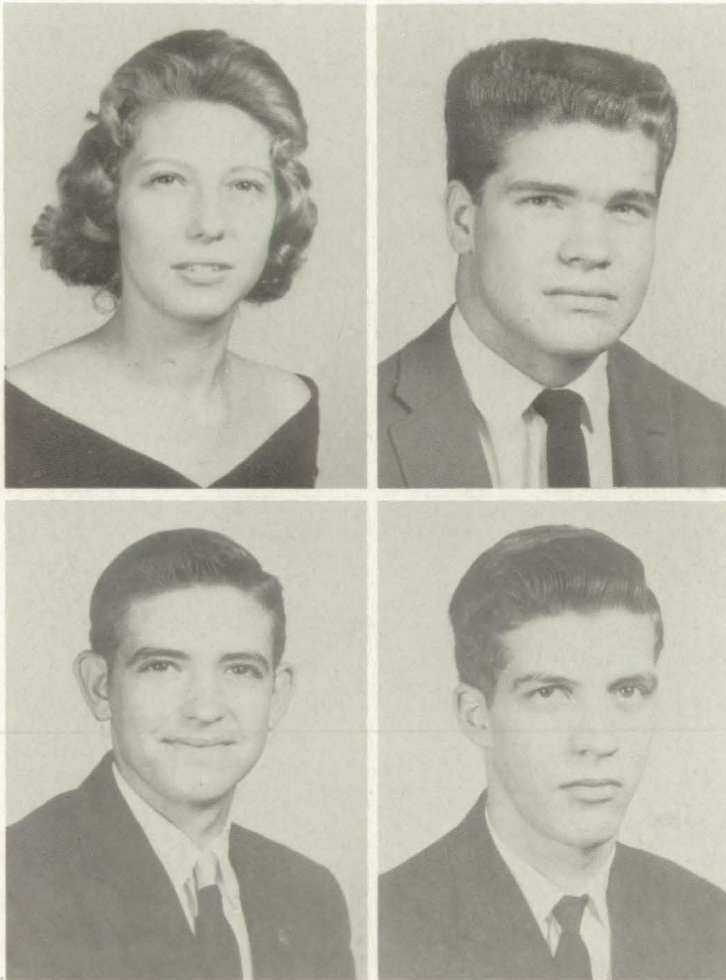


SUE KIRBY

"A pinch of mischief with a lot of friendliness."

PHILIP LINDSEY

"His character, wit and good humor make him known to all."



JERRY MANUS

"Good nature conquers all."

BEN MARTIN

"There is a brain between these two ears, and a man between these two shoulders."

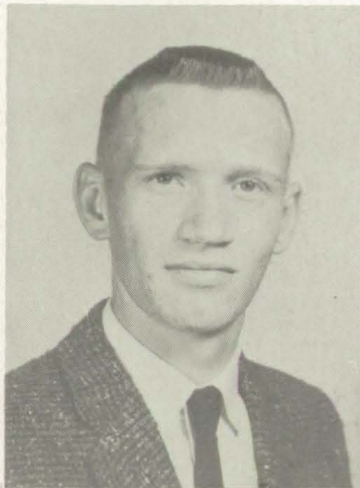
CAROLYN MEDLIN

"A girl with friendly brown eyes and a smile of happiness."

BILLY MOORE

"Drink not too deep of the fountain of knowledge, lest ye strangle."





NITA MOSS

"A light heart lives long."

WAYNE MOSS

"To take things as they be, that's my philosophy."

BRENDA MOSTELLER

"Slender and neat, winsome and sweet."

BARBARA NORTHCUTT

"A sweet disposition, a neat appearance, a host of friends, what else need she want?"

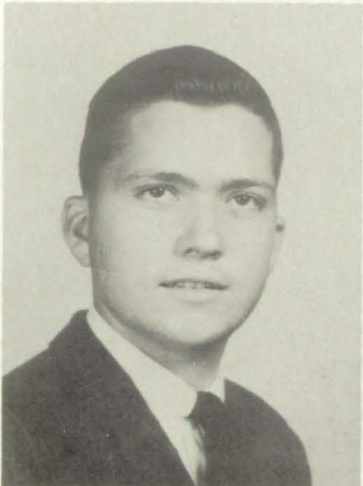


LARRY NUNNALLY

"You're only young once, but once is enough if you work it right."

JERRY PHILLIPS

"Work fascinates me; I could sit down and watch it forever."



JIMMY PHILLIPS

"Doing little things well is a step toward doing big things better."

CLIFFORD PITTS

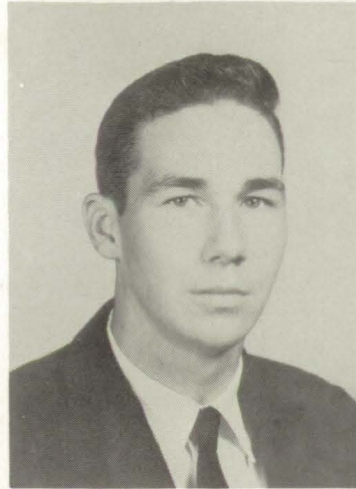
"Contented with little, contented with more."

ALBERT PIRKLE

*"If the stairs to success are crowded,
take the elevator."*

JERRY PONDER

"Live and learn; die and forget it all."



VIRGINIA PORTER

*"A cute scatterbrain with a charming
personality."*

ANN POWELL

*"Life is full of beauty, if you can see it
through an artist's eyes."*



SARAH PRESSLEY

*"Lose as if you like it; win as if you
were used to it."*

JERRY PRUITT

*"Athletic, friendly, and kind, another
like him you'll never find."*

MARJORIE PRUITT

"A deep thinker, a worker, and a friend."

JUDY RAINWATER

*"My interest is in the future because I'm
going to spend the rest of my life there."*





DONNIE RICHARDS

"The girl worthwhile is the girl who can smile."

REX RICHARDS

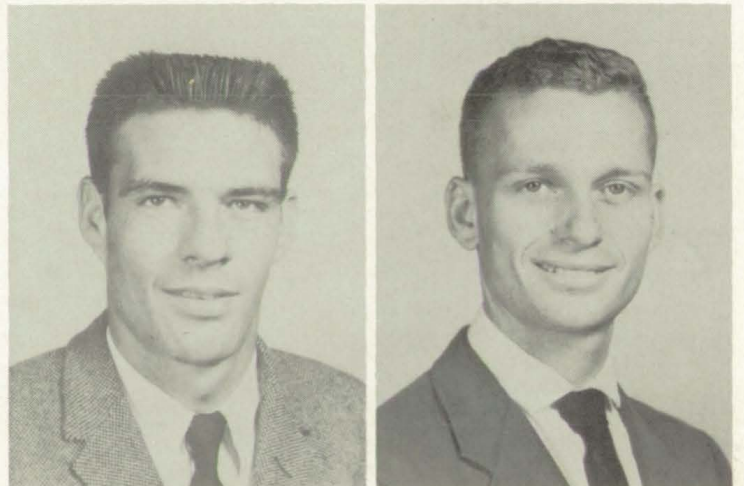
"Plow deep and straight with all your powers."

JIMMY SAMPLES

"He's jolly, he's tall, he's friendly to all."

BUFORD SANDERS

"Give the best that you have and it will come back to you."



LINDA SMITH

"Hope adorns and cheers her way."

JIMMY SPRUELL

"Great men are dying; I feel sick."

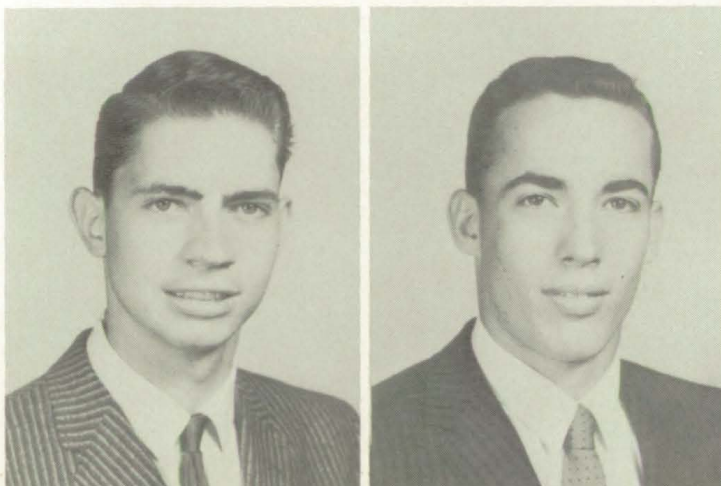


LARRY SPRUELL

"He has no time for girls or fame; a mere diploma is his aim."

PHILLIP STOVER

"The better you know him the better you like him."

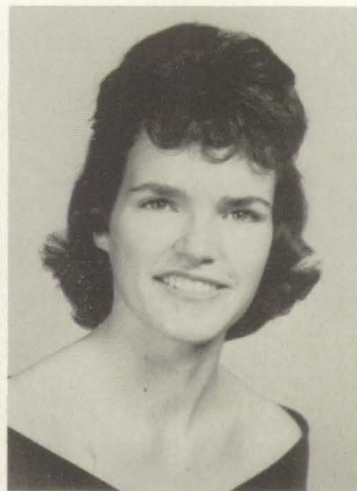
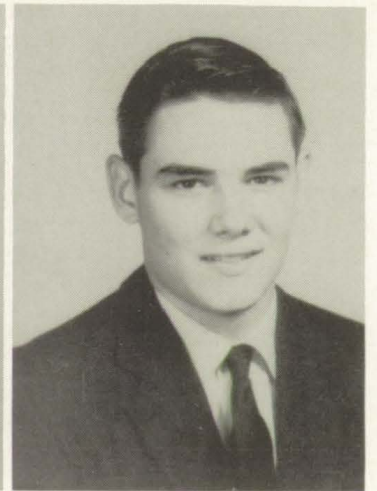


PHYLLIS STOVER

"She is a lovable girl, full of living."

SHIELDS STUTTS

*"Knowledge is the eye of desire and
can become the pilot of the soul."*



PAT TARPLEY

*"A maiden in whose eyes rippling
laughter seems to rise."*

LUCRETIA THACKER

*"A spirit of pertness, gentleness and
and intellignece."*



ELOISE THOMPSON

*"A witty blond who's always gay; with
pleasure she'll fill each day."*

BETTY JO TIMMS

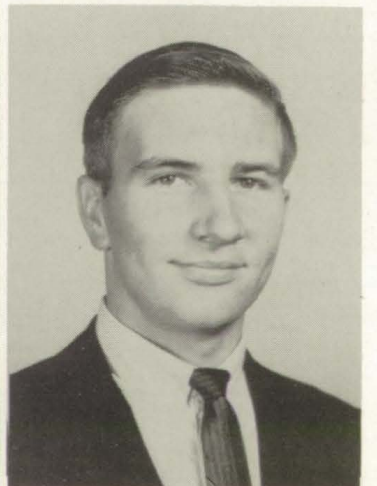
*"The success of perserverance, the joy
of originating."*

RAY VAUGHN

*"He likes to see excitement brewing;
that's why he keeps his teachers
stewing."*

BOBBY VINSON

*"Love many, trust few, and always
paddle your own canoe."*





JIMMY WALKER

"He who from girls does run has much safety but little fun."

RUNELL WALLS

"She's gentle, she's shy, but there is mischief in her eyes."

GARY WESTBROOK

"Today is the tomorrow we worried about yesterday; so why worry, it will happen any way."

DONALD WILSON

"Mischief thou art afoot; take what course thou wilt."



BECKY WINFREY

"Maybe she'll always be the same, changing nothing but her name."

BARBARA SUE WOOD

"A good student, a charming friend."



SARAH YOUNG

"Live and be happy, joyous, and gay, for tomorrow is another day."

LARRY BRUMBELOW

"The way to gain a friend is to be one."

Senior

Babies



Ann



Wayne J.



Skipper



Shields



Linton



Margie



Brenda M.



Gail



Linda S.



Jerry A



Betty G.



Bobby A.



Lamar



Jackie



Tommy



Sarah P.



Billy B.



Phyllis B.



Orvis



Eloise



Virginia



Phil L.



Jerry M.



Ben



Sandra



Fred



Elizabeth



Roy G.



Martha J.



Evenlyn



Larry G.



Frankie



Joan



Carolyn



Linda



Bobby C.



Jimmy S.



Becky



Marie



Runell



Jimmy W.



Gary W.



Phil & Phyllis



Barbara N.



Larry N.



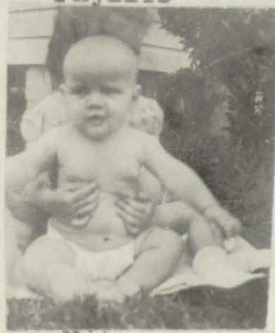
Shirley



Clifford



Ellen



Nita



Jerry G.



Lucretia



Donnie



Johnny



Bonnie



Leatrice



Sue



Barbara H.



Jimmy P.



Gary H.



Larry Spruell



Neil



Cecil



Linda A.



Ray V.



Betty J.



Jerry P.

Gail C.



Wayne M.



Pat A.



Pat T.



Buford



Betty P.



Butch



Donald H.



Sarah Y.

Senior Activities

PATRICIA ABERNATHY

Red Cross 56-57; 4-H Club 56-59; Junior Glee Club 57-58; Music Club 57-61; Girls' Chorus 58-61; Mixed Chorus 58-59; F.H.A. 57-61; *Aerie* Staff 60-61; Homeroom Chairman 60-61.

BOBBY ALLEN

Football 56-60; B-Team Co-Captain 58; Library Club 59-61, Treasurer 59-61; *Aerie* Staff 60-61; 4-H Club 56-60, Secretary 58; Science Club 56-58; Co-President of Student Body 60-61; Thylathean Club 59-60; *School Echoes*, Sports Editor 60-61; Band 58; Red Cross 58.

LAMAR ALLEN

4-H Club 56-57; F.F.A. 56-60, President 60, Treasurer 61, F.F.A. State Convention 59, State Leadership Conference 60, Rally at Macon 59-60; Track 59-60.

LINDA ANDERSON

4-H Club 57-61, Song Leader 59, Vice-President 60-61; Red Cross 59; Mixed Chorus 61; Girls' Chorus 61; *Aerie* Staff 61.

JERRY ANDREWS

4-H Club 56-57; Band 56-61, President 61, Drum Major 59-61; Science Club 56-58; Track 58-59.

PHYLLIS BAGLEY

Transferred in 58; Science Club 59-60; Red Cross 59-60; *Aerie* Staff 60-61.

FRED BALL

Library Club 58-61, Secretary 60-61; B-Team Football 58-59; B-Team Basketball 58-59; Varsity Football 59-61; Track 58-61; *Aerie* Staff 60-61; Senior Superlative 60-61.

EVELYN BENNETT

Aerie Staff 60-61; 4-H Club 57-58; F.H.A. 57-59; Glee Club 58-61; Girls' Chorus 60-61; Music Club 60-61; Science Club 58-60.

SHIRLEY BLACKWELL

Transferred in 59; Beta Club 60-61; Honor Roll 58-61; Office Work 60-61; \$30 Curtis Sales Club 60-61; Senior Superlative 60-61.

LARRY BRUMBELOW

F.F.A. 59-61; Band 60-61; Football 57-59.

BILLY BUICE

Library Club 59-61.

GAIL BURGESS

Red Cross 56-57; Student Council 60-61; Science Club 59; Beta Club 59-61; Honor Roll 59; *School Echoes*, Exchange Editor 60-61; Treasurer of Senior Class 60-61; Band 58-61, State Honor 60; Quill and Scroll 60-61; Curtis \$100 Club.

ELLEN BURRISS

Science Club 56-59; F.H.A. 56-61; Basketball 58-61; Beta Club 59-61; *Aerie* Staff 59-61, Co-Editor Sports 60-61; Quill and Scroll 60-61.

BETTY BYERS

Girls' Chorus 60-61.

JOAN BYRD

4-H Club 56-61; F.H.A. 57-61, Council 60-61, Committee Chairman 60-61; *Aerie* Staff 60-61; Red Cross 58-60.

GAIL CAMPBELL

Science Club 59-60; 4-H Club 60-61.

JACKIE COCHRAN

"Friendly Day" Award 56-57; Eight Grade Homeroom Vice-President 56-57; Tenth Grade Homeroom President 58-59; 4-H Club 56-58; Junior Mixed Chorus, Vice-President 57-58, Music Festival 59, Soloist 59; Cheerleading Candidate 59. Junior Play 59-60; *Aerie* Staff, Ad Staff 59-60, Circulation Staff 60-61.

BOBBY COLEMAN

F.F.A. 56-57; 4-H Club 56-58; Science Club 56-59; B-Team Football 56-58; *Aerie* Staff 59-61; Varsity Football 59-61; Track 59-61; Senior Class Vice-President 60-61; Student Council 60-61; Senior Superlative 60-61; Curtis \$100 Club 60-61.

Senior Activities

LINTON DANGAR

F.F.A. 56-57; 4-H Club 56-61, Secretary 57-58, Reporter 58-59, Won Trip to Chicago 59-60, Vice-President 60-61; Science Club 56-59; Red Cross 57-58; Homeroom President 57-58; B-Team Basketball 58-59; Beta Club 58-59; Thrift Forum 58-59; Boys' State 59-60; Mr. Courtesy 59-60; Homeroom President 59-60; Varsity Basketball 59-60; Varsity Football 60-61; Leadership Conference 60-61; *Aerie* Staff 60-61; Senior Superlative 60-61.

JOHNNY DEVORE

Baseball 57-61; Basketball B-Team 57-59, Varsity 59-61; Glee Club 58-61; Boys' Chorus 58-59; Small Ensemble 60-61; F.F.A. 57-58; Science Club 57-59; *Aerie* Staff 60-61.

NEIL DEVORE

Band 58-60, Vice-President 59; Track 58-61, County Track 59; B-Team Basketball 58-59; 4-H Club 58-59; Science Club 58-59; Freshman Superlative 56-57.

LEATRICE DINSMORE

MARIE DOCKERY

4-H Club 56-59; F.H.A. 57-58; Quill and Scroll 60-61; *School Echoes*, Business Manager 60-61; Curtis \$30 Club 60-61.

ELIZABETH ANN DORSEY

4-H Club 56-59; F.H.A. 57-61; Science Club 58-59; Regional Choral Music Festival 59-60; Girls' Chorus 50-60; Mixed Chorus 59-60; Music Club 58-59; Red Cross 60-61; Office Work 60-61; Curtis \$100 Club 60-61.

BUTCH ELLIOTT

Football 56-61; Basketball 56-58; Track 57-61; 4-H Club 56-59; Music Club 57-58; Student Council 57-59; Science Club 56-60; Freshman Vice-President 57-58; Red Cross 58-59.

BOBBY FLYNN

BONNIE FLYNN

Fashion Show 57; Basketball Manager 56-57; 4-H Club 57-59; Science Club 58-60; Varsity Basketball 58-59; F.H.A. 57-61, Treasurer 60-61; Homeroom Vice-President 59-60; *Aerie* Staff, Activities Co-Editor 60-61; Candidate for Homecoming Queen 59-60; Curtis \$100 Club 60-61; Senior Superlative 60-61.

SANDRA FOSTER

4-H Club 57-58; F.H.A. 58-59; Girls' Chorus 58-61; Science Club 59-60; Music Club 60-61; *Aerie* Staff 60-61.

ROY GANTT

LARRY GARMON

4-H Club 56-58; Library Staff 57-60; Treasurer 57-58, Vice-President 58-59, President 59-60; Beta Club President 60-61; Quill and Scroll 59-61; *School Echoes* Editor; *Aerie* Staff 59-61; Honor Roll 58-60.

BETTY GREEN

F.T.A., Treasurer 59-60; Beta Club 59-61; *Aerie* Staff, Circulation Staff 59-60, Business Manager 60-61; Quill and Scroll 60-61; *School Echoes*, Make-Up Editor 60-61; Homeroom Vice-President 56-57; Science Club 57-59; Junior Play 59-60; Honor Roll 58-59; GSPA and ASPA 60-61.

MARTHA JANE GREEN

JERRY GRESHAM

Band 56-57; Red Cross 57-58; Student Council, Reporter 60-61; Quill and Scroll, Chairman 60-61; Junior Play 59-60; *Aerie* Art Co-Editor 60-61; Senior Class President 60-61; Senior Superlative 60-61.

DONALD HAMRICK

ORVIS HANEY

Sub-Freshman Superlative 56-57; Red Cross 56-57; Band 56-57.

Senior Activities

GARY HELTON

Science Club 58; Football Manager 57-61; Track Manager 59; Band 58-61.

BARBARA HOLCOMBE

Homeroom Secretary-Treasurer 56-57; 4-H Club 56-58, Secretary 56-57; Homeroom Vice-President 57-58; F.H.A. 57-58; Band 56-61, Secretary-Treasurer 60-61; Majorette, Co-Captain 60-61.

TOMMY JOHNSON

Transferred in 60.

WAYNE JONES

Transferred in 58; Football 59-61; *Aerie* Staff 59-60.

LINDA JOYNER

4-H Club 56-61, Song Leader 58-59, Reporter 59-60; F.H.A. 56-61; *Aerie* Staff, Sports 59-60, Activities Co-Editor 60-61; Quill and Scroll 60-61; *School Echoes* 60-61; Basketball 58-61; Basketball 58-61; Science Club 56-58.

FRANKIE KIRBY

Transferred in 58; Science Club 58-59; *Aerie* Staff 60-61; Cheerleading Candidate 59.

SUE KIRBY

F.H.A. 56-61; 4-H Club 56-60; Science Club 56-58; *Aerie* Staff 60-61.

PHIL LINDSEY

Transferred in 58; F.F.A. 58-60; Varsity Football 58-61; Track 59-61; 4-H Club 59-61; Music Club 58; Science Club 59; Red Cross 58; Senior Superlative 60-61.

JERRY MANUS

4-H Club 56-58; F.F.A. 58-61, Reporter 59-60, President 60-61, 31st Annual F.F.A. Convention, F.F.A. Leadership conference 60, Georgia Leadership Member.

BEN MARTIN

Glee Club 57-61; Red Cross 57-60; Science Club 56-59; B-Team Basketball 56-58; All State Chorus 59-61; Music Club 57-58; Music Reading Clinic 59-60.

CAROLYN MEDLIN

4-H Club 56-58; Science Club 58; Library Club, Historian 57-58; F.H.A. 58-61, President 60-61; Beta Club 59-61, Secretary 60-61; Student Council 60-61; Secretary of Senior Class 60-61; Senior Superlative 60-61; Honor Roll 59; Mixed Chorus 60-61; Candidate for Homecoming Queen 60-61.

BILLY MOORE

Band 56-58; Football 57-61; Track 57-61; B-Team Basketball 57-58; *Aerie* Staff 60-61; 4-H Club 56-58; Science Club 57-59; Red Cross 57-58.

JAUNITA MOSS

4-H Club 60-61; *Aerie* Staff 60-61; Science Club 58-59; 2nd Prize Winner in Essay Contest 59-60; Talent Show 57.

WAYNE MOSS

BRENDA MOSTELLER

Red Cross 56-57; 4-H Club 56-57; Cheerleader 58-60, Captain 59-60; Science Club 58-59; Beta Club 59-61; Student Council 59-61, Treasurer 59; Co-President of Student Body 60-61; Class Vice-President 58-60; Delegate to Student Council Workshop 58-59; 1st Prize Winner of Soil and Water Conservation Essay 59-60; *Aerie* Staff, Features 59-60; Co-Editor 60-61; Senior Superlative 60-61; Freshman Superlative 58; Quill and Scroll 59-61; Delegate to Beta Club Convention 59-60; Junior Play 59-60. Homecoming Court 60-61;

BARBARA NORTHCUTT

F.H.A. 57-58; 4-H Club 57-61; Science Club 58-59; Red Cross, Treasurer 59-61; Library Staff 58-59; Cheerleader 60-61; *Aerie* Staff 59-61, Class Co-Editor 60-61.

Senior Activities

LARRY NUNNALLY

F.F.A. 56-57; 4-H Club 56-58; Band 59-61, Vice-President 60-61.

JERRY PHILLIPS

JIMMY PHILLIPS

F.F.A. 56-57; Science Club 58-60; Library Club 58-59; *Aerie* Staff 59-61; Band 60-61.

ALBERT PIRKLE

Science Club 57-58; Band 57-59; 4-H Club 57-58; B-Team Football 57-59; Red Cross 57-58; B-Team Basketball 57-59; Varsity Basketball 59-61; Music Club 57-58.

CLIFFORD PITTS

4-H Club 56-61, Secretary-Treasurer 57-58; B-Team Football 56-57; Track 57-58; Track Manager 59-60; Homeroom Secretary-Treasurer 58-59; *Aerie* Staff 60-61; Football Manager 60-61.

JERRY PONDER

4-H Club 55-61; F.F.A. 55-61; Sentinel 59-60; Track 56-57.

VIRGINIA PORTER

Homeroom President 56-58; Science Club 57-60; F.H.A. 57-58; Class President 57-60; Student Council 57-60; Basketball 57-58; Cheerleader 58-61, Captain 60-61; "Miss Forestry" Contestant 60-61; *School Echoes*, Circulation Manager 60-61; Circulation Manager 60-61; *Aerie* Staff 60-61; Quill and Scroll 60-61.

ANN POWELL

4-H Club 56-57; Science Club 58-59; Girls' State 60; *School Echoes*, Art Editor 60-61; Cheerleader 57-59; *Aerie* Staff, Features 59-60, Feature Editor 60-61, Art Co-Editor 60-61; Candidate for Homecoming Queen 59-60; Quill and Scroll 60-61.

SARAH PRESSLEY

Transferred in 57; Basketball 58-61, Captain 60-61; F.H.A. 58-61, Secretary 60-61; Softball 58-59; 4-H Club 58; Junior Glee Club 58; Girls' Chorus 59; *Aerie* Staff 60-61; Senior Superlative 60-61

JERRY PRUITT

B-Team Football 56-58; Varsity Football 58-61; Track 58-61.

MARJORIE PRUITT

Sub-Freshman Superlative 57; Cheerleader 57-60, Co-Captain 59-60; Class Officer 57-60; Student Council 57-60; Beta Club 59-61; *Aerie* Staff, Circulation Manager 59-60, Co-Editor 60-61; Candidate for Co-President 60; Science Club 57-58; Assistant Editor of *School Echoes* 60-61; Quill and Scroll 59-61; 2nd Vice-President of GSPA 60-61; Curtis \$100 Club; Band 57-58; Senior Superlative 60-61; Delegate to Sigma Delta Chi Journalism Banquet 60-61; Candidate for Homecoming Queen 60-61; Honor Roll 57-61; 2nd Place Winner in American Legion Oratorical Contest; Junior-Senior Co-Chairman 59-60; Girls' State 60; Junior Play 60.

JUDY RAINWATER

Music Club 56-61; F.T.A. 58-59; *Aerie* Staff 60-61.

DONNIE RICHARDS

Transferred in 59; Beta Club 59; 4-H Club 57; F.H.A. 57-60

REX RICHARDS

4-H Club 57-58; F.F.A. 57-61, Vice-President 60-61; Basketball 58-61.

JIMMY SAMPLES

4-H Club 55-56; Football 55-61; Track 59-60; Student Council 60-61; Sergeant at Arms 60-61.

BUFORD SANDERS

Red Cross 56-57; 4-H Club 56-59; Music Club 59-61; Quill and Scroll 60-61; Varsity Football 60-61; Essay Contest Winner 60; *School Echoes*, News Editor 60-61; *Aerie* Staff 60-61.

LINDA SMITH

Junior Mixed Chorus 57-58; F.H.A. 56-57; Basketball 59-60; Quill and Scroll 60-61; *Aerie* Staff 60-61; *School Echoes* 60-61; Office Work 60-61; Curtis \$30 Club 60-61; Softball 58-59.

Senior Activities

JIMMY SPRUELL

B-Team Football 56-58, Co-Captain 58; Varsity Football 59; Homeroom President 57-58; F.F.A. 56-61, State F.F.A. Convention 60; 4-H Club 56-61.

LARRY SPRUELL

F.F.A. 56-57; Library Club 57-60; Beta Club 58-61; Quill and Scroll 59-61; *Aerie* Staff 59-61; Junior Play 59-60; *School Echoes* 60-61; Honor Roll 58-59.

PHILLIP STOVER

4-H Club 56-61, President 59-61, Grand Champion Steer, Fulton County Winner at Georgia Fat Cattle Show; F.F.A. 56-61; Baseball 57-61; Red Cross 57-59.

PHYLLIS STOVER

Red Cross 57; 4-H Club 58; F.H.A. 57-61; *Aerie* Staff 60-61; Senior Superlative; Homecoming Queen 60-61.

SHIELDS STUTTS

Sub-Freshman President 56-57; B-Team Football 56-57; B-Team Basketball 56-58; Varsity Football 59-61; Varsity Basketball 58-61; Track 58-61; Science Club 56-60; Beta Club 59-61, Vice-President 59, Delegate to Beta Club Convention 59-60; Delegate to Thrift Conference 59; Candidate for Co-President 59-60; *Aerie* Staff, Photographer 57-58, Sports Staff 58-59, Sports Editor 60-61; Lab Assistant 60-61; Science Camp Alternate; Senior Superlative 60-61; Quill and Scroll 60-61; Honor Roll 56-60.

PATRICIA TARPLEY

Science Club 57-60; 4-H Club 57-60; F.T.A. Treasurer 59, Vice-President 60, President 61; Quill and Scroll 60-61; *School Echoes* 60-61; GSPA and ASPA 61; Homeroom Vice-President 60; Library Staff 58-60; SLA and GALA 58-60; Homeroom Treasurer 58.

LUCRETIA THACKER

Science Club 56-59; F.H.A. 56-61, Vice-President 59-60, Program Chairman 60-61; Beta Club 59-61, Reporter 60-61; Honor Roll 58; Delegate to Thrift Forum 58.

ELOISE THOMPSON

F.H.A. 56-61; Homeroom Secretary 56-57; 4-H Club 56-61, Delegate to District Achievement 56-58, State Achievement Winner 58; Science Club 56-60; Library Staff, Program Chairman 57-58; SLA and GALA 57-58; Honor Roll 56-58; F.T.A. 58-59; *Aerie* Staff, Co-Editor Classes 60-61; *School Echoes*, Alumni Editor 60-61; GSPA and ASPA 60-61; Curtis \$100 Club 60-61; Curtis Watch Award 60-61.

BETTY JO TIMMS

Band 57-61, Secretary-Treasurer 58-60; F.H.A. 57-61; Beta Club 59-60; Softball 57-59; Homeroom Vice-President 57-59; Science Club 56-57.

RAY VAUGHAN

Band 57-58; 4-H Club 56-58; Science Club 57-58; Red Cross 57-58; Music Club 57-58.

BOBBY VINSON

Transferred in 58; Science Club 57-60; Band 57-61, President 59-60; *Aerie* Staff 60-61; *School Echoes* 60-61; B-Team Football 57-58; Red Cross 60-61.

JIMMY WALKER

4-H Club 55-56; F.F.A. 56-60; *Aerie* Staff 60-61; Football 59-61.

GARY WESTBROOKS

DONALD WILSON

4-H Club 57-58; Mixed Chorus 58-61; Boys' Chorus 59; All State Chorus 59-61; Science Club 57-59; Music Club 57-58.

BECKY WINFREY

Junior Mixed Chorus 58-59; Mixed Chorus 59-60; Girls' Chorus 60-61; *Aerie* Staff 60-61; Candidate for Homecoming Queen 60-61; Music Festival 59-60; Senior Superlative 60-61.

BARBARA SUE WOOD

4-H Club 56-58; F.T.A. 58-60, Secretary 59-60; Beta Club 59-61; Quill and Scroll 60-61; Honor Roll 57-61; *School Echoes* 60-61.

Senior Activities

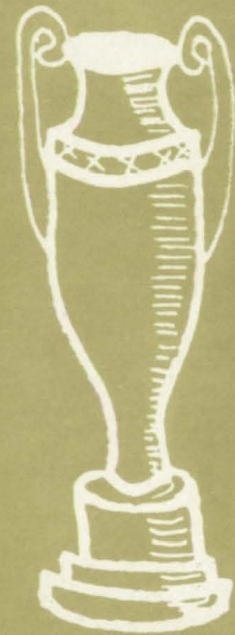
SARAH YOUNG
Science Club 59-60.



We're proud of our \$100 Curtis pins!



The pause that refreshes!



ACT II

Dreams of Recognition

A quiet hush falls on the audience as the spotlight focuses on characters acclaimed by others as FEATURES of the drama.



Best All-Around

BRENDA MOSTELLER and BOBBY ALLEN



Most Dependable

MARJORIE PRUITT and JERRY GRESHAM



Most Intellectual

SHIRLEY BLACKWELL and SHIELDS STUTTS



Most Popular

VIRGINIA PORTER and FRED BALL





Friendliest

CAROLYN MEDLIN, BECKY WINFREY
and JIMMY WALKER



Cutest

PHYLLIS STOVER and LINTON DANGAR



Most Athletic

SARAH PRESSLEY and BOBBY COLEMAN



Wittiest

BONNIE FLYNN and PHIL LINDSEY







Homecoming Queen

MISS PHYLLIS STOVER, "Cutest" Girl of the Senior Class, was chosen 1960-61 Milton Homecoming Queen by the Varsity Football Team.

Well she deserves this title for certainly she has the poise, beauty, and friendliness of a reigning Queen.

Court

Her COURT included -

Carolyn Medlin, *escorted by* Jimmy Samples;

Brenda Mosteller, *escorted by* Billy Moore;

Marjorie Pruitt, *escorted by* Bobby Coleman;

Becky Winfrey, *escorted by* Fred Ball.

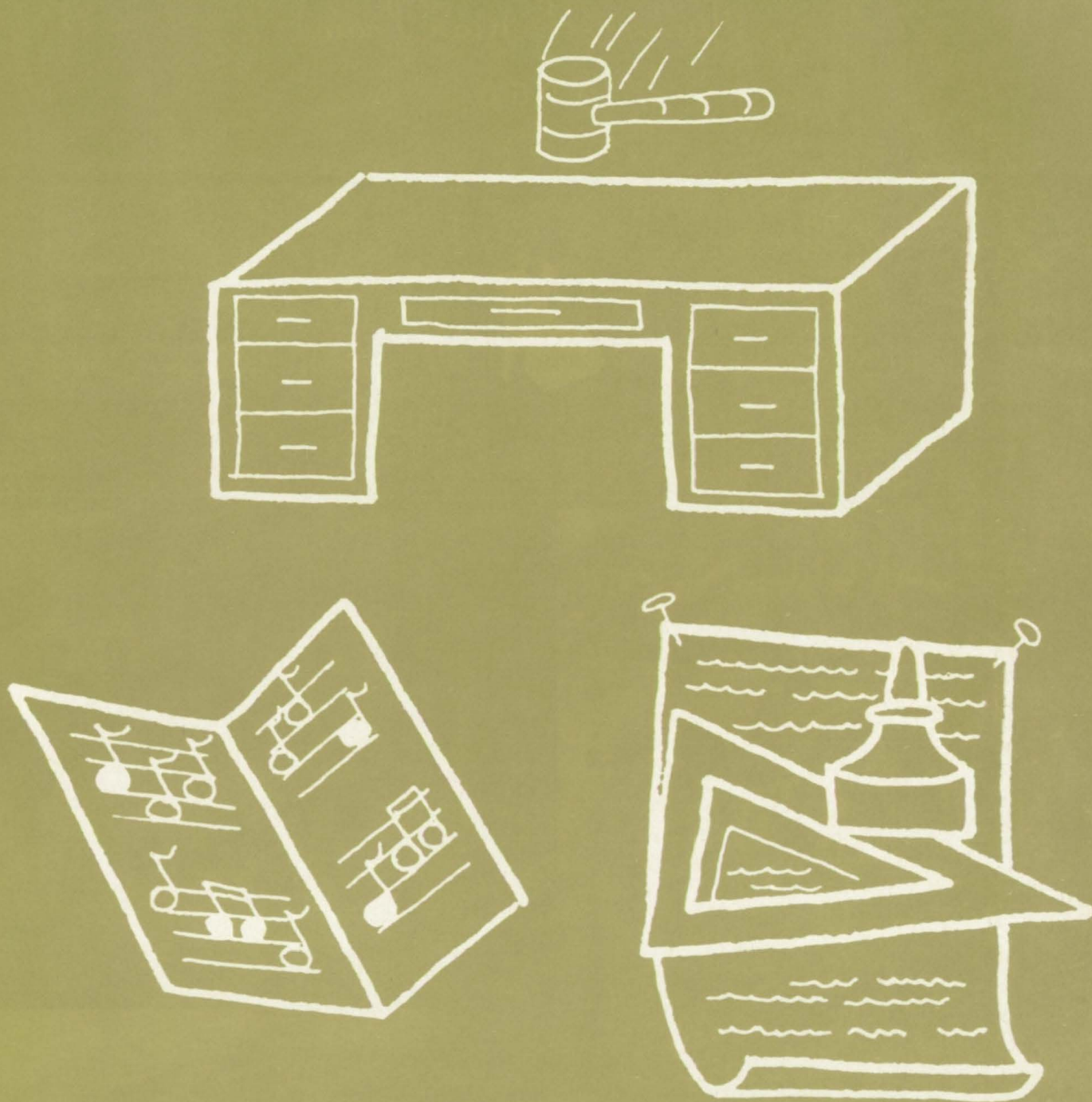
The QUEEN was *escorted by* Butch Elliott.



Junior - Senior Prom

1960





ACT III

Dreams of Belongingness and Service

The plot thickens, leaders emerge, budding stars forget their stage fright as they lost themselves in CLUBS and ACTIVITIES.



MISS GAIL THOMPSON, MR. CLAYTON HAWKINS,
SPONSORS



MARJORIE PRUITT, BRENDA MOSTELLER,
CO-EDITORS

Planning, anxiety, and hard work were all necessary in order to produce a yearbook, which we hope will help to preserve the wonderful memories of life at MILTON in 1961.

Aerie



ANN POWELL, JERRY GRESHAM, ARTISTS



AD STAFF — Betty Green, *Business Manager*;
Sally Fleck, Selina Stewart, Donnie Richards,
Phyllis Bagley, Linda Anderson, Jimmy Phillips,
Cecil Carter, Buford Sanders, Larry Spruill,
Linton Dangar.



ACTIVITIES — Beverly Abercrombie, Andrea Chatham, *Co-Editors*: Bonnie Flynn, Linda Joyner, Sissie Vinson, Bobby Vinson, Bobby Allen.



SPORTS — Bobby Coleman, Fred Ball, Kit Hansard, Johnny Devore, Sara Pressley, *Co-Editors*: Ellen Burriss, Shields Stutts.

Staff

FEATURES — Ann Powell, *Editor*; Evelyn Bennett, Joan Byrd, Virginia Porter, Sandra Foster, Phyllis Stover, Imogene Potts.



CIRCULATION — Judy Rainwater, Elizabeth Day, Linda Smith, Gloria Hunnicutt, *Editor*; Larry Garmon, Frankie Kirby, Jackie Cochran, Becky Winfrey, Pat Abernathy.

CLASSES — Barbara Northcutt, Eloise Thompson, *Co-Editors*; Pat Tarpley, Carolyn Medlin, Pat Anderson, Nita Moss, Lucretia Thacker, Sue Kirby, Brenda Phillips.





Beta Club

The NATIONAL BETA CLUB is the only active honorary organization on the Milton campus. It has as its main purposes to help teachers and students achieve the end and aim of all true education --- mental enlargement and character development --- and to encourage and reward creditable achievement.

President..... LARRY GARMON
 Vice-President..... TED WALKER
 Secretary..... CAROLYN MEDLIN
 Treasurer..... BRENDA MOSTELLER
 Reporter..... LUCRETIA THACKER



Student Council

The STUDENT COUNCIL purposes are: To promote better school spirit, to create a greater sense of responsibility and cooperation among the students, and to establish student government.



Co-Presidents..... BRENDA MOSTELLER, BOBBY ALLEN
 Secretary..... JUDY McFARLIN
 Reporter..... JERRY GRESHAM
 Sponsor..... MRS. GWEN SHUFELT

Library Club

The LIBRARY CLUB is an organization of students who desire to work together to make the Library a more attractive and useful place.

The Staff's main objectives are to improve the Library and to help other students. It provides valuable experience for students and renders a valuable service to the school.



President..... NORMAN GRANT
 Vice-President..... JUDY SCALES
 Secretary..... FRED BALL
 Treasurer..... BOBBY ALLEN
 Sponsor..... MISS VIRGINIA WILSON
 Library Assistant..... MRS. FAY GRIMES



Music Club

The MILTON MUSIC CLUB was organized in 1930, by Mrs. C.E. Maddox.

The purpose of the club is to study the lives and compositions of the great composers and to raise the standard of music appreciation in our school and community. The club's motto is, "Music is the universal language of mankind."



President..... BEVERLY ABERCROMBIE
 Vice-President..... ANN BURGESS
 Second Vice-President..... SANDRA HENDERSON
 Secretary..... SUSAN MANNING
 Sponsor..... MRS. BLANCHE MADDOX



Mixed Chorus



Small Ensemble



Eight Grade

Chorus

Girls'
Ensemble



Girls'

Chorus



Sponsor.....MRS. LOIS WILSON
 Editor.....LARRY GARMON
 Assistant Editor..... MARJORIE PRUITT



School Echoes

The SCHOOL ECHOES appears twelve times a year on the MHS campus and interests students with its variety of sports, news, and human interest events.

The Staff consists of selected members of the Senior Class who take a course in Journalism.



ELOISE THOMPSON, VIRGINIA PORTER,
 MARIE DOCKERY.



ANN POWELL, LINDA JOYNER,
 BETTY GREEN.



BOBBY ALLEN, BUFORD SANDERS,
LARRY SPRUELL.



PATRICIA TARPLEY, LINDA SMITH,
BARBARA SUE WOOD, BOBBY VINSON.



Senior Representative..... JERRY GRESHAM

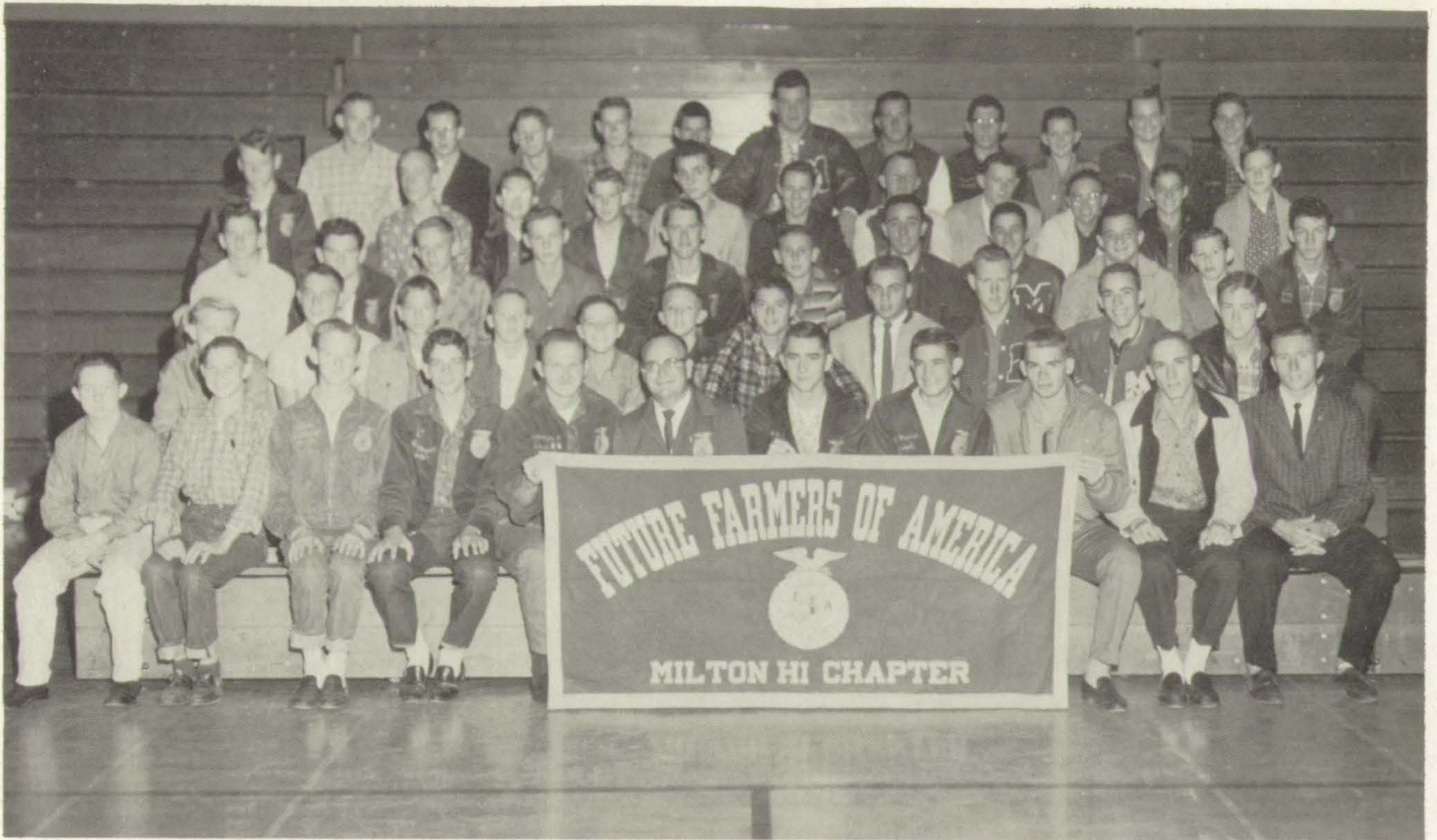
Junior Representative..... BRENDA PHILLIPS

Quill and Scroll

The QUILL and SCROLL is the International Society for High School Journalist and is an honorary society for all Juniors and Seniors in the upper one-third of the class, who have done some outstanding work in the field of Journalism.



International Honorary Society for High School Journalists



Sponsor.....MR. JAMES SMITH

President..... JERRY MANUS

Secretary..... JERRY PONDER

Vice-President.....REX RICHARD

Reporter.....BOBBY BRYANT

F. F. A.



The aim and object of the FUTURE FARMERS OF AMERICA organization is to help a farm boy help himself. Through participating in the activities carried on by the local, state, and national organization, it is expected that a member will learn more about farming, develop his own capacities, cultivate an interest in his community, and get a complete understanding of those national problems which involve the business of farming.





Sponsor.....MRS. DICKERSON

President.....CAROLYN MEDLIN

Secretary..... SARAH PRESSLEY

Vice-President.....ELLEN BURRISS

Treasurer..... BONNIE FLYNN

F. H. A.

The purposes of the FUTURE HOMEMAKERS OF AMERICA are to encourage democracy in home and community life, to give appreciation to homemaking, and to further interest in Home Economics.





President..... DIANNE HOLBROOKS
 Vice-President..... LINDA ANDERSON

Secretary-Treasurer..... JUDY DANGAR
 Sponsor..... MRS. SMITH

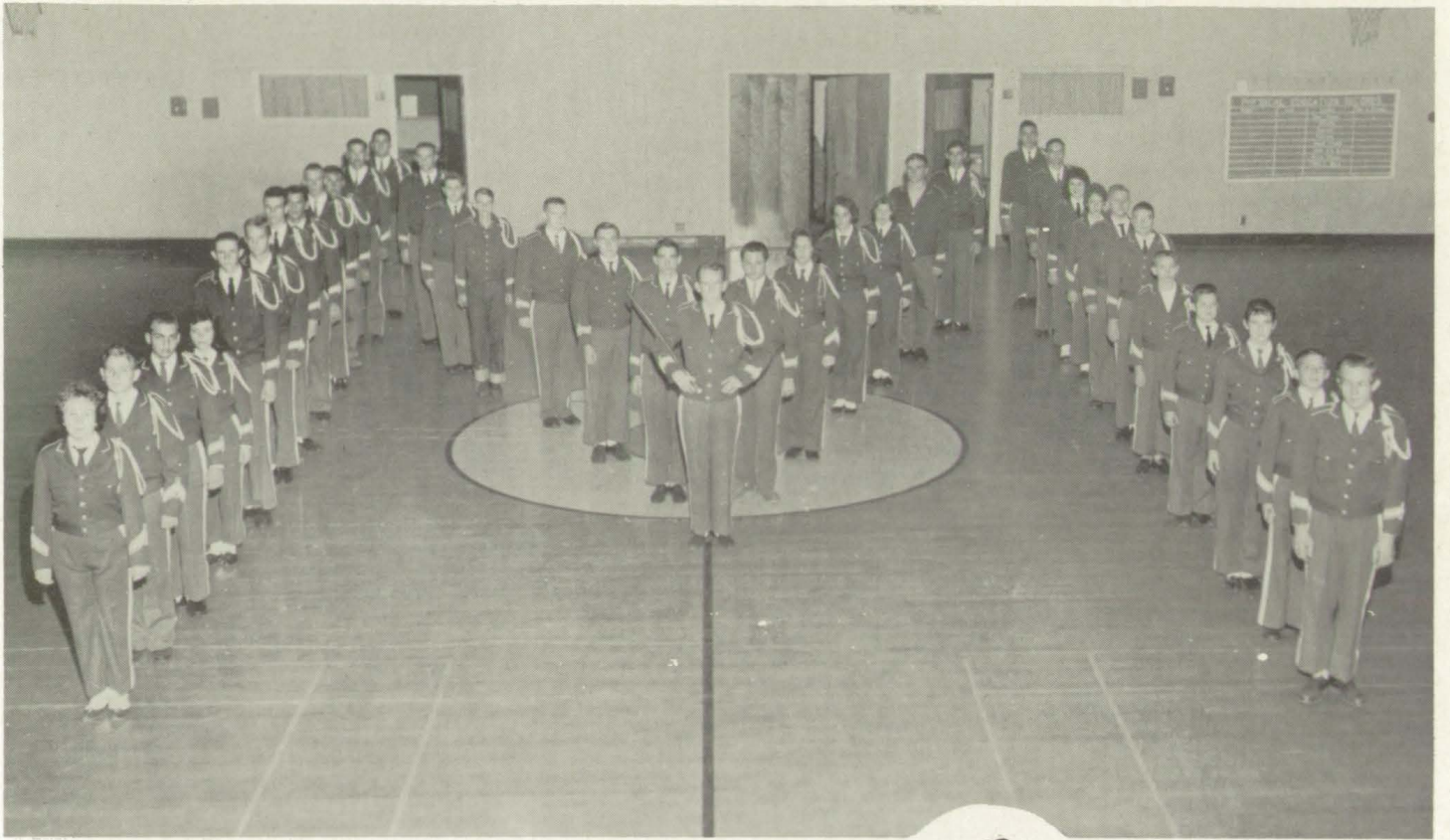
4-H Clubs



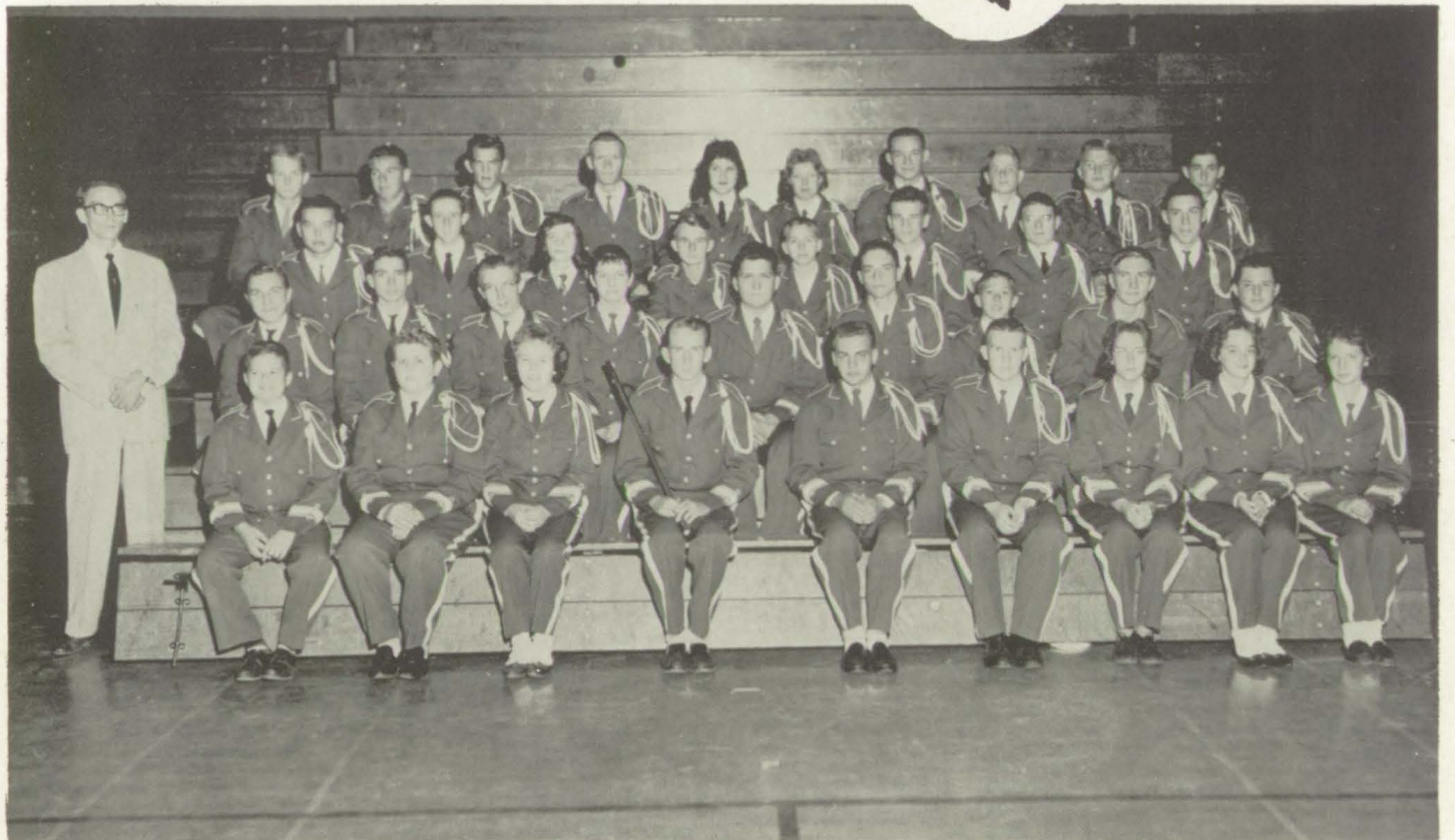
President..... JERRY MANUS
 Vice-President..... REX RICHARDS

Secretary..... JERRY PONDER
 Treasurer..... LAMAR ALLEN





Band



Majorettes



BARBARA HOLCOMBE
Co-Captain



DIANNE HOLCOMBE



SHEILA McWHORTER



BARBARA ESTES

BRENDA SIMS
Captain





"Charley's Aunt"



We'd like you to meet Charley's Aunt!



Larry enjoyed this scene!



Tea, Anyone??



Don't just stand there, help the "lady" up!



Look at those dreamy expressions!

Cast

Jack Chesney..... Bobby Vinson
 Brassett..... Jimmy Samples
 Charles Wykeham..... Jerry Gresham
 Lord Fancourt Babblery..... Larry Garmon
 Kitty Verdun..... Marjorie Pruitt
 Amy Spettique..... Betty Green
 Sir Francis Chesney..... Buford Sanders
 Stephen Spettique..... Larry Spruell
 Donna Lucia D'Alvadorez... Patricia Tarpley
 Ela Delabay..... Patricia Abernathy



"How can I be a lady?"



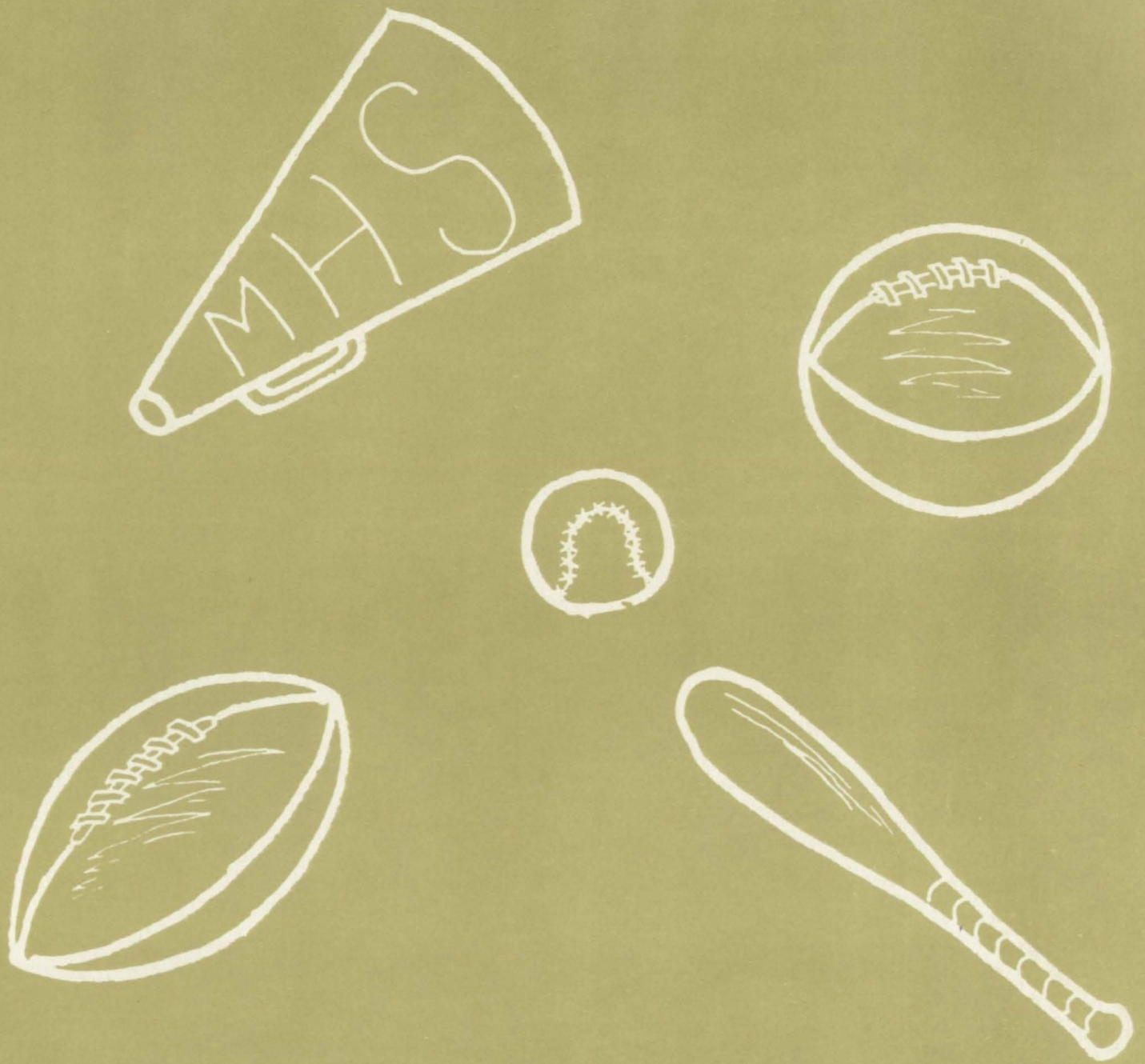
"Don't rush off, Babbs!"



"I will not have my picture taken!"



Donnie and Gail worked hard.



ACT IV

Dreams of Action and Excitement

Tension mounts moment by moment, as the climax approaches. The atmosphere is electrified, the crowds hold their breath. Truly spirit is displayed in SPORTS.



BEVERLY ABERCROMBIE
Co-Captain



BARBARA NORTHCUTT



DIANNE HOLBROOK



VIRGINIA PORTER
Captain

1 1
9 9
6 6
0 1
Cheerleaders



MISS ELEANOR PARADISE
Sponsor



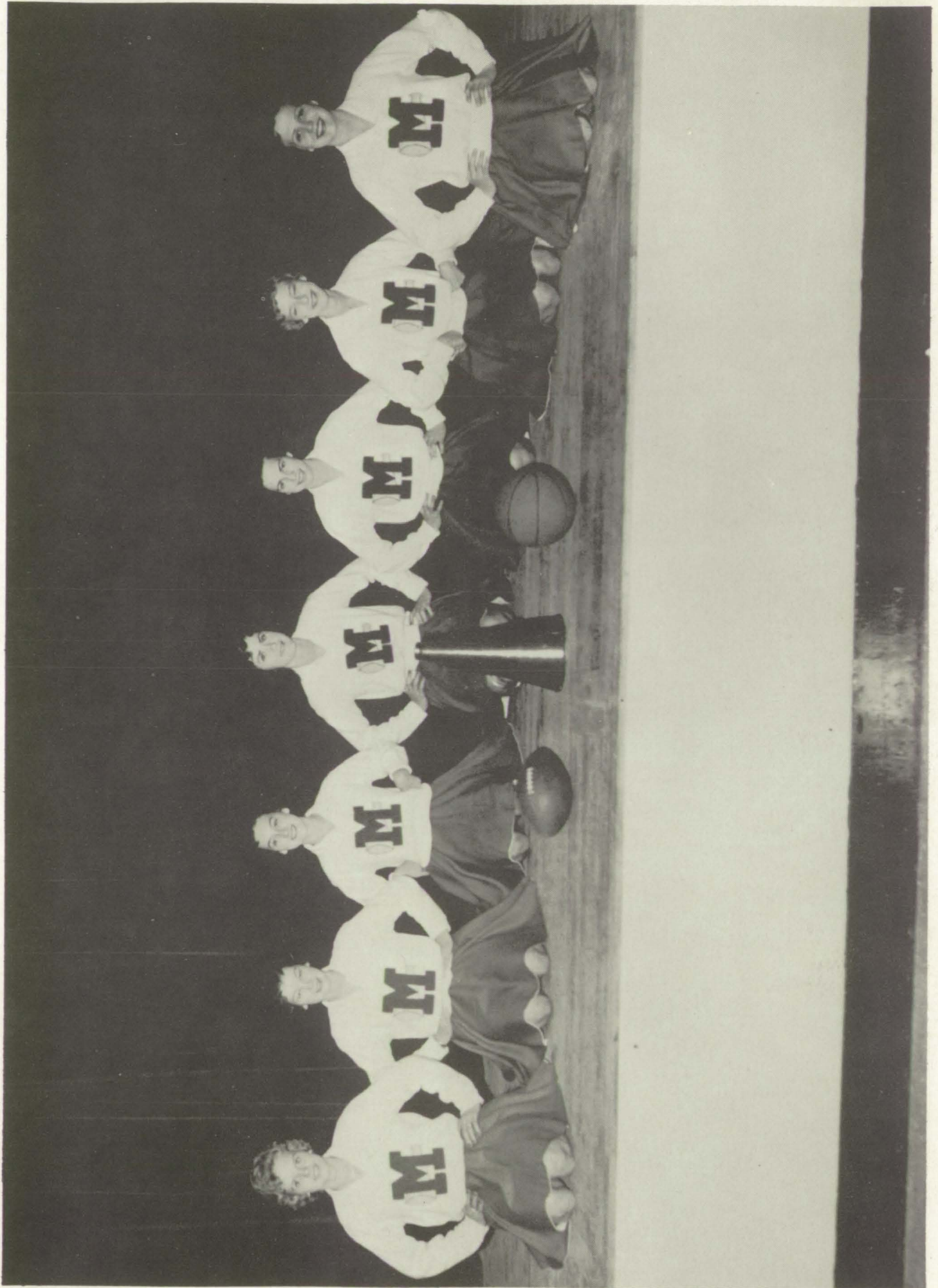
JUDY McFARLIN



JOAN WILLIAMS



GAIL McGINNIS



C
O
A
C
H
E
S



MR. BRAD SANDERSON
Girls' Basketball



MR. GUS LETCHAS
Track
Varsity Football



MR. CLAYTON HAWKINS
B-Team Football
B-Team Basketball



MR. CARROLL BEAVERS
Boys' Basketball

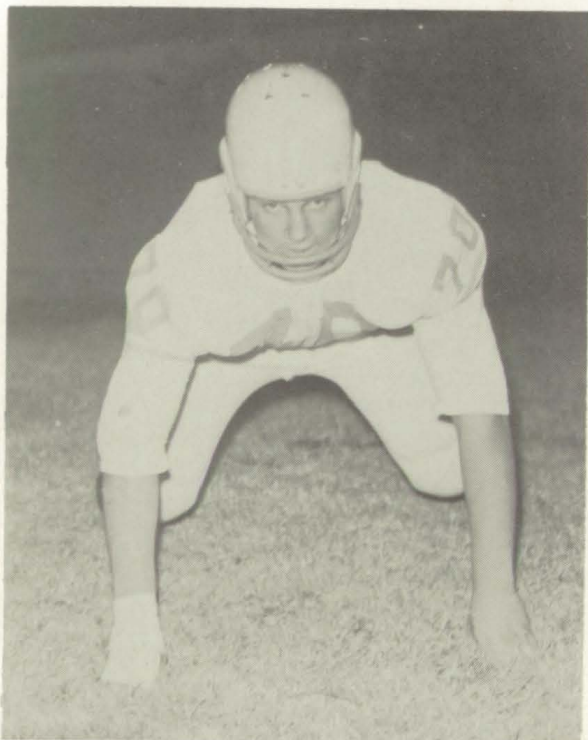


MR. RALPH WILSON
Varsity Football
Baseball



Left to Right; Kneeling: Ellis, Stutts, Turner, Ball, Dangar, Jones, Rainwater, Hamrick, Walker, Letchas, Helton, Pitts. *Standing:* Grantt, Lindsey, Pruitt, Buice, Fouts, Coleman, Shirley, Elliott, Cagle, Cochran, Sims, Samples, Moore, Allen, Sanders, R. Thomas, Barnett, S. Stutts *not pictured.*

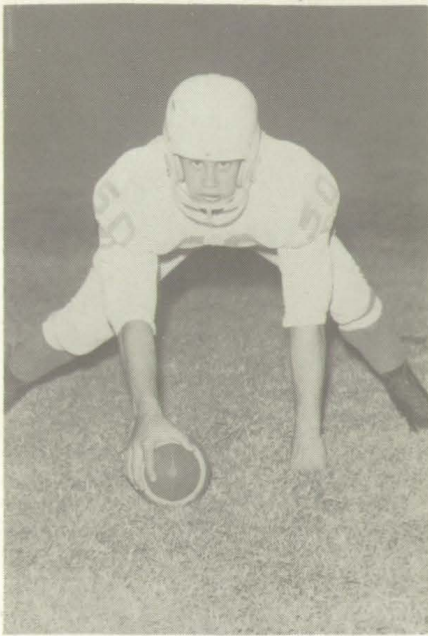
Football



MELVIN COCHRAN
Captain - Tackle



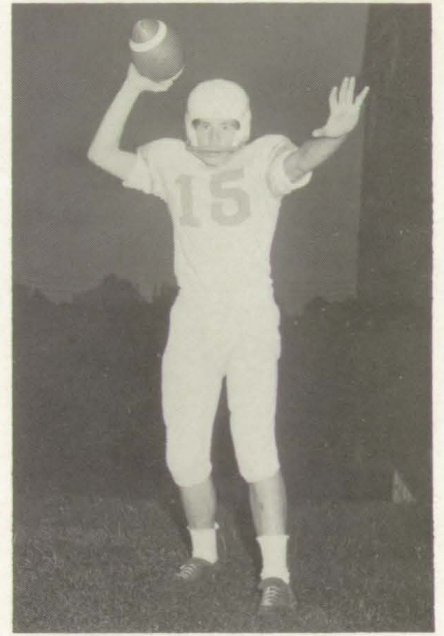
MANAGERS - Roddy Thomas, Gary Helton, Robby Barnett. Clifford Pitts not pictured.



FRED BALL - Center



EDWARD SIMS - Guard



JERRY PRUIT - Quarterback

MILTON 24 - DOUGLAS CO. 0

After a month of hard practice, Milton traveled to Douglas Co. and picked up a 24-0 victory. This score was due to the fine running of Pruitt and Letchas with two TD's each. Other outstanding players of the game were Captain Cochran, Sims, and Coleman.

MILTON 13 - COLLEGE PARK 0

On their home field Milton upset College Park 13-0, to earn them the title of "Team of the Week". Players who made Prep Honor Roll were Coleman, Letchas, and Cochran. Outstanding linemen were Sims, Cagle, and Elliott.

MILTON 28 - ROSWELL 12

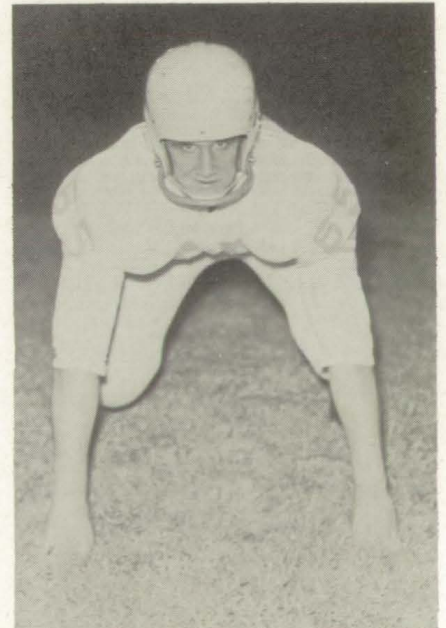
Milton defeated their rivals 28-12. Roswell took a first quarter 6-0 lead, which was broken up by the fine running of Pruitt, S. Stutts, Coleman, and Grant. Sims, Samples, Turner and Cagle had a fine game.



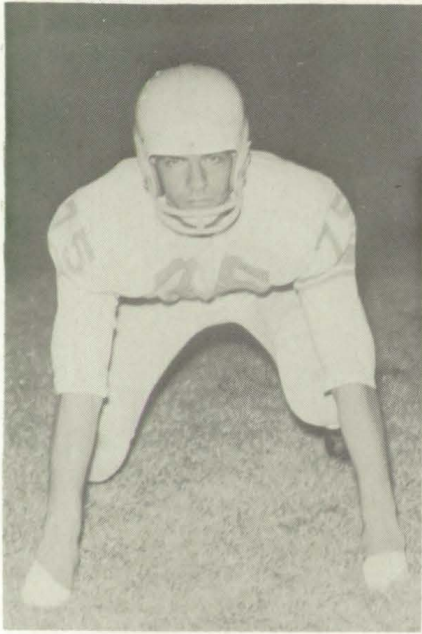
BILLY MOORE - End



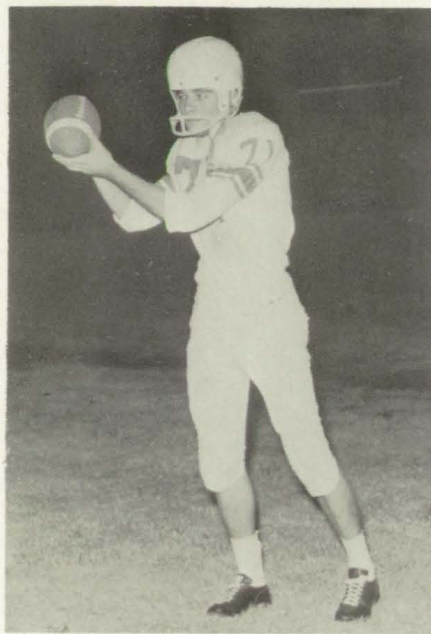
BOBBY COLEMAN - Fullback



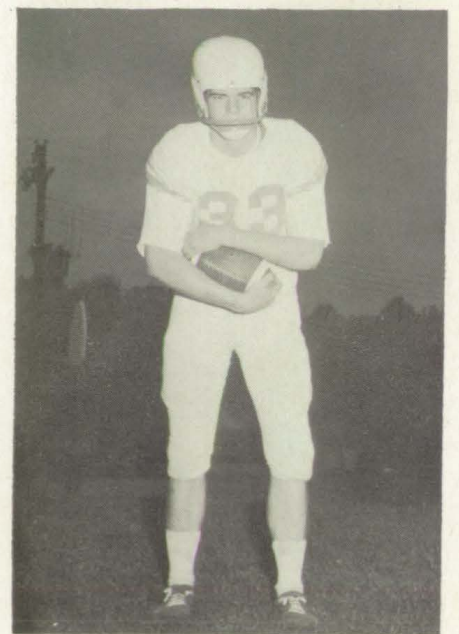
FOSTER CAGLE - Guard



JIMMY SAMPLES - *Tackle*



GORDON SHIRLEY - *End*



PHILIP LINDSEY - *Halfback*

MILTON 14 - FOREST PARK 0

Winning this game earned Gus Letchas "Coach of the Week" honors. Pruitt, Shirley, Coleman, and Grant were offensive standouts. The Eagles' defense led by Fouts, Ball, Cochran, Cagle, Sims, and Samples was superior.

MILTON 14 - HAPEVILLE 6

The Eagles were followed by one of the many large crowds, which they had in the '60 season. Coleman, Grantt, Pruitt, Fouts, Samples, Cagle, Moore, and Cochran were the standouts of the game.

MILTON 0 - HEADLAND 26

The passing of Jimmy Robinson was not to be stopped as Headland racked up twenty-six points. Defensive standouts: Cagle, Sims, Pruitt.



BUFORD SANDERS - *Tackle*



JACKIE HAMRICK - *Guard*



NORMAN GRANTT - *Halfback*



LINTON DANGAR - *Halfback*



DANNY ELLIS - *Quarterback*



ARTHUR LETCHAS - *Halfback*

MILTON 0 - JEFFERSON 33

Despite the rugged defense and fine offense, the Eagles were handed their second defeat of the season. Danny Ellis looked impressive when he took over after an injury to Jerry Pruitt, who played a fine game. Pruitt, Moore, Cochran, Cagle, Sims, and Samples stood out on defense.

MILTON 13 - CENTRAL GWINNETT

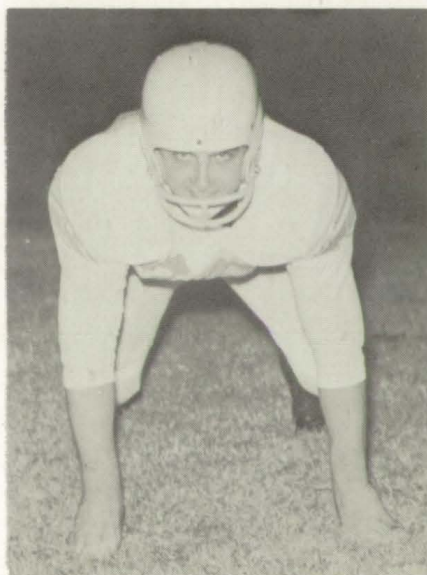
Milton was superior in this game, as they "skunked" their opposers. Norman Grant was hurt in this game, putting all of the halfbacks on the injured list. Cochran, Cagle, Sims, Elliott, Fouts, Shirley, Ball, and Coleman had a fine game.

MILTON 6 - SANDY SPRINGS 6

This was a defensive game. Moore, Cochran and Cagle were offensive standouts. Defensive standouts were Ball, Samples, Shirley, Elliott, Sanders, Allen, and V. Stutts.



JACKIE RAINWATER - *Halfback*



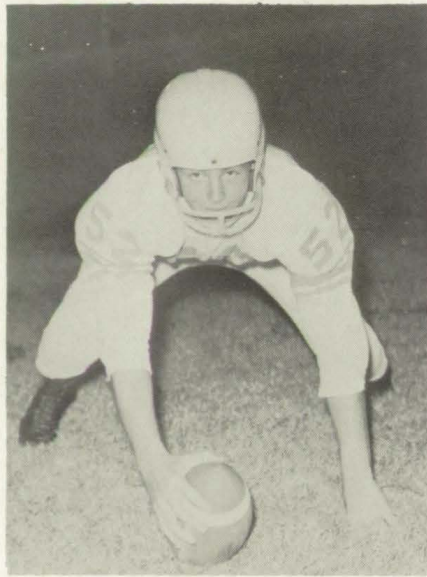
RAYMOND BUICE - *Tackle*



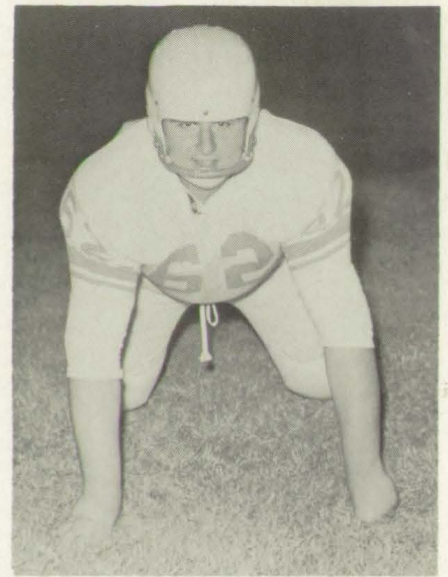
VANN STUTTS - *Quarterback*



BUTCH ELLIOTT - End



JOE TURNER - Center



BOBBY ALLEN - Guard

MILTON 0 - WESTMINSTER 28

Milton missed their injured players as they lost their last game. The Eagles had a fine season under the fine Coaching of Gus Letchas and Ralph Wilson.

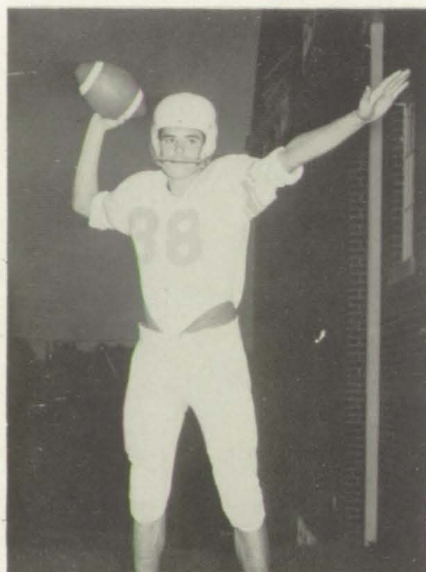
Seniors who played their last game at MHS were Bobby Coleman, Fred Ball, Billy Moore, Shields Stutts, Jimmy Samples, Butch Elliott, Phil Lindsey, Wayne Jones, Bobby Allen, Buford Sanders, and Jerry Pruitt.



TED WALKER - Halfback



WAYNE JONES - Tackle



SHIELDS STUTTS - Quarterback



LOUIE FOUTS - End



Ellis connects with Fouts



Samples on the "prowl"



Butch gets in on tackle



Go, Gordon, Go!



Cagle hauls down another "Wildcat"



"Gang Tackling"



Boys' Basketball

1960 - 1961 SCHEDULE

G. M. A.

WEST GWINETT

DULUTH

SANDY SPRINGS

WESTMINSTER

HEADLAND

DOUGLAS COUNTY

HAPEVILLE

HEADLAND

HAPEVILLE

ROSWELL

WESTMINSTER

DULUTH

SANDY SPRINGS

ROSWELL

COLLEGE PARK

G. M. A.

WEST GWINETT

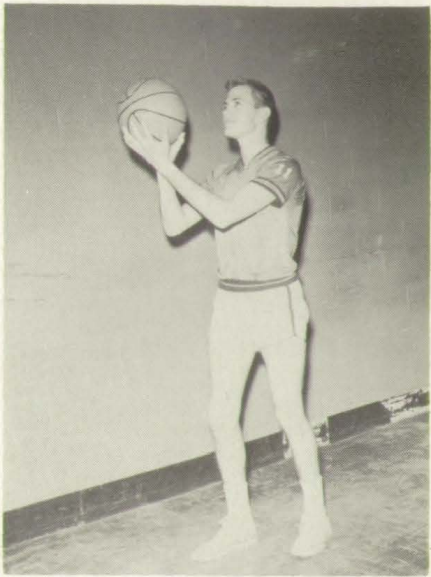
DOUGLAS COUNTY

COLLEGE PARK

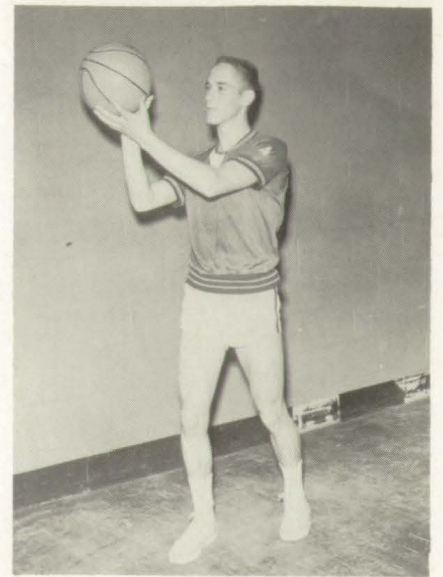
MELVIN COCHRAN
Captain

RICHARD PHILLIPS
Manager





JOHNNY DEVORE – *Center*



REX RICHARDS – *Forward*



ALBERT PIRKLE
Guard

Boys' Basketball



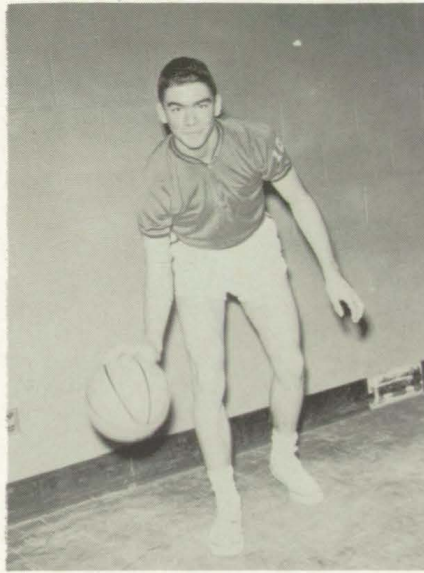
JIM MARTIN – *Guard*



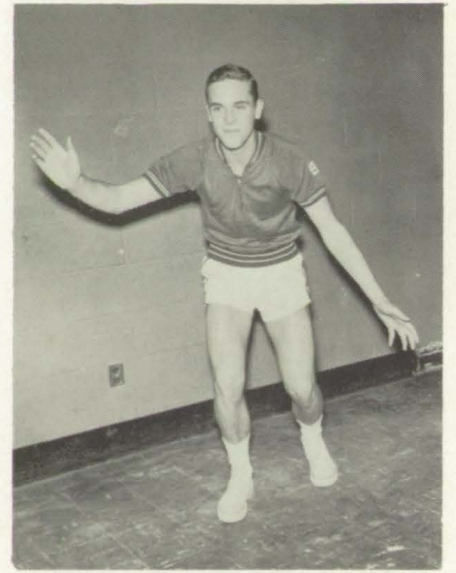
LOUIE FOUTS – *Forward*



FOSTER CAGLE – *Center*



ARTHUR LETCHAS – *Guard*



DANNY ELLIS – *Guard*



WAYNE BRAND – *Forward*



KIT HANSARD – *Guard*



SHIELDS STUTTS – *Forward*



Goalward bound



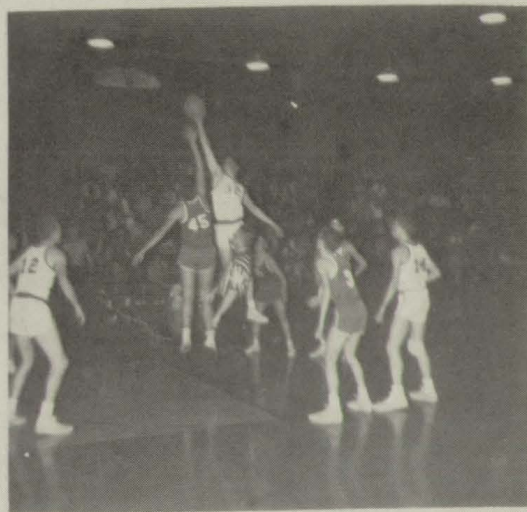
Whats up Johnny?



New technique



Go get that ball.



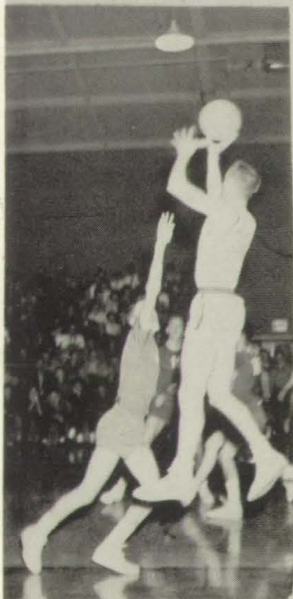
DeVore and Martin wait for tip.



Shoot 'em in the basket!



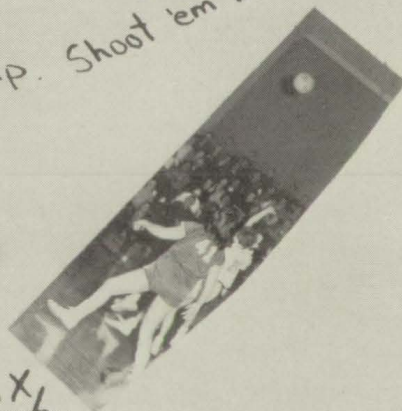
Crowd looks on.



Rex scores two.



Get that ball!



Beat that defense



Rigged defense



Girls' Basketball



SARAH PRESSLEY – *Captain*



GINNY MARTIN – *Manager*



BRENDA SIMS – *Forward*



JUDY POWELL – *Guard*



IMOGENE POTTS – *Guard*



ELLEN BURRISS – *Forward*



GALE WALKER – *Forward*



ALICE MAULDIN – *Forward*



SUSAN MANNING – *Guard*



SISSIE VINSON – *Guard*



JANICE WATERS – *Guard*



JUDY SCHULER – *Forward*



LINDA JOYNER – *Guard*



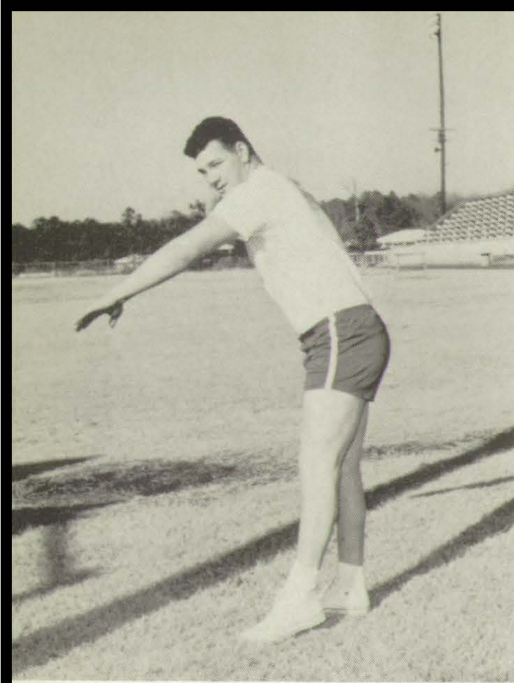
ANITA SIMS – *Forward*



SANDRA HENDERSON – *Forward*



JEAN DAY – *Guard*



MELVIN COCHRAN



FOSTER CAGLE



ROY MARTIN

T
R
A
C
K

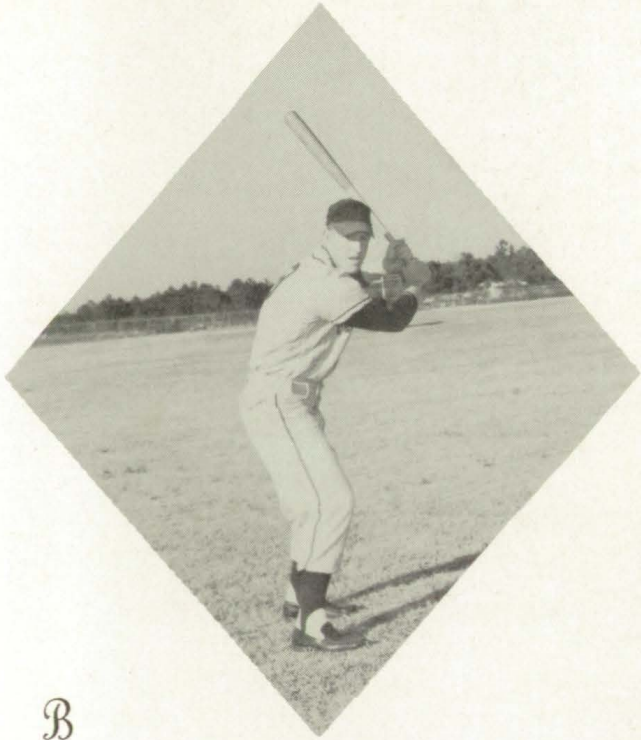


WAYNE MOSS
LAMAR ALLEN
KENNY PAYNE
JACKIE RAINWATER
SILAS LYON

BOBBY COLEMAN, BILLY MOORE

FRED BALL - EDWARD SIMS - PHIL LINDSEY





LOUIE FOUTS
Outfielder



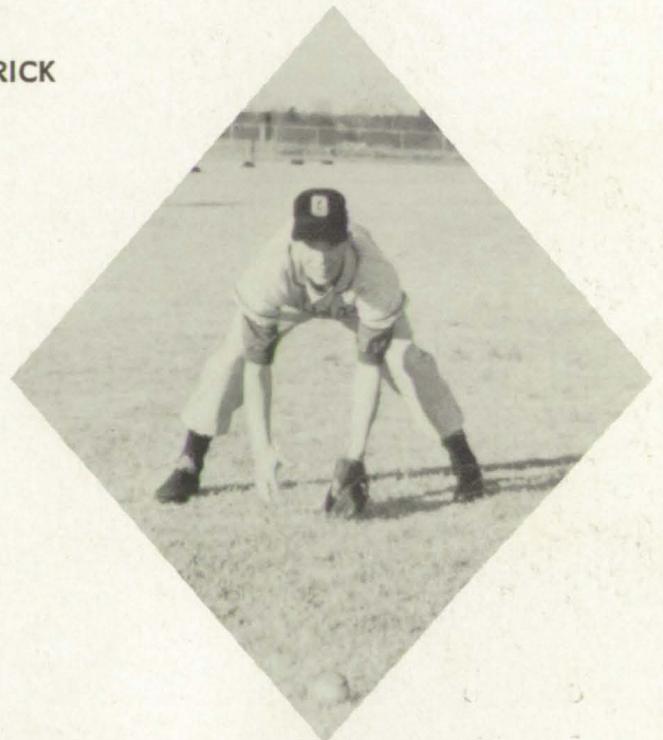
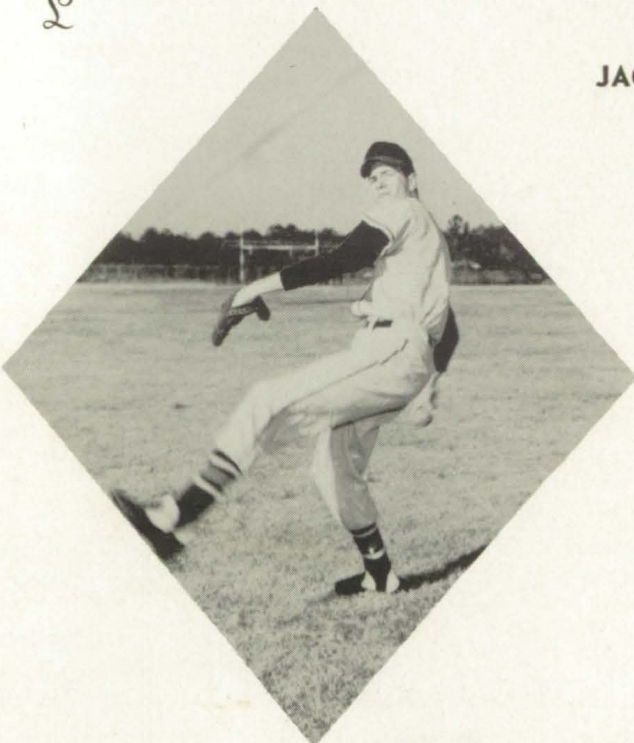
JACK RICKLES
Infielder



JACKIE HAMRICK
Manager

JOHNNY DEVORE
Pitcher

PHILIP STOVER
Infielder



B
A
S
E
B
A
L
L

1
9
6
4



Left to Right: Jimmy Hamrick, Jackie Rainwater, Freddie Stiles, Jimmy Thompson, Grady Pitts, James Stewart, Howard Day, Roddy Thomas, Royce Vaughan, Hugh Rucker, Jackie Johnson, Jerry Wright, Kenny Payne.

Basketball

B

Football



Standing: Jimmy Hamrick, Kenny Bookmiller, Darrell Ingram, Jackie Johnson, Randell Moss, Allen Green, David Rainer, Phil Johnson, Terry Smith. *Kneeling:* Claude Eubanks, Micheal Andrews, Tony Dinsmore, Kerry Hansard, Tommy Phillips, Bow Fowler.



JUNIORS

President..... JIM MARTIN
Vice-President..... ARTHUR LETCHAS
Secretary-Treasurer..... TED WALKER



SOPHOMORES

President..... BARBARA HAMRICK
Vice-President..... JUDY McFARLIN
Secretary-Treasurer..... JOAN WILLIAMS



Classes



FRESHMEN

President..... LARRY BENNETT
Vice-President... SANDRA HENDERSON
Secretary-Treasurer... SUSAN MANNING

SUB-FRESHMEN

President..... JANE PHILLIPS
Vice-President..... SADIE PHILLIPS
Secretary-Treasurer.... SHELIA RUCKER

Juniors



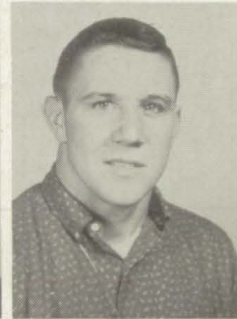
BEVERLY ABERCROMBIE
PATRICIA ANDERSON
SCOTTY BARNETT
PATRICIA BENNETT



MARY JO BISHOP
BARBARA BLACKWELL
JERRY BLACKWELL



WAYNE BRAND
ANNE BURGESS



MARJORIE BYERS
FOSTER CAGLE



REBA CARRIGAN
LARRY CASTLEBERRY
REGINA CASTLEBERRY



JOYCE CATES
ANDREA CHATHAM
MELVIN COCHRAN
RITA DANGAR

Juniors

ELIZABETH DAY
 JAMES DENMAN
 CLARENCE DINSMORE
 DICKIE DINSMORE



SUE DOUGLAS
 RALPH ELLIS
 LINDA ENGLISH



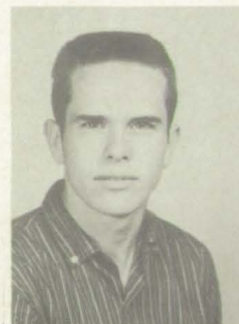
CHARLES ESTES
 DOUGLAS ESTES



SALLY FLECK
 LOUIE FOUTS



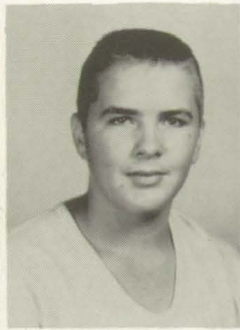
MARVIN FOUTS
 PATRICIA GAYTON
 NORMAN GRANT



SUE GRIMES
 KIT HANSARD
 LARRY HARRISON
 DOUG HOLBROOK



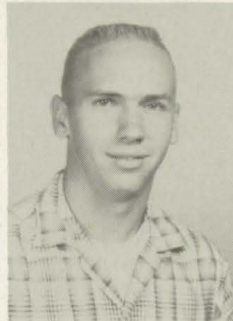
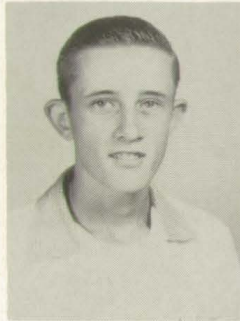
Juniors



ROBERT HOOD
GLORIA HUNNICUTT
CALVIN HUNSUCKER
BRENDA JETT



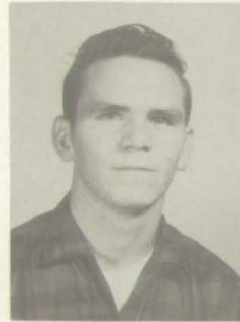
ANITA JOHNSON
HELEN JONES
MARTHA ANN KELL



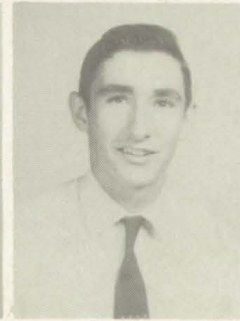
DELBERT KIRBY
WENDALL LANCE



ROBERT LATHEM
ARTHUR LETCHAS



SILAS LYON
JIM MARTIN
SHANNON MARTIN



DONNIE MAULDIN
MARGARET MOORE
DALE MULKEY
DENNIS MYERS

Juniors

SHARON MYERS
 JANICE NORWOOD
 LARRY ODUM
 BRENDA PHILLIPS



HENRY PHILLIPS
 BILLY RAY POTEETE
 IMOGENE POTTS



JAMES PRUITT
 GAIL RAINWATER



JACK RICKLES
 GARY ROBERTS



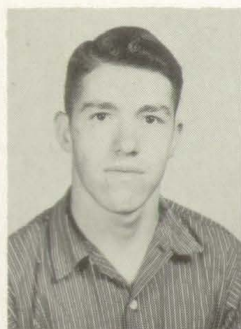
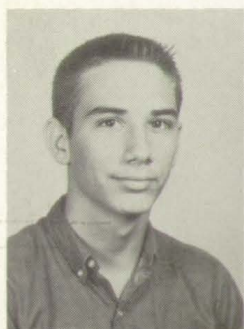
SUE SAMPLES
 BRENDA SIMS
 EDWARD SIMS



GORDON SHIRLEY
 WESLEY SPRUILL
 SELINA STEWART
 SHIRLEY STRICKLAND



Juniors



VAN STUTTS
ANN SUTTON
DAVID SUTTON
LANIER THACKER



JUANITA TREADAWAY
JOE TURNER
SISSIE VINSON



TED WALKER
LINDA WATERS



DIANE WESTBROOK
BARNEY WEST



BUTCH WHEELER
JOYCE WHITE
LORETTA WILLIAMS



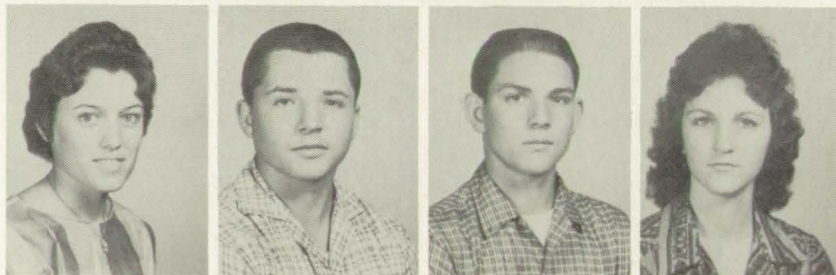
MORRIS WILLIAMS
DAVID WILSON
CHARLENE WRIGHT
LARRY WRIGHT

Sophomores

STEVEN ABERNATHY
PRISCILLA ALLISON
KATHLEEN ANGLIN
DORSEY ARMSTRONG
BOBBY ASHEBRANNER



BERTA MAE AVERY
HAYDEN BEARDEN
MARK BELL
DIANNE BRANNON



BOBBY BRYANT
RAY BRYANT
RYMON BUICE



ANNETTE BURNETT
JEANETTE BURNETT



ALTON CAGLE
JUDY CASH
JANE CHILDERS



DELENE COCHRAN
GEORGE COLE
MINNIE COLLETT
SARA COLLETT



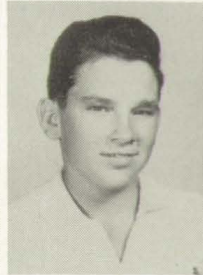
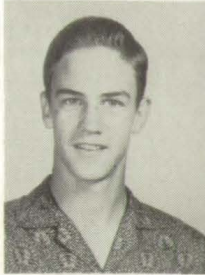
JIMMY CONNER
EVERETT COOK
LARRY COOK
RICKY DALTON
JUDY DANGAR



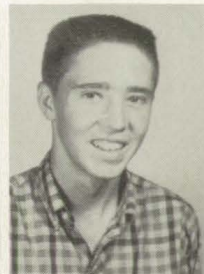
Sophomores



PEGGY DAVIS
LARRY DAVIS
RITA ANN DODD
DENNY EARNSHAW
RUBY EUBANKS



LARRY FOSTER
ANN FOUTS
DEMETRA FOWLER
BILLY FREELAND



LOY GREEN
LUCY GREEN
MARVIN GREEN



BARBARA HAMRICK
FRANCIS HAMRICK



JACKIE HAMBRICK
JOYCE HANSARD
ROBERT HANSARD



GLEND A HENDERSON
JERRY HENDERSON
DIANNE HOLBROOK
DIANNE HOLCOMB



LARRY HOLCOMB
ELSIE HUDSON
EARNEST KENDRIX
DONALD KIRBY
ALFRED LEE

Sophomores

JANICE MAJORS
ROY MARTIN
KENNY MASSEY
LARRY MATHEW
FAYENELL McCLAIN



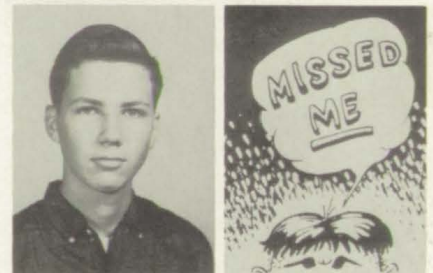
PIERCE McCLESKY
JOAN McFARLAND
JUDY McFARLIN
REBECCA MYERS



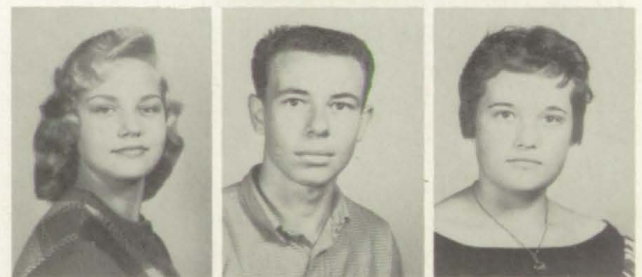
RUBY NALLEY
MARTHA NEAL PAYNE
BRENDA PHILLIPS



RICHARD PHILLIPS
ATWARD POWELL, JR.



JUDY POWELL
JACKIE PRESSLEY
SHIRLEY PRUITT



JACKIE RAINWATER
DONNA RUCKER
HUGH RUCKER
TOMMY RUSK



HARVEY SARGENT
JUDY SCALES
JUDY SHULER
ALLEN RAY SMITH
NANCY STANDRIDGE



Sophomores



BETTY STATEN
 JANICE STEWART
 FREDDIE STILES
 CAROLYN TATUM
 JAMES TATUM



RODDY THOMAS
 JANE THOMPSON
 JIMMY THOMPSON
 MILDRED THORNTON



CAROLYN TIMMS
 TONY TIMMS
 JANICE TURNER



JACK TWITTY
 ROYCE VAUGHN



RAY WALLACE
 JANICE WATERS
 JOYCE WATKINS



PATRICIA WESTBROOKS
 JOAN WILLIAMS
 DAVID WOOD

Freshmen

CARROLL ANDERSON
J. R. ANGLIN
JANICE BARFIELD
JEANETTE BARFIELD
ROBBY BARNETT



DIANNE BARRETT
JOAN BELL
MARY BELOTE
MILT EAGLE



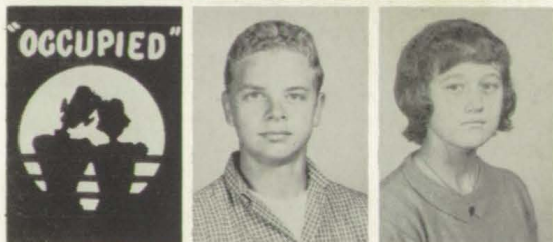
LARRY BENNETT
LARRY BENNETT
BRENDA BIDDY



JEAN BISHOP
JERRY BLALOCK
TERRY BLALOCK



MILT EAGLE
GARY BRANNON
WYNELLE BUTTERWORTH



BUDDY CARROL
MARTHA CARRUTH
ROGER CASTLEBERY



DONNA CHESTER
HALLY BELL COBB
BARRY COLEMAN
MARK COLLETT



SUSIE CONNER
BRENDA COOK
LAMAR COX
MARGIE COX
MAHALA CRISLER



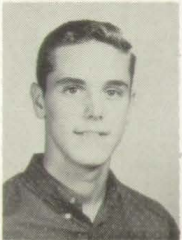
Freshmen



HOWARD DAY
MARTHA JEAN DAY
BRENDA DINSMORE
HELEN DINSMORE
JOHNNY DOBSON



CARLOS DOCKERY
GEORGE ECHOLS
GAY EDWARDS
DOUGLAS ELLIOTT



DANNY ELLIS
DONNA ELLIS
JIMMY ELLIS



BARBARA ESTES
PATRICIA FELL
BARBARA SUE FOX



EVA FREELAND
DAVID FULLER
JACKIE GARMON



JERRY GARMON
MARCUS GARRETT
JACKIE GORMAN



PATSY GORMAN
PATRICIA GRANT
ANN GREEN
LOWRY GREEN



LARRY GRESHAM
MARY MARGARET GRIFFIN
JIMMY HAMRICK
PEGGY HAMRICK
DREMA HANEY

Freshmen

RONNIE HANEY
BRENDA HANSARD
SANDRA HENDERSON
CATHY HENDRICKS
CAROLYN HOLCOMBE



C. M. HONEA
JERE HOOK
LYNN HULSEY
DERYL INGRAM



DIANNE JACKSON
BOBBY JOHNSON
JACKIE JOHNSON



PAUL JOHNSON
CAROLYN JONES
DAVID JONES



JIMMY KELL
KATHY KENDRIX
MARY KENDRIX



LAMAR LATHEM
EDDIE LONER
MOZELLE LONG



CAROLYN LOUDERMILK
JULIE McCLAIN
VIVIAN McCLESKEY
GAIL McGINNIS



GAIL McPHERSON
SHIELA McWHORTER
SUSAN MANNING
LARRY MANUS
PATRICIA MARSHALL



Freshmen



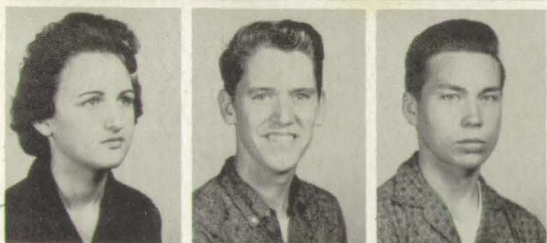
BARBARA MARTIN
JAMES MARTIN
JANICE MASSEY
PATSY MASSEY
BARBARA MATHIS



KENNETH MATHIS
ALICE MAULDIN
HUGH MEARS
JIMMY MOSS



NANCY MOSS
PATRICIA MOSS
RANDALL MOSS



BRENDA MULLIGAN
BOBBY MYERS
EARNEST NALLEY



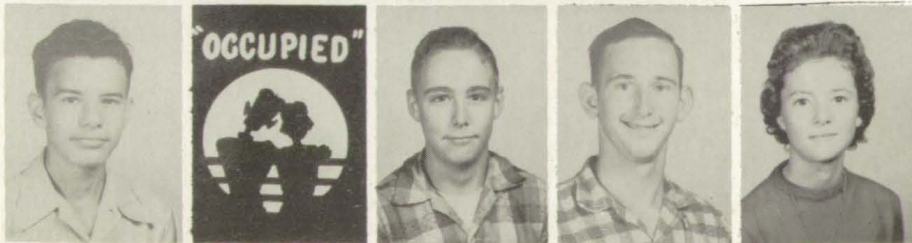
SANDRA NALLEY
RICHARD NICHOLS
ELOISE PADGETT



DONALD PENCE
RONALD PENCE
MELBA PENDLEY



CHARLES PETTYJOHN
BARBARA PHILLIPS
BETTY PHILLIPS
ERNESTINE PHILLIPS



JAMES PHILLIPS
ROBERT PLUMLEY
GENE POTEETE
SIDNEY POTTS
NANCY PURDOM

Freshmen

RITA RAYNER
JOY REEVES
JIMMY RODGERS
ELIZABETH ROGERS
MICHAEL RIDINGS



FAY SAMPLES
HELEN SHIRLEY
LAWRENCE SHIRLEY
SUZANNE SHEARIN



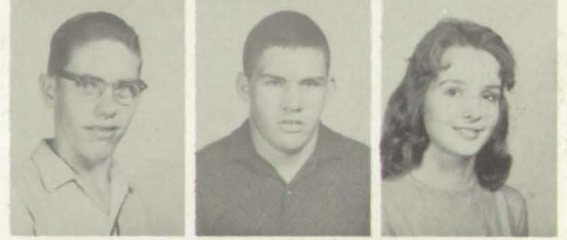
ANITA SIMS
TERRY SMITH
HENRY SPENCE



SUE SPORT
CLARA SPRUELL
CRIS SPRUILL



ROGER SUGGS
BOBBY SUTTON
LINDA TREADAWAY



SHIRLEY TREADAWAY
ANNETTE VAUGHAN
TROY WADDELL



ERIC WALDEN
GAIL WALKER
PATRICIA WALKER
BARBARA WALLS



SUE WHITT
BARBARA WILKIE
DOUGLAS WILLIAMS
RANDALL WILLIAMS
ROBERT WILLIAMS



Freshmen



DAVID WILSON
LINDA WILSON
JESSIE WOOTEN
JERRY WRIGHT
THOMAS YOUNG



THOSE FOOTBALL GAMES WERE ROUGH!



LET'S GET TO CLASS ON TIME, O. K.?

Sub-Freshmen

EVELYN ABBOTT
 TONY ALLEN
 GARY ANDERSON
 KENNETH ANDERSON
 ROBERT ANDREWS
 BETTY ANGLIN



LARRY ARONS
 PATRICIA AVERY
 DOYCE BAILEY
 PEGGY BAILEY
 JEANETTE BAKER



SUE BALES
 MAYBELLE BARNES
 PEGGY BARNES
 ALTA BARRON



WALTER BATES
 BILLY BELL
 HELEN BISHOP



BETTY BLACKWELL
 DAISY SUE BLALOCK



KENNETH BOOKMILLER
 DOROTHY BRANNON
 SHERRY BROADWELL



BRENDA BROOKS
 CHESTINE BROOKS
 JUDY BROOKS
 HARVEY BROOKS



JANE BROWN
 JUDY BROWN
 PEGGY BROWN
 DALE BRYANT
 BARBARA BURNETT



RACHAEL BURNETT
 JERRY BYRD
 TERRY BYRD
 GARY CAGLE
 SARALENE CAGLE
 LEWIS CASH



Sub-Freshmen



GARY CASTLEBERRY
HAROLD CHRISTOPHER
LILLIAN CLAYTON
ROY CLAYTON
BILLY COBB
LAMAR COLLETT



RAY COLLETT
GARY COOK
NANCY COOK
SHARON COOK
REGGIE COX



TONY COX
RICKY DANGAR
JOAN DAVIS
PATRICIA DINSMORE



PEGGIE DINSMORE
TONY DINSMORE
ALVIN DISHAROON



ROY DOUGLAS
BUTCH DUNCAN



LINDA DUNCAN
NELLENE DUNCAN
ALFRED DURAN



CLAUD EUBANKS
CAROL SUE FIELDS
LINDA FIELDS
BERNICE FINE



JIMMIE FINE
EARL FLYNN
DIANE FORRESTER
RICHARD FOWLER
GAIL FRAISER



GARY GARMON
GLADICE GARMON
JANICE GARMON
LINDA GARMON
OTIS GARMON
JEAN GARRISON

Sub-Freshmen

JEROL GARRISON
KAY GIPSON
HELEN GORMAN
JERRY GRAHAM
ALLEN GREENE
PATSY GREEN



SHIRLEY GREEN
LARRY GUNTER
SHIRLEY GUNTER
MARY JO HALEY
LONNIE HAMRICK



KERRY HANSARD
SHIRLEY HARBIN
BRENDA HEARD
JACK HENDERSON



JOEL HENDERSON
MELBA HENDERSON
PHIL HERRING



SUE HICKS
CHARLES HOLBROOK



ANITA HOLCOMBE
BOBBY HOLCOMBE
CAROLYN HOLCOMBE



LINDA HOLCOMBE
ROGER HOLCOMBE
SARA HOLCOMBE
ROBERT HOLDEN



JOANNE HOLTZCLAW
CONNIE HUDGINS
DOUGLAS HULSEY
RITA JETT
GRACE JOHNSON



JOE JOHNSON
PHIL JOHNSON
DIANE JONES
DOYLE JONES
JEAN KIMBRELL
JUDY KIMBRELL



Sub-Freshmen



DORIS KIRBY
JOE LAWLESS
JEAN LEE
MICHAEL LIVELY
MORRIS LONER
ELLIS MARTIN



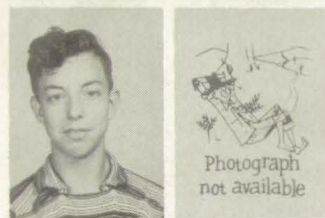
JENNY MARTIN
LINDA MARTIN
RAYBURN MARTIN
SAMMY MARTIN
TOMMY MARTIN



CAROL McGINNIS
DIANA MEARS
MILLARD METCALF
AVIS MORGAN



JOHN MORRIS
LINDA MORRIS
MORRIS MULLINAX



ROY NEWBERRY
MARCUS NEWTON



HULUN NICHOLS
JAMES NIX
LARRY NIX



CARROLL NORRIS
DIANNE NUNN
ROGER OCKOMON
DONALD OLIVER
JACKIE PAYNE



LARRY PAYNE
BRENDA PENDLEY
BILLY PERRIN
BRENDA PHILLIPS
JANE PHILLIPS



JERRELL PHILLIPS
SADIE PHILLIPS
TOMMY PHILLIPS
JANET PINYAN
GRADY PITTS
ELIZABETH PLUMLEY

Sub-Freshmen

CICERO POTTS
VERNON POTTS
HAROLD PRICE
FAY PRUITT
LINDA PRUITT
EDITH QUAY



BILL RAINWATER
BRENDA RAY
DONALD RAY
DAVID RAYNER
DONALD RICHARDS



MARTHA RICKLES
GLENDON ROBERTSON
MARTHA DEAN ROLAND
SHEILA RUCKER



PAT SAMPLES
CHESTER SANDERS
HUGHIE SCOGGINS



MARIE SHARPTON
LINDA SHIRLEY



GLENN SIMS
J. C. SMITH
RONNIE SMITH



DAN SPRUELL
DAVID STANDRIDGE
SUE STAPLER
SUSAN STAPLER



EDWARD STATON
JAMES STEWART
AVIS STONE
DEXTER STRICKLAND
LEVON STRICKLAND



MICHEAL SWEENEY
JOE TARPLEY
LARRY TATUM
PAUL TAYLOR
MARY TEMPLES
LARRY THREAT



Sub-Freshmen



DORIS TREADAWAY
 JEAN TURNER
 JOHN TURNER
 JANICE VAUGHAN
 DOROTHY WALKER
 LINDA WALKER



ANN WALLIS
 TOMMY WALLACE
 MONTEZ WARREN
 HILDA WEBB
 BILLY WESTBROOKS



STEVIE WESTBROOKS
 PHILLIP WILSON
 GENEVA WOOD
 NANCY WOOD



PAUL WOOD
 WILLENE WOOD
 BARBARA WOODALL



ROY YOTHER



In Appreciation

We shall always be grateful to the many people who have helped to make the 1961 AERIE possible. The support given by the faculty and students during the picture schedule was certainly a "boost", and to you, we say "Thanks".

To each of the advertisers who helped finance our yearbook, we extend our appreciation.

Miss Gail Thompson and Mr. Clayton Hawkins, our sponsors, were wonderful to help us any time we needed them.

We are indeed grateful to Mr. E. S. Garmon, Hewett Photographers and Publishers, and Mr. Cliff Burnett for their advice and assistance.

We give our many thanks to the section editors and the entire AERIE staff who gave their time and efforts to the many tasks that were necessary to produce this yearbook.

We shall always remember this as being a hard task made easier and more memorable by the help of others.

MARJORIE and BRENDA

Congratulations
to
Milton High School Class of 1961
From



American Legion Post 201
American Legion Auxiliary Unit 201

THE AMERICAN LEGION AND ITS
AUXILIARY ANNUALLY SPONSOR MORE
AMERICANISM PROJECTS IN OUR
NATION'S SCHOOLS THAN ANY ORGANIZATION
IN THE WORLD.

COMPLIMENTS OF

THE ROSWELL BANK



A MEMBER OF THE FEDERAL DEPOSIT INSURANCE CORP.

WALTER EAVES, PRESIDENT

ROSWELL,

GEORGIA

COMPLIMENTS OF

CHARLES E. ABERCROMBIE

ROSWELL,

GEORGIA

COMPLIMENTS OF

BYERS FURNITURE CO.
FOR GRACIOUS LIVING

DREXEL - PA. HOUSE - KROEHLER - EMPIRE
CHEROKEE - AMERICAN OF MARTINVILLES
HIGHWAY 19 CANTON STREET
993-3842 993-3042
ROSWELL, GEORGIA

COMPLIMENTS OF

REEVES SUPERMARKET

ROSWELL,

GEORGIA

COMPLIMENTS OF

ROSWELL FUNERAL HOME

ROSWELL,

GEORGIA

MILTON HIGH SCHOOL P.T.A.

MR. AND MRS. TRUMAN FLOWERS

CO-PRESIDENTS

COMPLIMENTS OF

ETRIS

SAUSAGE COMPANY

COMPLIMENTS OF

MILTON HIGH BETA CLUB

ACHIEVEMENT

CHARACTER

LEADERSHIP

COMPLIMENTS OF

THOMAS BEAUTY SHOP

993-2881

ROSWELL,

GEORGIA

BATES and WOOD

SUPER MARKET



GR 5-5641

ALPHARETTA,

GEORGIA

J. W. MARTIN ELECTRIC CO.

NORTH ROSWELL, GEORGIA

ELECTRICAL CONTRACTING AND REPAIRS

G. E. APPLIANCES — HARDWARE
SPORTING GOODS — PAINT

PHONES

6611 OR 6482

COMPLIMENTS OF

LOUIE E. JONES
FUNERAL HOME

GR 5-2171

RES. GR 5-3431 — GR 5-5524

ALPHARETTA,

GEORGIA

COMPLIMENTS OF

STATE FARM INSURANCE CO.

AGENTS

W. J. DOLVIN

CLAYTON HAWKINS

ROSWELL

ALPHARETTA

993-6032

GR 5-5849

ALPHARETTA FLORIST

THE FLORIST
THAT ORIGINALITY BUILT

" WE SERVE "

GR 5-5605

993-6355

COMPLIMENTS OF

W. R. REEVES AND SONS

ROSWELL,

GEORGIA

LET US SELL YOUR FARM
GEORGIA REAL ESTATE SERVICE

RALPH DANGAR
AGENT

PHONE 993-6621



COMPLIMENTS OF
ORA'S BEAUTY SHOP

MEMBER OF
N. H. C. A.



PHONE
993-6016

ROSWELL,

GEORGIA

COMPLIMENTS OF

TOLBERTS

CLOTHING FOR THE ENTIRE FAMILY

ROSWELL,

GEORGIA

Durham and Taylor

Supply Company

CONCRETE PRODUCTS

SEPTIC TANKS - DRAIN TILE
BELL AND SEWER PIPE
AND FITTINGS

PHONES

DAY ONLY
GR 5-5609

DAY OR NIGHT
GR 5-5627

ALPHARETTA,

GEORGIA

COMPLIMENTS OF

ROSWELL

MOTOR COMPANY



SALES

SERVICE

ROSWELL,

GEORGIA

COMPLIMENTS OF

H.H. HANEY

ALPHARETTA CAFE

ALPHARETTA,

GEORGIA

COMPLIMENTS OF

BUICE GROCERIES

ALPHARETTA,

ROUTE 3

GEORGIA

COMPLIMENTS OF

ROY D. WARREN

REAL ESTATE

PHONE

993-6474

ROSWELL,

GEORGIA

COMPLIMENTS OF

JOE COLEMAN

ALPHARETTA STANDARD SERVICE
STATION

PHONE GR 5-6121

ALPHARETTA,

GEORGIA

COMPLIMENTS OF

C. P. BRADY AND SON

SALES



SERVICE

ALPHARETTA,

GEORGIA

COMPLIMENTS OF

**BURGESS AND KNIGHT
GULF PRODUCTS**

PHONE GR 5-9413

ALPHARETTA,

GEORGIA



W.P. STEPHENS

LUMBER COMPANY

"STEPHENS QUALITY IS YOUR
BEST ASSURANCE OF ECONOMY"

PHONE 993-6363

ROSWELL,

GEORGIA

COMPLIMENTS OF

HENDERSON FEED STORE

HARDWARE - SEED - FERTILIZER

ESHelman RED ROSE FEEDS

PHONE GR 5-2351

OWNER

T.W. HENDERSON

ALPHARETTA,

GEORGIA

DECORATE TODAY MOVE IN TODAY
MINFLO MODERN FLAT

SPRING, SUMMER, WINTER OR FALL...PAINT WITH MINFLO AND IN 20 MINUTES YOU CAN LIVE IN YOUR NEWLY DECORATED SURROUNDINGS. IT HAS NO PAINT LIKE ODOR CAN BE APPLIED WITH BRUSH OR ROLLER, AND DRIES TO A RUBBER TOUCH FINISH.

WITH MINFLO YOU CHOOSE FROM NON-TIRING INTERIOR SHADES THAT GIVE YOUR WALLS A MODERN FLAT FINISH SO FLATTERING TO YOUR OWN STYLE OF FURNISHINGS.



BARNETT BROS., INC.

ALPHARETTA, GEORGIA
BOX 188

GR 5-5786

993-6373

WASHING MACHINES - GROCERIES - RANGES
REFRIGERATORS - HARDWARE - WESTINGHOUSE
LAUNDROMAT - SPEED QUEEN

COMPLIMENTS OF

L. B. FINDLEY
FEED, SEED, FERTILIZER

DULUTH,

GEORGIA

PHILLIPS

VARIETY STORE

PHONE GR 5-5444

COMPLIMENTS OF

STRICKLAND AUTO PARTS, INC.

PHONE

993-4086

993-6828

ROSWELL,

GEORGIA

ALPHARETTA,

GEORGIA

COMPLIMENTS OF

MEADOW BROOK HILLS
SUBDIVISION
HOMES AND LOTS FOR SALE

G. L. HOOK — OWNER, DEVELOPER
PHONE GR 5-5003
ALPHARETTA, GEORGIA

THE 1961 CHEERLEADERS
CAPTAIN CO-CAPTAIN
VIRGINIA PORTER BEVERLY ABERCROMBIC

DIANNE HOLBROOK
BARBARA NORTH CUTT
JUDY McFARLIN
GAIL McGINNIS
JOAN WILLIAMS

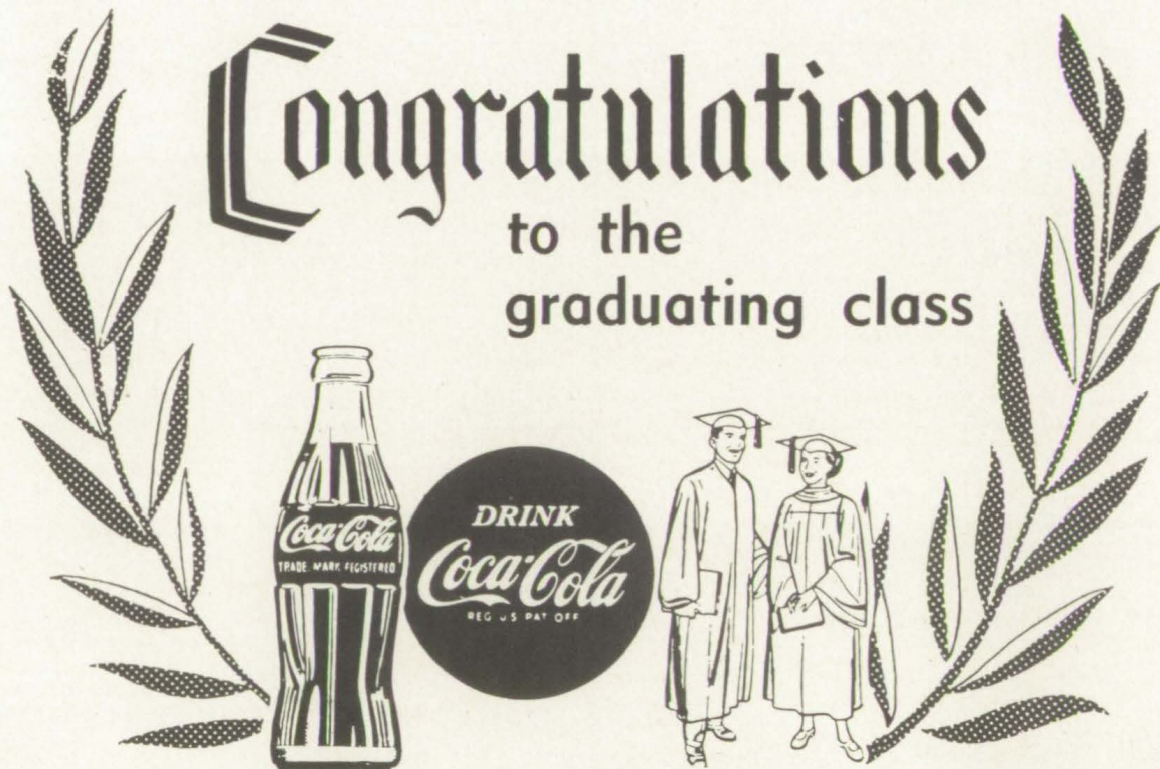
COMPLIMENTS OF

HAROLD DRUMMOND
JEWELRY, WATCH REPAIR

ALPHARETTA, GEORGIA

MILTONIANS, STAY INFORMED

READ
SCHOOL ECHOES
PUBLISHED
TWELVE TIMES A YEAR BY
JOURNALISM CLASS



BOTTLED UNDER AUTHORITY OF THE COCA-COLA COMPANY

BEST WISHES

MAXINE'S INC., INTERIORS
3319 PEACHTREE ROAD, N. E.
ATLANTA, GEORGIA

AS INDIVIDUAL AS YOUR SIGNATURE

COMPLIMENTS OF

ABC ELECTRIC COMPANY
203 WEST WIEUCA ROAD
ATLANTA 5, GEORGIA

COMMERICAL AND RESIDENTAL WIRING
PHONE BL 5-5660 GR 5-6128

COMPLIMENTS OF

ATWARD L. ANDERSON
INCOME TAX SPECIALIST

PHONE GR 5-5928

OCEE, GEORGIA

COMPLIMENTS OF

ROSWELL SEATING COMPANY

ROSWELL, GEORGIA

COMPLIMENTS OF

BLALOCK AND MULLINAX
BARBER SHOP

ALPHARETTA, GEORGIA

COMPLIMENTS OF

U. A. W. LOCAL 10
5407 BUFORD HWY.

GL 7-3128-29

DORAVILLE, GEORGIA

COMPLIMENTS OF

GORDON'S DEPARTMENT STORE
PHONE GR 5-5923

ALPHARETTA, GEORGIA

COMPLIMENTS OF

G. E. BURGESS - NOLAN E. STEPHENS

INDEPENDENT SERVICE STATION
PHONE 5822 5062

**REEDER
&
MCGAUGHEY, INC.**

"SPECIALIST IN SPORTS"

AWARD JACKETS, SWEATERS
TROPHIES AND MEDALS

SPECIAL SERVICE ON MAIL ORDERS

BROAD AND WALTON

ATLANTA 3,

GEORGIA

COMPLIMENTS OF

F. W. WOOLWORTH'S

SANDY SPRINGS PLAZA

SANDY SPRINGS,

GEORGIA

COMPLIMENTS OF

KROGER

SANDY SPRINGS PLAZA

D. L. BLANKENSHIP — MGR.

PHONE

BL 5-5250

COMPLIMENTS OF

HAWKINS FEED AND SEED, INC.



PHONE 993-2421

ROSWELL,

GEORGIA

COMPLIMENTS OF

CARLOS HENDERSON

HENDERSON T.V. SERVICE

ALPHARETTA,

GEORGIA

COMPLIMENTS OF

A AND B COINAMATIC LAUNDRY

WE DO IT, U DO IT

PHONE

475-6244

ALPHARETTA,

GEORGIA

COMPLIMENTS OF

LOVABLE BRASSIERE COMPANY

2400 PIEDMONT RD. AT GARSON DR.

ATLANTA 5,

GEORGIA

SAWNEE ELECTRIC MEMBERSHIP CORPORATION

CUMMING, GEORGIA

"A RURAL ELECTRIC CO-OPERATIVE"

"OWNED BY THOSE WE SERVE"

GUY W. FINDLEY, PRES.

C. A. BAGWELL, VICE-PRES.

HOMER A. BUICE, SEC.-TREAS.

DIRECTORS

W. F. DARNELL
HORACE C. HUGHES
L. E. MOORE

DEAN LEDBETTER
J. C. VAUGHAN, JR.
R. T. BAGLEY

COMPLIMENTS OF

MARSH BUSINESS COLLEGE

322 IVY STREET, N. W.
ATLANTA, GEORGIA

PHONE JACKSON 5-6813

COMPLIMENTS OF

T. G. SHAW AND SON

ROSWELL,

GEORGIA

COMPLIMENTS OF

A FRIEND

COMPLIMENTS OF

BURGESS MERCHANDISE

READY TO WEAR.....NOTIONS
MATERIAL

ALPHARETTA,

GEORGIA

COMPLIMENTS OF

S. W. PRUITT

AMOCO SERVICE AND GROCERIES

N. MAIN ST. GR 5-5593

ALPHARETTA, GEORGIA

COMPLIMENTS OF

ALPHARETTA BUILDER'S
SUPPLY

T. D. GRIZZLE
GR 5-5125

ALPHARETTA, GEORGIA

COMPLIMENTS OF

CRABAPPLE GROCERY
GEO. F. BATES

GENERAL MERCHANDISE
GAS AND OILS
GR. 5-5154

CRABAPPLE, GEORGIA

COMPLIMENTS OF

C. D. PEARSON'S GROCERY

HOPEWELL ROAD

GR 5-5986

ALPHARETTA, GEORGIA

COMPLIMENTS OF

REESE
SODA COMPANY

PHONE GR. 5-2814

ALPHARETTA, GEORGIA

COMPLIMENTS OF

MILTON HIGH CHORAL GROUPS

MISS ANNE LASTINGER, DIRECTOR

COMPLIMENTS OF

M. C. SHOPPE

MRS. CHARLES H. WRIGHT

ROSWELL, GEORGIA

COMPLIMENTS OF

RALPH WILSON
INSURANCE AGENCY

ALLSTATE INSURANCE

LIFE - FIRE - AUTO - SICKNESS

GR 5-5068 GR 5-5062

ALPHARETTA, GEORGIA

CONGRATULATIONS, GRADUATING CLASS
OF
MILTON HIGH SCHOOL

It's better than good...it's

fOREMOST

THE GREAT NAME IN DAIRY PRODUCTS

WHEN YOU SEE DAIRY PRODUCTS, LOOK FOR THIS TRADEMARK

COMPLIMENTS OF

**CAGLE and HENDERSON
FEED CO.**

993-2381

ROSWELL,

GEORGIA

COMPLIMENTS OF

CHADWICK'S STORE

GROCERIES AND GENERAL MERCHANDISE

GR 5-5110

ROUTE ONE

WOODSTOCK,

GEORGIA

COMPLIMENTS OF

**ECONOMY AUTO STORE
AND
ROSWELL AUTO STORE**

E.L. BUICE, OWNER

ROSWELL,

GEORGIA

COMPLIMENTS OF

PARSON'S

DULUTH, CUMMING, BUFORD

FLOWERY BRANCH, NORCROSS

COMPLIMENTS OF

CARROLL REALTY COMPANY

PHONE GR 5-5482

ALPHARETTA,

GEORGIA

COMPLIMENTS OF

THE DUTCH MILL

DULUTH,

GEORGIA

COMPLIMENTS OF

MILTON HIGH



FUTURE FARMERS OF AMERICA.

COMPLIMENTS OF

DIAL CLEANER AND LAUNDRY

3426 SHALLOWFORD ROAD
BUFORD HWY - CHAMBLEE, GA.
PHONE GR 7-7463

285 MT. VERNON HWY
SANDY SPRINGS, GA.
PHONE BL 5-0815
44 CEMETERY ST., GR 5-5736

ALPHARETTA

GEORGIA

COMPLIMENTS OF

ROSWELL CLEANERS

993-6396

COMPLETE LAUNDRY AND DRY CLEANING

ROSWELL,

GEORGIA

COMPLIMENTS OF

THOMPSON AND NEWTON
GROCERY

ALPHARETTA,

GEORGIA

COMPLIMENTS OF

ARCHIE LINDSEY REALTY
FARMS - HOMES - ACREAGE

PHONE 993-4136

ROSWELL,

GEORGIA



Best wishes
for a
wonderful future!

...IT'S YOURS WITH *Southern Bell*



COMPLIMENTS OF

L AND L GAS
COMPANY

CANTON,

GEORGIA

TEXACO

SERVICE STATION



ALPHARETTA,

GEORGIA

AD CLUB

BECKY WINFREY

BOBBY ALLEN

JACKIE COCHRAN

ELOISE THOMPSON

JOAN BYRD

EVELYN BENNETT

SANDRA FOSTER

BOBBY COLEMAN

PATRON'S PAGE

2ND PERIOD GOV'T. CLASS

ROGER AND MARIE

2ND PERIOD FRENCH CLASS

ALBERT PIRKLE AND MARGARET

FOSTER AND BONNIE

RAY AND LYNN

PINKY AND BRENDA

JACKIE AND MARGIE

BECKY

WARREN J. KENERLY

JIM AND LIZ

BOBBY AND JACKIE

MR. AND MRS. HAWKINS

MR. AND MRS. BEAVERS

ANNUAL STAFF

SPONSORS, ANNUAL STAFF

DOUG AND BRENDA

GEORGE AND PAT

CLIFFORD AND JIMMY

THE GIFT SHOP

GORDON SMITH

ROBBY AND SANDRA

WAYNE AND JOYCE

KENNETH AND ANITA

RAY AND RITA

BOB HOPE AND CAROLYN

LEON AND RAY

MR. CARL McGRADY

MR. AND MRS. HAROLD THOMPSON

LAMAR AND PHYLIS

BELITA AND CAROL

MORRIS MAJOR

FRANK COX

WOLF MARTIN

RONALD E. ELLIOTT

MRS. GWEN SHUFELT

MRS. ELKINS

MR. BATSON

MISS McLEMORE

MR. AND MRS. JOHN DICKERSON

MISS CRAWFORD

MR. BURGESS

MR. HANSARD

FRANCES AND BOYD

ELOISE AND JACK

CO-PRESIDENTS

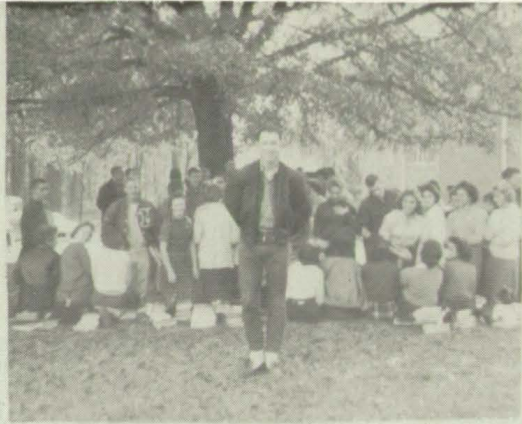
3RD. PERIOD TRIG. CLASS

GALE WALKER





"Blue Monday"



"I'm Looking for Someone to Love"



"You Talk Too Much"



"To the Aisle"



STEADY
THREE



"School Days"



"Chills and Fever"



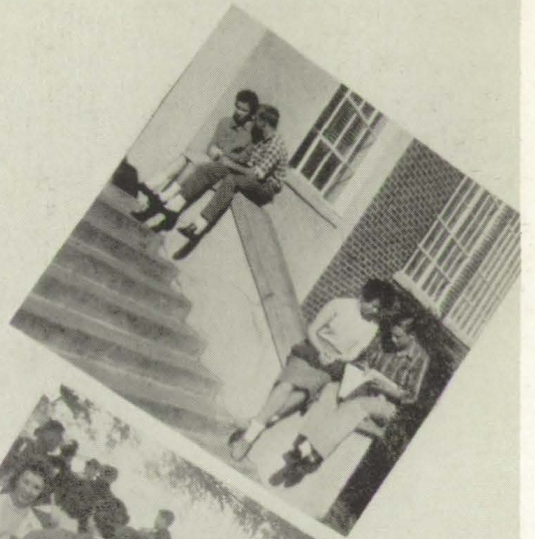
"Cool Clear Water"



"Let The Good Times Roll"



"Splish, Splash"





COME ON EAGLES,
Let's WIN!



Bathing Beauties??



This Teaching Is HARD WORK!



BEHAVE! FOSTER



Sew HAPPY



Go Eagles, Go!



Now, Jerry



We're A Happy Bunch



Is There Something ON YOUR MIND?



TIME To GO HOME



OUR SENIOR MAMMAS



As I WAS SAYING.....



BETAS Enjoyed SPIVEY

LOOK HOW WE'VE CHANGED!



GUESS WHOSE LEGS



