

Site of Merrimack Manufacturing Company  
Foot of Dutton Street (now off French Street Extension)  
Incorporated 1822

TABLE OF CONTENTS

Research Report:

Frontispiece	
Early History: 1821-1826	1
Millyard Development: 1823-1835	2
Company History and Millyard Development: 1836-1860	3
Civil War Period: 1861-1865	4
Millyard Development: 1866-1890	4
Corporate and Millyard History: 1891-1930	5
Corporate and Millyard History: post-1930	6
Archeological Comment	7
Figures (1-36)	
Footnotes	8
Bibliography	9

Inventory Forms:

Site of Dressing Mill (Union National Bank Office)  
Site of part of Millyard (Merrimack Plaza Apartments)  
Weave Shed between Tilden and Tremont Streets

Research Report  
Site of the Merrimack Manufacturing Company  
Foot of Dutton Street (now off French Street Extension)  
Incorporated 1822

Early History: 1821-1826

The Merrimack Manufacturing Company was organized on February 6, 1822 "for the purpose of manufacturing and printing cotton goods" (1). The Founders of the company included Ezra Worthen, Nathan Appleton, Paul Moody, Kirk Boott and John W. Boott. These "capitalists of prominence" had visited East Chelmsford (later Lowell) in the fall of 1821. Their purpose was to determine the area's potential as a development site for mills, whose motive power would be derived from water. These gentlemen saw "the advantage afforded by the powerful current of the Merrimack River" (2). On December 1, 1821, Nathan Appleton and Patrick Tracy Jackson each subscribed 180 shares. Kirk and John Boott bought 90 shares, and Paul Moody 60 shares. Subsequently, nine other investors were allowed to purchase shares: Dudley Atkins Tyng, Warren Dutton, Timothy Wiggin, William Appleton, Eben Appleton, Thomas M. Clark, Benjamin Gorham, Nathaniel Bowditch and Daniel Webster (3).

Prior to the incorporation of the Merrimack Company, water privileges had to be procured and a sizeable parcel of land had to be assembled to effectively accommodate this visionary enterprise. Complete control of the Merrimack River was achieved via the buying up of the stock of the Proprietors of Locks and Canals on Merrimack River. The cost of the shares was \$30,217 (4). Kirk Boott and Thomas M. Clark were engaged "to buy up the East Chelmsford farmlands which are now downtown Lowell. The Tyler, Fletcher and Cheever farms cost them \$18,339" (5). In all, 400 acres were purchased for the new company. The capital at the start was \$600,000 and the company's first president was Warren Dutton (6).

The Merrimack Manufacturing Company was in operation within two years of its founding. On September 1, 1823, the first mill building was opened and water was let into the Merrimack Canal. The motive power "was furnished, as in all mills of those days, by the old fashioned breast wheel" (7). The first cloth was turned out in November of 1823. The first

shipment of goods consisted of sixteen bales and was sent to Boston, Jan. 3, 1824. The first advertisement of this company's goods appeared in the Newburyport Herald in 1824. One David Noyes, trader, announced that he had received for sale "one hundred and eleven yards of Merrimack fine sheetings, the first of the kind made on our river" (8).

By 1825, after two years of operations a new corporate set-up was instituted for the Merrimack Company. On January 2, 1826, the Merrimack Manufacturing Company "conveyed to the Proprietors of the Locks and Canals all its real estate in East Chelmsford, and simultaneously took back a deed of the area occupied by its mills" (9). Thus the Merrimack Company divested itself of the responsibility of constructing new mills, digging new canals and building new machinery.

#### Millyard Development: 1823-1835

The mills and print works of the Merrimack Manufacturing Company were located on the southern banks of the Merrimack River. The company's tract, which would eventually total twenty four acres, was roughly in the shape of an inverted "L". The company's parcel extended from Tilden Street on the west to the wasteway separating the property from that of the later Boott Cotton Mills on the east. The shore line of the Merrimack River formed the northern boundary. The irregular southern boundary ran perpendicularly to the northern termini of the company's "boarding house" streets-- Colburn, Prince, Worthen and Dutton. Farther to the east the Merrimack Canal and Anne Street terminated at the mill-yard where the Counting House, No. 3 Mill and the Grist Mill would be built.

The first Merrimack mill building was completed on September 1, 1823. In February of 1822, the Boston Manufacturing Company built for the new mill "ninety-two frames, with sixty four spindles each, half for spinning warp and the other half for spinning fillings, as well as all the machinery needed to warp, dress, and weave the yarn into cloth" (10). The price of equipping its first mill cost the Merrimack Manufacturing Company a total of \$164,764. The second mill was begun in 1824 and upon completion was outfitted with machinery which had been brought from Waltham. In 1825 a third mill structure was erected. Its machinery was made locally in the Proprietors of Locks and Canal's Machine Shop. Paul Moody supervised the machinery's construction.

By the summer of 1826, the Merrimack Manufacturing Company "had nearly finished five factories, of which three were in active operation, as well as two print works" [Fig. 1] (11). The establishment of the Merrimack Print Works [Fig. 2] had been part of the original scheme to introduce calico printing. Soon after the print works opening in 1826, calico printing "proved a profitable investment and showed conclusively that calico prints could be made much cheaper and better in this country than in England" (12).

In 1826 the company was using cotton at the rate of 450,000 pounds annually and was making of it about 2,000,000 yards of goods. The cloth was "well bleached and about 3/4 of it was dyed and printed". By 1860 the annual production of cloth had risen to 21,438,214 yards.

Situated to the south of the Merrimack Company millyard were the company's boarding houses, which were at first semi-detached and made of wood [Fig. 3], later built in brick rows [Figs. 4, 5, 6]. These simple vernacular structures largely housed the company's female employees. The number of female employees would increase from "not more than 150" in 1823 to several thousand in the 1880s.

By 1832 the millyard was occupied by storehouses, stables, and repair shops, as well as the original mill and print shop structures. In all, the 1832 map shows fifteen buildings in the Merrimack millyard.

#### Company History and Millyard Development: 1836-1860

Production statistics [Fig. 7] and an engraved view and map [Fig. 8] attest to the prosperity of this company in the 1830s, '40s and '50s. In 1837 the Merrimack Manufacturing Company produced 10,140,068 yards of cloth, 15,516,724 yards in 1850 and 21,694,320 yards by 1860. Only the Massachusetts Cotton Mills, after incorporation in 1839, consistently exceeded the Merrimack's yearly cotton cloth output. The Boott Mills was the Merrimack's and Massachusetts' Cotton Mills closest competition in the Lowell field of eleven major mills. By 1851 the capital of the company was \$2,500,000.

The productivity of the company was reflected by the increase in the number of structures on its property. The 1841 map shows a two-fold increase of company buildings from the

fifteen which appeared on this site in 1832.

A view of the Merrimack millyard [Fit. 8] which appears on the border of the Sidney and Neff 1850 Lowell map presents a kind of industrial ideal--an orderly, beautifully landscaped and well-maintained factory complex. Grassy plots, trees, and four story mill buildings topped by picturesque cupolas, promote a sense of human scale.

Indeed the pre-Civil War appearances of the complex justifies the assertions of historians who claimed that the company was genuinely interested in the well-being of its employees.

Several buildings, constructed during the 1830s and '40s, and '50s, survived into the twentieth century. They included the Counting House [Figs. 9, 10] and the Grist Mill [Fig. 11]. The Counting House or office was built in 1846. The Grist Mill was built between 1852 and 1866.

#### Civil War Period: 1861-1865

The Civil War temporarily curtailed the productivity of Lowell's mills. That the number of yards of cotton cloth produced per year by the Merrimack Company was greatly reduced is evident from statistics for 1861-1865. In 1861 the yards of cloth produced totalled 21,694,320; 12,694,320 in 1862; 3,623,054 in 1863 and a low of 526,737 in 1864. Pre-War cotton cloth production levels were not equalled until 1869. In 1861 the company began to list separately printed cloth. In 1861, 38,168,550 yards of printed cloth was produced. By 1864, production dropped to 1,040,130. During the war years the Hamilton, Suffolk, Tremont, Lawrence and Lowell mills apparently ceased operations completely.

#### Millyard Development: 1866-1890.

Symbolic of the Merrimack Manufacturing Company's post-war recovery were the additions to the Mill No. 6 (built 1846) in 1873 [Fig. 16] and to Mill No. 3 (built 1863) in 1872. Mill No. 3 [Fig. 17], also known as the Dressing Mill, was for many years a prominent Lowell landmark. Located on the French Street site of the present Union National Bank, its tall brick bell tower was a picturesque focal point at the northern terminus of the Merrimack Canal [Figs. 18, 19, 20].

Between 1878 and 1888, more new Merrimack Company buildings were erected than in any other decade of the nineteenth century. These new buildings included several storage facilities, a Color and Engraving Building (1878), Bleachery (1880), Dye House (1880), Ageing and Steaming Building (1885), Freight and Storehouse No.3 (1881), and a Finishing Mill, which was completed in 1879. The most visible new Merrimack structure was the "Jumbo" chimney [Fig. 23]. The new chimney was for a time the tallest in the country, at 283 feet (13).

By the time of "Jumbo's" completion in 1883, Merrimack was approaching the zenith of its productivity. In 1874 the company produced 25,651,478 yards of cotton cloth, and 45,848,380 yards of printed cloth. By 1890, 52,000,000 yards of cotton cloth and 98,984,296 yards of printed cloth issued forth from the Merrimack mills and print works. For most of the late nineteenth century, Merrimack outdistanced the rival Massachusetts Cotton and Boott Mills by substantial margins of cotton cloth yardage. In 1884 Merrimack had "the largest payroll and pays the largest tax of any corporation in the city; owns 24 acres of land, gives employment to 2,200 females and 1,100 males...shipment is made to all parts of the world" (14).

#### Corporate and Millyard History: 1891-1930

At the turn of the century the Merrimack Manufacturing Company relocated some of its operations to Huntsville, Alabama. The South offered cheaper labor and a closer access to raw materials. Futhermore, the location of mills was no longer proscribed by proximity to the falls of a river, as steam was superseding water power. By 1910 only a quarter of the company's operation in Lowell was powered by water. The remaining three quarters were steam powered.

Merrimack's dependency on steam power in the early twentieth century is underlined in an account of a fire which caused \$100,000 worth of damage to Merrimack property. On July 20, 1903, a fire destroyed and damaged structures in the northwest corner of the Merrimack yard. It was noted in a newspaper account that the "print works are almost entirely shut down, but the mill is otherwise not crippled to any great extent. The water power will be drawn upon to the fullest extent as a substitute for steam until the boilers are again in operation...there were fifteen boilers in the boiler house

of the Merrimack and with the exception of two of these the whole number was crippled. All the pipes leading from the boilers were melted as a result of the heat, but the boilers themselves were not greatly damaged being encased in solid bricks" (15). Besides the boiler house, a stable and a long rectangular coal shed were consumed in the conflagration. This fire was but a minor setback in an era of continued expansion of company facilities (1890-1910). The 1896 Atlas [Fig. 25] and 1906 Atlas [Fig. 26], along with an insurance survey plan of 1910 [Fig. 27] display new structures such as the Engine and Singeing House (1893), Blue Dye House (1893), Storehouse No. 2 (1891-1899), Waste House (1908) Fustian Dye House (1910) and the No. 7 Mill (1910)--the last Merrimack mill to be built.

No new structures of any consequence were erected on Merrimack property after 1910. The 1924 Atlas and Locks and Canals photographs taken in 1928 show the melange of nineteenth and early twentieth century structures still intact before the onslaught of post-1930 demolition [Figs. 30, 31, 32A, B, C]. By 1920 the Merrimack Manufacturing Company had a capital of \$4,400,000. The products made in its mills included "corduroys, velveteens, khakis, miscellaneous goods, etc."

#### Corporate and Millyard History: post-1930

An early stage of the Merrimack's post-1930 demoliton is shown in the tearing down of a storehouse in March 1933 [Fig. 33]. During the 1930's the textile industry continued to decline until by 1940 only three of Lowell's original eleven major mills were still in operation: Lawrence, Boott and Merrimack. In 1952 the Merrimack Manufacturing Company was reorganized (16). From 1958 until 1962 a more rapid and methodical obliteration of the Merrimack millyard was effected.

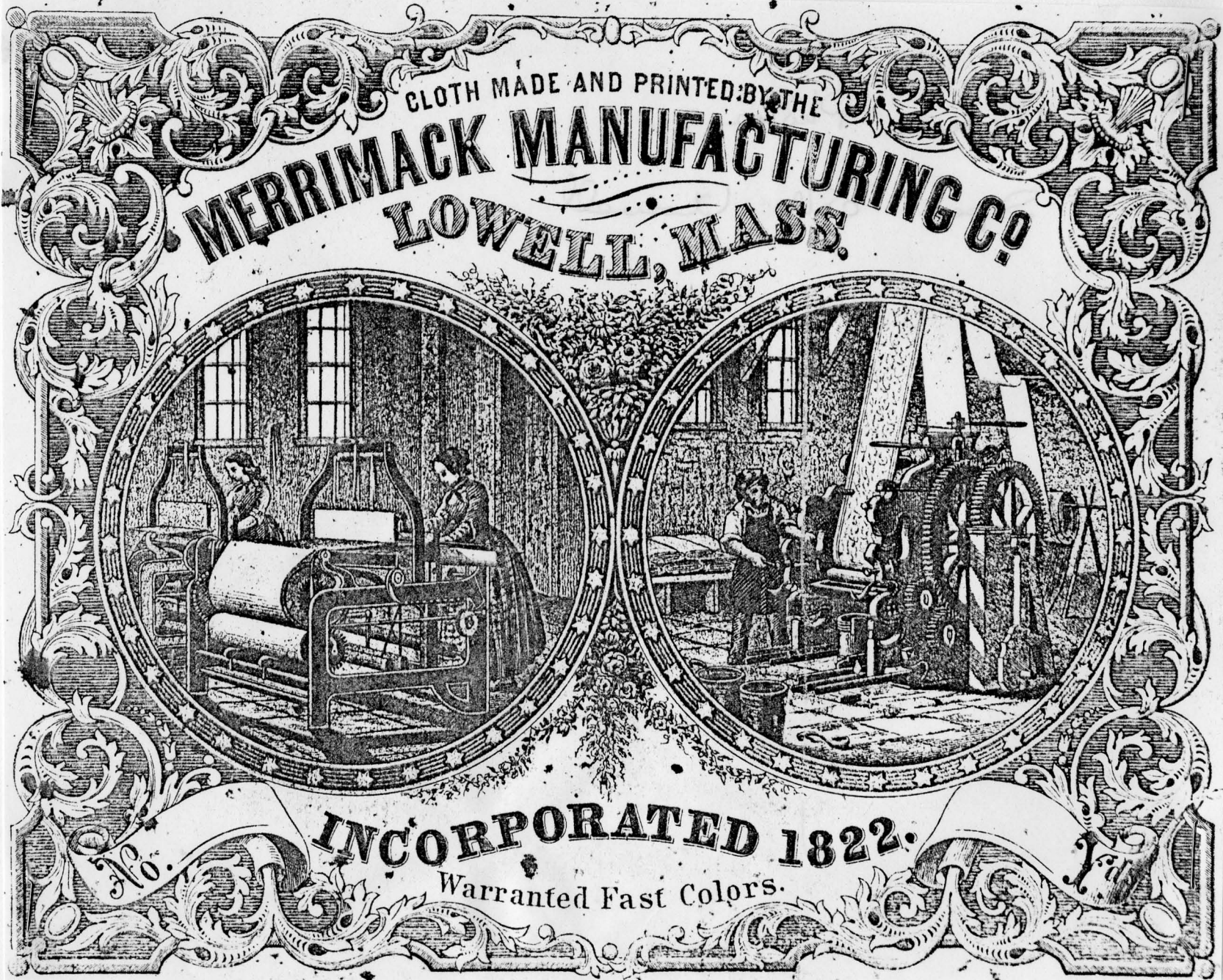
In 1959 the address for the Merrimack Manufacturing Company is listed as foot of Dutton Street and 12 Perkins Street. Apparently the Merrimack Company rented a Perkins Street building in the Lawrence Manufacturing Company yard. In the final directory listing for Merrimack in 1961, only the Perkins Street address is listed. Figures 35 and 36 show the Merrimack Company building's in 1958--Mill No. 3 and the Grist Mill had disappeared and their outlines are visible on the expanded parking lot. The rest of the millyard, as well as the company-built housing was razed in the early 1960s.

At the present time (Fall 1979) the site of Lowell's oldest manufacturing company is largely covered by parking and vacant lots. On the site of the No. 3 or Dressing Mill stands a bank branch, built in 1967. On the site of Mill No. 1, No. 2 and No. 6 are the three high-rise apartments of Merrimack Plaza. Only the Weave Shed along Tilden Street, purchased from the Suffolk and Tremont Mills by the Merrimack Company, remains of the mill complex which is so inextricably bound with the origins of the city of Lowell.

#### Archeological Comment

The boundaries of the LHPD and the probable archeological potential of the Merrimack site stand somewhat in opposition to one another. Those areas that have received the least redevelopment since the 1960's razing of the yard--especially the undeveloped parcel east of Post Office Square--are excluded from the LHPD. Former Merrimack millyard and housing sites within the District tend to be the ones recently redeveloped, such as the High School Annex, Union National Bank, and Merrimack Plaza Apartments sites. The large parking lot north of the bank may cover millyard remains, as could the areas between the various buildings. Among the city's, and especially the LHPD's, former millyards, Merrimack ranks low in surface evidence of the earlier development.





Frontispiece

Packing label for cloth of the Merrimack Manufacturing Company. U. of Lowell Library, Special Collections, document file.

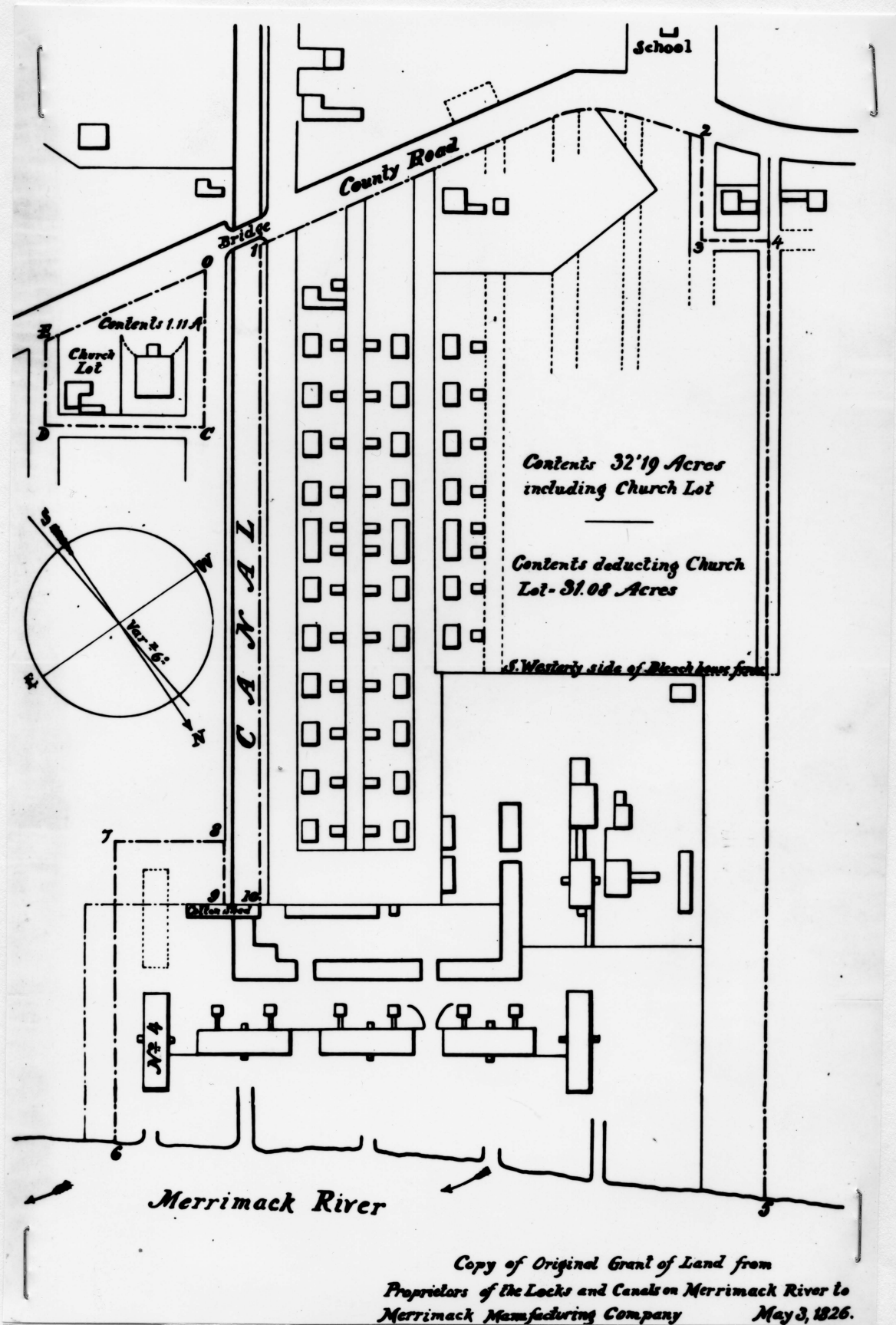


Figure 1

"Copy of Original Grant of Land from Proprietors of the Locks and Canals on Merrimack River to Merrimack Manufacturing Company May 3, 1826." The plan records the millyard as initially developed, and the company-owned housing west of the Merrimack Canal. Proprietors of Locks and Canals Archive, Boott Mills. Photo courtesy of HAER.

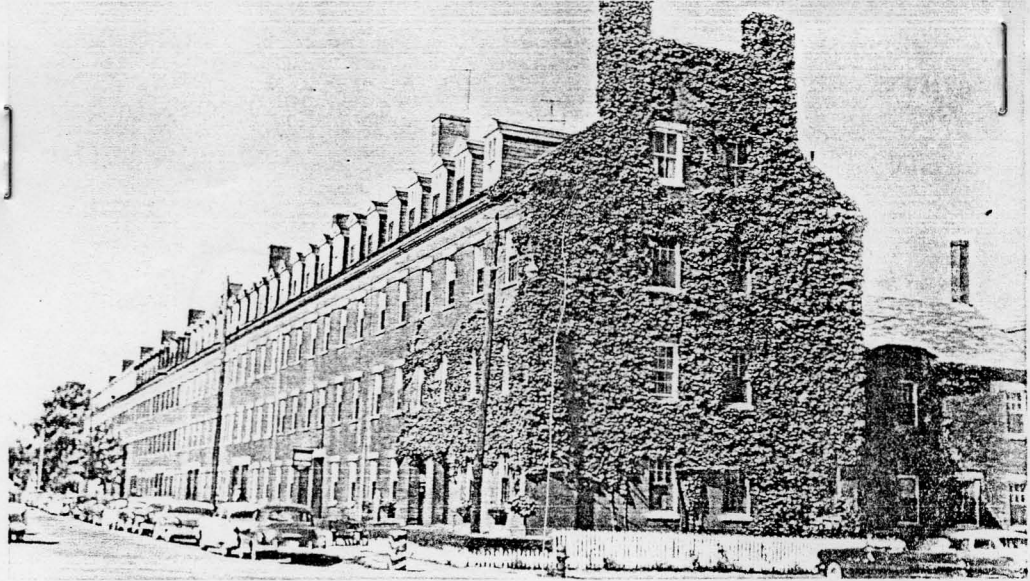


Figure 2  
View of the "Merrimack Print-Works," from the 1850 Sidney and Neff map of Lowell.



Figure 3  
Frame and brick boarding houses of the Merrimack Manufacturing Company, facing the Merrimack Canal at #33, 34, 35 Dutton Street. Photo taken April 27, 1936. U. of Lowell Library, Special Collections, Locks and Canals photo #2934.

35. Dutton Street, New Block, ivy-clad



34. Dutton Street, New Block

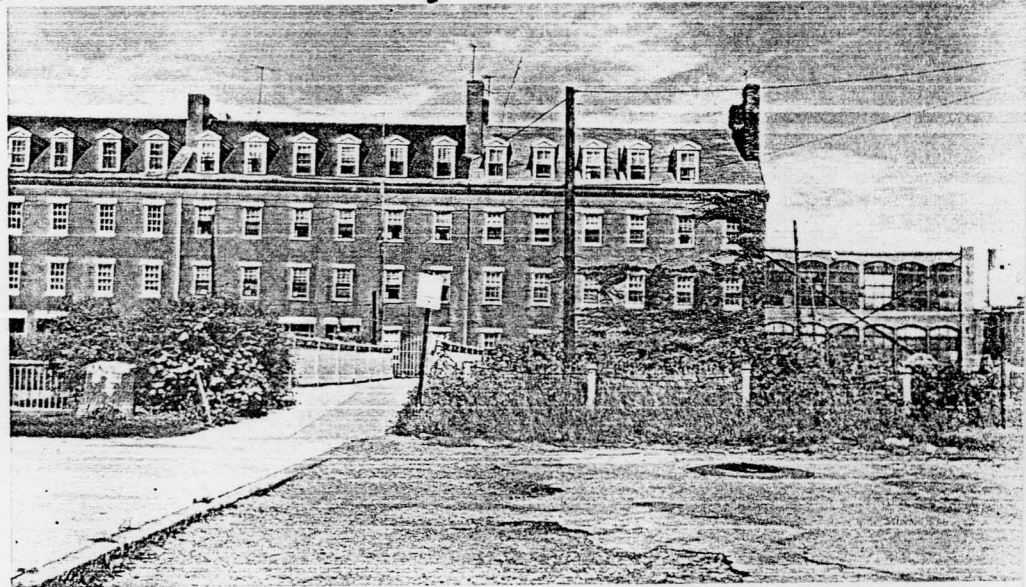
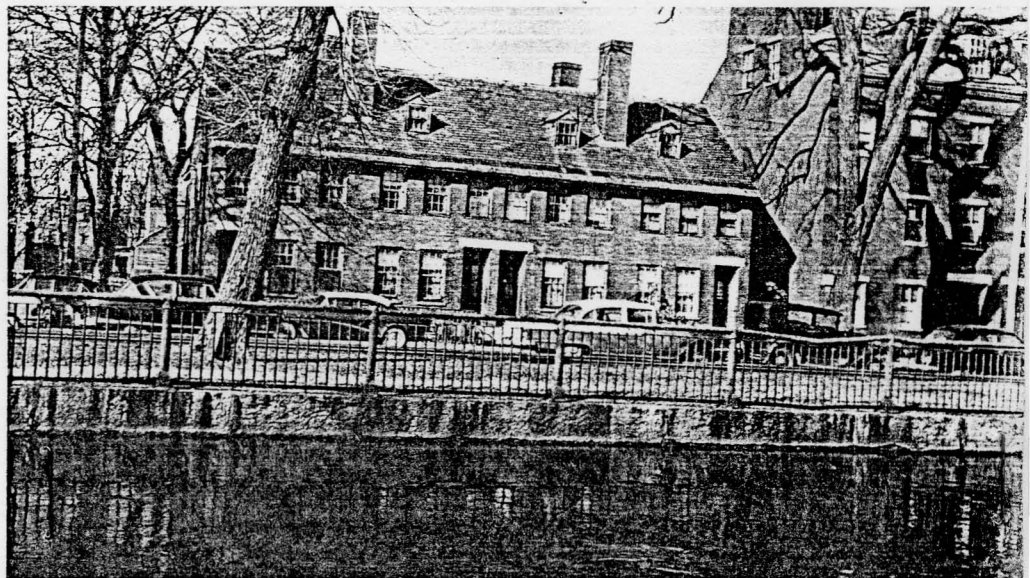
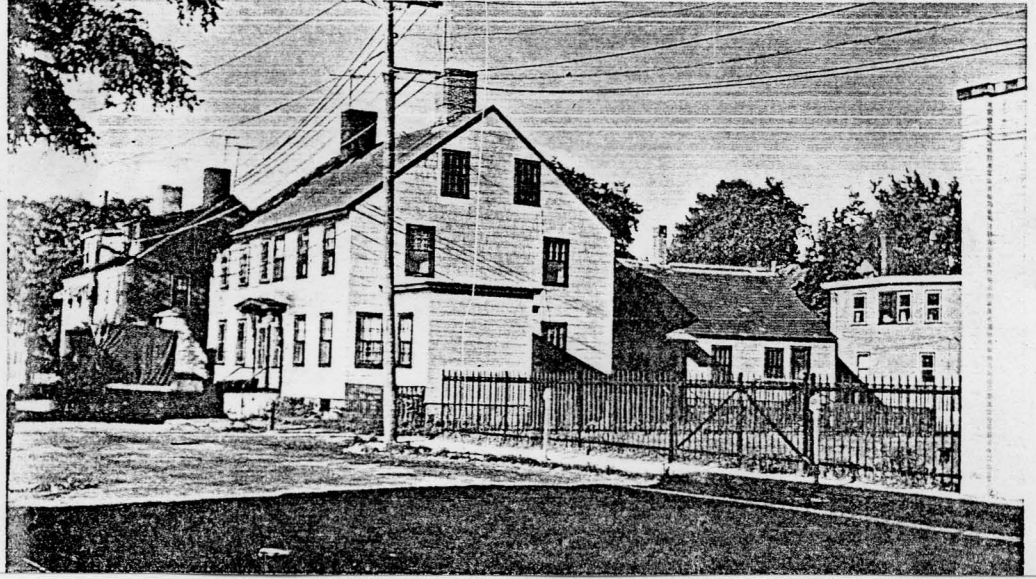


Figure 4  
Merrimack Mfg. Co.  
boarding houses  
along Dutton Street,  
photographed in the  
late 1950s, not long  
before their demo-  
lition. U. of Lowell  
Library, Special  
Collections,  
"Christmas Card Box."

33. Dutton Street



46. Worthen Street, 84-86.

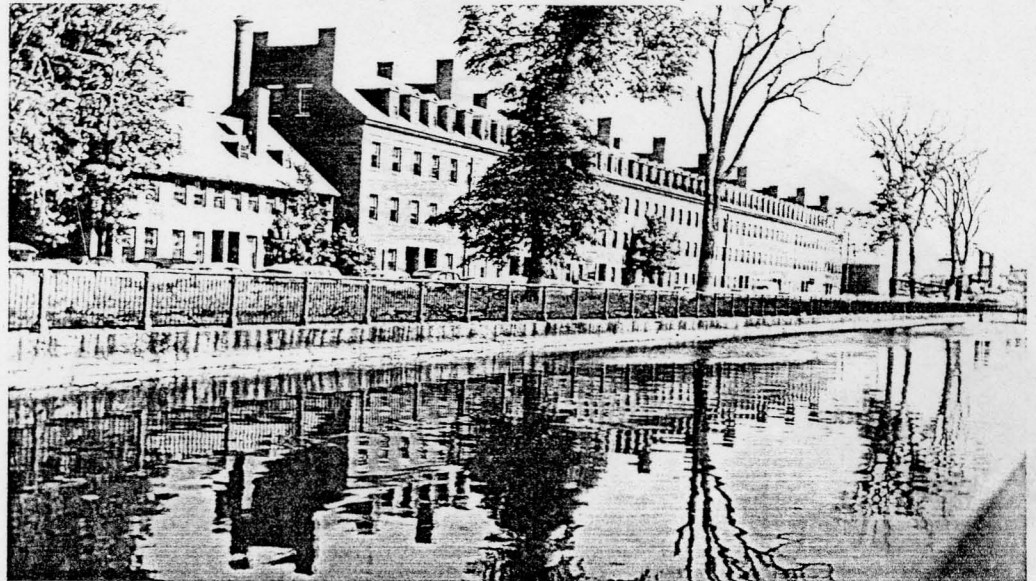


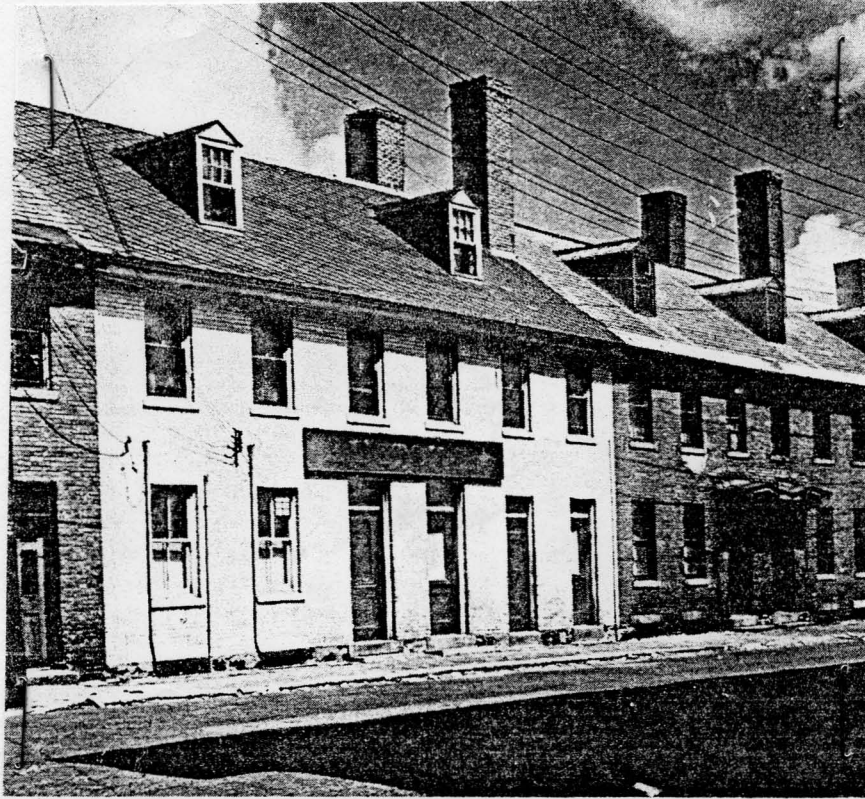
45. Worthen Street, 83-85.



Figure 5  
Merrimack Mfg.  
Co. boarding  
houses, photo-  
graphed in the  
late 1950s.  
U. of Lowell  
Library,  
Special  
Collections,  
"Christmas  
Card Box."

36. Dutton Street, New Block, reflected.





*Fig. 18. "John Bull's Row," Lowell, Built ca. 1827  
(Noyes)*

Figure 6  
Merrimack Mfg. Co. boarding houses on Prince Street, called "John Bull's Row" after the English calico workers who resided there. Neither the row nor the street now exist. From John Coolidge, Mill and Mansion, 1942.





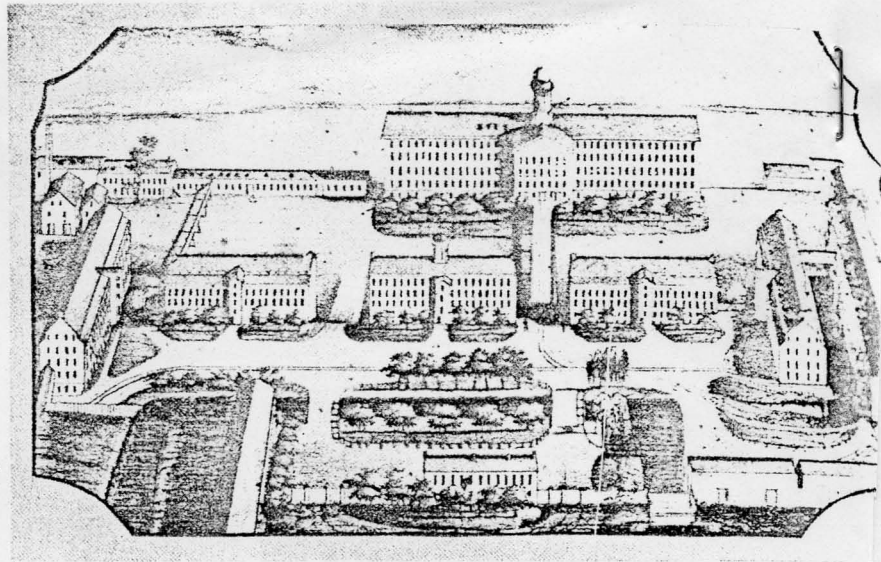


Fig. 2. The Plant of the Merrimack Manufacturing Company ca. 1850

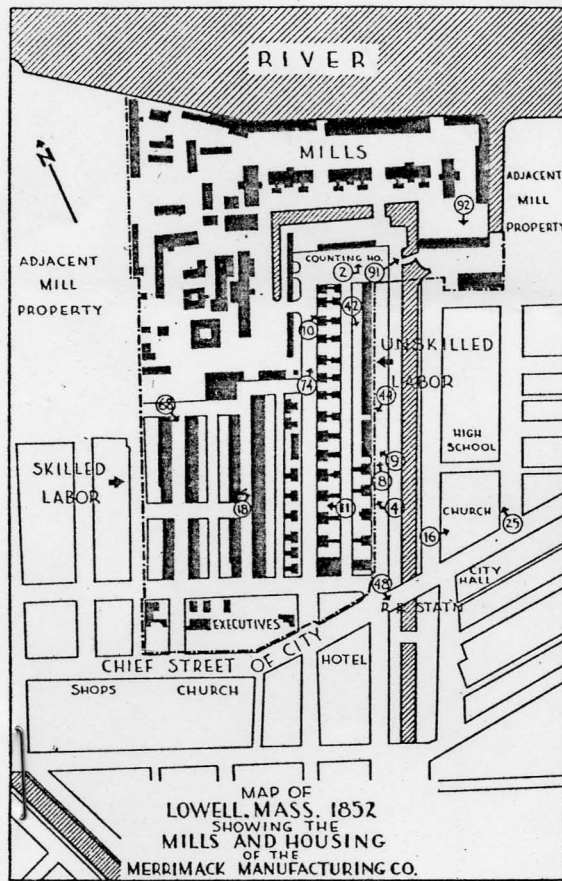


Fig. 3.  
A Map of Part of Lowell ca. 1852, Showing the Plant and Housing of the Merrimack Manufacturing Company and Adjacent Property (Moulthrop)

Figure 8

View of the Merrimack Mfg. Co. millyard in 1850 (from Sidney & Neff map) and plan of the company's millyard and housing, ca. 1852. Coolidge, Mill and Mansion, 1942.

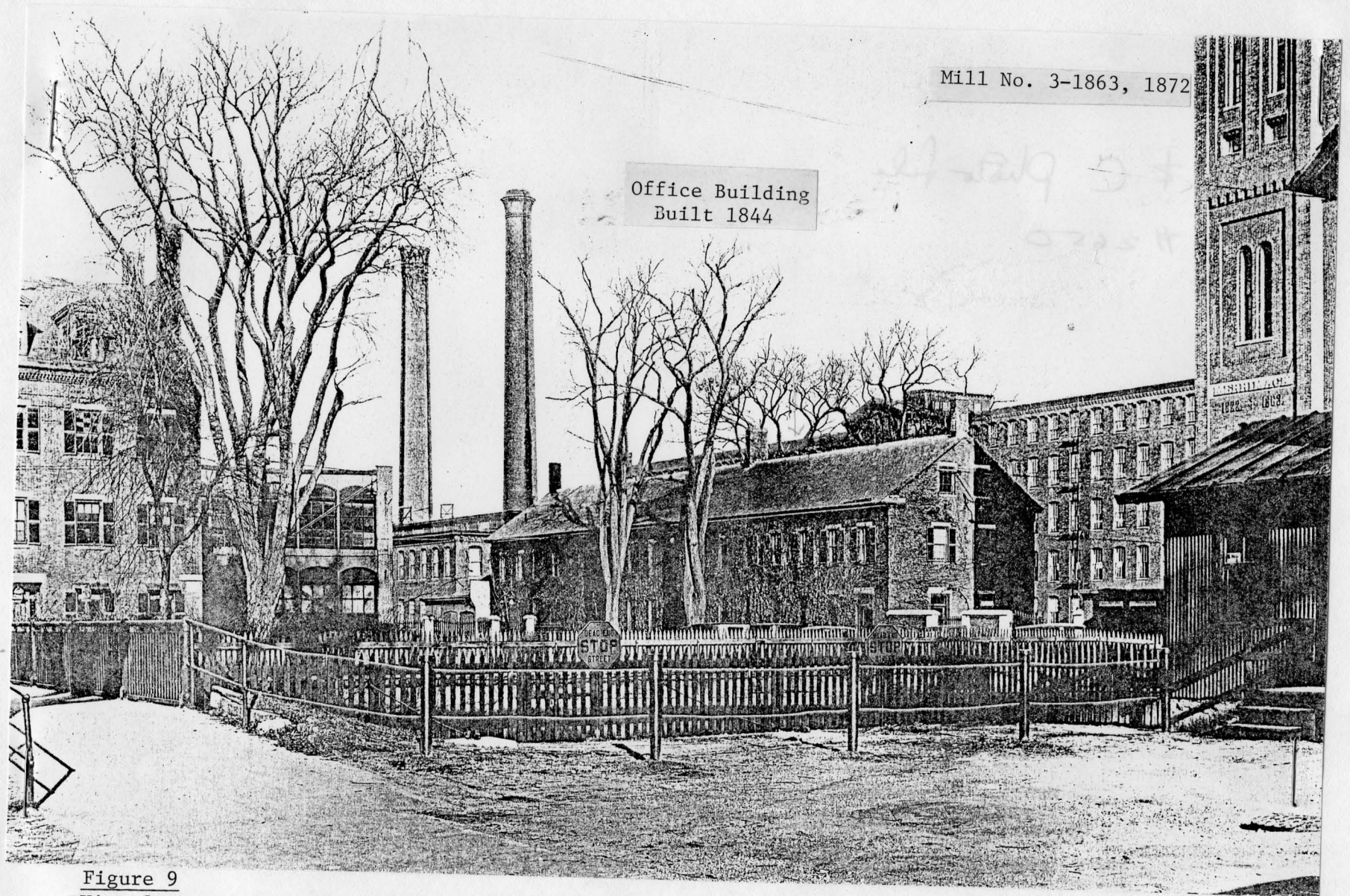


Figure 9

View from the southeast on French Street of Merrimack Mfg. Co.'s office or "Counting House," built 1844. Note the Dressing Mill tower at the far right, Mill No. 2 behind the Counting House. The picket fence encloses the northern terminus of the Merrimack Canal. Photo dated January 26, 1932. U. of Lowell Library, Special Collections, Locks and Canals photo #2650.

*62. Merrimack M'f'g Co. Counting House*

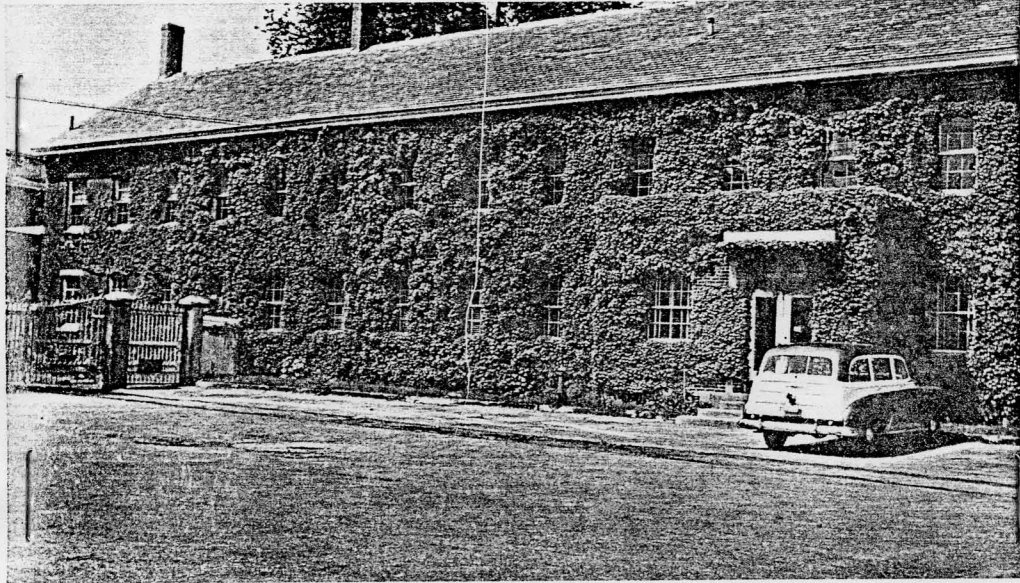
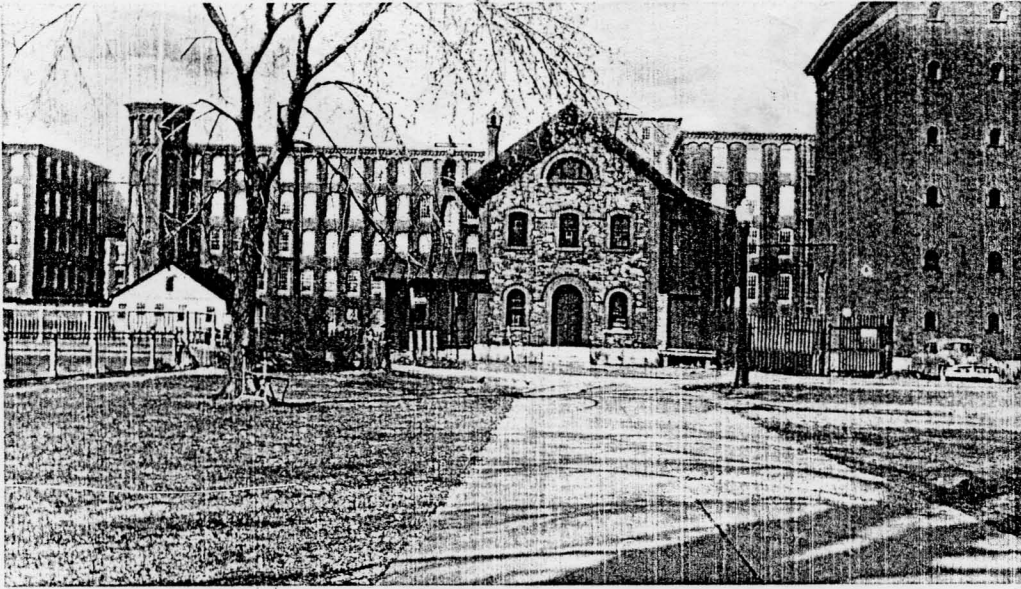


Figure 10

View of the Counting House in the late 1950s, prior to demolition in the early 1960s.

U. of Lowell Library, Special Collections, "Christmas Card Box."

60. Merrimack Mfg. Co.



4-7. Anne Street Grist Mill

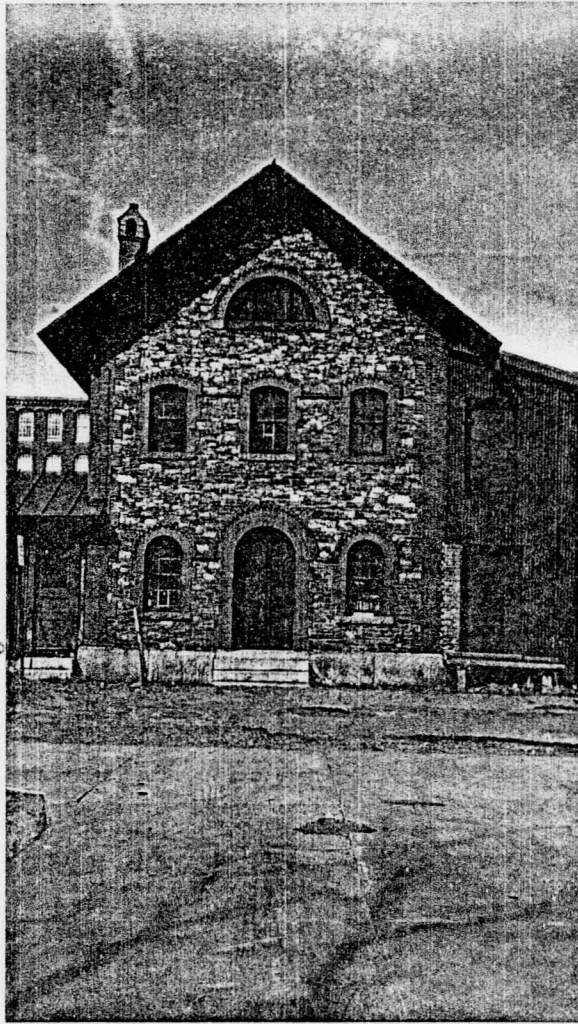


Figure 11

Two views from the south of the Grist Mill on the premises of the Merrimack Mfg. Co., built ca. 1852-1866. Photographed in the late 1950s, shortly before demolition. Note that the Dressing Mill (No. 3 Mill) has already been demolished. Mill No. 1 appears to the rear of the Grist Mill.

## MANUFACTURING COMPANIES.

**Merrimack Manufacturing Company.** Incorporated in 1822; capital, \$2,500,000. Number of Mills 6, and Print Works. Number of spindles, 69,216; looms, 2,103. Females employed, 1,633; males, 622. Isaac Hinckley, *Agent*. John D. Prince, *Superintendent Print Works*. T. G. Gerrish, *Paymaster*.

**Hamilton Manufacturing Company.** Incorporated in 1825; capital, \$1,200,000. Number of Mills 4, and Print Works. Number of spindles, 40,000; looms, 1,148. Females employed, 940; males, 307. John Avery, *Agent*. D. G. Lang, *Paymaster*. Wm. Spencer, *Superintendent Print Works*. B. Walker, *Paymaster*.

**Appleton Company.** Incorporated in 1828; capital, \$600,000. Number of Mills, 2; number of spindles, 17,920; looms, 600. Females employed, 400; males, 120. George Motley, *Agent*. A. H. Robinson, *Paymaster*.

**Lowell Manufacturing Company.** Incorporated in 1828; capital, \$1,500,000. Number of Mills, 3—one spinning, one carpet, and one cotton. Number of spindles, 4,200 wool, and 7,142 cotton; looms, 220 cotton and 124 carpet. Females employed, 550; males, 225. Alexander Wright, *Agent*. Wm. S. Salmon, *Paymaster*.

**Middlesex Company.** Incorporated in 1830; capital, \$1,000,000. Number of Mills 4, and 3 dye houses. Number of spindles, 16,340; looms, 75 broadcloth, 328 cassimere. Females employed, 930; males, 575. Wm. T. Mann, *Agent*. S. D. Sargent, *Paymaster*.

**Suffolk Manufacturing Company.** Incorporated in 1830; capital, \$600,000. Number of Mills, 2; number of spindles, 14,448; looms, 443. Females employed, 400; males, 100. John Wright, *Agent*.

**Tremont Mills**, (located on Suffolk and Tremont streets). Incorporated in 1830; capital, \$600,000. Number of Mills, 2; number of spindles, 14,560; looms, 517. Females employed, 400; males, 100. Charles L. Tilden, *Agent*. Charles Battles, *Paymaster*.

**Lawrence Manufacturing Company.** Incorporated in 1830; capital, \$1,500,000. Number of Mills, 5; number of spindles, 44,800; looms, 1,260. Females employed, 1,200; males, 200. Wm. S. Southworth, *Agent*.

**Lowell Bleachery.** Incorporated in 1832; capital, \$262,000. Number of females employed, 20; males, 250. Charles A. Babcock, *Agent*. Henry H. Carroll, *Paymaster*.

**Foot Cotton Mills.** Incorporated in 1835; capital, \$1,200,000. Number of Mills, 5; number of spindles, 48,472; looms, 1,432. Females, 870; males, 262. Yards made per week, 300,000. Linus Child, *Agent*. J. F. Troit, *Paymaster*.

**Massachusetts Cotton Mills.** Incorporated in 1839; capital,

## MANUFACTURING COMPANIES.

**Merrimack Manufac'g Co.**  
*Foot of Dutton St.*

Incorporated 1822.

Commenced operation, 1823.

Capital, \$2,500,000.

Spindles, 85,840.

Looms, 2303.

Number of Overseers, 30.

Males employed, 703.

Females " 1428.

Kind of goods made: Prints,  
No. 28 to 35.

Treasurer, F. B. Crowninshield.

Agent, Isaac Hinckley.

Superintendent, J. L. Cheney.

Paymaster, Thos. G. Gerrish.

Superintendent Print Works,

Henry Burroughs.

Paymaster Print Works, Edward Tufts.

Pay Day, Saturday before 16th.

**Hamilton Manufac'g Co.**

*Jackson Street.*

Incorporated, 1825.

Commenced operation, 1826.

Capital, \$1,200,000.

Spindles, 48,328.

Looms, 1382.

Number of Overseers, 21.

Males employed, 400.

Females " 850.

Kind of goods made: Prints,  
Flannels, Ticks and Sheetings.

Agent, John Avery.

Paymaster, D. G. Lang.  
Treasurer, Wm. B. Bacon.  
Superintendent Print Works,  
Wm. Spencer.

Paymaster, Benj. Walker.  
Pay day, last Saturday but  
one in the month.

**Middlesex Manufac'g Co.,**

*Warren Street.*

Incorporated, 1830.

Capital, \$500,000.

Spindles, 6340.

Looms, 200 broad,  
200 narrow.

No. of Overseers, 21.

Males employed, 575.

Females " 730.

Kind of goods made, Broad-  
cloths, Sackings, Beavers, Sat-  
inets, Shawls.

Agent, O. H. Perry.

Treasurer, R. S. Fay, Jr.

Paymaster, S. D. Sargent.

Pay-day, week following the  
fourth Friday.

**Prescott Cotton Mills.**

*Merrimack Street.*

The Prescott Mills are own-  
ed by the Massachusetts and  
the statistics are given to-  
gether.

Agent, Wm. Brown.

Paymaster, Amos Rugg.

Pay-day, same as Massachu-  
setts.

Figure 12 Left: 1851 Lowell Directory, p. 228.

Figure 13 Right: 1860 Lowell Directory, p. 37.

**MERRIMACK MANUFACTURING CO.**

NORTH END OF DUTTON STREET.

INCORPORATED, 1822.

---

**CAPITAL - - - \$2,500,000.**


---

B. F. CROWNINSHIELD, Treas., 5 Tremont St., Boston.

JOHN C. PALFREY, Agent.

BENJAMIN PATCH, Paymaster of Mills.

HENRY BURROWS, Supt. of Print Works.

J. B. F. SHEDD, Paymaster of Print Works.

---

Spindles . . . . .	88,960
Looms . . . . .	2,313
Females employed . . . . .	1,330
Males employed . . . . .	620
Yards made per week . . . . .	340,000
Cotton consumed per week, lbs. . . . .	70,000
Yards Dyed and Printed . . . . .	340,000
Kinds of Goods made . . . . .	Prints No. 30 to 37

---

Pay-day on the Saturday before the 16th of each month.

**This Corporation runs six Mills, besides the Print Works.**

Figure 14  
1866 Lowell Directory, p. 316.

MAP  
of a part  
of the Merrimack Yard.  
Lowell Mass.

1866.

Copy of a plan made from actual survey, by G. N. Stevens, 1866.

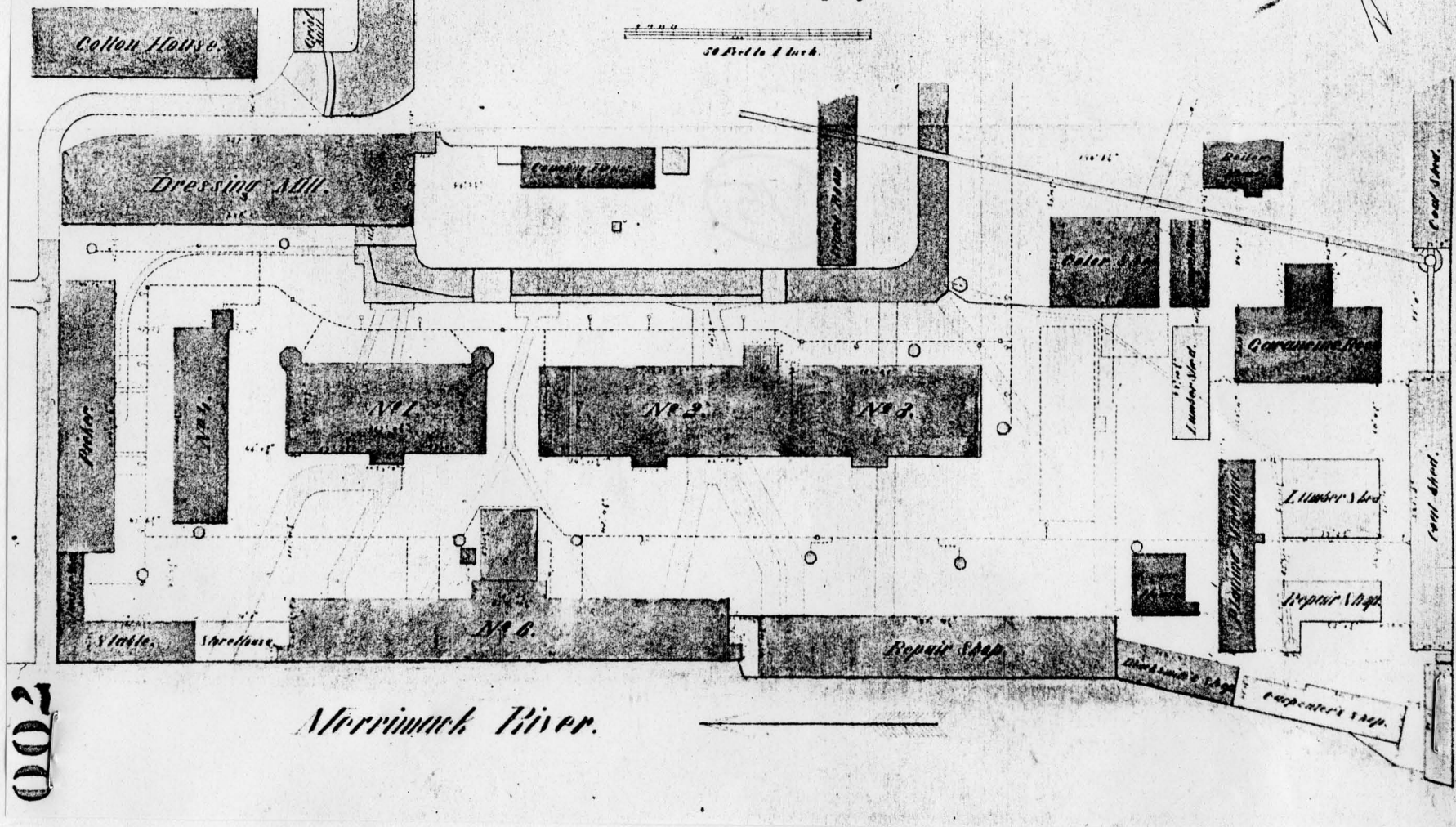


Figure 15

"Map of a part of the Merrimack Yard. Lowell Mass. 1866. Copy of a plan made from an actual survey by G. N. Stevens. 1866."

U. of Lowell Library, Special Collections, Locks and Canals photo.

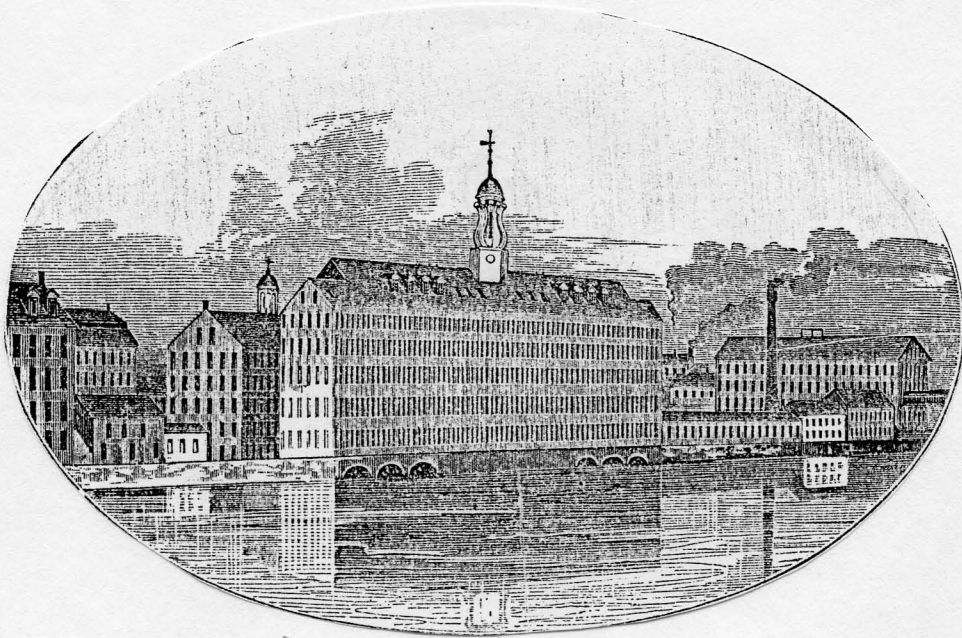


Figure 16  
View from the east of Merrimack Mill No. 6,  
built in 1846. Cowley, Illustrated History  
of Lowell, 1868, pp. 48, 49.



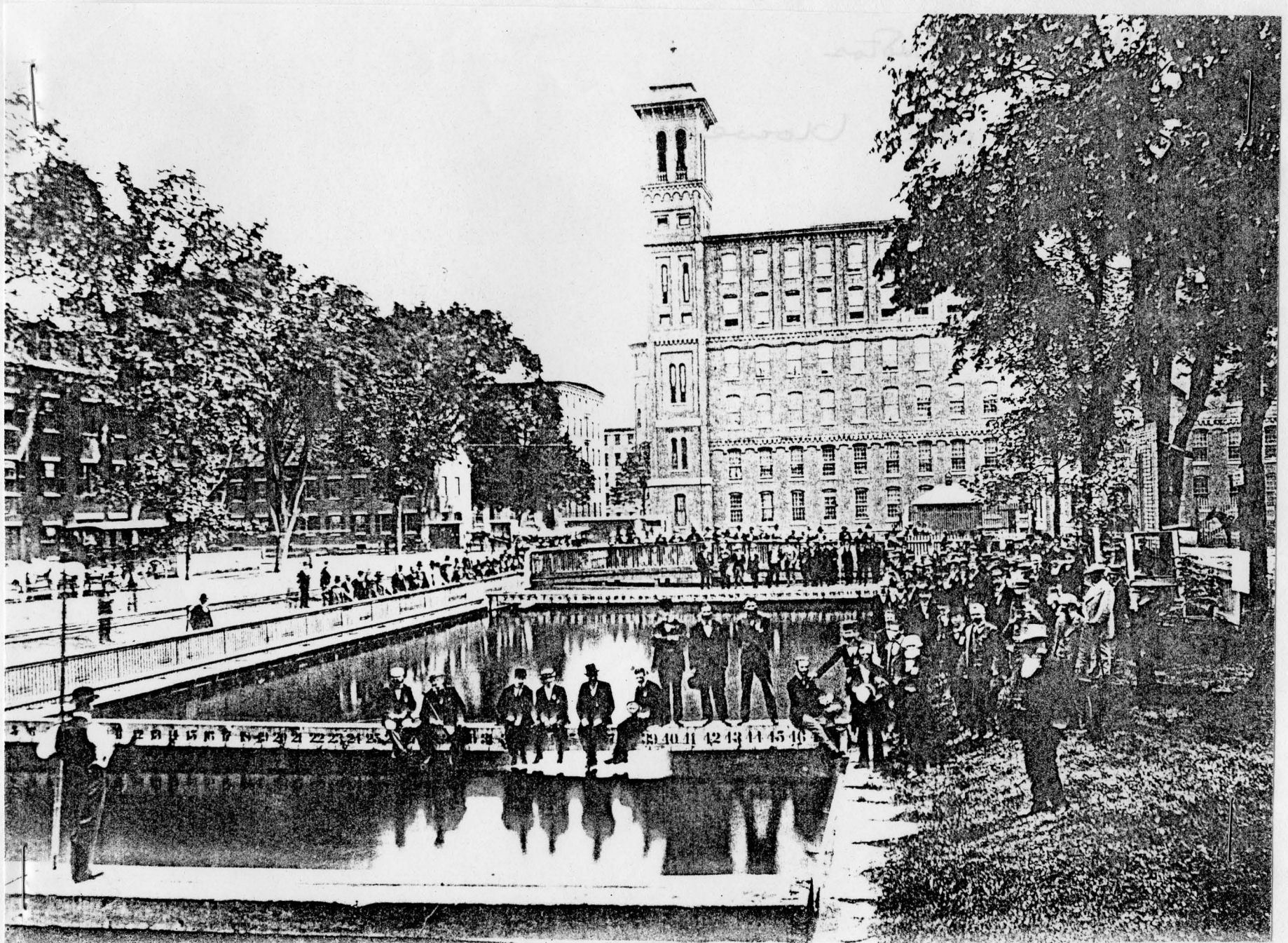


Figure 17  
No. 3 Mill of the Merrimack Mfg. Co., built 1863-1873. View from the south. U. of Lowell  
Library, Special Collections, Lowell Museum photo file.

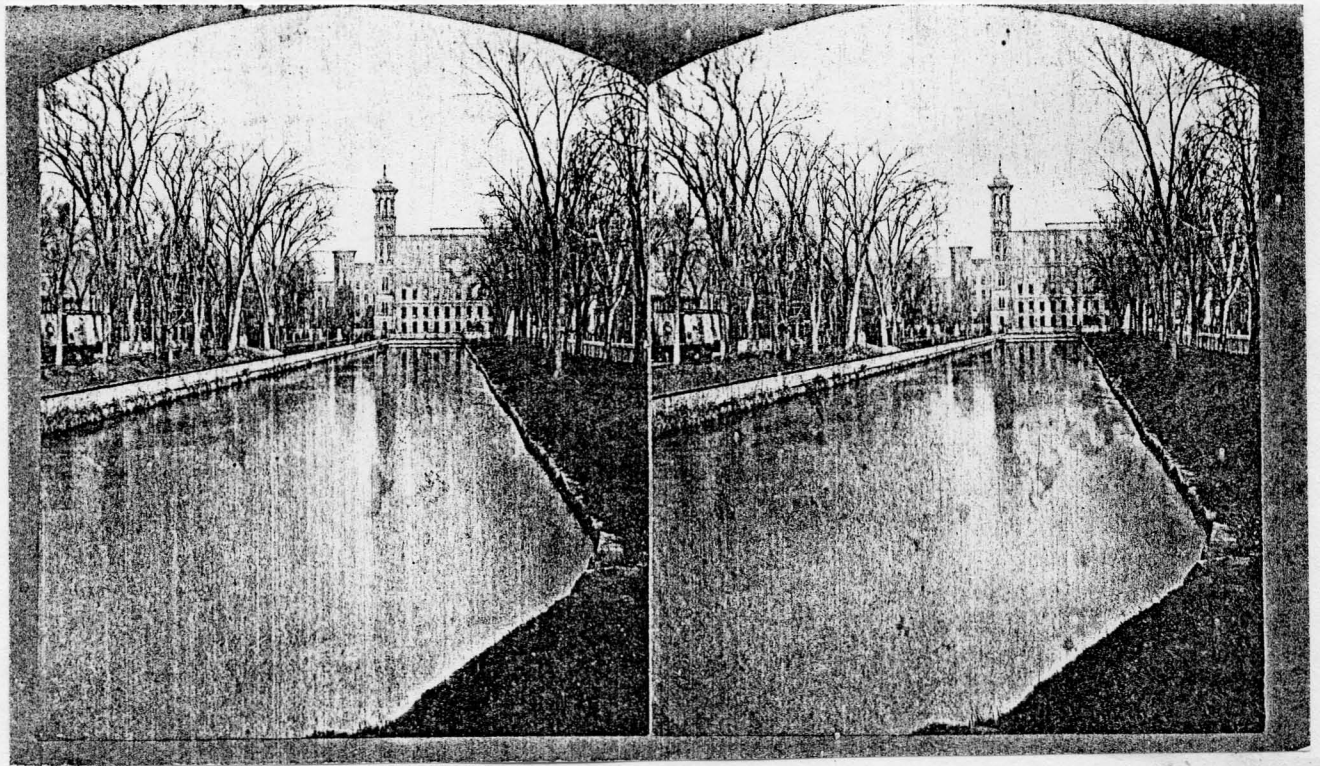
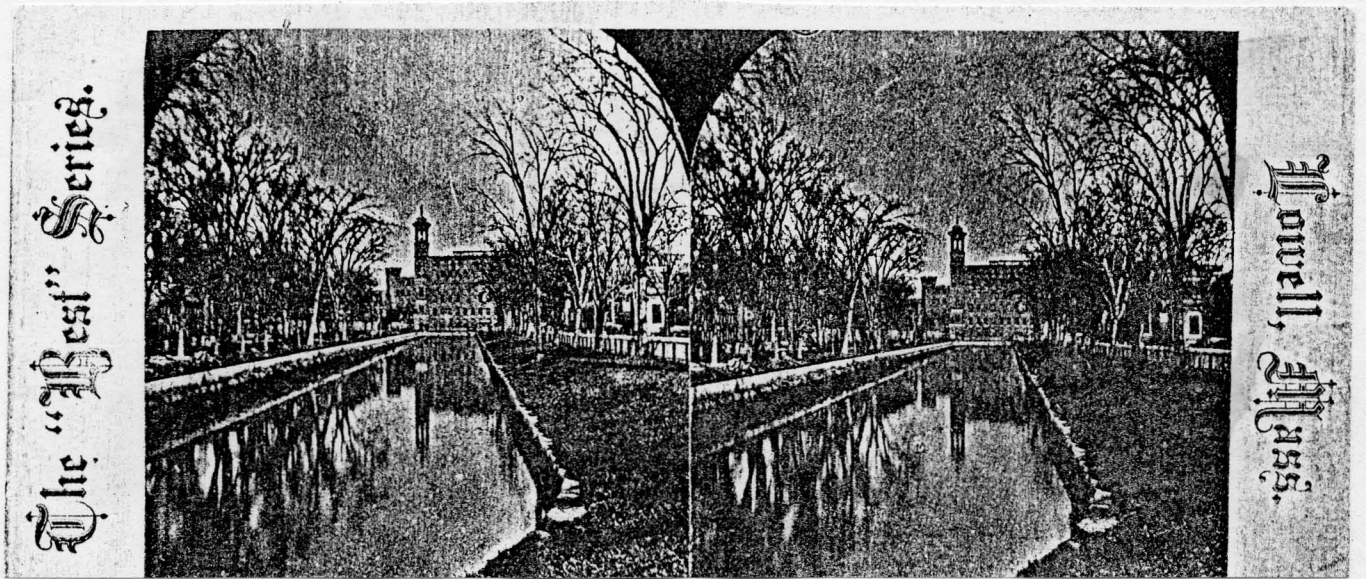
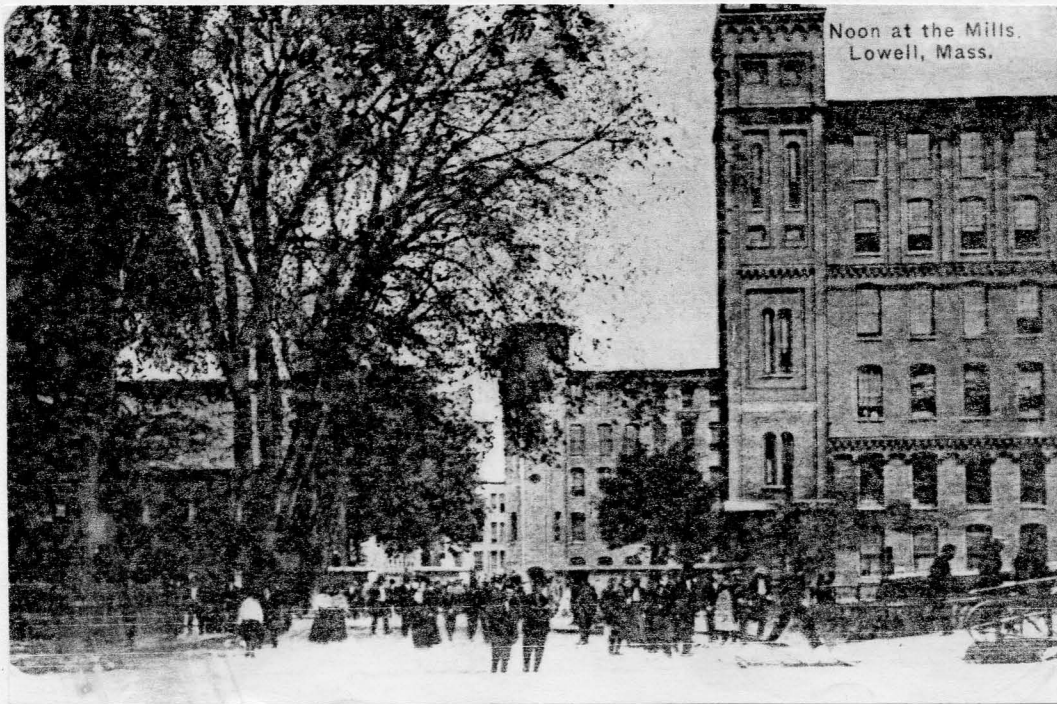
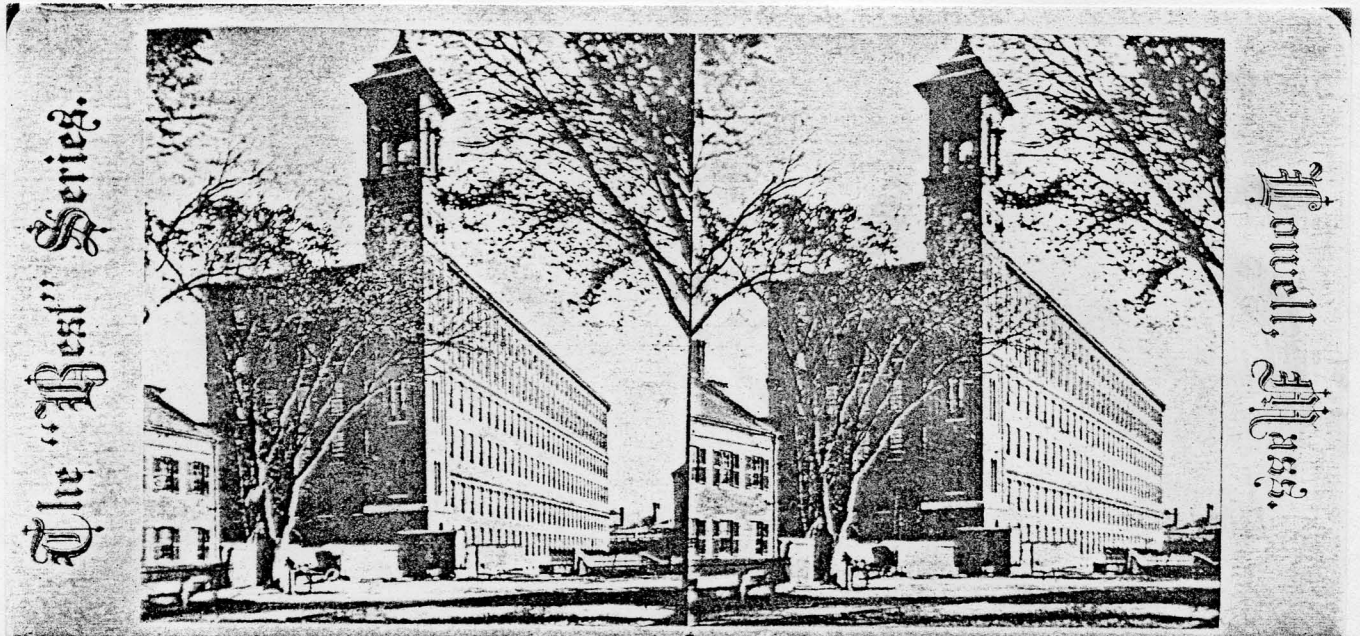


Figure 18  
• Two stereopticon views down the Merrimack Canal to Merrimack Mill No. 3. U. of Lowell Library, Special Collections, photo file.



Noon at the Mills.  
Lowell, Mass.



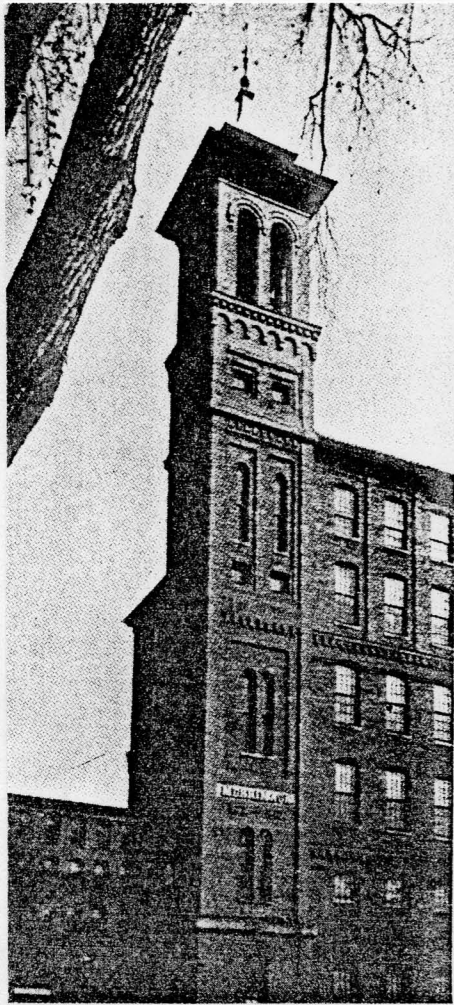
The "Best" Series.

Lowell, Mass.

Figure 19

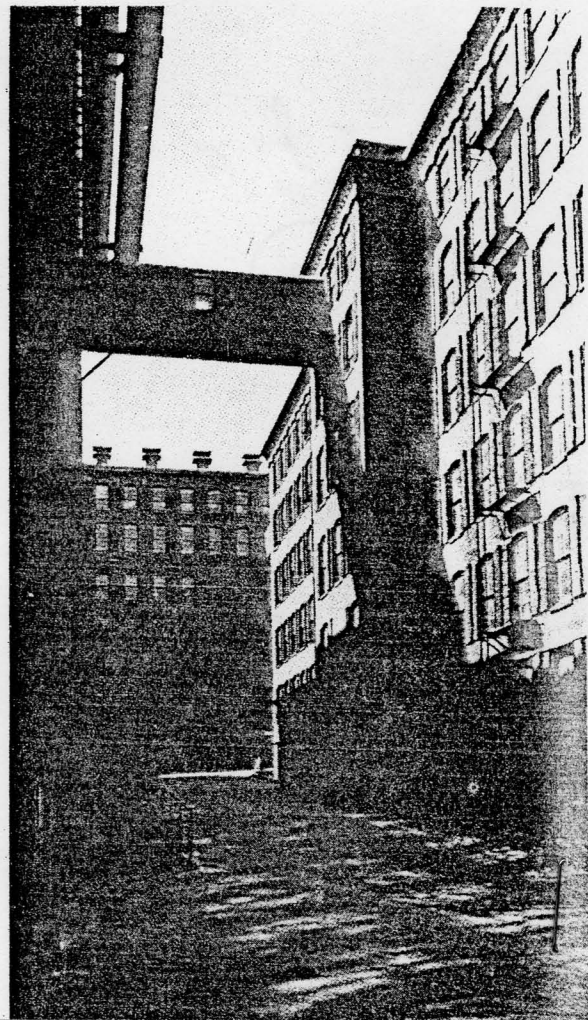
Top: "Noon at the Mills." Early twentieth century view from the south of the entrance to the Merrimack millyard. Note Mill No. 1 in the center and the Dressing Mill (No. 3 Mill) to the right.

Bottom: Stereoptican view of the Merrimack Mfg. Co.'s No. 3 Mill. U. of Lowell Library, Special Collections, photo file.



*Fig. 91.*

Tower of the Merrimack Manufacturing Company's Dressing Mill, Built in 1863



*Fig. 92.*

Rear View of the Merrimack Manufacturing Company's Dressing Mill

Figure 20

Two views of the No. 3 (Dressing) Mill. The building was razed ca. 1940. Coolidge, Mill and Mansion, 1942.

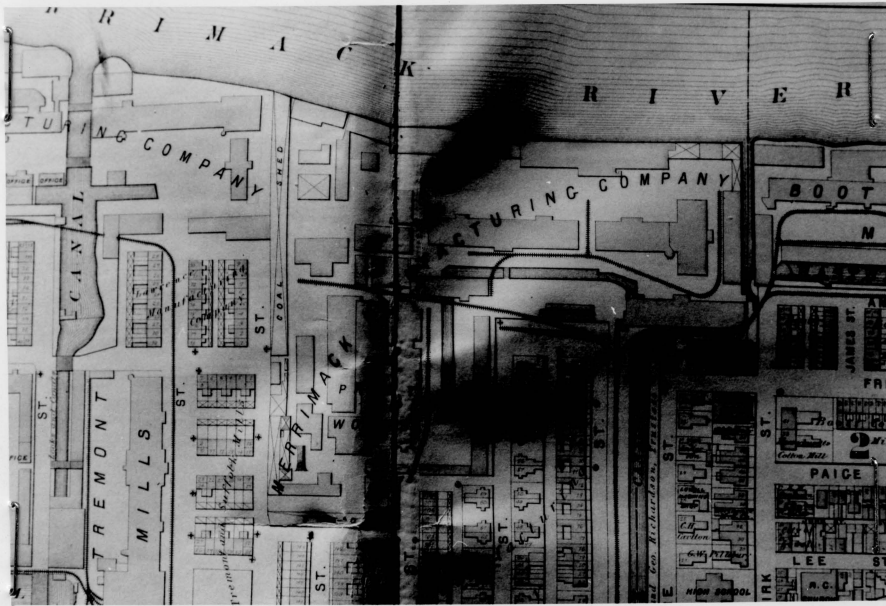


Figure 21  
 Detail of the 1879 atlas,  
 showing the property of  
 the Merrimack Mfg. Co.

MANUFACTURING COMPANIES.

521

# Merrimack Manufacturing Company,

NORTH END OF DUTTON STREET.

Incorporated 1822.

**Capital, - \$2,500,000.**

CHARLES H. DALTON, *Treas.*, 87 Milk St., Boston.

J. S. LUDLAM, *Agent.*

J. H. CAVERLY, *Paymaster of Mills.*

Spindles.....	158,464
Looms ...	3,950
Females employed.....	1,800
Males employed.....	900
Yards made per week.....	800,000
Cotton consumed per week, pounds.....	135,000
Yards Dyed and Printed.....	900,000
Kind of Goods made.....	Prints No. 30 to 37

*Pay-day on the Saturday before the 16th of each month.*

This Corporation runs five Mills, besides the Print Works.

Figure 22  
 1880 Lowell Directory, p. 521.

G4. Merrimack Mfg Co's "Jumbo"

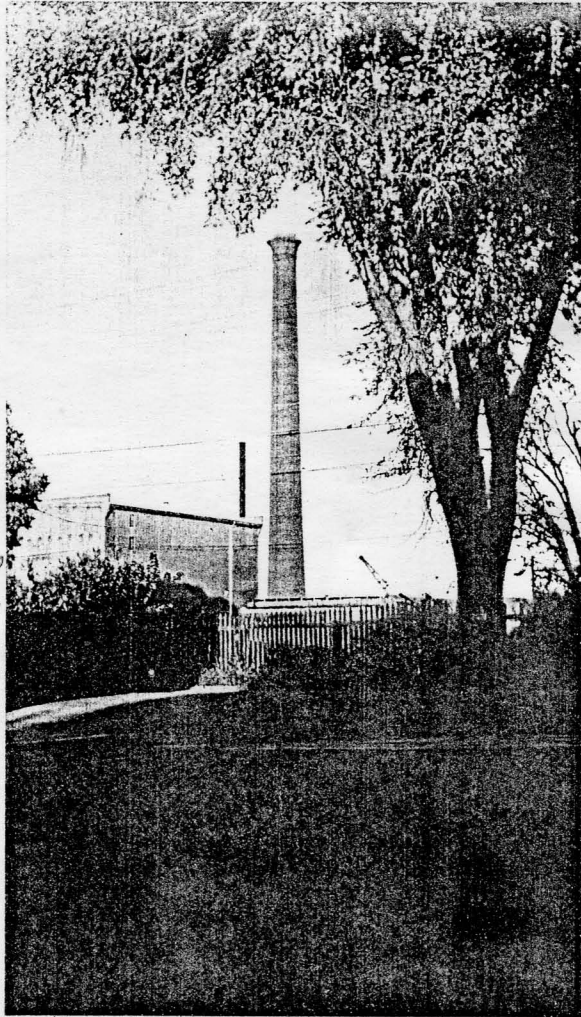


Figure 23

Merrimack Mfg. Co's "Jumbo." This chimney, built 1882-1883, was the tallest in the country at 283 feet high. Photographed in the late 1950s. U. of Lowell Library, Special Collections, "Christmas Card Box."

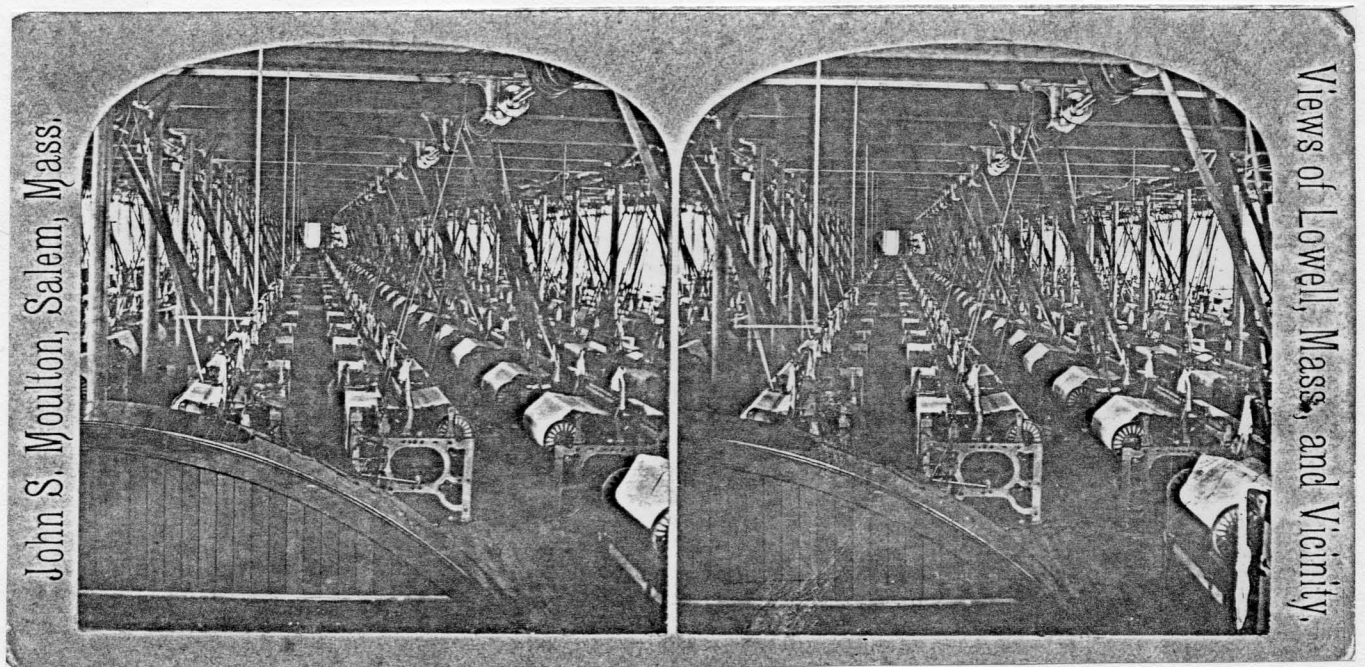
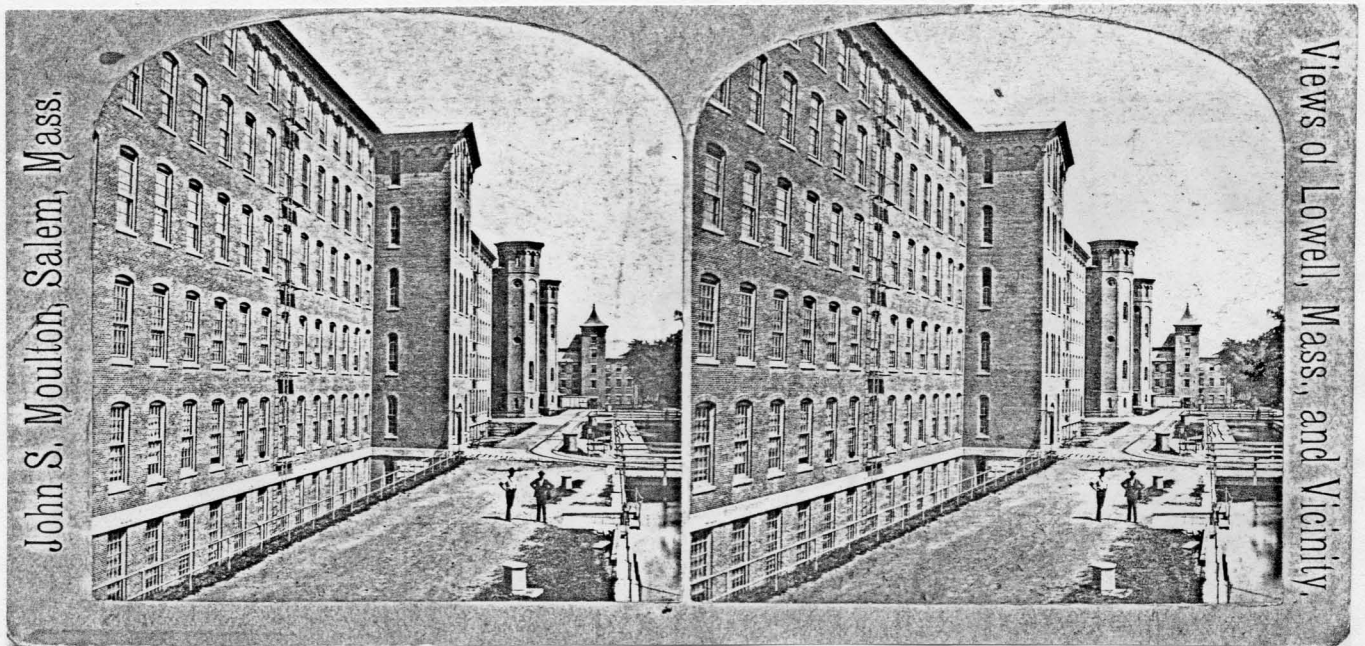


Figure 24

Two stereopticon views of the Merrimack Mills.

Top: Mills No. 2 and No. 1, from the west.

Bottom: Weaving room. Note the belt-driven looms.

U. of Lowell Library, Special Collections, photo file.

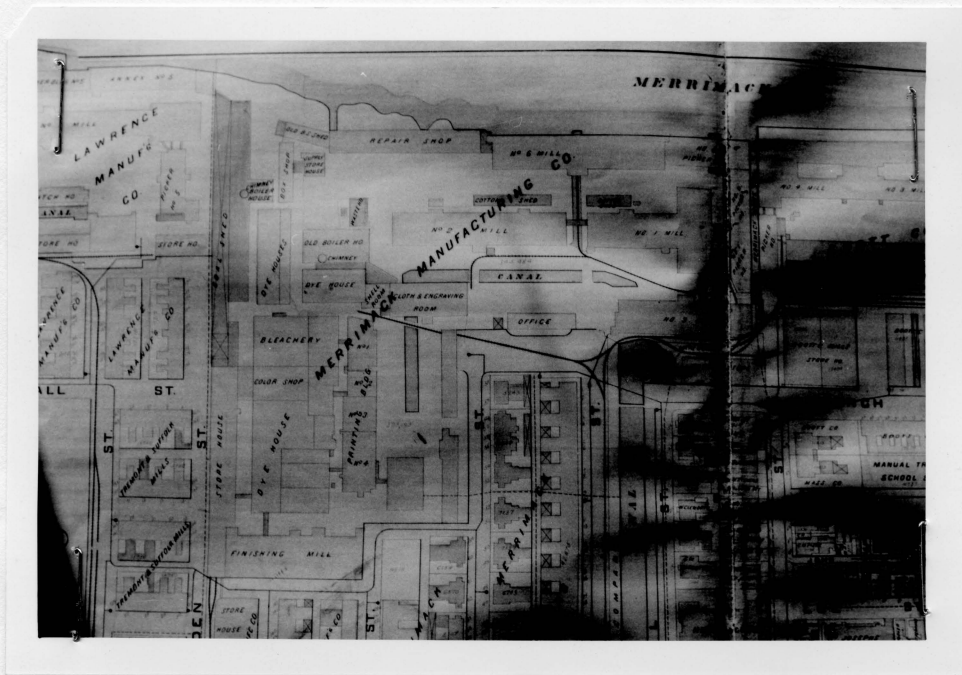


Figure 25  
 Detail of the 1896 Lowell atlas, showing the millyard  
 of the Merrimack Mfg. Co.

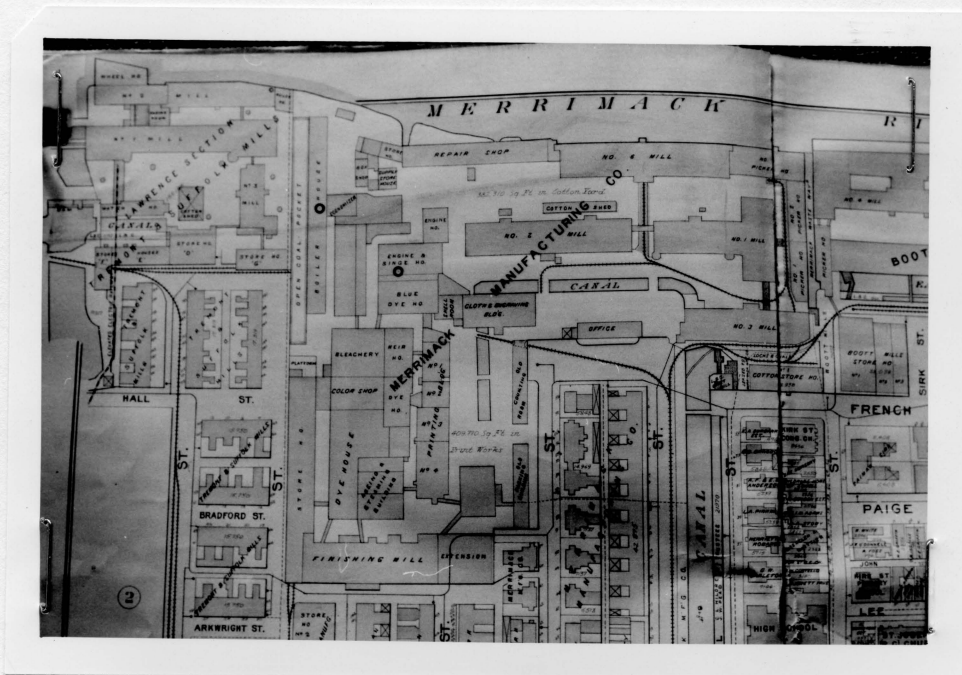
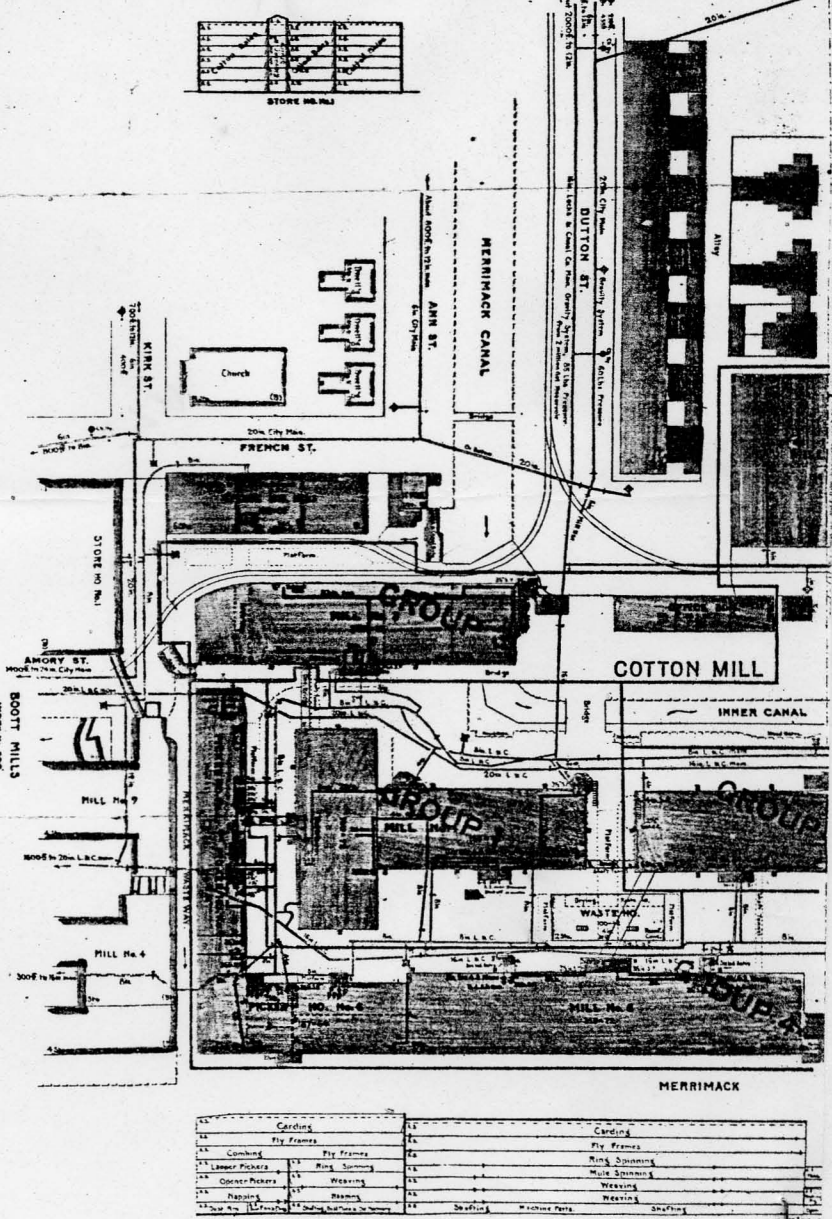


Figure 26  
 Detail of the 1906 Lowell atlas, showing the millyard  
 of the Merrimack Mfg. Co.



**CONSTRUCTION** - Rafts are mostly plank on timber.  
 Mill No. 3 and 4 are built under construction in Reparatur Shop, Repair Shop, East side of Mill No. 1, Store No. and  
 Shop, Repair Shop, No. 1, 2, 4 & 4 (See also No. 1, 2, 3, 4, 5, 6, 7, 8, 9, 10, 11, 12, 13, 14, 15, 16, 17, 18, 19, 20, 21, 22, 23, 24, 25, 26, 27, 28, 29, 30, 31, 32, 33, 34, 35, 36, 37, 38, 39, 40, 41, 42, 43, 44, 45, 46, 47, 48, 49, 50, 51, 52, 53, 54, 55, 56, 57, 58, 59, 60, 61, 62, 63, 64, 65, 66, 67, 68, 69, 70, 71, 72, 73, 74, 75, 76, 77, 78, 79, 80, 81, 82, 83, 84, 85, 86, 87, 88, 89, 90, 91, 92, 93, 94, 95, 96, 97, 98, 99, 100, 101, 102, 103, 104, 105, 106, 107, 108, 109, 110, 111, 112, 113, 114, 115, 116, 117, 118, 119, 120, 121, 122, 123, 124, 125, 126, 127, 128, 129, 130, 131, 132, 133, 134, 135, 136, 137, 138, 139, 140, 141, 142, 143, 144, 145, 146, 147, 148, 149, 150, 151, 152, 153, 154, 155, 156, 157, 158, 159, 160, 161, 162, 163, 164, 165, 166, 167, 168, 169, 170, 171, 172, 173, 174, 175, 176, 177, 178, 179, 180, 181, 182, 183, 184, 185, 186, 187, 188, 189, 190, 191, 192, 193, 194, 195, 196, 197, 198, 199, 200, 201, 202, 203, 204, 205, 206, 207, 208, 209, 210, 211, 212, 213, 214, 215, 216, 217, 218, 219, 220, 221, 222, 223, 224, 225, 226, 227, 228, 229, 230, 231, 232, 233, 234, 235, 236, 237, 238, 239, 240, 241, 242, 243, 244, 245, 246, 247, 248, 249, 250, 251, 252, 253, 254, 255, 256, 257, 258, 259, 260, 261, 262, 263, 264, 265, 266, 267, 268, 269, 270, 271, 272, 273, 274, 275, 276, 277, 278, 279, 280, 281, 282, 283, 284, 285, 286, 287, 288, 289, 290, 291, 292, 293, 294, 295, 296, 297, 298, 299, 300, 301, 302, 303, 304, 305, 306, 307, 308, 309, 310, 311, 312, 313, 314, 315, 316, 317, 318, 319, 320, 321, 322, 323, 324, 325, 326, 327, 328, 329, 330, 331, 332, 333, 334, 335, 336, 337, 338, 339, 340, 341, 342, 343, 344, 345, 346, 347, 348, 349, 350, 351, 352, 353, 354, 355, 356, 357, 358, 359, 360, 361, 362, 363, 364, 365, 366, 367, 368, 369, 370, 371, 372, 373, 374, 375, 376, 377, 378, 379, 380, 381, 382, 383, 384, 385, 386, 387, 388, 389, 390, 391, 392, 393, 394, 395, 396, 397, 398, 399, 400, 401, 402, 403, 404, 405, 406, 407, 408, 409, 410, 411, 412, 413, 414, 415, 416, 417, 418, 419, 420, 421, 422, 423, 424, 425, 426, 427, 428, 429, 430, 431, 432, 433, 434, 435, 436, 437, 438, 439, 440, 441, 442, 443, 444, 445, 446, 447, 448, 449, 450, 451, 452, 453, 454, 455, 456, 457, 458, 459, 460, 461, 462, 463, 464, 465, 466, 467, 468, 469, 470, 471, 472, 473, 474, 475, 476, 477, 478, 479, 480, 481, 482, 483, 484, 485, 486, 487, 488, 489, 490, 491, 492, 493, 494, 495, 496, 497, 498, 499, 500, 501, 502, 503, 504, 505, 506, 507, 508, 509, 510, 511, 512, 513, 514, 515, 516, 517, 518, 519, 520, 521, 522, 523, 524, 525, 526, 527, 528, 529, 530, 531, 532, 533, 534, 535, 536, 537, 538, 539, 540, 541, 542, 543, 544, 545, 546, 547, 548, 549, 550, 551, 552, 553, 554, 555, 556, 557, 558, 559, 560, 561, 562, 563, 564, 565, 566, 567, 568, 569, 570, 571, 572, 573, 574, 575, 576, 577, 578, 579, 580, 581, 582, 583, 584, 585, 586, 587, 588, 589, 590, 591, 592, 593, 594, 595, 596, 597, 598, 599, 600, 601, 602, 603, 604, 605, 606, 607, 608, 609, 610, 611, 612, 613, 614, 615, 616, 617, 618, 619, 620, 621, 622, 623, 624, 625, 626, 627, 628, 629, 630, 631, 632, 633, 634, 635, 636, 637, 638, 639, 640, 641, 642, 643, 644, 645, 646, 647, 648, 649, 650, 651, 652, 653, 654, 655, 656, 657, 658, 659, 660, 661, 662, 663, 664, 665, 666, 667, 668, 669, 670, 671, 672, 673, 674, 675, 676, 677, 678, 679, 680, 681, 682, 683, 684, 685, 686, 687, 688, 689, 690, 691, 692, 693, 694, 695, 696, 697, 698, 699, 700, 701, 702, 703, 704, 705, 706, 707, 708, 709, 710, 711, 712, 713, 714, 715, 716, 717, 718, 719, 720, 721, 722, 723, 724, 725, 726, 727, 728, 729, 730, 731, 732, 733, 734, 735, 736, 737, 738, 739, 740, 741, 742, 743, 744, 745, 746, 747, 748, 749, 750, 751, 752, 753, 754, 755, 756, 757, 758, 759, 760, 761, 762, 763, 764, 765, 766, 767, 768, 769, 770, 771, 772, 773, 774, 775, 776, 777, 778, 779, 780, 781, 782, 783, 784, 785, 786, 787, 788, 789, 790, 791, 792, 793, 794, 795, 796, 797, 798, 799, 800, 801, 802, 803, 804, 805, 806, 807, 808, 809, 810, 811, 812, 813, 814, 815, 816, 817, 818, 819, 820, 821, 822, 823, 824, 825, 826, 827, 828, 829, 830, 831, 832, 833, 834, 835, 836, 837, 838, 839, 840, 841, 842, 843, 844, 845, 846, 847, 848, 849, 850, 851, 852, 853, 854, 855, 856, 857, 858, 859, 860, 861, 862, 863, 864, 865, 866, 867, 868, 869, 870, 871, 872, 873, 874, 875, 876, 877, 878, 879, 880, 881, 882, 883, 884, 885, 886, 887, 888, 889, 890, 891, 892, 893, 894, 895, 896, 897, 898, 899, 900, 901, 902, 903, 904, 905, 906, 907, 908, 909, 910, 911, 912, 913, 914, 915, 916, 917, 918, 919, 920, 921, 922, 923, 924, 925, 926, 927, 928, 929, 930, 931, 932, 933, 934, 935, 936, 937, 938, 939, 940, 941, 942, 943, 944, 945, 946, 947, 948, 949, 950, 951, 952, 953, 954, 955, 956, 957, 958, 959, 960, 961, 962, 963, 964, 965, 966, 967, 968, 969, 970, 971, 972, 973, 974, 975, 976, 977, 978, 979, 980, 981, 982, 983, 984, 985, 986, 987, 988, 989, 990, 991, 992, 993, 994, 995, 996, 997, 998, 999, 1000.

Process	Frame	Spinning	Ring	Spinning	Spinning	Spinning	Spinning	Spinning	Spinning	Spinning	Spinning
Carding	Ring Spinning	Ring Spinning	Ring Spinning	Ring Spinning	Ring Spinning	Ring Spinning	Ring Spinning	Ring Spinning	Ring Spinning	Ring Spinning	Ring Spinning
Combing	Ring Spinning	Ring Spinning	Ring Spinning	Ring Spinning	Ring Spinning	Ring Spinning	Ring Spinning	Ring Spinning	Ring Spinning	Ring Spinning	Ring Spinning
Lower Pickers	Ring Spinning	Ring Spinning	Ring Spinning	Ring Spinning	Ring Spinning	Ring Spinning	Ring Spinning	Ring Spinning	Ring Spinning	Ring Spinning	Ring Spinning
Upper Pickers	Ring Spinning	Ring Spinning	Ring Spinning	Ring Spinning	Ring Spinning	Ring Spinning	Ring Spinning	Ring Spinning	Ring Spinning	Ring Spinning	Ring Spinning
Packing	Ring Spinning	Ring Spinning	Ring Spinning	Ring Spinning	Ring Spinning	Ring Spinning	Ring Spinning	Ring Spinning	Ring Spinning	Ring Spinning	Ring Spinning
Packing	Ring Spinning	Ring Spinning	Ring Spinning	Ring Spinning	Ring Spinning	Ring Spinning	Ring Spinning	Ring Spinning	Ring Spinning	Ring Spinning	Ring Spinning



**MERRIMACK MFG. CO.**  
 Lowell, Mass.  
 Surveyed Oct. 26, 1910  
 Scale 1 in = 60 ft

FOR REMAINDER OF PLAN SEE SHEET SER. No. 9306  
 FOR VIEW SEE SHEET SER. No. 5727.

INDEX NUMBER  
**316**  
 MASS.

**Figure 27A**  
 "Merrimack Mfg. Co. (Cotton Mill and Print Works) Lowell, Mass. Surveyed Oct. 26, 1910." Associated Mutual Insurance Companies: plan and sections --serial #9305, index #316. U. of Lowell Library, Special Collections, Locks and Canals photo file. (See Figure 27B).

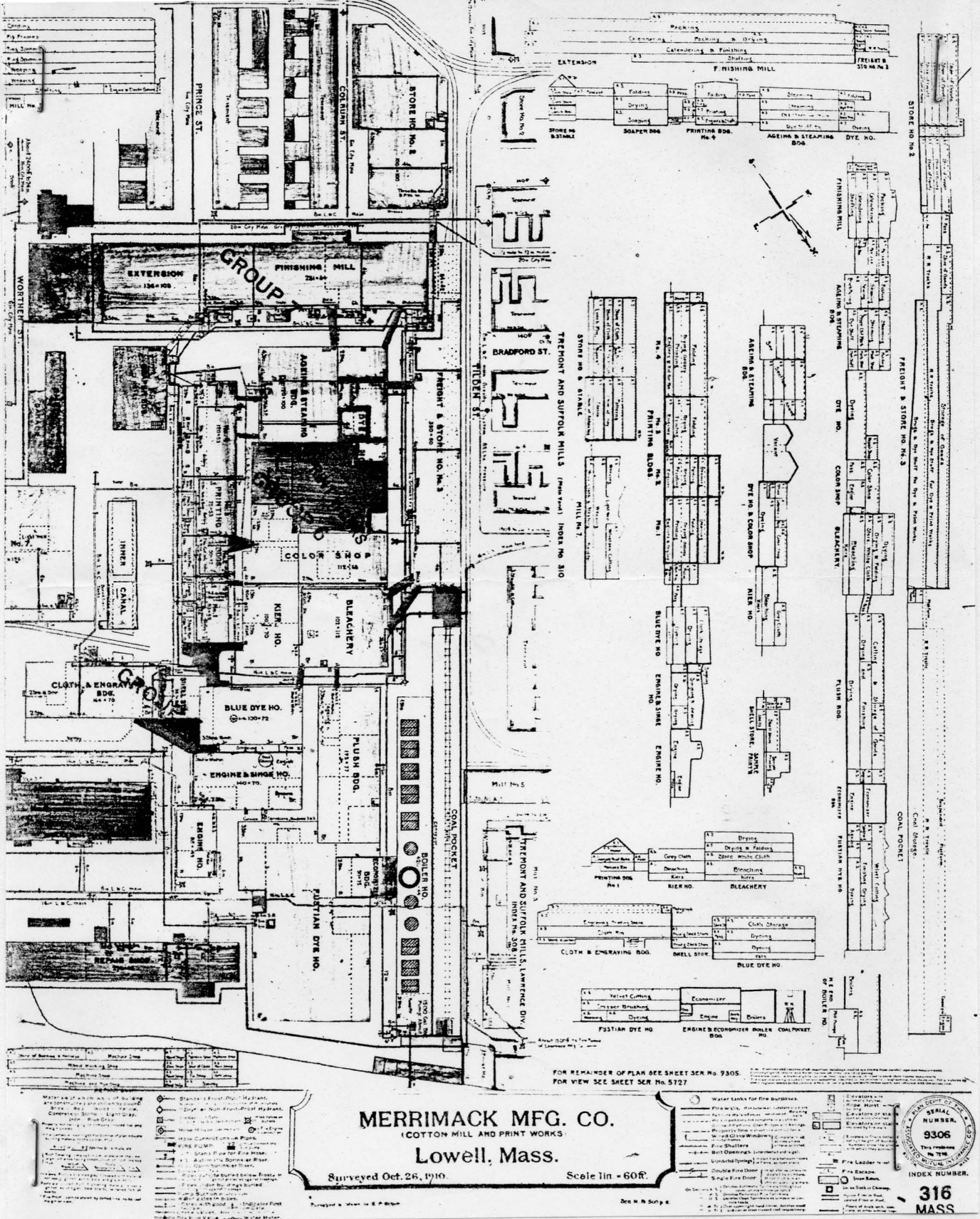


Figure 27B  
 "Merrimack Mfg. Co. (Cotton Mill and Print Works) Lowell, Mass. Surveyed Oct. 26, 1910." Associated Mutual Insurance Companies: plan and sections --serial #9306, index #316. U. of Lowell Library, Special Collections, Locks and Canals photo file.

INCORPORATED 1822

# Merrimack Manufacturing Co.

FOOT OF DUTTON STREET  
LOWELL

**CAPITAL :: \$4,400,000**

HERBERT LYMAN, Treasurer  
53 STATE ST., BOSTON, MASS.

---

SELLING AGENTS

LAWRENCE & COMPANY, BOSTON AND NEW YORK  
JUDE C. WADLEIGH, Agent

---

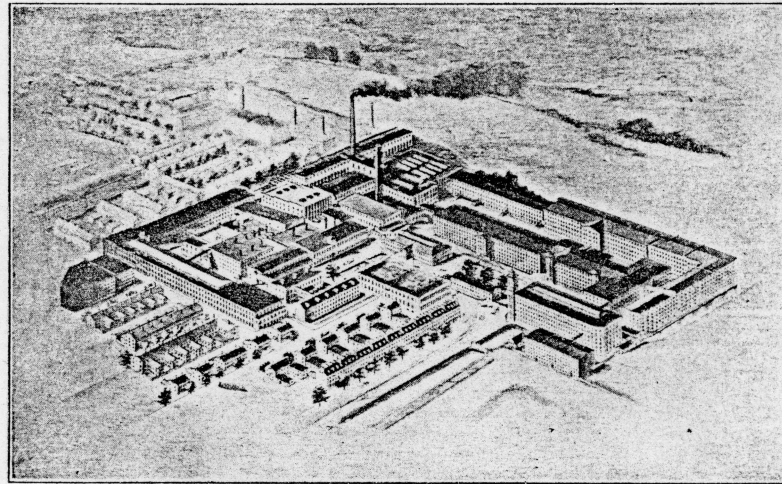
GOODS MADE

**Corduroys, Velveteens, Khakies,  
Miscellaneous Converting  
Goods, Etc.**

**MERRIMACK MFG. CO. :: HUNTSVILLE, ALABAMA**

*Mills Owned and Operated by this Company*

Figure 29  
1920 Lowell Directory, p. 992. Note the company's listing  
of Huntsville, Alabama as its location.



86—PHOTOGRAPH 41. MERRIMACK MANUFACTURING COMPANY

Figure 28

Bird's-eye view of the Merrimack Mfg. Co. millyard.  
 Kenncott, Record of a City, 1912, p. 154.

[See following page for Figure 29.]

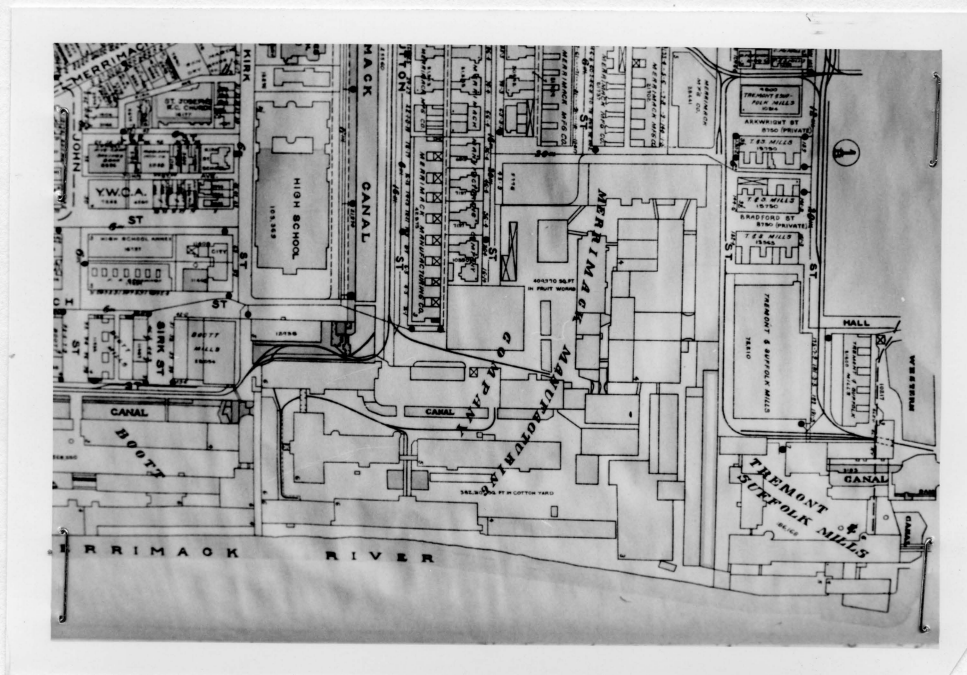


Figure 30

Detail of the 1924 atlas of Lowell, showing the millyard of the Merrimack  
 Mfg. Co.

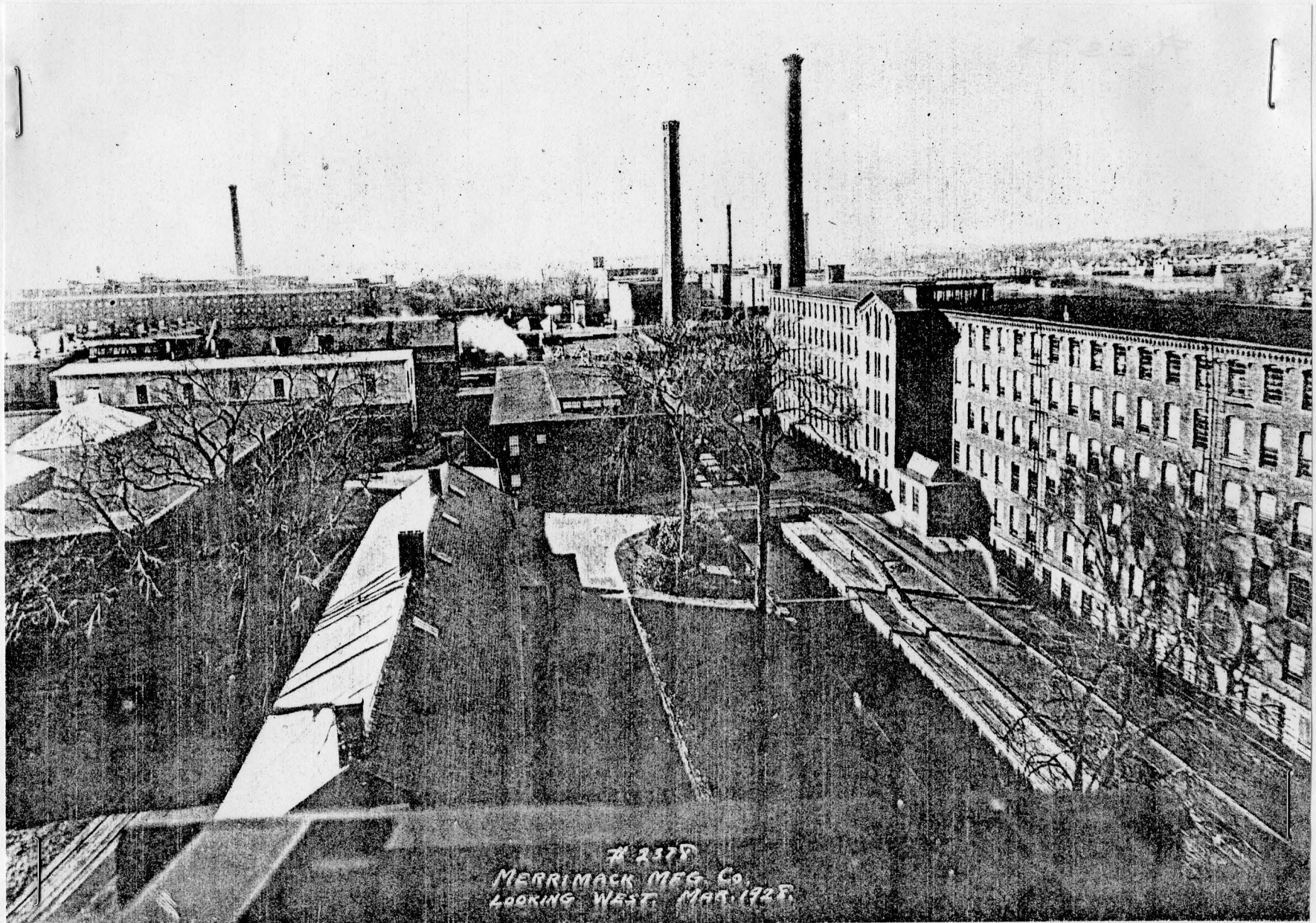


Figure 31  
"Merrimack Mfg. Co. Looking West. Mar. 1928." Note the roof of the Counting House in the left foreground, Mill No. 2 to the right, and the trees and shrubs within the millyard. U. of Lowell Library, Special Collections, Locks and Canals photo #2378.

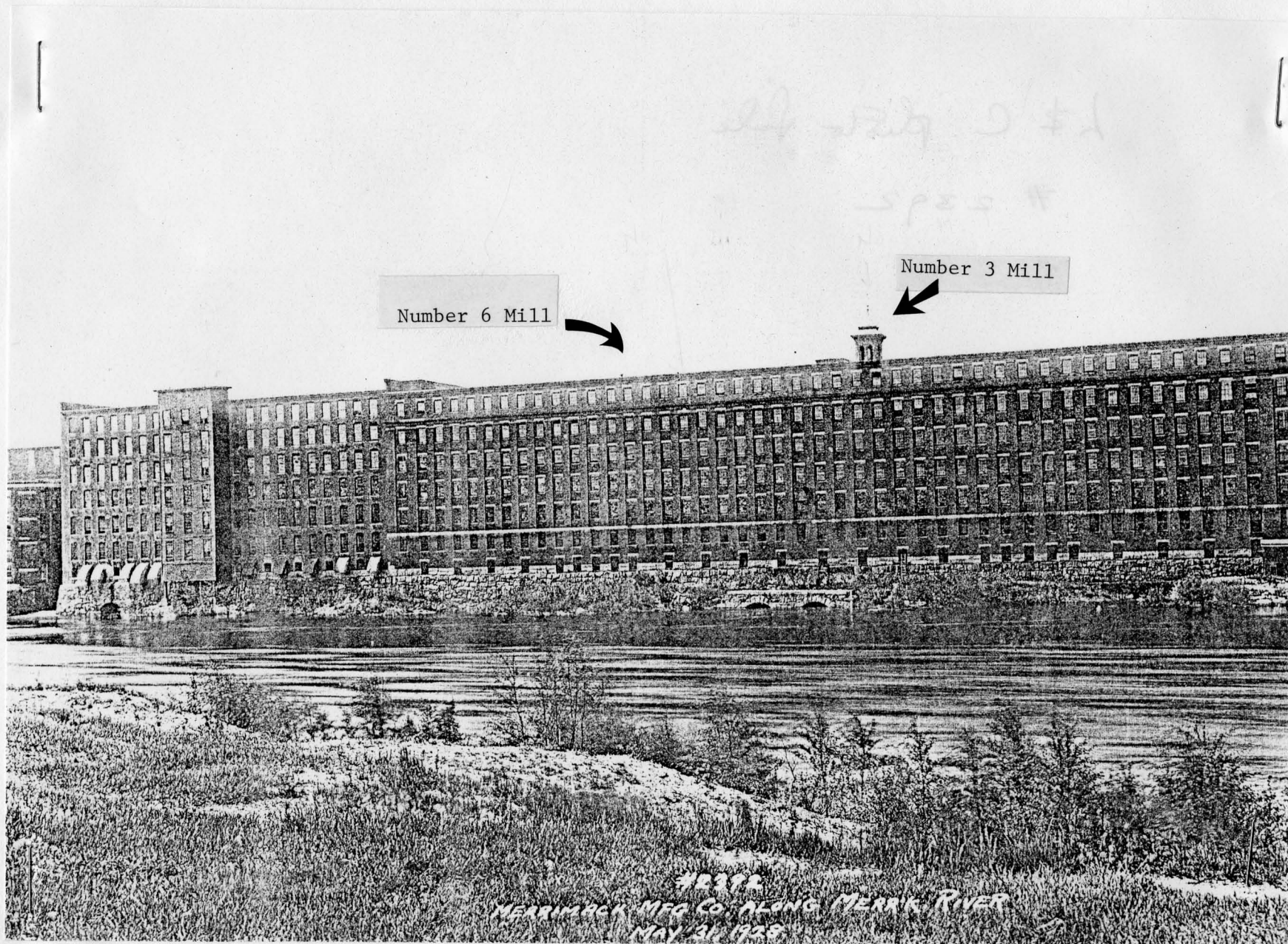


Figure 32A

"Merrimack Mfg. Co. Along Merr'k / River May 31, 1928." No. 6 Mill dominates this view, though the top of the Dressing Mill tower appears left of center. U. of Lowell Library, Special Collections, Locks and Canals photo #2392.

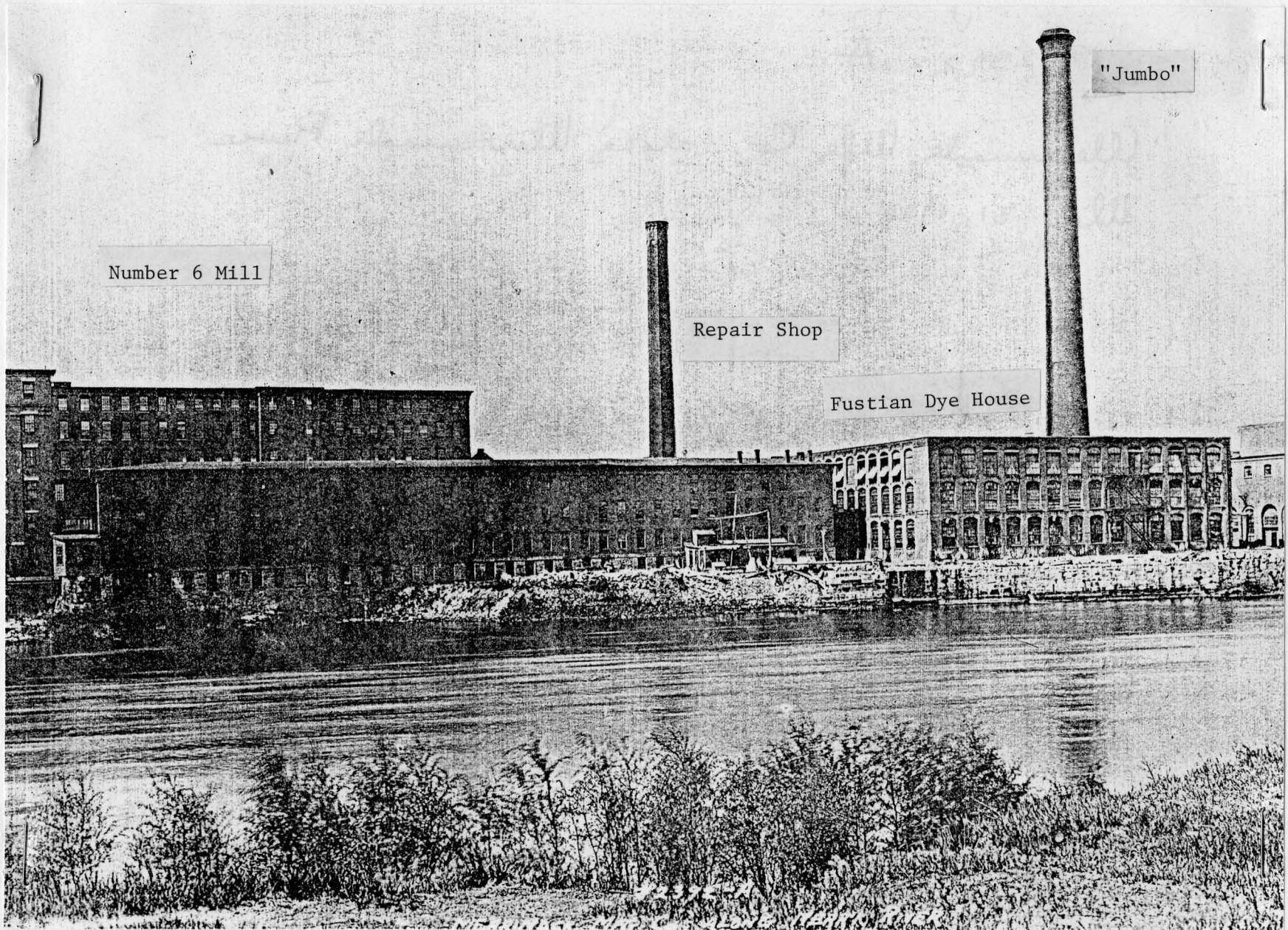


Figure 32B

"Merrimack Mfg. Co. along Merr'k River-May 31, 1928." U. of Lowell Library, Special Collections, Locks and Canals photo #2392-A.

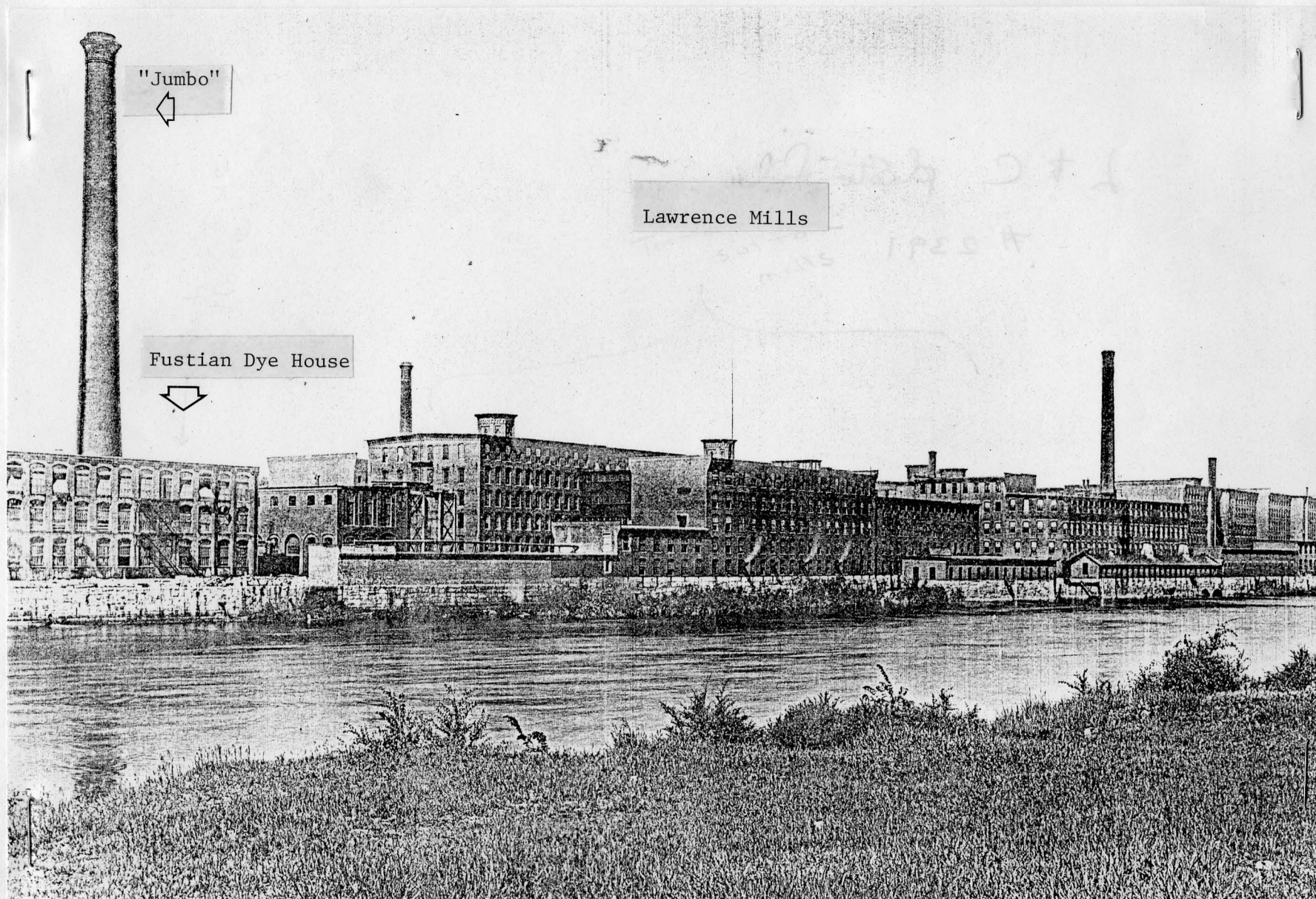


Figure 32C

View from the north bank of the Merrimack River, looking west. Merrimack Mfg. Co.'s "Jumbo" smokestack and Fustian Dye House are at left, and the mills of the Lawrence Mfg. Co. fill the rest of the scene. U. of Lowell Library, Special Collections, Locks and Canals, photo #2391.



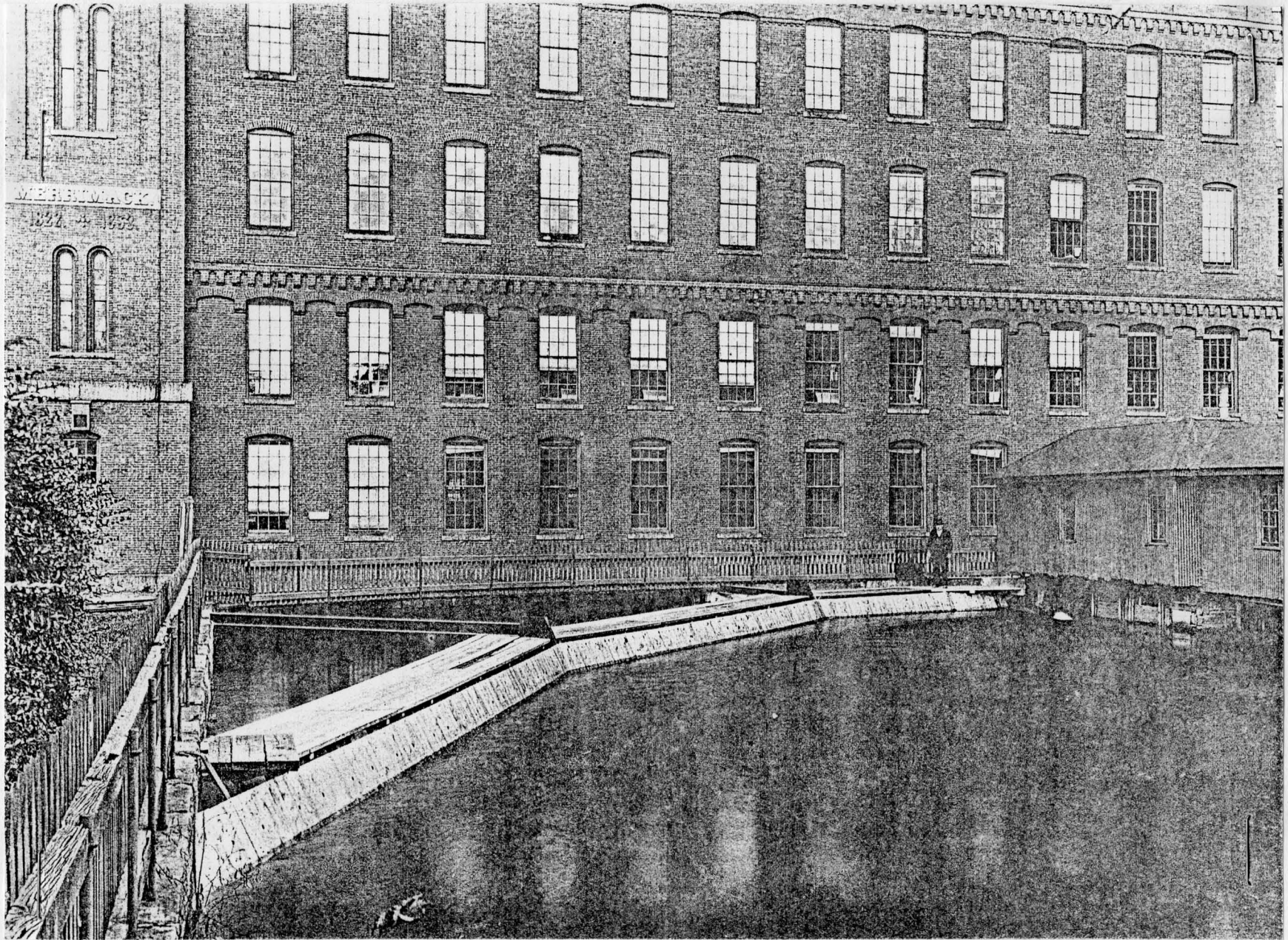


Figure 33  
"Merrimack Boom." Mill No. 3 fills the view. Note Merrimack Dam at right. Photo taken Oct. 25, 1928. U. of Lowell Library, Special Collections, Locks and Canals photo #2422.



Figure 34  
"Merrimack Store House #4 Being Torn Down.  
Collections, Locks and Canals photo #2721.

March 29, 1933." U. of Lowell Library, Special



Figure 35  
"View from the southwest of Merrimack Mfg. Co., taken in 1958. Note No. 2 Mill is at left, No. 1 Mill at center. U. of Lowell Library, Special Collections, Lowell Historical Society picture file."



Figure 36

View of the Merrimack Mfg. Co. from the southeast. "Taken 1958 when liquidating from Bertrand A. McKittrick." Note the Counting House at the far left, and the parking lot in the foreground where No. 3 Mill had stood. U. of Lowell Library, Special Collections, Lowell Historical Society picture file.

FOOTNOTES

1. Acts of Incorporation and By-laws of the Merrimack Mfg. Co., pg. 3.
2. Eno, Cotton Working, p. 73.
3. Ibid., p. 73.
4. Ibid., p. 73.
5. Ibid., p. 73.
6. Hill, Eowell Illustrated, 1884, n. p.
7. Ibid.
8. Ibid.
9. Eno, op. cit.
10. Ibid., p. 91.
11. Coburn, History of Lowell, 1920, p. 162.
12. Hill, op. cit.
13. Ibid.
14. Ibid.
15. Lowell Sun, July 20, 1903, p. 1, c. 2.
16. Eno, op. cit., p. 155.

BIBLIOGRAPHY

- Coburn, Frederick William  
1920 History of Lowell and Its People.  
Lewis Historical Publishing Company, New York.
- Coolidge, John Phillips  
1942 Mill and Mansion: A Study of Architecture and Society in Lowell, Massachusetts, 1820-1865.  
Columbia University Press, New York, 1942.  
Reissued: Russell and Russell, New York, 1967.
- Courier-Citizen Company,  
Illustrated History of Lowell, Massachusetts and Vicinity, done by divers hands. Courier-Citizen Company, Lowell, 1897.
- Cowley, Charles  
A History of Lowell. Second revised edition.  
Lee and Shephard, Boston; B. C. Sargent and J. Merrill and Son, Lowell, 1868.
- Eno, Arthur L., Jr. (editor)  
Cotton Was King. A History of Lowell, Massachusetts. New Hampshire Publishing Company, Manchester, New Hampshire, 1976.
- Gibb, George Sweet  
The Saco-Lowell Shops, 1813-1949. Harvard University Press, Cambridge, 1950.
- Hill, Frank P.  
Lowell Illustrated; A Chronological Record of Events and Historical Sketches of the Large Manufacturing Corporations. Huse, Goodwin and Company, Lowell, 1884.
- Lowell Sun, July 20, 1903.